

HP Systinet Workbench

Software Version: 4.10

Taxonomy Editor User Guide

Document Release Date: April 2013

Software Release Date: April 2013



Legal Notices

Warranty

The only warranties for HP products and services are set forth in the express warranty statements accompanying such products and services. Nothing herein should be construed as constituting an additional warranty. HP shall not be liable for technical or editorial errors or omissions contained herein.

The information contained herein is subject to change without notice.

Restricted Rights Legend

Confidential computer software. Valid license from HP required for possession, use or copying. Consistent with FAR 12.211 and 12.212, Commercial Computer Software, Computer Software Documentation, and Technical Data for Commercial Items are licensed to the U.S. Government under vendor's standard commercial license.

Copyright Notice

© Copyright 2003 - 2013 Hewlett-Packard Development Company, L.P.

Trademark Notices

Adobe™ is a trademark of Adobe Systems Incorporated.

Microsoft® and Windows® are U.S. registered trademarks of Microsoft Corporation.

UNIX® is a registered trademark of The Open Group.

Documentation Updates

The title page of this document contains the following identifying information:

- Software Version number, which indicates the software version.
- Document Release Date, which changes each time the document is updated.
- Software Release Date, which indicates the release date of this version of the software.

To check for recent updates or to verify that you are using the most recent edition of a document, go to:

<http://h20230.www2.hp.com/selfsolve/manuals>

This site requires that you register for an HP Passport and log on. To register for an HP Passport ID, go to:

<http://h20229.www2.hp.com/passport-registration.html>

Or click the **New users - please register** link on the HP Passport log on page.

You will also receive updated or new editions if you subscribe to the appropriate product support service. Contact your HP sales representative for details.

Support

Visit the HP Software Support Online web site at:

<http://www.hp.com/go/hpsoftwaresupport>

This web site provides contact information and details about the products, services, and support that HP Software offers.

HP Software online support provides customer self-solve capabilities. It provides a fast and efficient way to access interactive technical support tools needed to manage your business. As a valued support customer, you can benefit by using the support web site to:

- Search for knowledge documents of interest
- Submit and track support cases and enhancement requests
- Download software patches
- Manage support contracts
- Look up HP support contacts
- Review information about available services
- Enter into discussions with other software customers
- Research and register for software training

Most of the support areas require that you register as an HP Passport user and sign in. Many also require a support contract. To register for an HP Passport ID, go to:

<http://h20229.www2.hp.com/passport-registration.html>

To find more information about access levels, go to:

http://h20230.www2.hp.com/new_access_levels.jsp

Disclaimer for PDF Version of Online Help

This document is a PDF version of the online help. This PDF file is provided so you can easily print multiple topics from the help information or read the online help in PDF format.

Note: Some topics do not convert properly to PDF, causing format problems. Some elements of online help are completely removed from the PDF version. Those problem topics can be successfully printed from within the online help.

Contents

Taxonomy Editor User Guide	1
Contents	6
About this Guide	8
Taxonomy Editor	9
Workbench Suite	9
Overview	9
User Interface	10
Project Explorer	11
Server Explorer	13
Editor View	14
Getting Started	18
Installing Workbench	18
SSL Configuration	21
Creating a Taxonomy Project	21
Customizing Taxonomy Editor	22
Downloading Taxonomies from a Server	23
Searching for Taxonomies	23
Managing Taxonomies	26
Creating Taxonomies	26
Editing Taxonomies	26
Editing Taxonomy Properties	27
Refreshing Taxonomies to Reflect External Changes	27
Copying Taxonomies	27
Editing Categories	27
Adding a Category	28
Removing a Category	28
Copying a Category	28
Moving a Category	29

Deleting and Restoring Taxonomies	29
Comparing Taxonomy Files	30
Updating Taxonomies from the Server	30
Importing and Exporting Taxonomy Files	30
Deploying Taxonomies	32
Publishing Taxonomies	32
Building a Taxonomy Extension	32
Applying Extensions	33
Redeploying the EAR File	36
Conflicts and Validation Issues	37
Local Validity	37
Server Conflicts	37
Repair Action	38
Example: Creating and Publishing a Department Taxonomy	39
Keyboard Shortcuts	40
Dialog Boxes Reference	42
Import Taxonomies	42
Export Taxonomies Wizard	42
Find Taxonomy Dialog	44
Search Taxonomy Dialog	45
Troubleshooting	47
Eclipse Plug-in Requirements	49

About this Guide

Welcome to the *Taxonomy Editor User Guide*. This guide describes how to use Taxonomy Editor as part of HP Systinet.

This guide contains the following chapters:

- ["Taxonomy Editor" \(on page 9\)](#)
Provides an overview of the main features of Taxonomy Editor.
- ["Getting Started" \(on page 18\)](#)
Describes the installation of the main features and shows you how to create a taxonomy project.
- ["Managing Taxonomies" \(on page 26\)](#)
Explains how to create, download, edit, and compare taxonomies.
- ["Deploying Taxonomies" \(on page 32\)](#)
Shows how to publish taxonomies and build and deploy a Taxonomy Extension.
- ["Conflicts and Validation Issues" \(on page 37\)](#)
Shows how to resolve conflicts with taxonomies.
- ["Example: Creating and Publishing a Department Taxonomy" \(on page 39\)](#)
A walkthrough example of creating and deploying a new taxonomy.
- ["Keyboard Shortcuts" \(on page 40\)](#)
Keyboard shortcuts reference.
- ["Dialog Boxes Reference" \(on page 42\)](#)
Dialog box reference.
- ["Troubleshooting" \(on page 47\)](#)
Troubleshooting tips.
- ["Eclipse Plug-in Requirements" \(on page 49\)](#)
Required plug-ins when installing Workbench as an update.

Chapter 1

Taxonomy Editor

HP Systinet Workbench is a set of Workbench features that enable you to manage taxonomies in Systinet.

You can use Taxonomy Editor to create, modify, and delete taxonomies. You can also download taxonomies from, or upload them to, any number of Systinet servers.

This chapter introduces Taxonomy Editor in the following sections:

- ["Workbench Suite" \(on page 9\)](#)
- ["Overview" \(on page 9\)](#)
- ["User Interface" \(on page 10\)](#)

Workbench Suite

HP Systinet Workbench is a suite of editor tools enabling you to customize your deployment of Systinet.

Workbench consists of the following editor tools, distributed as a single Eclipse development platform:

- Customization Editor
Customizes the underlying SOA Definition Model (SDM) within Systinet.
- Taxonomy Editor
Customizes the taxonomies used to categorize artifacts in Systinet.
- Assertion Editor
Customizes the conditions applied by your business policies within Systinet.
- Report Editor
Customizes report definitions for use with Systinet.

Overview

Taxonomies are, in their simplest form, a visual representation of what your organization actually knows. A well-constructed, meaningful taxonomy enables users in your organization to quickly find the information they need to achieve their goals.

Taxonomy Editor enables you to organize and reorganize content easily, giving more flexibility for knowledge sharing in your organization

Use Taxonomy Editor to do the following:

1. **Create a Taxonomy Project.**

For details, see the following sections:

- ["Creating a Taxonomy Project" \(on page 21\)](#)
- ["Downloading Taxonomies from a Server" \(on page 23\)](#)
- ["Searching for Taxonomies" \(on page 23\)](#)

2. **Create and Manage Taxonomies.**

For details, see the following sections:

- ["Creating Taxonomies" \(on page 26\)](#)
- ["Editing Taxonomies" \(on page 26\)](#)
- ["Editing Categories" \(on page 27\)](#)
- ["Deleting and Restoring Taxonomies" \(on page 29\)](#)
- ["Comparing Taxonomy Files" \(on page 30\)](#)
- ["Updating Taxonomies from the Server" \(on page 30\)](#)
- ["Importing and Exporting Taxonomy Files" \(on page 30\)](#)

3. **Publish taxonomies to an Systinet server.**

For details, see the following sections:

- ["Publishing Taxonomies" \(on page 32\)](#)
- ["Deploying Taxonomies" \(on page 32\)](#)

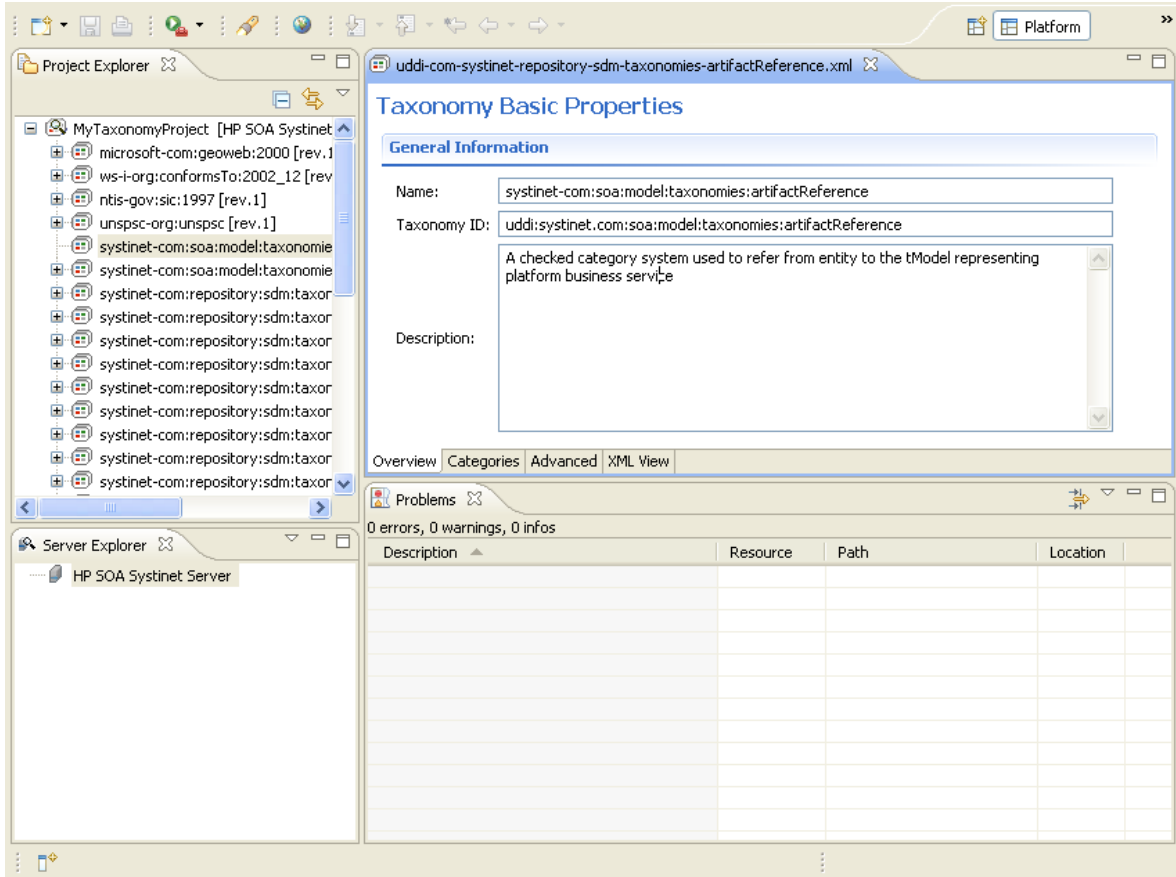
4. **Check local validity and manage conflicts.**

For details, see ["Conflicts and Validation Issues" \(on page 37\)](#).

User Interface

The default perspective is split into a number of sections, with menu options across the top, as shown in the following screenshot.

Screenshot: Taxonomy Editor UI



The platform perspective consists of the following views:

- **Project Explorer**

The tree view of your taxonomy projects. For details, see ["Project Explorer" \(on page 11\)](#).

- **Server Explorer**

The view listing Systinet server connections to the Workbench. For details, see ["Server Explorer" \(on page 13\)](#).

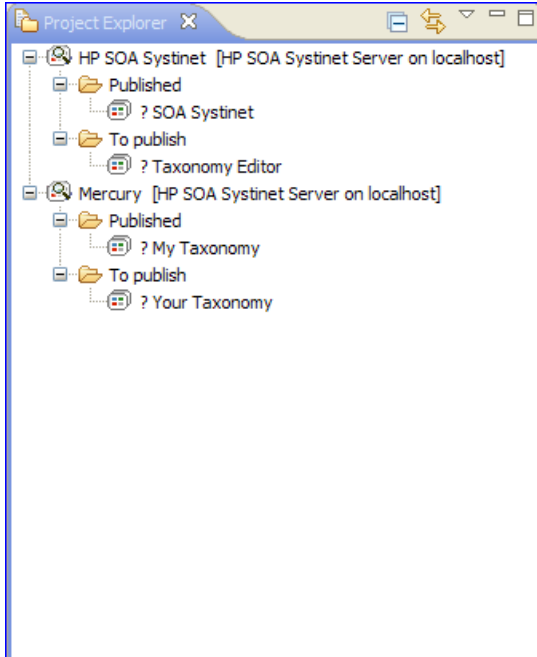
- **Editor**

The view showing the components of the taxonomy. For details, see ["Editor View" \(on page 14\)](#).

Project Explorer

Project Explorer contains a hierarchical list of projects, the taxonomies in each project, and the categories and subcategories of each taxonomy, as shown in the following screenshot.

Screenshot: Project Explorer



The Project Explorer contains additional context menu options enabling you to interact with a running Systinet server. Right-click the project name or a particular assertion, and select **HP Systinet** to view the options listed in the following tables.

Project Context Menu Options

Option	Function
Download Taxonomies	Import taxonomies from Systinet. For details, see "Downloading Taxonomies from a Server" (on page 23) .
Upload to Server	Export taxonomies to the default Systinet server. For details, see "Publishing Taxonomies" (on page 32) .
Update from Server	Update taxonomies from Systinet. For details, see "Updating Taxonomies from the Server" (on page 30) .
Remove from Server	Delete taxonomies from Systinet. For details, see "Deleting and Restoring Taxonomies" (on page 29) .
Upload To Other Server	Export taxonomies to a specified Systinet server.
Build Extension	Create a taxonomy extension for Systinet containing all the taxonomies in your project. For details, see "Building a Taxonomy Extension" (on page 32) .

Taxonomy Context Menu Options

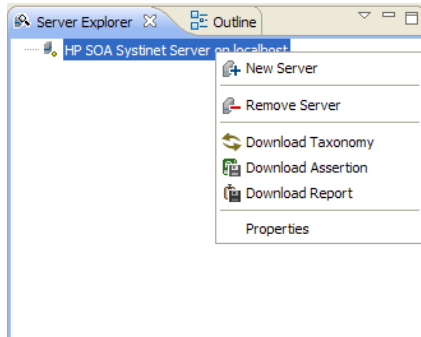
Option	Function
Upload to Server	Export a taxonomy to the default Systinet server. For details, see "Publishing Taxonomies" (on page 32) .

Option	Function
Update from Server	Update a taxonomy from Systinet. For details, see "Updating Taxonomies from the Server" (on page 30).
Remove from Server	Delete the taxonomy from Systinet. For details, see "Deleting and Restoring Taxonomies" (on page 29).
Upload To Other Server	Export a taxonomy to a specified Systinet server.
Validate Data Consistency	Check the validity of the taxonomies. For details, see "Conflicts and Validation Issues" (on page 37).
Show Taxonomy Usage	Find the artifacts that use the taxonomy for categorization. For details, see "Conflicts and Validation Issues" (on page 37).
Compare With Latest From Server	Compares the selected taxonomy with the latest version on the server.
Build Extension	Create a taxonomy extension for Systinet containing all the taxonomies in your project. For details, see "Building a Taxonomy Extension" (on page 32).

Server Explorer

The Server Explorer displays the Systinet servers connected to Workbench, as shown the following screenshot. The functionality is shared by all the Workbench editors.

Screenshot: Server Explorer View



Right-click a server in the Server Explorer to open the context menu described in the following table.

Server Explorer Context Menu Options

Option	Function
New Server	Add a server for downloading assertions and taxonomies (Assertion Editor, Taxonomy Editor, and Customization Editor).
Remove Server	Delete a server from the Server Explorer.

Option	Function
Download Taxonomy	Download a taxonomy from a server (Taxonomy Editor and Customization Editor).
Download Assertion	Download assertions from a platform server (Assertion Editor).
Download Report	Download reports from a reporting server (Report Editor).
Properties	View and edit the server name, URL, username, and password.

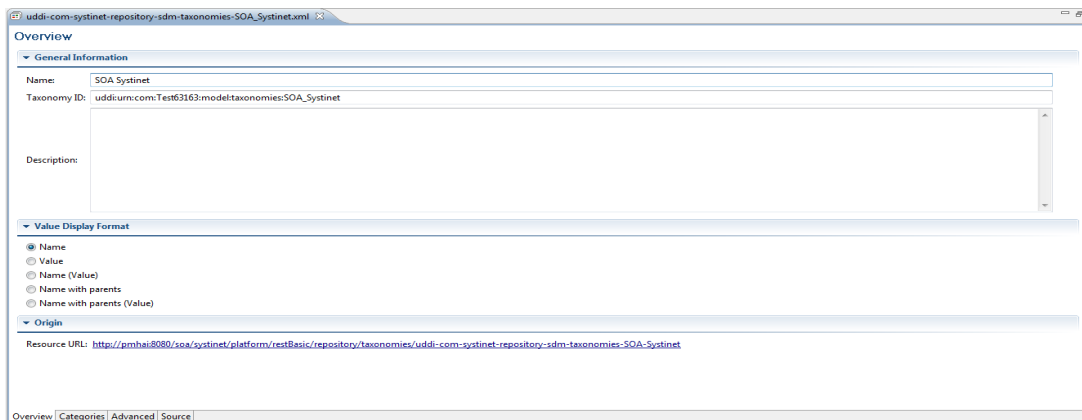
Editor View

The Editor pane is the main feature of the Taxonomy Editor UI.

It has four tabs, described in the following sections:

- **Overview Tab**

The Overview tab shows the components of the taxonomy.



The first section is General Information, where you can view and edit the following properties:

- **Name**

Name for the taxonomy. The content of the `name` element in the taxonomy's XML representation.

- **Taxonomy ID**

Identifier for the taxonomy, with the preceding `uddi:.` The value of `tModelKey` attribute in the taxonomy's XML representation.

- **Description**

Description of the taxonomy (optional).

The second section is Origin, which shows:

- **Resource URL**

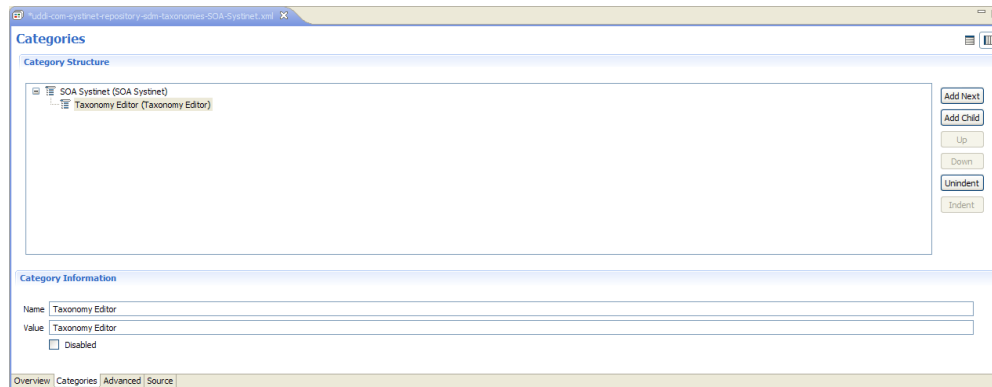
REST interface URL enabling the published taxonomy to be viewed on the server.

■ Value Display Format

These options allow changing how the value is presented.

● Categories Tab

The Categories tab enables you to change the structure and properties of taxonomy categories.

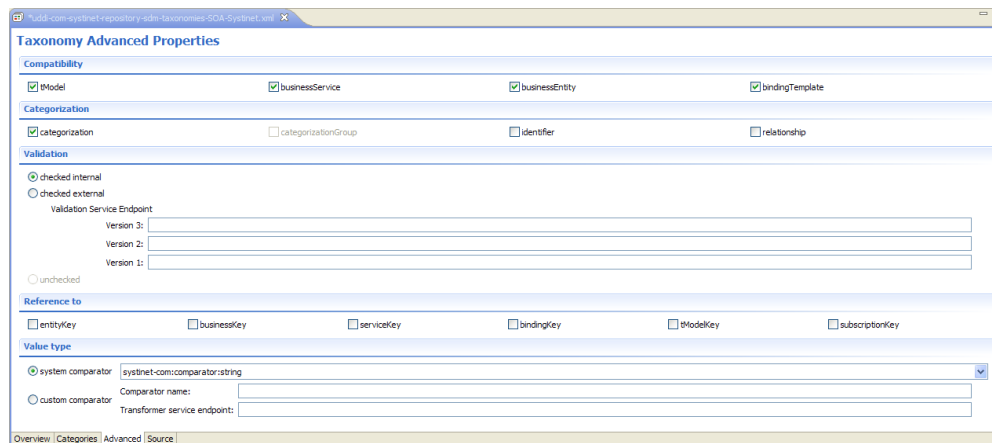


You can use the Categories tab to do the following:

- ["Adding a Category" \(on page 28\)](#)
- ["Removing a Category" \(on page 28\)](#)
- ["Copying a Category" \(on page 28\)](#)
- ["Moving a Category" \(on page 29\)](#)

● Advanced Tab

The Advanced tab enables you to set properties used with UDDI.



It is divided into the following sections:

■ Compatibility

Enables you to select one or more of the main UDDI structures for the taxonomy. For example, businessEntity, businessService, bindingTemplate, and tModel.

All structure types are selected by default which is the required setting if you want your taxonomy to integrate with UDDI Registry.

■ **Categorization**

Enables you to select from the following taxonomy types:

- **categorization**

Tags the UDDI structure with additional information, such as identity, location, and description.

- **categorizationGroup**

Groups several categorizations into one logical category. For example, a `categorizationGroup` could be a geographical location comprised of two categorizations: longitude and latitude.

The `categorizationGroup` option is disabled if the taxonomy has any categories.

- **Identifiers**

Reference published information in `businessEntities` and `tModels`.

- **Relationships**

Defines the relationship between two `businessEntities` in Publisher Assertions.

■ **Validation**

Sets whether or not the values in `keyedReferences` within the taxonomy are checked. The validation service can check the expected syntax of values. For example, a credit card number or an ISBN number.

Validation can be against Taxonomy Editor's internal validation service or against an external service.

To select an external validation service, do one of the following:

- Enter the endpoint URL.
- Leave `keyedReferences` unvalidated.

■ **Reference**

Enables you to add a reference to a key type.

■ **Value Type**

Enables you to Select a Value type for `keyValues`, using one of the following comparators:

- **systinet-com.comparator.string**

`keyValues` are treated as string values. The maximum length is 255 characters.

- **systinet-com.comparator.numeric**

`keyValues` are treated as decimal numbers. The value can have a maximum of 19 digits before the decimal point and a maximum of 6 digits after the decimal point.

- **systinet-com.comparator.date**

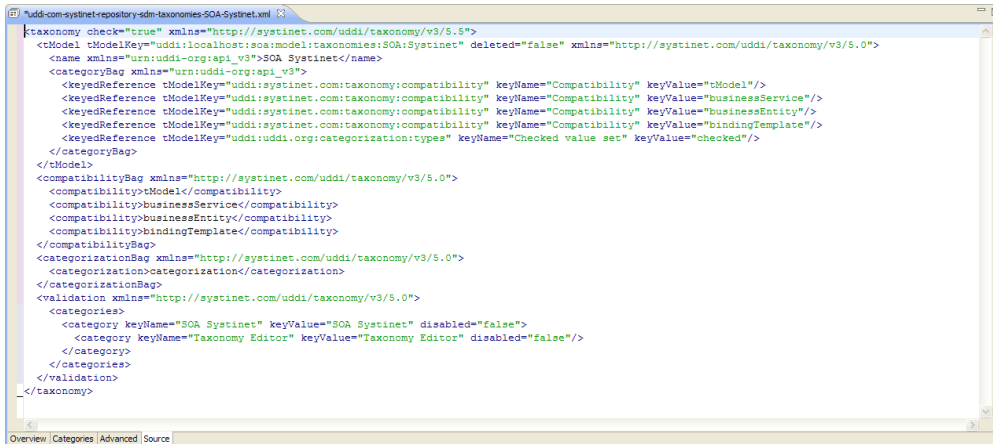
`keyValues` are treated as dates.

- **custom**

Endpoint URL of a custom comparator.

- **Source Tab**

The Source tab enables you to view and directly edit the XML representation of the taxonomy.



The screenshot shows a web browser window displaying the XML representation of a taxonomy. The XML is color-coded and includes the following elements:

```
<?xml version="1.0" encoding="UTF-8" standalone="no" ?>
<taxonomy check="true" xmlns="http://systinet.com/uddi/taxonomy/v3/5.5">
  <tModel tModelKey="uddi:localhost:soa:model:taxonomies:SOA:Systinet" deleted="false" xmlns="http://systinet.com/uddi/taxonomy/v3/5.0">
    <name xmlns="urn:uddi-org:api_v3">SOA Systinet</name>
    <categoryBag xmlns="urn:uddi-org:api_v3">
      <category xmlns="http://systinet.com/uddi/taxonomy/v3/5.0">
        <keyedReference tModelKey="uddi:systinet.com:taxonomy:compatibility" keyName="Compatibility" keyValue="tModel"/>
        <keyedReference tModelKey="uddi:systinet.com:taxonomy:compatibility" keyName="Compatibility" keyValue="businessService"/>
        <keyedReference tModelKey="uddi:systinet.com:taxonomy:compatibility" keyName="Compatibility" keyValue="businessEntity"/>
        <keyedReference tModelKey="uddi:systinet.com:taxonomy:compatibility" keyName="Compatibility" keyValue="bindingTemplate"/>
        <keyedReference tModelKey="uddi:uddi.org:categorization:types" keyName="Checked value set" keyValue="checked"/>
      </category>
    </categoryBag>
  </tModel>
  <compatibilityBag xmlns="http://systinet.com/uddi/taxonomy/v3/5.0">
    <compatibility>tModel</compatibility>
    <compatibility>businessService</compatibility>
    <compatibility>businessEntity</compatibility>
    <compatibility>bindingTemplate</compatibility>
  </compatibilityBag>
  <categorizationBag xmlns="http://systinet.com/uddi/taxonomy/v3/5.0">
    <categorization>categorization</categorization>
  </categorizationBag>
  <validation xmlns="http://systinet.com/uddi/taxonomy/v3/5.0">
    <categories>
      <category keyName="SOA Systinet" keyValue="SOA Systinet" disabled="false">
        <category keyName="Taxonomy Editor" keyValue="Taxonomy Editor" disabled="false"/>
      </category>
    </categories>
  </validation>
</taxonomy>
```

The browser window has a tab titled "uddi-com-systinetrepository-sdm-taxonomies-SOA-Systinet.xml" and a bottom navigation bar with tabs for "Overview", "Categories", "Advanced", and "Source".

Chapter 2

Getting Started

This chapter describes the prerequisites for working with taxonomies in Taxonomy Editor. It contains the following sections:

- ["Installing Workbench" \(on page 18\)](#)
- ["SSL Configuration" \(on page 21\)](#)
- ["Customizing Taxonomy Editor" \(on page 22\)](#)
- ["Creating a Taxonomy Project" \(on page 21\)](#)
- ["Downloading Taxonomies from a Server" \(on page 23\)](#)
- ["Searching for Taxonomies" \(on page 23\)](#)

Installing Workbench

Systinet Workbench is an Eclipse development platform distributed as a zip file, `hp-systinet-workbench-4.10-win32.zip` or as a plugin for an existing Eclipse environment, `hp-systinet-workbench-4.10-plugin.zip`.

Note: For supported platforms and known issues, see `readme.txt` alongside the archive.

Note: Systinet Workbench requires Java SE Development Kit (JDK) 1.6.0 (32-bit version only) or higher. You must include the path to this version of the JDK in the `JAVA_HOME` environment variable.

To install Systinet Workbench as a new Eclipse platform:

- Extract the archive to your required location, referred to in this document as `WB_HOME`.

Note: The path must not be longer than 97 characters.

To install Systinet Workbench to an existing Eclipse platform:

1. Ensure that your Eclipse platform contains the necessary plug-ins. For details, see ["Eclipse Plug-in Requirements" \(on page 49\)](#).
2. In your current Eclipse SDK (3.3 or later), use the software updates feature to install Systinet Workbench.
Select **Help>Software Updates>Find and Install...**
The Install/Update dialog opens.
3. In the Install/Update dialog, select **Search for new features to install**, and click **Next**.
The Install – Update Sites to Visit dialog opens.
4. In the Update Sites to Visit dialog, click **New Archived Site**.
The Select Local Archive Site dialog opens.

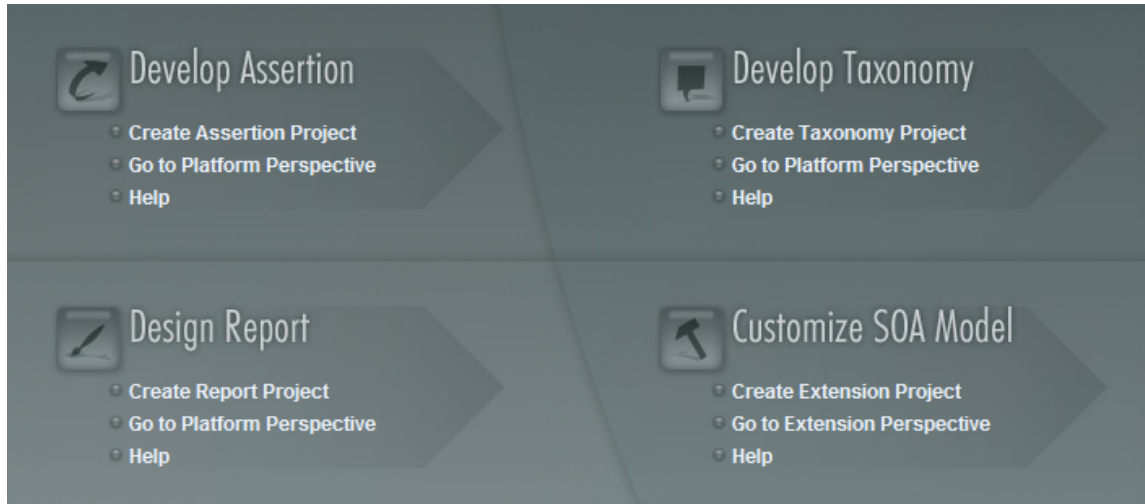
5. Locate and select `hp-systinet-workbench-4.10-plugin.zip`, and then click **Open**.
The Edit Local Site dialog opens.
6. In the Edit Local Site dialog, if required, rename the local archive name, and click **OK**.
7. In the Install – Update Sites to Visit dialog, select the new local archive, and then click **Finish**.
The Updates – Search Results dialog opens.
8. Select the modules from the archive that you want to install:
 - **Workbench Extra 4.10**
Systinet Workbench splash screen.
 - **Taxonomy Editor 4.10**
Note: Required for Customization Editor.
 - **Customization Editor 4.10**
 - **Assertion Editor 4.10**
 - **Report Editor 4.10**
 - **Common Plugin 4.10**
Shared components used by the editors.Click **Next**.
The Install – Feature License dialog opens.
9. In the Feature License dialog, select **I accept the terms in the license agreements**, and click **Next**.
The Install – Installation dialog opens.
10. In the Installation dialog, if required, change the installation location, and then click **Finish**.
11. If you install `Workbench Extra 4.10` make the following configuration changes:
 - Remove `-showsplash org.eclipse.platform` from `ECLIPSE_HOME/eclipse.ini`.
 - Edit `ECLIPSE_HOME/configuration/config.ini` and make the following changes:
 - Set `osgi.splashPath=platform:/base/plugins/com.systinet.tools.workbench` .
 - Set `eclipse.product=com.systinet.tools.workbench.ide`

To Start Systinet Workbench:

- Execute `WB_HOME/workbench/start.exe`.

The first time you start Workbench, the welcome screen opens.

Screenshot: Workbench Welcome Screen



Select one of the options to open one of the editor tools, start a new editing project, or view the documentation set.

You can return to the welcome screen from any of the editor tools by selecting **Help>Welcome** from the menu options.

By default, Workbench runs in 'normal' mode which prevents users from uploading system taxonomies (IDs start with `uddi:systinet.com:soa:model:taxonomies`) and the Report Editor `.rptlibrary` file to Systinet servers. If you need to work with system taxonomies or want to upload the `.rptlibrary` file you can switch Workbench into 'admin' mode.

Caution: Be extremely careful when working with system taxonomies, Systinet uses some hard-coded values from system taxonomies, changing or removing them may cause errors.

To Switch Workbench to Admin Mode

1. Open `WB_HOME/configuration/config.ini` with a text editor.
2. Add `mode=admin` to `config.ini`.
3. Restart Workbench.

Tip: Systinet Workbench is memory-intensive. If you experience performance issues, HP recommends increasing the memory allocation.

To increase the memory allocation for Systinet Workbench:

1. Open `WB_HOME/workbench/start.ini` for editing.
2. Set these new values:
 - `-Xms128m`
 - `-Xmx1024m`
3. Save your changes.
4. Restart Workbench.

Tip: Systinet Workbench downloads from Systinet may time out. If you experience issues, HP recommends increasing the time out.

To increase the time out for Systinet Workbench:

1. Open `WB_HOME/workbench/start.ini` (or `eclipse.ini` for stand-alone installation) for editing.
2. Set the new value:

```
-Dorg.systinet.platform.rest.Client.timeout=200000
```

The value is in milliseconds with a default value of 120000 (2 minutes).
3. Save your changes.
4. Restart Workbench.

SSL Configuration

By default, Workbench trusts all Systinet server certificates. You may want Workbench to verify Systinet certificates.

To Verify Systinet Server Certificates:

- Add the following options to `WB_HOME/workbench/start.ini`:

```
-Dcom.hp.systinet.security.ssl.verifyCert=true  
-Djavax.net.ssl.trustStore=USER_TRUSTSTORE  
-Djavax.net.ssl.trustStorePassword=TRUSTSTORE_PASS  
-Djavax.net.ssl.trustStoreType=TRUSTSTORE_FORMAT
```

If Systinet is configured for 2-way SSL, you must provide Workbench certificates to Systinet.

To Provide Workbench Client Certificates to Systinet:


- Add the following options to `WB_HOME/workbench/start.ini`:

```
-Djavax.net.ssl.keyStore=USER_KEYSTORE  
-Djavax.net.ssl.keyStorePassword=KEYSTORE_PASS  
-Djavax.net.ssl.keyStoreType=KEYSTORE_FORMAT
```

Creating a Taxonomy Project

To work with taxonomies, you need a Taxonomy Project. You can create any number of Taxonomy Projects to help organize your work.

To Create a Taxonomy Project:

1. Do one of the following:
 - In the Workbench Welcome page, click **Create Taxonomy Project**.
 - Click **New**  to open the Select a Wizard window, and select **HP Systinet>Taxonomy Project**.
 - From the menu, select **File>New>Taxonomy Project**.
 - Press **Alt+Shift+N**, and then press **R**, to open the Select a Wizard window. Then select **HP Systinet>Taxonomy Project**.The New Taxonomy Project dialog box opens.
2. In the New Taxonomy Project dialog box, enter the following parameters:

Parameter	Definition
Project Name	The name of your assertion project.
Taxonomy ID Prefix	The URN prefix to apply to all taxonomies in the project.
Create from Existing Extension	Select this option if you want to create a new project from a previous taxonomy extension. If selected, input the path or browse for the location of the taxonomyn extension.
Use Default Location	If selected, Taxonomy Editor stores the project in your default workspace. If unselected, input the path or browse for an alternative workspace.

3. Click **Next** to select or create a server.

Note: If no servers are currently defined, the dialog box continues to ["Creating a Taxonomy Project" \(on page 21\)](#).

4. Do one of the following:

- Select **Create a New Server**, and click **Next**.

Continue to ["Creating a Taxonomy Project" \(on page 21\)](#).

- Select **Use an Existing Server**, select the server from the list and input its credentials, and then click **Next**.

Continue to ["Creating a Taxonomy Project" \(on page 21\)](#).

5. In the New Server dialog box, add the required parameters, and then click **Next**.

6. Select the taxonomies to download from the server. Optionally, select **Show System Taxonomies** to view system taxonomies for selection.

7. Click **Finish**.

Customizing Taxonomy Editor

Some settings are customizable in Taxonomy Editor.

To Change Taxonomy Editor Preferences:

1. Select **Window>Preferences**.

The Preferences dialog box opens.

2. In the tree menu, select **HP Systinet>Taxonomy Editor**.

3. You can change the following:

- **Default taxonomy namespace**

The default namespace setting is 5.5. However, version 5.5 taxonomies cannot be used in HP SOA Registry Foundation 5.0. Make sure you select the appropriate setting.

- **Data consistency**

Select **Validate before publishing taxonomies** to validate changes before publishing them to the server

Downloading Taxonomies from a Server

Initially, Taxonomy Editor does not contain any taxonomies. To edit Systinet taxonomies, you must download them from a server.

To Download Taxonomies from a Server:

1. In Server Explorer, right-click the server containing the taxonomies you need to open its context menu, and select **Download Taxonomies**.

The Download Taxonomies wizard opens.

2. Select the taxonomies to download and click **Next**.

The Choose Location dialog box opens.

3. Select the project to add the taxonomies to, and then click **Finish**.

Taxonomy Editor displays the download progress. When the download is complete, the taxonomies are visible in Project Explorer.

Searching for Taxonomies


This section describes the search facilities provided by Taxonomy Editor.

Quick Find is the easiest way to find a taxonomy.

To use Quick Find:

1. Do one of the following:
 - Click **Search**, and then select **Quick Jump**.
 - Press **Ctrl+J**.

The Find Taxonomy dialog box opens. For details, see ["Find Taxonomy Dialog" \(on page 44\)](#).

2. In the input field, enter a search string.
3. Click **View Menu** , and then select one of the following options:

- **Show in the tree without opening detail**
Shows the taxonomy in the tree but does not open its details page.
- **Case-sensitive**
Enables a case-sensitive or case-insensitive search.

4. In the `in project` field, select in which project to search for the taxonomy.

Taxonomies that match your search criteria are displayed in the Matching taxonomies pane.

5. Select the required taxonomy and click **Open taxonomy**.

The taxonomy opens in the Editor pane.

For a more detailed search, you can use Advanced Search to do the following:

- Search for a specific property type.
- Search according to a specific value of a property.
- Search different text strings: full text, regular expression, or whole word.

To Use Advanced Search:

1. Do one of the following:
 - Select **Search>Search**.
 - Press **Ctrl+H**.

The Search dialog box opens.
2. Select the **Taxonomy Search** tab to open the dialog box. For details, see "[Search Taxonomy Dialog](#)" (on page 45).
3. In the `Containing` text field, do one of the following:
 - Enter the text to search.
 - Select text used in a previous search by using the drop-down list.
4. In `Search only in`, choose the taxonomy properties or categories to search.
5. In `Search controls`, select one or more of the following:
 - **Case-sensitive**
To perform a case-sensitive search.
 - **Whole words only**
To search for whole word matches.
 - **Regular expression**
To search using regular expressions.
6. In `Scope`, select one of the following:
 - **Workspace**
To search the Eclipse workspace.
 - **Selected resources**
To search all entities selected in Project Explorer.
 - **Working set**
To customized resources from Project Explorer.
7. Click **Choose**.
The Select Working Sets wizard opens.
Do one of the following:
 - Select from existing working sets.
 - Create new working sets.

8. Click **Search**.

The results are displayed in the Search view of the UI.

Chapter 3

Managing Taxonomies


This chapter describes how to work with taxonomies, as detailed in the following sections:

- ["Creating Taxonomies" \(on page 26\)](#)
- ["Editing Taxonomies" \(on page 26\)](#)
- ["Editing Categories" \(on page 27\)](#)
- ["Deleting and Restoring Taxonomies" \(on page 29\)](#)
- ["Comparing Taxonomy Files" \(on page 30\)](#)
- ["Updating Taxonomies from the Server" \(on page 30\)](#)
- ["Importing and Exporting Taxonomy Files" \(on page 30\)](#)

Creating Taxonomies

In ["Creating a Taxonomy Project" \(on page 21\)](#), you created a Taxonomy Project and looked at how to download taxonomies. The following section describes how to create new taxonomies.

To Create a New Taxonomy:

1. Do one of the following:
 - Click **New**  to open the Select a Wizard dialog box, and select **HP Systinet>Taxonomy**, and then click **Next**.
 - Select **File>New>Taxonomy**.
 - Press **Alt+Shift+N** to open the context menu, and then select **Taxonomy**.
The New Taxonomy wizard opens.
2. In the New Taxonomy wizard, enter the required parameters.

Note: A default Taxonomy ID and Filename are assigned according to the Taxonomy Name entered. The `Source Folder` is assigned by default, according to whether there is an active extension project. You can change these parameters to meet your requirements.
3. Click **Finish** to create the taxonomy.
The taxonomy is now visible in Project Explorer and the Taxonomy Editor opens.
4. Open the Categories tab and add the categories you need. For details, see ["Editing Categories" \(on page 27\)](#).
5. Open the Advanced tab and enter the required parameters, as described in ["Editor View" \(on page 14\)](#).

Editing Taxonomies

A taxonomy can be modified in the following ways:

- ["Editing Taxonomy Properties" \(on page 27\)](#)
- ["Refreshing Taxonomies to Reflect External Changes" \(on page 27\)](#)
- ["Copying Taxonomies" \(on page 27\)](#)

Editing Taxonomy Properties

To Edit Taxonomy Properties:

1. Double-click the taxonomy in Project Explorer to open the Editor view.
2. Edit properties as required in the tabs of the Editor view. For details, see ["Editor View" \(on page 14\)](#).
3. Click **Save**.

The changed status of the taxonomy is displayed in Project Explorer.

Refreshing Taxonomies to Reflect External Changes

If you want the Editor to reflect changes made outside Taxonomy Editor, you can refresh the taxonomy.

To refresh a taxonomy, do one of the following:

- Right-click the individual taxonomies or the project in Project Explorer to open the context menu, and then select **Refresh**.
- Select the individual taxonomies or the project in Project Explorer, and then press **F5**.

The selected taxonomies are then updated to reflect external changes.

Copying Taxonomies

You can copy or move taxonomies from one project to another using cut, copy, or paste.

To Copy or Move a Taxonomy to a Different Project:

1. Right-click the taxonomy in Project Explorer and select **Copy** or **Cut**.
2. Right-click the project to which you want to copy or move the taxonomies and select **Paste**.

The taxonomies are then either copied or moved to the other project.

A pasted taxonomy has the status:

- **New**
If a taxonomy of that name is new to that location.
- **Modified**
If an existing taxonomy is overwritten.

Editing Categories

A taxonomy can be modified in the following ways:

- ["Adding a Category" \(on page 28\)](#)
- ["Removing a Category" \(on page 28\)](#)

- ["Copying a Category" \(on page 28\)](#)
- ["Moving a Category" \(on page 29\)](#)

Adding a Category

To Add a New Category to a Taxonomy:

1. Open the required taxonomy in the Editor pane and click the **Categories** tab.
2. Do one of the following:
 - Click **Add Next** to add a new category at the same level.
 - Click **Add Child** to add a new sub-category.

The New Category wizard opens.

3. Enter the category properties, as follows:
 - **Name**
Name for the category. This represents the value of the `keyName` attribute in the taxonomy's XML representation.
 - **Value**
Identifier for the category. This represents the value of the `keyValue` attribute in the taxonomy's XML representation.
 - **Disabled**
Select this check box to make sure the category *cannot* be used in an artifact.
4. Click **Finish**.

The new category is displayed in **Category Structure**.

Removing a Category

To Remove a Category:

1. Open the required taxonomy in the Editor pane and click the **Categories** tab.
2. Right-click the category in the Category Structure pane to open its context menu, and select **Delete**.

The deleted category is no longer visible in the Category Structure pane.

Copying a Category

To Copy a Category:

1. Open the required taxonomy in the Editor pane and click the **Categories** tab.
2. Right-click the required source category in the Category Structure pane to open its context menu, and then select **Copy** or **Cut**.
3. Right-click the required destination category in the Category Structure pane to open its context menu.
4. Do one of the following:

- Select **Paste** to add the category as a sub-category.
- Select **Paste as Sibling** to add the category at the same level.

Moving a Category

To Move a Category:

1. Open the required taxonomy in the Editor pane and click the **Categories** tab.
2. Select the required category in the Category Structure pane.
3. Do one of the following:
 - Click **Up**, to move a category up.
 - Click **Down**, to move a category down.
 - Click **Unindent**, to move a category to the left.
 - Click **Indent**, to move a category to the right.

Note: To move multiple categories at the same time, you must select categories that are consecutive.

Deleting and Restoring Taxonomies

You can also delete taxonomies and restore them from your local history.

To Delete a Local Taxonomy:

1. Right-click the taxonomy in Project Explorer to open its context menu, and then select **Delete**.
2. Confirm deletion of the taxonomy when prompted.

To Restore a Deleted Taxonomy:

1. Right-click the project in Project Explorer to open its context menu and select **Restore from Local History**.

The Restore from Local History dialog box opens.
2. Select the check box of the required taxonomy and click **Restore**.
3. Download the published taxonomy from the server, as described in “Downloading Taxonomies from a Server”.

To Delete a Taxonomy from the Server:

1. Right-click the taxonomy in Project Explorer to open its context menu and select **HP Systinet>Remove from Server**.
2. Choose if you also want to delete the local copy.
3. Confirm deletion of the taxonomy when prompted.

Note: Taxonomy Editor automatically performs a data consistency check before removing the taxonomy from the server. For details, see “Conflict With Server”.

Comparing Taxonomy Files

If you are importing or exporting taxonomies between servers, it is essential to compare taxonomies to keep track of changes.

Taxonomy Editor enables you to compare the following taxonomies:

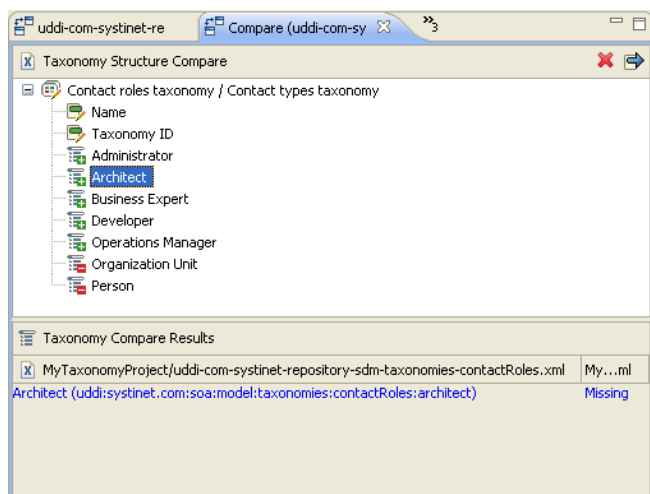
- Local taxonomy against the server taxonomy.
- Server taxonomy against a local history taxonomy.

To Compare Taxonomies:

Right-click the taxonomies you want to compare in Project Explorer to open a context menu, and then select one of the following:

- **Compare With>Each Other**
- **HP Systinet>Compare with the latest on server**
- **Compare With>Local History**

The results are displayed in the Compare view.



Updating Taxonomies from the Server

If the most current version of a taxonomy exists on a server, you can update your local copy to reflect any changes.

To Update a Local Taxonomy:

- Right-click the taxonomy in Project Explorer to open the context menu, and then select **HP Systinet>Update from Server**.

Note: Confirmation is required to overwrite existing taxonomies.

Importing and Exporting Taxonomy Files

You can import and export taxonomies between your projects and your local file system.

To Import a Taxonomy from your File System:

1. In Project Explorer, right-click the taxonomy project to which you want to import taxonomies to open its context menu, and then select **Import>Taxonomy**.

The Import Taxonomies wizard opens. For details, see ["Import Taxonomies" \(on page 42\)](#).

2. Browse for the folder from which you want to export taxonomies in the `Folder` field.

The selected folder is displayed in the left pane.

3. Click the check box of the chosen folder.

Compatible file types are displayed in the right pane.

4. Click the check box of the files you want to import and, and then browse for the required import folder in the `Into folder` field.

5. Click **Finish**.

6. Publish the taxonomies to an Systinet repository, as described in ["Publishing Taxonomies" \(on page 32\)](#).

Tip: When importing a taxonomy from a file whose file name already exists in the local folder, Taxonomy Editor asks if you want to overwrite the taxonomy. If you click **Yes** or **Yes To All**, the current taxonomy is updated by attributes and *categories* from the XML file and its status is changed to modified.

To Export a Taxonomy:

1. Right-click the taxonomy in Project Explorer to open its context menu, and then select **Export** to open the Export wizard. For details, see ["Export Taxonomies Wizard" \(on page 42\)](#).
2. Select the required file type and click **Next** to open the corresponding wizard.
3. Browse for the required destination and enter the required parameters.
4. Select whether to overwrite existing files.
5. Click **Finish**.

Note: You can export a taxonomy to any file type supported by Eclipse. For example:

- XML file
- JAR archive
- EAR-deployable or JAR-deployable archive

Chapter 4

Deploying Taxonomies

This chapter explains how to deploy a set of taxonomies as an Extension Project.

You can publish individual taxonomies as described in ["Publishing Taxonomies" \(on page 32\)](#).

Alternatively, create a taxonomy extension and deploy it as described in the following sections:

- ["Building a Taxonomy Extension" \(on page 32\)](#)
- ["Applying Extensions" \(on page 33\)](#)
- ["Redeploying the EAR File" \(on page 36\)](#)

Publishing Taxonomies

Publishing is the process of updating changes to an Systinet server.

To Publish a Taxonomy:


- Right-click the taxonomy in the Project Explorer to open its context menu, and then select **HP Systinet>Upload to Server**. Multiple taxonomies may be selected by holding **CTRL** and selecting them.

The taxonomy is published to the defined Systinet server.

Caution: You cannot publish a System taxonomy to a remote repository.

The status of a taxonomy after publishing updates as described in the following table.

Taxonomy Status After Publication

Status	Description	Impact
UP-TO-DATE	Local and server versions are identical.	Publication was successful, including any modifications.
NEW ?	Local version of the taxonomy has not been published to the server.	Publication was unsuccessful and the status is unchanged. Possibly due to one of the following: <ul style="list-style-type: none">• Exception error.• Breach of server data integrity.
MODIFIED >	Changes have been made to a local version of a taxonomy after it has been published.	
SYSTEM 	Taxonomies automatically generated by Systinet. For system use only.	Changes to these taxonomies cannot be published.

Building a Taxonomy Extension

After publishing taxonomies, you can create a Taxonomy Extension.

To Build a Taxonomy Extension:

1. Right-click the taxonomy project in Project Explorer to open its context menu, and expand **HP Systinet** > **Build Extension** to open the location browser.
2. Enter a name for the extension project and browse for the location you want to save the project to, and click **Save**.

All taxonomies from the selected taxonomy project are copied to the Taxonomy Extension.

Applying Extensions

You can extend HP Systinet by adding libraries or JSPs to the deployed EAR files, by modifying the data model, by configuring the appearance of the UI, and by importing prepackaged data.

Extensions to HP Systinet come from the following sources:

- **Customization Editor**

Typical extensions created by Customization Editor contain modifications to the data model, and possibly data required by the customization (taxonomies). They may also contain new web components, which may include custom JSP and Java code.

Caution: If your extension contains new artifact types, HP Systinet does not create default ACLs for them. Set default ACLs for the new artifact types in HP Systinet using the functionality described in "How to Manage Default Access Rights" in the HP Systinet Administration Guide.

- **Assertion Editor, Report Editor, and Taxonomy Editor**

These extensions contain assertion, reporting, and taxonomy data only. They do not involve changes to the data model.

The Setup Tool opens the EAR files, applies the extensions, and then repacks the EAR files.

Apply extensions according to one of the following scenarios:

- **Single-Step Scenario**

The Setup Tool performs all the processes involved in applying extensions, including any database alterations, as a single step.

Follow this scenario if you have permission to alter the database used for HP Systinet.

To Apply Extensions to HP Systinet in a Single Step:

- a. Make sure that all extensions are in the following directory:

```
SOA_HOME/extensions
```

The Setup Tool automatically applies all extensions in that directory.

Note: If you are applying extensions to another server, substitute the relevant home directory for `SOA_HOME`.

- b. Stop the server.
- c. Start the Setup Tool by executing the following command:

```
SOA_HOME/bin/setup.bat(sh)
```

- d. Select the **Apply Extensions** scenario, and click **Next**.

The Setup Tool automatically validates the step by connecting to the server, copying the extensions, and merging the SDM configuration.

- e. Click **Next** for each of the validation steps and the setup execution.

Note: This process takes some time.

- f. Click **Finish** to end the process.

- g. Deploy the EAR file:

- o **JBoss**

The Setup Tool deploys the EAR file automatically.

If you need to deploy the EAR file to JBoss manually, see ["Redeploying the EAR File" \(on page 36\)](#).

- o **Other Application Servers**

You must deploy the EAR file manually.

For application server-specific details, see "Deploying the EAR File" in the *Installation and Deployment Guide*.

- h. Restart the server.

Caution: Applying an extension that modifies the SDM model may drop your full text indices.

`SOA_HOME/log/setup.log` contains the following line in these cases:

```
Could not apply alteration scripts, application will continue with  
slower DB drop/create/restore scenario. ... .
```

In these cases, reapply full text indices as described in the "Enabling Full Text Search" section of the *Installation and Deployment Guide*.

- **Decoupled DB Scenario**

Database SQL scripts are run manually. The Setup Tool performs the other processes as individual steps that are executable on demand. This scenario is useful in organizations where the user applying extensions does not have the right to alter the database, which is done by a database administrator.

Follow this scenario if the user who applies extensions does not have permission to modify the database.

To Apply Extensions and Modify the Database Separately:

- a. Make sure that all extensions are in the following directory:

```
SOA_HOME/extensions
```

The Setup Tool automatically applies all extensions in that directory.

- b. Stop the server.

- c. Start the Setup Tool by executing the following command:

```
SOA_HOME/bin/setup -a
```

- d. Select the **Apply Extensions** scenario, and click **Next**.
- e. Click **Next**, to execute the extension application, and exit the Setup Tool.
- f. Provide the scripts from `SOA_HOME/sql` to the database administrator.

The database administrator can use `all.sql` to execute the scripts that drop and recreate the database schema.

- g. Execute the Setup Tool in command-line mode to finish the extension application:

SOA_HOME/bin/setup -c

- h. Redeploy the EAR file:

- o **JBoss**

The Setup Tool deploys the EAR file automatically.

If you need to deploy the EAR file to JBoss manually, see ["Redeploying the EAR File" \(on page 36\)](#).

- o **Other Application Servers**

You must deploy the EAR file manually.

For application server-specific details, see "Deploying the EAR File" in the *Installation and Deployment Guide*.

Caution: In some specific circumstances (underscores and numbers in property names), extension application may fail because HP Systinet cannot create short enough database table names (31 character maximum for most databases).

The error in `setup.log` resembles the following:

```
[java] --- Nested Exception ---
[java] java.lang.RuntimeException: cannot reduce length of identifier
'ry_c_es_Artifact02s_c_priEspPty01Group_c_priEspPty01',
rename identifier elements or improve the squeezing algorithm
[java] at
com.systinet.platform.rdbms.design.decomposition.naming.impl.
BlizzardNameProviderImpl.getUniqueLimitedLengthName(
BlizzardNameProviderImpl.java:432)
[java] at
com.systinet.platform.rdbms.design.decomposition.naming.impl.
BlizzardNameProviderImpl.filterTableName
(BlizzardNameProviderImpl.java:374)
```

This is due to HP Systinet using an older table naming algorithm in order to preserve backward compatibility with HP SOA Systinet 3.00 and older versions.

If you do not require backwards compatibility with these older versions, you can change the table naming algorithm.

To Change the Table Naming Algorithm:

1. Open `SOA_HOME/lib/pl-repository-old.jar#META-INF/rdbPlatformContext.xml` with a text editor.

2. In the `rdb-nameProvider` bean element, edit the following property element:

```
<property name="platform250Compatible" value="false"/>
```

3. Save `rdbPlatformContext.xml`

This solution only impacts properties with multiple cardinality. If the problem persists or you need to preserve backwards compatibility, then review the property naming conventions in your extension.

Redeploying the EAR File

After using the Setup Tool to apply extensions or updates, you must redeploy the EAR file to the application server. For JBoss, you can do this using the Setup Tool.

Note: For other application servers, follow the EAR deployment procedures described in the "Deploying the EAR File" in the Installation and Deployment Guide.

To Redeploy the EAR file to JBoss:

1. Stop the application server.
2. Start the Setup Tool by executing the following command:

```
SOA_HOME/bin/setup.bat(sh)
```

3. Select the **Advanced** scenario, and click **Next**.
4. Scroll down, select **Deployment**, and then click **Next**.

When the Setup Tool validates the existence of the JBoss Deployment folder, click **Next**.

5. Click **Finish** to close the Setup Tool.
6. Restart the application server.

Chapter 5

Conflicts and Validation Issues

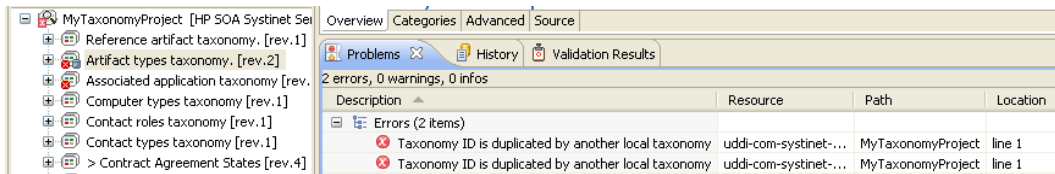
Editing taxonomies can result in validation and conflict issues, as described in the following sections:

- ["Local Validity" \(on page 37\)](#)
- ["Server Conflicts" \(on page 37\)](#)
- ["Repair Action" \(on page 38\)](#)

Local Validity

By default, the validity of local taxonomies is constantly checked as you modify them.. Invalid taxonomies are marked in Project Explorer and the associated errors are listed in the Problems view. For example, errors for two taxonomies with the same ID can be seen in the following screenshot.

Screenshot: Invalid Local Taxonomies



To disable validation, from the menu, deselect **Build automatically**.

Server Conflicts

A local taxonomy and the version on a server can come into conflict either when the version on the server is changed or when changes to the local version affect artifacts on the server.

Conflicts are displayed when you try to publish the taxonomy. An error message is displayed, stating that the taxonomy could not be published.

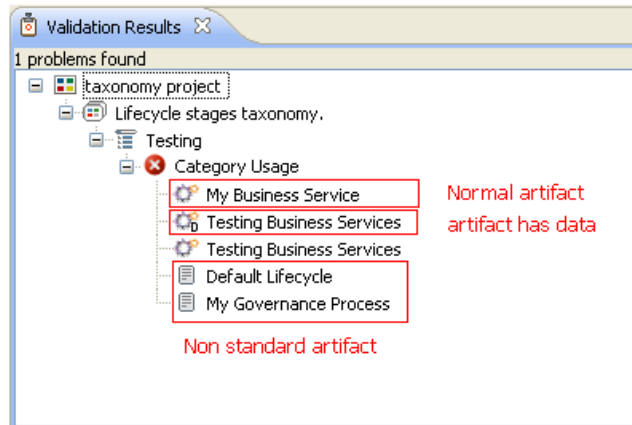
To help prevent conflicts, you can do the following:

- Right-click the taxonomy in Project Explorer to open its context menu, and then select one of the following:
 - **HP Systinet>Show Taxonomy Usage**

All artifacts categorized by the taxonomy are displayed in the Taxonomy Usage view.
 - **HP Systinet>Validate Data Consistency**

Conflicts are displayed in the Validation Results view.

Screenshot: Validation Results



Repair Action

The Data Consistency Check reports artifacts that use categories which no longer exist in the taxonomy project.

Taxonomy Editor features a Repair Action which enables you to resolve these inconsistencies.

To Repair an Inconsistency:

1. In the Validation Results view, expand the problem category, and right-click an artifact to open its context menu, then select one of the following:
 - **Remove Referenced Category From Artifact**
 - **Change Category**
2. Re-run validation.

Note: Some conflicts relate to the validity of policy and lifecycle data (non-standard artifacts). The repair actions cannot resolve these conflicts.

Chapter 6

Example: Creating and Publishing a Department Taxonomy

In this example, you create and deploy a new taxonomy containing the identities of departments in your organization.

Before proceeding, you must do the following:

- Define your Systinet server.
- Update the local taxonomies, as described in "[Updating Taxonomies from the Server](#)" (on page [30](#)).

To Create a Department Taxonomy:

1. Create a new taxonomy, entering `Departments` as the Taxonomy Name.
For details of the procedure, see "[Creating Taxonomies](#)" (on page [26](#)).
2. Open the Editor for the Departments taxonomy and select the **Categories** tab.
3. Add the following categories:
 - HR
 - IT
 - Payroll
 - Finance
 - Sales
 - Development
 - QAFor details of the procedure, see "[Adding a Category](#)" (on page [28](#)).
4. Press **Ctrl+S** to save the taxonomy.
The Departments taxonomy is now visible in Project Explorer.
5. Right-click the Departments taxonomy to open its context menu, and then select one of the following:
 - **HP Systinet>Publish Taxonomy**
To publish the taxonomy to the defined Systinet server.
 - **HP Systinet>Publish To Other Server**
To publish the taxonomy to a different server.

Appendix A

Keyboard Shortcuts

Shortcut	Action	Context
Ctrl+Alt+S	Add Systinet server.	Global
Ctrl+N	New taxonomy.	Global
Alt+A, Insert	Add next category.	Categories tab
Alt+C	Add child category.	Categories tab
Alt+U, Ctrl+ArrowUp	Move category up.	Categories tab
Alt+D, Ctrl+ArrowDown	Move category down.	Categories tab
Alt+E, Ctrl+ArrowLeft	Move category left (unindent).	Categories tab
Alt+I, Ctrl+ArrowRight	Move category right (indent).	Categories tab
F2	Navigate to Category Name field.	Categories tab
Esc	Ignore changes in current test field and switch to Category Structure	Categories tab
Ctrl+PgDn	Switch to next editor tab.	Taxonomy Editor
Ctrl+PgUp	Switch to previous editor tab.	Taxonomy Editor
F12	Activate Editor.	Global
Ctrl+W, Ctrl+F4	Close current editor.	Global
Ctrl+Shift+W, Ctrl+Shift+F4	Close all editors.	Global
Ctrl+F6	Go to next editor.	Global
Ctrl+Shift+F6	Go to previous editor.	Global
Ctrl+Shift+E	Switch to editor.	Global

Shortcut	Action	Context
Ctrl+J	Quick find taxonomy.	Global
Ctrl+H	Search taxonomy or category.	Global
Alt+Shift+W	Show editing resource in Taxonomy Editor.	Global
F5	Refresh items.	Global
Ctrl+S	Save changes for active editor.	Global
Ctrl+Shift+S	Save changes for all editors.	Global
Ctrl+C, Ctrl+Insert	Copy	Global
Ctrl+X, Shift+Delete	Cut	Global
Delete	Delete	Global
Ctrl+V, shift+Insert	Paste	Global
Ctrl+Shift+L	Show key assist	Global

Appendix B

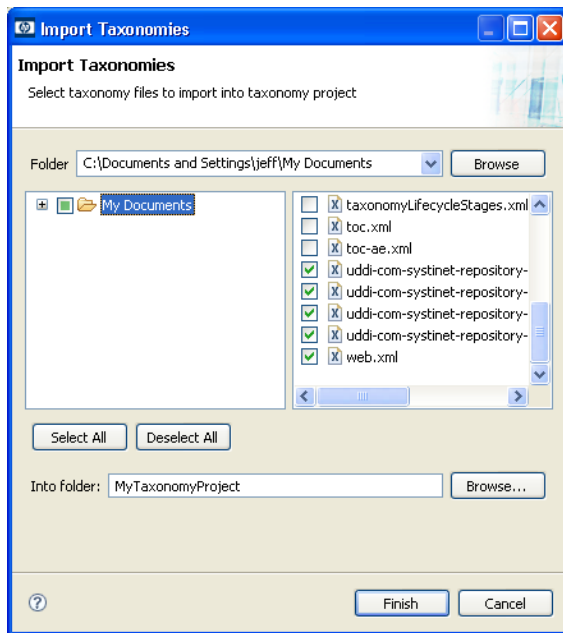
Dialog Boxes Reference

Each Taxonomy Editor input dialog is described in the following sections:

- ["Import Taxonomies" \(on page 42\)](#)
- ["Export Taxonomies Wizard" \(on page 42\)](#)
- ["Find Taxonomy Dialog" \(on page 44\)](#)
- ["Search Taxonomy Dialog" \(on page 45\)](#)

Import Taxonomies

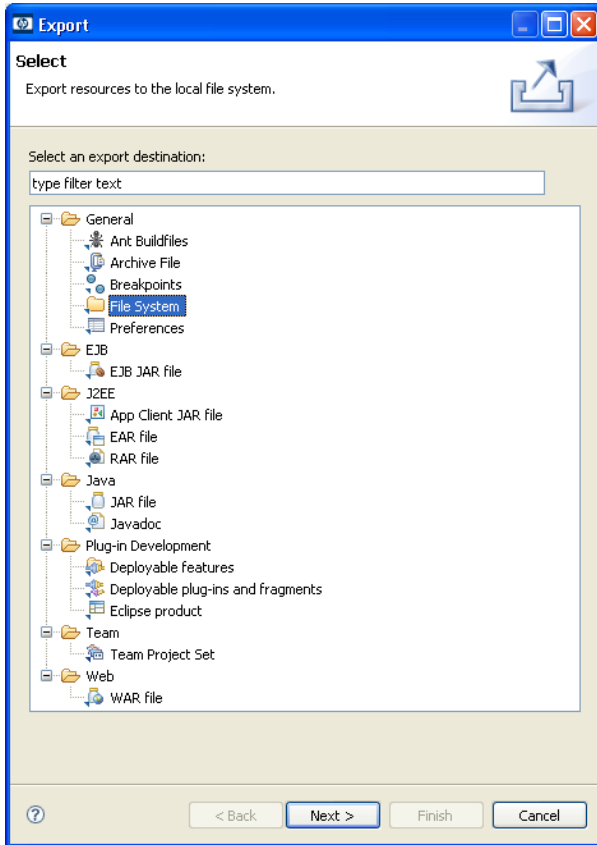
Select taxonomy files to import into your taxonomy project:



Parameter	Definition
Folder	Browse for the source folder containing the taxonomy files you want to import.
Left Pane	Select the source folder containing the taxonomy files you want to import.
Right Pane	Select the individual taxonomy files you want to import.
Into Folder	Browse for the destination folder into which you want to import the selected taxonomies.

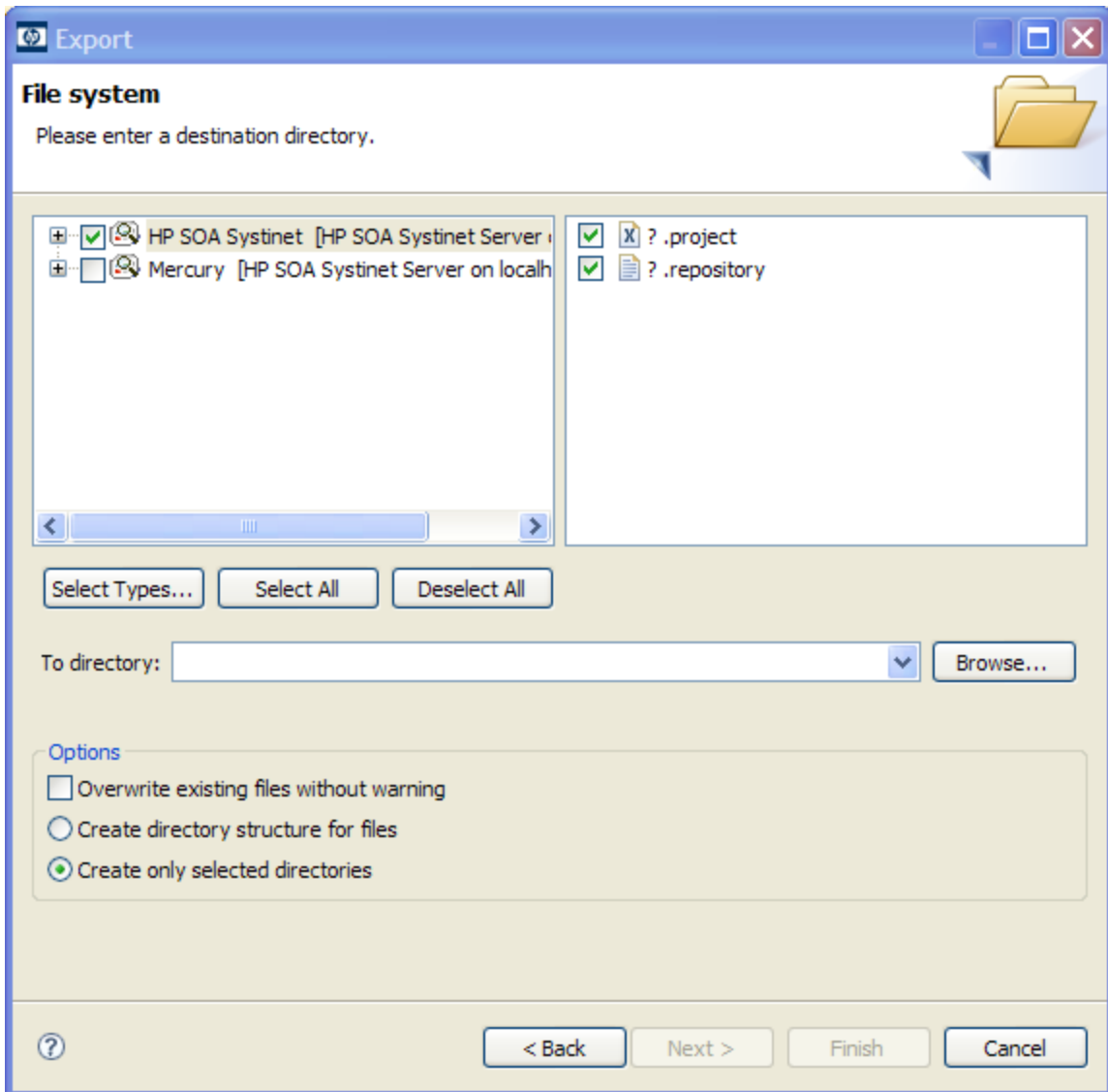
Export Taxonomies Wizard

Select a destination for the taxonomies you wish to export:



Parameter	Definition
Select an export destination	Enter text to filter your search.
Tree View	Select File System as your destination folder.

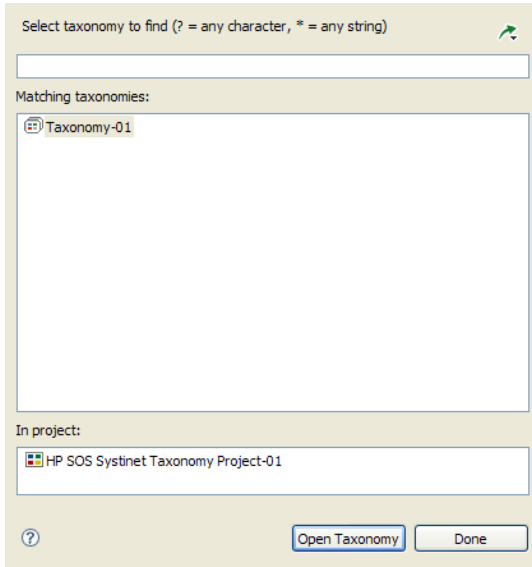
Select the taxonomies you want to export, then browse for the destination directory:



Parameter	Definition
Left Pane	Select the project from which you want to export taxonomies.
Right Pane	Select the individual taxonomies you want to export.
To Directory	Browse for and select the directory into which you want to export the selected taxonomies.

Find Taxonomy Dialog

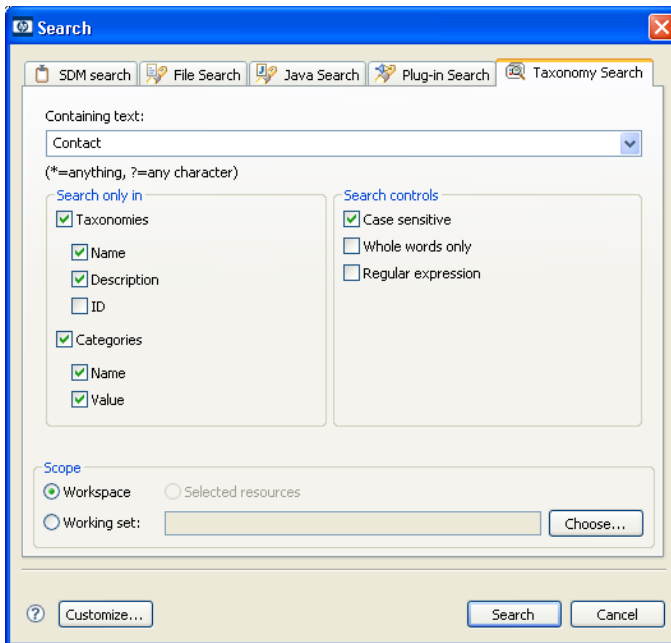
A quick search for matching taxonomies:



Parameter	Definition
Top Field	Enter text to filter your search results.
Matching Taxonomies	A list of taxonomies matching your search request.
In Project	Select the project in which you want to search for taxonomies.

Search Taxonomy Dialog

An advanced search for matching taxonomies:



Parameter	Definition
Containing Text	Enter text to search or use the drop-down menu to select a previous search parameter.
Working Set	Browse for and select a working set as a scope for your search.

Appendix C

Troubleshooting

Case	Indications	Resolution	Type	Severity
A taxonomy was changed on the remote server while you were modifying your local version.	Your local taxonomy is CONFLICTING . The local version cannot be published and its modifications are kept.	To replace the local taxonomy with the server version, use the taxonomy context action HP Systinet>Update Taxonomy . You might want to first copy your local version to a temporary location.	Conflict	Error
A taxonomy was published that has the same file name as a new taxonomy you are trying to publish to the remote server.	Taxonomy is CONFLICTING . The local version cannot be published. Changes to the local taxonomy and server remain in Project Explorer.	To replace the local taxonomy with the remote server version, use the taxonomy context action HP Systinet>Update Taxonomy . You might want to first make a backup copy your local version.	Conflict	Error
The taxonomy you have created has the same ID as an existing taxonomy on the remote server	The local taxonomy cannot be published. Changes to the local taxonomy and server remain in Project Explorer. The Validation Results include a node giving the taxonomy ID.	Change the ID of the new taxonomy.	Validation Results	Error
You have changed the ID of a taxonomy used by artifacts.	The local taxonomy cannot be published and remains MODIFIED . The Validation Results list artifacts that use the taxonomy.	To restore the original taxonomy, use the taxonomy context action HP Systinet>Update Taxonomy .	Validation Results	Error
A category that you modified is used by other artifacts.	The local taxonomy cannot be published and remains MODIFIED . Validation Results lists artifacts	To restore the original taxonomy, use the taxonomy context action HP Systinet>Update Taxonomy .	Validation Results	Error

Case	Indications	Resolution	Type	Severity
	that use the category.			
A new taxonomy ID is identical to that of another local taxonomy.	An error message for this taxonomy is shown.	Change taxonomy ID to another value.	Local Inconsistency	Error
Taxonomy ID format is invalid.	A warning message for this taxonomy is shown.	Change taxonomy ID to valid format.	Local Inconsistency	Warning
Category value is duplicated by another category in the same taxonomy.	An error message for this taxonomy is shown.	Change the category value.	Local Inconsistency	Error
Taxonomy file name contains invalid character for REST URL.	An error message for this taxonomy is shown.	Change file name so that it does not contain invalid character.	Local Inconsistency	Error

Appendix D

Eclipse Plug-in Requirements

Ensure that the following prerequisite plug-ins are added to your Eclipse development platform based on the required Workbench components:

- DTP 1.6

Required for Customization Editor and Report Editor.

<http://www.eclipse.org/datatools/downloads.php>

- EMF Runtime 2.4.0

Required for Customization Editor and Report Editor.

<http://www.eclipse.org/modeling/emf/downloads/?project=emf>

- GEF Runtime 3.4

Required for Customization Editor and Report Editor.

<http://archive.eclipse.org/tools/gef/downloads/drops/R-3.4.0-200806091334/>

- WTP 3.0

Required for Customization Editor and Report Editor.

<http://archive.eclipse.org/webtools/downloads/drops/R3.0/R-3.0-20080616152118/>

- XSD Runtime 2.4

Required for Customization Editor and Report Editor

<http://www.eclipse.org/modeling/mdt/downloads/?project=xsd>

- BIRT 2.2.0

Required for Report Editor.

http://download.eclipse.org/birt/downloads/build_list.php