

HP WebInspect Enterprise

for the Windows[®] operating system

Software Version: 10.00

Implementation Guide

Document Release Date: June 2013

Software Release Date: June 2013



Legal Notices

Copyright Notice

Copyright 2013 Hewlett-Packard Development Company, L.P.

Restricted Rights Legend

Confidential computer software. Valid license from HP required for possession, use or copying. Consistent with FAR 12.211 and 12.212, Commercial Computer Software, Computer Software Documentation, and Technical Data for Commercial Items are licensed to the U.S. Government under vendor's standard commercial license.

Disclaimer of Warranty

The information contained herein is subject to change without notice. The only warranties for HP products and services are set forth in the express warranty statements accompanying such products and services. Nothing herein should be construed as constituting an additional warranty. HP shall not be liable for technical or editorial errors or omissions contained herein.

Trademark Acknowledgements

Microsoft and Windows are U.S. registered trademarks of Microsoft Corporation.

Adobe and Acrobat are trademarks of Adobe Systems Incorporated.

Other Acknowledgements

This product contains the following Apache open source component: Log4Net (<http://logging.apache.org/log4net/>). This component was modified from its original form and incorporated into this software product. To learn more about the apache software license, please visit <http://www.apache.org/licenses/LICENSE-2.0>.

Documentation Updates

This guide's title page contains the following identifying information:

- Software Version number, which indicates the software version.
- Document Release Date, which changes each time the document is updated.
- Software Release Date, which indicates the release date of this version of the software.

To check for recent updates, or to verify that you are using the most recent edition of a document, visit the following URL:

<http://h20230.www2.hp.com/selfsolve/manuals>

You will also receive updated or new editions if you subscribe to the appropriate product support service. Contact your HP sales representative for details.

Support

For information or assistance regarding WebInspect Enterprise, contact customer support.

You can open a support case for WebInspect Enterprise via e-mail, online, or by telephone. These options are designed to provide easier access and improved customer satisfaction.

E-Mail (Preferred Method)

Send an e-mail to fortifytechsupport@hp.com describing your issue. Please include the product name so we can help you faster.

Online (Fortify Support Portal)

Access your account at the Fortify Support Portal at <https://support.fortify.com>

If you do not have an account, you forgot your username or password, or you need any assistance regarding your account, please contact us at fortifytechsupport@hp.com or (650) 735-2215.

Telephone

Call our automated processing service at (650) 735-2215. Please clearly provide your name, telephone number, the name of the product, and a brief description of the issue.

You can access the HP Application Security Community containing customer forum and blogs at:

<http://h30499.www3.hp.com/t5/Application-Security-Community/ct-p/sws-AS>

You can also visit the HP software support Web site at:

<http://support.openview.hp.com/>

This web site provides contact information and details about the products, services, and support that HP Software offers.

HP Software online support provides customer self-solve capabilities. It provides an efficient way to access interactive technical support tools needed to manage your business. As a valued support customer, you can benefit by using the HP Software Support web site to:

- Search for knowledge documents of interest
- Submit and track support cases and enhancement requests
- Download software patches
- Manage support contracts
- Look up HP support contacts
- Review information about available services
- Enter into discussions with other software customers
- Research and register for software training

Most of the support areas require that you register as an HP Passport user and sign in. Many also require a support contract.

To register for an HP Passport ID, go to:

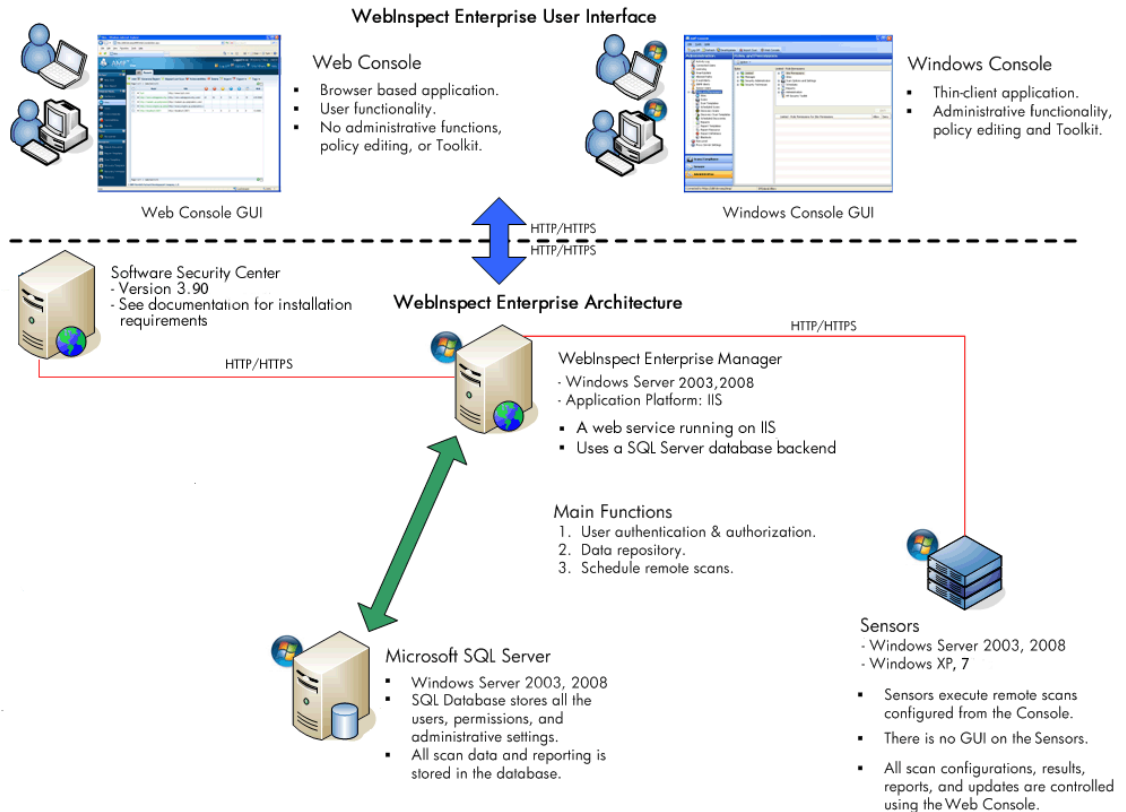
<http://h20229.www2.hp.com/passport-registration.html>

Contents

WebInspect Enterprise Component Diagram	7
Database Size and Growth Settings	7
WebInspect Enterprise Manager Account Requirements	8
SQL Database Account Requirements	8
WebInspect Enterprise Manager License Components	8
WebInspect Enterprise Manager Installation Troubleshooting	8
IIS Settings and File Permissions Used by WebInspect Enterprise	9
SQL Login	9
Verify IIS Started/Running	9
Account Rights and Privileges	10
.NET Framework Registration	10
Restarting IIS Quick Commands	11
WebInspect Enterprise Manager Logging Customization	11
WebInspect Enterprise Manager Log Debug Settings	11
WebInspect Enterprise Initialize Log Debug Settings	12
WebInspect Enterprise Scheduler Service Log Debug Settings	12
WebInspect Enterprise Task Service Log Debug Settings	13
Failure to Install SSL Certificate on 64-Bit OS	13
WebInspect Enterprise Manager Data Path Customization	17
Modifying the Web.config File (Moving the Storage Folders)	17
Modifying the Web.logging.config File (Moving Logging Locations)	18
Encrypting the Communication between WebInspect Enterprise and SQL 2005	18
Enabling WebInspect Enterprise to Use SSL	19
Editing the Encrypted SQL Connection String Section of web.config	19
Encrypt Connection String in the TaskService.exe.config File after Modifying the web.config File	19
WebInspect Enterprise Sensor Installation	19
WebInspect Enterprise Sensor Remote SQL Server Standard Edition Connectivity	21
WebInspect Enterprise Sensor Logging	22
WebInspect Enterprise Sensor Scan Logs	22
WebInspect Enterprise Sensor Directory Path Customization	22
Modifying the SharedSettings.config File	22
Retaining Copies of Scan Data on the WebInspect Enterprise Sensor	23
General Database Settings for WebInspect Enterprise (SQL Server 2005)	23
Database Maintenance for WebInspect Enterprise (SQL Server 2005)	23
Check Database Integrity Task	24
Database Fragmentation Maintenance	25
Reorganize Index	25
Rebuild Index	26
Update Statistics Task	27

WebInspect Enterprise Component Diagram

The following illustration depicts the main components of the WebInspect Enterprise System. These include the WebInspect Enterprise application, database, sensors, and users. These constitute the basis of the WebInspect Enterprise system for scheduled and remote scanning.



Database Size and Growth Settings

The initial size for the database for installation purposes can be as small as 1GB. This is not large enough for any scan data. The recommended minimum of 20GB will provide for the installation and the initial scanning objectives. This amount of space will not be enough to keep one year's worth of scan data for most organizations.

As each application scan will vary in size and scope, an average size scan is different for each customer. The best way to establish database size and growth requirements is to monitor the database size and compare it with scan activity. The best practice is to start with the minimum 20GB size requirement and note the unused space in the database after installation. As scans are performed, keeping a weekly data set comparing the number of scans with database growth will provide the best metric for average scan size at the customer site. Comparisons of the data set showing weekly, monthly, or quarterly metrics will provide the DBA with guidelines for proper size and growth settings.

WebInspect Enterprise Manager Account Requirements

WebInspect Enterprise users (both individuals and groups) are configured as Software Security Center (SSC) users and then assigned roles in WebInspect Enterprise.

WebInspect Enterprise interacts with two administrator accounts in SSC. One of them is a general SSC administrator. The other is the WebInspect Enterprise Service, which is used to share project versions and scans between SSC and WebInspect Enterprise, and which must be given the role in SSC of WebInspect Enterprise System.

WebInspect Enterprise requires two service accounts:

- WebInspect Enterprise Manager User - Domain user account with local administrator rights on the WebInspect Enterprise Manager
- WebInspect Enterprise Sensor User - Domain user account. No other privileges are required.

The SSC administrator specified during WebInspect Enterprise installation is added to the WebInspect Enterprise System Administrator role automatically. Also, if you rerun the WebInspect Enterprise Initializer and specify a new SSC administrator who is not already a WebInspect Enterprise System Administrator, you can assign that role to that SSC administrator. This is useful when moving the WebInspect Enterprise application to another computer.

SQL Database Account Requirements

If you are installing WebInspect Enterprise for the first time, you must have privileges to create a database (or your database administrator must create a blank database and assign ownership to you).

WebInspect Enterprise Initialize is used for the database creation and WebInspect Enterprise Manager configuration changes such as changing the user account used to access the database.

WebInspect Enterprise Manager License Components

The WebInspect Enterprise license contains the license information for each component of the WebInspect Enterprise environment.

Sensors (Fixed) - The “WebInspect Sensor” Windows Service installed by the WebInspect installation connects to WebInspect Enterprise for the purpose of performing remotely scheduled or requested scans. It receives instructions exclusively from the configurable connection to a WebInspect Enterprise Manager.

The license information for sensors and users is located in the WebInspect Enterprise Console under **Administration** → **Licensing**.

WebInspect Enterprise Manager Installation Troubleshooting

The most common errors encountered when installing WebInspect Enterprise are shown as either a connection message error at the final phase of the WebInspect Enterprise Initialize program, or when the first connection attempt is made with a console. Most of these error messages are general in nature. Consulting the logs for either WebInspect Enterprise Initialize or WebInspect Enterprise Manager should give some indication as to the nature of the error. The suggestions below are the most common quick methods to resolving the issues.

IIS Settings and File Permissions Used by WebInspect Enterprise

** File Root Path = C:\Program Files\HP\HP WebInspect Enterprise 10.00\ManagerWS\

** IIS Virtual Directory \WIE\

Folder	IIS Authentication	Notes	File Permissions
\	Integrated		User is Network Service with 'read' access.
\App_GlobalResources	Integrated		
\App_Themes	Integrated		
\bin	Integrated		WIE Service User must be a local administrator with 'read' access.
\Dashboard	Integrated		
\Login	Anonymous	Getting a 401 status on this page means Anonymous auth has been disabled	
\SmartUpdateService	Anonymous	Getting a 401 status when logging in to Smart Update means Anonymous auth has been disabled	
\WebConsole	Integrated		

SQL Login

If the installation or initialization of the database is not successful, you must set up a SQL login. Then a SQL database user in the WebInspect Enterprise database must be assigned to the role “amp_server” and associated with that login. WebInspect Enterprise Initialize can then be run to specify the SQL login for connecting to the database.

Verify IIS Started/Running

If you cannot connect to WebInspect Enterprise using the console after installation, first verify that the WebInspect Enterprise web service is started by accessing the main service of WebInspect Enterprise via the URL in a browser. The default location of the service is:

`http(s)://<hostname>/WIE/managerservice.asmx`

If an error page is returned, the WebInspect Enterprise web service is not running due to an IIS configuration or permissions issue. Refer to the following sections for help in resolving these issues.

If this page is returned, then the WebInspect Enterprise web service is running and you should consult the WebInspect Enterprise Manager Logs for any errors. See [WebInspect Enterprise Manager Logging Customization](#) on page 11 for log locations and instructions.

Account Rights and Privileges

Make sure the user logged into the machine during installation is a member of the local administrators group.

Make sure the WebInspect Enterprise Manager User is a member of the local administrators group.

If the Windows installation has been locked down, then the WebInspect Enterprise Web Service may not have sufficient rights to run. A quick test is to have the WebInspect Enterprise App Pool run as the Local System account.

Use the following procedure to set the application pool to run as another user:

- 1 Right-click My Computer → Manage → Services and Applications → Internet Information Services (IIS) Manager → Application Pools → WIEAppPool → Identity.
- 2 Change the user from “Network Service” to “Local System” in the drop-down menu.

If changing the application pool to run as the Local System account corrects the problem, start checking the permission details for the application pool user (Network Service by default) to enable appropriate permissions.

The application pool user (web service user) should have Read, Write, Read and Execute, List Folder Contents privileges for the following directory:

Windows\Microsoft.NET\Framework\v2.0.50727\Temporary ASP.NET Files

The application pool user (web service user) should have Read, Read and Execute, and List Folder Contents privileges for the following directories:

\Program Files\HP\HP WebInspect Enterprise 10.00\

On Windows Server 2003

\Documents and Settings\All Users\Application Data\Microsoft\Crypto\RSA

On Windows Server 2008

\ProgramData\Microsoft\Crypto\RSA

These are some of the more common directory permissions to research. It may be necessary to use a tool such as Procmon from Microsoft (originally produced by SysInternals) to show real-time file and registry access problems.

.NET Framework Registration

Make sure .NET extensions are permitted in IIS

- 1 Right-click My Computer → Manage → Services and Applications → Internet Information Services (IIS) Manager → Web Service Extensions
- 2 Make sure the .NET 2.x extensions are marked as permitted.

Re-register the .NET framework with IIS

Each version of the .NET framework installed on the server includes the entire set of .NET components. The aspnet_regiis program is used to load and register the associated framework with IIS. The path below is the location of this tool for the current .NET 2.0 framework:

\WINDOWS\Microsoft.NET\Framework\v2.0.50727\aspnet_regiis.exe

Using the command prompt, you can re-install the framework and register it with IIS at the root web directory using the aspnet_regiis with the -i option.

The -i option will Install this version of ASP.NET and update scriptmaps at the IIS metabase root and for all scriptmaps below the root.

The command is formatted as: aspnet_regiis.exe -i

Restarting IIS Quick Commands

You must restart IIS during the troubleshooting steps to apply changes. Usually it is best to restart IIS whenever you make changes to the user rights for service accounts or user accounts related to the installation. The easiest method for restarting IIS is to use the following commands from the command prompt. The iisreset command will stop and start all the web sites and application pools running on the server. The additional options are self-explanatory.

- iisreset
- iisreset /stop
- iisreset /start

WebInspect Enterprise Manager Logging Customization

Use the WebInspect Enterprise logs to troubleshoot any errors that occur during the initialization process or when trying to use WebInspect Enterprise after installation. Increasing the verbosity of the logging is recommended in the event you need to send them to support for review.

The logs used for troubleshooting WebInspect Enterprise installations are:

- WebInspect Enterprise Initialize Log(s)
- WebInspect Enterprise Manager Log(s)
- WebInspect Enterprise Scheduler Service Log(s)
- WebInspect Enterprise Task Service Log(s)

These logs have a default 2MB size limitation and will keep a rolling set of five log files. Turning on debug logging is recommended for troubleshooting, but it is best to reset them to the default level of INFO after troubleshooting is complete.

WebInspect Enterprise Manager Log Debug Settings

Increasing the logging level for the WebInspect Enterprise Manager.

- 1 Edit the Web.logging.config file in the following directory:
 \Program Files\HP\HP WebInspect Enterprise 10.00\ManagerWS\
- 2 Change the logging level from “INFO” to “DEBUG” in the following section:

```
<root>
  <level value="INFO"/>
  <appender-ref ref="ASPNetOut"/>
  <appender-ref ref="RollingFile"/>
</root>
```

- 3 Save the file.

The logging output is located in the ManagerWS_trace.log in the following directory:

On Windows Server 2003

\Documents and Settings\All Users\Application Data\HP\WIE\Manager\

On Windows Server 2008

\ProgramData\HP\WIE\Manager\

If additional files are created, they will be named ManagerWS_trace.log.1, ManagerWS_trace.log.2, etc.

WebInspect Enterprise Initialize Log Debug Settings

Increase the logging level for WebInspect Enterprise Initialize

- 1 Edit the AmpInitialize.exe.logging.config file in the following directory:
\Program Files\HP\HP WebInspect Enterprise 10.00\Initializer
- 2 Change the logging level from “INFO” to “DEBUG” in the following section:

```
<root>  
  <level value="INFO"/>  
  <appender-ref ref="RollingFile"/>  
</root>
```

- 3 Save the file.

The logging output is located in the Initializer_trace.log in the following directory:

\Program Files\HP\HP WebInspect Enterprise 10.00\Initializer\

WebInspect Enterprise Scheduler Service Log Debug Settings

To increase the logging level for the WebInspect Enterprise Scheduler Service:

- 1 Edit the Scheduler.exe.logging.config file in the following directory:
\Program Files\HP\HP WebInspect Enterprise 10.00\Scheduler
- 2 Change the logging level from “INFO” to “DEBUG” in the following section:

```
<root>  
  <level value="INFO"/>  
  <appender-ref ref="RollingFile"/>  
</root>
```

- 3 Save the file.

The logging output is located in the Scheduler_trace.log in the following directory:

On Windows Server 2003

\Documents and Settings\All Users\Application Data\HP\WIE\Scheduler

On Windows Server 2008

\ProgramData\HP\WIE\Scheduler

If additional files are created, they will be named Scheduler_trace.log.1, Scheduler_trace.log.2, etc.

WebInspect Enterprise Task Service Log Debug Settings

To increase the logging level for the WebInspect Enterprise Task Service:

- 1 Edit the TaskService.exe.logging.config file in the following directory:
\\Program Files\HP\HP WebInspect Enterprise 10.00\Scheduler
- 2 Change the logging level from “INFO” to “DEBUG” in the following section:

```
<root>  
  <level value="INFO"/>  
  <appender-ref ref="RollingFile"/>  
</root>
```

- 3 Save the file.

The logging output is located in the TaskService_trace.log in the following directory:

On Windows Server 2003

\\Documents and Settings\All Users\Application Data\HP\WIE\TaskService

On Windows Server 2008

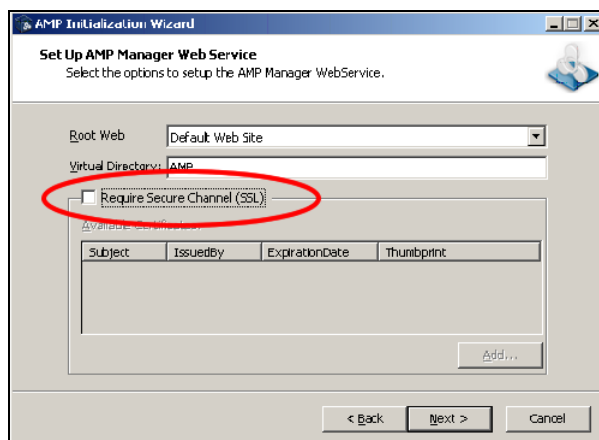
\\ProgramData\HP\WIE\TaskService

If additional files are created, they will be named TaskService_trace.log.1, TaskService_trace.log.2, etc.

Failure to Install SSL Certificate on 64-Bit OS

When initializing the WebInspect Enterprise Manager under a 64-bit operating system, the WebInspect Enterprise Initialize program may display an error message indicating that it “could not add SSL.” Although the program generated a certificate and placed it in the store, the program did not attach the certificate to IIS.

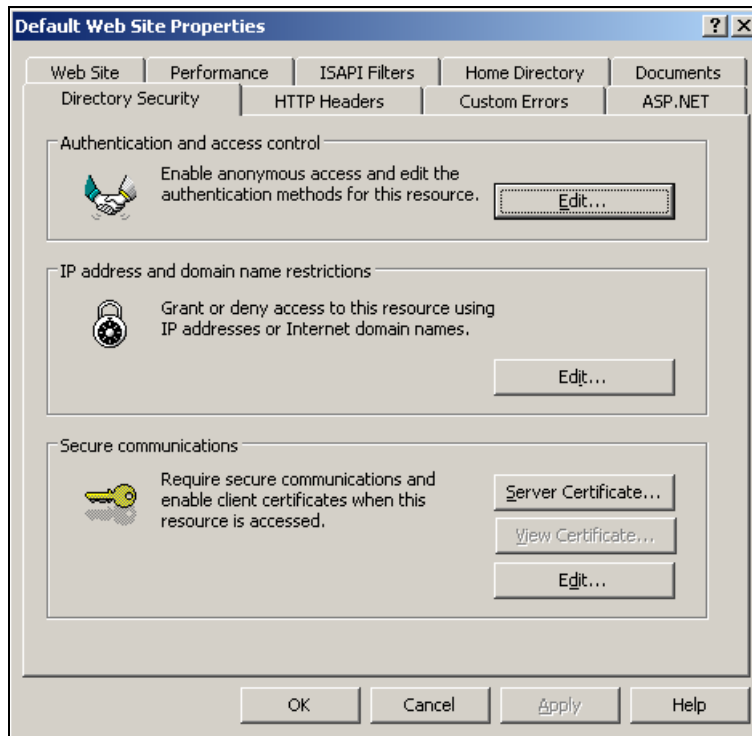
You must restart the WebInspect Enterprise Initialize program and proceed as usual until the program displays the *Set Up WebInspect Enterprise Manager Web Service* dialog. At this point, make sure the **Require Secure Channel (SSL)** option is not selected and then continue.



After the WebInspect Enterprise Initialize program completes successfully, use the following procedure to attach the certificate.

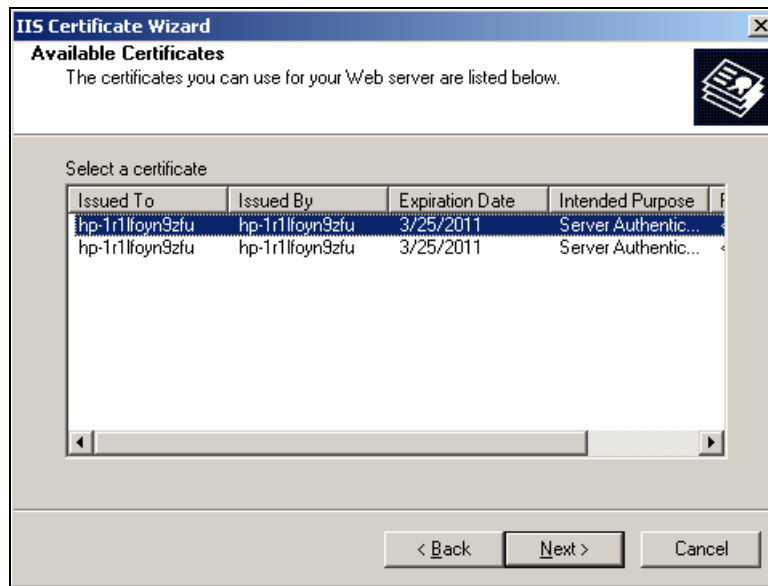
Windows Server 2003

- 1 Navigate to Administrative Tools and run the IIS Manager.
- 2 Expand the computer node and the Web Sites folder.
- 3 Right-click **Default Web Site** and select **Properties**.
- 4 On the *Default Web Site Properties* dialog, select the **Directory Security** tab and click **Server Certificate**.

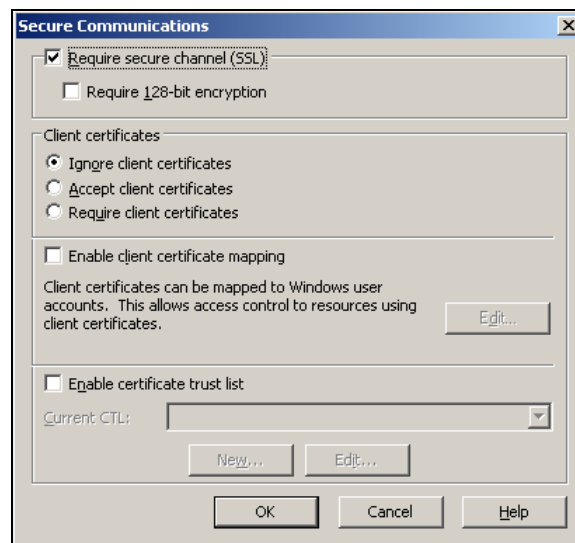


- 5 On the first page of the Certificate Wizard, click **Next**.
- 6 Select **Assign an existing certificate** and click **Next**.

- 7 You should see the certificate that was generated during the WebInspect Enterprise Initialize that you did not use in the certificate list.



- 8 Select the certificate and click **Next**.
- 9 Click **Next** without changing the SSL port.
- 10 Click **Next**. Click the Finish button.
- 11 On the Summary page of the Wizard, click **Next**. This should return you to the *Default Web Site Properties* dialog.
- 12 In the **Secure Communications** group, click **Edit**.
- 13 Select **Require Secure Channel (SSL)** and click **OK**.

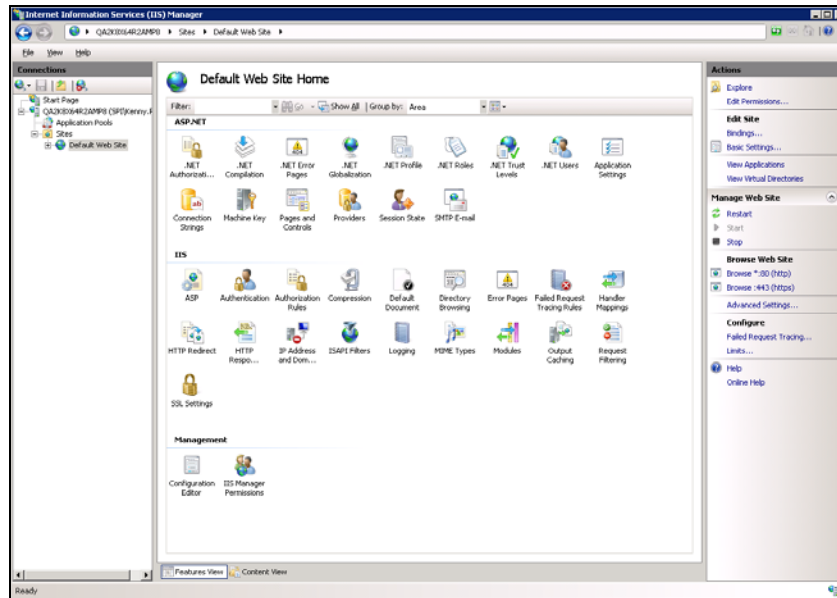


- 14 Click **OK** to close the *Default Web Server Properties* dialog and finalize your changes.

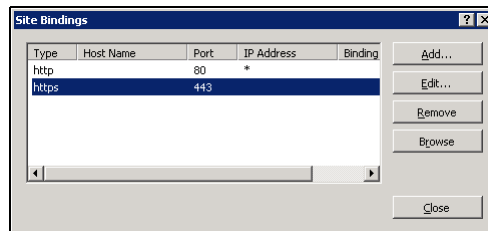
Windows Server 2008

- 1 Navigate to Administrative Tools and run the IIS Manager.

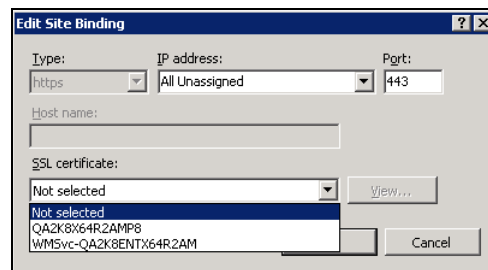
- Expand the computer node and the Web Sites folder. You should see a Default Web Site item, as depicted in the following illustration.



- In the Actions panel on the right side, under Edit Site, click **Bindings**.
- If the *Site Bindings* dialog contains an entry for https, select it and click **Edit**. Otherwise, click **Add** and select https from the **Type** list.

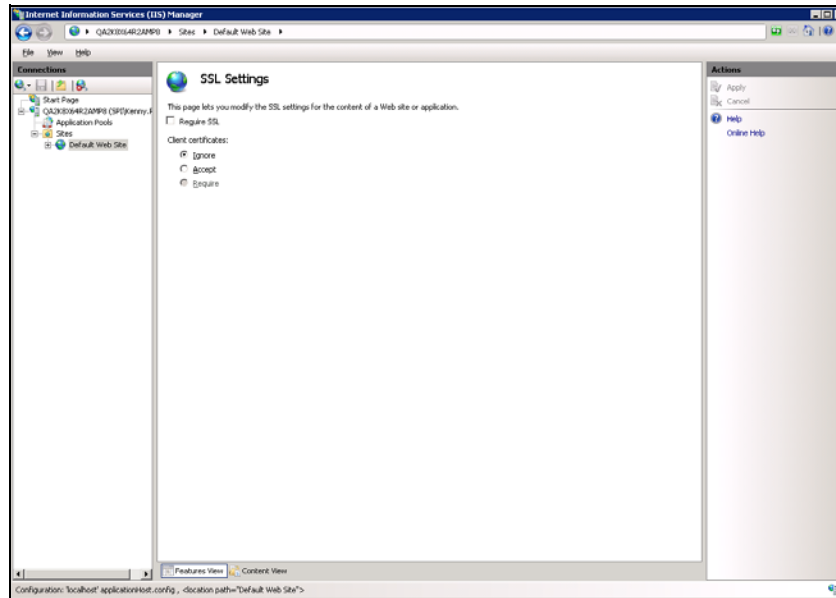


- You should see the certificate that was generated by the WebInspect Enterprise Initialize program in the **SSL Certificate** list.



- Select the certificate and click **OK**.
- Close the *Site Bindings* dialog.
- On the IIS Manager window, double-click the SSL Settings icon (under the IIS group).

- 9 On the Features view, select **Require SSL** and click **Apply** (in the Action panel).



WebInspect Enterprise Manager Data Path Customization

By default, the WebInspect Enterprise Manager uses the All Users profile path as the SmartUpdate download, sensor upload, and WebInspect Enterprise Manager logging repository. Some installations may have limited space on the boot partition, which will require the redirection of these files and folders. Changes need to be made to both the Web.config file and the Web.logging.config file to move both the logging and repository folders. The instructions for modifying each file are detailed below.

Modifying the Web.config File (Moving the Storage Folders)

The Web.config file for WebInspect Enterprise is located in the following directory:

```
\\Program Files\HP\HP WebInspect Enterprise 10.00\ManagerWS
```

To change the data paths used by the WebInspect Enterprise Manager, add the following lines inside the <appSettings> element in the Web.config file.

```
<add key="Manager.TempPath" value="D:\WIEData\temp" />  
<add key="Manager.BaseDataPath" value="D:\WIEData" />
```

Note: Instead of using the Manager.BaseDataPath key, you could add the following five lines, which affords greater granularity.

```
<add key="Manager.ScanUploadsPath" value="D:\WIEData\ScanUploads" />  
<add key="Manager.ScanImportPath" value="D:\WIEData\ScanImports" />  
<add key="Manager.SensorUploadsPath" value="D:\WIEData\SensorUploads" />  
<add key="SmartUpdate.ProductsFilePath" value="D:\WIEData\SmartUpdatePatches" />  
<add key="Manager.PimCachePath" value="D:\WIEData\PimCache" />
```

If you don't want to change all of the paths, then you can comment out the appropriate lines.

Modifying the Web.logging.config File (Moving Logging Locations)

The log files are controlled by the Web.logging.config file. The configuration specifies an “appender” that is used to write the log entries to a file, and each appender has properties such as the log file path.

The default appender configuration uses the following settings:

```
<appender name="RollingFile"
type="SPI.Diagnostics.Logging.Appender.AppDataRollingFileAppender">
  <file value="HP\WIE\Manager\ManagerWS_trace.log">
  <appDataLocation value="AllUsers"/>
  ...
</appender>
```

This defines a log file where the path is relative to the “Documents and Settings\All Users\Application Data” directory if running Windows 2003 and the “\ProgramData\” directory if running Windows 2008. This works because the appender type is set to AppDataRollingFileAppender. If you want to change the configuration to use an absolute path for the log file, you must change the appender type to RollingFileAppender and replace the relative path with the absolute path. The appDataLocation setting will no longer be needed, so you can comment it out or delete it. The updated config section should look something like this:

```
<appender name="RollingFile" type="SPI.Diagnostics.Logging.Appender.RollingFileAppender">
  <file value="D:\WIEData\logs\ManagerWS_trace.log">
  ...
</appender>
```

This same change can be made to the WebInspect Enterprise Scheduler Service and the WebInspect Enterprise Task Service logging configuration files.

- For the WebInspect Enterprise Scheduler Service, edit the AmpScheduler.exe.logging.config file in the following directory: \Program Files\HP\HP WebInspect Enterprise 10.00\Scheduler.
- For the WebInspect Enterprise Task Service, edit the TaskService.exe.logging.config file in the following directory: \Program Files\HP\HP WebInspect Enterprise 10.00\TaskService.

Encrypting the Communication between WebInspect Enterprise and SQL 2005

Some customers may require the communication between the WebInspect Enterprise Web Service and the SQL Server to be encrypted. Standard Microsoft instructions for enabling SSL communication between these two components are available on the internet. The instructions are focused on configuring the WebInspect Enterprise web service to use the enabled SSL encryption after the Windows configuration is complete.

The steps below detail how to configure WebInspect Enterprise to use SSL encryption AFTER configuring a certificate on the SQL Server machine AND configuring the WebInspect Enterprise manager (SQL Client) to use the encryption. Details on setting up this configuration can be found in the following kb from Microsoft:

“How to enable SSL encryption for an instance of SQL Server by using Microsoft Management Console” - <http://support.microsoft.com/default.aspx/kb/316898>

Enabling WebInspect Enterprise to Use SSL

The instructions below detail how to modify the web.config file to use encrypted communication (SSL) after you have configured both machines as detailed in the Microsoft KB 316898 article.

After configuring the encryption on SQL 2005 and configuring the WebInspect Enterprise manager to use the encryption, you additionally need to modify the web.config file for the WebInspect Enterprise web service to utilize the encryption. The connection string is encrypted by default, which requires the steps below to decrypt the sting, perform the necessary modifications, and then re-encrypt the string in the web.config file. Also, if you rerun WebInspect Enterprise Initialize, then you will need to redo this process, or keep a backup copy of the encrypted connection string.

Editing the Encrypted SQL Connection String Section of web.config

In the IIS Manager, go to Properties on the WebInspect Enterprise virtual directory, click the ASP.NET tab, and click Edit Configuration. Append "Encrypt=Yes" to the end of the connection string. This will handle decrypting and encrypting the connection string.

Note: This is not applicable to Windows Server 2008.

Encrypt Connection String in the TaskService.exe.config File after Modifying the web.config File

- 1 Stop the WebInspect Enterprise Task Service. At a command line, enter "net stop "WebInspect Enterprise 10.00 Task Service.""
- 2 Locate the connectionStrings element in the Web.config file see below. Copy the data inside the "<CipherValue>...</CipherValue>" section and paste the data in the exact same section in the TaskService.exe.config file.

```
<connectionStrings configProtectionProvider="DataProtectionConfigurationProvider">
  <EncryptedData>
    <CipherData>
      <CipherValue>M5KyPhzm+=</CipherValue>
    </CipherData>
  </EncryptedData>
</connectionStrings>
```

- 3 Restart the WebInspect Enterprise Task Service. At a command line, enter "net start "WebInspect Enterprise 10.00 Task Service.""

WebInspect Enterprise Sensor Installation

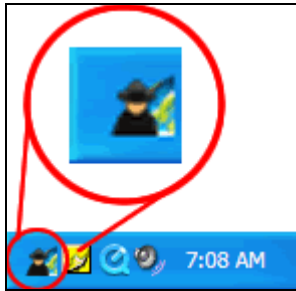
The user installing the WebInspect Enterprise Sensor must be a local administrator on the Sensor machine. The installation package for the WebInspect Enterprise Sensor is contained within the WebInspect installation. A WebInspect Enterprise Sensor is a subset of the WebInspect package that does not require a WebInspect license for activation. All the license information for WebInspect Enterprise Sensors is contained in the WebInspect Enterprise License.

During the installation of WebInspect, a screen allows you to configure the package as a WebInspect Enterprise Sensor. The best practice is to bypass setting up the Sensor at this screen and perform the Sensor configuration via the HP ASC Monitor after the installation wizard is complete. There are two reasons for this:

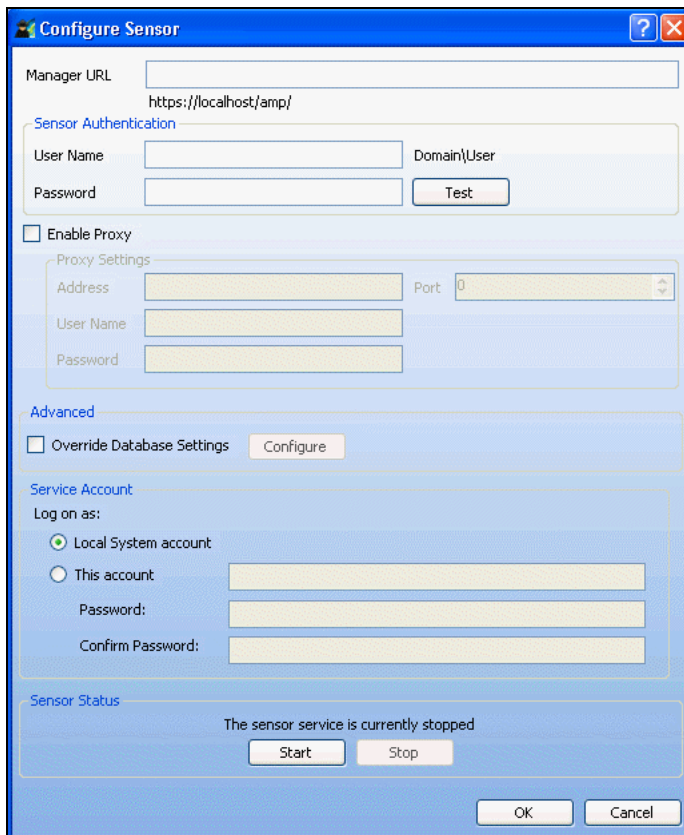
- The ASC Monitor Sensor configuration allows the user to test the Sensor username/password credentials prior to starting the service.
- The ASC Monitor Sensor configuration allows the user to specify Sensor connectivity to a remote SQL Server.

Configuration of the WebInspect Enterprise Sensor is performed via the HP ASC Monitor program. This should be launched automatically and resides in the task tray. You can manually launch it via the Start menu for HP WebInspect.

Right-click the HP Application Security Center icon in the task tray and select **Configure Sensor**.



As shown below, the *Configure Sensor* window includes the ability to test the Sensor authentication credentials and configure a remote SQL Server (**Override Scan Settings Connectivity** option).



WebInspect Enterprise Sensor Remote SQL Server Standard Edition Connectivity

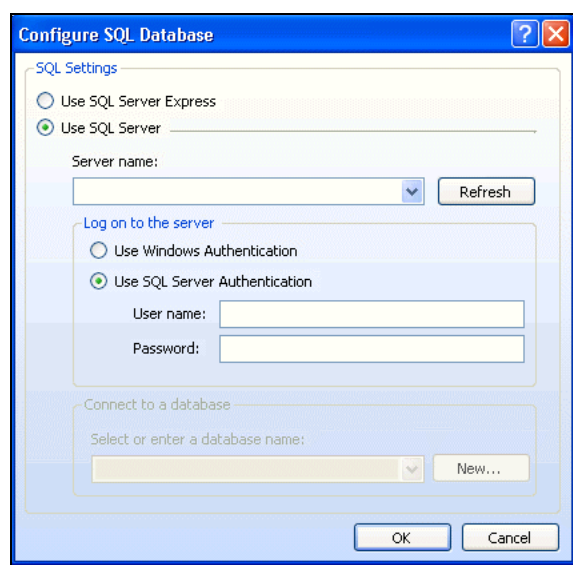
When configuring the WebInspect Enterprise sensor to write to a remote SQL Server Standard Edition instead of a local SQL Server Express Edition, observe the following considerations:

- The database for the Sensor must be created via the Sensor configuration. The user logged into the Sensor machine must have at least temporary rights to create a database on the SQL Server.
- The WebInspect Enterprise Sensor Service on the Sensor machine must use an account that can access the remote SQL database. This account needs read/write access to the SQL database created for the Sensor. By default, this service runs as the local system, which will not have access to a remote database if you choose Windows Authentication when configuring the database connection information. To use Windows Authentication, you must change how the service logs on. To do so, use the following procedure.
 - 1 Right-click the HP Application Security Center icon in the task tray and select **Configure Sensor**.
 - 2 On the *Configure Sensor* window, under Service Account - Log on as, select **This account**.
 - 3 Enter a user name in the box next to **This account**.
 - 4 Enter the account's password in the **Password** and **Confirm Password** boxes.
 - 5 Click **Start**.

In the example below, the information for the remote SQL database is as follows:

- SQL Server name: sqlcluster
- SQL Instance name: wie
- SQL Server listening port: 2325
- WebInspect Enterprise Sensor database: wiesensor01

The wiesensor01 database has been previously created using the New button shown in the illustration. The user performing this action must have rights to create a database on this SQL server (or instance) or an equivalent SQL Server authentication account.



WebInspect Enterprise Sensor Logging

The WebInspect Enterprise Sensor log is in the following locations:

On Windows XP and Windows Server 2003:

```
\Documents and Settings\All Users\Application Data\HP\HP WebInspect\Amp\logs
```

On Windows Server 2008:

```
\ProgramData\HP\HP WebInspect\Amp\logs\
```

The file is named AMPSensorWI_trace.log. The name can be changed in AmpSensorWI.exe.logging.config.

WebInspect Enterprise Sensor Scan Logs

Information regarding the scans performed by the WebInspect Enterprise sensor can be found in the same directory as above, with the scan GUID as the folder name for each particular scan.

WebInspect Enterprise Sensor Directory Path Customization

By default, the WebInspect Enterprise Sensor uses the All Users profile path as the update download and sensor scan upload repository. Some installations may have small boot partitions that require the redirection of these repository folders. Changes need to be made to the SharedSettings.config file in the WebInspect folder to redirect the WebInspect Enterprise data path. This will modify all of the paths for the WebInspect Enterprise sensor, including both scan logs and scan data (if set to keep a local copy).

Keep in mind that this does not modify the locations for WebInspect data files. The WebInspect path settings are configured using the WebInspect interface.

Modifying the SharedSettings.config File

- 1 Stop the WebInspect Enterprise Sensor Service.
- 2 Edit the SharedSettings.config file in the following directory:
On Windows XP and Windows Server 2003:

```
\Documents and Settings\All Users\Application Data\HP\HP WebInspect
```


On Windows Server 2008:

```
\ProgramData\HP\HP WebInspect
```
- 3 Change the “AmpDirectory” value to point to the new location as shown below:

```
</setting>  
<setting name="AmpDirectory" serializeAs="String">  
<value>D:\Put_new_path_here</value>  
</setting>
```
- 4 Save the file and restart the WebInspect Enterprise Sensor Service.

Retaining Copies of Scan Data on the WebInspect Enterprise Sensor

By default, the WebInspect Enterprise sensor deletes all locally stored scan data after the data has been uploaded to WebInspect Enterprise. If customers want to keep a copy of the scan data on the sensor, use the following procedure.

- 1 Create a file named AmpSensorWI.user.config in the following directory:

C:\Program Files\HP\HP WebInspect Enterprise 10.00

The file should contain the following:

```
<?xml version="1.0" encoding="utf-8"?>
```

```
<appSettings>
```

```
<add key="KeepAllScanFiles" value="true"/>
```

OR

```
<add key="KeepFailedScanFiles" value="true"/> [Note: Scans with a status of "failed."]
```

```
</appSettings>
```

- 2 Save the file and restart the WebInspect Enterprise Sensor Service.

Scans run by the WebInspect Enterprise Sensor will store a local copy on the sensor machine, as well as uploading the data to the WebInspect Enterprise database.

General Database Settings for WebInspect Enterprise (SQL Server 2005)

The options for the database can be found by right-clicking the database and using the Properties menu. Some considerations for the WebInspect Enterprise database are listed below:

- Database files and transaction log files should be stored on different disks or partitions for better performance.
- The size of the database file should be set to the largest amount available on the system. Setting this value low and then allowing the database option to auto-grow the file will decrease performance once the size limit is reached. Some DBAs suggest turning off the auto-grow option and monitoring the file size, increasing the size of the database as it becomes larger. The logic is that once a database is full, and it starts to auto-grow, it will most likely do so during periods when the database is being used, which will cause system performance to degrade.
- If the database is performing poorly, turning off the auto-update statistics option may increase performance, as it may be running continuously on databases that are incurring large amounts of activity. If you turn off this option, you should run the Update Statistics Maintenance Task.

Database Maintenance for WebInspect Enterprise (SQL Server 2005)

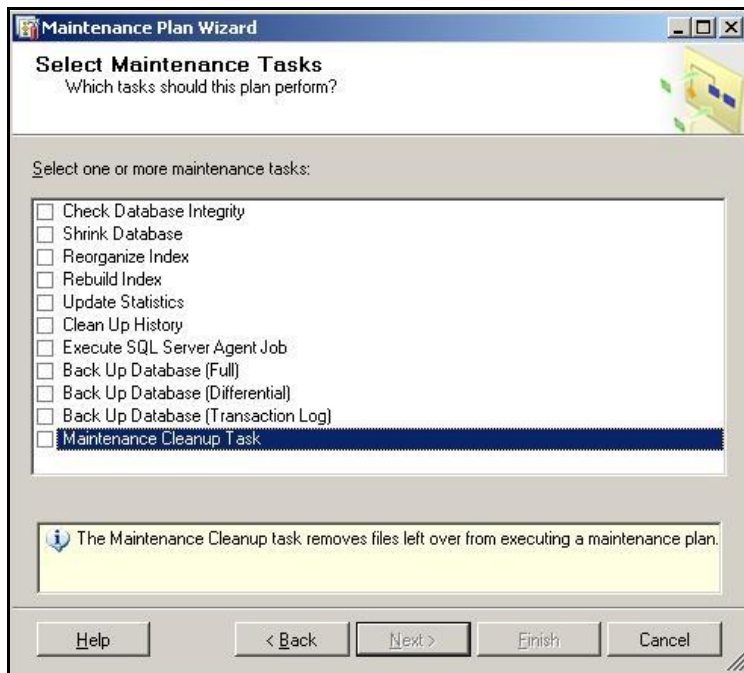
The descriptions included in this document cover only the most important maintenance tasks associated with database performance issues and are intended for customers that do not have a DBA on staff.

Note: With tasks that have multiple options, the recommended setting for the WebInspect Enterprise database is noted by the WebInspect Enterprise Recommended Options.

In SQL Server 2005, the Maintenance Plan Wizard guides you through a series of steps that request several bits of information for a complete plan that are saved as a SQL Server Integration Services package. This plan is executed by the SQL Server Agent Service. This service must be running in order for the Maintenance Plan to initiate.

The steps are listed in a logical order of progression for the tasks to be performed. Each option important for the WebInspect Enterprise database is listed following the general description of each maintenance task. Keep in mind that these are general suggestions for customers that do not have a DBA resource on staff.

The Maintenance Plan Wizard is located in the SQL Management Studio under **Management** → **Maintenance**. Multiple maintenance plans can be created and run on different schedules. It is generally recommended to run separate maintenance plans for the system databases (master, model, msdb) and user databases (the WebInspect Enterprise database).



WebInspect Enterprise Recommended Options

The maintenance plan should be scheduled to run during a non-peak time. It can be run daily, weekly, or monthly at the customer's discretion. Each should be configured to write the results to a common log directory and should be reviewed frequently to monitor the health of the database.

Check Database Integrity Task

The Check Database Integrity task checks the allocation and structural integrity of all the objects in the specified database. The task can check a single database or multiple databases, and you can choose whether to also check the database indexes.

Note: You can repair errors with the DBCC CHECKDB Transact-SQL command. Using a repair option with this command requires the database to be in single-user mode, which will take the database and WebInspect Enterprise application offline.

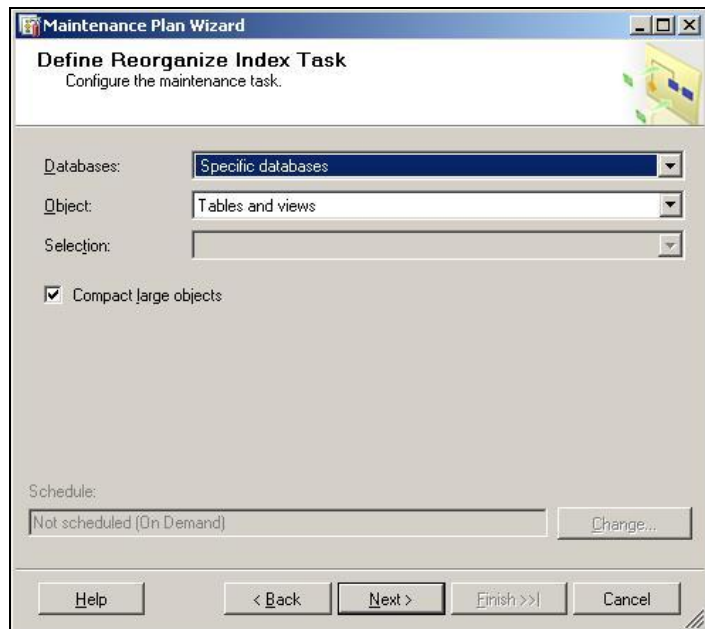
Database Fragmentation Maintenance

The following maintenance tasks can all be encompassed under the subject of fragmentation bullets (Reorganize Index, Rebuild Index, Update Statistics).

The SQL Server 2005 Database Engine automatically maintains indexes whenever insert, update, or delete operations are made to the underlying data. Over time, these modifications can cause the information in the index to become scattered in the database (fragmented). Fragmentation exists when indexes have pages in which the logical ordering, based on the key value, does not match the physical ordering inside the data file. Heavily fragmented indexes can degrade query performance and cause the application to respond slowly.

Reorganize Index

The Reorganize Index task reorganizes indexes in SQL Server database tables and views. Use the *Reorganize Index Task* dialog to move index pages into a more efficient search order. Having the pages in order improves index-scanning performance.

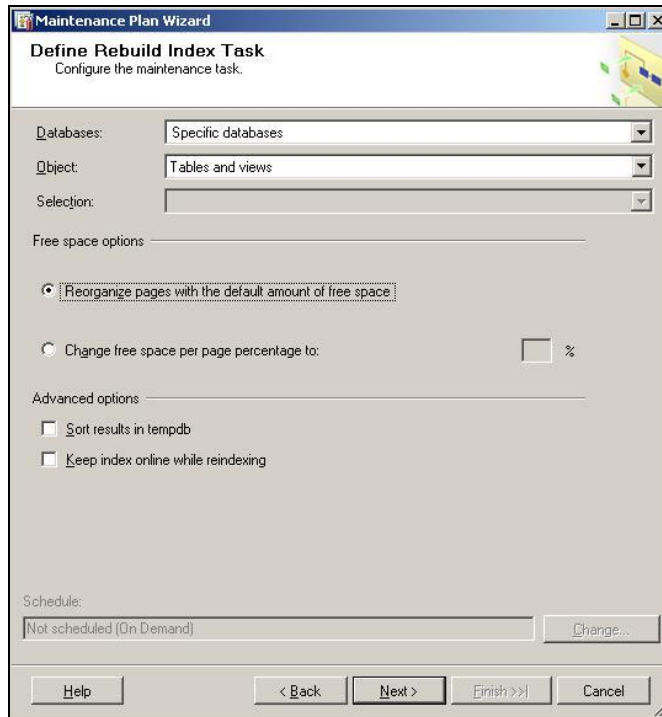


WebInspect Enterprise Recommended Options

Select **Tables and views** and **Compact large objects**.

Rebuild Index

The Rebuild Index task rebuilds indexes in SQL Server database tables and views. Rebuilding an index drops the index and creates a new one. In doing this, fragmentation is removed, disk space is reclaimed by compacting the pages using the specified or existing fill factor setting, and the index rows are reordered in contiguous pages (allocating new pages as needed). This can improve disk performance by reducing the number of page reads required to obtain the requested data.

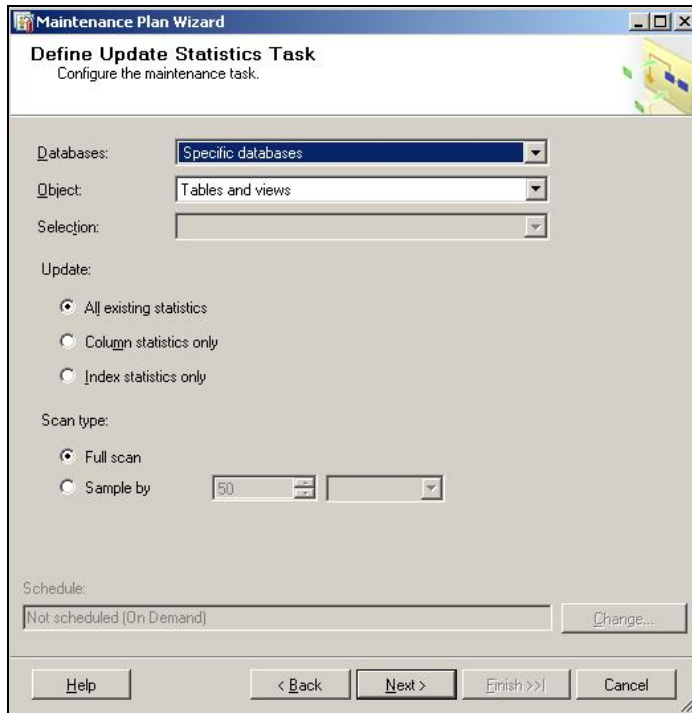


WebInspect Enterprise Recommended Options

Select **Tables and views** and **Reorganize pages with the default amount of free space**.

Update Statistics Task

The Update Statistics task updates information about the distribution of key values for one or more statistics groups (collections) in the specified table or indexed view. SQL Server 2005 allows for statistical information to be created regarding the distribution of values in a column. The query optimizer uses this statistical information to determine the optimal query plan by estimating the cost of using an index to evaluate the query.



WebInspect Enterprise Recommended Options

Select **Tables and views**, **All existing statistics**, and **Full scan**.

