

HP Asset Manager

For the Windows® and Linux® operating systems

Software Version: 9.40

Physical Data Models

Document Release Date: June 2013

Software Release Date: June 2013



Legal Notices

Warranty

The only warranties for HP products and services are set forth in the express warranty statements accompanying such products and services. Nothing herein should be construed as constituting an additional warranty. HP shall not be liable for technical or editorial errors or omissions contained herein.

The information contained herein is subject to change without notice.

Restricted Rights Legend

Confidential computer software. Valid license from HP required for possession, use or copying. Consistent with FAR 12.211 and 12.212, Commercial Computer Software, Computer Software Documentation, and Technical Data for Commercial Items are licensed to the U.S. Government under vendor's standard commercial license.

Copyright Notice

© Copyright 2002 - 2013 Hewlett-Packard Development Company, L.P.

Trademark Notices

Adobe™ is a trademark of Adobe Systems Incorporated.

Microsoft® and Windows® are U.S. registered trademarks of Microsoft Corporation.

Documentation Updates

The title page of this document contains the following identifying information:

- Software Version number, which indicates the software version.
- Document Release Date, which changes each time the document is updated.
- Software Release Date, which indicates the release date of this version of the software.

To check for recent updates or to verify that you are using the most recent edition of a document, go to:

<http://h20230.www2.hp.com/selfsolve/manuals>

This site requires that you register for an HP Passport and sign in. To register for an HP Passport ID, go to:

<http://h20229.www2.hp.com/passport-registration.html>

Or click the **New users - please register** link on the HP Passport login page.

You will also receive updated or new editions if you subscribe to the appropriate product support service. Contact your HP sales representative for details.

Support

Visit the HP Software Support Online web site at:

<http://www.hp.com/go/hpsoftwaresupport>

This web site provides contact information and details about the products, services, and support that HP Software offers.

HP Software online support provides customer self-solve capabilities. It provides a fast and efficient way to access interactive technical support tools needed to manage your business. As a valued support customer, you can benefit by using the support web site to:

- Search for knowledge documents of interest
- Submit and track support cases and enhancement requests
- Download software patches
- Manage support contracts
- Look up HP support contacts
- Review information about available services
- Enter into discussions with other software customers
- Research and register for software training

Most of the support areas require that you register as an HP Passport user and sign in. Many also require a support contract. To register for an HP Passport ID, go to:

<http://h20229.www2.hp.com/passport-registration.html>

To find more information about access levels, go to:

http://h20230.www2.hp.com/new_access_levels.jsp

Contents

Contents	5
Chapter 1: Overview	7
Tables	8
Links	9
1-1 links	11
1-n and n-1 links	11
n-n links	11
Chapter 2: Portfolio	13
Models	14
Portfolio items	15
Assets	16
Assets linked to the procurement cycle	17
IT equipment	18
Telephones	19
Ports and connections	20
Work Orders	21
Projects	22
Stocks	23
Software Installations	24
Cost Centers	25
Chapter 3: Procurement cycle	27
Procurement cycle	28
Purchase requests	29
Orders	30
Receptions	31
Invoices	32
Assets to be returned	33
Chapter 4: Contracts	35
Contracts	36

Chapter 5: Helpdesk	37
Helpdesk	38
Chapter 6: Financials	39
Budget and expenses	39
Chargebacks	40
Taxes	41
Chapter 7: Cable and Circuit	43
Cables and cable devices	44
Color codes	45
Label rules	46
Pair/conductor types	47
Cable duties	48
Slots	49
Topologies	50
Topology groups	51
Termination-field configurations	52
Cable links	53
Chapter 8: Administration	55
Access to the database	56
Workflows	57
Chapter 9: Organization	59
Employees and Departments	60
Chapter 10: Catalog	61
Catalog	62
We appreciate your feedback!	63

Chapter 1: Overview

This guide presents diagrams that correspond to the physical data models in Asset Manager.

Each of these diagrams contains one or more tables used by the modules in Asset Manager.

Tables	8
Links	9

Tables

Each of the tables represented in this guide is identified by its SQL name.

Examples:

- The Portfolio items table uses the SQL name **amPortfolio**.
- The Assets table uses the SQL name **amAsset**.
- The Locations table uses the SQL name **amLocation**.
- The Employees and departments table uses the SQL name **amEmplDept**.

The most important tables in each diagram are shown as the largest.

Examples:

- The Assets table (**amAsset**) in the "[Assets](#)" diagram on page [16](#).
- The Cables table (**amCable**) in the "[Cables and cable devices](#)" diagram on page [44](#).
- The Taxes table (**amTax**) in the "[Taxes](#)" diagram on page [41](#).

Links

There are three types of links between tables:

- 1-1 links
- 1-n and n-1 links
- n-n links

Type of link	Graphical representation of link
1-1	—————
1-n (reverse link of of n-1)	—————< and >—————
n-n	>—————<


Each of the links represented in this guide is identified by its SQL name.

Examples:

- The link going from the Portfolio items table (**amPortfolio**) to the Employees and departments table (**amEmpIDept**) has the SQL name **User**.
- The link going from the Employees and departments table (**amEmpIDept**) to the Portfolio items table (**amPortfolio**) has the SQL name **ItemsUsed**.

Note: The SQL name of a link assumes that one of the linked tables is the source table and the other is the destination table. Thus, the **User** link between the source table (**amPortfolio**) indicates that the link points to the user record of the destination table (**amEmpIDept**). It's reverse link, though, is named **ItemsUsed**. This link points to the records of the assets used by a given user. In this case, the source table is that of Employees and departments and the destination table is that of portfolio items.

In an effort not to overload our diagrams, reverse links are not represented. The choice of a link and its reverse link is arbitrary. If you want to find out what the SQL name of a reverse link is:

1. Launch Asset Manager Application Designer.
2. Open your database description.
3. Select the table of your choice.
4. Click .
5. Select a link.
6. The SQL name of its reverse link is indicated in the **Reverse link** field.

1-1 links

This kind of link means that:

- One record in the source table is linked to one record in the destination table.

Example: The **Asset** link between the Computers table (**amComputer**) and the Assets table (**amAsset**) in the "IT equipment" diagram on page 18. This link indicates that only one computer record can be linked to only one asset record.

1-n and n-1 links

A 1-n link means that:

- One record from the source table can be linked to several records in the destination table.
- Several records in the destination table can be linked to one record in the source table.

Example: The **Rents** link between the Contracts table (**amContracts**) and the Contract rents (**amCntrRent**) table in the "Contracts" diagram on page 36. This link indicates that one contract record can be linked to several contract rent records.

A n-1 link means that:

- Several records in the source table can be linked to one record in the destination table.
- One record in the destination table can be linked to several records in the source table.

Example: The **Model** link between the Assets table (**amAsset**) and the Models table (**amModel**) in the "Models" diagram on page 14. This link indicates that several asset records can correspond to the same model record.

n-n links

This type of link means that:

- Several records in the source table can be linked to several records in the destination table.

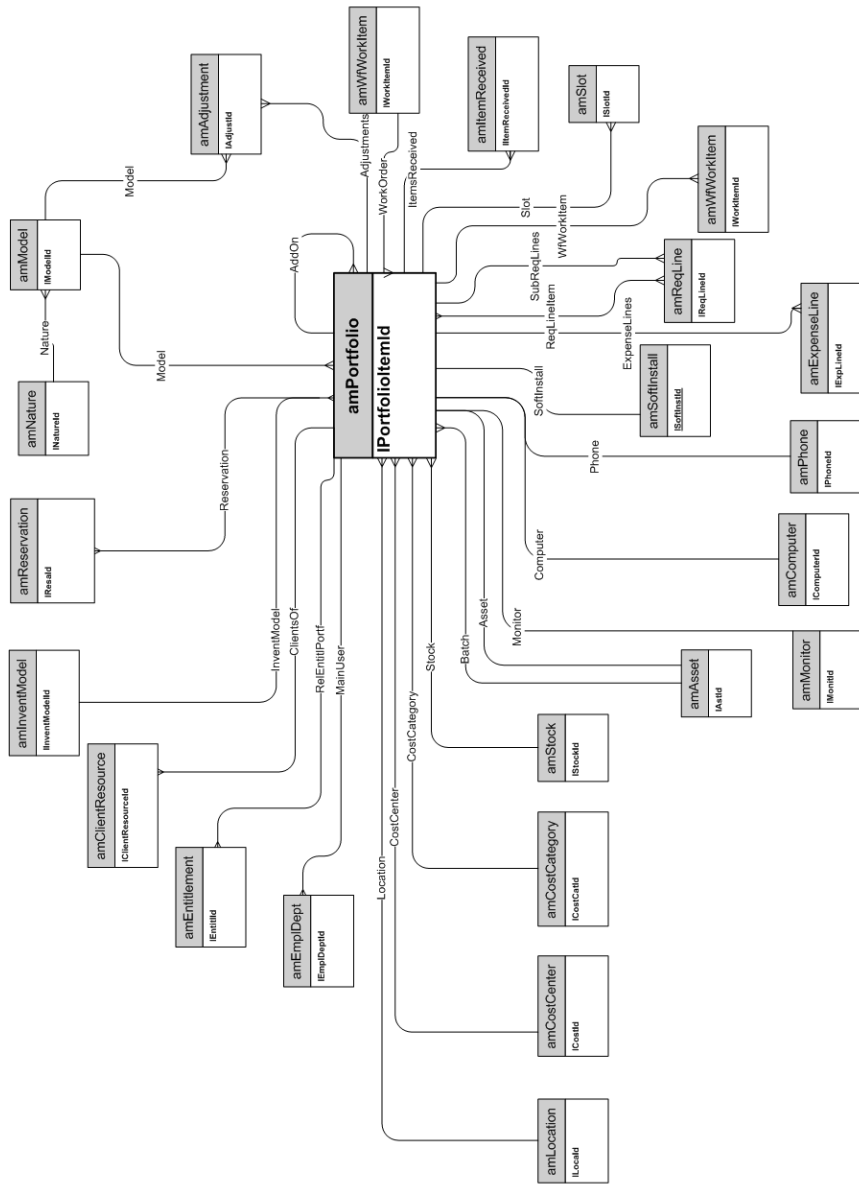
Example: The **FuncRights** link between the User profiles table (**amProfile**) and the Functional rights table (**amFuncRight**) in the [Access to the database](#) diagram on page 56. This link indicates that an asset record can be linked to several functional right records and that a functional right record can be linked to several user profile records.

Chapter 2: Portfolio

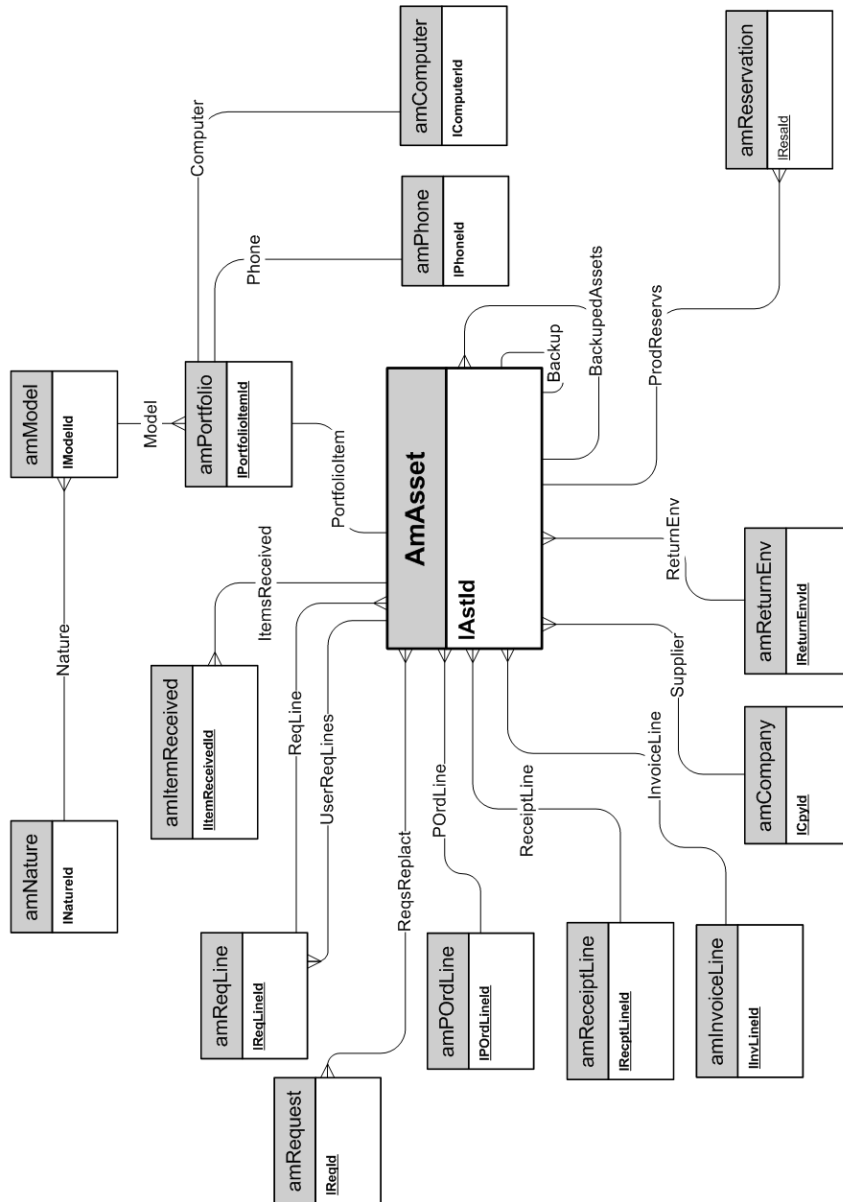
This chapter presents diagrams of the following physical data models:

Models	14
Portfolio items	15
Assets	16
Assets linked to the procurement cycle	17
IT equipment	18
Telephones	19
Ports and connections	20
Work Orders	21
Projects	22
Stocks	23
Software Installations	24
Cost Centers	25

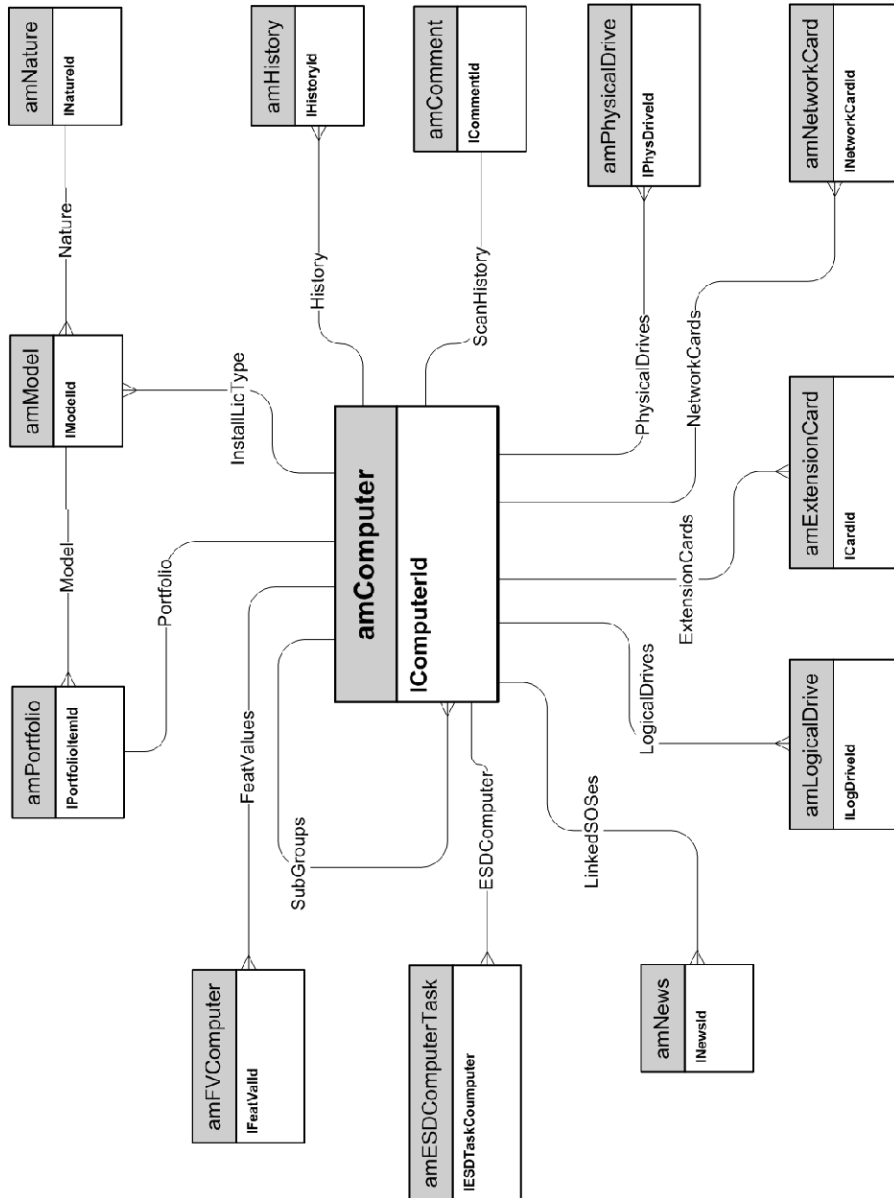
Portfolio items



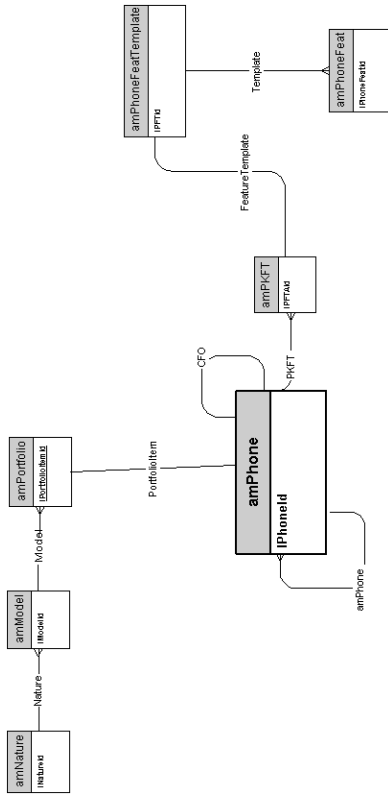
Assets linked to the procurement cycle



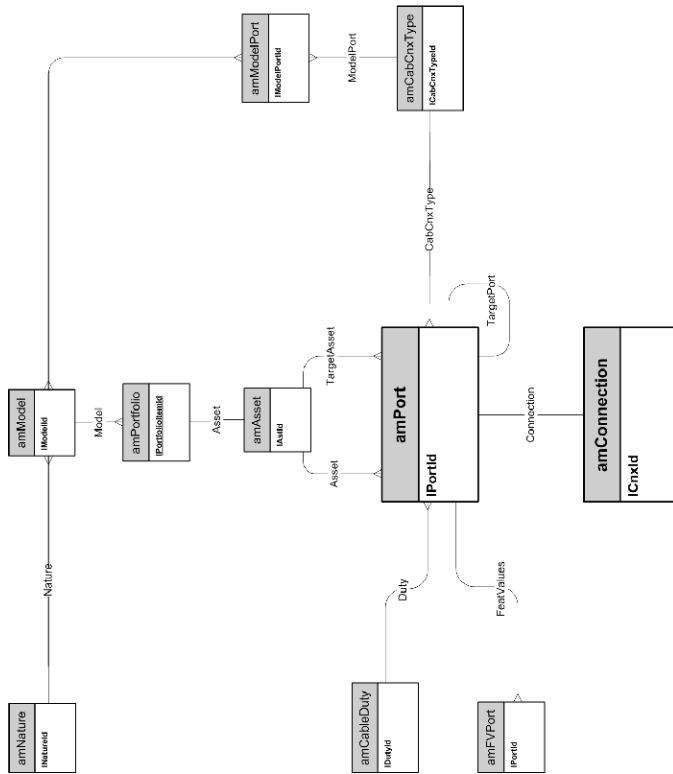
IT equipment



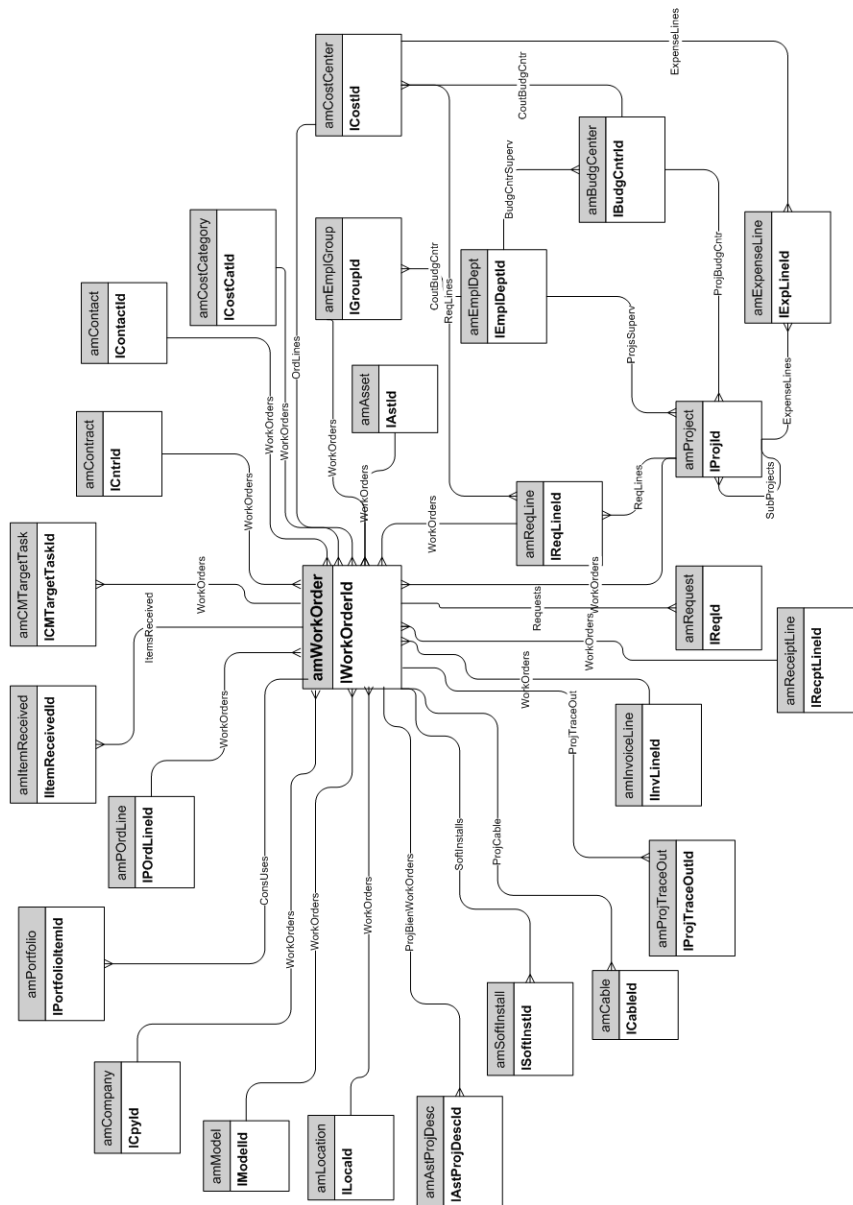
Telephones



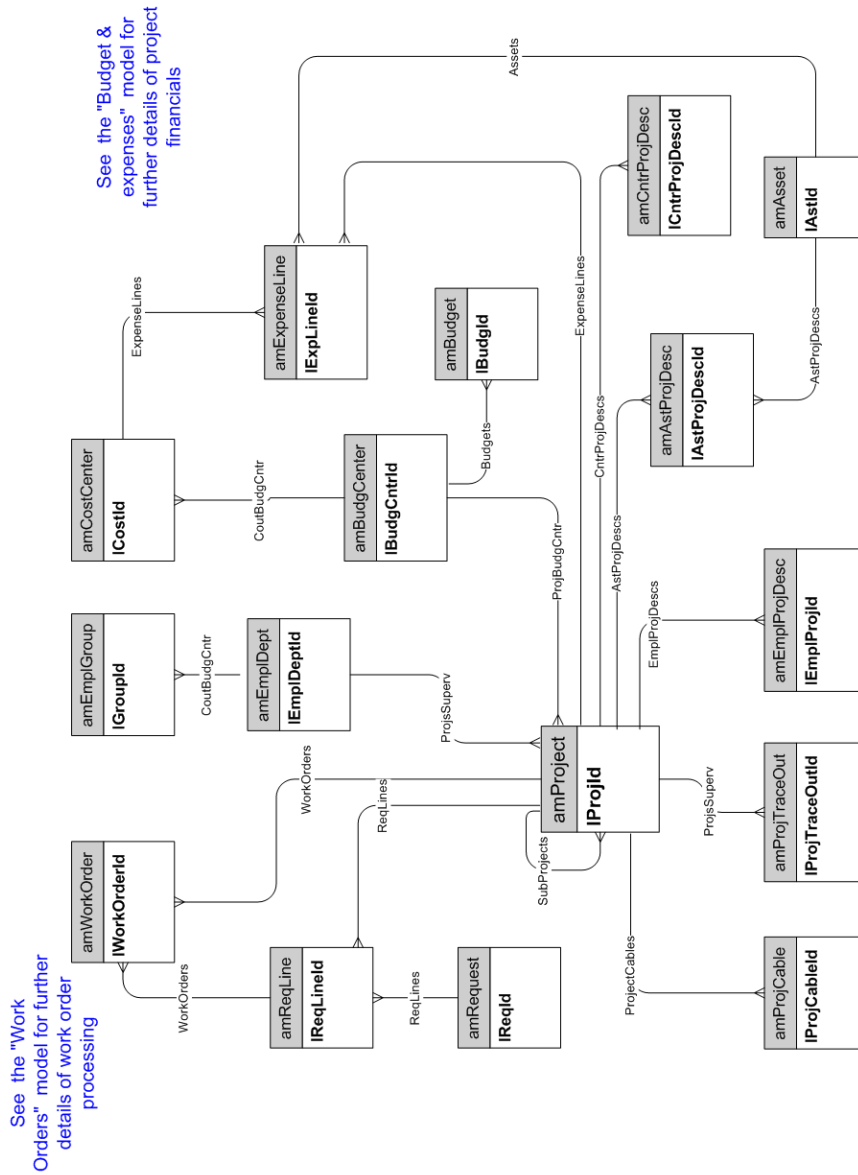
Ports and connections



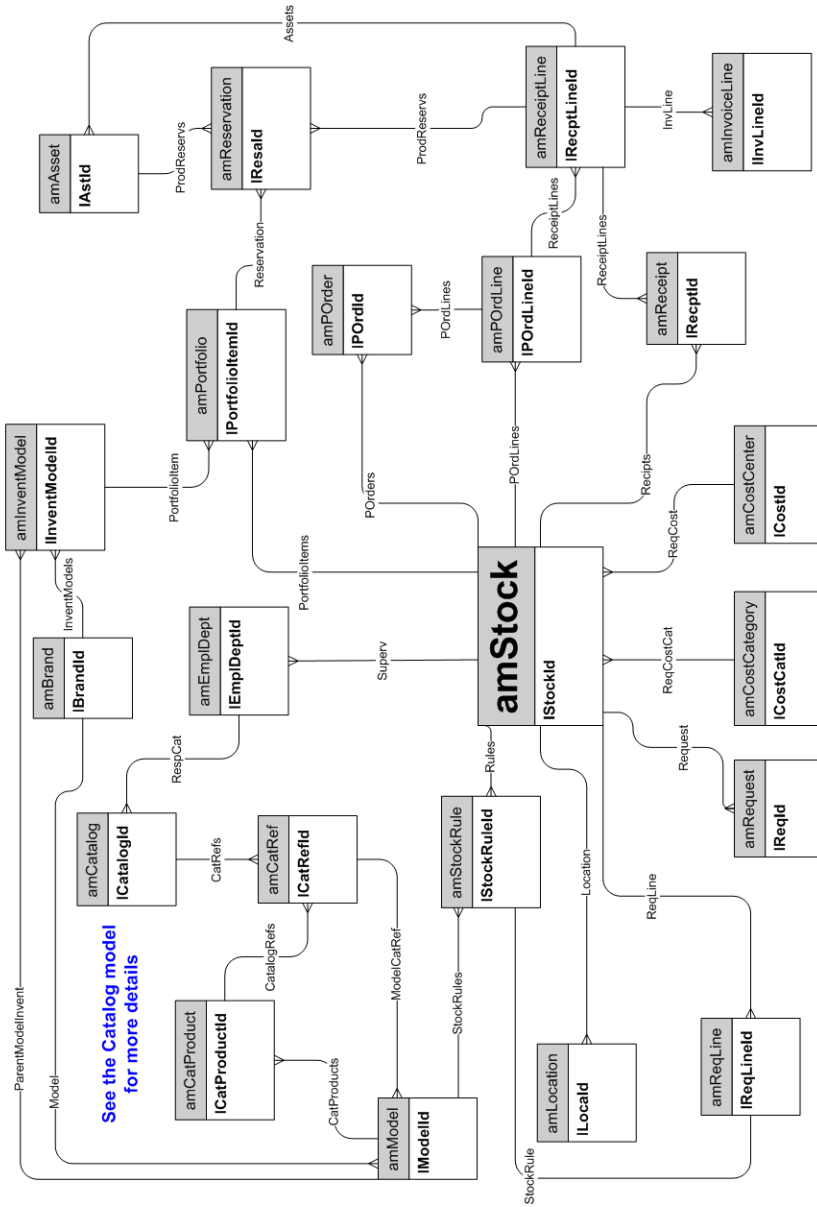
Work Orders



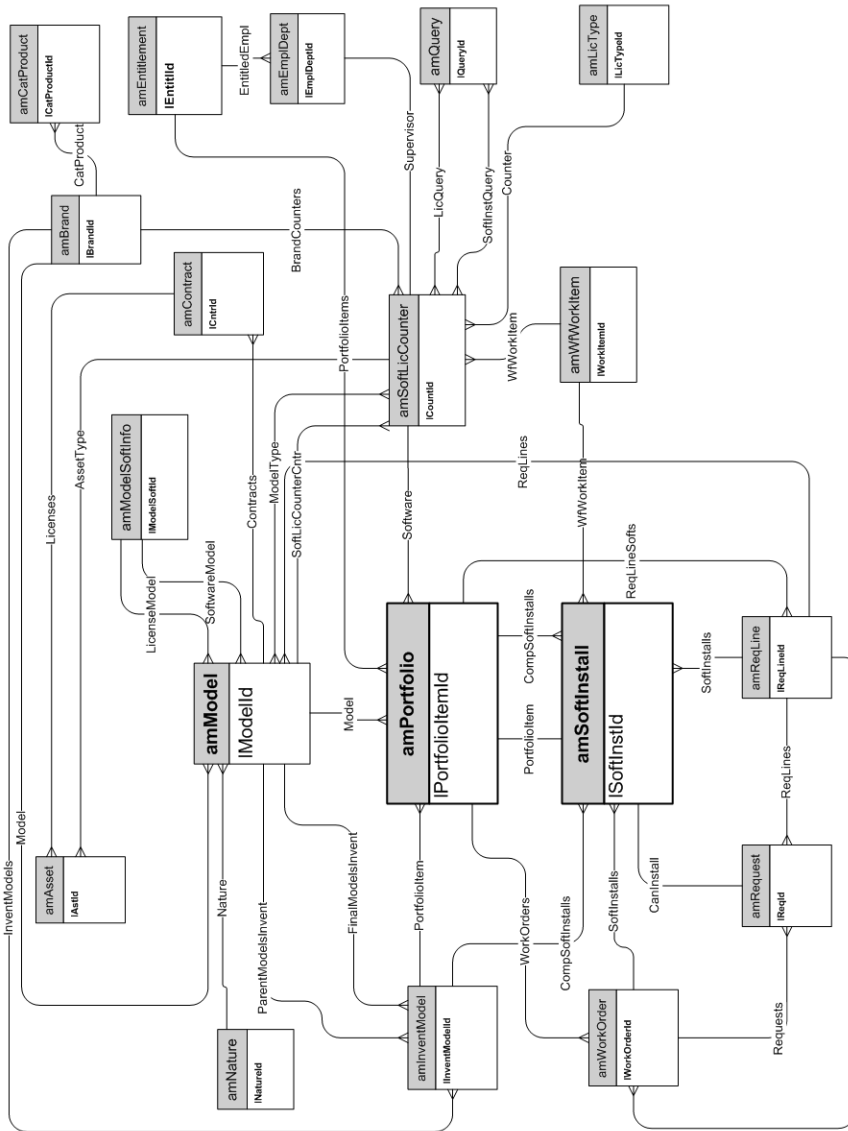
Projects



Stocks



Software Installations

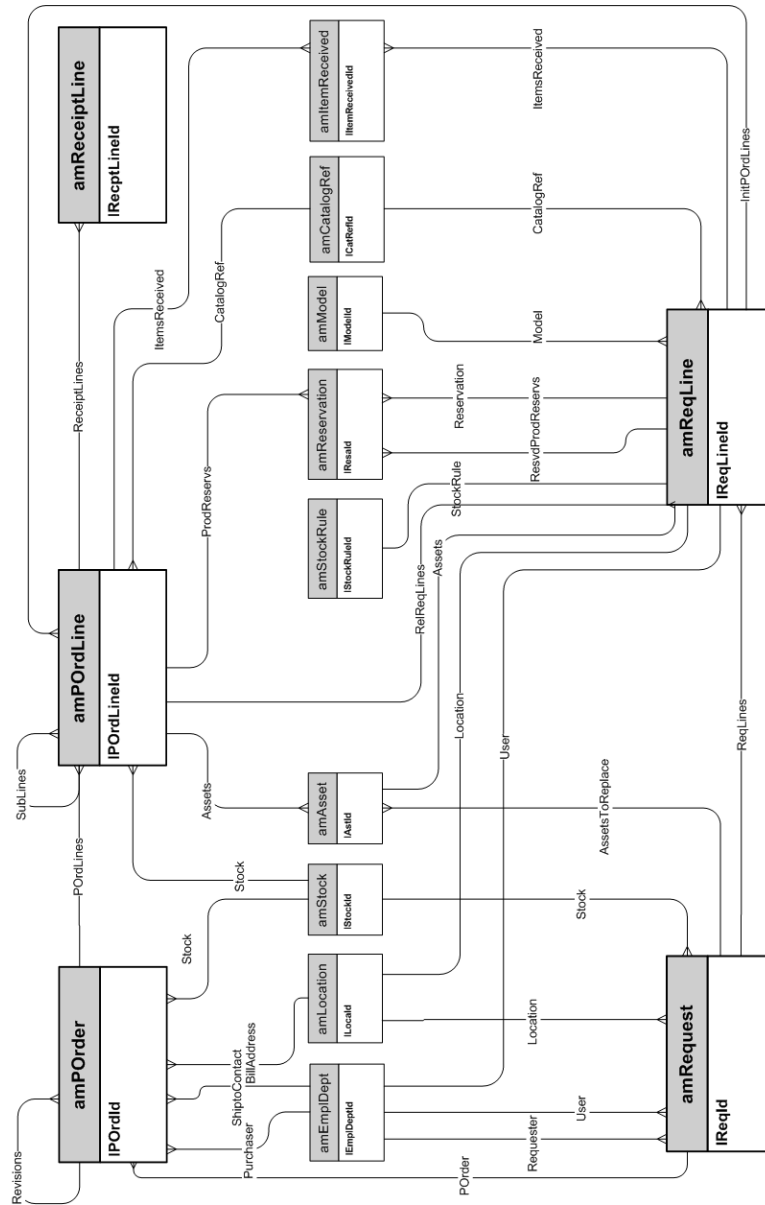


Chapter 3: Procurement cycle

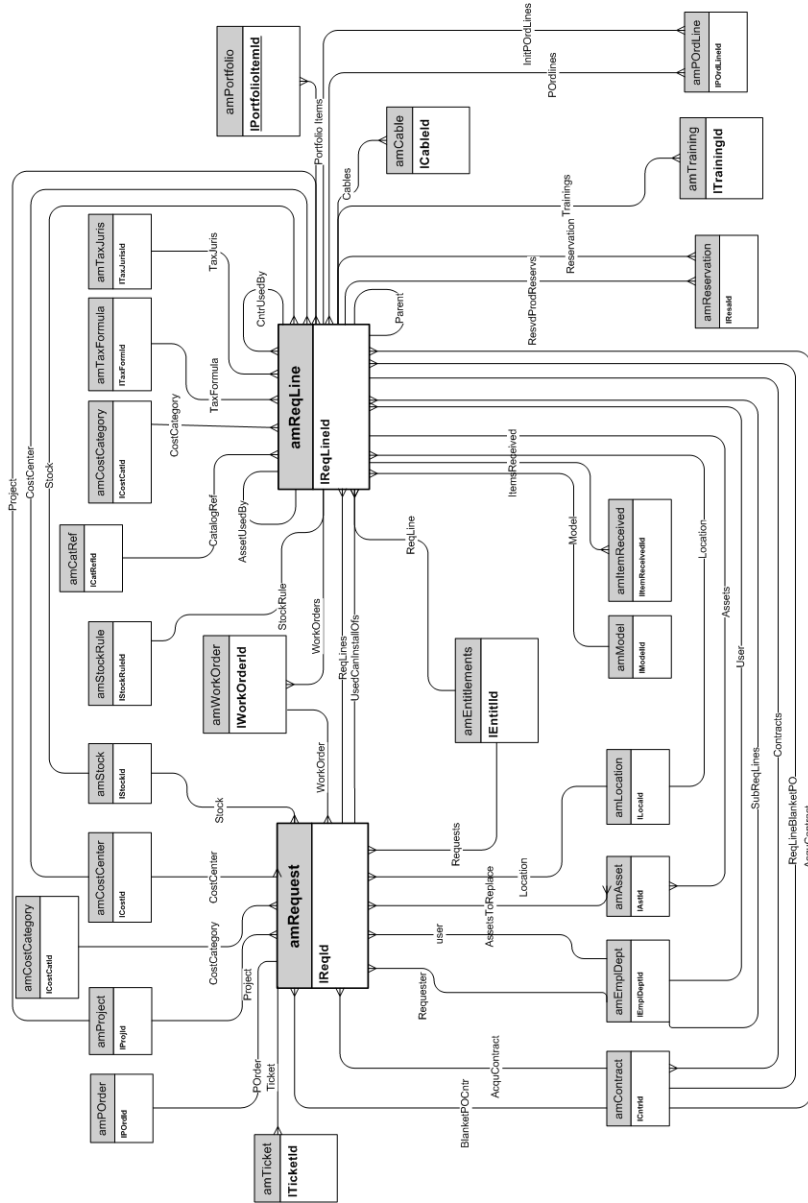
This chapter presents diagrams of the following physical data models:

Procurement cycle	28
Purchase requests	29
Orders	30
Receptions	31
Invoices	32
Assets to be returned	33

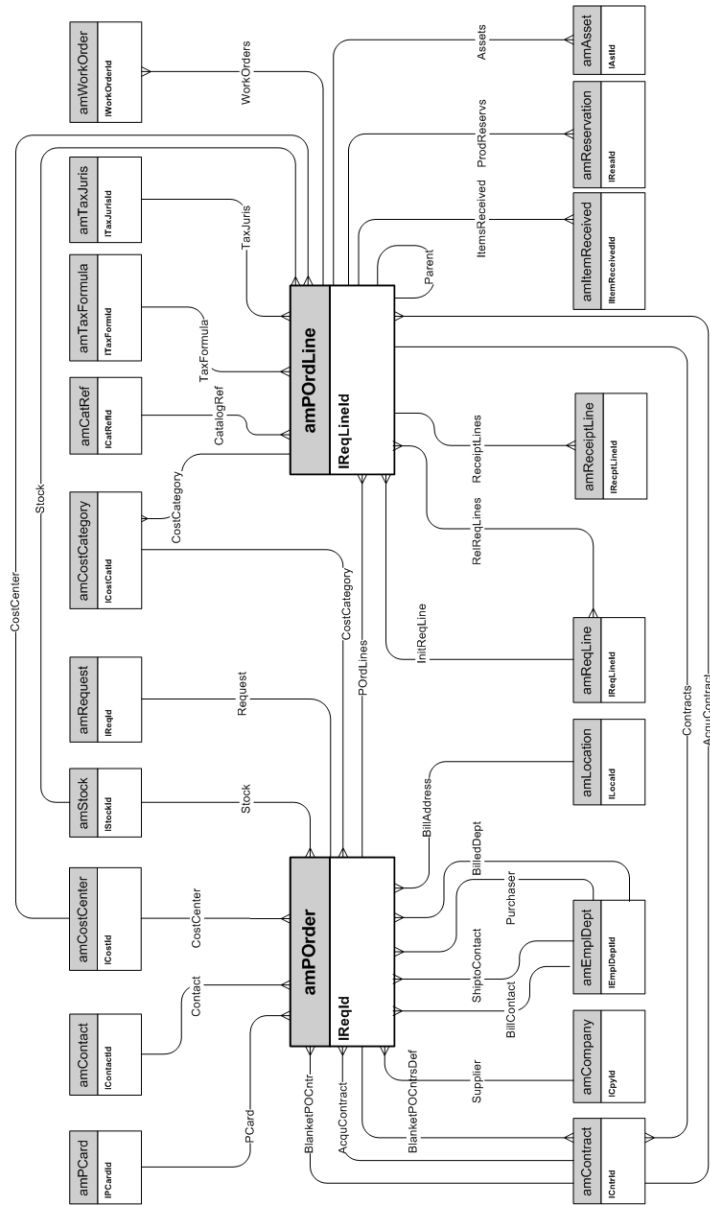
Procurement cycle



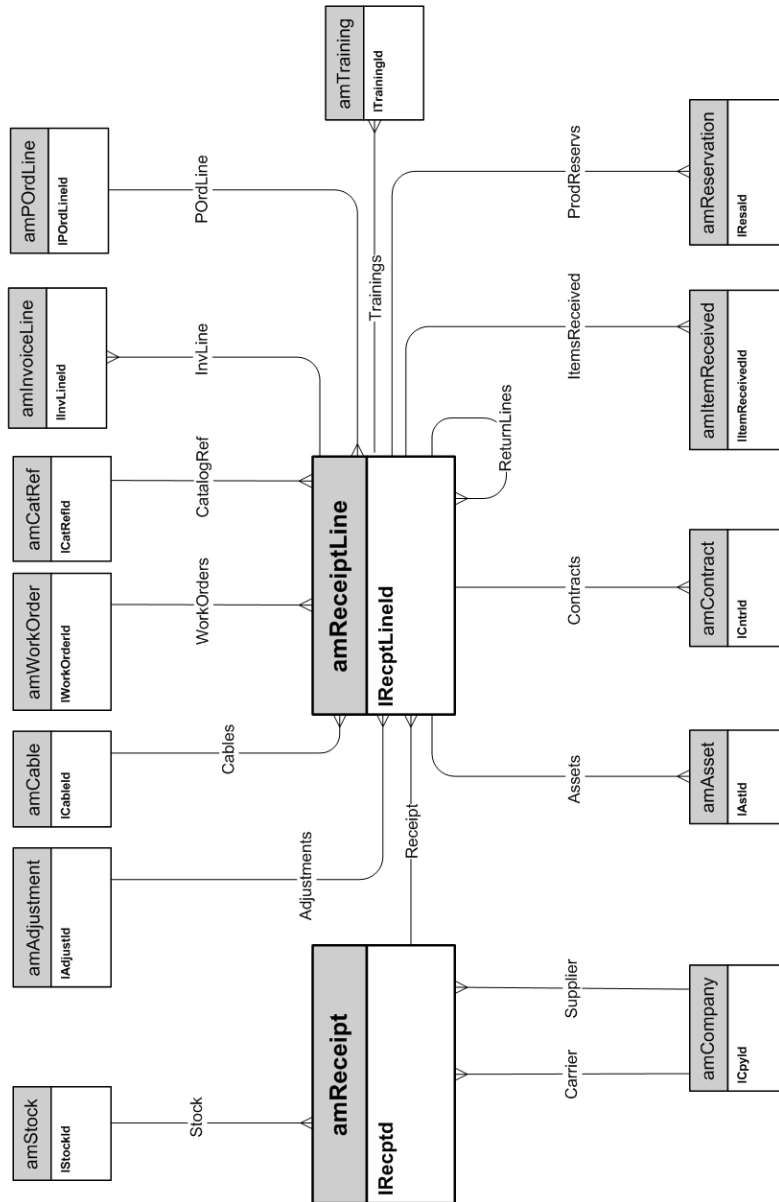
Purchase requests



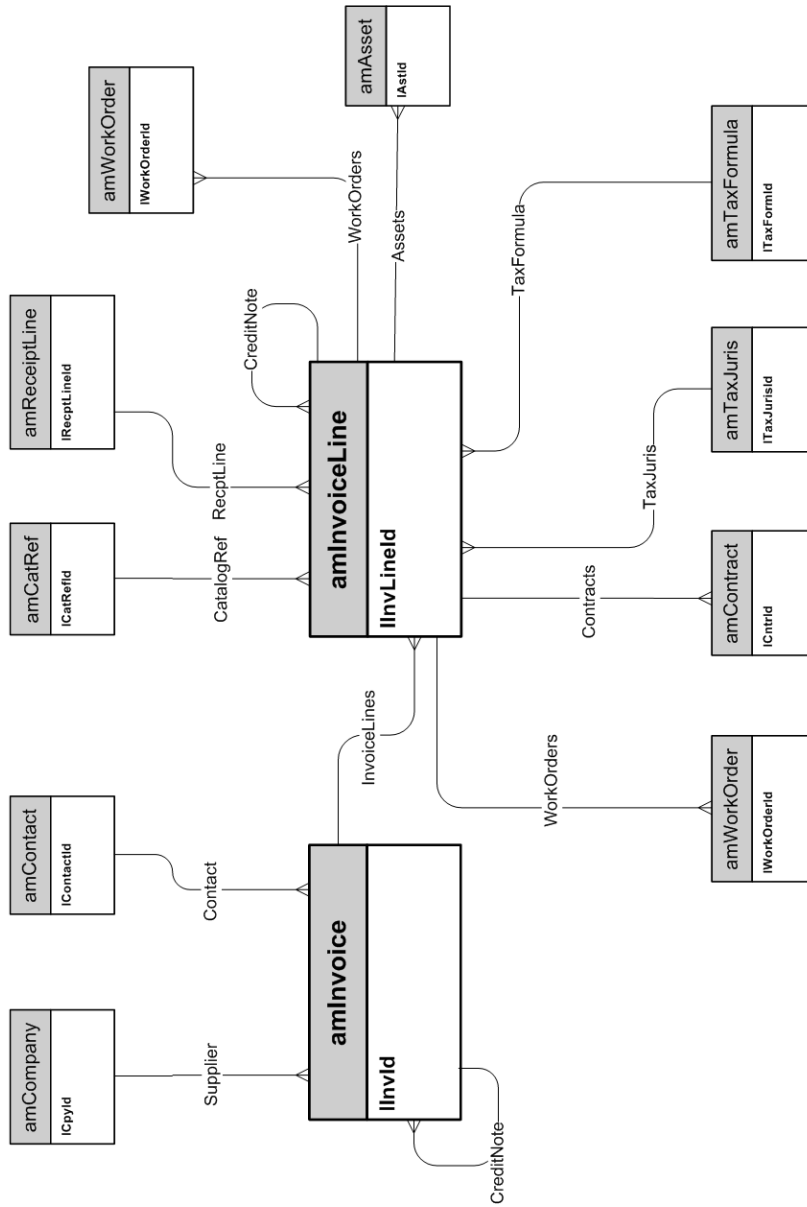
Orders



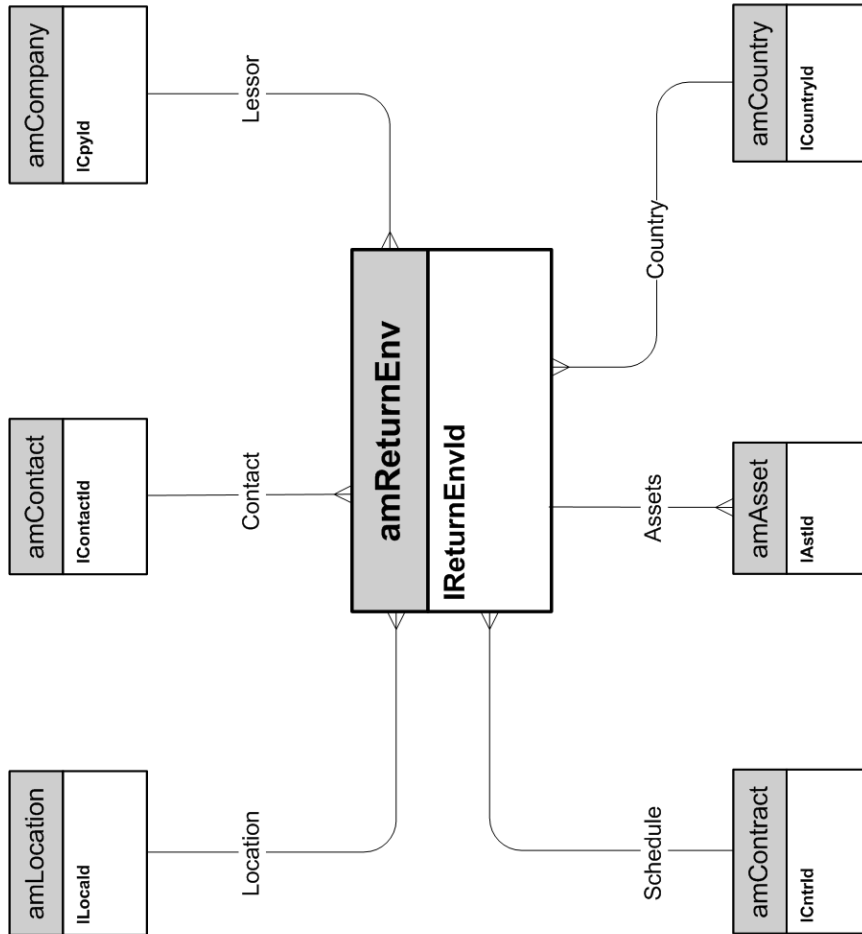
Receptions



Invoices



Assets to be returned



Chapter 4: Contracts

This chapter presents the diagram of the following physical data model:

Contracts	36
-----------------	----

Chapter 5: Helpdesk

This chapter presents the diagram of the following physical data model:

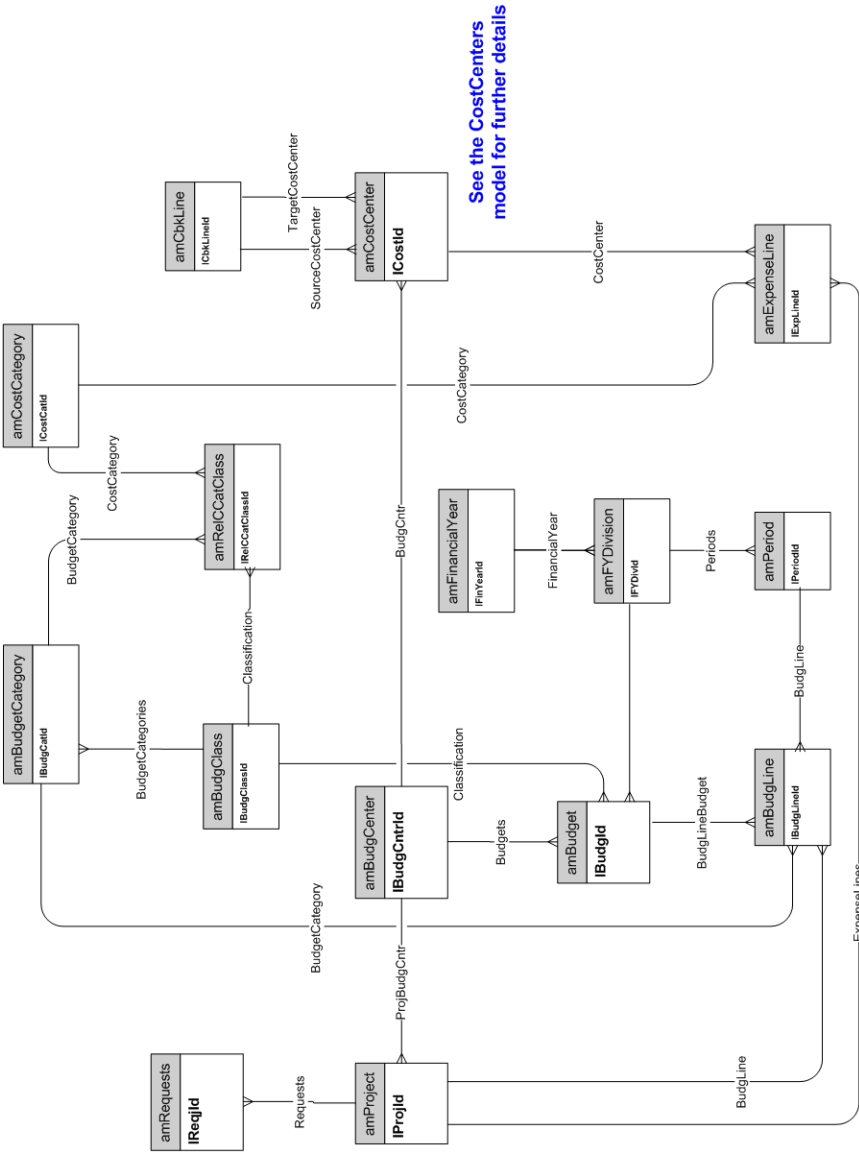
Helpdesk	38
----------------	----

Chapter 6: Financials

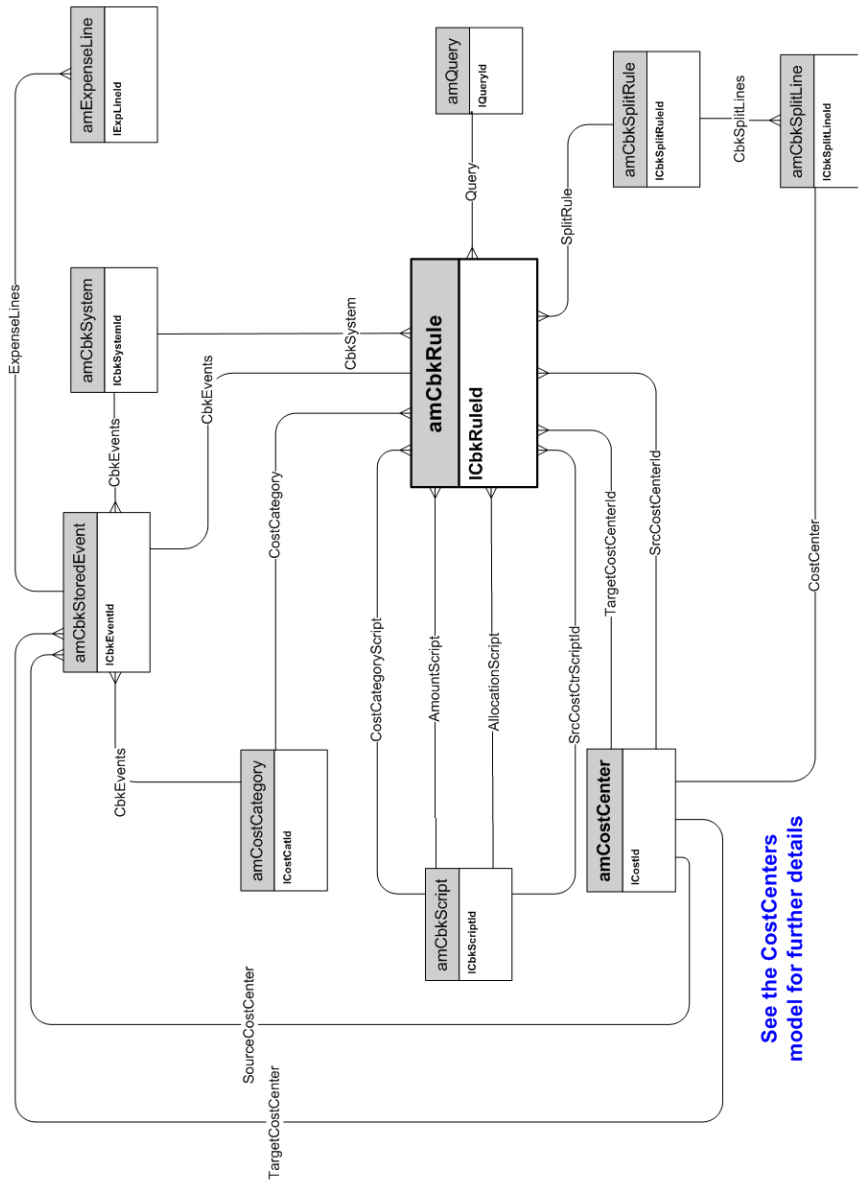
This chapter presents diagrams of the following physical data models:

- Budget and expenses 39
- Chargebacks 40
- Taxes 41

Budget and expenses

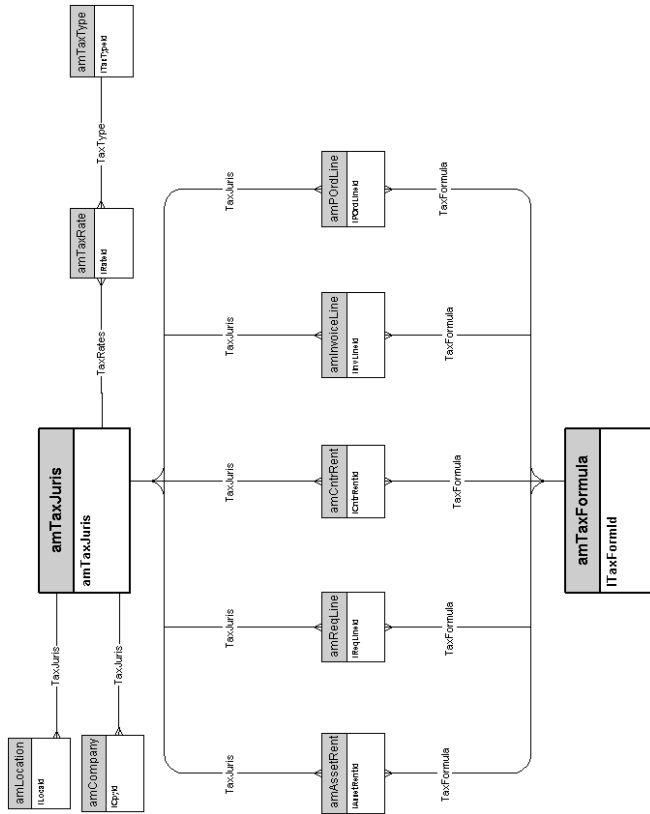


Chargebacks



See the CostCenters model for further details

Taxes

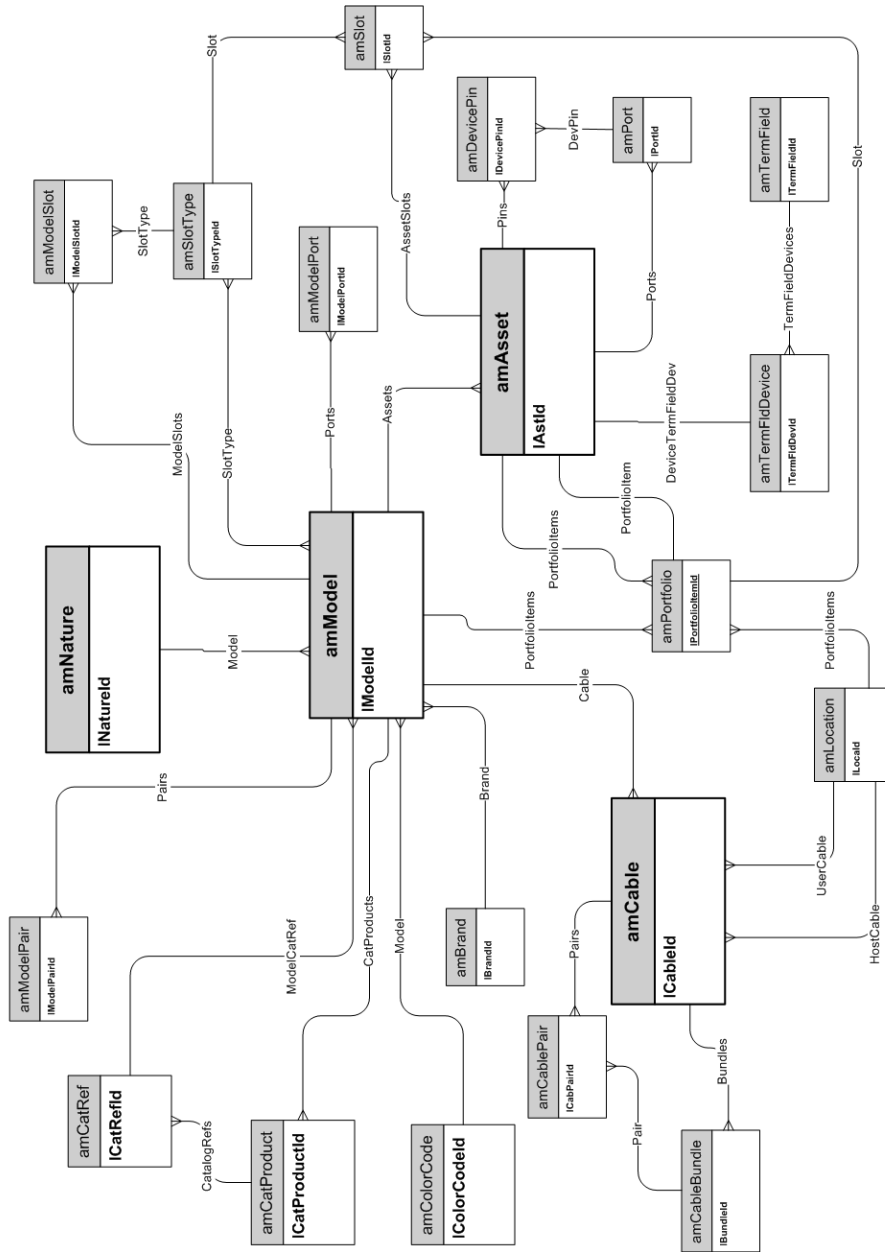


Chapter 7: Cable and Circuit

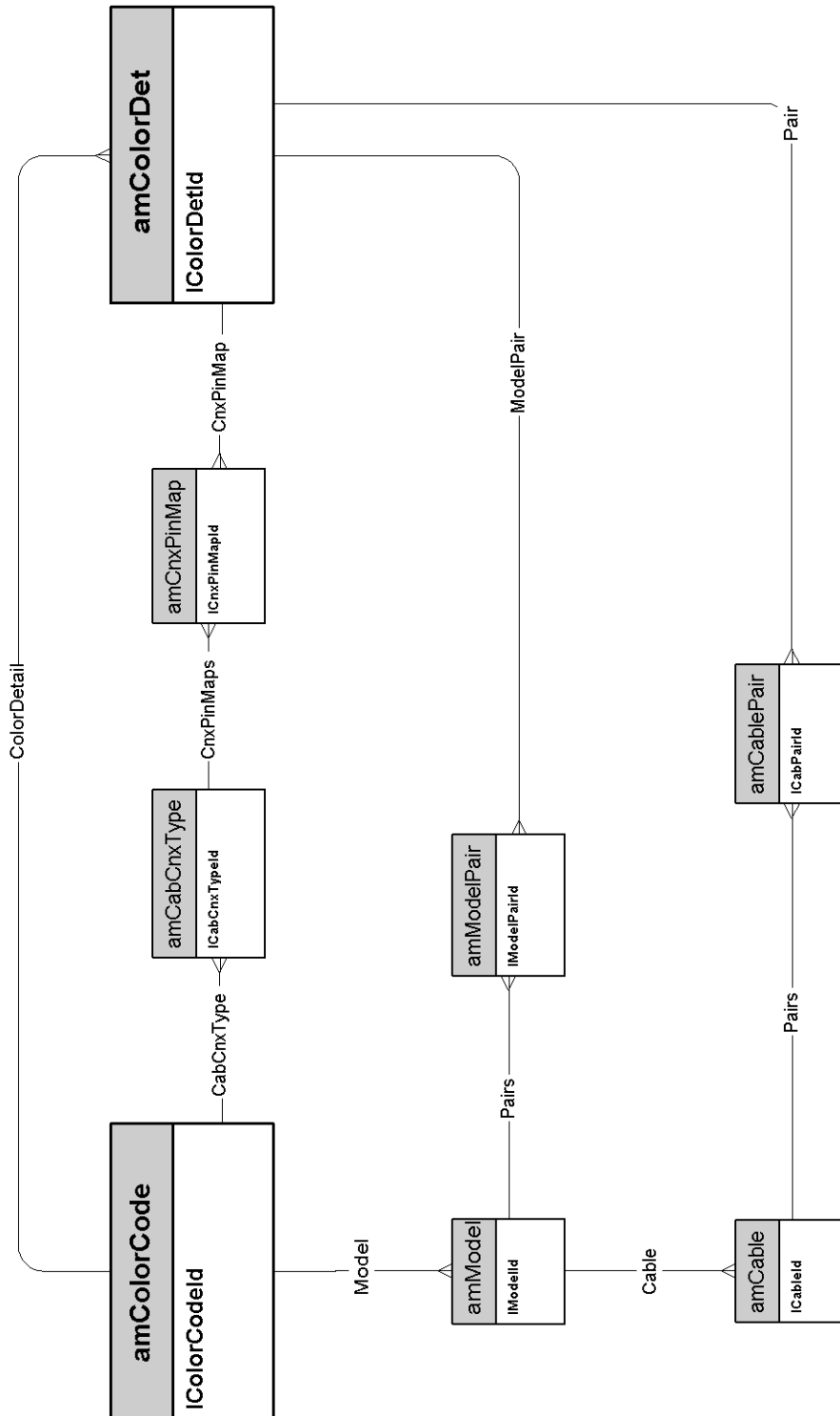
This chapter presents diagrams of the following physical data models:

Cables and cable devices	44
Color codes	45
Label rules	46
Pair/conductor types	47
Cable duties	48
Slots	49
Topologies	50
Topology groups	51
Termination-field configurations	52
Cable links	53

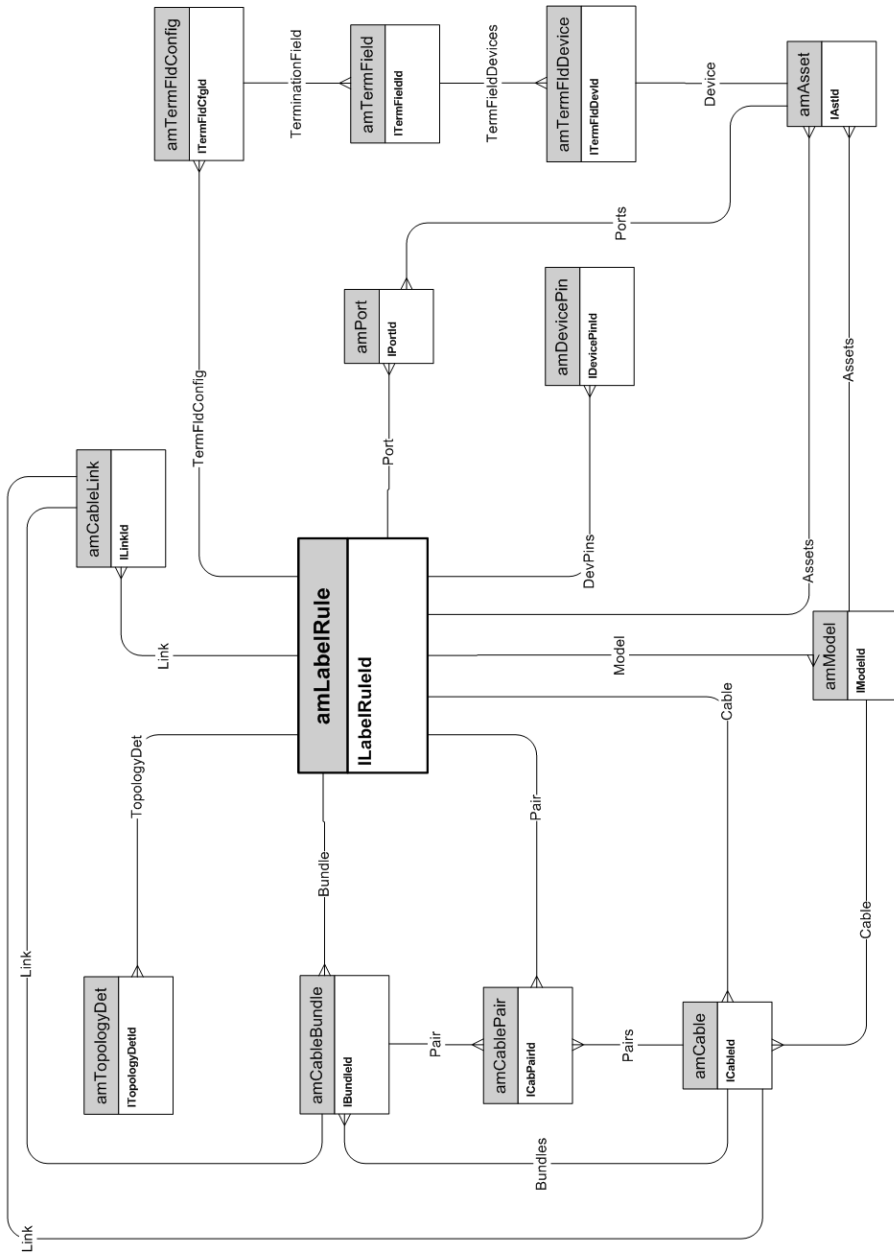
Cables and cable devices



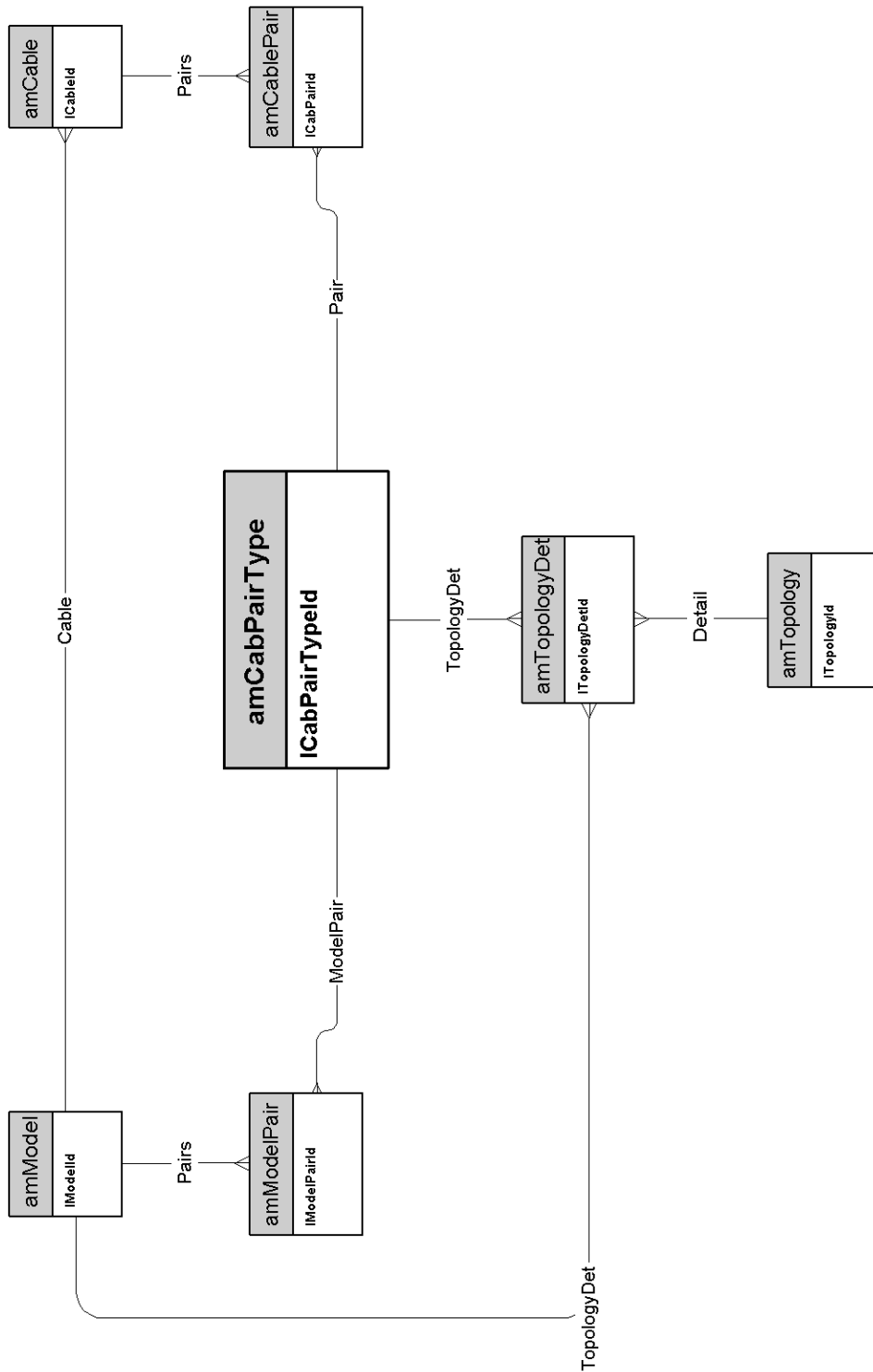
Color codes



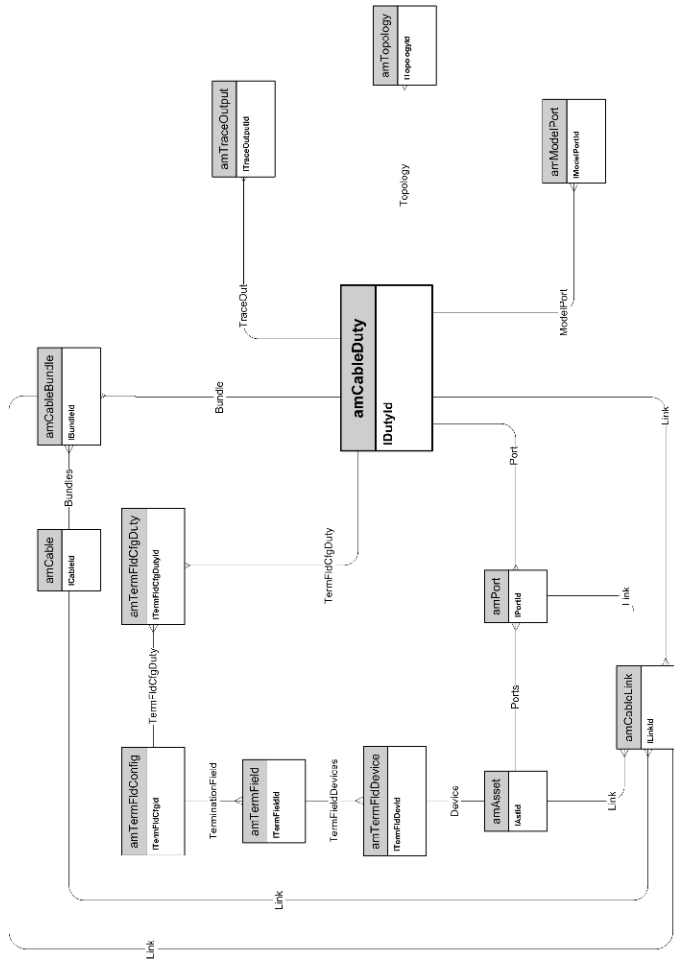
Label rules



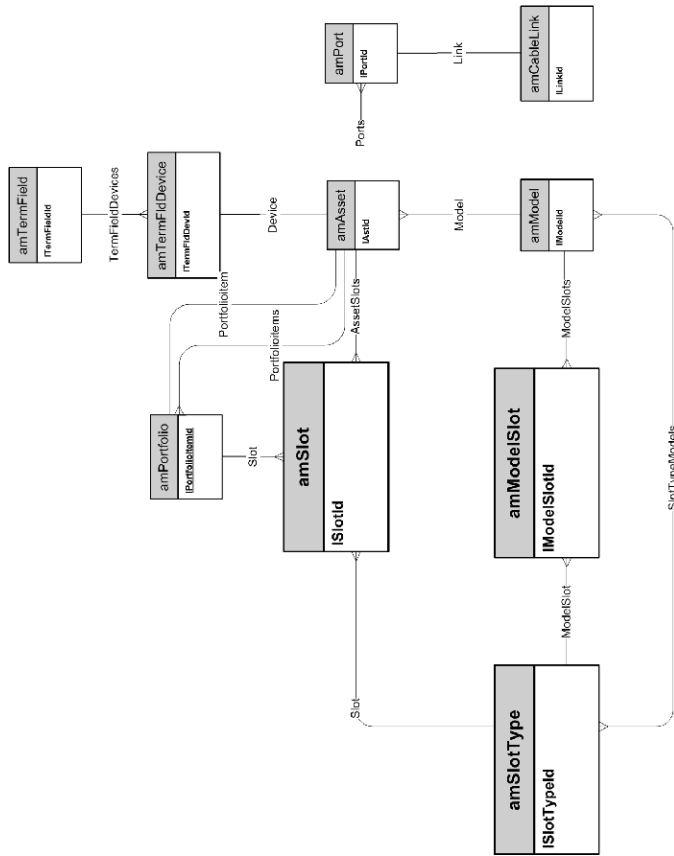
Pair/conductor types



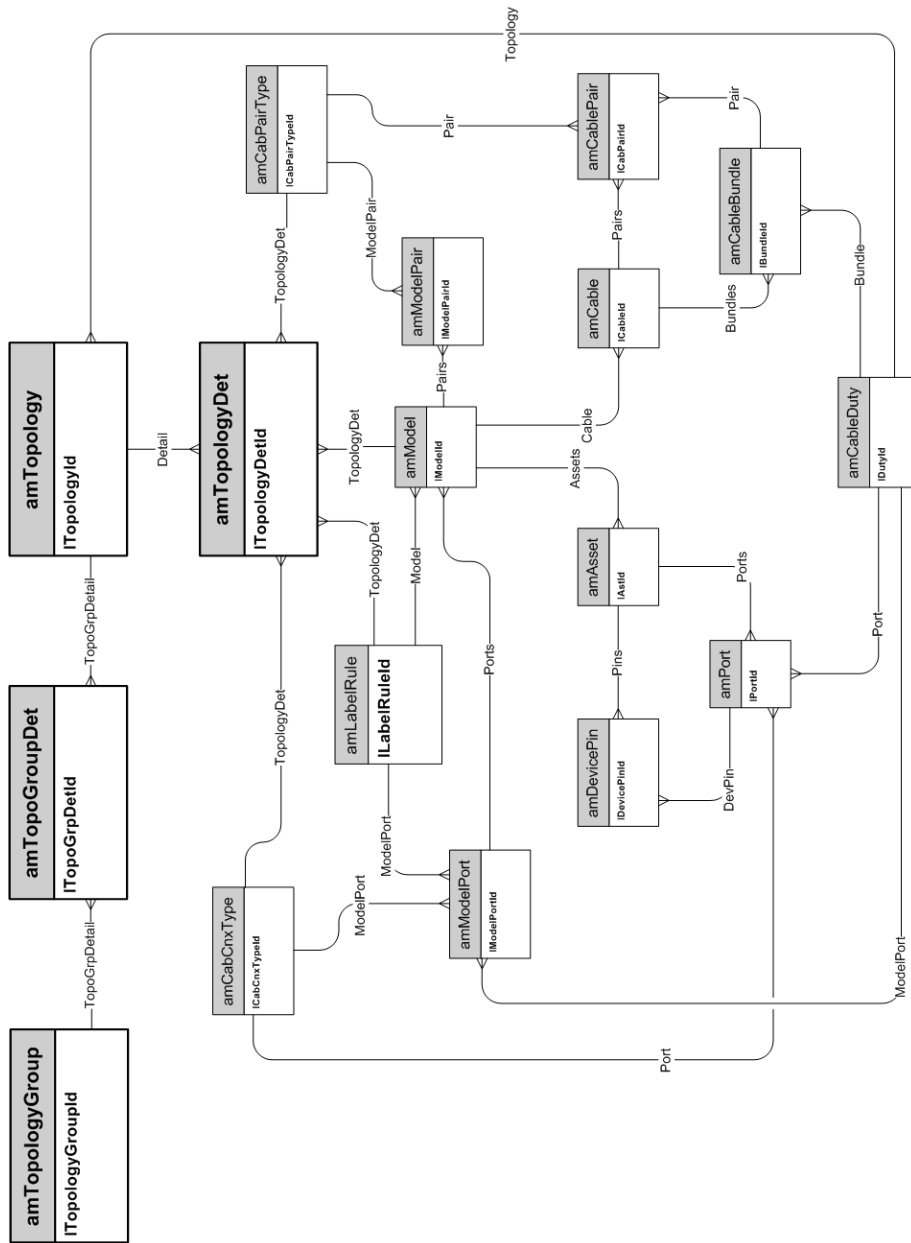
Cable duties



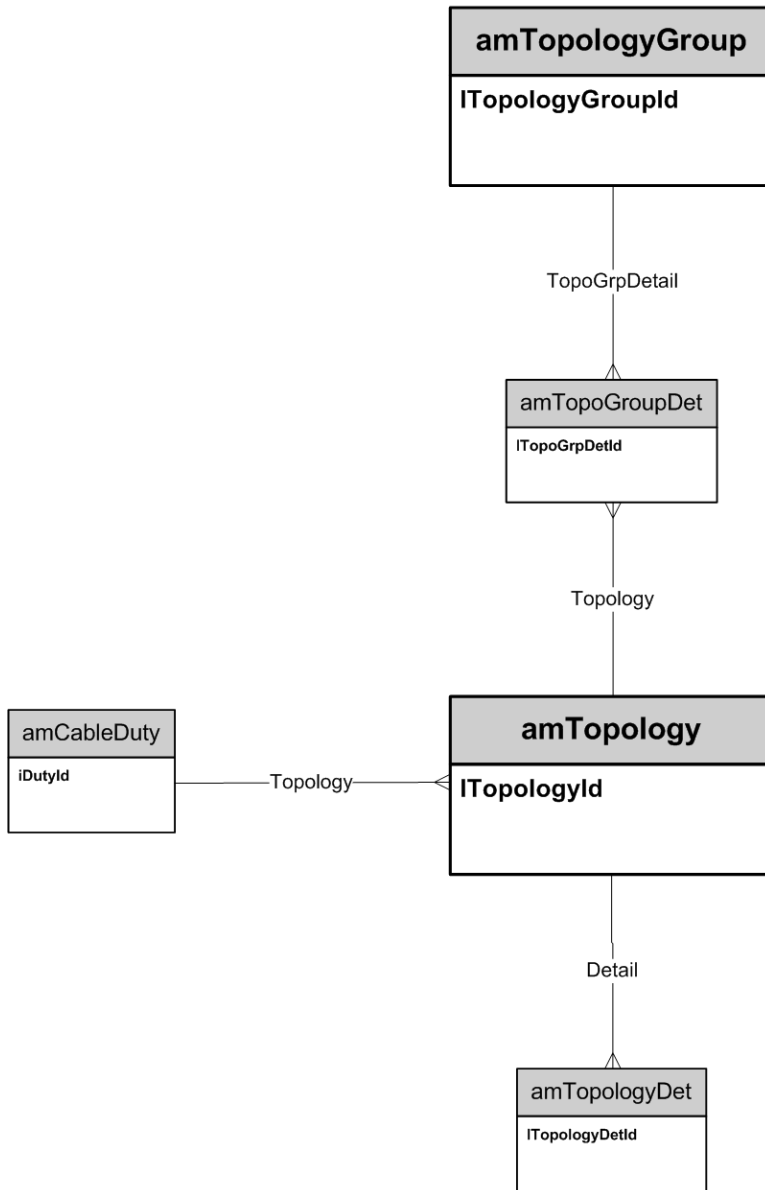
Slots



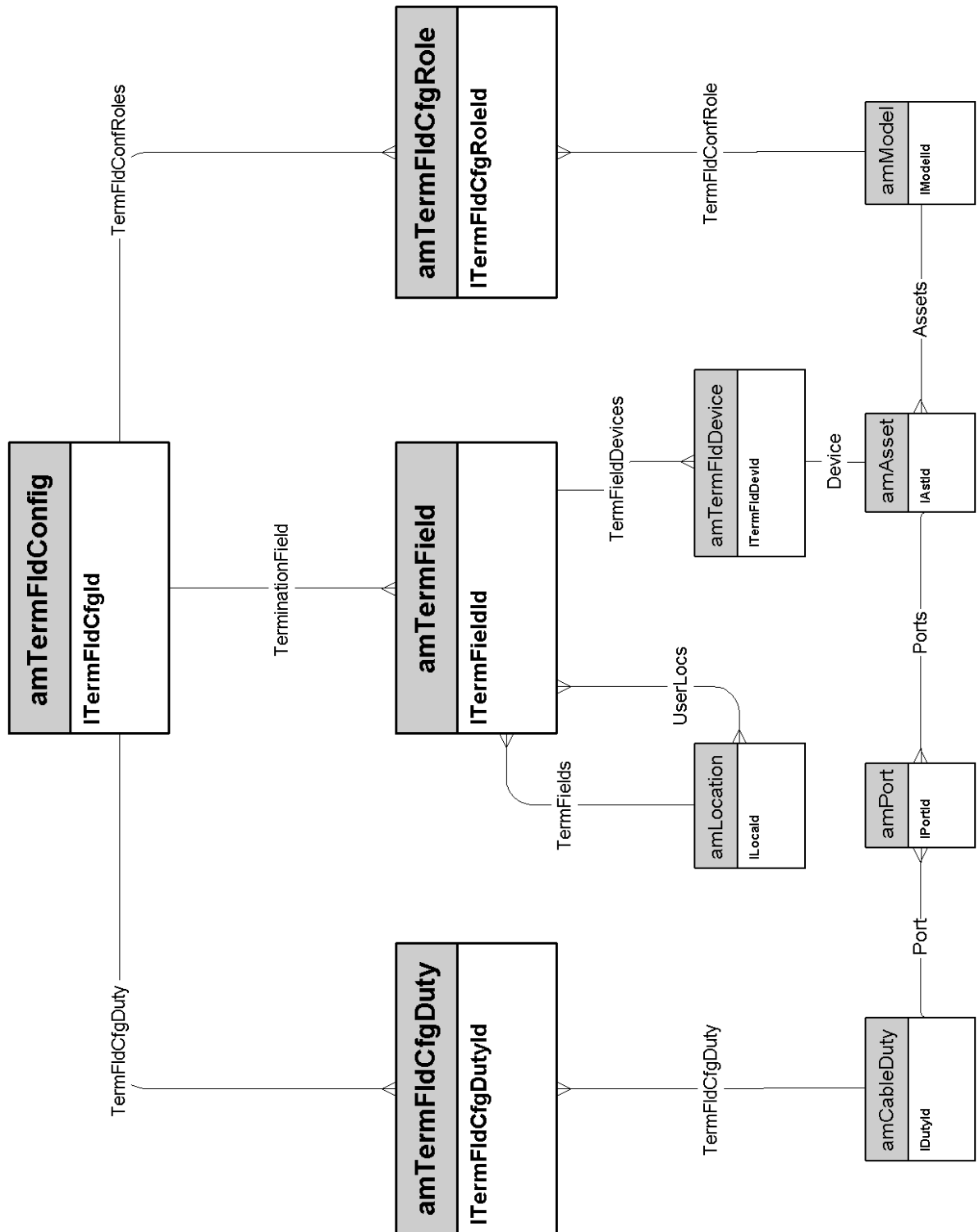
Topologies



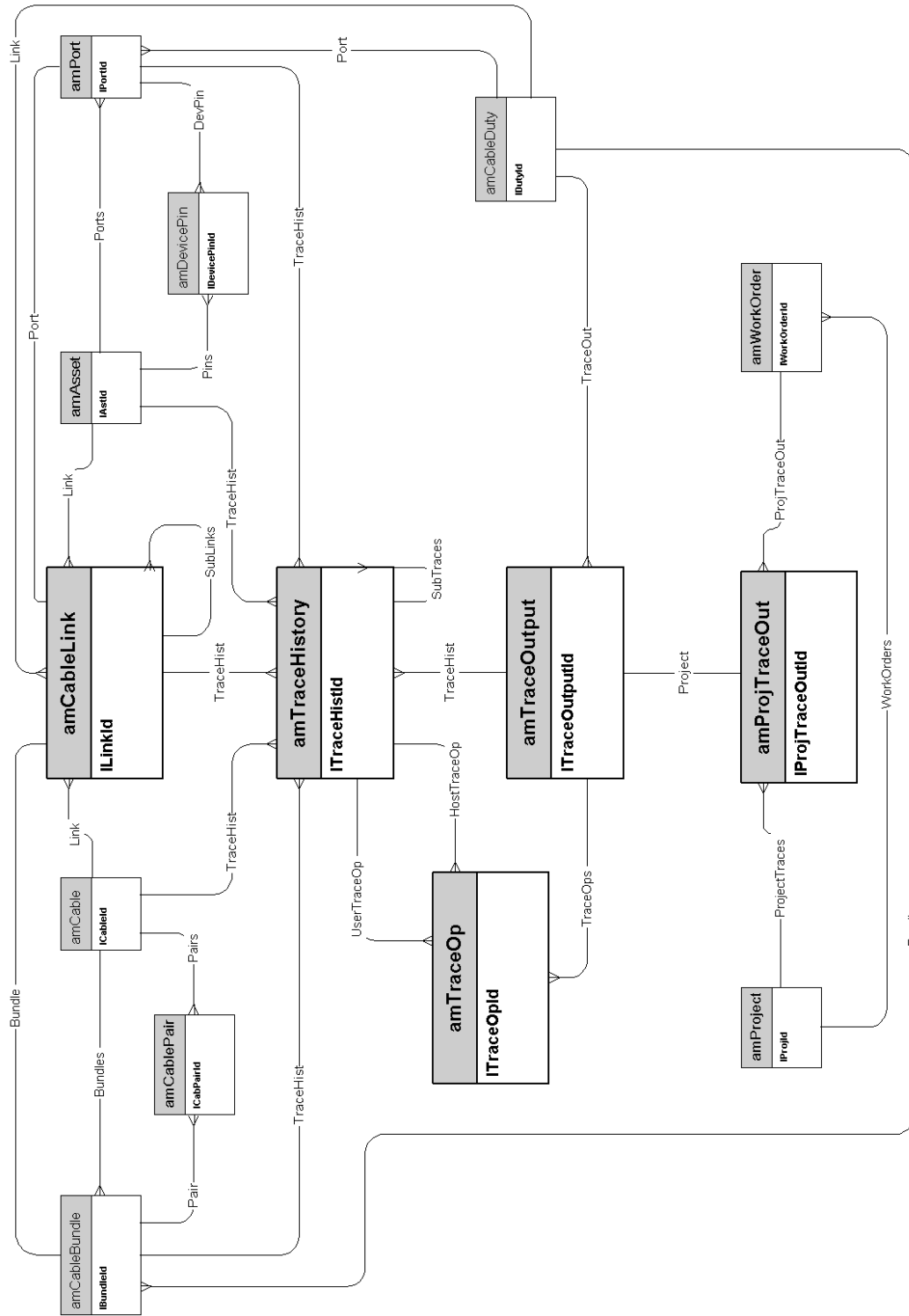
Topology groups



Termination-field configurations



Cable links

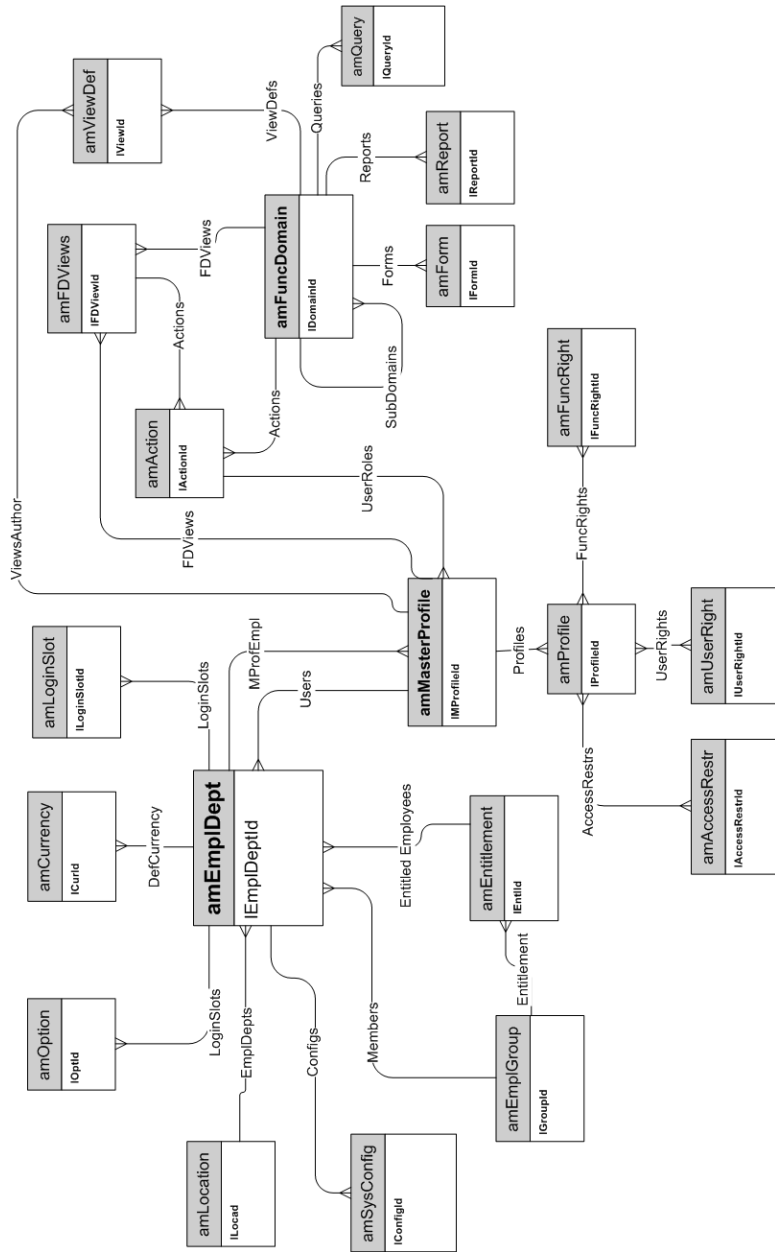


Chapter 8: Administration

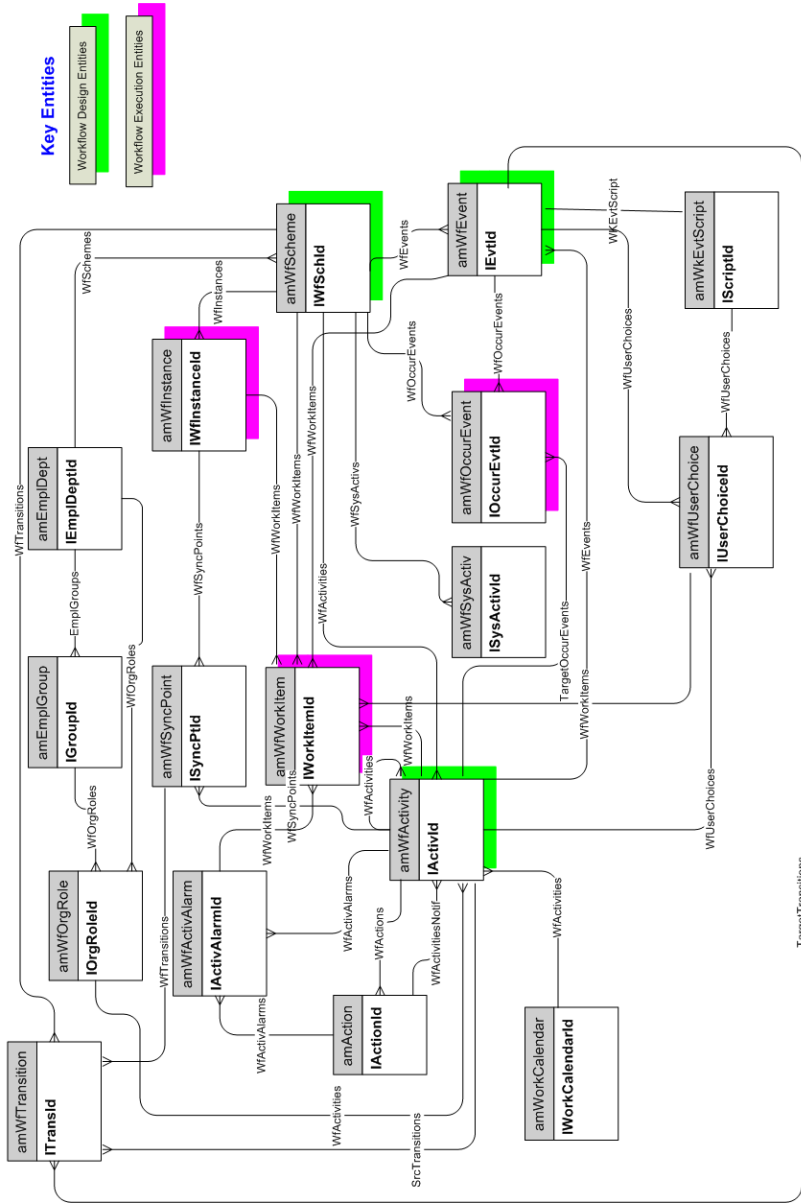
This chapter presents the diagram of the following physical data models:

Access to the database	56
Workflows	57

Access to the database



Workflows

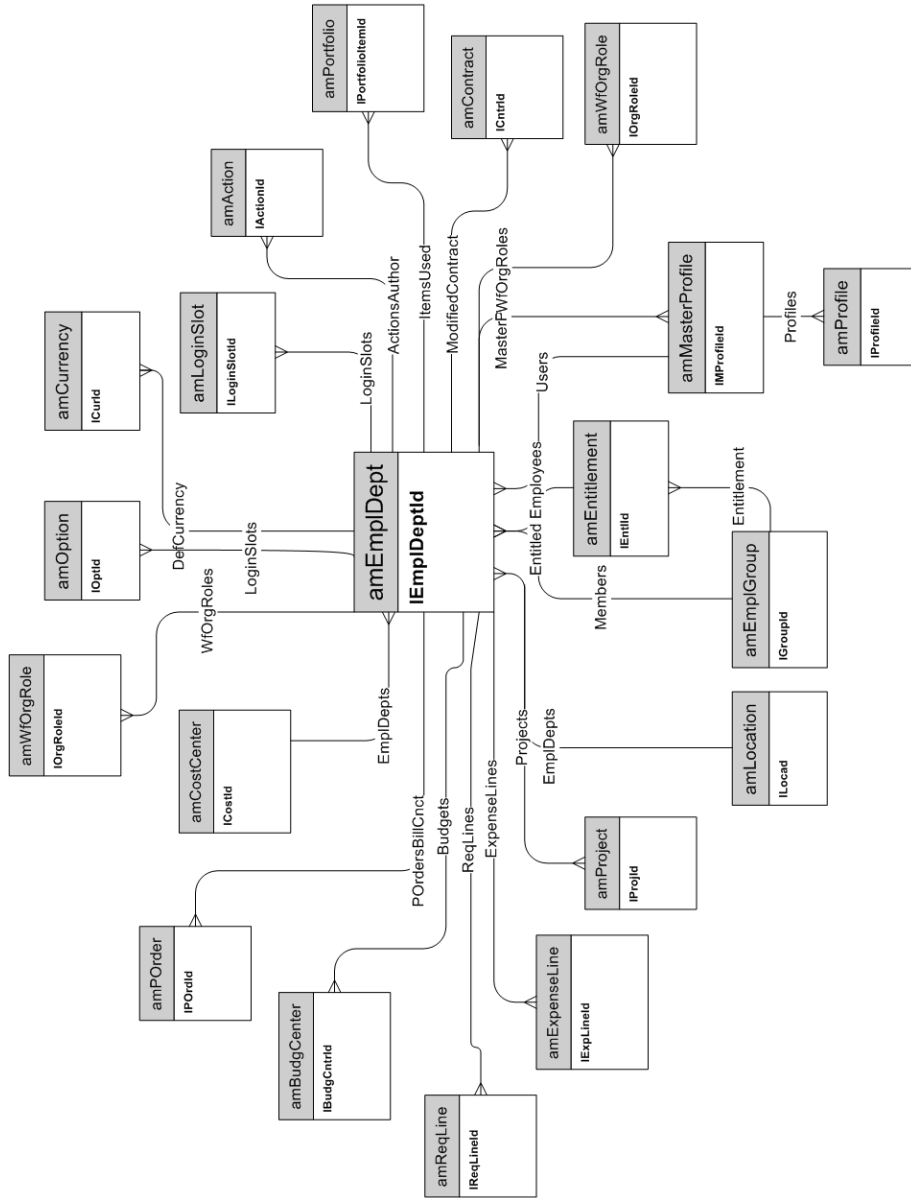


Chapter 9: Organization

This chapter presents the diagram of the following physical data model:

Employees and Departments	60
---------------------------------	----

Employees and Departments

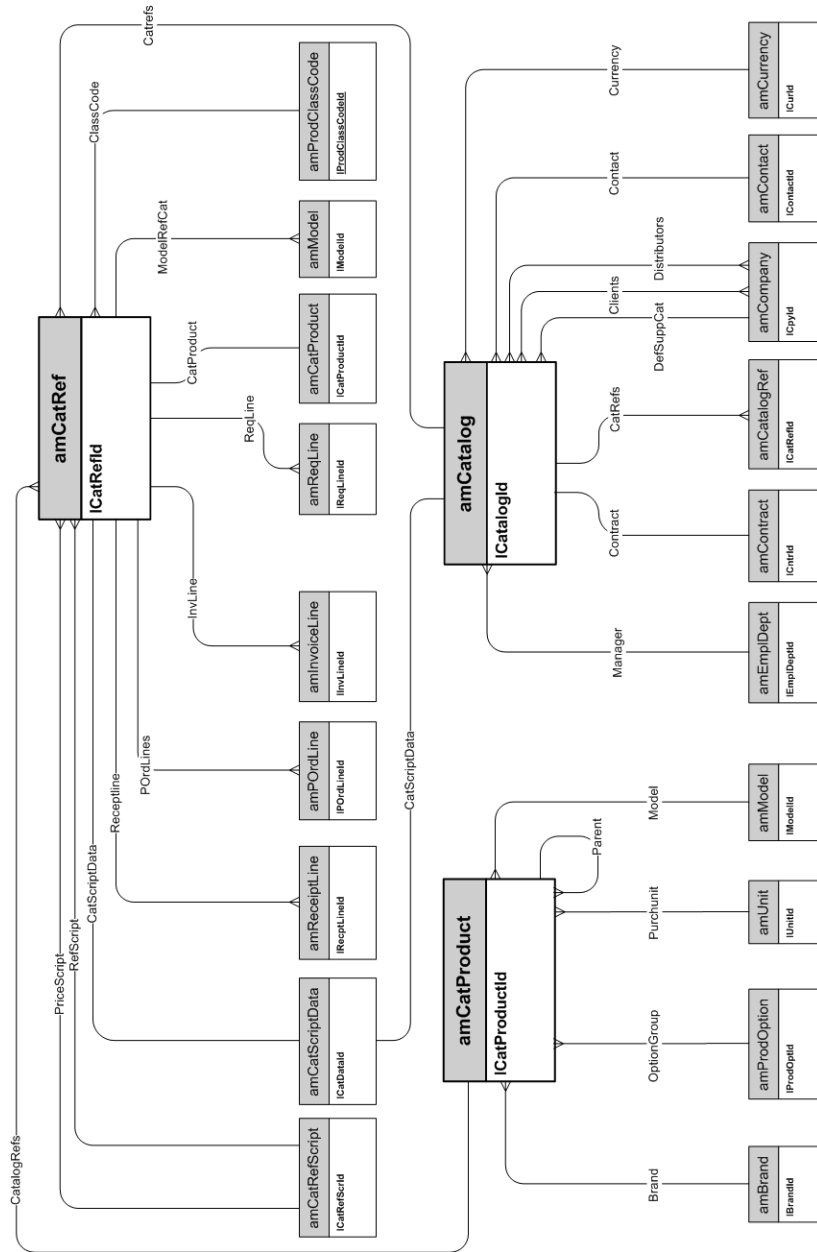


Chapter 10: Catalog

This chapter presents the diagram of the following physical data model:

Catalog	62
---------------	----

Catalog



We appreciate your feedback!

If you have comments about this document, you can [contact the documentation team](#) by email. If an email client is configured on this system, click the link above and an email window opens with the following information in the subject line:

Feedback on Asset Manager, 9.40 Physical Data Models

Just add your feedback to the email and click send.

If no email client is available, copy the information above to a new message in a web mail client, and send your feedback to ovdoc-ITSM@hp.com.