

# HP IT Executive Scorecard

For the Windows® operating system

Software Version: 9.40

## Enterprise Architecture Content Acceleration Pack Guide

Document Release Date: January 2013

Software Release Date: January 2013



## Legal Notices

### Warranty

The only warranties for HP products and services are set forth in the express warranty statements accompanying such products and services. Nothing herein should be construed as constituting an additional warranty. HP shall not be liable for technical or editorial errors or omissions contained herein.

The information contained herein is subject to change without notice.

### Restricted Rights Legend

Confidential computer software. Valid license from HP required for possession, use or copying. Consistent with FAR 12.211 and 12.212, Commercial Computer Software, Computer Software Documentation, and Technical Data for Commercial Items are licensed to the U.S. Government under vendor's standard commercial license.

### Copyright Notice

© Copyright 2011-2013 Hewlett-Packard Development Company, L.P.

### Trademark Notices

- Adobe® and Acrobat® are trademarks of Adobe Systems Incorporated.
- AMD and the AMD Arrow symbol are trademarks of Advanced Micro Devices, Inc.
- Google™ and Google Maps™ are trademarks of Google Inc.
- Intel®, Itanium®, Pentium®, and Intel® Xeon® are trademarks of Intel Corporation in the U.S. and other countries.
- Java is a registered trademark of Oracle and/or its affiliates.
- Microsoft®, Windows®, Windows NT®, Windows® XP, Windows Vista® and SQL Server® are U.S. registered trademarks of Microsoft Corporation.
- Oracle is a registered trademark of Oracle Corporation and/or its affiliates.

## Documentation Updates

The title page of this document contains the following identifying information:

- Software Version number, which indicates the software version.
- Document Release Date, which changes each time the document is updated.
- Software Release Date, which indicates the release date of this version of the software.

To check for recent updates or to verify that you are using the most recent edition of a document, go to:

**<http://h20230.www2.hp.com/selfsolve/manuals>**

This site requires that you register for an HP Passport and sign in. To register for an HP Passport ID, go to:

**<http://h20229.www2.hp.com/passport-registration.html>**

Or click the **New users - please register** link on the HP Passport login page.

You will also receive updated or new editions if you subscribe to the appropriate product support service. Contact your HP sales representative for details.

## Support

Visit the HP Software Support Online web site at:

**<http://www.hp.com/go/hpsoftwaresupport>**

This web site provides contact information and details about the products, services, and support that HP Software offers.

HP Software online support provides customer self-solve capabilities. It provides a fast and efficient way to access interactive technical support tools needed to manage your business. As a valued support customer, you can benefit by using the support web site to:

- Search for knowledge documents of interest
- Submit and track support cases and enhancement requests
- Download software patches
- Manage support contracts
- Look up HP support contacts
- Review information about available services
- Enter into discussions with other software customers
- Research and register for software training

Most of the support areas require that you register as an HP Passport user and sign in. Many also require a support contract. To register for an HP Passport ID, go to:

**<http://h20229.www2.hp.com/passport-registration.html>**

To find more information about access levels, go to:

**[http://h20230.www2.hp.com/new\\_access\\_levels.jsp](http://h20230.www2.hp.com/new_access_levels.jsp)**

# Contents

Contents .....	5
Enterprise Architecture Compliance Content Acceleration Pack .....	6
We appreciate your feedback! .....	9

# Enterprise Architecture Compliance Content Acceleration Pack

The purpose of the Enterprise Architecture Compliance Content Acceleration Pack (CAP) is to provide a set of items (Dashboard pages, Scorecards, Contexts, KPIs, and more) that automatically gathers information from across your enterprise to build key performance indicators (KPIs) related to Enterprise Architecture Compliance-related issues.

The CAP provides broad and deep insight that should enable you to understand if the enterprise architecture is compliant.

## Learn More

The CAP includes the following items:

### Pages

- Enterprise Architecture Demo Page

### Scorecards

- Enterprise Architecture

### Out-of-the-box Business Contexts , KPIs and Metrics, and Data Files (.CSV Tables)

The following entities are included in the CAP:

Out-of-the-box Business Contexts	KPIs
<ul style="list-style-type: none"><li>• EnterpriseArchitecture</li></ul>	<ul style="list-style-type: none"><li>• % of Added New Services</li><li>• % of Service Portfolio Delivered</li><li>• Alignment with Strategy Architecture</li><li>• Application Portfolio Deployable into Cloud</li><li>• Architecture Compliance</li><li>• Average Delivery Time for New Service Version</li><li>• Average Development Time for New Service</li><li>• Documentation Compliance</li><li>• Number of Deployed Services</li></ul>

Out-of-the-box Business Contexts	KPIs
	<ul style="list-style-type: none"><li>• Number of Retired Applications</li><li>• Service Reuse</li></ul>

The cross-references in the Out-of-the-box Business Contexts column are to the *Content Reference Guide*.

The cross-references in the KPIs and Metrics column are to the *KPIs, Metrics, and Data Lineage Reference Guide*.

## Data Files (CSV Tables)

The data files or .CSV tables are included in the CAPs themselves and provide the context and data needed by the CAP to show data in the relevant Dashboard page. For details, see [Data Files \(.CSV Tables\)](#) in the *Content Reference Guide*.

## Structure

**Scorecard:** Enterprise Architecture

- **Perspective:** Enterprise Architecture Perspective
  - **Objective:** IT Services Support Business Functions
  - **Objective:** Ability to Absorb Business Changes in IT
  - **Objective:** Cost Optimization

# Tasks

This section includes:


["Upload and manage the Content Acceleration Pack" below](#)

["View the Enterprise Architecture Compliance CAP-related Dashboard page" below](#)

## Upload and manage the Content Acceleration Pack

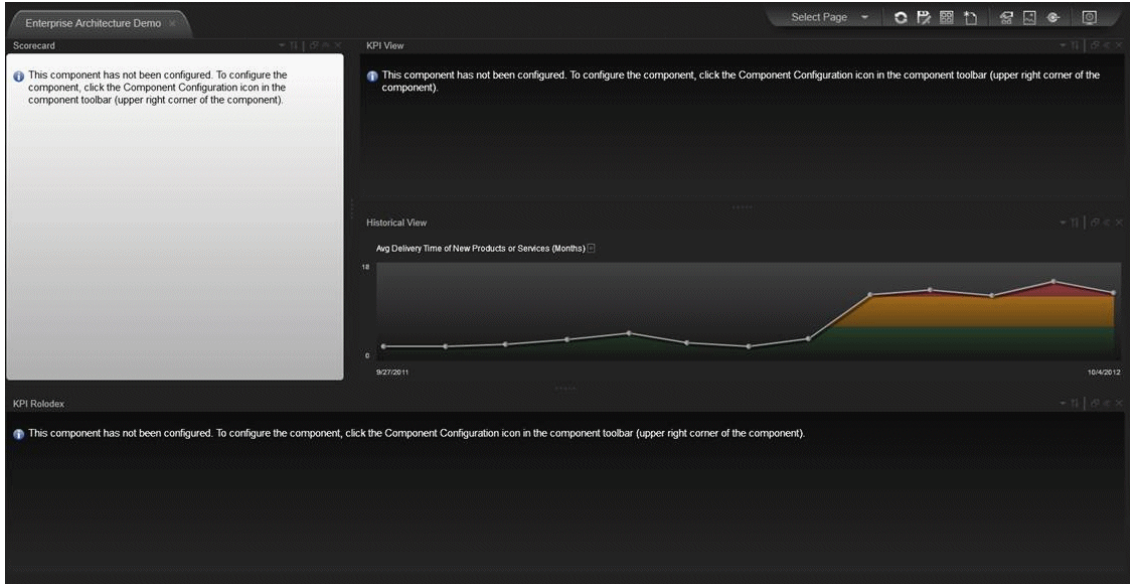
For details, see [Manage Content Acceleration Packs Using CAP Management](#) in the *Administrator Guide*.

## View the Enterprise Architecture Compliance CAP-related Dashboard page

1. In the Executive Scorecard application, close all the tabs. The Dashboard is displayed.
2. Click the **Demo Enterprise Architecture Compliance Main Page** tab. If it is not displayed, click the **Page Gallery**  button in the Dashboard toolbar, double-click the **Demo Enterprise Architecture Compliance Main Page** icon and close the Page Gallery dialog box.

# UI Description

## Page





## We appreciate your feedback!

If you have comments about this document, you can [contact the documentation team](#) by email. If an email client is configured on this system, click the link above and an email window opens with the following information in the subject line:

**Feedback on IT Executive Scorecard, 9.40 Enterprise Architecture Content Acceleration Pack Guide**

Just add your feedback to the email and click send.

If no email client is available, copy the information above to a new message in a web mail client, and send your feedback to [SW-Doc@hp.com](mailto:SW-Doc@hp.com).

