

HP Business Process Monitor

For the Windows operating system

Software Version: 9.22

Recording Mobile Apps for BPM - Best Practices

Document Release Date: April 2013

Software Release Date: April 2013



Legal Notices

Warranty

The only warranties for HP products and services are set forth in the express warranty statements accompanying such products and services. Nothing herein should be construed as constituting an additional warranty. HP shall not be liable for technical or editorial errors or omissions contained herein.

The information contained herein is subject to change without notice.

Restricted Rights Legend

Confidential computer software. Valid license from HP required for possession, use or copying. Consistent with FAR 12.211 and 12.212, Commercial Computer Software, Computer Software Documentation, and Technical Data for Commercial Items are licensed to the U.S. Government under vendor's standard commercial license.

Copyright Notice

© Copyright 2005 - 2013 Hewlett-Packard Development Company, L.P.

Trademark Notices

Adobe® is a trademark of Adobe Systems Incorporated.

Microsoft® and Windows® are U.S. registered trademarks of Microsoft Corporation.

UNIX® is a registered trademark of The Open Group.

Documentation Updates

The title page of this document contains the following identifying information:

- Software Version number, which indicates the software version.
- Document Release Date, which changes each time the document is updated.
- Software Release Date, which indicates the release date of this version of the software.

To check for recent updates or to verify that you are using the most recent edition of a document, go to:

<http://h20230.www2.hp.com/selfsolve/manuals>

This site requires that you register for an HP Passport and sign in. To register for an HP Passport ID, go to:

<http://h20229.www2.hp.com/passport-registration.html>

Or click the **New users - please register** link on the HP Passport login page.

You will also receive updated or new editions if you subscribe to the appropriate product support service. Contact your HP sales representative for details.

This document was last updated: Tuesday, March 19, 2013

Support

Visit the HP Software Support Online web site at:

<http://www.hp.com/go/hpsoftwaresupport>

This web site provides contact information and details about the products, services, and support that HP Software offers.

HP Software online support provides customer self-solve capabilities. It provides a fast and efficient way to access interactive technical support tools needed to manage your business. As a valued support customer, you can benefit by using the support web site to:

- Search for knowledge documents of interest
- Submit and track support cases and enhancement requests
- Download software patches
- Manage support contracts
- Look up HP support contacts
- Review information about available services
- Enter into discussions with other software customers
- Research and register for software training

Most of the support areas require that you register as an HP Passport user and sign in. Many also require a support contract. To register for an HP Passport ID, go to:

<http://h20229.www2.hp.com/passport-registration.html>

To find more information about access levels, go to:

http://h20230.www2.hp.com/new_access_levels.jsp

Contents

Recording Mobile Apps for BPM - Best Practices	1
Contents	5
Introduction	7
Choosing a Mobile Monitoring Solution	8
Mobile Monitoring Options	8
Monitoring Solutions	8
Application Types	9
Protocols	9
Native Mobile Apps - Recording Methods	10
Android	11
Installing the SDK	11
Creating and Running an Android Virtual Device (AVD)	12
Configuring a Proxy on the Android Network	13
Installing an Application on the Android Emulator	14
Recording a Mobile Native Application	14
Recording a Secure/SSL Native Application	15
Recording a PCAP File on an Android Mobile Device	17
Troubleshooting	17
iPhone	19
Setting up an Ad Hoc Connection on a Windows Working Station	19
Recording Using an Ad Hoc Connection	19
Windows Phone 7	21
Installing the Emulator	21
Running the Emulator	21
Recording a Native Mobile Application with VuGen	21
Blackberry	23
Installing the BlackBerry Emulator	23
Recording a Native Mobile Application with VuGen	23
WebOS	24

Recording a Native Mobile Application with VuGen	24
Creating a Script from a PCAP File	25
How to Create a Script from a PCAP File	25
TruClient	26
Recording Mobile TruClient with VuGen	26

Chapter 1

Introduction

Business Process Monitor (BPM) runs scripts that are recorded by Virtual User Generator (VuGen). This document provides best practices for using VuGen to record mobile native applications for BPM. The document provides general best practices, as well as explanations about a number of emulators. The document also provides a brief description of how to record scripts using the Mobile True client protocol.

A mobile app (HTTP/HTML) is a protocol that enables you to develop scripts using mobile devices or device emulators that communicate with servers over HTTP. You can record network traffic to a capture file (PCAP file) and create a VuGen script, or you can use a mobile emulator on your VuGen machine to develop scripts.

Mobile emulators are available for free on the web. You must install the correct emulator version that is supported by your application, and meet the system requirements for each emulator software you use.

Note:

- This document is intended for VuGen experts who are recording scripts for BPM.
- For an overview of using HP LoadRunner for mobile performance testing, see <http://h30499.www3.hp.com/t5/HP-LoadRunner-and-Performance/Who-s-up-for-some-mobile-performance-testing/ba-p/5974699>.

Chapter 2

Choosing a Mobile Monitoring Solution

In order to monitor a mobile application, you need to first answer the following questions:

1. Is it a technology-based application using HTML or HTTP (mobile web browser)?
2. Is the software installed on the machine locally (native application), or can you browse using browsing software such as IE, Firefox, or Safari?

If the application does **not** support HTML or HTTP, you need to use real-device monitoring like the Perfecto integration.

If the application **supports** HTML or HTTP, you need to decide what is important to you in your application monitoring:

- Do you want to bounce your application via wireless carrier (real wireless carrier network monitoring)?
- Do you only want to monitor your application backend, no matter which network you use (proactive backend-side monitoring)?
- Is it important to you to simulate client activity over a specific device (real-device user monitoring)?

Mobile Monitoring Options

The following tables can help you choose the best solution to your mobile monitoring:

- "Monitoring Solutions" below
- "Application Types" on next page
- "Protocols" on next page
- "Native Mobile Apps - Recording Methods" on page 10

Monitoring Solutions

Monitoring Solution	Protocols	BPM installation
Real wireless carrier network monitoring	<ul style="list-style-type: none">• Mobile TruClient• Mobile App (HTTP/HTML)• Mobile PerfectoMobile Integration	Add to the BPM machine a 3G card to emulate real carrier network connection (except for Perfecto integration).

Proactive backend-side monitoring	<ul style="list-style-type: none"> • Mobile TruClient • Mobile App (HTTP/HTML) 	No need to add 3G card.
Real-device user monitoring	Mobile PerfectoMobile Integration	No need to add 3G card.

Application Types

Application Type	Protocols	Comments
Native	Mobile App (HTTP/HTML) Mobile PerfectoMobile Integration	See "Native Mobile Apps - Recording Methods" on next page for more details.
Web Browser	Mobile TruClient Mobile App (HTTP/HTML)	TruClient works with Firefox browser API , and will soon work with IE.

Protocols

Protocols	Methods	Comments
Mobile TruClient	<ul style="list-style-type: none"> • Web browser based protocol. • Recording using VugGen using a local PC Firefox/IE browser. 	No need for 3G connection or mobile device, or mobile emulators.

Mobile App (HTTP/HTML)	<p>Supports both web browser, and native:</p> <ul style="list-style-type: none"> • For web browser recording see above Mobile TruClient comments. • For Native recording, see "Native Mobile Apps - Recording Methods" below. 	<p>The script is simply an HTTP/Web regular script emulating a specific UserAgent (Device).</p> <p>For SSL applications, either use the Android emulator recording method (which avoids certificate imports), or get the certificate from the application admin, and import it to VuGen to enable decryption.</p>
Mobile PerfectoMobile Integration	<p>This can be done either using a QTP script, or using a VuGen template.</p>	<p>VuGen templates save you the QTP integration, but you must open BPM to the Perfecto open API interface.</p>

Native Mobile Apps - Recording Methods

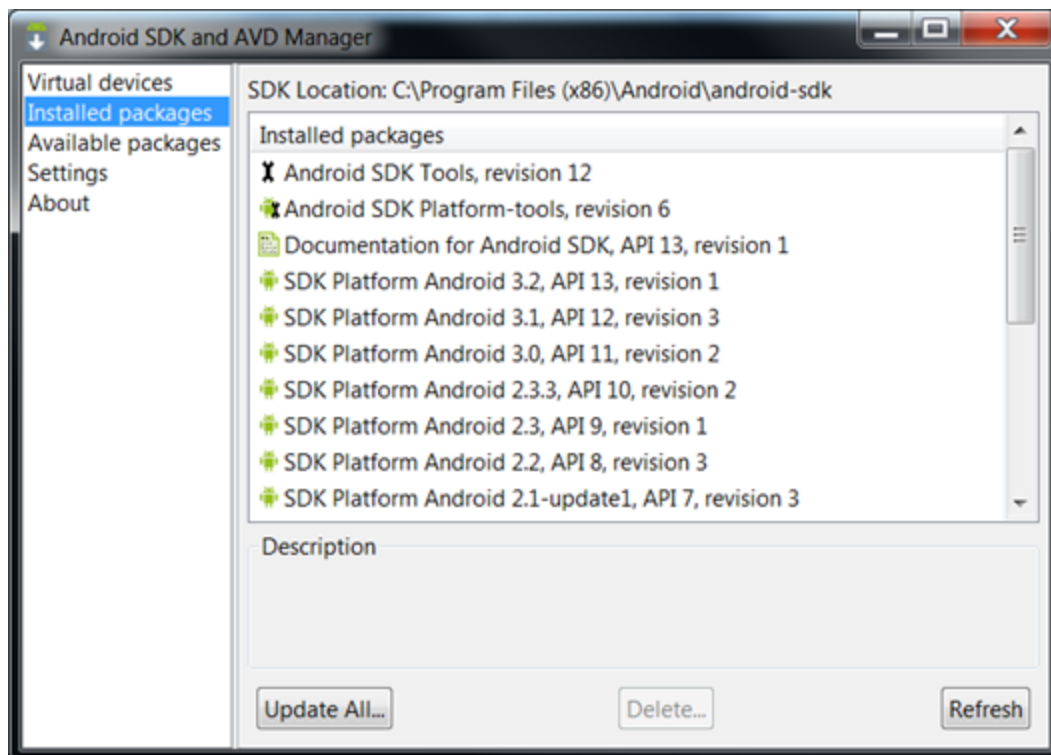
Capture File Source	Supported by Mobile Sniffer Agent	Advantages	Disadvantages
Mobile device		Records the real traffic that comes from the device.	Requires administrator permissions or "rooted" device.
VuGen with configured "hot spot" wireless access point	Yes	<ul style="list-style-type: none"> • Easy and intuitive. • Administrator permissions are not required. 	<ul style="list-style-type: none"> • Not all devices support ad-hoc wireless access points. • Captures WiFi only (does not capture cellular network traffic).
Server	Yes	Records real traffic (both WiFi and cellular network traffic).	<ul style="list-style-type: none"> • Requires administrator permissions. • Requires installation of software on the server.
Mobile Device emulator	Yes	<ul style="list-style-type: none"> • No device required. • No 3G needed. 	Requires locating and installing device emulator.

Chapter 3

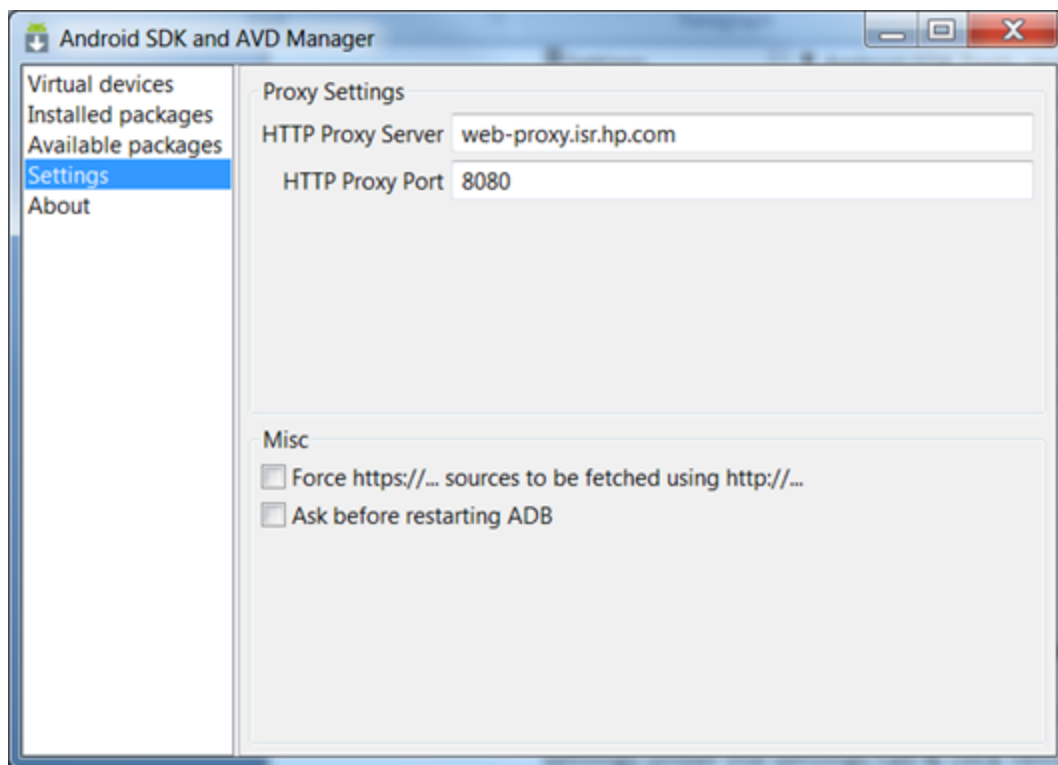
Android

Installing the SDK

1. Download and install the Android SDK from the following location:
<http://developer.android.com/sdk/index.html>.
2. Start the SDK Manager.
3. Install the relevant APIs and Android platform tools.



4. If the SDK Manager fails to retrieve the list of available tools, check your Internet proxy settings under the **Settings** tab and click **Refresh**.



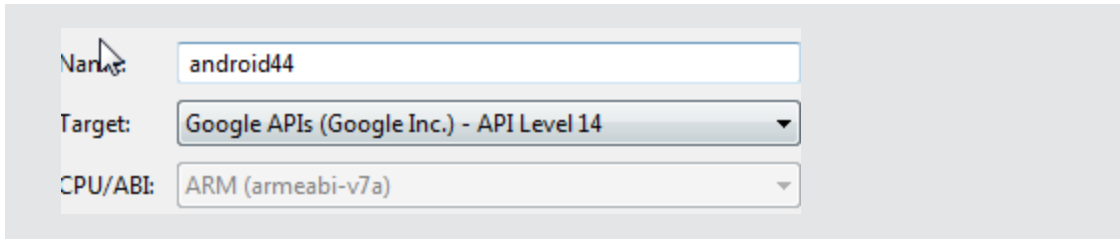
Creating and Running an Android Virtual Device (AVD)

To create an Android Virtual Device:

1. Open a command line and navigate to `<ANDROID_SDK>\tools`, where `<ANDROID_SDK>` is the path where you installed the Android SDK.
2. Use **android list targets** to view the list of available APIs and their IDs.
3. Create a new virtual device using the command : **android create avd -n <avd_name> -t <target_id>**, where:
 - `<target_id>` is the number taken from the target list
 - `<avd_name>` is the desired virtual machine name

Note:

- In Android 4.0 the AVD Manager is located in the Tools directory.
- Ensure you select a device with Google APIs.

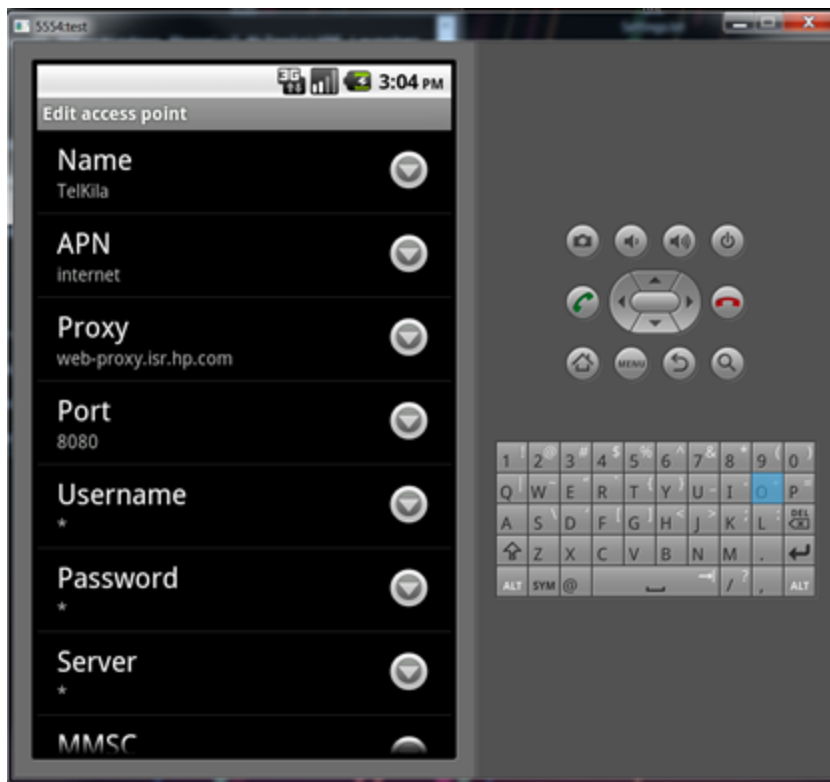


To run an Android Virtual Device:

1. Open a command line and navigate to <ANDROID_SDK>\tools, where <ANDROID_SDK> is the path where you installed the Android SDK.
2. Run the command **emulator @<avd_name>**, where <avd_name> is the name you used when creating the AVD.

Configuring a Proxy on the Android Network

1. Run the AVD as described in "Creating and Running an Android Virtual Device (AVD)" on previous page.
2. On the HOME screen, click **Menu**.
3. Select **Settings > Wireless & Networks > Mobile Networks > Access Point Names – Telkila**.
4. Enter your proxy address in the **Proxy** field.
5. Enter the port number in the **Port** field.



Installing an Application on the Android Emulator

1. Open the AVD.
2. Open a command line and navigate to <ANDROID_SDK>\tools, where <ANDROID_SDK> is the path where you installed the Android SDK.
3. Run the command **adb install <\$APK>**, where <\$APK> is the name of the apk file.

Note the following:

- Ensure you create a device that includes the Google Inc. API.
- If the proxy URL does not work, try using the proxy IP.
- Android does not support PAC proxy URLs. You must specify the exact proxy name or IP.

Recording a Mobile Native Application

1. Open VuGen and create a new virtual user (**File > New**).
2. Select **Mobile App (HTTP/HTML)**, and click **Start Recording**.
3. Select **Record Emulator** and configure the following parameters:
 - **Emulator to record:** Set the path to the emulator.exe file in the Android SDK folder.
 - **Command line:** Add any command line arguments that are required to run the emulator (for example, @avd_name,).
 - **Working directory:** Set the path to the directory in which the emulator.exe is located (typically ANDROID_SDK_FOLDER\tools).
4. Click **Finish**.
5. The Android emulator starts. Open your native app and perform the actions you want to record.
6. When you have recorded all the actions, go to VuGen and click **Stop**.
7. Select **File > Zip operations > Export to zip file**.
8. Enter a name for the script and click **OK**.
9. Click **OK** again.

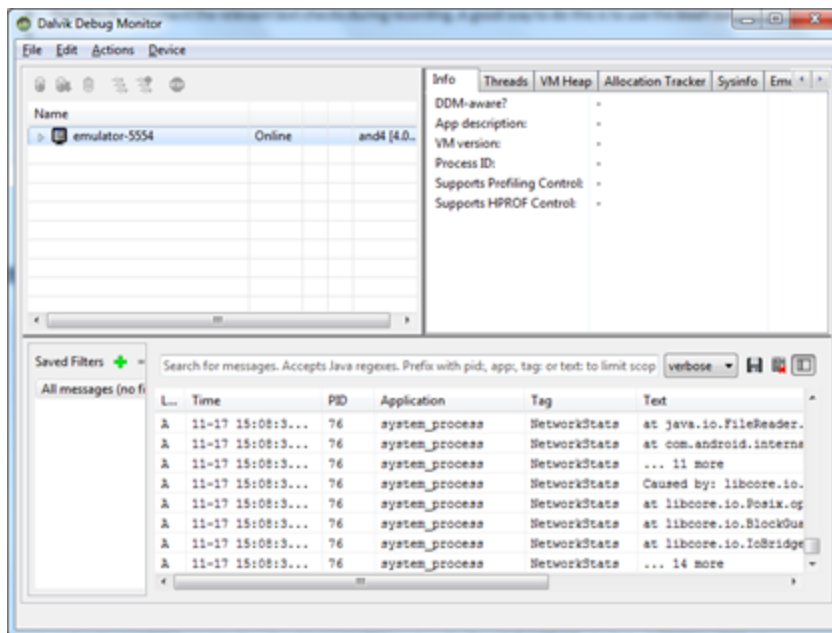
The script is now ready to run on Business Process Monitor (BPM).

Tip:

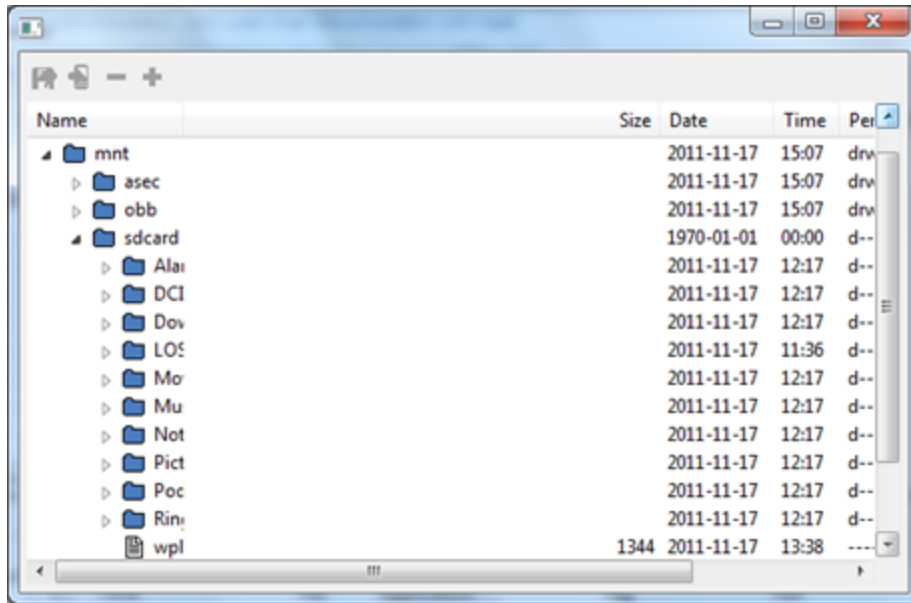
- **Computer resources:** Ensure you have enough computer memory when recording.
- **Slow start up:** Usually, the emulator start up is very slow and can take several minutes.
- **Text check:** Document the relevant text checks during recording. A good way to do this is to use the Inset comments feature.

Recording a Secure/SSL Native Application

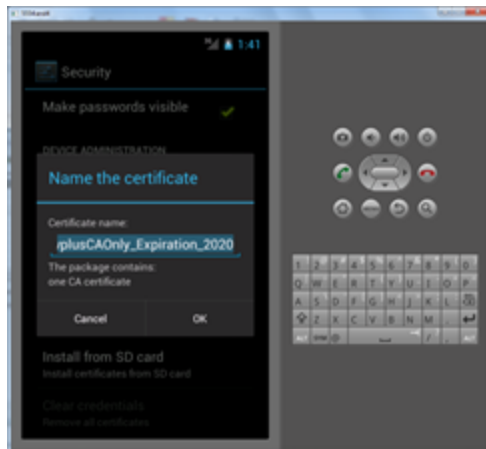
1. Add **sdcard** to the android emulator:
 - a. Open the Android emulator installation directory and run **AVD Manager.exe**.
 - b. Select the Android 4.0 emulator, and choose **Edit**.
 - c. Choose **sd card with 10 MB** (you can make this any size), and choose **Edit AVD** to save.
2. Copy the VuGen certificate to the sdcard:
 - a. Start the Android emulator, and wait for the emulator to load.
 - b. Select <android emulator installation directory>\tools\ddms.bat.



- c. Select the Android emulator > **Device** > **File explorer**.
- d. Browse to `"/mnt/sdcard"` directory > **Push file onto device** (icon with right arrow).



- e. Choose the certificate: C:\Program Files\Hp\LoadRunner\bin\certs\wplusCAOnly_Expiration_2020.crt, and make sure it is copied to the sdcard (you should see it under /mnt/sdcard/wplusCAOnly_Expiration_2020.crt).
- f. In the Android 4.0 emulator, select **Menu > System Settings > Security > Install from sdcard (install certificates from sdcard) > wplusCAOnly_Expiration_2020.crt > OK.** (Note that you may be asked to add a PIN code.)



- g. To verify the certificate is installed, in the Android 4.0 emulator select **Menu > System Settings > Security > Trusted Credentials > User.** You should see **Mercury Interactive Corp Winsock Plus Protocol Interceptor.**



Recording a PCAP File on an Android Mobile Device

Prerequisites: You must have an Android-based mobile device with **root** permissions.

To record a PCAP file:

1. From the Android Market, download the **Shark** app.
2. Open the **Shark** app and start recording.

Troubleshooting

Problem: The emulator does not load through VuGen.

Solution:

- Check the command line arguments are correct.
- Make sure to change the path for the Android emulator so that each folder name is no longer than 8 characters (for example, program files (x86)**progra~2**).

Problem: There is no Internet connection from the emulator.

Solution: Check the proxy settings in **Home Screen > Menu > Settings > Wireless & networks > Mobile networks > Access Points Names > Telkila > Proxy**.

Problem: The emulator does not record the application through VuGen.

Solution: If your application is using HTTPS/Secure protocol, see "[Recording a Mobile Native Application](#)" on page 14.

Problem: When you try recording in VuGen you receive an application login failure, but when you launch the application using AVD Manager or a command line, you can log in successfully.

Solution: SSL communication failure; try the following procedure: "[Recording a Mobile Native Application](#)" on page 14.

Chapter 4

iPhone

Setting up an Ad Hoc Connection on a Windows Working Station

1. Make sure the wireless adapter is enabled.
2. Select **Network and sharing center > Tasks** and click **Manage wireless networks**.
3. Click **Add**.
4. Select **Create an ad hoc network** and click **Next**.
5. Enter a network name and configure the encryption type and password.
6. Click **Turn on Internet Connection sharing**.
7. Click **Close**.
8. Connect your mobile device to the new ad hoc connection.

Recording Using an Ad Hoc Connection

1. Create an ad hoc connection on your PC as described in "Setting up an Ad Hoc Connection on a Windows Working Station" above, and connect your mobile device to the network.
2. Open VuGen.
3. Select **Mobile App (HTTP/HTML)**.
4. Click **Start Recording**.
5. Select the first option: **Record and analyze traffic**.
6. Ensure the host URL and port are correct.
7. Click **Connect**.
8. Select the correct network interface from the **Record network interface** combo box.
9. Click **Start Recording**.
10. Perform all the actions you want to record on your mobile device.
11. Click **Stop Recording**.
12. Save the recorded pcap file.
13. Click **Next**.
14. Select whether to filter by server side or client side, and select the IP by which to filter.

15. Click **Finish**.
16. Select **File > Zip operations > Export to zip file**.
17. Enter a name for the script and click **OK**.
18. Click **OK** again.

The script is now ready to run on BPM.

Chapter 5

Windows Phone 7

Installing the Emulator

1. Download the Windows Phone 7 development kit from the following link:
<http://www.microsoft.com/download/en/details.aspx?id=13890>.
2. Follow the on-screen instructions to install.
3. If you need to configure a proxy, see [http://msdn.microsoft.com/en-us/library/ff754351\(v=vs.92\).aspx#BKMK_ConfigProxy](http://msdn.microsoft.com/en-us/library/ff754351(v=vs.92).aspx#BKMK_ConfigProxy).

Running the Emulator

To run the emulator, perform one of the following:

- From the Windows Phone Developer Tools menu, select **Windows Phone 7 Emulator**.

OR

- From a command line:
 1. Navigate to where you installed the development kit (default is **C:\Program Files (x86)\Microsoft SDKs**).
 2. Navigate to the folder **Windows Phone\7.0\Tools\XDE Launcher**.
 3. Run the command **XdeLauncher "Windows Phone 7" "Windows Phone 7 Emulator"**.

Recording a Native Mobile Application with VuGen

1. Open VuGen and create a new virtual user (**File > New**).
2. Select **Mobile App (HTTP/HTML)**, and click **Start Recording**.
3. Select **Record Emulator** and configure the following parameters:
 - **Emulator to record:** Set the path to the **xdeLauncher.exe** file in the windows SDK folder
 - **Command line:** Add any command line arguments that are required to run the emulator. Default settings are: "Windows Phone 7" "Windows Phone 7 Emulator"
 - **Working directory:** Set the path to the directory in which the **xdeLauncher.exe** is located. The default path is: C:\Program Files (x86)\Microsoft SDKs\Windows Phone\7.0\Tools\XDE Launcher\.
4. Click **Finish**.

5. The Windows Phone 7 starts. Open your native app and perform the actions you want to record.
6. When you have recorded all the actions, go to VuGen and click **Stop**.
7. Select **File > Zip operations > Export to zip file**.
8. Enter a name for the script and click **OK**.
9. Click **OK** again.

The script is now ready to run on BPM.

Chapter 6

Blackberry

Installing the BlackBerry Emulator

1. Access the following link and select the phone model you want to emulate:
<http://us.blackberry.com/developers/resources/simulators.jsp>.
2. Follow the on-screen instructions to install.

Recording a Native Mobile Application with VuGen

1. Open VuGen and create a new virtual user (**File > New**).
2. Select **Mobile App (HTTP/HTML)**, and click **Start Recording**.
3. Select **Record Emulator** and configure the following parameters:
 - **Emulator to record:** Set the path to the emulator executable file in the BlackBerry emulator directory (for 9800, the default path is **C:\Program Files (x86)\Research In Motion\BlackBerry Smartphone Simulators 6.0.0\6.0.0.534 (9800)\9800.bat**).
 - **Command line:** Add any command line arguments that are required to run the emulator (for 9800 there are no required arguments).
 - **Working directory:** Set the path to the directory in which the **xdeLauncher.exe** is located. The default path for 9800 is **C:\Program Files (x86)\Research In Motion\BlackBerry Smartphone Simulators 6.0.0\6.0.0.534 (9800)**.
4. Click **Finish**.
5. The BlackBerry emulator starts. Open your native app and perform the actions you want to record.
6. When you have recorded all the actions, go to VuGen and click **Stop**.
7. Select **File > Zip operations > Export to zip file**.
8. Enter a name for the script and click **OK**.
9. Click **OK** again.

The script is now ready to run on BPM.

Chapter 7

WebOS

Recording a Native Mobile Application with VuGen

Prerequisites:

- VuGen
- WebOS emulator with Internet access
- Oracle VirtualBox

To record a native mobile application:

1. Open VuGen and create a new virtual user (**File > New**).
2. Select **Mobile App (HTTP/HTML)**, and click **Start Recording**.
3. Select **Record Emulator** and configure the following parameters:
 - **Emulator to record:** Set the path to the emulator executable file in the BlackBerry emulator directory (the default path is **C:\Program Files (x86)\HP webOS\SDK\bin\palm-emulator.bat**).
 - **Command line:** Add any command line arguments that are required to run the emulator (for WebOS there are no required arguments).
 - **Working directory:** Set the path to the directory in which the **xdeLauncher.exe** is located. The default path for WebOS is **C:\Program Files (x86)\HP webOS\SDK\bin**.
4. Click **Finish**.
5. The WebOS emulator starts. Open your native app and perform the actions you want to record.
6. When you have recorded all the actions, go to VuGen and click **Stop**.
7. Select **File > Zip operations > Export to zip file**.
8. Enter a name for the script and click **OK**.
9. Click **OK** again.

The script is now ready to run on BPM.

Chapter 8

Creating a Script from a PCAP File

Creating PCAP on the server side:

- When your application is in testing mode, you can install a sniffer on the application's server machine and capture the entire traffic between the server and different clients.
- By filtering a different mobile device IP each time, you can create different pcaps for each mobile device.

Creating PCAP on the client side

- You can install sniffers on different mobile devices machines and then capture the traffic between the mobile device and the server.
- Once a pcap file is ready, use the following instructions to create a VuGen script from pcap.

How to Create a Script from a PCAP File

1. Open VuGen and select **Mobile App (HTTP/HTML)**.
2. Click **Start Recording**.
3. Select **Analyze traffic**.
4. Browse to where you saved your pcap file and select it.
5. Select whether to filter by server side or client side, and select the IP by which to filter.
6. Click **Finish**.
7. Select **File > Zip operations > Export to zip file**.
8. Enter a name for the script and click **OK**.
9. Click **OK** again.

The script is now ready to run on BPM.

Tip: Use one pcap file per transaction, and then copy it to one script according to the flow you want to measure.

Chapter 9

TruClient

Recording Mobile TruClient with VuGen

Prerequisites:

- VuGen
- Proxy IP/URL (if you are using a proxy)

To record:

1. Open VuGen and create a new virtual user (**File > New**).
2. Select **Mobile 'TruClient'**, and click **Develop Script**.
3. If you are using a proxy, ensure you also set it in the **Recording Options**:
 - a. In VuGen, select **Tools > TruClient General Settings**.
 - b. Add the proxy settings to the **Automatic Proxy Configuration**.
4. Select a mobile device from the list.
5. Change the resolution, if necessary.
6. Click **OK**.
7. The browser loads. Use it to perform the actions you want to record.
8. Click **Stop**.
9. Select **File > Zip operations > Export to zip file**.
10. Enter a name for the script and click **OK**.
11. Click **OK** again.

The script is now ready to run on BPM.

For more information, refer to **Virtual User Generator > Help > Mobile Documentation**.