

HP Project and Portfolio Management Center

Software Version: 9.20

Release Notes

Document Release Date: March 2013 (Second Edition)

Software Release Date: February 2013



Legal Notices

Warranty

The only warranties for HP products and services are set forth in the express warranty statements accompanying such products and services. Nothing herein should be construed as constituting an additional warranty. HP shall not be liable for technical or editorial errors or omissions contained herein.

The information contained herein is subject to change without notice.

Restricted Rights Legend

Confidential computer software. Valid license from HP required for possession, use or copying. Consistent with FAR 12.211 and 12.212, Commercial Computer Software, Computer Software Documentation, and Technical Data for Commercial Items are licensed to the U.S. Government under vendor's standard commercial license.

Copyright Notices

© Copyright 1997-2013 Hewlett-Packard Development Company, L.P.

Trademark Notices

Adobe® is a trademark of Adobe Systems Incorporated.

Intel®, Intel® Itanium®, Intel® Xeon®, and Pentium® are trademarks of Intel Corporation in the U.S. and other countries.

Microsoft®, Windows®, Windows® XP, and Windows Vista® are U.S. registered trademarks of Microsoft Corporation.

Oracle and Java are registered trademarks of Oracle and/or its affiliates.

UNIX® is a registered trademark of The Open Group.

Documentation Updates

This manual's title page contains the following identifying information:

- Software version number, which indicates the software version
- Document release date, which changes each time the document is updated
- Software release date, which indicates the release date of this version of the software

To check for recent updates, or to verify that you are using the most recent edition of a document, go to:

h20230.www2.hp.com/selfsolve/manuals

You will also receive updated or new editions if you subscribe to the appropriate product support service. Contact your HP sales representative for details.

The following table indicates changes made to this document.

Publication Date	Summary of Changes
March 20, 2013 (Second Edition)	■ Added the <i>Updates to HP Deployment Management Extension for Oracle E-Business Suite and HP GL Migrator to Support Oracle E-Business Suite Release 12</i> section

Support

You can visit the HP Software Support Web site at:

hp.com/go/hpsoftwaresupport

HP Software Support Online provides an efficient way to access interactive technical support tools. As a valued support customer, you can benefit by using the support site to:

- Search for knowledge documents of interest
- Submit and track support cases and enhancement requests
- Download software patches
- Manage support contracts
- Look up HP support contacts
- Review information about available services
- Enter into discussions with other software customers
- Research and register for software training

Most of the support areas require that you register as an HP Passport user and sign in. Many also require a support contract.

To find more information about access levels, go to:

h20230.www2.hp.com/new_access_levels.jsp

To register for an HP Passport ID, go to:

h20229.www2.hp.com/passport-registration.html

Contents

1	Overview of Version 9.20	3
	Scope of this Release	3
	Documentation for PPM Center Version 9.20	4
	Installation Notes	5
	Updates to HP Deployment Management Extension for Oracle E-Business Suite and HP GL Migrator to Support Oracle E-Business Suite Release 12	5
	New Object Types Provided in Extension Jars	6
	Product Installation Sequence with PPM Center Version 9.2x	7
	Software and Hardware Requirements	9
	Known Problems and Limitations	9
	Dashboard	9
	HP Demand Management	10
	Installation	13
	Platform	14
	Platform - Workbench	14
	HP Deployment Management	15
	Integrations	17
	Integration with Quality Center (ALM)	17
	Integrations — Documentum	18
	HP Program Management	19
	HP Project Management	19
	Multilingual User Interface (MLU)	20
	HP Portfolio Management	20
	HP Resource Management	20
	HP Time Management	21

1 Overview of Version 9.20

This document provides an overview of the changes made to HP Project and Portfolio Management Center (PPM Center) for version 9.20. It contains important information not included in the manuals. The section *Known Problems and Limitations* on page 9 provides information about the changes introduced with the enhancements and fixes for version 9.20.

Scope of this Release

PPM Center version 9.20 improves many aspects of the product, including upgrade and functional areas.

For details about enhancements in this release, see the *What's New and What's Changed* guide. You can find this and other PPM Center documents as described in *Documentation for PPM Center Version 9.20*.



Defect fixes included in patches (up until 9.14.0004) on top of version 9.14 are rolled into version 9.20. If you are on PPM Center patch 9.14.0005 (or later), do not upgrade to PPM Center version 9.20 yet, otherwise you may encounter some regressions regarding the defect fixes included in 9.14.0005. You may want to wait for the next available patch on top of version 9.20 to have those defect fixes.

Documentation for PPM Center Version 9.20

All documentation for PPM Center version 9.20 can be found at the HP Software Product Manuals site at the following URL:

(<http://h20230.www2.hp.com/selfsolve/manuals>).

All of the documentation is in Adobe Acrobat (.pdf) format.

You can also access PPM Center documentation through the links provided under topic areas of your interest on the PPM Center Documentation Library page (**Open > Product Information > Library**).

Note that none of the documentation is included initially in your installation of PPM Center.

To download documentation, to check for updates, or to confirm that you have the most recent version, visit the following URL:

<http://h20230.www2.hp.com/selfsolve/manuals>

This site requires that you register for an HP Passport and sign in. To register for an HP Passport ID, go to:

<http://h20229.www2.hp.com/passport-registration.html>

or click the **New user - please register** link on the HP Passport login page.

You will receive updated or new editions if you subscribe to the applicable product support service. Contact your HP sales representative for details.



To view files in PDF format (*.pdf), you must have Adobe Acrobat Reader installed on your system. To download Adobe Acrobat Reader, go to: <http://www.adobe.com>.

Installation Notes

Instructions for installing PPM Center version 9.20 are provided in the *Installation and Administration Guide*.

Instructions for upgrading to PPM Center version 9.20 are provided in the *Upgrade Guide*.

If you plan to implement Operational Reporting for PPM Center, see the *Operational Reporting Administrator's Guide* for instructions.

If you are installing a language pack, see the *Release Notes for Language Pack for PPM Center 9.20*, available at the HP Manuals site.

If you plan to integrate the Releases module of Application Lifecycle Management version with PPM Center version 9.20, see the *HP Solution Integrations Guide* for important considerations.

Updates to HP Deployment Management Extension for Oracle E-Business Suite and HP GL Migrator to Support Oracle E-Business Suite Release 12

A set of jars for the HP Deployment Management Extension for Oracle E-Business Suite and HP GL Migrator version 9.12 provide support for Oracle E-Business Suite Release 12.

For detailed information about supportability of HP GL Migrator version 9.12 with various releases of Oracle E-Business Suite and with various versions of PPM Center and HP Object Migrator, see the latest *System Requirements and Compatibility Matrix* for PPM Center version 9.2x.

For detailed information about HP GL Migrator version 9.12, including installation and upgrade procedures, see the *HP GL Migrator Guide* for version 9.12.

A specific product installation or upgrade sequence must be followed when using PPM Center version 9.2x, as described in *Product Installation Sequence with PPM Center Version 9.2x* on page 7.

New Object Types Provided in Extension Jars

As described in *Product Installation Sequence with PPM Center Version 9.2x*, the jars for the HP Deployment Management Extension for Oracle E-Business Suite must be installed. The jars install the following PPM Center object types that must be used to support migrations for Oracle E-Business Suite Release 12:

- GL 912 :Budget Organisation
- GL 912 :Consolidations
- GL 912 :Cross Validation Rules
- GL 912 :FSG Row/Col Sets
- GL 912 :Journal Categories
- GL 912 :Journal Entry Sources
- GL 912 :Mass Allocation/Budget
- GL 912 :Summary Templates

These new object types are analogous to existing object types that do not have the “GL 912 :” prefix, except that the GL 912 :FSG Row/Col Sets object type is provided in HP GL Migrator version 9.12 for the first time (see *HP GL Migrator Guide* for version 9.12).

These object types are backward compatible with Oracle E-Business Suite Release 11i, and installing them does not overwrite any existing object types.

Product Installation Sequence with PPM Center Version 9.2x

To prepare to deploy HP GL Migrator version 9.12 and associated prerequisites, download the extension jar files described below for HP Deployment Management Extension for Oracle E-Business Suite, which bundles the following files:

- The following zip files for HP GL Migrator version 9.12:
 - CLGM_912.zip
 - CLGM_UPG_912.zip
- The following zip files for HP Object Migrator version 7.5:
 - CLM_75.zip
 - CLM_75_tar.gz
 - CLM_UPG75.zip
 - CLM_UPG75_tar.gz
- The following jar files for the HP Deployment Management Extension for Oracle E-Business Suite patch:
`ppm-920-OracleApps.jar`
`ppm-920-OracleApps912.jar`
- The following jar file for the HP Deployment Management Extension for Oracle Technology version 9.10:
`ppm-920-OracleTech.jar`
- The following jar file for the HP Deployment Management Extension for SAP Solutions:
`ppm-920-SAP.jar`

Starting with PPM Center version 9.2x (9.20 with or without an associated service pack) as a basis, the following product installations or upgrades must be performed in the following sequence to support using the HP Deployment Management Extension for Oracle E-Business Suite and HP GL Migrator with Oracle E-Business Suite Release 12:

1. HP Object Migrator version 7.5, if not already installed.

See the *HP Object Migrator Guide* for version 7.5.

2. HP GL Migrator version 9.12.

See the *HP GL Migrator Guide* for version 9.12.

3. PPM Center version 9.2x, if not already installed.


See the *Installation and Administration Guide* for version 9.20 and service pack *Release Notes* as appropriate.

4. HP Deployment Management Extension for Oracle E-Business Suite version 9.20, if not already installed.

See the *HP Deployment Management Extension for Oracle E-Business Suite Guide* for version 9.20.

5. HP Deployment Management Extension for Oracle E-Business Suite to allow the HP Deployment Management Extension for Oracle E-Business Suite version 9.20 and HP GL Migrator version 9.12 to support Oracle E-Business Suite Release 12.

To deploy extensions jars, you must use the following installation command:



```
sh kDeploy.sh -i OracleApps912
```

The HP Deployment Management Extension for Oracle Technology can be installed at any time after PPM Center version 9.2x is installed.

Software and Hardware Requirements

Before you install PPM Center version 9.20, make sure that your system meets the minimum requirements, as described in the *System Requirements and Compatibility Matrix*, available at the HP Manuals site.

Known Problems and Limitations

The following problems and limitations are known to exist in PPM Center version 9.20 (or other software, as indicated). The problems are categorized by the affected product area. If a problem has an assigned internal tracking number, that tracking number is provided (in parentheses) at the end of the problem description.

Dashboard

PROBLEM	Any PPM Center portlets that contain the word “program” do not display the new Chinese translation for “program” and instead display the old Chinese translation for “program”. (QCCR1L27636)
WORKAROUND	None.
PROBLEM	When the length of a word in a portlet name exceeds 30 characters (without a space), after you click Find Portlets in the Add Portlets window, the Portlet Name column in the resulting list is resized automatically, other columns are pushed to the right side, and no horizontal scrollbar is available. If the word is really long (say, 100 characters), the buttons in the right side of the window may disappear. (QCCR1L41717)
WORKAROUND	Maximize the Add Portlets window.
PROBLEM	When a request contains HTML related characters in its request description, the request is not displayed in the My Requests portlet. (QCCR1L42543)
WORKAROUND	Make sure not to include any HTML related characters in the description of a request.

HP Demand Management

PROBLEM	If the previous step is an execution step and the Processing Type is set to Immediate , the status dependencies, such as Clear, will not be triggered in the current step. It requires user interaction for these types of status dependencies. (QCCR1L12363).
WORKAROUND	None.
LIMITATION	PPM Center stores Request Header Type (RHT) fields in the KCRT_REQ_HEADER_DETAILS table, which has only 50 columns available. (QCCR1L13835)
WORKAROUND	None.
PROBLEM	After migration from PPM version 7.5 to 8.0, you log on to PPM Center and select German as the session language. On the Request Details page or the Search Requests page, you click the calendar icon and choose a date (short date). An error message pops up in German: "In the date field the wrong format is used and the request cannot be saved." (QCCR1L16011)
WORKAROUND	Change your current regional settings to German (Open > Administration > Edit My Profile > Regional Settings).
PROBLEM	If a request contains a rule that uses <code>KNTA_MULTI.Find_User_full_names ([SYS.USER_ID]) from sys.dual</code> , saving the request may fail or removing associated entities from the request may fail. (QCCR1L24349)
WORKAROUND	Use <code>KNTA_MULTI.Find_UserNames ([SYS.USER_ID]) from sys.dual</code> instead.
LIMITATION	When Text Field is set to "is equal to" the value of an Auto Complete List or Drop Down List value in the Dependencies section of the Rules tab in the request type workbench, the dependencies do not work; However, if the Text Field is set to match the code of the Auto Complete List or Drop Down List, the dependencies work well. (QCCR1L27020)
WORKAROUND	Considering the fact that Auto Complete List and/or Drop Down List values can be localized, which will then cause consistency issue for the dependencies, HP recommends you to match Text Field code to the code of Auto Complete List or Drop Down List when you set up request type field dependencies.
LIMITATION	A token unparseable error occurs when creating a request of a request type, where its validation referenced a non-existing token. (QCCR1L27418)

WORKAROUND	When you specify a validation for your request type, report type, or object type, make sure that the token(s) referenced by the validation already exist.
LIMITATION	If you have included too many items in the Request Type field or the Selected Columns list on the Search Requests page, an error might occur when you try to save your search preferences. (QCCR1L39090, QCCR1L47244)
WORKAROUND	Do not include too many items in the Request Types field or the Selected Columns list on the Search Requests page. For better performance, HP recommends that you limit the total size of the Request Types field and the Selected Columns list to 1500 characters.
LIMITATION	When applying advanced rules on requests with "Printable Version" and the Print function, the previewed and printed data does not match with what is displayed on the screen.
WORKAROUND	Now rules can be executed on the printable version of Request Details, but with the following limitations: <ul style="list-style-type: none"> • Only SQL rules and UI Rule <code>setFieldVisible()</code> will be executed. • Only Apply on page load rule event is supported. • The printable version should be opened from Request Details page instead of by entering the URL address directly. (QCCR1L39873)
LIMITATION	If a field is set to "Display = No" or invisible by status dependency, you can not make it visible on the web UI by using UI rules. (QCCR1L40010)
WORKAROUND	None.
LIMITATION	SQL for Hierarchical Display (tree validation) now supports resolving such static tokens as [SYS.USERNAME] and [SYS.USER_ID]. Other types of tokens, such as Request Details or Context related tokens, are not supported. (QCCR1L40379)
WORKAROUND	None available at this time.
LIMITATION	Auto-complete component's valid value list is not in client UI, so when using rule to set values for auto-complete component, the values are not validated and invalid values can be set. As a result, when users create a request, a value that is not in auto-complete list can be inserted and saved in an auto-complete field as triggered by the SQL rule. (QCCR1L41050)
WORKAROUND	PPM administrators who configure SQL rules to set values for auto-complete list should make sure that only valid values are set.

PROBLEM	After you enable field group Program Issue: Allows Requests to be considered as Issues In a Program for a request header type, no Program Issue section is added to the Fields tab of the request header type.(QCCR1L41722)
WORKAROUND	This behavior is by design and it has no functional impact. Request types using this request header type can still be used as program issue type and it works fine for program issue tracking.
LIMITATION	Rule dependency is not supported if the dependency field is using the () pattern to present negative numbers. For example, using (1000) to represent -1000. (QCCR1L42478)
WORKAROUND	None available at this time.
LIMITATION	An error occurs when performing Quick Edit or Mass Update on requests of non-PFM-Proposal request types that use PFM - Finish Period by Month validation. This is because the PFM - Finish Period by Month validation requires a field with token KNTA_PLAN_START_DATE for the SQL to be executed, while for most of non-PFM-Proposal request types, there is no such field. (QCCR1L43340)
WORKAROUND	Do not use PFM - Finish Period by Month validation for non-PFM-Proposal request types.
LIMITATION	When using a jump/receive workflow, you add a new package line to a package after you have submitted all the package lines and started the package workflow for any one of them. As a result, the package and the request are not in synchronization. (QCCR1L45417)
WORKAROUND	Add all package lines before you start the package workflow for any one of them.
PROBLEM	<p>(Sun Solaris only) You submit a request using the workflow whose initial step is an execution workflow step. The workflow cannot proceed to the next step and you see an error message similar to the follows on the Request Execution Log page:</p> <pre>The attachment file could not be downloaded. The file: REQ_XXXX/REQ_XXXX_BID_XXXXX.html no longer exists on the server...</pre> <p>This is due to a system limitation with Sun Solaris that one directory can only contain 32k 32768 sub-directories (maybe 64k 65536 in some versions). When PPM workflow in a request execute a command, it creates a folder for each request to log the execution information, so it may exceed the limitation if there are many requests that will execute a command in workflows. (QCCR1L47984)</p>

WORKAROUND	A task is added to the Directory Cleanup Service to delete the request log files periodically. The default value of the <code>WEB_FILE_CACHE_LIFETIME_IN_DAYS</code> server configuration parameter is 7. Therefore, request log files created 7 days ago are deleted. You can increase or decrease the server configuration parameter value as needed.
PROBLEM	When a request is created in a non-English-speaking region with a regional language other than English, users cannot receive email approval notifications. (QCCR1L48350)
WORKAROUND	Install Multilingual User Interface (MLU) in PPM Center.
PROBLEM	There is only one request on the last page of the Request List portlet on the Dashboard page. You open the request and cancel it. When you go back to the Dashboard page, you see no results from the Request List portlet. The portlet works again if you reopen the Dashboard page. (QCCR1L48445)
WORKAROUND	None.

Installation

LIMITATION	(AIX system only) When you perform upgrade on AIX system, if you choose a double-type language (for example, Simplified Chinese, Korean, or Japanese), and you use MobaXterm as client side tool to connect to AIX, you may experience the issue that some labels names are not shown as well as an upgrade error. (QCCR1L49613)
WORKAROUND	To resolve the issue, clear data from the <code>KINS_ACTIONS</code> table, and retry the step where you got an upgrade error earlier.

Platform

LIMITATION	When there is no shared folder in a cluster for the <code>server.conf</code> file, changes made to the server configuration parameters through Admin Console when logged into a specific node in the cluster are not propagated to the <code>server.conf</code> file in other nodes. (QCCR1L45580)
WORKAROUND	There are two workarounds: <ul style="list-style-type: none">• Make sure you make changes to server configuration parameters for each node in the cluster manually. Or,• Create a shared folder for the <code>server.conf</code> file to give all nodes in the cluster access to the same <code>server.conf</code> file.
LIMITATION	You may encounter an error when opening a subworkflow in Graphical View: <code>java.io.IOException: too many colors for a GIF</code> (QCCR1L48353)
WORKAROUND	Do the following: <ol style="list-style-type: none">1. Set the <code>com.kintana.core.server.LOW_COLOR_WF_IMAGE</code> parameter to <code>true</code> in <code>server.conf</code>.2. Go to the <code><PPM_Home>/bin</code> directory and run the following command: <code>sh ./kUpdateHtml.sh</code>3. Restart PPM server.

Platform - Workbench

PROBLEM	You may experience problem when trying to export large workflow diagram from PPM Workbench.
WORKAROUND	If you open PPM Workbench by clicking Open > Administration > Open Workbench , you may need to increase your heap size from Java Plug-in in order to export large workflow diagram from PPM Workbench. To do so, <ol style="list-style-type: none">1. On Windows platform, click Start > Control Panel > Java Plug-in.2. In the Java Control Panel dialog, select the Java tab, and click View under Java Applet Runtime Settings.3. Find the most recent Version Java runtime line, double click in the Java Runtime Parameters field and add <code>-Xmx<heap_size>m</code>. <code><heap_size></code> shall be a number appropriate to your system. For example, <code>-Xmx300m</code>, that is, setting Java maximum heap size to 300 MB.4. Click OK. Note: Make sure you exit all web browser windows.

LIMITATION	When users open PPM Workbench in 64-bit Internet Explorer by clicking Open > Administration > Open Workbench , they are prompted to install Java plug-in 1.7.0. After installing the Java Plug-in by following the screen instructions, they still receive prompt asking them to install Java plug-in 1.7.0.
WORKAROUND	Oracle provides automatic installation kit for 32-bit Java Plug-in 1.7.0 only. To install the 64-bit Java plug-in 1.7.0, go to Oracle website, manually download and install the 64-bit Java plug-in 1.7.0.

HP Deployment Management

PROBLEM	Transfer of bundle to Destination environment fails as the ksc_copy command is not working for the Request Type Migrator. (QCCR1L40858)
WORKAROUND	Set variable <code>DISABLE_SCP_FILENAME_QUOTE</code> in the Environment User Data. For details, see WORKAROUND on page 16 for QCCR1L24976

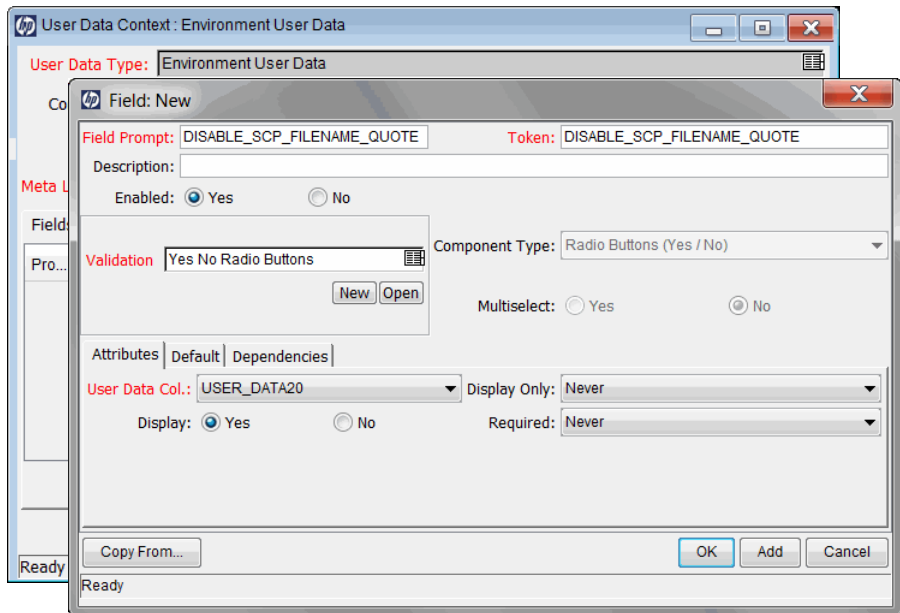
PROBLEM

File transfer from source environment to destination environment using Reflection for Secure IT for Unix (version 7.1) server fails when the environments were configured in a workflow execution step. (QCCR1L24976)

WORKAROUND

To use Reflection for Secure IT for Unix server to transfer files successfully,

1. Create a new Environment User Data using the following values:
 - **Field Prompt:** `DISABLE_SCP_FILENAME_QUOTE`
 - **Token:** `DISABLE_SCP_FILENAME_QUOTE`
 - **Enabled:** Yes
 - **Validation:** Yes No Radio Buttons
 - **User Data Column:** Select a value from the drop down list.
 - **Display:** Yes
 - **Display Only:** Never
 - **Required:** Never



Then, in the Environment you want to use, enable the newly created user data.

For more information about creating and enabling user data, see the *HP Deployment Management Configuration Guide*.

2. Note down the Server environment and Client environment values you used in [step 1](#).
3. Configure the workflow execution step and use the Server environment and Client environment values you noted down earlier for **Source Environment** and **Dest Environment** fields.

PROBLEM	If you used environment tokens in Object Type with special command <code>ksc_copy_server_server</code> and set the Source and Destination environments as its parameters, file transfer from source environment to destination environment with Reflection for Secure IT for Unix (version 7.1) server fails. (QCCR1L27758)
WORKAROUND	Modify the environment settings by following the instructions described in the WORKAROUND for QCCR1L24976.

Integrations

Integration with Quality Center (ALM)

LIMITATION	Integration fails when QC/ALM project names contain non-Latin characters (for example, Russian). (QCCR1L47799)
WORKAROUND	Use latin characters only for QC/ALM project names. The QC/ALM RESTful API does not support non-latin characters.
PROBLEM	(Integration with Quality Center version 10.00 only) After upgrading PPM Center to version 9.20, if you reload the “QC/ALM Defect Information” field group (it is Quality Center Defect Information in PPM Center version 9.14 or earlier) in a Request Header Type of a request type (by unchecking the field group first and then checking it again), and create a defect in Quality Center to create a new request in PPM Center, errors may occur. (QCCR1L46633)
WORKAROUND	Modify the Request Header Type by restoring the layout of the field group fields on the Layout tab to the default. For example, make sure that QC/ALM Instance the first field, QC/ALM Domain the second, QC/ALM Project the third, and so on.
LIMITATION	Cannot synchronize status of defects or requirements from Quality Center 10.00 or HP ALM 11.x when the value of the status in QC or HP ALM is in a non-English language, for example, Chinese. (QCCR1L47995)
WORKAROUND	None.

PROBLEM	Status update on requests with the integration between HP ALM version 11.00 and PPM Center version 9.14 (configured with the out-of-the-box workflows) fails. (QCCR1L47551)
WORKAROUND	<p>The out-of-the-box ALM - Request for Change workflow included in the ALM bundle is provided as template to minimize your workflow creation effort. To use the out-of-the-box workflow template, make sure you do the following:</p> <ol style="list-style-type: none"> 1. Modify the ALM - Request for Change workflow template by adding the following two request statuses to appropriate workflow steps: <ul style="list-style-type: none"> — 3-Test Lab Setup Completed — 5-Test Execution Completed <p>If the two request statuses do not exist, go to the Request Type Workbench and add them to applicable RFC request types. For detailed instructions, see the <i>HP Demand Management Configuration Guide</i>.</p> 2. Add necessary access grants and user groups to each of the modified steps.

Integrations — Documentum

PROBLEM	<p>Upgrading PPM Center integration with Documentum fails with the following exception if a user in the PPM Center table KNTA_USERS (in the Username column) has the same name as the Documentum super user that you use to perform the upgrade:</p> <pre>com.kintana.dms.server.tools.DocumentumIntegration:2012/05/09-11:07:23.632: CREATE_ITG_DOC_TYPE_STEP-20: Object Type existed. We are not dropping this object type. com.kintana.dms.server.tools.DocumentumIntegration:2012/05/09-11:07:40.961: DEMOTE_SUPER_USER_STEP-30: [DM_QUERY_E_BAD_GROUP_SAVE]error: "CREATE or ALTER GROUP: Unable to save the group." DfException:: THREAD: Thread-33; MSG: [DM_QUERY_E_BAD_GROUP_SAVE]error: "CREATE or ALTER GROUP: Unable to save the group."; ERRORCODE: 100; NEXT: DfException:: THREAD: Thread-33; MSG: [DM_GROUP_E_INSUFFICIENT_ PRIVILEGE]error: "The current user has insufficient privileges to save or destroy the docu group object."; ERRORCODE: 100; NEXT: null ... (QCCR1L46926, QCCR1L47440)</pre>
WORKAROUND	<p>If you want to use the Documentum super user account to perform the upgrade,</p> <ol style="list-style-type: none"> 1. Rename the user name in the PPM Center table KNTA_USERS before the upgrade. 2. Grant Super User privilege to the Documentum super user account manually. 3. Run <code>kConfig.sh</code> to upgrade Documentum DMS again. 4. After the upgrade, you can change the PPM Center user name in the KNTA_USERS table back to the original one. <p>Note: Make sure you migrate your Documentum-based DMS to a supported DMS on PPM Center version 9.14, then you can upgrade PPM Center to version 9.20.</p>

HP Program Management

PROBLEM	Program risk request types are not available.
WORKAROUND	Program risk request types are part of the Best Practices content. Best Practices must be installed/re-installed in order to use this content.

HP Project Management

PROBLEM	When exporting a work plan to both PDF and Excel, if the work plan has a task with a name that contains double-byte numbers, the exported PDF differs from the exported Excel. In the exported PDF, the task name does not contain the doublebyte numbers. (QCCR1L14109)
WORKAROUND	None.
PROBLEM	If a user edits a task's external predecessor from the work plan page, when the task is saved, the external predecessor is deleted. (QCCR1L27616)
WORKAROUND	Use the Task Details page to edit a task's external predecessors. Do not edit external predecessors from the work plan page.
PROBLEM	When installing the Plug-in for PPM for all users, the installation finishes but the HP PPM Center menu is not visible in Microsoft Project. This is because Microsoft Office 2007 Hotfix 976811 only supports operating systems Windows Vista and Windows XP. (QCCR1L39188)
WORKAROUND	Install the Plug-in for PPM for current user only.
PROBLEM	When exporting a financial summary to an Excel file, the data format in Excel differs from that in PPM Center. (QCCR1L44632)
WORKAROUND	Change the regional settings of your operating system from the Control Panel, so that they are the same as your current regional settings set on the Regional Settings tab of the Edit My Profile page (Open > Administration > Edit My Profile > Regional Settings).

Multilingual User Interface (MLU)

PROBLEM	When deploying language packs, the logs will show the following error for all languages, except for the system language: [java] java.sql.SQLIntegrityConstraintViolationException: ORA-02291: Integrity-Constraint (GEEK_01.KNTA_NOTIFICATIONS_ LOC_FK) violated This error has no functional impact. (QCCR1L27539).
WORKAROUND	None.

HP Portfolio Management

LIMITATION	The <code>COST_CAPITALIZATION_ENABLED</code> <code>server.conf</code> parameter cannot be changed using the Administration Console. (QCCR1L41323)
WORKAROUND	The flag can be changed directly in the <code>server.conf</code> parameters as needed. However, HP strongly recommends not disabling cost capitalization if it has been enabled.
PROBLEM	Transaction History and Notes History cannot be enabled in the Associated Programs field of a PFM - Asset, PFM - Project, or PFM - Proposal request header type or a copy of one of these request header types. Selecting Yes or No does not enable these auditing features. (QCCR1L26865)
WORKAROUND	None

HP Resource Management

PROBLEM	Data display format inconsistency between the staffing profile page and the Analyze Assignment Load portlet: the staffing profile page displays data by hours in the format of one decimal place, while the Analyze Assignment Load portlet displays data in the format of two decimal places.
WORKAROUND	None.

HP Time Management

PROBLEM	You may get the following session error while trying to open a time sheet using the hyperlink on the spreadsheet created from the Approve Time Sheet portlet. Your session has timed out due to inactivity. Any unsaved changes have been lost. Please reload the Time Sheet to continue with your changes. (QCCR1L45610)
WORKAROUND	To fix the issue, use the workaround provided by Microsoft: http://support.microsoft.com/kb/218153

