

# BSA Essentials

Version: 9.1x and 9.20

## Importing SAP® BusinessObjects Enterprise™ Reports into BSA Essentials

---

Document Release Date: November, 2012

Software Release Date: 2012



# Contents

- Introduction ..... 3
  - Audience ..... 3
  - Prerequisites ..... 3
    - Software Requirements ..... 3
    - Documentation Requirements ..... 4
    - Pre-Import Setup Steps ..... 4
- Internal Import ..... 5
  - Importing Reports Procedure ..... 5
  - Moving Reports ..... 10
- External Import ..... 11
  - Creating Files ..... 11
  - Configuring the Systems ..... 12
  - External Import Procedure ..... 12
- Troubleshooting ..... 15
- Additional Information ..... 16

---

## Introduction

This white paper describes how to import a BusinessObjects Enterprise™ report into BSA Essentials (BSAE) from another BSAE installation. Most commonly, you would import a report prepared in a development environment to a production environment.

There are two basic import scenarios for reports: internal imports and external imports. In both cases, the source and destination BSAE systems have the same configuration. However, in external imports, the source and destination systems are located behind different firewalls.

**Disclaimer:** BusinessObjects Enterprise™, a third-party product embedded in BSAE, and its tools, are subject to change without notice.

## Audience

The target audience for this white paper is HP Support, HP Software Professional Services, and the BusinessObjects Enterprise™ administrator at the customer site. Basic knowledge of BusinessObjects Enterprise™ is required.

## Prerequisites

This section discusses actions you should take or information you should know before you begin importing your reports.

## Software Requirements

This section discusses software requirements that must be in place before you import.

Software and Version	System (Source or Destination)	Import (Internal or External)	Location
BSAE universes (BSAE – April 2012 content)	Both	Both	Content Catalog – see <a href="#">Live Network portal</a> for BSAE
BusinessObjects Enterprise Client Tools for Business Objects XI 3.1 (previously installed on a PC and able to access both source and destination BSAE systems)	Both	Internal	SAP site
BusinessObjects software already installed with BSAE	Both	External	BSAE installation folders
Import Wizard  (It is part of the BO tools and is installed with them.)			Stand-alone PC

## Documentation Requirements

This section describes documents that you might find helpful to review before you import your reports.

Document	Location	Content
BusinessObjects Enterprise XI 3.1 Import Wizard Guide	Installed with BusinessObjects Enterprise Client Tools	How to use the BusinessObjects Import Wizard
BusinessObjects Enterprise Administrator's Guide	Installed with BSAE Found in: <code>/opt/HP/BSAE/manuals/BusinessObjects/admin_guide.pdf</code>	Importing BusinessObjects reports using command-line techniques

## Pre-Import Setup Steps

This section discusses other steps that you should follow before you import your reports.

Step	Import (Internal or External)	System (Source or Destination)	Information
Create a transfer folder with a unique name (for example, XFER) on the source system	Both	The transfer folder will be imported during the import process.	To eliminate naming conflicts, make sure that there is no folder with the same name on the destination system.
Transfer the reports to be imported to the transfer folder	Both	The reports in the transfer folder will be imported during the import process.	Both source and destination reports should have unique names

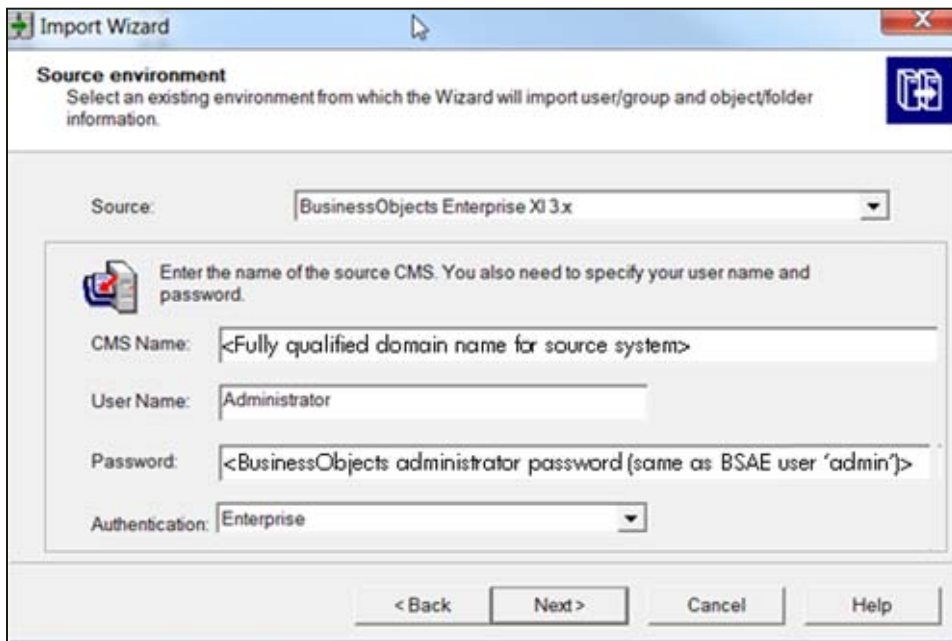
## Internal Import

Use the following procedure to import reports between systems that are behind the *same* firewall. Be sure to review the [Prerequisites](#) section before you begin an internal import.

### Importing Reports Procedure

**Note:** In these screens, the '<...>' symbols indicate customer-specific values that you must enter. Simple text in the fields indicate exact values that you must enter.

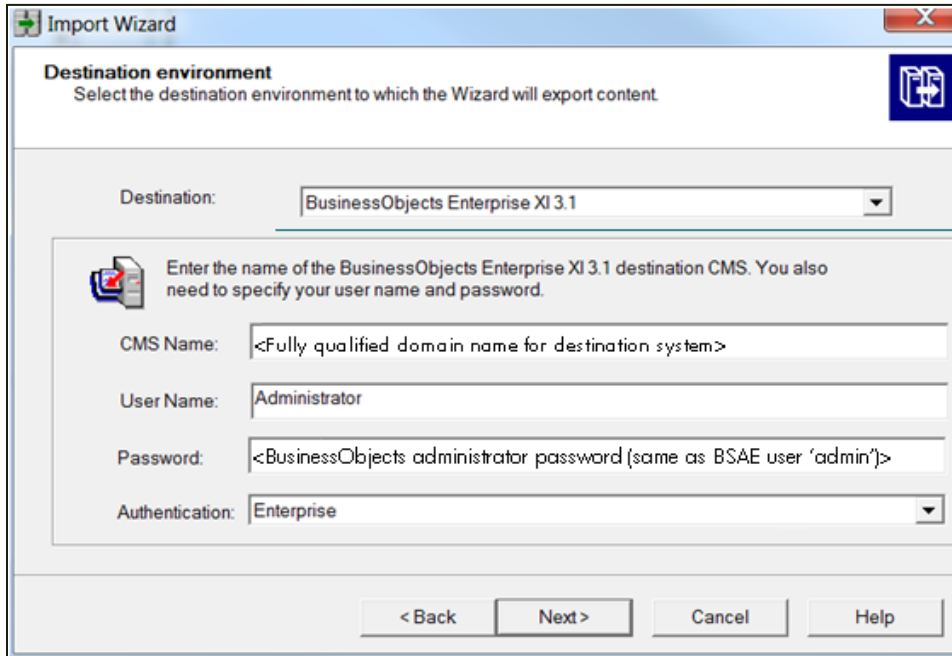
1. Choose Start > Import Wizard to display the Welcome to the Import Wizard screen. You do not need to enter any information on this screen.
2. Click Next.  
The Source Environment screen is displayed.



Enter the values as shown:

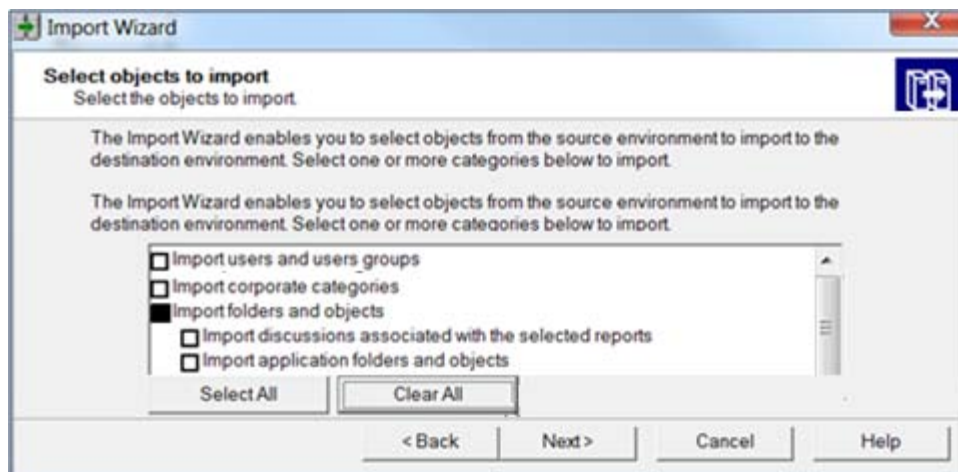
- a) Source: BusinessObjects Enterprise XI 3.x
- b) CMS Name –<Fully qualified domain name for your source system>
- c) User Name: Administrator
- d) Password: <BusinessObjects administrator password> (BSAE user 'admin')
- e) Authentication: Enterprise

3. Click Next.  
The Destination Environment screen is displayed.



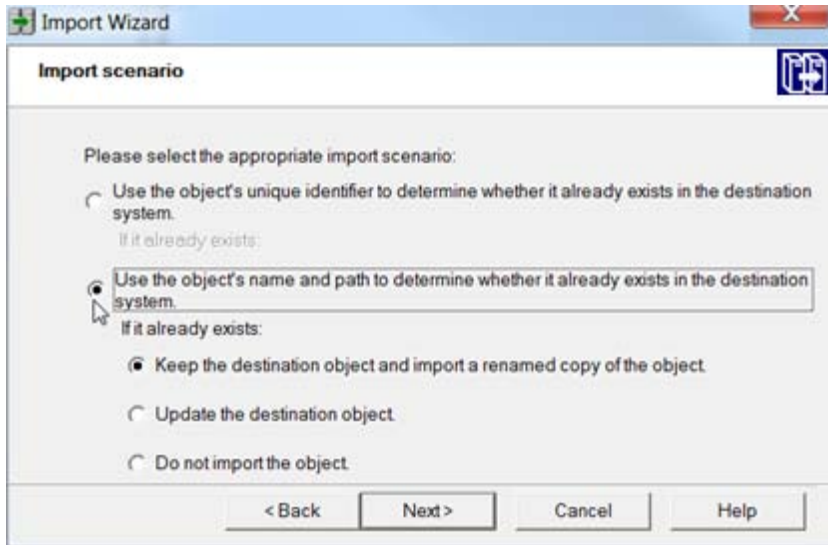
Enter the values as shown:

- a) Destination: BusinessObjects Enterprise XI 3.1
  - b) CMS Name –<Fully qualified domain name for your destination system>
  - c) User Name: Administrator
  - d) Password: <BusinessObjects administrator password> (same as BSAE user ‘admin’)
  - e) Authentication: Enterprise
4. Click Next.  
The Select Objects to Import screen is displayed.

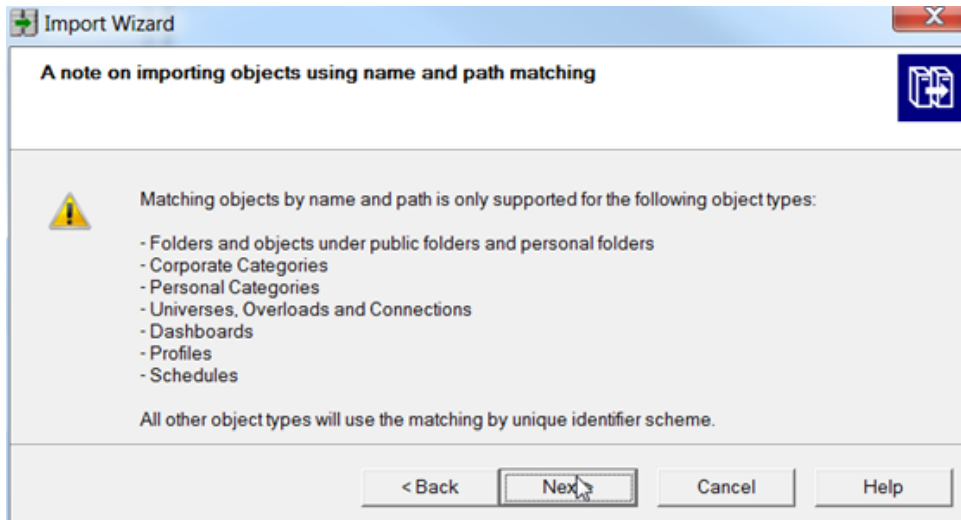


5. In this screen:
  - a. Click Clear All.
  - b. Select Import folders and objects. Do *not* select “Import discussions associated with the selected reports” and “Import application folders and objects”.
  - c. Selecting any additional objects can corrupt the BusinessObjects installation on the destination system.

6. Click Next.  
A warning appears if you do not choose to import universes.
7. Click Next.  
The Import Scenario screen is displayed.

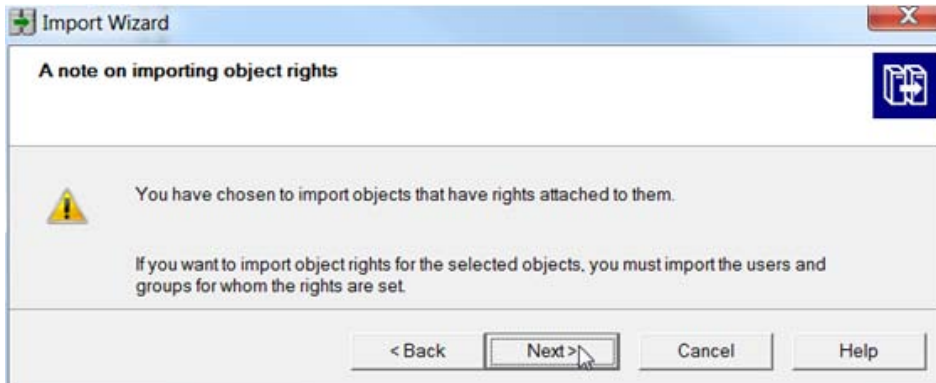


8. Select both of the following choices:
  - a. Use the object's name and path to determine whether it already exists in the destination system.
  - b. Keep the destination object and import a renamed copy of the object.
9. Click Next.  
A note on importing objects is displayed:



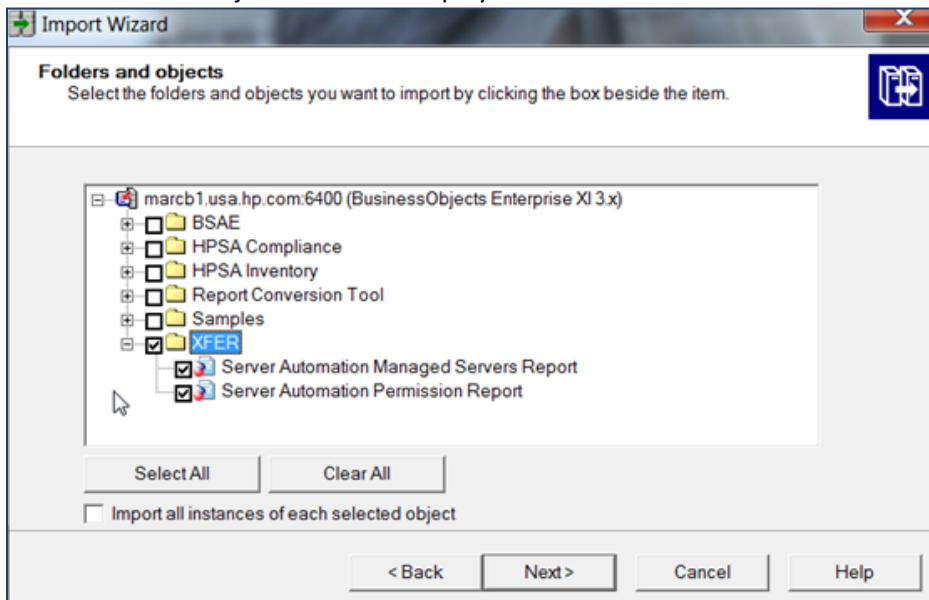
10. Click Next.

If your objects have rights attached to them, the following screen is displayed:



11. Click Next.

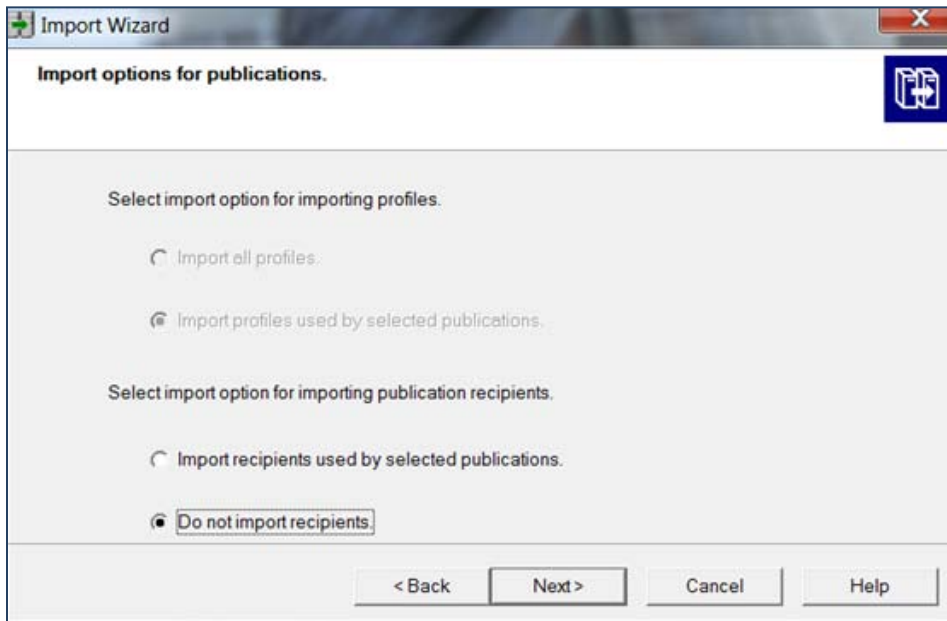
The Folders and Objects screen is displayed.



12. Select the reports to import, as well as the folders containing those reports.

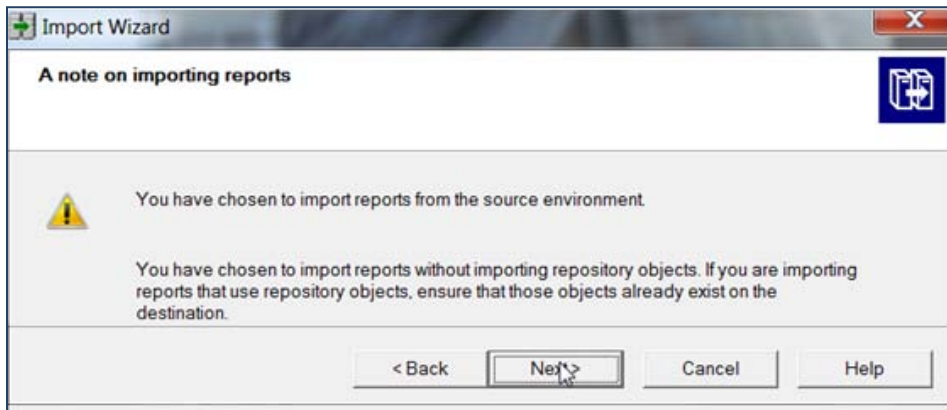


13. Click Next.  
The Import Options for Publications screen is displayed.

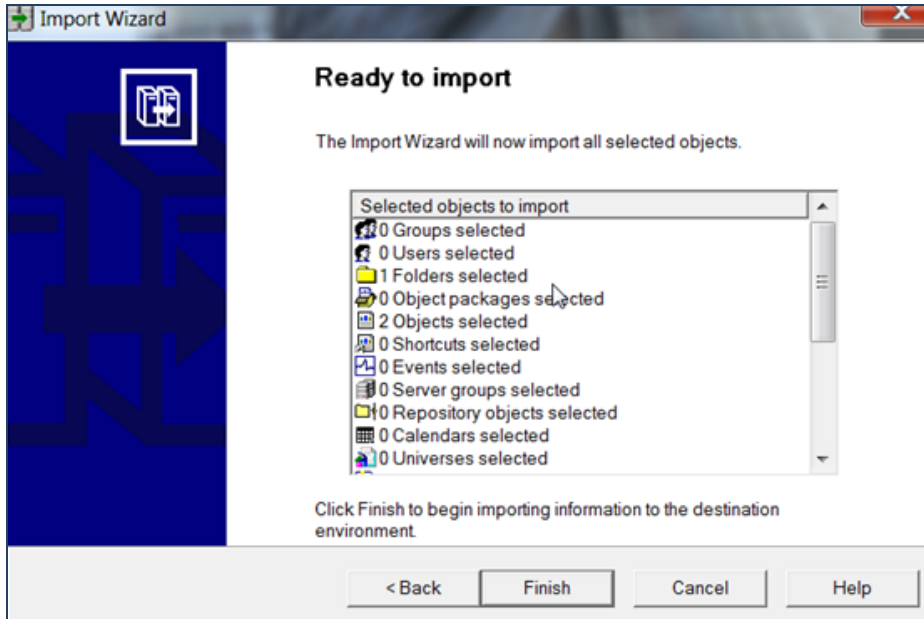


Choose the Do Not Import Recipients option.

14. If you imported reports without also importing repository objects, the following message is displayed:

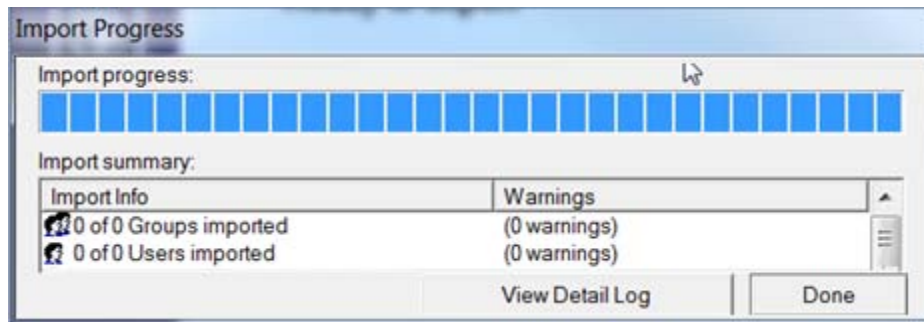


15. Click Next.  
The Ready to Import screen is displayed.



Click Finish, or click Back to reenter the information.

16. The Import Progress screen is displayed.



When the import is complete, click Done.

## Moving Reports

1. Move the reports from the transfer folder to the destination folder:
  - a. Open the transfer folder in the destination system.
  - b. Right-click on a report.
  - c. Choose Organize > cut.
  - d. Right-click the destination folder in the destination system.
  - e. Choose Organize > paste.
2. When you have transferred all the reports:
  - a. Right-click the transfer folder.
  - b. Choose Organize > delete.

## External Import

Use the procedures in this section to import reports between systems that are behind *different* firewalls, and where the source and destination systems cannot be connected to simultaneously.

Be sure to review the Prerequisites section before you begin an external import.

### Creating Files

Create the following files and add the contents, as shown.

➤ `export.properties` file

- Purpose: Supplies required arguments for external process
- Location: Source system (`/var/tmp/export.properties`)
- Content to add:

```
action=exportXML
exportBiarLocation=/var/tmp/reports.biar
userName=Administrator
password=<BO Administrator password>
CMS=<fully qualified domain name of source system>:6400
authentication=secEnterprise
exportDependencies=false
includeSecurity=false
exportQuery1=select * from ci_Infoobjects where si_name = '<Your report name>' and
si_kind = 'Webi'
exportQuery2=select * from ci_Infoobjects where si_name = 'XFER' and si_kind =
'Folder'
exportQueriesTotal=2
```

Where:

- `<BO Administrator password>` is the BSAE 'admin' user password
- `exportQuery1` is the line for your first report, `exportQuery2` is the line for your second report, and so on, each on one line. Remove any unused lines.
- `<Your report name>` is the name of the report
- `Webi` is BusinessObjects terminology for a Web Intelligence Document. All reports are Web Intelligence documents.
- `exportQueriesTotal` must equal the total number of reports
- `exportQuery1=select * from ci_Infoobjects where si_kind = 'Webi'` exports all the reports

➤ `import.properties` file

- Purpose: Supplies required arguments for the import process.
- Location: Destination system (`/var/tmp/import.properties`)
- Content to add:

```
action=importXML
importBiarLocation=/var/tmp/reports.biar
userName=Administrator
password=<BO Administrator password>
CMS=<fully qualified domain name of source system>:6400
authentication=secEnterprise
includeSecurity=false
```

Where:

- `<BO Administrator password>` is the BSAE 'admin' user password

## Configuring the Systems

In separate command windows in both the source and destination systems:

1. Log in as root.
2. Issue the following two commands:
  - `cd /opt/opsware/omdb/components/biarimporter`
  - `ln -s /opt/opsware/omdb/components/biarimporter external`

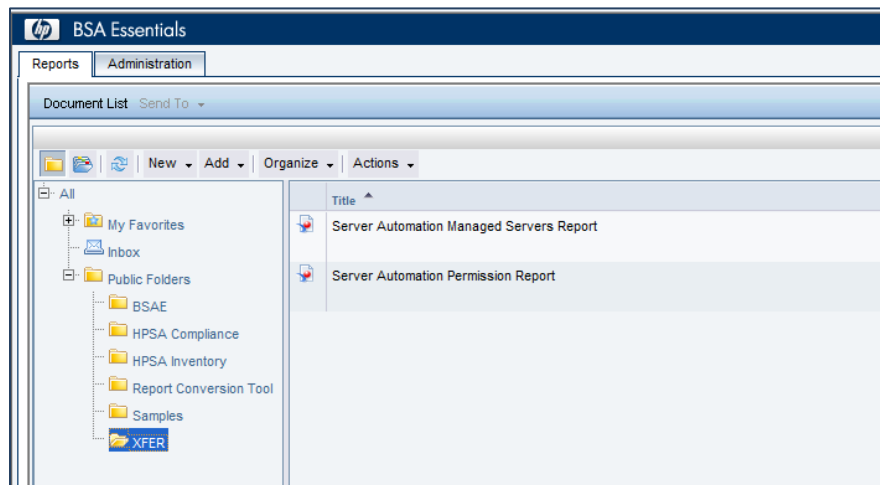
## External Import Procedure

Perform the steps in the following sections *before* you start this procedure:

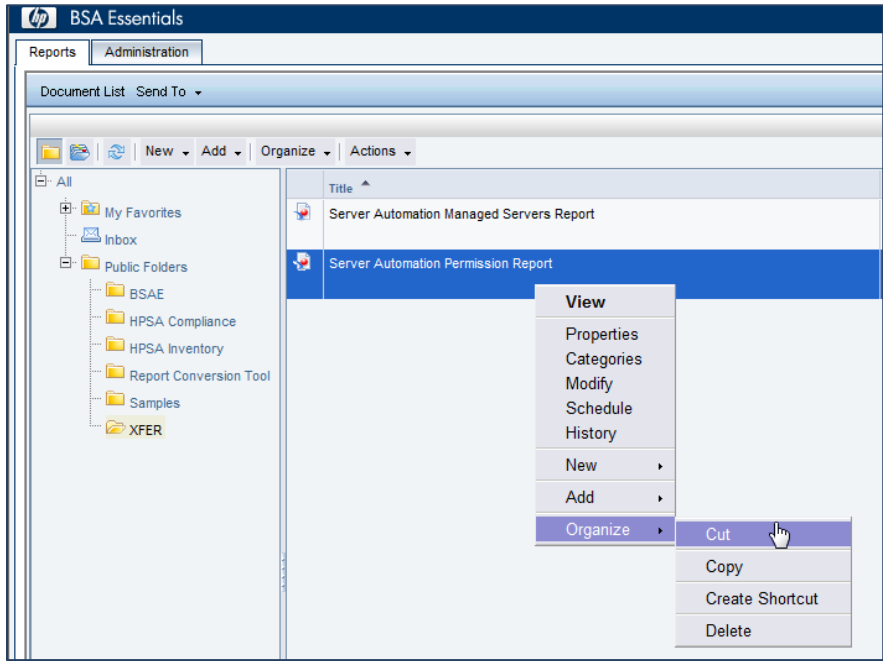
- Prerequisites section
- Creating Files and Configuring the Systems

To perform the import:

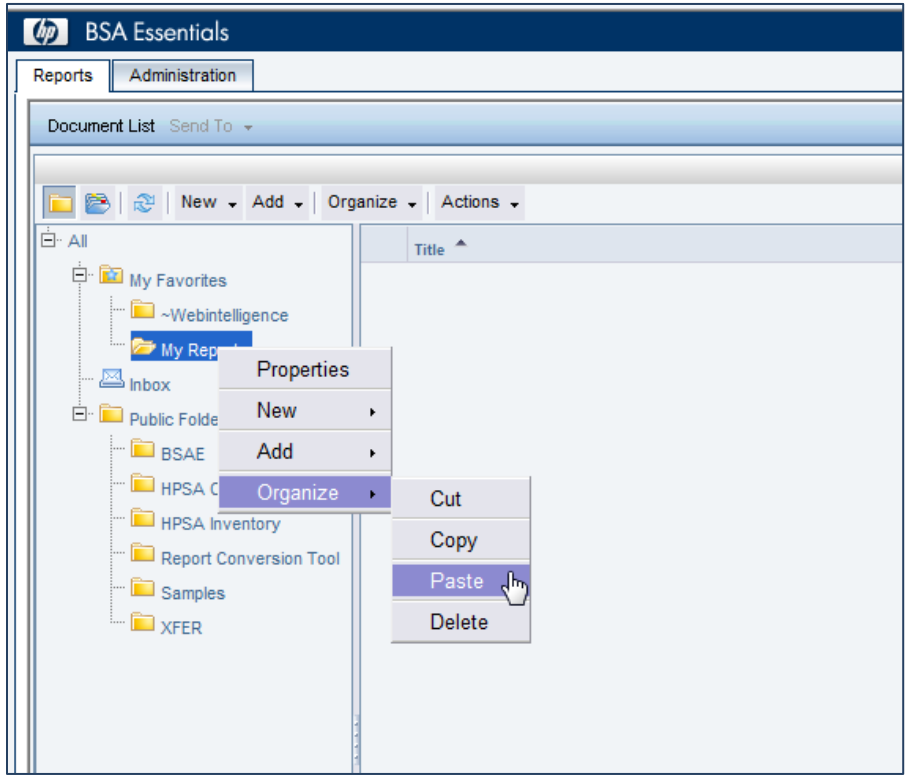
1. On the source system, open a command window and enter the following command, all in one line:  
`/opt/opsware/jdk1.6/jre/bin/java -jar /opt/opsware/omdb/components/biarimporter/biengine.jar /var/tmp/export.properties`  
This export process creates the BIAR file (`/var/tmp/reports.biar`), which contains the reports. The `export.properties` file created above specified the location of this file.
2. Use a copy mechanism of your choice to copy the BIAR file across the firewall (or 'air-gapped' configuration) into your source system.
3. On the destination system, open a command window and run the following command (must be all on one line):  
`/opt/opsware/jdk1.6/jre/bin/java -jar /opt/opsware/omdb/components/biarimporter/biengine.jar /var/tmp/import.properties`
4. Using the BSAE Web Client interface, move the reports into the destination folder:
  - a. Open the transfer folder.



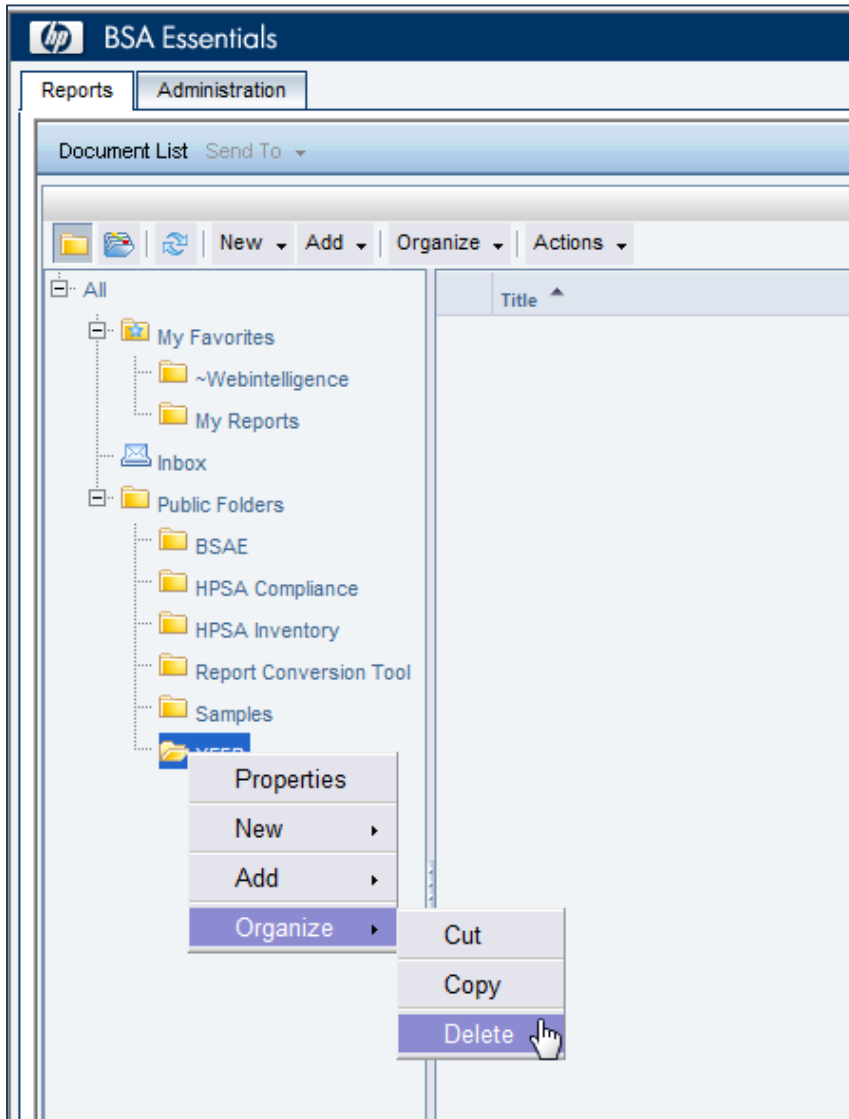
- b. Right-click a report and choose Organize > Cut.



- c. Right-click the destination folder.  
d. Choose Organize > Paste.



5. Delete the folder:
  - a. Right-click the folder.
  - b. Choose Organize > Delete.



## Troubleshooting

The following table describes error messages you might see if your import/export fails:

Error Message	Description	Resolution
Could not commit object 'BSAE' of type 'Folder' because another object with the same name already exists under object 'Root Folder'. (FWB 00026)	Folders with the same name exist on both the source and the destination.	Change one folder's name, make the necessary adjustments in the import/export commands, and rerun the import/export process.
The property list(s) 'SI_ADM_ADD_USERGROUPS_TO_USER, SI_ADM_ADD_USERGROUPS_TO_USER' committed on the object named '' with id number 1709 contained reference(s) to non-existent object(s) with id number(s) 1679, 1679	Dependencies were included with the export reports, resulting in dependencies on the Universe objects. By specifying the same starting universes in the software requirements, the objects already exist in the destination. However, the objects exist with different unique identifiers.	Including dependencies can cause errors because the identifiers will not be the same between the two systems, even if named the same.  Do not include dependencies during export from the source system.
Required dependencies not found on target system: '[FhVMtE5JmwUAJiUAAJDLm1oAAAwppqJ0U]'	Folders with the same name exist on both the source and the destination, and no folder is specified in the export query in the export.properties file.  The command-line import requires that identifiers have a unique number, but these identifiers cannot have the same name.	Change one folder's name, add the correct folder to the export command, make the necessary adjustments in the import/export commands, and rerun the import/export process.



## Additional Information

In this section:

- [Legal Notices](#)
- [Documentation Updates](#)
- [Support](#)

### Legal Notices

#### Warranty

The only warranties for HP products and services are set forth in the express warranty statements accompanying such products and services. Nothing herein should be construed as constituting an additional warranty. HP shall not be liable for technical or editorial errors or omissions contained herein.

The information contained herein is subject to change without notice.

#### Restricted Rights Legend

Confidential computer software. Valid license from HP required for possession, use or copying. Consistent with FAR 12.211 and 12.212, Commercial Computer Software, Computer Software Documentation, and Technical Data for Commercial Items are licensed to the U.S. Government under vendor's standard commercial license.

#### Copyright Notices

© Copyright 2000-2012 Hewlett-Packard Development Company, L.P.

#### Trademark Notices

Adobe® is a trademark of Adobe Systems Incorporated.

Intel® and Itanium® are trademarks of Intel Corporation in the U.S. and other countries.

Microsoft®, Windows®, Windows® XP are U.S. registered trademarks of Microsoft Corporation.

Oracle and Java are registered trademarks of Oracle and/or its affiliates.

UNIX® is a registered trademark of The Open Group.

### Documentation Updates

The title page of this document contains the following identifying information:

- Software Version number, which indicates the software version.
- Document Release Date, which changes each time the document is updated.
- Software Release Date, which indicates the release date of this version of the software.

To check for recent updates or to verify that you are using the most recent edition of a document, go to:

<http://support.openview.hp.com/selfsolve/manuals>

This site requires that you register for an HP Passport and sign in. To register for an HP Passport ID, go to:

<http://h20229.www2.hp.com/passport-registration.html>, or click the **New users – please register** link on the HP Passport login page.

You can also receive updated or new editions if you subscribe to the appropriate product support service. Contact your HP sales representative for details.



## *Support*

Visit the HP Software Support Online web site at: <http://support.openview.hp.com/>

This web site provides contact information and details about the products, services, and support that HP Software offers. HP Software online support provides customer self-solve capabilities. It provides a fast and efficient way to access interactive technical support tools needed to manage your business.

As a valued support customer, you can benefit by using the support web site to:

- Search for knowledge documents of interest
- Submit and track support cases and enhancement requests
- Download software patches
- Manage support contracts
- Look up HP support contacts
- Review information about available services
- Enter into discussions with other software customers
- Research and register for software training

Most of the support areas require that you register as an HP Passport user and sign in. Many also require a support contract.

- To register for an HP Passport ID, go to: <http://h20229.www2.hp.com/passport-registration.html>
- To find more information about access levels, go to: [http://support.openview.hp.com/access\\_level.jsp](http://support.openview.hp.com/access_level.jsp)

## *Support Matrices*

For complete support and compatibility information, see the support matrix for the relevant product release. All support matrices and product manuals are available here on the HP Software Support Online web site:

[http://support.openview.hp.com/sc/support\\_matrices.jsp](http://support.openview.hp.com/sc/support_matrices.jsp)

You can also download the HP Server Automation Support and Compatibility Matrix for this release from the HP Software Support Online Product Manuals web site:

<http://support.openview.hp.com/selfsolve/manuals>

