
HP Service Quality Management Solution



TeMIP Service Adapter V3.1 Installation, Configuration and User's Guide

Edition: 3.1

for Microsoft Windows and Linux Operating System

Sep 2012

© Copyright 2012 Hewlett-Packard Company, L.P.

Legal Notices

Warranty

The information contained herein is subject to change without notice. The only warranties for HP products and services are set forth in the express warranty statements accompanying such products and services. Nothing herein should be construed as constituting an additional warranty. HP shall not be liable for technical or editorial errors or omissions contained herein.

License requirement and U.S. Government legend

Confidential computer software. Valid license from HP required for possession, use or copying. Consistent with FAR 12.211 and 12.212, Commercial Computer Software, Computer Software Documentation, and Technical Data for Commercial Items are licensed to the U.S. Government under vendor's standard commercial license.

Copyright notices

© Copyright 2012 Hewlett-Packard Development Company, L.P.

Trademark notices

Java is registered trademark of Oracle and/or its affiliates.

Microsoft and Windows are U.S. registered trademarks of Microsoft Corporation.

Contents

Chapter 1	7
Introduction	7
1.1 TeMIP Service Adapter Overview	7
1.2 Data Collection	8
Chapter 2	9
TeMIP Service Adapter installation	9
2.1 Pre-requisites	9
2.1.1 Hardware pre-requisites	9
2.1.2 Software pre-requisites	9
2.1.3 Configuration pre-requisites	10
2.2 Code Signing	11
2.3 The TeMIP Service Adapter installation	11
2.3.1 Setting on SiteScope before installation	11
2.3.2 Steps to install the TeMIP Service Adapter on a windows platform	12
2.3.3 Install the TeMIP Service Adapter on a Linux platform	16
2.3.3.1 Steps to install the TeMIP Service Adapter on Linux in graphic mode	16
2.3.3.2 Steps to install the TeMIP Service Adapter on Linux in console mode	21
2.3.4 Post Installation Verification	25
2.4 The TeMIP Service Adapter un-installation on a windows platform	28
2.5 The TeMIP Service Adapter un-installation on a Linux platform	31
Chapter 3	34
TeMIP Service Adapter Configuration	34
Chapter 4	35
TeMIP Service Adapter operation	35
4.1 Start/Stop Service Adapter	35
Chapter 5	36
TeMIP Service Adapter troubleshooting	36
5.1 Problem encountered during installation	36
5.2 Problem encountered during operation	36

Preface

This document provides reference information to help install and configure the TeMIP Service Adapter.

The TeMIP Service Adapter is a mandatory software component to make TeMIP Service Console solution working properly.

This document only describes the TeMIP Service Adapter, Please refer to TeMIP Service Console related documents for more information.

Intended Audience

This document is intended for Solution Architects, TSC/SQM Solution deployment team and TSC/SQM Solution administrators.

Software version

Name	Version	Operating System	Description
<i>TeMIP Service Adapter</i>	3.1.0	Windows 2003 Server Windows 2008 Server Red Hat Enterprise Linux 5.5	SQM Service Adapter for TeMIP

Abbreviations and Acronyms

The following table defines abbreviations and acronyms used in this document.

Abbreviation or acronym	Meaning
<i>BSM</i>	HP Business Service Management
<i>BSM Entity Loader</i>	HP TeMIP to BSM Entity Loader
<i>BAF</i>	HP TeMIP to BSM Alarm Forwarder
<i>CMDB</i>	Configuration Management DataBase
<i>DDM</i>	Discovery and Dependency Mapping
<i>DDP</i>	HP SQM Generic Discovery and Dataload pack
<i>KPI</i>	Key Performance Indicator
<i>HI</i>	Health Indicator
<i>SA</i>	Service Adapter
<i>MA</i>	Monitoring Adapter
<i>SiS</i>	HP SiteScope
<i>SQM</i>	HP Service Quality Manager
<i>SMF</i>	Service Management Foundation
<i>TeMIP</i>	HP Telecommunication Management Platform
<i>TSC</i>	HP TeMIP Service Console

Associated documents

The following documents contain useful reference information:

- *The TeMIP Service Console Installation & Configuration Guide.*
- *HP SiteScope Deployment Guide*
- *Using SiteScope*
- *HP SQM Solution TeMIP Service Adapter Release Notes.*

The HP Business Service Management and SiteScope documents are available at:

<http://support.openview.hp.com/selfsolve/manuals>

Additional SQM Solution materials (like the SQM Solution product briefs) and information about SQM Solution updates are available at:

<http://www.hp.com/cms>

→ Section "Next Generation Operations Support System Solutions"

→ Section "Assurance"

→ Section "HP Service Quality Management Solution"

→ Section "Learn More"

Support

You can visit the HP Software support web site at:

<http://support.openview.hp.com/support.jsp>

HP Software online software support provides customer self-solving capabilities. It provides a fast and efficient way to access interactive technical support tools needed to manage your business. As a valued support customer, you can benefit by using the support site to:

- Search for knowledge documents of interest
- Submit enhancement requests online
- Download software patches
- Submit and track progress on support cases
- Manage a support contract
- Look up HP support contacts
- Review information about available services
- Enter discussions with other software customers
- Research and register for software training

Chapter 1

Introduction

1.1 TeMIP Service Adapter Overview

HP TeMIP Service Console (TSC) is a HP TeMIP and HP Business Service Management (BSM) based solution for monitoring the health of network links, service platforms and the services carried over the resources.

Using the data collected and published by the TeMIP (alarms), TeMIP Service Console continuously correlates them to maintain an up-to-date consolidated view of the operational state of all circuits and services that exist in the network.

To learn more about TSC, please read the *“The TeMIP Service Console Installation & Configuration Guide”*.

Figure 1 shows the overview of the TeMIP Service Adapter:

TeMIP BSM Alarm Forwarder is a component of TSC: it collects TeMIP alarm events and translates to TeMIP Service Adapter.

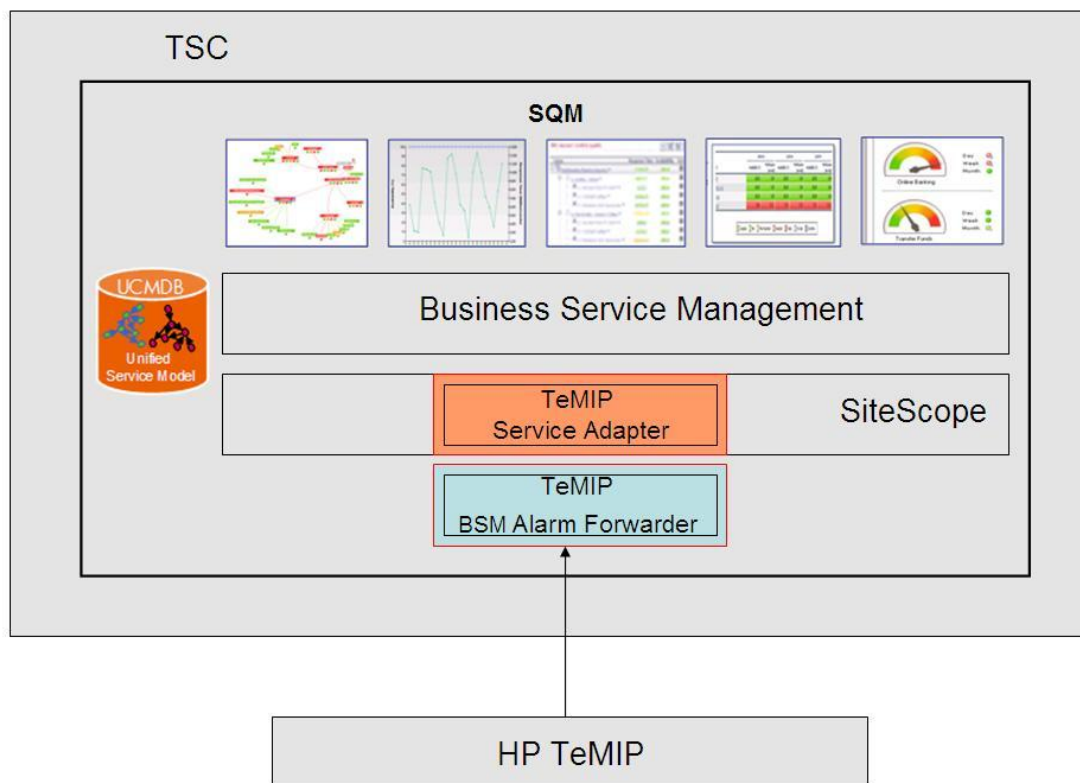


Figure 1 - TeMIP Service Adapter overview

The TeMIP Service Adapter is installed on SiteScope server; it is a mandatory component to make TSC solution working properly. The TeMIP Service Adapter is made of the following component:

- The TeMIP Service Adapter

The TeMIP Service Adapters receive the normalized Health Indicator and Key Performance Indicators data from the TeMIP BSM Alarm Forwarder and published the data into BSM CMDB. These data will be used by BSM logic engine to calculate states for targeted CIs and impacted service.

1.2 Data Collection

The TeMIP Service Adapter collects the events sent by BAF and converts the events into BSM samples which are used to calculate HI and KPI status. The events are processed as soon as they arrive.

The TeMIP Service Adapter is delivered with a list of monitors; each monitor is responsible for collecting data for a special type HI/KPI. These HI/KPIs are pre-defined in the BSM and below is a list of the HI/KPIs based on the events sent by the BAF:

Table 1 - List of HI/KPIs related to the TeMIP

His/KPIs	Description
Communication Status	based on TeMIP Communications Alarm severity
Environmental Status	based on Environmental Alarm severity
Equipment Status	based on Equipment Alarm severity
Processing Error Status	based on Processing Error Alarm severity
Quality Of Service Status	based on Quality Of Service Alarm severity
Fault Status	based on any listed alarm severity

The mapping between the TeMIP events severity and the HI state used in TeMIP Service Adapter is as following table:

Table 2 – Mapping of event severity and HI status

Event severity	HI status
Critical	Critical
Major	Major
Minor	Minor
Warning	Warning
Indeterminate	Warning
Clear	OK
Unknown	No data

Chapter 2

TeMIP Service Adapter installation

This chapter describes how to install the component that makes up the TeMIP Service Adapter:

- The TeMIP Service Adapter

2.1 Pre-requisites

This section describes the software, hardware and configuration pre-requisites which need to be validated and implemented before starting the installation of the TeMIP Service Adapter.

2.1.1 Hardware pre-requisites

The TeMIP Service Adapter should be installed on the same server as SiteScope.

The Server used to install SiteScope and TeMIP Service Adapter should have the following hardware requirements:

Table 3 - Hardware pre-requisites

Hardware element	Required capacity
Processor	800 MHZ or higher
Physical memory	1 GB minimum (2 GB+ recommended)
Hard disk	2 GB or more (10 GB+ recommended)

The requirements above are needed by SiteScope and TeMIP Service Adapter and they must be added to the hardware requirements of the other softwares hosted by the Windows server.

2.1.2 Software pre-requisites

The TeMIP Service Adapter has the following software requirements that must be **installed, configured and successfully started** before installing the TeMIP Service Adapter:

Table 4 – Software pre-requisites for windows

Software	Version
----------	---------

Microsoft Windows (a)	<ul style="list-style-type: none"> ➤ Microsoft Windows 2003 SP1, SP2 Standard/Enterprise Edition ➤ Microsoft Windows Server 2003 R2 SP1, SP2 Enterprise Edition ➤ Microsoft Windows Server 2008 R2 SP2 Standard/Enterprise Edition
HP Service Management Foundation	3.1
HP SiteScope	11.20
HP Business Service Management	9.1.X
HP TeMIP Service Console	6.3
Java Run Time Environment (b)	1.6 Update 14 (or higher)

Table 5 – Software pre-requisites for Linux

Software	Version
Linux	Red Hat Enterprise Linux 5.5
HP Service Management Foundation	3.1
HP SiteScope	11.20
HP Business Service Management	9.1.X
HP TeMIP Service Console	6.3
Java Run Time Environment (b)	1.6 Update 14 (or higher)

(a): the OS requirement is from SiteScope

(b): JRE is required by HP TeMIP Service Console if you install TSC on the same server.

IMPORTANT NOTE: when you install SiteScope and TeMIP Service Adapter on windows 2008 server, You have to turn off the UAC(User Access Control) policy. Otherwise it will forbid installer to access some files which may result the failure of installation.

2.1.3 Configuration pre-requisites

The TeMIP Service Adapter has the following configuration requirements that must be done before starting the TeMIP Service Adapter for the first time:

Table 6 - Configuration pre-requisites

Configuration domain	Needed configuration
SiteScope and Business Service Management	The connection between SiteScope and Business ServiceManagement has been successfully created as described in "Using SiteScope" document and SiteScope is accessible to Business Service Management.

2.2 Code Signing

Below mentioned procedure* allows you to assess the integrity of the delivered Product before installing it, by verifying the signature of the software packages.

Pick the signature (.sig) file shipped along with the product and use following GPG command

```
gpg --verify <product.sig> <product>
```

Example: gpg --verify VPNSVP-X51-3A.zip.sig VPNSVP-X51-3A.zip

Note: Look for the comments shown below in the command output

Good signature from "Hewlett-Packard Company (HP Code signing Service)"

Note: If you are not familiar with signature verification using GPG and intended to verify HP Product signature, follow the steps given below.

1. Check whether gnupg gpg is installed on the system. If no, install gnupg gpg
2. Configure GPG for accepting HP signature. The steps are the following:
 - a. Log as root on your system
 - b. Get the hpPublicKey from following location:
<https://h20392.www2.hp.com/portal/swdepot/displayProductInfo.do?productNumber=HPLinuxCodeSigning> and save it as hpPublicKey.pub
Note that the hpPublicKey file will be located in the root's home directory.
 - c. Follow the instruction found at above URL in the "Verification using GPG" section.

**HP strongly recommends using signature verification on its products, but there is no obligation. Customers will have the choice of running this verification or not as per their IT Policies.*

2.3 The TeMIP Service Adapter installation

2.3.1 Setting on SiteScope before installation

Using SiteScope 11.20 or latter kit, following setting need to be finished on SiteScope before installing TeMIP SA:

1. Open SiteScope interface, choose the “Preferences →Infrastructure Preferences→Template Settings”, make sure “Allow creation of template monitors directly under a template entity” is selected

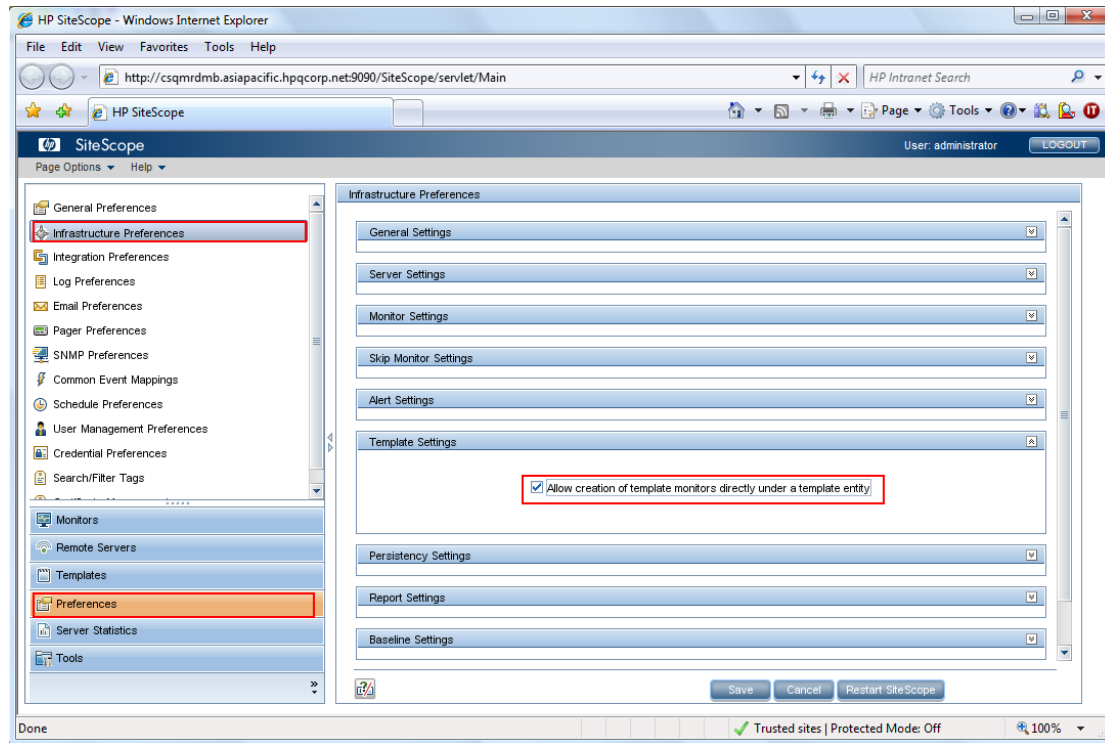


Figure 2 - Setting on SiteScope 11.xx for TeMIP SA Installation

2. Restart SiteScope.

2.3.2 Steps to install the TeMIP Service Adapter on a windows platform

1. Run the TeMIP Service Adapter installer
Double click on the TeMIP Service Adapter installation kit “SQMSolTEMV310RevA.exe”
2. The wizard requests the user to provide the SiteScope installation directory

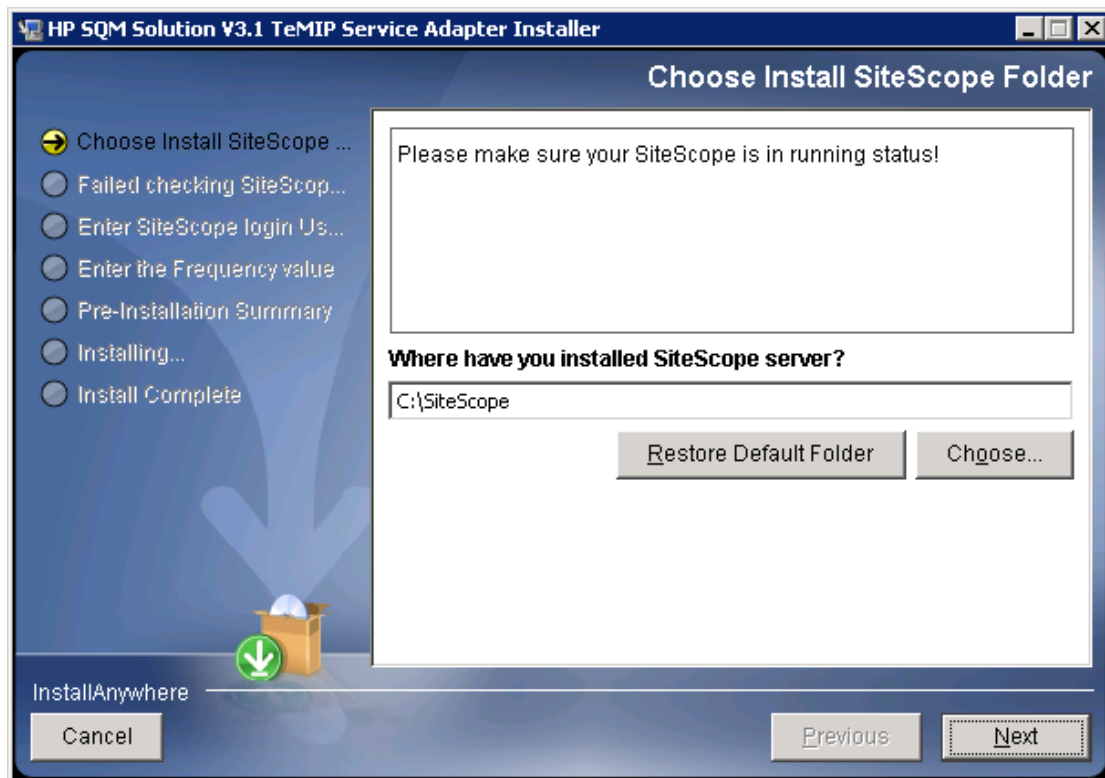


Figure 3 - TeMIP SA Installation Directory Input

3. Click on the “Next” button and enter the SiteScope login user and password

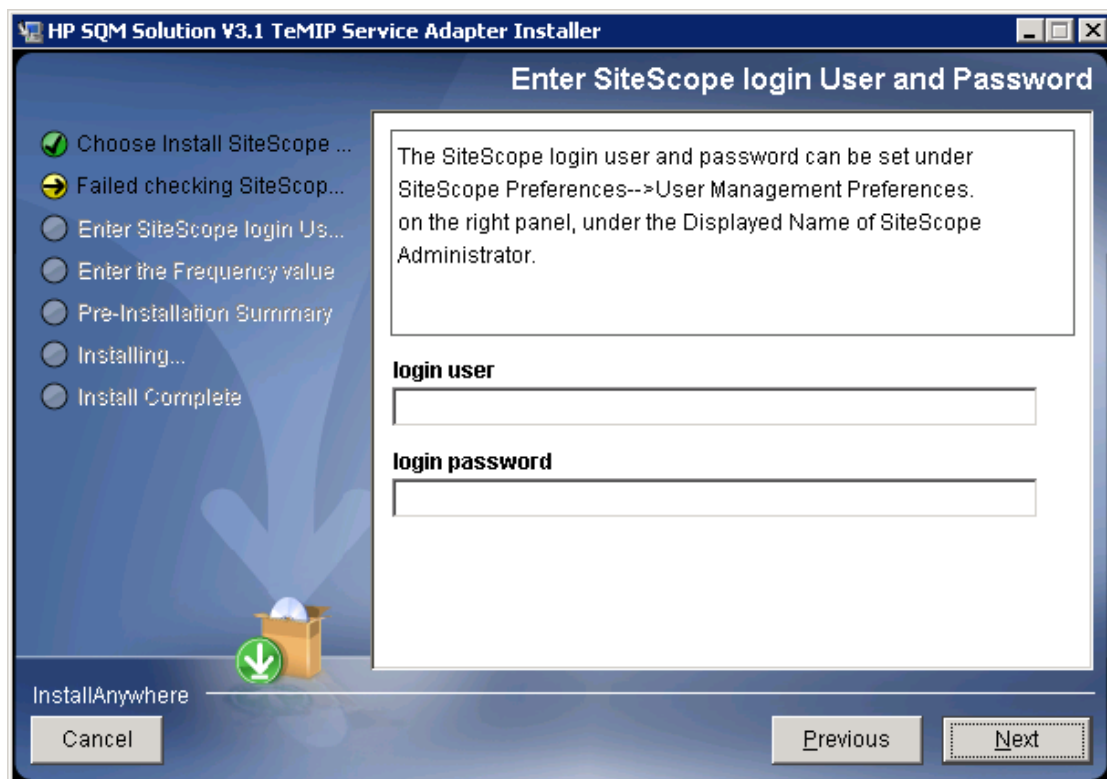


Figure 4 – Enter the login user and password

4. Click on the “Next” button and enter the frequency of monitors

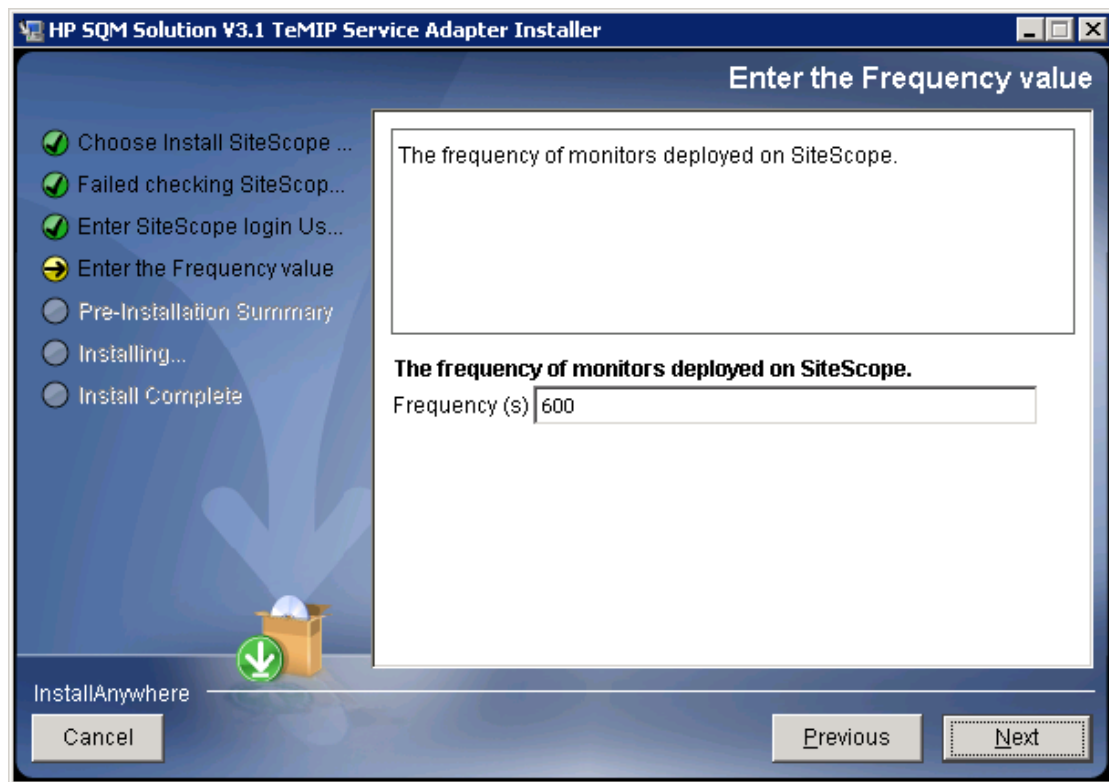


Figure 5 - Enter the frequency

5. Click on the “Next” button and the installer displays the pre-installation summary screen:

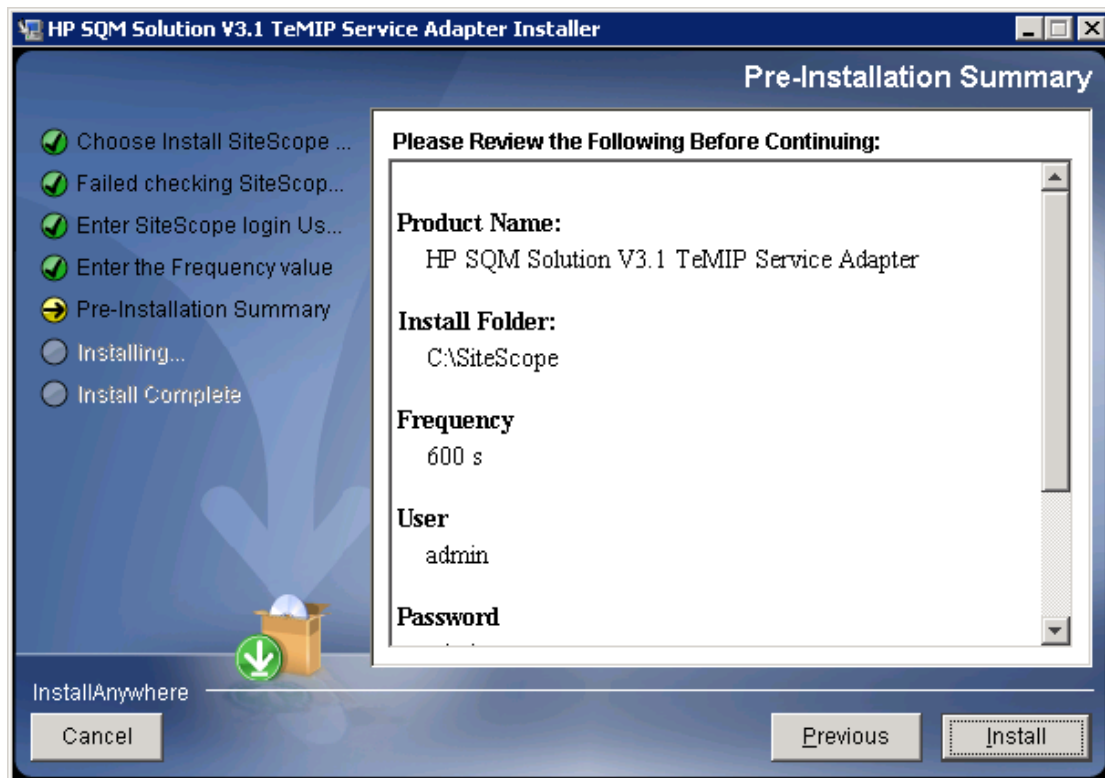


Figure 6 - TeMIP SA Installation Summary

6. Review the values you have selected and click on the “Install” button when you are ready to proceed with the installation

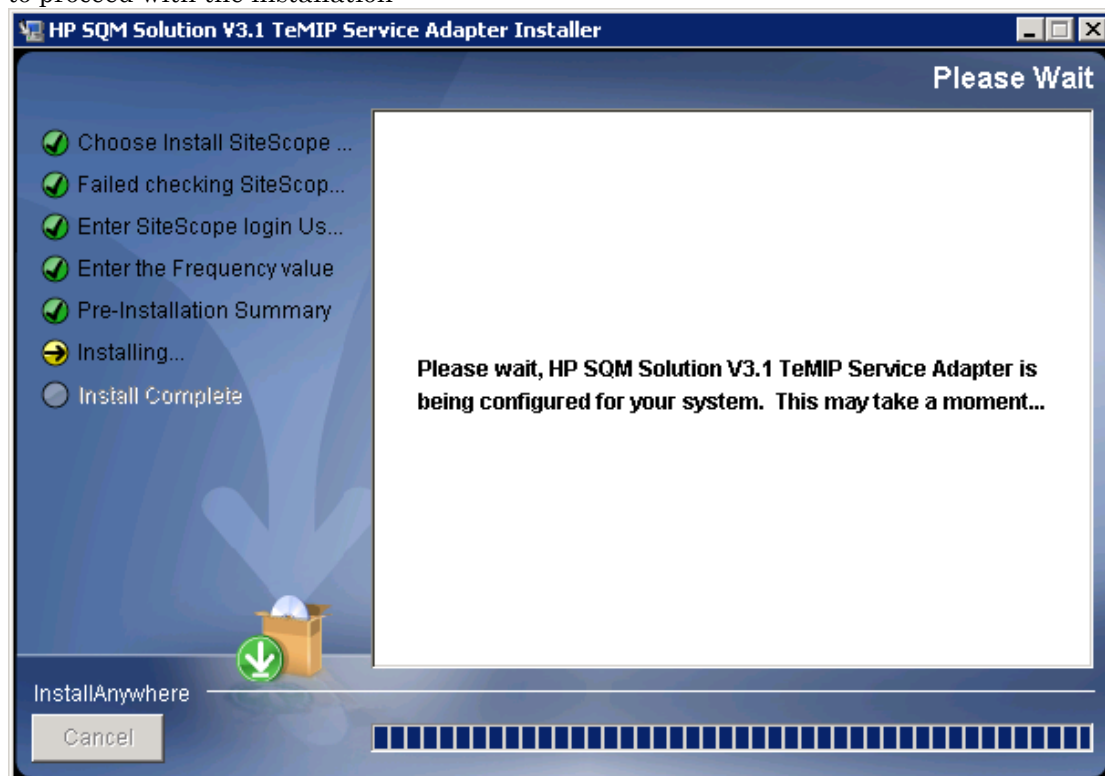


Figure 7 - TeMIP SA Installing

7. Check the status of the installation and click on the “Done” button to terminate it:

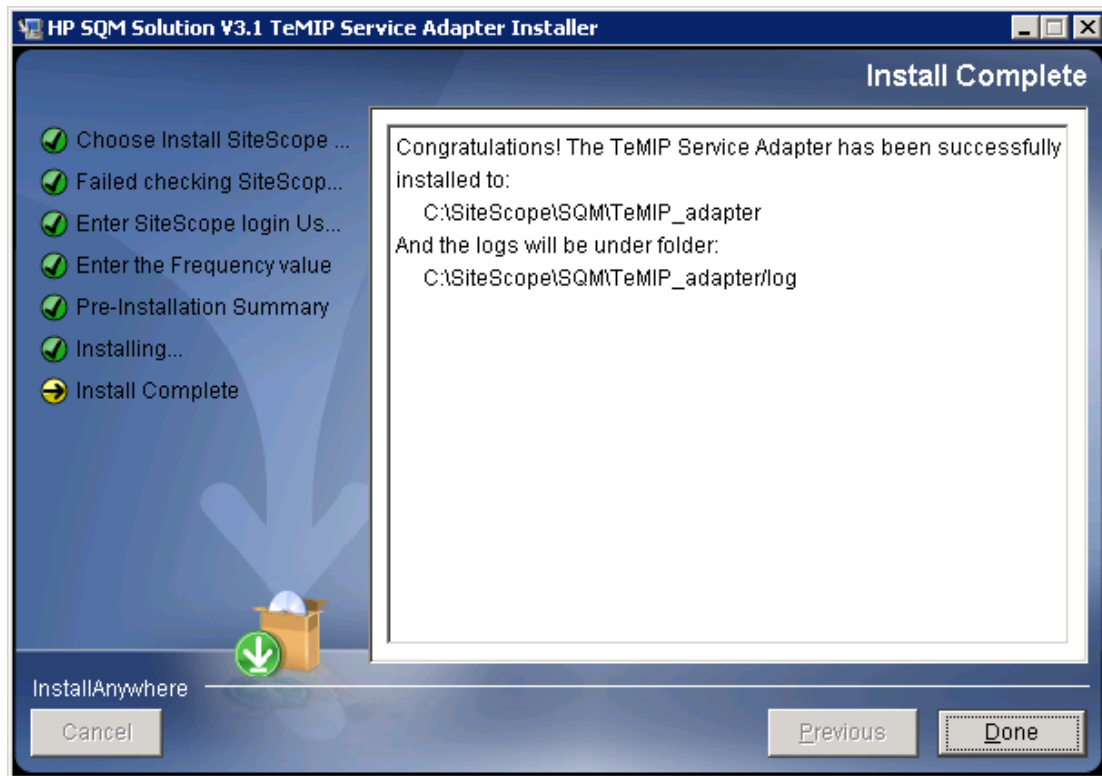


Figure 8 - TeMIP SA Installation Completion

2.3.3 Install the TeMIP Service Adapter on a Linux platform

2.3.3.1 Steps to install the TeMIP Service Adapter on Linux in graphic mode

1. Set the Display variable.
For example: `export DISPLAY=hostname:0.0`. Here hostname is the server where your XServer is running.
2. Run the TeMIP Service Adapter installer
Execute the script: `./SQMSolTEMV310RevA.bin`
3. A GUI will be prompt to request the user to provide the SiteScope installation directory.
Note: Please make sure SiteScope is in running status!

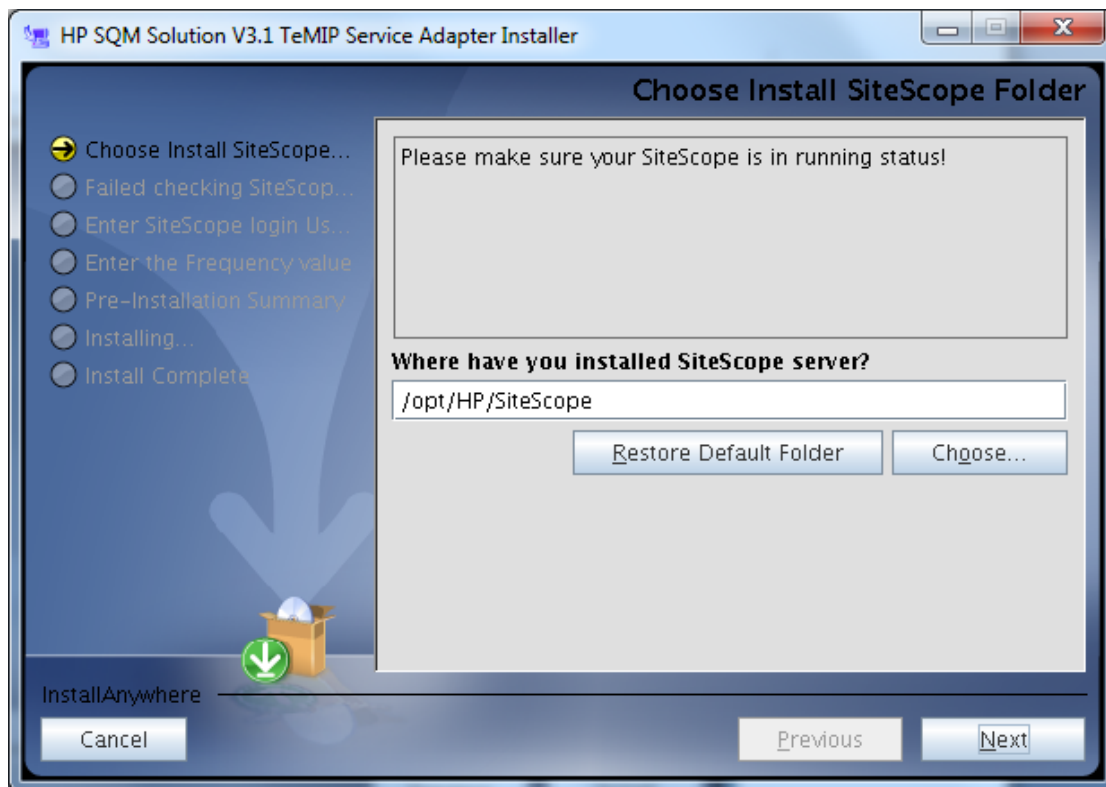


Figure 9 - TeMIP SA Installation Directory Input

4. Click on the “Next” button and enter the SiteScope login user and password

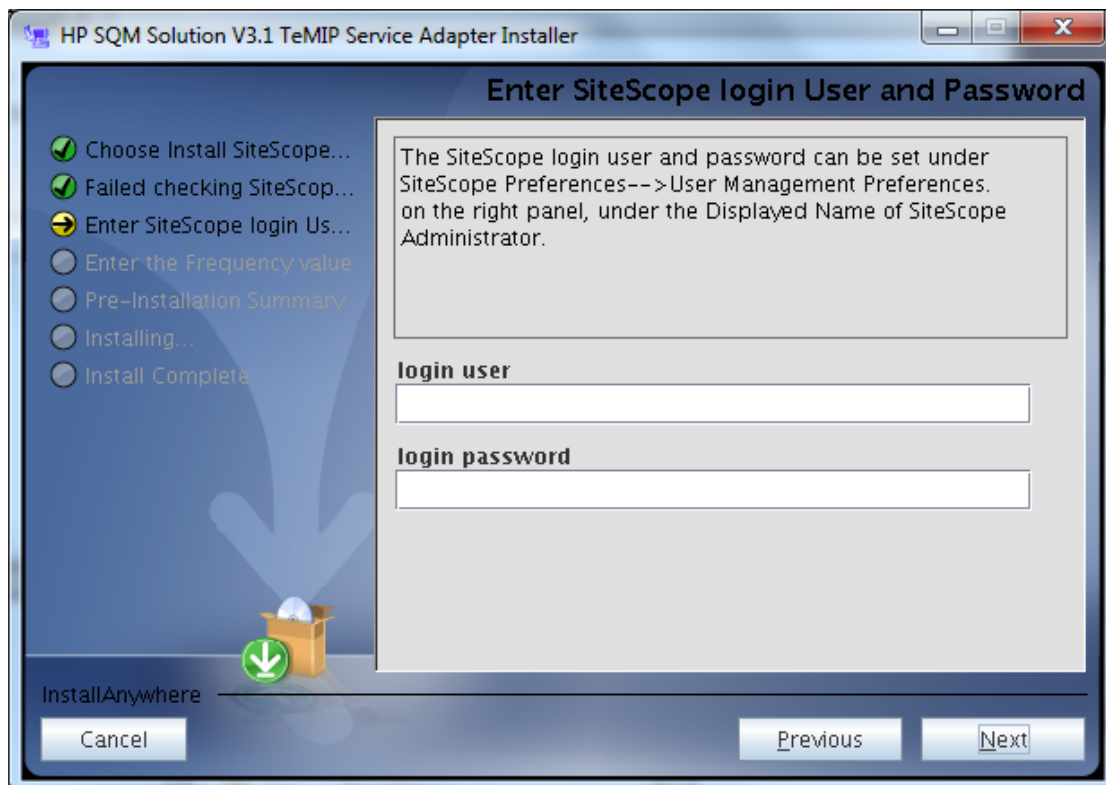


Figure 10 – Enter SiteScope login user and password

5. Click on the “Next” button and enter the frequency of monitors

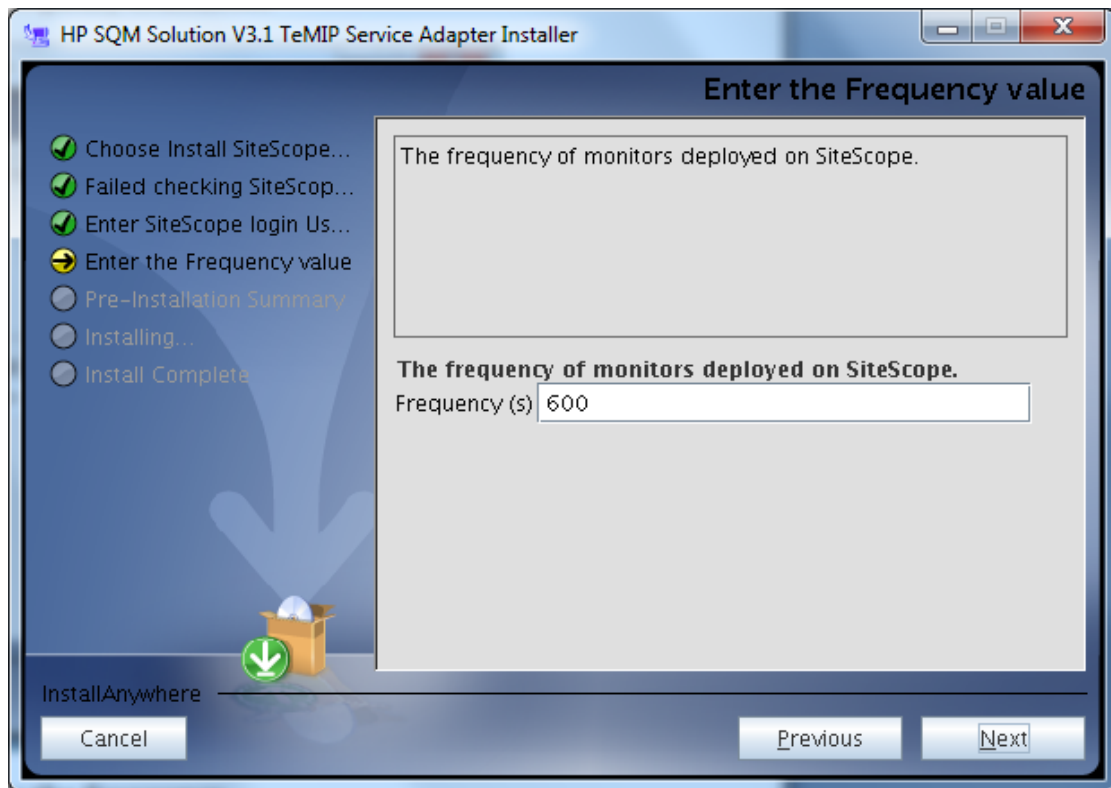


Figure 11 - Enter the frequency

6. Click on the “Next” button and the installer displays the pre-installation summary screen:

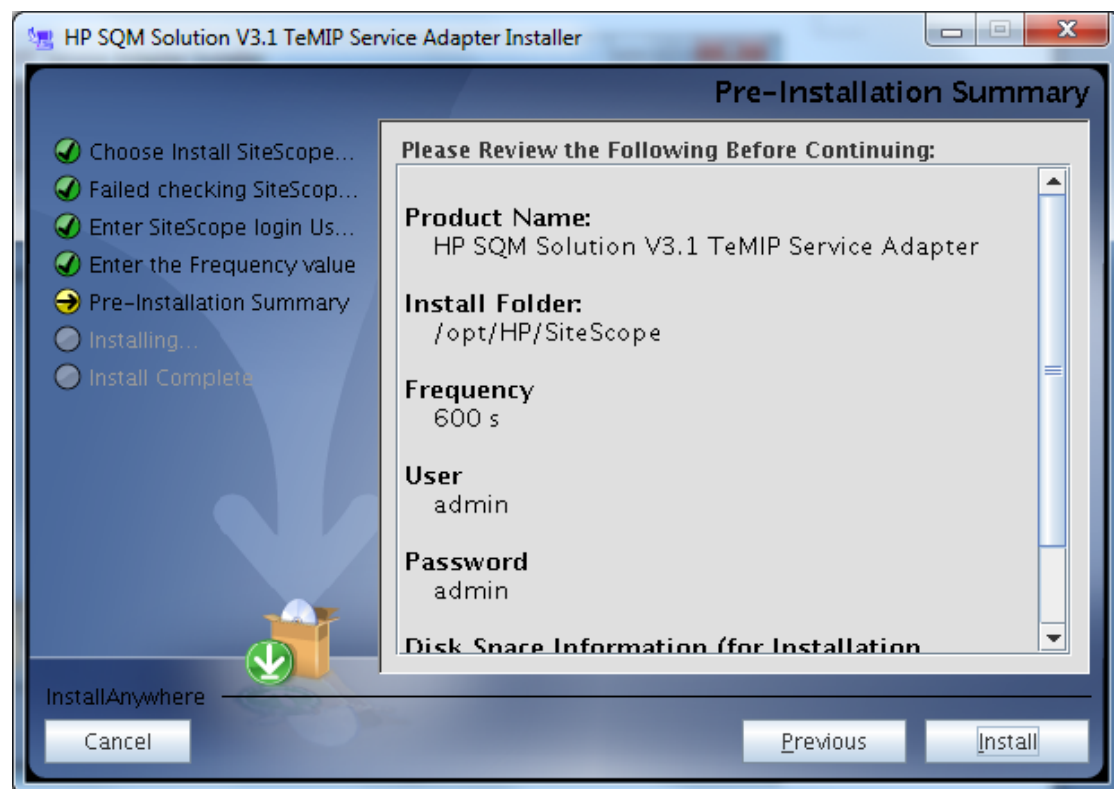


Figure 12 - TeMIP SA Installation Summary

7. Review the values you have selected and click on the "Install" button when you are ready to proceed with the installation

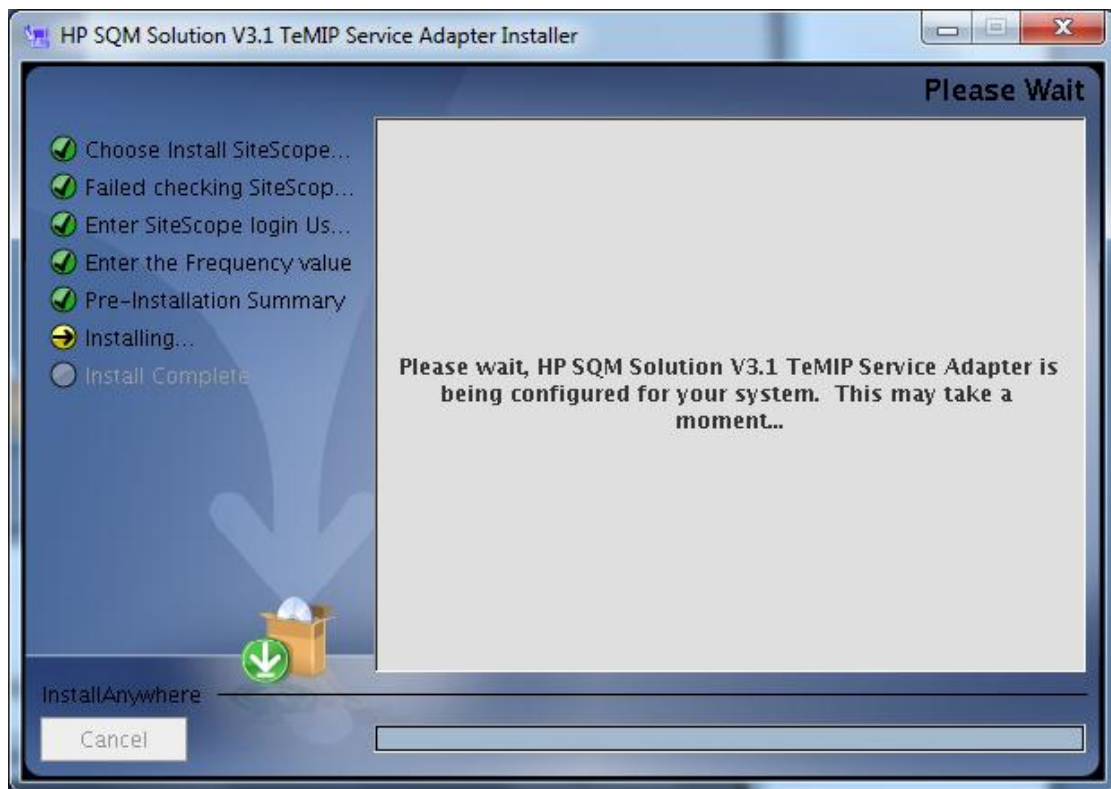


Figure 13 - TeMIP SA Is Installing

8. Check the status of the installation and click on the “Done” button to terminate it:

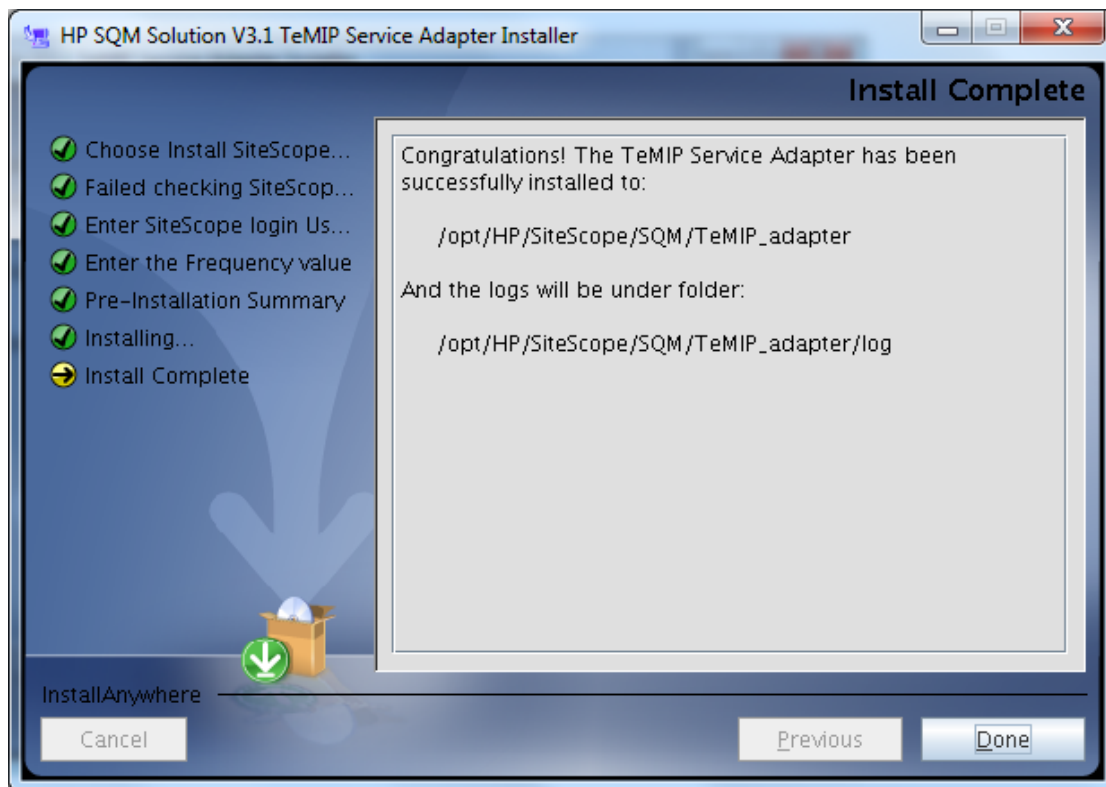


Figure 14 - TeMIP SA Installation Completion

2.3.3.2 Steps to install the TeMIP Service Adapter on Linux in console mode

You can install the TeMIP Service Adapter using console mode.

To install TeMIP Service Adapter on Linux using the console mode:

1. Download the setup file SQMSolTEMV310RevA.bin to the machine where you want to install TeMIP Service Adapter.
2. Run the following command:

```
./SQMSolTEMV310RevA.bin -i console
```

The installation script initializes the Java Virtual Machine to begin the installation.

3. Enter the SiteScope installed folder, and then press *Enter* to continue.

The default folder is: /opt/HP/SiteScope

Note: Please make sure your SiteScope is in running status!

```
root@ccmepm10:/user/qiur
Launching installer...

=====
HP SQM Solution V3.1 TeMIP Service Adapter      (created with InstallAnywhere)
=====

Preparing CONSOLE Mode Installation...

=====
Choose Install SiteScope Folder
=====

Please make sure your SiteScope is in running status!

Where have you installed SiteScope server?

    Default Install Folder: /opt/HP/SiteScope

ENTER AN ABSOLUTE PATH, OR PRESS <ENTER> TO ACCEPT THE DEFAULT
: █
```

Figure 15- TeMIP SA Installation Directory Input

4. Enter the SiteScope login user, and then press *Enter* to continue.

```
root@ccmepm10:/user/qiur

=====
Choose Install SiteScope Folder
=====

Please make sure your SiteScope is in running status!

Where have you installed SiteScope server?

    Default Install Folder: /opt/HP/SiteScope

ENTER AN ABSOLUTE PATH, OR PRESS <ENTER> TO ACCEPT THE DEFAULT
:

=====

Enter the SiteScope login user
=====

The SiteScope user and password can be set under SiteScope Preferences-->User Ma
nagement Preferences.
on the right panel, under the Displayed Name of SiteScope Administrator.

User (DEFAULT: ): █
```

Figure 16 – Enter SiteScope login user

5. Enter the SiteScope password, and then press *Enter* to continue.

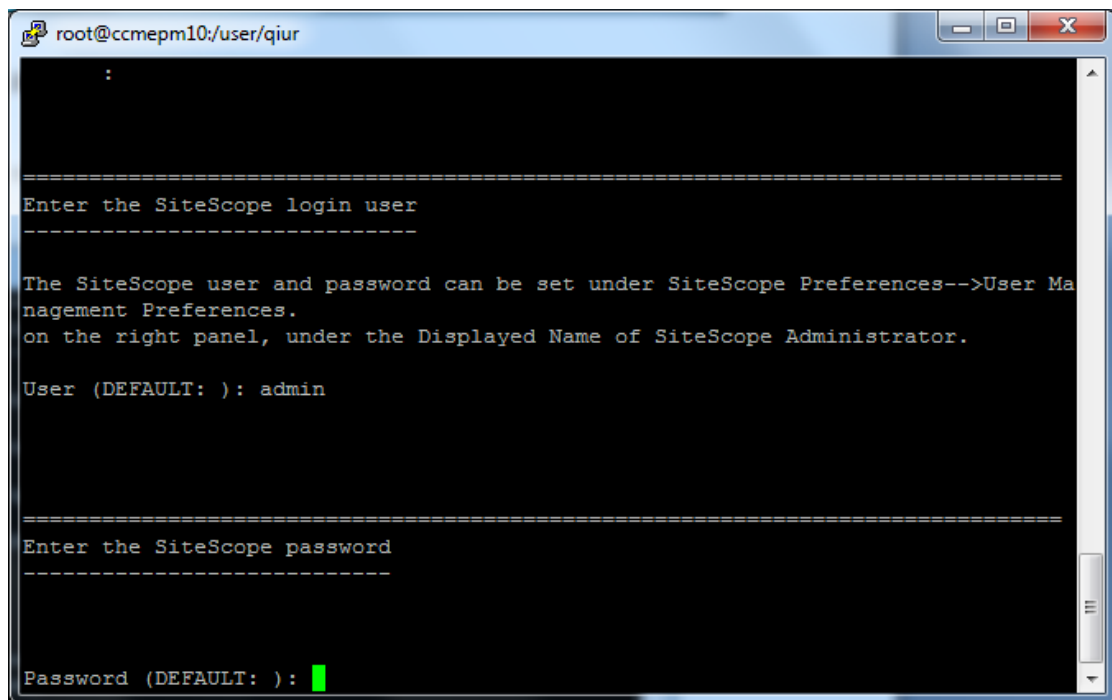


Figure 17 – Enter SiteScope login password

6. Enter the frequency of monitors deployed on SiteScope, and then press *Enter* to continue.

The default value is : 600

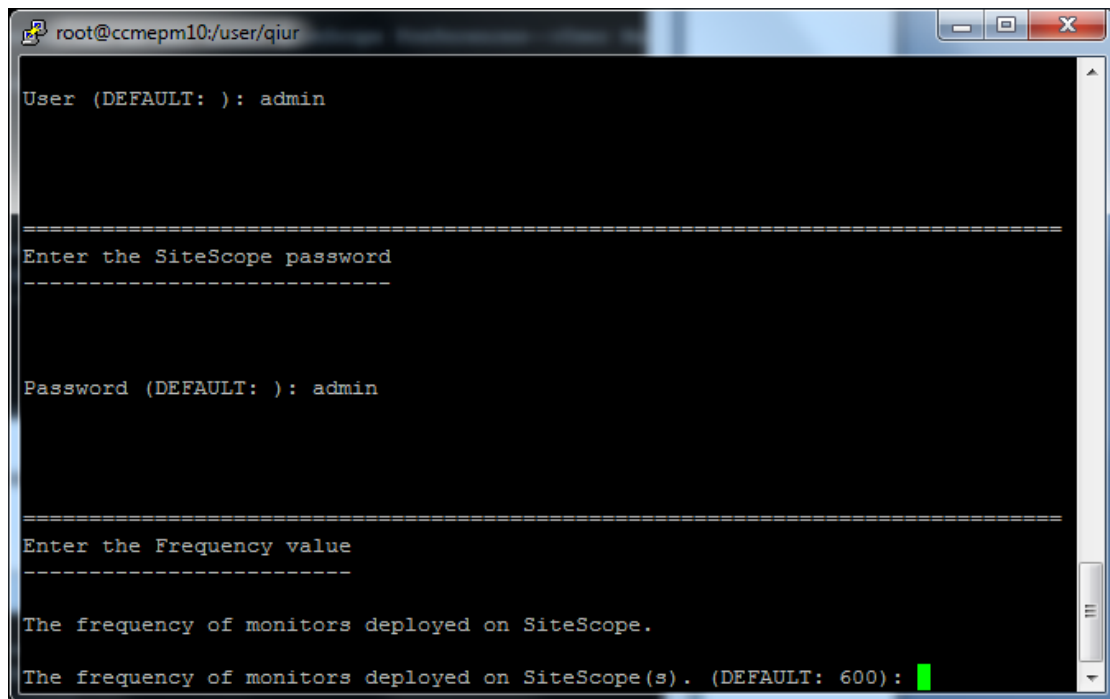
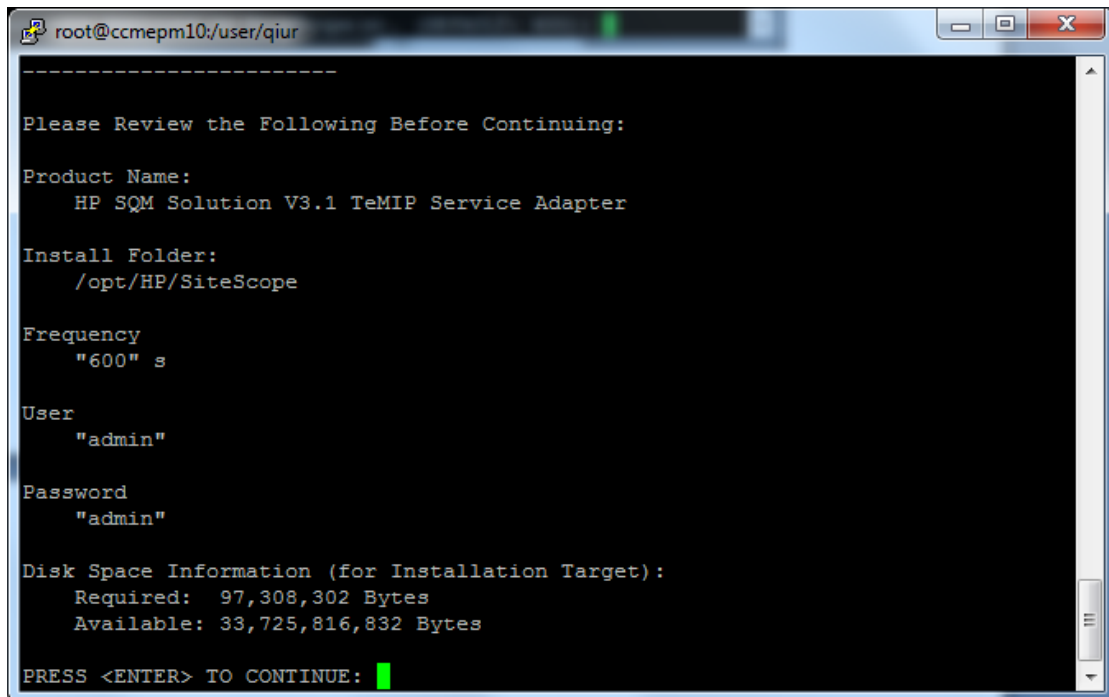


Figure 18 - Enter the frequency

7. Pre-Installation Summary, and then press *Enter* to continue.



```
root@ccmepm10:/user/qiur
-----
Please Review the Following Before Continuing:

Product Name:
    HP SQM Solution V3.1 TeMIP Service Adapter

Install Folder:
    /opt/HP/SiteScope

Frequency
    "600" s

User
    "admin"

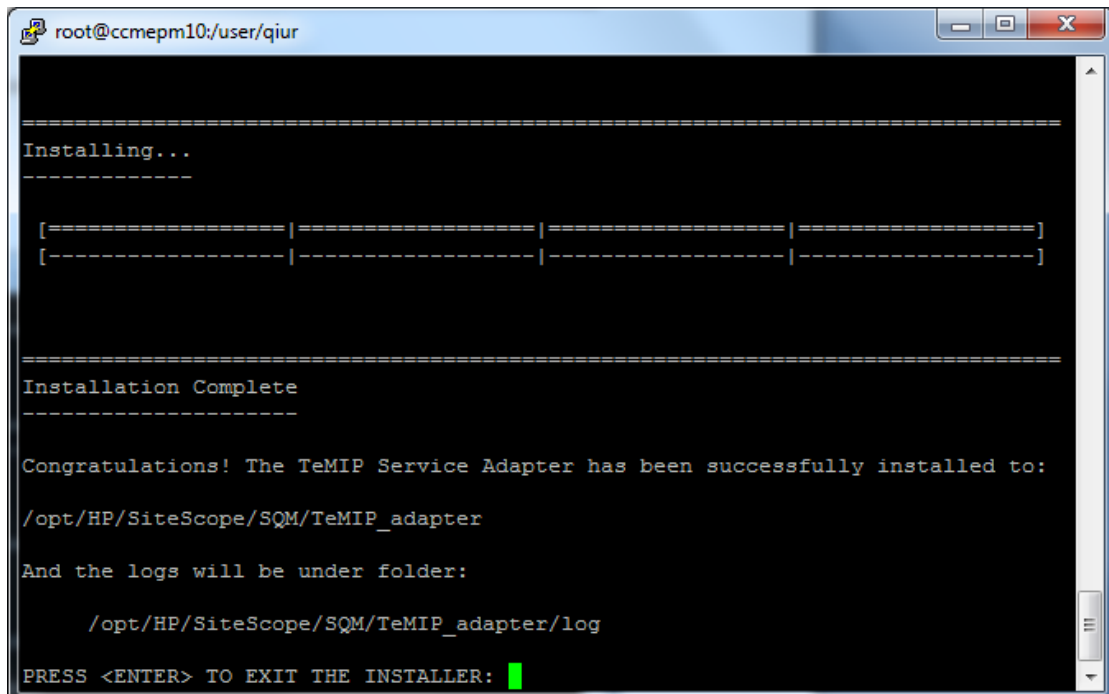
Password
    "admin"

Disk Space Information (for Installation Target):
    Required:  97,308,302 Bytes
    Available: 33,725,816,832 Bytes

PRESS <ENTER> TO CONTINUE: █
```

Figure 19 – Pre-Installation Summary

8. Press *Enter* to Exit the installation.



```
root@ccmepm10:/user/qiur
=====
Installing...
-----

[=====|=====|=====|=====]
[-----|-----|-----|-----]

=====
Installation Complete
=====

Congratulations! The TeMIP Service Adapter has been successfully installed to:

/opt/HP/SiteScope/SQM/TeMIP_adapter

And the logs will be under folder:

    /opt/HP/SiteScope/SQM/TeMIP_adapter/log

PRESS <ENTER> TO EXIT THE INSTALLER: █
```

Figure 20 - TeMIP SA Installation Completion

2.3.4 Post Installation Verification

After a successful installation of the Service Adapter, the installer creates a file named “InstallationStatus” with the string “SUCCESS” as content in the installation directory:

<SITESCOPE_INSTALL_DIR>/SQM/TeMIP_adapter/

After installing the TeMIP Service Adapter , the following monitors should be created in SiteScope:

- One monitor group:
 - “TEMIP_FAULT”
- Eight “Technology Web Service Integration” monitors under this monitor group

Table 6 – “Technology Web Service Integration” Monitors

Monitor	Function
TMP_FLT_CommunicationsAlarm	This monitor maps the alarms of type “Communications” to the KPI “Communication Status”
TMP_FLT_EnvironmentalAlarm	This monitor maps the alarms of type “Environment” to the KPI “Environmental Status”
TMP_FLT_EquipmentAlarm	This monitor maps the alarms of type “Equipment” to the KPI “Equipment Status”
TMP_FLT_ProcessingErrorAlarm	This monitor maps the alarms of type “Processing” to the KPI “Processing Status”
TMP_FLT_QualityOfServiceAlarm	This monitor maps the alarms of type “Quality Of Service” to the KPI “Quality Of Service Status”
TMP_FLT_ResynchAlarm	This monitor maps the re-synchronization events to the TeMIP KPIs
TMP_FLT_SelfManagement	This monitor maps TSC self-management events to SelfManagement KPI “Fault Status”
TMP_FLT_TeMIP	This monitor maps the alarms of all types to the TeMIP KPI “Fault Status”

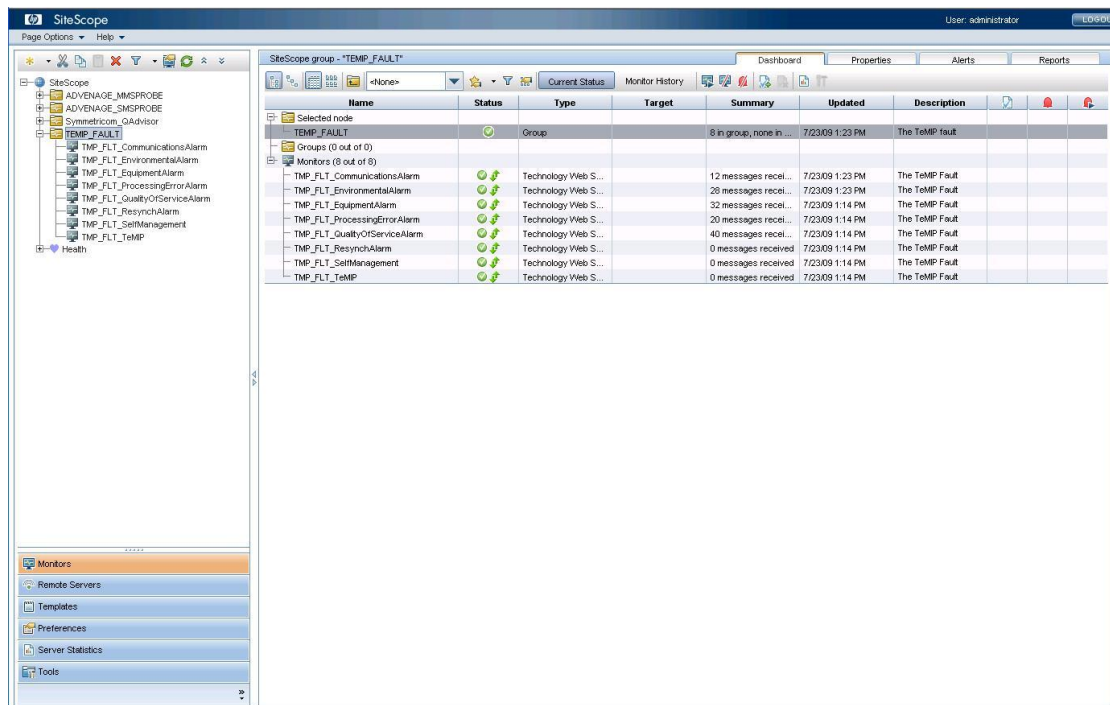


Figure 24 - Overview of the monitors created by the TeMIP SA

- Each “Web Service Integration” monitor contains the Field Mapping information used to forward the collected values to SQM
- Only the TMP_ELT_SelfManagement monitor contains a topology script used to create in the SQM CMDB the self management CIs to monitoring the BAF status.

After the installation, on the SiteScope UI, goes to Templates, you can find a template container TeMIP_MA was created. Under the container, the template TeMIP_MA_Template was created.

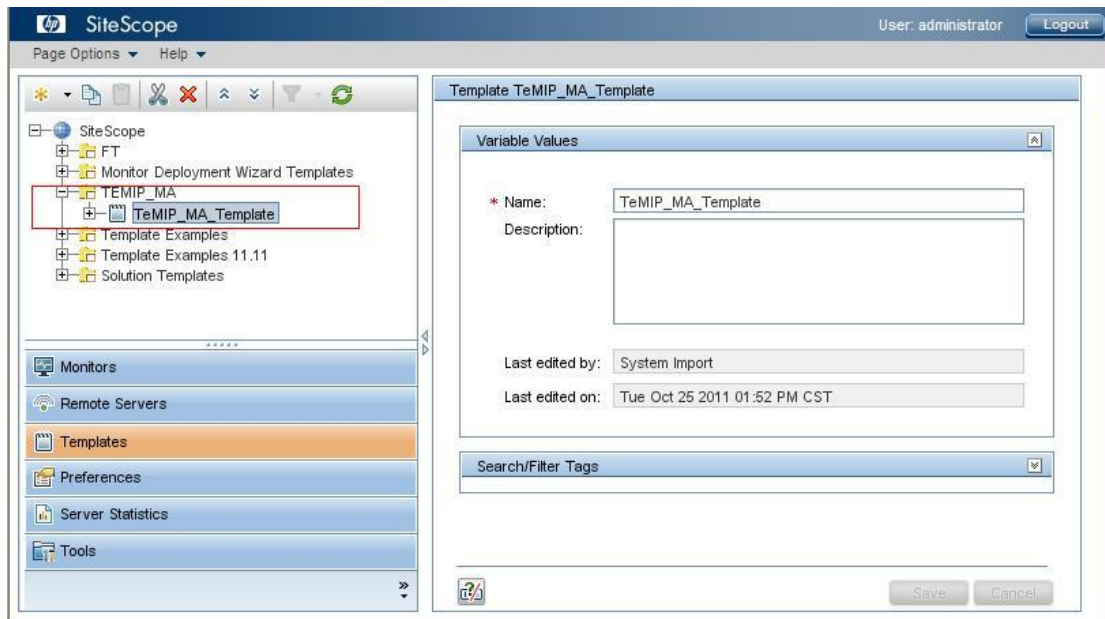


Figure 22 - TeMIP_MA template

Note: if the TeMIP monitors are not created automatically in SiteScope Monitors UI panel when you do installation on SiteScope 11.xx. Then you need a manually operation to deploy the monitors:

Right click on the 'SiteScope' root node and left click the 'Deploy Template' action, and choose the Template 'TeMIP_MA_Template', click the 'OK' button.

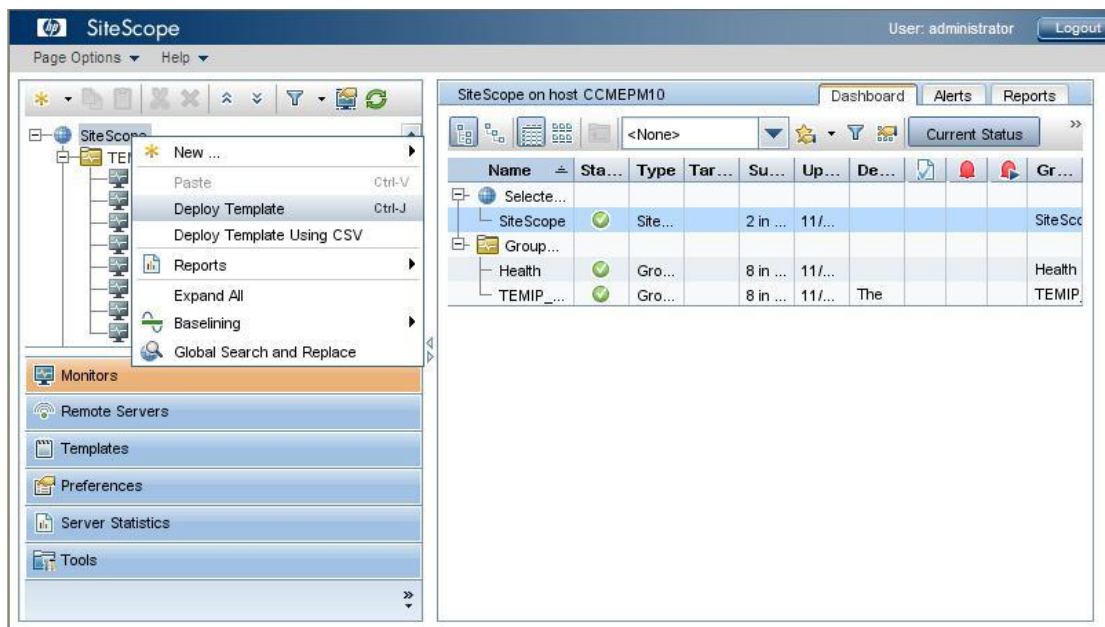


Figure 23 - Manually deploy the monitors

2.4 The TeMIP Service Adapter un-installation on a windows platform

The un-installation file will be delivered under
<SITESCOPE_INSTALL_DIR>\SQM\TeMIP_adapter\Uninstall\uninstall.exe after you have done the installation.

Note: <SITESCOPE_INSTALL_DIR> is the folder where your SiteScope is installed.

The following steps need to be completed to un-install the Service Adapter:

1. Run kit uninstall.exe under
<SITESCOPE_INSTALL_DIR>\SQM\TeMIP_adapter\Uninstall
2. The un-installation wizard displays the introduction screen:

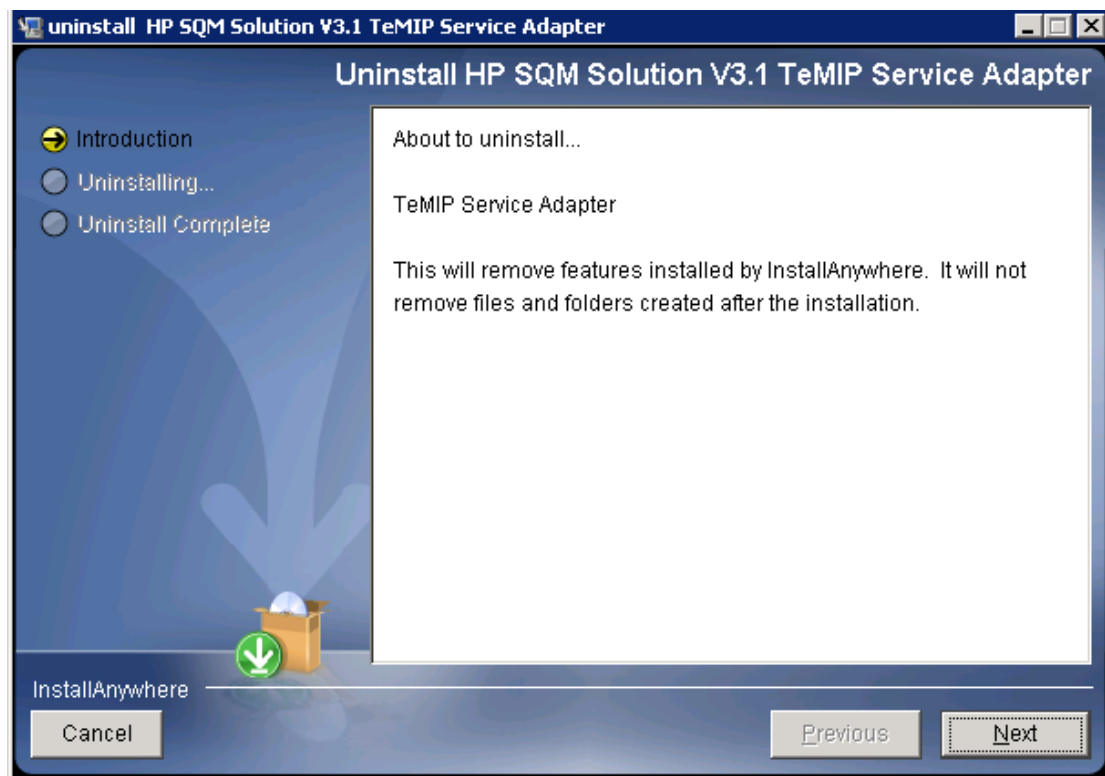


Figure 24 - Service Adapter component un-installation introduction

3. Click the “Next” button to enter the SiteScope login user and password.

Note: You must set the SiteScope login user and password in order to uninstall the monitors; you can also manually delete the monitors if you don't want to.

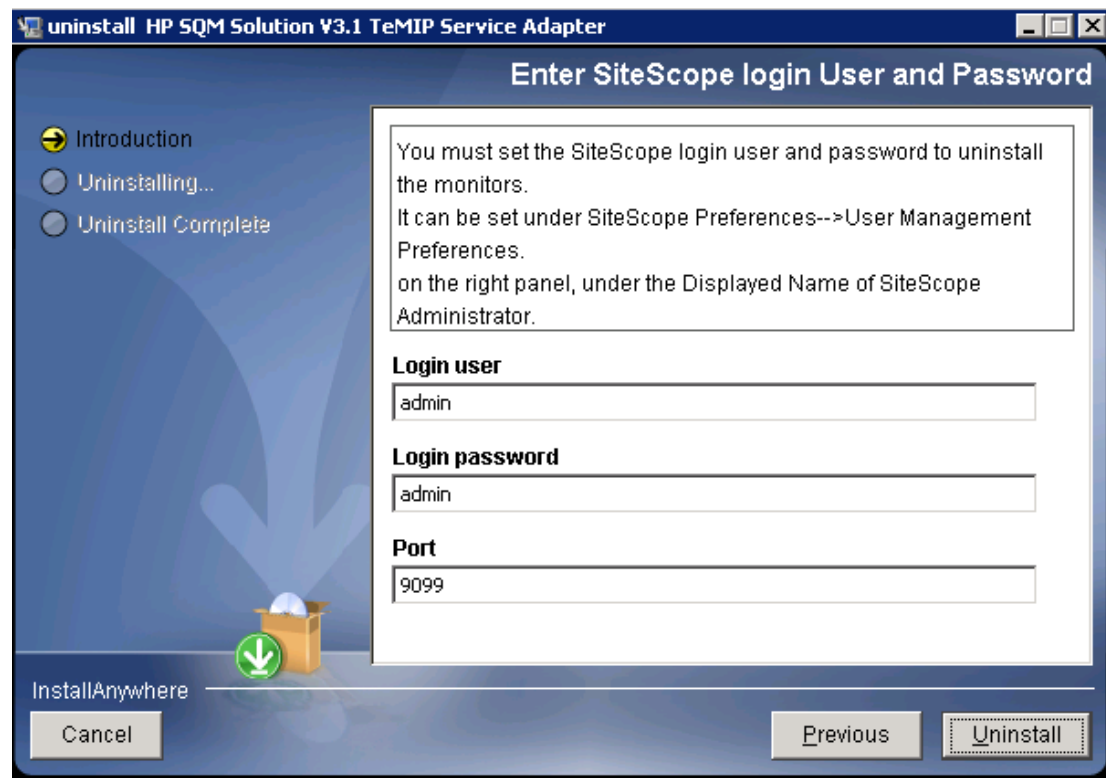


Figure 25 – Enter SiteScope login user and port

4. Click the '**Uninstall**' button to do the un-installation.
5. Check the status of the un-installation and click on the "**Done**" button to terminate it:

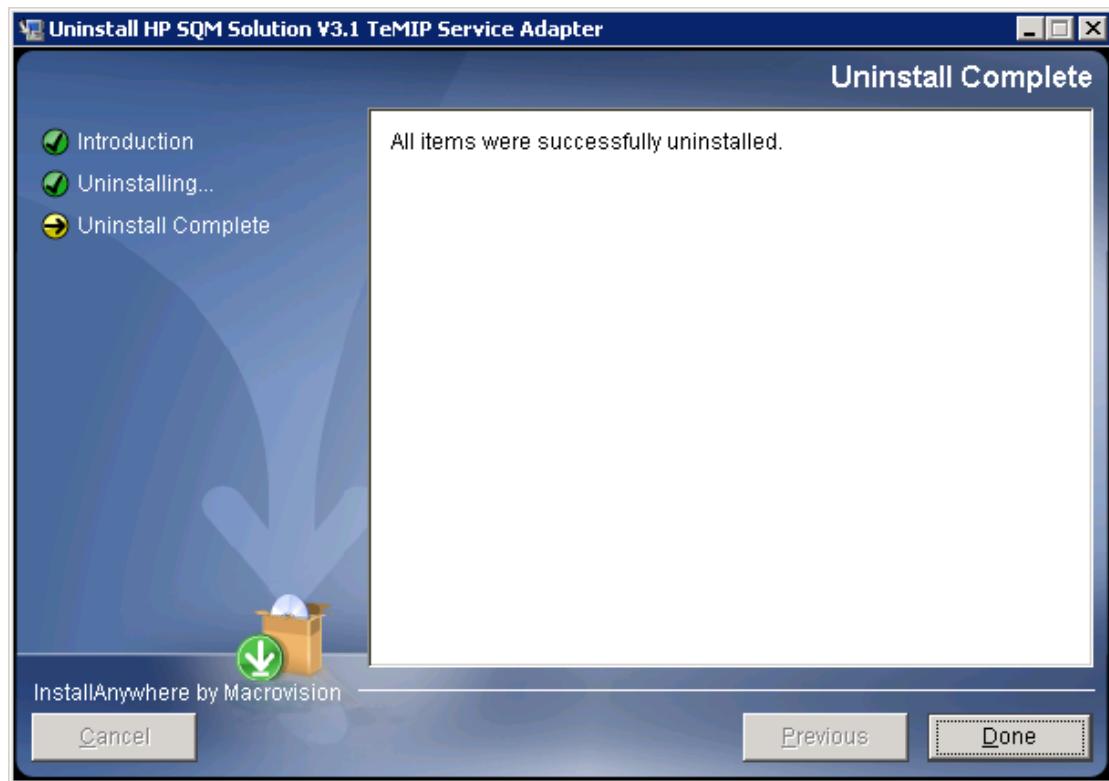


Figure 26 - TeMIP SA component un-installation completion

After a successful un-installation of the SA component, all the installed files will be removed from installed folder except the files that were added or updated after installation.

Note: when you do un-installation TeMIP SA on HP SiteScope version 11.xx, it will not delete the monitors automatically; you should manually delete them on SiteScope UI.

2.5 The TeMIP Service Adapter un-installation on a Linux platform

The un-installation for Linux will be delivered under `<SITESCOPE_INSTALL_DIR>/SQM/TeMIP_adapter/Uninstall/uninstall` after you have done the installation.

To un-install the TeMIP Service Adapter on a Linux platform:

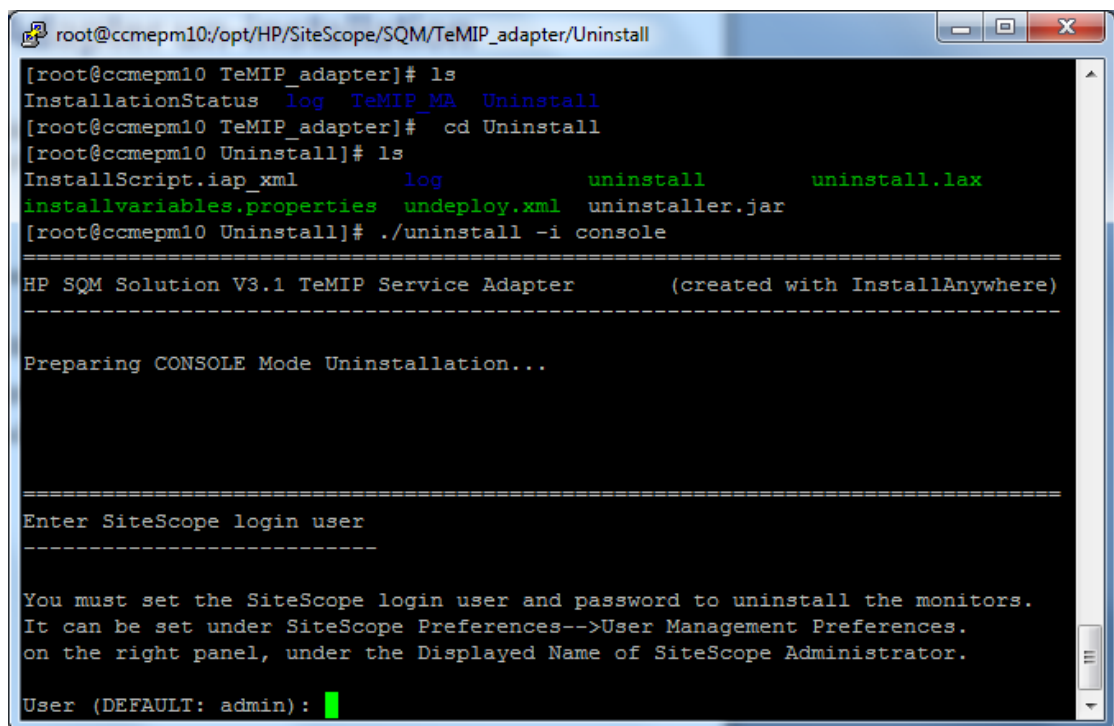
1. Run the uninstall script under `<SITESCOPE_INSTALL_DIR>/SQM/TeMIP_adapter/Uninstall`.

An example command line to run the script in console mode is:

```
./<SITESCOPE_INSTALL_DIR>/SQM/TeMIP_adapter/Uninstall/uninstall -i console
```

And enter the SiteScope login user, and then press *Enter* to continue.

Note: You must set the SiteScope login user and password in order to uninstall the monitors; you can also manually delete the monitors if you don't want to.



```
root@ccmepm10:/opt/HP/SiteScope/SQM/TeMIP_adapter/Uninstall
[root@ccmepm10 TeMIP_adapter]# ls
InstallationStatus  log  TeMIP_MA  Uninstall
[root@ccmepm10 TeMIP_adapter]# cd Uninstall
[root@ccmepm10 Uninstall]# ls
InstallScript.iap.xml      log          uninstall      uninstall.lax
installvariables.properties  undeploy.xml  uninstaller.jar
[root@ccmepm10 Uninstall]# ./uninstall -i console
=====
HP SQM Solution V3.1 TeMIP Service Adapter      (created with InstallAnywhere)
=====

Preparing CONSOLE Mode Uninstallation...

=====

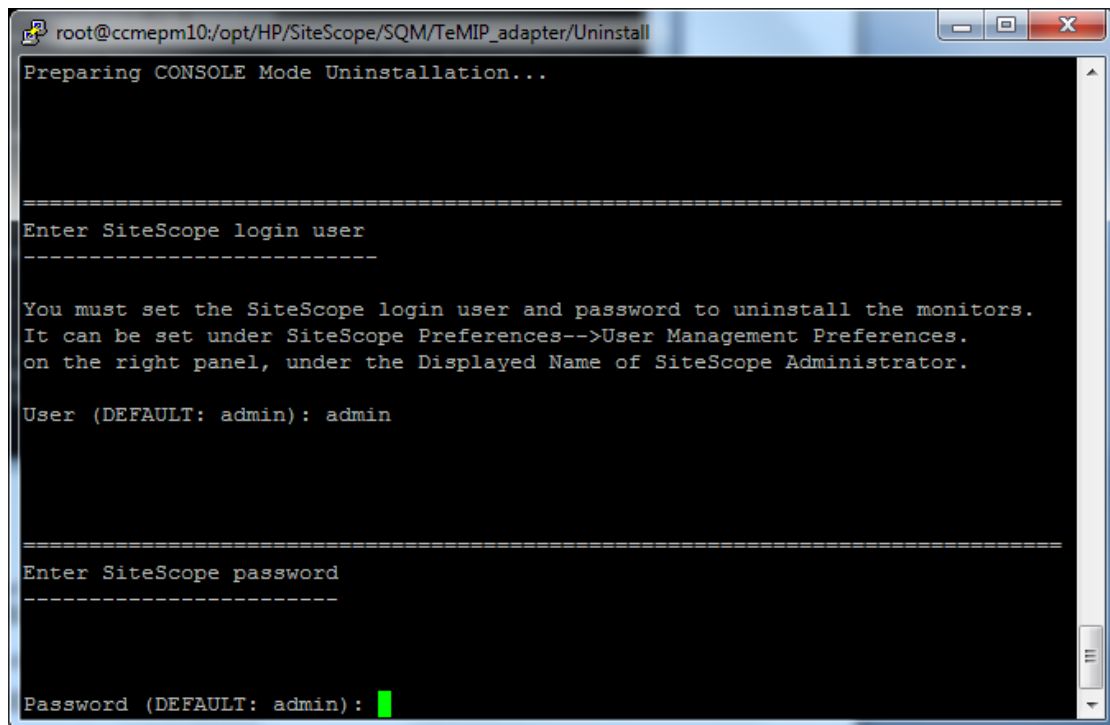
Enter SiteScope login user
-----

You must set the SiteScope login user and password to uninstall the monitors.
It can be set under SiteScope Preferences-->User Management Preferences.
on the right panel, under the Displayed Name of SiteScope Administrator.

User (DEFAULT: admin):
```

Figure 27 – Enter SiteScope login user

2. Enter the SiteScope login password, and then press *Enter* to continue.



```
root@ccmepm10:/opt/HP/SiteScope/SQM/TeMIP_adapter/Uninstall
Preparing CONSOLE Mode Uninstallation...

=====
Enter SiteScope login user
-----

You must set the SiteScope login user and password to uninstall the monitors.
It can be set under SiteScope Preferences-->User Management Preferences.
on the right panel, under the Displayed Name of SiteScope Administrator.

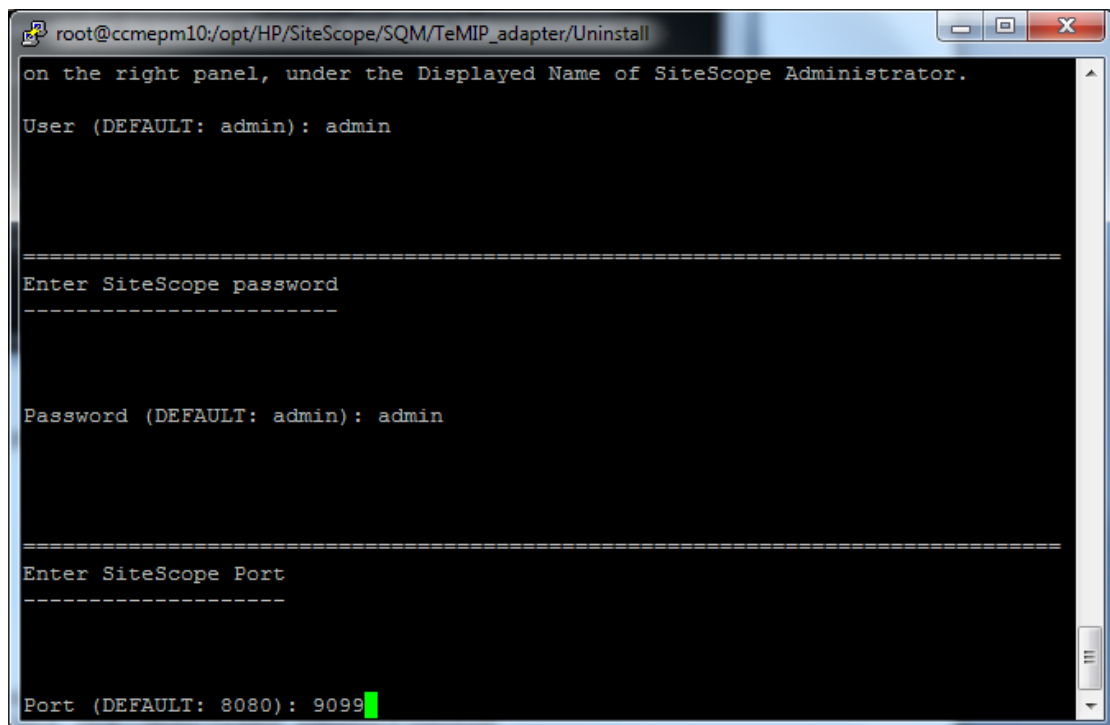
User (DEFAULT: admin): admin

=====
Enter SiteScope password
-----

Password (DEFAULT: admin): █
```

Figure 28 – Enter SiteScope login password

3. Enter the SiteScope port, and then press *Enter* to continue.



```
root@ccmepm10:/opt/HP/SiteScope/SQM/TeMIP_adapter/Uninstall
on the right panel, under the Displayed Name of SiteScope Administrator.

User (DEFAULT: admin): admin

=====
Enter SiteScope password
-----

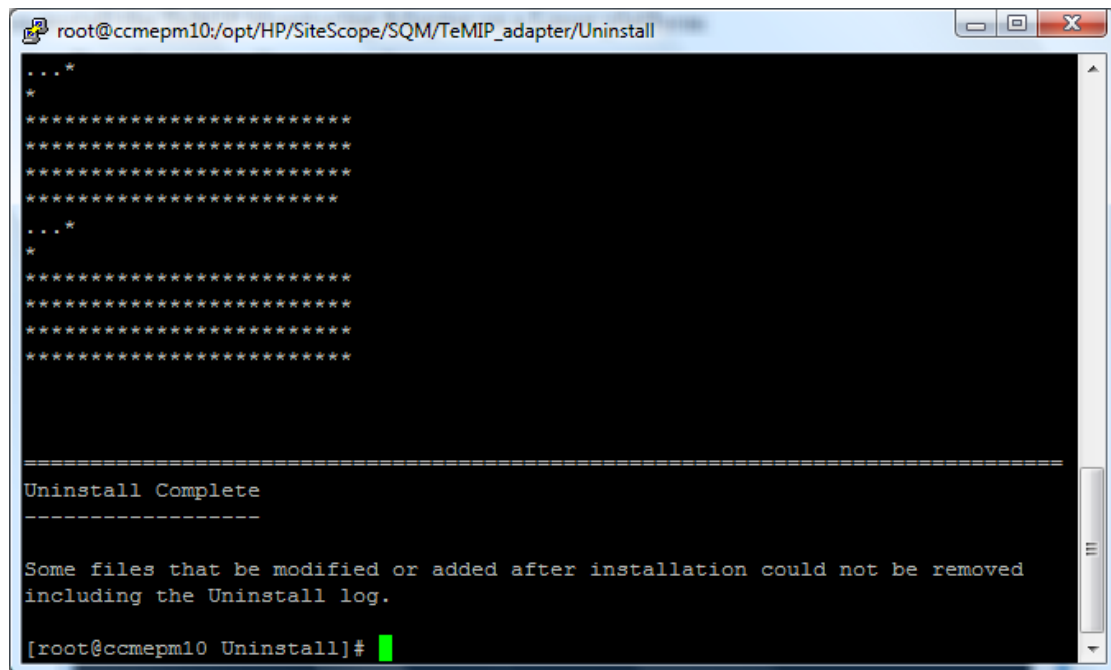
Password (DEFAULT: admin): admin

=====
Enter SiteScope Port
-----

Port (DEFAULT: 8080): 9099 █
```

Figure 29 – Enter SiteScope port

4. Uninstall Complete.



A terminal window titled 'root@ccmepm10:/opt/HP/SiteScope/SQM/TeMIP_adapter/Uninstall' showing the completion of the TeMIP SA component un-installation. The output consists of two decorative star borders, followed by the text 'Uninstall Complete' and a dashed line. Below this, a message states: 'Some files that be modified or added after installation could not be removed including the Uninstall log.' The prompt '[root@ccmepm10 Uninstall]#' is visible at the bottom with a green cursor.

```
root@ccmepm10:/opt/HP/SiteScope/SQM/TeMIP_adapter/Uninstall
...*
*
*****
*****
*****
*****
...*
*
*****
*****
*****
*****

=====

Uninstall Complete
-----

Some files that be modified or added after installation could not be removed
including the Uninstall log.

[root@ccmepm10 Uninstall]#
```

Figure 30 - TeMIP SA component un-installation completion

Chapter 3

TeMIP Service Adapter Configuration

The configuration file of TSC sets the configuration for the TeMIP BSM Alarm Forwarder and SiteScope information. There is no other configuration file for TeMIP SA.

Refer to “*HP TeMIP Service Console Installation & Configuration Guide*” for the configuration.

Chapter 4

TeMIP Service Adapter operation

This chapter describes how to operate the TeMIP Service Adapter.

As TeMIP Service Adapter is a subset of TSC, for more TSC operation including the TeMIP BSM Alarm Forwarder please refer to TSC documents.

4.1 Start/Stop Service Adapter

The TeMIP Service Adapter is hosted by SiteScope and it is therefore operated (start, stop...) as part of the overall SiteScope module.

- Refer to “*HP SiteScope Deployment Guide*” for detailed information about SiteScope operation.

Chapter 5

TeMIP Service Adapter troubleshooting

This chapter presents the information needed to troubleshoot the TeMIP Service Adapter.

5.1 Problem encountered during installation

The installer creates a file named “InstallationStatus” in the installation directory during installation of the SQM Service Adapter, Data Source Adapter and during installation of the Service Adapter. The content of this file is the string “SUCCESS” in case of successful installation.

The installer logs SA installation information in the directory <TeMIP SA>\log\:

1. `install_anywhere.log`: this file provides the status of the different steps (including the custom actions) executed during the installation
2. `temip_ma_install.log`: this file provides detailed information about the execution of the custom actions

In case of problem during the installation of a component, the user can first look at the `install_anywhere.log` file and search for an execution step with a failed status. If the failed step is a custom action, then the specific file (`temip_ma_install.log`) provides detailed information about the reason of the failure.

5.2 Problem encountered during operation

The TeMIP Service Adapter is hosted by SiteScope and it is therefore troubleshoot as part of the overall SiteScope module.

Refer to HP SiteScope documents for detailed information about SiteScope troubleshooting.