

HP Select Audit Software

for the Windows®, HP-UX®, Linux® and Solaris® operating system

Software Version: 1.02

LDAP Integration Guide

Document Release Date: July 2007

Software Release Date: July 2007



Legal Notices

Warranty

The only warranties for HP products and services are set forth in the express warranty statements accompanying such products and services. Nothing herein should be construed as constituting an additional warranty. HP shall not be liable for technical or editorial errors or omissions contained herein.

HP provides third-party products, software, and services that are not HP Branded “AS IS” without warranties or representations of any kind from HP, although the original manufacturers or third party suppliers of such products, software and services may provide their own warranties, representations or conditions. By using this software you accept the terms and conditions.

The information contained herein is subject to change without notice.

Restricted Rights Legend

Confidential computer software. Valid license from HP required for possession, use or copying. Consistent with FAR 12.211 and 12.212, Commercial Computer Software, Computer Software Documentation, and Technical Data for Commercial Items are licensed to the U.S. Government under vendor's standard commercial license.

Copyright Notices

© Copyright 2006- 2007 Hewlett-Packard Development Company, L.P.

Trademark Notices

HP Select Audit includes software developed by third parties. The software HP Select Audit uses includes:

- ANTLR Copyright 2005 Terrence Parr.
- commons-logging from the Apache Software Foundation.
- Install Anywhere, Copyright 2004 Zero G Software, Inc.
- Jasper Decisions Copyright 2000-2006 JasperSoft Corporation.
- JavaScript Tree, Copyright 2002-2003 Geir Landro.
- Legion of the Bouncy Castle developed by Bouncy Castle.
- log4J from the Apache Software Foundation.
- Microsoft SQL Server 2005 JDBC Driver
- OpenAdaptor from the Software Conservancy.
- Oracle JDBC Thin Driver
- Quartz, Copyright 2004 - 2005 OpenSymphony
- spring-framework from the Apache Software Foundation.
- Tomahawk from the Apache Software Foundation.
- treeviewjavascript from GubuSoft.
- Xalan-Java from the Apache Software Foundation.
- Xerces-Java version from the Apache Software Foundation.

Please check the <install_dir>/3rd_party_license folder for expanded copyright notices from such third party suppliers.

Documentation Updates

This guide's title page contains the following identifying information:

- Software Version number, which indicates the software version.
- Document Release Date, which changes each time the document is updated.
- Software Release Date, which indicates the release date of this version of the software.

To check for recent updates, or to verify that you are using the most recent edition of a document, go to:

http://ovweb.external.hp.com/lpe/doc_serv/

You will also receive updated or new editions if you subscribe to the appropriate product support service. Contact your HP sales representative for details.

Support

You can visit the HP software support web site at:

www.hp.com/go/hpsoftwaresupport

HP Software online support provides an efficient way to access interactive technical support tools. As a valued support customer, you can benefit by using the support site to:

- Search for knowledge documents of interest
- Submit and track support cases and enhancement requests
- Download software patches
- Manage support contracts
- Look up HP support contacts
- Review information about available services
- Enter into discussions with other software customers
- Research and register for software training

Most of the support areas require that you register as an HP Passport user and sign in. Many also require a support contract.

To find more information about access levels and HP Passport, go to:

http://h20230.www2.hp.com/new_access_levels.jsp

To find more information about HP Passport, go to:

<http://h20229.www2.hp.com/passport-registration.html>

Contents

1	Provisioning Select Audit Users Using Select Identity	7
	Setting Up SunONE Directory as the Default LDAP Directory in WebLogic Server	7
	Configuring an External LDAP Server Post-installation.....	8
	Setting Up SunONE Directory as the User Registry in WebSphere Server.....	8
	Provision Select Audit Users Using Select Identity.....	9

1 Provisioning Select Audit Users Using Select Identity

This guide contains instructions for provisioning HP Select Audit software users using Select Identity. It contains the following topics:

- [Setting Up SunONE Directory as the Default LDAP Directory in WebLogic Server](#) on page 7
- [Setting Up SunONE Directory as the User Registry in WebSphere Server](#) on page 8
- [Provision Select Audit Users Using Select Identity](#) on page 9

Setting Up SunONE Directory as the Default LDAP Directory in WebLogic Server

In the following steps, <Audit Root> represents the install directory. Replace <Audit Root> with <install_dir>.

- 1 Open the WebLogic Admin Console and go to your security realm (by default, **myRealm**).
- 2 Click **Providers** → **Authentication** and install a new provider. For example, if you are using SunONE 5.2, select the **IPlanet Authenticator**.
- 3 Make sure your directory server already has the following five groups (`objectclass groupOfUniqueNames`) in your LDAP location:
 - Administrators
 - Select Audit Administrators
 - Select Audit Auditors
 - Select Audit Users
 - Select Audit Report Developers
- 4 Make sure your directory server already has the WebLogic administrator user (normally the user name is `weblogic`). This user should be a member of two groups; the **Administrators** and the **Select Audit Administrators**.
- 5 In the **Users** and **Groups** tabs, leave the defaults in place but change the **User Base DN** to the top level of your users, for example, `ou=People, ou=hillcrest, dc=can, dc=hp, dc=comand`. Change the **Group Base DN** to the top level of your groups, for example, `ou=Groups, ou=hillcrest, dc=can, dc=hp, dc=com`.
 - ▶ In this document, HP assumes all the users in the directory server are using `uid` as the RDN. Otherwise you should change the **User Name Attribute** in the **Users** tab to your RDN attribute.

- 6 If you have group membership loops, for example, group A is a member of group B, group B is a member of group C, and group C is a member of group A, you should limit the group search level to avoid indefinitely group membership searches. In the **Details** tab, change **Group Membership Searching** to `limited`, and specify the **Max Group Membership Search Level** to be a limited number, for example, 5.
- 7 After setting up your LDAP provider, click the garbage can beside the **DefaultAuthenticator** to remove it.
- 8 Go into your user management and check if your list of users is showing up. If so, you have done everything correctly.
- 9 Restart your WebLogic server.

After performing these steps, you are ready to setup Select Identity to provision your users using the procedure described in [Provision Select Audit Users Using Select Identity](#) on page 9.

Configuring an External LDAP Server Post-installation

Do the following to configure an external LDAP server after installation:

- 1 Follow the steps for setting up the SunONE directory as given above.
- 2 When you have finished, open `<install_dir>/dist/reporting/ReportServer/WEB-INF/conf/directory.xml` and change the value of `<providerName>` from `DefaultAuthenticator` to the name of your newly-created authentication provider.
- 3 Restart the server for the change to take effect.

Setting Up SunONE Directory as the User Registry in WebSphere Server

In the following steps, `<Audit Root>` represents the install directory. Replace `<Audit Root>` with `<install_dir>`.

- 1 Open the WebSphere Administrative Console and click **Security** → **Global Security**.
- 2 Do the following in the **General Properties** section:
 - a Select the **Enable global security** and **Enforce Java 2 security** check boxes.
 - b Select **Lightweight Third Party Authentication (LTPA)** from the **Active authentication mechanism** drop-down list.
 - c Select **Lightweight Directory Access Protocol (LDAP) user registry** from the **Active user registry** drop-down list.
- 3 Click **LDAP** under **User registries**.
- 4 Enter the following information in the **General Properties** section:

Server user ID:	The WebSphere administrator user ID.
Server user password:	The WebSphere administrator user password.
Type:	Select Custom .
Host:	The host name/IP address of the directory server.

- Port:** The port of the directory server.
- Base distinguished name:** The base DN of the top level of your user registry which contains both the users and the groups.
- Bind distinguished name:** The DN used to login to the directory server.
- Bind password:** The password used to login to the directory server.
- 5 Click **Additional Properties** → **Advanced Lightweight Directory Access Protocol (LDAP) user registry settings**.
 - 6 Enter the following information:

User filter: `(&(uid=%v)(objectclass=inetOrgPerson))`

Group filter: `(&(cn=%v)(objectclass=groupofuniqueNames))`

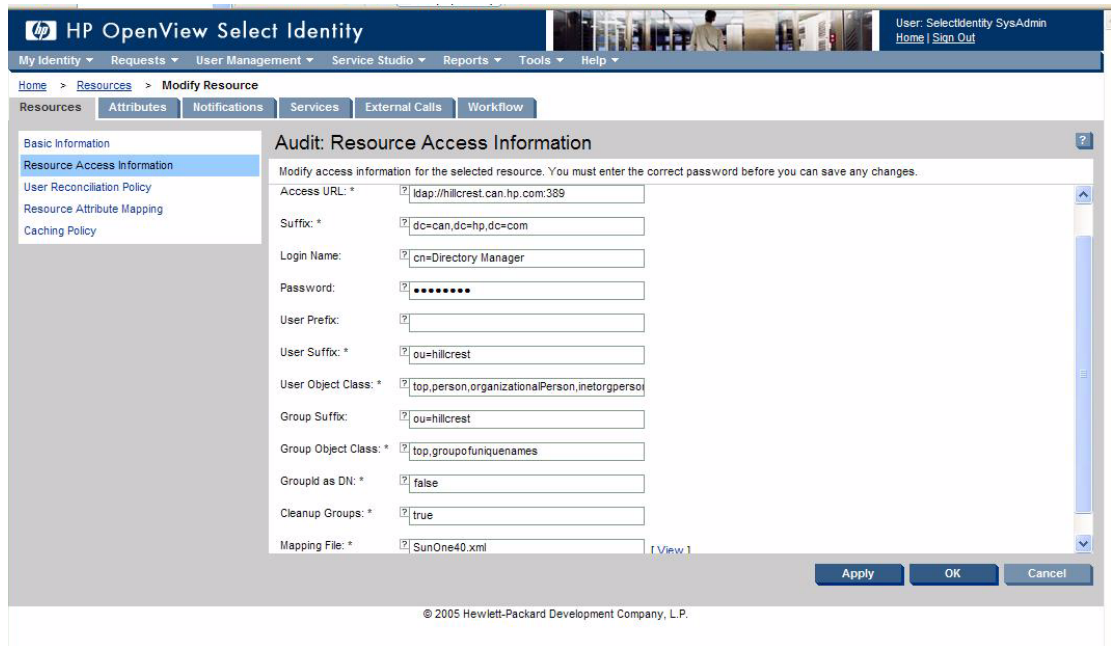
User ID map: `inetOrgPerson:uid`

Group ID map: `groupofuniqueNames:cn`

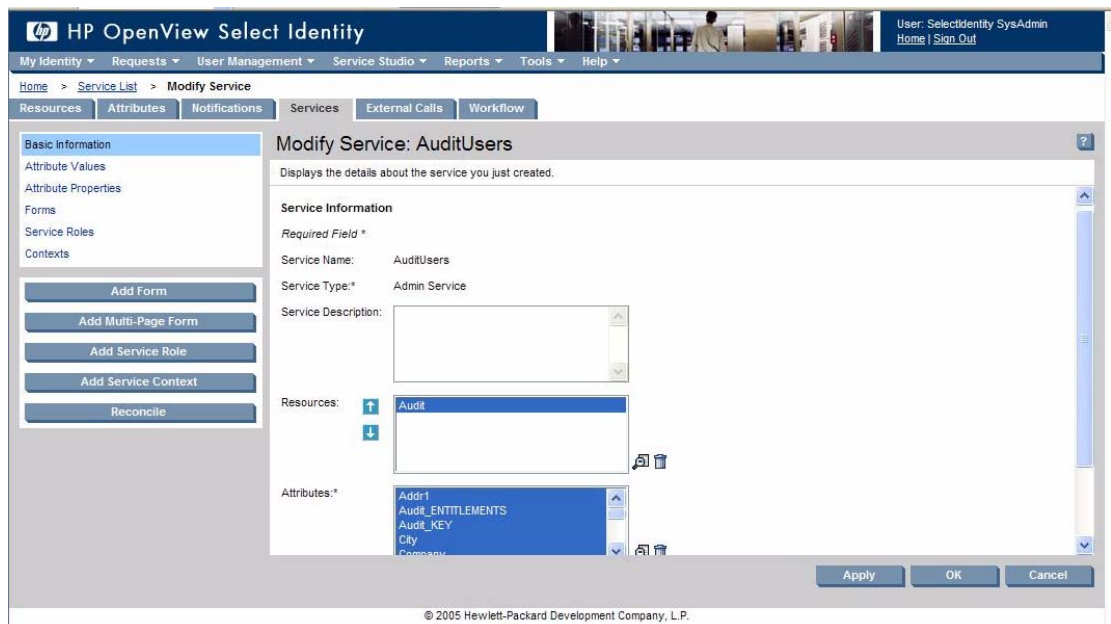
Group member map: `groupofuniqueNames:uniqueMember`
 - 7 Apply all the settings.
 - 8 Restart the WebSphere server.

Provision Select Audit Users Using Select Identity

- 1 Start with an empty Select Audit LDAP.
- 2 Create the Select Audit Administrators, Select Audit Auditors and Select Audit Users groups (`ObjectClass=groupOfUniqueNames`).
- 3 In Select Identity, create a new resource pointing to the Audit LDAP, for example Audit.
- 4 In **Resource Access Information** specify the Audit LDAP server name, port, relative and parent DN of the users' location.
 - ▶ In the default mapping file `SunOne40.xml`, all the users are provisioned using `uid` as the RDN. If you need to use a different RDN, you should change the `SunOne40.xml` file, and also do the following:
 - In WebLogic, change the **User Name Attribute** in the **Users** tab in your Weblogic IPlanet Authenticator. See [step 5](#) on page 7.
 - In WebSphere, change the **User filter** and **User ID map** in the **Advanced Lightweight Directory Access Protocol (LDAP) user registry settings**. See [step 5](#) on page 9.



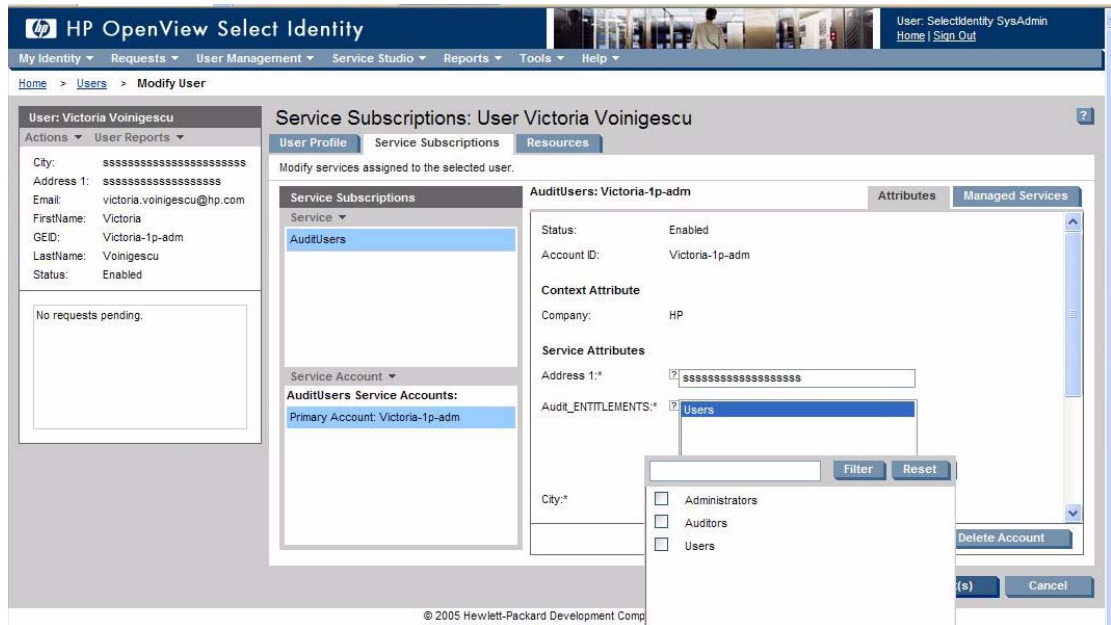
5 In Select Identity, create a new service that uses the resource created in step 4.



6 In Select Identity, do one of the following:

- Create new Select Identity users subscribing to the newly-created AuditUsers service.
- Subscribe existing Select Identity users to the newly-created AuditUsers service.

Make sure you create the users in one of the Administrators, Auditors or Users groups, based on the choice of Audit_Entitlements, as shown below.



Once the users subscribe to this service, they will be provisioned on the Select Audit LDAP.

