

Peregrine

# AssetCenter 4.3

---

## Physical Data Models



© Copyright 2004 Peregrine Systems, Inc.  
All Rights Reserved.

Information contained in this document is proprietary to Peregrine Systems, Incorporated, and may be used or disclosed only with written permission from Peregrine Systems, Inc. This manual, or any part thereof, may not be reproduced without the prior written permission of Peregrine Systems, Inc. This document refers to numerous products by their trade names. In most, if not all, cases these designations are claimed as Trademarks or Registered Trademarks by their respective companies.

Peregrine Systems<sup>®</sup> and AssetCenter<sup>®</sup> are trademarks of Peregrine Systems, Inc. or its subsidiaries.

This document and the related software described in this manual are supplied under license or nondisclosure agreement and may be used or copied only in accordance with the terms of the agreement. The information in this document is subject to change without notice and does not represent a commitment on the part of Peregrine Systems, Inc. Contact Peregrine Systems, Inc., Customer Support to verify the date of the latest version of this document.

The names of companies and individuals used in the sample database and in examples in the manuals are fictitious and are intended to illustrate the use of the software. Any resemblance to actual companies or individuals, whether past or present, is purely coincidental.

If you need technical support for this product, or would like to request documentation for a product for which you are licensed, contact Peregrine Systems, Inc. Customer Support by email at [support@peregrine.com](mailto:support@peregrine.com).

If you have comments or suggestions about this documentation, contact Peregrine Systems, Inc. Technical Publications by email at [doc\\_comments@peregrine.com](mailto:doc_comments@peregrine.com).

This edition applies to version 4.3 of the licensed program

AssetCenter

# Table of Contents

---

<b>Preface</b> . . . . .	<b>5</b>
Tables . . . . .	5
Links . . . . .	6
<b>Chapter 1. Portfolio</b> . . . . .	<b>9</b>
Models . . . . .	10
Portfolio items . . . . .	11
Assets . . . . .	12
Assets linked to the procurement cycle . . . . .	13
Computers . . . . .	14
Telephones . . . . .	15
Ports and connections . . . . .	16
<b>Chapter 2. Procurement cycle</b> . . . . .	<b>17</b>
Procurement cycle . . . . .	18
Purchase requests . . . . .	19
Orders . . . . .	20
Receptions . . . . .	21
Invoices . . . . .	22
Assets to be returned . . . . .	23

<b>Chapter 3. Contracts</b> . . . . .	<b>25</b>
Contracts . . . . .	26
<b>Chapter 4. Financials</b> . . . . .	<b>27</b>
Budget and expenses . . . . .	28
Chargebacks . . . . .	29
Taxes . . . . .	30
<b>Chapter 5. Cable and Circuit</b> . . . . .	<b>31</b>
Cables and cable devices . . . . .	32
Color codes . . . . .	33
Label rules . . . . .	34
Pair/conductor types . . . . .	35
Cable duties . . . . .	36
Slots . . . . .	37
Topologies . . . . .	38
Topology groups . . . . .	39
Termination-field configurations . . . . .	40
Cable links . . . . .	41
<b>Chapter 6. Administration</b> . . . . .	<b>43</b>
Access to the database . . . . .	44

# Preface

## PREFACE

This guide presents diagrams that correspond to the physical data models in AssetCenter.

Each of these diagrams contains one or more tables used by the modules in AssetCenter.

## Tables

Each of the tables represented in this guide is identified by its SQL name.

Examples:

- The Portfolio items table uses the SQL name **amPortfolio**.
- The Assets table uses the SQL name **amAsset**.
- The Locations table uses the SQL name **amLocation**.
- The Departments and Employees table uses the SQL name **amEmplDept**.

The most important tables in each diagram are shown as the largest.

Examples:

- The Assets table (**amAsset**) in the [Assets](#) [page 12] diagram.

- The Cables table (**amCable**) in the [Cables and cable devices](#) [page 32] diagram.
- The Taxes table (**amTax**) in the [Taxes](#) [page 30] diagram.

## Links

There are three types of links between tables:

- 1-1 links.
- 1-n and n-1 links.
- n-n links.

Type of link	Graphical representation of link
1-1	
1-n (reverse link of of n-1)	
n-n	

Each of the links represented in this guide is identified by its SQL name.

Examples:


- The link going from the Portfolio items table (**amPortfolio**) to the Departments and Employees table (**amEmplDept**) has the SQL name **User**.
- The link going from the Departments and Employees table (**amEmplDept**) to the Portfolio items table (**amPortfolio**) has the SQL name **ItemsUsed**.

 **Note:**

The SQL name of a link assumes that one of the linked tables is the source table and the other is the destination table. Thus, the **User** link between the source table (**amPortfolio**) indicates that the link points to the user record of the destination table (**amEmplDept**). It's reverse link, though, is called **ItemsUsed**. This link points to the records of the assets used by a given user. In this case, the source table is that of departments and employees and the destination table is that of portfolio items.

In an effort not to overload our diagrams, reverse links are not represented. The choice of a link and its reverse link is arbitrary. If you want to find out what the SQL name of a reverse link is:

- 1 Launch AssetCenter Database Administrator.

- 2 Open your database description.
- 3 Select the table of your choice.
- 4 Click .
- 5 Select a link.
- 6 The SQL name of its reverse link is indicated in the **Reverse link** field.

## 1-1 links

This kind of link means that:

- One record in the source table is linked to one record in the destination table.

Example: The **Asset** link between the Computers table (**amComputer**) and the Assets table (**amAsset**) in the [Computers](#) [page 14] diagram. This link indicates that only one computer record can be linked to only one asset record.

## 1-n and n-1 links

A 1-n link means that:

- One record from the source table can be linked to several records in the destination table.
- Several records in the destination table can be linked to one record in the source table.

Example: The **Rents** link between the Contracts table (**amContracts**) and the Contract rents (**amCntrRent**) table in the [Contracts](#) [page 26] diagram. This link indicates that one contract record can be linked to several contract rent records.

A n-1 link means that:

- Several records in the source table can be linked to one record in the destination table.
- One record in the destination table can be linked to several records in the source table.

Example: The **Model** link between the Assets table (**amAsset**) and the Models table (**amModel**) in the [Models](#) [page 10] diagram. This link indicates that several asset records can correspond to the same model record.

## n-n links

This type of link means that:

- Several records in the source table can be linked to several records in the destination table.

Example: The **FuncRights** link between the User profiles table (**amProfile**) and the Functional rights table (**amFuncRight**) in the [Access to the database](#) [page 44] diagram. This link indicates that an asset record can be linked to several functional right records and that a functional right record can be linked to several user profile records.



# 1 | Portfolio

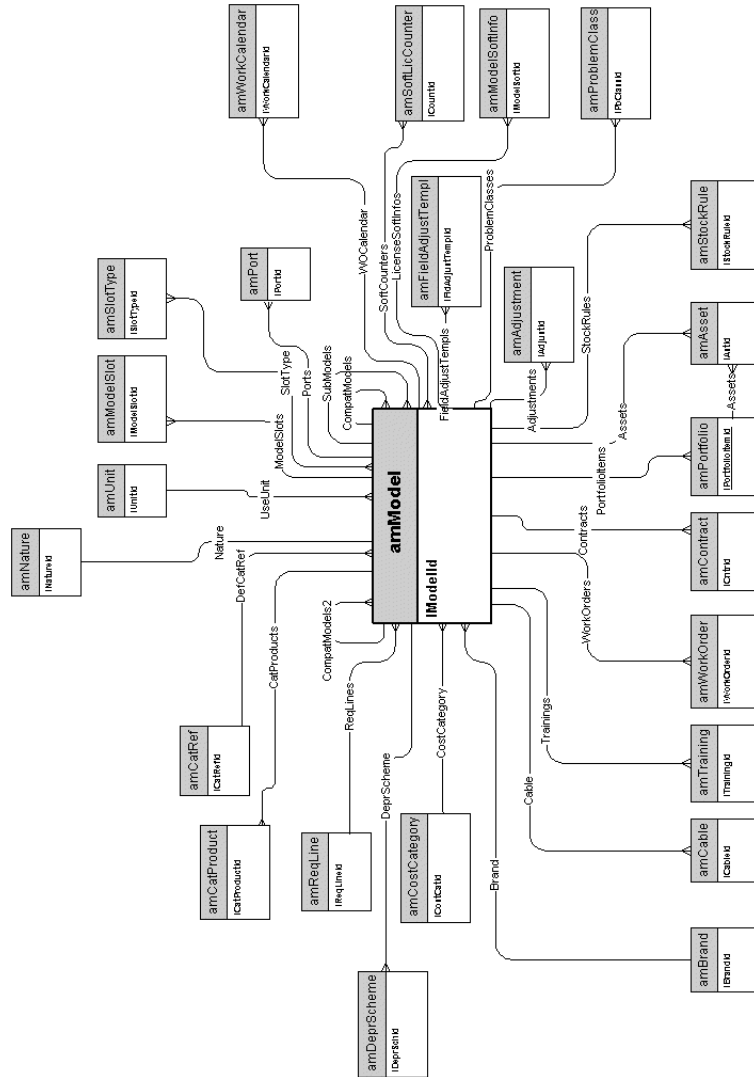
---

## CHAPTER

This chapter presents diagrams of the following physical data models:

- Models [page 10]
- Portfolio items [page 11]
- Assets [page 12]
- Assets linked to the procurement cycle [page 13]
- Computers [page 14]
- Telephones [page 15]
- Ports and connections [page 16]

# Models

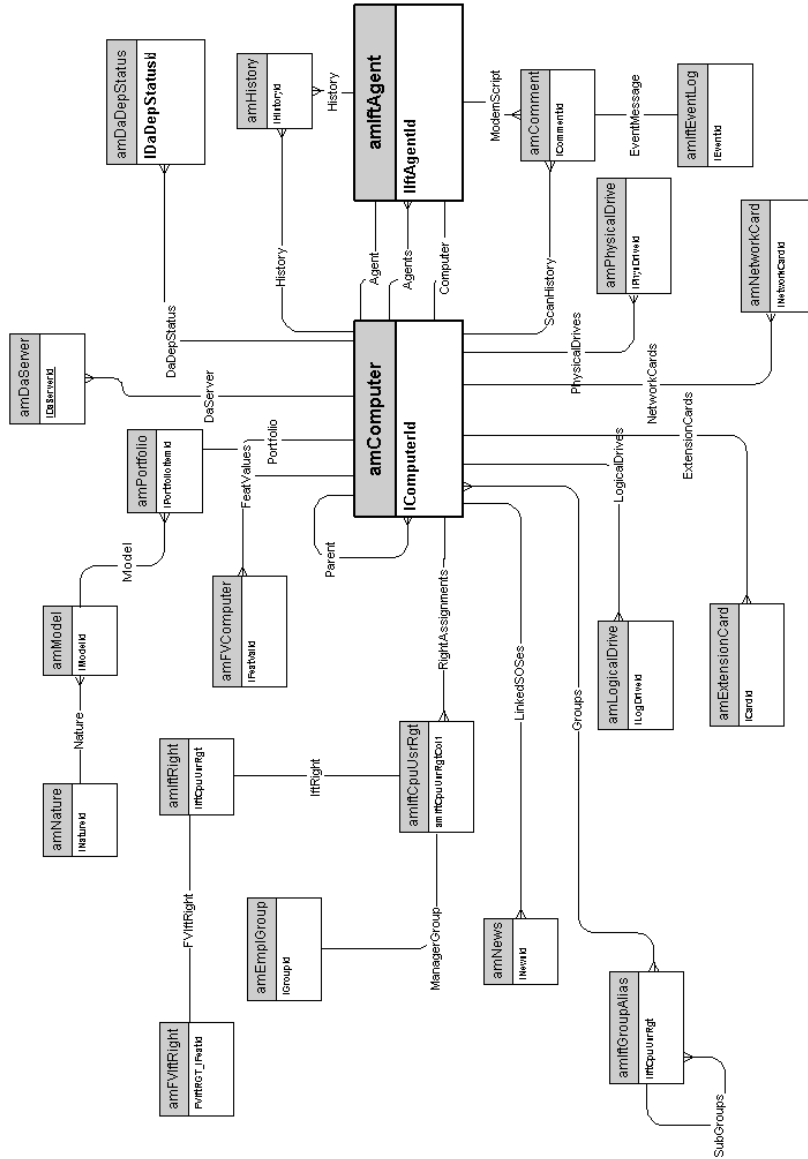




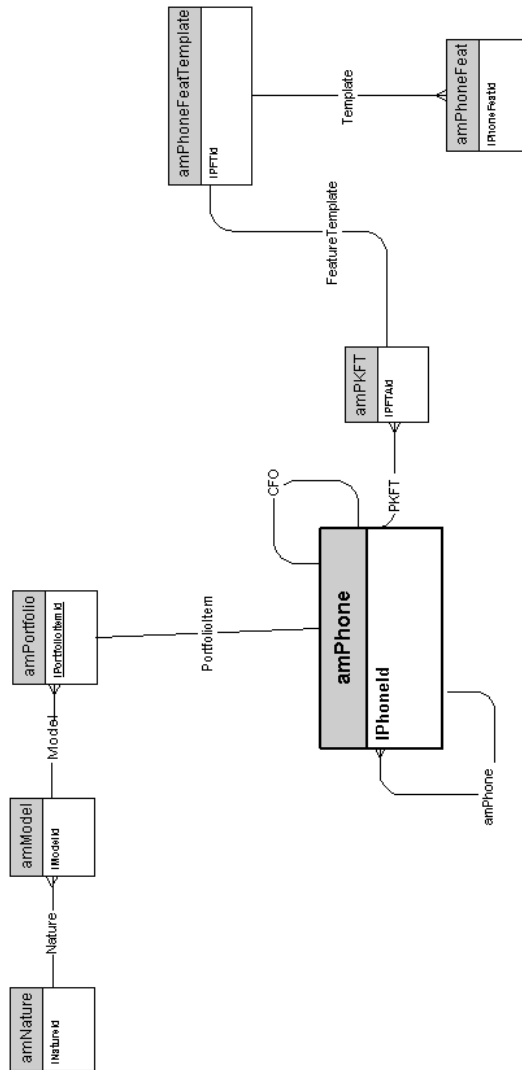




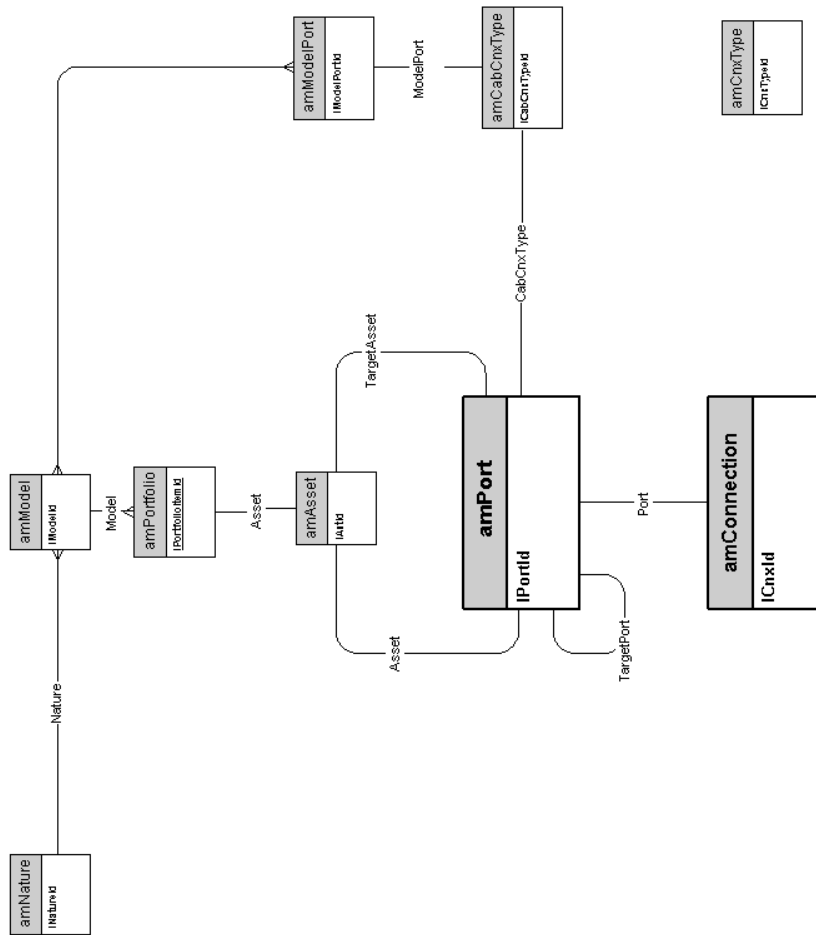
# Computers



# Telephones



# Ports and connections





# 2 | Procurement cycle

---

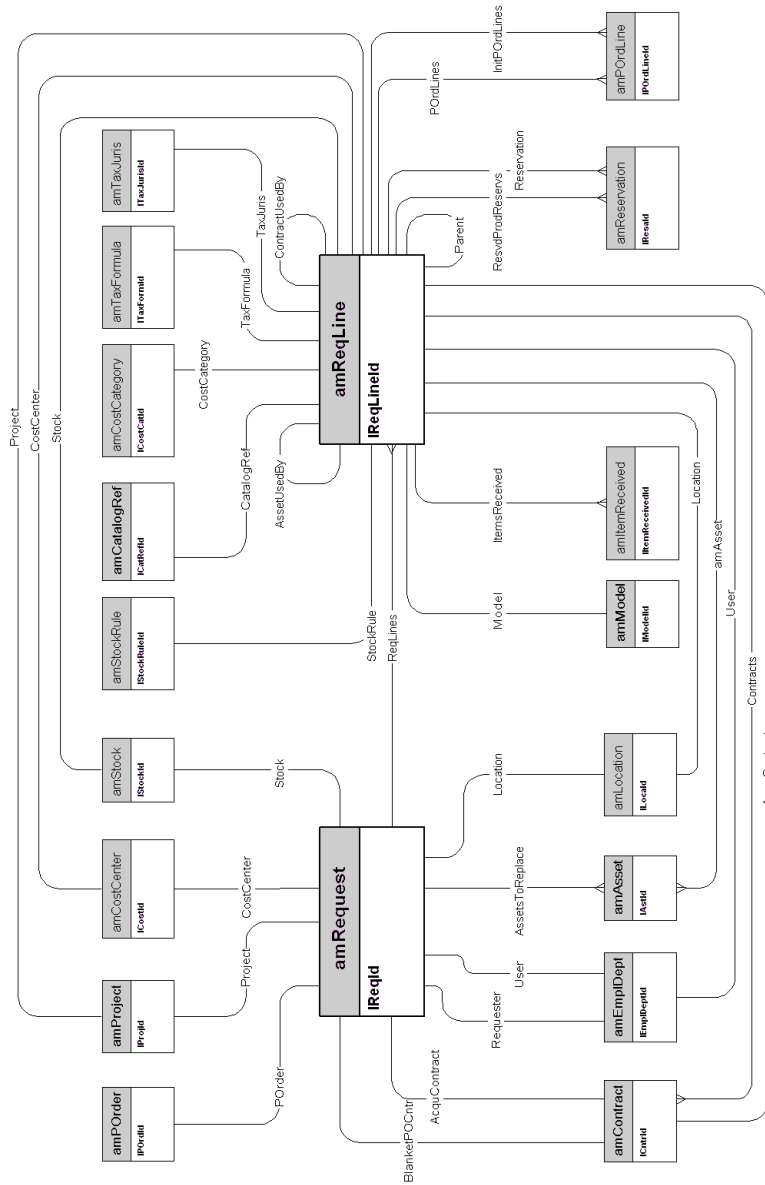
## CHAPTER

This chapter presents diagrams of the following physical data models:

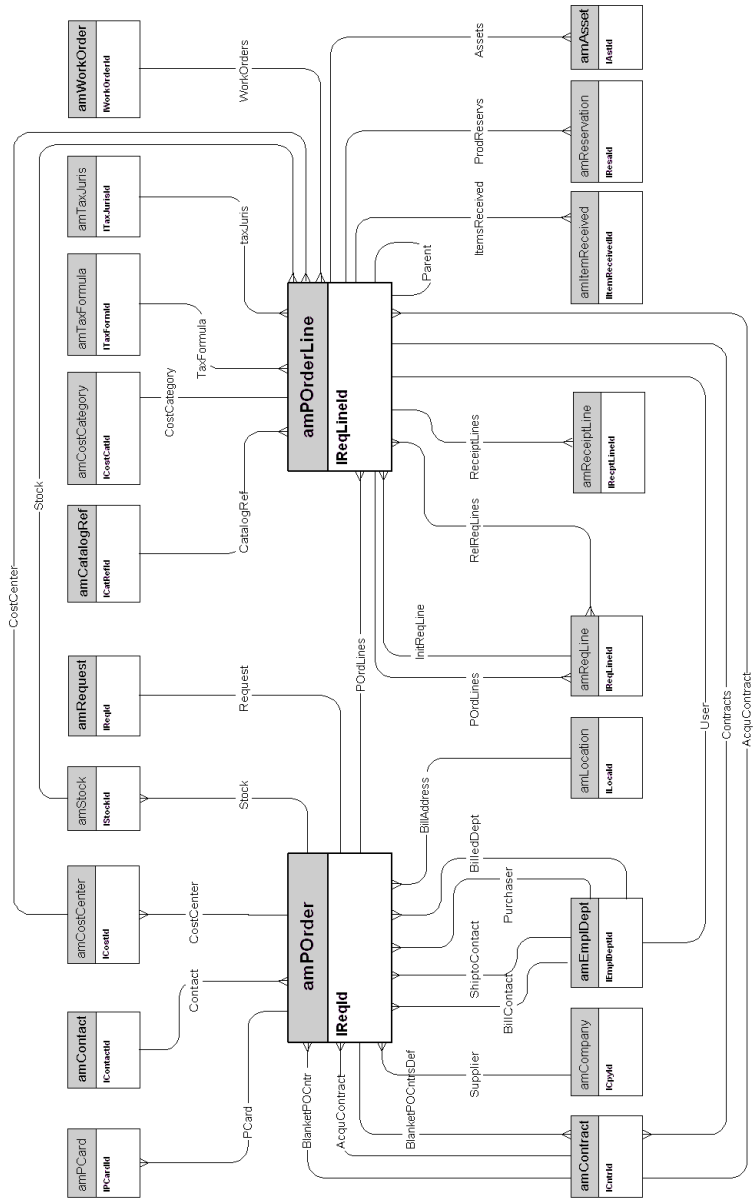
- Procurement cycle [page 18]
- Purchase requests [page 19]
- Orders [page 20]
- Receptions [page 21]
- Invoices [page 22]
- Assets to be returned [page 23]



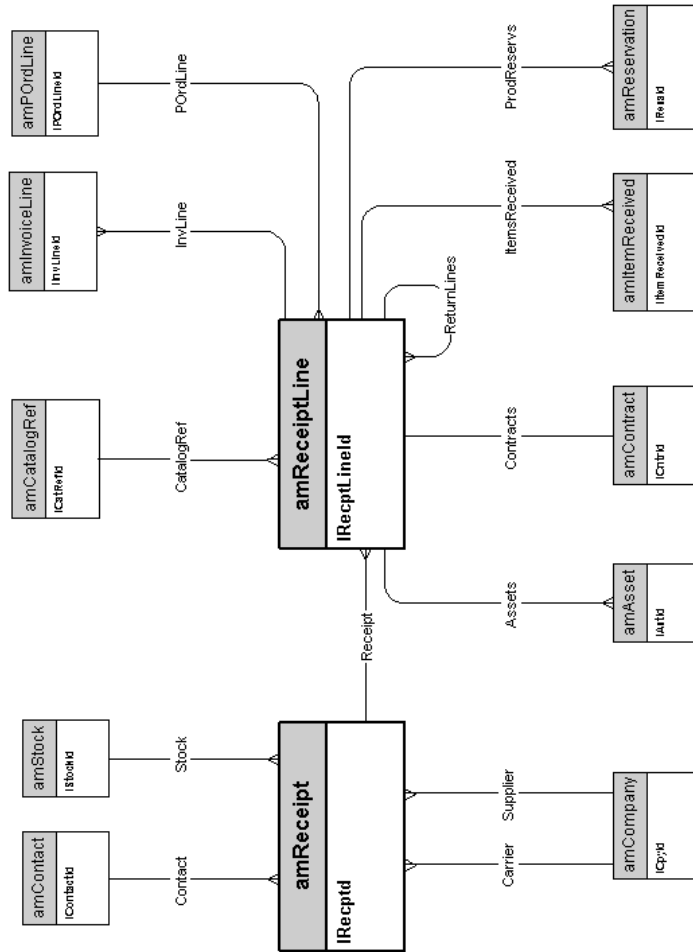
# Purchase requests



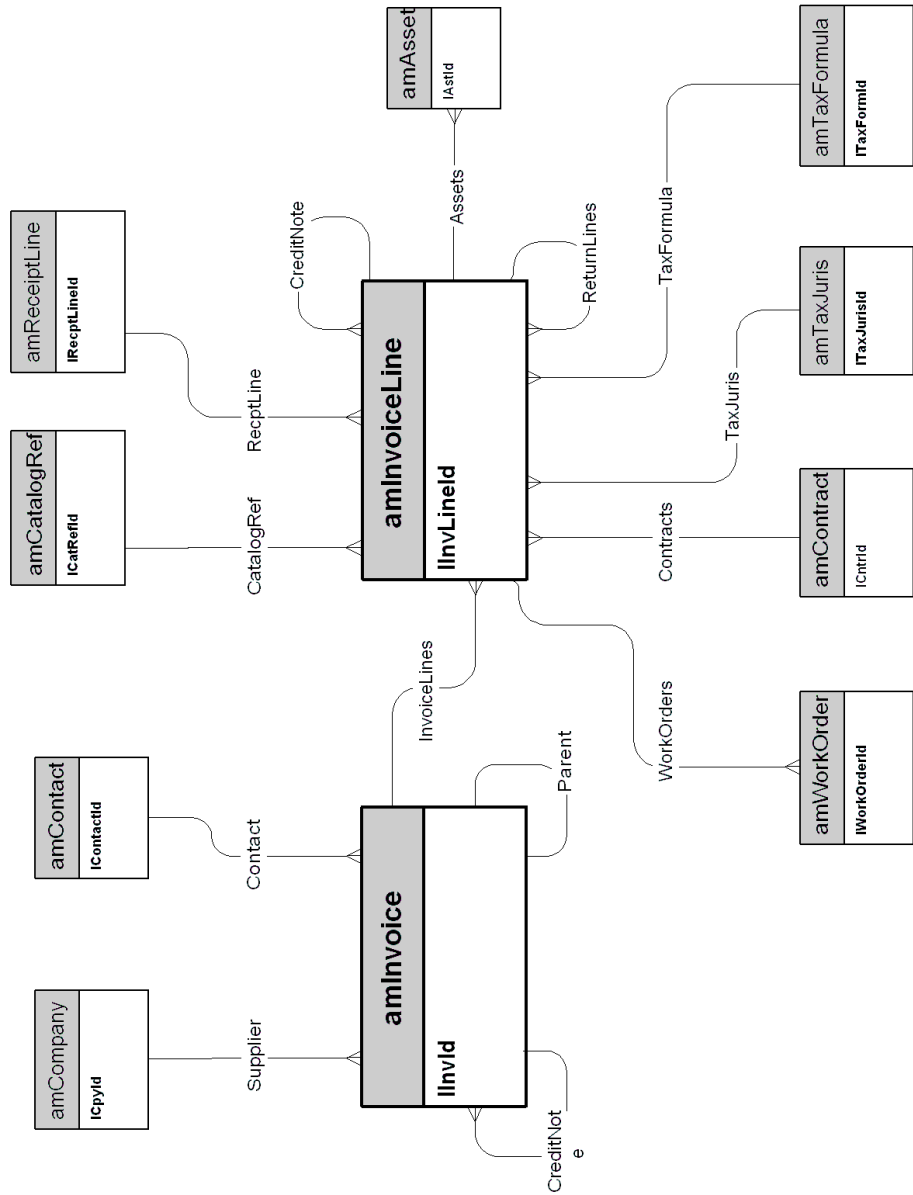
# Orders



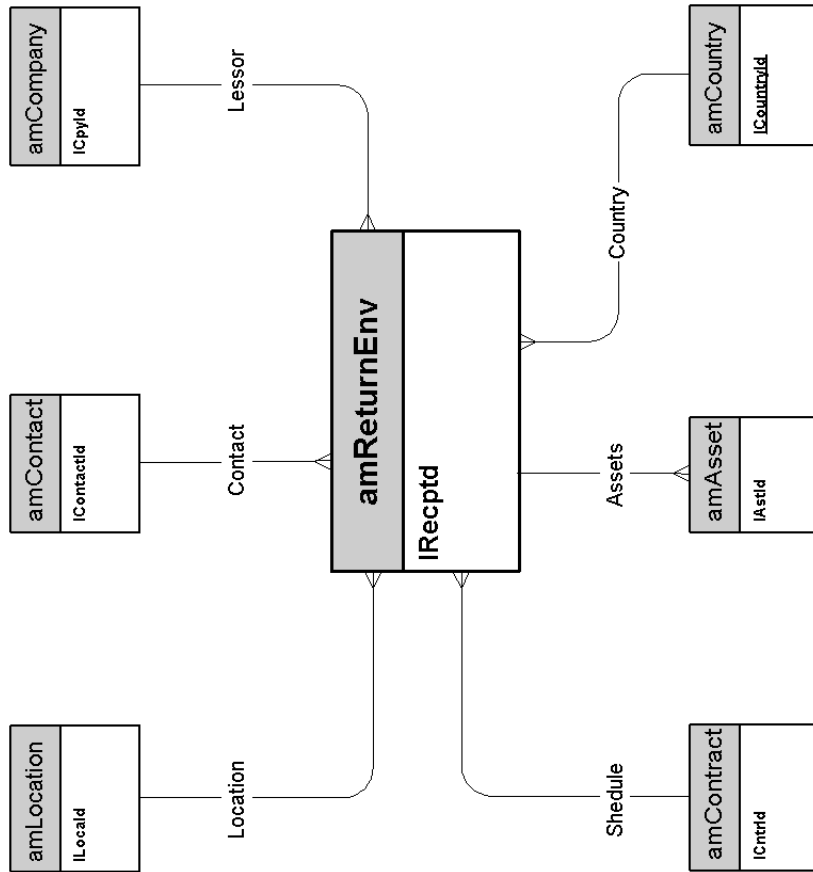
# Receptions



# Invoices



## Assets to be returned







# 3 | Contracts

---

## CHAPTER

This chapter presents the diagram of the following physical data model:

- Contracts [page 26]



# 4 Financials

---

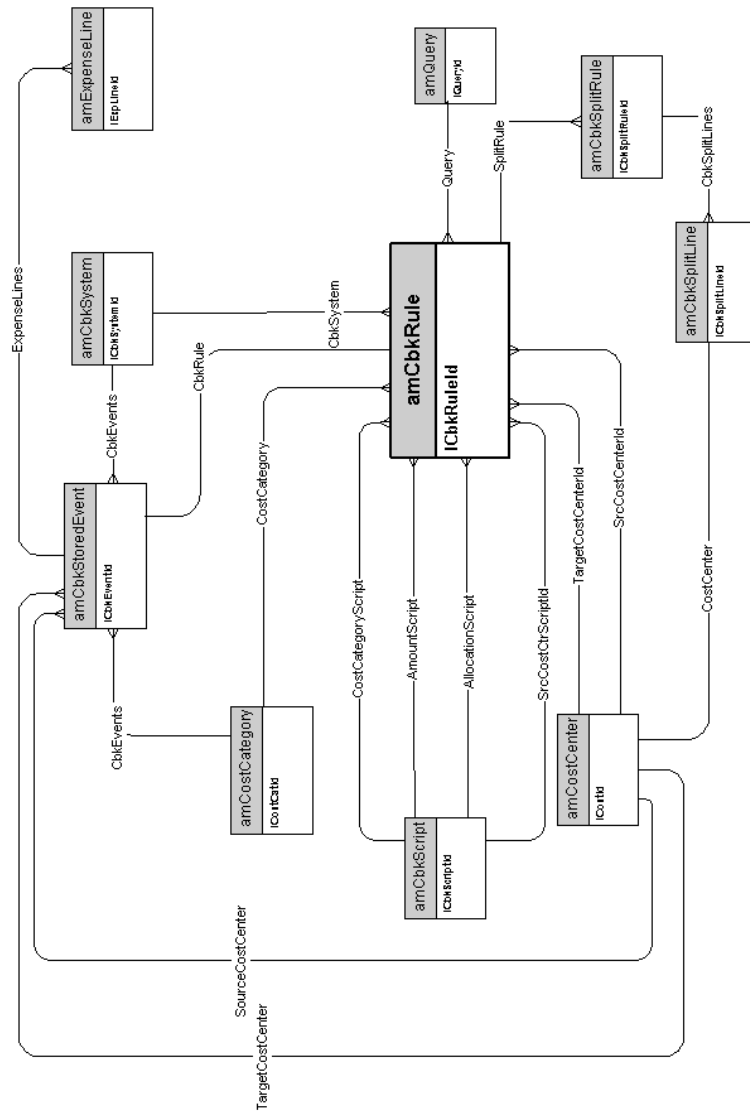
## CHAPTER

This chapter presents diagrams of the following physical data models:

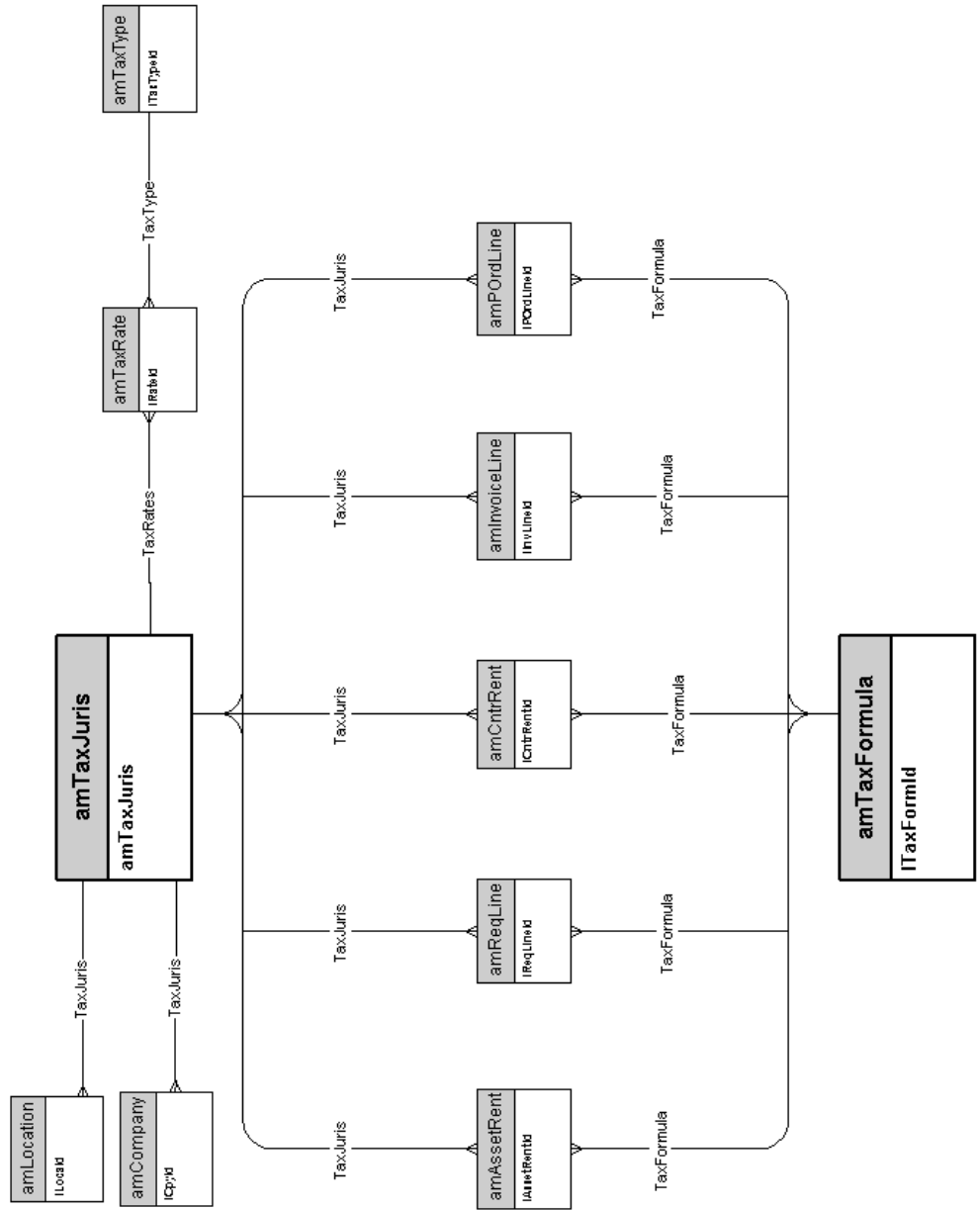
- Budget and expenses [page 28]
- Chargebacks [page 29]
- Taxes [page 30]



# Chargebacks



# Taxes



# 5 | Cable and Circuit

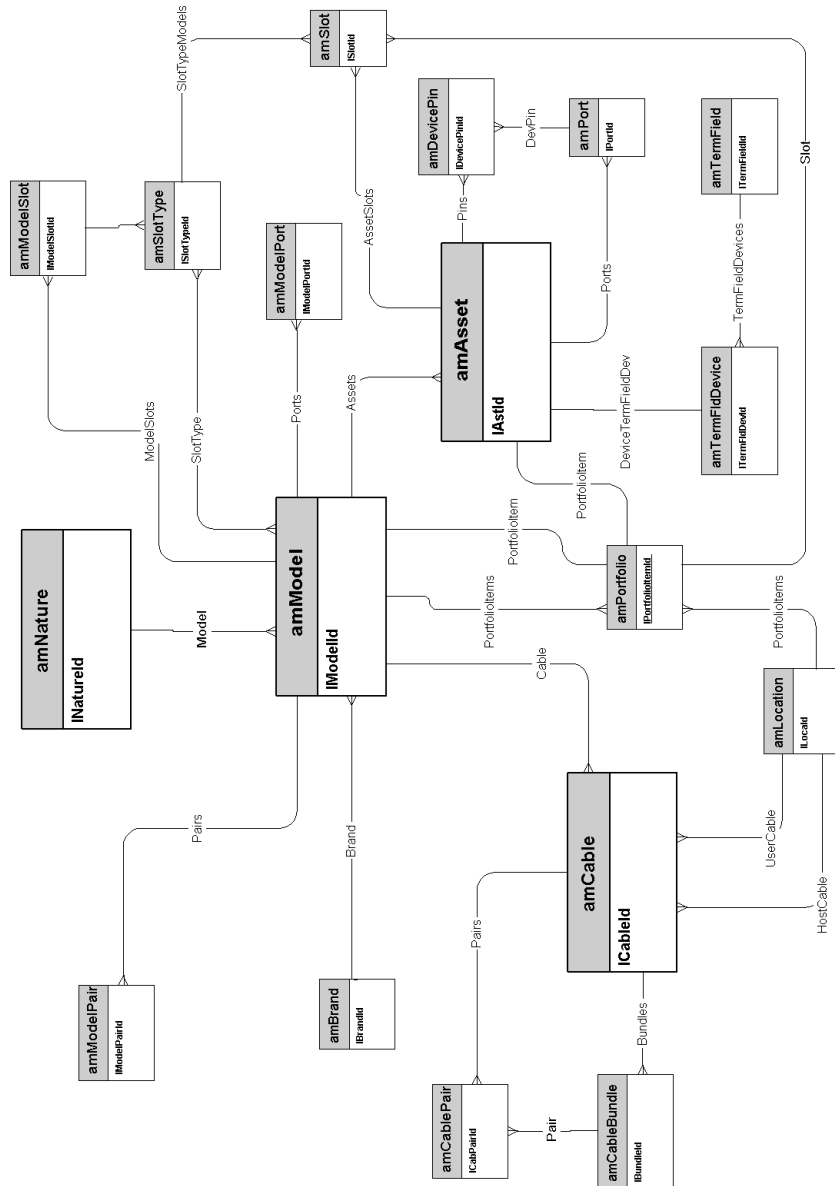
---

## CHAPTER

This chapter presents diagrams of the following physical data models:

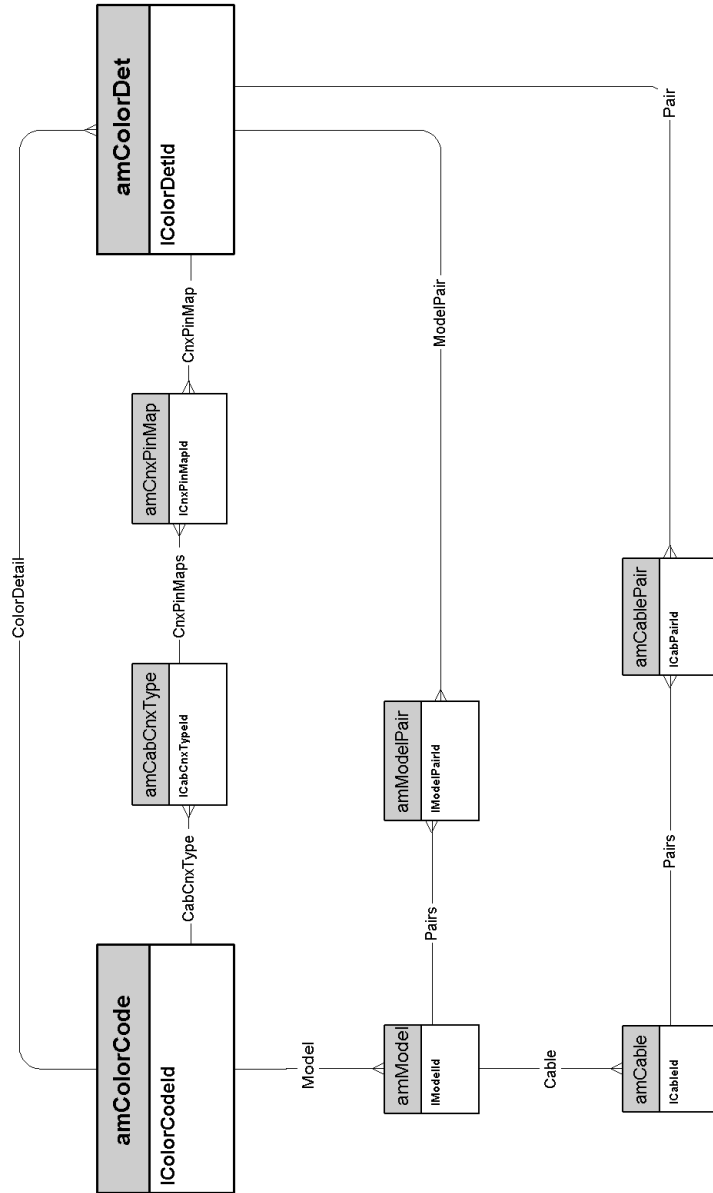
- Cables and cable devices [page 32]
- Color codes [page 33]
- Label rules [page 34]
- Pair/conductor types [page 35]
- Cable duties [page 36]
- Slots [page 37]
- Topologies [page 38]
- Topology groups [page 39]
- Termination-field configurations [page 40]
- Cables and cable devices [page 32]

# Cables and cable devices

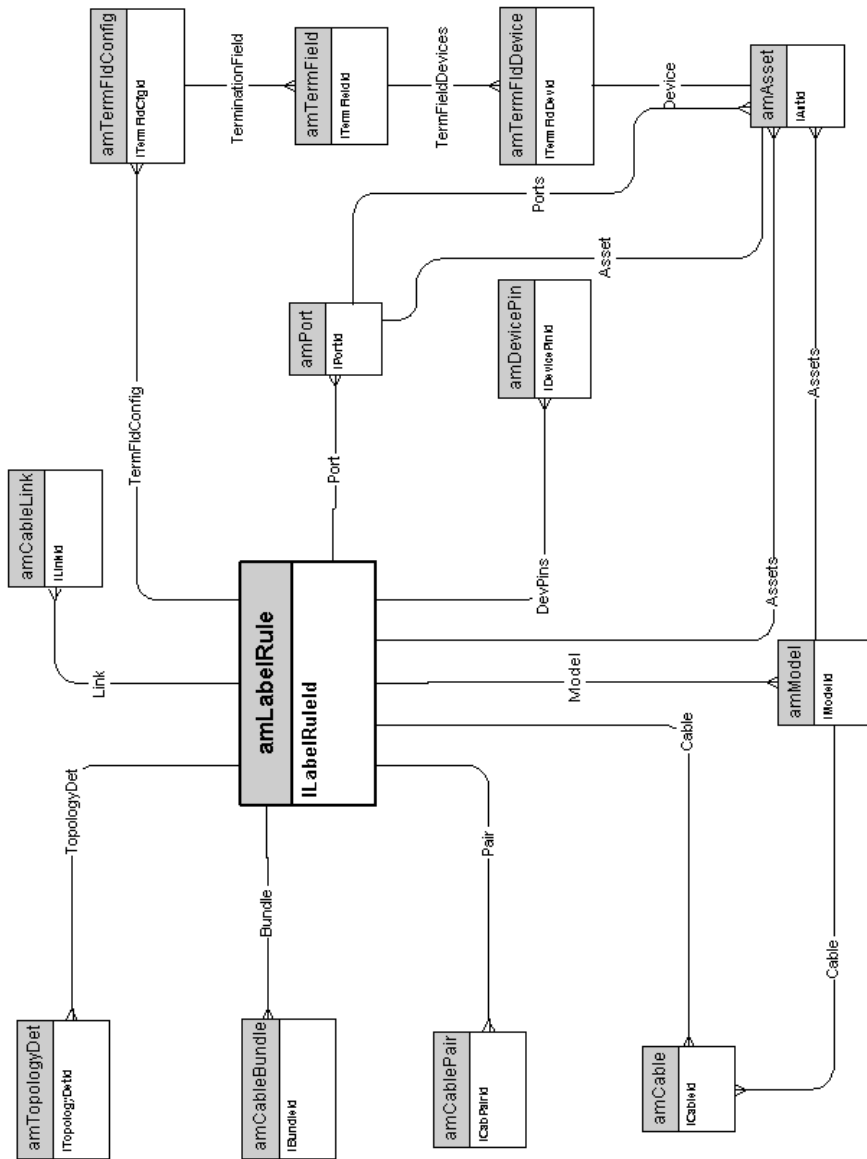




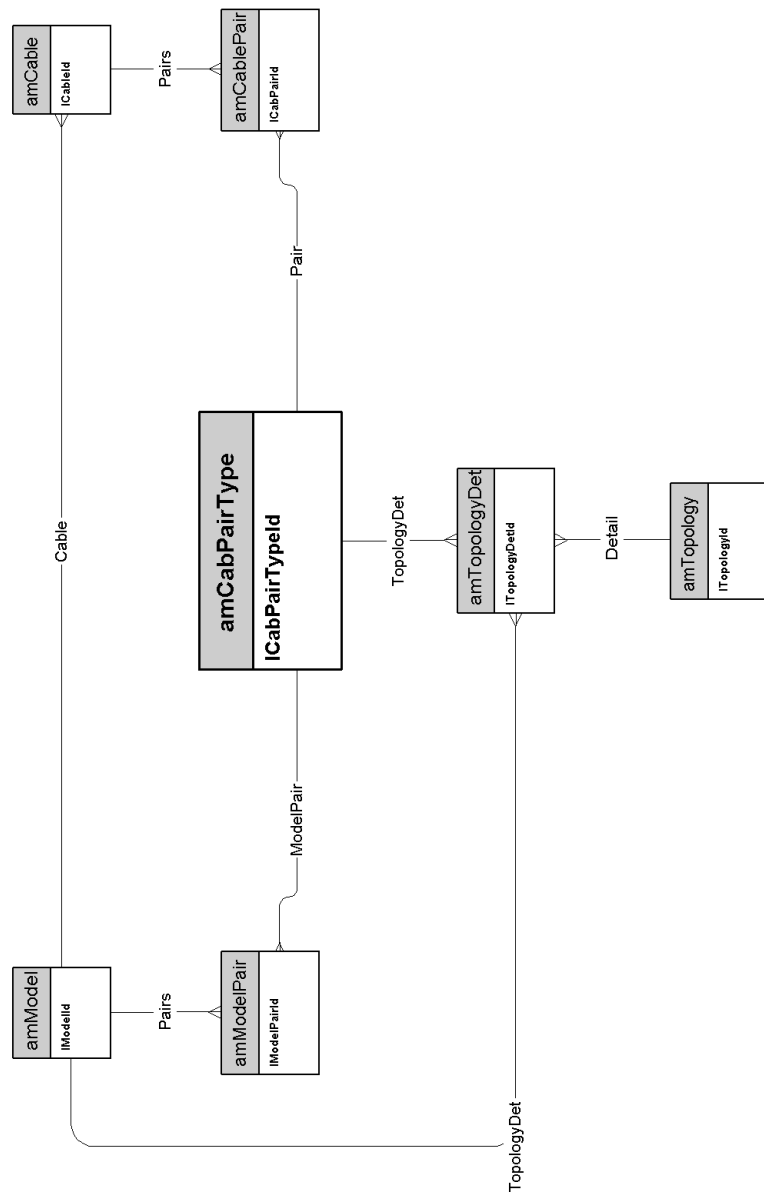
# Color codes



# Label rules

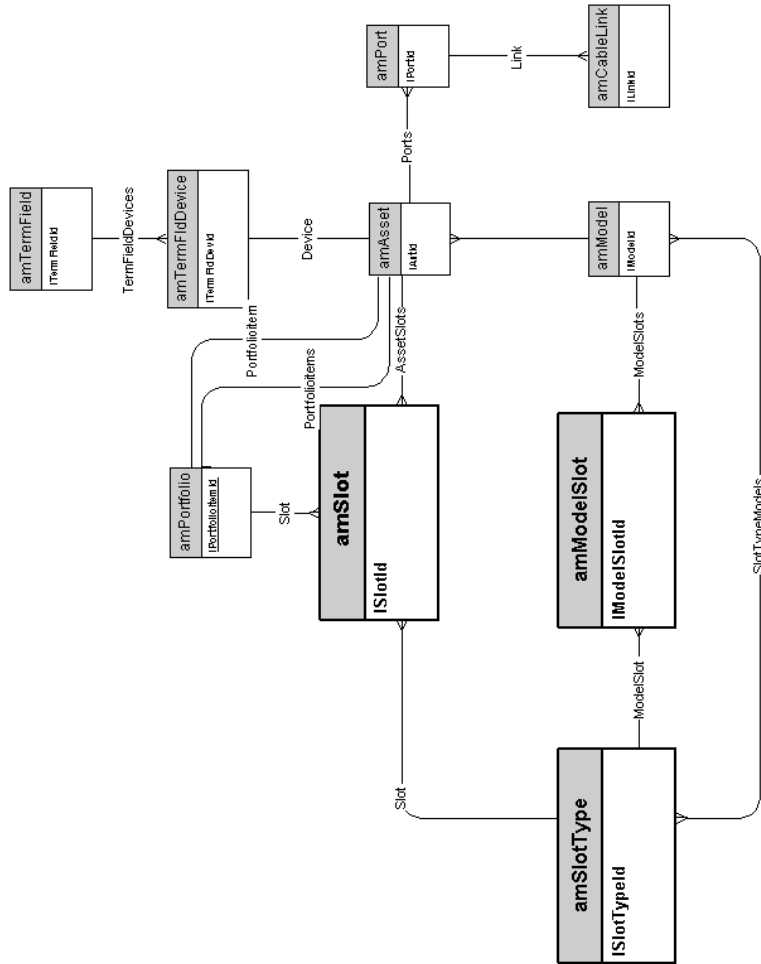


# Pair/conductor types

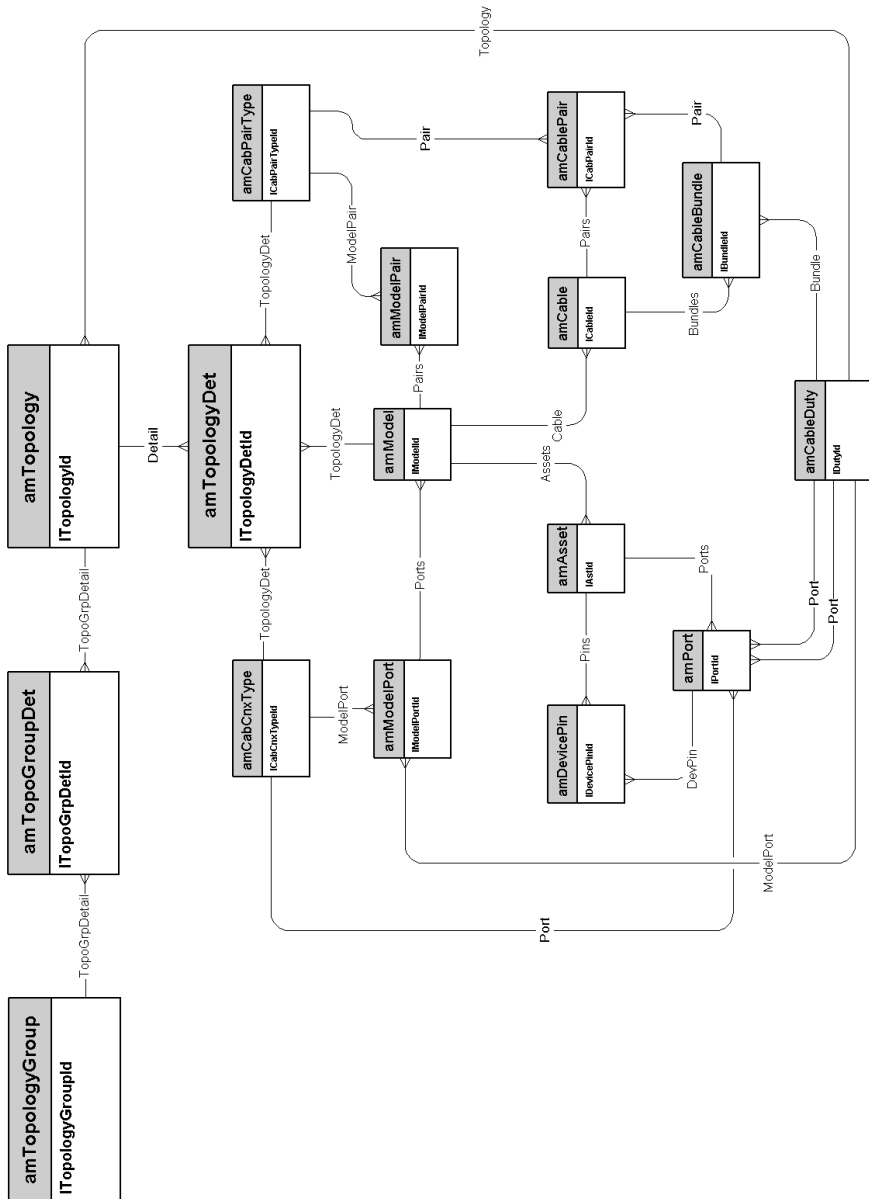




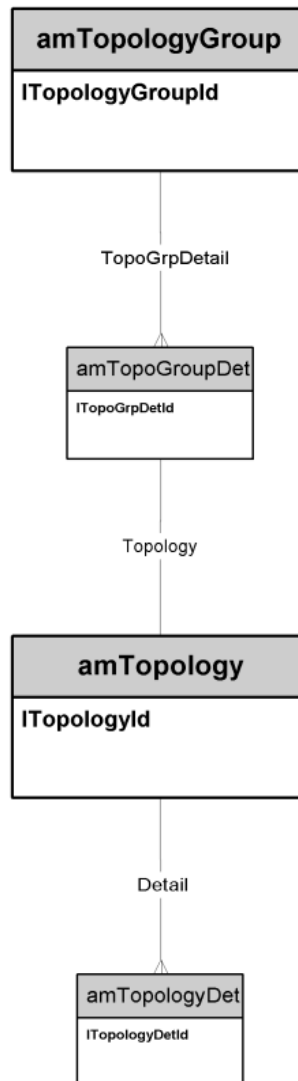
# Slots



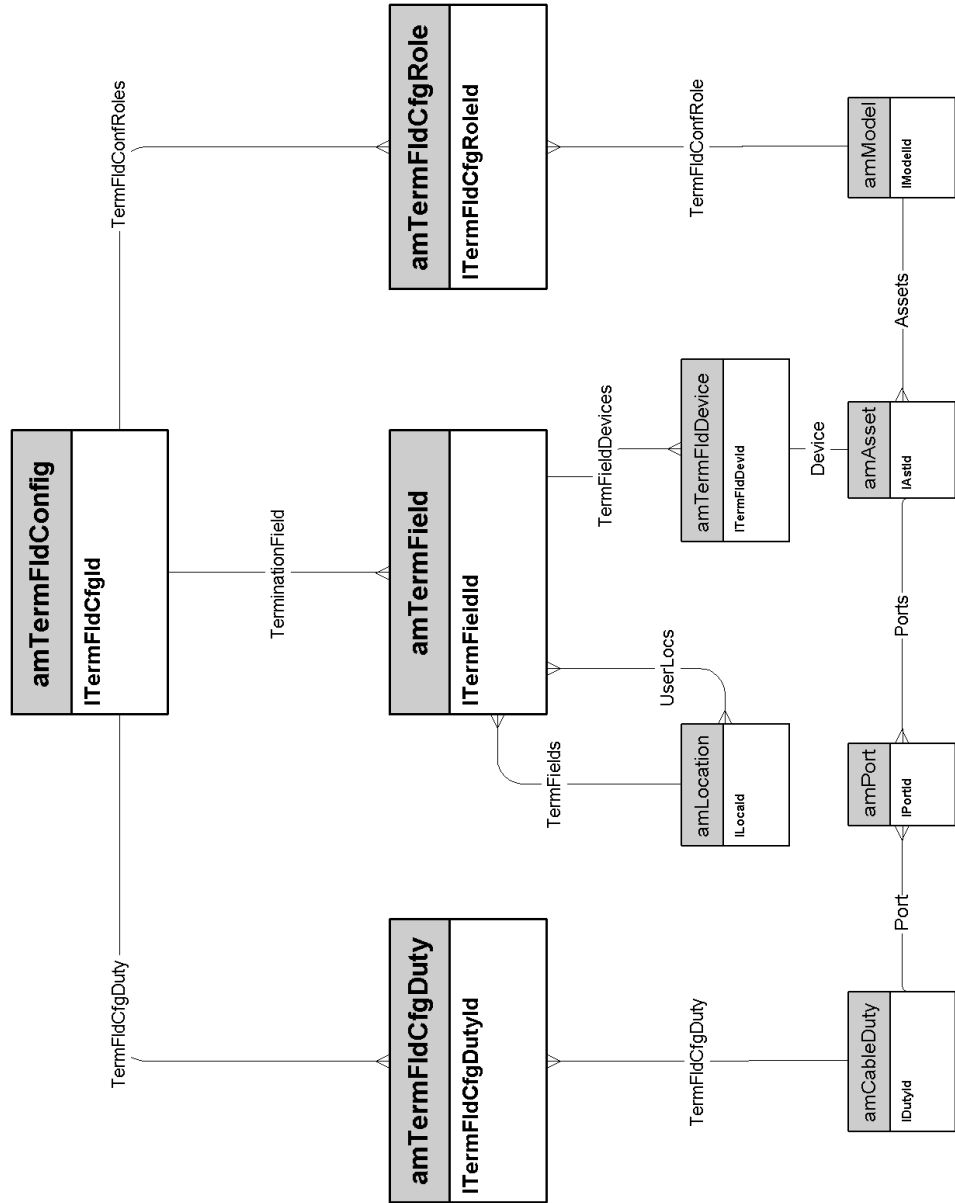
# Topologies



# Topology groups

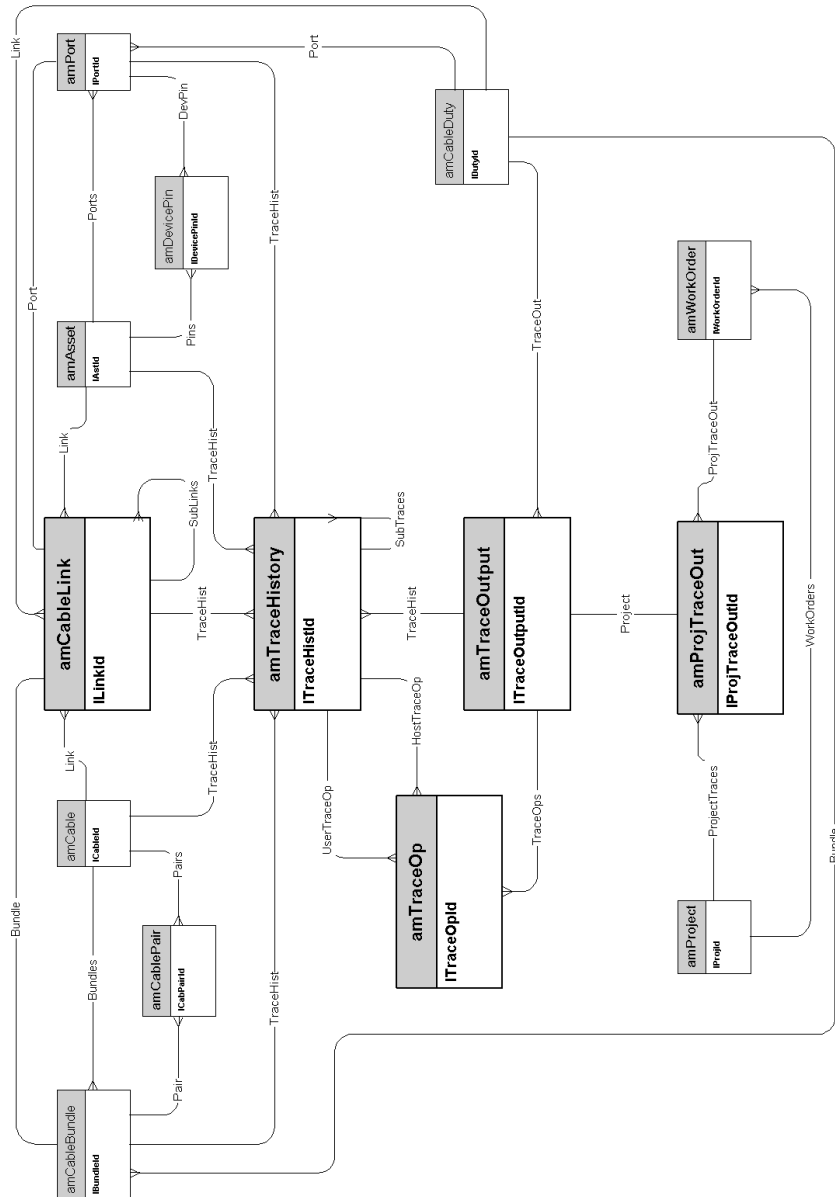


# Termination-field configurations





# Cable links





# 6 Administration

---

## CHAPTER

This chapter presents the diagram of the following physical data model:

- Access to the database [page 44]

# Access to the database

