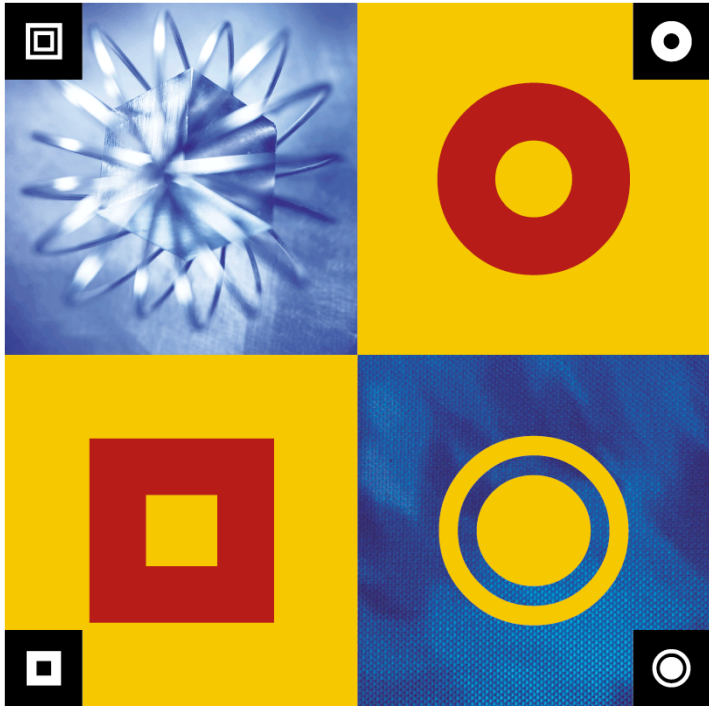




O R A C L E[®] A D D - I N



I N S T A L L A T I O N G U I D E

WinnerRunner

WinRunner Oracle® Add-in

Installation Guide
Version 7.6

WinRunner Oracle Add-in Installation Guide, Version 7.6

This manual, and the accompanying software and other documentation, is protected by U.S. and international copyright laws, and may be used only in accordance with the accompanying license agreement. Features of the software, and of other products and services of Mercury Interactive Corporation, may be covered by one or more of the following patents: U.S. Patent Nos. 5,701,139; 5,657,438; 5,511,185; 5,870,559; 5,958,008; 5,974,572; 6,138,157; 6,144,962; 6,205,122; 6,237,006; 6,341,310; 6,360,332, 6,449,739; 6,470,383; 6,477,483; 6,549,944; 6,560,564; and 6,564,342. Other patents pending. All rights reserved.

ActiveTest, ActiveTune, Astra, FastTrack, Global SiteReliance, LoadRunner, Mercury, Mercury Interactive, the Mercury Interactive logo, Open Test Architecture, Optane, POPs on Demand, ProTune, QuickTest, RapidTest, SiteReliance, SiteRunner, SiteScope, SiteSeer, TestCenter, TestDirector, TestSuite, Topaz, Topaz AIMS, Topaz Business Process Monitor, Topaz Client Monitor, Topaz Console, Topaz Delta, Topaz Diagnostics, Topaz Global Monitor, Topaz Managed Services, Topaz Open DataSource, Topaz Real User Monitor, Topaz WeatherMap, TurboLoad, Twinlook, Visual Testing, Visual Web Display, WebTest, WebTrace, WinRunner and XRunner are trademarks or registered trademarks of Mercury Interactive Corporation or its wholly owned subsidiary Mercury Interactive (Israel) Ltd. in the United States and/or other countries.

All other company, brand and product names are registered trademarks or trademarks of their respective holders. Mercury Interactive Corporation disclaims any responsibility for specifying which marks are owned by which companies or which organizations.

Mercury Interactive Corporation
1325 Borregas Avenue
Sunnyvale, CA 94089 USA
Tel: (408) 822-5200
Toll Free: (800) TEST-911, (866) TOPAZ-4U
Fax: (408) 822-5300

© 2003 Mercury Interactive Corporation, All rights reserved

If you have any comments or suggestions regarding this document, please send them via e-mail to documentation@merc-int.com.

Table of Contents

Before You Install	1
System Requirements	1
Preparing Your System for the Oracle Add-in	2
Choosing the Appropriate Oracle Add-in	3
Understanding Add-in Conflicts and Dependencies	3
Installing the Oracle Add-in	4
Running the Setup Program	4
Restoring Your Java Classes	11
Licensing the WinRunner Oracle Add-in	14
Activating WinRunner with Oracle Support	17
Disabling or Uninstalling the Oracle Add-in	19
Disabling the Oracle Add-in Temporarily	19
Uninstalling the Oracle Add-in	21

Before You Install

Before you install the Oracle Add-in, please review the following installation information.

This chapter describes:

- ▶ System Requirements
- ▶ Preparing Your System for the Oracle Add-in
- ▶ Choosing the Appropriate Oracle Add-in
- ▶ Understanding Add-in Conflicts and Dependencies

System Requirements

To successfully run the WinRunner Oracle Add-in, your system configuration should meet the requirements as specified for WinRunner 7.6 (in the WinRunner 7.6 Readme file), plus the following add-in specific requirements:

Disk Space	7 - 17 MB of free disk space (in addition to the WinRunner installation, and depending on your component selection). (Note that each additional installation of JInitiator 1.1.x requires approximately an additional 10 MB.)
Prerequisites	WinRunner 7.6 standalone installation.
Supported Browsers	Any browsers using a Java Virtual Machine supported by WinRunner (WebTest Add-in) are also supported by the Oracle Add-in.

Notes: You cannot install the Oracle Add-in over a network installation of WinRunner.

If you want to install the Oracle Add-in from the network, map the installation drive before installing and run the installation from the mapped drive.

Preparing Your System for the Oracle Add-in

Before you install the Oracle Add-in, you must have a WinRunner 7.6 standalone installation on your computer.

Oracle Testing Prerequisites

If you intend to test Jinitiator 1.1.x, it must be installed before you install the Oracle Add-in.

If you reinstall Jinitiator 1.1.x, you must reinstall the Oracle Add-in. Before you reinstall, however, make sure you close any browsers, Java applications, and WinRunner.

Choosing the Appropriate Oracle Add-in

The WinRunner Oracle Add-in package is comprised of three different add-ins (on two CD-ROMS), each providing support for different Oracle applications. You must select the add-in that is most appropriate for testing your Oracle application. Following is a description of the different add-ins, and the applications supported by each.

- ▶ **WinRunner Oracle Add-in 7.6**—Enables you to record and run tests on cross-platform Oracle Applications. You can record and run operations on Java-based and Web-based Oracle Applications 11i, as well as applications designed with Oracle Forms, running JInitiator or Java Plug-in. The installation of the WinRunner Oracle Add-in is described in this guide. For more information about using this add-in, refer to the *WinRunner Oracle Add-in User's Guide*.
- ▶ **WinRunner Oracle Developer 2000 Add-in 7.0**—Enables you to test Developer 2000 applications with Forms 4.5 (32-bit), 5.0, and 6.0. When you install the WinRunner Oracle Developer 2000 Add-in, you must also install the WinRunner Agent pll in your Developer 2000 application. For more information, refer to the *WinRunner Oracle Developer Add-in Installation Guide*.
- ▶ **WinRunner Oracle Applications Add-in 7.0**—Enables you to test 16-bit or 32-bit Oracle applications. You should use this add-in if you are testing a 16-bit Oracle application with Forms 4.5, if you are using an Oracle client/server packaged application, or if you cannot or do not want to install the WinRunner Agent pll code in your Oracle Application. For more information, refer to the *WinRunner Oracle Developer Add-in Installation Guide*.

Understanding Add-in Conflicts and Dependencies

You can install all the WinRunner add-ins on a single WinRunner computer. Each time you start WinRunner, you can choose which add-in(s) to load. Loading an add-in may affect the support of other add-ins. Refer to the Compatibility Issues help (located in `<WinRunner Installation path>\dat\conflict.hlp`) for information on the conflicts that can occur when you load multiple add-ins.

Installing the Oracle Add-in

This chapter explains how to install and set up the WinRunner Oracle Add-in. Installing and setting up the WinRunner Oracle Add-in includes the following steps:

- ▶ Running the Setup Program
- ▶ Restoring Your Java Classes
- ▶ Licensing the WinRunner Oracle Add-in
- ▶ Activating WinRunner with Oracle Support

Running the Setup Program

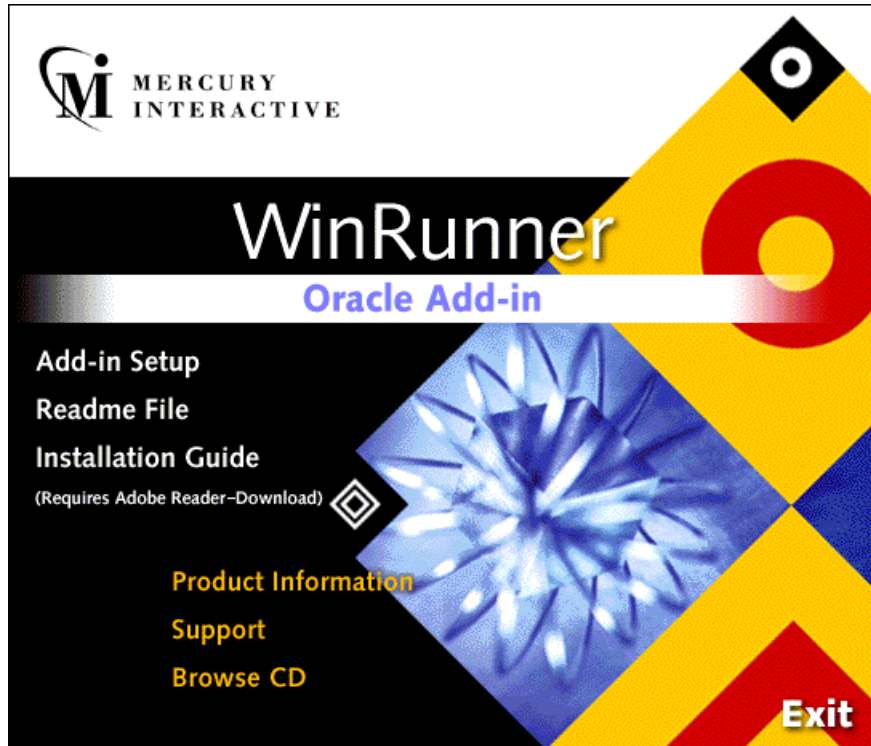
The setup program installs the Oracle Add-in support in your WinRunner installation folder and in your **Common Files\Mercury Interactive\SharedFiles\JavaAddin** folder. If this folder did not exist previously, it is created.

Notes: You must be logged on with Administrator privileges (if applicable on your operating system) in order to install the Oracle Add-in.

Before you install the Oracle Add-in, be sure to read “Preparing Your System for the Oracle Add-in” on page 2.

To run the Oracle Add-in setup program:

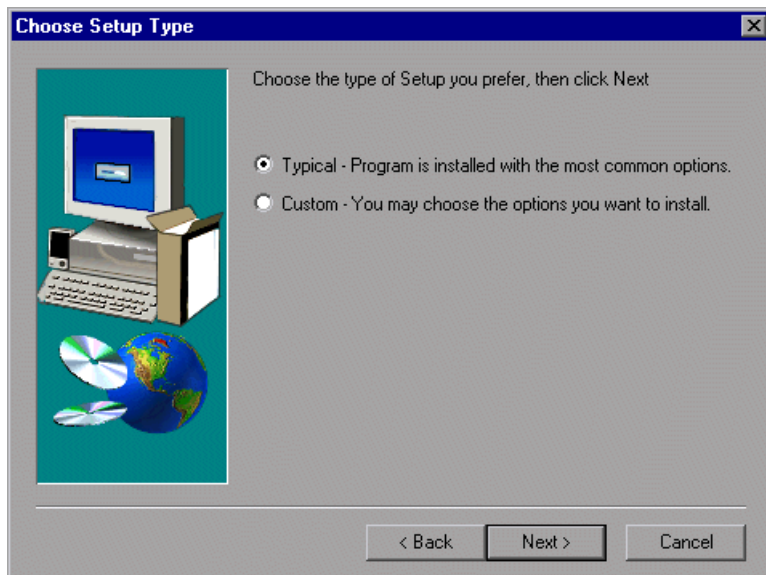
- 1** Close any instances of WinRunner, all Web browsers, and any other programs that run Java applets or applications.
- 2** Insert the CD-ROM into the CD-ROM drive. If the CD-ROM drive is on your local machine, the Setup window opens. If you are installing from a network drive, connect (map) and browse to it. Double-click **autorun.exe** in the root folder of the CD-ROM. The WinRunner Oracle Add-in Setup window opens.



The Oracle Add-in Setup window contains the following options:

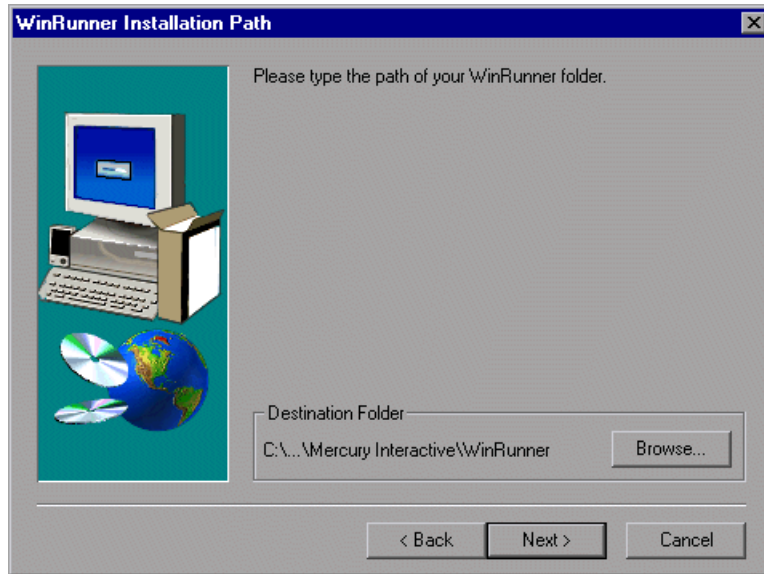
- **Add-in Setup:** Starts the Oracle Add-in installation program.
- **Readme File:** Opens the Oracle Add-in Readme file.
- **Installation Guide:** Opens the *Oracle Add-in Installation Guide* in Adobe Reader format. You can click the link below this option to download Adobe Reader from www.adobe.com.

- **Product Information:** Opens the product information site (<http://www.mercuryinteractive.com/products/winrunner>).
 - **Support:** Opens Mercury Interactive's Customer Support Web site (<http://support.mercuryinteractive.com>).
 - **Browse CD:** Displays the contents of the Oracle Add-in CD-ROM.
 - **Exit:** Exits the Setup window.
- 3** To start the Oracle Add-in setup program, click **Add-in Setup**. The WinRunner Oracle Add-in setup program starts.
- 4** Read the Welcome screen and click **Next**. The Choose Setup Type screen opens.



- 5** Choose the setup type that you prefer and click **Next**.
- If you chose **Typical**, proceed to step 7. If you chose **Custom**, proceed to the next step.

- Specify the folder in which WinRunner is installed. If the displayed folder is not the WinRunner installation folder, click **Browse** to find the correct folder.

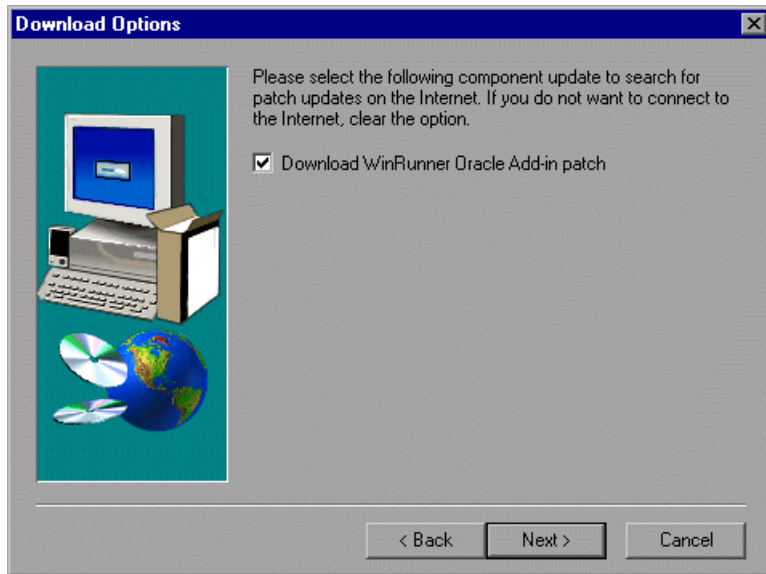


Click **Next**.

- In the Download Options screen, select **Download Oracle Add-in patch** if you would like to search the Mercury Interactive Updates Server for updates for the Oracle Add-in. If a Oracle Add-in update is found, the current setup program continues and incorporates the updates as it proceeds. If you do not want to connect to the Internet, clear this option and the installation will proceed using the environment support included in this version.

Notes: It is recommended, where possible, to allow setup to download updates so that the latest possible version is used for the installation.

After you click **Next** in this screen, you cannot click **Back** to modify your selections. If you need to modify your selections, quit the setup and start the setup program again.



Click **Next**. If you are performing a typical installation, proceed to step 10. Otherwise, proceed to the next step.

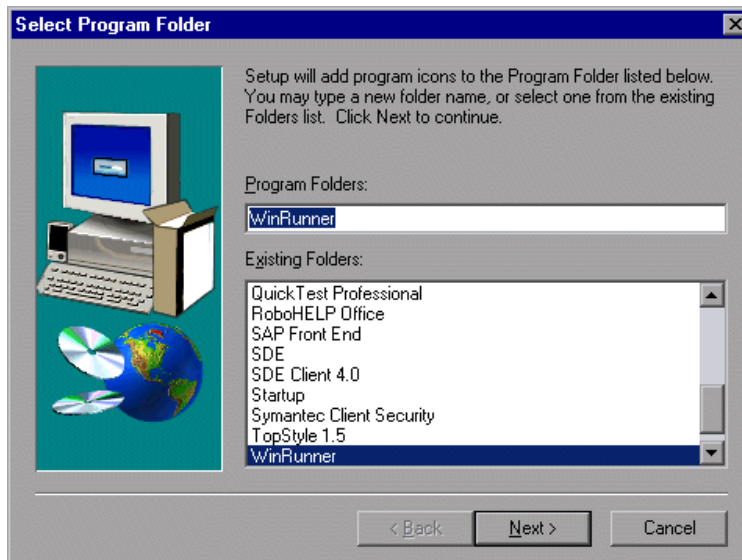
- 8 Select the Oracle environment(s) that you intend to use.



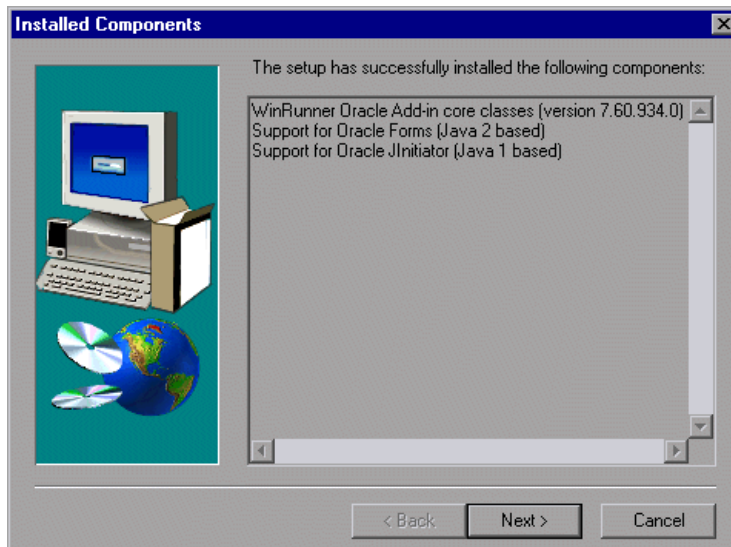
Click **Next**.

- 9 The installation process begins. To pause or quit the installation process, click **Cancel**.

- 10 Select a program folder. The default is WinRunner. Click **Next**.

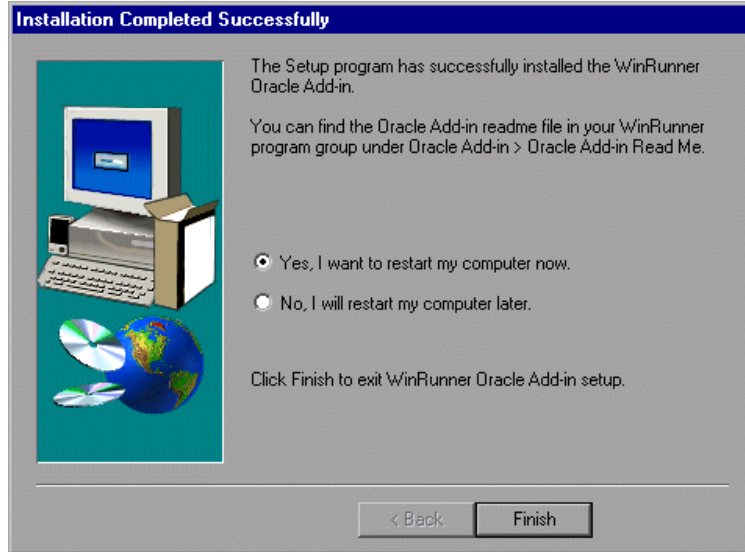


- 11 The Installed Components screen opens and reports the components that were successfully installed during the installation.



Click **Next**.

12 To complete the installation process, click **Finish**.



Note: You should reboot your computer before using the Oracle Add-in.

Restoring Your Java Classes

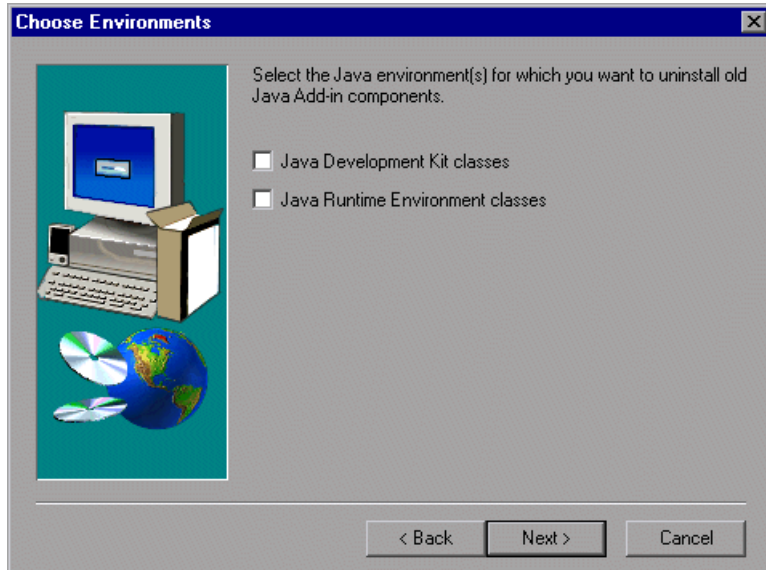
If you are upgrading from WinRunner Oracle Add-in version 7.5 or earlier, or you have QuickTest Professional version 5.6 or earlier installed, you may still have remnants of an old version on your computer. If this is the case, you will receive a warning similar to this one when you try to run a supported Java application with Mercury Interactive Java support enabled.



If you receive this warning, you should run the Java Add-in Old Components Uninstall Tool.

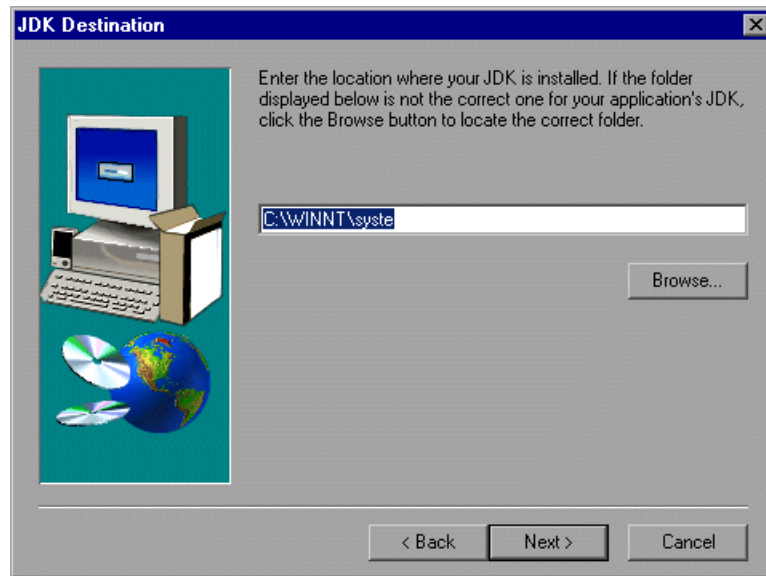
To run the Java Add-in Old Components Uninstall Tool:

- 1** Choose **Programs > WinRunner > Oracle Add-in > Java Add-in Old Components Uninstall Tool** from the **Start** menu. The Choose Environments screen opens.
- 2** Select the environments on which you installed the previous version of the Oracle Add-in: **Java Development Kit classes** and/or **Java Runtime Environment classes**.



Click **Next**.

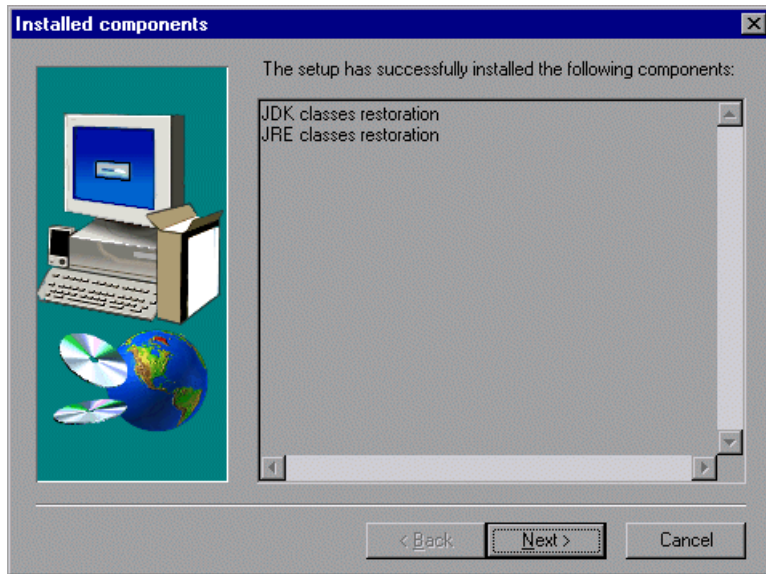
- 3 The JDK (or JRE) Destination screen opens. Type in the path or use the **Browse** button to choose the destination of the JDK/JRE that you want to restore.



Click **Next**.

- 4 If you chose to restore both JDK and JRE classes, the JRE Destination screen opens after the JDK Destination screen. Type in the path or use the **Browse** button to choose the destination of the JRE that you want to restore. The restoration process begins.

- 5 When the process is complete, the Installed components screen opens and displays the JDK/JRE environments that you chose to restore.



Click **Next**.

- 6 The Setup Complete screen opens. Click **Finish** to complete the update.

Licensing the WinRunner Oracle Add-in

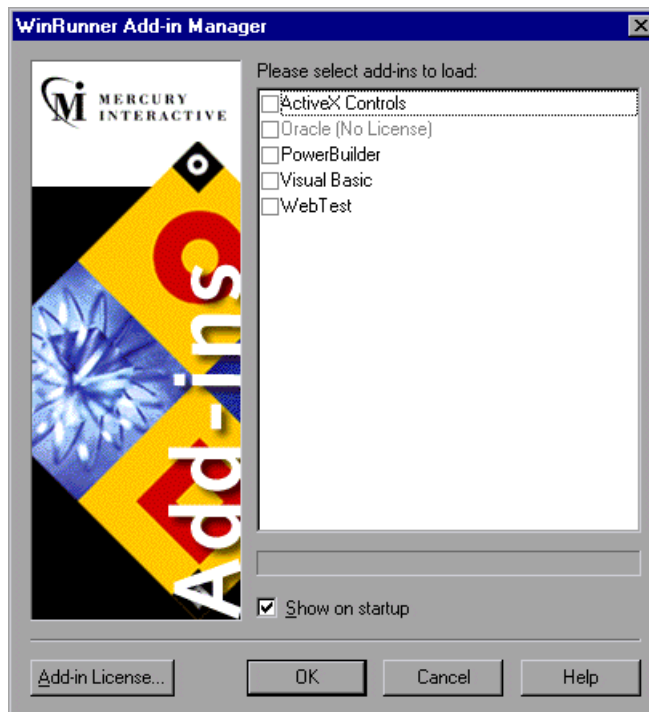
WinRunner external add-ins (purchased separately) require a separate seat or concurrent license code. For seat licenses, you enter the license details by clicking the **Add-in License** button in the Add-in Manager dialog box. For concurrent licenses, you install the add-in license on the Mercury Functional Testing Concurrent License Server computer.

Note: The WinRunner Add-in license is valid for all WinRunner external add-ins. This means that after you have installed the add-in license for one external add-in, you do not need to install it again if you install additional external add-ins on the same computer.

To access the add-in license installation wizard:

- 1 Select **Start > Programs > WinRunner > WinRunner**. The WinRunner Add-in Manager dialog box opens.

(If the Add-in Manager dialog box does not open, see the note on displaying the Add-in Manager, on page 18).



Note: If the add-in license has not yet been installed, the add-in is displayed as **(No License)** in the Add-in Manager dialog box. If the words **(No License)** are not displayed, then the add-in license has already been installed, and you do not need to install it again.

- 2** Click **Add-in License**. The WinRunner License Installation - Welcome window opens.

Note: The **Add-in License** button is displayed only when a WinRunner seat license is installed.

The procedure for installing an add-in license is the same as the procedure for installing a WinRunner license. Refer to the *WinRunner Installation Guide* for further information.

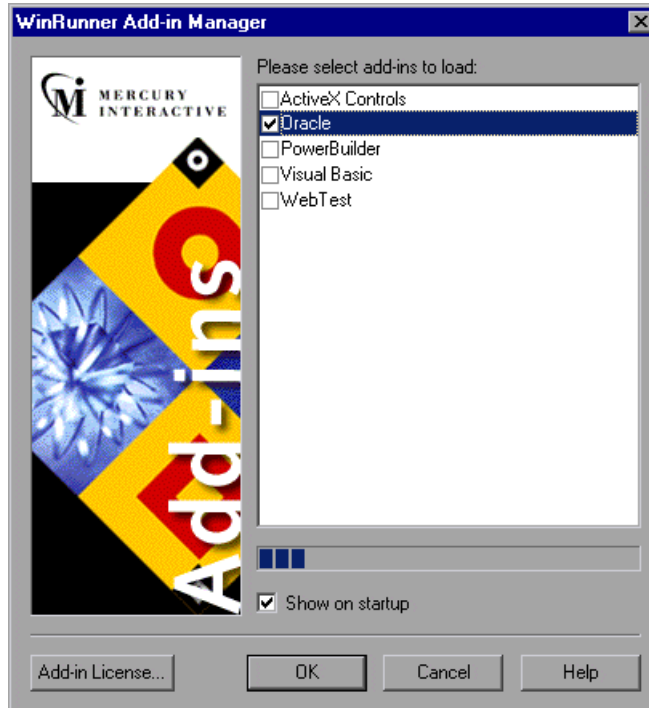
Activating WinRunner with Oracle Support

To activate the Oracle Add-in:



- 1 Select **Start > Programs > WinRunner > WinRunner**. The WinRunner Add-in Manager dialog box opens.

(If the Add-in Manager dialog box does not open, see the note on displaying the Add-in Manager, on page 18).



- 2 Select **Oracle**.
- 3 Click **OK**. WinRunner opens with the Oracle Add-in loaded.

Note:

If the Add-In Manager dialog box does not open:

- 1** Start WinRunner.
 - 2** In **Tools > General Options > General** category > **Startup** sub-category, check **Display Add-in Manager on startup**. In the **Hide Add-in Manager after ___ seconds** box, enter the number of seconds for which the Add-in Manager is displayed. (The default value is **10** seconds.)
 - 3** Click **OK**.
 - 4** Close WinRunner. A WinRunner message box opens asking whether you want to keep the changes you made. Click **Yes**.
-

For more information on the Add-in Manager, refer to the *WinRunner User's Guide*.

Disabling or Uninstalling the Oracle Add-in

If you decide to use WinRunner without the Oracle Add-in, you have the option of temporarily disabling the add-in, or uninstalling it.

Disabling the Oracle Add-in Temporarily

To disable the Oracle Add-in, you must disable Oracle Add-in support both in your application and in WinRunner.

Disabling the Mercury Java Support in Your Application

You can temporarily disable the Oracle Add-in in your application using the Mercury Java Support Activation Tool.



After you install the WinRunner Oracle Add-in (or other Mercury Java tools), the Mercury Java Support Activation Tool icon appears in the task bar tray. This icon indicates that Mercury Java support is enabled, and all supported Java applications or applets will open with Mercury support active.



You can disable Mercury Java support temporarily by clicking this icon. When Mercury Java support is disabled, Java applications and applets open without Mercury Java support.

This is the preferred method of temporarily disabling Mercury Java support.

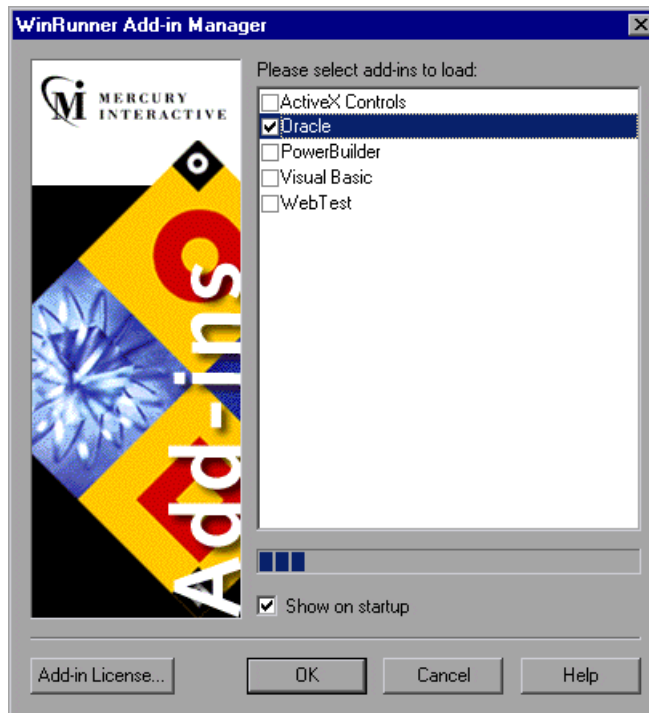
Disabling Oracle Add-in Support in WinRunner

In addition to disabling Oracle support in your application, you may need to also disable Oracle Add-in support in WinRunner.

To temporarily disable the Oracle Add-in in WinRunner:

- 1 Select **Start > Programs > WinRunner > WinRunner** to open WinRunner.
- 2 After the opening screen appears, the **WinRunner Add-In Manager** dialog box opens for ten seconds.

(If the Add-in Manager dialog box does not open, see the note on displaying the Add-in Manager, on page 18).



- 3 To disable Oracle support, clear the **Oracle** check box.
- 4 Click **OK**. WinRunner opens with the add-in support disabled.

Uninstalling the Oracle Add-in

You uninstall the Oracle Add-in from the Windows Add/Remove Programs dialog box and then modify the classpath variable.

To uninstall the Oracle Add-in:

- 1** Select **Start > Programs > WinRunner > Oracle Add-in > Uninstall Oracle Add-in**. Alternatively, select **WinRunner Oracle Add-in** from the Windows Add/Remove Programs dialog box (**Start > Control Panel > Add/Remove Programs**).
- 2** A message asks you to confirm that you want to remove the Oracle Add-in and all of its components. Click **Yes**.
- 3** When the uninstall process is complete, click **OK**.
- 4** Remove the path <Mercury Shared Files Folder>\JavaAddin\classes from the classpath.
 - If you are working in Windows 2000 or Windows XP, select **Start > Settings > Control Panel > System**. In the **System Properties** dialog box, click the **Advanced** tab and then click the **Environment Variables** button. In both the **System Variables** list and the **User Variables** list, delete <Mercury Shared Files Folder>\JavaAddin\classes from the classpath, if it exists. For example, E:\Program Files\Common Files\Mercury Interactive\SharedFiles\JavaAddin\classes. Click **Close**.
 - If you are working in Windows NT 4.0, select **Start > Settings > Control Panel > System**. In the **System Properties** dialog box, click the **Environment** tab. In both the **System Variables** list and the **User Variables** list, delete <Mercury Shared Files Folder>\JavaAddin\classes from the classpath, if it exists. For example, E:\Program Files\Common Files\Mercury Interactive\SharedFiles\JavaAddin\classes. Click **Close**.
 - If you are working in Windows 98, open the file [**Windows Drive**]:\autoexec.bat in any editing program. Delete <Mercury Shared Files Folder>\JavaAddin\classes from the classpath. For example, E:\Program Files\Common Files\Mercury Interactive\SharedFiles\JavaAddin\classes. Save and close the file, and reboot your computer.

The Oracle Add-in is now completely uninstalled.



Mercury Interactive Corporation

1325 Borregas Avenue
Sunnyvale, CA 94089 USA

Main Telephone: (408) 822-5200

Sales & Information: (800) TEST-911, (866) TOPAZ-4U

Customer Support: (877) TEST-HLP

Fax: (408) 822-5300

Home Page: www.mercuryinteractive.com

Customer Support: support.mercuryinteractive.com



* WRORA I G7. 6 / 01 *