

# HP OpenView Select Identity

## Connector for Microsoft® Windows® NT Local Systems

Connector Version: 3.5

---

### Installation and Configuration Guide

Document Release Date: July 2006  
Software Release Date: July 2006



## Legal Notices

### Warranty

The only warranties for HP products and services are set forth in the express warranty statements accompanying such products and services. Nothing herein should be construed as constituting an additional warranty. HP shall not be liable for technical or editorial errors or omissions contained herein.

The information contained herein is subject to change without notice.

### Restricted Rights Legend

Confidential computer software. Valid license from HP required for possession, use or copying. Consistent with FAR 12.211 and 12.212, Commercial Computer Software, Computer Software Documentation, and Technical Data for Commercial Items are licensed to the U.S. Government under vendor's standard commercial license.

### Copyright Notices

© Copyright 2006 Hewlett-Packard Development Company, L.P.

This product includes software developed by the Apache Software Foundation (<http://www.apache.org/>). Portions Copyright (c) 1999-2003 The Apache Software Foundation. All rights reserved.

Select Identity uses software from the Apache Jakarta Project including:

- Commons-beanutils
- Commons-collections
- Commons-logging
- Commons-digester
- Commons-httpclient
- Element Construction Set (ecs)
- Jakarta-poi
- Jakarta-regexp
- Logging Services (log4j)

Additional third party software used by Select Identity includes:

- JasperReports developed by SourceForge
- iText (for JasperReports) developed by SourceForge
- BeanShell
- Xalan from the Apache XML Project
- Xerces from the Apache XML Project
- Java API for XML Processing from the Apache XML Project
- SOAP developed by the Apache Software Foundation
- JavaMail from SUN Reference Implementation
- Java Secure Socket Extension (JSSE) from SUN Reference Implementation
- Java Cryptography Extension (JCE) from SUN Reference Implementation
- JavaBeans Activation Framework (JAF) from SUN Reference Implementation

- OpenSPML Toolkit from OpenSPML.org
- JGraph developed by JGraph
- Hibernate from Hibernate.org
- BouncyCastle engine for keystore management, bouncycastle.org

This product includes software developed by Teodor Danciu (<http://jasperreports.sourceforge.net>). Portions Copyright (C) 2001-2004 Teodor Danciu (teodord@users.sourceforge.net). All rights reserved.

Portions Copyright 1994-2004 Sun Microsystems, Inc. All Rights Reserved.

This product includes software developed by the Waveset Technologies, Inc. ([www.waveset.com](http://www.waveset.com)). Portions Copyright © 2003 Waveset Technologies, Inc. 6034 West Courtyard Drive, Suite 210, Austin, Texas 78730. All rights reserved.

Portions Copyright (c) 2001-2004, Gaudenz Alder. All rights reserved.

#### Trademark Notices

AMD and the AMD logo are trademarks of Advanced Micro Devices, Inc.

Intel and Pentium are trademarks or registered trademarks of Intel Corporation in the United States, other countries, or both.

JAVA™ is a US trademark of Sun Microsystems, Inc.

Microsoft® and Windows® are U.S. registered trademarks of Microsoft Corporation.

Oracle® is a registered US trademark of Oracle Corporation, Redwood City, California

UNIX® is a registered trademark of The Open Group.

## Support

Please visit the HP OpenView support web site at:

**<http://www.hp.com/managementsoftware/support>**

This web site provides contact information and details about the products, services, and support that HP OpenView offers.

HP OpenView online software support provides customer self-solve capabilities. It provides a fast and efficient way to access interactive technical support tools needed to manage your business. As a valuable support customer, you can benefit by using the support site to:

- Search for knowledge documents of interest
- Submit enhancement requests online
- Download software patches
- Submit and track progress on support cases
- Manage a support contract
- Look up HP support contacts
- Review information about available services
- Enter discussions with other software customers
- Research and register for software training

Most of the support areas require that you register as an HP Passport user and log in. Many also require a support contract.

To find more information about access levels, go to:

**[http://www.hp.com/managementsoftware/access\\_level](http://www.hp.com/managementsoftware/access_level)**

To register for an HP Passport ID, go to:

**<http://www.managementsoftware.hp.com/passport-registration.html>**

---

# Contents

<b>1</b>	<b>Documentation Map</b> .....	<b>7</b>
<b>2</b>	<b>Introduction</b> .....	<b>9</b>
	About HP OpenView Select Identity .....	9
	About Connectors .....	9
	About Windows NT Local Connector .....	9
	High-Level Architecture .....	10
	Overview of Installation Tasks .....	12
<b>3</b>	<b>Installing the Connector</b> .....	<b>13</b>
	Windows NT Local Connector Files .....	13
	System Requirements .....	13
	Extracting Contents of the Schema File .....	15
	Installing the Connector RAR .....	15
<b>4</b>	<b>Configuring the Connector with Select Identity</b> .....	<b>17</b>
	Configuration Procedure .....	17
	Add a New Connector .....	17
	Add a New Resource .....	17
	Map Attributes .....	19
<b>5</b>	<b>Installing the Agent</b> .....	<b>21</b>
	About the Agent .....	21
	Installing the Agent on Windows Server .....	21
<b>6</b>	<b>Uninstalling the Connector</b> .....	<b>25</b>
	Uninstalling the Agent .....	25

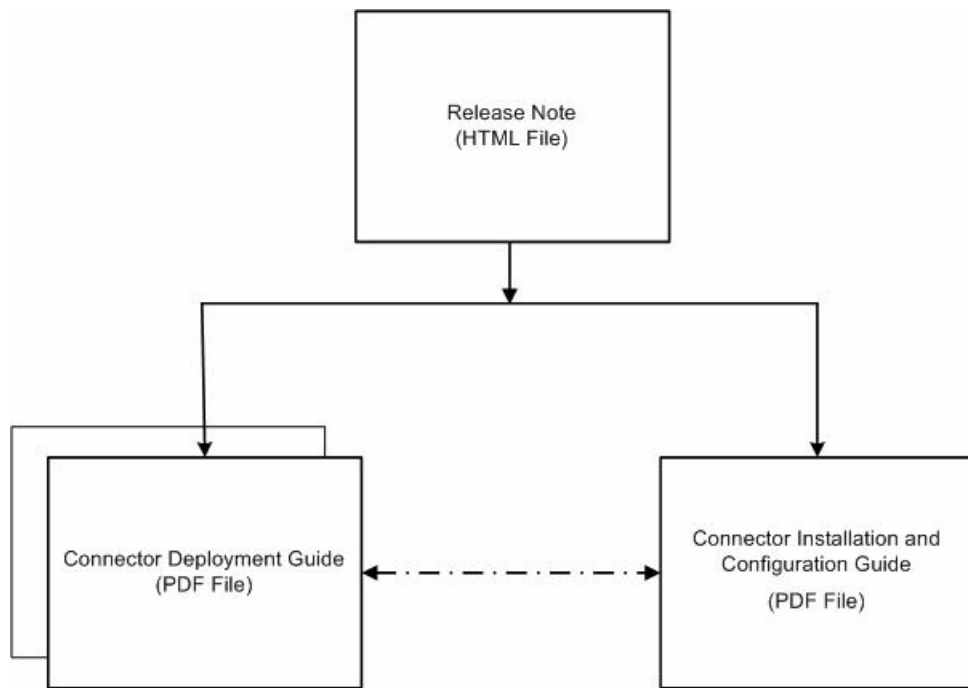


# 1 Documentation Map

This chapter describes the organization of HP OpenView Select Identity connector documentation and provides necessary information on how to use the documentation set to install and configure the connectors.

Figure 1 illustrates the documentation map for HP OpenView Select Identity connector. For a list of available product documentation, refer to the table 1.

**Figure 1 Documentation Map**



**Table 1 Connector Documentation**

<b>Document Title and Filename</b>	<b>Contents</b>	<b>Location</b>
<i>Release Note</i> Windows NT Local Connector v3.5 Release Note.htm	This file contains necessary information on new features of the connector, enhancements, known problems or limitations, and support information.	/Docs/ subdirectory under the connector directory.
<i>Connector Deployment Guide            (for Select Identity 4.0/4.01.00)</i> connector_deploy_SI4.pdf	Connector deployment guides provide detailed information on: <ul style="list-style-type: none"> <li>• Deploying a connector on an application server.</li> <li>• Configuring a connector with Select Identity.</li> </ul> Refer to these guides when you need generic information on connector installation.	/Docs/ subdirectory under the connector directory.
<i>Connector Deployment Guide            (for Select Identity 3.3.1)</i> connector_deploy_SI3.3.1.pdf		
<i>Connector Installation and            Configuration Guide</i> Windows NT Local_install.pdf	Connector installation and configuration guide provides installation instructions for a specific connector. It contains resource specific configuration details.	/Docs/ subdirectory under the connector directory.



---

## 2 Introduction

This chapter gives an overview of the HP OpenView Select Identity connector for Windows. An HP OpenView Select Identity connector enables you to provision users and manage identities on Windows NT Local systems. At the end of this chapter, you will be able to know about:

- The benefits of HP OpenView Select Identity.
- The role of a connector.
- The connector for Windows.

### About HP OpenView Select Identity

HP OpenView Select Identity provides a new approach to identity management. It helps you manage the entire identity lifecycle of an enterprise application. Select Identity helps you automate the process of provisioning and managing user accounts and access privileges across platforms, applications, and corporate boundaries. Select Identity communicates with the enterprise information system through connectors, and automates the tasks of identity management. The enterprise information system, which is also referred to as **resource**, can be a database, a directory service, or an ERP package, among many others.

### About Connectors

You can establish a connection between a resource and Select Identity by using a connector. A connector is resource specific. It is installed on the system where Select Identity is installed. The combination of Select Identity and connector helps you perform a set of tasks on the resource to manage identity. A connector can be **unidirectional** or **bidirectional**. A unidirectional connector helps you manage identities from Select Identity, but if any change takes place in resource, it cannot communicate that back to Select Identity. On the other hand, a bidirectional connector can reflect the changes made on resource back to Select Identity. This property of bidirectional connectors is known as **reverse synchronization**.

### About Windows NT Local Connector

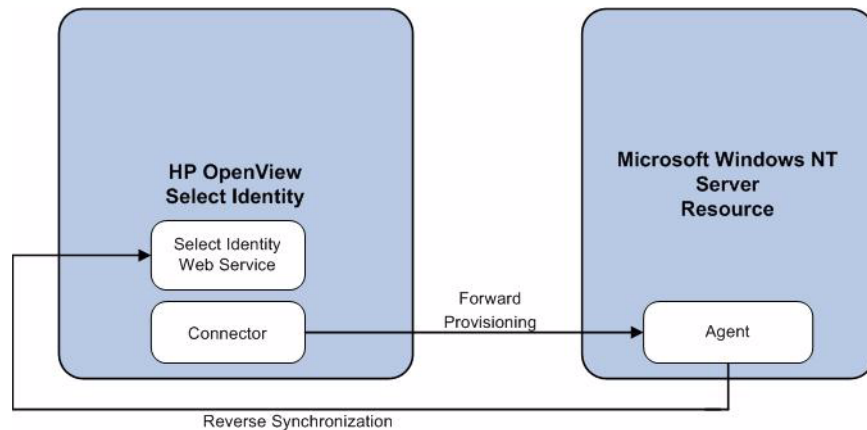
The connector for Microsoft Windows NT Local systems — hereafter referred to as Windows NT Local connector — enables HP OpenView Select Identity to provision in the local domain on Windows NT, XP, and 2000 systems. This connector is a two-way connector and can send data back to Select Identity based on changes made in the local domain. The Windows NT Local connector enables Select Identity to perform the following operations on Windows:

- Add, update, and remove users
- Retrieve user attributes
- Enable and disable users
- Verify a user's existence
- Change user passwords
- Reset user passwords
- Expire user passwords
- Retrieve all entitlements
- Retrieve a list of supported user attributes
- Grant and revoke entitlements to and from users

## High-Level Architecture

Figure 2 illustrates a high-level architecture of Windows NT Local connector. You must install the connector on Select Identity server and the agent on resource system. The agent helps synchronizing the changes made on Windows NT Local server with Select Identity.

**Figure 2 High-Level Architecture of the Windows NT Local Connector**



To perform forward provisioning operation on Windows NT Local systems, the connector communicates with the agent. The agent executes the provisioning task on resource system.

The agent detects the changes on the host (Windows) resource and sends SPML notifications to Select Identity to synchronize the changes. The updates made to Select Identity data depend on whether the Windows system is an authoritative or non-authoritative resource. The table below compares the reconciliation mechanism of an authoritative resource and a non-authoritative resource.



This connector can be used with Select Identity 4.01.000, 4.0, and 3.3.1.

<b>Operation</b>	<b>Authoritative Resource</b>	<b>Non-Authoritative Resource</b>
User addition on the resource.	The user is added to the respective Service.	User is not added. However, if the user exists, the entitlements are modified (not the user attributes).
User attributes modification on the resource.	Attributes are updated in Select Identity.	Attributes are not updated in Select Identity.
User entitlements modification on the resource.	Entitlements are modified in Select Identity.	Entitlements are modified in Select Identity.
User deletion on the resource.	The user's Service membership is deleted in Select Identity.	The user is not deleted in Select Identity, though the entitlements for the resource are deleted.
Password change on the resource.	The user's password is reset in all Services for which the user is registered.	The user's password is reset in all Services for which the user is registered.

## Overview of Installation Tasks

Before you start installing the connector, you must ensure that system requirements and all the installation prerequisites are met. Refer to the [Table 2](#) for an overview of installation tasks.

**Table 2 Organization of Tasks**

Task Number	Task Name	Reference
1	Install the connector on the Select Identity server.	See <a href="#">Installing the Connector</a> on page 13.
	— Meet the system requirements.	See <a href="#">System Requirements</a> on page 13.
	— Extract the contents of the Schema file (file that contains the mapping files for the connector) to location on the Select Identity server.	See <a href="#">Extracting Contents of the Schema File</a> on page 15.
	— Install the Resource Adapter Archive (RAR) of the connector on an application server.	See <a href="#">Installing the Connector RAR</a> on page 15.
2	Configure the connector with the Select Identity server.	See <a href="#">Configuring the Connector with Select Identity</a> on page 17.
3	Installing the agent for Windows NT Local connector.	See <a href="#">Installing the Agent</a> on page 21.

## 3 Installing the Connector

This chapter elaborates the procedure to install Windows NT Local on Select Identity server and agent on Windows NT Local systems. At the end of this chapter, you will know about

- Software requirements to install the Windows NT Local connector.
- Prerequisite conditions to install Windows NT Local connector.
- Procedure to install Windows NT Local connector.

### Windows NT Local Connector Files

The Windows NT Local connector is packaged in the following files in the `NLocal` directory on the Select Identity Connector CD:

**Table 3 Windows NT Local Connector Files**

Serial Number	File Name	Description
1	<code>NLocalConnector.rar</code>	The Resource Adapter Archive (RAR) file contains the connector binaries.
2	<code>NLocalSchema.jar</code>	The Schema file contains the mapping files that contain attribute information of Windows.
3	<code>NLocalSetup.zip</code>	The zip file contains the executable to install the agent.

### System Requirements

The Windows NT Local connector is supported in the following environment:

**Table 4 Platform Matrix for Windows NT Local connector**

Select Identity Version	Application Server	Database
3.0.2	WebLogic 8.1.2 on Windows 2003	SQL Server 2000
	WebLogic 8.1.2 on Solaris 9	Oracle 9i
	WebLogic 8.1.2 on HP-UX 11i	Oracle 9i
	WebSphere 5.1.1 on Solaris 9	DB2 8.2 (or DB2 8.1 Service Pack 7)
3.3	WebLogic 8.1.4 on Windows 2003	SQL Server 2000
	WebLogic 8.1.4 on Solaris 9	Oracle 9i
	WebLogic 8.1.4 on Red Hat Enterprise Linux 3.0	SQL Server 2000
3.3.1	WebLogic 8.1.4 on Windows 2003	SQL Server 2000
	WebSphere 5.1.1 on HP-UX 11i	Oracle 9i
4.0/4.01.000	The Windows NT Local connector is supported on all the platform configurations of Select Identity 4.0 and 4.01.000.	

The Windows NT Local connector is supported with Windows NT 4.0, Windows 2000, Windows 2003, and Windows XP.

The agent is supported on the following platform:

**Table 4A Platform Matrix for the Agent**

Operating system	Browser Version	Winsock Version
<ul style="list-style-type: none"> <li>• Microsoft Windows NT Server/ Workstation, Service Pack 6 or later</li> <li>• Windows XP Professional, Service Pack 1</li> <li>• Windows 2000 Professional, Service Pack 4</li> <li>• Windows 2000 Server.</li> </ul>	Internet Explorer 5.5 or later (supporting MSXML 2.0 or later)	Version 2.0 or later.

You require the administrative user name and password for the machine during the installation.

## Extracting Contents of the Schema File

The Schema file of the connector contains necessary mapping information to map resource attributes to Select Identity. Extract contents of the `NTLschema.jar` file to a directory that is in the application server `CLASSPATH`. Refer to the *HP OpenView Select Identity Connector Deployment Guide* for detailed instruction to extract contents of the Schema file.

## Installing the Connector RAR

To install the RAR file of the connector (`NTLConnector.rar`) on the Select Identity server, you must copy the file to a local subdirectory on the Select Identity server, and then deploy on the application server. Refer to the *HP OpenView Select Identity Connector Deployment Guide* for detailed information on deploying a RAR file on an application server.



While deploying the RAR on WebSphere, enter the JNDI Pool Name as **eis/NTL**.

After deploying the connector RAR on application server, you must configure Windows NT Local connector with Select Identity. Refer to [Configuring the Connector with Select Identity](#) on page 17 for configuration steps.





# 4 Configuring the Connector with Select Identity

This chapter describes the procedure to configure the Windows NT Local connector with Select Identity. At the end of this chapter, you will know the procedure to configure the Windows NT Local connector with Select Identity.

## Configuration Procedure

After you deploy the connector RAR on application server, you must configure the connector with Select Identity. Perform the following steps to configure the Windows NT Local connector with Select Identity.

- 1 Add a New Connector
- 2 Add a New Resource
- 3 Map Attributes

### Add a New Connector

Add a new connector in Select Identity by using the user interface. While adding the connector, do the following:

- In the Connector Name text box, specify a name for the connector.
- In the Pool Name text box, enter **eis/NTL**.
- Select No for the Mapper Available section.

Refer to the *HP OpenView Select Identity Connector Deployment Guide* for detailed information on adding a new connector in Select Identity.

### Add a New Resource

Add a new resource in Select Identity that uses the newly added connector. Refer to the *HP OpenView Select Identity Connector Deployment Guide* for detailed instructions on adding a resource in Select Identity.

Refer to the following table while entering the parameters in the Basic Information and the Access Information pages:

**Table 5 Resource Configuration Parameters**

Field Name	Sample Values	Description	Comment
Resource Name	local_server	Name given to the resource. If you enabled reverse synchronization, this must be the same as the value provided for the urn:trulog-ica:conzero:2.0#resourceId attribute on the agent console.	
Connector Name	NT	The newly deployed connector.	On Select Identity 3.3.1, this field is known as Resource Type.
Authoritative Source*	No	Whether this resource is a system that is considered to be the authoritative source for user data in your environment. Specify <b>No</b> if the connector is not enabled for reverse synchronization. Specify <b>Yes</b> if you want to add users through reverse synchronization. If the resource is not authoritative, the resource can only modify user entitlements during reverse synchronization.	
Associate to Group	Selected	Whether the system uses the concept of groups. For this connector, select this option.	This is applicable only for Select Identity 3.3.1.
UserName	Administrator	Administrative account on the target resource.	
Password	Password123	Password corresponding to the administrative account.	
Server	server.company.com	Target resource NETBIOS name or IP address.	
ServerPort	5001	Forward connector server port, as configured on the resource agent.	

\*Instead of creating an authoritative resource, you can create authoritative attributes (in the next step) for the attributes that will be synchronized. Entitlements are authoritative by default in a non-authoritative resource but other attributes are not.

## Map Attributes

After successfully adding a resource for the Windows NT Local connector, you must map the resource attributes to Select Identity attributes. Refer to the *HP OpenView Select Identity Connector Deployment Guide* for information on mapping and creating attributes. While mapping attributes, refer to the following table for resource specific mapping information.

**Table 6 Windows NT Local Mapping Information**

Select Identity Attribute	NT Attribute	Label on NT UI	Description
User Name	UserId	User Logon Name	Primary Key for NT Domain and NT Local User; <i>this attribute is mandatory and must be mapped.</i>
Password	Password	Password	User's password; <i>this attribute is mandatory and must be mapped.</i>
First Name + Last Name	FullName	Full Name	Full name; <i>this attribute is mandatory and must be mapped.</i>
Description	Comment	Description	Description.
UserComment	User Comment	User Comment	A user comment.
ProfilePath	Profile Path (not available for NT Workstation)	User Profile Path	A path to the user's profile. This value can be a null string, a local absolute path, or a UNC path.
ScriptPath	ScriptPath	Logon Script Name	The path for the user's logon script file. The script file can be a .CMD file, an .EXE file, or a .BAT file.
HomeDirectory Drive	Home Directory Drive	Home Directory: Connect	The local directory path. Not available for NT Workstation.
GroupId	GroupId	Group Name	Primary Key for the NT Local Group

After mapping the attributes, you can use the connector to create a service, or you can associate the connector with an existing service. Refer to the *Service Studio* chapter of the *HP OpenView Select Identity Administrator Guide* for information on Select Identity services.

If you enable reverse synchronization, configure the service as follows:

- When selecting the Business Relationship, choose the `ReconciliationDefaultProcess` workflow for the `RECONCILIATION:Add Service` and `RECONCILIATION>Delete Service Membership` request events. For `RECONCILIATION:Add Service`, use the user addition view.
- In the user addition view, specify mandatory attributes that are guaranteed to be passed by the reverse synchronization request when adding a user. If you specify a mandatory attribute that is not passed by the resource, the user can be created in Select Identity but reverse synchronization will not succeed.
- When specifying the context, obtain the value from the add request issued by the resource. For example, if the context is `Country` and the value is `US`, the `<addRequest>` element in the reverse synchronization request should have an attribute called `country` and a value of `US`. If the context attribute is not present in the add user request, the user can be created in Select Identity but will not be assigned to a Service.

---

## 5 Installing the Agent

This chapter gives an overview of the agent for Windows NT Local connector and the procedure to install the agent on an Windows NT Local systems. At the end of the chapter, you will be able to know about:

- The role of an agent.
- The procedure to install the agent.

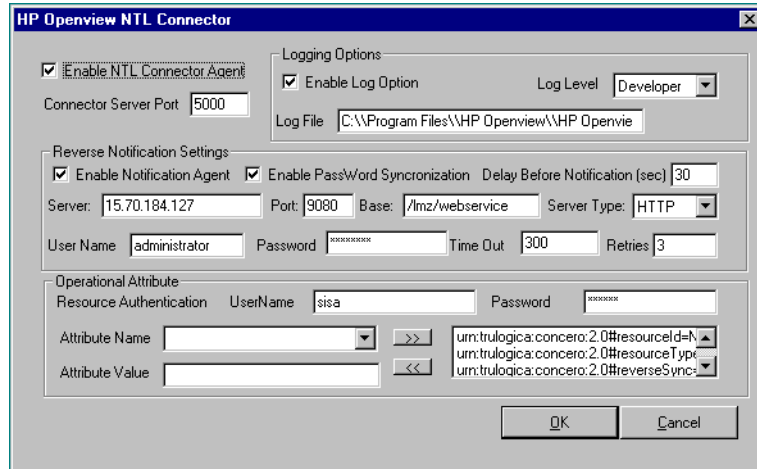
### About the Agent

The Windows NT Local connector communicates to the resource Windows with the help of the agent. For forward (Select Identity to Windows NT Local) operations, the connector communicates with the agent and agent performs the provisioning on the resource. Agent sends back any changes made on Windows NT Local to Select Identity web service in the form of SPML requests. The agent is packaged with the file `NTLSetup.zip`.

### Installing the Agent on Windows Server

After you install the Windows NT Local connector on the Select Identity server, you can install the agent on the Windows server. The agent is a suite of Services and support DLLs deployed on the resource. Perform the following steps to install the agent:

- 1 Copy the `NTLSetup.zip` file from the Select Identity Connector CD to a directory on the NT Local server.
- 2 Extract the ZIP file.
- 3 Double-click **SETUP.exe** to start the installation program.
- 4 Click **Next** to proceed through the installation.
- 5 If needed, provide administrative logon information when prompted. Configuration is defined on the NTL Connector page.



- 6 Configure the Enable NTL Connector Agent options, as follows:
  - a Select the **Enable NTL Connector Agent** check box. This enables the agent to receive and send data to the connector.
  - b Select the **Enable Log Options** check box, which enables the agent to log events.
  - c Enter the port for the agent in the Connector Server Port field. The default is 5000. The agent uses this port to listen for provisioning requests from Select Identity.
- 7 Configure the following settings for reverse synchronization. Perform these steps if you want to synchronize changes made to users on the Windows server with Select Identity.
  - a Select the **Enable Notification Agent** option.
  - b If you want to synchronize the Windows server password with Select Identity, select **Enable Password Synchronization**. This is used by the agent to synchronize user account password changes with Select Identity. The information is sent back to Select Identity in the form of an SPML extendedRequest over SOAP/HTTP or HTTPS.
  - c In the Delay Before Notification field, enter the number of seconds between requests sent to Select Identity.
  - d In the Server field, enter the IP address or fully-qualified name of the server running Select Identity.
  - e In the Port field, enter the port on which Select Identity listens for reverse synchronization requests. For example, on WebLogic, the default is 7001.
  - f Enter the base URL for the Select Identity Web Service in the Base field. The default value is /lmz/webservice/.
  - g Select **HTTP** or **HTTPS** from the Server Type drop-down list. This defines the protocol for transfer of data back to Select Identity.
  - h Enter the name of a user that has administrative privileges on the Windows server in the User Name field.
  - i Enter the password in the Password field. To encrypt the password, run `encode.bat` (on Windows) or `encode.sh` (on UNIX), which is provided in the `weblogic/keystore` subdirectory in the Select Identity home directory. This utility prompts you

for the password to encrypt and will generate the encrypted password. Be sure to copy the entire encrypted password in the field, as shown here:

```

C:\WINDOWS\system32\cmd.exe
Microsoft Windows [Version 5.2.3790]
(C) Copyright 1985-2003 Microsoft Corp.

C:\Documents and Settings\gadiap>cd C:\si3.3.1\weblogic\keystore

C:\si3.3.1\weblogic\keystore>encode.bat
Please enter the string to encode :abc123
Please enter the string to encode again :abc123
(ENC=1zcFrMIGvylj+a8KEWiWo5cx9A+PC0McS2ZWLieW0dUbeK/jGrgha54KOk060h1mrvND2tkUzjoGoYeEEDBpUmlo2dTMl1ywhxwEDnsZLFxT4r349W/0/6sgoPbuJt3C4wYs8rQk0KpeUnq21G9bftJbuU0Bj9k6vU5qCIS7Br1Ds=)

C:\si3.3.1\weblogic\keystore>
  
```

- j Keep the **TimeOut** and **Retries** settings.
- k In the **UserName** field (in the **Operational Attribute** section), enter the administrator account name in **Select Identity**. The default is **sis**.
- l Enter the password of the administrative account in **Select Identity** in the **Password** field.
- m Add the following operational attributes. This builds the operational attributes that are sent in SPML requests back to **Select Identity** for synchronization. Click the **>>** button after each addition.
  - Attribute Name: **urn:trulogica:conceroc:2.0#resourceId**  
Attribute Value: **resource\_name**  
  
This is the name of the resource that you add in **Select Identity** for this NT server. For example, if you specify **NT\_LocalMachine** here, then specify **NT\_LocalMachine** as the resource name in **Select Identity**.
  - Attribute Name: **urn:trulogica:conceroc:2.0#reverseSync**  
Attribute Value: **true**
  - Attribute Name: **urn:trulogica:conceroc:2.0#resourceType**  
Attribute Value: **ntlocal**  
  
This is the name of the XSL file (without the .xsl extension), which provides reverse mappings for the agent to send data to **Select Identity**.
- 8 After defining all of your settings, click **OK**.
- 9 After the installation is complete, click **Finish**.
- 10 Restart the server.

The install process performs the following:

- Creates the target directory with the binaries and support files in the appropriate folders. Places **TLPassfilt.dll** and **TLUtils.dll** in the Windows System directory, **\$WinSysPath\$**. (c:\winnt\system32). The following is the folder structure created:
  - <TARGETDIR>  
The parent folder
  - <TARGETDIR>\Bin  
Program binaries

- <TARGETDIR>\Lib  
Connector library folder
  - <TARGETDIR>\Logs  
Connector log folder
  - <TARGETDIR>\Map  
Mapping of operational attributes
  - <TARGETDIR>\Servers  
Server binaries
- Creates and configures corresponding services.
  - Creates a Program group and shortcuts for the connector configuration console and the uninstall script.
  - Sets up the registry for program parameters.



---

## 6 Uninstalling the Connector

If you want to uninstall Windows NT Local connector from Select Identity, perform the following steps:

- 1 Remove all the resource dependency.
- 2 Delete the connector from Select Identity homepage.
- 3 Uninstall the connector from application server. For more information on this, refer to Connector Integration Guide.
- 4 Uninstall the agent

See *HP OpenView Select Identity Connector Deployment Guide* for more information on deleting the connector from application server and Select Identity.

### Uninstalling the Agent

Perform the following steps to delete the agent on the Windows server:

- 1 From the Start menu, select **Programs** → **HP OpenView NTLocalConnector** → **Uninstall Agent**.
- 2 Complete the uninstallation as prompted by the wizard.

