

# HP QuickTest Professional Web Add-in Extensibility

Software Version: 9.5

---

## Developer's Guide

Manufacturing Part Number: T6513-90037

Document Release Date: January 2008

Software Release Date: January 2008



# Legal Notices

## Warranty

The only warranties for HP products and services are set forth in the express warranty statements accompanying such products and services. Nothing herein should be construed as constituting an additional warranty. HP shall not be liable for technical or editorial errors or omissions contained herein.

The information contained herein is subject to change without notice.

## Restricted Rights Legend

Confidential computer software. Valid license from HP required for possession, use or copying. Consistent with FAR 12.211 and 12.212, Commercial Computer Software, Computer Software Documentation, and Technical Data for Commercial Items are licensed to the U.S. Government under vendor's standard commercial license.

## Third-Party Web Sites

HP provides links to external third-party Web sites to help you find supplemental information. Site content and availability may change without notice. HP makes no representations or warranties whatsoever as to site content or availability.

## Copyright Notices

© 1992 - 2008 Hewlett-Packard Development Company, L.P.

## Trademark Notices

Adobe® and Acrobat® are trademarks of Adobe Systems Incorporated.

Intel®, Pentium®, and Intel® Xeon™ are trademarks of Intel Corporation in the U.S. and other countries.

Java™ is a US trademark of Sun Microsystems, Inc.

Microsoft®, Windows®, Windows NT®, and Windows® XP are U.S registered trademarks of Microsoft Corporation.

Oracle® is a registered US trademark of Oracle Corporation, Redwood City, California.

Unix® is a registered trademark of The Open Group.

SlickEdit® is a registered trademark of SlickEdit Inc.

## Documentation Updates

This manual's title page contains the following identifying information:

- Software version number, which indicates the software version
- Document release date, which changes each time the document is updated
- Software release date, which indicates the release date of this version of the software

To check for recent updates, or to verify that you are using the most recent edition of a document, go to:

**[http://ovweb.external.hp.com/lpe/doc\\_serv/](http://ovweb.external.hp.com/lpe/doc_serv/)**

# Support

You can visit the HP Software Support Web site at: **[www.hp.com/go/hpsoftwaresupport](http://www.hp.com/go/hpsoftwaresupport)**

HP Software online support provides an efficient way to access interactive technical support tools. As a valued support customer, you can benefit by using the support site to:

- Search for knowledge documents of interest
- Submit and track support cases and enhancement requests
- Download software patches
- Manage support contracts
- Look up HP support contacts
- Review information about available services
- Enter into discussions with other software customers
- Research and register for software training

Most of the support areas require that you register as an HP Passport user and sign in. Many also require a support contract. To find more information about access levels, go to:

**[http://h20230.www2.hp.com/new\\_access\\_levels.jsp](http://h20230.www2.hp.com/new_access_levels.jsp)**

To register for an HP Passport ID, go to:

**<http://h20229.www2.hp.com/passport-registration.html>**

---

# Table of Contents

<b>Welcome to This Guide</b> .....	7
How This Guide Is Organized .....	8
Who Should Read This Guide .....	10
QuickTest Professional Online Documentation .....	10
Additional Online Resources.....	12
Typographical Conventions.....	14
<b>Chapter 1: Introducing QuickTest Professional Web Add-in Extensibility</b> .....	<b>17</b>
About QuickTest Professional Web Add-in Extensibility.....	17
Identifying the Building Blocks of Web Add-in Extensibility .....	18
Deciding When to Use Web Add-in Extensibility .....	20
Understanding How to Implement Web Add-in Extensibility .....	28
<b>Chapter 2: Installing the QuickTest Professional Web Add-in Extensibility SDK</b> .....	<b>31</b>
About Installing the QuickTest Professional Web Add-in Extensibility SDK .....	31
Installing the QuickTest Professional Web Add-in Extensibility SDK .....	31
Repairing the QuickTest Professional Web Add-in Extensibility SDK .....	40
Uninstalling the QuickTest Professional Web Add-in Extensibility SDK .....	45
<b>Chapter 3: Planning QuickTest Support for Your Toolkit</b> .....	<b>51</b>
About Planning QuickTest Support for Your Toolkit .....	52
Preparing to Create Support for a Custom Toolkit .....	52
Determining the Toolkit Related Information.....	53
Determining the Support Information for Each Custom Control Type .....	54
Where Do You Go from Here? .....	58

<b>Chapter 4: Developing Support for Your Toolkit .....</b>	<b>59</b>
About Custom Toolkit Support .....	60
Creating a Custom Toolkit Support Set .....	61
Introducing the Custom Toolkit's Object Model to QuickTest .....	63
Understanding the Toolkit Configuration File .....	71
Designing JavaScript Functions for Your Toolkit Support Set .....	73
Teaching QuickTest to Identify the Test Object Class to Use for a Custom Web Control.....	75
Testing the Toolkit Support Set During Development .....	81
Logging and Debugging the Custom Support .....	84
Implementing Support for Test Object Methods.....	86
Implementing Support for Identification Properties .....	92
Implementing a Filter for Learning Child Controls .....	95
Implementing Support for Recording .....	97
<b>Chapter 5: Deploying the Toolkit Support Set.....</b>	<b>101</b>
About Deploying the Custom Toolkit Support.....	101
Deploying the Custom Toolkit Support.....	102
Removing Deployed Support .....	103
<b>Chapter 6: Learning to Create QuickTest Support for a Simple   Custom Web Control .....</b>	<b>107</b>
Preparing for This Lesson .....	108
Planning Support for the Web Add-in Extensibility Book Sample Toolkit .....	109
Developing the Toolkit Support Set.....	118
Lesson Summary.....	145
<b>Chapter 7: Learning to Create QuickTest Support for a   Complex Custom Web Control.....</b>	<b>147</b>
Preparing for This Lesson .....	148
Planning Support for the Web Add-in Extensibility Used Books Control.....	149
Developing the Toolkit Support Set.....	157
Lesson Summary.....	174
<b>Index.....</b>	<b>175</b>

---

# Welcome to This Guide

Welcome to QuickTest Professional Web Add-in Extensibility.

QuickTest Professional Web Add-in Extensibility is a Software Development Kit (SDK) that enables you to support testing applications that use third-party and custom Web controls that are not supported out-of-the-box by the QuickTest Professional Web Add-in.

The QuickTest Professional Web Add-in Extensibility SDK provides the following:

- ▶ An API that enables you to extend the QuickTest Professional Web Add-in to support custom Web controls
- ▶ The online Web Add-in Extensibility Help, which includes the following:
  - ▶ A Developer's Guide
  - ▶ An API Reference
  - ▶ A Toolkit Configuration Schema Help
  - ▶ The QuickTest Test Object Schema Help
- ▶ A printer-friendly (PDF) version of the Developer's Guide
- ▶ Sample Web Add-in Extensibility toolkit support sets that extend QuickTest support for the following environments:
  - ▶ The ASP .NET AJAX control toolkit
  - ▶ A sample Web toolkit that includes controls named **Book** and **UsedBooksTable**

**This chapter includes:**

- ▶ How This Guide Is Organized on page 8
- ▶ Who Should Read This Guide on page 10
- ▶ QuickTest Professional Online Documentation on page 10
- ▶ Additional Online Resources on page 12
- ▶ Typographical Conventions on page 14

## How This Guide Is Organized

This guide explains how to set up the QuickTest Professional Web Add-in Extensibility SDK and use it to extend QuickTest support for third-party and custom Web controls.

This guide assumes you are familiar with QuickTest functionality, and should be used together with the *QuickTest Web Add-in Extensibility Toolkit Configuration Schema Help*, *QuickTest Professional Web Add-in Extensibility API Reference*, and the *QuickTest Test Object Schema Help* that are provided in online Help format with the SDK installation (**Start > Programs > QuickTest Professional > Extensibility > Documentation > Web Add-in Extensibility Help**).

These documents should also be used in conjunction with the *HP QuickTest Professional User's Guide*, the *QuickTest Professional Web Add-in Guide*, and the *HP QuickTest Professional Object Model Reference* (available with the QuickTest Professional installation).

This guide contains:

### Part I Working with Web Add-in Extensibility

Explains how to use QuickTest Professional Web Add-in Extensibility to extend QuickTest support for custom Web controls. This part includes:

- ▶ Introducing QuickTest Professional Web Add-in Extensibility
- ▶ Installing the QuickTest Professional Web Add-in Extensibility SDK
- ▶ Planning QuickTest Support for Your Toolkit



- ▶ Developing Support for Your Toolkit
- ▶ Deploying the Toolkit Support Set

## **Part II Tutorial: Learning to Create Web Custom Toolkit Support**

Guides you step-by-step through the process of creating custom support for some sample controls. This part includes:

- ▶ Learning to Create QuickTest Support for a Simple Custom Web Control
- ▶ Learning to Create QuickTest Support for a Complex Custom Web Control

## **Part III \_API Reference**

Explains the methods exposed by the Web Add-in Extensibility IControlImplUtils utility object interface, and describes the syntax of these methods.

## **Part IV \_Toolkit Configuration Schema Help**

Explains the elements and attributes that you define in a toolkit configuration file.

## **Part V \_QuickTest Test Object Schema Help**

Explains the elements and attributes that you use in a test object configuration file to define the test object model for supporting your toolkit.

---

**Note:** The information, examples, and screen captures in this guide focus specifically on working with QuickTest tests. However, much of the information applies equally to components.

Business components and scripted components are part of HP Business Process Testing, which utilizes a keyword-driven methodology for testing applications. For more information, see the *HP QuickTest Professional User's Guide* and the *HP QuickTest Professional for Business Process Testing User's Guide*.

---

## Who Should Read This Guide

This guide is intended for programmers, QA engineers, systems analysts, system designers, and technical managers who want to extend QuickTest support for Web custom controls.

To use this guide, you should be familiar with:

- ▶ Major QuickTest features and functionality
- ▶ QuickTest Professional Object Model
- ▶ QuickTest Professional Web Add-in
- ▶ XML (basic knowledge)
- ▶ Web Programming (HTML and JavaScript)

## QuickTest Professional Online Documentation

QuickTest Professional includes the following online documentation:

**Readme** provides the latest news and information about QuickTest. Choose **Start > Programs > QuickTest Professional > Readme**.

**QuickTest Professional Installation Guide** explains how to install and set up QuickTest. Choose **Help > Printer-Friendly Documentation > HP QuickTest Professional Installation Guide**.

**QuickTest Professional Tutorial** teaches you basic QuickTest skills and shows you how to design tests for your applications. Choose **Help > HP QuickTest Professional Tutorial**.

**Product Feature Movies** provide an overview and step-by-step instructions describing how to use selected QuickTest features. Choose **Help > Product Feature Movies**.

**Printer-Friendly Documentation** displays the complete documentation set in Adobe portable document format (PDF). Online books can be viewed and printed using Adobe Reader, which can be downloaded from the Adobe Web site (<http://www.adobe.com>). Choose **Help > Printer-Friendly Documentation**.

**QuickTest Professional Help** includes:

- ▶ **What's New in QuickTest Professional** describes the newest features, enhancements, and supported environments in the latest version of QuickTest.
- ▶ **QuickTest User's Guide** describes how to use QuickTest to test your application.
- ▶ **QuickTest for Business Process Testing User's Guide** provides step-by-step instructions for using QuickTest to create and manage assets for use with Business Process Testing.
- ▶ **QuickTest Professional Add-ins Guide** describes how to work with supported environments using QuickTest add-ins, and provides environment-specific information for each add-in.
- ▶ **QuickTest Object Model Reference** describes QuickTest test objects, lists the methods and properties associated with each object, and provides syntax information and examples for each method and property.
- ▶ **QuickTest Advanced References** contains documentation for the following QuickTest COM and XML references:
  - ▶ **QuickTest Automation** provides syntax, descriptive information, and examples for the automation objects, methods, and properties. It also contains a detailed overview to help you get started writing QuickTest automation scripts. The automation object model assists you in automating test management, by providing objects, methods and properties that enable you to control virtually every QuickTest feature and capability.
  - ▶ **QuickTest Test Results Schema** documents the test results XML schema, which provides the information you need to customize your test results.
  - ▶ **QuickTest Test Object Schema** documents the test object XML schema, which provides the information you need to extend test object support in different environments.
  - ▶ **QuickTest Object Repository Schema** documents the object repository XML schema, which provides the information you need to edit an object repository file that was exported to XML.

- ▶ **QuickTest Object Repository Automation** documents the Object Repository automation object model, which provides the information you need to manipulate QuickTest object repositories and their contents from outside of QuickTest.
- ▶ **VBScript Reference** contains Microsoft VBScript documentation, including VBScript, Script Runtime, and Windows Script Host.

To access the QuickTest Professional Help, choose **Help > QuickTest Professional Help**. You can also access the QuickTest Professional Help by clicking in selected QuickTest windows and dialog boxes and pressing F1. Additionally, you can view a description, syntax, and examples for a QuickTest test object, method, or property by placing the cursor on it and pressing F1.

## Additional Online Resources

**Mercury Tours** sample Web site is the basis for many examples in this guide. The URL for this Web site is [newtours.demoaut.com](http://newtours.demoaut.com).

**Knowledge Base** opens directly to the Knowledge Base landing page on the Mercury Customer Support Web site. Choose **Help > Knowledge Base**. The URL for this Web site is [support.mercury.com/cgi-bin/portal/CSO/kbBrowse.jsp](http://support.mercury.com/cgi-bin/portal/CSO/kbBrowse.jsp).

**Customer Support Web site** accesses the HP Software Support Web site. This site enables you to browse the Support Knowledge Base and add your own articles. You can also post to and search user discussion forums, submit support requests, download patches and updated documentation, and more. Choose **Help > Customer Support Web site**. The URL for this Web site is [www.hp.com/go/hpsoftwaresupport](http://www.hp.com/go/hpsoftwaresupport).

Most of the support areas require that you register as an HP Passport user and sign in. Many also require a support contract.

To find more information about access levels, go to:  
[http://h20230.www2.hp.com/new\\_access\\_levels.jsp](http://h20230.www2.hp.com/new_access_levels.jsp)

To register for an HP Passport user ID, go to:  
<http://h20229.www2.hp.com/passport-registration.html>

**Send Feedback** enables you to send online feedback about **QuickTest Professional** to the product team. Choose **Help > Send Feedback**.

**HP Software Web site** accesses the HP Software Web site. This site provides you with the most up-to-date information on HP Software products. This includes new software releases, seminars and trade shows, customer support, and more. Choose **Help > HP Software Web site**. The URL for this Web site is [www.hp.com/go/software](http://www.hp.com/go/software).

## Typographical Conventions

This guide uses the following typographical conventions:

<b>UI Elements and Function Names</b>	This style indicates the names of interface elements on which you perform actions, file names or paths, and other items that require emphasis. For example, “Click the <b>Save</b> button.” It also indicates method or function names. For example, “The <b>wait_window</b> statement has the following parameters:”
<i>Arguments</i>	This style indicates method, property, or function arguments and book titles. For example, “Refer to the <i>HP User’s Guide</i> .”
<b>&lt;Replace Value&gt;</b>	Angle brackets enclose a part of a file path or URL address that should be replaced with an actual value. For example, <b>&lt;MyProduct installation folder&gt;\bin</b> .
Example	This style is used for examples and text that is to be typed literally. For example, “Type Hello in the edit box.”
CTRL+C	This style indicates keyboard keys. For example, “Press ENTER.”
[ ]	Square brackets enclose optional arguments.
{ }	Curly brackets indicate that one of the enclosed values must be assigned to the current argument.
...	In a line of syntax, an ellipsis indicates that more items of the same format may be included. In a programming example, an ellipsis is used to indicate lines of a program that were intentionally omitted.
	A vertical bar indicates that one of the options separated by the bar should be selected.

# Part I

---

## Working with Web Add-in Extensibility





# 1

---

## Introducing QuickTest Professional Web Add-in Extensibility

QuickTest Professional Web Add-in Extensibility enables you to provide high-level support for third-party and custom Web controls that are not supported out-of-the-box by the QuickTest Professional Web Add-in.

### **This chapter includes:**

- ▶ About QuickTest Professional Web Add-in Extensibility on page 17
- ▶ Identifying the Building Blocks of Web Add-in Extensibility on page 18
- ▶ Deciding When to Use Web Add-in Extensibility on page 20
- ▶ Understanding How to Implement Web Add-in Extensibility on page 28

### **About QuickTest Professional Web Add-in Extensibility**

The QuickTest Professional Web Add-in provides built-in support for a number of commonly used Web controls. You use QuickTest Professional Web Add-in Extensibility to extend that support and enable QuickTest to recognize additional Web controls.

When QuickTest learns an object in an application, it recognizes the object as belonging to a specific test object class. This determines the identification properties and test object methods of the test object that represents the application's object in QuickTest.

When QuickTest learns the controls on a Web page without Extensibility, it ignores certain types of elements and does not create test objects to represent the controls they define.

For other Web controls that are not supported out-of-the-box by the Web Add-in, QuickTest creates a generic `WebElement` test object. This type of test object might not have certain characteristics that are specific to the Web control you are testing. Therefore, when you try to create test steps with this test object, the available identification properties and test object methods might not be sufficient.

For example, consider a custom Web control that is a special type of table that QuickTest recognizes as a plain `WebElement`. `WebElement` test objects do not support `GetCellData` operations. To create a test step that retrieves the data from a cell in the table, you would need to create test objects to represent each cell in the table, and create a complex test that accesses the relevant cell's test object to retrieve the data.

By creating support for a Web control using Web Add-in Extensibility, you can direct QuickTest to recognize the control as belonging to a specific test object class, and you can specify the behavior of the test object. You can also extend the list of available test object classes that QuickTest is able to recognize. This enables you to create tests that fully support the specific behavior of your custom Web controls.

## Identifying the Building Blocks of Web Add-in Extensibility

The sections below describe the main elements that comprise QuickTest object support. These elements are the building blocks of Web Add-in Extensibility. By extending the existing support of one or more of these elements, you can develop the support you need to create meaningful and maintainable tests.

### Test Object Classes

In QuickTest, every object in an application is represented by a test object of a specific test object class. The test object class determines the list of identification properties and test object methods available in QuickTest for this test object. The icon used to represent the test object in QuickTest, for example in the Keyword View and Object Repository, is also determined by the test object class.

## **Test Object Names**

When QuickTest learns an object, it creates a unique name for each test object on the page. A descriptive test object name enables you distinguish between test objects of the same class and makes it easier to identify them in your object repository and in tests.

By default, a test object is given the name of its test object class (appended with an index if there is more than one test object of the same class on the page). In many cases, this is not the ideal name for the custom control.

The test object name needs to be meaningful to the QuickTest user, preferably using terminology that is relevant to your toolkit. QuickTest displays this name in the Keyword View, in the Expert View, and in the object repository.

## **Test Object Identification Properties**

The test object class used to represent the Web control determines the list of identification properties available for the test object. It also determines which of these identification properties are used to uniquely identify the control, which identification properties are available for checkpoints (in the Checkpoint Properties dialog box), and which are selected by default for checkpoints. However, the actual values of the identification properties are derived from the definition of the Web control. Therefore, several Web controls that are represented by test objects from the same test object class might have different definitions for the same identification property.

## **Test Object Methods**

The test object class used to represent the Web control determines the list of test object methods for a test object. However, the actual behavior of the test object method depends on the definition of the specific Web control. This means that the same test object method might operate differently for different Web controls that are represented by test objects from the same test object class.

## Recording Events

One way to create QuickTest tests is by recording user operations on the application. When you start a recording session, QuickTest listens for events that occur on objects in the application and registers corresponding test steps. The test object class used to represent a Web control determines which events QuickTest can listen for on the Web control and what test step to record for each event that occurs.

## Deciding When to Use Web Add-in Extensibility

The QuickTest Professional Web Add-in provides a certain level of support for most Web controls, but ignores controls defined as DIV or SPAN elements. Before you extend support for a custom Web control, analyze it from a QuickTest perspective to view the extent of this support and to decide which elements of support you need to modify.

When you analyze the custom Web control, use the Object Spy, Keyword View, Expert View, and the Record option. Make sure you examine each of the elements described in “Identifying the Building Blocks of Web Add-in Extensibility”, above.

If you are not satisfied with the existing object identification or behavior, your Web control is a candidate for Web Add-in Extensibility, as illustrated in the following situations:

- ▶ QuickTest might recognize the control using a test object class that does not fit your needs. You can use Web Add-in Extensibility to instruct QuickTest to identify the custom control as belonging to a new test object class that you create.
- ▶ The test object class that QuickTest uses for the control might be satisfactory, but you would like to customize the behavior of certain test object methods or identification properties. You can use Web Add-in Extensibility to create a new test object class that extends the one QuickTest uses, override the implementation of these properties and methods with your own custom implementation, and instruct QuickTest to use the new test object class.

- ▶ You might find that the test object names QuickTest generates for all objects of a certain control type are identical (except for a unique counter) or that the name used for the test object does not clearly indicate the control it represents. You can use Web Add-in Extensibility to create a new test object class that extends the one QuickTest uses, modify how QuickTest names test objects of your new class, and instruct QuickTest to use the new test object class.
- ▶ QuickTest might identify individual sub-controls within your custom control, but not properly identify your main control. For example, if your main custom control is a digital clock with edit boxes containing the hour and minute digits, you might want changes in the time to be recognized as SetTime operations on the clock control and not as Set operations on the edit boxes. You can use Web Add-in Extensibility to modify how events that occur on child controls are treated.
- ▶ During a record session, when you perform operations or trigger events on your control, QuickTest might not record a step at all, or it might record steps that are not specific to the control's behavior. Alternatively, QuickTest might record many steps for an event that should be considered a single operation, or it might record a step when no step should be recorded.

You can configure the events you want to record for each type of existing Web object by modifying the Web event configuration. For more information, see the section on configuring web event recording in the *HP QuickTest Professional Add-ins Guide*.

If Web event configuration does not sufficiently enable you to customize recording, for example, if you want to modify the steps that QuickTest records when certain events occur, you can use Web Add-in Extensibility.

## Analyzing the Default QuickTest Support and Extensibility Options for a Sample Custom Control

The following example illustrates how you can use Web Add-in Extensibility to improve the QuickTest support of a custom control.

The Book control shown below represents a book sold on the Internet. This control is not specifically supported on QuickTest.



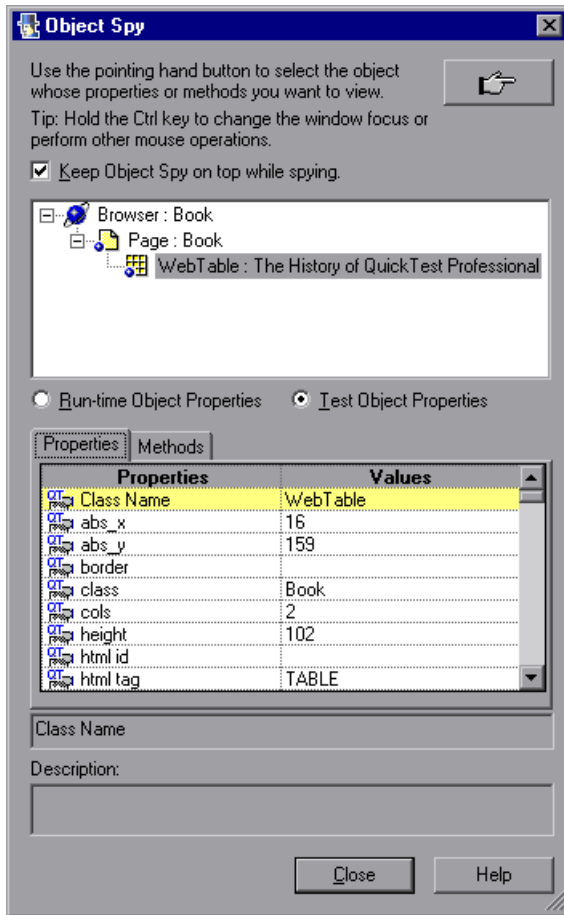
This control contains information including the title of the book, its authors, the price for a new copy of the book, and the lowest price for which a used copy can be purchased.

Clicking on the title of the book opens a page with more details about the book. Clicking on an author name opens a page with a list of books by the same author. Clicking on **Used** opens a Used Books page, listing all of the available used copies of the book, and their prices.

The Book control is implemented as a Web table, as follows:

```
<table class="Book">
  <tr>
    <td class="BookImageCell" rowspan="4">
      <a href=".\QtpHistory.htm">
        
      </a>
    </td>
    <td class="BookCell">
      <a class="BookTitle" href=".\QtpHistory.htm" >
        The History of QuickTest Professional</a>
    </td>
  </tr>
  <tr>
    <td class="BookCell">
      By: <a href=".\JaneDoe.htm">Jane Doe</a>,
        <a href=".\JohnDoe.htm">John Doe</a>
    </td>
  </tr>
  <tr>
    <td class="BookCell">
    </td>
  </tr>
  <tr>
    <td class="BookCell">
      New: <strong>59.99$</strong> &nbsp;
      <a href=".\UsedBooks.htm">Used:</a> from <strong>29.99$</strong>
    </td>
  </tr>
</table>
```

Therefore, if you point to this control using the Object Spy, QuickTest recognizes it as a WebTable object named according to the title of the book. The icon used for the test object is the standard WebTable class icon.





If you record on the Book control without implementing support for it, the Keyword View looks like this:

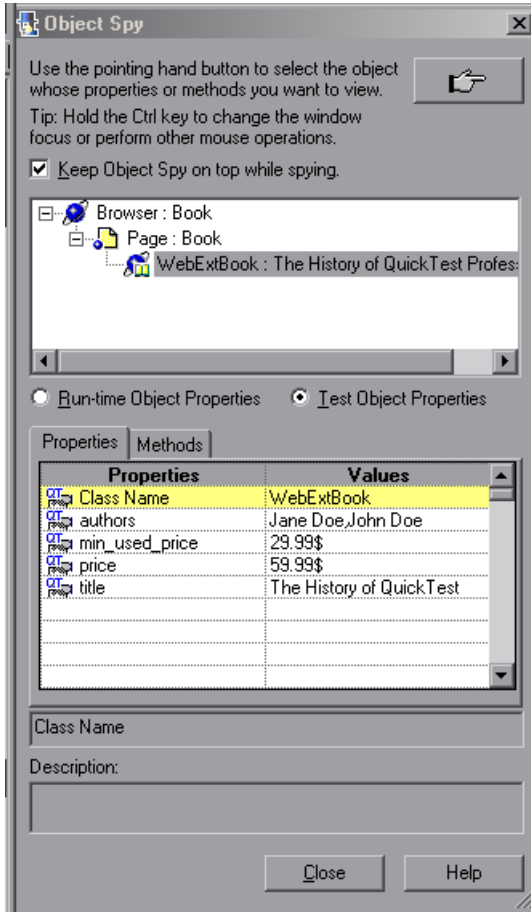
Item	Operation	Value	Documentation
▼ Action1			
▼ Book			
▼ Book			
The History ...	Click		Click the "The History of QuickTest" link.
Book	Click		Click the "Book" image.
Jane Doe	Click		Click the "Jane Doe" link.
Used:	Click		Click the "Used:" link.

In the Expert View, the recorded test looks like this:

```
Browser("Book").Page("Book").Link("The History of QuickTest").Click
Browser("Book").Page("Book").Image("Book").Click
Browser("Book").Page("Book").Link("Jane Doe").Click
Browser("Book").Page("Book").Link("Used:").Click
```

Note that only simple **Click** steps are recorded, each attributed to a different object defined within the book control. **Click** operations are recorded independently on Web Link test objects with different names, or on the Book image test object. These steps are not helpfully meaningful in the context of this control.

If you use Web Add-in Extensibility to support the Book control, the result is more meaningful. QuickTest recognizes the control as a **WebExtBook** test object (still named according to the book title) and uses a different icon. The test object properties include relevant information, such as **authors** and **min\_used\_price**, which provide the names of all the book's authors and the lowest price for which a used copy can be purchased.



When you are ready to create a test on the control, the **Select**, **GoToAuthorPage**, and **GoToUsedBookPage** methods are supported. These methods can be recorded or you can select them manually in the Operation column of the Keyword View. When recording a test, both clicking on the book's image and clicking its title result in a **Select** step being recorded.

You can also create a checkpoint to check the value of identification properties, for example, **authors** (that provides a string comprised of all the books authors).

In the Keyword View, a test created by recording the same user operations as the test shown above will look like this:

Item	Operation	Value	Documentation
▼ Action1			
▼ Book			
▼ Book			
The History of QuickTest	Select		Select the "The History of QuickTest" book.
The History of QuickTest	Select		Select the "The History of QuickTest" book.
The History of QuickTest	GoToAuthorPage	"Jane Doe"	Open the Web page for "Jane Doe".
The History of QuickTest	GoToUsedBooksPage		Open the "The History of QuickTest" used books page.

In the Expert View, the test looks like this:

```
Browser("Book").Page("Book").WebExtBook("The History of QuickTest").Check CheckPoint("The History of
Browser("Book").Page("Book").WebExtBook("The History of QuickTest").Select
Browser("Book").Page("Book").WebExtBook("The History of QuickTest").GoToAuthorPage "Jane Doe"
Browser("Book").Page("Book").WebExtBook("The History of QuickTest").GoToUsedBooksPage
```

This test is more meaningful and relevant for the Book control's functionality.

## Understanding How to Implement Web Add-in Extensibility

Using Web Add-in Extensibility, you can implement full support for all QuickTest features for your controls. You can implement Web Add-in Extensibility support for a set of controls (also referred to as a **toolkit** or **custom toolkit**) by developing a **toolkit support set**.

Implementing Web Add-in Extensibility consists of the following stages:

### 1 Planning the Toolkit Support Set

- ▶ Determine the set of Web controls that comprise your custom toolkit.
- ▶ Define the test object model by determining which test objects and operations you want to support based on the controls and business processes supported by your toolkit.

For more information, see “Planning QuickTest Support for Your Toolkit” on page 51.

### 2 Developing the Toolkit Support Set

A Web Add-in Extensibility toolkit support set is comprised of the following files:

- ▶ One **test object configuration** file, which describes the test object model for your toolkit to QuickTest.
- ▶ One **toolkit configuration** file, which describes which test object class represents each control in the toolkit and how QuickTest interacts with each control.
- ▶ One or more files containing JavaScript functions that QuickTest can call to perform operations on the custom controls.

For more information, see “Developing Support for Your Toolkit” on page 59.

### **3 Deploying the Toolkit Support Set**

To deploy your toolkit support set and enable QuickTest to support your controls, you need to copy the files you created to specific locations within the QuickTest installation folder.

After you deploy the toolkit support set, when QuickTest opens, it displays your toolkit name as a child node under the Web Add-in node in the Add-in Manager. If you select the check box for your toolkit, QuickTest supports the controls in this toolkit using the toolkit support set that you developed.

For more information, see “Deploying the Toolkit Support Set” on page 101.

### **4 Enhancing the Toolkit Support Set**

After you have created and tested basic Web Add-in Extensibility support for your controls you can enhance your toolkit support set by using some of the more complex options to fine-tune your support.

When you develop a Web Add-in Extensibility toolkit support set, you can start by creating a simple and basic support set and deploying it to QuickTest. This enables QuickTest to recognize your controls correctly and enables QuickTest user to create and run tests on the controls. You can then enhance your support to enable more complex capabilities, such as filtering the child objects learned with a control and more advanced handling of events when recording a test.

You can learn how to develop a toolkit support set hands-on, by performing the lessons in “Tutorial: Learning to Create Web Custom Toolkit Support” on page 105.

For more information, see “Developing Support for Your Toolkit” on page 59.



# 2

---

## Installing the QuickTest Professional Web Add-in Extensibility SDK

This chapter describes the installation process for the QuickTest Professional Web Add-in Extensibility SDK and the content of the SDK.

### **This chapter includes:**

- ▶ About Installing the QuickTest Professional Web Add-in Extensibility SDK on page 31
- ▶ Installing the QuickTest Professional Web Add-in Extensibility SDK on page 33
- ▶ Repairing the QuickTest Professional Web Add-in Extensibility SDK Installation on page 40
- ▶ Uninstalling the QuickTest Professional Web Add-in Extensibility SDK on page 45

### **About Installing the QuickTest Professional Web Add-in Extensibility SDK**

The Web Add-in Extensibility API is an intrinsic part of QuickTest and does not require any additional installation. The QuickTest Professional Web Add-in Extensibility SDK installation provides the Web Add-in Extensibility documentation and samples of completed toolkit support sets.

After you install the SDK, you can access the documentation from **Start > Programs > QuickTest Professional > Extensibility > Documentation**. You can use the sample toolkit support sets to learn more about implementing Web Add-in Extensibility.

Installing the QuickTest Professional Web Add-in Extensibility SDK on a QuickTest computer enables you to work more efficiently when debugging and testing your custom toolkit support. However, you can also install and use the SDK on a computer without QuickTest. You can create the toolkit support set for your Web controls on any computer. To test and debug the toolkit support set you must deploy it to QuickTest. For more information, see “Deploying the Toolkit Support Set” on page 101.

## Using the Web Add-in Extensibility Samples

The Web Add-in Extensibility samples are installed in the following locations:

- ▶ The Book application is installed in **<QuickTest Professional Web Add-in Extensibility SDK installation folder>\samples\WebExtSample\Application**. You can run this application from **Start > Programs > QuickTest Professional > Extensibility > Samples > Web Add-in Extensibility Book Sample**.
- ▶ The toolkit support set for the Book application is installed in **<QuickTest Professional Web Add-in Extensibility SDK installation folder>\samples\WebExtSample\Toolkit Support Set**.

In Part II, “Tutorial: Learning to Create Web Custom Toolkit Support”, you create a similar toolkit support set for the Book application and deploy it to QuickTest.

- ▶ The toolkit support set for the ASP .NET AJAX control toolkit is installed in **<QuickTest Professional Web Add-in Extensibility SDK installation folder>\dat\Extensibility\Web** (and in the **Toolkits** subfolder within this folder). The toolkit support set includes a Help file that describes the test objects that represent the ASP .NET AJAX controls and the test object methods and properties available for these test objects.

---

**Note:** The sample toolkit support set for the ASP .NET AJAX controls toolkit does not support recording on the `ASPAjaxSlider`, `ASPAjaxReorderList`, and `ASPAjaxResizableControl` test object classes, due to a Web Add-in Extensibility limitation.

---



If you install the Web Add-in Extensibility SDK in the QuickTest installation folder on a computer on which QuickTest is installed, the toolkit support set for the ASP .NET AJAX control toolkit is deployed to QuickTest. When you open QuickTest, the **ASPAjax** environment is displayed in the Add-in Manager dialog box. You can select the check box for this environment, instructing QuickTest to load the support for the ASP .NET AJAX control toolkit, or you can clear the check box for the **ASPAjax** environment and see how QuickTest recognizes the ASP .NET AJAX controls without Extensibility support.

If you do not install the Web Add-in Extensibility SDK in the QuickTest installation folder, you can manually deploy the ASPAjax toolkit support set to QuickTest. To deploy the toolkit support set, you must copy the relevant files from **<QuickTest Professional Web Add-in Extensibility SDK installation folder>\dat\Extensibility\Web** to the **<QuickTest Professional installation folder>\dat\Extensibility\Web** folder.

For more information, see “Deploying the Toolkit Support Set” on page 101.

## Installing the QuickTest Professional Web Add-in Extensibility SDK

Use the QuickTest Professional Setup program to install the QuickTest Professional Web Add-in Extensibility SDK on your computer.

---

**Note:** You must be logged on with Administrator privileges to install the QuickTest Web Add-in Extensibility SDK.

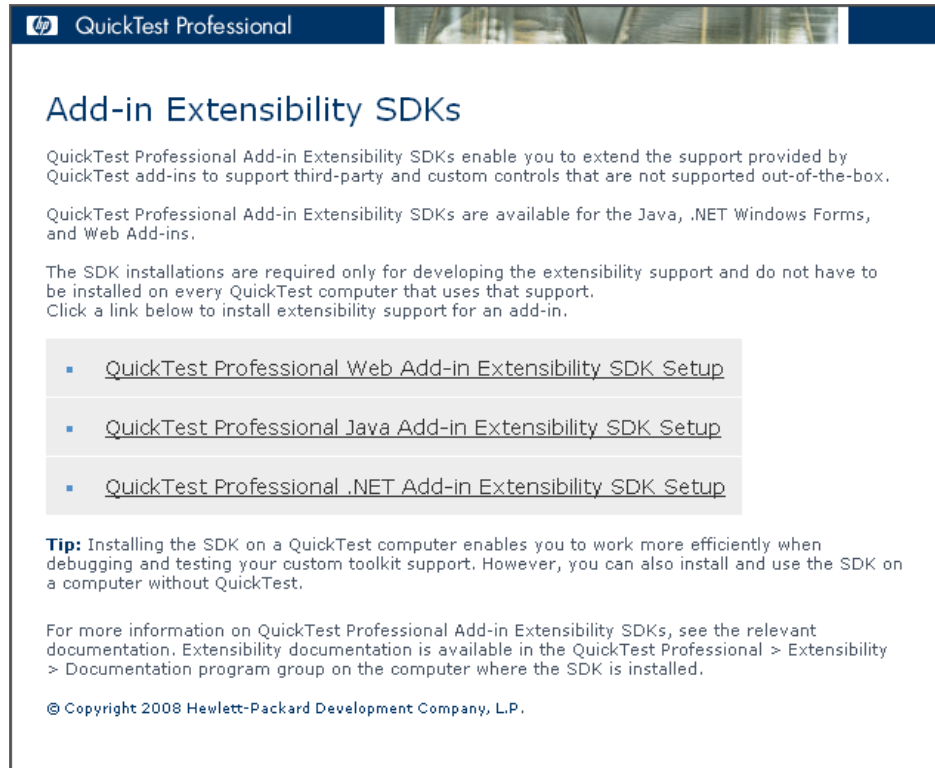
---

**To install the QuickTest Professional Web Add-in Extensibility SDK:**

- 1 Insert the QuickTest Professional DVD into the CD-ROM/DVD drive. The QuickTest Professional Setup window opens. (If the window does not open, browse to the DVD and double-click **setup.exe** from the root folder.)

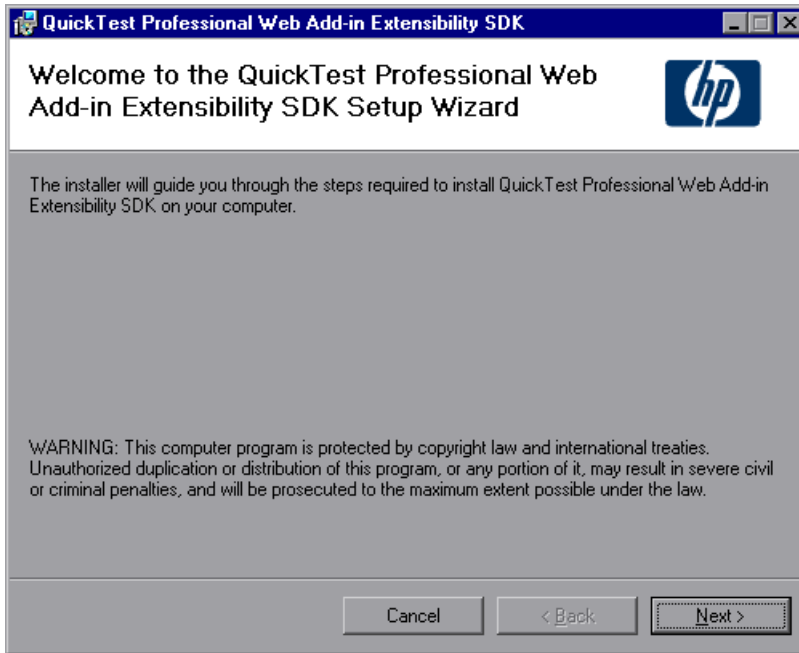


2 Click **Add-in Extensibility SDKs**. The Add-in Extensibility SDKs screen opens.



**3 Click QuickTest Professional Web Add-in Extensibility SDK Setup.**

The Welcome screen of the QuickTest Professional Web Add-in Extensibility SDK Setup Wizard opens.



---

**Note:** If the wizard screen that enables you to select whether to repair or remove the SDK installation opens, the QuickTest Professional Web Add-in Extensibility SDK is already installed on your computer. Before you can install a new version, you must first uninstall the existing one, as described in “Uninstalling the QuickTest Professional Web Add-in Extensibility SDK” on page 45.

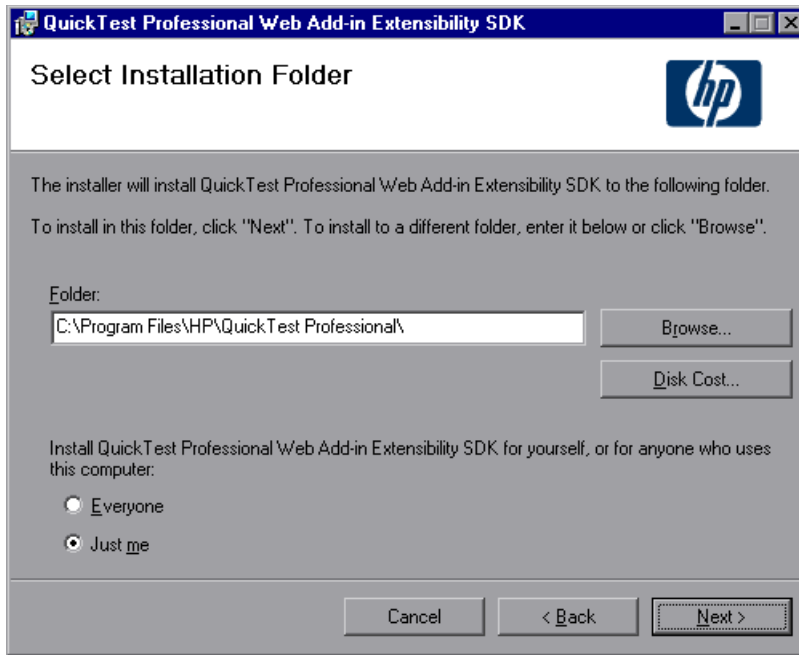
---

4 Click **Next**. The License Agreement screen opens.



Read the license agreement and select **I Agree**.

5 Click **Next**. The Select Installation Folder screen opens.



- This screen displays the location in which the QuickTest Professional Web Add-in SDK will be installed.

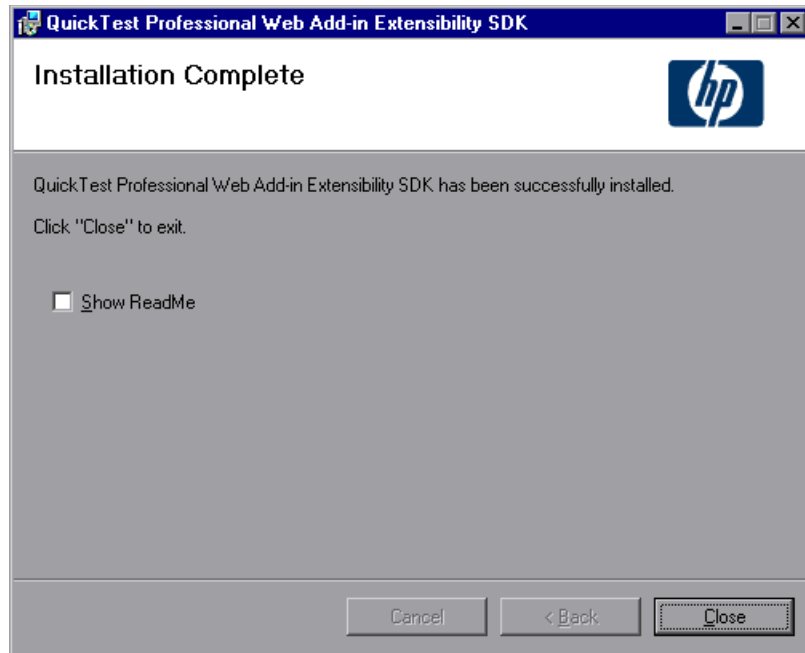
To select a different location for the installation, click **Browse**, choose a folder, and then click **OK**.

---

**Important:** If you are installing the Web Add-in Extensibility SDK on a QuickTest computer, install the SDK in the QuickTest installation folder. This deploys the toolkit support set for the ASP .NET AJAX control toolkit to QuickTest, enabling you to load QuickTest support for this toolkit from the QuickTest Add-in Manager dialog box.

---

- ▶ If you click **Disk Cost**, a window opens displaying the amount of free disk space on your computer and the amount required for this installation. The space required for the installation includes space required for the QuickTest Professional Web Add-in Extensibility SDK files and folders (on the disk that you select for this installation) and additional space required on the system disk (the disk on which the operation system is installed), which is used only during the installation process.
  - ▶ Select **Just me** if you want to limit the access to the QuickTest Professional Web Add-in Extensibility SDK you are installing. Otherwise, select **Everyone** to enable anyone who uses this computer to use the SDK.
- 6 Click **Next**. The setup program installs the QuickTest Professional Web Add-in SDK and opens the Installation Complete screen.



- 7 In the Installation Complete screen, if you select the **Show Readme** check box, the QuickTest Professional Web Add-in Extensibility Readme file opens after you click **Close**. The Readme file contains the latest technical and troubleshooting information. To open the Readme file at another time, select **Start > Programs > QuickTest Professional > Extensibility > Documentation > Web Add-in Extensibility Readme**.

Click **Close** to exit the setup wizard.

## Repairing the QuickTest Professional Web Add-in Extensibility SDK Installation

Your QuickTest Professional DVD enables you to repair an existing QuickTest Professional Web Add-in SDK installation by replacing any missing or damaged files from your previous installation.

---

**Note:** To use the QuickTest Professional DVD to repair an installation, you must use the same DVD that you used for the original installation.

---



**To repair the QuickTest Professional Web Add-in Extensibility SDK installation:**

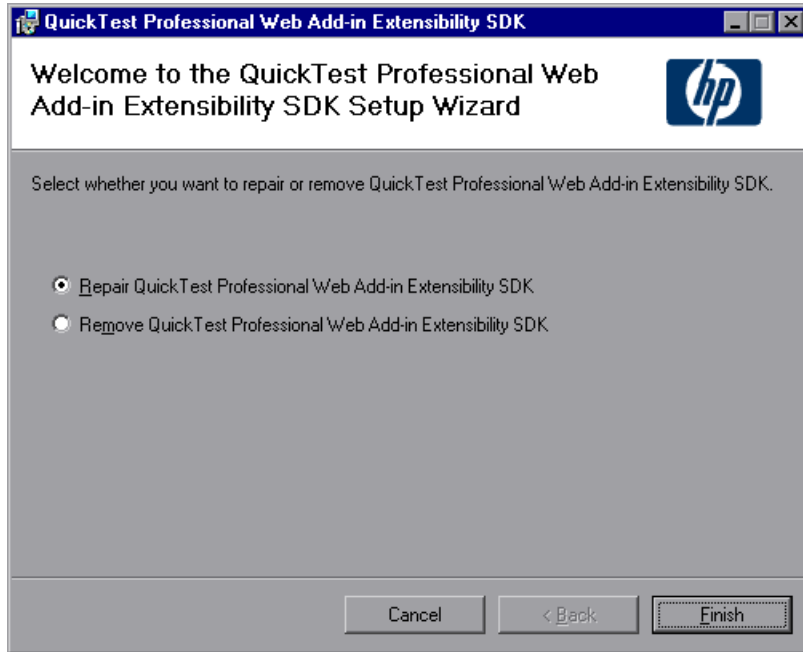
- 1 Insert the QuickTest Professional DVD into the CD-ROM/DVD drive. The QuickTest Professional Setup window opens. (If the window does not open, browse to the DVD and double-click **setup.exe** from the root folder.)



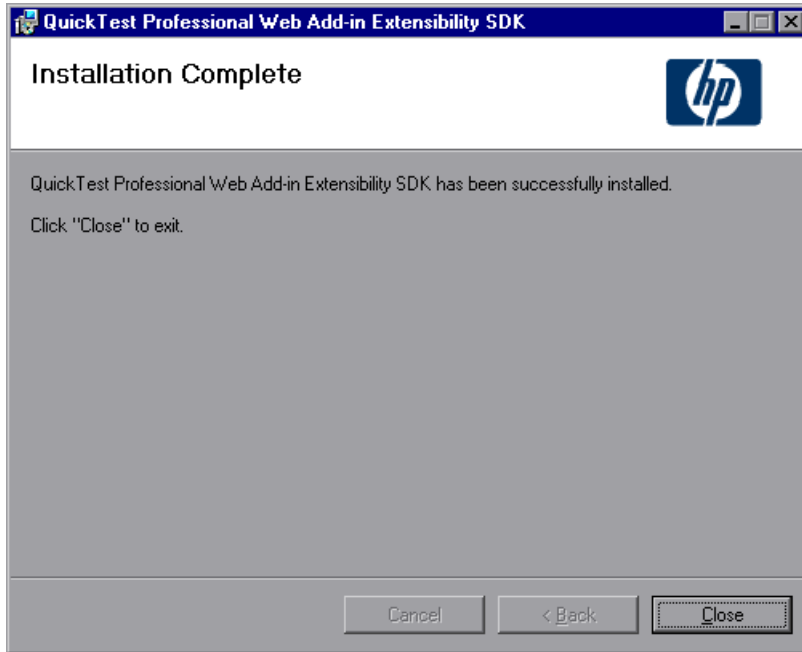
**2** Click **Add-in Extensibility SDKs**. The Add-in Extensibility SDKs screen opens.



- 3 Click **QuickTest Professional Web Add-in Extensibility SDK Setup**. The Web Add-in Extensibility SDK Setup Wizard opens, enabling you to select whether to repair or remove the SDK installation.



- 4 Select **Repair** and click **Finish**. The Setup program replaces the QuickTest Professional Web Add-in Extensibility SDK files and opens the Installation Complete screen.



- 5 In the Installation Complete screen, click **Close** to exit the Setup wizard.

## Uninstalling the QuickTest Professional Web Add-in Extensibility SDK

You can uninstall the QuickTest Professional Web Add-in SDK by using **Add/Remove Programs** as you would for other installed programs. Alternatively, you can use the setup program on the QuickTest Professional DVD.

---

**Note:**

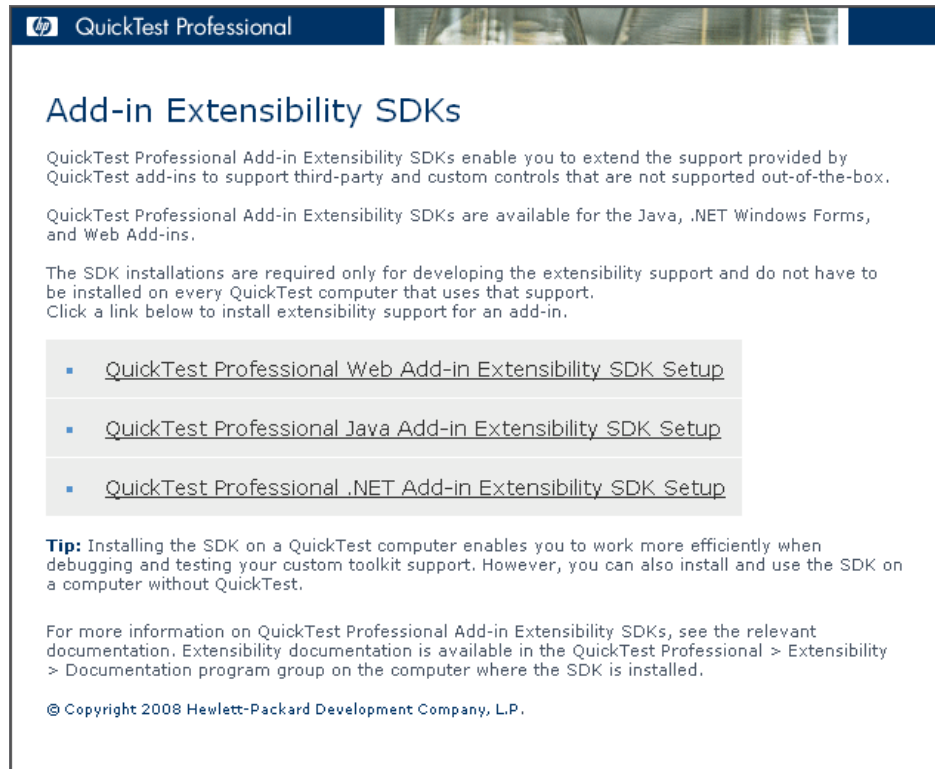
- ▶ You must use the same DVD that you used for the original installation.
  - ▶ You must be logged on with Administrator privileges to uninstall the QuickTest Web Add-in Extensibility SDK.
-

**To uninstall the QuickTest Professional Web Add-in Extensibility SDK:**

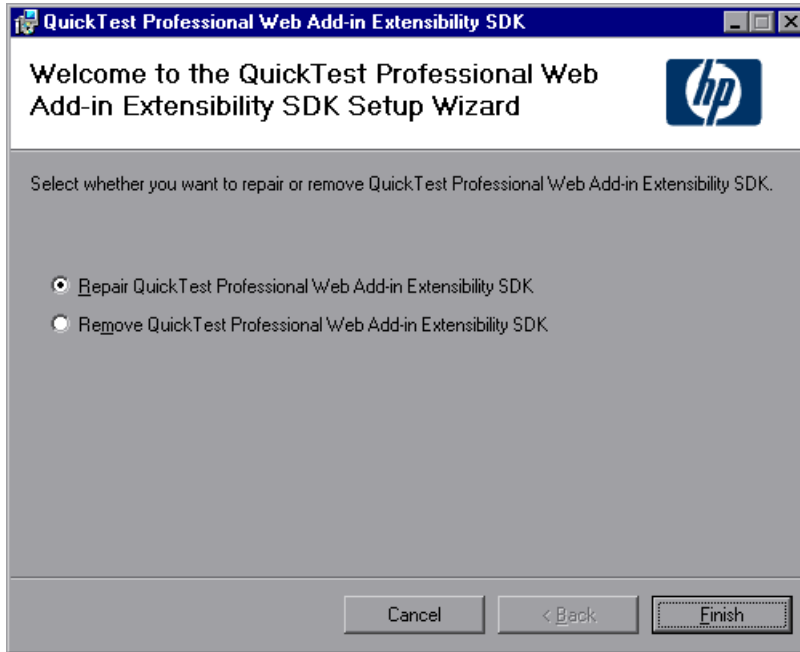
- 1 Insert the QuickTest Professional DVD into the CD-ROM/DVD drive. The QuickTest Professional Setup window opens. (If the window does not open, browse to the DVD and double-click **setup.exe** from the root folder.)



2 Click **Add-in Extensibility SDKs**. The Add-in Extensibility SDKs screen opens.

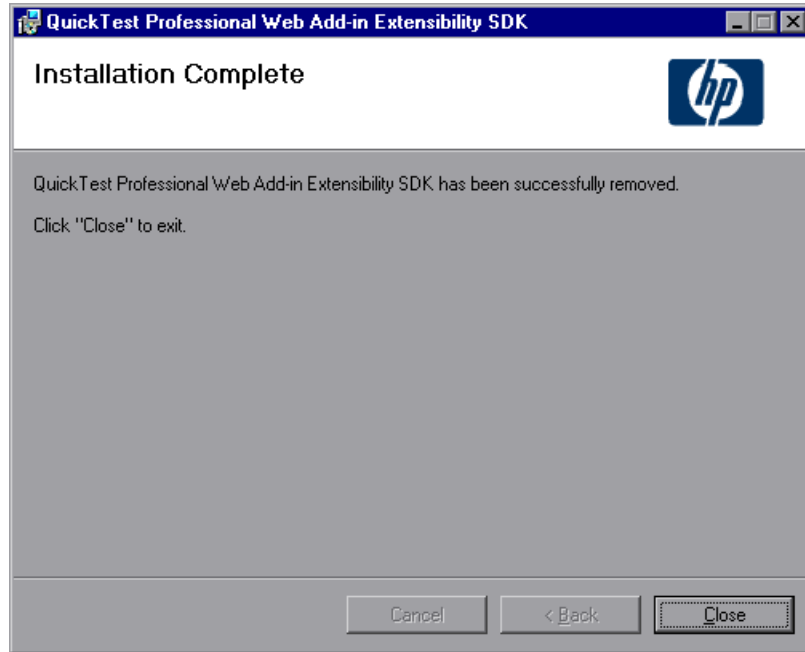


- 3 Click **QuickTest Professional Web Add-in Extensibility SDK Setup**. The Web Add-in Extensibility SDK Setup Wizard opens, enabling you to select whether to repair or remove the SDK.





- 4 Select **Remove** and click **Finish**. The Setup program removes the QuickTest Professional Web Add-in Extensibility SDK and opens the Installation Complete screen.



- 5 In the Installation Complete screen, click **Close** to exit the Setup wizard.



# 3

---

## Planning QuickTest Support for Your Toolkit

Before you begin to create support for a custom toolkit, you must carefully plan the support. Detailed planning of how you want QuickTest to recognize the custom controls enables you to correctly build the fundamental elements of the custom toolkit support.

**This chapter includes:**

- ▶ About Planning QuickTest Support for Your Toolkit on page 52
- ▶ Preparing to Create Support for a Custom Toolkit on page 52
- ▶ Determining the Toolkit Related Information on page 53
- ▶ Determining the Support Information for Each Custom Control Type on page 54
- ▶ Where Do You Go from Here? on page 58

---

**Note:** This chapter assumes familiarity with the concepts presented in Chapter 1, “Introducing QuickTest Professional Web Add-in Extensibility.”

---

## About Planning QuickTest Support for Your Toolkit

Extending the QuickTest Professional Web Add-in's support to recognize custom controls is a process that requires detailed planning. To assist you with this, the sections in this chapter include sets of questions related to the implementation of support for your custom toolkit and its controls. When you create your toolkit support set, you will be implementing it based on the answers you provide to these questions.

The first step is determining general information related to your custom toolkit, after which you will define the specific information related to each control you want to support.

## Preparing to Create Support for a Custom Toolkit

Before you begin planning support for custom Web controls, make sure you have full access to the controls and understand their behavior. You must have an application or Web page in which you can view the controls in action, and view the source that implements them.

You do not need to modify any of a custom control's sources to support it in QuickTest, but you do need to be familiar with them. Make sure you know what elements and attributes the control comprises, what HTML properties it has, the events for which you can listen, and so on.

## Determining the Toolkit Related Information

When you plan your toolkit support set, begin by deciding the general toolkit related information:

- ▶ Provide a unique name for the toolkit or environment for which you are creating support.

QuickTest displays the name of your environment in all of the dialog boxes that display lists of add-ins or supported environments. For example, when QuickTest opens, it displays the name of your environment as a child of the Web Add-in in the Add-in Manager dialog box and the QuickTest user can specify whether to load support for that environment.

- ▶ Decide which controls this toolkit support set will support.
- ▶ Decide what files will contain the JavaScript functions that you write for the toolkit support set.
  - ▶ You can specify one default file for the JavaScript functions that implement support for the different QuickTest functionalities and the different test object classes. In addition, you can define separate files for your implementation functions for the different functionalities and test object classes.
  - ▶ You can specify one file that contains common JavaScript functions that you call from within others.
- ▶ Decide whether to use one JavaScript function for the whole toolkit to match test object classes to the custom controls. For more information, “Teaching QuickTest to Identify the Test Object Class to Use for a Custom Web Control” on page 75.

When you design the toolkit support set, you specify this information in the toolkit configuration file. For more information, see “Understanding the Toolkit Configuration File” on page 71.

## Determining the Support Information for Each Custom Control Type

When planning custom support for a specific type of control, carefully consider how you want QuickTest to recognize controls of this type—what type of test object you want to represent the controls in QuickTest tests, which identification properties and test object methods you want to use, and so on. Make these decisions based on the business processes that might be tested using this type of control and operations that users are expected to perform on these controls.

You can run an application containing the custom control and analyze the control from a QuickTest perspective using the Object Spy, the Keyword View, and the Record option. This enables you to see how QuickTest recognizes the control without custom support, and helps you to determine what you want to change.

To view an example of analyzing a custom control using QuickTest, see “Analyzing the Default QuickTest Support and Extensibility Options for a Sample Custom Control” on page 22.

### Understanding the Web Add-in Extensibility Planning Checklist

When you plan the support for a specific type of control, you must ask yourself a series of questions. These are explained below and are available in an abbreviated, printable checklist on page 57.

- 1 Make sure you have access to an application that runs the custom control on a computer with QuickTest installed.
- 2 Is there an existing Web test object class which can be extended to represent the custom control? If so, which one? If not, your new test object class needs to extend the WebElement class.

- 3 If the new test object class extends a base test object class other than WebElement, does the control include an element of the type normally represented by the base test object class (also referred to as a base element)?
  - If not, you will need to implement all of the test object methods defined in the base class and a method that returns values for all of the test class' identification properties.
  - If the control includes a base element, is it the root Web element of the control?
    - If it is the root element, QuickTest will use its internal implementation for the inherited test object methods and identification properties that you do not override.
    - If the base element is not the root element, you need to implement a JavaScript function that returns the base element.
- 4 Define the details for the new test object class that will represent the custom control in QuickTest tests:
  - a Specify the test object class name.
  - b Do you want QuickTest to use a different icon for the new test object? If so, make sure the icon file is available in an uncompressed .ico format. Recommended location: <QuickTest Professional installation folder>\dat\Extensibility\<QuickTest add-in name>\Toolkits\<Environment name>\res.
  - c Specify one or more identification properties that can be used to uniquely identify the control (in addition to the test object class).
  - d Specify the default test object method to be displayed in the Keyword View and Step Generator when a step is generated for a test object of this class.
  - e Do you want to provide a Help file, which QuickTest will open when F1 is pressed for test objects of this class in the Keyword View or Expert View? If so, make sure that the Help file is available in .chm format. Recommended location: <QuickTest Professional installation folder>\dat\Extensibility\<QuickTest add-in name>\Toolkits\<Environment name>\help.

When you design the toolkit support set, you specify this information in the test object configuration file. For more information, see “Introducing the Custom Toolkit’s Object Model to QuickTest” on page 63.

- 5** Which properties will you use to determine what test object class represents controls of this type? Decide how to design the process of identifying the test object class to use for this control. For more information, see “Teaching QuickTest to Identify the Test Object Class to Use for a Custom Web Control” on page 75.
- 6** Specify the basis for naming the test object that represents the control.
- 7** What identification properties do you want to support? Which properties should be displayed in the Checkpoint Properties dialog box in QuickTest, and which should be selected by default in this dialog box? Which identification properties can be used for Smart Identification?
- 8** What the test object methods you want to support? Specify the method argument types and names, and whether it returns a value in addition to the return code.  
Optionally, specify the location of a Help file, which QuickTest will open when F1 is pressed in the Keyword View or Expert View or the Operation Help button is clicked in the Step Generator for a test object method.
- 9** Do you want to dynamically provide a list of possible values for any test object method arguments? Which?
- 10** Which types of children should QuickTest learn with the control?
- 11** Should the Object Spy display test objects of this class?
- 12** Do you want to provide support for creating QuickTest tests by using the Record option?  
If so, list the events you want to record on the custom control during a QuickTest recording session.
- 13** Determine what parts of the support need to be designed in the toolkit configuration file and what parts need JavaScript functions.

---

**Note:** You can use the checklist on the following page to mark your answers.

---



## Web Add-in Extensibility Planning Checklist

Use this checklist to plan the support for your custom control.

<input checked="" type="checkbox"/>	<b>Custom Control Support Planning Checklist</b>	<b>Specify in Toolkit XML?</b>	<b>Support by JavaScript function?</b>
<input type="checkbox"/>	The sources for this custom control are located in:	n/a	n/a
<input type="checkbox"/>	Specify the Web test object base class that the new test object class extends: (Default—WebElement)	n/a	n/a
<input type="checkbox"/>	<p>Is the base test object class WebElement? <b>Yes/No</b></p> <p>If No, is there a base element (an element that matches the base test object class)? <b>Yes/No</b></p> <p>If there is a base element, do you need a JavaScript function to return it?<b>Yes/No</b></p>	<b>Yes/No</b>	<b>Yes/No</b>
<input type="checkbox"/>	<p>Specify the New Web test object class details:</p> <ul style="list-style-type: none"> <li>▶ Test object class name:</li> <li>▶ Icon file location (optional):</li> <li>▶ Identification properties for description:</li> <li>▶ Default test object method:</li> <li>▶ Help file location:</li> </ul>	n/a	n/a
<input type="checkbox"/>	Specify the basis for identifying the test object class to use for the control:	<b>Yes/No</b>	<b>Yes/No</b>
<input type="checkbox"/>	Specify the basis for naming the test object:	n/a	<b>Yes</b>
<input type="checkbox"/>	List the identification properties to support. Mark which should be available (and which selected by default) for checkpoints and which (if any) should be used for Smart Identification:	<b>Yes/No</b>	<b>Yes/No</b>

<input checked="" type="checkbox"/>	<b>Custom Control Support Planning Checklist</b>	<b>Specify in Toolkit XML?</b>	<b>Support by JavaScript function?</b>
<input type="checkbox"/>	List the test object methods to support (if required, include arguments, return values, Help file location and Help ID):	Yes/No	Yes/No
<input type="checkbox"/>	Provide a dynamic list of values for any test object method arguments? <b>Yes/No</b> (default) If so, list the arguments:	n/a	Yes/No
<input type="checkbox"/>	Specify the types of children that QuickTest should learn with the control:	Yes/No	Yes/No
<input type="checkbox"/>	Display test objects of this class in the Object Spy? <b>Yes</b> (default)/ <b>No</b>	Yes/No	n/a
<input type="checkbox"/>	Provide support for recording? <b>Yes/No</b> If so, list the events that should trigger recording:	Yes/No	Yes/No

## Where Do You Go from Here?

After you finish planning the custom toolkit support, you create the toolkit support set to support the custom toolkit as per your plan. Chapter 4, “Developing Support for Your Toolkit” explains how to develop the toolkit support set.

# 4

---

## Developing Support for Your Toolkit

This chapter explains how to create support for a custom Web toolkit. It explains what files you have to create for the toolkit support set, the structure and content of these files, and how to use them to support the different QuickTest capabilities for your environment.

For information on where the toolkit support set files should be stored to activate the support you design, see Chapter 5, “Deploying the Toolkit Support Set”.

### **This chapter includes:**

- ▶ About Custom Toolkit Support on page 60
- ▶ Creating a Custom Toolkit Support Set on page 61
- ▶ Introducing the Custom Toolkit’s Object Model to QuickTest on page 63
- ▶ Understanding the Toolkit Configuration File on page 71
- ▶ Designing JavaScript Functions for Your Toolkit Support Set on page 73
- ▶ Teaching QuickTest to Identify the Test Object Class to Use for a Custom Web Control on page 75
- ▶ Testing the Toolkit Support Set During Development on page 81
- ▶ Logging and Debugging the Custom Support on page 84
- ▶ Implementing Support for Test Object Methods on page 86
- ▶ Implementing Support for Identification Properties on page 92
- ▶ Implementing a Filter for Learning Child Controls on page 95
- ▶ Implementing Support for Recording on page 97

## About Custom Toolkit Support

You implement Web Add-in Extensibility by creating a **toolkit support set** for each Web toolkit you want to support. The toolkit support set is comprised of XML configuration files and JavaScript functions. The XML configuration files define the test object classes that you create to support the custom Web controls and map them to the controls. In addition, they define how QuickTest operates on the custom controls. The JavaScript functions provide an interface between QuickTest and the application being tested, retrieving information about the control and performing operations on it.

This chapter describes the different files, definitions, and functions that you must include in a custom toolkit support set. For more information, see the *QuickTest Web Add-in Extensibility Toolkit Configuration Schema Help*, the *QuickTest Web Add-in Extensibility API Reference*, and the *QuickTest Test Object Schema Help* (available in the QuickTest Professional Web Add-in Extensibility online Help).

The Web Add-in Extensibility SDK provides a sample toolkit support set that extends QuickTest support for the ASP .NET AJAX control toolkit. The sample also includes a Help file for the test object model that QuickTest uses to support testing controls from this toolkit. The toolkit support set files are installed in **<QuickTest Professional Web Add-in Extensibility SDK installation folder>\dat\Extensibility\Web** (and in the **Toolkits** subfolder within this folder). You can browse through these files to see examples of how Web Add-in Extensibility can be implemented. Some of the examples in this chapter are taken from these files.

---

**Note:** Before you actually begin to create a toolkit support set, you must plan it carefully. For more information, see “Planning QuickTest Support for Your Toolkit” on page 51.

---

## Creating a Custom Toolkit Support Set

A Web Add-in Extensibility toolkit support set is comprised of the following files:

- One **test object configuration** file, which describes the test object model for your toolkit to QuickTest: The test object classes that QuickTest should use to represent controls in your toolkit, and the properties and test object methods that need to be supported for the test objects. For more information, see “Introducing the Custom Toolkit’s Object Model to QuickTest” on page 63.

---

**Note:** QuickTest loads all of the test object class definitions (from all of the test object configuration files) when it opens, regardless of the custom toolkit for which they were created. This enables you to use the same test object class definitions when supporting different custom toolkits.

---

- One **toolkit configuration** file, which describes which test object class represents each control in the toolkit and how QuickTest interacts with each control. For more information, see “Understanding the Toolkit Configuration File” on page 71.
- One or more files containing JavaScript functions that QuickTest can call to retrieve information from or perform operations on the custom controls.
- Optionally, icon files that contain icons used in QuickTest to represent the test object classes that you define, and Help files that describe these test object classes and their methods and properties.

Chapter 5, “Deploying the Toolkit Support Set” describes the names of the different files required for a toolkit support set, and the folder structure in which they are stored.

**To create a custom toolkit support set:**

- 1** Choose a unique name to represent the toolkit or environment for which you are creating support.

You use the custom toolkit name to compose the name of the toolkit folder and the toolkit configuration file. The name must start with a letter and can contain only alphanumeric characters and underscores.

Providing unique toolkit names enables a single QuickTest installation to support numerous custom toolkit support sets simultaneously. For this reason, a name such as MyToolkit is not recommended.

- 2** Create a folder for your toolkit support set.

You can choose any convenient name and location for this folder.

- 3** Create the following folder structure: **<toolkit support set folder>\Toolkits\<toolkit environment name>\res.**

- 4** In the toolkit support set folder, create a file named **<toolkit environment name>TestObjects.xml**. This is the test object configuration file.

- 5** In the **<toolkit support set folder>\Toolkits\<toolkit environment name>** folder, create the following:

- ▶ A file named **<toolkit environment name>.xml** (this is the toolkit configuration file)
- ▶ One or more files that will contain the JavaScript functions you design

- 6** You can use the **<toolkit support set folder>\Toolkits\<toolkit environment name>\res** folder you created to store any icons that you provide to represent your test object classes in QuickTest and Help files that describe the test objects in your environment.

## Introducing the Custom Toolkit's Object Model to QuickTest

The first stage of developing support for a custom toolkit is to introduce the test object model that you want QuickTest to use to test your applications and controls. To do this, you define the test object model in the test object configuration file. You need to create a test object class for every type of custom control for which you want to extend or modify QuickTest support. For more information, see “Extending an Existing Test Object Class” on page 66 and “Providing a Help File for Customized Test Object Classes” on page 70.

In a test object configuration XML, you define the test object classes (for example, their identification properties, the test object methods they support, and so on). To do this, you define a **ClassInfo** element for each test object class. In addition, you define the name of the environment for which the test object classes are intended, and the QuickTest add-in which they extend. If the relevant add-in is not loaded when QuickTest opens, QuickTest does not load the information in this XML. Similarly, if the environment name is displayed in the Add-in Manager dialog box and the check box for this environment is not selected, the information in this XML is not loaded.

A test object class definition can include the following:

- ▶ The name of the new test object class and its attributes, including the base class—the test object class that the new test object class extends. The test object class name must be unique among all of the environments whose support a QuickTest user might load simultaneously. For example, do not use names of test object classes from existing QuickTest add-ins, such as WebButton, WebEdit, Page, etc.
- ▶ The path of the icon file to use for this test object class (Optional. If not defined, a default icon is used.) The icon file must be in an uncompressed **.ico** format.
- ▶ A context-sensitive Help topic to open when F1 is pressed for the test object in the Keyword View or Expert View. The definition includes the Help file path and the relevant Help ID within the file.

- The methods of the new test object, including the following information for each method:
  - The arguments, including the argument type (String or Variant) and direction (In or Out).
  - Whether the argument is mandatory, and, if not, its default value.
  - Whether a dynamic list of possible values for this argument can be retrieved from the supported control and displayed in the Keyword View, Expert View, and Step Generator.
  - The method description (shown as a tooltip in the Keyword View, Expert View, and Step Generator).
  - The Documentation string (shown in the Documentation column of the Keyword View and in the Step Generator).
  - The return value type.
  - A context-sensitive Help topic to open when F1 is pressed for the test object method in the Keyword View or Expert View, or when the Operation Help button is clicked for the method in the Step Generator. The definition includes the Help file path and the relevant Help ID within the file.
- The test object method that is selected by default in the Keyword View and Step Generator when a step is generated for an object of this class.
- The identification properties of the new test object.
  - The identification properties that are used for the object description.
  - The identification properties that are used for Smart Identification (Smart Identification needs to be enabled for these definitions to take effect).
  - The identification properties that are available for use in checkpoints.
  - The identification properties that are selected by default for checkpoints (in the QuickTest Checkpoint Properties dialog box).

For information on the structure and syntax of this XML, see the QuickTest Test Object Schema Help, available in the QuickTest Professional Web Add-in Extensibility online Help.



Each time you run QuickTest, it reads all of the test object configuration XMLs and merges the information for each test object class from the different XMLs into one test object class definition. For more information, see “Understanding How QuickTest Merges Test Object Configuration Files” on page 68.

The following example shows the definition of the **WebExtUsedBooks** test object definition, which is part of the **WebExtSample** toolkit used for the tutorial section of this guide:

```
<ClassInfo BaseClassInfoName="WebTable" GenericTypeID="Table"
           DefaultOperationName="SelectBook"
           Name="WebExtUsedBooks">
  <IconInfo IconFile="INSTALLDIR\Data\Extensibility\Web\Toolkits
                \WebExtSample\res\WebBookList.ico"/>
  <TypeInfo>
    <Operation ExposureLevel="CommonUsed" Name="SelectBook"
               PropertyType="Method">
      <Description>
        Selects the radio button for the specified book and clicks Select.
      </Description>
      <Documentation><![CDATA[Select the radio button for the book with
                               index %a1 and click Select.]]></Documentation>
      <Argument Name="BookIndex" IsMandatory="true" Direction="In">
        <Type VariantType="Integer"/>
      </Argument>
    </Operation>
  </TypeInfo>
  <IdentificationProperties>
    <IdentificationProperty ForDefaultVerification="true"
                           ForVerification="true" ForDescription="true"
                           Name="title"/>
  </IdentificationProperties>
</ClassInfo>
```

This example shows that the **WebExtUsedBooks** test object class extends the **WebTable** test object class. The **WebExtUsedBooks** test object class uses the **WebBookList.ico** icon file, its default test object method is **SelectBook** (which has one Integer mandatory input parameter: **BookIndex**), and it has one additional identification property: **title**.

One identification property is defined for the **WebExtUsedBooks** test object class: **title**. This identification property is used in the object description, available for checkpoints, and selected by default in the Checkpoint Properties dialog box in QuickTest.

## Extending an Existing Test Object Class

If there is an existing test object class that provides partial support for your control, but needs some modification, for example, a different naming convention for test objects in the class, or additional or modified test object methods, you create a new test object class to represent the control. When you create the new test object class, you base this test object class on the existing test object class, inheriting all of its test object methods.

You can then extend the functionality of this test object class by defining and implementing additional test object methods and identification properties. In addition, you can override existing test object methods by providing an alternate implementation for them. You define the new or changed methods and properties in the test object configuration file, and design their implementation using JavaScript functions.

To extend an existing test object class, you define the name of the base test object class in the **ClassInfo\BaseClassInfoName** attribute in the **ClassInfo** element for the new test object class in the test object configuration file. This declares that the new test object class supports all of the test object methods of the base test object class in addition to any that you define for the new test object class.

You must ensure that all of the inherited test object methods are implemented and not only declared. One way to do this is to write JavaScript functions to support each inherited test object method. Another, simpler way is to ensure that the control includes an element of the type that matches the base test object class. This element is referred to as the **base element**. QuickTest can then use its internal implementation for the inherited test object methods that you do not specifically implement for the custom control, communicating with the base element.

In addition, if the control includes a base element, QuickTest uses the base test object class implementation to retrieve the identification property values when the following conditions are met:

- ▶ In the test object configuration file, you defined identification properties for the new test object class with the same names as properties of the base test object class.
- ▶ You do not implement a JavaScript function that retrieves the values for those properties.

If the base element is the root element of the control that you are supporting, QuickTest recognizes the base element and uses the base test class implementation for test object methods and identification properties that you do not implement.

If the base element is not the root element of the control, you must write a JavaScript function that returns this base element to QuickTest, and specify the name and location of the JavaScript function in the toolkit configuration file. You specify this information in the **Control\Settings** element in the toolkit configuration file. For example, if your control is a special kind of table, and is defined as a DIV element (which QuickTest normally ignores) that contains a table element (which QuickTest normally represents with a WebTable element), you can create a MyWebTable test object class that extends WebTable and map the DIV element to this the MyWebTable test object class. To return the base element, you implement a JavaScript function named **get\_base\_table** in a file named **HPTable.js**. In the toolkit configuration **Settings** element for the MyWebTable Control element, you define the **func\_to\_get\_base\_elem** as follows:

```
<Control TestObjectClass=MyWebTable>
  <Settings>
    <Variable name="default_imp_file " value="HPTable.js"/>
    <Variable name="func_to_get_base_elem" value="get_base_table"/>
  </Settings>
</Control>
```

## Understanding How QuickTest Merges Test Object Configuration Files

Each time you open QuickTest, it reads all of the test object configuration files located in the <QuickTest installation folder>\dat\Extensibility\<QuickTest add-in name> folders. QuickTest then merges the information for each test object class from the different files into a single test object class definition, according to the priority of each test object configuration file.

You define the priority of each test object configuration file using the **Priority** attribute of the **TypeInformation** element.

---

### Notes:

- ▶ If the priority of a test object configuration file is higher than the existing class definitions, it overrides any existing test object class definitions, including built-in QuickTest information. For this reason, be aware of any built-in functionality that will be overridden before you change the priority of a test object configuration file.
- ▶ QuickTest ignores the definitions in a test object configuration files in the following situations:
  - a. The **Load** attribute of the **TypeInformation** element is set to **false**.
  - b. The environment relevant to the test object configuration file is displayed in the Add-in Manager dialog box, and the QuickTest user selects not to load the environment.

---

When multiple test object class definitions exist, QuickTest must handle any conflicts that arise. The following sections describe the process QuickTest follows when **ClassInfo**, **ListOfValues**, and **Operation** elements are defined in multiple test object configuration files. All of the **IdentificationProperty** elements for a specific test object class must be defined in only one test object configuration file.

### **ClassInfo Elements**

- If a **ClassInfo** element is defined in a test object configuration file with a priority higher than the existing definition, the information is appended to any existing definition. If a conflict arises between **ClassInfo** definitions in different files, the definition in the file with the higher priority overrides (replaces) the information in the file with the lower priority.
- If a **ClassInfo** element is defined in a test object configuration file with a priority that is equal to or lower than the existing definition, the differing information is appended to the existing definition. If a conflict arises between **ClassInfo** definitions in different files, the definition in the file with the lower priority is ignored.

### **ListOfValues Elements**

- If a conflict arises between **ListOfValues** definitions in different files, the definition in the file with the higher priority overrides (replaces) the information in the file with the lower priority (the definitions are not merged).
- If a **ListOfValues** definition overrides an existing list, the new list is updated for all arguments of type **Enumeration** that are defined for operations of classes in the same test object configuration file.
- If a **ListOfValues** is defined in a configuration file with a lower priority than the existing definition, the lower priority definition is ignored.

### **Operation Elements**

- **Operation** element definitions are either added, ignored, or overridden, depending on the priority of the test object configuration file.
- If an **Operation** element is defined in a test object configuration file with a priority higher than the existing definition, the operation is added to the existing definition for the class. If a conflict arises between **Operation** definitions in different files, the definition in the file with the higher priority overrides (replaces) the definition with the lower priority (the definitions are not merged).

## Providing a Help File for Customized Test Object Classes

As part of the QuickTest Professional online Help, QuickTest provides an Object Model Reference for the test object classes that it defines. The reference is intended to help the QuickTest users use QuickTest test objects, methods, and properties in their tests. In addition, when F1 is pressed for a test object or test object method in the Keyword View or Expert View, or when the Operation Help button is clicked for a test object method in the Step Generator, QuickTest opens the Object Model Reference to the relevant location.

When you modify test object classes or define new ones, using test object configuration XML definitions, you can provide similar (**.chm**) Help files for the test objects, methods, and properties that you define. Deploy these Help files as part of your toolkit support set and inform the users where they can be found. You can store the Help files in any convenient location. For example, in a **<QuickTest Professional installation folder>\dat\Extensibility\<QuickTest add-in name>\Toolkits\<Environment name>\help** folder. In the test object configuration XML, you define **HelpInfo** elements for test object classes and test object methods, specifying the Help file path and the relevant Help ID within the file.

---

**Important:** The Help file name must be different from the names of the Help files provided in the **<QuickTest Professional installation folder>\help** folder.

---

When F1 or the Operation Help button is pressed for a test object class or test object method for which you defined a **HelpInfo** element, QuickTest opens the context-sensitive Help topic you specified. For inherited test object methods that do not have a **HelpInfo** element, QuickTest opens the Help provided for the base test object class.

In the Help that you provide for your test object classes, it is helpful to specify the following information for each test object class:

- ▶ The base test object class that this test object class extends (include a note explaining that the descriptions for inherited test object methods not covered in this Help can be found in the Help for the base test object class).

- A list of the available test object methods (including the inherited methods)
- Descriptions of the test object methods that you defined, including the method's purpose, syntax, arguments, return value, and any other relevant information.
- A list of the available identification properties and descriptions for those properties

## Understanding the Toolkit Configuration File

To begin developing your toolkit support set, you define a basic toolkit configuration file. You can verify the toolkit configuration file you design against the <QuickTest Web Add-in Extensibility installation folder>\dat\Extensibility\Web\Toolkits\Toolkit.xsd file. (This file is also located in the <QuickTest Professional installation folder>\dat\Extensibility\Web\Toolkits folder.)

In a toolkit configuration XML, you must define a **Control** element for each test object class that you plan to use to support controls in your toolkit. Each **Control** element must include a **TestObjectClass** attribute that specifies the name of the test object class to which it applies.

The **Control** elements are contained within one **Controls** element, which represents the toolkit as a whole.

The toolkit configuration file must provide information that enables QuickTest to identify which test object class to use for each control in the toolkit. This information can be provided at toolkit level or at control level, as described in the following sections.

The toolkit configuration XML can also contain additional information. A brief summary of the possible content of this XML is provided below and more detail on how to design and use the toolkit configuration XML is provided in the subsequent sections of this guide.

The toolkit specific information can include:

- The priority of the toolkit. When QuickTest attempts to identify the test object class mapped to a custom control, it searches in the different toolkits in the order of their priority (highest priority first).
- An identification function (and optionally the name of the file that contains the function) used to identify the test object class to use for each control in the toolkit.
- The name of the default file from which implementation functions are called if no file is specifically defined for a test object class.

A test object class element can include:

- An identification function (and optionally the name of the file that contains the function) or identification conditions used to identify the custom controls that should be represented by this test object class.
- The name of the default file from which implementation functions are called if no file is specifically defined for a function.
- A function (and optionally the name of the file that contains that function) that returns the element whose test object implements the properties and test object methods inherited from the base class and not implemented for this control.
- The functions (and optionally the name of the file containing those functions) that implement the test object methods of this test object class. QuickTest calls these functions to perform test steps on the control. If no functions are defined, QuickTest calls implementation functions with the same name as the test object methods.
- The function (and optionally the name of the file containing the function) that retrieves the identification properties from the control. If no function is defined, QuickTest calls a function named **get\_property\_value**.
- Elements that indicate whether to use the default Web Event Configuration for handling events on the control and its children, and can specify functions that QuickTest should run to perform customized event listening and handling.
- Elements that indicate when to learn the control and its children, and optionally, a function that specifies which children to learn.



- Elements that indicate whether to display test objects of this class in the Object Spy.
- A function (and optionally the name of the file containing the function) that retrieves the list of possible values for a test object method argument from the control. If no function is defined, QuickTest calls a function named **get\_list\_of\_values**.

---

**Note:** When planning the order of the **Control** elements in this file, consider that QuickTest follows this order when searching for a test object class to match a control. The first matching test object class is used.

---

For information on the structure and syntax of this XML, see the Toolkit Configuration Schema Help, available in the QuickTest Professional Web Add-in Extensibility online Help.

## Designing JavaScript Functions for Your Toolkit Support Set

As part of the toolkit support set, you design JavaScript functions that QuickTest calls. The Web Add-in Extensibility API provides the following conventions, utility object methods and JavaScript functions for you to use in the JavaScript functions that you design:

- **\_elem**. A token that represents the Web element that QuickTest is currently handling. For example, the following JavaScript function returns the value of the **id** identification property of the current Web element:

```
function get_property_value(prop)
{
    if (prop == "id")
    {
        return _elem.id;
    }
}
```

- ▶ **IControllImplUtils**. The interface for utility objects whose methods you can use to instruct QuickTest to perform different operations. To call methods of objects that implement this interface, call `_util.<method_name>`.
- ▶ **toSafeArray** (*inArr*). A JavaScript function that you can run to convert an array variable to the SafeArray type format that is required in some of the utility object methods. This JavaScript function is defined in the **common.js** file located in the <QuickTest Web Add-in Extensibility installation folder>\dat\Extensibility\Web\Toolkits folder (and also in the <QuickTest Professional installation folder>\dat\Extensibility\Web\Toolkits folder).

## Using the Utility Object Interface

As part of the toolkit support set, you design JavaScript functions that QuickTest calls. The **IControllImplUtils** utility object interface exposes the following methods that you can call in the JavaScript functions that you design:

- ▶ **Alert** (*message*). Opens a modal message box displaying the specified message.
- ▶ **RegisterForEvent** (*element, eventName, handler, [HandlerParam]*). Registers to listen for a specific event on a specific Web element. Use this method in a JavaScript function that controls listening to events to support recording. For more information on developing support for recording, see “Implementing Support for Recording” on page 97.
- ▶ **Record** (*method, arrParams, delay*). Adds a step to the test and adds a test object to the object repository if it is not already there. Use this method in a JavaScript function that records a step in a test after an event occurs on a control. For more information on developing support for recording, see “Implementing Support for Recording” on page 97.
- ▶ **Report** (*status, method, arrParams, details*). Adds information about the run results of a test step to the Test Results. Use this method in a JavaScript function that performs a step on a control. For more information on developing support for running tests, see “Implementing Support for Test Object Methods” on page 86.

- ▶ **LogLine** (*text, severity*). Sends a message to the Event Viewer. Use this method to help you analyze the performance of your support set or debug its functionality. For more information on using the Event Viewer to debug your toolkit support set, see “Logging and Debugging the Custom Support” on page 84.

For more information about these utility object methods, see the *QuickTest Web Add-in Extensibility API Reference* (available with the Web Add-in Extensibility SDK online Help).

## **Teaching QuickTest to Identify the Test Object Class to Use for a Custom Web Control**

After you define the test object classes that you want QuickTest to use to represent your controls, you need to map each type of control to a specific test object class.

This identification can be performed using JavaScript functions or condition elements that check the control’s properties and determine the test object class that should represent it. To improve performance, define the identification elements in such a way that JavaScript function calls are avoided as much as possible.

You provide information enabling QuickTest to identify which test object class to use for the different controls in the **Controls\CommonIdentification** element in the toolkit configuration file, or in the **Control\Identification** element. In these elements you can define the following:

- ▶ A set of conditions per test object class. When QuickTest handles each control, QuickTest checks the control's HTML properties against the conditions you define in each **Control** element, and locates the first one whose conditions the control meets.
- ▶ One JavaScript identification function for the whole toolkit. When QuickTest handles each control, QuickTest calls this function, which checks the control's properties and returns the appropriate test object class.
- ▶ A JavaScript identification function per test object class. When QuickTest handles each control, QuickTest calls each of these JavaScript functions, in the order in which the test objects are defined in the toolkit configuration file. Each function checks whether the test object class for which it is defined should represent the control. QuickTest uses the first test object class whose function returns **true**.

This method of identification should be avoided if possible because it significantly affects performance, as it involves many calls to JavaScript functions for each control.

- ▶ You can also combine the use of conditions and JavaScript functions, defining conditions that limit the calls to the JavaScript function you define, based on the control's properties. For more information, see "Using the Identification\Conditions Elements" on page 77.

For more information, see "Designing JavaScript Functions for Your Toolkit Support Set" on page 73.

**Important:**

- ▶ If you specify an identification function at the toolkit level (in the **Controls\CommonIdentification** element) and also conditions at the test object class level (in the **Control\Identification** element), QuickTest checks the conditions before calling the JavaScript function, to avoid unnecessary calls.
  - ▶ If you specify an identification function at the toolkit level (in the **Controls\CommonIdentification** element), QuickTest does not call any identification functions specified at the test object class level (in the **Control\Identification** element).
- 

For information on the structure and syntax of the identification elements, see the Toolkit Configuration Schema Help, available in the QuickTest Professional Web Add-in Extensibility online Help.

After you teach QuickTest to identify the Test Object Class to use for the custom control, you can test the basic functionality of your toolkit support set. For more information, see “Testing the Toolkit Support Set During Development” on page 81.

**Using the Identification\Conditions Elements**

You can define **Conditions** elements in the **Control\Identification** element defined for a test object class. This enables QuickTest to identify the controls that should be represented by this test object class, based on the control’s properties, without calling an identification function. Alternatively, you can define an identification function (per test object class or for the whole toolkit) and use the conditions to limit the times QuickTest calls the function. You do this by defining that the identification function be called only in cases when the control’s properties meet certain conditions.

You compose the **Conditions** using a set of **Condition** elements, joined by either **and** or **or** logic. Each **Condition** element specifies a certain property of the HTML control, and the expected value for that property. The condition is met if the value in the control's property matches the specified value (you can specify in the condition whether the value must be equal or not equal to the specified value). You can nest **Conditions** elements to create complex logic.

For each set of conditions, that is for each **Conditions** element, you specify one of the following types, instructing QuickTest how to treat the control if its properties match the conditions within it:

- ▶ **IdentifyIfPropMatch**. If the conditions in this element are met, use the current test object class to represent the control.
- ▶ **CallIDFuncIfPropMatch**. If the conditions in this element are met, call the identification function to check this control. Otherwise, do not use the current test object class to represent the control.
- ▶ **SkipIfPropMatch**. If the conditions in this element are met, do not use the current test object class to represent the control.

---

**Important:**

- ▶ If a **Conditions** element of type **IdentifyIfPropMatch** is defined, it is checked before the other types.
  - ▶ If both **CallIDFuncIfPropMatch** and **IdentifyIfPropMatch** **Conditions** elements are defined, the **Conditions** of type **IdentifyIfPropMatch** take precedence.
  - ▶ A **Conditions** element of type **SkipIfPropMatch** is checked only if no other types of **Conditions** elements are defined.
  - ▶ If you nest **Conditions** elements, the type attribute of the nested elements is ignored.
-

## Understanding How HTML Properties are Compared for Conditions

When comparing the value of an HTML property specified in a condition with the specified expected value, the following rules apply:

- ▶ String value comparisons are not case-sensitive.
- ▶ When specifying a string value, a regular expression can be provided as the expected value. In this case, set the **is\_reg\_exp** attribute to **true**.
- ▶ Numeric value comparisons simply compare the numeric values.
- ▶ When comparing a Boolean value, the values **true**, **1**, and **yes** are all considered true. The values **false**, **0**, and **no**, are all considered false.
- ▶ If the HTML property that you are checking returns an object, use **valid** and **null** as the expected values. The property is considered **valid** if it successfully returns an object, and **null** if it fails to return an object.
- ▶ Set the **equal** attribute in the Condition element to **false** if you want to check if the property does not have a certain value.

The following examples illustrate different ways that you can use the **Conditions** element:

### Example 1: Identification Function and Conditions

```
<Identification type="javascript" function="isCalendar">
  <Conditions type="CallIDFuncIfPropMatch" logic="or">
    <Condition prop_name="CalendarBehavior" expected_value="valid"/>
    <Condition prop_name="PopupBehavior" expected_value="valid"/>
  </Conditions>
</Identification>
```

### Example 2: Conditions Only

```
<Identification>
  <Conditions type="IdentifyIfPropMatch" logic="and">
    <Condition prop_name="AccordionBehavior" expected_value="valid"/>
  </Conditions>
  <Conditions type="SkipIfPropMatch" logic="or">
    <Condition prop_name="AccordionBehavior" expected_value="null"/>
  </Conditions>
</Identification>
```

### Example 3: Nested Conditions nodes

```
<Identification>
  <Conditions type="IdentifyIfPropMatch" logic="and">
    <Condition prop_name="tagName" expected_value="div"/>
    <Conditions logic="or">
      <Condition prop_name="id" expected_value="hp_table_1"/>
      <Condition prop_name="id" expected_value="hp_table_2"/>
    </Conditions>
  </Conditions>
  <Conditions type="SkipIfPropMatch" logic="and">
    <Condition prop_name="tagName" expected_value="div" equal="false"/>
  </Conditions>
</Identification>
```

For information on the structure and syntax of the **Conditions** and **Condition** elements, see the Toolkit Configuration Schema Help, available in the QuickTest Professional Web Add-in Extensibility online Help.



## Testing the Toolkit Support Set During Development

After you define your test object model in the test object configuration file, and define a basic toolkit configuration file enabling QuickTest to identify which test object classes to use for the different controls, you can test the existing functionality of the toolkit support set. To do this, you deploy the toolkit support set and test how QuickTest interacts with the controls in your environment.

After you complete additional stages of developing support for your environment, you can deploy the toolkit support set again and test additional areas of interaction between QuickTest and your controls (learning test objects, running tests, and so on).

### To test your toolkit support set after defining the test object classes and mapping them to custom Web elements:

- 1** In the test object configuration file, set the **TypeInformation\DevelopmentMode** attribute to **true**, to ensure that QuickTest reads all of the test object class information from the file each time it opens. When you complete the development of the toolkit support set, make sure to set this attribute to **false**.
- 2** Deploy the toolkit support set on a QuickTest computer by copying the files of the support set to the correct locations in the QuickTest installation folder. For more information, see “Deploying the Toolkit Support Set” on page 101.
- 3** Open QuickTest. Ensure that the environment name that you defined for the toolkit support set is displayed in the Add-in Manager dialog box as a child of the Web Add-in. (If the Add-in Manager dialog box does not open when you open QuickTest, see the *HP QuickTest Professional Add-ins Guide* for instructions.)
- 4** Select the check box for your environment (the Web Add-in is then selected automatically) and click **OK** to load the support for your toolkit.
- 5** Open an application with your custom controls.

- 6 At this point QuickTest can already recognize and learn your controls, and you can create test steps with your custom test objects.



- a Use the Object Spy to view the test object properties and test object methods that are supported for your controls.
- For each test object class that you defined, the Object Spy displays all of the identification properties that you defined in the test object configuration file. New identification properties are displayed without values because you have not yet implemented methods to retrieve the values from the controls. For identification properties that have the same names as base test object class properties, QuickTest uses the base class implementation to retrieve the property values if the root Web element of the control matches the base test object class. For more information, see “Implementing Support for Identification Properties” on page 92.
  - The Object Spy displays all of the test object methods available for each test object class that you defined to represent your controls. This includes test object methods inherited from the base test object class, as well as the test object methods that you defined in the test object configuration file.



- b Use the **Add Objects to Local** button in the Object Repository dialog box to learn your controls. Ensure that the correct icon is used to represent the test object in the object repository.
- c In the Keyword View, create a test step with a test object from a class that you defined.
- If you defined a default operation for this class, it is displayed in the **Operation** column after you select the test object in the **Item** column.
  - The list of available operations in the **Operation** column reflects the definitions in the test object configuration file, and also includes operations inherited from the base test object class.
  - After you choose an operation, the **Value** cell is partitioned according to the number of arguments of the selected operation, and if you defined possible values for the operation (in the ListOfValues element), they are displayed in a list.

- The descriptions and documentation strings you defined for test object methods in the test object configuration file are displayed in tooltips and in the Documentation column, respectively.
- d** In the Expert View, create a test step with a test object from a class that you defined. Intellisense displays all of the operations available for the test object, and possible input values for these operations, if relevant, based on the definitions in the test object configuration file. (Inherited test object methods are also displayed.)
- e** In the Step Generator, create a test step with a test object from a class that you defined. The operations that you defined in the test object configuration file are displayed in the Operation list, and the descriptions you defined for the operations are displayed as tooltips. (Inherited test object methods are also displayed.)

For more information on working with these options in QuickTest, see the *HP QuickTest Professional User's Guide*.

**To test your toolkit support set after developing support for additional QuickTest functionality:**

- 1** Follow steps 1 to 5 in the previous procedure, to deploy the toolkit support set, open QuickTest, load the support and run an application with controls from your environment.
- 2** Depending on the QuickTest functionality for which you are developing support, perform the relevant QuickTest operations on the application to test that support. For example, learn controls in the application, run a test on the application, record test steps on the application and so on.

## Logging and Debugging the Custom Support

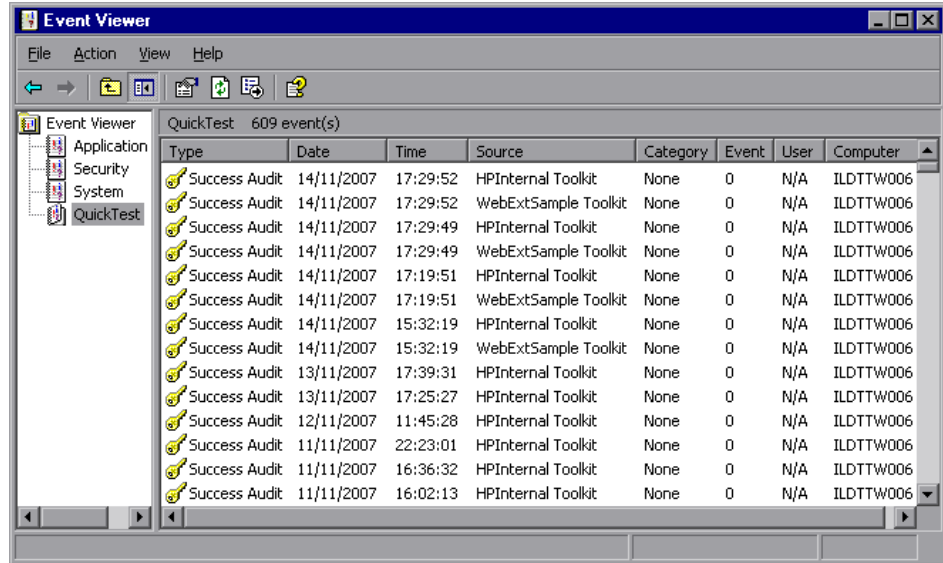
When you design the JavaScript functions for your toolkit support set, it is recommended to include writing messages to the Windows Event Viewer, to assist in debugging any problems that may arise.

Use the `_util.LogLine` method to send messages to the Event Viewer. For more information, see the *QuickTest Web Add-in Extensibility API Reference* (available with the Web Add-in Extensibility SDK online Help).

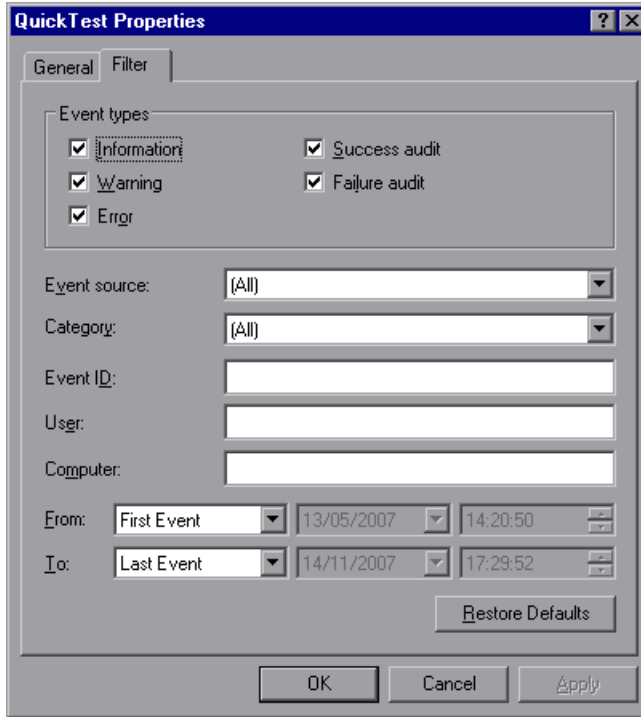
You provide the message text and its level of severity, and QuickTest adds the toolkit name and a time and date stamp and writes the messages to the Event Viewer.

In addition, while recognizing objects supported by Web Add-in Extensibility and performing tests on them, QuickTest also writes log and error messages to the Event Viewer.

To view the messages and analyze the performance of your toolkit support set, open the Event Viewer (in Windows XP and Windows 2000, select **Start > Settings > Control Panel > Administrative Tools > Computer Management**, expand the **Event Viewer** node in the **Computer Management** tree) and select the **QuickTest** node. Double-click a specific message to see its text.



You can filter the messages displayed in the Event Viewer according to severity and other message fields. In the Computer Management toolbar, select **View > Filter**. For more information, see the Event Viewer Help (select **Action > Help** in the Event Viewer).



## Implementing Support for Test Object Methods

After enabling QuickTest to recognize the custom controls, you must provide support for running test object methods. If you try to run a test with steps that run on custom test objects before providing implementation for these methods, the test fails and a run-time error occurs.

For each test object method that you defined in the test object configuration file, you must write a JavaScript function that QuickTest runs to perform the step on the control. In addition to performing the step, you can design the JavaScript function to add a line to the test results report, send log messages to the Event Viewer, and display messages boxes to the QuickTest user, as necessary. For more information, see “Designing JavaScript Functions for Your Toolkit Support Set” on page 73.

In the toolkit configuration file, you need to specify the JavaScript file in which QuickTest should look for the JavaScript functions and, optionally, the name of the function to use for each test object method.

You can specify a JavaScript file and function for each test object method in the toolkit configuration file, or you can define a default JavaScript file per toolkit (**Controls** element) or per test object class (**Control** element). QuickTest uses the default files for all test objects methods for which you do not specify an implementation file. By default, QuickTest searches in the specified file for a JavaScript function with the same name as the test object method. Therefore, you do not need to specify function names in the toolkit configuration file, unless you choose to name a function something other than the corresponding test object method name. For more information, see the Toolkit Configuration Schema Help, available in the QuickTest Professional Web Add-in Extensibility online Help.

---

**Important:** Do not create JavaScript functions named **get\_property\_values** or **get\_list\_of\_values**. These names are reserved for the JavaScript functions that QuickTest calls (by default) to retrieve run-time values of test object identification properties and lists of possible values for test object method arguments.

---

After you create support for running test object methods, you can run QuickTest tests on your custom test objects, and verify that your toolkit support set performs correctly. For more information on testing your toolkit support set, see “Testing the Toolkit Support Set During Development” on page 81.

The following example is taken from the ASPAjax toolkit support set, which includes support for a **Select** method on the ASPAjaxTabs test object. In the ASPAjax test object configuration file, this is declared as follows:

```
<ClassInfo BaseClassInfoName="WebElement"
  DefaultOperationName="Select"
  Name="ASPAjaxTabs">
  <TypeInfo>
    <Operation ExposureLevel="CommonUsed" Name="Select"
      PropertyType="Method">
      <Description>Selects the specified tab.</Description>
      <Documentation>
        <![CDATA[Select the tab with index %a1.]]>
      </Documentation>
      <Argument Name="Index" IsMandatory="true" Direction="In">
        <Type VariantType="Integer"/>
        <Description>The index value of the tab to select.</Description>
      </Argument>
    </Operation>
  </TypeInfo>
</ClassInfo>
```

In the toolkit configuration file, the **Control\Settings** element for the ASPAjaxTabs test object class is defined as follows:

```
<Control TestObjectClass="ASPAjaxTabs">
  <Settings>
    <!-- Indicates the location of the JavaScript file that contains the
      implementation of the script -->
    <Variable name="default_imp_file" value="Tabs.js"/>
  </Settings>
</Control>
```

No **Run** element is defined for this test object class. Therefore, when QuickTest runs a step with the **Select** test object method, QuickTest searches in the **Tabs.js** file (as defined in the toolkit configuration file) for a JavaScript function named **Select**.

In the **Tabs.js** file, the **Select** JavaScript function is implemented to accept an index and select the tab with that index.



## Supporting Dynamic Lists of Values for Method Arguments

When a QuickTest user creates a test step with a test object method, QuickTest can display a set of predefined possible values available for the arguments of that method. For example, if an argument is a Boolean argument, QuickTest can display **true** and **false** as the possible values, or, for a **month** argument, QuickTest can display a list of names of all the months. However, sometimes, a limited set of possible values for an argument exists, but depends on the specific object on which the step is performed. For example:

- ▶ The values that are actually relevant for the Integer **row** and **column** arguments of the function **Table(<table\_name>).SetCellData (row, column)** are limited to the number of rows and columns in the specific table.
- ▶ The relevant values for the String **path** argument of the function **Tree(<tree\_name>).Select (path)** are limited to the paths that exist in the specific tree.

Using extensibility, you can enable QuickTest to dynamically provide a list of values for arguments of test object methods.

### To support a dynamic list of values:

- 1** In the test object configuration file, set the **DynamicListOfValues** attribute the **Argument** element to **true**.
- 2** In the toolkit configuration file, you can specify the file name and function name of the JavaScript function that QuickTest must call to retrieve the list of values. By default, QuickTest requests the list of values by calling the **get\_list\_of\_values** JavaScript function from the default implementation file that you specify for the test object class in the **default\_imp\_file** variable in the **Control\Settings** element. For more information, see the Toolkit Configuration Schema Help, available in the QuickTest Professional Web Add-in Extensibility online Help.

QuickTest calls the JavaScript function for every argument whose **DynamicListOfValues** attribute is set to **true** in the test object configuration file. The parameters provided to this function indicate the test object method and argument for which the values are being requested.

- 3 Write a JavaScript function that accepts the names of the test object method and argument and returns a list of values relevant for the specified argument on the current element. Return the string values concatenated to one string, each value enveloped in quotation marks.

---

**Note:** The dynamic list of values is retrieved from the control in the application being tested. Therefore, in order to display the dynamic list of values, the relevant control must be visible in the application when the test is edited.

---

For example, in the toolkit support set for the WebExtSample environment, located in **<Web Add-in Extensibility SDK installation folder>\samples\WebExtSample** folder, a dynamic list of values is supported for the **AuthorName** argument in the **GoToAuthorPage** test object method of the test object class WebExtBook.

- In the **WebExtSampleTestObjects.xml** test object configuration file, the argument is defined as follows:

```
<Operation Name="GoToAuthorPage" PropertyType="Method">
  <Description>Opens the Web page for the specified author.</Description>
  <Argument Name="AuthorName" IsMandatory="true" Direction="In"
    DynamicListOfValues="true">
    <Type VariantType="String"/>
    <Description>The author.</Description>
  </Argument>
</Operation>
```

In the **WebExtBook.js** file (defined as the default implementation file for the WebExtBook test object class in the **WebExtSample.xml** toolkit configuration file) the following JavaScript functions are designed to return a list of the book's authors, each enveloped in quotation marks:

```
// Dynamic list of values implementation
// ~~~~~
function get_list_of_values( method, argIndex )
{
    // When creating a step with the GoToAuthorPage test object method,
    // provide a list of the authors of this book, that can be used for the method's
    // argument.
    if (method == "GoToAuthorPage")
    {
        return get_GoToAuthorPage_list_of_values(argIndex);
    }

    return null;
}

function get_GoToAuthorPage_list_of_values(argIndex)
{
    var arr = new Array();
    if( argIndex > 1 )
        return toSafeArray(arr);

    // Retrieve all authors
    var AuthorsCount = 0;
    for( var i = 0 ; i < _elem.rows[1].cells[0].children.length ; ++i )
    {
        if( _elem.rows[1].cells[0].children[i].tagName == "A" )
        {
            arr[AuthorsCount]="\""+_elem.rows[1].cells[0].children[i].innerText+"\"";
            AuthorsCount++;
        }
    }
    return toSafeArray(arr);
}
```

## Implementing Support for Identification Properties

In the test object configuration file you defined the identification properties for your test object classes. When QuickTest runs a test it needs to retrieve the values for these properties. QuickTest uses identification property run-time values in different test object methods, such as **GetROProperty**. Identification property run-time values are also required for different basic capabilities, such as creating checkpoints and outputting values.

To support retrieving the run-time values of identification properties, you need to implement a JavaScript function that accepts a **PropertyName** parameter and returns the value of any property QuickTest requests. For more information on writing JavaScript functions for Web Add-in Extensibility, see “Designing JavaScript Functions for Your Toolkit Support Set” on page 73.

QuickTest uses the base test object class implementation to retrieve the identification property values when the following conditions are met:

- ▶ The control includes a base element (for more information, see “Extending an Existing Test Object Class” on page 66).
- ▶ The identification property is defined in the test object configuration file with the same name as a base test object class property.
- ▶ You do not provide a function that returns a value for that identification property.

Implement your JavaScript function to return a value for the identification properties defined in the test object configuration file in the following situations:

- ▶ Base test object class implementation for retrieving the value for this identification property value is not available.
- ▶ The base test object class implementation does not meet your needs.

By designing the function that returns identification property values to return a value for the **logical\_name** property, you can control how QuickTest names test objects of this test object class. For more information, see “Customizing the Test Object Name” on page 93.

In the toolkit configuration file, you can specify the JavaScript file in which you implemented the JavaScript function that retrieves property values. You can also specify the name of the function that you implemented for this purpose (in the **Control\Run\Properties** element). However, if you do not specify a function name, QuickTest calls **get\_property\_value** (*PropertyName*) and this is the function that you must implement. If you do not specify a file name, QuickTest calls the function from the default JavaScript file you specified in the **Control\Settings** element (at the test object class level) or in the **Controls\Settings** element (at the toolkit level). For more information, see the Toolkit Configuration Schema Help, available in the QuickTest Professional Web Add-in Extensibility online Help.

After you create support for retrieving the run-time values of identification properties, you can test that your toolkit support set correctly enables QuickTest to run checkpoints on your Web elements, display the property values in the Object Spy, and run test steps with the **GetROProperty** operation. For more information on testing your toolkit support set, see “Testing the Toolkit Support Set During Development” on page 81.

## Customizing the Test Object Name

When QuickTest learns an object, it creates a unique name for each test object on the page. A descriptive test object name enables you distinguish between test objects of the same class and makes it easier to identify them in your object repository and in tests.

By default, a test object is given the name of its test object class (appended with an index if there is more than one test object of the same class on the page). In many cases, this is not the ideal name for the custom control.

The test object name needs to be meaningful to the QuickTest user, preferably using terminology that is relevant to your toolkit. QuickTest displays this name in the Keyword View, in the Expert View, and in the object repository. The test object name is not used for object identification and therefore does not have to remain constant in the application.

For example, the test object name can be language-dependent. The QuickTest user can create a test with the application running in one language, creating test objects with names in that language. The user can then run the test on the same application in another language. The names of test objects in the test remain in the original language, but QuickTest can correctly recognize the test objects and perform operations on them, based on their description.

To control how QuickTest names test objects of a test object class, design the function that returns identification property values to return a value for the **logical\_name** property. QuickTest uses this value as the test object name.

For example, **WebExtBook** test objects in the WebExtSample environment are named based on their book title. The sample toolkit support set for the WebExtSample environment is located in <**Web Add-in Extensibility SDK installation folder**>\samples\WebExtSample folder. The **WebExtBook.js** file is defined as the default implementation file in the **WebExtSample.xml** toolkit configuration file. The JavaScript function for returning identification property run-time values is defined in the **WebExtBook.js** file as follows:

```
function get_property_value(prop)
{
    if ( prop == "logical_name" || prop == "title" )
        // For the "title" identification property, as well as the "logical_name"
        // property, return the inner text of the second cell in the first row.
        {
            return _elem.rows[0].cells[1].innerText;
        }
}
```

## Implementing a Filter for Learning Child Controls

When you instruct QuickTest to learn a Web page, the Define Object Filter dialog box opens, enabling you to determine which of the Web page's descendants should be learned with it. When you select **All object types**, instructing QuickTest to learn the custom control with its parent Web page, all of the controls contained within your custom control are also learned as children of that Web page (and siblings of the control itself).

In some situations, there is no need to create test objects for all of the children of a control. For example, when there are no significant operations to perform on the children and no properties to retrieve, or when, for testing purposes, operations performed on the children are viewed as operations performed on the parent control. For example, on a calculator control that contains button controls, there is no need to create test objects for the digit buttons. Pressing the digit buttons performs a **Set** operation on the calculator object itself, providing a numeric input for a calculator operation.

You can determine which controls QuickTest learns by defining a Learn Filter for the test object class you create. You can use the **Control\Filter\Learn** element in the toolkit configuration file to define basic filtering, or you can implement complex filters by writing a JavaScript function. If you design a filter using a JavaScript function, specify the location and name of the function in the toolkit configuration file.

In the toolkit configuration file, in the **Control\Filter\Learn** element, you can define:

- ▶ Whether to learn controls represented by this test object class. You can also specify that QuickTest should learn controls of this type only if they have children.
- ▶ Whether to learn the controls contained within the controls represented by this test object class. You can also specify that your JavaScript function needs to be called to determine which descendants to learn.

If you write a JavaScript function to implement the filter, the function must return a SafeArray containing all of the descendant Web elements that you want QuickTest to learn. For more information, see “Designing JavaScript Functions for Your Toolkit Support Set” on page 73.

For more information, see the Toolkit Configuration Schema Help, available in the QuickTest Professional Web Add-in Extensibility online Help.

You can see an example of defining Learn Filters in the sample toolkit support set for the WebExtSample environment located in <Web Add-in Extensibility SDK installation folder>\samples\WebExtSample folder.

- The **Filter** element for the **WebExtBook** test object class is defined (in the **WebExtSample.xml** file) as follows:

```
<Filter>
  <Learn learn_control="Yes" learn_children="No"/>
</Filter>
```

This instructs QuickTest to learn **WebExtBook** test objects without their descendants.

- The **Filter** element for the **WebExtUsedBooks** test object class is defined as follows:

```
<Filter>
  <Learn learn_control="Yes" learn_children="CallFilterFunc"
    type="javascript" function="GetChildrenToLearn" />
</Filter>
```

This instructs QuickTest to learn **WebExtUsedBooks** test objects, and to call the **CallFilterFunc** JavaScript function to determine which descendants to learn.

The **GetChildrenToLearn** JavaScript function is located in the **WebExtUsedBooks.js** file, which is defined as the default implementation file in the **WebExtSample.xml** toolkit configuration file. The **GetChildrenToLearn** JavaScript function returns all of the radio button descendants of the used books table control:

```
function GetChildrenToLearn()
{ // Return all of the radio buttons in the used books table
  return toArray( _elem.children[0].getElementsByTagName("input") );
}
```



After you implement a Learn Filter, you can instruct QuickTest to learn your custom controls, and verify that your toolkit support set correctly controls which of the controls' children are learned. For more information on testing your toolkit support set, see “Testing the Toolkit Support Set During Development” on page 81.

## Implementing Support for Recording

One way to add objects to the object repository and create tests in QuickTest is by recording. To record a test, QuickTest registers to listen to events on the Web elements, and, when an event occurs, QuickTest adds the relevant step to the test. By default, QuickTest uses the standard Web event configuration to determine the events to which to listen for each Web element, and the steps to record in the test when each event occurs.

If you want to customize recording on a test object class that you defined, you must specify the events that you want to record and the steps that you want QuickTest to add to the test when those events occur.

For each test object class on which you want to customize recording, define a **Control\Record\EventListening** element in the test object configuration file. In this element you can specify whether to use standard Web event configuration to handle events on controls represented by this test object class. In addition, you can specify whether to use standard Web event configuration to handle events that take place on those controls' children.

In addition to specifying whether QuickTest should use standard Web event configuration, you can specify a JavaScript function that provides more specific event registration (and optionally, the name of the file containing the function). For more information, see the Toolkit Configuration Schema Help, available in the QuickTest Professional Web Add-in Extensibility online Help.

In addition to the definitions in the toolkit configuration file, you write the following types of JavaScript functions:

- ▶ One JavaScript function that uses the **RegisterForEvent** function in the **\_util** utility object to register for listening to the correct events on the correct elements. The arguments of this function also determine what JavaScript functions QuickTest calls when each event occurs.

QuickTest calls this function after registering to listen to events according to the standard Web event configuration. The event registration performed by this function overrides any previous registrations for the same events. For events not handled by this function the standard registration is used.

- ▶ One or more JavaScript functions that handle the events, when they occur, by calling the **Record** function in the **\_util** utility object to inform QuickTest what step to add to the test.

---

**Note:** The **Record** function, and other utility object functions, require a **SafeArray** type argument. To convert an array to a **SafeArray**, you can use the *toSafeArray (array)* function that Web Add-in Extensibility provides. This function is defined in **<Web Add-in Extensibility installation folder>\dat\Extensibility\Web\Toolkits\common.js** (also located in the **<QuickTest installation folder>\dat\Extensibility\Web\Toolkits folder**).

---

For information on the syntax of the utility object functions, see the *QuickTest Web Add-in Extensibility API Reference* (available with the Web Add-in Extensibility SDK online Help). For more information on writing JavaScript functions for Web Add-in Extensibility, see “Designing JavaScript Functions for Your Toolkit Support Set” on page 73.

You can see an example of customized recording in the sample toolkit support set for the WebExtSample environment located in **<Web Add-in Extensibility SDK installation folder>\samples\WebExtSample** folder.

- In the toolkit configuration file, within the **Control** element for the **WebExtBook** test object class, the following **Record\EventListenering** element is defined:

```
<Record>
  <EventListenering
    use_default_event_handling_for_children="false"
    use_default_event_handling="false"
    type="javascript" function="ListenToEvents"/>
</Record>
```

This instructs QuickTest not to use the default Web Event Configuration for handling events on the Book control and its children, but to call the JavaScript function **ListenToEvents**. A JavaScript file is not defined, therefore QuickTest looks for the JavaScript function in the **WebExtBook.js** file that is specified at the **Control** level for the WebExtBook test object class.

- In the **WebExtBook.js** file, the following **ListenToEvents** function is defined:

```
function ListenToEvents( elem )
{
  // Connect to the "Select" event: When the book name or the book icon is
  // clicked, call OnSelectClicked.
  _util.RegisterForEvent( _elem.rows[0].cells[0].children[0], "onclick" ,
    "OnSelectClicked" );
  _util.RegisterForEvent( _elem.rows[0].cells[1].children[0], "onclick" ,
    "OnSelectClicked" );
}
```

This function registers QuickTest to listen to click events on the book's title and image. When registering for an event, this function specifies what JavaScript function QuickTest must call when the event occurs.

- In the **WebExtBook.js** file add the following event handler JavaScript functions:

```
function OnSelectClicked( handlerParam , eventObj )
{
    // Record the "Select" step
    var arr = new Array();
    _util.Record( "Select", toSafeArray(arr) , 0 );
    return true;
}
```

This function records the **Select** test object method on the WebExtBook test object when the book title or image is clicked.

After you implement support for recording, you can record a test on controls in your environment, and verify that your toolkit support set performs correctly. For more information on testing your toolkit support set, see “Testing the Toolkit Support Set During Development” on page 81.

# 5

---

## Deploying the Toolkit Support Set

The final stage of extending QuickTest support for a custom toolkit is deploying the toolkit support set. This means placing all of the files you created in the correct locations on a computer with QuickTest installed, enabling QuickTest to recognize the controls in the toolkit and run tests on them.

While you are developing the toolkit support set, deploying it to QuickTest enables you to test and debug the support that you create. After the toolkit support set is complete, you can deploy it on any computer with QuickTest installed, to serve as a QuickTest add-in.

### **This chapter includes:**

- About Deploying the Custom Toolkit Support on page 101
- Deploying the Custom Toolkit Support on page 102
- Removing Deployed Support on page 103

## About Deploying the Custom Toolkit Support

From the QuickTest user's perspective, after you deploy the toolkit support set on a computer on which QuickTest is installed, the toolkit support set can be used as a QuickTest add-in.

When QuickTest opens, it displays the environment names of all deployed Web Add-in Extensibility toolkit support sets in the Add-in Manager, as child nodes beneath the Web Add-in. The QuickTest user can select an environment, instructing QuickTest to load support for that environment. For more information on the Add-in Manager dialog box, see the *HP QuickTest Professional Add-ins Guide*.

## Deploying the Custom Toolkit Support

To deploy the toolkit support set that you create, you must place the files in specific locations within the QuickTest installation folder. The following table describes the appropriate location for each of the toolkit support files:

File Name	Location
<b>&lt;Custom Toolkit Name&gt;TestObjects.xml</b>  <b>Note:</b> This is the recommended file name convention. You can have more than one test object configuration XML file, and name them as you wish.	<ul style="list-style-type: none"> <li>▶ &lt;QuickTest Installation Folder&gt;\dat\Extensibility\Web</li> <li>▶ &lt;QuickTest Add-in for Quality Center Installation Folder&gt;\dat\Extensibility\Web (Optional. Required only if QuickTest Add-in for Quality Center is installed)</li> </ul>
<b>&lt;Custom Toolkit Name&gt;.xml</b>	<QuickTest Installation Folder>\dat\Extensibility\Web\Toolkits\<custom toolkit name>
<b>JavaScript files</b>	<QuickTest Installation Folder>\dat\Extensibility\Web\Toolkits\<custom toolkit name>
<b>Icon files for new test object classes</b> (optional)	Must be an uncompressed <b>.ico</b> format file, located on the computer on which QuickTest is installed, or in an accessible network location.  Specify the location in <Custom Toolkit Name>TestObjects.xml
<b>Help files for the test object classes</b> (optional)	Must be a <b>.chm</b> file, located on the computer on which QuickTest is installed, or in an accessible network location.  Specify the location in <Custom Toolkit Name>TestObjects.xml

---

**Note:**

The recommended location for the toolkit support set icon files is **<QuickTest Installation Folder>\dat\Extensibility\Web\Toolkits\<custom toolkit name>\res.**

The recommended location for the toolkit support set Help files is **<QuickTest Installation Folder>\dat\Extensibility\Web\Toolkits\<custom toolkit name>\help.**

In the test object configuration file, you can specify these locations using relative paths. For more information, see the *QuickTest Test Object Schema Help* (available with the Web Add-in Extensibility SDK online Help).

---

If you modify a deployed toolkit support set, you must reopen QuickTest and re-run the Web application for the changes to take effect.

## Removing Deployed Support

When opening QuickTest, the QuickTest user can use the Add-in Manager to instruct QuickTest whether to load the support provided for any particular environment or toolkit.

If you want to remove support for a custom toolkit from QuickTest after it is deployed, you must delete its toolkit configuration file from:

**<QuickTest Installation Folder>\dat\Extensibility\Web\Toolkits\  
<custom toolkit name>**

If none of the test object class definitions in a test object configuration file are used to represent any custom controls (meaning they are no longer needed), you can delete the file from:

**<QuickTest Installation Folder>\dat\Extensibility\Web** (and **<QuickTest Add-in for Quality Center Installation Folder>\dat\Extensibility\Web** if relevant).





# Part II

---

## **Tutorial: Learning to Create Web Custom Toolkit Support**



# 1

---

## Learning to Create QuickTest Support for a Simple Custom Web Control

In this lesson you create support for the Book control in the Web Add-in Extensibility Book Sample toolkit. Creating support for the Book control requires only minimal customization, allowing you to learn the basics of creating a toolkit support set.

The <QuickTest Professional Web Add-in Extensibility SDK installation folder>\samples\WebExtSample\Toolkit Support Set folder contains a complete toolkit support set for this sample to which you can refer while you perform this lesson.

Before you perform this lesson, ensure that you have read Chapter 1, “Introducing QuickTest Professional Web Add-in Extensibility.”

### **This chapter includes:**

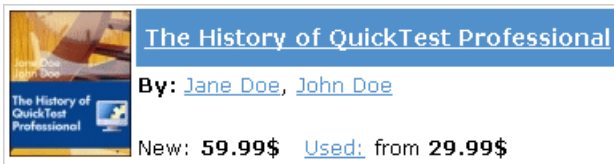
- Preparing for This Lesson on page 108
- Planning Support for the Web Add-in Extensibility Book Sample Toolkit on page 109
- Developing the Toolkit Support Set on page 118
- Lesson Summary on page 145

## Preparing for This Lesson

Before you extend QuickTest support for a custom control, you must have access to its source file. You do not need to modify any of the custom control's sources to support it in QuickTest, but you do need to be familiar with them. Make sure you know what elements and attributes comprise the control, the events that might occur on this control, and so on. You use this information when you design the support class.

The source file for the Book control is located in `<QuickTest Professional Web Add-in Extensibility SDK installation folder>\samples\WebExtSample\Application\Book.htm`.

You can run the control from **Start > Programs > QuickTest Professional > Extensibility > Samples > Web Add-in Extensibility Book Sample**.



Run the control, open the source file for it and study the control's behavior and implementation.

The Book control contains information including the title of the book, its authors, the price for a new copy of the book, and the lowest price for which a used copy can be purchased.

Clicking on the title or the image of the book opens a page that can display more details about the book (but is not implemented in this sample). Clicking on an author name opens a page that can provide a list of books by the same author (but is not implemented in this sample). Clicking on **Used** opens a Used Books page, listing all of the available used copies of the book, and their prices. The UsedBooks table is a more complex control that you will learn to support in the lesson, "Learning to Create QuickTest Support for a Complex Custom Web Control" on page 147.

## Planning Support for the Web Add-in Extensibility Book Sample Toolkit

In this section, you analyze how QuickTest currently recognizes the Book control versus the way it should recognize it, based on your knowledge of the control. Next, you determine the answers to the questions in the “Understanding the Web Add-in Extensibility Planning Checklist” on page 54, and fill in the “Web Add-in Extensibility Planning Checklist” on page 116, accordingly.

The best way to do this is to analyze how QuickTest recognizes the Book control on the one hand, using the Object Spy, Keyword View, and Record option, and on the other hand, to consider how the control is implemented and the purposes for which it is used.

### 1 Open QuickTest and Run the Book control.

Open QuickTest and load the Web Add-in.

Close any open instances of the Book control and open it from **Start > Programs > QuickTest Professional > Extensibility > Samples > Web Add-in Extensibility Book Sample**.

### 2 Use the Object Spy to view the Book properties and methods.

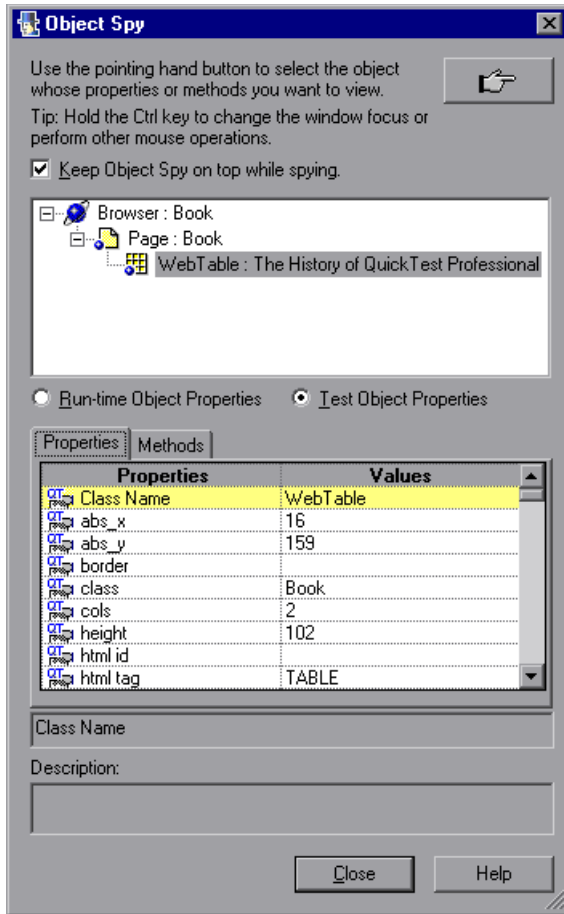


In QuickTest, choose **Tools > Object Spy** or click the **Object Spy** toolbar button to open the Object Spy dialog box. Click the **Properties** tab and select **Test Object Properties**.



In the Object Spy dialog box, click the pointing hand, then click the Book control.

The Book control is implemented as a Web table, for which QuickTest support is built in, therefore it recognizes the control as a **WebTable**, named according to the title of the book. The icon used for the test object is the standard WebTable class icon.



Close the Object Spy.

### 3 Record operations on the Book control.

In QuickTest, choose **Automation > Record and Run Settings** to open the Record and Run Settings dialog box. In the Web tab, select **Record and run test on any open browser**. Click **OK**.

## Lesson 1 • Learning to Create QuickTest Support for a Simple Custom Web Control

Click the **Record** button or choose **Automation > Record**. Click on different links in the Book control (you must return to the previous page after each click, to return to the Book control): the book title, the image in the control, an author name, and the **Used** link.

With each click, a new step is added to the test:

Item	Operation	Value	Documentation
▼ Action1			
▼ Book			
▼ Book			
The History of QuickTest	Click		Click the "The History of QuickTest" link.
Not Implemented	Sync		Wait for the Web page to synchronize before continuing the run.
▼ Book	Back		Navigate back to the previous page of the browser.
▼ Book			
Book	Click		Click the "Book" image.
Not Implemented	Sync		Wait for the Web page to synchronize before continuing the run.
▼ Book	Back		Navigate back to the previous page of the browser.
▼ Book			
Jane Doe	Click		Click the "Jane Doe" link.
Not Implemented_2	Sync		Wait for the Web page to synchronize before continuing the run.
▼ Book	Back		Navigate back to the previous page of the browser.
▼ Book			
Used:	Click		Click the "Used:" link.

Click the **Stop** button or choose **Automation > Stop** to end the recording session.

Only simple **Click** steps are recorded, each attributed to a different object defined within the book control. **Click** operations are recorded independently on Web Link test objects with different names, or on the Book image test object. These steps are not helpfully meaningful in the context of this control.

### 4 Determine the custom toolkit to which the Book control belongs.

When you extend QuickTest support for a control you always do so in the context of a toolkit. For the purpose of this tutorial, two custom Web controls are grouped to form the custom toolkit named WebExtSample: Book and UsedBooksTable.

In this lesson you create support for the WebExtSample toolkit, initially supporting only the Book control.

**5 Complete the custom class support planning checklist.**

The Book control is implemented as Web table, as follows:

```

<table class="Book">
  <tr>
    <td class="BookImageCell" rowspan="4">
      <a href=".\\QtpHistory.htm">
        
      </a>
    </td>
    <td class="BookCell">
      <a class="BookTitle" href=".\\QtpHistory.htm" >
        The History of QuickTest Professional</a>
    </td>
  </tr>
  <tr>
    <td class="BookCell">
      By: <a href=".\\JaneDoe.htm">Jane Doe</a>,
        <a href=".\\JohnDoe.htm">John Doe</a>
    </td>
  </tr>
  <tr>
    <td class="BookCell">
    </td>
  </tr>
  <tr>
    <td class="BookCell">
      New: <strong>59.99$</strong> &nbsp;
      <a href=".\\UsedBooks.htm">Used:</a> from <strong>29.99$</strong>
    </td>
  </tr>
</table>

```



This section describes the required support for the Book control, and then summarizes the information in the support planning checklist.

**a** Choosing the test object class that represents the custom control:

The Book control is implemented as a Web table control to assist in its appearance. For the purpose of performing tests on this control, there is no need to for QuickTest to recognize the Book control as a table. On the other hand, the basic support that QuickTest provides a generic Web element, using the WebElement object, is not specific enough for the Book control. Therefore, you create a new test object class named **WebExtBook**, which extends **WebElement**, and teach QuickTest to identify this test object class as the one that represents the Book control.

**b** Defining how QuickTest will identify which test object class to use to represent the control:

If the control's **tagName** property is **table** and its **className** property is **Book**, use a **WebExtBook** test object to represent the control.

**c** Deciding the details for the new test object class:

► The new test object class is represented by the icon file:

**<QuickTest installation folder>\Dat\Extensibility\Web\Toolkits\  
WebExtSample\res\WebBook.ico**

► No Help file is provided.

► The new identification properties to support are: title, authors, price, and min\_used\_price. They should all be displayed (and selected by default) in the QuickTest Checkpoint Properties dialog box, none are used for Smart Identification.

The identification properties that uniquely define the object are the book's title and the names of its authors.

► The name of the test object itself should be the same as its title identification property.

- ▶ The custom support should include support for the following test object methods:
  - ▶ **Select.** Simulates clicking the book's title or image. This is the default test object method.
  - ▶ **GoToAuthorPage.** Simulates clicking the specified author name (the available author names should be retrieved from the specific control during run-time).
  - ▶ **GoToUsedBooksPage.** Simulates clicking the **Used** link.
- ▶ To support a dynamic list of values, you must modify the toolkit configuration file (to specify the JavaScript function that provides the values) and design the relevant JavaScript functions.

**d** Defining which of the control's children QuickTest should learn when learning the control:

For testing purposes, QuickTest should relate to all operations as though they are carried out on the Book control itself, even if they are technically performed on controls within it. Therefore, none of the control's children need to be learned and represented by test objects.

**e** Deciding whether the Object Spy should display **WebExtBook** test objects: Yes.

**f** Defining whether to support recording, and what events to record:

Listen to mouse clicks that occur on the following elements in the control: title, image, authors, and Used. When a click occurs on one of these elements, record the relevant step in the test.

**g** Deciding what parts of the support need to be designed in the toolkit configuration file and what parts need JavaScript functions:

- ▶ For the simple Book control, test object class identification is based simply on html property values and can therefore be supported using the toolkit configuration file without JavaScript functions.
- ▶ Test object methods and identification properties can be supported by JavaScript functions using the default naming convention, therefore no changes are required in the toolkit configuration file.

- Instructing QuickTest not to learn the control's children can be designed in the toolkit configuration file and does not require JavaScript functions.
- To support recording, you modify the toolkit configuration file to turn off the default Web Event Configuration and specify the JavaScript function that registers QuickTest to listen to the correct event. In addition, design one JavaScript function that handles event registration, and additional JavaScript functions that instruct QuickTest to record the relevant steps when the events occur.

Below, you can see the checklist, completed based on the information above.

## Web Add-in Extensibility Planning Checklist

<input checked="" type="checkbox"/>	Custom Control Support Planning Checklist	Specify in Toolkit XML?	Support by JavaScript function?
<input type="checkbox"/>	The sources for this custom control are located in: <QuickTest Professional Web Add-in Extensibility SDK installation folder>\samples\WebExtSample\Application\Book.htm	n/a	n/a
<input type="checkbox"/>	Specify the Web test object base class that the new test object class extends: (Default—WebElement) WebElement	n/a	n/a
<input type="checkbox"/>	Is the base test object class WebElement? Yes If No, is there a base element (an element that matches the base test object class)?n/a If there is a base element, do you need a JavaScript function to return it? n/a	No	No
<input type="checkbox"/>	Specify the New Web test object class details: <ul style="list-style-type: none"> <li>➤ Test object class name:WebExtBook</li> <li>➤ Icon file location (optional):            &lt;QuickTest installation folder&gt;\Dat\Extensibility\Web\Toolkits\WebExtSample\res\WebBook.ico</li> <li>➤ Identification properties for description:title, authors</li> <li>➤ Default test object method:Select</li> <li>➤ Help file location: n/a</li> </ul>	n/a	n/a
<input type="checkbox"/>	Specify the basis for identifying the test object class to use for the control: tagName = table, className = Book.	Yes	No
<input type="checkbox"/>	Specify the basis for naming the test object: Use the book title	n/a	Yes
<input type="checkbox"/>	List the identification properties to support. Mark which should be available (and which selected by default) for checkpoint sand which (if any) should be used for Smart Identification: title, authors, price, min_used_price (all available for checkpoints and selected by default, none used for Smart Identification)	No	Yes

<input checked="" type="checkbox"/>	<b>Custom Control Support Planning Checklist</b>	<b>Specify in Toolkit XML?</b>	<b>Support by JavaScript function?</b>
<input type="checkbox"/>	List the test object methods to support (if required, include arguments, return values, Help file location and Help ID): Select () GoToAuthorPage (AuthorName) GoToUsedBookPage ()	No	Yes
<input type="checkbox"/>	Provide a dynamic list of values for any test object method arguments? Yes If so, list the arguments: AuthorName for GoToAuthorPage method	n/a	Yes
<input type="checkbox"/>	Specify the types of children that QuickTest should learn with the control: None	Yes	No
<input type="checkbox"/>	Display test objects of this class in the Object Spy? Yes	No	n/a
<input type="checkbox"/>	Provide support for recording? Yes If so, list the events that should trigger recording: Clicks on title, image, author names, and Used	Yes	Yes

## Developing the Toolkit Support Set

Follow the steps in this section to develop the toolkit support set for the WebExtSample toolkit and learn the basics of Web Add-in Extensibility. Developing this toolkit support set comprises the following stages:

- ▶ Stage 1: Creating the Toolkit Support Set, described on page 118
- ▶ Stage 2: Introducing the WebExtSample Environment to QuickTest, described on page 119
- ▶ Stage 3: Teaching QuickTest to Identify, Spy, and Learn the Book Control, described on page 122
- ▶ Stage 4: Implementing Support for the WebExtBook's Test Object Methods, described on page 126
- ▶ Stage 5: Implementing Support for the WebExtBook's Identification Properties, described on page 130
- ▶ Stage 6: Changing the Name of the Test Object, described on page 133
- ▶ Stage 7: Implementing a Filter to Prevent Learning Child Objects, described on page 135
- ▶ Stage 8: Implementing Support for Recording on the Book Control, described on page 137
- ▶ Stage 9: Implementing Support for Dynamic List of Values for AuthorName, described on page 142

### Stage 1: Creating the Toolkit Support Set

In this section, you create the files and folders that comprise the toolkit support set for the WebExtSample toolkit.

**To create the toolkit support set:**

- 1** Create a folder for your toolkit support set.  
You can choose any convenient name and location for this folder.
- 2** In the toolkit support set folder, create a file named **WebExtSampleTestObjects.xml**. This is the test object configuration file.
- 3** In the toolkit support set folder, create a folder named **Toolkits**.

- 4 In the **Toolkits** folder, create a folder named **WebExtSample**.
- 5 In the **Toolkits\WebExtSample** folder, create the following:
  - ▶ A file named **WebExtSample.xml** (This is the toolkit configuration file.)
  - ▶ A file named **WebExtBook.js** (This is the file for all of the JavaScript functions you design to support the Book control.)
  - ▶ A folder named **res** containing the **WebBook.ico** icon file (You can copy the icon file from <Web Add-in Extensibility installation folder>\samples\WebExtSample\Toolkit Support Set\Toolkits\WebExtSample\res.)

## Stage 2: Introducing the WebExtSample Environment to QuickTest

In this section, you introduce the WebExtSample environment to QuickTest, using the toolkit configuration file and the test object configuration file. The first layer of Web Add-in Extensibility is introducing the environment to QuickTest. The toolkit configuration file informs QuickTest of the new environment (and its name) and the test object configuration file describes the test object model that you designed for the environment.

### Designing the Toolkit Configuration File

The first role of the toolkit configuration file is informing QuickTest of the new supported environment.

To inform QuickTest that a new environment is supported, it is sufficient to create a basic toolkit configuration file, whose name is the same as the environment name. A basic toolkit configuration file must contain one **Controls** element with at least one **Control** element (describing one test object class). For more information on the elements and attributes in the toolkit configuration file, see the *QuickTest Web Add-in Extensibility Toolkit Configuration Schema Help* (available with the Web Add-in Extensibility SDK online Help).

**To inform QuickTest about the WebExtSample environment:**

Enter the following text in the **WebExtSample.xml** file that you created in “Stage 1: Creating the Toolkit Support Set” on page 118:

```
<?xml version="1.0" encoding="UTF-8"?>
<Controls>
    <Control TestObjectClass="WebExtBook"/>
</Controls>
```

After you deploy this file to the correct location on a QuickTest computer, when QuickTest opens, it displays the WebExtSample environment in the Add-in Manager, as a child node beneath the Web Add-in. If you select the check box for the WebExtSample, QuickTest loads the support that you provide for this environment.

Later in this lesson you will add additional elements within this **Control** element, providing the location of the JavaScript functions that complete the toolkit support set and information that provides support for the following QuickTest abilities:

- ▶ Identifying the test object class used to represent the control (to support the Object Spy and learning controls)
- ▶ Filtering child controls when learning the control
- ▶ Listening to events on the control to record test steps

**Designing the Test Object Configuration File**

You use the test object configuration file to introduce the WebExtSample environment and its test object model to QuickTest.

The **PackageName** attribute in the **TypeInformation** element associates this test object configuration file (and the test objects defined in it) with the WebExtSample environment. If, when QuickTest opens, you do not select the WebExtSample environment, QuickTest ignores the test object class definitions in this file.

For more information on the elements and attributes in the test object configuration file, see the *QuickTest Test Object Schema Help* (available with the Web Add-in Extensibility SDK online Help).



### To define the WebExtSample test object model in the test object configuration file:

Enter the text below in the **WebExtSampleTestObjects.xml** file that you created in “Stage 1: Creating the Toolkit Support Set” on page 118. This defines the **WebExtSample** environment and the **WebExtBook** test object class according to the details described in the “Web Add-in Extensibility Planning Checklist” on page 116.

```
<?xml version="1.0" encoding="UTF-8"?>
<TypeInfo Load="true" AddinName="Web" PackageName="WebExtSample">
<ClassInfo BaseClassInfoName="WebElement"
  DefaultOperationName="Select"
  Name="WebExtBook">
  <IconInfo IconFile=
    "INSTALLDIR\data\Extensibility\Web\Toolkits\WebExtSample\res\WebBook.ico"/>
  <TypeInfo>
    <Operation ExposureLevel="CommonUsed"
      Name="Select"
      PropertyType="Method">
      <Description>Selects the book.</Description>
      <Documentation><![CDATA[Select the %l book.]]></Documentation>
    </Operation>
    <Operation ExposureLevel="CommonUsed"
      Name="GoToAuthorPage"
      PropertyType="Method">
      <Description>Opens the Web page for the specified author.</Description>
      <Documentation><![CDATA[Open the Web page for %a1.]]></Documentation>
      <Argument Name="AuthorName"
        IsMandatory="true" Direction="In"
        DynamicListOfValues="true">
        <Type VariantType="String"/>
        <Description>The author.</Description>
      </Argument>
    </Operation>
    <Operation ExposureLevel="CommonUsed"
      Name="GoToUsedBooksPage"
      PropertyType="Method">
      <Description>Opens the used books page.</Description>
      <Documentation><![CDATA[Open the %l used books page.]]></Documentation>
    </Operation>
  </TypeInfo>
  <IdentificationProperties>
    <IdentificationProperty ForDefaultVerification="true" ForVerification="true"
      ForDescription="true" Name="title"/>
  </IdentificationProperties>
</ClassInfo>
</TypeInfo>
```

## Lesson 1 • Learning to Create QuickTest Support for a Simple Custom Web Control

```
<IdentificationProperty ForDefaultVerification="true" ForVerification="true"
  ForDescription="true" Name="authors"/>
<IdentificationProperty ForDefaultVerification="true" ForVerification="true"
  ForDescription="false" Name="price"/>
<IdentificationProperty ForDefaultVerification="true" ForVerification="true"
  ForDescription="false" Name="min_used_price"/>
</IdentificationProperties>
</ClassInfo>
</TypeInfo>
```

### Stage 3: Teaching QuickTest to Identify, Spy, and Learn the Book Control

To support a custom control, QuickTest must be able to identify which test object class should represent a given control. Therefore, the most basic element of Web Add-in Extensibility is the **Identification** element, defined within each **Control** element in the toolkit configuration file. Each **Control** element defines a test object class. The **Identification** element specifies which controls should be represented by that test object class.

When QuickTest needs to recognize a control in the application being tested, it checks the **Identification** element defined for each test object class. The first test object class whose **Identification** definition matches the control is used to represent the control.

As described in “Planning Support for the Web Add-in Extensibility Book Sample Toolkit” on page 109, any control whose **tagName** property is **table** and whose **className** property is **Book** is represented by a **WebExtBook** test object. This can be defined simply in the toolkit configuration file and does not require using JavaScript functions.

**To define the identification rules for the WebExtBook test object class:**

Replace the text in the **WebExtSample.xml** file with the following text:

```
<?xml version="1.0" encoding="UTF-8"?>
<Controls>
  <Control TestObjectClass="WebExtBook">
    <Identification>
      <Conditions type="IdentifyIfPropMatch" logic="and">
        <Condition prop_name="tagName" expected_value="TABLE"/>
        <Condition prop_name="className" expected_value="Book"/>
      </Conditions>
    </Identification>
  </Control>
</Controls>
```

This adds an **Identification** element to the **Control** element that defines the **WebExtBook** test object class. The **Identification** element includes one **Conditions** element that contains two conditions, both of which must be met for the control to qualify as a **WebExtBook**. The **Condition** elements within the **Conditions** element specify one condition each. In each condition, the value of the specified HTML property of the control must match (case-insensitive compare) the specified expected value.

For more information on defining the **Identification** element for a test object class, see “Teaching QuickTest to Identify the Test Object Class to Use for a Custom Web Control” on page 75 and the *QuickTest Web Add-in Extensibility Toolkit Configuration Schema Help* (available with the Web Add-in Extensibility SDK online Help).

## Deploying and Testing the Toolkit Support Set

After defining the **WebExtBook** test object class in the test object configuration file and the identification rules for this test object class in the toolkit configuration file, you can already test the effect of using the toolkit support set with QuickTest.

To deploy the toolkit support set:

- 1 Copy the **WebExtSampleTestObjects.xml** file to <QuickTest installation folder>\dat\Extensibility\Web.
- 2 In the <QuickTest installation folder>\dat\Extensibility\Web\Toolkits folder, create a folder named **WebExtSample**.
- 3 Copy the **WebExtSample.xml** file to the <QuickTest installation folder>\dat\Extensibility\Web\Toolkits\WebExtSample folder.
- 4 In the <QuickTest installation folder>\dat\Extensibility\Web\Toolkits\WebExtSample folder, create a folder named **res**.
- 5 Place the **WebBook.ico** file in <QuickTest installation folder>\dat\Extensibility\Web\Toolkits\WebExtSample\res folder.

To test the toolkit support set:

- 1 After you deploy the toolkit support set, open QuickTest.

---

**Note:** QuickTest reads toolkit support files when it opens. Therefore, if QuickTest is open, you must close QuickTest and open it again.

---

The Add-in Manager dialog box displays the **WebExtSample** as a child of the Web environment in the list of available add-ins. (If the Add-in Manager dialog box does not open, see the *HP QuickTest Professional Add-ins Guide* for instructions.)

- 2 Select the check box for **WebExtSample** and click **OK**. QuickTest opens and loads the support you designed.

- 3 Run the sample control from **Start > Programs > QuickTest Professional > Extensibility > Samples > Web Add-in Extensibility Book Sample**.

---

**Note:** QuickTest establishes its connection with an application when the application opens. Therefore, if the Book control is open, you must close it and run it again.

---

- 4 Perform the following QuickTest operations on the Book control, to see how QuickTest recognizes the control:



- ▶ Use the Object Spy to view the test object properties and test object methods that are supported for the Book control. The test object created for the Book control is given the name of its test object class. Later in this lesson, you customize your toolkit support set to provide a more specific name.



- ▶ Use the **Add Objects to Local** button in the Object Repository dialog box to learn the Book control. Ensure that the correct icon is used to represent the test object in the object repository.
- ▶ In the Keyword View, create a test step choosing the **WebExtBook** object from the object repository in the **Item** column.
  - ▶ The list of available operations in the **Operation** column reflects the definitions in the test object configuration file.
  - ▶ After you choose an operation, the **Value** cell is partitioned according to the number of arguments of the selected operation, and if you defined possible values for the operation (in the ListOfValues element), they are displayed in a list. For example, when you create a step with the operation **GoToAuthorPage**, the value cell requires one argument and displays the argument's Name attribute in a tooltip. The **AuthorName** argument currently accepts any string. Later in this lesson, you develop support for dynamically providing a list of the authors that can be used for this argument.
  - ▶ The descriptions and documentation strings you defined for test object methods in the test object configuration file are displayed in tooltips and in the Documentation column, respectively.

- In the Expert View, create a test step with a WebExtBook test object. Intellisense displays all of the operations available for the test object, and possible input values for these operations, if relevant, based on the definitions in the test object configuration file.

For more information on working with these options in QuickTest, see the *HP QuickTest Professional User's Guide*.

- 5 Run a test with a step that performs a test object method on a WebExtBook test object. QuickTest searches for a JavaScript function that will run the test object method on the control. Because you have not yet implemented support for running test object methods, a run-time error occurs. In the next section, you implement this support.

## Stage 4: Implementing Support for the WebExtBook's Test Object Methods

After enabling QuickTest to recognize the custom controls, you must provide support for running test object methods. For each test object method that you defined in the test object configuration file, you must write a JavaScript function that QuickTest runs to perform the step on the control.

In the toolkit configuration file, you need to specify the JavaScript file in which QuickTest should look for the JavaScript functions and, optionally, the name of the function to use for each test object method.

In this section, you provide support for the WebExtBook's test object methods: **Select**, **GoToAuthorPage** (*AuthorName*), and **GoToUsedBooksPage**.

It is possible to specify a JavaScript file and function for each test object method in the toolkit configuration file. However, in this lesson, you develop support for running test object methods in the simplest way possible. At the **Control** element level, you define one JavaScript file that QuickTest uses by default for all test objects methods defined within this element. As for the JavaScript function names, by default, QuickTest searches in the specified file for a JavaScript function with the same name as the test object method. Therefore, you do not need to specify the function names in the toolkit configuration file, but only to create the JavaScript functions with the correct names.

**To develop support for the WebExtBook test object methods:**

- 1** In the **WebExtSample.xml** file, within the **Control** element defined for the **WebExtBook** test object class, add the following **Settings** element:

```
<Settings>
  <Variable name="default_imp_file" value="WebExtBook.js"/>
</Settings>
```

This instructs QuickTest to search for JavaScript functions in the **WebExtBook.js** file (in the **<QuickTest installation folder>\dat\Extensibility\Web\Toolkits\WebExtSample** folder).

---

**Note:** You can modify the **WebExtSample.xml** file in the toolkit support set folder and then later deploy it to QuickTest for testing, or you can modify **<QuickTest installation folder>\dat\Extensibility\Web\Toolkits\WebExtSample\WebExtSample.xml** directly.

---

- 2** In the **WebExtBook.js** file that you created in “Stage 1: Creating the Toolkit Support Set” on page 118, paste the text below to create JavaScript functions for each test object method: **Select**, **GoToAuthorPage** (*AuthorName*), and **GoToUsedBooksPage**.

---

**Note:** The **\_elem** object is a reserved object that QuickTest uses to refer to the HTML control currently being handled.

---

## Lesson 1 • Learning to Create QuickTest Support for a Simple Custom Web Control

```
// Run implementation
// ~~~~~
// This section contains the functions that carry out the test object methods.

function Select()
{ // Click the link in the second cell of the first row.
  _elem.rows[0].cells[1].children[0].click();
}

function GoToAuthorPage(AuthorName)
{ // Look for the specified author name among the children of the first cell
  // in the second row and click it.
  var bWasFound = false;
  for( var i = 0 ; i < _elem.rows[1].cells[0].children.length ; ++i )
  {
    if( _elem.rows[1].cells[0].children[i].innerText == AuthorName )
    {
      _elem.rows[1].cells[0].children[i].click();
      bWasFound = true;
      break;
    }
  }
  if( bWasFound == false )
    throw ("Author name not found !");
}


function GoToUsedBooksPage()
{ // Click the link in the first cell of the third row.
  _elem.rows[3].cells[0].children[1].click();
}
```



## Deploying and Testing the Toolkit Support Set

After developing support for running the test object methods, you deploy the updated toolkit support set to QuickTest and test it.

### To test the support for running test object methods:

- 1** To deploy the updated toolkit support set to QuickTest, copy the **WebExtBook.js** file (and **WebExtSample.xml** if necessary) to **<QuickTest installation folder>\dat\Extensibility\Web\Toolkits\WebExtSample**.
- 2** Close and reopen QuickTest. Select the check box for **WebExtSample** in the Add-in Manager dialog box and click **OK**. QuickTest opens and loads the support you designed.
- 3** Close and rerun the sample control from **Start > Programs > QuickTest Professional > Extensibility > Samples > Web Add-in Extensibility Book Sample**.
-  **4** Use the **Add Objects to Local** button in the Object Repository dialog box to learn the Book control.
- 5** Create a test with the following step and then run the test:

```
Browser("Book").Page("Book").WebExtBook("WebExtBook").GoToAuthorPage  
"Jane Doe"
```

---

**Note:** If you run the **GoToAuthorPage** test object method with an author name that does not exist in the control, the JavaScript function throws an exception, QuickTest displays a run-time error message and the test step fails.

---

Create and run similar tests to test the **Select** and **GoToUsedBooksPage** test object methods.

## Stage 5: Implementing Support for the WebExtBook's Identification Properties

In this section you implement support for retrieving the values of identification properties during a test run. QuickTest uses identification property run-time values in different standard test object methods, such as **GetROProperty**. Identification property run-time values are also required for different basic capabilities, such as creating checkpoints and outputting values.

To support retrieving the run-time values of identification properties, you need to implement a JavaScript function that accepts a **PropertyName** parameter and returns the value of any property QuickTest requests. You must implement this method to return a value for each identification property defined in the test object configuration file.

In the toolkit configuration file, you can specify the JavaScript file in which you implemented the JavaScript function that retrieves property values. You can also specify the name of the function that you implemented for this purpose. However, if you do not specify a function name, QuickTest calls **get\_property\_value (PropertyName)** and this is the function that you must implement. If you do not specify a file name, QuickTest calls the function from the JavaScript file you specified in the **Control\Settings** element. Therefore, in this lesson, you create the **get\_property\_value** function in the **WebExtBook.js** file.

**To support retrieving the run-time values of the WebExtBook's identification properties:**

Add the following lines to the **WebExtBook.js** file:

```
// Property retrieval implementation
// ~~~~~
// The function provides values for all of the identification properties defined in
// the test object configuration XML file.

function get_property_value(prop)
{
    if ( prop == "title" )
        // For the "title" identification property,
        // Return the inner text of the second cell in the first row
```

## Lesson 1 • Learning to Create QuickTest Support for a Simple Custom Web Control

```
{
    return _elem.rows[0].cells[1].innerText;
}

if ( prop == "authors" )
// To return a list of all the authors, look for all the children
// of the first cell in the second row.
{
    var BookAuthors = "";
    var AuthorsCount = 0;
    for( var i = 0 ; i < _elem.rows[1].cells[0].children.length ; ++i )
    {
        if( _elem.rows[1].cells[0].children[i].tagName == "A" )
        {
            if( AuthorsCount > 0 )
                BookAuthors += ",";
            BookAuthors += _elem.rows[1].cells[0].children[i].innerText;
            AuthorsCount++;
        }
    }
    return BookAuthors;
}

if ( prop == "price" )
// To return the price of the book, return the innerText property of the
// first cell in the fourth row.
{
    return _elem.rows[3].cells[0].children[0].innerText;
}

if ( prop == "min_used_price" )
// To return the lowest price available for a used copy of the book,
// return the innerText property of the second child of the first cell
// in the fourth row.
{
    if( _elem.rows[3].cells[0].children.length > 2 )
        return _elem.rows[3].cells[0].children[2].innerText;
    }
}
```

**Note:** You can modify the **WebExtBook.js** file in the toolkit support set folder and then later deploy it to QuickTest for testing, or you can modify **<QuickTest installation folder>** **\dat\Extensibility\Web\Toolkits\WebExtSample\WebExtBook.js** directly.

---

## Deploying and Testing the Toolkit Support Set

After developing support for retrieving run-time values of identification properties, you deploy the updated toolkit support set to QuickTest and test it.

**To test the support for retrieving run-time values of identification properties:**

- 1** Make sure that your most updated files are located in **<QuickTest installation folder>\dat\Extensibility\Web\Toolkits\WebExtSample**.
- 2** Close and reopen QuickTest. Select the check box for **WebExtSample** in the Add-in Manager dialog box and click **OK**. QuickTest opens and loads the support you designed.
- 3** Close and rerun the sample control from **Start > Programs > QuickTest Professional > Extensibility > Samples > Web Add-in Extensibility Book Sample**.
- 4** Create a new test, add a **WebExtBook** test object to your object repository, and create a test step with this test object. Right-click the object and select **Insert Standard Checkpoint**. The Checkpoint Properties dialog box opens. Make sure that the identification properties you defined in the test object configuration file (**title**, **authors**, **price**, and **min\_used\_price**) are included in the list of properties and are selected.

- 5 Create and run a test that retrieves each identification property and checks its value, or displays it in a message box. For example, you can run the following test:

Item	Operation	Value
▼ Action1		
▼ Book		
▼ Book		
WebExtBook	CheckProperty	"authors","Jane Doe,John Doe"
WebExtBook	Check	Checkpoint("WebExtBook")
Function Call	MsgBox	Browser("Book").Page("Book").WebExtBook("WebExtBook").GetROProperty("title")

The first step checks the value of the authors property, the checkpoint in the second step checks the properties selected in the checkpoint (in this case price and min\_used\_price) and the third step displays the book's title in a message box.

- 6 Click **OK** to close the message box. The test run is completed and the test results are displayed. Expand the test results tree to view the step details.

### Stage 6: Changing the Name of the Test Object

In this section, you modify the toolkit support set to instruct QuickTest to name the WebExtBook test object according to its title, as per your plan ("Planning Support for the Web Add-in Extensibility Book Sample Toolkit" on page 109).

When QuickTest creates the test object that represents a control, it calls the **get\_property\_value** function (used for retrieving test object identification property values) with the argument **logical\_name** to determine the name for the test object. You can implement the **get\_property\_value** function accordingly, to customize the name QuickTest gives the test object. If the **get\_property\_value** function does not support the **logical\_name** property, the test object is given the name of the test object class (followed by an index, if there is more than one object of the same test object class on the same page).

**To customize the name of the test object:**

In the `get_property_value` function in the `WebExtBook.js` file, replace the lines:

```
if ( prop == "title" )  
    // For the "title" identification property,
```

with the lines:

```
if ( prop == "logical_name" || prop == "title" )  
    // For the "title" identification property, as well as the "logical_name" property
```

---

**Note:** You can modify the `WebExtBook.js` file in the toolkit support set folder and then later deploy it to QuickTest for testing, or you can modify `<QuickTest installation folder>\dat\Extensibility\Web\Toolkits\WebExtSample\WebExtBook.js` directly.

---

The `get_property_value` function now returns the same text for the `logical_name` property that QuickTest uses to name the test object, as it does for the `title` identification property. (Modify the comment that explains this function accordingly. At the end of the comment, add the following: as well as the hard coded "logical\_name" property that QuickTest uses to name the test object.)

**Deploying and Testing the Toolkit Support Set**

After developing support for naming the test object that represents the control, you deploy the updated toolkit support set to QuickTest and test it.

**To test the support for naming the WebExtBook test object:**

- 1 Make sure that your most updated files are located in `<QuickTest installation folder>\dat\Extensibility\Web\Toolkits\WebExtSample`.
- 2 Close and reopen QuickTest. Select the check box for `WebExtSample` in the Add-in Manager dialog box and click **OK**. QuickTest opens and loads the support you designed.

- 3 Close and rerun the sample control from **Start > Programs > QuickTest Professional > Extensibility > Samples > Web Add-in Extensibility Book Sample**.
- 4 Open the Object Repository and use the Add Object to Local button to learn the Book control. Make sure that the test object that QuickTest creates is named **The History of QuickTest Professional**.

## **Stage 7: Implementing a Filter to Prevent Learning Child Objects**

When you instruct QuickTest to learn a Web page, the Define Object Filter dialog box opens, enabling you to determine which of the Web page's descendants should be learned with it. When you select **All object types**, instructing QuickTest to learn the WebExtBook control with its parent Web page, all of the controls that the WebExtBook control contains are also learned as children of that Web page (and siblings of the WebExtBook control).

In the case of the Book control, there is no need to create test objects for all of its children, as described in “Planning Support for the Web Add-in Extensibility Book Sample Toolkit” on page 109.

To prevent QuickTest from learning all of the descendants of a control supported by Web Add-in Extensibility, you can define a Learn Filter. Complex filters can be implemented using a JavaScript function, in which case you specify the location and name of the function in the toolkit configuration file. Simple filters can be implemented directly in the toolkit configuration file, without using JavaScript functions.

To prevent learning the controls contained in the Book control, a simple filter is sufficient. Before you implement this filter, learn the Web page that contains the Book control with all of its descendants to see that all of the Book's children are learned as well. To do this, you can follow the procedure described in “Deploying and Testing the Toolkit Support Set” on page 136.

**To prevent learning the controls contained in the Book control:**

In the **WebExtSample.xml** file, within the **Control** element defined for the **WebExtBook** test object class, add the following **Filter** element:

```
<Filter>
  <Learn learn_control="Yes" learn_children="No"/>
</Filter>
```

This instructs QuickTest to learn WebExtBook test objects when learning their parent Web pages, but not to learn the child controls they contain.

---

**Note:** You can modify the **WebExtSample.xml** file in the toolkit support set folder and then later deploy it to QuickTest for testing, or you can modify **<QuickTest installation folder>**  
**\dat\Extensibility\Web\Toolkits\WebExtSample\WebExtSample.xml** directly.

---

**Deploying and Testing the Toolkit Support Set**

After defining the filter to prevent learning children, you deploy the updated toolkit support set to QuickTest and test it.

**To test the support for learning the WebExtBook test object without its children:**

- 1** Make sure that your most updated files are located in **<QuickTest installation folder>\dat\Extensibility\Web\Toolkits\WebExtSample**.
- 2** Close and reopen QuickTest. Select the check box for **WebExtSample** in the Add-in Manager dialog box and click **OK**. QuickTest opens and loads the support you designed.
- 3** Close and rerun the sample control from **Start > Programs > QuickTest Professional > Extensibility > Samples > Web Add-in Extensibility Book Sample**.
- 4** Open a test and open the Object Repository. Use the **Add Objects to Local** button in the Object Repository dialog box to learn the Web page that contains the Book control. The Define Object Filter dialog box opens.





- 5 Select **All object types** and click **OK**. The WebExtBook object named **The History of QuickTest Professional** is added to the object repository, but the controls in contains are not.

## Stage 8: Implementing Support for Recording on the Book Control

By this point in the tutorial, your toolkit support set already enables full QuickTest functionality. QuickTest recognizes the Book control, can learn it and can run tests on it.

An additional, optional way to create tests in QuickTest is by recording operations that a user performs on the application. As you can see in “Planning Support for the Web Add-in Extensibility Book Sample Toolkit” on page 109, by default QuickTest records plain click operations on the various Web link and image objects within the Book control. It would be more helpful to record **Select**, **GoToAuthorPage**, and **GoToUsedBooksPage** operations on the Book control itself, in response to those same clicks.

To support customized recording on your control, you must instruct QuickTest to listen to the relevant events and inform QuickTest what test steps to record in response to each event.

To do this you write two types of JavaScript functions:

- ▶ One JavaScript function uses the **RegisterForEvent** function in the **\_util** utility object that QuickTest exposes in the Web Add-in Extensibility SDK to register for listening to the correct events on the correct elements. The arguments of this function also determine what JavaScript functions QuickTest calls when each event occurs.

In the toolkit configuration file, you specify the name and, optionally, the location of this JavaScript function.

- ▶ One or more JavaScript functions that handle the events by calling the **Record** function in the **\_util** utility object to inform QuickTest what step to add to the test.

---

**Note:** The **Record** function, and other utility object functions, require a **SafeArray** type argument. To convert an array to a **SafeArray**, you can use the *toSafeArray (array)* function that Web Add-in Extensibility provides. This function is defined in **<Web Add-in Extensibility installation folder>\dat\Extensibility\Web\Toolkits\common.js**.

---

For information on the syntax of the utility object functions, see the *QuickTest Web Add-in Extensibility API Reference* (available with the Web Add-in Extensibility SDK online Help).

**To develop support for recording on the Book control:**

---

**Note:** You can modify the **WebExtSample.xml** and **WebExtBook.js** files in the toolkit support set folder and then later deploy them to QuickTest for testing, or you can modify these files in **<QuickTest installation folder>\dat\Extensibility\Web\Toolkits\WebExtSample** directly.

---

- 1** In the toolkit configuration file, within the **Control** element add the following **Record\EventListenering** element:

```
<Record>
  <EventListenering
    use_default_event_handling_for_children="false"
    use_default_event_handling="false"
    type="javascript" function="ListenToEvents"/>
</Record>
```

This instructs QuickTest not to use the default Web Event Configuration for handling events on the Book control and its children, but to call the JavaScript function **ListenToEvents**. Because you did not specify a JavaScript file, QuickTest looks for the JavaScript function in the **WebExtBook.js** file that you specified at the **Control** level for the WebExtBook test object class.

**2** In the **WebExtBook.js** file, add the following **ListenToEvents** function:

```
function ListenToEvents( elem )
{
    // Connect to the "Select" event: When the book name or the book icon is
    // clicked, call OnSelectClicked.
    _util.RegisterForEvent( _elem.rows[0].cells[0].children[0], "onclick" ,
        "OnSelectClicked" );
    _util.RegisterForEvent( _elem.rows[0].cells[1].children[0], "onclick" ,
        "OnSelectClicked" );

    // Connect to the "Author" event: When an author name is clicked, call
    // OnAuthorClicked.
    for( var i = 0 ; i < _elem.rows[1].cells[0].children.length ; ++i )
    {
        if( _elem.rows[1].cells[0].children[i].tagName == "A" )
        {
            _util.RegisterForEvent( _elem.rows[1].cells[0].children[i], "onclick" ,
                "OnAuthorClicked" );
        }
    }

    // Connect to the "UsedBooks" event: When "Used" is clicked, call
    // OnUsedBooksClicked.
    if( _elem.rows[3].cells[0].children.length > 1 )
        _util.RegisterForEvent( _elem.rows[3].cells[0].children[1], "onclick" ,
            "OnUsedBooksClicked" );
    return true;
}
```

This function registers QuickTest to listen to click events on the book's title, image, and authors, and on the **Used** link. When registering for an event, this function specifies what JavaScript function QuickTest must call when the event occurs.

- 3** In the **WebExtBook.js** file add the following event handler JavaScript functions:

```
function OnSelectClicked( handlerParam , eventObj )
{
    // Record the "Select" step
    var arr = new Array();
    _util.Record( "Select", toSafeArray(arr) , 0 );
    return true;
}
```

```
function OnAuthorClicked( handlerParam , eventObj )
{
    // Record the "GoToAuthorPage" step
    var arr = new Array();
    arr[0] = eventObj.srcElement.innerText;
    _util.Record( "GoToAuthorPage", toSafeArray(arr) , 0 );
    return true;
}
```

```
function OnUsedBooksClicked( handlerParam , eventObj )
{
    // Record the "GoToUsedBooksPage" step
    var arr = new Array();
    _util.Record( "GoToUsedBooksPage", toSafeArray(arr) , 0 );
    return true;
}
```

These functions record **Select**, **GoToAuthorPage**, and **GoToUsedBooksPage** on the WebExtBook test object, as planned in “Planning Support for the Web Add-in Extensibility Book Sample Toolkit” on page 109.

## Deploying and Testing the Toolkit Support Set

After developing the support for recording on the Book control, you deploy the updated toolkit support set to QuickTest and test it.

**To test the support for recording operations performed on the Book control:**

- 1 Make sure that your most updated files are located in <QuickTest installation folder>\dat\Extensibility\Web\Toolkits\WebExtSample.
- 2 Close and reopen QuickTest. Select the check box for **WebExtSample** in the Add-in Manager dialog box and click **OK**. QuickTest opens and loads the support you designed.
- 3 Close and rerun the sample control from **Start > Programs > QuickTest Professional > Extensibility > Samples > Web Add-in Extensibility Book Sample**.
- 4 Click the **Record** button or choose **Automation > Record**. Click on different links in the Book control (you must return to the previous page after each click, to return to the Book control): the book title, the image in the control, an author name, and the **Used** link.

With each click, a new step is added to the test:

Item	Operation	Value	Documentation
▼ Action1			
▼ Book			
▼ Book			
The History of QuickTest	Select		Select the "The History of QuickTest" book.
Not Implemented	Sync		Wait for the Web page to synchronize before continuing.
Book	Back		Navigate back to the previous page of the browser.
▼ Book			
The History of QuickTest	Select		Select the "The History of QuickTest" book.
Not Implemented	Sync		Wait for the Web page to synchronize before continuing.
Book	Back		Navigate back to the previous page of the browser.
▼ Book			
The History of QuickTest	GoToAuthorPage	"Jane Doe"	Open the Web page for "Jane Doe".
Not Implemented_2	Sync		Wait for the Web page to synchronize before continuing.
Book	Back		Navigate back to the previous page of the browser.
▼ Book			
The History of QuickTest	GoToUsedBooksPage		Open the "The History of QuickTest" used books page.

Click the **Stop** button or choose **Automation > Stop** to end the recording session.

## Stage 9: Implementing Support for Dynamic List of Values for AuthorName

Using Web Add-in Extensibility, you can provide the QuickTest user a list of possible values to use for a test object method argument, based on the run-time values of the specific control. For example, the **GoToAuthorPage** test object method of the **WebExtBook** test object class receives an **AuthorName** argument. It is easier for the QuickTest users if they can select an author name from a list of possibilities instead of typing the name. However, this list is different for each **WebExtBook** control.

In the test object configuration file, you defined the **DynamicListOfValues** attribute for the **AuthorName** argument as **true**, instructing QuickTest to request the list of possible values from the control when creating a test step.

In the toolkit configuration file, you can specify the file name and function name of the JavaScript function that QuickTest must call to retrieve the list of values. By default, QuickTest requests the list of values by calling the **get\_list\_of\_values** JavaScript function from the **WebExtBook.js** file that you specified at the **Control** level for the **WebExtBook** test object class. QuickTest calls the JavaScript function for every argument whose **DynamicListOfValues** attribute is set to **true** in the test object configuration file. The parameters provided to this function indicate the test object method and argument for which the values are being requested.

In this section, you implement the **get\_list\_of\_values** JavaScript function, to return the author names from the **Book** control.

**To provide a dynamic list of values for the AuthorName argument in the GoToAuthorPage test object method:**

In the **WebExtBook.js** file add the JavaScript functions:

```
// Dynamic list of values implementation
// ~~~~~
function get_list_of_values( method, argIndex )
{
    // When creating a step with the GoToAuthorPage test object method,
    // provide a list of the authors of this book, that can be used for the method's
    // argument.
    if (method == "GoToAuthorPage")
    {
        return get_GoToAuthorPage_list_of_values(argIndex);
    }

    return null;
}

function get_GoToAuthorPage_list_of_values(argIndex)
{
    var arr = new Array();
    if( argIndex > 1 )
        return toSafeArray(arr);

    // Retrieve all authors
    var AuthorsCount = 0;
    for( var i = 0 ; i < _elem.rows[1].cells[0].children.length ; ++i )
    {
        if( _elem.rows[1].cells[0].children[i].tagName == "A" )
        {
            arr[AuthorsCount]=""+"+_elem.rows[1].cells[0].children[i].innerText+"\\"";
            AuthorsCount++;
        }
    }
    return toSafeArray(arr);
}
```

This returns a list of the book's authors, each enveloped in quotation marks.

The Book custom control is now fully supported, according to the specifications you decided on when planning your custom support.

---

**Note:** You can modify the **WebExtSample.xml** file in the toolkit support set folder and then later deploy it to QuickTest for testing, or you can modify **<QuickTest installation folder>**  
**\dat\Extensibility\Web\Toolkits\WebExtSample\WebExtSample.xml** directly.

---

### **Deploying and Testing the Toolkit Support Set**

After implementing the **get\_list\_of\_values** JavaScript function, you deploy the updated toolkit support set to QuickTest and test that the dynamic list of author names is properly provided.

**To test the support for recording operations performed on the Book control:**

- 1** Make sure that your most updated files are located in **<QuickTest installation folder>\dat\Extensibility\Web\Toolkits\WebExtSample**.
- 2** Close and reopen QuickTest. Select the check box for **WebExtSample** in the Add-in Manager dialog box and click **OK**. QuickTest opens and loads the support you designed.
- 3** Close and rerun the sample control from **Start > Programs > QuickTest Professional > Extensibility > Samples > Web Add-in Extensibility Book Sample**.
- 4** Open a test and create a step with a **WebExtBook** test object and the **GoToAuthorPage** test object method. The names of the authors displayed on the Book control are displayed in a drop-down menu in the **Value** column in the Keyword View.



## Lesson Summary

In this lesson you created a new test object class, `WebExtBook`, defining its identification properties and test object methods. You created support for the Book control, enabling QuickTest to recognize it as an `WebExtBook` test object.

- ▶ You learned to understand the test object configuration file.
- ▶ You learned to understand the toolkit configuration file.
- ▶ You learned to support new identification properties and test object methods.
- ▶ You learned to create a filter for preventing child controls from being learned.
- ▶ You learned to support recording and you made use of the **Record** and **RegisterForEvent** utility methods.
- ▶ You learned how to provide a dynamic list of values for a test object argument.

### Where Do You Go from Here?

For more information on the structure and content of a toolkit support set, see “Developing Support for Your Toolkit” on page 59.

For more information on the structure and content of the test object configuration file, see the *QuickTest Test Object Schema Help* (available with the Web Add-in Extensibility SDK online Help).

For more information on the structure and content of the toolkit configuration file, see the *QuickTest Web Add-in Extensibility Toolkit Configuration Schema Help* (available with the Web Add-in Extensibility SDK online Help).

For more information on the `_util` utility object methods, see the *QuickTest Web Add-in Extensibility API Reference* (available with the Web Add-in Extensibility SDK online Help).

## Lesson 1 • Learning to Create QuickTest Support for a Simple Custom Web Control

In the next lesson you learn how to create support for the **Used Books** custom control. The test object class that represents the Used Books control extends the existing WebTable test object class. In developing QuickTest support for this control you will learn to use some of the more advanced options that Web Add-in Extensibility has to offer.

# 2

---

## Learning to Create QuickTest Support for a Complex Custom Web Control

In this lesson you create support for the Used Books control in the Web Add-in Extensibility Book Sample toolkit. The test object class that represents the Used Books control extends the existing WebTable test object class. Creating support for the Used Books control teaches you how to use some of the more advanced options of Web Add-in Extensibility.

In the lesson “Learning to Create QuickTest Support for a Simple Custom Web Control” on page 107, you learned to create support for a simple custom control. You are now familiar with the basics of Web Add-in Extensibility, therefore this lesson explains only the more advanced information.

The <QuickTest Professional Web Add-in Extensibility SDK installation folder>\samples\WebExtSample\Toolkit Support Set folder contains a complete toolkit support set for this sample to which you can refer while you perform this lesson.

### **This chapter includes:**

- Preparing for This Lesson on page 148
- Planning Support for the Web Add-in Extensibility Used Books Control on page 149
- Developing the Toolkit Support Set on page 157
- Lesson Summary on page 174

## Preparing for This Lesson

Before you extend QuickTest support for a custom control, you must have access to its source file. You do not need to modify any of the custom control's sources to support it in QuickTest, but you do need to be familiar with them. Make sure you know what elements and attributes comprise the control, the events that may occur on this control, and so on. You use this information when you design the support.

The source file for the Used Books control is located in **<QuickTest Professional Web Add-in Extensibility SDK installation folder>\samples\WebExtSample\Application\UsedBooks.htm**.

You can run the sample control from **Start > Programs > QuickTest Professional > Extensibility > Samples > Web Add-in Extensibility Book Sample**. The Book control opens. In the Book control, click **Used** to run the Used Books control.

<u>The History of QuickTest Professional</u>			
	#	State	Price
<input type="radio"/>	1	As new.	35.99\$
<input type="radio"/>	2	As new.	32.99\$
<input type="radio"/>	3	Some folded ears.	29.99\$
<input type="radio"/>	4	New.	44.50\$

[Select ...](#)

[Back to book ...](#)

Run the control, open its source file, and study the control's behavior and implementation.

The Used Books control is implemented as a **div** element that comprises a Web table containing information about the available used copies of this book and radio buttons, and a **Select** link (outside the table element) used to select a book from the list. Selecting a book and opening the page about the selected book (which is not implemented in this sample) requires selecting the radio button in the relevant row in the table and then clicking **Select**.

## Planning Support for the Web Add-in Extensibility Used Books Control

In this section, you analyze how QuickTest currently recognizes the Used Books control versus the way it should recognize it, based on your knowledge of the control. Next, you determine the answers to the questions in the “Understanding the Web Add-in Extensibility Planning Checklist” on page 54, and fill in the “Web Add-in Extensibility Planning Checklist” on page 155, accordingly.

The best way to do this is to analyze the Used Books control from a QuickTest perspective on the one hand using the Object Spy, Keyword View, and Record option, and on the other hand, to consider how the control is implemented and the purposes for which it is used.

### 1 Open QuickTest and Run the Used Books control.

Open QuickTest and load the Web Add-in.

Close any open instances of the Used Books control and open it by selecting **Start > Programs > QuickTest Professional > Extensibility > Samples > Web Add-in Extensibility Book Sample** and then clicking **Used** in the Book control that opens.

### 2 Use the Object Spy to view the Used Books test object methods.



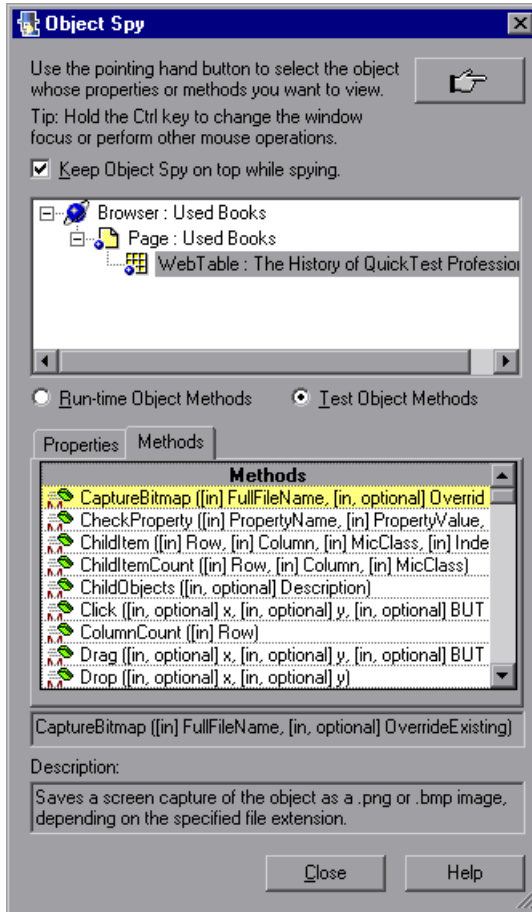
In QuickTest, choose **Tools > Object Spy** or click the **Object Spy** toolbar button to open the Object Spy dialog box. Click the **Methods** tab and select **Test Object Methods**.



In the Object Spy dialog box, click the pointing hand, then click the Used Books table.

## Lesson 2 • Learning to Create QuickTest Support for a Complex Custom Web Control

The Used Books control contains a Web table, for which QuickTest support is built in, therefore it recognizes the control as a **WebTable**, named according to the title of the table. The icon used for the test object is the standard WebTable class icon. QuickTest ignores the **div** element, which is actually the root of the Used Books control.



Close the Object Spy.

### 3 Record operations on the Used Books control.

In QuickTest, choose **Automation > Record and Run Settings** to open the Record and Run Settings dialog box. In the Web tab, select **Record and run test on any open browser**. Click **OK**.

Click the **Record** button or choose **Automation > Record**. In the Used Books table, select one of the radio buttons and then click **Select**.

With each click, a new step is added to the test:

Item	Operation	Value	Documentation
▼ Action1			
▼ Used Books			
▼ Used Books			
● SelUsedBook	Select	"#2"	Select the "#2" radio button in the "SelUsedBook" radio button group.
🔗 Select ...	Click		Click the "Select ..." link.

Click the **Stop** button or choose **Automation > Stop** to end the recording session.

The recorded steps reflect the selection of the radio button and the clicking of the link separately, and do not recognize these operations as related to the Used Books control.

### 4 Determine the custom toolkit to which the Used Books control belongs.

When you extend QuickTest support for a control you always do so in the context of a toolkit. For the purpose of this tutorial, two custom Web controls are grouped to form the custom toolkit named WebExtSample: Book and UsedBooks.

You created the toolkit support set for this toolkit in the previous lesson. In this lesson you add support for the Used Books control in the WebExtSample toolkit support set.

## 5 Complete the custom control support planning checklist.

This section describes the required support for the Used Books control, and then summarizes the information in the support planning checklist.

### a Choosing the test object class that represents the custom control:

The internal content of the Used Books control is implemented as a Web table control because of the type of information it contains. For the purpose of performing tests on the Used Books control and checking the information it contains, it is appropriate that QuickTest recognize this control as a table. However, to optimally support the Used Books control, the test object that represents the control must support a **SelectBook** test object method that selects a book from the table by selecting the radio button in the correct row in the table, and clicking **Select**.

In addition, because the first row in the Used Books table contains the column names, it would be helpful to replace (or override) the **RowCount** test object method supported for WebTable objects to reduce the row count and return the number of used copies available for this book. To support the **SelectBook** test object method and override the implementation of **RowCount**, you create a new test object class named **WebExtUsedBooks**, which extends **WebTable**. You then teach QuickTest to identify this test object class as the one that represents the Used Books control.

### b Defining how QuickTest will identify which test object class to use to represent the control:

If the following conditions are met, use a **WebExtUsedBooks** test object to represent the control:

- ▶ The control's **tagName** property is **div**.
- ▶ The **tagName** property of the control's first child is **table**.
- ▶ The **className** property of the control's first child is **UsedBooks**.

### c Deciding the details for the new test object class:

- ▶ The new test object class is represented by the icon file:  
`<QuickTest installation folder>\dat\Extensibility\Web\Toolkits\WebExtSample\res\WebBookList.ico`
- ▶ No Help file is provided.



- ▶ The **WebExtUsedBooks** test object class needs to support all of the test object methods supported by the **WebTable** test object class. In addition, it needs to support a **title** identification property (used to uniquely identify the control, and selected by default in the checkpoint properties dialog box, not used for Smart Identification) and the **SelectBook** test object method.
  - ▶ All of the methods inherited from the base class, **WebTable**, can be supported by the **table** element contained in the Used Books control. However, because the **table** element is not the root element of the Used Books control, QuickTest does not recognize this element as the base element. You must implement a JavaScript function that returns the **table** element as the base element for the Used Books control. This instructs QuickTest to use the **table** element to support the operations inherited from the base **WebTable** test object class.
  - ▶ The **SelectBook** test object method simulates selecting the radio button for the specified book and clicking **Select**.
  - ▶ The **WebTable** test object method **RowCount** needs to be overridden, to return the actual number of books in the table instead of the number of rows.
- ▶ The name of the test object itself should be the same as its **title** identification property.
- d** Defining which of the control's children QuickTest should learn when learning the control:

For the purpose of this tutorial, when a **WebExtUsedBooks** test object is learned as part of a Web page, the radio buttons within in should be learned as well.
- e** Deciding whether the Object Spy should display **WebExtUsedBooks** test objects: Yes.
- f** Defining whether to support recording, and what events to record:

Listen to mouse clicks that occur on the **Select** link. When this link is clicked, record a test step that selects the book whose radio button is selected.

- g** Deciding what parts of the support need to be designed in the toolkit configuration file and what parts need JavaScript functions:
  - ▶ For the Used Books control, test object class identification is performed by a JavaScript function, specified in the toolkit configuration file. To avoid unnecessary calls to the JavaScript function, a condition element is defined in the toolkit configuration file, instructing QuickTest to call the JavaScript function only if the control is defined as a **div** element.
  - ▶ The **table** base element must be returned by a JavaScript function specified in the toolkit configuration file.
  - ▶ Test object identification properties can be supported by JavaScript functions using the default naming convention, therefore no changes are required in the toolkit configuration file.
  - ▶ The WebTable's **RowCount** test object method is overridden by a new implementation, provided by a JavaScript function named **BookCount**. Therefore, the name of the function needs to be specified in the toolkit configuration file.
  - ▶ Filtering the children that are learned with the Used Books control is done by calling a JavaScript function that needs to be specified in the toolkit configuration file.
  - ▶ To support recording, you modify the toolkit configuration file to turn off the default Web Event Configuration and specify the JavaScript function that registers QuickTest to listen to the correct event. In addition, you design one JavaScript function that handles event registration, and additional JavaScript functions that instruct QuickTest to record the relevant steps when the events occur.

Below, you can see the checklist, completed based on the information above.

## Web Add-in Extensibility Planning Checklist

<input checked="" type="checkbox"/>	Custom Control Support Planning Checklist	Specify in Toolkit XML?	Support by JavaScript function?
<input type="checkbox"/>	The sources for this custom control are located in: <QuickTest Professional Web Add-in Extensibility SDK installation folder>\samples\WebExtSample\Application\UsedBooks.htm	n/a	n/a
<input type="checkbox"/>	Specify the Web test object base class that the new test object class extends: (Default—WebElement) WebTable	n/a	n/a
<input type="checkbox"/>	Is the base test object class WebElement? No If No, is there a base element (an element that matches the base test object class)? Yes If there is a base element, do you need a JavaScript function to return it? Yes	Yes	Yes
<input type="checkbox"/>	Specify the New Web test object class details: <ul style="list-style-type: none"> <li>▶ Test object class name: WebExtUsedBooks</li> <li>▶ Icon file location (optional):            &lt;QuickTest installation folder&gt;\dat\Extensibility\Web\Toolkits\WebExtSample\res\WebBookList.ico</li> <li>▶ Identification properties for description: title</li> <li>▶ Default test object method: SelectBook</li> <li>▶ Help file location: n/a</li> </ul>	n/a	n/a
<input type="checkbox"/>	Specify the basis for identifying the test object class to use for the control: tagName = div tagName of 1st child = table className of 1st child = UsedBooks.	Yes	Yes
<input type="checkbox"/>	Specify the basis for naming the test object: Use the Used Books table title	n/a	Yes

**Lesson 2 • Learning to Create QuickTest Support for a Complex Custom Web Control**

<input checked="" type="checkbox"/>	<b>Custom Control Support Planning Checklist</b>	<b>Specify in Toolkit XML?</b>	<b>Support by JavaScript function?</b>
<input type="checkbox"/>	List the identification properties to support, and mark which should be available (and which selected by default) for checkpoints and which (if any) should be used for Smart Identification: title (available for checkpoints and selected by default, not used for Smart Identification)	No	Yes
<input type="checkbox"/>	List the test object methods to support (if required, include arguments, return values, Help file location and Help ID): SelectBook (BookIndex) RowCount	Yes	Yes
<input type="checkbox"/>	Provide a dynamic list of values for any test object method arguments? No If so, list the arguments:	n/a	No
<input type="checkbox"/>	Specify the types of children that QuickTest should learn with the control: Radio buttons	Yes	Yes
<input type="checkbox"/>	Display test objects of this class in the Object Spy? Yes	No	n/a
<input type="checkbox"/>	Provide support for recording? Yes If so, list the events that should trigger recording: Click on Select	Yes	Yes

## Developing the Toolkit Support Set

Follow the steps in this section to develop the toolkit support set for the WebExtSample toolkit and learn more about Web Add-in Extensibility. Developing this toolkit support set comprises the following stages:

- ▶ Stage 1: Expanding the Toolkit Support Set to Support an Additional Control, described on page 157
- ▶ Stage 2: Teaching QuickTest to Identify, Spy, and Learn the Used Books Control, described on page 159
- ▶ Stage 3: Implementing Support for the WebExtUsedBooks' Test Object Methods, described on page 164
- ▶ Stage 4: Implementing Support for the WebExtUsedBooks' Identification Properties and the Test Object Name, described on page 167
- ▶ Stage 5: Implementing a Filter to Prevent Learning Child Objects, described on page 169
- ▶ Stage 6: Implementing Support for Recording on the Used Books Control, described on page 171

### Stage 1: Expanding the Toolkit Support Set to Support an Additional Control

To add support for the Used Books control, you first add the definition for the **WebExtUsedBooks** test object class to the **WebExtSampleTestObjects.xml** file.

**To expand the toolkit support set to support the Used Books control:**

- 1** Copy the icon file for the Used Books control, **WebBookList.ico**, from **<Web Add-in Extensibility installation folder>\samples\WebExtSample\Toolkit Support Set\Toolkits\WebExtSample\res** to the **<toolkit support set folder>\Toolkits\WebExtSample\res** folder.

- 2 Add the following definition for the **WebExtUsedBooks** test object class to the **WebExtSampleTestObjects.xml** file (within the **TypeInformation** element, after the **ClassInfo** element for the **WebExtBook** test object class):

```
<ClassInfo BaseClassInfoName="WebTable" GenericTypeID="Table"
  DefaultOperationName="SelectBook" Name="WebExtUsedBooks">
  <IconInfo IconFile="INSTALLDIR\dat\Extensibility\Web\Toolkits\
    WebExtSample\res\WebBookList.ico"/>
  <TypeInfo>
    <Operation ExposureLevel="CommonUsed" Name="SelectBook"
      PropertyType="Method">
      <Description>Selects the radio button for the specified book and clicks
        Select.</Description>
      <Documentation><![CDATA[Select the radio button for the book with
        index %a1 and click Select.]]></Documentation>
      <Argument Name="BookIndex" IsMandatory="true" Direction="In">
        <Type VariantType="Integer"/>
      </Argument>
    </Operation>
  </TypeInfo>
  <IdentificationProperties>
    <IdentificationProperty ForDefaultVerification="true"
      ForVerification="true"
      ForDescription="true" Name="title"/>
  </IdentificationProperties>
</ClassInfo>
```

This defines the **WebExtUsedBooks** test object class according to the details described in the “Web Add-in Extensibility Planning Checklist” on page 155.

For more information on the elements and attributes in the test object configuration file, see the *QuickTest Test Object Schema Help* (available with the Web Add-in Extensibility SDK online Help).

## Stage 2: Teaching QuickTest to Identify, Spy, and Learn the Used Books Control

After you define the new test object class you must enable QuickTest to identify the Web controls for which to use this test object class.

As described in “Planning Support for the Web Add-in Extensibility Used Books Control” on page 149, a **WebExtUsedBooks** test object is used to represent a control whose **tagName** property is **div**, if the **tagName** and **className** properties of the control’s first child are **table** and **UsedBooks** respectively.

For the **WebExtUsedBooks** test object class, identification is carried out by a combination of **Condition** elements in the toolkit configuration file and a JavaScript function.

**To define the identification rules for the WebExtUsedBooks test object class:**

- 1 In the **WebExtSample.xml** file, within the **Controls** element, add the following **Control** element for this test object type:

```
<Control TestObjectClass="WebExtUsedBooks">
  <Settings>
    <Variable name="default_imp_file" value="WebExtUsedBooks.js"/>
  </Settings>
  <Identification type="javascript" function="IsWebExtUsedBooks">
    <Conditions type="CallIDFuncIfPropMatch" logic="and">
      <Condition prop_name="tagName" expected_value="div"/>
    </Conditions>
  </Identification>
</Control>
```

This defines that QuickTest will look for JavaScript functions in the file **WebExtUsedBooks.js** unless another file is specified. The **Identification** element includes one **Conditions** element that specifies that if the **tagName** property of the control being handled is **div** (case-insensitive compare), the JavaScript function **IsWebExtUsedBooks** is called to identify whether to use this test object class to represent the control.

- 2 In the toolkit support set folder, in the **Toolkits\WebExtSample** folder, create a file named **WebExtUsedBooks.js** (This is the file for all of the JavaScript functions you design to support the Used Books control).

- 3 In **WebExtUsedBooks.js**, add the following JavaScript function:

```
function IsWebExtUsedBooks()
{ // Verify that the tagName property is "div" and the className property of the
  // first child (a TABLE element) is "UsedBooks".
  var firstChild = _elem.children[0];
  if ( _elem.tagName == "DIV" &&
      firstChild.tagName == "TABLE" &&
      firstChild.className == "UsedBooks" )
    return true;

  return false;
}
```

This JavaScript function checks whether the control meets the conditions that determine that a control should be represented by a **WebExtUsedBooks** test object.

### **Deploying and Testing the Toolkit Support Set**

After defining the **WebExtUsedBooks** test object class in the test object configuration file and the identification rules for this test object class in the toolkit configuration file and JavaScript functions, you can test the effect of using the toolkit support set with QuickTest.

#### **To test the toolkit support set:**

- 1 Deploy the test object configuration file, toolkit configuration file, icon file, and JavaScript file to their correct locations within the QuickTest installation folder.
- 2 Open QuickTest and load the **WebExtSample** support (select it in the Add-in Manager dialog box).
- 3 Run the sample control from **Start > Programs > QuickTest Professional > Extensibility > Samples > Web Add-in Extensibility Book Sample** and click **Used**.



**Note:** QuickTest establishes its connection with an application when the application opens. Therefore, if the Used Books control is open, you must close it and run it again.

---

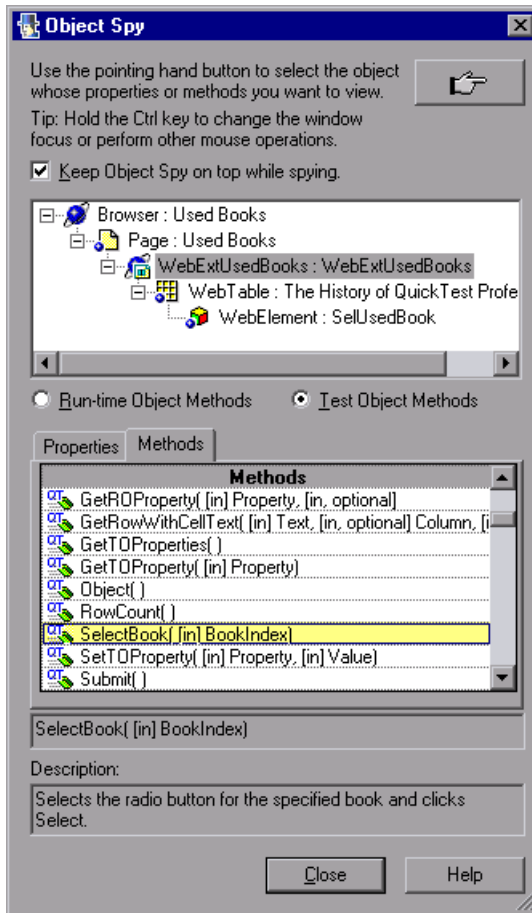
**4** Perform the following QuickTest options on the Used Books control, to see how QuickTest recognizes the control:



- Use the Object Spy to view the test object properties and test object methods that are supported for the Used Books control. No value is displayed for the **title** property because you have not yet implemented a JavaScript function that returns its value.

The test object created for the Used Books control is given the name of its test object class, and uses the custom icon you defined. Later in this lesson, you customize your toolkit support set to provide a more specific name.

The **WebExtUsedBooks** test object includes all of the test object methods of a WebTable test object, as well as the Select method that you defined in the test object configuration file.



- ▶ Use the **Add Objects to Local** button in the Object Repository dialog box to learn the Used Books control. The custom icon is used to represent the test object in the object repository.
- ▶ In the Keyword View, create a test step choosing the **WebExtUsedBooks** object from the object repository in the **Item** column.

- ▶ The list of available operations in the **Operation** column reflects the definitions in the test object configuration file. All of the test object methods supported by WebTable test objects are available, because in the test object configuration file, you defined that the WebExtUsedBooks test object extends (and therefore inherits from) the WebTable test object class.
- ▶ After you choose an operation, the **Value** cell is partitioned according to the number of arguments of the selected operation. For example, when you create a step with the operation **SelectBook**, the value cell requires one argument and displays the argument's Name attribute in a tooltip.
- ▶ The descriptions and documentation strings you defined for test object methods in the test object configuration file are displayed in tooltips and in the Documentation column, respectively.
- ▶ In the Expert View, create a test step with a WebExtBook test object. Intellisense displays all of the operations available for the test object, including the ones inherited from WebTable.

For more information on working with these options in QuickTest, see the *HP QuickTest Professional User's Guide*.

- 5** Run a test with a step that performs the SelectBook test object method on a WebExtUsedBooks test object. QuickTest searches for a JavaScript function that will run the test object method on the control. Because you have not yet implemented support for running test object methods, a run-time error occurs. In the next section, you implement this support.

### Stage 3: Implementing Support for the WebExtUsedBooks' Test Object Methods

In the test object configuration file you defined the test object methods available for WebExtUsedBooks test objects. For QuickTest to run these test object methods, the methods must actually be implemented.

You must provide implementation for different types of test object methods:

- ▶ Test object methods inherited from the WebTable base test object class
- ▶ Test object methods added for the new test object class
- ▶ Test object methods inherited from the base class that need to be implemented differently

#### Implementing Test Object Methods Inherited from WebTable

In the test object configuration file, you defined that the WebExtUsedBooks test object class extends the base class WebTable. For the inherited WebTable test object methods that you do not override, QuickTest can use its internal implementation by interacting with the **table** base element defined within the Used Books control. Because the **table** element is not the root level of the Used Books control, you must inform QuickTest that the **table** element is the base element. To do this you must write a JavaScript function that returns the base element, and specify its name in the toolkit configuration file.

To instruct QuickTest to use the **table** Web element as the base element:

- 1 In the **WebExtSample.xml** file, within the **Settings** element that you defined in the **Control** element for the WebExtUsedBooks test object class, add the following **Variable** element:

```
<Control TestObjectClass="WebExtUsedBooks">
  <Settings>
    <Variable name="func_to_get_base_elem" value="GetTableElem"/>
  </Settings>
</Control>
```

This instructs QuickTest to call a JavaScript named **GetTableElem** (in the file **WebExtUsedBooks.js**) to return the base element that supports the inherited WebTable test object methods.

**2** In the **WebExtUsedBooks.js** file, add the following JavaScript function:

```
function GetTableElem()
{
    // Get the <table> element (the first child of the <div> element which is the
    // root of the Used Books control)
    return _elem.children[0];
}
```

This JavaScript function returns the **table** element, which is the first element within the **div** element that defines the Used Books control. This element supports the test object methods inherited from **WebTable** that are not implemented by **WebExtUsedBooks**.

Other JavaScript functions that you write in this file can also use the **GetTableElem()** function to access the table element in the Used Books control.

### Implementing the New Test Object Method **SelectBook**

To support the **SelectBook** test object method for the **WebExtUsedBooks** test object class, write the **SelectBook** JavaScript function in **WebExtUsedBooks.js**. This is the function that QuickTest calls to run the **SelectBook** test object method. It simulates selecting the radio button for the specified book, and clicking **Select**.

Add the following JavaScript function to the **WebExtUsedBooks.js** file:

```
function SelectBook( BookIndex )
// Select the radio button for the specified index and clicks the "Select" link.
{
    if( BookIndex > BookCount() )
        throw "Book index is out of range !"
    // Select the radio button corresponding to the specified index
    GetTableElem().rows[1+BookIndex].cells[0].children[0].click();
    // Click the "Select" link (the 3rd child of the <div> element)
    _elem.children[2].click();
    // Add a log message to the Event Viewer to assist in debugging
    _util.LogLine("Book Selected",1);
}
```

## Overriding the Implementation of the Inherited Test Object Method RowCount

- 1 In the **WebExtSample.xml** file, add the following **Run** element within the **Control** element that defines the **WebExtUsedBooks** support.

```
<Run>
  <Methods>
    <Method name="RowCount" type="javascript"
      function="BookCount" />
  </Methods>
</Run>
```

This defines that the **RowCount** test object method is implemented by the JavaScript function **BookCount**.

- 2 In the **WebExtUsedBooks.js** file, add the **BookCount** JavaScript function, which decreases the row count of the Used Books control, to return the number of books in the table:


```
function BookCount()
// This function overrides the RowCount test object method inherited from
// WebTable, so that it counts only book rows.
{
  var table = GetTableElem();
  if( table.rows.length < 2 )
    return 0;
  return table.rows.length - 2;
}
```

## Deploying and Testing the Toolkit Support Set

After you develop support for running the test object methods, you deploy the updated toolkit support set to QuickTest and test it.

**To test the support for running test object methods:**

- 1 To deploy the updated toolkit support set to QuickTest, copy the **WebExtUsedBooks.js** file (and **WebExtSample.xml** if necessary) to **<QuickTest installation folder>**  
**\dat\Extensibility\Web\Toolkits\WebExtSample.**

- 2 Close and reopen QuickTest. Select the check box for **WebExtSample** in the Add-in Manager dialog box and click **OK**. QuickTest opens and loads the support you designed.
- 3 Close and rerun the sample control from **Start > Programs > QuickTest Professional > Extensibility > Samples > Web Add-in Extensibility Book Sample**. Click **Used**.
-  4 Use the **Add Objects to Local** button in the Object Repository dialog box to learn the Used Books control.
- 5 Create a test that runs the SelectBook and RowCount methods and make sure they perform correctly.

### **Stage 4: Implementing Support for the WebExtUsedBooks' Identification Properties and the Test Object Name**

In the **WebExtUsedBooks.js** file, implement the **get\_property\_value** as follows:

```
function get_property_value(prop)
// The function provides values for all of the identification properties defined in
// the test object configuration XML file, as well as the hard coded "logical_name"
// property that QuickTest uses to name the test object.
{
    if ( prop == "logical_name" || prop == "title" )
        // For the "title" identification property, as well as the "logical_name"
        // property, return the inner text of the first cell in the first row
        {
            return GetTableElem().rows[0].cells[0].innerText;
        }
}
```

This function returns the title of the object for the **title** property, as well as for the test object name.

**Note:** You can modify the **WebExtUsedBooks.js** file in the toolkit support set folder and then later deploy it to QuickTest for testing, or you can modify **<QuickTest installation folder>\dat\Extensibility\Web\Toolkits\WebExtSample\WebExtUsedBooks.js** directly.

---

## Deploying and Testing the Toolkit Support Set

After you develop support for retrieving run-time values of identification properties, you deploy the updated toolkit support set to QuickTest and test it.

**To test the support for retrieving run-time values of identification properties:**

- 1** Make sure that your most updated files are located in **<QuickTest installation folder>\dat\Extensibility\Web\Toolkits\WebExtSample**.
- 2** Close and reopen QuickTest. Select the check box for **WebExtSample** in the Add-in Manager dialog box and click **OK**. QuickTest opens and loads the support you designed.
- 3** Close and rerun the sample control from **Start > Programs > QuickTest Professional > Extensibility > Samples > Web Add-in Extensibility Book Sample**. Click **Used**.
- 4** Create a new test, add a **WebExtUsedBooks** test object to your object repository, and create a test step with this test object. Make sure that the test object name is based on the table's title. Right-click the object and select **Insert Standard Checkpoint**. The Checkpoint Properties dialog box opens. Make sure that the **title** identification property you defined in the test object configuration file is included in the list of properties and selected.
- 5** Create and run a test that retrieves each identification property and checks its value, or displays it in a message box.



## Stage 5: Implementing a Filter to Prevent Learning Child Objects

In this section, you create a filter to prevent QuickTest from learning all of the Used Books control's children along with the control.

You implement this in the toolkit configuration file and in the JavaScript file.

**To filter the children learned with the Used Books control:**

- 1 In the **WebExtSample.xml** file, within the **Control** element defined for the **WebExtBook** test object class, add the following **Filter** element:

```
<Filter>
  <Learn learn_control="Yes" learn_children="CallFilterFunc"
    type="javascript" function="GetChildrenToLearn" />
</Filter>
```

This instructs QuickTest to learn **WebExtUsedBooks** test objects when learning their parent Web pages, and to call the JavaScript function **GetChildrenToLearn** to determine which children to learn. The JavaScript function returns a `SafeArray` of the controls descendants that should be learned with the control.

---

**Note:** You can modify the **WebExtSample.xml** file in the toolkit support set folder and then later deploy it to QuickTest for testing, or you can modify **<QuickTest installation folder>**  
`\dat\Extensibility\Web\Toolkits\WebExtSample\WebExtSample.xml` directly.

---

- 2 In the WebExtUsedBooks.js file, add the following functions:

```
// Learn filtering
// This function instructs QuickTest which child objects of a UsedBooksTable
// should be learned with the object is learned.


function GetChildrenToLearn()
{ // Return all of the radio buttons in the used books table
  return toArray(GetTableElem().getElementsByTagName("input"));
}
```

This ensures that only the radio buttons are learned, as planned in the outset of this lesson.

### Deploying and Testing the Toolkit Support Set

After defining the filter to customize learning children, you deploy the updated toolkit support set to QuickTest and test it.

**To test the support for learning the WebExtUsedBooks test object without its children:**

- 1 Make sure that your most updated files are located in **<QuickTest installation folder>\dat\Extensibility\Web\Toolkits\WebExtSample**.
- 2 Close and reopen QuickTest. Select the check box for **WebExtSample** in the Add-in Manager dialog box and click **OK**. QuickTest opens and loads the support you designed.
- 3 Close and rerun the sample control from **Start > Programs > QuickTest Professional > Extensibility > Samples > Web Add-in Extensibility Book Sample**. Click **Used**.
- 4  Open a test and open the Object Repository. Use the **Add Objects to Local** button in the Object Repository dialog box to learn the Web page that contains the Used Books control. The Define Object Filter dialog box opens.
- 5 Select **All object types** and click **OK**. The WebExtUsedBooks object named **The History of QuickTest** is added to the object repository, as is the SelUsedBook radio button group. However, none of the other element contained in the control are learned.

## Stage 6: Implementing Support for Recording on the Used Books Control

In this section, you implement support for recording on the Used Books control.

- 1 In the **WebExtSample.xml** file, and the following **Record** element within the **Control** element that defines the **WebExtUsedBooks** class:

```
<Record>
  <EventListening use_default_event_handling_for_children="false"
                use_default_event_handling="false"
                type="javascript" function="ListenToEvents"/>
</Record>
```

This instructs QuickTest not to use the default Web Event Configuration to record events on the Used Books control, but to call the **ListenToEvents** JavaScript function instead.

In the **WebExtUsedBooks.js** file add the **ListenToEvents** JavaScript function:

```
function ListenToEvents( elem )
{
  // Connect to the "Select" event:
  //When "Select" is clicked, call OnSelectUsedBooksClicked.
  _util.RegisterForEvent
    ( _elem.children[2], "onclick", "OnSelectUsedBooksClicked" );
  return true;
}
```

This function registers QuickTest to listen to clicks on the Select link, and call the appropriate event handler when the event occurs.

- 2 In the **WebExtUsedBooks.js** file add the **OnSelectUsedBooksClicked** event handling JavaScript function:

```
function OnSelectUsedBooksClicked( handlerParam , eventObj )
{
    var arr = new Array();
    var booksCount = BookCount();
    // Find the index of the selected radio button and record a step that runs the
    // SelectBook test object method with that index
    var BookIndex = -1;
    for( var i = 0 ; i < booksCount ; i++ )
    {
        if( _elem.rows[2+i].cells[0].children[0].status == true )
        { // This is the selected item
            arr[0] = i+1;
            _util.Record( "SelectBook", toSafeArray(arr) , 0 );
            _util.LogLine("SelectBook Recorded",1);
            break;
        }
    }
    return true;
}
```

This function checks which book's radio button is selected, and instructs QuickTest to record a step selecting that book (and add the relevant log message to the Event Viewer).

## Deploying and Testing the Toolkit Support Set

After developing the support for recording on the Used Books control, you deploy the updated toolkit support set to QuickTest and test it.

**To test the support for recording operations performed on the Used Books control:**

- 1 Make sure that your most updated files are located in **<QuickTest installation folder>\dat\Extensibility\Web\Toolkits\WebExtSample**.
- 2 Close and reopen QuickTest. Select the check box for **WebExtSample** in the Add-in Manager dialog box and click **OK**. QuickTest opens and loads the support you designed.

- 3 Close and rerun the sample control from **Start > Programs > QuickTest Professional > Extensibility > Samples > Web Add-in Extensibility Book Sample**. Click **Used**.
- 4 Click the **Record** button or choose **Automation > Record**. In the Used Books table, select one of the radio buttons and then click **Select**.

A new step is added to the test only after you click **Select**:

Item	Operation	Value	Documentation
▼ Action1			
▼ Used Books			
▼ Used Books			
▼ The History of QuickTest	SelectBook	2	Select the radio button for the book with index 2 and click Select.

Click the **Stop** button or choose **Automation > Stop** to end the recording session.

The Book custom control is now fully supported, according to the specifications you decided on when planning your custom support.

## Lesson Summary

In this lesson you created a test object class, `WebExtUsedBooks`, that extends the `WebTable` test object class. You created support for the Used Books control, enabling QuickTest to recognize it as an `WebExtUsedBooks` test object.

- ▶ You learned to understand more options in the toolkit configuration file.
- ▶ You learned to implement the support using more complex JavaScript functions and specifying their location in the toolkit configuration file.

### Where Do You Go from Here?

Now that you have performed the lessons in this tutorial, you are ready to apply the Web Add-in Extensibility concepts and the skills you learned to creating your own custom toolkit support.

For more information on the structure and content of a toolkit support set, see “Developing Support for Your Toolkit” on page 59.

For more information on the structure and content of the test object configuration file, see the *QuickTest Test Object Schema Help* (available with the Web Add-in Extensibility SDK online Help).

For more information on the structure and content of the toolkit configuration file, see the *QuickTest Web Add-in Extensibility Toolkit Configuration Schema Help* (available with the Web Add-in Extensibility SDK online Help).

For more information on the `_util` utility object methods, see the *QuickTest Web Add-in Extensibility API Reference* (available with the Web Add-in Extensibility SDK online Help).

---

# Index

## A

- Add-in Manager dialog box 101
- Alert API function 74
- API functions 73
  - Alert 74
  - LogLine 74
  - Record 74, 97
  - RegisterForEvent 74, 97
  - Report 74
  - toSafeArray 73
- ASP .NET AJAX controls
  - support for 32, 60
  - support Help file 32

## B

- base class 66
- base element 66

## C

- checklist 54, 57
  - example 116, 155
- CommonIdentification XML element 75
- Condition XML element 75, 77
  - examples 79
- Conditions XML element 75, 77
  - examples 79
- Control XML element 71
- conventions. *See* typographical conventions
- custom toolkit support
  - activating 102
  - debugging 84
  - deploying 102
  - filtering learned child controls 95
  - for identification properties 92
  - for recording 97

- for test object methods 86
- implementing 61
- log messages 84
- modifying 103
- new test object classes 63
- planning 51
  - planning checklist 54, 57
    - example 116, 155
  - planning for toolkit 53
  - planning per control 54
  - removing 103
  - testing 81
- custom toolkit support set. *See* toolkit support set

## D

- deploy toolkit support 102
- Dynamic List of Values 89

## E

- \_elem 73
- EventListening XML element 97
- Extensibility
  - example 22, 32
  - file locations 102
  - implementing 61
  - introduction 17
  - when to use 20
  - workflow 28
- Extensibility SDK
  - install 31, 33
  - repair installation 40
  - uninstall 45

## F

Filter XML element 95

## G

get\_list\_of\_values function 89  
get\_property\_values function 92

## H

Help file, in toolkit support set 70  
HP Software Web site 13

## I

IControllImplUtils interface 73  
identification properties 19  
    support for 92  
Identification XML element 75, 77  
    examples 79

## J

JavaScript functions 73

## K

Knowledge Base 12

## L

Learn XML element 95  
logical\_name identification property 93  
LogLine API function 74

## M

Mercury Customer Support Web site 12  
Mercury Tours 12

## O

Object Model Reference, for supported  
    environment 70  
online documentation 10  
online resources 12  
Operation XML element 86

## P

planning checklist 54, 57  
    example 116, 155  
properties. *See* identification properties

## R

Readme 10  
Record API function 74, 97  
Record XML element 97  
recording 20  
    support for 97  
RegisterForEvent API function 74, 97  
Report API function 74  
Run XML element 86

## S

samples, locating and using 32  
Send Feedback 13  
support *See* custom toolkit support

## T

test object class  
    extend existing 66  
    identifying when to use 75  
    mapping to Web element 71, 75  
test object classes 18  
    merging definitions 68  
test object configuration file 63  
test object identification properties. *See*  
    identification properties  
test object methods 19  
    providing list of values for argument  
        89  
    support for 86  
test object model, supporting 63  
test object name, customizing 93  
test object names 19  
test object properties. *See* identification  
    properties  
toolkit configuration file 71



- toolkit support set 61
  - Help file 70
  - JavaScript functions 73
  - test object configuration file 63
  - toolkit configuration file 71
- toolkit support set *See also* custom toolkit support
- toSafeArray API function 73
- tutorial
  - advanced 147
  - basic 107
- typographical conventions 14

## U

- \_util 73
- utility interface 73
- utility object 73

## W

- Web element, mapping to test object
  - class 71, 75
- workflow 28
- Working with Web Add-in Extensibility 15

