

HP QuickTest Professional

Software Version: 9.5

Installation Guide

Manufacturing Part Number: T6513-90031

Document Release Date: January 2008

Software Release Date: January 2008



Legal Notices

Warranty

The only warranties for HP products and services are set forth in the express warranty statements accompanying such products and services. Nothing herein should be construed as constituting an additional warranty. HP shall not be liable for technical or editorial errors or omissions contained herein.

The information contained herein is subject to change without notice.

Restricted Rights Legend

Confidential computer software. Valid license from HP required for possession, use or copying. Consistent with FAR 12.211 and 12.212, Commercial Computer Software, Computer Software Documentation, and Technical Data for Commercial Items are licensed to the U.S. Government under vendor's standard commercial license.

Third-Party Web Sites

HP provides links to external third-party Web sites to help you find supplemental information. Site content and availability may change without notice. HP makes no representations or warranties whatsoever as to site content or availability.

Copyright Notices

© 1992 - 2008 Hewlett-Packard Development Company, L.P.

Trademark Notices

Adobe® and Acrobat® are trademarks of Adobe Systems Incorporated.

Intel®, Pentium®, and Intel® Xeon™ are trademarks of Intel Corporation in the U.S. and other countries.

Java™ is a US trademark of Sun Microsystems, Inc.

Microsoft®, Windows®, Windows NT®, and Windows® XP are U.S registered trademarks of Microsoft Corporation.

Oracle® is a registered US trademark of Oracle Corporation, Redwood City, California.

Unix® is a registered trademark of The Open Group.

SlickEdit® is a registered trademark of SlickEdit Inc.

Documentation Updates

This manual's title page contains the following identifying information:

- Software version number, which indicates the software version
- Document release date, which changes each time the document is updated
- Software release date, which indicates the release date of this version of the software

To check for recent updates, or to verify that you are using the most recent edition of a document, go to:

http://ovweb.external.hp.com/lpe/doc_serv/

Support

You can visit the HP Software Support Web site at: **www.hp.com/go/hpsoftwaresupport**

HP Software online support provides an efficient way to access interactive technical support tools. As a valued support customer, you can benefit by using the support site to:

- Search for knowledge documents of interest
- Submit and track support cases and enhancement requests
- Download software patches
- Manage support contracts
- Look up HP support contacts
- Review information about available services
- Enter into discussions with other software customers
- Research and register for software training

Most of the support areas require that you register as an HP Passport user and sign in. Many also require a support contract. To find more information about access levels, go to:

http://h20230.www2.hp.com/new_access_levels.jsp

To register for an HP Passport ID, go to:

<http://h20229.www2.hp.com/passport-registration.html>

Table of Contents

Welcome to This Guide	7
How This Guide Is Organized	8
Who Should Read This Guide	8
QuickTest Professional Online Documentation	9
Additional Online Resources.....	11
Typographical Conventions.....	12
Chapter 1: Before You Install	13
Setting Required Access Permissions.....	14
Chapter 2: Setting Up QuickTest Professional	17
Understanding the QuickTest Professional Setup for Different License Types	18
Installing QuickTest Professional	20
Working with the Additional Installation Requirements Utility	36
Browsing the QuickTest Professional Program Folder	45
Setting Up a Silent Installation	46
Chapter 3: Working with QuickTest Professional Licenses	53
Understanding QuickTest License Types	54
Requesting a Seat License Key	56
Installing a Seat License Key	57
Working with a Concurrent License	63
Modifying License Information	68
Setting the LSHOST or LSFORCEHOST Variable.....	70
Working with Commuter Licenses	72
Validating QuickTest Licenses.....	84
Chapter 4: Maintaining and Uninstalling QuickTest Professional	89
Installing and Uninstalling Specific QuickTest Professional Features	90
Repairing Your QuickTest Professional Installation	92
Uninstalling QuickTest Professional	93
Saving and Restoring Your QuickTest Settings	95

Table of Contents

Welcome to This Guide

Welcome to the HP QuickTest Professional Installation Guide. This guide describes how to install and set up QuickTest Professional on a standalone computer.

This chapter includes:

- How This Guide Is Organized on page 8
- Who Should Read This Guide on page 8
- QuickTest Professional Online Documentation on page 9
- Additional Online Resources on page 11
- Typographical Conventions on page 12

How This Guide Is Organized

This guide contains the following chapters:

Chapter 1 Before You Install

Lists the system requirements and access permissions required to install and run QuickTest Professional.

Chapter 2 Setting Up QuickTest Professional

Describes how to install QuickTest on a local computer, and how to set up and run a silent installation procedure.

Chapter 3 Working with QuickTest Professional Licenses

Describes the different license types and how to install them. It also describes how to use the commuter license mechanism.

Chapter 4 Maintaining and Uninstalling QuickTest Professional

Describes how to uninstall QuickTest, how to uninstall and install specific QuickTest features, and how to repair an existing installation.

Who Should Read This Guide

This guide is intended for users who need to install and set up QuickTest Professional.

Readers of this guide should have some knowledge of system administration.

QuickTest Professional Online Documentation

QuickTest Professional includes the following online documentation:

Readme provides the latest news and information about QuickTest. Choose **Start > Programs > QuickTest Professional > Readme**.

QuickTest Professional Installation Guide explains how to install and set up QuickTest. Choose **Help > Printer-Friendly Documentation > HP QuickTest Professional Installation Guide**.

QuickTest Professional Tutorial teaches you basic QuickTest skills and shows you how to design tests for your applications. Choose **Help > HP QuickTest Professional Tutorial**.

Product Feature Movies provide an overview and step-by-step instructions describing how to use selected QuickTest features. Choose **Help > Product Feature Movies**.

Printer-Friendly Documentation displays the complete documentation set in Adobe portable document format (PDF). Online books can be viewed and printed using Adobe Reader, which can be downloaded from the Adobe Web site (<http://www.adobe.com>). Choose **Help > Printer-Friendly Documentation**.

QuickTest Professional Help includes:

- ▶ **What's New in QuickTest Professional** describes the newest features, enhancements, and supported environments in the latest version of QuickTest.
- ▶ **QuickTest User's Guide** describes how to use QuickTest to test your application.
- ▶ **QuickTest for Business Process Testing User's Guide** provides step-by-step instructions for using QuickTest to create and manage assets for use with Business Process Testing.
- ▶ **QuickTest Professional Add-ins Guide** describes how to work with supported environments using QuickTest add-ins, and provides environment-specific information for each add-in.

- ▶ **QuickTest Object Model Reference** describes QuickTest test objects, lists the methods and properties associated with each object, and provides syntax information and examples for each method and property.
- ▶ **QuickTest Advanced References** contains documentation for the following QuickTest COM and XML references:
 - ▶ **QuickTest Automation** provides syntax, descriptive information, and examples for the automation objects, methods, and properties. It also contains a detailed overview to help you get started writing QuickTest automation scripts. The automation object model assists you in automating test management, by providing objects, methods and properties that enable you to control virtually every QuickTest feature and capability.
 - ▶ **QuickTest Test Results Schema** documents the test results XML schema, which provides the information you need to customize your test results.
 - ▶ **QuickTest Test Object Schema** documents the test object XML schema schema, which provides the information you need to extend test object support in different environments.
 - ▶ **QuickTest Object Repository Schema** documents the object repository XML schema, which provides the information you need to edit an object repository file that was exported to XML.
 - ▶ **QuickTest Object Repository Automation** documents the Object Repository automation object model, which provides the information you need to manipulate QuickTest object repositories and their contents from outside of QuickTest.
- ▶ **VBScript Reference** contains Microsoft VBScript documentation, including VBScript, Script Runtime, and Windows Script Host.

To access the QuickTest Professional Help, choose **Help > QuickTest Professional Help**. You can also access the QuickTest Professional Help by clicking in selected QuickTest windows and dialog boxes and pressing F1. Additionally, you can view a description, syntax, and examples for a QuickTest test object, method, or property by placing the cursor on it and pressing F1.

Additional Online Resources

Mercury Tours sample Web site is the basis for many examples in this guide. The URL for this Web site is newtours.demoaut.com.

Knowledge Base opens directly to the Knowledge Base landing page on the Mercury Customer Support Web site. Choose **Help > Knowledge Base**. The URL for this Web site is support.mercury.com/cgi-bin/portal/CSO/kbBrowse.jsp.

Customer Support Web site accesses the HP Software Support Web site. This site enables you to browse the Support Knowledge Base and add your own articles. You can also post to and search user discussion forums, submit support requests, download patches and updated documentation, and more. Choose **Help > Customer Support Web site**. The URL for this Web site is www.hp.com/go/hpssoftwaresupport.

Most of the support areas require that you register as an HP Passport user and sign in. Many also require a support contract.

To find more information about access levels, go to:
http://h20230.www2.hp.com/new_access_levels.jsp

To register for an HP Passport user ID, go to:
<http://h20229.www2.hp.com/passport-registration.html>

Send Feedback enables you to send online feedback about **QuickTest Professional** to the product team. Choose **Help > Send Feedback**.

HP Software Web site accesses the HP Software Web site. This site provides you with the most up-to-date information on HP Software products. This includes new software releases, seminars and trade shows, customer support, and more. Choose **Help > HP Software Web site**. The URL for this Web site is www.hp.com/go/software.

Typographical Conventions

This guide uses the following typographical conventions:

UI Elements and Function Names	This style indicates the names of interface elements on which you perform actions, file names or paths, and other items that require emphasis. For example, “Click the Save button.” It also indicates method or function names. For example, “The wait_window statement has the following parameters:”
<i>Arguments</i>	This style indicates method, property, or function arguments and book titles. For example, “Refer to the <i>HP User’s Guide</i> .”
<Replace Value>	Angle brackets enclose a part of a file path or URL address that should be replaced with an actual value. For example, <MyProduct installation folder>\bin .
Example	This style is used for examples and text that is to be typed literally. For example, “Type Hello in the edit box.”
CTRL+C	This style indicates keyboard keys. For example, “Press ENTER.”
[]	Square brackets enclose optional arguments.
{ }	Curly brackets indicate that one of the enclosed values must be assigned to the current argument.
...	In a line of syntax, an ellipsis indicates that more items of the same format may be included. In a programming example, an ellipsis is used to indicate lines of a program that were intentionally omitted.
	A vertical bar indicates that one of the options separated by the bar should be selected.

1

Before You Install

Welcome to HP QuickTest Professional, the advanced keyword-driven testing solution for functional test and regression test automation. QuickTest Professional is part of HP Quality Center. This guide describes everything you need to know to install QuickTest Professional on a standalone computer.

Before you install QuickTest Professional, confirm that your computer meets all system requirements. For details, see the *HP QuickTest Professional Readme*. For the most updated listing of supported system configurations, visit www.hp.com/go/QTP_SysReq.

In addition, you should ensure before you install QuickTest that your computer is not in a state that requires a restart. If this is the case, the installation will not run.

Important: If you are upgrading to QuickTest Professional 9.5, you need to first uninstall your previous version of QuickTest Professional. The Save and Restore Settings utility enables you to save existing customization settings and registry keys before you uninstall an old QuickTest version, and then restore them after you install a new version. For more information, see “Saving and Restoring Your QuickTest Settings” on page 95.

This chapter includes:

- ▶ Setting Required Access Permissions on page 14

Setting Required Access Permissions

You must make sure the following access permissions are set in order to install and run QuickTest Professional.

Permissions Required to Install QuickTest Professional

You must have administrator permissions on the computer on which you are installing QuickTest. You must not run any other installation at the same time as you run the QuickTest Professional installation.

Note: In some circumstances, the installation may require a system restart. If a computer restart is required, your administrator permissions must include the part of the installation that occurs after the restart.

Permissions Required to Run QuickTest Professional

You must have the following file system permissions:

- ▶ Full read and write permissions for all the files and folders under the folder in which QuickTest is installed
- ▶ Full read and write permissions to the Temp folder
- ▶ Read permissions to the Windows folder and to the System folder

You must have the following registry key permissions:

- ▶ Full read and write permissions to all the keys under **HKEY_CURRENT_USER\Software\Mercury Interactive**
- ▶ Read and Query Value permissions to all the **HKEY_LOCAL_MACHINE** and **HKEY_CLASSES_ROOT** keys

Permissions Required When Working with Quality Center

You must have the following permissions to use QuickTest with Quality Center:

- Full read and write permissions to the Quality Center cache folder
- Full read and write permissions to the QuickTest Add-in for Quality Center installation folder

2

Setting Up QuickTest Professional

When you install QuickTest, you must know which type of installation you want to run. A **Typical** installation installs QuickTest and the Web, Visual Basic, and ActiveX Add-ins only. A **Custom** installation enables you to select which additional QuickTest Professional features and add-ins to install. For more information on add-ins, see the *HP QuickTest Professional Add-ins Guide*.

You must also know which type of license you want to install. A **Seat** license is a permanent license that is specific to the computer on which it is installed, and a **Concurrent** license is a per session license that is available only if your company has an HP Functional Testing Concurrent License Server. For more information, see “Understanding the QuickTest Professional Setup for Different License Types” on page 18.

Your QuickTest Professional 9.5 license enables all QuickTest features, including the use of all QuickTest add-ins. You can use the latest released version of all QuickTest add-ins with QuickTest Professional. If upgrading from a previous version, only previously licensed add-ins will be available.

You can also set up QuickTest to install silently (in the background), and on remote computers.

Note: When you open QuickTest Professional, a silent check for updates to the application is performed in the background. You can check online at any time for available updates to QuickTest by choosing **Start > Programs > QuickTest Professional > Check for Updates**. You can then choose which updates you want to download and (optionally) install.

This chapter includes:

- ▶ Understanding the QuickTest Professional Setup for Different License Types on page 18
- ▶ Installing QuickTest Professional on page 20
- ▶ Working with the Additional Installation Requirements Utility on page 36
- ▶ Browsing the QuickTest Professional Program Folder on page 45
- ▶ Setting Up a Silent Installation on page 46

Understanding the QuickTest Professional Setup for Different License Types

The general procedures for installing QuickTest Professional and activating a license differ for the various license types: **Seat**, and **Concurrent**. This section summarizes the procedures required for the different license types and directs you to the detailed information for each step.

Setting Up QuickTest Professional with a Seat License

This section summarizes the procedure for setting up QuickTest Professional with a seat license. A seat license is a permanent license that is specific to the computer on which it is installed. The seat license includes a 14-day demo period during which you must contact HP to obtain a permanent seat license key.

Note: Seat licenses are not available for Windows 2000 server and Windows 2003 server.

To set up QuickTest Professional with a seat license:

- 1** Run the QuickTest Professional setup program. Select **Run License Installation Wizard** in the Additional Installation Requirements screen. Then, in the License Type screen, select **Seat**. For more information, see step 14 of “Installing QuickTest Professional” on page 32.
- 2** Run QuickTest Professional. Click **Install License** on the displayed warning message and run the first part of the license installation wizard to generate your computer’s locking code. For more information, see step 1 of “Requesting a Seat License Key” on page 56.
- 3** Submit the locking code to request your license code, according to the instructions included with your package. For more information, contact your HP Functional Testing products supplier or Customer Support. You will receive your license key via e-mail.
- 4** After you receive the license code from HP, run the license installation wizard to enter your license code to activate your license. For more information, see “Installing a Seat License Key” on page 57.

Setting Up QuickTest Professional with a Concurrent License

This section summarizes the procedure for setting up QuickTest Professional with a concurrent license. A concurrent license is a per session license that is available only if your company has an HP Functional Testing Concurrent License Server, your computer has access to that server, and a free concurrent license is available for your use.

To set up QuickTest Professional with a concurrent license:

- 1** Install the HP Functional Testing Concurrent License Server on a network computer and activate the HP Functional Testing Concurrent License Server license. For more information, see the *HP Functional Testing Concurrent License Server Installation Guide*. This guide is installed on the computer where the HP Functional Testing Concurrent License Server is installed, and is called **MerLicSvr.pdf**.
- 2** Run the QuickTest Professional setup program on each client computer. In the License Type screen, select **Concurrent License**. For more information, see step 14 of “Installing QuickTest Professional” on page 32.

- 3 Begin using QuickTest Professional. When QuickTest Professional opens, it automatically searches for the specified license server and connects to it.

Note: If your computer cannot find and connect to the license server, you may need to set the LSHOST or LSFORCEHOST variable. For more information, see “Setting the LSHOST or LSFORCEHOST Variable” on page 70.

Installing QuickTest Professional

Your QuickTest Professional DVD includes an installation program that guides you through the installation process.

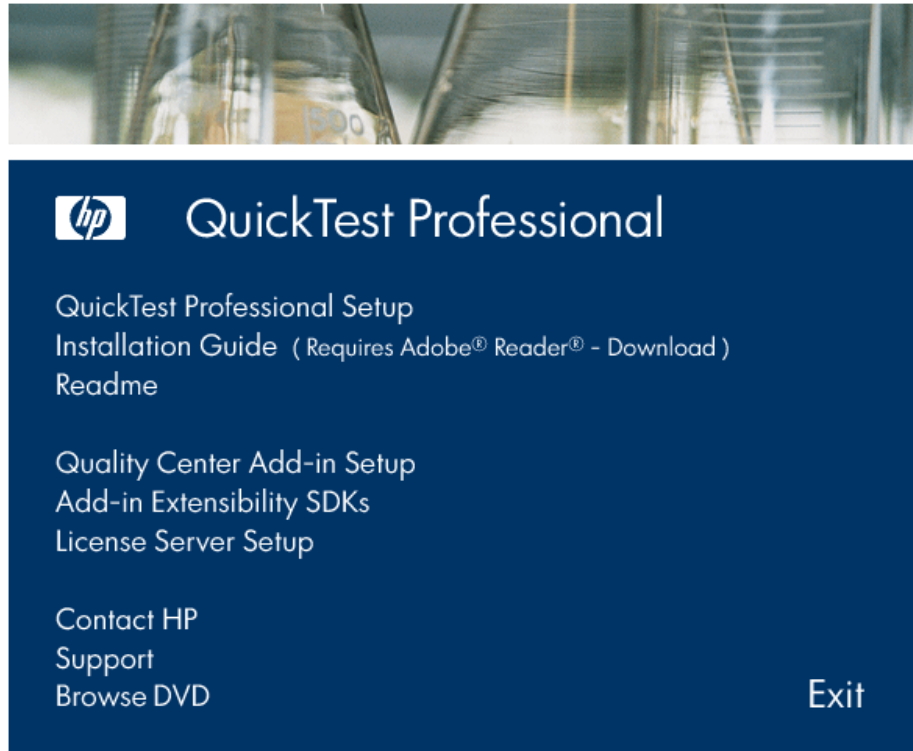
You must be logged on with Administrator privileges to install QuickTest Professional. In addition, you must install QuickTest Professional on a local drive and not on a network drive.

Note: If you have Astra QuickTest and/or Astra LoadTest installed, you must uninstall them before installing QuickTest Professional. After you install QuickTest Professional, you can then reinstall your other HP products.

To install QuickTest Professional:

- 1 Close any instances of QuickTest Professional. It is also recommended to close all other open applications.
- 2 Insert the QuickTest Professional installation DVD into the DVD drive. If the DVD drive is on your local computer, the QuickTest Professional Setup window opens.

If you are installing from a network drive, double-click **setup.exe** in the root folder of the DVD. The Setup window opens.



- To open a PDF copy of the *HP QuickTest Professional Installation Guide*, which is suitable for printing, click **Installation Guide**.
- To view the Readme file, click **Readme**.
- To enable the Quality Center (formerly TestDirector) client installed on your computer to work with QuickTest tests that are saved in Quality Center, click **Quality Center Add-in Setup**.

After you install this add-in, you will be able to work with QuickTest Professional tests in Quality Center. You will also be able to run tests and view the test results in Quality Center.

Refer to the QuickTest Professional Add-in screen (accessible from the main Quality Center screen) for additional information on the QuickTest Professional Add-in for Quality Center.

Note: QuickTest Professional 9.5 supports integration with Quality Center 8.2 Service Pack 1, and Quality Center 9.0 or later. For Business Process Testing, QuickTest Professional 9.5 supports integration only with Quality Center 9.0 or later. You can install the Quality Center Add-in with all currently supported versions of Quality Center. See the *HP QuickTest Professional Readme* for more information about supported versions.

- ▶ To install Add-in Extensibility SDK support for Web, Java, or .NET Windows Forms, click **Add-in Extensibility SDKs** and select the required option.
- ▶ The utilities, features, and information that were available in the **QuickTest Plus Toolkit** in previous versions of QuickTest have been incorporated into the main QuickTest Professional application. These include:
 - ▶ Code and SDK samples, which can now be installed by selecting **Samples** in the Select Features screen during the QuickTest custom installation. For more information, see steps 8 and 9.
 - ▶ Object repository merge functionality, which is now available in the QuickTest Object Repository Merge Tool.
 - ▶ External Action Call Modification utility, which is now handled by the QuickTest Missing Resources pane.
 - ▶ The Register Browser Control utility.
 - ▶ The License Validation utility.

For more information about these utilities and features, and answers to frequently asked questions, see the *HP QuickTest Professional User's Guide* and the *QuickTest Professional Knowledge Base* (<http://support.mercury.com/cgi-bin/portal/CSO/kbBrowse.jsp>).

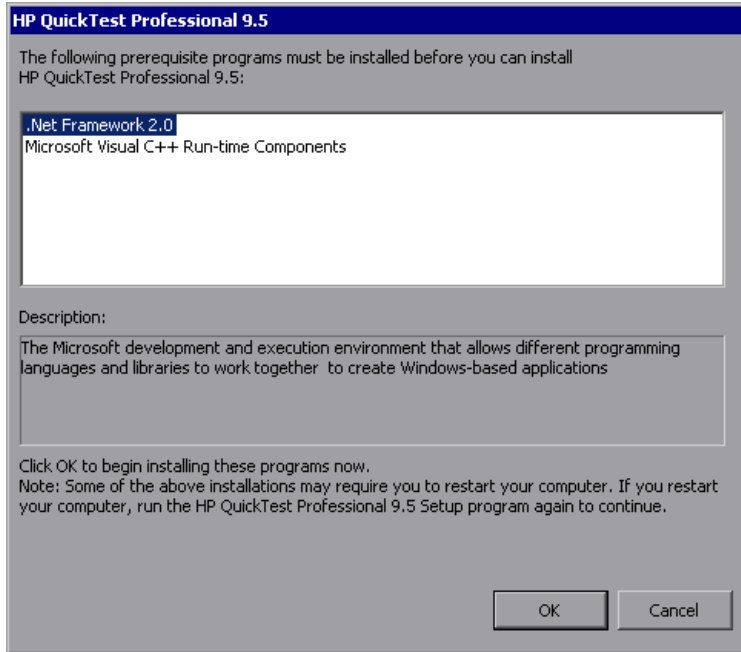
- ▶ To install the HP Functional Testing Concurrent License Server, or to install a concurrent license on the server, click **License Server Setup** and select the required option. From the dialog box that opens you can also open the *HP Functional Testing Concurrent License Server Installation Guide*.
- ▶ To open the contact information page on the HP Web site (<http://h71028.www7.hp.com/enterprise/cache/447066-0-0-0-121.html>), click **Contact HP**.
- ▶ To open the HP Customer Support Web site (<http://www.hp.com/go/hpssoftwaresupport>), click **Support**.
- ▶ To view the contents of the QuickTest Professional DVD, click **Browse DVD**.
- ▶ To exit the QuickTest Professional Setup window, click **Exit**.

- 3** Click **QuickTest Professional Setup** to start the QuickTest Professional Setup program.

Note:

If an earlier version of QuickTest Professional is installed on your computer, the Setup program detects it and prompts you to uninstall your current version and then install QuickTest Professional 9.5. Uninstall your current version of QuickTest Professional. At the end of the uninstall process, restart your computer and install the new version.

- 4 QuickTest requires specific software, for example, .NET Framework 2.0, to be installed before you install QuickTest. If Setup finds that the prerequisite software is not already installed on your computer, the following screen opens.

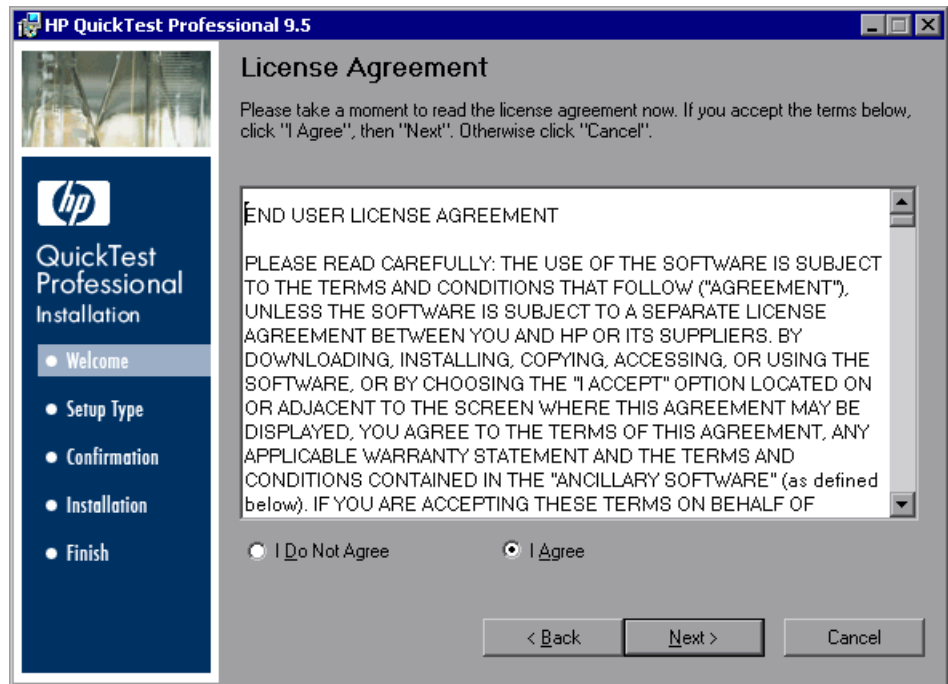


Tip: Select an item in the list to display a description of the program.

Click **OK** and follow the on-screen instructions to install the listed software before continuing with the QuickTest installation. If you click **Cancel**, Setup will stop because QuickTest cannot be installed without the prerequisite software.

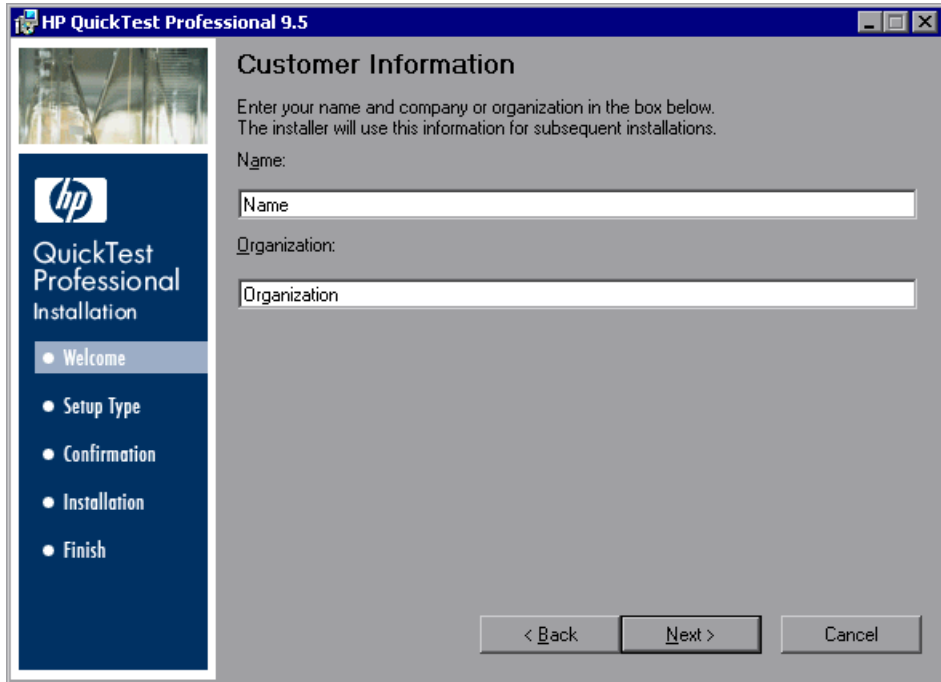
In some situations, you may be prompted to restart your computer after installing the prerequisite software. To continue with the installation after restarting your computer, run the Setup program again.

- 5 The Welcome to the HP QuickTest Professional 9.5 Setup Wizard opens. Click **Next** to proceed.
- 6 The License Agreement screen opens. Read the agreement.



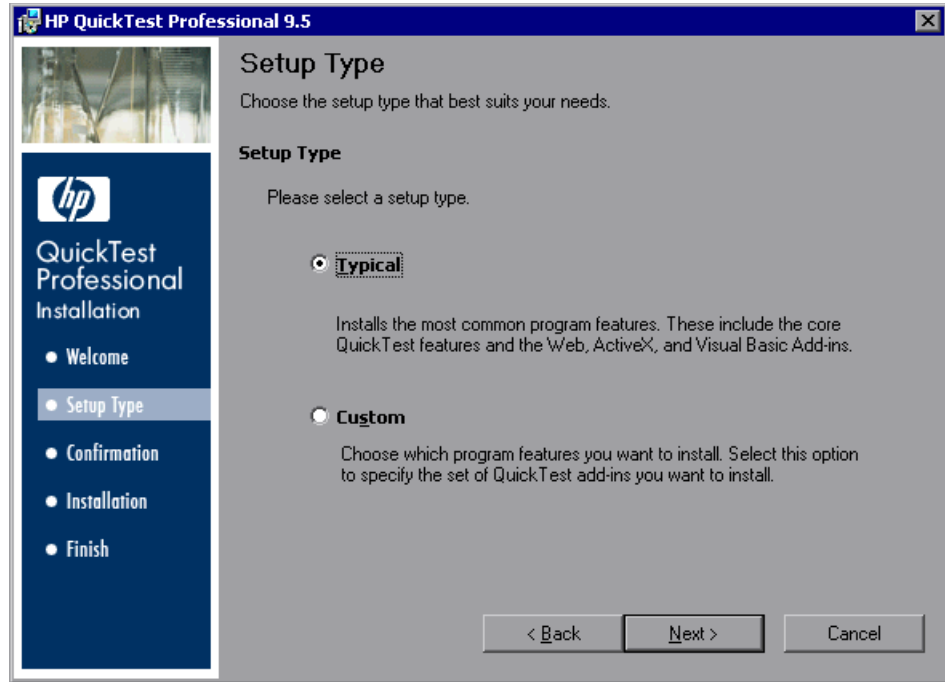
To install QuickTest Professional, you must accept the terms of the license agreement by selecting **I Agree** and clicking **Next**.

- 7 In the Customer Information screen, type your name and the name of your organization.



Click **Next** to proceed.

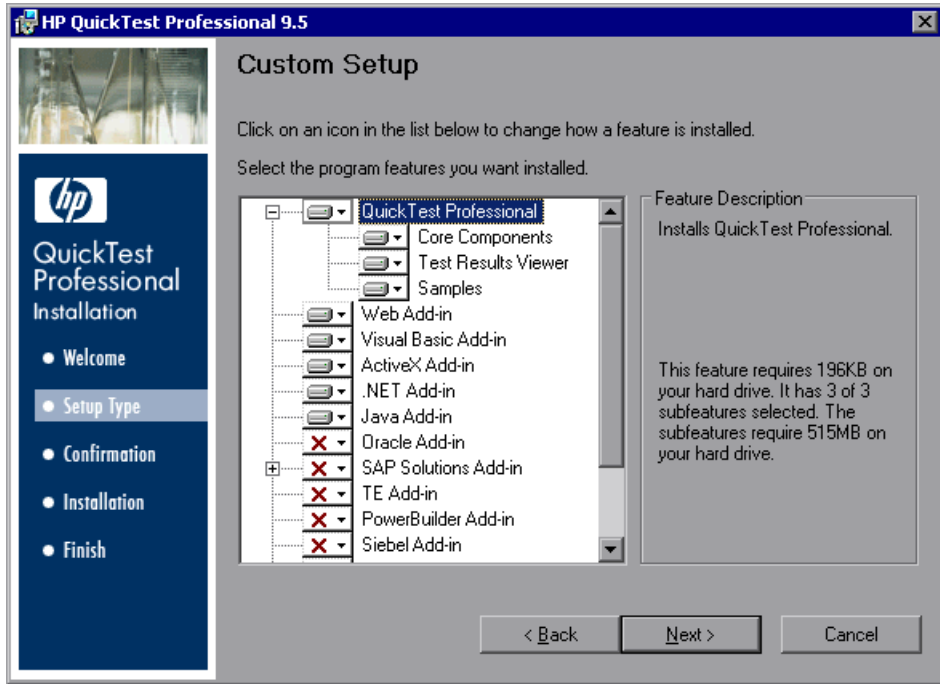
- 8 In the Setup Type screen, select **Typical** or **Custom** installation.
- **Typical** installs the Web, Visual Basic, and ActiveX Add-ins only.
 - **Custom** enables you to select which additional QuickTest Professional features and add-ins to install.



Click **Next** to proceed.

- If you chose the **Typical** installation, proceed to step 10.
- If you chose the **Custom** installation, proceed to step 9.

- 9 In the Custom Setup screen, select the QuickTest components and add-ins you want to install.



Note: Loading QuickTest add-ins enables QuickTest to work with the corresponding environments. You can install the add-ins you require when you install QuickTest Professional, or you can install them at a later time by running the installation again. When QuickTest opens, you can choose which of the installed add-ins you want to load using the QuickTest Professional Add-In Manager dialog box. For more information on the Add-in Manager, see the *HP QuickTest Professional Add-ins Guide*.

You can select an item in the list to see a description of the feature as well as the space requirement for the feature on your drive.

Click on an icon to view a menu and select how that feature is installed on your computer. The following options are available, depending on the feature:



- ▶ **Will be installed on local hard drive.** Installs the selected feature on your local hard drive.



- ▶ **Entire feature will be installed on local hard drive.** Installs the entire selected feature and its sub-features on your local hard drive.



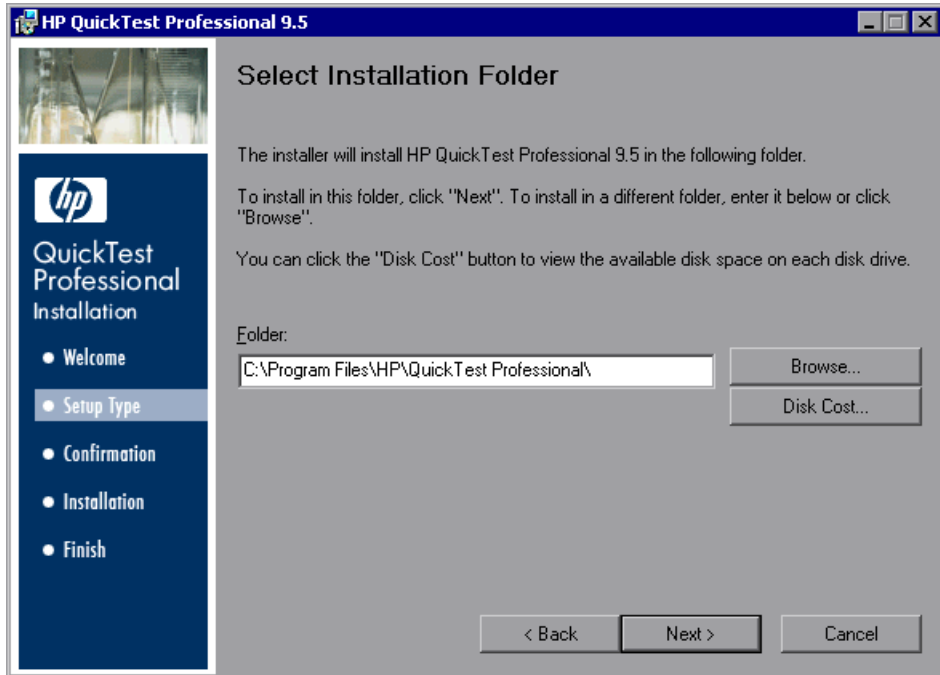
- ▶ **Entire feature will be unavailable.** Excludes the feature from the installation and it is not available in QuickTest.

Notes:

- ▶ **QuickTest Professional**, its **Core Components**, and the **Test Results Viewer** option, cannot be deselected.
- ▶ To work with the QuickTest Professional Java Add-in and the WinRunner Java and/or Oracle Add-in 7.6 on the same computer, you must install the Java/Oracle patch for WinRunner 7.6 (**WR76Patch.exe**, located in the **WR76DualAgentPatch** folder on the QuickTest Professional installation DVD).

Click **Next**.

- 10 In the Select Installation Folder screen, choose the location where you want to install QuickTest Professional.



- To select a different location, click **Browse**, choose a folder, and then click **OK**. You must specify a folder on a mapped drive (not a UNC path). If the destination folder does not exist, the setup program asks if you want it to be created.
- To view the required and available space on each of your mapped drives, click **Disk Cost**.

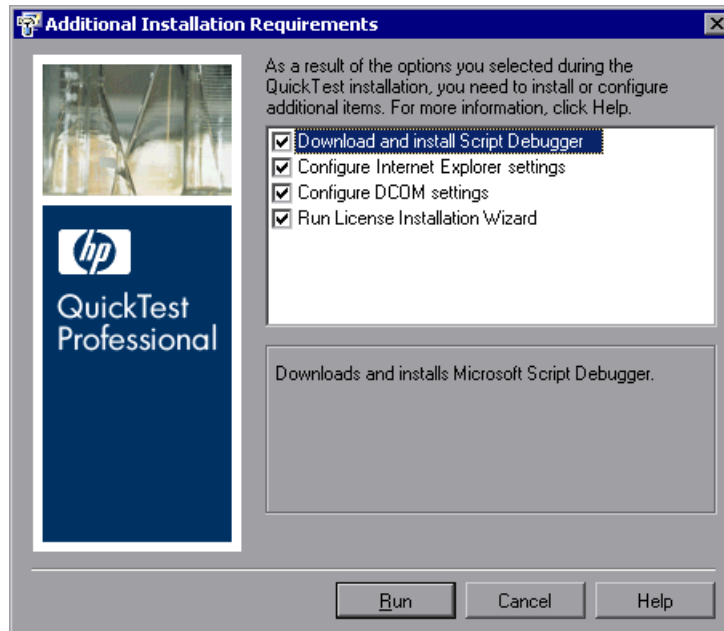
Ensure that you install QuickTest Professional on a drive with a sufficient amount of free disk space. For more information, see the system requirements, as described in the *HP QuickTest Professional Readme*.

Click **Next** to proceed.

- 11 The Confirm Installation screen opens. Click **Next** to proceed, and the installation process begins. The Installing HP QuickTest Professional 9.5 screen displays the progress of the installation.

12 When the installation is complete, click **Finish**.

The Additional Installation Requirements screen opens.

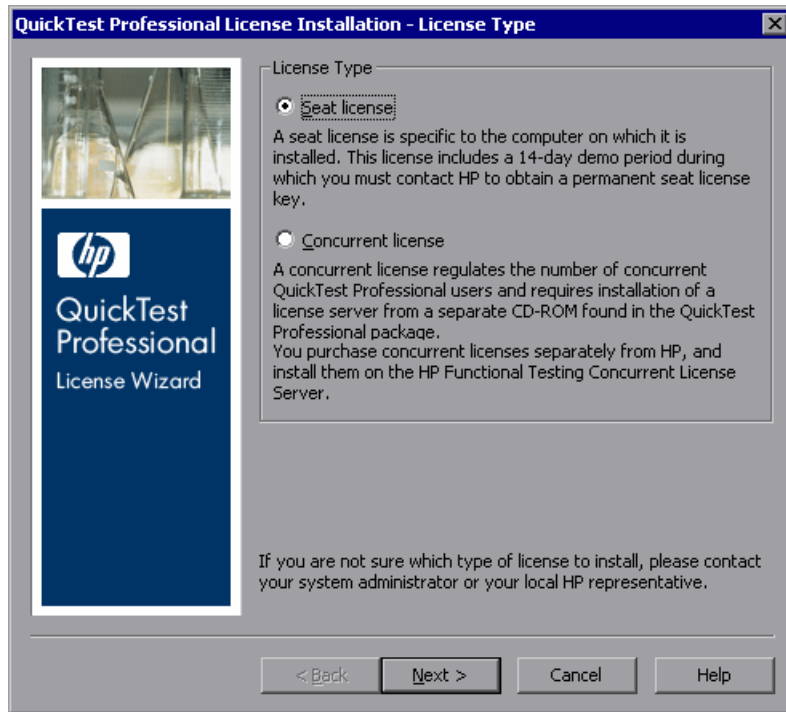


In addition to options to configure Internet Explorer and DCOM settings, and to run the License Wizard, the Additional Installation Requirements screen displays any prerequisite software that must be installed or configured to work with QuickTest, according to the options selected during installation.

Select the required installation options. For more information on these options, see “Working with the Additional Installation Requirements Utility” on page 36.

Tip: Select an option name to display a description of the feature.

- 13 Click **Run** in the Additional Installation Requirements screen to install or configure your selections.
- 14 If you selected to run the **License Installation Wizard**, the QuickTest Professional License Installation - License Type screen opens.



Select a license type. (For information on the process required to set up various license types, see “Understanding the QuickTest Professional Setup for Different License Types” on page 18. For information on working with licenses, see “Working with QuickTest Professional Licenses” on page 53.)

- **Seat license.** Uses a license created for this computer.

A seat license is a permanent license that is specific to the computer on which it is installed. When you select this option, you also get a 14-day demo period during which you must request a seat license key for a permanent license from the HP Customer Service Web site. After you receive the seat license key, you can activate it to work with QuickTest Professional permanently. For more information, see “Requesting a Seat License Key” on page 56.

If you choose **Seat license**, proceed to step 15 on page 34.

- **Concurrent license.** Uses a network-based license.

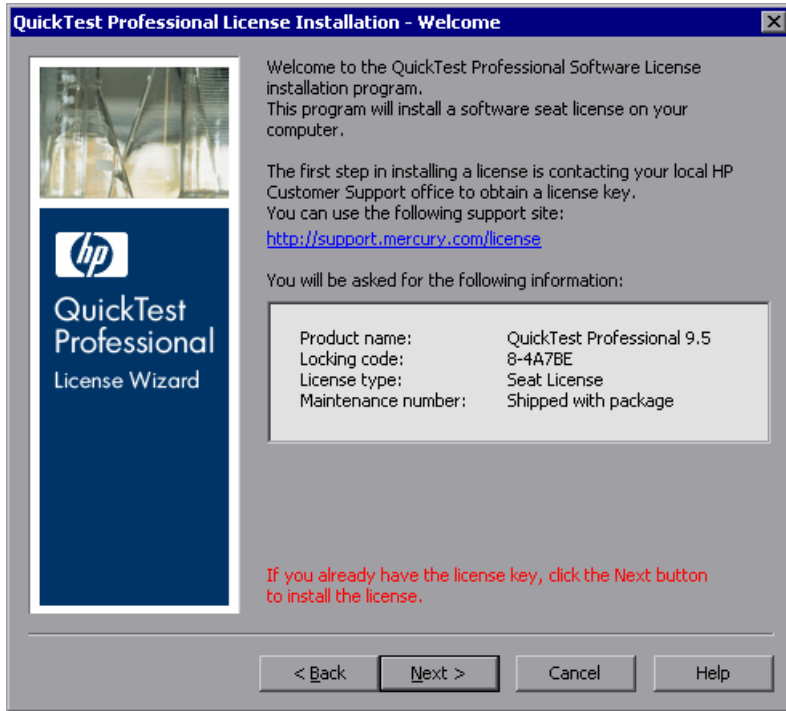
A license server on the network regulates the number of concurrent QuickTest Professional users. You can work with a concurrent license only if a concurrent license server is installed on your local network, and that license server has at least one available license that is not currently in use.

Click **Next** to open the License Installation - Concurrent License Server dialog box and, if you know the name of the concurrent license server to which you want to connect, you can specify it in the text box. You can click **Check Connection** to verify that the license server is accessible from your network.

If you select this option but do not specify a concurrent license server, QuickTest will try to locate one for you when you open QuickTest.

For more information, see the *HP Functional Testing Concurrent License Server Installation Guide*.

- 15 If you chose to install QuickTest with a seat license, the QuickTest Professional License Installation - Welcome screen opens.

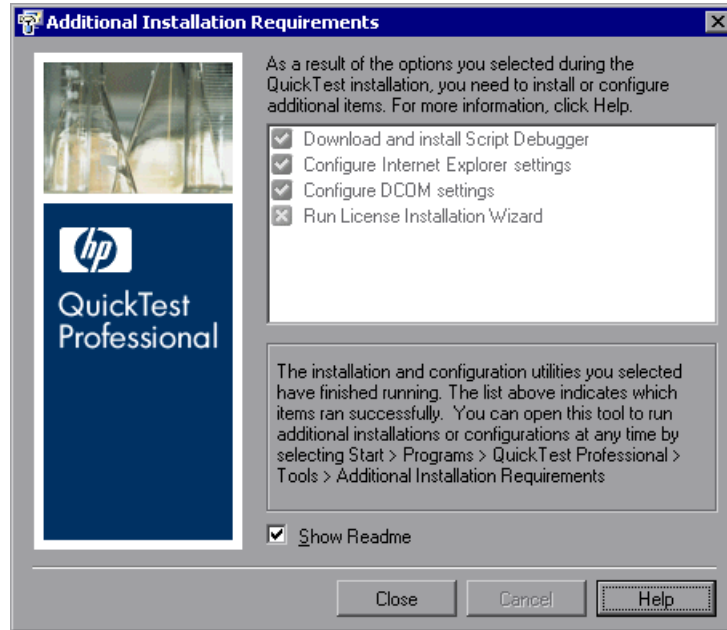


If you have a seat license key code, proceed to step 3 on page 60 to install the seat license.

Otherwise, click **Cancel**. (You will be prompted to install the seat license when you open QuickTest.)

- 16 When the options you selected in the Additional Installation Requirements screen are installed and configured on your computer, the screen reopens.

A checkmark is displayed next to the options that were successfully installed or configured.



Tip: You can run the Additional Installation Requirements utility at any time by choosing **Start > Programs > QuickTest Professional > Tools > Additional Installation Requirements**.

- 17** Click **Show Readme** if you want the *HP QuickTest Professional Readme* to open at the end of the installation.
- 18** Click **Close**. The Installation Complete screen opens.
- 19** Click **Finish**.

Note: In some situations, you may be prompted to restart your computer after you have installed QuickTest. It is recommended that you restart your computer as soon as possible if you are prompted to do so. Delaying the system restart may result in unexpected QuickTest behavior.

Working with the Additional Installation Requirements Utility

Several prerequisites to working with QuickTest must be installed and configured after QuickTest is installed. In addition, to take advantage of QuickTest Professional debugging and remote access features, certain Internet Explorer and DCOM settings need to be configured.

The Additional Installation Requirements screen displays any prerequisite software that must be installed or configured to work with QuickTest, according to the options selected when QuickTest is installed or the installation is modified. For more information, see “Additional Installation Prerequisites” on page 37.

Note: If required, you can configure the Internet Explorer and DCOM settings manually.

The Additional Installation Requirements utility enables you to configure the required settings automatically, and to run the License Installation Wizard and Microsoft Debugger installation during the QuickTest installation.

- ▶ Select an option name in the Additional Installation Requirements dialog box to display a description of the feature.
- ▶ Select the check box of one or more required options and click **Run**.

You can run the Additional Installation Requirements utility at any time by choosing **Start > Programs > QuickTest Professional > Tools > Additional Installation Requirements**. In addition to the options to configure Internet Explorer and DCOM settings, and to run the License Wizard, the dialog box displays any prerequisite software that is still required to be installed to work with QuickTest.

Additional Installation Prerequisites

Additional installation requirements listed in the Additional Installation Requirements dialog box can include the following, according to the options selected when QuickTest is installed or the installation is modified:

- ▶ **Microsoft WSE 3.0 Runtime.** Provides a foundation for running applications based on published Web services specifications. This item is displayed only when not currently installed, and when the Web Services Add-in is installed.
- ▶ **Microsoft SOAP Toolkit 3.0.** Provides Web Services capabilities for COM components and applications. This item is displayed only when not currently installed, and when the Web Services Add-in is installed.
- ▶ **Microsoft Script Debugger.** Provides the debugging environment that QuickTest uses during test runs. This item is displayed only when not currently installed.
- ▶ **Terminal Emulator Wizard.** Provides a wizard that enables you to configure terminal emulator identifying settings. This item is displayed only when the Terminal Emulator (TE) Add-in is installed.
- ▶ **Stingray Wizard.** Provides a wizard that enables you configure QuickTest to work with your Stingray application. This item is displayed only when the Stingray Add-in is installed.

In addition, the Additional Installation Requirements utility enables you to perform the following:

- ▶ **Configure Internet Explorer settings.** Select this check box to automatically configure the Internet Explorer options that enable QuickTest to use the Microsoft Script Debugger application during test runs.

You can configure these options manually before running QuickTest. In Internet Explorer, select **Tools > Internet Options > Advanced**. Then select **Disable script debugging** and **Enable third-party browser extensions**.

- ▶ **Configure DCOM settings.** Select this check box to automatically change DCOM permissions and security settings and open a firewall port on your QuickTest computer.

These changes are only required if you want to run QuickTest tests remotely from Quality Center, and are running QuickTest on Windows XP Service Pack 2 or later, Windows 2003 Server, or Windows Vista.

For more information about the changes that QuickTest makes when you choose to set these options automatically, refer to the steps described in “Modifying DCOM Permissions Manually to Enable Remote QuickTest Execution” on page 39.

If you choose not to automatically set remote execution options during the QuickTest installation, you can, before attempting to remotely run QuickTest tests from Quality Center:

- ▶ Run the Additional Installation Requirements utility at a later time from **Start > Programs > QuickTest Professional > Tools > Additional Installation Requirements**.
- ▶ Make the required changes manually. For more information on making these changes manually, see “Modifying DCOM Permissions Manually to Enable Remote QuickTest Execution” on page 39.
- ▶ Make the required changes automatically, by running the Remote Agent `<QuickTest Professional installation>\bin\AQTRmtAgent.exe` at a later time.

Note: Contact Microsoft Support if you have questions regarding changes in DCOM securities on Windows XP Service Pack 2 or later, Windows 2003 Server, or Windows Vista.

- ▶ **Run License Installation Wizard.** Select this check box to run the QuickTest Professional License Wizard.

Modifying DCOM Permissions Manually to Enable Remote QuickTest Execution

This section describes how to manually change DCOM permissions and open firewall ports to enable remote execution of QuickTest. These changes are only required if you are running QuickTest on Windows XP Service Pack 2, Windows 2003 Server Service Pack 1 or later, or Windows Vista.

If you chose to automatically make these changes during the QuickTest installation, you do not need to make these manual changes. If you do not intend to execute QuickTest tests remotely from Quality Center, you do not need to make these manual changes.

Note: The security changes described in this section should be performed by your System Administrator. Please contact Microsoft Support if you have questions regarding changes in DCOM securities on Windows XP Service Pack 2, Windows 2003 Server Service Pack 1 or later, or Windows Vista.

Tip: The HP Support Knowledge Base provides utilities to assist you in making these changes. For more information, refer to the *QuickTest Professional Knowledge Base* (<http://support.mercury.com/cgi-bin/portal/CSO/kbBrowse.jsp>) and search for Problem ID 43245.

In addition to following the procedures below, before remotely running a test you must also make sure that the **Allow other HP products to run tests and components** option is selected in the Run tab of the QuickTest Options dialog box. For more information, see the *HP QuickTest Professional User's Guide*.

To enable Windows to authenticate the remote user:

- 1** Add both machines to the same domain.
- 2** For domain users logged into both machines, add these domain users to the Local Administrators group on the QuickTest computer. This enables Windows to authenticate the remote user executing the tests against the DCOM objects.

To configure the Windows Firewall to enable port 135 for DCOM:

Note: If you disabled the firewall installed with Windows XP Service Pack 2, Windows 2003 Server, or Windows Vista, you do not need to open port 135 for DCOM, as described in this procedure.

- 1** On the QuickTest computer, choose **Start > Settings > Control Panel > Windows Firewall**. The Windows Firewall dialog box opens.
- 2** Select the **Exceptions** tab.
- 3** Click **Add Program**. The Add a Program dialog box opens.
- 4** Select or browse to the Remote Agent (<**QuickTest Professional installation**>\bin\AQTRmtAgent.exe) and click **OK**.

Note: If you do not configure the Remote Agent as an exception as described above, a Windows Security Alert message will appear while running a test remotely. Click **Unblock** to solve this problem. The next time you remotely execute an automated test, the warning will not appear.

- 5 Click **OK** to close the Windows Firewall dialog box.

Note: For more information, a list of port assignments for commonly-used services can be found at:

http://www.microsoft.com/resources/documentation/Windows/2000/server/reskit/en-us/Default.asp?url=/resources/documentation/windows/2000/server/reskit/en-us/cnet/cnfc_por_SIMW.asp.

To modify DCOM security properties:

- 1 Choose **Start > Run**, type **dcomcnfg**, and press **ENTER**. The Component Services window opens.
- 2 Navigate to **Console Root > Component Services > Computers > My Computer**.

Note: If a Windows Security Alert message opens, click **Ask me later** or **Unblock**.

- 3 Right-click **My Computer** and select **Properties**.
- 4 Select the **Default Properties** tab.
- 5 Make sure the **Default Impersonation Level** is **Identify** and click **Apply**.
- 6 Select the **COM Security** tab.
- 7 In the Access Permissions area, click **Edit Limits**. The Access Permission dialog box opens.
- 8 Click **Add**. The Select Users or Groups dialog box opens.
- 9 Click **Advanced**.
- 10 Click **Locations**. In the displayed dialog box, select your computer name and click **OK**.
- 11 Click **Find Now**.

12 Select the following users and groups from the local machine and click **OK**:

- Administrator
- Administrators
- Authenticated Users
- Anonymous Logon
- Everyone
- Interactive
- Network
- System

13 Add the following users from the domain and click **OK**:

- <domain user logged into the QuickTest computer>
- <domain user logged into the Quality Center computer that is performing the remote execution>

14 In the Access Permission dialog box, assign **Local Access** and **Remote Access** permissions to the groups and users in the list and click **OK**.

15 In the Launch and Activation Permissions area, click **Edit Limits**. The Launch Permission dialog box opens.

16 Repeat steps 8 to 13.

17 In the Access Permission dialog box, assign **Local Launch**, **Remote Launch**, **Local Activation**, and **Remote Activation** permissions to the groups and users in the list and click **OK**.

To configure security settings for the QuickTest Remote Agent DCOM applications:

1 In the Component Services window, navigate to **Console Root > Component Services > Computers > My Computer > DCOM Config**.

2 Right-click the **AQTRmtAgent** item and select **Properties**. The AQTRmtAgent Properties dialog box opens.

3 In the Identity tab, select **The interactive user**. This enables the DCOM application to authenticate the process against the logged-in Windows user and run the process in that security context.

- 4** Select the **Security** tab.
- 5** In the Launch and Activation Permissions area, select **Customize** and click **Edit**. The Launch Permission dialog box opens.
- 6** Click **Add**. The Select Users or Groups dialog box opens.
- 7** Click **Advanced**.
- 8** Click **Locations**. In the displayed dialog box, select your computer name and click **OK**.
- 9** Click **Find Now**.
- 10** Select the following users and groups from the local machine and click **OK**:
 - Administrator
 - Administrators
 - Authenticated Users
 - Anonymous Logon
 - Everyone
 - Interactive
 - Network
 - System
- 11** Add the following users from the domain and click **OK**:
 - <domain user logged into the QuickTest computer>
 - <domain user logged into the Quality Center computer that is performing the remote execution>
- 12** In the Launch Permission dialog box, for all the groups and users in the list, select **Allow** for all permissions and click **OK**.
- 13** In the Access Permissions area, select **Customize** and click **Edit**. The Access Permission dialog box opens.
- 14** Repeat steps 6 to 12.
- 15** Click **Apply** to save the changes and click **OK** to close the dialog box.

- 16 Close the Component Services window.
- 17 You can now remotely execute a QuickTest test from Quality Center.

Note: Before remotely running a test, you must also make sure that the **Allow other HP products to run tests and components** option is selected in the Run tab of the QuickTest Options dialog box. For more information, see the *HP QuickTest Professional User's Guide*.

Modifying User Account Control Settings to Connect with Quality Center on Windows Vista

If you are running QuickTest on Windows Vista, you must disable User Account Control (UAC) before the first time you connect with Quality Center. After you have connected with Quality Center for the first time, you can enable User Account Control (UAC) again if required.

This change is required only if you are running QuickTest on Windows Vista. If you do not intend to execute QuickTest tests remotely from Quality Center, you do not need to make these changes.

Note: The security changes described in this section should be performed by your System Administrator. Please contact Microsoft Support if you have questions regarding changes in User Account Control (UAC) on Windows Vista.

To disable User Account Control (UAC) on Windows Vista:

- 1 Choose **Start > Settings > Control Panel > User Accounts**.
- 2 Click the **Change Security Settings** option.
- 3 Clear the **Use User Account Control (UAC) to help protect your computer** check box.
- 4 Click **OK**.

Browsing the QuickTest Professional Program Folder

After the QuickTest Professional setup process is complete, a number of items are added to your QuickTest Professional program folder (**Start > Programs > QuickTest Professional**).

For a description of each of these items, see the *HP QuickTest Professional User's Guide*.

Note: If you uninstalled a previous version of QuickTest Professional before installing this version, you may have additional (outdated) items in your QuickTest Professional program folder. In addition, if you have QuickTest Professional add-ins installed, you may have items in your program folder that relate specifically to these add-ins.

Setting Up a Silent Installation

A *silent installation* (or *quiet installation*) is an installation that is performed in the background. You can install QuickTest Professional, QuickTest Add-ins, and the Quality Center Add-in silently on your computer, without the need to navigate through setup screens or for user interaction. You can also install QuickTest Professional, QuickTest Add-ins, and the Quality Center Add-in on remote computers.

For more information, see:

- “Before You Install” on page 46
- “Installing QuickTest Silently” on page 48
- “Installing Available QuickTest Features” on page 50
- “Running a Silent Installation Remotely” on page 51

Before You Install

You must have administrator privileges to install QuickTest Professional and the Quality Center Add-in.

The following sections list the prerequisite software that must be installed on your computer before running a silent installation of QuickTest Professional and QuickTest Add-ins.

Prerequisite Software for QuickTest Professional and the QuickTest Add-ins

The following prerequisite software is required to be installed on your computer before you install QuickTest Professional and QuickTest Add-ins. This software is available on the QuickTest installation DVD, in the selected language folder under the **QuickTest** folder.

- .Net Framework 2.0
- Microsoft Visual C++ Run-time Components
- Microsoft Data Access Components 2.8 SP1
- Microsoft Windows Script 5.6 for Windows 2000
- Microsoft MSI 3.1
- In addition, for the .NET Add-in:
 - Microsoft WSE 3.0 Runtime
 - Microsoft SOAP Toolkit 3.0

Prerequisite Software for Quality Center

The following prerequisite software is required to be installed on your computer before you install the Quality Center Add-in. This software is available on the QuickTest installation DVD, in the selected language folder under **QuickTest**.

- .Net Framework 2.0
- Microsoft Visual C++ Run-time Components

Installing QuickTest Silently

You can install QuickTest Professional and QuickTest Add-ins, and the Quality Center Add-in, silently on your computer.

Note: For more information about performing a silent, or quiet, MSI installation, refer to Microsoft documentation.

To perform a silent installation of QuickTest and QuickTest Add-ins:

- 1** It is recommended to save any open files and close all open applications before running the silent installation.
- 2** Install the prerequisite software for QuickTest Professional. For the full list of prerequisite software, see “Before You Install” on page 46. You can begin the silent installation only after all the required prerequisite software is installed.
- 3** Run the Microsoft MSI installation using the **msiexec.exe** command from the command line.
 - ▶ The QuickTest Professional msi files are located on the installation DVD in the **QuickTest\MSI** folder. There is a different msi file for each available language.
 - ▶ Use the **ADDLOCAL** command line option to specify the QuickTest features and add-ins that you want to install, separated by commas. For more information and a list of available features, see “Installing Available QuickTest Features” on page 50.

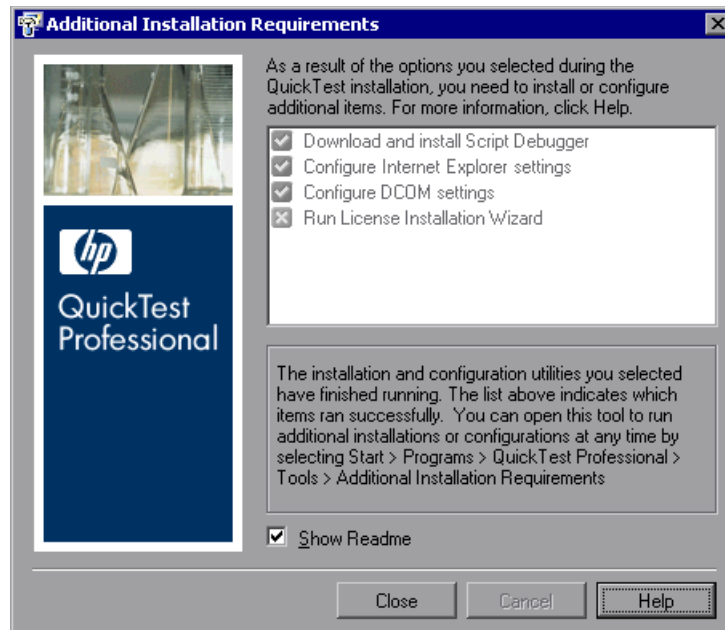
Important: You must include **UpdateService**, **Test_Results_Viewer**, **Web_Add-in**, and **Core_Components**, in the **ADDLOCAL** command.

- 4** After you have installed QuickTest Professional, choose **Start > Programs > QuickTest Professional > Tools > Additional Installation Requirements**.

The Additional Installation Requirements utility that opens lists any additional software you need to use QuickTest, and enables you to install and configure them. For example, you can run the License Installation Wizard and install Microsoft Script Debugger. For more information, see “Working with the Additional Installation Requirements Utility” on page 36.

- 5 Select the required additional installation options in the Additional Installation Requirements dialog box and click **Run**. When the selected options are installed and configured on your computer, the Additional Installation Requirements screen reopens.

A checkmark is displayed next to the options that were successfully installed or configured.



- 6 Click **Show Readme** if you want the *HP QuickTest Professional Readme* to open at the end of the installation.
- 7 Click **Close**.

Installing Available QuickTest Features

You use the ADDLOCAL option in the silent installation command line to specify the QuickTest features and add-ins that you want to install.

To install QuickTest successfully, the following mandatory options must be included in the ADDLOCAL command:

- **Core_Components** (parent: QuickTest_Professional)
- **UpdateService**
- **Test_Results_Viewer** (parent: QuickTest_Professional)
- **Web_Add-in**

Notes:

- **UpdateService** is a hidden feature that enables QuickTest to be updated automatically.
- When installing a feature using the ADDLOCAL command, its parent always gets installed as well.

In addition to the mandatory options, you can install the following QuickTest features and add-ins:

- **.NET_Add-in**
- **ActiveX_Add-in**
- **Java_Add-in**
- **Oracle_Add-in**
- **PeopleSoft_Add-in**
- **PowerBuilder_Add-in**
- **SAP_Solutions_Add-in**
- **SAP_eCATT_integration** (parent: SAP_Solutions_Add-in)
- **Samples** (parent: QuickTest_Professional)

- Siebel_Add-in
- Stingray_Add-in
- TE_Add-in
- VisualAge_Add-in
- Visual_Basic_Add-in
- Web_Services_Add-in

Setting Up a Silent Installation for the Quality Center Add-in

You can use the silent installation mechanism to install the Quality Center Add-in.

You perform a silent installation of the Quality Center Add-in in much the same way you perform a silent QuickTest Professional core installation.

To perform a silent installation of the Quality Center Add-in:

- 1** It is recommended to save any open files and close all open applications before running the silent installation.
- 2** Run the Microsoft MSI installation using the `msiexec.exe` command from the command line.
 - The Quality Center Add-in msi files are located on the installation DVD in the **QCPlugin\MSI** folder. There is a different msi file for each available language.

Running a Silent Installation Remotely

You can run a silent installation of QuickTest remotely. This enables you to install QuickTest on one or more remote computers with the identical installation options and features.

For more information, refer to Microsoft MSI documentation.

To run a silent installation remotely:

- 1** All the prerequisite software for QuickTest Professional must be installed on the remote computers before you run a silent installation. For the full list of prerequisite software, see “Before You Install” on page 46. You can begin the silent installation only after all the required prerequisite software is installed.
- 2** Run the Microsoft MSI quiet installation from the command line.
 - ▶ The QuickTest Professional msi files are located on the installation DVD in the **QuickTest\MSI** folder. There is a different msi file for each available language.
 - ▶ Use the ADDLOCAL command line option to specify the QuickTest features and add-ins that you want to install, separated by commas. For more information and a list of available features, see “Installing Available QuickTest Features” on page 50.

Important: You must include **UpdateService**, **Test_Results_Viewer**, **Web_Add-in**, and **Core_Components**, in the ADDLOCAL command.

- ▶ The Quality Center Add-in msi files are located on the installation DVD in the **QCPlugin\MSI** folder. There is a different msi file for each available language.

3

Working with QuickTest Professional Licenses

You can install QuickTest Professional using a *seat* license (formerly known as a local or standalone license) or a *concurrent* license (formerly known as a floating license).

This chapter includes:

- Understanding QuickTest License Types on page 54
- Requesting a Seat License Key on page 56
- Installing a Seat License Key on page 57
- Working with a Concurrent License on page 63
- Modifying License Information on page 68
- Setting the LSHOST or LSFORCEHOST Variable on page 70
- Working with Commuter Licenses on page 72
- Validating QuickTest Licenses on page 84

Understanding QuickTest License Types

To use QuickTest Professional, you must have a valid license. There are two types of licenses: seat and concurrent. The table below summarizes the differences between the two license types.

Topic	Seat License	Concurrent License
General description	The license is specific to the computer on which it is installed.	Each license entitles the organization to one additional concurrent user.
Number of installations per license key	Each installation of QuickTest Professional requires a distinct license key.	There is no limit to the number of QuickTest Professional installations on the network, but a special concurrent license server regulates the number of computers that can run a copy of QuickTest Professional at any time.
Maintenance number	The license key is based partially on the maintenance number. The maintenance number identifies the customer.	The license key is based partially on the maintenance number. The maintenance number identifies the customer and indicates how many concurrent users the license supports.

Topic	Seat License	Concurrent License
Other issues	<p>The license key is based partially on the locking code, which is a code that identifies the computer on which QuickTest Professional is installed. The supplied license key works only for the computer on which the locking code was generated.</p> <p>Note: A computer with multiple bootable partitions may generate a different locking code for each partition. If a different locking code is generated for a partition, you will need to request a unique license key for it.</p>	<p>Not supported for Unix networks.</p> <p>It is recommended that the concurrent license server has a fixed IP address.</p> <p>QuickTest Professional client computers must have TCP/IP installed.</p> <p>To use concurrent licenses across networks, UDP port 5093 must be open on the server.</p>
Entering license key	<p>At the end of the installation procedure, QuickTest asks you to enter the license key. If you do not have a license key at that point, QuickTest asks you to enter the key the first time you open QuickTest.</p>	<p>Each time QuickTest opens, it automatically searches the same subnet for the concurrent license server. You do not need to enter a license key for your QuickTest client installation.</p>

You can view and copy license information and license validation information, if needed. For example, you may want to retrieve license information for administrative or troubleshooting purposes. For more information, see “Validating QuickTest Licenses” on page 84.

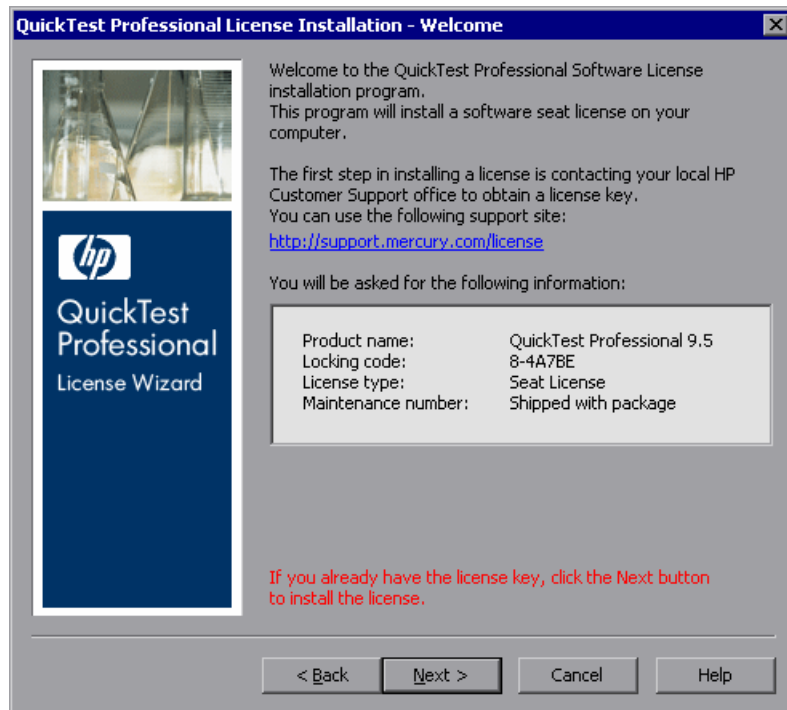
Requesting a Seat License Key

When you install QuickTest Professional with a seat license for the first time, it includes a 14-day demo license. To use QuickTest Professional beyond the 14-day period, you must request and activate a license key for your copy of QuickTest Professional.

To request a seat license key:

- 1 Perform one of the following:
 - From the license warning message displayed when you start QuickTest Professional, click **Install License**.
 - From within QuickTest Professional, choose **Help > About QuickTest Professional**. The About QuickTest Professional dialog box opens. Click **License**. The License Summary dialog box opens. Click **Modify License**.

The License Type screen opens. Choose **Seat license** and click **Next**. Click **Yes** to install a new license key. The Welcome screen opens.



- 2 Request your license key as per the instructions included in your package. For more information, contact your HP Functional Testing products supplier or Customer Support. You will receive your license key via e-mail.
- 3 Click **Cancel** and wait for your license key to arrive by e-mail. When it arrives, follow the instructions as described below.

Installing a Seat License Key

After you receive your seat license key, you must install it.

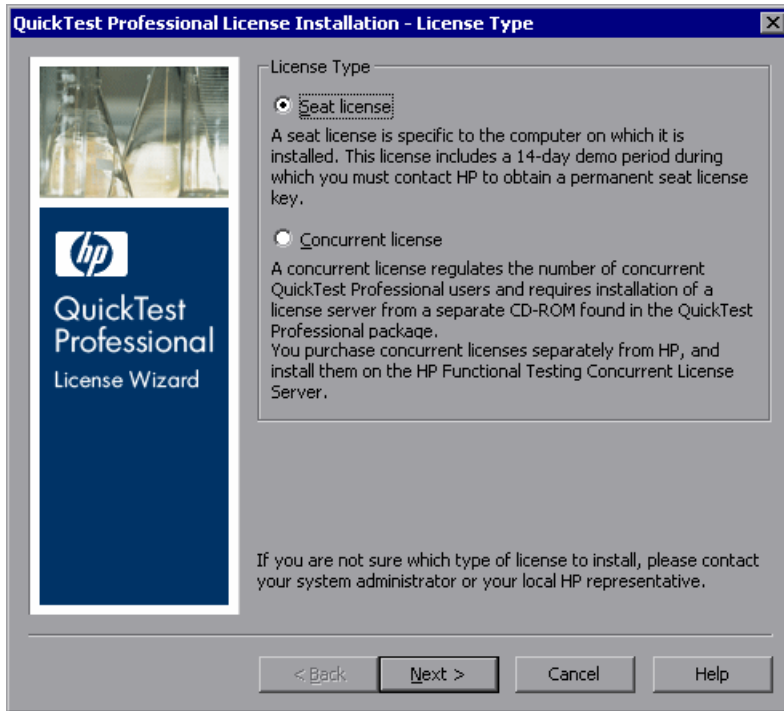
Note: You must have Administrator privileges to install a license key.

To install a seat license key:

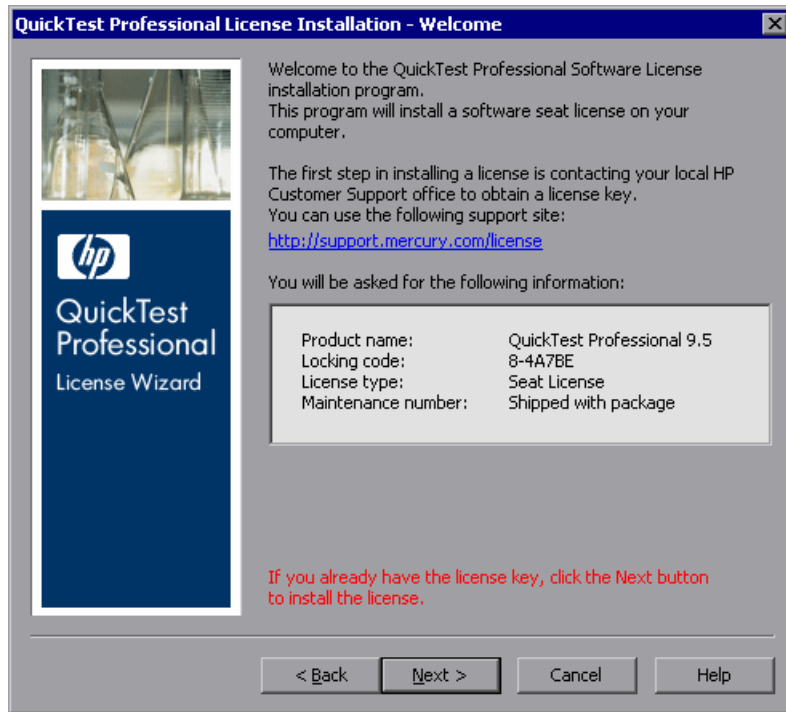
- 1 Perform one of the following:
 - From the warning message displayed when you start QuickTest Professional, click **Install License**.
 - From within QuickTest Professional, choose **Help > About QuickTest Professional**. In the About QuickTest Professional dialog box, click **License**. Then in the License Summary dialog box, click **Modify License**.

Note: You can also activate the seat license as part of the QuickTest installation. After you click **Finish** in the final installation screen, the QuickTest Professional License Installation - Welcome screen opens, as described below.

The License Type screen opens.

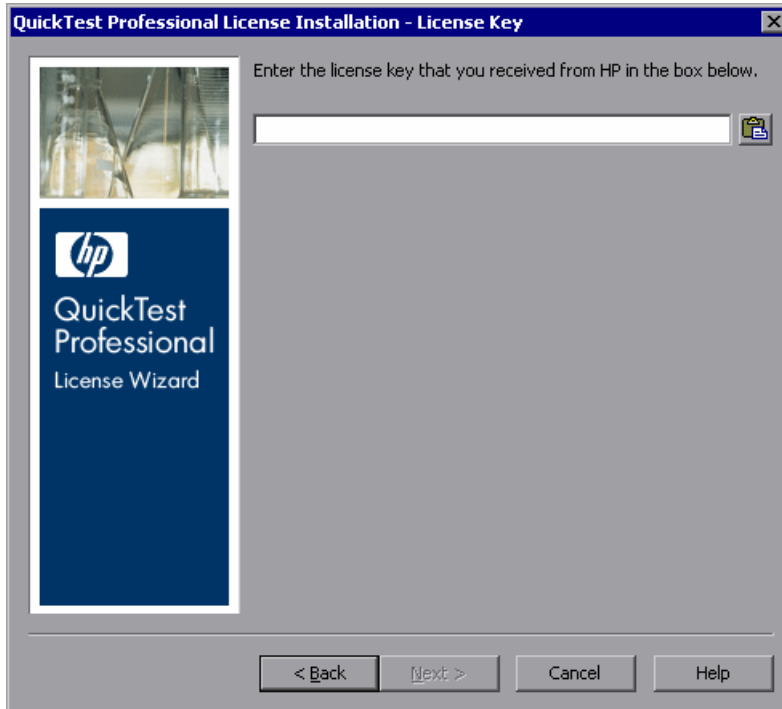


- 2 Choose **Seat license** and click **Next**. In the confirmation box, click **Yes** to install a new license key. The Welcome screen opens.



Tip: Check that the locking code in the above screen matches the locking code you sent to HP when you requested a license key.

- 3 Click **Next** to begin installing the license. The License Key screen opens.



Notes:

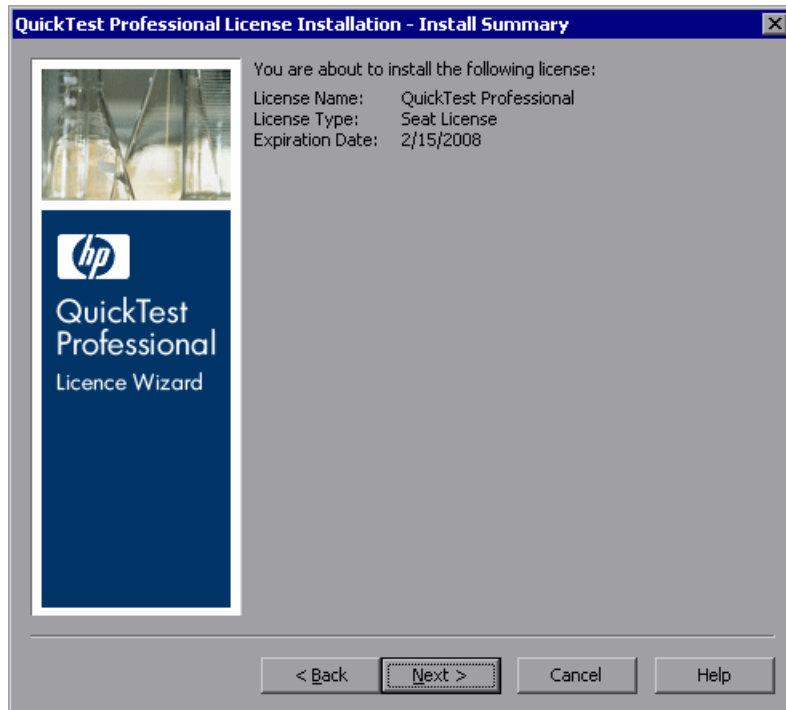
- ▶ The license key is valid only for the computer with the locking code that you entered in the HP Customer Support license request form.
 - ▶ A computer with multiple bootable partitions may generate a different locking code for each partition. If a different locking code is generated for a partition, you will need to request a unique license key for it.
-

- 4 Enter the license key you received from HP, including the # character at the end of the license key.

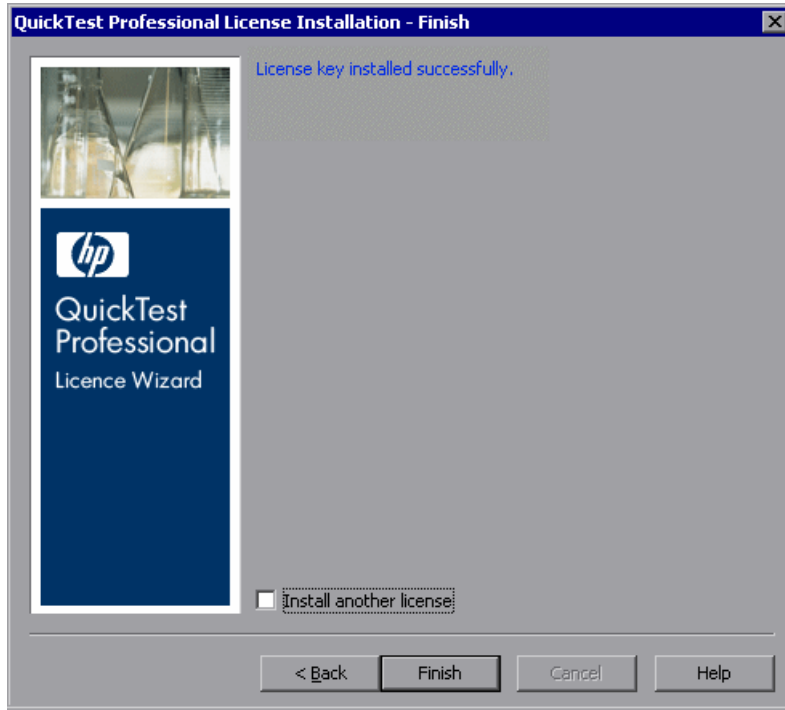


Tip: If you copy the license key to your clipboard, you can paste it in the license key box by clicking the **Paste From Clipboard** button.

- 5 Click **Next**. The Install Summary screen opens.



- 6 Verify that the information is correct and click **Next**. The Finish screen opens.



If you entered a valid license key, the Finish screen confirms that your license key was successfully installed.

If the license could not be installed successfully, a message is displayed describing why. For example, if a seat license was previously installed on your computer, and you try to install a seat license again using the same license key, the license installation will not succeed. If the license could not be installed, a **Send to Support** button is displayed. You can click **Send to Support** to create an e-mail with licensing information and send it to your nearest HP Customer Support location. Make sure that you fill in the required information in the e-mail so that customer support can assist you.

Tip: You can install another license by selecting the **Install another license** check box, clicking **Finish** and continuing with step 2 on page 57.

- 7 If you do not want to install another QuickTest license, click **Finish** to complete the license activation process and close the wizard.

Working with a Concurrent License

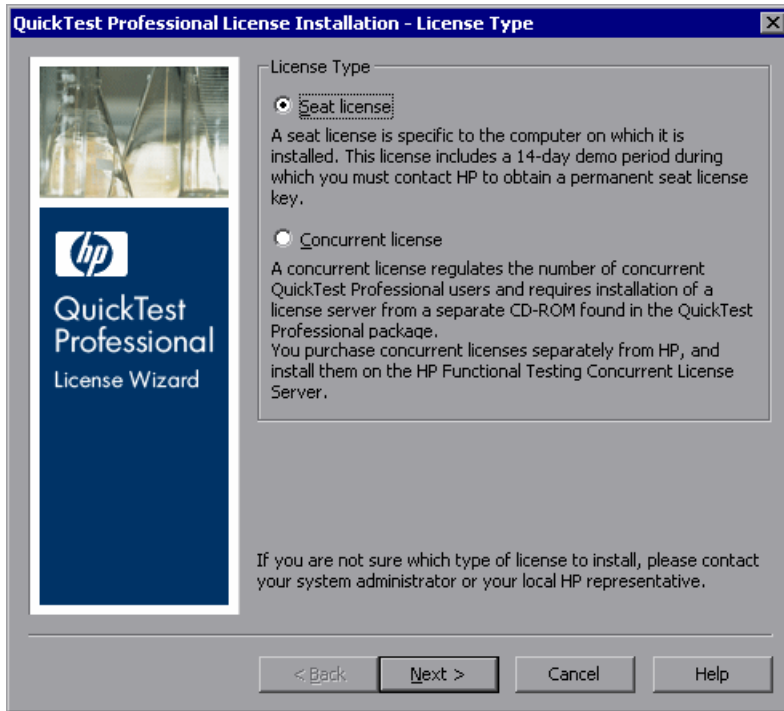
If there is an accessible concurrent license server on your network with an available license, you can connect to it. This enables you to use a concurrent license instead of a seat license. For more information on working with concurrent license servers, and the supported versions, see the *HP Functional Testing Concurrent License Server Installation Guide*.

Note: You can also specify a concurrent license server during the QuickTest installation procedure. For more information, see “Installing QuickTest Professional” on page 20.

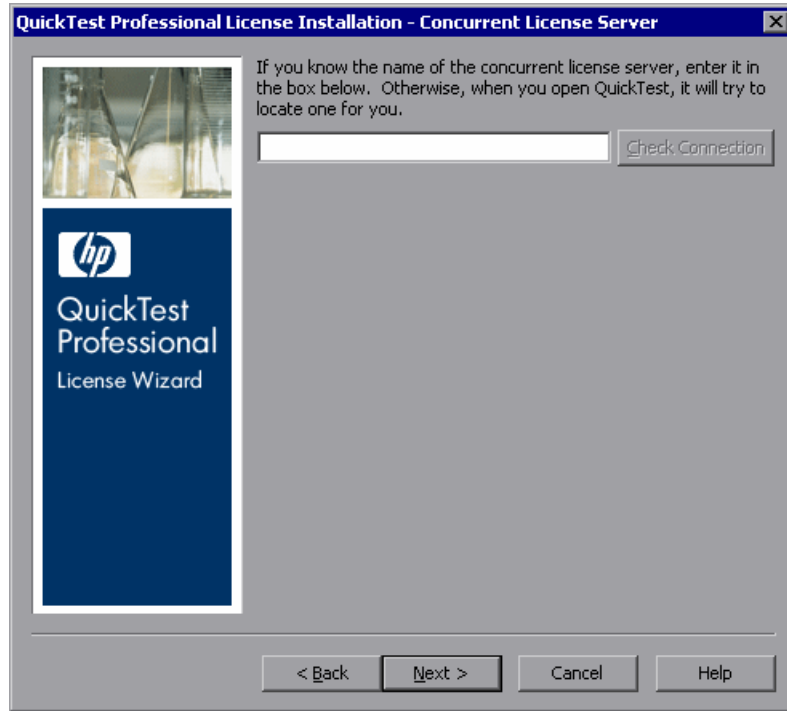
To work with a concurrent license:

- 1 Perform one of the following:
 - From the license warning message displayed when you start QuickTest Professional, click **Install License**.
 - From within QuickTest Professional, choose **Help > About QuickTest Professional**. The About QuickTest Professional dialog box opens. Click **License**. The License Summary dialog box opens. Click **Modify License**.

The License Type screen opens.



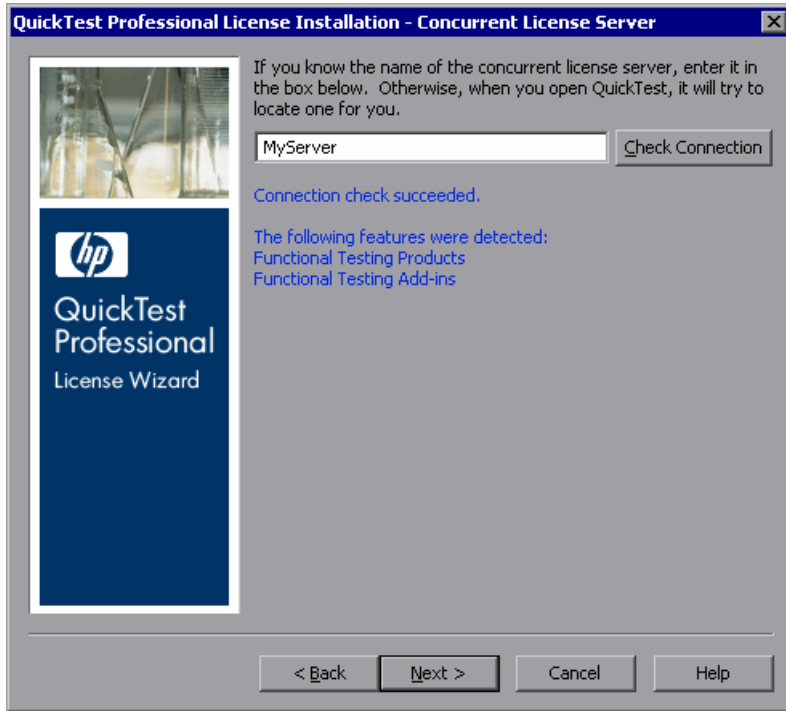
- 2 Choose **Concurrent license** and click **Next**. The Concurrent License Server screen opens.



- 3 In the edit box, either enter the name or IP address of the concurrent license server to which you want to connect, or leave the box blank to instruct QuickTest to search for an available server on your local network.

Tip: When you activate a concurrent license using the License Wizard, the LSHOST user variable is automatically defined with the concurrent license server you specified. You can modify the concurrent license server either by running the License Wizard or by setting the LSHOST or LSFORCEHOST user variable. For more information, see “Setting the LSHOST or LSFORCEHOST Variable” on page 70.

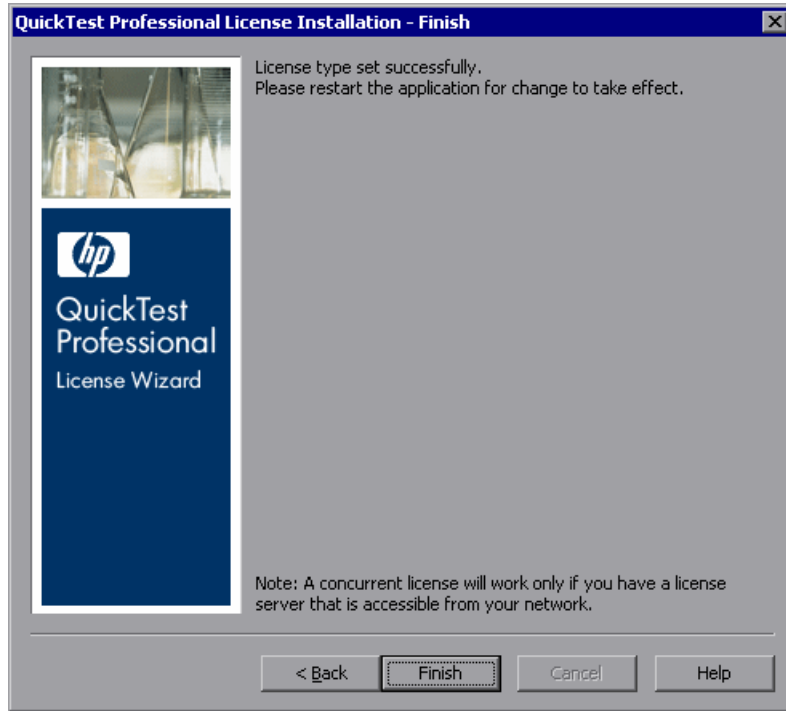
- 4 Click **Check Connection**. If QuickTest can connect to the concurrent license server, a success message is displayed.



Note: If the installation cannot connect to a concurrent license server, the Concurrent License Server screen informs you of this.

Tip: If you want to specify the name of a concurrent license server that is currently unavailable, but will be available later, you can enter the name of the concurrent license server in the edit box. Even though the Concurrent License Server screen informs you that the specified server is not available for connection, the next time you open QuickTest, QuickTest will try to locate the server you specified.

- 5 Click **Next**. The installation informs you that the concurrent license activation was successful.



- 6 Click **Finish** to close the wizard. If QuickTest Professional is open, you must close and restart it to use the concurrent license server.

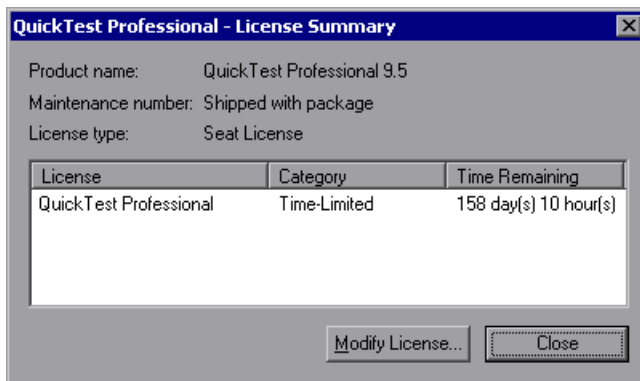
Modifying License Information

After you install QuickTest Professional, you can modify your license key and/or change your license type at any time.

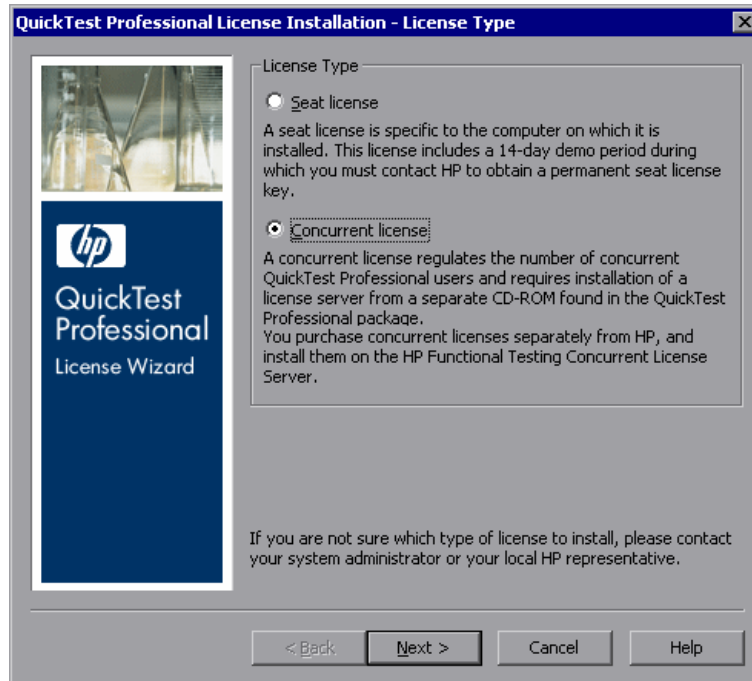
Note: You must be logged in with administrator privileges to change the license type used by your QuickTest installation from seat to concurrent or vice versa.

To modify your license information:

- 1 Open QuickTest Professional.
- 2 Click **Help > About QuickTest Professional**. The About QuickTest Professional dialog box opens.
- 3 Click **License**. The License Summary dialog box opens.



4 Click **Modify License**. The License Type screen opens.



- To change your license type from concurrent to seat, select **Seat license** and click **Next**. A confirmation box opens.
- If you already have a valid seat license key installed, click **No** to save your selected license type.
- If you checked out a commuter license and want to use it now, click **No**.
- If you do not have a seat license key installed, click **Yes**.

The Welcome screen opens. Follow steps 4 - 7 in “Installing a Seat License Key” on page 57.

- ▶ To change your license type from seat to concurrent, select **Concurrent license** and click **Next**. Follow steps 2 - 6 in “Working with a Concurrent License” on page 63.

Note: To work with a concurrent license, a concurrent license server must be installed on and accessible from the network, and a concurrent license must be available. For information on installing a concurrent license server, see the *HP Functional Testing Concurrent License Server Installation Guide*.

- 5 Click **Close** to close the About QuickTest Professional dialog box.
- 6 Restart QuickTest Professional to apply your changes.

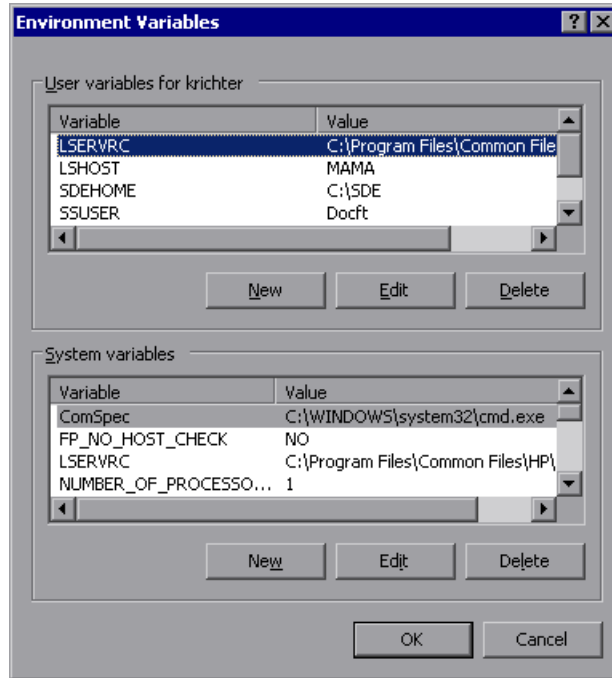
Setting the LSHOST or LSFORCEHOST Variable

In addition to using the License Wizard to specify the concurrent license server to which you want QuickTest to connect, you can also specify a concurrent license server using Windows Environment variables. For example, you can use the LSHOST variable to set the preferred concurrent license server for a QuickTest client. If the specified concurrent license server cannot be found in the local subnet, then a search is conducted on the entire network. Alternatively, you can use the LSFORCEHOST variable to restrict QuickTest to a specific concurrent license server.

Note: If you activated a concurrent license using the License Wizard, the LSHOST user variable is already defined with the concurrent license server you specified.

To set the LSHOST or LSFORCEHOST variables:

- 1 Open the Environment Variables dialog box. (Choose **Start > Settings > Control Panel**. Double-click **System**. In the System Properties dialog box, click the **Advanced** tab. Then click the **Environment Variables** button. The Environment Variables dialog box opens.)



Note: If the concurrent license server is already defined using an LSHOST or LSFORCEHOST system variable, you do not need to define it using the user variable.

- 2 Under **User variables for <user name>**, click **New**. The New User Variable dialog box opens.
- 3 In the **Variable Name** box, type LSHOST or LSFORCEHOST.

- 4 In the **Variable Value** box, type the full name of the concurrent license server. Alternatively, you can enter the IP address of the host computer.

Notes:

- ▶ The LSHOST and LSHOSTFORCE environment variable values are limited to 64 characters.
 - ▶ For multiple host names (for example, where there are HP Functional Testing Concurrent License Servers running on one network), use a semicolon (;) to separate the hosts' names or IP addresses in the **Variable Value** box.
-

- 5 Click **OK** to close the New User Variable dialog box.
- 6 Click **OK** to close the Environment Variables dialog box.
- 7 Click **OK** to close the System Properties dialog box.

Working with Commuter Licenses

If you use QuickTest with a concurrent license, but cannot connect your computer to your network (for example, during a business trip), you can install a commuter license. Commuter licenses are available in companies that have only concurrent licenses (not seat licenses).

For example, suppose you need to travel on business with your laptop computer and you want to use QuickTest while you are away. You can check out a QuickTest license from the concurrent license server to use for the duration of your trip, and then check the license back in upon your return. Commuter licenses are valid for up to 30 days, according to your requirements.

Tip: If you have a concurrent license and are located far from the concurrent license server, you can also use a commuter license if you encounter network traffic.

For more information, see “Checking Out a Commuter License” below, and “Checking In a Commuter License” on page 76.

Note: Installing a commuter license requires administrator permissions for the computer on which you want to use the license.

In addition, if you are unable to check out a license before you disconnect from the network (that is, leave for your trip), or if you checked out a license but it expired because your return was delayed, you can ask a local network user to check out a commuter license and send it to you remotely. For more information, see “Obtaining a Commuter License Remotely” on page 77.

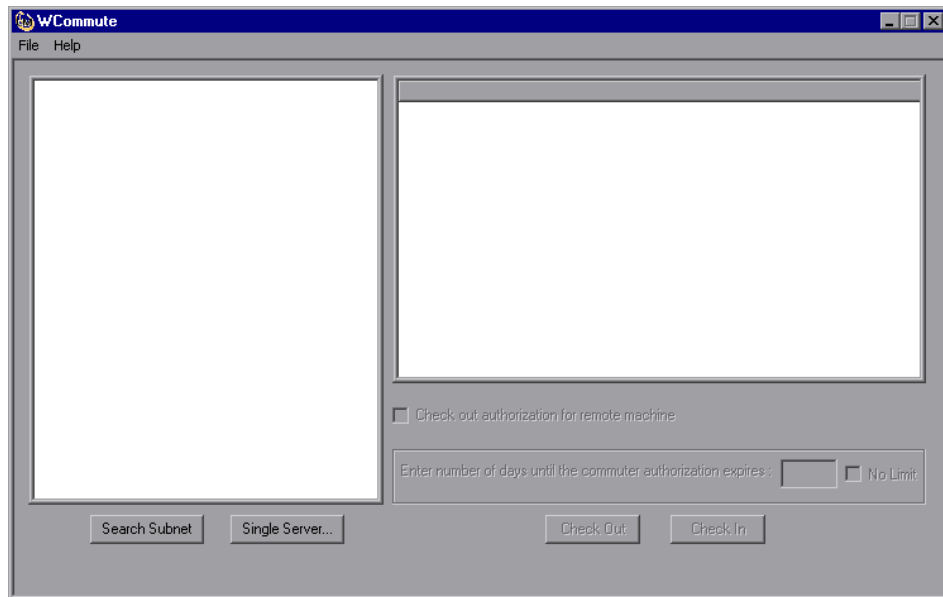
Note: Commuter licensing is supported by HP Functional Testing Concurrent License Server version 7.6 and later. If you have upgraded to HP Functional Testing Concurrent License Server version 7.6 or later, you need to request a new server license key to enable the commuter licensing functionality. For details, contact HP Customer Support or your local representative.

Checking Out a Commuter License

Before you check out a commuter license, ensure that the computer (for example, a laptop) on which you want to install the commuter license has QuickTest installed, is connected to the network, and has access to a concurrent license server with an available QuickTest license. After you have checked out the license, you can disconnect the computer from the network.

To check out a commuter license:

- 1 Run the **WCommute.exe** file located in **<QuickTest installation folder>\bin**. The WCommute dialog box opens.



- 2 To see commuter licenses available on all concurrent license servers located within your subnet, click **Search Subnet**. If you want to specify a particular concurrent license server, or if you want to select a concurrent license server outside of your subnet, click **Single Server**.
 - If you click **Search Subnet**, the WCommute utility searches the subnet for concurrent license servers that support commuter licensing and displays them in the WCommute dialog box. Note that this process may take several minutes.

- If you click **Single Server**, a dialog box opens enabling you to specify the concurrent license server you want to locate. Enter the concurrent license server computer's host name, IP address, or IPX address and click **OK**. The specified concurrent license server is located and displayed in the WCommute dialog box.

For each concurrent license server, a list of available commuter licenses is displayed. A red check mark next to a commuter license means that the license is already checked out to your computer. You cannot check out multiple licenses for the same application to the same computer. Click a license to view the license details in the right pane of the dialog box.

- 3** Select the license that you want to check out.
- 4** In the **Enter number of days until the commuter authorization expires** box, specify the maximum number of days to check out the license (up to a maximum of 30 days).

Note: When you check out a license, it decreases the number of licenses available for use by others. Therefore, you should specify the absolute minimum number of days that you require.

- 5** Click **Check Out**. The selected license is saved locally on your computer.
- 6** To use the new checked-out license, open QuickTest and change your license type from concurrent to seat. In the confirmation message that opens after you change the license type, click **No** to use the commuter license. For more information, see “Modifying License Information” on page 68.

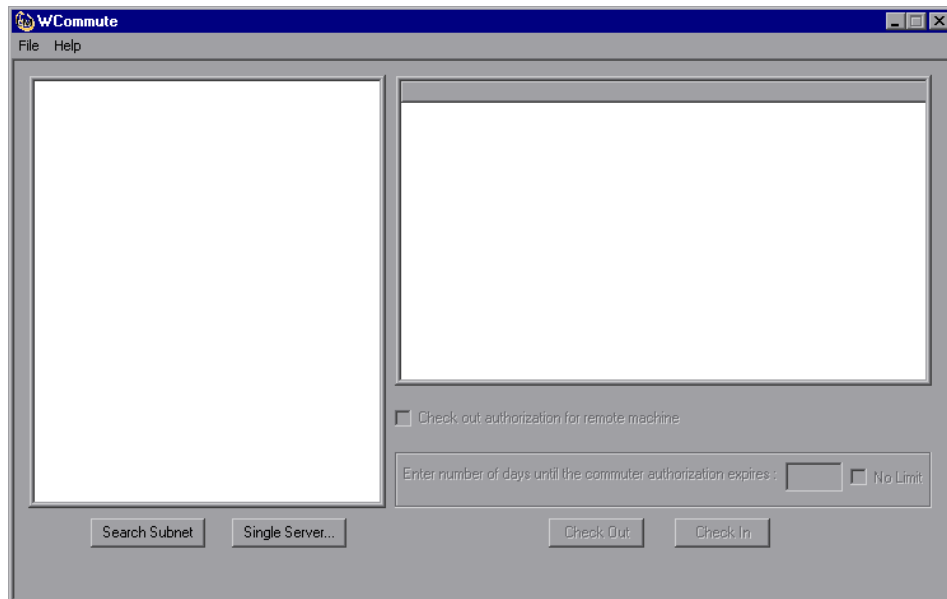
Checking In a Commuter License

When you finish using the commuter license, you should check it in from your computer to the concurrent license server from which you checked it out. This makes the license available to other users.

Note: If your license expires, you do not need to check it in. When a license expires, you can no longer use it. The license is automatically returned to the concurrent license server, even if your computer is not connected to the concurrent license server network.

To check in a commuter license:

- 1 Run the **WCommute.exe** file located in **<QuickTest installation folder>\bin**. The WCommute dialog box opens.



- 2 Locate the concurrent license server for the commuter license you want to check in, as described in step 2 of “Checking Out a Commuter License” on page 74. You must check in the license to the same concurrent license server from which you checked it out.
- 3 Select the license you previously checked out.

Tip: The checked-out license is indicated by a red check mark.

- 4 Click **Check In**. The license is returned to the concurrent license server, and is made available for use by others.

Note: Before you can use QuickTest again, you must change your license type from seat to concurrent. For more information, see “Modifying License Information” on page 68.

Obtaining a Commuter License Remotely

A local network user can locally check out a QuickTest commuter license and send it to you for installation on a remote computer. This is useful in situations in which you are currently not connected to the concurrent license server network. For example, you may be out of the office on an extended business trip, but need to be able to use QuickTest.

To obtain a commuter license remotely:

- 1 Run the WRCommute utility to generate a commuter locking code for your computer and send the commuter locking code to a local user who has access to the concurrent license server. For more information, see “Step 1: Generating a Remote Computer Locking Code” on page 78.
- 2 Ask the local user to run the WCommute utility (entering the commuter locking code you generated) to check out a remote commuter license, and send it to you. For more information, see “Step 2: Checking Out a Commuter License for a Remote Computer” on page 80.

- 3 Run the WRCommute utility to install the remote commuter license on your computer. For more information, see “Step 3: Installing a Commuter License on a Remote Computer” on page 83.
- 4 Open QuickTest and change your license type from concurrent to seat. In the confirmation message that opens after you change the license type, click **No** to use the commuter license. For more information, see “Modifying License Information” on page 68.

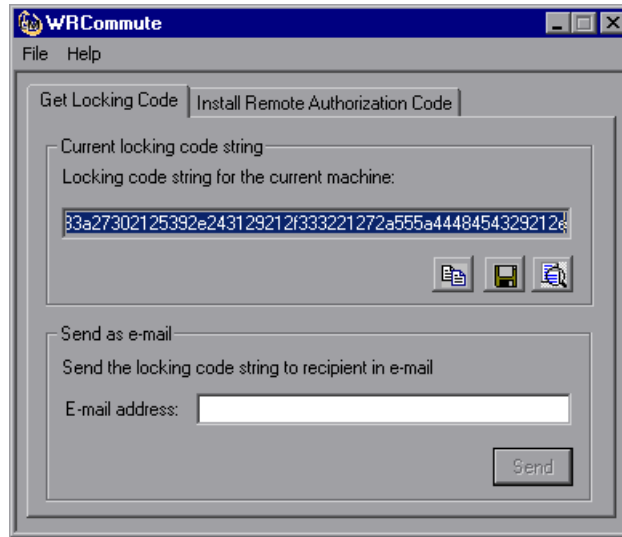
Step 1: Generating a Remote Computer Locking Code

The first step in remotely obtaining a commuter license is to generate a locking code on your computer using the WRCommute utility, and transfer it (by e-mail) to a network user who has access to the concurrent license server.

Note: The remote computer locking code used to lock a commuter license is not the same as the locking code displayed by the ECHOID utility. You must use the WRCommute utility to obtain the commuter license locking code.

To generate a locking code on a remote computer:

- 1 Run the **WRCommute.exe** file located in **<QuickTest installation folder>\bin**. The WRCommute dialog box opens.



The **Locking code string for the current machine** box contains the locking code that you need to e-mail to a network user who has access to the concurrent license server containing the QuickTest licenses.

- 2 Send the locking code to the local network user in one of the following ways:



- Select the locking code string and click the **Copy to clipboard** button to copy the string to your Windows clipboard. Then open your e-mail program and paste the string into a new e-mail message and e-mail it to the local network user.



- Click the **Save lock code string to file** button to save the locking code in a file. Specify the name and location for the file, and then attach the file to a new e-mail message and e-mail it to the local network user.



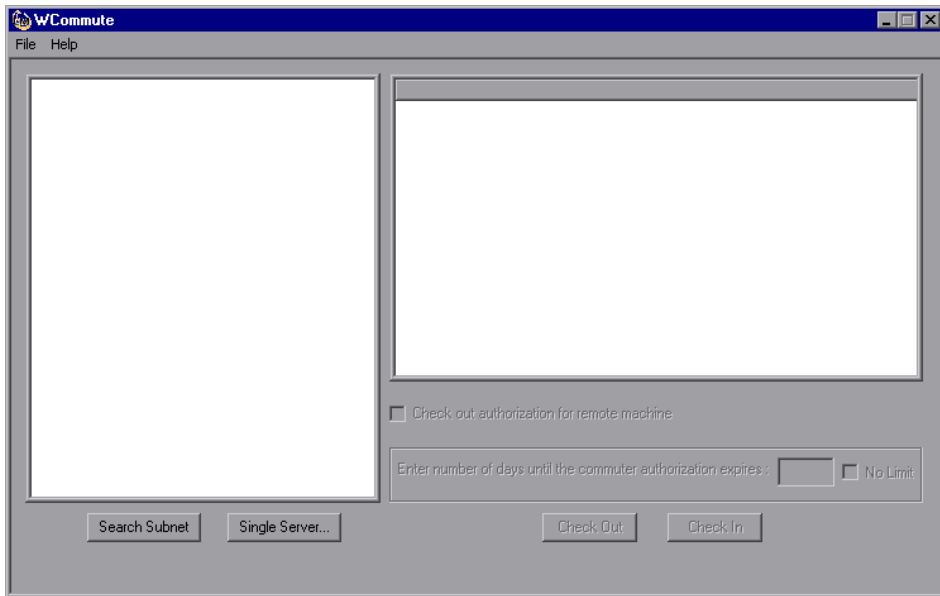
- ▶ Click the **Display locking code string** button to display the entire locking code in another dialog box. You can then select the locking code string, right-click it and select **Copy** to copy it to your Windows clipboard. Then open your e-mail program and paste the string into a new e-mail message and e-mail it to the local network user.
- ▶ In the **E-mail address** box, enter the e-mail address of the local network user and click **Send**. Note that this option is supported only if Microsoft Outlook Express is set up as your e-mail client.

Step 2: Checking Out a Commuter License for a Remote Computer

After a local network user receives the locking code, the user can check out the license and transfer it to you (by e-mail). To do this, the user must have QuickTest installed on his or her computer and also have access to the concurrent license server with an available QuickTest license.

To check out a commuter license for a remote computer:

- 1 Run the **WCommute.exe** file located in **<QuickTest installation folder>\bin**. The WCommute dialog box opens.



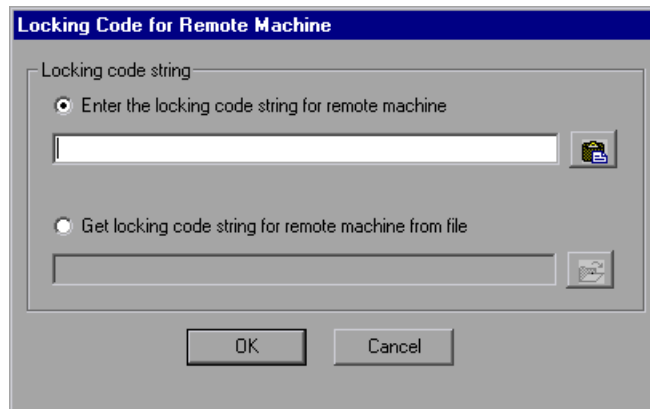
- 2 Locate the concurrent license server from which you want to check out a remote commuter license, as described in step 2 of “Checking Out a Commuter License” on page 74.

For each concurrent license server, a list of commuter licenses that you can check out is displayed.

- 3 Select the license that you want to check out.
- 4 Select the **Check out authorization for remote machine** check box.
- 5 In the **Enter the number of days until the authorization expires** box, specify the number of days to check out the license (up to a maximum of 30 days).

Note: When you check out a license for a remote machine, it cannot be checked in and remains in use (unavailable to other users) for the number of days specified. Therefore, you should specify the absolute minimum number of days required.

- 6 Click **Check Out**. The Locking Code for Remote Machine dialog box opens.



- 7 Enter the locking code that the remote user e-mailed you in one of the following ways:

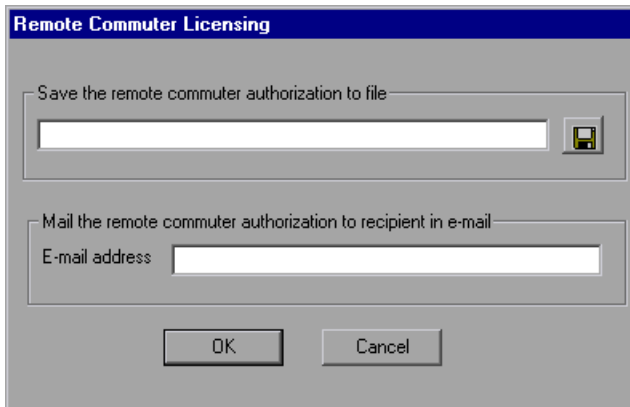


- ▶ If the locking code was e-mailed to you in the body of an e-mail, copy it to your Windows clipboard. In the Locking Code for Remote Machine dialog box, select **Enter the locking code string for remote machine** and then click the **Paste from clipboard** button.



- ▶ If the locking code was e-mailed to you as an attached file, save the attachment and then select **Get locking code string for remote machine from file**. Click the **Load** button. Select the file that contains the locking code and click **Open**.

- 8 Click **OK**. The Remote Commuter Licensing dialog box opens.



- 9 Send the commuter license to the remote user in one of the following ways:



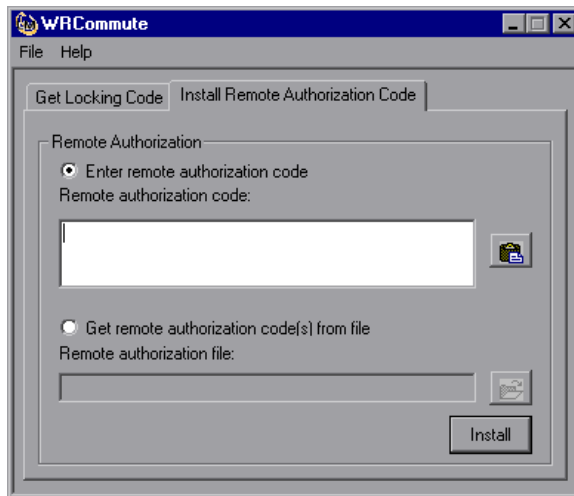
- ▶ Click the **Save** button to save the locking code in a file. Specify the name and location for the file, click **Save** and then click **OK**. Attach the file to a new e-mail message and e-mail it to the remote user.
- ▶ In the **E-mail address** box, enter the e-mail address of the remote user. Click **Send** and then click **OK**. Note that this option is supported only if Microsoft Outlook Express is set up as your e-mail client.

Step 3: Installing a Commuter License on a Remote Computer

The final step in remotely obtaining a commuter license is to install the license that was sent to you by the network user on your computer.

To install a commuter license on a remote computer:

- 1 Ensure that you are logged in to your computer with administrator privileges.
- 2 Run the **WRCommute.exe** file located in **<QuickTest installation folder>\bin**. The **WRCommute** dialog box opens.
- 3 Click the **Install Remote Authorization Code** tab.



- 4 Enter the commuter license that the network user e-mailed you, as follows:



- If the commuter license was e-mailed to you in the body of an e-mail, copy it to your Windows clipboard. In the **Install Remote Authorization Code** tab of the **WRCommute** dialog box, select **Enter remote authorization code** and then click the **Paste from clipboard** button.



- If the commuter license was e-mailed to you as an attached file, save the attachment and then select **Get remote authorization code(s) from file**. Click the **Load** button. Select the file that contains the locking code and click the **Open** button.

- 5 Click **Install**. The new license code is installed on your computer.

Step 4: Modifying the License Type on the Remote Computer

Open QuickTest and change your license type from concurrent to seat. In the confirmation message that opens after you change the license type, click **No** to use the commuter license. For more information, see “Modifying License Information” on page 68.

Note: A remote commuter license cannot be checked in to the concurrent license server when you have finished using it—it simply expires on the remote computer. After you return to your office and are reconnected to the network, you should change your license type from seat to concurrent. For more information, see “Modifying License Information” on page 68.

Validating QuickTest Licenses

The License Validation Utility decodes and validates QuickTest Professional license strings. This enables you to view and copy license information and license validation information for troubleshooting purposes.

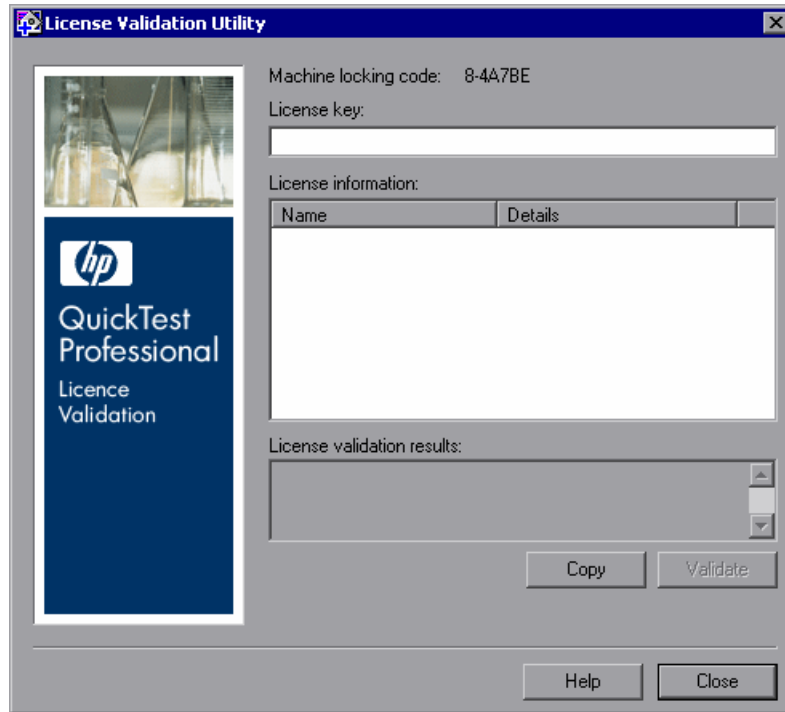
The License Validation Utility performs the following operations:

- ▶ Decodes the license string and retrieves important information regarding the license. For more information, see “License Information” on page 86.
- ▶ Validates the license according to a predefined set of checks. For more information, see “Validation Checks” on page 87.

If required, you can copy the decoding and validation results to the clipboard. For more information, see “Copying your License Validation Result to the Clipboard” on page 87.

To decode and validate a license:

- 1 Choose **Start > Programs > QuickTest Professional > Tools > License Validation Utility**.



- 2 In the **License Key** box, enter the license code you want to decode and validate. You can find the license code already installed on a QuickTest computer in the **lservrc** file.

Tip: Ensure that a # character is inserted at the end of the license code, or an error will be reported in the **License validation results** area. The # indicates the end of the license code, and any string after the # character is ignored by the License Validation Utility.

- 3 Click **Validate**. The license string is decoded.

License information is displayed in the **License information** area. For more information, see “License Information” on page 86.

The result of the validation is displayed in the **License validation results** area. For more information, see “Validation Checks” on page 87.

- 4 If required, click **Copy** to copy the information to the clipboard. The copied information includes the current machine locking code, the license string that was decoded, and the decoding and validation results. For more information, see “Copying your License Validation Result to the Clipboard” on page 87.
- 5 Click **Close** to close the utility.

License Information

The result of the decoding operation includes the following information about the license.

Note: Some information provided by the operation is intended for HP Customer Support only and is not described here.

- **Feature Name.** The QuickTest feature name specified when the license was created.
- **Feature Version.** The license version specified when the license was created. This is not the QuickTest Professional version number.
- **Seat/Concurrent.** The license type. This can be either a **Seat** license that is specific to the computer on which it is installed, or a **Concurrent** license, which references a current license server that can be used by multiple QuickTest users.
- **Trial/Normal.** The license type. It can be either a **Trial** license, which is a demo license that has a limited period of use, or a **Normal** license.
- **Trial Days Count.** Applicable only for trial licenses. Specifies the number of days until the trial period is over. The count is started from the date the QuickTest core components are installed.

- ▶ **Locking Code.** The locking code specified when the license was created. This code uniquely identifies the computer on which QuickTest is installed.
- ▶ **Clock Tamper.** Indicates whether a license can be issued, based on whether any date changes have been made to the computer on which QuickTest is installed.
- ▶ **Commuter License.** Indicates whether commuter licenses are supported. A commuter license enables you to work with QuickTest Professional when you are not connected to the QuickTest concurrent license server. Commuter licenses are available only with concurrent licenses. For more information, see “Working with Commuter Licenses” on page 72.

Validation Checks

The validation checks performed by the License Validation Utility include the following:

- 1** Does the QuickTest feature name match one of the existing features?
- 2** Does the license version match one of the existing versions?
- 3** Does the locking code match the locking code of the machine on which QuickTest is installed?
- 4** Has the trial period specified in the license string ended?
- 5** If the license is a concurrent license, does it support commuter licenses?

Copying your License Validation Result to the Clipboard

In some cases, you may need a copy of the information provided by this utility. For example, you may need to forward this information to HP Customer Support.

When the validation operation is complete, click the **Copy** button to copy the information to the clipboard. Then paste the information as required.

4

Maintaining and Uninstalling QuickTest Professional

You can install and uninstall individual QuickTest Professional features, or uninstall all QuickTest Professional software and files (including add-ins). You can also repair a QuickTest Professional installation that has become corrupted.

Note: In some situations, you may be prompted to restart your computer after you have installed or made changes to the QuickTest installation. It is recommended that you restart your computer as soon as possible if you are prompted to do so. Delaying the system restart may result in unexpected QuickTest behavior.

This chapter includes:

- ▶ Installing and Uninstalling Specific QuickTest Professional Features on page 90
- ▶ Repairing Your QuickTest Professional Installation on page 92
- ▶ Uninstalling QuickTest Professional on page 93
- ▶ Saving and Restoring Your QuickTest Settings on page 95

Installing and Uninstalling Specific QuickTest Professional Features

Your QuickTest Professional DVD enables you to install or uninstall specific QuickTest Professional features. For example, you can install or uninstall an add-in or the sample applications provided with QuickTest Professional.

Note: You can also install or uninstall specific QuickTest Professional features by choosing **Start > Settings > Control Panel > Add or Remove Programs**, and then clicking the **Change** button for QuickTest Professional.

The procedure for installing or uninstalling features is similar to the procedure for performing a Custom installation. For more information on the specific screens mentioned in the procedure below, see “Installing QuickTest Professional” on page 20.

Note: Before uninstalling QuickTest Professional features, make sure that you have a minimum of 50 MB free disk space.

To install or uninstall QuickTest Professional features:

- 1 Insert the QuickTest Professional DVD into the DVD drive. If the DVD drive is on your local computer, the QuickTest Professional Setup window opens. If the DVD is in a network drive, double-click **setup.exe** in the root folder of the DVD. The QuickTest Professional Setup window opens.

Note: You must use the same QuickTest Professional version that you used for the original installation.

- 2 Click **QuickTest Professional Setup**. The Welcome to the HP QuickTest Professional 9.5 Setup Wizard opens. Click **Next** to proceed.
- 3 The Maintenance Type screen opens. Select **Modify** and click **Next**.
- 4 In the Custom Setup screen, click on an icon to view a menu and select how that feature is installed on your computer. The following options are available, depending on the feature:



- **Will be installed on local hard drive.** Installs the selected feature on your local hard drive.



- **Entire feature will be installed on local hard drive.** Installs the entire selected feature on your local hard drive.



- **Entire feature will be unavailable.** Excludes the feature from the installation and it is not available in QuickTest.

You can select an item in the list to see a description of the feature as well as the space requirement on your drive for the feature, or how much space will be freed up if the feature is uninstalled.

Click **Next** to proceed.

- 5 Click **Next** in the Confirm Installation screen. The Installing HP QuickTest Professional 9.5 screen displays the progress of the application modification.
- 6 The Installation Complete screen opens. Click **Finish**.

Note: If you install a feature that has prerequisites for use with QuickTest, the Additional Installation Requirements dialog box will open after the feature is installed. For more information, see “Working with the Additional Installation Requirements Utility” on page 36.

Repairing Your QuickTest Professional Installation

Your QuickTest Professional DVD enables you to repair an existing QuickTest Professional installation, by replacing any missing or damaged files from your previous QuickTest Professional installation.

Note: You can also repair an existing QuickTest Professional installation by choosing **Start > Settings > Control Panel > Add or Remove Programs**, and then clicking the **Change** button for QuickTest Professional.

To repair your QuickTest Professional installation:

- 1** Insert the QuickTest Professional DVD into the DVD drive. If the DVD drive is on your local computer, the QuickTest Professional Setup window opens. If the DVD is in a network drive, double-click **setup.exe** in the root folder of the DVD. The QuickTest Professional Setup window opens.

Note: To use the QuickTest Professional DVD to repair an installation, you must use the same DVD that you used for the original installation.

- 2** Click **QuickTest Professional Setup**. The Welcome to the HP QuickTest Professional 9.5 Setup Wizard opens. Click **Next** to proceed.
- 3** The Maintenance Type screen opens.
- 4** Select **Repair** and click **Next**. The Setup Status screen displays the progress of the repair process.

Note: The repair process might take some time to start. During this time, the wizard might not respond. Afterwards, the Run Setup screens open and the repair process continues.

- 5** Click **Finish** in the Installation Complete screen.

Uninstalling QuickTest Professional

You can uninstall QuickTest Professional using the **Add or Remove Programs** option in the Windows Control Panel or using the QuickTest Professional DVD.

You can save your existing customization settings and registry keys before you uninstall QuickTest Professional, and then if required, restore them after you install a new version. For more information, see “Saving and Restoring Your QuickTest Settings” on page 95.

Before uninstalling QuickTest, make sure that you have a minimum of 50 MB free disk space.

Notes:

- ▶ You can uninstall specific QuickTest Professional features as described in “Installing and Uninstalling Specific QuickTest Professional Features” on page 90.
- ▶ You can uninstall individual QuickTest Professional hotfixes (patches) using the **Add or Remove Programs** option in the Windows Control Panel.

To uninstall QuickTest Professional using the Add or Remove Programs option in the Windows Control Panel:

- 1** Choose **Start > Settings > Control Panel > Add or Remove Programs**. The list of currently installed programs opens.
- 2** Select **QuickTest Professional** and click **Remove**. A message prompts you to confirm your decision to uninstall QuickTest Professional. Click **Yes** and follow the on-screen instructions to uninstall QuickTest Professional. Click **No** to keep QuickTest Professional installed on your computer.

The uninstall program removes all QuickTest Professional features from your computer (including any QuickTest Professional add-ins).

To uninstall QuickTest Professional using the QuickTest Professional DVD:

- 1** Insert the QuickTest Professional DVD into the DVD drive. If the DVD drive is on your local computer, the QuickTest Professional Setup window opens.
If the DVD is in a network drive, double-click **setup.exe** in the root folder of the DVD. The QuickTest Professional Setup window opens.

Note: You must use the same DVD that you used for the original installation.

- 2** Click **QuickTest Professional Setup**. The Welcome to HP QuickTest Professional 9.5 Setup Wizard opens.
- 3** Click **Next**. The Maintenance Type screen opens.
- 4** Select **Remove** and click **Next**. Click **Next** in the Confirm Uninstall screen.
The uninstall program removes all QuickTest Professional features from your computer (including any QuickTest Professional add-ins).
- 5** Click **Finish** in the Removal Complete screen.

Note: Uninstalling QuickTest Professional does not uninstall any non-HP applications that you install as part of the QuickTest Professional installation, for example, the Microsoft Script Debugger or the Microsoft .NET Framework. You can uninstall these applications using the **Add or Remove Programs** dialog box in the **Control Panel**.

Saving and Restoring Your QuickTest Settings

If you are upgrading to QuickTest Professional 9.5, you need to first uninstall your previous version of QuickTest Professional. The Save and Restore Settings utility enables you to save your existing customization settings, registry keys, and tests before you uninstall an old QuickTest version, and then restore them after you install a new version.

This means that you will not need to reconfigure your preferences. The Save and Restore Settings utility is particularly useful for saving the manual customizations made to extensibility `.xml` files.

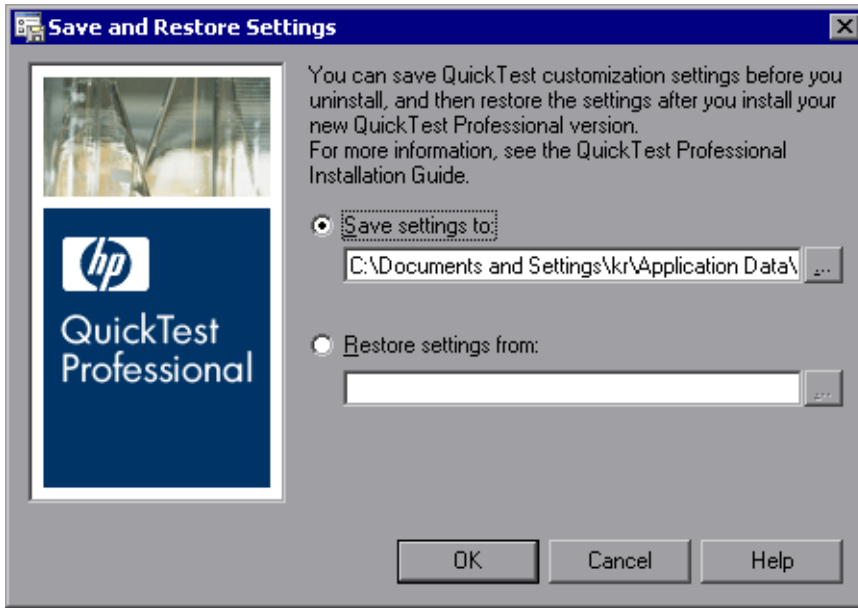
For a list of the files and settings saved by the Save and Restore Settings utility, see “Saved Files And Settings” on page 97.

To save existing settings and tests:

- 1 Before uninstalling your previous QuickTest version, run the **SaveRestoreSettings.exe** file located in the root of the QuickTest installation DVD.

Note: After installing QuickTest Professional 9.5, the Save and Restore Settings utility is also available from **Start > Programs > QuickTest Professional > Tools > Save and Restore Settings**.

The Save and Restore Settings dialog box opens.



- 2 Select the **Save settings to** radio button option and enter the location and zip file name in which you want to save your existing QuickTest Professional customization settings, registry keys, and tests.
- 3 Click **OK** to save your settings and tests.

To restore saved settings and tests:

- 1 After installing QuickTest Professional 9.5, choose **Start > Programs > QuickTest Professional > Tools > Save and Restore Settings**. The Save and Restore Settings dialog box opens.
- 2 Select the **Restore settings from** radio button option and enter the location and zip file name in which your QuickTest Professional customization settings, registry keys, and tests are saved.
- 3 Click **OK** to restore your settings and tests.

Saved Files And Settings

The Save and Restore Settings utility saves specific files from the **bin** and **dat** folders in the QuickTest Professional installation folder, specific QuickTest registry keys, and tests.

Bin Folder Files

The following files in the <QuickTest Professional installation>\bin folder are saved by the Save and Restore Settings utility:

- Mic.ini
- Qtreport.ini

Dat Folder Files

The following files from the <QuickTest Professional installation>\dat folder are saved by the Save and Restore Settings utility, if they exist (depending on the installed add-ins):

Related Add-in	File Name
Siebel	SiebelConfiguration.xml*
Siebel	SiebelEventConfiguration.xml*
Siebel	SiebelExceptionConfig.xml*
Siebel	SiebelPatterns.xml*
Siebel	CASConfiguration.xml*
Siebel	CASEventConfiguration.xml*
SAP	PropertyPatternConfigSAP.xml*
SAP	SAPConfiguration.xml*
SAP	SAPLearnFilter.xml*
SAP	SapEventConfiguration.xml*
PeopleSoft	PSConfiguration.xml*
PeopleSoft	PSEventConfiguration.xml*
PeopleSoft	PSLearnFilter.xml*

Related Add-in	File Name
.NET	SwfConfig.xml
.NET	PatternsData.xml
.NET	WebFormsConfiguration.xml*
.NET	WebFormsEventConfiguration.xml*
.NET	WebFormsLearnFilter.xml*

Note: Files marked with an asterisk are copied only if they were changed by the user, but are not copied if no changes were made.

Registry Keys

The following registry key is saved by the Save and Restore Settings utility:

- ▶ HKEY_LOCAL_MACHINE\SOFTWARE\Mercury Interactive\QuickTest Professional\MicTest\Packages\TEAPackage

Tests

All tests in the <QuickTest Professional installation>\Tests folder are saved by the Save and Restore Settings utility.