

# HP Project and Portfolio Management Center

Software Version: 7.1

---

## Customizing the Standard Interface

Document Release Date: May 25, 2007

Software Release Date: March 2007



## Legal Notices

This document, and the accompanying software and other documentation, is protected by U.S. and international copyright laws, and may be used only in accordance with the accompanying license agreement. Features of the software, and of other products and services of Mercury Interactive Corporation, may be covered by one or more of the following patents: United States: 5,511,185; 5,657,438; 5,701,139; 5,870,559; 5,958,008; 5,974,572; 6,137,782; 6,138,157; 6,144,962; 6,205,122; 6,237,006; 6,341,310; 6,360,332; 6,449,739; 6,470,383; 6,477,483; 6,549,944; 6,560,564; 6,564,342; 6,587,969; 6,631,408; 6,631,411; 6,633,912; 6,694,288; 6,738,813; 6,738,933; 6,754,701; 6,792,460 and 6,810,494. Australia: 763468 and 762554. Other patents pending. All rights reserved.

**U.S. GOVERNMENT RESTRICTED RIGHTS.** This Software Documentation is a “commercial item” as defined at 48 C.F.R. 2.101 (October 1995). In accordance with 48 C.F.R. 12.212 (October 1995), 48 C.F.R. 27.401 through 27.404 and 52.227-14 (June 1987, as amended) and 48 C.F.R. 227.7201 through 227.7204 (June 1995), and any similar provisions in the supplements to Title 48 of the C.F.R. (the “Federal Acquisition Regulation”) of other entities of the U.S. Government, as applicable, all U.S. Government users acquire and may use this Documentation only in accordance with the restricted rights set forth in the license agreement applicable to the Computer Software to which this Documentation relates.

Mercury, Mercury Interactive, the Mercury logo, the Mercury Interactive logo, LoadRunner, WinRunner, SiteScope and TestDirector are trademarks of Mercury Interactive Corporation and may be registered in certain jurisdictions. The absence of a trademark from this list does not constitute a waiver of Mercury's intellectual property rights concerning that trademark.

All other company, brand and product names may be trademarks or registered trademarks of their respective holders. Mercury disclaims any responsibility for specifying which marks are owned by which companies or which organizations.

Intel®, Intel® Itanium®, Intel® Xeon™, and Pentium® are trademarks or registered trademarks of Intel Corporation or its subsidiaries in the United States and other countries.

Java™ is a U.S. trademark of Sun Microsystems, Inc.

Microsoft®, Windows®, and Windows® XP are U.S. registered trademarks of Microsoft Corporation.

Oracle® is a registered U.S. trademark of Oracle Corporation, Redwood City, California.

UNIX® is a registered trademark of The Open Group.

Mercury provides links to external third-party Web sites to help you find supplemental information. Site content and availability may change without notice. Mercury makes no representations or warranties whatsoever as to site content or availability.

© 1997- 2007 Mercury Interactive Corporation. All rights reserved.

## Documentation Updates

This manual's title page contains the following identifying information:

- Software version number, which indicates the software version
- Document release date, which changes each time the document is updated
- Software release date, which indicates the release date of this version of the software

To check for recent updates, or to verify that you are using the most recent edition of a document, go to: [http://ovweb.external.hp.com/lpe/doc\\_serv/](http://ovweb.external.hp.com/lpe/doc_serv/).

You will also receive updated or new editions if you subscribe to the appropriate product support service. Contact your HP sales representative for details.

## Support

### Mercury Product Support

You can obtain support information for products formerly produced by Mercury as follows:

- If you work with an HP Software Services Integrator (SVI) partner ([www.hp.com/managementsoftware/svi\\_partner\\_list](http://www.hp.com/managementsoftware/svi_partner_list)), contact your SVI agent.
- If you have an active HP Software support contract, visit the HP Software Support site and use the Self-Solve Knowledge Search to find answers to technical questions.
- For the latest information about support processes and tools available for products formerly produced by Mercury, we encourage you to visit the HP-Mercury Software Support web site at: [support.mercury.com](http://support.mercury.com).
- Contact your HP Sales Representative if you have additional questions.

### HP Software Support

You can visit the HP Software Support web site at [www.hp.com/managementsoftware/services](http://www.hp.com/managementsoftware/services).

HP Software online support provides an efficient way to access interactive technical support tools. As a valued support customer, you can benefit by using the support site to:

- Search for knowledge documents of interest
- Submit and track support cases and enhancement requests
- Download software patches
- Manage support contracts
- Look up HP support contacts
- Review information about available services
- Enter into discussions with other software customers
- Research and register for software training

Most of the support areas require that you register as an HP Passport user and sign in. Many also require a support contract. To find more information about access levels, go to: [www.hp.com/managementsoftware/access\\_level](http://www.hp.com/managementsoftware/access_level).

To register for an HP Passport ID, go to: [www.managementsoftware.hp.com/passport-registration.html](http://www.managementsoftware.hp.com/passport-registration.html).

---

# Table of Contents

List of Figures .....	vii
List of Tables .....	ix
<b>Chapter 1: Getting Started with Customizations</b> .....	<b>11</b>
Overview of Customizations .....	12
Risk Factors .....	16
Risk Mitigation .....	16
Typical Modifications.....	17
Unusual Requirements .....	17
Recommended Skills.....	17
<b>Chapter 2: Branding Your Instance</b> .....	<b>19</b>
Working with Cascading Style Sheets.....	20
Controlling Fonts and Colors .....	20
Font Usage .....	20
Color Usage.....	20
PPM Dashboard Style Sheets.....	21
Non-Dashboard Style Sheets.....	21
Customizing the Standard Interface .....	22
Changing the Corporate Logos.....	22
Changing the Fonts .....	24
Changing the Colors .....	24
Changing the Sign Out Button Borders or Text .....	30
<b>Chapter 3: Customizing Your Instance</b> .....	<b>31</b>
Enhancing the Logon Page .....	32
Identifying an Instance.....	34
Changing Menu Item Text.....	34
Specifying Portlet Field Colors.....	38
<b>Chapter 4: Customizing Your Documentation Library</b> .....	<b>41</b>
Working with the Library.....	42
Removing Unnecessary Product Documents .....	42
Adding Documents for PPM Center Supplemental Products.....	47
Adding Site-Specific Documents.....	49
Supported File Type Icons .....	53

<b>Chapter 5: Advanced Topics</b> .....	55
Component Overview.....	56
Identifying CSS Files and Class Definitions .....	56
Example: Finding Information for a PPM Dashboard Page.....	56
Example: Finding Information for a Non-Dashboard Page.....	57
Where to Find the Files.....	58
Modifying JSP Files .....	59
JSP Page Definitions .....	60
Guidelines for Modifying JSP Pages.....	60
Header.jsp File.....	61
Making Changes to Specific Pages .....	62
Example: JSP, CSS, and the Standard Interface .....	62
<b>Appendix A: Color Names</b> .....	65
<b>Appendix B: Sample Files</b> .....	71
resource_management.xml Menu File.....	72
ColorPalette.css Portlet Color Specification File .....	75
Library.dtd File .....	76
Custom.dtd File.....	77
Cameo.dtd File .....	77
<b>Index</b> .....	79

---

# List of Figures

Figure 1-1 PPM Center banner and menu bar areas ..... 13

Figure 1-2 PPM Dashboard area ..... 14

Figure 1-3 Non-Dashboard area ..... 15

Figure 3-1 Custom logon page ..... 32

Figure 4-1 PPM Documentation Library page ..... 43

Figure 4-2 Supplemental product documentation page ..... 47

Figure 4-3 Custom documentation page ..... 50

Figure 5-4 Field prompt example ..... 63

Figure B-1 Resource Management menu group ..... 72





---

# List of Tables

Table 2-1	Corporate logo files used in the PPM Center standard interface.....	22
Table 2-2	Files using corporate colors.....	24
Table 3-1	Menu group files.....	35
Table A-1	Color names.....	65



---

# 1 Getting Started with Customizations

---

## In This Chapter:

- *Overview of Customizations*
    - *Risk Factors*
    - *Risk Mitigation*
    - *Typical Modifications*
    - *Unusual Requirements*
  - *Recommended Skills*
-

## Overview of Customizations

After installing HP Project and Portfolio Management Center (PPM Center), you may want to change certain aspects of the standard interface to better suit your company's visual guidelines. The following characteristics of the standard interface can be customized:

- Corporate logos
- Fonts
- Colors

In general, the standard interface is composed of the following areas whose appearances are controlled by different sets of cascading style sheet files which you can modify to meet your requirements.

- **Banner and menu bar.** This includes the corporate logo in the upper left-hand corner. The banner is composed of two “ribbons” of colors in blue and gray (see *Figure 1-1*).

Changes made to the files for this area tend to be near-global in scope since this area is common to both the PPM Dashboard application and all the other PPM Center application modules (such as HP Project Management or HP Resource Management). Customizations made to the files affecting this area are typically displayed the next time a user logs in.

- **PPM Dashboard.** When viewing a PPM Dashboard page (that is, when using the PPM Dashboard application), this includes anything to the right of the menu bar and below the banner. Note that this also includes the navigation history text presented on the gray ribbon of the banner (see *Figure 1-2*).

Other than any modifications to the navigation history text (bread crumbs), changes made to files for this area tend to be specific to a single PPM Dashboard page or portlet. To be displayed to PPM Center users, customizations made to the files affecting this area generally require restarting the PPM Server.

- **Other non-Dashboard pages.** When viewing any non-Dashboard application page, this includes anything to the right of the menu bar and below the banner (such as Create New Request, Request Detail, and so forth). For this area, see *Figure 1-3*.

Customizations made to files for this area tend to be specific to various aspects of PPM Center applications. Similar to the banner and menu bar, updates to the files affecting this area are usually displayed the next time a user logs in.

Figure 1-1. PPM Center banner and menu bar areas

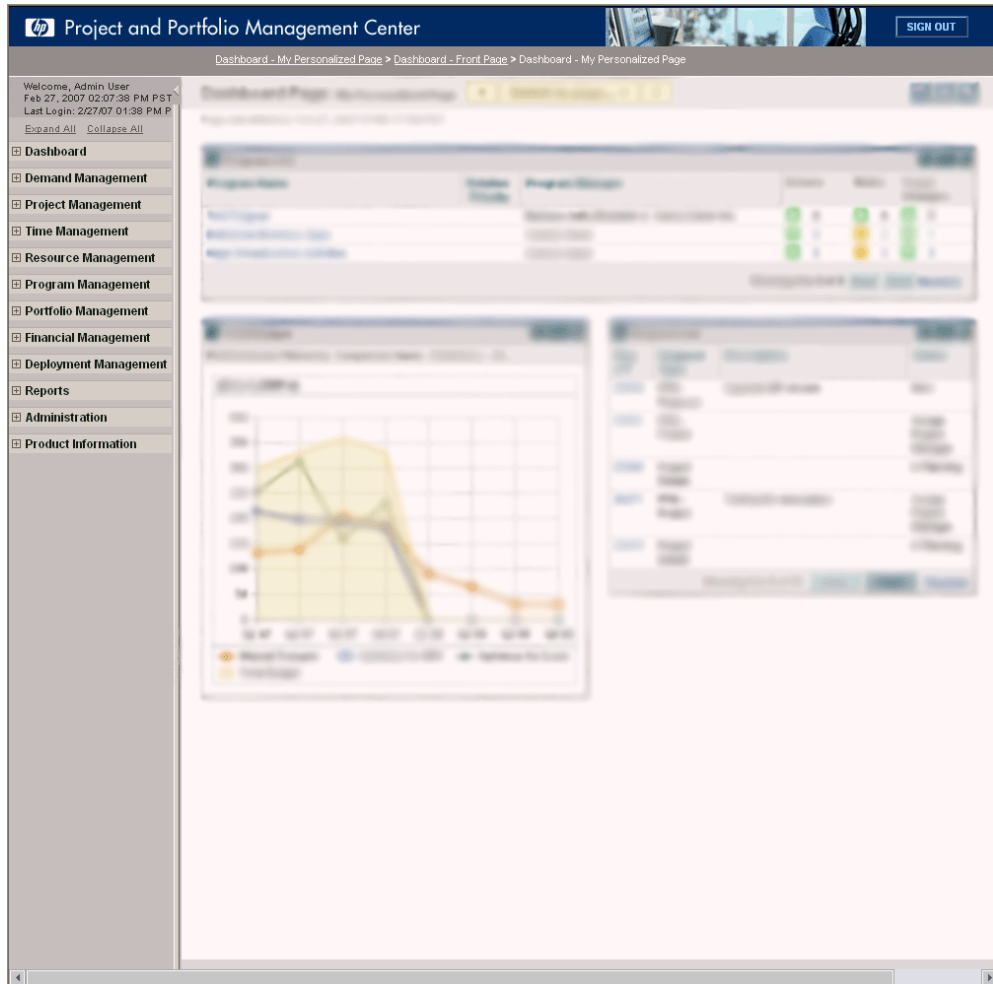


Figure 1-2. PPM Dashboard area

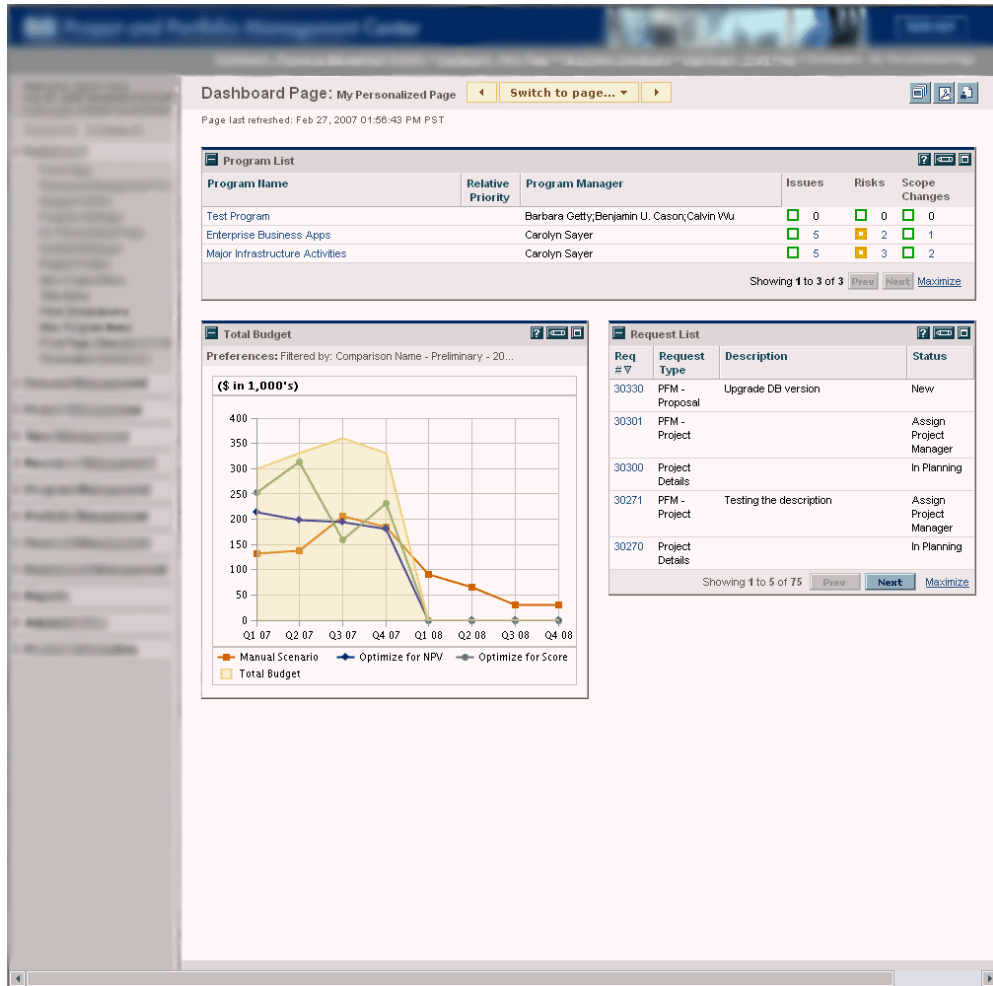


Figure 1-3. Non-Dashboard area

Current Demand	Effort	Count
<input type="checkbox"/> Backlog	33	12
Totals	33	12

Note that to separate areas of related data, many pages include visual elements such as headings, subheadings, and rules.



The example shown in [Figure 1-3](#) includes two headings (labeled **Demand to be Scheduled** and **Filter by**), one subheading (labeled **Demand Information**), and one rule (found below the **Apply** button).

## Risk Factors

Risks fall into the following categories:

- **Service pack overwrites/incompatibilities.** Your customizations may not be preserved or fully compatible after the installation of any service pack.
- **Upgrade overwrites/incompatibilities.** During a system upgrade, changes made to any customized files may not be preserved, or due to changes in system architecture, customizations may not be fully compatible with a subsequent release.
- **Human factors.** Errors may be introduced when making changes.

## Risk Mitigation

To minimize these risks, HP recommends the following:

- Before making changes, copy the files to a temporary “working” location that is not on the PPM Server, then make your changes to these copied versions.
- Make a backup copy of each file before making any changes.
- Make a backup copy of each file after making your changes.
- Keep all backup copies in a safe location. This location should be separate from the PPM Server, yet accessible to all instance administrators.
- Thoroughly test all changes before deploying the customized files.
- For modifications requiring restarts of the PPM Server, consider scheduling these activities when they will have the least impact on the PPM Center user community.



## Typical Modifications

The most common type of customization involves re-branding. That is, changing the banner, heading, and rule colors to those matching your corporate color palette, as well as replacing the corporate logos with your own. Details to assist with these types of customizations are discussed in [Chapter 2, \*Branding Your Instance\*, on page 19](#).

Additionally, some sites prefer to make changes that augment the information displayed in the standard interface. How to make changes, such as enhancing your logon page or changing menu item text, are described in [Chapter 3, \*Customizing Your Instance\*, on page 31](#).

New to version 7 is the ease with which you can modify the list of product documents. This is beneficial when only a limited portion of PPM Center's capabilities are licensed at your site and, therefore, you do not need to provide documentation for the unlicensed applications. Also new in version 7 is the capability to host site-specific, customer-provided, or tailored documents that are accessible from the Documentation Library page. Implementing these features are detailed in [Chapter 4, \*Customizing Your Documentation Library\*, on page 41](#).

## Unusual Requirements

[Chapter 5, \*Advanced Topics\*, on page 55](#) provides tips and techniques for resolving the unexpected or unusual customizations that may be desired for your PPM Center instance.

## Recommended Skills

Familiarity with the following skillsets will help you implement the changes described in this document:

- JSP
- HTML and cascading style sheets (CSS)
- XML and XML DTD



---

## 2 Branding Your Instance

---

### In This Chapter:

- *Working with Cascading Style Sheets*
    - *Controlling Fonts and Colors*
    - *PPM Dashboard Style Sheets*
    - *Non-Dashboard Style Sheets*
  - *Customizing the Standard Interface*
    - *Changing the Corporate Logos*
    - *Changing the Fonts*
    - *Changing the Colors*
    - *Changing the Sign Out Button Borders or Text*
-

# Working with Cascading Style Sheets

## Controlling Fonts and Colors

Font characteristics, as well as foreground and background colors, are formatted using standard HTML cascading style sheets (CSS files). Style classes, defined in these CSS files, are used to centralize the definitions of font characteristics (such as family, point size, and color) along with the colors to be used for the background and foreground.

Editing the CSS files allows you to change the fonts and colors to conform to your company's guidelines. You should be familiar with cascading style sheets before making any changes to the CSS files provided with PPM Center.

Some of the CSS files provided with PPM Center are language-specific. The file names associated with languages read from right to left (such as Hebrew) end in `_rtl.css` whereas the file names for languages read from left to right (such as English) *may* end in `_ltr.css` or *may not* have any "directional" notation. For these types of CSS files, it is necessary to change only those CSS files corresponding to the language used on your PPM Center instance.

### Font Usage

In general, the font family used throughout PPM Center is Arial, Verdana, sans-serif. The text color is white, blue, or black (or nearly so), depending on the background color. Also, if the text is displayed on a button, the color may change when you hover over or click the button.

### Color Usage

Given the variety of visual elements displayed in the standard interface, numerous colors have been defined within the product and its CSS files. Keep in mind that some colors are specific to supporting features like progress bars, health conditions, charts, or outlines.

Many of the colors provided in PPM Center may already complement your corporate color scheme and will not require any modification. However, some of the more vivid colors and highlights may require changes to conform to, or supplement, your company color and branding policies. To assist you in making optional color choices, see [Appendix A, Color Names, on page 65](#), for information about color names, hexadecimal codes, and where to view color samples.

## PPM Dashboard Style Sheets

Style sheets that support the PPM Dashboard are included in the `Dashboard.war` file. To access and update these files you must work with the archive file itself. Additionally, for the changes to be reflected on your PPM Center instance, the instance must be stopped and restarted.

To modify the PPM Dashboard style sheets:

1. Copy the `<PPM_Home>/server/kintana/deploy/Dashboard.war` file to a “working” location.

Remember that you should have a backup copy of this file stored in a safe location.

2. Extract the CSS files from the archive.
3. Edit the temporary version of the CSS files as desired.
4. Insert these updated CSS files back into the archive file.
5. Copy the updated `Dashboard.war` file to `<PPM_Home>/server/kintana/deploy/Dashboard.war`, overwriting the existing file.

You should also place a copy of this updated file in a safe location where it does not overwrite the original (or any previously updated) file.

6. Stop, then restart the PPM Server.
7. (Optional) Verify the changes by logging onto PPM Center and viewing the PPM Dashboard page(s) you intended to affect.

## Non-Dashboard Style Sheets

Style sheets for the various non-Dashboard applications are stored in a variety of locations on the PPM Server. Changes made to these files do not require a restart of the PPM Server to become effective.

To modify non-Dashboard style sheets:

1. Copy the desired style sheet to a “working” location.

Remember that you should have a backup copy of this file stored in a safe location.

2. Edit the temporary version of the CSS file as desired.

- Copy the updated CSS file to its original location on the PPM Server, overwriting the existing file.

You should also place a copy of this updated file in a safe location where it does not overwrite the original (or any previously updated) file.

- (Optional) Verify the changes by logging off, then logging back onto PPM Center and viewing the page(s) you intended to affect.

## Customizing the Standard Interface

### Changing the Corporate Logos

The corporate logos identified in *Table 2-1* are some of those used in the PPM Center standard interface. You may want to change all or only a few of the ones shown, based on your product licensing and the amount of re-branding you want to accomplish.

Table 2-1. Corporate logo files used in the PPM Center standard interface  
(page 1 of 2)







Image	File Location	Size (in pixels)
<b>Stored on the PPM Server File System</b>		
	<ul style="list-style-type: none"> <li>&lt;PPM_Home&gt;/server/kintana/deploy/itg.war/images/common/CorporateBrand.gif</li> <li>&lt;PPM_Home&gt;/server/kintana/deploy/itg.war/web/knta/global/images/en/CorporateBrand.gif</li> <li>&lt;PPM_Home&gt;/pdf/images/CorporateBrand.gif</li> </ul>	425 x 25
	<ul style="list-style-type: none"> <li>&lt;PPM_Home&gt;/server/kintana/deploy/itg.war/web/knta/global/images/en/CorporateBrand2.gif</li> </ul>	31 x 28
	<ul style="list-style-type: none"> <li>&lt;PPM_Home&gt;/server/kintana/deploy/itg.war/web/knta/global/images/en/CorporateBrand-windoid.gif</li> </ul>	50 x 28
	<ul style="list-style-type: none"> <li>&lt;PPM_Home&gt;/server/kintana/deploy/itg.war/web/knta/global/images/favicon-whiteonred.ico</li> </ul>	16 x 16

Table 2-1. Corporate logo files used in the PPM Center standard interface  
(page 2 of 2)

Image	File Location	Size (in pixels)
	<ul style="list-style-type: none"> <li>■ &lt;PPM_Home&gt;/server/kintana/deploy/itg.war/images/common/HP-invent-logo.gif</li> <li>■ &lt;PPM_Home&gt;/server/kintana/deploy/itg.war/web/knta/global/images/HP-invent-logo.gif</li> </ul>	63 x 55
	<ul style="list-style-type: none"> <li>■ &lt;PPM_Home&gt;/server/kintana/deploy/itg.war/images/common/login-image.gif</li> <li>■ &lt;PPM_HOME&gt;/server/kintana/deploy/itg.war/web/knta/global/images/login-image.gif</li> </ul>	409 x 287
	<ul style="list-style-type: none"> <li>■ &lt;PPM_Home&gt;/server/kintana/deploy/itg.war/html/HP-icon-big.gif</li> </ul>	32 x 32
	<ul style="list-style-type: none"> <li>■ &lt;PPM_Home&gt;/server/kintana/deploy/itg.war/html/HP-icon-small.gif</li> </ul>	16 x 16
	<ul style="list-style-type: none"> <li>■ &lt;PPM_Home&gt;/server/kintana/deploy/itg.war/html/MercurySplash-70.gif</li> </ul>	450 x 301
	<ul style="list-style-type: none"> <li>■ &lt;PPM_Home&gt;/server/kintana/deploy/itg.war/images/pm/PDFlogo.jpg</li> </ul>	133 x 21
<b>Stored in the Dashboard.war File on the PPM Server</b>		
	<ul style="list-style-type: none"> <li>■ arch\images\HP-logo.gif</li> </ul>	35 x 28

## Changing the Fonts

Although the fonts can be changed, doing so can have unexpected and undesirable results on the quality and readability of the PDF files exported from the PPM Center product. The PDF generation processes support a limited (and varying) assortment of fonts; therefore, HP strongly recommends that you rely on the existing settings.

## Changing the Colors

The current PPM Center banner consists of two ribbons, the upper in blue and the lower in gray (see *Figure 1-1* on page 13). Similarly, many other visual elements in the standard interface use a similar combination of ribbons or rules (*Figure 1-2* on page 14 and *Figure 1-3* on page 15).

If your corporate color scheme includes only one color, this color would be the most likely candidate to replace the blue (#003366) used in these visual elements of the standard interface. However, if your color palette includes multiple colors, you may also want to use one of your other colors to replace the gray (#928E89) elements.

The following table identifies the files where these colors are defined for the major visual elements.

Table 2-2. Files using corporate colors (page 1 of 6)

File Location	Class
<b>Cascading Style Sheets Stored on the PPM Server File System</b>	
<PPM_Home>/server/kintana/deploy/itg.war/css/common/AutoCompStyleSheet.css	<b>Blue:</b> <ul style="list-style-type: none"> <li>■ .ac-banner</li> <li>■ .ac-available-iframe</li> <li>■ .ac-selected-iframe</li> <li>■ .ac-data-iframe</li> </ul>
<PPM_Home>/server/kintana/deploy/itg.war/web/knta/global/css/AutoCompStyleSheet.css	<b>Blue:</b> <ul style="list-style-type: none"> <li>■ .ac-banner</li> <li>■ .ac-available-iframe</li> <li>■ .ac-selected-iframe</li> <li>■ .ac-data-iframe</li> </ul>
<PPM_Home>/server/kintana/deploy/itg.war/css/common/Dialog.css	<b>Blue:</b> <ul style="list-style-type: none"> <li>■ .pagetitle-mediumrule</li> <li>■ .dialog-pagetitle-mediumrule</li> </ul>



Table 2-2. Files using corporate colors (page 2 of 6)

File Location	Class
<PPM_Home>/pdf/DocStylesheet.css	<p><b>Blue:</b></p> <ul style="list-style-type: none"> <li>■ .footer-rule</li> <li>■ .additional-information</li> <li>■ .helpful-text-rule</li> <li>■ .windoid-header</li> <li>■ .warning-text</li> <li>■ .header</li> <li>■ .pagetitle-mediumrule</li> <li>■ .thin-rule</li> <li>■ .thick-rule</li> <li>■ .medium-rule</li> </ul> <p><b>Gray:</b></p> <ul style="list-style-type: none"> <li>■ .windoid-header</li> <li>■ .windoid-footer</li> </ul>
<PPM_Home>/server/kintana/deploy/itg.war/css/pm/EnterTime.css	<p><b>Blue:</b></p> <ul style="list-style-type: none"> <li>■ .time-tab-header</li> </ul>
<PPM_Home>/server/kintana/deploy/itg.war/web/knta/global/css/FileDialogChooserStyleSheet.css	<p><b>Blue:</b></p> <ul style="list-style-type: none"> <li>■ .fd-data-iframe</li> </ul>

Table 2-2. Files using corporate colors (page 3 of 6)

File Location	Class
<p>&lt;PPM_Home&gt;/server/kintana/deploy/ itg.war/web/knta/global/css/ GlobalStyleSheet.css</p>	<p><b>Blue:</b></p> <ul style="list-style-type: none"> <li>■ .mainbanner</li> <li>■ .header</li> <li>■ .header-no-side-padding</li> <li>■ .header-expandable</li> <li>■ table.ov-frame-outer</li> <li>■ .persborder1</li> <li>■ .persSecHeader</li> <li>■ .pagetitle-heavyrule</li> <li>■ .pagetitle-mediumrule</li> <li>■ .thin-rule</li> <li>■ .thick-rule</li> <li>■ .medium-rule</li> <li>■ .medium-rule-fixed-width</li> <li>■ .medium-rule-secondary</li> <li>■ .footer-rule</li> <li>■ .footer-rule-t</li> <li>■ .header-simple-title</li> <li>■ .windoid-header</li> <li>■ .tab-header</li> </ul> <p><b>Gray:</b></p> <ul style="list-style-type: none"> <li>■ .centerbanner</li> <li>■ .windoid-header</li> <li>■ .windoid-footer</li> </ul>

Table 2-2. Files using corporate colors (page 4 of 6)

File Location	Class
<p>&lt;PPM_Home&gt;/server/kintana/deploy/itg.war/web/knta/global/css/Print.css</p>	<p><b>Blue:</b></p> <ul style="list-style-type: none"> <li>■ .mainbanner</li> <li>■ .header-no-side-padding</li> <li>■ .header-expandable</li> <li>■ table.ov-frame-outer</li> <li>■ .persborder1</li> <li>■ .persSecHeader</li> <li>■ .pagetitle-heavyrule</li> <li>■ .pagetitle-mediumrule</li> <li>■ .thin-rule</li> <li>■ .thick-rule</li> <li>■ .medium-rule</li> <li>■ .medium-rule-fixed-width</li> <li>■ .medium-rule-secondary</li> <li>■ .footer-rule-t</li> <li>■ .header-simple-title</li> <li>■ .windoid-header</li> <li>■ .tab-header</li> </ul> <p><b>Gray:</b></p> <ul style="list-style-type: none"> <li>■ .centerbanner</li> <li>■ .windoid-header</li> <li>■ .windoid-footer</li> </ul>

Table 2-2. Files using corporate colors (page 5 of 6)

File Location	Class
<p>&lt;PPM_Home&gt;/server/kintana/deploy/itg.war/htmlTemplates/Print.css</p>	<p><b>Blue:</b></p> <ul style="list-style-type: none"> <li>■ .mainbanner</li> <li>■ .header-no-side-padding</li> <li>■ .header-expandable</li> <li>■ table.ov-frame-outer</li> <li>■ .persborder1</li> <li>■ .persSecHeader</li> <li>■ .pagetitle-heavyrule</li> <li>■ .pagetitle-mediumrule</li> <li>■ .thin-rule</li> <li>■ .thick-rule</li> <li>■ .medium-rule</li> <li>■ .medium-rule-fixed-width</li> <li>■ .medium-rule-secondary</li> <li>■ .footer-rule-t</li> <li>■ .header-simple-title</li> <li>■ .windoid-header</li> <li>■ .tab-header</li> </ul> <p><b>Gray:</b></p> <ul style="list-style-type: none"> <li>■ .centerbanner</li> <li>■ .windoid-header</li> <li>■ .windoid-footer</li> </ul>
<p>&lt;PPM_Home&gt;/server/kintana/deploy/itg.war/web/knta/rpt/css/reportGlobal.css</p>	<p><b>Blue:</b></p> <ul style="list-style-type: none"> <li>■ span.secHdrFGBanner</li> </ul>
<p>&lt;PPM_Home&gt;/server/kintana/deploy/itg.war/css/pm/WBS.css</p>	<p><b>Blue:</b></p> <ul style="list-style-type: none"> <li>■ .footer-rule</li> <li>■ .tab-header</li> </ul>
<b>JSP Files Stored on the PPM Server File System</b>	
<p>&lt;PPM_Home&gt;/server/kintana/deploy/itg.war/web/knta/global/Logon.jsp</p>	<p><b>Blue:</b></p> <ul style="list-style-type: none"> <li>■ in-line CSS; look for bgcolor="#003366"</li> </ul> <p><b>Light gray:</b></p> <ul style="list-style-type: none"> <li>■ in-line CSS; look for bgcolor="#cecece"</li> </ul>

Table 2-2. Files using corporate colors (page 6 of 6)

File Location	Class
<PPM_Home>/server/kintana/deploy/itg.war/web/knta/global/ResultsLayout.jsp	<b>Blue:</b> <ul style="list-style-type: none"> <li>■ in-line CSS; look for background-color: #003366</li> </ul>
<b>Stored in the Dashboard.war File on the PPM Server</b>	
arch/css/df-portal.css	<b>Blue:</b> <ul style="list-style-type: none"> <li>■ .top-line</li> <li>■ .top-line-top</li> <li>■ .top-line-bottom</li> <li>■ .editor-line-top</li> <li>■ .bottom-line</li> <li>■ .bottom-line-top</li> <li>■ .form-header</li> <li>■ .expandable-form-header</li> <li>■ table.portlet-frame-outer</li> <li>■ table.portlet-frame-outer-drag</li> <li>■ table.portlet-box-outer</li> <li>■ table.selected-portlet-box-outer</li> <li>■ .windoid-header</li> <li>■ td.ac-banner</li> <li>■ .ac-available-iframe</li> <li>■ .ac-selected-iframe</li> <li>■ table.ac-buttons-area-outer</li> <li>■ .ac-data-iframe</li> <li>■ table.ac-order-buttons-area-outer</li> <li>■ tr.windoid-banner</li> </ul>
arch/css/df-portal.css (continued)	<b>Blue (continued):</b> <ul style="list-style-type: none"> <li>■ td.multiple-drilldown-border-top</li> <li>■ td.multiple-drilldown-border-right</li> <li>■ .error_header</li> <li>■ .error_footer</li> </ul> <b>Gray:</b> <ul style="list-style-type: none"> <li>■ .windoid-footer</li> <li>■ body.windoid-body</li> <li>■ td.windoid-banner</li> </ul>

## Changing the Sign Out Button Borders or Text

If the color of the blue ribbon in the banner is changed, the text or the border of the **Sign Out** button may “disappear” or may not complement your new color choice. Consequently, you may want to change the border colors to better coordinate with your color selection, or to better identify the button.

To change the color of the **Sign Out** button borders and text:

1. Copy the `<PPM_Home>/server/kintana/deploy/itg.war/web/knta/global/css/GlobalStyleSheet.css` file to a “working” location.

Remember that you should have a backup copy of this file stored in a safe location.

2. Open the temporary file for edit.
3. Locate and change the color settings used in the following classes:
  - `span.signOutBtn1`
  - `span.signOutBtn1 A`
4. Save and close the file.
5. Copy the updated file to its original location on the PPM Server, overwriting the existing file.

You should also place a copy of this updated file in a safe location where it does not overwrite the original (or any previously updated) file.

6. (Optional) Verify the changes by logging off, then logging back onto PPM Center and viewing the **Sign Out** button.

---

## 3 Customizing Your Instance

---

### In This Chapter:

- *Enhancing the Logon Page*
  - *Identifying an Instance*
  - *Changing Menu Item Text*
  - *Specifying Portlet Field Colors*
-

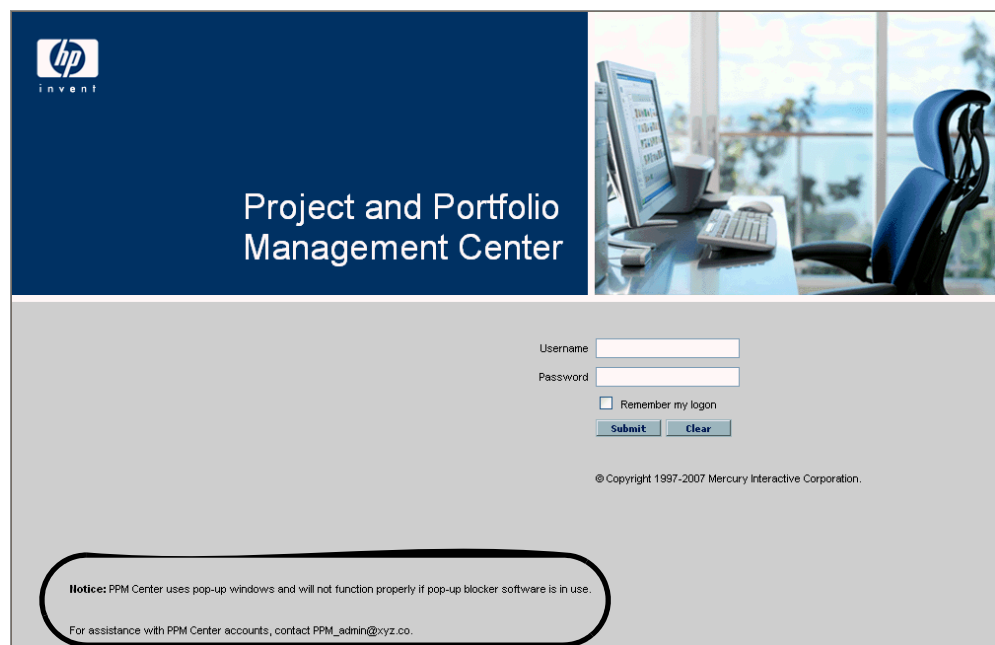
## Enhancing the Logon Page

You may want to provide site-specific information on the logon page of your PPM Center instance to help the users in your organization . This could include the following types of information (among many others):

- Site administration contact information
- System availability notices
- Site-specific licensing and usage details
- Client-specific advice

*Figure 3-1* shows a page containing advisory information about client configuration. The page also provides contact details for the instance administrator.

Figure 3-1. Custom logon page



hp  
invent

### Project and Portfolio Management Center

Username

Password

Remember my logon

© Copyright 1997-2007 Mercury Interactive Corporation.

**Notice:** PPM Center uses pop-up windows and will not function properly if pop-up blocker software is in use.

For assistance with PPM Center accounts, contact PPM\_admin@xyz.co.



To customize your logon page:

1. In a “working” location, create a new JSP file that contains the details that you want to display.

This file will ultimately reside in the `<PPM_Home>/server/itgdev/deploy/itg.war/web/knta/global/` directory and must have a unique file name.

For example, you might create the following file named `PPM_Notice.jsp`:

```
<table border='0' cellspacing='0' cellpadding='0'
width='100%'>
<tr>
<td width='50'>&nbsp;</td><td width='800' class='normal-
text'>
<br/><br/>
<b>Notice:</b> PPM Center uses pop-up windows and will not
function properly if pop-up blocker software is in use.
</tr>
<tr><td>&nbsp;</td><td class='normal-text'>
<br/><br/>
For assistance with PPM Center accounts, contact PPM_
admin@xyz.co.
<br/>
<br/>
</tr>
</table>
```

You should also place a copy of this updated file in a safe location where it does not overwrite any previously updated version of the file.

2. Copy the `<PPM_Home>/server/kintana/deploy/itg.war/web/knta/global/Logon.jsp` file to the “working” location.

Remember that you should have a backup copy of this file stored in a safe location.

3. Edit the temporary version of the `Logon.jsp` file as follows:

Immediately *before* the `</form>` tag, insert text similar to the following, substituting the name of the file you created in [step 1](#) for `PPM_Notice.jsp`.

```
<jsp:include page="PPM_Notice.jsp"/>
```

4. Save and close the file.

Remember that you should also have a backup copy of this modified file stored in a safe location.

5. Copy the `Logon.jsp` file *and* the file you created in [step 1](#) to the `<PPM_Home>/server/kintana/deploy/itg.war/web/knta/global/` directory on your PPM Server.
6. Stop, then restart the PPM Server.
7. (Optional) Verify the changes by logging off, then logging back onto PPM Center and viewing the you intended to affect.

## Identifying an Instance

If your site includes multiple PPM Center instances, it may be desirable to include identification of the instance in the banner. For example, if you have both a Test and Production instance, you might want the Test instance to be readily distinguishable from the Production instance.

The simplest way to accommodate this is to modify the `CorporateBrand.gif` file that appears in the blue ribbon of the banner and make the changes as detailed in [Chapter 2, \*Branding Your Instance\*](#), on page 19.



Keep in mind that you would not want to deploy this customized image file to your Production instance.

## Changing Menu Item Text

In rare circumstances, it may be meaningful to change the text that appears on the menu bar. For example, menu item text may be changed to match (or complement) the names of other products used within your company thereby emphasizing concepts such as processes, integrations, or policies, or the text might be modified to provide additional site-specific details associated with that particular menu item.

Menu text is controlled in XML files, which utilizes localization files for each supported language. In general, there are separate files for each first-level menu item and its subordinate entries. The files are located in the `<PPM_Home>/conf/menus` directory on the PPM Server. [Table 3-1](#) identifies the files associated with each menu group (as shown in [Figure 1-1](#) on page 13).



Whenever you make changes to these menu files, you will be overriding the localized values for the text.

Table 3-1. Menu group files

Menu Group	File
Dashboard	core_menu.xml
Demand Management	demand_management.xml
Project Management	project_management.xml
Time Management	time_management.xml
Resource Management	resource_management.xml
Program Management	pmo_management.xml
Portfolio Management	portfolio_management.xml
Financial Management	cost_management.xml
Deployment Management	deployment_management.xml
Reports	core_menu.xml
Administration	admin_menu.xml
Product Information	core_menu.xml

To change the text for a menu item:

1. Copy the appropriate menu group file to a “working” location.

Remember that you should have a backup copy of this file stored in a safe location.

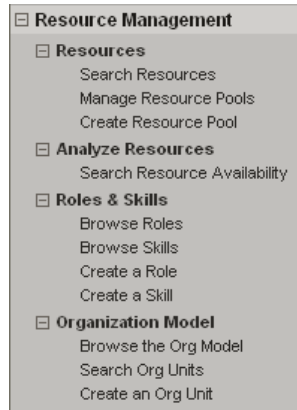
2. Edit the temporary file as desired.

See the `resource_management.xml` file in [Appendix B, Sample Files](#), on page 71 for an example.

- a. Identify the menu item you want to change.

Either click **Expand All** or expand all the menus and submenus in the menu group where you want to make the modification.

Information similar to the following will be displayed.



- b. Locate the XML element containing the text you want to change.

The various menu items use the following XML tags:

- First-level menu titles (such as **Resource Management**) use `<title_RESOURCE>`
- Expandable menu items (such as **Analyze Resources**) use `<menu_title_RESOURCE>`

Note that menus can be nested.

- Non-expandable menu items (such as **Search Org Units**) use `<display_text_RESOURCE>`

Since the value (of each element) is the file name for the localization file, it may not be obvious which entry actually contains the text you want to change. In general, the order in which the menu items appear in PPM Center matches the order in the XML file.



To assist with identification, HP has attempted to name the localization files the same as (or very similar to) the English-language text for the menu item.

For example, the XML for the **Search Resource Availability** menu item is as follows:

```
<display_text_RESOURCE>SEARCH_RESOURCE_AVAILABILITY_MENU_
TEXT.TXT</display_text_RESOURCE>
```

- c. To change the value of the text, you must first disassociate the localization file by changing the XML tag (and its corresponding closing tag) by removing the “\_RESOURCE” portion of the tag name.

For example, non-expandable menu item tags would change as follows:

From:

- `<display_text_RESOURCE>`
- `</display_text_RESOURCE>`

To:

- `<display_text>`
- `</display_text>`

- d. Replace the name of the localization file with the actual text you want to appear in the menu.

For example, use the following XML (in the exact same location in the XML file) to change from the text contained in the localization file for the **Search Resource Availability** menu item (as shown in [step b on page 36](#)) to the string “Review Resource Utilization.”

```
<display_text>Review Resource Utilization</display_text>
```

3. Save and close the file.

If you are using non-standard (foreign language) characters, such as â, ç, é, ö, or ñ, make sure you encode the file in UTF-8 format.



Microsoft® Notepad supports UTF-8 encoding when using the **Save As** functionality.

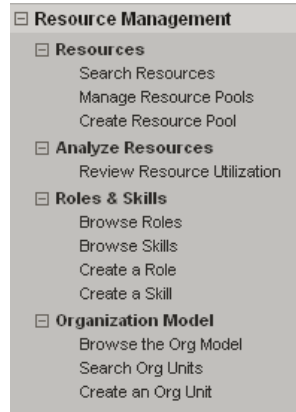
4. Copy the updated XML file to its original location on the PPM Server, overwriting the existing file.

You should also place a copy of this updated file in a safe location where it does not overwrite the original (or any previously updated) file.

5. Stop, then restart the PPM Server.

6. (Optional) Verify the changes by logging off, then logging back onto PPM Center and reviewing the menu item.

Continuing with the example, the resulting menu would be similar to the following:



## Specifying Portlet Field Colors

Occasionally, you may want to display portlet fields (having identical field labels) with the same color, regardless of the portlet in which they appear. For example, you may always want the colors red, amber, and green used for all portlet fields labeled High, Medium, and Low.

It is possible to specify a color in each and every portlet definition where the desired field is used; however, functionality exists that allows you to control colors for portlet fields on an instance-wide basis.

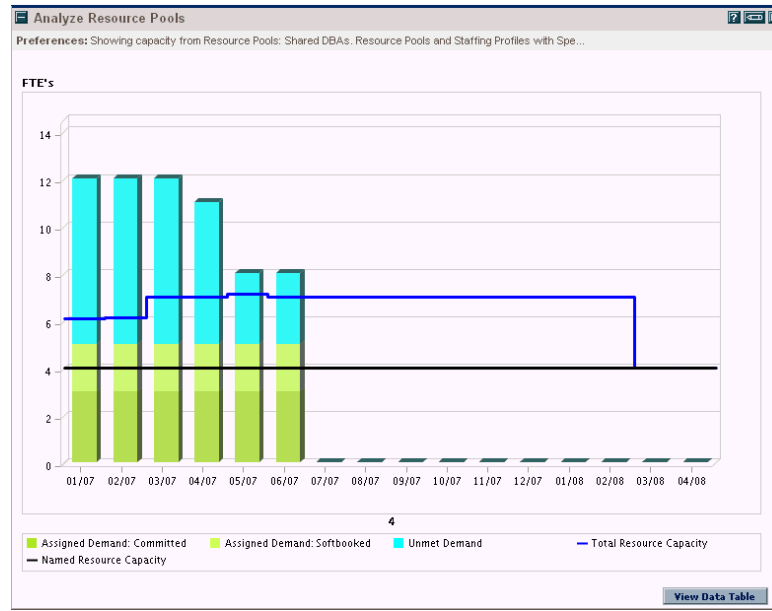
To specify global color usage for individual field labels:

1. Copy the `<PPM_Home>/server/kintana/deploy/itg.war/web/knta/dsh/portlet/css/ColorPalette.css` file to a “working” location.

Remember that you should have a backup copy of this file stored in a safe location.

2. Edit the temporary version of the CSS file as desired.
  - a. Identify the field labels you want to control and decide upon the color to use for each.

An existing portlet may be similar to the following:



For example, you may want to use the following colors for these field labels whenever they are used in *any* of your PPM Center portlets.

- Red (#FF0000) for Unmet Demand
- Amber (#FFA500) for Assigned Demand: Softbooked
- Green (#008000) for Assigned Demand: Committed

- b. Add the new color specification and label information as follows, making sure that you match the capitalization, spelling, and punctuation that appears in the legend of the portlet.

```
color: '#008000' label: 'Assigned Demand: Committed';
color: '#FFA500' label: 'Assigned Demand: Softbooked';
color: '#FF0000' label: 'Unmet Demand';
```



If the number of color entries in the `ColorPalette.css` (or `ColorPalette_rtl.css`) file exceeds 1000, you must expand the size of the cache for this file. Increase the value of the `COLOR_CACHE_SIZE` parameter in the `server.conf` file to accommodate the revised number of entries in the `ColorPalette.css` file. HP recommends that you exceed the actual number of entries to allow for future use (growth) of the `ColorPalette.css` file.

3. Save and close the file.
4. Copy the updated `ColorPalette.css` file to its original location of the PPM Server, overwriting the existing file.

You should also place a copy of this updated file in a safe location where it does not overwrite the original (or any previously updated) file.

5. Re-load the updated file by pointing your browser to the following URL:

`<server>:<port>/itg/web/knta/admin/initColorPalette.jsp`

where the placeholders represent the following:

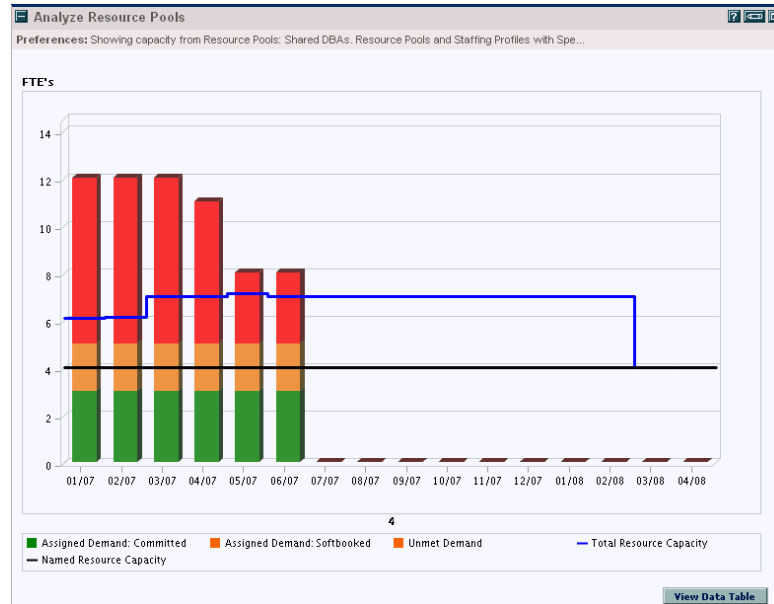
`<server>` the host name or IP address of your PPM Center instance

`<port>` the port number where your PPM Center instance is accessible

A confirmation message is displayed.

6. (Optional) Verify the changes by logging onto PPM Center and viewing the PPM Dashboard page(s) you intended to affect.

The resulting portlet would be similar to the following:





---

# 4 Customizing Your Documentation Library

---

## In This Chapter:

- *Working with the Library*
  - *Removing Unnecessary Product Documents*
  - *Adding Documents for PPM Center Supplemental Products*
  - *Adding Site-Specific Documents*
  - *Supported File Type Icons*
-

## Working with the Library

The names and information for the documents displayed on the various PPM Documentation Library pages are controlled using XML files and their XML DTD component. This data is then rendered using JavaScript files deployed on PPM Center.

Due to underlying infrastructural differences, JavaScript relies on different libraries to render Web pages for various browsers.



If you plan to customize the PPM Documentation Library you should have both Internet Explorer and Mozilla Firefox installed on a client system and test your changes using both Web browsers.

## Removing Unnecessary Product Documents

The PPM Documentation Library “home” page includes all the documents provided with the “core” release of the product. Therefore, when users view the PPM Documentation Library page, they are presented with the entire list of documents.

To help users find documents more easily in version 7, the PPM Documentation Library page was enhanced to include the ability to view the document list based on a user’s role. Since this functionality is not license-based, the user must identify the role interactively.

This new functionality is especially helpful when there are multiple documents associated with a role, and there are multiple PPM Center applications licensed on this instance. However, if (for example) your PPM Center instance is used solely for HP Deployment Management purposes, few of your users would be interested in documentation for other PPM Center applications, such as HP Time Management or HP Program Management.

In these rare cases, you can remove the entries for these extraneous applications; however, the functionality to view document list based on a role is compromised.

Before making changes to the XML file, it is important to understand the construct of the data and the resulting presentation of the information. The `Library.dtd` file defines the legal building blocks for the PPM Documentation Library.

The most significant aspects of the XML organization includes the following:

- **Sections.** Information is presented in two columns, using the left and right halves of the page.

This data uses the <leftsection> and <rightsection> elements. Each section must include at least one group.

- **Groups.** Collections of related documents are categorized in the left or right half of the page (such as **General Interest** or **Configuration Guides** as shown in *Figure 4-1*).

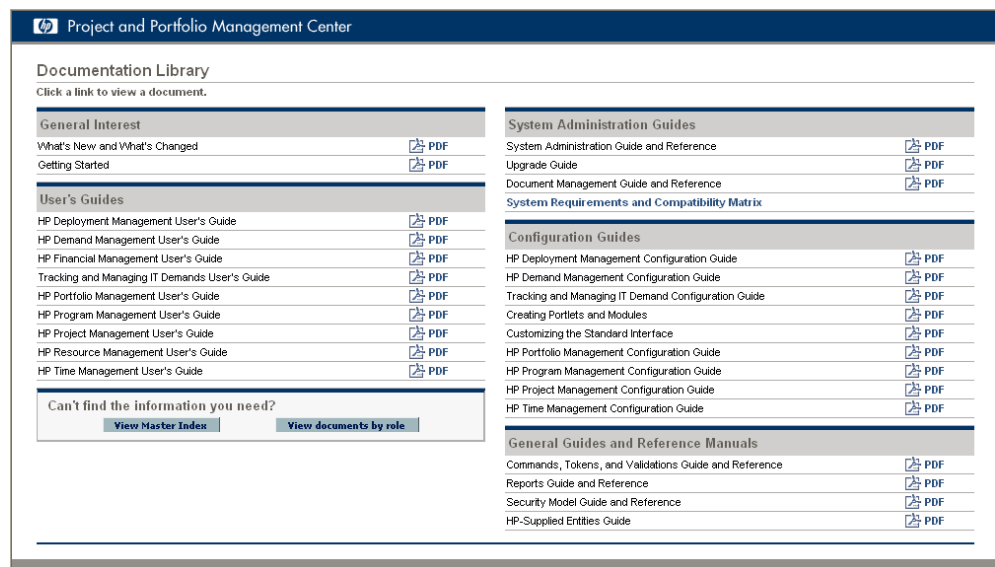
This data uses the <group> element. A group must contain a heading element (composed of a title and optionally, a description), an optional subheading (also composed of a title and an optional description), and at least one document element.

- **Documents.** Titles and links that specify product documents (such as **Getting Started** and **Customizing the Standard Interface**) are presented within groups.

This data relies on the <document> element. A document must contain the title of the document, the relative path of the file, and additional optional details.

In addition to document-specific details and presentation, the XML file identifies the relative path of the master index (using the <masterindex> element) and also provides details for each of the supported roles (using the <rolelist> element). For your convenience, the Library.dtd file is included in *Appendix B, Sample Files*, on page 71.

Figure 4-1. PPM Documentation Library page



To remove unnecessary documents from the PPM Documentation Library:

1. Copy the `<PPM_Home>/pdf/Library.xml` file to a “working” location.

Remember that you should have a backup copy of this file stored in a safe location.

2. Edit the temporary version of the XML file as desired.



Do *not* make changes to the `<masterindex>` or `<roledist>` elements.

In general, you will delete the `<document>` element for each document you do not want displayed. In extremely rare cases, all documents might be removed from a group (or sub-group) making it feasible to also remove the `<group>` or `<subhead>` elements.

For example, assume that your site licensed only HP Deployment Management, does not use the Document Management module, and did not upgrade from a prior version of PPM Center. The following XML snippet would provide the list of documents pertinent to your site.

```
<leftsection>
  <group>
    <head>
      <htitle>General Interest</htitle></head>
    <document>
      <dttitle>What's New and What's Changed</dttitle>
      <dfn>en/WhatsNew.pdf</dfn>
      <daud>
        <rid>ALL</rid></daud>
    </document>
    <document>
      <dttitle>Getting Started</dttitle>
      <dfn>en/GetStart</dfn>
      <daud>
        <rid>ALL</rid></daud>
    </document>
  </group>
  <group>
    <head>
      <htitle>User's Guides</htitle></head>
    <document>
      <dttitle>HP Deployment Management User's Guide</dttitle>
      <dfn>en/DeployUG.pdf</dfn>
    </document>
  </group>
</leftsection>

<rightsection>
  <group>
    <head>
```

```

    <h1>System Administration Guides</h1></head>
<document>
  <dt>System Administration Guide and Reference</dt>
  <dfn>en/SysAdmin.pdf</dfn>
  <daud>
    <rid>SSA</rid></daud>
</document>

<document>
  <dt>Upgrade Guide</dt>
  <dfn>en/Upgrade.pdf</dfn>
  <daud>
    <rid>SSA</rid></daud>
</document>

<document>
  <dt>System Requirements and Compatibility Matrix</dt>
  <dfn>NONE</dfn>
  <dhtml>en/DLC.htm</dhtml>
  <daud>
    <rid>SSA</rid></daud>
</document>
</group>

<group>
  <head>
    <h1>Configuration Guides</h1></head>

  <document>
    <dt>HP Deployment Management Configuration Guide</dt>
    <dfn>en/DeployCG.pdf</dfn>
    <daud>
      <rid>CAC</rid></daud>
  </document>

  <document>
    <dt>Creating Portlets and Modules</dt>
    <dfn>en/ConfigSI.pdf</dfn>
    <daud>
      <rid>CAC</rid></daud>
  </document>

  <document>
    <dt>Customizing the Standard Interface</dt>
    <dfn>en/CustomSI.pdf</dfn>
    <daud>
      <rid>CAC</rid></daud>
  </document>
</group>

<group>
  <head>
    <h1>General Guides and Reference Manuals</h1></head>

  <document>
    <dt>Commands, Tokens, and Validations Guide and Reference</dt>
    <dfn>en/CmdTokVal.pdf</dfn>
  </document>

  <document>
    <dt>Reports Guide and Reference</dt>
    <dfn>en/Reports.pdf</dfn>
  </document>

  <document>
    <dt>Security Model Guide and Reference</dt>
    <dfn>en/Security.pdf</dfn>
  </document>

  <document>
    <dt>HP-Supplied Entities Guide</dt>
    <dfn>en/Entities.pdf</dfn>
  </document>

```

```
</group>
</rightsection>
```

3. Save and close the file.
4. Copy the updated XML file to its original location on the PPM Server, overwriting the existing file.

You should also place a copy of this updated file in a safe location where it does not overwrite the original (or any previously updated) file.

5. Verify the changes by opening the PPM Documentation Library page.



Test the updated PPM Documentation Library using both Internet Explorer and Mozilla Firefox.

The resulting PPM Documentation Library “home” page would be similar to the following:

The screenshot shows the 'Project and Portfolio Management Center' header. Below it is the 'Documentation Library' section with the instruction 'Click a link to view a document.' The page is organized into several categories:

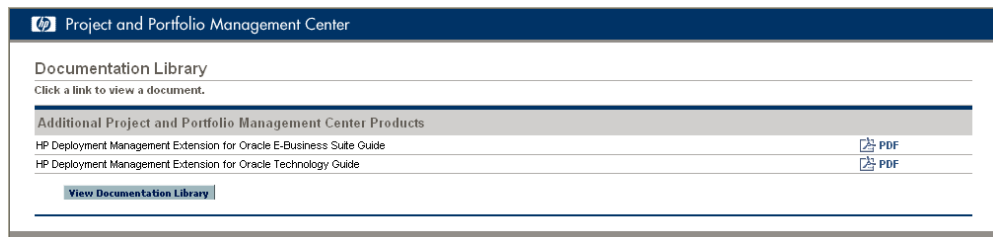
- General Interest:**
  - What's New and What's Changed (PDF)
  - Getting Started (PDF)
- User's Guides:**
  - HP Deployment Management User's Guide (PDF)
- System Administration Guides:**
  - System Administration Guide and Reference (PDF)
  - System Requirements and Compatibility Matrix
- Configuration Guides:**
  - HP Deployment Management Configuration Guide (PDF)
  - Creating Portlets and Modules (PDF)
  - Customizing the Standard Interface (PDF)
- General Guides and Reference Manuals:**
  - Commands, Tokens, and Validations Guide and Reference (PDF)
  - Reports Guide and Reference (PDF)
  - Security Model Guide and Reference (PDF)
  - HP-Supplied Entities Guide (PDF)

At the bottom of the 'User's Guides' section, there are two buttons: 'View Master Index' and 'View documents by role'.

## Adding Documents for PPM Center Supplemental Products

Several software packages are offered by HP that complement the PPM Center product. This includes an assortment of Extensions, Migrators, Adapters, Accelerators, and integration suites. These products often include documentation that is available from the PPM Download Center only (and not installed on the PPM Server). It is often desirable to make these documents available to all PPM Center users, as shown in the following figure.

Figure 4-2. Supplemental product documentation page



To include supplemental product documentation such that it is accessible from the PPM Documentation Library:

1. Copy the `<PPM_Home>/pdf/Cameo.xml` file to a “working” location.

Remember that you should have a backup copy of this file stored in a safe location.

2. Edit the temporary version of the XML file as follows.
  - a. Within the `<section>` element, insert a `<document>` element similar to the following:

```
<document>
  <dtitle>sample_title</dtitle>
  <dfn>sample_doc.pdf</dfn>
  <dtype>pdf</dtype>
</document>
```



If the file type is PDF, the `<dtype>` element does not have to be included.

b. Substitute values in this new `<document>` element as follows:

- The title of the document for `sample_title`
- The relative path of the documentation file for `sample_doc.pdf`

This path should correspond to the language for the document and therefore typically starts with `en/`.

- The file type of the documentation file for `pdf`

File types are described in *Supported File Type Icons* on page 53.

If, for example, you were adding documentation for the HP Deployment Management Extension for Oracle E-Business Suite and HP Deployment Management Extension for Oracle Technology, the XML file would be similar to the following:

```
<?xml version="1.0" ?>
<!DOCTYPE cameo SYSTEM "Cameo.dtd">
<cameo>

  <section>

    <document>
      <dtitle>HP Deployment Management Extension for Oracle E-Business Suite
      Guide</dtitle>
      <dfn>en/ExtOracleEB.pdf</dfn>
      <dtype>pdf</dtype>
    </document>

    <document>
      <dtitle>HP Deployment Management Extension for Oracle Technology Guide</
      dtitle>
      <dfn>en/ExtOracleT.pdf</dfn>
    </document>

  </section>
</cameo>
```



The `<document>` elements can be added in any order you prefer; however, they must be contained within the `<section>` element.

3. Save and close the file.
4. Copy the updated XML file to its original location on the PPM Server, overwriting the existing file.

You should also place a copy of this updated file in a safe location where it does not overwrite the original (or any previously updated) file.

5. Copy the documentation file (whose name you substituted for `sample_doc.pdf`) to the path relative to the `<PPM_Home>/pdf/` directory on the PPM Server.

For English-language documents this is `<PPM_Home>/pdf/en/`.



6. Verify the changes by opening the PPM Documentation Library page and clicking **Additional Project and Portfolio Management Center Products** in the **Supplemental Information** group.



Test the updated PPM Documentation Library using both Internet Explorer and Mozilla Firefox.

The resulting supplemental product documentation page would be similar to that shown in *Figure 4-2 on page 47*.

If you ever want to discontinue listing supplemental products documents, copy the original `Cameo.xml` file that was delivered with the product to the `<PPM_Home>/pdf` directory on the PPM Server.



Use of this file will remove the **Additional Project and Portfolio Management Center Products** link in the **Supplemental Information** group. If there are no custom documents (as detailed in *Adding Site-Specific Documents on page 49*), the **Supplemental Information** group is not displayed.

## Adding Site-Specific Documents

PPM Center customers often create unique, site-specific documents relating to the product and its use within the enterprise.

New in version 7 is the ability to host these site-specific documents on the PPM Server and have them accessible from the PPM Documentation Library page. The intent of this enhancement is to provide users with a single location where they can find all of the documents pertinent to PPM Center. The choices of topics are up to you and could include:

- Lists of PPM Center contacts
- Processes and procedures for using PPM Center
- Microsoft PowerPoint presentations
- Conversion guides
- Guidelines for PPM Center application configuration, development, and use

Before making changes to the XML file, it is important to understand the construct of the data and the resulting presentation of the information. The `Custom.dtd` file defines the legal building blocks for the “custom” page of the PPM Documentation Library.



If you have customized the PPM Documentation Library “home” page, you will note that the organizational construct of these DTD files are very similar.

The most significant aspects of the XML organization includes the following:

- **Title.** The name of the custom page can be uniquely specified (such as “XYZ Company” as shown in *Figure 4-3*).

This data uses the `<title>` element.

- **Sections.** Information is presented in two columns, using the left and right halves of the page.

This data uses the `<leftsection>` and `<rightsection>` elements. Each section must include at least one group.

- **Groups.** Collections of related categories of documents are presented in the left or right half of the page (such as **General Interest** or **Training**).

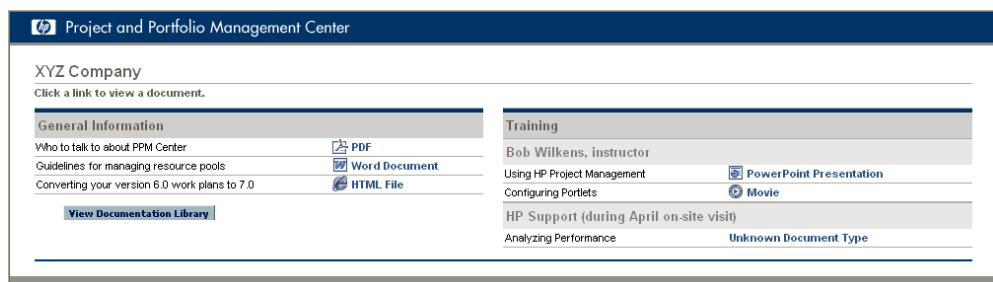
This data uses the `<group>` element. A group must contain a heading element (consisting of a title), an optional subheading (also consisting of a title), and at least one document element.

- **Documents.** Titles and links that specify site-specific documents (such as **Guidelines for managing resource pools** and **Analyzing Performance**) are presented within groups.

This data relies on the `<document>` element. A document must contain the title of the document, the file name, and a designator for the file type of the document. File types are described in *Supported File Type Icons* on page 53.

For your convenience, the `Custom.dtd` file is included in *Appendix B, Sample Files*, on page 71.

Figure 4-3. Custom documentation page



To add custom documents that are accessible from the PPM Documentation Library:

1. Copy the `<PPM_Home>/pdf/Custom/Custom.xml` file to a “working” location.

Remember that you should have a backup copy of this file stored in a safe location.

2. Edit the temporary version of the XML file as desired.

For example, assume that your site has the following documents it wants to host:

Title	Filename
Who to talk to about PPM Center	who.pdf
Guidelines for managing resource pools	respool.doc
Converting your version 6.0 work plans to 7.0	workplans.htm
Using HP Project Management	Project.ppt
Configuring Portlets	Portlets.vid
Analyzing Performance	perf.ppm

One possible presentation of this information would be as follows:

```
<?xml version="1.0" ?>
<!DOCTYPE custom SYSTEM "../Custom.dtd">
<custom>

  <leftsection>

    <group>

      <head>
        <htitle>General Information</htitle></head>

      <document>
        <dtitle>Who to talk to about PPM Center</dtitle>
        <dfn>who.pdf</dfn>
        <dtype>pdf</dtype>
      </document>

      <document>
        <dtitle>Guidelines for managing resource pools</dtitle>
        <dfn>respool.doc</dfn>
        <dtype>doc</dtype>
      </document>

      <document>
        <dtitle>Converting your version 6.0 work plans to 7.0</dtitle>
        <dfn>workplans.htm</dfn>
        <dtype>htm</dtype>
      </document>

    </group>

  </leftsection>
```

```

<rightsection>
  <group>
    <head>
      <h1>Training</h1></head>
    <subhead>
      <stitle>Bob Wilkens, instructor</stitle></subhead>
    <document>
      <dttitle>Using HP Project Management</dttitle>
      <dfn>Project.ppt</dfn>
      <dtype>ppt</dtype>
    </document>
    <document>
      <dttitle>Configuring Portlets</dttitle>
      <dfn>Portlets.vid</dfn>
      <dtype>vid</dtype>
    </document>
    <subhead>
      <stitle>HP Support (during April on-site visit)</stitle>
    </subhead>
    <document>
      <dttitle>Analyzing Performance</dttitle>
      <dfn>perf.ppm</dfn>
      <dtype>unknown</dtype>
    </document>
  </group>
</rightsection>
<title>XYZ Company</title>
</custom>

```

3. Save and close the file.
4. Copy the updated XML file to its original location on the PPM Server, overwriting the existing file.

You should also place a copy of this updated file in a safe location where it does not overwrite the original (or any previously updated) file.

5. Copy each of the files you specified in the `Custom.xml` file to the `<PPM_Home>/pdf/Custom` directory on the PPM Server.
6. Verify the changes by opening the PPM Documentation Library page and clicking **Custom Documentation** in the **Supplemental Information** group.



Test the updated page using both Internet Explorer and Mozilla Firefox.

The resulting custom documentation page would be similar to [Figure 4-3 on page 50](#).

If you ever want to discontinue listing site-specific documents, copy the original `Custom.xml` file that was delivered with the product to the `<PPM_Home>/pdf/Custom` directory on the PPM Server.



Use of this file will remove the **Custom Documentation** link in the **Supplemental Information** group. If there are no additional PPM Center product documents (as detailed in [Adding Documents for PPM Center Supplemental Products on page 47](#)), the **Supplemental Information** group is not displayed.

## Supported File Type Icons

A file type is specified so that the appropriate icon appears next to the link for the file (as shown in [Figure 4-3 on page 50](#)). The intent is to provide a visual cue indicating the type of application needed (on the client system) to view the document.



Specifying a file type does not ensure that the corresponding application is installed on the client—this is the responsibility of the user or the site’s IT department.

The case-sensitive file type designators that have corresponding icons include the following:

- doc (for Microsoft Word files)
- htm (for HTML formatted files)
- pdf (for PDF files)
- ppt (for Microsoft PowerPoint files)
- txt (for text files)
- vid (for movie files, such as AVI)
- xls (for Microsoft Excel files)

If you want to host a file whose type is not on this list, specify “unknown” or “none” for the file type.



---

# 5 Advanced Topics

---

## In This Chapter:

- *Component Overview*
  - *Identifying CSS Files and Class Definitions*
    - *Example: Finding Information for a PPM Dashboard Page*
    - *Example: Finding Information for a Non-Dashboard Page*
  - *Where to Find the Files*
  - *Modifying JSP Files*
    - *JSP Page Definitions*
    - *Guidelines for Modifying JSP Pages*
    - *Header.jsp File*
    - *Making Changes to Specific Pages*
    - *Example: JSP, CSS, and the Standard Interface*
-

## Component Overview

In the event the information provided in earlier chapters of this guide have not provided you with the details needed to customize your PPM Center instance as desired, the following information should help.

## Identifying CSS Files and Class Definitions

To identify the CSS files and class definition used for a particular page, view the page and then, use the “View Source” capability of your Web browser to identify the cascading style sheet files and class definitions pertinent to any page of PPM Center you are viewing.

### Example: Finding Information for a PPM Dashboard Page

In this example, assume that you are considering changing the title of the Budget To Budget Comparison portlet (which could potentially change the formatting for all portlet titles).

To identify the cascading style sheet and class definition:

1. Log on to PPM Center.
2. Navigate to a PPM Dashboard page that contains the Budget To Budget Comparison portlet.
3. View the HTML source for the page.
  - From Microsoft Internet Explorer, select **View > Source**.
  - From Mozilla Firefox, select **View > Page Source**.
4. Search the HTML source for the string “Budget To Budget Comparison” (the title of the portlet as it appears on the page) until you find something similar to the following text:

```
<td class='portlet-title portlet-title-spacing'  
rowspan=2>Budget To Budget Comparison</td>
```

From this HTML snippet you can determine that the class definitions you want to evaluate are `td.portlet-title` and `td.portlet-title-spacing`, or perhaps `portlet-title` and `portlet-title-spacing`.



5. Search backwards in the HTML source for the string “CSS” that is associated with PPM Dashboard style sheets until you find something similar to the following text:

```
<link rel=stylesheet href='/itg/dashboard/arch/css/df-portal.css' type='text/css' />
<link rel=stylesheet href='/itg/dashboard/arch/css/portlet.css' type='text/css' />
<link rel=stylesheet href='/itg/dashboard/arch/css/portlet-extensions.css' type='text/css' />
```

From this HTML snippet you can determine that the class definition is in likely to be in either the `df-portal.css`, `portlet.css`, or `portlet-extensions.css` file (or the corresponding `_rtl.css` file) contained within the Dashboard archive file. If the class definitions are not found in any of these CSS files, repeat this step until the information is located.

To make changes to the PPM Dashboard-related cascading style sheet requires a number of steps, including stopping and restarting the PPM Server. See [PPM Dashboard Style Sheets on page 21](#) for details.

## Example: Finding Information for a Non-Dashboard Page

For this example, assume that you are considering changing the Sign Out button borders:

To identify the cascading style sheet and class definition:

1. Log on to PPM Center.
2. From any page in the standard interface, view the HTML source for the page.
  - From Microsoft Internet Explorer, select **View > Source**.
  - From Mozilla Firefox, select **View > Page Source**.
3. Search the HTML source for the string “SIGN OUT” (the text that appears on the button itself) until you find something similar to the following text:

```
<td><span class='signOutBtn1'><a href="javascript:onLogout()">SIGN OUT</a></span></td>
```

From this HTML snippet you can determine that the class definition you will want to evaluate is `span.signOutBtn1`, or perhaps `signOutBtn1`.

4. Search backwards in the HTML source for the string “CSS” until you find something similar to the following text:

```
<link rel=stylesheet href='/itg/web/knta/global/css/  
GlobalStyleSheet.css' type='text/css'>
```

From this HTML snippet you can determine that the class definition is likely to be found in the `GlobalStyleSheet.css` which is found in the `/itg/web/knta/global/css` folder on your PPM Server. If the class definition is not found in this CSS files, repeat this step until the information is located.

You would make any changes to the appearance of the Sign Out button in the `span.signOutBtn1` (or `signOutBtn1`) class definition in the `GlobalStyleSheet.css` file.



Whenever you make changes to a button, you should also evaluate the colors used for any anchor pseudo-class definitions.

## Where to Find the Files

To customize the standard interface, you need to edit the cascading style sheet and image files stored in various directories on the PPM Server.

Based on the areas identified in *Figure 1-1 on page 13* through *Figure 1-3 on page 15*, the customizable files are generally found in the following locations.

The `<PPM_Home>` placeholder refers to the directory where PPM Center is installed.

- GIF files (in English)

```
<PPM_Home>/pdf/images/  
<PPM_Home>/server/kintana/deploy/itg.war/html/  
<PPM_Home>/server/kintana/deploy/itg.war/images/common/  
<PPM_Home>/server/kintana/deploy/itg.war/images/pm/  
<PPM_Home>/server/kintana/deploy/itg.war/web/knta/global/  
images/  
<PPM_Home>/server/kintana/deploy/itg.war/web/knta/global/  
images/en/
```

Plus, in the Dashboard archive file:

```
arch/images/
```

## ■ CSS files

```
<PPM_Home>/pdf/  
<PPM_Home>/server/kintana/deploy/itg.war/css/common/  
<PPM_Home>/server/kintana/deploy/itg.war/css/pm/  
<PPM_Home>/server/kintana/deploy/itg.war/htmlTemplates/  
<PPM_Home>/server/kintana/deploy/itg.war/web/knta/global/  
css/  
<PPM_Home>/server/kintana/deploy/itg.war/web/knta/rpt/css/
```

Plus, in the Dashboard archive file:

```
/arch/css
```

## Modifying JSP Files

Modifying the common header and footer JSP pages is another way to change the look and feel of the standard interface. The following is a list of the most common JSP pages:

- `Header.jsp`. Determines the look of the menu bar and header for most pages.
- `Footer.jsp`. Determines the look of the footer for most pages.
- `SimpleHeader.jsp`. A simple version of the normal header JSP page used for pages that do not need a menu bar.
- `SimpleFooter.jsp`. A simple version of the normal footer JSP page used for pages that do not need a footer.

JSP page files are found in the directory:

```
<PPM_Home>/server/kintana/deploy/itg.war/web/knta/global/
```

## JSP Page Definitions

It is possible to modify the look and feel by changing your JSP pages. JSP pages are dynamic HTML documents which are interpreted by the PPM Center JSP engine prior to being presented to a Web browser.

Before you change your JSP files, note the following points:

- JSP files contain tag-like entries like:

```
<knta:Il8NGetBundle bundleName="KEXP_Resources" />
```

These tags are not standard HTML tags. The tags act as placeholders where the JSP engine should insert information known at the time of the user's request on the server side.

- JSP files often contain Java™ code that sends and retrieves data from the PPM Server, or pulls information stored in the user's session.
- JSP files may also contain client-side JavaScript. JSP files often use dynamically provided information in client-side JavaScript (<SCRIPT language='Javascript'> tags).

## Guidelines for Modifying JSP Pages

HP recommends the following practices when editing the global JSP files:

- JSP files should be edited in a plain-text editor, or a Web-authoring tool that supports JSP and JavaScript tags.
- Never edit the live JSP files directly on the production system. Changes to these files are immediately reflected in the system. Any error in modifying this file can prevent access to the system for all users.
- Be methodical when making changes to the JSP files. Save changes frequently. Check them by re-loading the relevant screen in the browser. It may be necessary to reconfigure the browser to prevent page caching.
- Java code changes should be avoided unless there is an explicit open API to use. All other Java code changes are not supported.
- HP recommends that the standard development processes for documentation and source control be applied to the processes for changing any JSP page and related files.

## Header.jsp File

The common header file, `Header.jsp`, affects the standard interface layout. `Header.jsp` divides the page into three main sections:

- Navigation path (the “bread crumbs” that appears in the gray ribbon of the banner)
- Menu bar
- Page content (for non-Dashboard pages)

Every time `Header.jsp` gets called, the navigation path, menu bar, and page content are generated. By default, any pages that include the `Header.jsp` will get the navigation path and the menu bar. However, it is possible to control whether the menu bar or navigation path should be displayed.

- **Menu bar.** The variable, `displayMenuFlag`, sets whether the menu bar should be displayed.
  - Set `displayMenuFlag` to `True` to display the menu bar.
  - Set `displayMenuFlag` to `False` so that the menu bar is not displayed.
- **Navigation path.** If a page is to be loaded in a windoid (that is, using `request.getParameter("IS_WINDOID") == 'Y'`) then both the menu and navigation path will not appear.



Every page that contains the `Header.jsp` file must also include the `Footer.jsp` file.

## Making Changes to Specific Pages

JSP files can reference the CSS files:

- Directly, such as the PortletPersonalization style sheet shown in the following example:

```
<link rel=stylesheet href='<%=localeCtrl.getCSSFileName("../
global/css/PortletPersonalization.css", request)%>'
type='text/css'>
```

- By reference, such as the global style sheet file shown in the following example:

```
<link rel=stylesheet
href='<%=localeCtrl.getCSSFileName(AddressLink.GLOBAL_STYLE_
SHEET, request) %>' type='text/css'>
```

GlobalStyleSheet.css is the global style sheet used for throughout much of the standard interface. The GlobalStyleSheet.css file is found in the following directory:

```
<ITG_Home>/server/kintana/deploy/itg.war/web/knta/global/css
```

- By inference, through the use of “include” files as shown in *Example: JSP, CSS, and the Standard Interface*. In this case, you would need to examine the “included” file, searching for the CSS file there.

### Example: JSP, CSS, and the Standard Interface

To demonstrate how JSP and CSS files interact with each other (and appear in the standard interface), consider the Create New Request page. The Create New Request page is a JSP page in the standard interface. The appearance of the **Request Type** field is governed by a CSS file.

- In the JSP RequestCreateList.jsp file:

```
<td class='field-prompt' nowrap><span>Request Type:</span></
td>
```

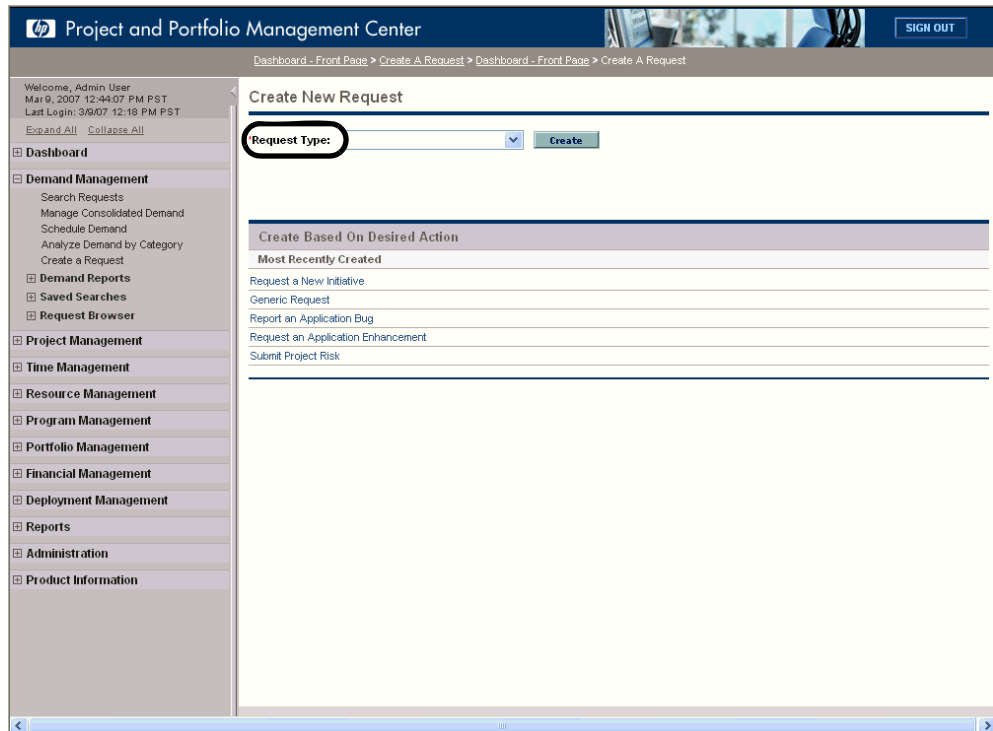
- In the CSS GlobalStyleSheet.css file:

```
.field-prompt
{
    font-family: Arial, Verdana, sans-serif;
    font-size: 11px;
    font-weight: bold;
    color: #000000;
    padding-right: 10px;
    padding-top: 5px;
    padding-bottom: 5px;
}
```

- In the standard interface:

*Figure 5-4* shows the **Request Type** field in the Create New Request page.

*Figure 5-4. Field prompt example*







# A Color Names

This appendix provides the table of color names that are supported by most browsers.

It is important to note that only 16 color names are supported in the W3C HTML 4.0 standard (aqua, black, blue, fuchsia, gray, green, lime, maroon, navy, olive, purple, red, silver, teal, white, and yellow). If you have concerns about browser compatibility, or are planning to export the portlet, you should use the hexadecimal values rather than the color names.

To view the colors themselves, point your browser to [www.w3.org/TR/css3-color/#html4](http://www.w3.org/TR/css3-color/#html4) and locate the section documenting “SVG color keywords.”

*Table A-1. Color names (page 1 of 6)*

Color Name	Hex Value
AliceBlue	#F0F8FF
AntiqueWhite	#FAEBD7
Aqua	#00FFFF
Aquamarine	#7FFFD4
Azure	#F0FFFF
Beige	#F5F5DC
Bisque	#FFE4C4
Black	#000000
BlanchedAlmond	#FFEBCD
Blue	#0000FF
BlueViolet	#8A2BE2
Brown	#A52A2A
BurlyWood	#DEB887
CadetBlue	#5F9EA0
Chartreuse	#7FFF00
Chocolate	#D2691E
Coral	#FF7F50
CornflowerBlue	#6495ED
Cornsilk	#FFF8DC
Crimson	#DC143C

*Table A-1. Color names (page 2 of 6)*

Color Name	Hex Value
Cyan	#00FFFF
DarkBlue	#00008B
DarkCyan	#008B8B
DarkGoldenrod	#B8860B
DarkGray	#A9A9A9
DarkGreen	#006400
DarkKhaki	#BDB76B
DarkMagenta	#8B008B
DarkOliveGreen	#556B2F
DarkOrange	#FF8C00
DarkOrchid	#9932CC
DarkRed	#8B0000
DarkSalmon	#E9967A
DarkSeaGreen	#8FBC8F
DarkSlateBlue	#483D8B
DarkSlateGray	#2F4F4F
DarkTurquoise	#00CED1
DarkViolet	#9400D3
DeepPink	#FF1493
DeepSkyBlue	#00BFFF
DimGray	#696969
DodgerBlue	#1E90FF
Feldspar	#D19275
FireBrick	#B22222
FloralWhite	#FFFAF0
ForestGreen	#228B22
Fuchsia	#FF00FF
Gainsboro	#DCDCDC

Table A-1. Color names (page 3 of 6)

Color Name	Hex Value
GhostWhite	#F8F8FF
Gold	#FFD700
GoldenRod	#DAA520
Gray	#808080
Green	#008000
GreenYellow	#ADFF2F
HoneyDew	#F0FFF0
HotPink	#FF69B4
IndianRed	#CD5C5C
Indigo	#4B0082
Ivory	#FFFFFF0
Khaki	#F0E68C
Lavender	#E6E6FA
LavenderBlush	#FFF0F5
LawnGreen	#7CFC00
LemonChiffon	#FFFACD
LightBlue	#ADD8E6
LightCoral	#F08080
LightCyan	#E0FFFF
LightGoldenrodYellow	#FAFAD2
LightGrey	#D3D3D3
LightGreen	#90EE90
LightPink	#FFB6C1
LightSalmon	#FFA07A
LightSeaGreen	#20B2AA
LightSkyBlue	#87CEFA
LightSlateBlue	#8470FF
LightSlateGray	#778899

Table A-1. Color names (page 4 of 6)

Color Name	Hex Value
LightSteelBlue	#B0C4DE
LightYellow	#FFFFE0
Lime	#00FF00
LimeGreen	#32CD32
Linen	#FAF0E6
Magenta	#FF00FF
Maroon	#800000
MediumAquamarine	#66CDAA
MediumBlue	#0000CD
MediumOrchid	#BA55D3
MediumPurple	#9370D8
MediumSeaGreen	#3CB371
MediumSlateBlue	#7B68EE
MediumSpringGreen	#00FA9A
MediumTurquoise	#48D1CC
MediumVioletRed	#C71585
MidnightBlue	#191970
MintCream	#F5FFFA
MistyRose	#FFE4E1
Moccasin	#FFE4B5
NavajoWhite	#FFDEAD
Navy	#000080
OldLace	#FDF5E6
Olive	#808000
OliveDrab	#6B8E23
Orange	#FFA500
OrangeRed	#FF4500
Orchid	#DA70D6

Table A-1. Color names (page 5 of 6)

Color Name	Hex Value
PaleGoldenrod	#EEE8AA
PaleGreen	#98FB98
PaleTurquoise	#AFEEEE
PaleVioletRed	#D87093
PapayaWhip	#FFEFD5
PeachPuff	#FFDAB9
Peru	#CD853F
Pink	#FFC0CB
Plum	#DDA0DD
PowderBlue	#B0E0E6
Purple	#800080
Red	#FF0000
RosyBrown	#BC8F8F
RoyalBlue	#4169E1
SaddleBrown	#8B4513
Salmon	#FA8072
SandyBrown	#F4A460
SeaGreen	#2E8B57
SeaShell	#FFF5EE
Sienna	#A0522D
Silver	#C0C0C0
SkyBlue	#87CEEB
SlateBlue	#6A5ACD
SlateGray	#708090
Snow	#FFFAFA
SpringGreen	#00FF7F
SteelBlue	#4682B4
Tan	#D2B48C

*Table A-1. Color names (page 6 of 6)*

Color Name	Hex Value
Teal	#008080
Thistle	#D8BFD8
Tomato	#FF6347
Turquoise	#40E0D0
Violet	#EE82EE
VioletRed	#D02090
Wheat	#F5DEB3
White	#FFFFFF
WhiteSmoke	#F5F5F5
Yellow	#FFFF00
YellowGreen	#9ACD32

---

## B Sample Files

---

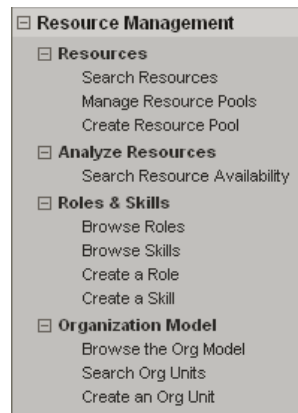
### In This Appendix:

- *resource\_management.xml Menu File*
  - *ColorPalette.css Portlet Color Specification File*
  - *Library.dtd File*
  - *Custom.dtd File*
  - *Cameo.dtd File*
-

## resource\_management.xml Menu File

The following is an example of the XML file controlling the **Resource** menu group in PPM Center. This XML file corresponds to the following menu excerpt:

Figure B-1. Resource Management menu group



```
<?xml version="1.0" encoding="UTF-8"?>
<menus seq="40">
  <title_RESOURCE>RESOURCE_MANAGEMENT_MENU_TEXT.TXT</title_RESOURCE>
  <access_type>
    <license_type>MERCURY_DEMAND_MANAGEMENT.TXT</license_type>
    <license_type>MERCURY_PROJECT_MANAGEMENT.TXT</license_type>
    <license_type>MERCURY_PROGRAM_MANAGEMENT.TXT</license_type>
    <license_type>MERCURY_PORTFOLIO_MANAGEMENT.TXT</license_type>
    <license_type>MERCURY_CONFIGURATION.TXT</license_type>
  </access_type>
  <menu>
    <menu_title_RESOURCE>RESOURCES_AND_RESOURCE_POOLS_MENU_TEXT.TXT</menu_title_RESOURCE>
    <menu_item>
      <display_text_RESOURCE>SEARCH_RESOURCES_MENU_TEXT.TXT</display_text_RESOURCE>
      <url>/itg/resource/SearchResources.do</url>
      <html_id>SearchResourcesMenuItem</html_id>
      <access_type>
        <access_grant_group>
          <access_grant>EDIT_ALL_RESOURCES_GRANT.TXT</access_grant>
          <access_grant>EDIT_ONLY_RESOURCES_THAT_I_MANAGE_GRANT.TXT</access_grant>
          <access_grant>VIEW_ALL_RESOURCES_GRANT.TXT</access_grant>
        </access_grant_group>
      </access_type>
    </menu_item>
    <menu_item>
      <display_text_RESOURCE>SEARCH_RESOURCE_POOLS_MENU_TEXT.TXT</display_text_RESOURCE>
      <url>/itg/resourcepool/SearchResourcePool.do</url>
      <html_id>SearchResourcePoolMenuItem</html_id>
      <access_type>
        <access_grant_group>
          <access_grant>VIEW_RESOURCE_POOLS_GRANT.TXT</access_grant>
          <access_grant>VIEW_ALL_RESOURCE_POOLS_GRANT.TXT</access_grant>
        </access_grant_group>
        <access_grant_group>
          <access_grant condition="not">EDIT_RESOURCE_POOLS_GRANT.TXT</access_grant>
        </access_grant_group>
        <access_grant_group>
          <access_grant condition="not">EDIT_ALL_RESOURCE_POOLS_GRANT.TXT</access_grant>
        </access_grant_group>
      </access_type>
    </menu_item>
    <menu_item>
      <display_text_RESOURCE>MANAGE_RESOURCE_POOLS_MENU_TEXT.TXT</display_text_RESOURCE>
```



```

<url>/itg/resourcepool/SearchResourcePool.do</url>
<html_id>ManageResourcePoolMenuItem</html_id>
<access_type>
  <access_grant_group>
    <access_grant>EDIT_RESOURCE_POOLS_GRANT.TXT</access_grant>
    <access_grant>EDIT_ALL_RESOURCE_POOLS_GRANT.TXT</access_grant>
  </access_grant_group>
</access_type>
</menu_item>
<menu_item>
  <display_text_RESOURCE>CREATE_A_RESOURCE_POOL_MENU_TEXT.TXT</display_text_RESOURCE>
  <url>/itg/resourcepool/CreateResourcePool.do</url>
  <html_id>CreateResourcePoolMenuItem</html_id>
  <access_type>
    <access_grant_group>
      <access_grant>CREATE_RESOURCE_POOLS_GRANT.TXT</access_grant>
    </access_grant_group>
  </access_type>
</menu_item>
</menu>
<menu>
  <menu_title_RESOURCE>ANALYZE_RESOURCES_MENU_TEXT.TXT</menu_title_RESOURCE>
  <menu_item>
    <display_text_RESOURCE>SEARCH_RESOURCE_AVAILABILITY_MENU_TEXT.TXT</display_text_RESOURCE>
    <url>/itg/resource/ResourceFinder.do</url>
    <html_id>ResourceFinderMenuItem</html_id>
    <access_type>
      <license_type>MERCURY_PROJECT_MANAGEMENT.TXT</license_type>
      <license_type>MERCURY_DEMAND_MANAGEMENT.TXT</license_type>
      <license_type>MERCURY_CONFIGURATION.TXT</license_type>
      <access_grant_group>
        <access_grant>EDIT_ALL_RESOURCES_GRANT.TXT</access_grant>
        <access_grant>VIEW_ALL_RESOURCES_GRANT.TXT</access_grant>
      </access_grant_group>
    </access_type>
  </menu_item>
</menu>
<menu>
  <menu_title_RESOURCE>ROLES_AND_SKILLS_MENU_TEXT.TXT</menu_title_RESOURCE>
  <menu_item>
    <display_text_RESOURCE>BROWSE_ROLES_MENU_TEXT.TXT</display_text_RESOURCE>
    <url>/itg/role/BrowseRoles.do</url>
    <html_id>BrowseRolesMenuItem</html_id>
    <access_type>
      <access_grant_group>
        <access_grant>VIEW_ALL_ROLES_GRANT.TXT</access_grant>
        <access_grant>EDIT_ALL_ROLES_GRANT.TXT</access_grant>
      </access_grant_group>
    </access_type>
  </menu_item>
  <menu_item>
    <display_text_RESOURCE>BROWSE_SKILLS_MENU_TEXT.TXT</display_text_RESOURCE>
    <url>/itg/skill/BrowseSkills.do</url>
    <html_id>BrowseSkillsMenuItem</html_id>
    <access_type>
      <access_grant_group>
        <access_grant>VIEW_ALL_SKILLS_GRANT.TXT</access_grant>
        <access_grant>EDIT_ALL_SKILLS_GRANT.TXT</access_grant>
      </access_grant_group>
    </access_type>
  </menu_item>
  <menu_item>
    <display_text_RESOURCE>CREATE_A_ROLE_MENU_TEXT.TXT</display_text_RESOURCE>
    <url>/itg/role/CreateRole.do</url>
    <html_id>CreateRoleMenuItem</html_id>
    <access_type>
      <access_grant_group>
        <access_grant>EDIT_ALL_ROLES_GRANT.TXT</access_grant>
      </access_grant_group>
    </access_type>
  </menu_item>
  <menu_item>
    <display_text_RESOURCE>CREATE_A_SKILL_MENU_TEXT.TXT</display_text_RESOURCE>
    <url>/itg/skill/CreateSkill.do</url>
    <html_id>CreateSkillMenuItem</html_id>

```

```

        <access_type>
            <access_grant_group>
                <access_grant>EDIT_ALL_SKILLS_GRANT.TXT</access_grant>
            </access_grant_group>
        </access_type>
    </menu_item>
</menu>
<menu>
    <menu_title_RESOURCE>ORGANIZATION_MODEL_MENU_TEXT.TXT</menu_title_RESOURCE>
    <menu_item>
        <display_text_RESOURCE>BROWSE_THE_ORG_MODEL_MENU_TEXT.TXT</display_text_RESOURCE>
        <url>/itg/web/knta/rsc/OrgModelTreeView.jsp</url>
        <html_id>OrgModelTreeViewMenuItem</html_id>
        <access_type>
            <access_grant_group>
                <access_grant>VIEW_ORGANIZATION_GRANT.TXT</access_grant>
                <access_grant>EDIT_ENTIRE_ORGANIZATION_GRANT.TXT</access_grant>
                <access_grant>EDIT_ONLY_ORGANIZATION_UNITS_THAT_I_MANAGE_GRANT.TXT</access_grant>
            </access_grant_group>
        </access_type>
    </menu_item>
    <menu_item>
        <display_text_RESOURCE>SEARCH_ORG_UNITS_MENU_TEXT.TXT</display_text_RESOURCE>
        <url>/itg/web/knta/rsc/OrgUnitSearch.jsp</url>
        <html_id>OrgUnitSearchMenuItem</html_id>
        <access_type>
            <access_grant_group>
                <access_grant>EDIT_ENTIRE_ORGANIZATION_GRANT.TXT</access_grant>
                <access_grant>EDIT_ONLY_ORGANIZATION_UNITS_THAT_I_MANAGE_GRANT.TXT</access_grant>
            </access_grant_group>
        </access_type>
    </menu_item>
    <menu_item>
        <display_text_RESOURCE>CREATE_AN_ORG_UNIT_MENU_TEXT.TXT</display_text_RESOURCE>
        <url>/itg/web/knta/rsc/OrgUnitCreate.jsp</url>
        <html_id>OrgUnitCreateMenuItem</html_id>
        <access_type>
            <access_grant_group>
                <access_grant>EDIT_ENTIRE_ORGANIZATION_GRANT.TXT</access_grant>
                <access_grant>EDIT_ONLY_ORGANIZATION_UNITS_THAT_I_MANAGE_GRANT.TXT</access_grant>
            </access_grant_group>
        </access_type>
    </menu_item>
</menu>
</menus>

```

## ColorPalette.css Portlet Color Specification File

The following is an example of the CSS file that controls the colors used in the portlets within PPM Center. This file can be customized to specify the color associated with individual portlet field labels.

```
colorPalette {
  color: '#111111';
  color: '#3FD5D6';
  color: '#3FD5D6';
  color: '#00A67A';
  color: '#00A67A';
  color: '#FADF16';
  color: '#FADF16';
  color: '#E83838';
  color: '#BD37BD';
  color: '#A8E327';
  color: '#4141DE';
  color: '#8C97A6';
  color: '#DE418E';
  color: '#58B800';
  color: '#FF8514';
  color: '#8E41DE';
  color: '#FFB726';
  color: '#668225';
  color: '#FB9494';
  color: '#2E87BF';
  color: '#D1723F';
  color: '#91F2F2';
  color: '#007959';
  color: '#DEA842';
  color: '#821717';
  color: '#E8A7E8';
  color: '#00D69E';
  color: '#3173DE';
  color: '#626A74';
  color: '#8AC255';
  color: '#FFD4AB';
  color: '#6D32AC';
  color: '#C9FF54';
  color: '#7D7DF0';
  color: '#53AAC4';
  color: '#BA2222';
  color: '#C0E899';
  color: '#7C9E2C';
  color: '#CC64CC';
  color: '#3333B2';
  color: '#B9C0CA';
  color: '#59DE6F';
  color: '#DC88DC';
  color: '#B05125';
  color: '#AAC23B';
  color: '#FDFF8F';
  color: '#EE6C45';
  color: '#00AFB5';
  color: '#BB8DEB';
  color: '#1F9934';
  color: '#F2748B';
  color: '#80A2ED';
  color: '#8CCFE8';
}
```

## Library.dtd File

The following is the DTD file used in conjunction with the “home” page of the PPM Documentation Library.

```
<!ELEMENT library      (masterindex, leftsection, rightsection,
rolelist) >
<!ELEMENT leftsection  (group+)>
<!ELEMENT rightsection (group+)>
<!ELEMENT group        (head, (subhead?, document+)+)>
<!ELEMENT head         (htitle, hdesc?)>
<!ELEMENT subhead     (stitle, sdesc?)>
<!ELEMENT document    (dtitle, dfn, dtype?, dhtm?, daud?,
(dpud|dupd)?)>
<!ELEMENT htitle      (#PCDATA)>
<!ELEMENT hdesc       (#PCDATA)>
<!ELEMENT stitle      (#PCDATA)>
<!ELEMENT sdesc       (#PCDATA)>
<!ELEMENT dtitle      (#PCDATA)>
<!ELEMENT dfn         (#PCDATA)>
<!ELEMENT dtype       (#PCDATA)>
<!ELEMENT dhtm        (#PCDATA)>
<!ELEMENT daud        (rid)>
<!ELEMENT dpud        (month,day,year)>
<!ELEMENT dupd        (month,day,year)>
<!ELEMENT month       (#PCDATA)>
<!ELEMENT day         (#PCDATA)>
<!ELEMENT year        (#PCDATA)>
<!ELEMENT flag        (#PCDATA)>
<!ELEMENT rolelist    (role+)>
<!ELEMENT role        ((rid, rcat, rtitle, rdesc)+)>
<!ELEMENT rid         (#PCDATA)>
<!ELEMENT rcat        (#PCDATA)>
<!ELEMENT rtitle      (#PCDATA)>
<!ELEMENT rdesc       (#PCDATA)>
<!ELEMENT masterindex (dfn)>
```

## Custom.dtd File

The following is the DTD file used in conjunction with the site-customized page of the PPM Documentation Library.

```
<!ELEMENT custom      (leftsection, rightsection, title) >
<!ELEMENT leftsection (group+)>
<!ELEMENT rightsection (group+)>
<!ELEMENT group      (head, (subhead?, document+)+)*>
<!ELEMENT head       (htitle)>
<!ELEMENT subhead    (stitle)>
<!ELEMENT document   (dtitle, dfn, dtype)>
<!ELEMENT title      (#PCDATA)>
<!ELEMENT htitle     (#PCDATA)>
<!ELEMENT hdesc      (#PCDATA)>
<!ELEMENT stitle     (#PCDATA)>
<!ELEMENT sdesc      (#PCDATA)>
<!ELEMENT dtitle     (#PCDATA)>
<!ELEMENT dfn        (#PCDATA)>
<!ELEMENT dtype      (#PCDATA)>
<!ELEMENT dhtm       (#PCDATA)>
```

## Cameo.dtd File

The following is the DTD file used in conjunction with the supplemental product documentation page of the PPM Documentation Library.

```
<!ELEMENT cameo      (section) >
<!ELEMENT section    (document*)>
<!ELEMENT document   (dtitle, dfn, dtype?)>
<!ELEMENT dtitle     (#PCDATA)>
<!ELEMENT dfn        (#PCDATA)>
<!ELEMENT dtype      (#PCDATA)>
```



# Index

## A

- adding
  - HP supplemental guides to library 47
  - site-specific guides to library 49

## B

- branding
  - overview 17
  - your instance 19

## C

- cascading style sheets 20, 24, 56, 57, 59
- changing
  - See also* cascading style sheets.
  - colors 20, 24
  - corporate logos 22
  - fonts 20, 24
  - instance identification 34
  - logon page 32
  - menu text 34
  - portlet field colors 38
  - sign out button 30
- colors
  - changing 20, 24
  - choices and names 65
  - portlet fields 38
- corporate logos
  - changing 22
  - files 58
- CSS
  - See* cascading style sheets.
- customizations, standard interface 31, 34
  - colors 24
  - fonts 24
  - logon page 32
  - menu text 34
  - overview 12

- portlet field colors 38
- risk factors 16
- risk mitigation 16
- typical 17, 19
- unusual 17

## D

- Dashboard
  - style sheets 21, 56
  - See also* non-Dashboard.
- deleting
  - unnecessary guides from library 42
- documentation
  - See also* documents.
  - library 42
- documents 42
  - adding HP supplemental guides 47
  - adding site-specific guides 49
  - DTD files 42, 76, 77
  - removing unnecessary guides 42
  - supported file types 53
  - XML files 42
- DTD files
  - See* documents.

## F

- finding
  - See also* identifying.
  - corporate logo files 58
  - CSS files 59
- fonts
  - changing 20, 24

## H

- hexadecimal color codes 65

## I

identifying

class definitions [56](#)

CSS files [56](#)

your instance [34](#)

## J

Java Server Pages [59](#)

JSP files [59](#)

## L

library, documentation [42](#)

*See also* documents.

logon page,changing [32](#)

## M

menu text

changing [34](#)

XML file [72](#)

modifying

JSP files [59](#)

## N

names, colors [65](#)

non-Dashboard style sheets [21](#), [57](#)

## P

portlets

field colors, changing [38](#)

field colors, ColorPalette.css file [75](#)

## R

removing

unnecessary guides from library [42](#)

## S

sign out button, changing [30](#)

standard interface [12](#)

*See also* customizations, standard interface.

## X

XML files

*See* documents.