

IP Access Rate Report Pack

Software Version: 3.20

HP Performance Insight 5.40

User Guide

February 2009



Legal Notices

Warranty

The only warranties for HP products and services are set forth in the express warranty statements accompanying such products and services. Nothing herein should be construed as constituting an additional warranty. HP shall not be liable for technical or editorial errors or omissions contained herein.

The information contained herein is subject to change without notice.

Restricted Rights Legend

Confidential computer software. Valid license from HP required for possession, use or copying. Consistent with FAR 12.211 and 12.212, Commercial Computer Software, Computer Software Documentation, and Technical Data for Commercial Items are licensed to the U.S. Government under vendor's standard commercial license.

Copyright Notices

© Copyright 2002 - 2009 Hewlett-Packard Development Company, L.P.

This product includes Xerces XML Java Parser software, which is Copyright (c) 1999 The Apache Software Foundation. All rights reserved.

This product includes JDOM XML Java Parser software, which is Copyright (C) 2000-2003 Jason Hunter & Brett McLaughlin. All rights reserved.

This product includes JClass software, which is (c) Copyright 1997, KL GROUP INC. ALL RIGHTS RESERVED.

This product includes J2TablePrinter software, which is © Copyright 2001, Wildcrest Associates (<http://www.wildcrest.com>)

This product includes Xalan XSLT Processor software, which is Copyright (c) 1999 The Apache Software Foundation. All rights reserved.

This product includes EXPAT XML C Processor software, which is Copyright (c) 1998, 1999, 2000 Thai Open Source Software Center Ltd and Clark Cooper Copyright (c) 2001, 2002 Expat maintainers.

This product includes Apache SOAP software, which is Copyright (c) 1999 The Apache Software Foundation. All rights reserved.

This product includes O'Reilley Servlet Package software, which is Copyright (C) 2001-2002 by Jason Hunter, jhunter_AT_servlets.com. All rights reserved.

This product includes HTTPClient Package software, which is Copyright (C) 1991, 1999 Free Software Foundation, Inc. 59 Temple Place, Suite 330, Boston, MA 02111-1307 USA.

This product includes Perl software, which is Copyright 1989-2002, Larry Wall. All rights reserved.

This product includes Skin Look And Feel software, which is Copyright (c) 2000-2002 L2FProd.com. All rights reserved.

This product includes nanoXML software, which is Copyright (C) 2000 Marc De Scheemaeker, All Rights Reserved.

This product includes Sixlegs PNG software, which is Copyright (C) 1998, 1999, 2001 Chris Nokleberg

This product includes cURL & libcURL software, which is Copyright (c) 1996 - 2006, Daniel Stenberg, <daniel@haxx.se>. All rights reserved.

This product includes Quartz - Enterprise Job Scheduler software, which is Copyright 2004-2005 OpenSymphony

This product includes Sixlegs PNG software, which is Copyright (C) 1998, 1999, 2001 Chris Nokleberg

This product includes cURL & libcurl software, which is Copyright (c) 1996 - 2006, Daniel Stenberg, <daniel@haxx.se>. All rights reserved.

This product includes Quartz - Enterprise Job Scheduler software, which is Copyright 2004-2005 OpenSymphony

This product includes Free DCE software, which is (c) Copyright 1994 OPEN SOFTWARE FOUNDATION, INC., (c) Copyright 1994 HEWLETT-PACKARD COMPANY, (c) Copyright 1994 DIGITAL EQUIPMENT CORPORATION, Copyright (C) 1989, 1991 Free Software Foundation, Inc. 59 Temple Place, Suite 330, Boston, MA 02111-1307 USA

This product includes DCE Threads software, which is Copyright (C) 1995, 1996 Michael T. Peterson

This product includes Jboss software, which is Copyright 2006 Red Hat, Inc. All rights reserved.

This product includes org.apache.commons software developed by the Apache Software Foundation (<http://www.apache.org/>).

Trademark Notices

Java™ is a U.S. trademark of Sun Microsystems, Inc. Java™ and all Java based trademarks and logos are trademarks or registered trademarks of Sun Microsystems, Inc. in the U.S. and other countries.

Oracle® is a registered U.S. trademark of Oracle Corporation, Redwood City, California.

UNIX® is a registered trademark of The Open Group.

Windows® and Windows NT® are U.S. registered trademarks of Microsoft® Corporation.

Documentation Updates

This guide's title page contains the following identifying information:

- Software Version number, which indicates the software version.
- Document Release Date, which changes each time the document is updated.
- Software Release Date, which indicates the release date of this version of the software.

To check for recent updates, or to verify that you are using the most recent edition of a document, go to:

<http://h20230.www2.hp.com/selfsolve/manuals>

This site requires that you register for an HP Passport and sign-in. To register for an HP Passport ID, go to:

<http://h20229.www2.hp.com/passport-registration.html>

Or click the **New users - please register** link on the HP Passport login page.

You will also receive updated or new editions if you subscribe to the appropriate product support service. Contact your HP sales representative for details.

Support

You can visit the HP Software Support Online web site at:

<http://www.hp.com/go/hpsoftwaresupport>

This web site provides contact information and details about the products, services, and support that HP Software offers.

HP Software Support Online provides customer self-solve capabilities. It provides a fast and efficient way to access interactive technical support tools needed to manage your business. As a valued support customer, you can benefit by using the HP Software Support web site to:

- Search for knowledge documents of interest
- Submit and track support cases and enhancement requests
- Download software patches
- Manage support contracts
- Look up HP support contacts
- Review information about available services
- Enter into discussions with other software customers
- Research and register for software training

Most of the support areas require that you register as an HP Passport user and sign in. Many also require a support contract.

To find more information about access levels, go to:

http://h20230.www2.hp.com/new_access_levels.jsp

To register for an HP Passport ID, go to:

<http://h20229.www2.hp.com/passport-registration.html>

Contents

1 Overview	9
PI and Access Rate Reporting	9
Integration with NNM	11
Package Version History	11
Ways to Customize Reports	12
Sources for Additional Information	13
2 Package Installation	15
Prerequisites for Installation	15
Upgrading to Version 3.20	16
Installing IP Access Rate 3.20	18
Accessing Deployed Reports	19
Package Removal	20
3 Setting Up a Distributed System	21
Configuring the Central Server	21
Configuring a Satellite Server	23
System Clocks	24
4 Sample Reports	25
A Editing Tables and Graphs	33
View Options for Tables	33
View Options for Graphs	34
Index	43

1 Overview

This chapter covers the following topics:

- [PI and Access Rate Reporting](#)
- [QoS and Committed Access Rate \(CAR\)](#)
- [Package Version History](#)
- [Ways to Customize Reports](#)
- [Sources for Additional Information](#)

PI and Access Rate Reporting

Performance Insight is a performance management application that collects data from many sources, performs in-depth trend analysis, maintains performance baselines, and provides users with convenient, web-based reporting. Following is a partial list of product features:

- Distributed architecture
- Easy to scale (supports data collection from thousands of agents)
- CODA/PA agent support
- Multi-company security model
- Data warehousing
- Near Real Time reporting
- Forecasting
- Extensive aggregation (by day, week, month; by location, by customer)
- Thresholding and alerting
- Easy identification of bottlenecks
- Easy assessment of capacity trends
- Accurate and timely documentation for management
- Integration with NNM
- Integration with HP Operations/OM

The IP Access Rate Report Pack installs on PI. This report pack supplements the Interface Reporting Report Pack, and the Interface Reporting Report Pack is a prerequisite. The reports in IP Access Rate identify interfaces with high ratios of filtered traffic. If you know which interfaces have high ratios of filtered traffic, you know which service levels need to be modified to avoid congestion on the backbone.

QoS and Committed Access Rate (CAR)

QoS refers to a network's ability to provide better service to select traffic on IP-routed networks. QoS has the following goals:

- Dedicate bandwidth to particular traffic types
- Control jitter and latency (necessary for real-time, interactive traffic)
- Improve loss characteristics

Committed Access Rate, or CAR, is a feature of Cisco IOS that lets you assign a rate limit policy to a router interface. The policy controls how much traffic gets transmitted and how much traffic gets dropped. The policy functions as a uni-directional rule, or rate-limiting object (RLO). A byte or package that exceeds the RLO will be dropped (filtered out) at the interface. If the ratio of dropped traffic is high and stays high, the customer's level of service may be incorrect. Each RLO specifies one of the following actions:

- Transmit the packet
- Drop the packet
- Set IP precedence bits and transmit
- Set QoS group and transmit
- Continue [evaluate the packet using the next rate policy]
- Rewrite the IP precedence bits in the packet header and continue

IP Access Rate Reports

IP Access Rate contains four reports:

Near Real Time Activity. Highlights interfaces with high filtering ratios, based on sample data collected over the previous six hours. Identifies switched bytes, filtered bytes, and burst rate. Any interface that appears in this report had to have at least some policing activity over the previous six hours.

Recent Activity. Filtering activity within the most recent summarized hour for managed devices, split by customer. Shows switched/filtered activity per device on an hourly basis over the previous few days.

Historical Activity Report. A list of managed devices, split by customer, highlighting devices that are doing the most filtering. Ranks devices by percentage of filtered traffic. Use this report to find out where device utilization is above the allowed service level.

Inventory. A list of every interface in the network, with RLO configuration details. Use this list to examine customer configurations or to compare interfaces on different devices.

Chapter 4, Sample Reports, contains report illustration and additional descriptions.

Data Collection

IP Access Rate uses one datapipe, the Cisco IP Access Rate Datapipe to poll the CAR MIB for the following metrics:

- Switched bytes
- Filtered bytes
- Burst rate

- Discards
- Errors

Adding and Modifying Properties

There is no separate property import for the reports in IP Access Rate. The property information that pertains to an interface, such as interface speed, customer, location, and device name, is inherited from two external sources:

- The property import utility bundled with the Interface Reporting Report Pack
- Common Property Tables

For more information about how to modify property data inherited from these two sources, refer to the following manuals:

- *Interface Reporting Report Pack User Guide*
- *Common Property Tables User Guide*

Integration with NNM

If you use NNM as well as PI, you have the option of improving your ability to isolate faults and diagnose problems by integrating PI with NNM. To integrate PI and NNM, run the integration script on NNM and open the Integration Wizard on PI.

If NNM and PI are integrated, we recommend installing the optional thresholds sub-package that comes with IP Access Rate. Installing the optional thresholds sub-package delivers a customized thresholds policy to the Thresholds Module, which uses the policy to monitor the database for threshold conditions and respond to breaches by taking an action in accordance with category, severity, and destination parameters. The default response is to send a breach trap to NNM. The breach trap received by NNM becomes an alarm in the NNM alarm browser. The NNM operator can respond to the alarm by launching a Near Real Time report.

Configuring the Thresholds Module is not necessary. You do not need to define an action or specify a destination for breach traps. However, you are free to modify category, severity, and destination parameters at any time. For details about these options, refer to the *Thresholds Module User Guide*.

Package Version History

The following table outlines recent enhancements to the IP Access Rate Report Pack.

Version	Release Date	Enhancements
1.00	May 2003	4 reports, no forms; Sybase support
2.00	October 2003	PI Object Manager support; thresholds sub-package
3.00	April 2004	PI 5.0 support; Oracle support
3.00	August 2004	Upgrade package (“to_3.0”)

Version	Release Date	Enhancements
3.10	April 2007	<i>new features:</i> <ul style="list-style-type: none"> • Location Independent Reporting (LIR) • Supports Management Console > Copy Policy Manager • Top level table of NRT reports no longer shows rate data • SQL modified to support IR node/interface delete <i>new release of the datapipe:</i> <ul style="list-style-type: none"> • Cisco IPAccessRate Datapipe 3.10 <i>new upgrade package:</i> <ul style="list-style-type: none"> • UPGRADE_IPAccessRate_Reporting_to_31
3.10	October 2007	<i>new release of the datapipe:</i> <ul style="list-style-type: none"> • Cisco IPAccessRate Datapipe 3.20 <i>defect fix:</i> <ul style="list-style-type: none"> • QXCR1000348781: IP Access Rate list not showing correctly
3.20	February 2009	<i>new upgrade package:</i> <ul style="list-style-type: none"> • IPAccessRate_Reporting_Upgrade_to_32 <i>new upgrade datapipe:</i> <ul style="list-style-type: none"> • Cisco_IPAccessRate_Datapipe_Upgrade_31_to_33 <i>defect fix:</i> <ul style="list-style-type: none"> • QXCR1000806048 - UPGRADE_IPAccessRate_Reporting_to_32 fails with errors

Ways to Customize Reports

You can change the contents of a report by applying group filters (not related to traffic filtering mentioned above), by updating property information, by applying constraints, and by editing tables and graphs. For details about view options for tables and graphs, see [Appendix A, Editing Tables and Graphs](#).

Group Filters

If you want to share reports with your customers, you must configure PI to produce customer-specific reports. Here is an overview of the steps involved:

- Use Common Property Tables to import customer names and device locations
- Create a group account for all the users affiliated with each customer
- Create a group filter for each group account

For more information about group filters, refer to the *PI Administration Guide*.

Applying Constraints

When you edit a parameter, you apply a constraint to the report. If you edit the Customer Name parameter, data for all customers except the customer you typed in the Customer Name field will drop from the report. If you edit the Source Location, data for all locations except the location you typed in the Source Location field will drop from the report.

IP Access Rate supports the following parameters:

- Customer Name
- Customer ID
- Device Name
- Interface Name
- Admin Status
- Location Name

You can apply multiple constraints at once. If you are viewing the report remotely (using the Web Access Server), apply a constraint by clicking the edit parameters icon at the bottom right-hand corner of the report. When the Edit Parameters window opens, enter the constraint in the field and click **Submit**.

If you are using Report Viewer, select **Edit > Parameter Values** from the menu bar. When the Modify Parameter Values window opens, click the **Current Value** field. Type a new value and click **OK**.

Sources for Additional Information

The demo package that comes with IP Access Rate contains a sample of each report in the package. If you have access to the demo package and you want to know what fully-populated reports look like, install the demo package. Demo reports are interactive. Selection tables are linked to graphs and you can experiment with constraints and view options.

For information about the latest changes to this package and any known problems, refer to:

- *IP Access Rate Report Pack Release Notes*
- *PI Report Packs, CD-ROM Release Notes, February 2009*

For details about related packages, refer to the following documents:

- *IP QoS Statistics Report Pack User Guide*
- *Interface Reporting Report Pack User Guide*
- *Common Property Tables User Guide*

Manuals for the core product, PI, and manuals for the reporting solutions and shared packages that run on PI, can be downloaded from this site:

<http://h20230.www2.hp.com/selfsolve/manuals>

The user guides for PI are listed under **Performance Insight**. The user guides for report packs and datapipes are listed under **Performance Insight Report Packs**. Each manual indicates a date. If the manual is revised and reposted, the date will change. Since we post revised manuals on a regular basis, you should check this site for updates.

2 Package Installation

This chapter covers the following topics:

- [Prerequisites for Installation](#)
- [Upgrading to Version 3.20](#)
- [Installing IP Access Rate 3.20](#)
- [Accessing Deployed Reports](#)
- [Package Removal](#)

Prerequisites for Installation

The report pack CD-ROM contains report packs, datapipes, and several shared packages. When you insert the CD in the drive and launch the package extraction program, the install script on the CD extracts every package from the CD and copies the results to the Packages directory on your system. After the extract finishes, the install script prompts you to launch PI and start Package Manager. Before using Package Manager, be familiar with the following guidelines. IP Access Rate has a combination of core-product requirements and package-level requirements. The core product requirements are as follows:

- PI 5.40
- All available Service Packs for the version of PI (5.40) you are running

You can find information about each service pack, including installation instructions, in the release notes for the service pack. The package-level prerequisites are as follows:

- Common Property Tables 3.90
- Interface Reporting Report Pack 5.50
- Interface Discovery Datapipe 2.50
- Interface Reporting ifEntry Datapipe 2.50

Common Property Tables

If you are running Common Property Tables 3.60 or earlier, upgrade to the latest version by installing the upgrade package. Installing this upgrade package is no different from installing other upgrade package; however, do not install the upgrade for Common Property Tables *and* other packages at the same time. Install the upgrade package for Common Property Tables *and only* the upgrade package for Common Property Tables.

Distributed Environments

If you are running IP Access Rate as a distributed system across multiple servers, the central server, every satellite server, and every remote poller must be running the same version of PI and all available service packs for the version you are running. Following is a summary of the install procedure for distributed environments:

- Disable trendcopy on the central server.
- Install IP Access Rate on the central server; deploy reports.
- Install the following packages on each satellite server:
 - IP Access Rate; if you want local reporting, deploy reports
 - IPAccessRate_Reporting_Thresholds (optional)
 - Cisco IP Access Rate Datapipe
- Re-enable trendcopy on the central server.
- When you finish installing packages, configure your central and satellite servers by following the steps in [Chapter 3, Setting Up a Distributed System](#).

Optional Thresholds Sub-Package

If PI and NNM are integrated, you have the option of launching IP Access Rate reports from NNM in response to alarms that show up in the NNM alarm browser. To enable this option, install this package:

```
IPAccessRate_Reporting_Thresholds
```

The thresholds sub-package cannot operate without the Threshold and Event Generation Module, commonly known as the Thresholds Module. If you select the thresholds sub-package for installation, Package Manager will select and install the Thresholds Module for you.

Upgrading to Version 3.20

When you are upgrading a report pack, your first task is to delete the old datapipe. Before you delete the old datapipe, you may need to save configuration data related to polling policies and polling groups. In addition, you may need to delete any custom table views that you created yourself.

Datapipes and Remote Pollers

When you uninstall an existing datapipe, the following information will be lost:

- The polling policy for a single remote poller
- Cloned polling policies for multiple remote pollers
- Customized polling groups

You can export existing polling policy configurations and customized polling groups by using the `collection_manager` and `group_manager` commands.

Exporting Polling Policy Configurations

If your environment contains polling policies for remote pollers, use the `collection_manager` command to export existing policy configurations to a file.

UNIX: As user `trendadm`, run the following command:

```
cd $DPIPE_HOME  
./bin/collection_manager -export -file /tmp/savePollingPolicy.lst
```

Windows: As Administrator, launch a command window. Navigate to the PI install directory and run the following command:

```
bin\collection_manager -export -file \temp\savePollingPolicy.lst
```

Exporting Polling Group Configurations

If your environment contains customized polling groups, use the `group_manager` command to export groups to individual `.xml` files.

UNIX: As user `trendadm`, run the following command:

```
cd $DPIPE_HOME  
./bin/group_manager -export_all -outfile /tmp/savePollingGroups
```

Windows: As Administrator, launch a command window, then navigate to the PI install directory and run the following command:

```
bin\group_manager -export_all -outfile \temp\savePollingGroups
```

Custom Table Views

If you created custom views for data tables or property tables, the views you created may interfere with the report pack upgrade process. Whether or not your custom views interfere with the upgrade process depends on how you created them. If you created them using SQL, the upgrade will succeed but your views will not be available after the upgrade is complete. If you created them using Datapipe Manager, the upgrade is likely to fail. To prevent the upgrade from failing, delete your custom views before upgrading the report pack, then recreate them after the upgrade is complete.

Upgrading to IP Access Rate 3.20

Follow these steps to upgrade IP Access Rate:

- 1 Start Package Manager; delete Cisco IP Access Rate Datapipe 3.30.
- 2 Click **Done** when the removal finishes.
- 3 Start Package Manager; install the following package by itself, with no other packages:
IPAccessRate_Reporting_Upgrade_to_32
- 4 Click **Done** when the install finishes.
- 5 Start Package Manager; install Cisco IP Access Rate Datapipe 3.30.
- 6 Click **Done** when the install finishes.

Installing IP Access Rate 3.20

Follow these steps to install the IP Access Rate Report Pack for the first time:

- Task 1: Stop OVPI Timer and extract packages from the report pack CD
- Task 2: If necessary, upgrade Common Property Tables
- Task 3: Install the following packages:
 - *IP Access Rate 3.20*
 - *Cisco IPAccessRate Datapipe 3.30*
 - *IPAccessRate_Reporting_Thresholds* (optional)

Task 1: Stop OVPI Timer and extract packages from the report pack CD

- 1 Log in to the system. On UNIX systems, log in as root.
- 2 Stop OVPI Timer and wait for processes to terminate.

Windows: Select **Control Panel > Administrative Tools > Services**

UNIX: As root, do one of the following:

HP-UX: `sh /sbin/init.d/ovpi_timer stop`

Sun: `sh /etc/init.d/ovpi_timer stop`

- 3 Insert the report pack CD. On Windows, a Main Menu displays automatically. On UNIX, the CD may or may not mount automatically; if it does not mount automatically, navigate to the top level directory on the CD, and run the `./setup` command.
- 4 Type **1** in the choice field and press **Enter**. The install script displays a percentage complete bar. When the copy is complete, the install script starts Package Manager. The Package Manager install wizard opens.

When the copy to the Packages directory is complete, you have the option of navigating to the Packages directory to see the results. The Packages directory contains separate folders for the report pack and the datapipe. The following folders appear under IP Access Rate:

- *IPAccessRate_Reporting.ap*
- *IPAccessRate_Reporting_Demo.ap*
- *IPAccessRate_Reporting_Thresholds.ap*
- *UPGRADE_IPAccessRate_Reporting_to_32.ap*

You can ignore the upgrade package. The following folder appears under Cisco IPAccessRate Datapipe:

- *Cisco_IPAccessRate_Datapipe.ap*

Task 2: If necessary, upgrade Common Property Tables

IP Access Rate requires Common Property Tables 3.90. If you are currently using an earlier release, start Package Manager and upgrade to version 3.90. When Package Manager indicates that the upgrade package is complete, click **Done** to return to the Management Console.

If you are not running any version of Common Property Tables, skip this task and let Package Manager install the latest version of Common Property Tables for you, automatically.

Task 3: Install IP Access Rate, the datapipe, and the optional thresholds package

- 1 Start Package Manager. The Package Manager install wizard opens.
- 2 Click **Next**. The Package Location window opens.
- 3 Click **Install**. Approve the default installation directory or use the browse feature to select a different directory if necessary.
- 4 Click **Next**. The Report Deployment window opens. Accept the default for Deploy Reports; accept the defaults for application server name and port; type your user name and password for the PI Application Server.
- 5 Click **Next**. The Package Selection window opens.
- 6 Click the check box next to the following packages:
 - IPAccessRate_Reporting*
 - IPAccessRate_Reporting_Thresholds* (optional)
 - IPAccessRate_Reporting_Demo*
 - Cisco_IPAccessRate_Datapipe*
- 7 Click **Next**. The Type Discovery window opens. Keep the default and click **Next**. The Selection Summary window opens.
- 8 Click **Install**. The Install Progress window opens. When installation finishes, an install complete message appears.
- 9 Click **Done** to return to the Management Console.
- 10 Restart OVPI Timer.

Windows: Select **Control Panel > Administrative Tools > Services**

UNIX: As root, do one of the following:

HP-UX: `sh /sbin/init.d/ovpi_timer start`

Sun: `sh /etc/init.d/ovpi_timer start`

Accessing Deployed Reports

When you installed IP Access Rate, you enabled the Deploy Reports option. As a result, the reports in this package (as well as any forms associated with the package) were deployed to the PI Application Server. Once reports reside on the PI Application Server, you have two ways to view them:

- PI client applications
- Web browser

If the client applications are installed on your system, you have access to Report Viewer, Report Builder, and the Management Console. If the client applications are not installed on your system, using a web browser is the only way you can view reports.

For more information about the clients, refer to the *PI Installation Guide*. For details about the Management Console, including how to use the Object/Property Management view to launch reports specific to a selected object, refer to the *PI Administration Guide*.

Package Removal

Follow these steps to uninstall IP Access Rate and the Cisco IP Access Rate Datapipe:

1 Log in to the system. On UNIX systems, log in as root.

2 Stop OVPI Timer and wait for processes to terminate.

Windows: Select **Control Panel > Administrative Tools > Services**

UNIX: As root, do one of the following:

HP-UX: `sh /sbin/init.d/ovpi_timer stop`

Sun: `sh /etc/init.d/ovpi_timer stop`

3 Start Package Manager. The Package Manager window opens.

4 Click **Next**. The Package Location window opens.

5 Click **Uninstall**. Keep the defaults.

6 Click **Next**. The Package Selection window opens.

7 Click the check box next to the following packages:

IPAccessRate_Reporting

IPAccessRate_Reporting_Thresholds (if installed)

IPAccessRate_Reporting_Demo (if installed)

Cisco_IPAccessRate_Datapipe

8 Click **Next**. The Selection Summary window opens.

9 Click **Uninstall**. The Progress window opens. When the removal finishes, a removal complete message appears.

10 Click **Done** to return to the Management Console.

11 Restart OVPI Timer.

Windows: Select **Control Panel > Administrative Tools > Services**

UNIX: As root, do one of the following:

HP-UX: `sh /sbin/init.d/ovpi_timer start`

Sun: `sh /etc/init.d/ovpi_timer start`

3 Setting Up a Distributed System

If you intend to run IP Access Rate as a distributed system, and you followed the instructions in the previous chapter, the central server is running IP Access Rate and each satellite server is running IP Access Rate, the thresholds sub-package, and the Cisco IPAccessRate Datapipe. Your next task is to configure the central server and each satellite server. This chapter covers the following topics:

- Configuring the central server
- Configuring each satellite server
- System clocks

Configuring the Central Server

To configure the central server, perform the following tasks:

- Task 1: Register the satellite server by setting the database role
- Task 2: If you are not copying rate data from satellites to the central server, enable LIR
- Task 3: If you enable LIR, add LIR mappings
- Task 4: Verify the automatically generated copy policies
- Task 5: Modify the `IPAR_Hourly_Process.pro` file

Task 1: Register the satellite server by setting the database role

- 1 Start the Management Console (log on with Administrator privileges).
- 2 Click the **Systems** icon in the navigation pane.
- 3 Navigate to the OVPI Databases folder and select the database system.
- 4 Click **Database Properties**.
- 5 From the Database Role list, select the Satellite Server role.
- 6 Enter any information necessary to configure the Satellite Server role.



To add a new database reference, you can use the Add Database Reference Wizard in the System and Network Administration application.

Task 2: Enable LIR

- 1 Start the Management Console (log on with Administrator privileges).
- 2 Click the **Systems** icon in the navigation pane.
- 3 Navigate to the OVPI Databases folder and select the central server.
- 4 Click **LIR Configuration**.

- 5 Select the **LIR enabled** check box.

Task 3: Add LIR mappings

- 1 Start the Management Console (log on with Administrator privileges).
- 2 Click the **Systems** icon in the navigation pane.
- 3 Navigate to the OVPI Databases folder and select the central server.
- 4 Click **LIR Configuration**.
- 5 Click **Add Mapping**.
- 6 From the Select Satellite Server list, select a satellite server to which to add a mapping.
- 7 Select the **Category** data table option.
- 8 Select **IP Access Rate** from the drop down list.
- 9 Select the **rate** data type.
- 10 Click **Add to List**.
- 11 If you want to add additional LIR mappings, click **Add to list** and repeat [step 6](#) through [step 10](#).
- 12 Click **OK**.
- 13 Click **Apply**.

A copy policy is automatically generated for the hourly data and for each LIR mapping that you add. The data type selected when adding an LIR mapping (in [step 9](#) above) determines the type of data copied that is defined in the generated copy policy (the type of data copied that is defined in the generated copy policy is for one greater than the data type selected in the LIR mapping). For example, if you select an hourly data type, a daily data copy policy is generated.

Task 4: Verify the automatically generated copy policies

Verify that a copy policy has been generated for the SHIPARData table and that the copy type is set correctly (to Property and Data):

- 1 Start the Management Console (log on with Administrator privileges).
- 2 Click the **Copy Policy** icon in the navigation pane to start the Copy Policy Manager.
- 3 Find the SHIPARData table and verify the copy type is set to Property and Data.

If a copy policy has not been generated for a table, do the following:

- 1 Click the **New Copy Policy** icon or select **File > New Copy Policy** from the Copy Policy Manager. The Copy Policy Wizard displays.
- 2 Click **Next**. The Satellite Server and Copy Policy Selection Page displays.
- 3 Select a satellite server from the pull down list. This is the satellite server from which data is copied to the central server.
- 4 Select **Single Table** and select SHIPARData from the pull down list.
- 5 Click **Next**. The Copy Type Selection Page displays.
- 6 Select **Property and Data**.
- 7 Click **Next**. The Summary page displays.
- 8 Verify the information in the summary window. If the information is not correct, you can modify it by clicking Back.

9 Click **Finish**.

If the copy type is not set to Property and Data, do the following:

- 1 Double-click the copy policy.
- 2 Select the **Property and Data** copy type.
- 3 Click **OK**.

Task 5: Modify the IPAR_Hourly_Process.pro file

The `IPAR_Hourly_Process.pro` file is found in the `{DPIPE_HOME}/scripts/` directory where `{DPIPE_HOME}` is the directory in which PI is installed.

Make the following change to this file:

- Find and comment out the following line:

```
{DPIPE_HOME}/bin/trend_sum -t RIPARData -e SSHIPARData -f  
{DPIPE_HOME}/scripts/SHIPARData_Keyid.sum
```

Configuring a Satellite Server

Follow these steps to configure each satellite server.

- 1 Modify the `{DPIPE_HOME}/lib/trendtimer.sched` file (where `{DPIPE_HOME}` is the directory in which PI is installed).

Make the following changes:

- Find and comment out the following line (only if the central server is not a polling server):

```
24:00+3:00 - - {DPIPE_HOME}/bin/trend_proc -f  
{DPIPE_HOME}/scripts/IPAR_DMF_Process.pro
```

- Find and change the following line (modify the daily processing time):

```
1:00+30 - - {DPIPE_HOME}/bin/trend_proc -f  
{DPIPE_HOME}/scripts/IPAR_Hourly_Process.pro
```

to

```
1:00+15 - - {DPIPE_HOME}/bin/trend_proc -f  
{DPIPE_HOME}/scripts/IPAR_Hourly_Process.pro
```

- 2 Modify the `IPAR_Hourly_Process.pro` file.

The `IPAR_Hourly_Process.pro` file is found in the `{DPIPE_HOME}/scripts/` directory where `{DPIPE_HOME}` is the directory in which PI is installed.

Make the following changes:

- Find and comment out the following lines:

```
{DPIPE_HOME}/bin/trend_sum -t SHVIPARData -e SHIPARInterfaceData -f  
{DPIPE_HOME}/scripts/SHIPARInterfaceData_Interface.sum
```

```
{DPIPE_HOME}/bin/trend_sum -t SHIPARInterfaceData -e SHIPARDeviceData  
-f {DPIPE_HOME}/scripts/SHIPARDeviceData_Cust_Device.sum
```

```
{DPIPE_HOME}/bin/trend_sum -t SHIPARInterfaceData -e SHIPARDeviceData  
-f {DPIPE_HOME}/scripts/SHIPARDeviceData_Cust.sum
```

```
{DPIPE_HOME}/bin/trend_sum -t SHIPARInterfaceData -e SHIPARDeviceData  
-f {DPIPE_HOME}/scripts/SHIPARDeviceData_All.sum
```

```
{DPIPE_HOME}/bin/trend_sum -t SHIPARInterfaceData -e SHIPARDeviceData  
-f {DPIPE_HOME}/scripts/SHIPARDeviceData_Device.sum
```

- **Find and uncomment the following lines:**

```
begin:IPAR_2 wait
```

```
end:IPAR_2
```

- 3** Configure polling policies for the Cisco IPAccessRate Datapipe. Make sure that each interface is polled by one satellite server only.

System Clocks

Make sure that the system clock on each satellite server is synchronized with the system clock on the central server.

4 Sample Reports

Near Real Time Interface Activity

This report highlights RLO interfaces with a high proportion of filtered traffic. The entries in the selection table sort according to the filtered/switched ratio, highest to lowest. If you see an interface with a high proportion of filtered traffic, you can inspect the rate limiting rules that apply to the interface.

The graphs provide details for the ratio of filtered traffic to all traffic (in bytes), the ratio of filtered traffic to switched traffic, and the current burst traffic rate. The graphs show data collected over the previous six hours, for switched traffic, filtered traffic, and burst rate. The graph at the bottom shows utilization, errors, and discards over the previous six hours.

Recent IP Access Rate Activity

The design of this report is unusual compared to most PI reports. If you select a customer from the pick-list, the table to the right populates with a list of devices operated by that customer that have seen rate-limited interfaces with activity during the previous hour. The list of devices also indicates the amount of traffic filtered, the amount switched, and the ratio of filtered to switched traffic expressed as a percentage. Once you select a device from the list of devices, the three tables below update simultaneously, showing:

- Provisioning information at the device level
- The rate-limited interfaces on the selected device
- The RLOs configured for each interface

The graph at the bottom of the report compares the volume of conform traffic to the volume of exceed traffic from multiple perspectives—the device, the interface, and the RLO.

Historical IP Access Rate Activity

This report looks at yesterday's filtering activity and sorts devices by filtering from highest to lowest. The list of devices indicates totals for switched packages, filtered packets, switched bytes, and filtered bytes. Drill down on a selected device to display a list of rate limited interfaces.

Use this report to determine which devices are exceeding rate limits and which customers may be transmitting more data than their service level can accommodate. Use the hourly chart at the bottom of the report to find out exactly when filtering took place. Compare the hourly chart to the daily and monthly charts to find out whether yesterday's filtering activity is consistent with a longer-term trend, or an isolated incident.

Inventory Report

This report provides a list of all the interfaces in the network and the rate limit objects configured for each interface. Use this report to examine customer configurations or to compare individual interfaces on different devices. The details about interfaces and rate limit objects are updated after every poll cycle. The list of customers is refreshed every evening.

Selecting a customer from the pick-list displays a list of the interfaces belonging to that customer that are configured with rate-limit objects. Select an interface from this list to display values for:

- Direction
- Rate index
- Conformance action
- Exceed action
- Limit
- Extended limit
- Access list number

IP Access Rate Reporting Near Real Time Interface Activity



The IP Access Rate Near Real Time report provides a detailed look at the performance of individual IP Access Rate Limit Objects and the interfaces on which they reside, up to the last poll cycle. Select an interface from the list to see filtered and switched metrics per Rate Limit object along with utilization, discards and error counts for the parent interface over the previous 6 hours.

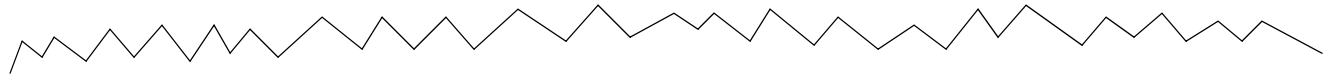
Rate Limiting Interfaces Active Interfaces With Rate Limits Over Previous 6 Hours

Device	Interface	ifSpeed	Admin Status	Customer	Filtered / Switched	Filtered %
63.237.13.1	Hssi1/0	In: 44.2 Mb/s Out: 44.2 Mb/s	Up	Customer 2	305.9 Mb : 677.7 Mb	31
64.214.129.1	Serial5/0/0	In: 44.2 Mb/s Out: 44.2 Mb/s	Up	Customer Unassigned	2.3 Mb : 50.5 Mb	4
64.214.130.1	Serial5/0/0	In: 44.2 Mb/s Out: 44.2 Mb/s	Up	Customer Unassigned	2.3 Mb : 50.5 Mb	4
63.238.176.1	Serial1/0:19	In: 512.0 Kb/s Out: 512.0 Kb/s	Up	Customer Unassigned	11.4 Mb : 376.0 Mb	3
65.211.170.1	Ethernet0/1	10 Mb/s	Up	Customer Unassigned	1.6 Mb : 69.0 Mb	2
65.171.113.1	FastEthernet0/0	100 Mb/s	Up	Customer Unassigned	441.0 Kb : 31.4 Mb	1
63.238.176.1	Serial1/0:5	In: 512.0 Kb/s Out: 512.0 Kb/s	Up	Customer Unassigned	3.0 Kb : 3.3 Mb	0
66.205.94.1	FastEthernet5/0/0	100 Mb/s	Up	Customer 4	0 bytes : 206.5 Kb	0
63.238.176.1	Serial1/0:1	In: 256.0 Kb/s Out: 256.0 Kb/s	Up	Customer Unassigned	0 bytes : 0 bytes	0
65.214.129.1	Serial1/0:0	In: 4.528 Mb/s Out: 4.528 Mb/s	Up	Customer Unassigned	0 bytes : 0 bytes	0

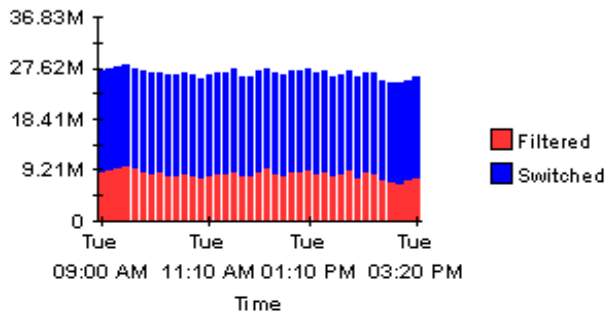
Rate Limit Objects on '63.237.13.1: Hssi1/0' Over Previous 6 Hours

Dir	RateIndex	Conform Act.	Exceed Act.	Limit	Rate	ExtLimit	Type	Accldx	Filtered / Switched	Filter %
Output	2	Continue	drop	64,000	256,000	64,000	All	-	305.9 Mb : 677.7 Mb	31.101



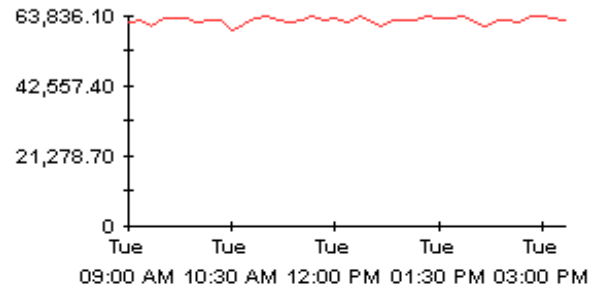


**Filtered / Switched Bytes
Over Previous 6 Hours**



Burst Rate | Permitted Prob

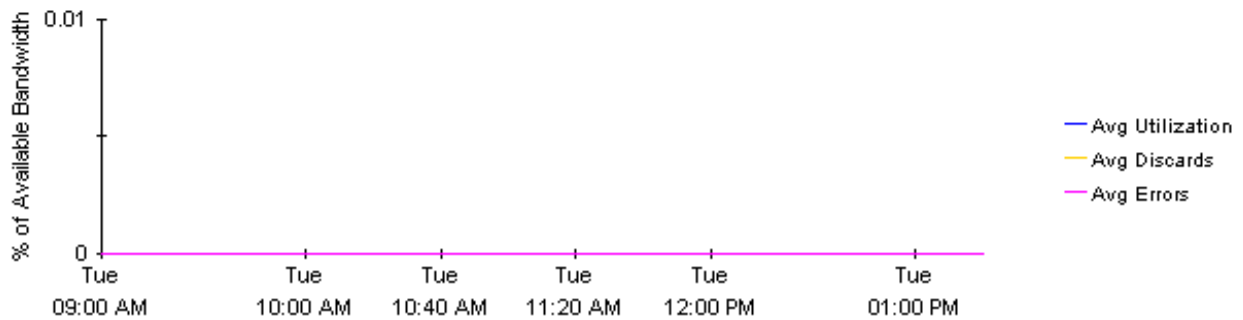
Burst Rate



bound | Outbound | Both (Half Duplex Only)

Average Inbound Utilization, Discards and Errors for 63.237.13.1: Hssi1/0

% of Available Bandwidth in the Previous 6 hours



IP Access Rate Reporting

Recent IP Access Rate Activity



The Recent IP Access Rate Devices Activity provides lists of managed devices, split by customer, and focuses on filtering activity within the most recent summarized hour. An 'X' to the left of a device name indicates that a summary has not been performed recently and it should be investigated. Use this report to look at hourly activity on a device over the previous few days. Use the lower selection lists to narrow in on exactly which Rate Limit is dropping the traffic.

Customer		Device Rate Limit Figures			
For Most Recent Summarized Hour					
Customer	Id	Device	Location	Volume Filtered/Switched	Filtered %
Customer Unassigned	-2	65.171.113.1	Location Unassigned	8.1 Mb : 88.9 Mb	8.375
Hewlett Packard	4	66.205.94.1	Location Unassigned	8.4 Mb : 99.6 Mb	7.771
Huge Corp	2	64.214.130.1	Location Unassigned	137.1 Kb : 2.4 Mb	5.282
		64.214.129.1	Location Unassigned	137.1 Kb : 2.4 Mb	5.275
		65.194.90.1	Location Unassigned	0 bytes : 38.5 Kb	0.000
		65.194.91.1	Location Unassigned	0 bytes : 38.5 Kb	0.000
		63.238.176.1	Location Unassigned	0 bytes : 630.6 Kb	0.000
		65.207.187.1	Location Unassigned	0 bytes : 38.5 Kb	0.000
		65.211.170.1	Location Unassigned	0 bytes : 3.6 Mb	0.000
		65.212.180.1	Location Unassigned	0 bytes : 0 bytes	0.000
		65.216.159.1	Location Unassigned	0 bytes : 38.5 Kb	0.000

Sys Contact N/A	Sys Name ICS-327Main	Sys Location N/A	Sys Descr Cisco Internetwork O ...
---------------------------	--------------------------------	----------------------------	--



Rate Limiting Interface Data
For Most Recent Summarized Hour

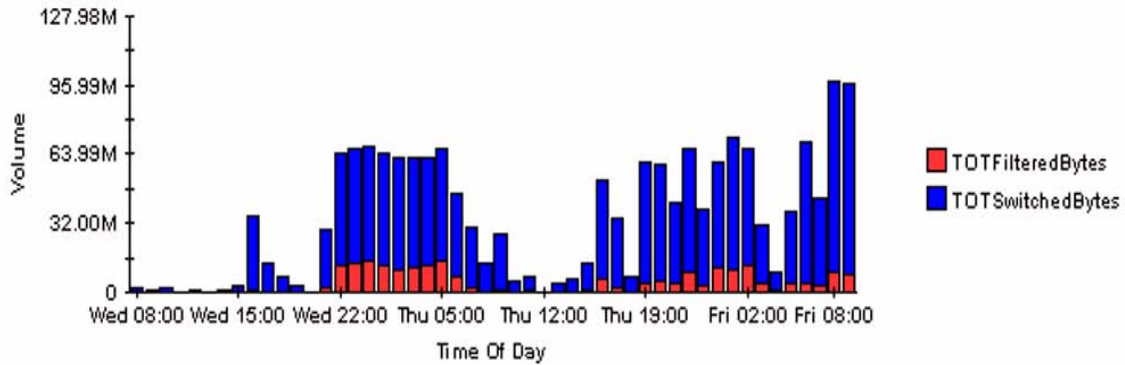
Interface	ifSpeed	Admin Status	Protocol	Filtered / Switched	Filtered %
FastEthernet0/0	100 Mb/s	Up	ethernet-ismacd	8.1 Mb : 88.9 Mb	8.375

Rate Limit Objects on '65.171.113.1: FastEthernet0/0'
For Most Recent Summarized Hour

Dir	RateIndex	Conform Act.	Exceed Act.	Limit	Rate	ExtLimit	Type	Accldx	Filtered / Switched	Filter %
Output	1	Transmit	Drop	8,000	128,000	8,000	All	-	4.3 Mb : 43.5 Mb	9.049
Input	1	Transmit	Drop	8,000	128,000	8,000	All	-	3.8 Mb : 45.3 Mb	7.719

Devices | Interfaces | Rate Limits |

Hourly Filtering for 65.171.113.1: -2



IP Access Rate Reporting

Historical IP Access Rate Activity



The Historical IP Access Rate Devices Activity provides lists of managed devices, split by customer, and focuses on those devices which are filtering the highest proportion of their traffic due to Rate Limit objects. Use the report to decide which devices are more heavily utilized than their current service level allows. Filter the display using the built in parameters.

Device Rate Limit Figures For Yesterday

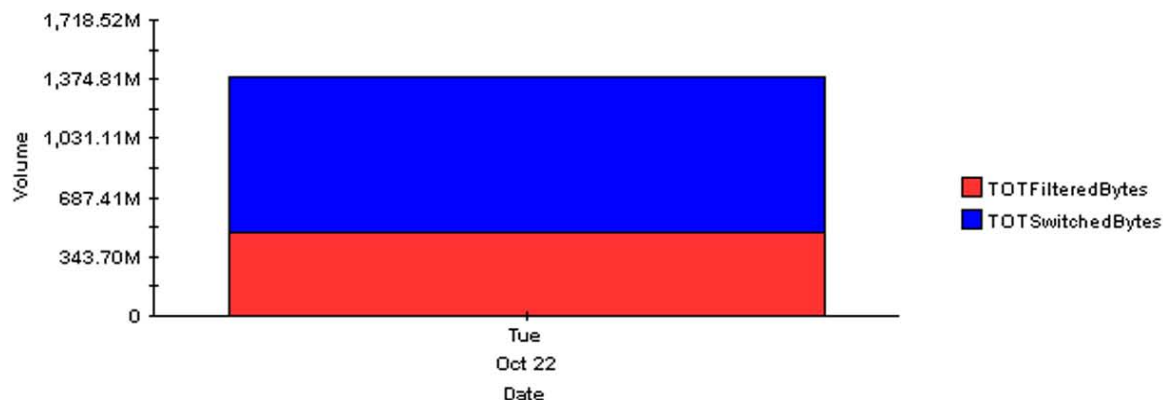
Customer	Id	Device	Vendor Name	Volume Filtered/Switched	Packets Filtered/Switched	Filtered %
All Customers	-1					
Customer Unassigned	-2					
Hewlett Packard	4	63.237.13.1	Cisco 3640	479.5 Mb : 912.5 Mb	820049 : 15291143	34
Huge Corp	2	65.171.113.1	Cisco 2620	55.8 Mb : 301.5 Mb	42803 : 297332	16
		64.214.130.1	Cisco 7513z	4.4 Mb : 130.0 Mb	3353 : 441922	3
		64.214.129.1	Cisco 7513z	4.4 Mb : 130.1 Mb	3353 : 441931	3
		63.238.176.1	Cisco 7204	8.9 Mb : 365.8 Mb	8156 : 878962	2
		65.211.170.1	Cisco 2611	7.7 Mb : 515.8 Mb	5672 : 957606	1
		65.194.90.1	Cisco 2620	0 bytes : 1.8 Mb	0 : 24645	0
		65.194.91.1	Cisco 2620	0 bytes : 1.8 Mb	0 : 24645	0
		66.205.94.1	Cisco 7507	0 bytes : 201.4 Kb	0 : 1614	0
		65.207.187.1	Cisco 2620	0 bytes : 1.8 Mb	0 : 24645	0
		65.212.180.1	Cisco 2620	0 bytes : 0 bytes	0 : 0	0
		65.216.159.1	Cisco 2620	0 bytes : 1.8 Mb	0 : 24643	0

Rate Limiting Interfaces

Interface	ifSpeed	Admin Status	Protocol
Hssi1/0	In: 44.2 Mb/s Out: 44.2 Mb/s	Up	propPointToPointSerial

Daily | Hourly | Monthly

Daily Filtering for 63.237.13.1: All



IP Access Rate Reporting

IP Access Rate Inventory



The IP Access Rate Inventory report provides a list of all interfaces on the network with Rate Limiting Objects configured. Use the report to examine the configurations for entire customers or to compare individual interfaces on different devices. The interface and Rate Limit object details are updated after every poll cycle. The Customer list is refreshed every evening.

Customer	Customer Id
Customer 2	2
Customer 4	4
Customer Unassigned	-2

Rate Limiting Interfaces


Device	Interface	ifSpeed	Admin Status	Protocol
63.237.13.1	Hssi1/0	In: 44.2 Mb/s Out: 44.2 Mb/s	Up	propPointToPointSerial

Rate Limit Objects on '63.237.13.1: Hssi1/0'

Dir	RateIndex	Conform Act.	Exceed Act.	Limit	Rate	ExtLimit	Type	Accldx
Output	2	Continue	Drop	64,000	256,000	64,000	All	-

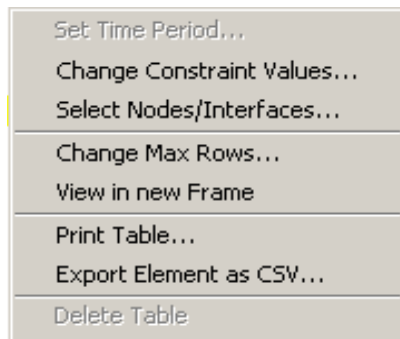
A Editing Tables and Graphs

Any table or graph can be viewed in several ways. While the default view is usually adequate, you can easily change to a different view. If you are using Report Viewer, right-click the object to display a list of view options. If you are using the Web Access Server, follow these steps to change the default view of a table or graph:

- 1 Click **Preferences** on the links bar.
- 2 Expand **Reports** in the navigation frame.
- 3 Click **Viewing**.
- 4 Select the **Allow element editing** box.
- 5 Click **Apply**.
- 6 Click  (the Edit icon) next to the table or graph.

View Options for Tables

Right-clicking a table, or selecting the Edit Table icon if you are using the Web Access Server, opens a list of table view options.



Select **Set Time Period** to alter the relative time period (relative to now) or set an absolute time period. The Set Time Period window opens.

You may shorten the period of time covered by the table from, for example, 42 days to 30 days or to 7 days. If you are interested in a specific period of time that starts in the past and stops *before* yesterday, click **Use Absolute Time** and select a Start Time and an End Time.

Select **Change Constraint Values** to loosen or tighten a constraint, thereby raising or lowering the number of elements that conform to the constraint. The Change Constraint Values window opens. To loosen a constraint, set the value lower; to tighten a constraint, set the value higher.

The **Select Nodes/Interfaces** allows you to change the scope of the table by limiting the table to specific nodes, specific interfaces, or a specific group of nodes or interfaces. The Select Node Selection Type window opens.

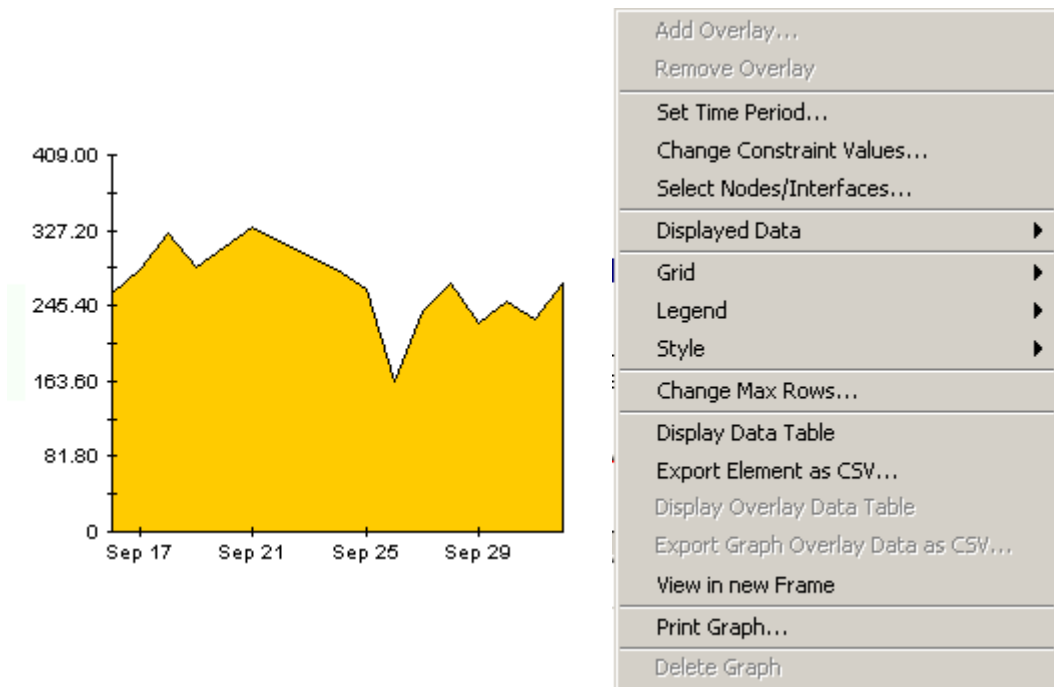
Change Max Rows increases or decreases the number of rows in a table. The default is 50. If you expand the default, the table may take more time to open. If you are trending a large network, using the default ensures that the table opens as quickly as possible.

View in new Frame opens the table in a Table Viewer window, shown below. If necessary, make the data in the table more legible by resizing the window.

Table Viewer					
Polled IP QoS Statistics Data - Input Over Previous 6 Hours					
Direction	IpPrecedence	Switched Bytes	Switched Pkts	Time Period	
Input	0	105,688	675	Tue Oct 29 07:00 AM	
Input	1	0	0	Tue Oct 29 07:00 AM	
Input	2	0	0	Tue Oct 29 07:00 AM	
Input	3	0	0	Tue Oct 29 07:00 AM	
Input	4	0	0	Tue Oct 29 07:00 AM	
Input	5	0	0	Tue Oct 29 07:00 AM	
Input	6	600	5	Tue Oct 29 07:00 AM	
Input	7	0	0	Tue Oct 29 07:00 AM	
Input	0	98,334	638	Tue Oct 29 06:45 AM	
Input	1	0	0	Tue Oct 29 06:45 AM	
Input	2	0	0	Tue Oct 29 06:45 AM	
Input	3	0	0	Tue Oct 29 06:45 AM	

View Options for Graphs

Right-clicking a graph, or clicking the Edit Graph icon if you are using the Web Access Server, opens the following list of view options.

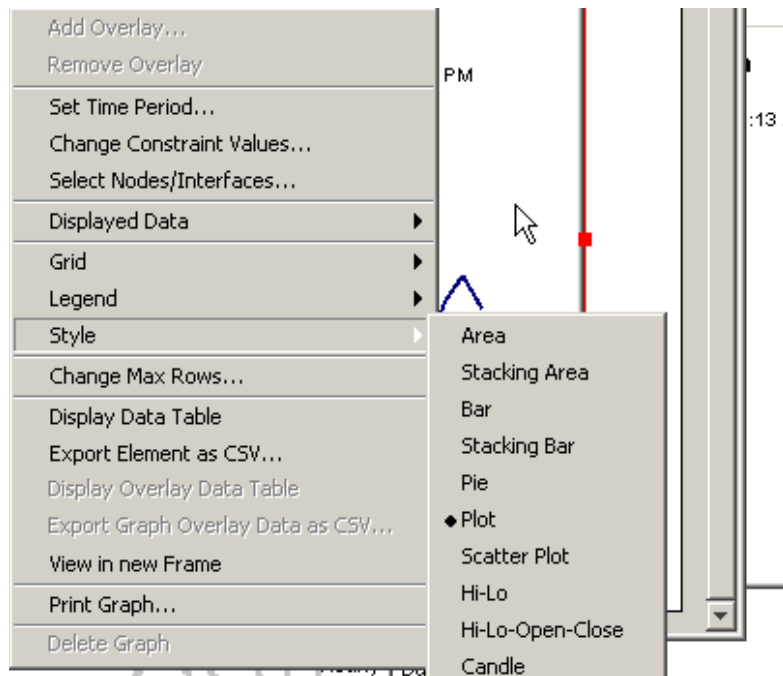


The following table provides details about each option.

Option	Function
Set Time Period	Same as the table option shown above.
Change Constraint Values	Same as the table option shown above.
Select Nodes/Interfaces	Same as the table option shown above.
Displayed Data	For every point on a graph, display data in a spreadsheet.
Grid	Add these to the graph: X axis grid lines Y axis grid lines X and Y axis grid lines
Legend	Delete or reposition the legend.
Style	See the illustrations below.
Change Max Rows...	Same as the table option shown above.
Display Data Table	See below.
Export Element as CSV...	Same as the table option shown above.
View in New Frame	Opens graph in a Graph Viewer window.
Print Graph	Same as the table option shown above.

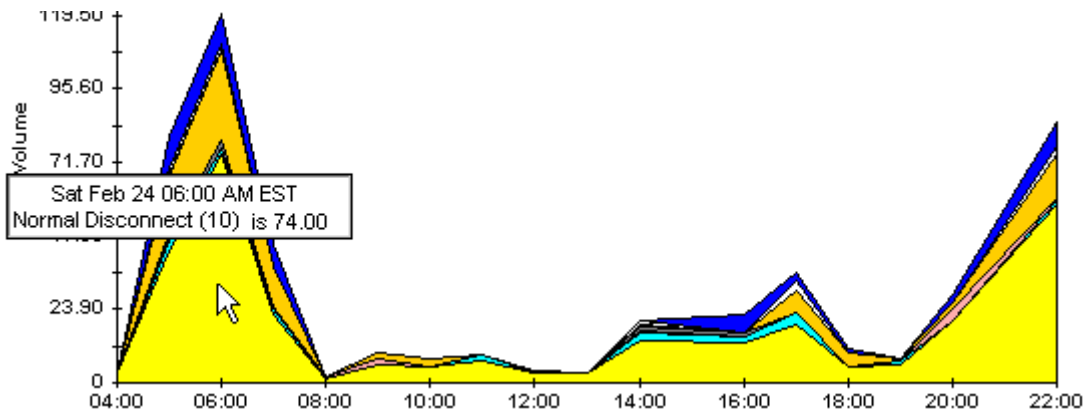
Style Options

Select **Style** to display a list of seven view options for graphs.



Style > Area

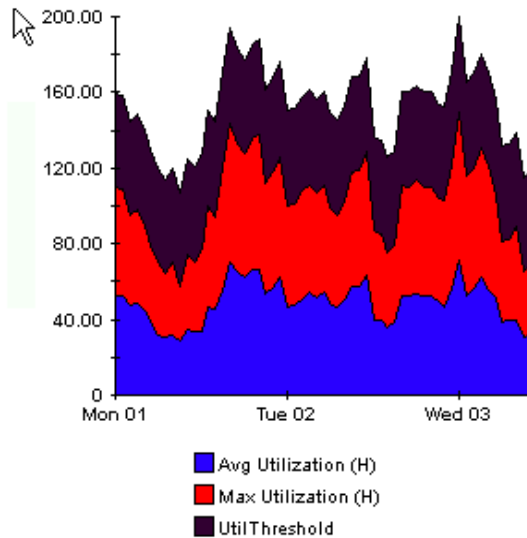
The plot or bar chart changes to an area graph. While relative values and total values are easy to view in this format, absolute values for smaller data types may be hard to see. Click anywhere within a band of color to display the exact value for that location



To shorten the time span of a graph, press SHIFT+ALT and use the left mouse button to highlight the time span you want to focus on. Release the mouse button to display the selected time span.

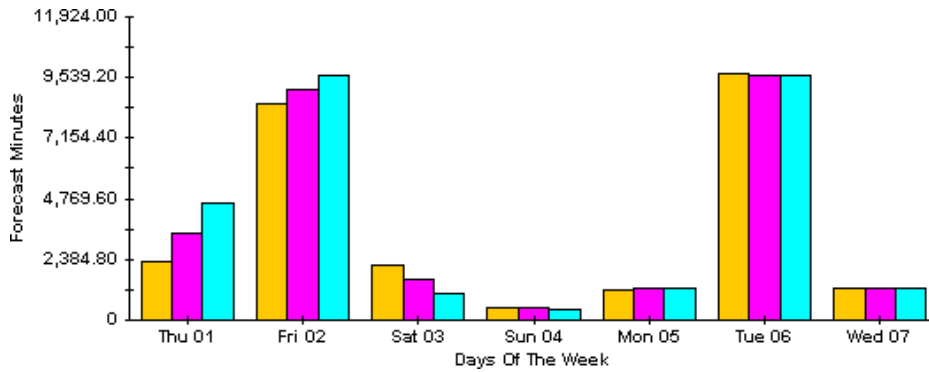
Style > Stacking Area

The area or plot graph changes to a stacking area graph. This view is suitable for displaying a small number of variables.



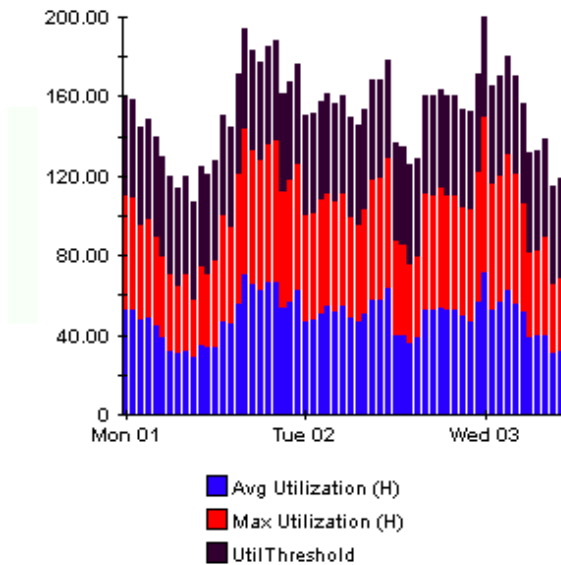
Style > Bar

The graph changes to a bar chart. This view is suitable for displaying relatively equal values for a small number of variables. There are three variables in the graph below.



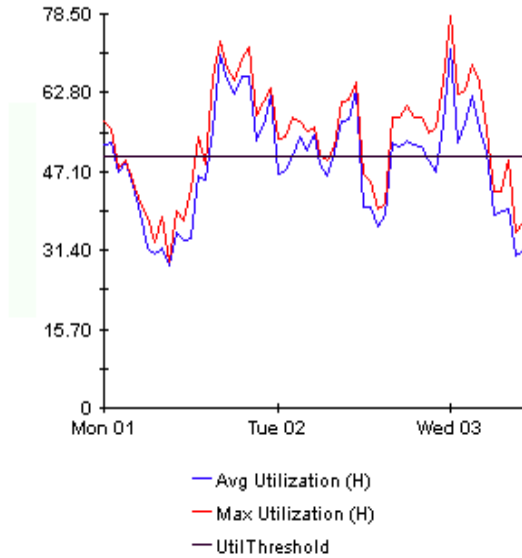
Style > Stacking Bar

The plot or area graph changes to a stacking bar chart. If you increase the width of the frame, the time scale becomes hourly. If you increase the height of the frame, the call volume shows in units of ten.



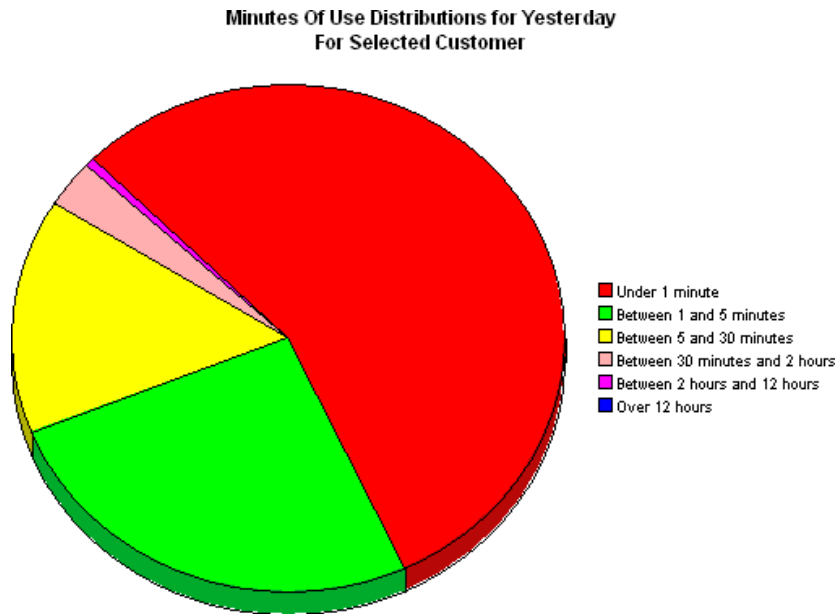
Style > Plot

Bands of color in an area graph change to lines. If you adjust the frame width, you can make the data points align with hour; if you adjust the frame height, you can turn call volume into whole numbers.



Style > Pie

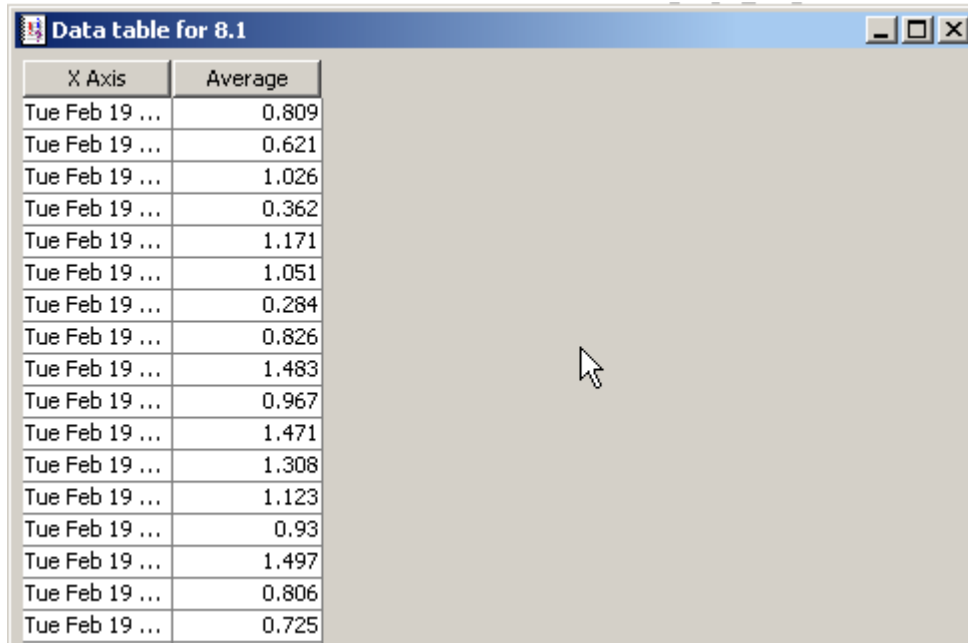
An area graph becomes a pie chart. Bands in an area graph convert to slices of a pie and the pie constitutes a 24-hour period. This view is helpful when a small number of data values are represented and you are looking at data for one day.



If you are looking at data for more than one day, you will see one pie graph for each day.

Display Data Table

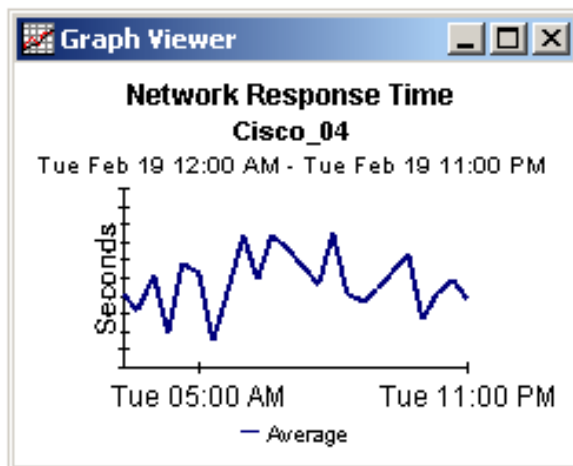
This option changes a graph into a spreadsheet.



X Axis	Average
Tue Feb 19 ...	0.809
Tue Feb 19 ...	0.621
Tue Feb 19 ...	1.026
Tue Feb 19 ...	0.362
Tue Feb 19 ...	1.171
Tue Feb 19 ...	1.051
Tue Feb 19 ...	0.284
Tue Feb 19 ...	0.826
Tue Feb 19 ...	1.483
Tue Feb 19 ...	0.967
Tue Feb 19 ...	1.471
Tue Feb 19 ...	1.308
Tue Feb 19 ...	1.123
Tue Feb 19 ...	0.93
Tue Feb 19 ...	1.497
Tue Feb 19 ...	0.806
Tue Feb 19 ...	0.725

View in New Frame

The graph opens in a Graph Viewer window. Improve legibility by resizing the window.



Glossary

acclidx

Access List Number. The index to the access list if Rate Limit Type is either quickAcc or standardAcc.

conform act

Conform Action. The action taken for those packets that conformed with the rate limit.

exceed act

Exceed Action. The action taken for those packets that exceeded the rate limit.

ext limit

Extended limit. The excess burst size in bytes. The amount of traffic, in bytes, in excess of the burst limit that may be permitted by the rate limit rule.

filtered

A byte or packet that exceeded the rate limit and was dropped at the interface.

filtered/switched ratio

A low ratio indicates that few packets are being dropped, a high ratio indicates that many packets are being dropped. The end user wants to keep the ratio low. The service provider wants to prevent congestion on the backbone to a minimum. A high ratio could indicate that a customer needs a different service level.

limit

Traffic above the CIR that is instantly permitted by the rate limit rule. Synonymous with normal burst size measured in bytes.

Near Real Time (NRT)

A report containing a rolling average for performance over the last six hours. The most recent data in this report was collected by the most recent poll, which probably took place within the last 15 minutes.

rate data

This is an PI term. Rate data is data as it was collected; the actual samples, without summarizing the data by hour. Rate data appears in Near Real Time reports.

rate index

An arbitrary index for rate limit objects. It will increase as the list is traversed, but may skip.

rate

Transmission rate or sustained rate permitted by the rate limit rule.

rate limit object

A rule or regulator applied to traffic at the interface level, moving in a given direction. Rate limiters are defined by a series of settings and actions. Typically, lower priority traffic will pass by multiple limiters, while higher priority traffic will be subject to one limiter only.

switched

A byte or packet that was transmitted normally and was not dropped.

Index

A

applying constraints, 13

B

burst rate, 25

C

change max rows option, 35

collection_manager, 16

custom views of data or property tables, 17

D

Datapipe Manager, 17

demo package, 13

Display Data Table, 35

displayed data option, 35

distributed environments, 16

E

editing parameters, 13

G

graph view options, 33

grid options, 35

group_manager, 16

group accounts, 12

group filters, 12

H

Historical Activity Report, 10

I

integration with NNM, 16

Inventory Report, 10

IPAccessRate_Reporting_Thresholds, 19

IPAccessRate_Reporting_Thresholds, 16

L

legend options, 35

N

Near Real Time Activity, 10

Near Real Time Interface Activity, 25

P

polling policies, 16

R

Recent Activity Report, 10

S

style options for graphs, 35

system clocks, 24

T

table view options, 33

Thresholds Module, 16

U

upgrading an earlier version of IP Access Rate, 18

Use Absolute Time, 33

V

view in new frame, 34

We appreciate your feedback!

If an email client is configured on this system, by default an email window opens when you click on the bookmark “Comments”.

In case you do not have the email client configured, copy the information below to a web mail client, and send this email to **docfeedback@hp.com**

Product name:

Document title:

Version number:

Feedback:

