

HP Operations Orchestration

For the Windows and Linux

Software Version: Content Pack 8

HP Integrated Lights Out (iLO) Integration Guide

Document Release Date: April 2012

Software Release Date: April 2012



Legal Notices

Warranty

The only warranties for HP products and services are set forth in the express warranty statements accompanying such products and services. Nothing herein should be construed as constituting an additional warranty. HP shall not be liable for technical or editorial errors or omissions contained herein.

The information contained herein is subject to change without notice.

Restricted Rights Legend

Confidential computer software. Valid license from HP required for possession, use or copying. Consistent with FAR 12.211 and 12.212, Commercial Computer Software, Computer Software Documentation, and Technical Data for Commercial Items are licensed to the U.S. Government under vendor's standard commercial license.

Copyright Notice

© Copyright 2012 Hewlett-Packard Development Company, L.P.

Trademark Notices

Adobe™ is a trademark of Adobe Systems Incorporated.

Microsoft® and Windows® are U.S. registered trademarks of Microsoft Corporation.

UNIX® is a registered trademark of The Open Group.

This product includes an interface of the 'zlib' general purpose compression library, which is Copyright © 1995-2002 Jean-loup Gailly and Mark Adler.

Documentation Updates

The title page of this document contains the following identifying information:

- Software Version number, which indicates the software version.
- Document Release Date, which changes each time the document is updated.
- Software Release Date, which indicates the release date of this version of the software.

To check for recent updates or to verify that you are using the most recent edition of a document, go to:

<http://h20230.www2.hp.com/selfsolve/manuals>

This site requires that you register for an HP Passport and sign in. To register for an HP Passport ID, go to:

<http://h20229.www2.hp.com/passport-registration.html>

Or click the **New users - please register** link on the HP Passport login page.

You will also receive updated or new editions if you subscribe to the appropriate product support service. Contact your HP sales representative for details.

Support

Visit the HP Software Support Online web site at:

<http://www.hp.com/go/hpsoftwaresupport>

This web site provides contact information and details about the products, services, and support that HP Software offers.

HP Software online support provides customer self-solve capabilities. It provides a fast and efficient way to access interactive technical support tools needed to manage your business. As a valued support customer, you can benefit by using the support web site to:

- Search for knowledge documents of interest
- Submit and track support cases and enhancement requests
- Download software patches
- Manage support contracts
- Look up HP support contacts
- Review information about available services
- Enter into discussions with other software customers
- Research and register for software training

Most of the support areas require that you register as an HP Passport user and sign in. Many also require a support contract. To register for an HP Passport ID, go to:

<http://h20229.www2.hp.com/passport-registration.html>

To find more information about access levels, go to:

http://h20230.www2.hp.com/new_access_levels.jsp

Contents

- HP Integrated Lights Out (iLO) Integration Guide..... 1
- Contents..... 5
- Introduction..... 6
 - Purpose of the iLO Integration 6
 - Supported Versions..... 6
 - Downloading OO Releases and Documents on HP Live Network..... 6
- Getting Started with the iLO Integration..... 8
 - iLO Use Cases..... 8
 - iLO — OO Integration Architecture..... 10
 - Location of iLO Integration Operations and Flows in OO Studio..... 10
- Troubleshooting..... 12
 - Troubleshooting Overview..... 12
 - General Troubleshooting Procedures and Tools..... 12
 - Error Messages..... 12
- Security..... 14
- OO Tools You Can Use with the iLO Integration..... 15

Chapter 1

Introduction

This chapter includes:

Purpose of the iLO Integration.....	6
Supported Versions.....	6
Downloading OO Releases and Documents on HP Live Network.....	6

Purpose of the iLO Integration

This integration enables administrators to build HP Operations Orchestration (OO) flows that are integrated into Integrated Lights Out (iLO) management processors for HP Proliant Servers.

This document explains how this integration has been implemented and how the operations included communicate between OO and iLO.

Supported Versions

Operations Orchestration Version	Proliant iLO Version	Proliant iLO 2 Version	Proliant iLO 3 Version	Proliant iLO 4 Version
OO Content Pack 8	1.94 or later	1.60 or later	1.26 or later	1.01 or later

Downloading OO Releases and Documents on HP Live Network

HP Live Network provides an Operations Orchestration Community page where you can find and download supported releases of OO and associated documents.

To download OO releases and documents, visit the following site:

<https://hpln.hp.com/>

Note: This site requires that you register for an HP Passport and sign-in.

To register for an HP Passport ID:

1. Go to: <http://h20229.www2.hp.com/passport-registration.html>

Or

Click the **New users - please register** link on the HP Passport login page.

2. On the HP Live Network page, click **Operations Orchestration Community**. The Operations Orchestration Community page contains links to announcements, discussions, downloads, documentation, help, and support.
3. On the left-hand side, click **Operations Orchestration Content Packs**.
4. In the **Operations Orchestration Content Packs** box, click **Content**. The HP Passport and sign-in page appears.
5. Enter your user ID and Password to access to continue.
6. Click **HP Operations Orchestration 9.00**.
7. Search for the required HP Operations Orchestration Content Pack.

Chapter 2

Getting Started with the iLO Integration

This chapter includes:

iLO Use Cases.....	8
iLO — OO Integration Architecture.....	10
Location of iLO Integration Operations and Flows in OO Studio.....	10

iLO Use Cases

Following are the major use cases for the iLO integration, and the operations and flows that you can use to implement them.

1. Samples to show how to use the **Execute RIBCL** operation:

- Activate iLO License
- Deactivate iLO License
- Get Auto Power On
- Get iLO Firmware Version
- Set Unit ID Light State

2. Set Unit ID Light State:

- Create User
- Delete User
- Modify User

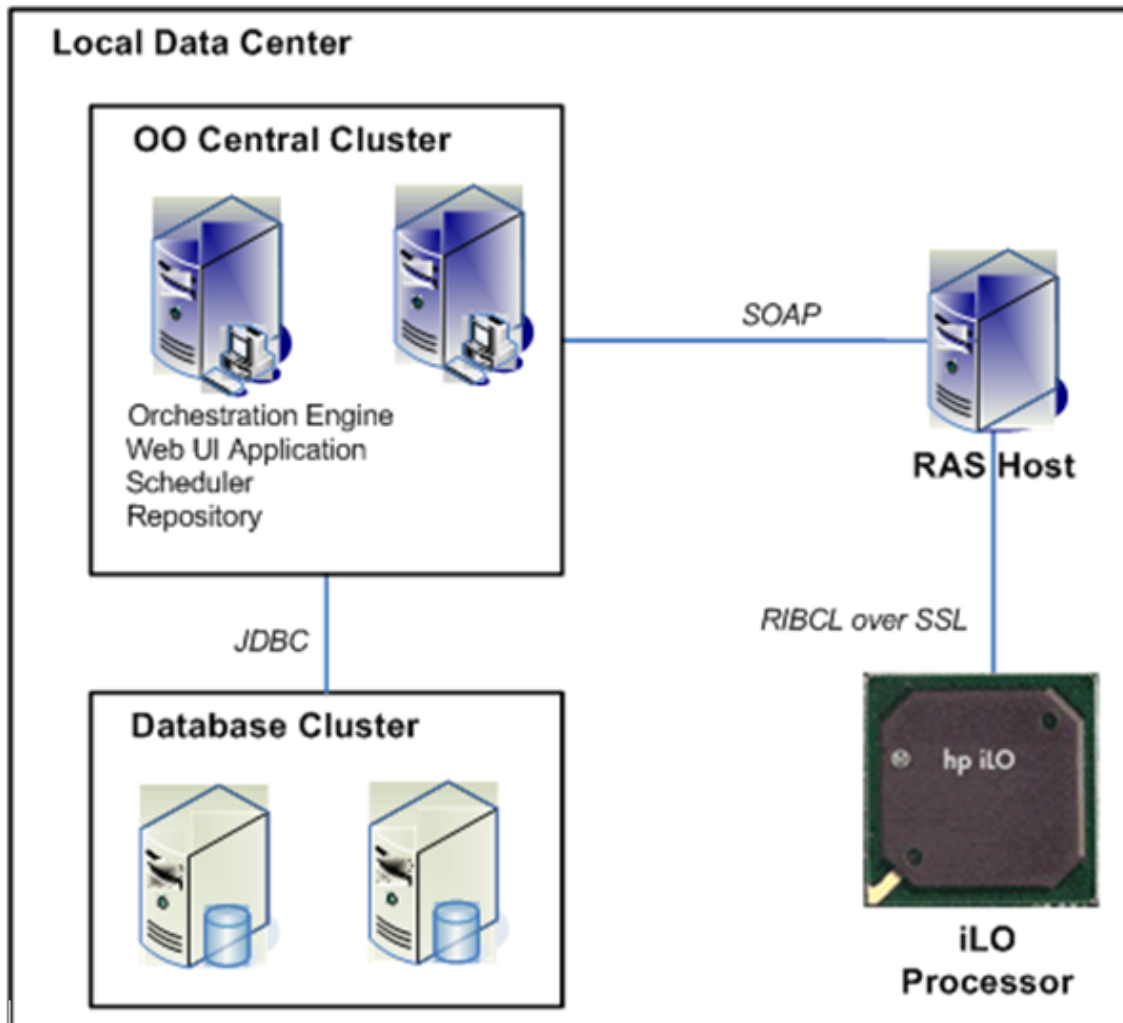
3. Manipulate the physical system's power state:

- Host Power Status
- Power On Host
- Get Power Cap Values
- Restart Host
- Restart iLO Processor
- Set Auto Power On
- Set Power Saver Mode

Enables you to set low power, dynamic power, high power, and OS controlled power on

- Set Power Cap
- 4. Manipulate iLO virtual media:
 - Insert Virtual Media
 - Eject Virtual Media
- 5. Manipulate host data:
 - Get Host Data
- 6. Run RIBCL script:
 - Execute RIBCL Script
- 7. Manage firmware update:
 - Update Firmware
- 8. Manage SNMP and Insight Manager (IM) Configuration:
 - Get SNMP IM Settings
 - Modify SNMP IM Settings

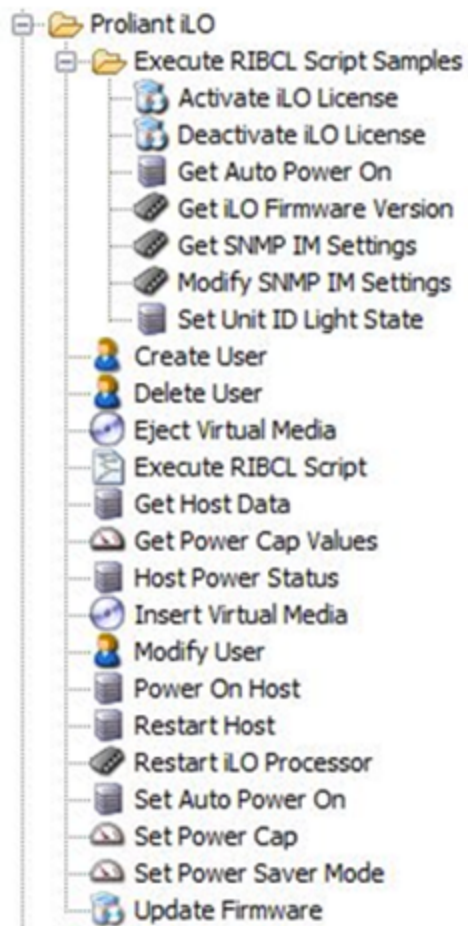
iLO — OO Integration Architecture



Location of iLO Integration Operations and Flows in OO Studio

The HP Proliant iLO integration includes the following operations and flows in the **OO Studio Library/Integrations/Hewlett-Packard/Proliant iLO/** folder.

The operations and flows apply to the original iLO version, iLO 2, iLO 3, and iLO 4 unless otherwise noted.



Chapter 3

Troubleshooting

This chapter includes:

Troubleshooting Overview.....	12
General Troubleshooting Procedures and Tools.....	12
Error Messages.....	12

Troubleshooting Overview

This section provides troubleshooting procedures and tools that you can use to solve problems you may encounter while using this integration. It also includes a list of the error messages you may receive while using the integration and offers descriptions and possible fixes for the errors.

General Troubleshooting Procedures and Tools

The best troubleshooting tools are the iLO Web interface and the iLO online configuration utility (HPONCFG). This integration uses the same protocol and scripting language as the HPONCFG utility.

Error Messages

- Failed to Connect

Could not establish a connection to the iLO system with the provided host name.

- Invalid Login

The specified iLO username and/or password are incorrect.

- This feature requires an installed license key

Virtual media and power cap features are enabled with the Proliant iLO Advanced Pack.

- An invalid Virtual Media option has been given

The only valid options are CDROM and FLOPPY.

- Unsupported Feature

The feature requested is not supported for the specified system. Different generations of HP Proliant systems have different power saving capabilities.

- The Value specified is invalid.

The submitted value for the Set Power Cap operation is not acceptable or is out of range.

- The firmware image file is not valid.

The firmware image file is not the right one for the targeted iLO.

- Firmware flash failed.

One cause for this error on iLO 3 or iLO 4 is that a bad firmware image file was given for the Update Firmware operation.

- Improper IP address

The given DNS or IP address is invalid.

Chapter 4

Security

HP Proliant iLO and iLO 2 are accessed via the RIBCL XML Scripting interface over SSL. HP Proliant iLO 3 and iLO 4 is accessed via the RIBCL XML Scripting interface over HTTP/1.1 using SSL. The SSL server certificates on the iLO processor are not verified. This is the same method used by the HPONCFG utility that is included with the Proliant Support Pack.

Chapter 5

OO Tools You Can Use with the iLO Integration

Following are OO tools that you can use with the iLO integration:

- **RSFlowInvoke.exe and JRSFlowInvoke.jar**

RSFlowInvoke (RSFlowInvoke.exe or the Java version, JRSFlowInvoke.jar) is a command-line utility that allows you to start a flow without using Central (although the Central service must be running). RSFlowInvoke is useful when you want to start a flow from an external system, such as a monitoring application that can use a command line to start a flow.

- **Web Services Wizard (wswizard.exe)**

When you run the Web Services Wizard, you provide it with the WSDL for a given Web service. The WSDL string you provide as a pointer can be a file's location and name or a URL. The Web Services Wizard displays a list of the methods in the API of the Web service that you specify. When you run the wizard, pick the methods you want to use, and with one click for each method you have selected, the wizard creates an HP OO operation that can execute the method. This allows you to use the Web Services Wizard to create operations from your monitoring tool's API.

These tools are available in the Operations Orchestration home folder in **/Studio/tools/**.