

# HP Operations Orchestration Software

Software Version: 9.00

## *HP Universal Configuration Management Database Integration Guide*

Document Release Date: June 2010

Software Release Date: June 2010



## Legal Notices

### Warranty

The only warranties for HP products and services are set forth in the express warranty statements accompanying such products and services. Nothing herein should be construed as constituting an additional warranty. HP shall not be liable for technical or editorial errors or omissions contained herein.

The information contained herein is subject to change without notice.

### Restricted Rights Legend

Confidential computer software. Valid license from HP required for possession, use or copying. Consistent with FAR 12.211 and 12.212, Commercial Computer Software, Computer Software Documentation, and Technical Data for Commercial Items are licensed to the U.S. Government under vendor's standard commercial license.

### Copyright Notices

© Copyright 2009-2010 Hewlett-Packard Development Company, L.P.

### Trademark Notices

For information on open-source and third-party software acknowledgements, see in the documentation set for this release, Open-Source and Third-Party Software Acknowledgements (3rdPartyOpenNotices.pdf).

# On the Web: Finding OO support and documentation

There are two Web sites where you can find support and documentation, including updates to OO Help systems, guides, and tutorials:

- The OO Support site
- BSA Essentials Network

## Support

Documentation enhancements are a continual project at Hewlett-Packard Software. You can obtain or update the HP OO documentation set and tutorials at any time from the HP Software Product Manuals Web site. You will need an HP Passport to log in to the Web site.

### To obtain HP OO documentation and tutorials

1. Go to the HP Software Product Manuals Web site (<http://support.openview.hp.com/selfsolve/manuals>).
2. Log in with your HP Passport user name and password.

OR

If you do not have an HP Passport, click **New users – please register** to create an HP Passport, then return to this page and log in.

If you need help getting an HP Passport, see your HP OO contact.

3. In the **Product** list box, scroll down to and select **Operations Orchestration**.
4. In the **Product Version** list, click the version of the manuals that you're interested in.
5. In the **Operating System** list, click the relevant operating system.
6. Click the **Search** button.
7. In the **Results** list, click the link for the file that you want.

## BSA Essentials Network

For support information, including patches, troubleshooting aids, support contract management, product manuals and more, visit the following site: <http://www.hp.com/go/bsaessentialsnetwork>

This is the **BSA Essentials Network** Web page. To sign in:

1. Click **Login Now**.
2. On the **HP Passport sign-in** page, enter your HP Passport user ID and password and then click **Sign-in**.
3. If you do not already have an HP Passport account, do the following:
  - a. On the **HP Passport sign-in** page, click **New user registration**.
  - b. On the **HP Passport new user registration** page, enter the required information and then click **Continue**.
  - c. On the confirmation page that opens, check your information and then click **Register**.
  - d. On the **Terms of Service** page, read the Terms of use and legal restrictions, select the **Agree** button, and then click **Submit**.

4. On the **BSA Essentials Network** page, click **Operations Orchestration Community**.  
**The Operations Orchestration Community** page contains links to announcements, discussions, downloads, documentation, help, and support.

**Note:** Contact your OO contact if you have any difficulties with this process.

## In OO: How to find Help, PDFs, and tutorials

The HP Operations Orchestration software (HP OO) documentation set is made up of the following:

- Help for Central  
Central Help provides information to the following:
  - Finding and running flows
  - For HP OO administrators, configuring the functioning of HP OO
  - Generating and viewing the information available from the outcomes of flow runsThe Central Help system is also available as a PDF document in the HP OO home directory, in the \Central\docs subdirectory.
- Help for Studio  
Studio Help instructs flow authors at varying levels of programming ability.  
The Studio Help system is also available as a PDF document in the HP OO home directory, in the \Studio\docs subdirectory.
- Animated tutorials for Central and Studio  
HP OO tutorials can each be completed in less than half an hour and provide basic instruction on the following:
  - In Central, finding, running, and viewing information from flows
  - In Studio, modifying flowsThe tutorials are available in the Central and Studio subdirectories of the HP OO home directory.
- Self-documentation for operations and flows in the Accelerator Packs and ITIL folders  
Self-documentation is available in the descriptions of the operations and steps that are included in the flows.

# Table of Contents

- Warranty ..... ii
- Restricted Rights Legend ..... ii
- Trademark Notices ..... ii
- On the Web: Finding OO support and documentation ..... iii
  - Support ..... iii
  - BSA Essentials Network ..... iii
- In OO: How to find Help, PDFs, and tutorials ..... iv
- Overview of the HP UCMDB integration ..... 1
  - Use cases and scenarios ..... 1
- Versions ..... 1
- Architecture ..... 2
- Installation and configuration instructions ..... 2
- HP UCMDB Integration operations ..... 3
  - Common inputs in the integration ..... 3
- Operation specifics ..... 4
  - Add Object ..... 4
  - Add Relationship ..... 4
  - Delete Object ..... 5
  - Delete Relation ..... 5
  - Get Filtered Object by Type ..... 6
  - Get Neighboring Objects ..... 6
  - Get Object Attributes by Id ..... 7

Get Object List by Type .....	7
Get Query Name of View .....	7
Get Topology Map by Query Name .....	8
Get Topology Map by View Name .....	8
Modify Object Attribute(s) .....	8
Get Topology Map by Query Name with Parameters .....	8
Validate IP in UCMDB .....	9
Is Object Related To .....	9
Get Object List by Host Name .....	10
<b>Troubleshooting .....</b>	<b>10</b>
General troubleshooting procedures and tools .....	10
Error messages .....	11
<b>Security .....</b>	<b>14</b>
<b>Tools .....</b>	<b>14</b>

# Overview of the HP UCMDB integration

With the HP Universal Configuration Management Database (UCMDB) integration, administrators can build HP Operations Orchestration (OO) flows that are integrated with HP UCMDB.

This document explains how this integration has been implemented and how the integration OO operations communicate between OO and UCMDB.

## Use cases and scenarios

1. Execute a Topology Query and obtain a Topology Map:
  - Get Topology Map by Query Name
  - Get Topology Map by Query Name with Parameter
  - Get Topology Map by View Name
  - Get Query Name of View
2. Manage Configuration Items and relationships:
  - Add Object
  - Delete Object
  - Add Relationship
  - Delete Relation
  - Get Neighboring Objects
  - Get Filtered Object List by Type
  - Get Object List by Type
  - Get Object Attributes by Id
  - Modify Object Attribute(s)
3. UCMDB IP validation:
  - Validate IP in UCMDB
  - Get Object List By Host Name
  - Is Object Related To

## Versions

Operations Orchestration Version	HP Universal CMDB Version
9.00	7.0, 8.0, 9.0

# Architecture

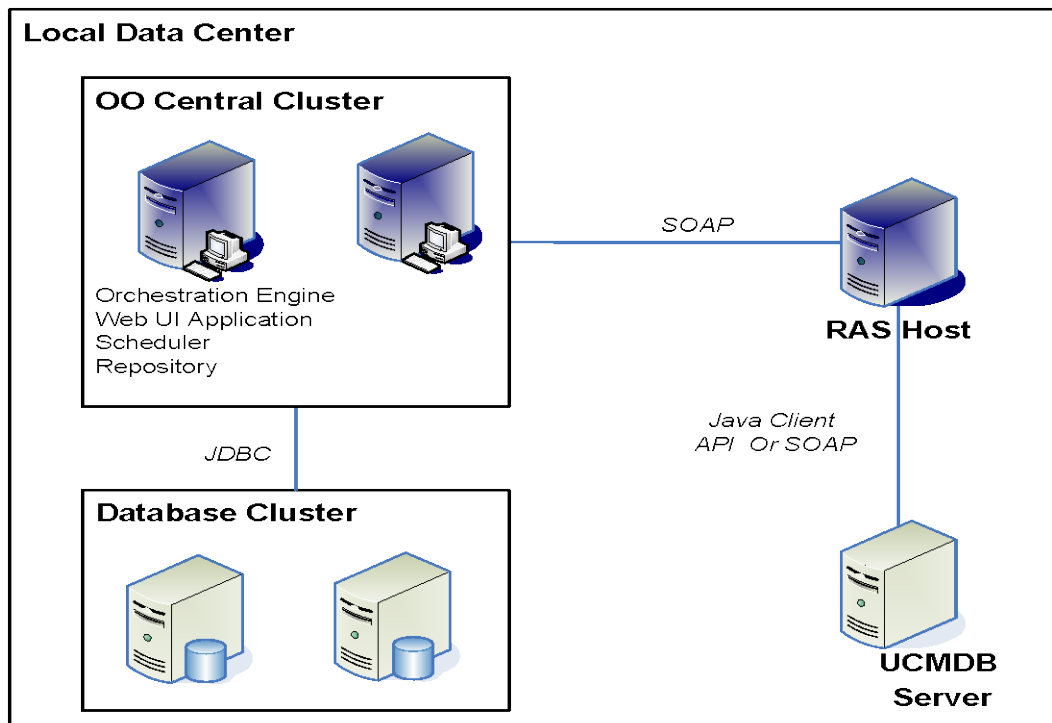


Figure 1 – Universal CMDB architecture

## Installation and configuration instructions

There is no special integration installation and configuration needed for the HP UCMDB integration. Just make sure that the system that has the RSJRAS service running on it can access the UCMDB server.

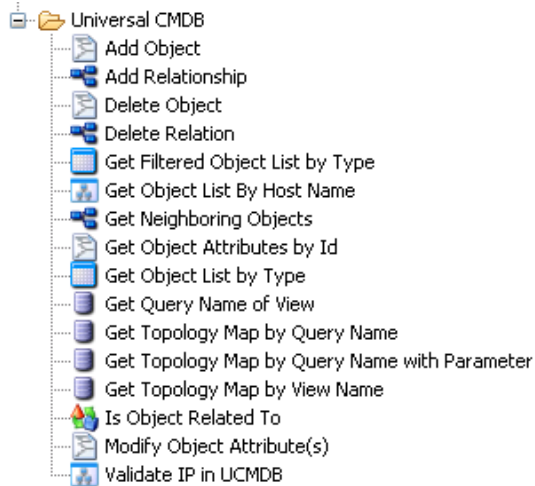
The default UCMDB access URL is:

<http://<ucmdbserver>:8080/ucmdb>

using the default username **admin** and the default password **admin**. However, we recommend creating an integration user on the UCMDB server. To learn how to create an integration user, refer to the UCMDB documentation.

# HP UCMDB Integration operations

The HP UCMDB integration includes the following operations in the Studio Library, in the Library/Integrations/Hewlett-Packard/Universal CMDB/ folder.



**Figure 2 - Universal CMDB flows and operations in Studio Library**

The operations support the following types of tasks:

- Add, remove, and update Configuration Items in the UCMDB.
- Add, remove, and update Relations in the UCMDB.
- Retrieve information about Configuration Items and Relationships in the UCMDB.
- Validate an IP or a host name in the UCMDB.

## Common inputs in the integration

The following inputs are used consistently throughout the HP UCMDB integration's operations.

### **cmdbHost**

The host of the UCMDB server. You can specify it as an IP address or DNS name.

### **cmdbPort**

The port of the UCMDB server on which the CMDB is running. The default port is **8080**.

### **username**

The username to connect to the UCMDB server.

### **password**

The password for the username.

### **cmdbVersion**

The major version number of UCMDB; for example, 7 for UCMDB 7.0, 8 for UCMDB 8.0, or 9 for UCMDB 9.0. The default is **7**.

# Operation specifics

## Add Object

The **Add Object** operation adds a Configuration Item to the UCMDB that has the key property or other properties specified in the **objectType** input. It returns the ID of the created Configuration Item.

### **objectType**

The Configuration Item Type (CIT) of the UCMDB. For example, you can specify an **objectType** of **nt**, which is the class name for the Configuration Item Type with the display name **Host**. You can find the class name in the CI Type Manager by clicking the **Details** tab for the CI item. The **Name** field shows the class name that should be used for the **objectType** input. **Note:** the class names can be different in UCMDB 7.0, 8.0, and 9.0.

### **prop**

A property for the **objectType** to add (*name=value*). For the **Add Object** operation, the key property for the type of CI to add must be entered if there are keys for that type of CI. For example, if you integrate with UCMDB 7.0 or 8.0, you must enter a CI with CIT **ip**, **prop ip\_address=19.35.55.34**. The **ip\_address** has to be unique in UCMDB. If you integrate with UCMDB 9.0, you must enter a CI with CIT **ip\_address**, **prop name=19.35.55.34**. The type of the property is determined automatically. You can add additional properties by creating extra **prop** inputs, each with a number appended to it, such as **prop1**. For example, if you integrate with UCMDB 7.0 or 8.0, enter **prop1 ip\_domain=battleground.ad** or **prop1 isvirtual=false**. If you integrate with UCMDB 9.0, enter **prop1 routing\_domain=battleground.ad** or **isvirtual=false**. You can find the property names in the CI Type Manager by clicking the **Attributes** tab for the CI item. The **Name** field shows the attribute name that should be used for **prop** input.

## Add Relationship

The **Add Relationship** operation adds a Relation between two Configuration Items to the UCMDB based on the type of relation specified in the **relationType** input. It returns the ID of the created relationship.

### **relationType**

The Configuration Item Type of the relation in the UCMDB. For example, if you integrate with UCMDB 7.0 or 8.0, **relationType contained** is the class name for the relation type with the display name **Contained**. If you integrate with UCMDB 9.0, **relationType containment** is the class name for the relation type with the display name **Containment**. You can find the relationship class names in the CI Type Manager by clicking the **Details** tab for the Relationships item. The **Name** field shows the class name that should be used for **relationType** input.

### **fromId**

The ID of the Configuration Item the relationship is from in the UCMDB.

### **fromType**

The Configuration Item Type the relationship is from in the UCMDB.

## **told**

The ID of the Configuration Item the relationship is to in the UCMDB.

## **toType**

The Configuration Item Type the relationship is to in the UCMDB.

## **prop**

A property for **relationType** to add (*name=value*). For example, if you integrate with UCMDB 7.0 or 8.0, you can specify **display\_label=My Contained** for **relationType contained**. If you integrate with UCMDB 9.0, you can specify **display\_label=My Containment** for **relationType containment**. The type of the property is determined automatically. You can add additional properties by creating extra **prop** inputs, each with a number appended to it, such as **prop1**. You can find the property names in the CI Type Manager by clicking the **Attributes** tab for the Relationships item. The **Name** field shows the attribute name that should be used for **prop** input.

# Delete Object

The **Delete Object** operation deletes a Configuration Item in the UCMDB based on the **objectId** and the **objectType** specified in the inputs.

## **objectId**

The Configuration Item ID in the UCMDB.

## **objectType**

The Configuration Item Type of the UCMDB. For example, you can specify an **objectType** of **nt** which is the class name for the CIT with the display name **Windows**. You can find the class name in the CI Type Manager by clicking the **Details** tab for the CI item. The **Name** field shows the class name that should be used for the **objectType** input. **Note:** The class names can be different in UCMDB 7.0, 8.0, and 9.0.

# Delete Relation

The **Delete Relation** operation deletes a Relation between two Configuration Items in the UCMDB.

## **relationId**

The Configuration Item ID for the Relation in the UCMDB.

## **relationType**

The Configuration Item Type of the relation in the UCMDB. For example, if you integrate with UCMDB 7.0 or 8.0, **relationType contained** is the class name for the relation type with the display name **Contained**. If you integrate with UCMDB 9.0, **relationType containment** is the class name for the relation type with the display name **Containment**. You can find the relationship class names in the CI Type Manager by clicking the **Details** tab for the Relationships item. The **Name** field shows the class name that should be used for **relationType** input.

## **fromId**

The ID of the Configuration Item the relationship is from in the UCMDB.

**told**

The ID of Configuration Item the relationship is to in the UCMDB.

## Get Filtered Object by Type

The **Get Filtered Object by Type** operation retrieves all of the Configuration Items that match the conditions specified in the UCMDB based on the **objectType**. It returns a list of the IDs of the Configuration Items.

### **objectType**

The Configuration Item Type of the UCMDB. For example, you can specify an **objectType** of **nt** which is the class name for the CIT with the display name **Windows**. You can find the class name in the CI Type Manager by clicking the **Details** tab for the CI item. The **Name** field shows the class name that should be used for **objectType** input. **Note:** The class names can be different in UCMDB 7.0, 8.0 and 9.0.

### **logicalOperator**

Specify **AND** if all conditions must be matched or **OR** if only one or more of conditions must match.

### **conditionAttributes**

A comma-delimited list of the attribute names of the Configuration Item that the conditions test. For example, **ip\_ismanaged**, **isvirtual** are the attributes for the Configuration Item Type **IP** (**ip** as class name) in UCMDB 7.0 and 8.0, or **IpAddress** (**ip\_address** as class name) in UCMDB 9.0 with the display attribute names **IP Is Managed** and **Is Virtual**.

### **conditionOperators**

A comma-delimited list of the comparisons to do, corresponding to the input **conditionAttributes**. For example, **=**, **!=**, **like**.

### **conditionValues**

A comma-delimited list of the values to compare the property to, corresponding to the input **conditionOperators**. For example, **true**, **true**.

## Get Neighboring Objects

The **Get Neighboring Objects** operation retrieves all the related Configuration Items based on **objectId** and the **objectType** in the UCMDB. It returns all the related Configuration Item IDs, relation types, and a topology map in XML format of the related CIs.

### **objectId**

The Configuration Item ID in the UCMDB.

### **objectType**

The Configuration Item Type (CIT) of the UCMDB. For example, you can specify an **objectType** of **nt** which is the class name for the CIT with the display name **Windows**. You can find the class name in the CI Type Manager by clicking the **Details** tab for the CI item. The **Name** field shows the class name that should be used for **objectType** input. **Note:** The class names can be different in UCMDB 7.0, 8.0, and 9.0.

## Get Object Attributes by Id

The **Get Object Attributes by Id** operation retrieves the attributes specified in **attributeList** for the Configuration Item (CI) based on the **objectId** and the **objectType** specified in the inputs in the UCMDB. It returns the CI attributes in the format of *<name=value>* list.

### **objectId**

The Configuration Item ID in the UCMDB.

### **objectType**

The Configuration Item Type of the UCMDB. For example, you can specify an **objectType** of **nt** which is the class name for the CIT with the display name **Windows**. You can find the class name in the CI Type Manager by clicking the **Details** tab for the CI item. The **Name** field shows the class name that should be used for **objectType** input. **Note:** The class names can be different in UCMDB 7.0, 8.0, and 9.0.

### **attributeList**

A comma-delimited list of attributes to retrieve in the UCMDB. For example, **attributeList** **host\_key,root\_lastaccesstime** contains the attributes for the Configuration Item Type **Windows** (or **nt** as class name) with display attribute names **Host Key** and **Last Access Time**. If you specify **none** for **attributeList**, no attributes are retrieved. If you leave **attributeList** blank, all of the attributes of that CIT are retrieved. You can find the attribute names in the CI Type Manager by clicking the **Attributes** tab for the CI item. The **Name** field shows the attribute name that should be used for **attributeList** input.

## Get Object List by Type

The **Get Object List by Type** operation retrieves all the Configuration Items in the UCMDB based on the **objectType** specified in the input. It returns a list of CI IDs for the given Configuration Item Type.

### **objectType**

The Configuration Item Type of the UCMDB. For example, you can specify an **objectType** of **nt** which is the class name for the CIT with the display name **Windows**. You can find the class name in the CI Type Manager by clicking the **Details** tab for the CI item. The **Name** field shows the class name that should be used for **objectType** input. **Note:** The class names can be different in UCMDB 7.0, 8.0, and 9.0.

## Get Query Name of View

The **Get Query Name of View** operation retrieves the query name in the UCMDB for the given **viewName**.

### **viewName**

The view name in the UCMDB. For example, **NetworkTopology** is one of the default views in the UCMDB.

## Get Topology Map by Query Name

The **Get Topology Map by Query Name** operation retrieves the Topology Map in XML format for the given query name in the UCMDB.

### queryName

The query name in the UCMDB. For example, **NetworkTopology** is one of the default queries in the UCMDB.

## Get Topology Map by View Name

The **Get Topology Map by View Name** operation retrieves the Topology Map in XML format for the given view name from the UCMDB.

### viewName

The view name in the UCMDB. For example, **NetworkTopology** is one of the default views in the UCMDB.

## Modify Object Attribute(s)

The **Modify Object Attribute(s)** operation modifies the attributes of the Configuration Item in the UCMDB based on the **objectId** and the **objectType** specified in the inputs.

### objectId

The Configuration Item ID in the UCMDB.

### objectType

The Configuration Item Type of the UCMDB. For example, you can specify an **objectType** of **nt** which is the class name for the Configuration Item Type with the display name **Windows**. You can find the class name in the CI Type Manager by clicking the **Details** tab for the CI item. The **Name** field shows the class name that should be used for **objectType** input. **Note:** The class names can be different in UCMDB 7.0, 8.0, and 9.0.

### prop

A property for the **objectType** to modify (*name=value*). The type of the property is determined automatically. You can add additional properties by creating extra **prop** inputs, each with a number appended to it, such as **prop1**. For example, if you integrate with UCMDB 7.0 or 8.0, **prop ip\_domain=battleground.ad** or **prop1 isvirtual=false**. If you integrate with UCMD 9.0 **prop routing\_domain=battleground.ad** or **prop1 isvirtual=false**. You can find the attribute names in the CI Type Manager by clicking the **Attributes** tab for the CI item. The **Name** field shows the attribute name that should be used for **prop** input.

## Get Topology Map by Query Name with Parameters

The **Get Topology Map by Query Name with Parameters** operation retrieves the Topology Map in XML format for the given query name with filtering parameters from the UCMDB. You must to set up the query with a parameterized value. For example, if want to restrict the query to list only **display\_label=10.22.0.0** for network node, during query creation in UCMDB, the Network Configuration Item Type in the query should have an attribute which has **Display Label** with parameterized value type.

## queryName

The query name in the UCMDB. For example, you can set up a query called **NetworkTopologyWithParameters** which allows filtering parameters in the UCMDB.

## parameterName

The parameter name to filter on the attributes of in the UCMDB.

## stringProp

A property to filter on (*name=value*). The type of the property is determined by the input with the type name in it. **stringProp** means that the property is a string. Other **prop** inputs are the same for their given type, such as **integerProp**, **integerListProp**, **bytesProp**, **booleanProp**, **string\_listProp**, **doubleProp**, **longProp**, **floatProp**, **dateProp**, or **xmlProp**. . For example, if you integrate with UCMDB 7.0 or 8.0, **stringProp ip\_domain=battleground.ad**. If you integrate with UCMDB 9.0, **stringProp routing\_domain=battleground.ad**.

## Validate IP in UCMDB

The **Validate IP in UCMDB** operation looks up the IP for **hostname** from DNS server. If it finds the IP, it checks if the Configuration Item (CI) with that IP exists in UCMDB. If the IP exists, it checks to see if the CI with **hostname** exists in UCMDB. If **hostname** exists it checks to see if the **host** CI is related to the **ip** CI. The operation returns the found host CI type, host CI ID, and ip CI ID.

## hostname

The fully-qualified domain name. For example, myserver.rose.hp.com.

## dnsServer

This is an optional input. Specifies the DNS server name or ip to look up the IP for the input **hostname**.

## cmdbHostTypeList

A list that includes UCMDB CI types that belong to **host** CI types if you integrate with UCMDB 7.0 and 8.0, or **node** CI types if you integrate with UCMDB 9.0. Start with the host or node type that is more specific. For example, **nt,unix**. If not specified, the following default list is used: nt,unix,vmware\_esx\_server, cluster\_resource\_group, clustered-service,terminalserver,vax,mainframe,lpar,host\_node,node,host. node and cluster\_resource\_group are the class names for UCMDB 9.0. We recommend that you not leave this input empty.

## Is Object Related To

The **Is Object Related To** operation checks to see if one Configuration Item (CI) ID is related to another CI ID in UDMCB. It returns **Success** if they are related. This flow is intended to be used as a subflow for the flow **Validate IP** in UCMDB.

## objectIdToRelate

The CI ID in UCMDB to check if it is related to the input **objectIdRelateTo**.

## objectIdRelateTo

The CI ID in UCMDB to check if the input **objectIdToRelate** has a relationship with this id. This CI ID has to be from CI in the relationship in order to get neighboring objects.

## objectTypeOfObjectIdRelateTo

The CI type in UCMDB for the input **objectIdRelateTo**. For example, you can specify an **objectType** of **nt** or **unix**, which is the class name for the CIT with the display name **Windows** or **Unix**.

## Get Object List by Host Name

The **Get Object List by Host Name** operation checks if the Configuration Item (CI) with **hostname** exists in UCMDB. If you integrate with UCMDB 7.0 or 8.0, it returns the IDs of the CIs in UCMDB with the attribute **host\_hostname**, **host\_key**, **host\_dnsname**, or **display\_label** that is equal to the input **hostname** and the CI type of the returned CIs. If you integrate with UCMDB 9.0, it returns the IDs of the CIs in UCMDB with **attribute name**, **primary\_dns\_name**, **host\_key**, or **display\_label** that is equal to the input **hostname** and the CI type of the returned CIs. The flow won't return all the CIs that have the same hostname but belong to different CI types. This flow is intended to be used as a subflow for the flow **Validate IP** in UCMDB.

### hostname

The host name to check in UCMDB. For example, myserver.rose.hp.com, or myserver.

### cmdbHostTypeList

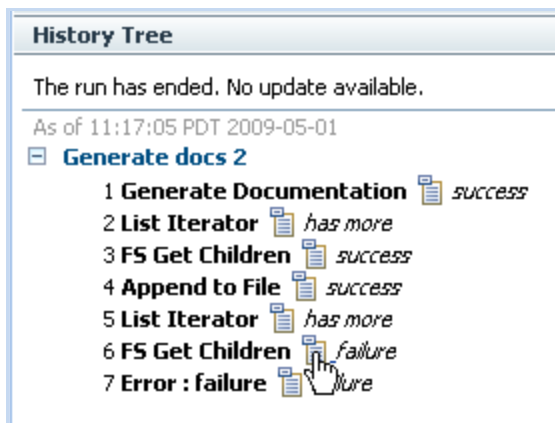
The list needed to include UCMDB CI types that belong to **host** CI types if you integrate with UCMDB 7.0 and 8.0, or **node** CI types if integrate with UCMDB 9.0. Start with the host or node type that is more specific. For example, nt,unix. If not specified, the following default list will be used: nt,unix,vmware\_esx\_server, cluster\_resource\_group, clustered\_service, terminal\_server, vax, mainframe, lpar, host\_node, node, host. node and cluster\_resource\_group are the class names for UCMDB 9.0. We recommended that you not leave this input empty.

# Troubleshooting

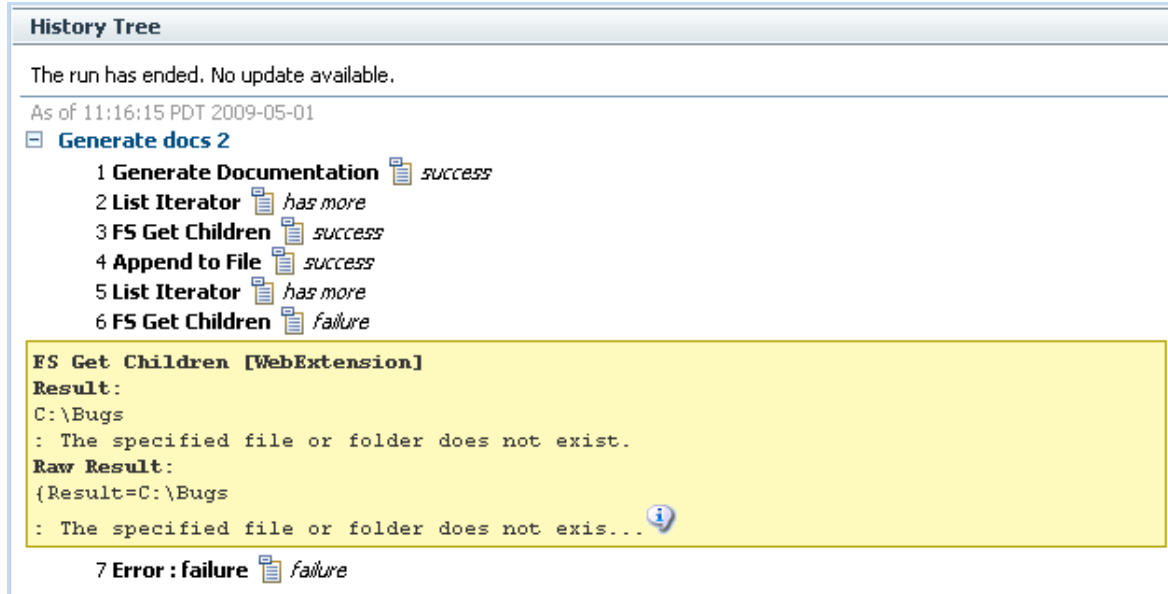
## General troubleshooting procedures and tools

### If a run of a flow in OO Central fails

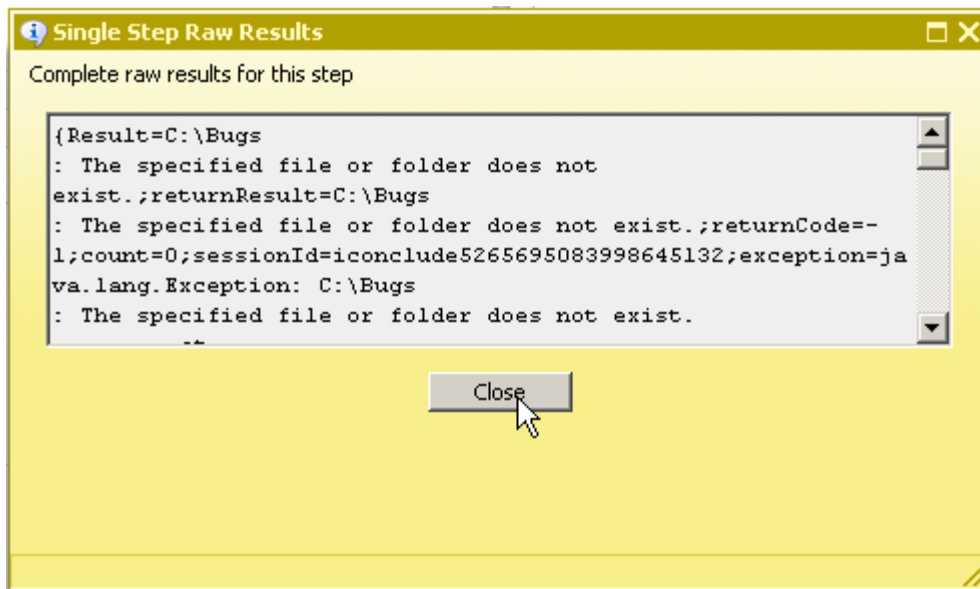
1. In Central, expand the **History Tree** of the flow execution and click the **expand details** (📄) icon for a failed step.



A yellow text box opens to show the execution result of the failed step.



2. Click the **more...** (i) icon to open the **Single Step Raw Results** window.



If you run a flow in OO Studio using **Debug Flow in Central**, you can use the Step Result Inspector to check the errors and exceptions in detail.

Similar information can also be found in the OO Central log %OO\_home%/Central/logs/Central\_wrapper.log. For information about the RAS service, check the log %OO\_home%/RAS/Java/Default/webapp/logs/wrapper.log.

## Error messages

### org.apache.axis2.AxisFault Transport error: 404 Error: Path+Not+Found

This message means that the logon information for UCMDDB 7.0 may be incorrect. Check the **cmdbHost** and **cmdbPort** inputs to make sure that they are correct.

**com.hp.ucmdb.api.CommunicationException: Got response code 404 for URL http://10.51.0.198:8080/ucmdb-api/connect?VERSION=8.0**

This means that the logon information for UCMDB 8.0 may be incorrect. Check the **cmdbHost** and **cmdbPort** inputs to make sure that they are correct.

**org.apache.axis2.AxisFault Transport error: 401 Error: Unauthorized**

This means that the logon information for UCMDB 7.0 may be incorrect. Check the **username** and **password** inputs to make sure that they are correct.

**Invalid credentials**

This means that the logon information for UCMDB 8.0 may be incorrect. Check the **username** and **password** to make sure that they are correct.

**No enum const class**

**com.hp.oo.content.connectors.hp.ucmdb.AbstractUCMDBConnector\$versions.v10**

The **cmdbVersion** string is incorrect. The valid strings are **7** and **8**.

**class [Windows] not found in CMDB Class Model; nested exception is:**

**java.lang.Exception:**

The **objectType** string is not defined in UCMDB 7.0. Make sure the type is defined as the **class\_name** in the **dbo.ccm\_classes** table of <CMDB Schema>. In the UCMDB GUI, the Configuration Item Type (CIT) shows the type's display name. For example, for the CIT display name **Windows**, the actual class name is **nt**.

**com.hp.ucmdb.api.classmodel.ClassDoesNotExistException: Class "Windows" is not defined in the uCMDB class model**

The **objectType** string is not defined in UCMDB 8.0. Make sure the type is defined as the **class\_name** in the **dbo.ccm\_classes** table of <CMDB Schema>. In the UCMDB GUI, the Configuration Item Type (CIT) shows the type's display name. For example, for the CIT display name **Windows**, the actual class name is **nt**.

**The received stringec928b8e1398f73b5011067b404088 representation is inconsistent; nested exception is: java.lang.Exception:**

The **objectId** doesn't exist in UCMDB 7.0. Make sure that the ID is valid.

**ID 5bf303466b8a982601dd3a9e88ad75 being restored has incorrect length (not 32 characters)**

The **objectId** entered does not exist in UCMDB 8.0. Make sure that the ID is valid.

**Object with ID: 5bf303466b8a982601dd3a9e88ad7557 was not found**

The **objectId** entered does not exist in UCMDB 8.0. Make sure that the ID is valid.

**Element Number: 1 doesn't exist in the result.; nested exception is: java.lang.Exception:**

When you executed the operation **Get Neighboring Objects**, the **objectId** was not correct in UCMDB 7.0. Make sure that the ID is valid.

**CMDB Operation Internal Error:... class name: Windows doesn't exist in class model**

When you executed the operation **Get Neighboring Objects**, the **objectId** was not correct in UCMDB 7.0. Make sure that the ID is valid.

**No Error Messages, but Got Empty Topology Map of Neighbors CIs.**

When running the OO operation **Get Neighboring Objects**, the **objectId** was not correct in UCMDB 8.0. Make sure that the ID is valid.

**Unable to determine the type of attribute: ip\_isManaged because it is not a member of the class: ip**

Make sure that you enter the **conditionAttributes** with valid attribute names. The attribute names can be found in the **attribute\_name** in the **dbo.ccm\_attributes** table of <CMDB Schema>.

**Unknown Comparison type: pp**

Make sure that you enter the **conditionOperators** with valid condition operators. Valid condition operators include ==, !=, <>, >, and <.

**java.lang.Exception: The specified condition type is not supported for: BooleanCondition, Supported Types are: EqualNotEqual**

Make sure that the **conditionOperators** match with **conditionAttributes** type. For example, **conditionAttributes ip\_ismanaged**, should have a **conditionOperator** of == or !=.

**The lists of conditional types, names, operators and values are not of equal length**

Make sure that the **conditionOperators**, **conditionAttributes**, and **conditionValues** are all the same length.

**Unable to locate view badViewName**

Make sure to enter a valid view name of the UCMDB in **viewName**.

**Pattern [badQueryName] doesn't exist**

Make sure to enter a valid query name of the UCMDB in **queryName**.

**No Error Messages, but Got Empty Topology Map**

If you get an empty topology map based on the **viewName** or **queryName**, the view or query might be empty in UCMDB.

**Error occurred while trying to execute operation Data In - Add Data Strict : operation Data In - Add Data Strict....Couldn't append existing object:**

When running the OO operation **Add Object** to create a Configuration Item, the Configuration Item is already in UCMDB 8.0. Make sure that the CI is not an existing CI.

**the ID property [attribute name='ip\_address'] doesn't exist !!!; nested exception is: java.lang.Exception:**

When running the OO operation **Add Object** to create a Configuration Item (CI) in UCMDB 7.0, the **prop** field should be the ID attribute. For example, if you create a type **ip** CI, the ID attribute is **ip\_address**; if you create a **host** CI, the ID attribute is **host\_key**.

**Error occurred while trying to execute operation Data In - Add Data Strict : operation Data In - Add Data Strict.... Can't achieve ID properties: not all the requested ID properties exist**

When running the OO operation **Add Object** to create a Configuration Item (CI) in UCMDB 8.0, the **prop** field should be the ID attribute. For example, if you create a type **ip** CI, the ID attribute is **ip\_address**; if you create a **host** CI, the ID attribute is **host\_key**.

**Error occurred while trying to execute operation Data In - Add Or Ignore Data : operation Data In - Add Or Ignore Data ... Caused by: java.lang.NullPointerException**

When running the OO operation **Add Relationship** to create a Relation in UCMDB 8.0, the relationship type might be not correct.

# Security

UCMDB 7.0 servers are accessed via SOAP over HTTP (or HTTPS, if enabled on the host). UCMDB 8.0 servers are accessed via JAVA Client API. The UCMDB administrator provides logon credentials for connecting with the SOAP or API. The SOAP client or API client needs the username and password of an integration user defined in the UCMDB. These users do not represent actual users of the UCMDB, but rather applications that connect to the UCMDB.

## Tools

### **JRSFlowInvoke.exe**

A command-line tool with which flows can be started from outside the OO Central Web application.

### **Web Service Wizard (wswizard.exe)**

A tool that displays a list of the methods in the interface of the specified Web service. In the wizard, you pick the methods that you want to use, and with one click for each method you have selected, the wizard creates an HP OO operation that can execute the method.

These tools are located in the %OO-home%\Studio\tools\ folder.