

# HP Operations Orchestration

for the Windows and Linux operating systems

Software Version: 9.00.06

---

## Amazon Virtual Private Cloud (VPC) Integration Guide

Document Release Date: October 2011

Software Release Date: October 2011



## Legal Notices

### Warranty

The only warranties for HP products and services are set forth in the express warranty statements accompanying such products and services. Nothing herein should be construed as constituting an additional warranty. HP shall not be liable for technical or editorial errors or omissions contained herein.

The information contained herein is subject to change without notice.

### Restricted Rights Legend

Confidential computer software. Valid license from HP required for possession, use or copying. Consistent with FAR 12.211 and 12.212, Commercial Computer Software, Computer Software Documentation, and Technical Data for Commercial Items are licensed to the U.S. Government under vendor's standard commercial license.

### Copyright Notices

© Copyright 2011 Hewlett-Packard Development Company, L.P.

### Trademark Notices

For information on open-source and third-party software acknowledgements, see *Open-Source and Third-Party Software Acknowledgements* (HPOO\_OpenSrc\_3rd-PartyAcks.pdf) in the documentation set for this release.

## Documentation Updates

The title page of this document contains the following identifying information:

- Software Version number, which indicates the software version.
- Document Release Date, which changes each time the document is updated.
- Software Release Date, which indicates the release date of this version of the software.

To check for recent updates or to verify that you are using the most recent edition of a document, go to:

**<http://h20230.www2.hp.com/selfsolve/manuals>**

This site requires that you register for an HP Passport and sign-in. To register for an HP Passport ID, go to:

**<http://h20229.www2.hp.com/passport-registration.html>**

Or click the **New users - please register** link on the HP Passport login page.

You will also receive updated or new editions if you subscribe to the appropriate product support service. Contact your HP sales representative for details.

## Support

Visit the HP Software Support Web site at:

**[www.hp.com/go/hpsoftwaresupport](http://www.hp.com/go/hpsoftwaresupport)**

This Web site provides contact information and details about the products, services, and support that HP Software offers.

HP Software online support provides customer self-solve capabilities. It provides a fast and efficient way to access interactive technical support tools needed to manage your business. As a valued support customer, you can benefit by using the support Web site to:

- Search for knowledge documents of interest
- Submit and track support cases and enhancement requests
- Download software patches
- Manage support contracts
- Look up HP support contacts
- Review information about available services
- Enter into discussions with other software customers
- Research and register for software training

Most of the support areas require that you register as an HP Passport user and sign in. Many also require a support contract. To register for an HP Passport ID, go to:

**<http://h20229.www2.hp.com/passport-registration.html>**

To find more information about access levels, go to:

**[http://h20230.www2.hp.com/new\\_access\\_levels.jsp](http://h20230.www2.hp.com/new_access_levels.jsp)**

# Contents

<b>1</b>	<b>Introduction .....</b>	<b>7</b>
	Purpose of the Amazon VPC Integration .....	8
	Supported Versions .....	8
	Downloading OO Releases and Documents on HP Live Network.....	8
<b>2</b>	<b>Getting Started with the Amazon VPC Integration .....</b>	<b>9</b>
	Installing and Configuring the Integration .....	10
	Amazon VPC — OO Integration Architecture.....	10
	Amazon VPC Use Cases .....	10
<b>3</b>	<b>Using the Amazon VPC – OO Integration.....</b>	<b>12</b>
	Location of Amazon VPC Integration Operations and Flows in OO Studio .....	13
	Common Inputs in the Integration.....	13
	Descriptions of Amazon VPC Integration Operations and Flows .....	14
	Customer Gateways .....	14
	Create Customer Gateway .....	14
	Delete Customer Gateway .....	15
	Describe Customer Gateways .....	16
	DHCP Options.....	17
	Associate Dhcp Options.....	17
	Create Dhcp Options .....	18
	Delete Dhcp Options.....	19
	Describe Dhcp Options .....	19
	Subnets .....	20
	Create Subnet .....	20
	Delete Subnet.....	21
	Describe Subnets .....	21
	Virtual Private Cloud.....	23
	Create VPC .....	23
	Delete VPC .....	24
	Describe VPCs.....	24
	VPN Connection .....	25
	Create VPN Connection .....	25
	Delete VPN Connection.....	26
	Describe VPN Connections .....	27
	VPN Gateways .....	28
	Attach VPN Gateway .....	28
	Create VPN Gateway .....	29
	Delete VPN Gateway.....	30
	Describe VPN Gateways .....	30
	Detach VPN Gateway.....	31
	VPC Dashboard .....	32

4	Troubleshooting.....	34
	Troubleshooting Overview .....	35
	General Troubleshooting Procedures and Tools .....	35
	Error Messages .....	35
5	Security.....	37
	About Amazon VPC Security .....	38
6	OO Tools .....	39
	OO Tools You Can Use with the Amazon VPC – OO Integration .....	40

# 1 Introduction

This section includes the following topics:

- [Purpose of the Amazon VPC Integration](#)
- [Supported Versions](#)
- [Downloading OO Releases and Documents on HP Live Network](#)

## Purpose of the Amazon VPC Integration

With this integration, you can build HP Operations Orchestration (OO) operations that are integrated into the Amazon Virtual Private Cloud (VPC).

VPC integrates with Amazon EC2. To use this integration successfully, you should have knowledge of the VPC and EC2 technology.

This document will explain how this integration has been implemented and how the operations included communicate between OO and VPC.

## Supported Versions

**Table 1 Supported Versions**

Operations Orchestration Version	Amazon VPC Version
9.00.06	VPC API Version 2010-08-31

## Downloading OO Releases and Documents on HP Live Network

HP Live Network provides an **Operations Orchestration Community** page where you can find and download supported releases of OO and associated documents.

To download OO releases and documents, visit the following site:

**<https://www2.hp.com/>**

This site requires that you register for an HP Passport and sign-in. To register for an HP Passport ID, go to:

**<http://h20229.www2.hp.com/passport-registration.html>**

Or click the **New users - please register** link on the HP Passport login page.

On the **HP Live Network** page, click **Operations Orchestration Community**.

**The Operations Orchestration Community** page contains links to announcements, discussions, downloads, documentation, help, and support.

## 2 Getting Started with the Amazon VPC Integration

This section includes the following topics:

- [Installing and Configuring the Integration](#)
- [Amazon VPC – OO Integration Architecture](#)
- [Amazon VPC Use Cases](#)

## Installing and Configuring the Integration

No special installation and configuration instructions are required for the Amazon Virtual Private Cloud integration. In order to use Amazon VPC, you must first subscribe to Amazon EC2 and Amazon VPC by going to <http://aws.amazon.com/vpc/>. Amazon has created specialized plugins for several browsers, such as Elasticfox for Firefox, that allow easy interaction with Amazon EC2 and Amazon VPC.

## Amazon VPC — OO Integration Architecture

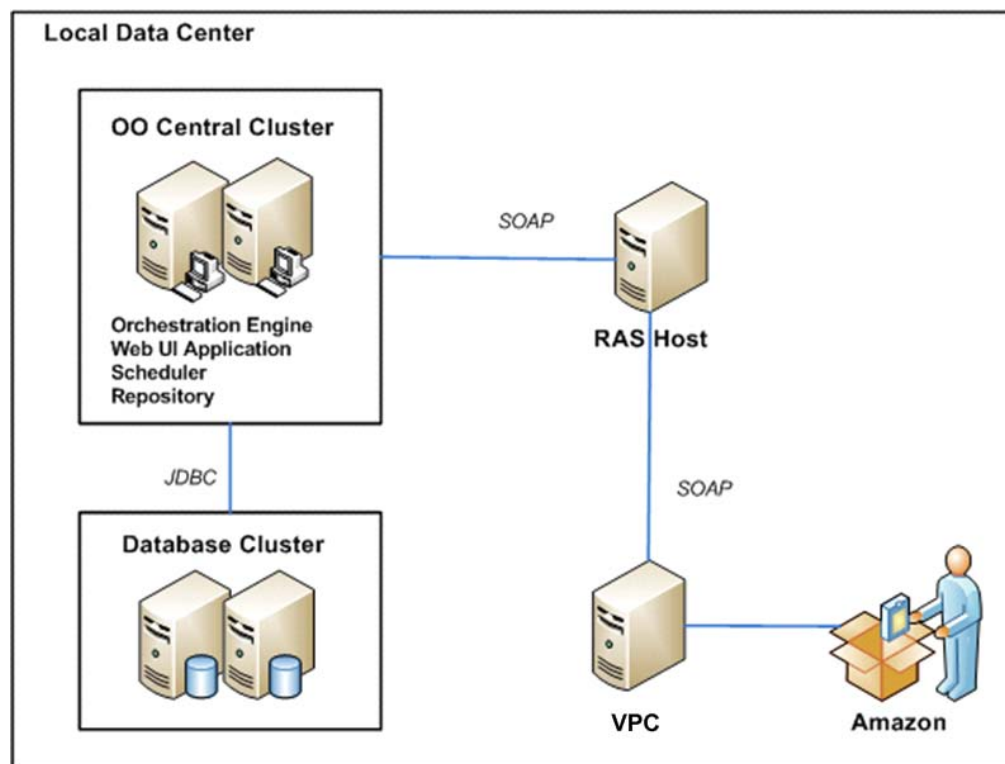


Figure 1 - Amazon VPC - OO Integration Architecture

## Amazon VPC Use Cases

The following are the major use cases for the Amazon VPC integration, and the operations that you can use to implement them.

- 1 Manage customer gateways:
  - Create Customer Gateway
  - Delete Customer Gateway

- Describe Customer Gateways
- 2 Manage DHCP options:
  - Associate Dhcp Options
  - Create Dhcp Options
  - Delete Dhcp Options
  - Describe Dhcp Options
- 3 Manage subnets:
  - Create Subnet
  - Delete Subnet
  - Describe Subnets
- 4 Manage virtual private clouds:
  - Create VPC
  - Delete VPC
  - Describe VPCs
- 5 Manage VPN connection:
  - Create VPN Connection
  - Delete VPN Connection
  - Describe VPN Connections
- 6 Manage VPN gateways:
  - Attach VPN Gateway
  - Create VPN Gateway
  - Delete VPN Gateway
  - Describe VPN Gateways
  - Detach VPN Gateway
- 7 Display the VPC dashboard information.

---

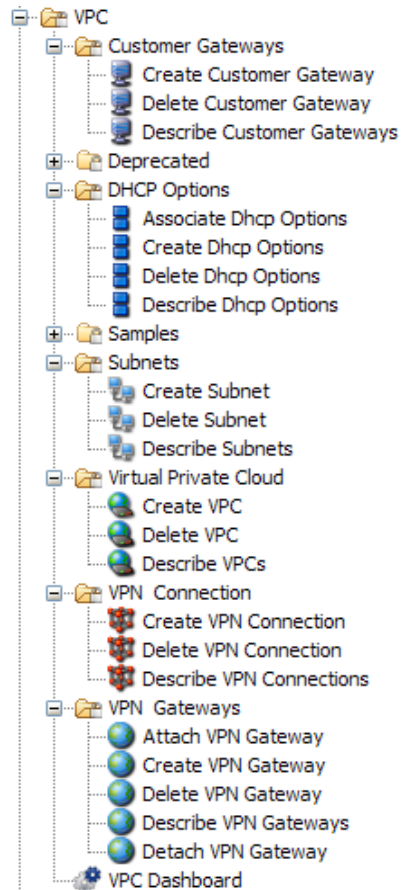
## 3 Using the Amazon VPC – OO Integration

This section includes the following topics:

- [Location of Amazon VPC Integration Operations and Flows in OO Studio](#)
- [Common Inputs in the Integration](#)
- [Descriptions of Amazon VPC Integration Operations and Flows](#)

# Location of Amazon VPC Integration Operations and Flows in OO Studio

The VPC integration includes the following operations and flows in the OO Studio Library/Integrations/Amazon/VPC/ folder.



**Figure 2 – Location of Amazon VPC Integration Operations and Flows**

## Common Inputs in the Integration

OO operations use inputs to specify how they obtain the data that they need and when the data is obtained. The following inputs are used consistently throughout the VPC integration's operations.

**accessKeyId**

The ID of the secret access key associated with your Amazon AWS account.

**accessKey**

The secret access key associated with your Amazon AWS account.

**proxyHost**

The proxy server used to connect to Amazon.

### proxyPort

The port used to connect to the proxy server. You must specify values for both the proxyHost and proxyPort inputs or leave both of them empty.

### proxyUsername

The username to use when connecting to the proxy if it requires authentication.

### proxyPassword

The password to use when connecting to the proxy if it requires authentication.

### serviceEndpoint

The endpoint to which the requests are sent. The default value is ec2.amazonaws.com which corresponds to the United States region. Another equivalent endpoint for the United States is ec2.us-east-1.amazonaws.com, while for Europe it is ec2.eu-west-1.amazonaws.com. These values may change in the future.

## Descriptions of Amazon VPC Integration Operations and Flows

This section describes the Amazon VPC integration's operations, including any operation-specific inputs. The operations are grouped by their basic functionality:

- Customer gateways
- DHCP options
- Subnets
- Virtual Private Cloud
- VPN connection
- VPN gateways
- VPC Dashboard

### Customer Gateways

#### Create Customer Gateway

The **Create Customer Gateway** operation provides information to AWS about your customer gateway device. The customer gateway is the device at your end of the VPN connection (the VPN gateway is the device at the AWS side of the VPN connection). AWS may delete a customer gateway that you create with this operation if you leave it inactive for an extended period of time (inactive means that there's no VPN connection in use with the customer gateway).

## Inputs

All of the operation's inputs except the following are described in *Common Inputs in the Integration*.

### type

The type of VPN connection that this customer gateway supports (for example, **ipsec.1**).

### ipAddress

The Internet-routable IP address for the customer gateway's outside interface. The address must be static and cannot be behind a device performing network address translation (NAT).

### bgpAsn

The customer gateway's Border Gateway Protocol (BGP) Autonomous System Number (ASN).

## Results

The operation returns the following results:

### requestId

The ID of the request you have sent to Amazon by using this operation.

### returnResult

The ID of the created customer gateway.

### state

The state of the customer gateway.

### type

The type of VPN connection supported by the gateway.

### ipAddress

The IP address for the gateway.

### bgpAsn

The gateway's Border Gateway Protocol (BGP) Autonomous System Number (ASN).



Like all Amazon VPC operations, the results might not be visible instantly.

## Delete Customer Gateway

The **Delete Customer Gateway** operation deletes a customer gateway. You must delete the VPN connection before deleting the customer gateway. AWS may delete a customer gateway if you leave it inactive for an extended period of time (inactive means that there's no VPN connection in use with the customer gateway).

## Inputs

All of the operation's inputs except the following are described in [Common Inputs in the Integration](#).

### `customerGatewayId`

The ID of the customer gateway you want to delete.

## Results

The operation returns the following results:

### `requestId`

The ID of the request you have sent to Amazon by using this operation.

### `returnResult`

The only valid value is **true**. If the deletion is not successful, an error message is returned and the operation fails.



Like all Amazon VPC operations, the results might not be visible instantly.

## Describe Customer Gateways

The **Describe Customer Gateways** operation provides you with information about your customer gateways.

## Inputs

All of the operation's inputs except the following are described in [Common Inputs in the Integration](#).

### `customerGatewayIds`

A list of the customer gateway IDs you want information about separated by delimiters. If you do not specify a value for this input, all of the customer gateways are described.

### `filterName1`

The first filter name for the operation. The valid values are **bgp-asn**, **customer-gateway-id**, **ip-address**, **state**, **type**, **tag-key**, **tag-value**, and **tag:<tag-name>** where **<tag-name>** stands for the name of a tag that a snapshot may have. See the notes below for an example of filtering the snapshot based on a specific tag/value combination.

### `filterValues1`

A first value/values list for the corresponding filter name.

### `filterName[number]`

To add additional filters, you must add extra inputs using the following naming convention: **filterName[number]** where you replace **[Number]** with increasing numbers (for example, **filterName2**, **filterName3**).

`filterValues[number]`

To add additional values, you must add extra inputs using the following naming convention: **filterValues[number]** where you replace **[Number]** with increasing numbers (for example, **filterValues2**, **filterValues3**).

`delimiter`

The delimiter for the list of customer gateway IDs. The default value is a comma (,).

`rowDelimiter`

The delimiter used between rows in the output table. The default value is the line separator character of the current operating system.

`colDelimiter`

The delimiter used between columns in the output table. The default value is a comma (,).

## Results

The operation returns the following results:

`requestId`

The ID of the request you have sent to Amazon by using this operation.

`returnResult`

A table containing the following columns: **Customer Gateway ID**, **State**, **Type**, **IP Address**, and **BGPASN** (Border Gateway Protocol Autonomous System Number). Each row in the table corresponds to a gateway.

## DHCP Options

### Associate Dhcp Options

The **Associate Dhcp Options** operation associates a set of previously created DHCP options or the default DHCP options with the specified VPC.

#### Inputs

All of the operation's inputs except the following are described in [Common Inputs in the Integration](#).

`dhcpOptionsId`

The ID of the DHCP options you want to associate with the VPC, or **default** for the default DHCP options.

`vpcId`

The ID of the VPC.

#### Results

The operation returns the following results:

`requestId`

The ID of the request you have sent to Amazon by using this operation.

`returnResult`

The only valid value is **true**. If the association is not successful, an error structure is returned.



- The default set of options consists of the standard EC2 host name, no domain name, no DNS server, no NTP server, and no NetBIOS server or node type.
- After you associate the options with the VPC, any existing instances and all new instances that you launch in that VPC use the options.
- Like all Amazon VPC operations, the results might not be visible instantly.

## Create Dhcp Options

The **Create Dhcp Options** operation creates a set of DHCP options that can be associated with one or more VPCs.

### Inputs

All of the operation's inputs except the following are described in *Common Inputs in the Integration*.

`dhcpConfigurationKey1`

The first name of a DHCP option.

`dhcpConfigurationValue1`

A first value or a list of values for the DHCP option.

`dhcpConfigurationKey[number]`

To include more DHCP option names, you must add extra inputs using the naming convention **dhcpConfigurationKey[number]** where **[number]** is the next sequential number (for example, **dhcpConfigurationKey2**, **dhcpConfigurationKey3**).

`dhcpConfigurationValue[number]`

To include more DHCP option values, you must add extra inputs using the naming convention **dhcpConfigurationValue[number]** where **[number]** is the next sequential number (for example, **dhcConfigurationValue2**, **dhcpConfigurationValue3**).

`delimiter`

The delimiter for the values list.

### Results

The operation returns the following results:

`requestId`

The ID of the request you have sent to Amazon by using this operation.

`returnResult`

The ID of the newly created DHCP option.



Like all Amazon VPC operations, the results might not be visible instantly.

## Delete Dhcp Options

The **Delete Dhcp Options** operation deletes a set of DHCP options.

### Inputs

All of the operation's inputs except the following are described in [Common Inputs in the Integration](#).

`dhcpOptionsId`

The ID of the DHCP options.

### Results

The operation returns the following results:

`requestId`

The ID of the request you have sent to Amazon by using this operation.

`returnResult`

The only valid value is true. If the association is not successful, an error structure is returned.



Like all Amazon VPC operations, the results might not be visible instantly.

## Describe Dhcp Options

The **Describe Dhcp Options** operation provides information about one or more sets of DHCP options.

### Inputs

All of the operation's inputs except the following are described in [Common Inputs in the Integration](#).

`dhcpOptionIds`

A DHCP option ID. You can specify more than one separating them with the value in the delimiter input.

`delimiter`

The delimiter for the list of IDs. The default value is a comma (,).

#### rowDelimiter

The delimiter used between rows in the output table. The default value is the line separator of the current operating system.

#### colDelimiter

The delimiter used between columns in the output table. The default value is a comma (,).

### Results

The operation returns the following results:

#### requestId

The ID of the request you have sent to Amazon by using this operation.

#### returnResult

An output table containing the IDs, keys, and values of the DHCP options.



Like all Amazon VPC operations, the results might not be visible instantly.

## Subnets

### Create Subnet

The **Create Subnet** operation creates a new subnet. An Amazon VPC subnet is a segment of a VPC's IP address range to which Amazon EC2 instances can be attached. Subnets allow you to group instances based on security and operational needs.

### Inputs

All of the operation's inputs except the following are described in [Common Inputs in the Integration](#).

#### vpcId

The ID of the VPC on which want to create the subnet.

#### cidrBlock

The CIDR block you want the subnet to cover. It must contain a slash followed by one or two digits (for example, **10.0.1.0/24**).

#### availabilityZone

The Availability Zone in which you want the subnet.

### Results

The operation returns the following results:

`requestId`

The ID of the request you have sent to Amazon by using this operation.

`returnResult`

The ID of the created subnet.

`state`

The current state of the subnet. The valid values are **pending** and **available**.

`availableIpAddressCount`

The number of unused IP addresses in the subnet (the IP addresses for any stopped instances are considered unavailable).

`availabilityZone`

The Availability Zone the subnet is in.



Like all Amazon VPC operations, the results might not be visible instantly.

## Delete Subnet

The **Delete Subnet** operation deletes a subnet from a VPC. You must terminate all running instances in the subnet before deleting it, otherwise Amazon VPC returns an error.

### Inputs

All of the operation's inputs except the following are described in *Common Inputs in the Integration*.

`subnetId`

The ID of the subnet.

### Results

The operation returns the following results:

`requestId`

The ID of the request you have sent to Amazon by using this operation.

`returnResult`

The only valid value is **true**. If the deletion is not successful, you receive an error structure.



Like all Amazon VPC operations, the results might not be visible instantly.

## Describe Subnets

The **Describe Subnets** operation provides information about the specified subnets.

## Inputs

All of the operation's inputs except the following are described in *Common Inputs in the Integration*.

### subnetIds

The list of subnets. If you leave this input blank, all of the subnets are described.

### filterName1

The first filter name for the operation. The valid values are **availability-zone**, **available-ip-address-count**, **cidr**, **state**, **subnet-id**, **vpc-id**, **tag-key**, **tag-value**, and **tag:<tag-name>** where **<tag-name>** stands for the name of a tag that a subnet may have. See the notes below for an example of filtering the subnets based on a specific tag/value combination.

### filterValues1

A first value/values list for the corresponding filter name.

### filterName[number]

To add additional filters, you must add extra inputs using the following naming convention: **filterName[number]** where you replace **[Number]** with increasing numbers (for example, **filterName2**, **filterName3**).

### filterValues[number]

To add additional values, you must add extra inputs using the following naming convention: **filterValues[number]** where you replace **[Number]** with increasing numbers (for example, **filterValues2**, **filterValues3**).

### delimiter

The delimiter for the list of subnet IDs or filter values. The default value is a comma (,).

### rowDelimiter

The delimiter used between rows in the output table. The default is the line separator of the current operating system.

### colDelimiter

The delimiter used between columns in the output table. The defaults is a comma (,).

## Results

The operation returns the following results:

### requestId

The ID of the request you have sent to Amazon by using this operation.

#### returnResult

A table containing the following columns: the subnet's ID, the Availability Zone the subnet is in, the current state of the subnet (pending or available), the number of unused IP addresses in the subnet, the CIDR block assigned to the subnet, and the ID of the VPC the subnet is in. Each row in the table corresponds to a subnet. If a column is empty, 'null' is returned. If one of the **accessKeyId** or **accessKey** input values is invalid, the result is "400 Bad Request" and the operation fails.



- Like all Amazon VPC operations, the results might not be visible instantly.
- To list the resources assigned tag Purpose=X or Purpose=Y, specify:

filterName1=tag:Purpose

filterValues1=X,Y

- More details on the filters that can be applied on this operation can be found in the DescribeSnapshots section at <http://docs.amazonwebservices.com/AWSEC2/latest/APIReference/>.

## Virtual Private Cloud

### Create VPC

The Create VPC operation creates an Amazon virtual private cloud.

#### Inputs

All of the operation's inputs except the following are described in [Common Inputs in the Integration](#).

#### CIDR

A valid Classless Inter-Domain Routing (CIDR) block. It must contain a slash followed by one or two digits (for example, **10.0.0.0/28**). The smallest VPC you can create uses a /28 netmask (16 IP addresses), and the largest uses a /16 netmask (65,536) IP addresses.

#### delimiter

The delimiter that separates the fields that describe a VPC in the result string. The default value is a comma (,).

#### Results

The operation returns the following results:

#### requestId

The ID of the request you have sent to Amazon by using this operation.

#### returnResult

The Amazon VPC in a table having the following columns: VPC Id, status, CIDR block, and DHCP options. The column fields are separated by the delimiter. If you have no VPCs, an empty string is returned.



- Like all Amazon VPC operations, the results might not be visible instantly.

## Delete VPC

The **Delete VPC** operation deletes an Amazon virtual private cloud.

### Inputs

All of the operation's inputs except the following are described in [Common Inputs in the Integration](#).

#### `vpcId`

A valid ID of an existing VPC.

### Results

The operation returns the following results:

#### `requestId`

The ID of the request you have sent to Amazon by using this operation.

#### `returnResult`

A boolean value of true if the deletion succeeded.



Like all Amazon VPC operations, the results might not be visible instantly.

## Describe VPCs

The **Describe VPCs** operation returns a list of your Amazon virtual private clouds (VPC).

### Inputs

All of the operation's inputs except the following are described in [Common Inputs in the Integration](#).

#### `vpcIds`

A list of the VPC identifiers to describe. If you leave the list empty, all of the VPCs are described. If you specify a list of VPC identifiers, the VPCs are returned in the order of the IDs in the list.

#### `filterName1`

The first filter name for the operation. The valid values are **cidr**, **dhcp-options-id**, **state**, **vpc-id**, **tag-key**, **tag-value**, and **tag:<tag-name>** where **<tag-name>** stands for the name of a tag that a VPC may have. See the notes below for an example of filtering the VPCs based on a specific tag/value combination.

#### `filterValues1`

A first value/values list for the corresponding filter name.

`filterName[number]`

To add additional filters, you must add extra inputs using the following naming convention: **filterName[number]** where you replace **[Number]** with increasing numbers (for example, **filterName2**, **filterName3**).

`filterValues[number]`

To add additional values, you must add extra inputs using the following naming convention: **filterValues[number]** where you replace **[Number]** with increasing numbers (for example, **filterValues2**, **filterValues3**).

`delimiter`

The delimiter used for the list of VPCs and filter values. The default value is a comma (,).

`rowDelimiter`

The delimiter that separates VPC descriptions in the output string. The default value is the line separator for the current operating system.

`colDelimiter`

The delimiter that separates the fields that describe a VPC in the result string. The default value is a semicolon (;).

## Results

The operation returns the following results:

`requestId`

The ID of the request you have sent to Amazon by using this operation.

`returnResult`

The EC2 VPCs in a table with the following columns: VPC Id, status, CIDR block, and DHCP options. Column fields are separated by the **colDelimiter**. If you have no VPCs, an empty string is returned.



- Like all Amazon VPC operations, the results might not be visible instantly.
- To list the resources assigned tag Purpose=X or Purpose=Y, specify:

`filterName1=tag:Purpose`

`filterValues1=X,Y`

- More details on the filters that can be applied on this operation can be found in the DescribeSnapshots section at <http://docs.amazonwebservices.com/AWSEC2/latest/APIReference/>.

## VPN Connection

### Create VPN Connection

The **Create VPN Connection** operation creates a new VPN connection between an existing VPN gateway and a customer gateway.

## Inputs

All of the operation's inputs except the following are described in [Common Inputs in the Integration](#).

### type

The type of VPN connection.

### customerGatewayId

The ID of the customer gateway.

### vpnGatewayId

The ID of the VPN gateway.

## Results

The operation returns the following results:

### requestId

The ID of the request you have sent to Amazon by using this operation.

### returnResult

The ID of the created VPN connection.

### customerGatewayConfiguration

The customer gateway configuration.



Like all Amazon VPC operations, the results might not be visible instantly.

## Delete VPN Connection

The **Delete VPN Connection** operation deletes a VPN connection.

## Inputs

All of the operation's inputs except the following are described in [Common Inputs in the Integration](#).

### vpnConnectionId

The ID of the VPN connection to delete.

## Results

The operation returns the following results:

### requestId

The ID of the request you have sent to Amazon by using this operation.

`returnResult`

The valid value is true. If the deletion fails, an error message is returned.



Like all Amazon VPC operations, the results might not be visible instantly.

## Describe VPN Connections

The **Describe VPN Connections** operation provides information about VPN connections.

### Inputs

All of the operation's inputs except the following are described in *Common Inputs in the Integration*.

`vpnConnectionIds`

A list of VPN connection IDs, separated by the delimiter defined in the delimiter input. If you leave this input blank, all VPN connections are described.

`filterName1`

The first filter name for the operation. The valid values are **customer-gateway-configuration**, **customer-gateway-id**, **state**, **type**, **vpn-connection-id**, **vpn-gateway-id**, **tag-key**, **tag-value**, and **tag:<tag-name>** where **<tag-name>** stands for the name of a tag that a VPN connection may have. See the notes below for an example of filtering the VPN connection based on a specific tag/value combination.

`filterValues1`

A first value/values list for the corresponding filter name.

`filterName[number]`

To add additional filters, you must add extra inputs using the following naming convention: **filterName[number]** where you replace [Number] with increasing numbers (for example, **filterName2**, **filterName3**).

`filterValues[number]`

To add additional values, you must add extra inputs using the following naming convention: **filterValues[number]** where you replace [Number] with increasing numbers (for example, **filterValues2**, **filterValues3**).

`delimiter`

The delimiter for the list of VPN connection IDs or filter values. The default value is a comma (,).

`rowDelimiter`

The delimiter used between rows in the output table. The default value is the line separator of the current operating system.

`colDelimiter`

The delimiter used between columns in the output table. The default value is a comma (,).

## Results

The operation returns the following results:

### `requestId`

The ID of the request you have sent to Amazon by using this operation.

### `returnResult`

A description containing the VPN connection ID, VPN gateway ID, customer gateway ID, and customer gateway configuration.



- Like all Amazon VPC operations, the results might not be visible instantly.
- To list the resources assigned tag Purpose=X or Purpose=Y, specify:  
`filterName1=tag:Purpose`  
`filterValues1=X,Y`
- More details on the filters that can be applied on this operation can be found in the **DescribeSnapshots** section at <http://docs.amazonwebservices.com/AWSEC2/latest/APIReference/>.

## VPN Gateways

### Attach VPN Gateway

The **Attach VPN Gateway** operation attaches a VPN gateway to a VPC.

### Inputs

All of the operation's inputs except the following are described in *Common Inputs in the Integration*.

### `vpnGatewayId`

The ID of the gateway you want to attach to the VPC.

### `vpcId`

The ID of the VPC to be attached to the VPN gateway.

## Results

The operation returns the following results:

### `requestId`

The ID of the request you have sent to Amazon by using this operation.

### `returnResult`

A message containing the result of the operation.

`state`

The state of the VPN gateway.

`vpcId`

The VPC attached to the VPN gateway.



Like all Amazon VPC operations, the results might not be visible instantly.

## Create VPN Gateway

The **Create VPN Gateway** operation creates a new VPN gateway. A VPN gateway is the VPC-side endpoint for the VPN connection. You can create a VPN gateway before creating the VPC itself. AWS might delete any VPN gateway created with this operation if it is left inactive for an extended period of time (inactive means that there is no VPN connection in use with the VPN gateway).

### Inputs

All of the operation's inputs except the following are described in [Common Inputs in the Integration](#).

`type`

The type of VPN connection this VPN gateway supports (for example, **ipsec.1**).

`availabilityZone`

The availability zone where you want the VPN gateway.

### Results

The operation returns the following results:

`requestId`

The ID of the request you have sent to Amazon by using this operation.

`returnResult`

The ID of the created VPN gateway.

`state`

The state of the operation.

`type`

The type of VPN connection.



Like all Amazon VPC operations, the results might not be visible instantly.

## Delete VPN Gateway

The **Delete VPN Gateway** operation deletes a VPN gateway. Before you delete a VPN gateway, it is a best practice to detach it from the VPC and delete the VPN connection.

### Inputs

All of the operation's inputs except the following are described in [Common Inputs in the Integration](#).

#### `vpnGatewayId`

The ID of the VPN gateway.

### Results

The operation returns the following results:

#### `requestId`

The ID of the request you have sent to Amazon by using this operation.

#### `returnResult`

The valid value is **true**. If the deletion fails, an error structure is displayed instead.



Like all Amazon VPC operations, the results might not be visible instantly.

## Describe VPN Gateways

The **Describe VPN Gateways** operation provides information about the VPN gateways.

### Inputs

All of the operation's inputs except the following are described in [Common Inputs in the Integration](#).

#### `vpnGatewayIds`

The list of VPN gateways. If you leave this input blank, all VPN gateways are described.

#### `filterName1`

The first filter name for the operation. The valid values are **attachment.state**, **attachment.vpc-id**, **availability-zone**, **state**, **type**, **vpn-gateway-id**, **tag-key**, **tag-value**, and **tag:<tag-name>** where **<tag-name>** stands for the name of a tag that a VPN gateway may have. See the notes below for an example of filtering the VPN gateway based on a specific tag/value combination.

#### `filterValues1`

A first value/values list for the corresponding filter name.

#### filterName[number]

To add additional filters, you must add extra inputs using the following naming convention: **filterName[number]** where you replace **[Number]** with increasing numbers (for example, **filterName2**, **filterName3**).

#### filterValues[number]

To add additional values, you must add extra inputs using the following naming convention: **filterValues[number]** where you replace **[Number]** with increasing numbers (for example, **filterValues2**, **filterValues3**).

#### delimiter

The delimiter for the list of VPN gateway IDs and filter values. The default value is a comma (,).

#### rowDelimiter

The delimiter used between rows in the output table. The default value is the line separator of the current operating system.

#### colDelimiter

The delimiter used between columns in the output table. The default value is a comma (,).

## Results

The operation returns the following results:

#### requestId

The ID of the request you have sent to Amazon by using this operation.

#### returnResult

The description of the required VPN gateways including the following information: the VPN gateway ID, type, state, availability zone, and VPC ID.



- Like all Amazon VPC operations, the results might not be visible instantly.
- To list the resources assigned tag Purpose=X or Purpose=Y, specify:.

filterName1=tag:Purpose

filterValues1=X,Y

- More details on the filters that can be applied on this operation can be found in the DescribeSnapshots section at <http://docs.amazonwebservices.com/AWSEC2/latest/APIReference/>.

## Detach VPN Gateway

The **Detach VPN Gateway** operation detaches a VPN gateway from a VPC.

### Inputs

All of the operation's inputs except the following are described in [Common Inputs in the Integration](#).

`vpnGatewayId`

The ID of the gateway you want to detach from the VPC.

`vpcId`

The ID of the VPC from which you want to detach the VPN gateway.

## Results

The operation returns the following results:

`requestId`

The ID of the request you have sent to Amazon by using this operation.

`returnResult`

The valid value is **true**. If the detachment fails, an error structure is displayed instead.



Like all Amazon VPC operations, the results might not be visible instantly.

## VPC Dashboard

The **VPC Dashboard** flow displays the VPC dashboard information which specifies whether or not you have each of the following resources available:

- VPC
- Subnet
- Customer Gateway
- VPN Gateway
- VPN Connection

## Inputs

All of the operation's inputs except the following are described in [Common Inputs in the Integration](#).

`notifyMethod`

The method of notification. The valid values are **Write to File**, **Email**, **Display**, and **None**.

The following describes the steps in the flow in the order of their execution:

- 1 **Describe VPCs** – Returns a list of your Amazon virtual private clouds (VPCs).
- 2 **Describe Subnets** – Returns a table containing the information about your subnets.
- 3 **Describe Customer Gateways** – Returns a table containing the information about your customer gateways.
- 4 **Describe VPN Gateways** – Returns a table containing the information about your VPN gateways.

- 5 **Describe VPN Connections** – Returns a table containing the information about your VPN connections.
- 6 **Set Dashboard Values** – Lets you set the actual dashboard values to be displayed, sent through e-mail, or written to a file depending on the method you select in the **Notify** step. The previous steps retrieved information about the VPC state and placed that information into variables. This step uses a scriplet to parse those variables and sets the corresponding message: "Available" or "Not Available".
- 7 **Notify** – Allows you to select how users receive a message that notifies them of the outcome of the flow.

---

## 4 Troubleshooting

This section includes the following topics:

- [Troubleshooting Overview](#)
- [General Troubleshooting Procedures and Tools](#)
- [Error Messages](#)

# Troubleshooting Overview

This section provides troubleshooting procedures and tools you can use to solve problems you may encounter while using this integration. It also includes a list of the error messages you may receive while using the integration and offers descriptions and possible fixes for the errors.

## General Troubleshooting Procedures and Tools

When troubleshooting issues related to the VPC integration, there are several steps that you should verify:

- 1 Verify that the same operation works when it is performed through the VPC console using the same parameters.
- 2 Verify that your access key and proxy parameters are correct.

## Error Messages

This section lists the error messages you may receive while using this integration.

**Failed to open HTTP connection.**

**AWS was not able to validate the provided access credentials. Error code: AuthFailure.**

**The request signature we calculated does not match the signature you provided. Check your AWS Secret Access Key and signing method. Consult the service documentation for details. Error code: SignatureDoesNotMatch.**

**Invalid integer value ###. Error code: InvalidParameterValue.**

**Value (###) for parameter bgpAsn is invalid. Invalid Format. Error code: InvalidParameterValue.**

**The following input must not be null: bgpAsn.**

**Value (###) for parameter ipAddress is invalid. Invalid Format. Error code: InvalidParameterValue.**

**The request must contain the parameter ipAddress. Error code: MissingParameter.**

**Value (###) for parameter type is invalid. Invalid Format. Error code: InvalidParameterValue.**

**The following input must not be null: type.**

**The customerGateway ID '###' does not exist. Error code: InvalidCustomerGatewayID.NotFound.**

**### is not a valid Key name. This message appears if the filterName is invalid.**

**The following input must not be null: customerGatewayId**

**The vpc ID '###' does not exist. Error code: InvalidVpcID.NotFound.**

**The name of the Key (DHCP option) with number 1 is not valid.**

The dhcpOption ID '###' does not exist. Error code:  
InvalidDhcpOptionID.NotFound.

Value (###) for parameter availabilityZone is invalid. Subnets can currently only be created in the following availability zones: eu-west-1b. Error code:  
InvalidParameterValue.

The subnet ID '###' does not exist. Error code: InvalidSubnetID.NotFound.

Invalid mask for the CIDR! This should be an integer between 16 and 28.

Invalid CIDR!

The provided IP is invalid!

The vpnGateway ID '###' does not exist. Error code:  
InvalidVpnGatewayID.NotFound.

The attachment with vpn gateway ID '###' and vpc ID '###' does not exist. Error code: InvalidVpnGatewayAttachment.NotFound.

---

## 5 Security

This section includes the following topics:

- [About Amazon VPC Security](#)

## About Amazon VPC Security

This section describes how security is handled by the Amazon VPC integration.

The VPC integration uses the Amazon VPC Query API. To perform its task, each VPC operation sends a query to Amazon. This query is sent over HTTPS and the Symphony Client library is used for sending the actual requests. Every VPC operation has two inputs: **accessKey** and **accessKeyId**. These are provided by Amazon for every Amazon account.

According to Amazon, in addition to the name of the action and the list of parameters, you must include a signature in every Query request. The signature is created by using the **accessKey** provided by the user. The steps for creating a signature are described on the Amazon Web site at <http://docs.amazonwebservices.com/AmazonVPC/2009-07-15/DeveloperGuide/index.html?using-query-api.html> and are implemented by the operations.

The VPC integration uses version 2 of the signature. For calculating an RFC 2104-compliant HMAC with the query string created by using the input parameters, the integration use the secret Access Key as the key, and SHA1 as the hash algorithm. You should not perform any special configurations; just provide the **accessKey** and **accessKeyId**.

---

## 6 OO Tools

This section includes the following topic:

- [OO Tools You Can Use with the Amazon VPC - OO Integration](#)

# OO Tools You Can Use with the Amazon VPC – OO Integration

Following are OO tools that you can use with the Amazon VPC integration:

- **RSFlowInvoke.exe and JRSFlowInvoke.jar**

RSFlowInvoke (RSFlowInvoke.exe or the Java version, JRSFlowInvoke.jar) is a command-line utility that allows you to start a flow without using Central (although the Central service must be running). RSFlowInvoke is useful when you want to start a flow from an external system, such as a monitoring application that can use a command line to start a flow.

- **Web Services Wizard (wswizard.exe)**

When you run the Web Services Wizard, you provide it with the WSDL for a given Web service. The WSDL string you provide as a pointer can be a file's location and name or a URL. The Web Services Wizard displays a list of the methods in the API of the Web service that you specify. When you run the wizard, pick the methods you want to use, and with one click for each method you have selected, the wizard creates an HP OO operation that can execute the method. This allows you to use the Web Services Wizard to create operations from your monitoring tool's API.

These tools are available in the Operations Orchestration home folder in /Studio/tools/.