

HP Operations Manager SiteScope Administration Integration

for the Windows® Operating System

Software Version: 1.00

Installation Guide

Document Release Date: November 2008

Software Release Date: November 2008



Legal Notices

Warranty

The only warranties for HP products and services are set forth in the express warranty statements accompanying such products and services. Nothing herein should be construed as constituting an additional warranty. HP shall not be liable for technical or editorial errors or omissions contained herein.

The information contained herein is subject to change without notice.

Restricted Rights Legend

Confidential computer software. Valid license from HP required for possession, use or copying. Consistent with FAR 12.211 and 12.212, Commercial Computer Software, Computer Software Documentation, and Technical Data for Commercial Items are licensed to the U.S. Government under vendor's standard commercial license.

Copyright Notices

© Copyright 2008 Hewlett-Packard Development Company, L.P.

Trademark Notices

Adobe® and Adobe® Flash® Player are trademarks of Adobe Systems Incorporated.

Java™ and all Java based trademarks and logos are trademarks or registered trademarks of Sun Microsystems, Inc. in the U.S. and other countries.

Microsoft®, MS-DOS®, Windows®, Windows NT®, and Windows® XP are U.S. registered trademarks of Microsoft Corporation.

Open Source Notices

This software uses Perl module TreePP.pm, Copyright © 2006 Yusuke Kawasaki. All rights reserved. This program is free software; you can redistribute it and/or modify it under the same terms as Perl itself.

<http://search.cpan.org/~kawasaki/XML-TreePP-0.19/lib/XML/TreePP.pm>

Audience

This guide is intended for software installers and administrators of HP Operations Manager and SiteScope environments.

Documentation Updates

This guide's title page contains the following identifying information:

- Software Version number, which indicates the software version.
- Document Release Date, which changes each time the document is updated.

To check for recent updates, or to verify that you are using the most recent edition of a document, go to:

<http://h20230.www2.hp.com/selfsolve/manuals>

This site requires that you register for an HP Passport and sign-in. To register for an HP Passport ID, go to:

<http://h20229.www2.hp.com/passport-registration.html>

Or click the **New users - please register** link on the HP Passport login page.

You will also receive updated or new editions if you subscribe to the appropriate product support service. Contact your HP sales representative for details.

Support

You can visit the HP Software Support web site at:

<http://www.hp.com/go/hpsoftwaresupport>

This web site provides contact information and details about the products, services, and support that HP Software offers.

HP Software Support Online provides customer self-solve capabilities. It provides a fast and efficient way to access interactive technical support tools needed to manage your business. As a valued support customer, you can benefit by using the HP Software Support web site to:

- Search for knowledge documents of interest
- Submit and track support cases and enhancement requests
- Download software patches
- Manage support contracts
- Look up HP support contacts
- Review information about available services
- Enter into discussions with other software customers
- Research and register for software training

Most of the support areas require that you register as an HP Passport user and sign in. Many also require a support contract.

To find more information about access levels, go to:

http://h20230.www2.hp.com/new_access_levels.jsp

To register for an HP Passport ID, go to:

<http://h20229.www2.hp.com/passport-registration.html>

1	HPOM SiteScope Administration Integration Overview	7
	Supported Versions	7
	Included Software	8
	HPOM SA Integration	8
	Profiles	9
2	Installing the Software	11
	Installation on Clusters	11
	Installation Prerequisites for Management Servers	11
	Applications Stopped During Installation	12
	Installing on HPOM Management Servers	12
	After Installation	17
	Importing and Exporting Certificates	17
	Before Assigning to Operators	19
	Repairing an Installation	20
	Uninstalling from Management Servers	20
	Setting Up Secure HTTPS Communication	22

1 HPOM SiteScope Administration Integration Overview

This document describes prerequisites and installation steps for the HP Operations Manager SiteScope Administration Integration (HPOM SA).

Supported Versions

The information in this guide applies to the following product versions:

- HPOM for Windows version 8.10

For information about required patches, see [Installation Prerequisites for Management Servers](#) on page 11.

- SiteScope 9.50

For up-to-date information on the latest supported platforms and versions, see the support matrices at the following location:

<http://support.openview.hp.com/selfsolve/document/KM323488>

Included Software

The HPOM SA software comes as a downloadable integration package for HP Operations Manager (HPOM) for Windows.

The HPOM SiteScope Administration Integration package contains the following software:

- HPOM SiteScope Sam Admin Adapter
 - Contains the HPOM System Availability Management Administration (SAM Admin) software for managing SiteScope instances from within the HPOM console.
- Other infrastructure components:
 - HP Software JRE Package Version
 - HP TomcatB Servlet Container Version

These software components are an integral part of the HPOM for Windows product, and so would normally not be required. If for any reason the installer program detects that they are not present, (for example they had been deleted), the installer program automatically installs them.

HPOM SA Integration

HPOM SA adds HP System Availability Management (SAM Admin) application to HPOM. The SAM Admin application enables you to configure and manage multiple SiteScope instances using SAM Admin from within HPOM.



For a brief overview of the SAM Admin functionality that SiteScope Administration Integration provides you with, see the *HPOM Online Help*.

For details about SAM Admin tools and functionality, see the *HP SiteScope Help*, which covers both SiteScope and SAM Admin functionality. For details about how to access the *HP SiteScope Help*, see the *HPOM Online Help*.

The HPOM SiteScope Adapter provides visibility of SiteScope servers and monitors to HPOM. The SiteScope Adapter is initially installed on the HPOM management server, and subsequently deployed to HPOM managed nodes that are also SiteScope servers. HPOM SiteScope Adapter provides SiteScope tool capability from the HPOM server system, and provides for alert messages based on SiteScope monitor status to be sent to the HPOM message browser.

For details about the SiteScope Adapter, see the *HPOM Online Help*.

Profiles

Each SiteScope instance has a profile. All SiteScope profiles are saved automatically to a file. A profile for a newly added SiteScope instance is appended automatically to the profiles file. Similarly, when a SiteScope instance is deleted, its profile is automatically removed from the profiles file.

2 Installing the Software

The application installer for the HPOM SA integration package installs the software, described in [Chapter 1, HPOM SiteScope Administration Integration Overview](#), onto the HPOM host system. This chapter guides you through all the required steps. This process should take approximately 20 minutes to complete.

Installation on Clusters



You must install HPOM SA on each cluster node where HPOM is installed. Otherwise, if you install HPOM SA on a non-active cluster node you will get a warning message `SERVER Aborted`. This is because the process `ovcs` is not able to run on a non-active cluster node.

Installation Prerequisites for Management Servers

Prerequisites for installing HPOM SA on HPOM management servers are listed in this section.

- Make sure that HPOM 8.10 for Windows is installed on the HPOM management server, with the following minimum patch level:

OMW_00016

See the support matrix at HP Software Support Online for details of the latest patches for your software version at the following location:

<http://h20230.www2.hp.com/selfsolve/patches>

- Make sure that Adobe Flash Player is installed, which is used to display some icons in the SAM Admin summary window. You can download the latest version of the Adobe Flash Player from the following location:

<http://get.adobe.com/flashplayer/>

Applications Stopped During Installation

The following applications are stopped and restarted by the application installation process. The restarts are performed for install, uninstall and repair.

- Local HPOM agent
- HPOM for Windows server processes
- All `ovc` applications

Installing on HPOM Management Servers

To install the software on the HPOM management server, follow these steps:

- 1 Go to the following location:

<ftp://ovweb.external.hp.com/pub/cpe/ito/OM-Installation>

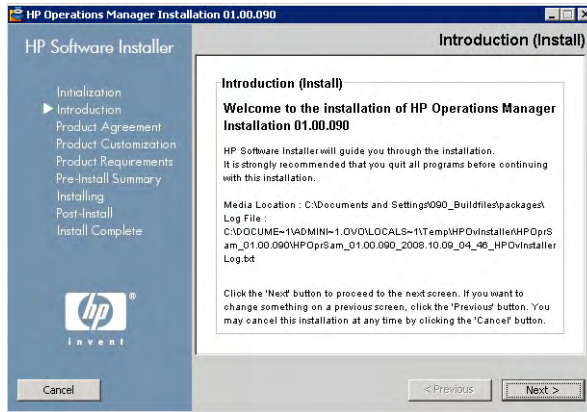
- 2 Download the installation package:

`ProductImage-HP0prSam-<version>-WinNT4.0-release.zip`

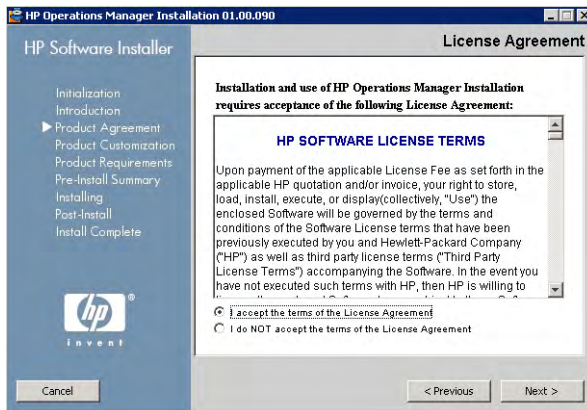
- 3 Navigate to the temporary folder that contains the zip file for the installation package you downloaded.
- 4 Extract the contents of the zip file.
- 5 To start the installation process for the package, double-click on the following .exe file:

`HP0prSam_<version>_setup.exe`

The application installer opens. Follow the on-screen instructions and proceed through the installation process using the **Next** and **Done** buttons. On the left hand side of the installation window, an arrow indicates the progress of the installation.

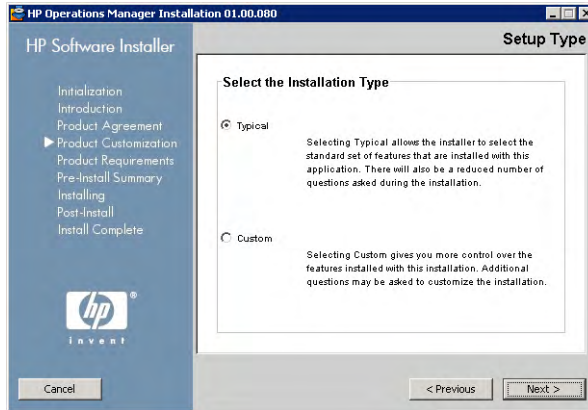


6 Read and accept the Licence agreement and click **Next**.



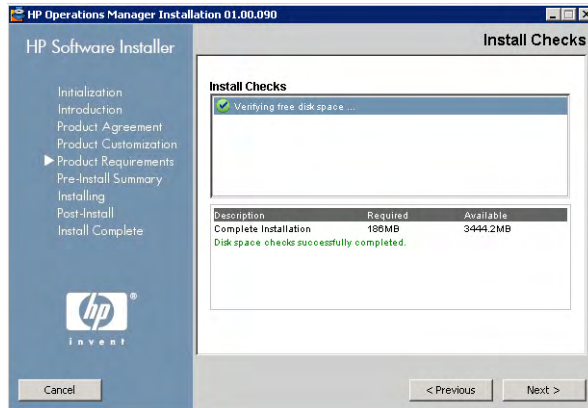
7 Select the installation type **Typical**.

8 Select **Next**.



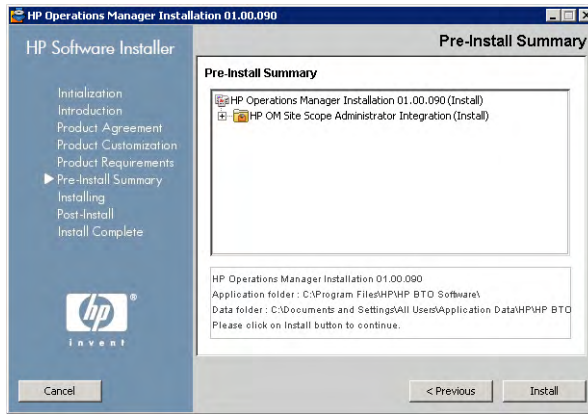
The pre-install checks, such as verifying the available free disk space, are executed.

- 9 If they complete successfully, click **Next**.



The pre-install summary lists the components to be installed.

10 Click **Install**.



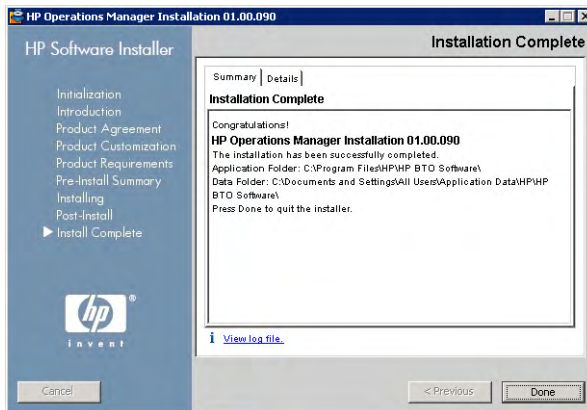
The software installer starts installing files onto the host system. Overall progress is displayed along with the name of the package being currently installed.



As the final stage of the installation process, the software installer creates the uninstaller.



After the installation process is finished, the Installation Complete window opens showing a summary of the installation paths used.



You can also access the installation log file from the link in this window and open it in a web browser.

You can see the installed packages from the Details tab.

- 11 Click **Done** to close the installation program.

After Installation

After installation, the SiteScope Administration tools folder is created. The SiteScope Administration folder contains the following tools:

- SiteScope Administrator
- SAM Admin Online Help

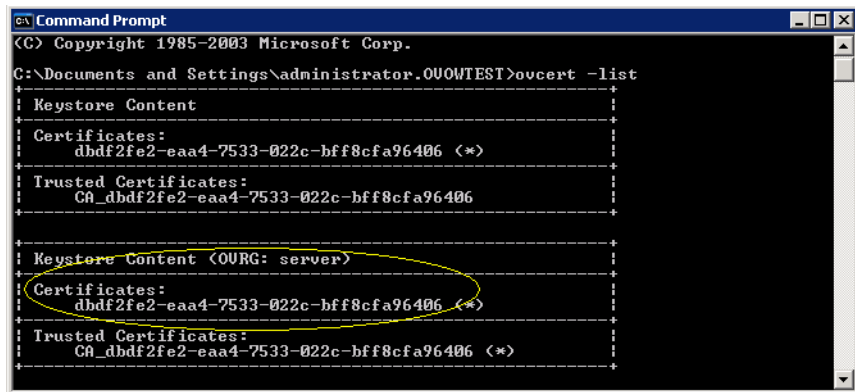
For information about using the tools in the SiteScope Administration folder, see the *HPOM for Windows Online Help*.

Importing and Exporting Certificates

Before you can use HPOM SA, you need to perform the following authentication steps:

- 1 In a command prompt window, execute the following command:

```
ovcert -list
```



```
Command Prompt
(C) Copyright 1985-2003 Microsoft Corp.
C:\Documents and Settings\administrator.0UOWTEST>ovcert -list
-----
: Keystore Content
:
: Certificates:
:   dbdf2fe2-aaa4-7533-022c-bff8cfa96406 (*)
:
: Trusted Certificates:
:   CA_dbdf2fe2-aaa4-7533-022c-bff8cfa96406
:
-----
: Keystore Content <OURG: server>
:
: Certificates:
:   dbdf2fe2-aaa4-7533-022c-bff8cfa96406 (*)
:
: Trusted Certificates:
:   CA_dbdf2fe2-aaa4-7533-022c-bff8cfa96406 (*)
:
-----
```

Note the Certificates: key listed under Keystore Content <OURG: server>.

- 2 Export the certificate to a file specified by you. To export the certificate, execute the following command:

```
ovcert -exportcert -file <filename>
```

where:

<filename> is the user-defined name of the file, for example, cert.p12.

If you are prompted to specify a password to secure the exported key, enter one of your choice (for example **lwssoomw**), and make sure you can recall it.

You see a message confirming that the certificate has been successfully exported to the file you specified (cert.p12, in our example).

- 3 Store the certificate in a new file, by running the `keytool.exe` tool from the `<%OvInstallDir%>\nonOV\jre\b\bin\` directory.

`<%OvInstallDir%>` is the location where you installed HPOM.

To store the certificate in a new file, execute the following command:

```
keytool -export -alias <certificate_key> -keystore  
cert.p12 -storepass <password> -storetype PKCS12 -file  
new.cer
```

where:

<certificate_key> is the certificate key you noted in step 1, and *<password>* is the password you created in step 2.

This command takes the certificate from the file you created in step 2 (in our example, cert.p12), and stores it in the file new.cer.

- 4 Execute the following command:

```
keytool -import -alias <password> -file new.cer -keystore  
lwso.jks -storepass <password>
```

When asked whether you want to trust the certificate, type **y** to add the certificate to the keystore:

```
Trust this certificate? [no]: y
```

- 5 Copy the file `lwso.jks` to the following directory:

```
<%OvInstallDir%>\nonOV\tomcat\b\www\webapps\topaz\WEB-INF  
\classes
```

- 6 Edit the `lwsofmconf.xml` file by following these steps:

- a Navigate to the following directory:

```
<%OvInstallDir%>\nonOV\tomcat\b\www\webapps\topaz\WEB-INF  
\classes
```

- b Open the file `lwssofmconf.xml` in a text editor.
- c Find and replace all instances of the filename `keyStoreFileName="java.keystore"` with `keyStoreFileName="lwssso.jks"`.
- d Find and replace all instances of the password `keyStorePassword="mercurypw"` with `keyStorePassword="<password>"`
 where:
`<password>` is the password you created in step 2.
- e Find the following string:
`<saml2Validation useGZIPCompression="false">`
 and replace it with this string:
`<saml2Validation useGZIPCompression="false"
 publicKeyAlias="<password">`
 where:
`<password>` is the password you created in step 2.
- f Save and close the `lwssofmconf.xml` file.
- g Stop and restart `ovTomcatB` by entering these commands:

```
# ovc -stop ovtomcatB
# ovc -start ovtomcatB
```

Before Assigning to Operators

Before assigning the HPOM SA application to the responsible operators, perform the following tasks:

- An operator requires authorization to use the HPOM SA application. To grant authorization, add the operator to the HP-OVE-ADMINS group.
- Add the local host to the list of trusted sites.
- Enable the web browser to show pop-ups.

Repairing an Installation

If your installation is damaged, execute the installation procedure again and select the **Repair** option in the Maintenance Selection window. The damaged files are replaced and the application should be operational again. Your configuration files are not affected by the repair.

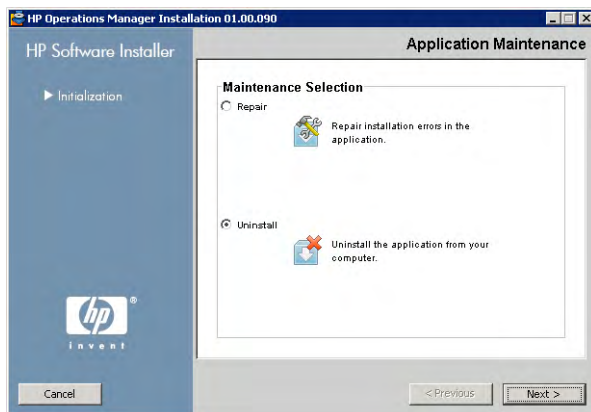
Uninstalling from Management Servers

- ▶ If you plan to remove your entire HPOM installation from the management server system, make sure you remove SiteScope Adapter and SAM Admin before uninstalling HPOM.

To uninstall the HPOM SA software from HPOM management servers, you need to run the software installer again.

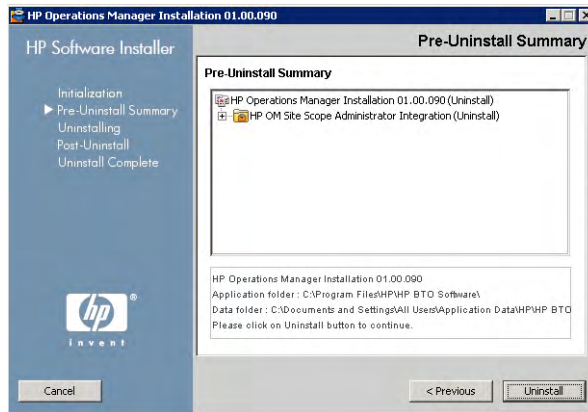
To uninstall the HPOM SiteScope Administration Integration software, follow these steps:

- 1 Run the **HPoprSam_<version>_setup.exe** file you downloaded.
The application installer starts.
- 2 Click **Next** to continue.
- 3 In the Application Maintenance window, select **Uninstall**, then click **Next**.



The pre-uninstallation summary lists the components to be uninstalled.

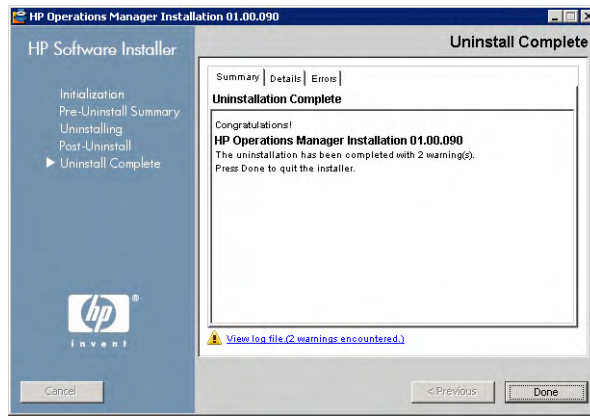
4 Click **Uninstall**.



The HP Software Installer starts to uninstall files from the host system. Overall progress is displayed along with the name of the package currently being uninstalled.



After the installation process is finished, the Uninstallation Complete window opens confirming uninstallation.



You can also access the uninstallation log file from the link in this window and open it in a web browser.

- 5 Click **Done** to close the uninstallation program.
- 6 After uninstallation, there are some items that are not removed, and are still visible in the user interface, even though there is no functionality behind them. You need to remove the following items manually from the HPOM console:

SiteScope Administration application folder, and the sub-groups **SiteScope Administrator** and **SAM Admin Online Help**.

Setting Up Secure HTTPS Communication

To allow secure HTTPS communication between ovTomcatB and SiteScope, perform the following steps. You need to do this for each SiteScope instance for which you want to set up secure HTTPS communication. You can do this before or after installing the software package.

- 1 Copy the file `siscert.cer` from the SiteScope server to the HPOM management server.
- 2 If you are *not* running SiteScope in SSL mode, go to step 3.

If you *are* running SiteScope in SSL mode, enter the following command:

```
%OvInstallDir%nonOV\jre\b\bin keytool -import -alias  
siscertalias -keystore \  
%OvInstallDir%nonOV\jre\b\lib\security\cacers -storepass  
changeit -file siscert.cer
```

3 Stop and restart ovTomcatB by entering these commands:

```
# ovc -stop ovtomcatB  
# ovc -start ovtomcatB
```

