

ChangeManagement Universe

Universe Parameters

Definition

Name: ChangeManagement
Description:

Connection: XS_DWH_JDBC

General information

Created: 3/28/2011 by Administrator
Modified: 2/7/2012 by Administrator
Comments:

Statistics: 6 Classes
84 Objects
3 Tables
3 Aliases
5 Joins
0 Contexts
0 Hierarchies
0 Conditions

Strategies

Join strategy: Edit Manually (none)
Table strategy: (Built-in) Standard
Object strategy: (Built-in) Standard Renaming

Controls

Limit size of result set to: 5000 rows
Limit size of long text objects to: 1000 characters
Limit execution time to: 10 minutes
Warn if cost estimate exceeds: unchecked

SQL parameters

Query
Allow use of subqueries: yes
Allow use of union, intersect and minus operators: yes
Allow complex conditions in Query Panel: yes
Cartesian products: warn
Multiple paths
Generate several SQL statements for each context: yes
Generate several SQL statements for each measure: yes
Allow selection of multiple contexts: no

Links

No links for this universe

Object List

Change

Urgency
Priority
ApprovalStatus
ChangeCategory
CompletionCode
ReferenceNumber
EmergencyChange
UnplannedChange
CreateTime
CloseTime
OutageStart
OutageEnd

Service

Name
Description
DisplayLabel
BusinessCriticality
State
Type
Level0
Level1
Level2
Level3
Level4
Level5
Level6
Level7
Level8
Level9

CreateTimePeriod

Name
Description
DisplayLabel
StartDate
EndDate
Periodicity
PeriodNumber
FinancialUsage
YearNumber
Year
Quarter
Month

Week

Day

ClosedTimePeriod

Name

Description

DisplayLabel

StartDate

EndDate

Periodicity

PeriodNumber

FinancialUsage

YearNumber

Year

Quarter

Month

Week

Day

OutageStartPeriod

Name

Description

DisplayLabel

StartDate

EndDate

Periodicity

PeriodNumber

FinancialUsage

YearNumber

Year

Quarter

Month

Week

Day

OutageEndPeriod

Name

Description

DisplayLabel

StartDate

EndDate

Periodicity

PeriodNumber

FinancialUsage

YearNumber

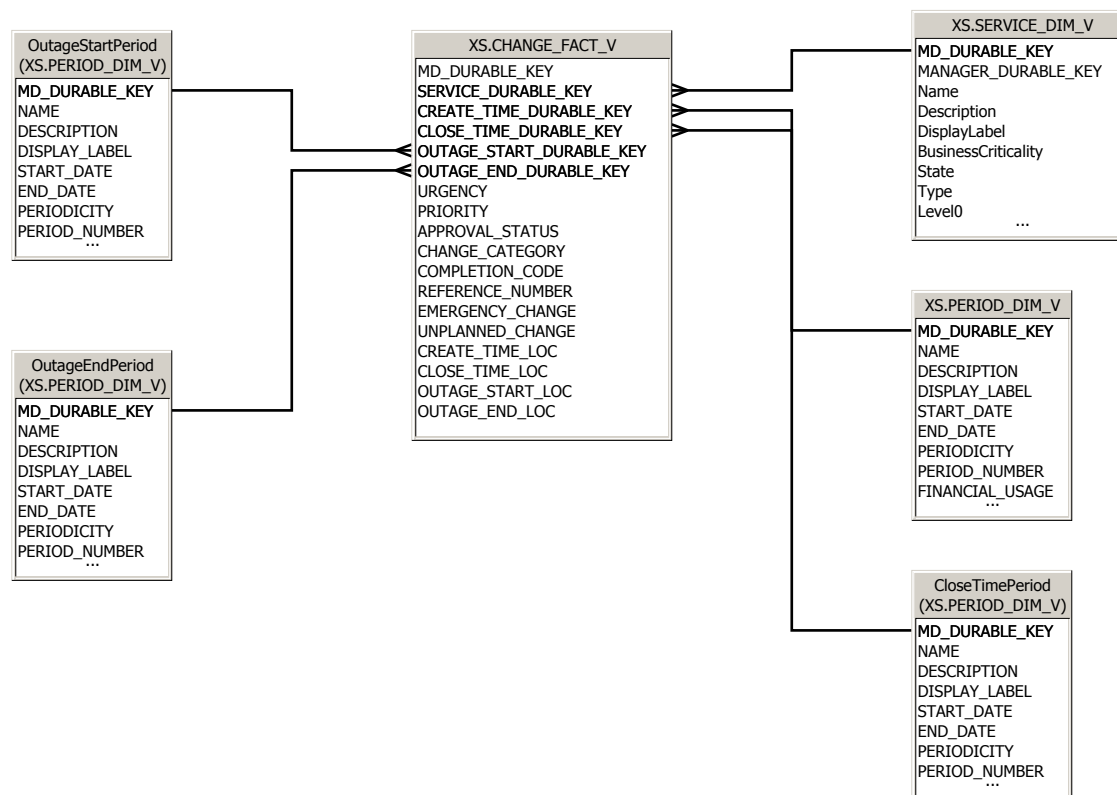
Year

Quarter

Month

Week

Day



XS.SERVICE_DIM_V
D_DURABLE_KEY
MANAGER_DURABLE_KEY
name
description
displayLabel
businessCriticality
date
type
level0
...

XS.PERIOD_DIM_V
D_DURABLE_KEY
NAME
DESCRIPTION
DISPLAY_LABEL
START_DATE
END_DATE
PERIODICITY
PERIOD_NUMBER
FINANCIAL_USAGE
...

CloseTimePeriod
(XS.PERIOD_DIM_V)
D_DURABLE_KEY
NAME
DESCRIPTION
DISPLAY_LABEL
START_DATE
END_DATE
PERIODICITY
PERIOD_NUMBER
...