


HP Data Protector

A.06.11

Getting started

This guide is designed to help you get started quickly. Using the default settings, you can quickly and easily install the software, create a backup, and do a restore.

 **NOTE:** This guide applies to the full Data Protector product. If you have a Single Server Edition, some of the platforms and features mentioned may not apply.

Contents

Installing on Windows systems 3

Installing Cell Manager 3

Installing clients 5

Installing on UNIX systems 6

Installing Cell Manager 6

Installing clients 7

Next steps 9

Configuring backup devices 9

Formatting media 11

Backing up your system 12

Defining a schedule for a simple backup routine 13

Restoring from a backup 14

Data Protector documentation map 15

Abbreviations 15

Map 16

Data Protector integrations 17

Licensing 18

For more information 18

The information contained herein is subject to change without notice. The only warranties for HP products and services are set forth in the express warranty statements accompanying such products and services. Nothing herein should be construed as constituting an additional warranty. HP shall not be liable for technical or editorial errors or omissions contained herein.


Windows® is a U.S. registered trademark of Microsoft Corporation.

Intel® and Pentium® are trademarks of Intel Corporation in U.S. and other countries.

UNIX® is a registered trademark of The Open Group.

Java™ is a U.S. trademark of Sun Microsystems, Inc.

Installing on Windows systems

 **NOTE:** For full installation details, see the *HP Data Protector installation and licensing guide* in the /docs directory of the top level of the Windows installation DVD-ROM.

Prerequisites

- Management Server (Cell Manager):
 - 256 MB RAM (512 MB recommended)
 - 190 MB disk space +2% of planned backup data
- Backup Client (Disk Agent):
 - 64 MB RAM (128 MB recommended)
 - 10 MB disk space
- Device Server (Media Agent):
 - 64 MB RAM (128 MB recommended)
 - 20 MB disk space
- User Interface (GUI):
 - 256 MB RAM
 - 100 MB disk space including 45 MB electronic manuals
- Java User Interface (Java GUI):
 - 1000 MHz Intel Pentium or equivalent (2.6 GHz Intel Pentium IV or equivalent recommended)
 - 512 MB (1 GB RAM recommended)
 - 200 MB disk space including online help (300 MB recommended)
 - For a Java GUI Client, Java Runtime Environment (JRE) 1.5.0_06 or later minor version (such as 1.5.0_07)

If you plan to install all the components on the same system, the system must have 305 MB of disk space and at least 256 MB of RAM (512 MB recommended).

Installing Cell Manager

See <http://www.hp.com/support/manuals> and search for “Data Protector”. Select version 6.11 for platforms supported with this release.

Prepare for installation

1. On the system that is to be your Data Protector Cell Manager:
 - a. For a standalone tape drive, connect the tape device to the Data Protector Cell Manager and power it on.

- b. Enable TCP/IP protocol and hostname resolution.
To check if they are enabled:
- i. Verify name resolution is working properly by finding the name of the computer:
 - Open Command Prompt (on Windows platform) or Terminal (on UNIX platform).
 - Type: `hostname`
The name of your computer will be displayed.
 - ii. Verify name resolution and reachability:
 - Type: `nslookup Hostname`
 - Trigger a reverse DNS lookup, by typing:
`nslookup IPAddress`
The network is set up properly when you get the same hostname and IP address from both commands.
(If you have problems with your network, see the *HP Data Protector troubleshooting guide*.)
- c. Assign a static IP address.
- d. Deactivate the Windows tape device and changer drivers (recommended). (Only use these drivers in exceptional cases, for example, when other applications access this tape device.)

2. Log on to the system as Administrator.

3. Set up a separate Windows account for use with Data Protector, such as `dpadmin`. Ensure that:

- The user is a member of Administrators and Backup Operators.
- The user has logon rights as service (Windows advanced rights).

This user account is needed solely to provide the required services. It will not be used to log on to an individual's system.

The account should be used as the Data Protector service account in server and client installations. In a Windows domain, you only need to set up the account on the Primary Domain Controller.

Install Data Protector

4. Insert the Windows installation DVD-ROM and run `\i386\setup.exe` to start the wizard.

5. Select **Cell Manager** and follow the wizard using the default values.

6. In the **Account information** window, enter the user name and password for the user account you created in step 3.

To run the program:

Start > Programs > HP Data Protector > Data Protector Manager

For further information, see the documentation in the `\docs` directory in the top-level directory of the DVD-ROM.

Installing clients

See <http://www.hp.com/support/manuals> and search for “Data Protector”. Select version 6.11 to find out about supported platforms with this release.

Prerequisites

- Cell Manager installed
- Administrator rights and password
- TCP/IP protocol and node name resolution enabled

RAM and disk space—minimum and recommended (rec.)

Client system component	RAM (MB)	Disk space (MB)
Original GUI	256 ¹	150 ²
Java GUI ³	512 (1,000 rec.)	40 (60 rec.)
Disk Agent	64 (128 rec.)	10
Media Agent	64 (128 rec.)	20
Integration modules	64 (128 rec.)	20
English documentation & Help	n/a	80

¹Depends on the number of elements that need to be displayed at a time.

²The page file alone needs to be able to grow to about 3 times the physical memory

³The Java GUI also requires at least a 1 GHz Pentium III processor (2.6 GHz Pentium IV recommended)


To install remotely, from the Cell Manager GUI:

1. Log on to the system as Administrator.
2. Click **Start > Programs > HP Data Protector > Data Protector Manager**.
3. In the Data Protector Manager, switch to the Clients context.
4. In the Scoping Pane, right-click Clients and select **Add Clients** to start the wizard.
5. Follow the instructions.

To install locally, on the intended system:

1. Log on to the system as Administrator.
2. Run `\\i386\setup.exe`.
3. Start the Client Installation.
4. Follow the instructions.


Installing on UNIX systems

 **NOTE:** For full installation details, see the *HP Data Protector installation and licensing guide* in the `/docs` directory of the DVD-ROM.

Installing Cell Manager

 **NOTE:** For supported platforms, see <http://www.hp.com/support/manuals>.

The following is an example of a Cell Manager installation with backup device locally attached using the default configuration.

 **NOTE:** On all UNIX platforms, only the Java GUI is supported. This requires 75–200 MB of disk space, depending on which online help languages are installed. For English, only 75 MB is required. The disk space figures below include the Java GUI, Disk Agent, and Media Agent.

Prerequisites (HP-UX)

- Java JRE, 1.5.0_06 or later minor version
- HP-UX 11.x
- 256 MB RAM (512 MB recommended)
- 350–550 MB free disk space +2% planned backup data

Prerequisites (Solaris)

- Java JRE, 1.5.0_06 or later minor version
- Solaris 8/9/10
- 256 MB RAM (512 MB recommended)
- 350–550 MB free disk space +2% planned backup data
- root permissions on every target system
- ksh shell (provided by default)

Prerequisites (Linux)

- Java JRE, 1.5.0_06 or later minor version
- 256 MB RAM (512 MB recommended)
- 300–425 MB free disk space +2% planned backup data
- For Linux SUSE 9 and RedHat Enterprise 4.0, there are prerequisites concerning libstdc++. For details, see “Installation requirements” in the *Data Protector product announcements, software notes, and references*.

Procedure

On your Data Protector Cell Manager:

1. Mount the UNIX installation DVD-ROM to a mount point, for example:

```
mkdir/cdrom
mount/dev/dsk/c0t0d0/cdrom
```

2. Run `omnisetup.sh`. To run the command from the DVD-ROM:

```
cd /cdrom/LOCAL_INSTALL
./omnisetup.sh -CM
```

3. Follow the instructions when prompted.

Install clients either from the Cell Manager or locally.

To run Data Protector

Enter `/opt/omni/bin/xomni` to start the Data Protector GUI.

Installing clients

See <http://www.hp.com/support/manuals> and search for “Data Protector”. Select version 6.11 to find out about supported platforms with this release.

Prerequisites

- root permissions on every target system
- ksh shell

RAM and disk space—minimum and recommended (rec.)

Client system component	RAM (MB)	Disk space (MB)
Java GUI	512 (1,000 rec.)	40 (60 rec.)
Disk Agent	64 (128 rec.)	10
Media Agent	64 (128 rec.)	20
Integration modules	64 (128 rec.)	20
English documentation & Help	n/a	80

Remote installation

Distribute the software to clients using the Data Protector user interface. Cross-platform client installation is supported.

1. Enter `/opt/omni/bin/xomni` to start the Data Protector GUI.
2. In the Data Protector Manager, switch to the **Clients** context.
3. In the Scoping Pane, right-click **Clients** and select **Add Clients** to start the wizard.
4. Follow the instructions. Refer to the online Help for details on each wizard page.

After the Media Agent is installed, check your configuration files (`/kernel/drv/st.conf`). See "Installing Solaris clients" in the *HP Data Protector installation and licensing guide* for specifics.

Finally, connect a backup device to the system.

Local installation

1. Insert the HP-UX installation DVD-ROM.
2. Mount the installation DVD-ROM to a mount.
3. Change directory to `Mount_Point/LOCAL_INSTALL` and run:

```
omnisetup.sh [-source directory] [-server  
name] [-install component list]
```

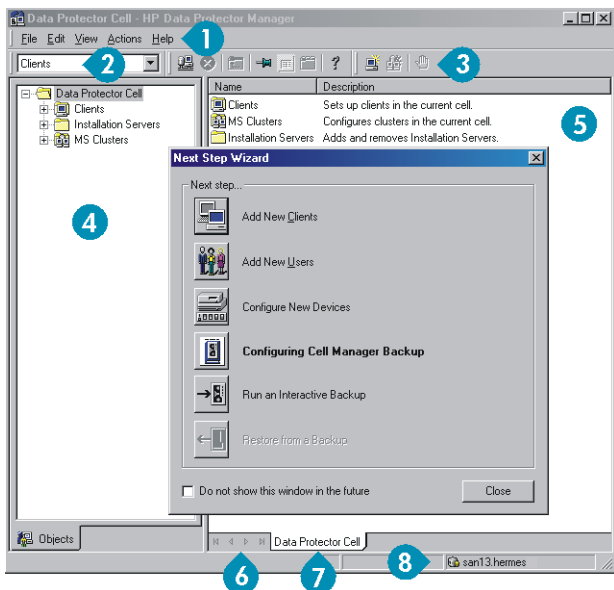
See the *HP Data Protector installation and licensing guide* for a list of Data Protector component codes.
4. `omnisetup` informs you if the installation was completed and if the client was imported to the Data Protector cell. The CORE and CORE-INTEG components are automatically installed.

If you specified the name of the Cell Manager, the client will be imported to the cell. If not, import it using the Data Protector GUI.

Next steps

You can now run the Data Protector Manager.

Start the Data Protector Manager. The Data Protector Manager will open, displaying the Clients context and Next Step wizard:



- 1 Menu bar
- 2 Context list
- 3 Tool bar
- 4 Scoping pane
- 5 Results area
- 6 Navigation tabs
- 7 Results tabs
- 8 Status bar

 **NOTE:** The Java GUI looks slightly different from this.

Configuring backup devices

Configuring a file library device

These instructions are for a simple file library device configuration on a local or shared drive using mostly default options. For other possibilities see the online Help index: "Configuring Backup Devices".

Before you start: On Windows, disable the compression option.

1. Create a directory on a local or shared disk.

Example: C:\FileLibrary

2. Start Data Protector.
3. Select **Devices & Media** from the Context List.
4. Right-click **Devices** and select **Add Device** to open the device definition pane.
5. Enter details:

Device Name	<i>Example:</i> File Library Device 01
Description	optional
Client	Select the client to which the device is connected.
Device Type	Select File Library.

Click **Next**.
6. Specify the directory for the file library device you created in step 1 and click **Add**.
7. Click **Next**. In the Results Area, select the media type: *File*.
8. Click **Finish**.

Configuring a standalone drive

Autoconfiguration

1. Select **Devices & Media** from the Context List.
2. Right-click **Device**.
3. Select **Autoconfigure Devices**.
4. Select your system from the list and click **Finish**.

Your device is configured automatically.

Manual configuration

Follow the instruction for a file library device above, up to step 4. Then:

5. Enter details:

Device Name	<i>Example:</i> LTO-3 Tape Drive
Description	optional
Client	Select the client to which the device is connected.
Device Type	Select Standalone.

Click **Next**.
6. Enter the SCSI address by expanding the field and selecting one of the options. Click **Add**.
7. Click **Next**. In the Results Area, select the correct media type, such as *LTO*.
8. Click **Finish**.

Formatting media

Data Protector writes its own header on each tape so it can be recognized later. This can be done manually, as described in this section, or automatically. Before tapes can be used with Data Protector they need to be formatted. Skip this section if you want Data Protector to format the tape automatically.

 **CAUTION:** Formatting deletes all data on the media.

1. In the Devices & Media Context expand **Pools**.
2. Right-click the appropriate Media Pool.
3. Select **Format**.
4. In the Results Area select the drive and click **Next**.
5. Keep default settings and click **Next**.
6. Click **Force Operation** and **Default Medium Size** then **Finish**. Data Protector formats the media.

Backing up your system

The following steps show how to create a backup specification and perform a simple backup.

1. In the Context List, click **Backup**.
2. In the Scoping Pane, expand **Backup** and then click **Backup Specifications**.
3. In the Results Area, right-click the **Filesystem** item and select **Add Backup**.
4. Select the Blank Filesystem Backup template and click **OK**.
5. In the Source page that appears in the Results Area, browse for and select the checkboxes next to the directories and files that you want to back up, then click **Next**. If you do not have a tape device connected, please select just a few small directories.
6. In the Destination page that appears in the Results Area, select the device that you want to use for the backup and click **Next**.
7. Use the default backup specifications options or select the desired backup options and click **Next**.
8. Use the predefined schedule options or select the desired backup options and then click **Next**. See "[Defining a schedule for a simple backup routine](#)" on page 13 for an example.
9. The backup specification summary is displayed in the Results Area. Click **Next**.
10. Click **Save As** to save the backup specification for later use.
11. Click **Start Backup** to run the backup.
12. When the Start Backup window opens, click **OK** to start the backup using the default specifications.
13. The Backup window shows you the progress of the backup session. The Session Information window will tell you when the backup is finished.

Defining a schedule for a simple backup routine

As an example, suppose you want to define a schedule with a full backup every Friday and incremental backups on other weekdays, all at 21:00h and retained for 4 weeks, plus a full backup each month retained for 12 months.

Data Protector has several predefined schedules. “Weekly full” is close to what is needed—full every Friday and Incr1 every weekday at 21:00h. Incr1 backups back up all changes since the last full backup.

To create the defined schedule:

1. When defining your backup specification, at step 7 (see page 12), go to the **Schedule** tab.
2. Click **Predefined**.
3. Select **Weekly full** and click **OK**.
4. Click **Add**.
5. Under **Recurring**, select **Monthly**.
Under **Time options**, specify the time for the monthly backup.
Under **Session options**, from the **Backup protection** drop-down list, select **Weeks** and type the number of weeks in the box below (1 year = 52 weeks).

Schedule Backup

Specify the desired backup time, frequency, duration, and type.

Recurring

None
 Daily
 Weekly
 Monthly

Time options

Time: 10 hours 45 minutes
 Use starting
Month: 2005 December Day: 3

Recurring options

Day 1 of every 1 month

Session options

Backup type: Full
Network load: High Medium Low
Backup protection: Weeks 52

6. Click **OK**.
7. Click **Apply**.

Restoring from a backup

By default, the backup object is restored to the same path from which it was backed up. The following steps show how to perform a simple restore.

1. In the Context List, click **Restore**.
2. Browse the **Filesystem** item and select the client object that you want to restore. The Restore view appears in the Results Area.
3. Browse for and select the check-boxes next to the directories/files to be restored.
4. Select the **Destination** tab to choose where you want to restore to. If you do not select anything, the selected directories/files will be restored to the original path.
5. Click the **Start Restore** button. The restore wizard appears.
6. Follow the proposed defaults in the wizard (click **Next** and **Finish**).
7. The Start Restore Session window opens, showing you the progress of the selected objects being restored to the system.

Data Protector documentation map

Abbreviations

The following abbreviations for HP Data Protector guides are used in the documentation map and list of integrations that follow.

Abbreviation	Manual
CLI	Command line interface reference guide
Concepts	Concepts guide
DR	Disaster recovery guide
GS	Getting started guide
Help	Online help
IG-IBM	Integration guide—IBM applications
IG-MS	Integration guide—Microsoft applications
IG-O/S	Integration guide—Oracle, SAP R/3, and SAP DB/MaxDB
IG-OMU	Integration guide—HP Operations Manager, UNIX
IG-OMW	Integration guide—HP Operations Manager, Windows
IG-Report	Integration guide—HP Reporter
IG-SIP	Integration guide—HP Service Information Portal
IG-Var	Integration guide—VMware, Sybase, Network Node Manager, and NDMP Server
Install	Installation and licensing guide
MO GS	Media Operations getting started guide
MO RN	Media Operations product announcements, software notes, and references
MO UG	Media Operations user guide
MPE/iX	MPE/iX system user guide
PA	Product announcements, software notes, and references
Trouble	Troubleshooting guide
ZDB Admin	Zero Downtime Backup administrator's guide
ZDB Concpt	Zero Downtime Backup concepts guide
ZDB IG	Zero Downtime Backup integration guide

Map

The following table shows where to find information of different kinds. Shaded squares are a good place to look first.

	Help	GS	Concepts	Install	Trouble	DR	PA	Integration Guides							ZDB		MO							
								MS	O/S	IBM	Var	OMU	OMW	PM/PA	Report	SIP	Concept	Admin	IG	GS	User	PA	MPE/iX	CLI
Backup	X	X	X					X	X	X	X	X				X	X	X					X	
CLI																								X
Concepts/ Techniques	X		X					X	X	X	X	X	X	X	X	X	X	X						X
Disaster Recovery	X		X			X																		
Installation/ Upgrade	X	X		X			X					X	X	X	X	X			X	X			X	
Instant Recovery	X		X													X	X	X						
Licensing	X		X				X														X			
Limitations	X			X			X	X	X	X	X	X	X	X	X			X					X	
New features	X						X																X	
Planning strategy	X		X														X							
Procedures/ Tasks	X			X	X	X		X	X	X	X	X	X	X	X	X	X	X	X			X		
Recommendations			X				X										X						X	
Requirements				X			X	X	X	X	X	X	X	X					X	X	X		X	
Restore	X	X	X					X	X	X	X							X	X				X	
Supported configurations																	X							
Troubleshooting	X			X	X			X	X	X	X							X	X					

Data Protector integrations

Look in these manuals for details of the following integrations:

Integration	Guide
HP Operations Manager	IG-OMU, IG-OMW
HP Performance Agent	IG-PM/PA
HP Performance Manager	IG-PM/PA
HP Reporter Light	IG-OMW
HP Reporter	IG-Report
HP Service Information Portal	IG-SIP
HP StorageWorks Disk Array XP	all ZDB
HP StorageWorks Enterprise Virtual Array (EVA)	all ZDB
HP StorageWorks Virtual Array (VA)	all ZDB
IBM DB2 UDB	IG-IBM
Informix	IG-IBM
Lotus Notes/Domino	IG-IBM
Media Operations	MO User
Microsoft Exchange Server	IG-MS, ZDB IG
Microsoft Exchange Single Mailbox	IG-MS
Microsoft SQL Server	IG-MS, ZDB IG
Microsoft Volume Shadow Copy Service (VSS)	IG-MS, ZDB IG
MPE/iX System	MPE/iX
NDMP Server	IG-Var
Network Node Manager (NNM)	IG-Var
Oracle	IG-O/S
Oracle Zero Downtime Backup	ZDB IG
SAP DB	IG-O/S
SAP R/3	IG-O/S, ZDB IG
Sybase	IG-Var
Symmetrix (EMC)	all ZDB
VMware	IG-Var

Licensing

Data Protector comes with an instant-on license for 60 days after installation. Within this period you can request a permanent password from the HP Password Delivery Center (PDC) and install it.

The permanent password permits you to configure a Data Protector cell with regard to your backup policy, provided that you have purchased all required licenses.

To obtain a password, visit the password delivery homepage at <http://www.webware.hp.com> or consult the *HP Data Protector installation and licensing guide*, “Data Protector licensing” section, for more information.

For more information

For more information about HP Data Protector, visit www.hp.com/go/dataprotector or call your local HP reseller or HP sales office.