

HP Cloud Service Automation

Software Version 4.00



Reporting

Document release date: January 2014

Software release date: January 2014



Contents

Overview	3
Prerequisites	3
Database Views	3
RPT_SUBSCR_OPTS_V View	4
RPT_RSC_CAPACITY_V View	5
RPT_RESOURCE_UTILIZATION_V View.....	5
RPT_USER_SUBSCR_V View	6
RPT_SUBSCR_RSC_V View	6
Use Jaspersoft Software to Create and Deploy Reports	7
Install Jaspersoft iReport Designer and Create Reports	7
Install and Configure JasperReports Server for Use with HP CSA	17
Deploy a Report in JasperReports Using the iReport Designer	22
Define the Data Source for a Report.....	25

© Copyright 2014 Hewlett-Packard Development Company, L.P. The information contained herein is subject to change without notice. The only warranties for HP products and services are set forth in the express warranty statements accompanying such products and services. Nothing herein should be construed as constituting an additional warranty. HP shall not be liable for technical or editorial errors or omissions contained herein.

Restricted rights legend: Confidential computer software. Valid license from HP required for possession, use or copying. Consistent with FAR 12.211 and 12.212, Commercial Computer Software, Computer Software Documentation, and Technical Data for Commercial Items are licensed to the U.S. Government under vendor's standard commercial license.

Microsoft and Windows are U.S. registered trademarks of Microsoft Corporation. AMD is a trademark of Advanced Micro Devices, Inc. Intel and Xeon are trademarks of Intel Corporation in the U.S. and other countries. Oracle and Java are registered trademarks of Oracle and/or its affiliates.

Overview

This document describes the database views that you can use to run reports in HP Cloud Service Automation (HP CSA) 4.0. It also provides an example of how to install, configure, and use third-party reporting software (from Jaspersoft Corporation) to run HP CSA reports.

Prerequisites

HP CSA 4.0 supports databases from Oracle, Microsoft SQL, and PostgreSQL for reports. Before you can run reports, you must create a read-only database user (and a role, if using Oracle) specifically for reporting purposes, and then you must specify its username and password during the HP CSA 4.0 installation or during the upgrade to HP CSA 4.0. For instructions, see the *HP Cloud Service Automation 4.0 Installation Guide*.

Database Views

HP CSA 4.0 provides some commonly-needed information for a sequence-based model through the (non-materialized) database views for reporting. A read-only database user will have access to these views, which they can use to design reports.

The following table lists each view and some filters (list of values) that read-only users can use in a report designer.

Table 1. List of Database Views

Number	View name	Filters (list of values)	Description and comments
1	RPT_RSC_CAPA_CITY_V	RPT_LOV_PROVIDER_V RPT_LOV_PROV_POOL_V	Within each Pool, list Resource Type, Quantity Used, Quantity Remaining, and Units.
2	RPT_USER_SUBSCRIPTION_V	RPT_LOV_ORG_V RPT_LOV_ORG_USR_V RPT_LOV_CAT_OFFR_V	Group by Organization and by User consuming the subscription (filter by organization, user, and offering). Group information must be fetched from the view. The group here is the 'Owned By' group.
3	RPT_SUBSCR_RSC_V	RPT_LOV_PROVIDER_V RPT_LOV_PROV_POOL_V	Group by Provider and by the Resource Pools defined within it (with subscription details).
4	RPT_SUBSCR_OPTS_V	RPT_LOV_ORG_USR_V	Show the options and option prices for subscriptions.
5	RPT_RESOURCE_UTILIZATION_V	RPT_LOV_PROVIDER_V RPT_LOV_PROV_POOL_V	Provide information on resource utilization for subscriptions.

RPT_SUBSCR_OPTS_V View

This view provides the options and option prices for subscriptions.

Table 2. RPT_SUBSCR_OPTS_V View

Field name (in the view)	Functional description
SUBSCRIPTION_ID	Identifier of the service subscription
OPTION_MODEL_ID	Identifier of the option model
CURRENCY_DISPLAY_NAME	Display name of the currency used in the option model
RECURRING_PERIOD_DISPLAY_NAME	Display name of the recurring period used in the option model
L1_OPTION_SET_ID	Top-level option set ID
L1_OPTION_SET_NAME	Top-level option set name
L1_OPTION_SET_DISPLAY_NAME	Top-level option set display name
L1_OPTION_ID	Top-level option ID
L1_OPTION_NAME	Top-level option name
L1_OPTION_DISPLAY_NAME	Top-level option display name
L1_OPTION_SELECTED	'Y' if the top-level option is selected 'N' if the top-level option is not selected
L1_INITIAL_PRICE	Initial price of the top-level option
L1_RECURRING_PRICE	Recurring price of the top-level option
L2_OPTION_SET_ID	Child-level option set ID
L2_OPTION_SET_NAME	Child-level option set name
L2_OPTION_SET_DISPLAY_NAME	Child-level option set display name
L2_OPTION_ID	Child-level option ID
L2_OPTION_NAME	Child-level option name
L2_OPTION_DISPLAY_NAME	Child-level option display name
L2_OPTION_SELECTED	'Y' if the child-level option is selected 'N' if the child-level option is not selected
L2_INITIAL_PRICE	Initial price of the child-level option
L2_RECURRING_PRICE	Recurring price of the child-level option
L3_OPTION_SET_ID	Grandchild-level option set ID
L3_OPTION_SET_NAME	Grandchild-level option set name
L3_OPTION_SET_DISPLAY_NAME	Grandchild-level option set display name
L3_OPTION_ID	Grandchild-level option ID
L3_OPTION_NAME	Grandchild-level option name
L3_OPTION_DISPLAY_NAME	Grandchild-level option display name
L3_OPTION_SELECTED	'Y' if the grandchild-level option is selected 'N' if the grandchild-level option is NOT selected
L3_INITIAL_PRICE	Initial price of the grandchild-level option
L3_RECURRING_PRICE	Recurring price of the grandchild-level option

RPT_RSC_CAPACITY_V View

This view provides a list of providers and pools and their available capacity and utilization.

Table 3. RPT_RSC_CAPACITY_V View

Field name (in the view)	Functional description
PROVIDER_ID	Identifier of the resource provider
PROVIDER_NAME	Name of the resource provider
PROVIDER_TYPE	Type of resource provider
SERVICE_ACCESS_POINT	Access point URL for the provider
RESOURCE_POOL_ID	Identifier of the resource pool
RESOURCE_POOL_NAME	Name for the resource pool
KNOWN_TO_PROVIDER_AS	Name of the resource pool used by the provider
RESOURCE_TYPE	Type of resource (such as CPU or Storage)
AVAILABILITY	Category to indicate if the resource is available
AVAILABLE_TO_CSA	Quantity of the resource that is available to HP CSA in the pool
USED_BY_CSA	Quantity of the resource that has been used by HP CSA from this pool

RPT_RESOURCE_UTILIZATION_V View

This view provides the information on resource utilization for subscriptions.

Table 4. RPT_RESOURCE_UTILIZATION_V View

Field name (in the view)	Functional description
SUBSCRIPTION_ID	Identifier of the subscription
SUBSCRIPTION_NAME	Name of the subscription
COMPONENT_ID	Identifier for the service component
COMPONENT_NAME	Name of the service component
RESOURCE_POOL_ID	Identifier of the resource pool
RESOURCE_POOL_NAME	Name of the resource pool
PROVIDER_ID	Identifier of the provider
PROVIDER_NAME	Name of the provider
MEASURABLE_PROPERTY_NAME	Name given to the measurable property
RESOURCE_TYPE	Type of resource for this measurable property
RESOURCE_UNIT	Measuring unit of this resource in the measurable property
UTILIZATION	Quantity of this resource that has been used by this subscription in this pool

RPT_USER_SUBSCR_V View

This view provides detailed information for subscriptions (excluding the Option selection and Pricing information).

Table 5. RPT_USER_SUBSCR_V View

Field name (in the view)	Functional description
SUBSCRIPTION_ID	Identifier of the subscription
SUBSCRIPTION_NAME	Name of the subscription as displayed
SUBSCRIPTION_START_DATE	Start date of the subscription
SUBSCRIPTION_END_DATE	End date of the subscription
SUBSCRIPTION_OWNER_GROUP	Name of the group that owns this subscription (applicable only for subscriptions owned by a group)
SUBSCRIPTION_STATUS	Status of the subscription
REQUESTED_BY_USER_ID	Identifier of the user requesting the subscription
REQUESTED_BY_USER	Name of the user requesting the subscription
REQUESTED_BY_USER_EMAIL	Email address of the user requesting the subscription
ORGANIZATION_ID	Identifier of the organization to which this subscription belongs
ORGANIZATION_NAME	Name of the organization to which this subscription belongs
CATALOG_ID	Identifier of the catalog to which this subscription belongs
CATALOG_NAME	Name of the catalog to which this subscription is published
SERVICE_OFFERING_ID	Identifier of the service offering for which this subscription was submitted
SERVICE_OFFERING_NAME	Name of the service offering for which this subscription was submitted

RPT_SUBSCR_RSC_V View

This view provides information about the Resource Provider and Resource Pool used by a subscription.

Table 6. RPT_SUBSCR_RSC_V View

Field name (in the view)	Functional description
SUBSCRIPTION_ID	Identifier of the subscription
RESOURCE_PROVIDER_ID	Identifier of the resource provider
RESOURCE_PROVIDER_NAME	Name of the resource provider
PROVIDER_ACCESS_POINT_URI	Access point URI of the resource provider
RESOURCE_PROVIDER_TYPE	Type of the resource provider
RESOURCE_POOL_ID	Identifier of the resource pool
RESOURCE_POOL_NAME	Name of the resource pool

Use Jaspersoft Software to Create and Deploy Reports

This section uses Jaspersoft software as an example of how to install, configure, and use third-party reporting tools to create and deploy HP CSA reports.

Install Jaspersoft iReport Designer and Create Reports

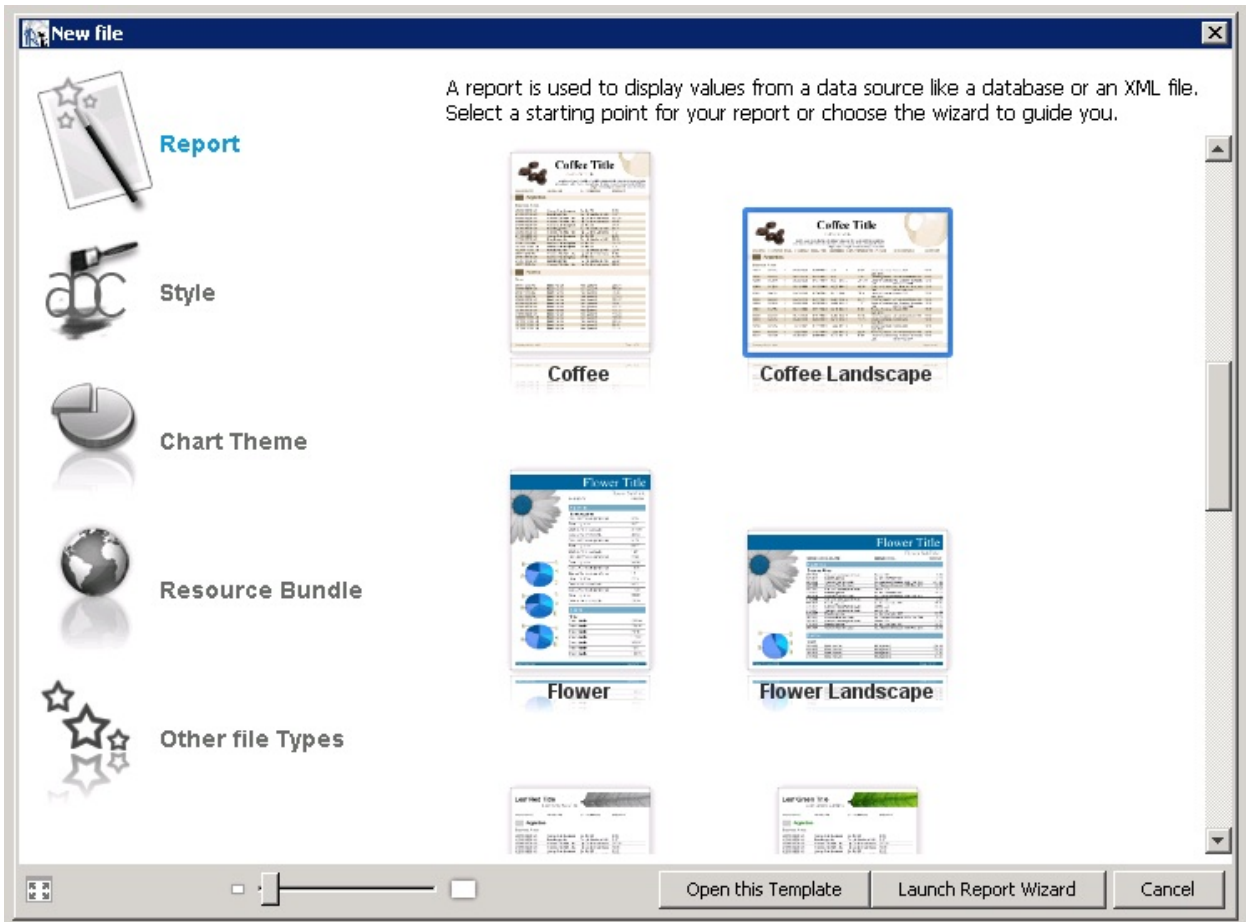
iReport Designer is the report development tool for JasperReports and JasperReports Server.

1. Install iReport Designer by following the instructions at

<http://sourceforge.net/projects/ireport/>

2. Start iReport Designer.

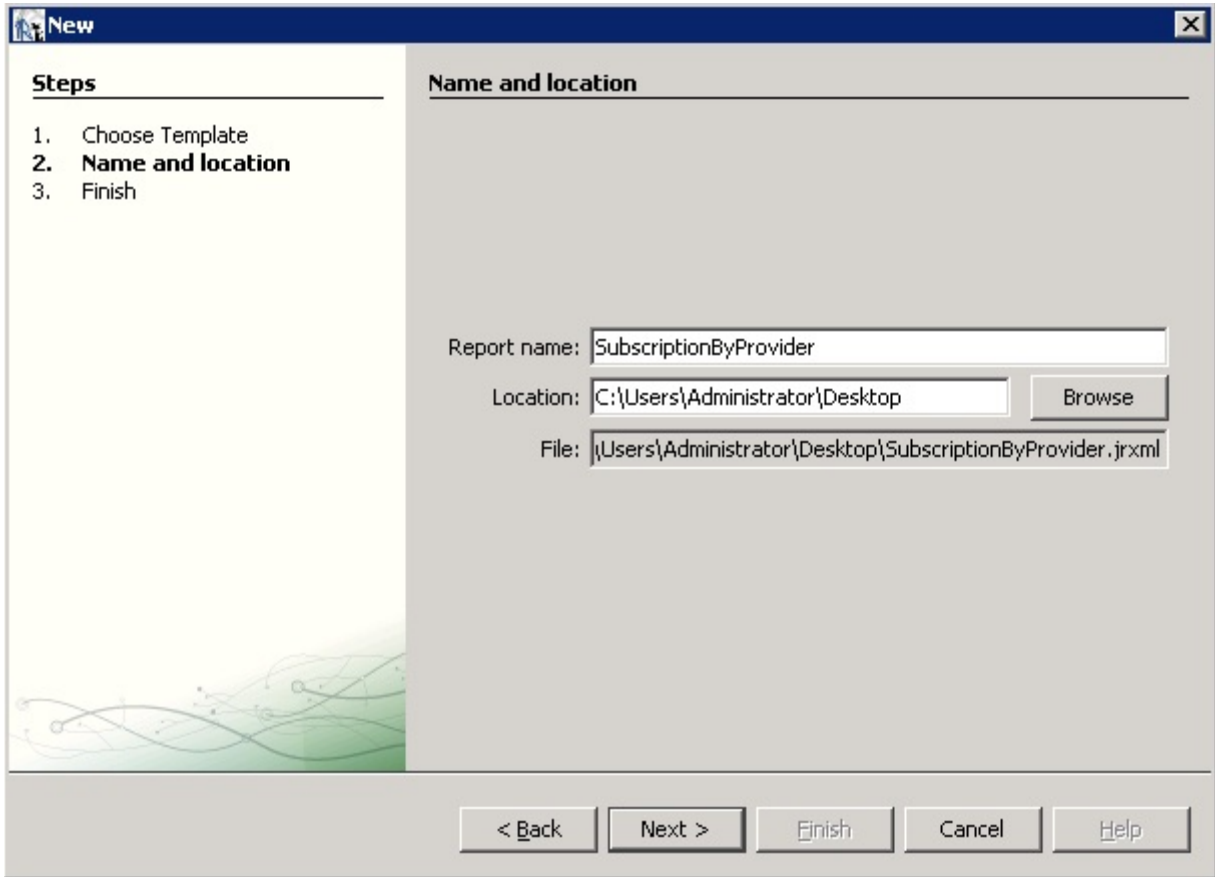
The **New file** dialog box appears.



3. Click to select a report template.

4. Click **Open this Template**.

The **Name and location** dialog box appears.

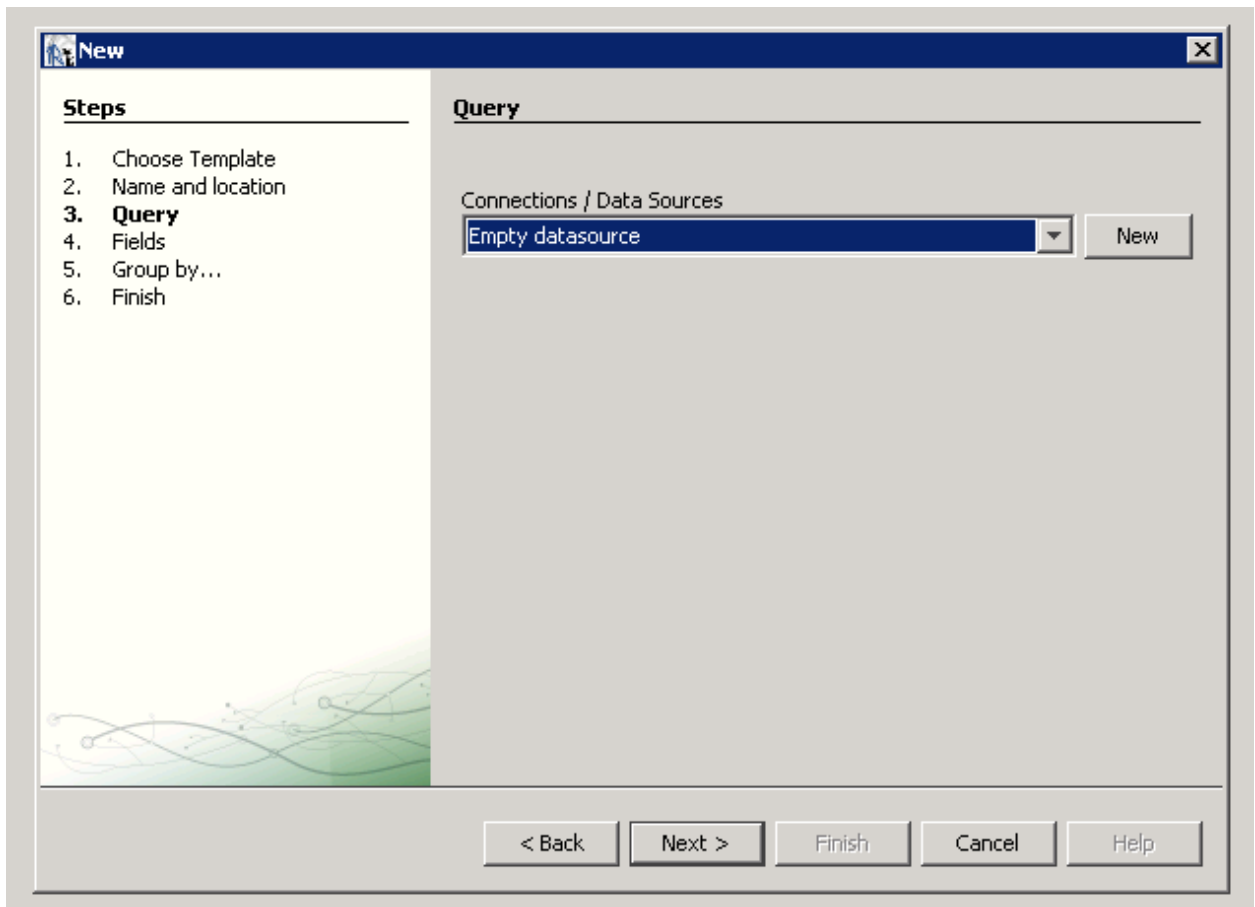


5. Enter the report name into the **Report name** field.

The default location in the **Location** field is your desktop. You can click the **Browse** button to select another location to store the template. The .jrxml file is always saved to the same folder as the template.

6. Click **Next**.

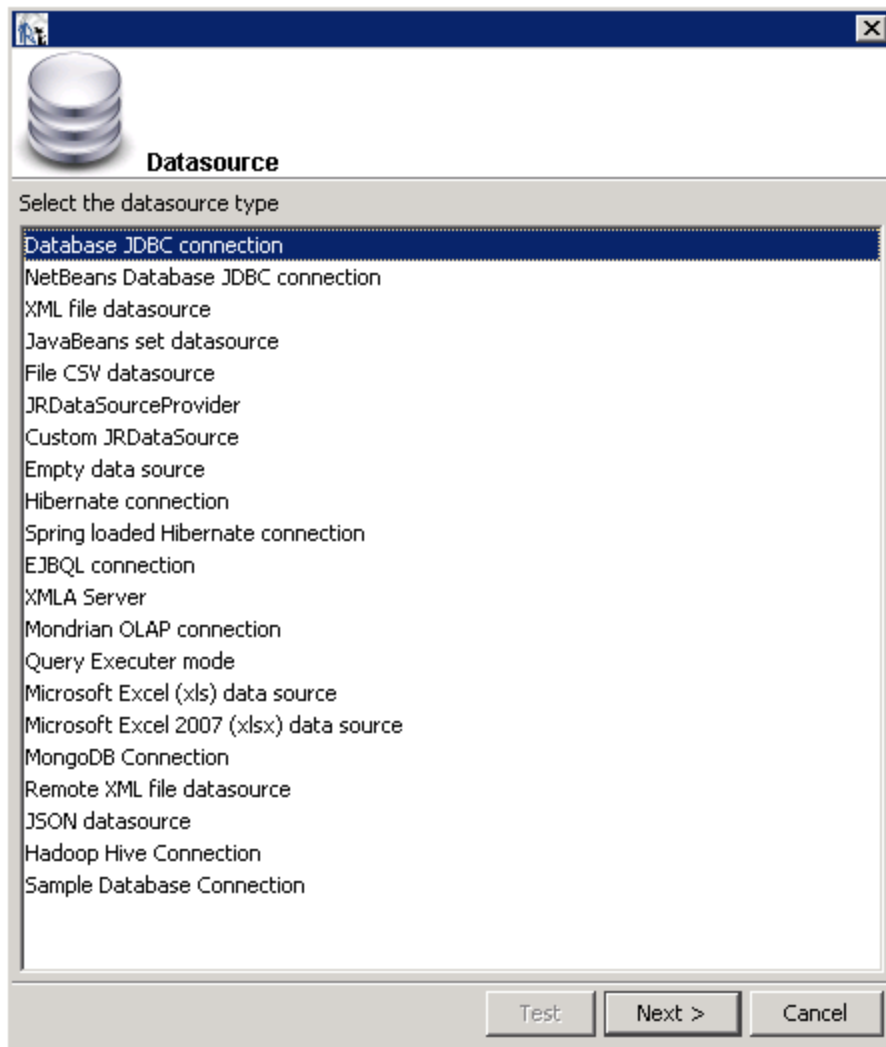
The **Query** dialog box appears.



7. Do one of the following.

- Select an existing data source from the **Connections / Data Sources** pull-down menu.
- Click **New** to create a new connection/data source, if no connections/data sources are available.

If you clicked **New**, the **Datasource** dialog box appears.



8. Select the **Database JDBC connection** data source type.

9. Click **Next**.

The **Database JDBC connection** dialog box appears.

Database JDBC connection

Name

JDBC Driver

JDBC URL

Credentials

Username

Password

Save password

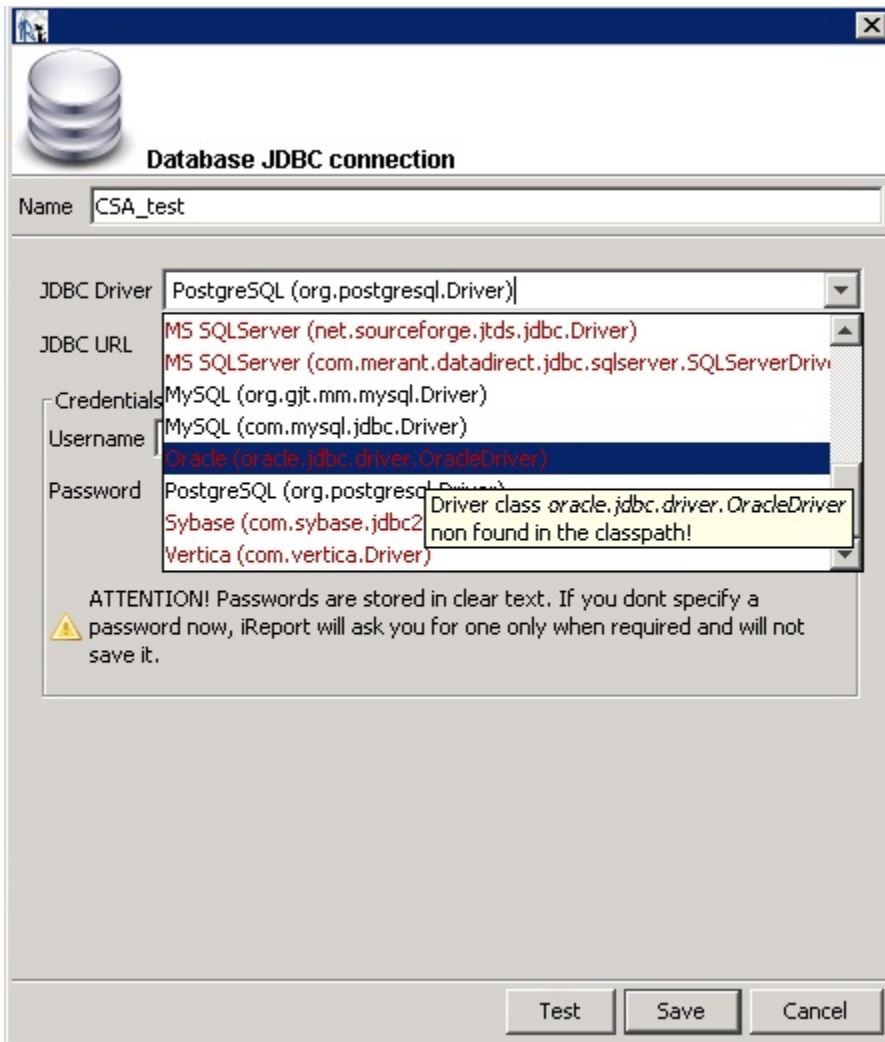
ATTENTION! Passwords are stored in clear text. If you dont specify a password now, iReport will ask you for one only when required and will not save it.

Test Save Cancel

10. Fill in the dialog box as follows:

- **Name**
- **JDBC Driver**
Select the correct driver for your database.
- **JDBC URL**
- **Username**
- **Password**

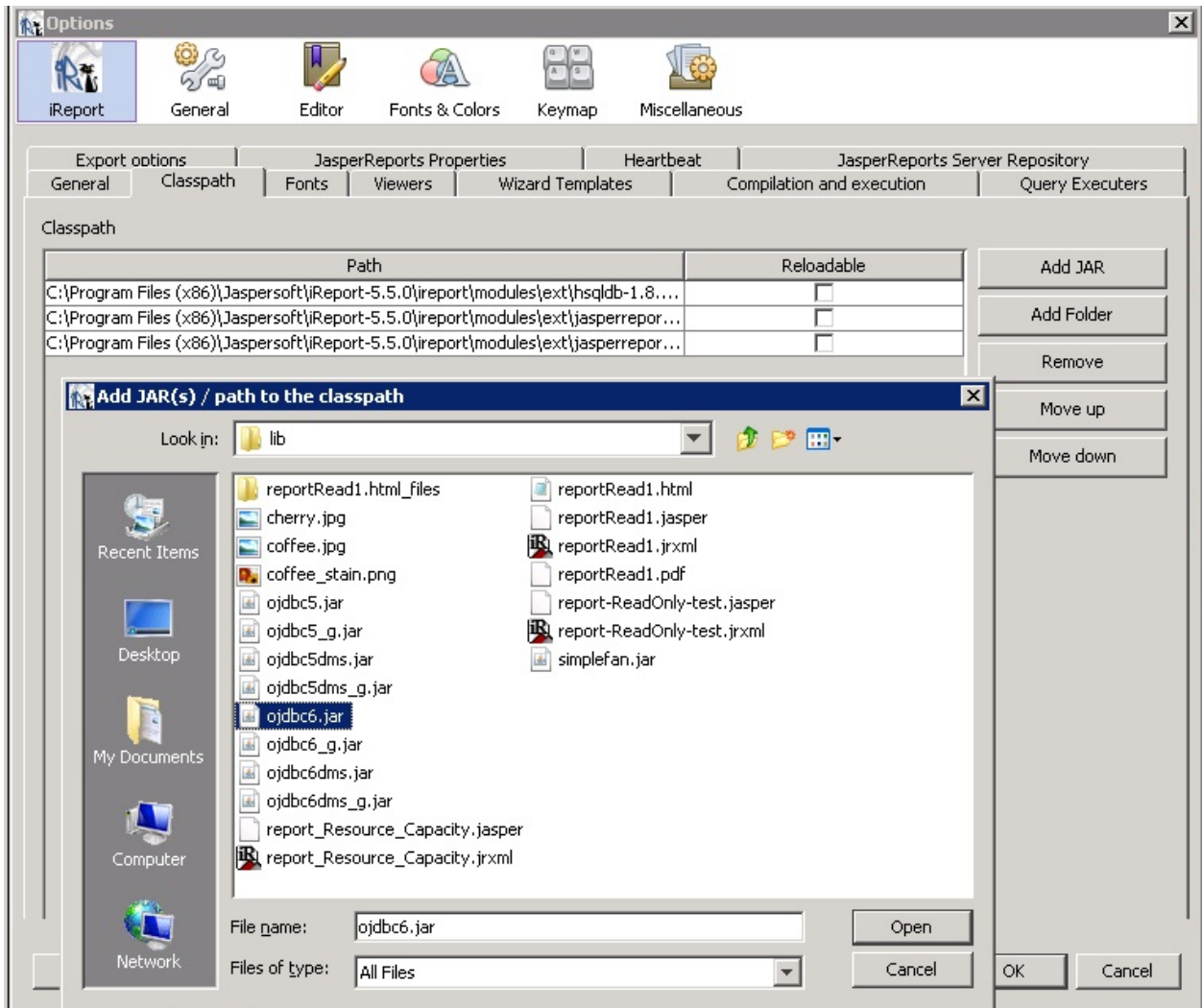
If the driver for your database is not available, it appears in red, which means that it is not in the classpath.



11. If the driver is not available, select **Tools** → **Options** → **Classpath** → **Add JAR** from the menu bar.

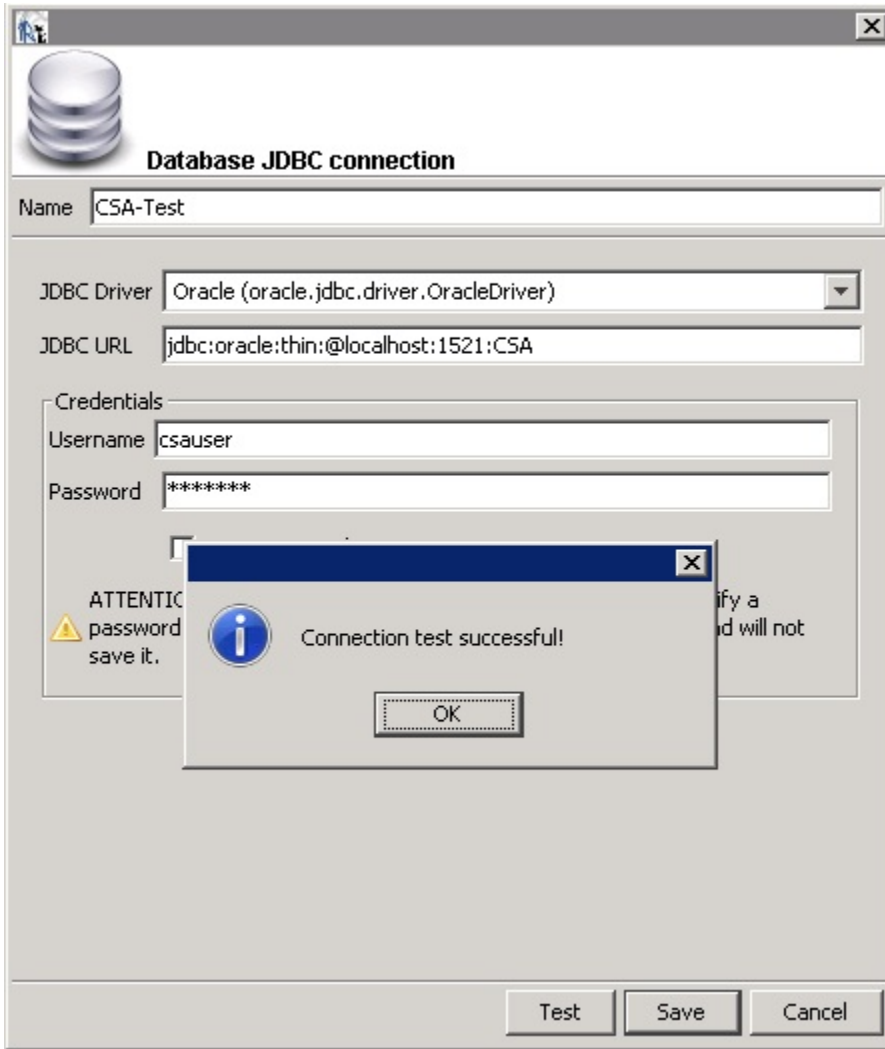
Creating Reports

12. Add the driver to the classpath as in the following dialog box.



13. Click **Test** to validate your username and password with the database.

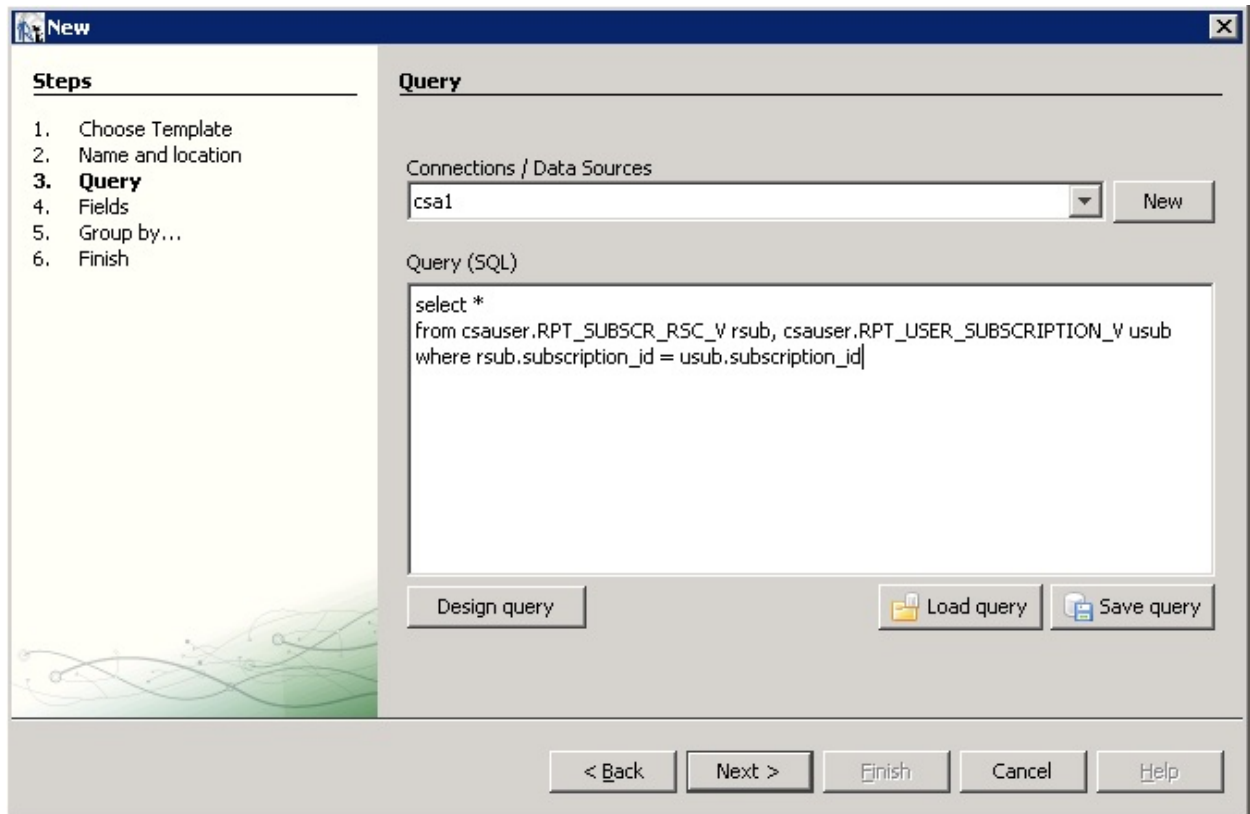
A popup appears if the test is successful.



14. Click **OK**.

15. Click **Save**.

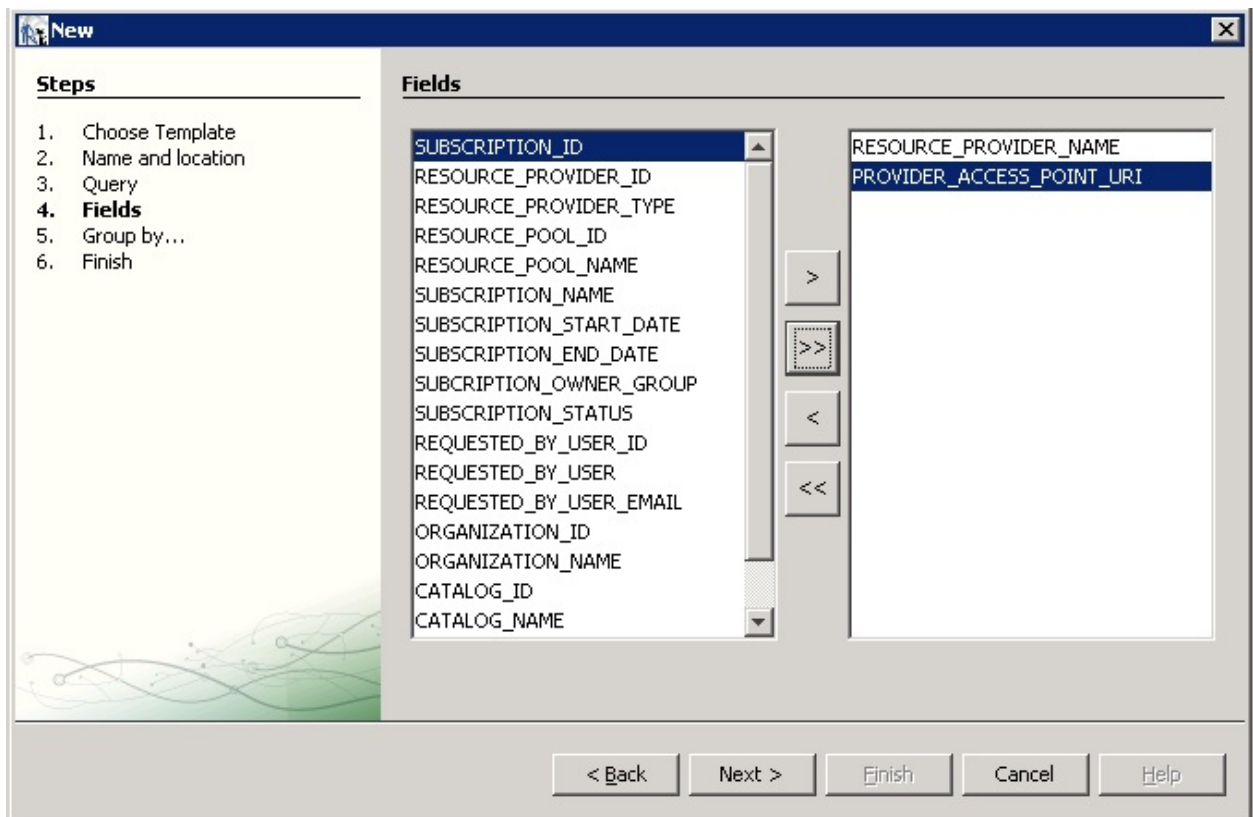
The **Query** dialog box appears.



16. Click **Design query**.
17. Use the query editor to design a query and click **OK**.

18. Click **Next**.

The **Fields** dialog box appears.



19. Use the arrow buttons to select the fields to appear in the report.

20. Click **Finish**.

The template appears in the Designer format.

21. (Optional) Rearrange the order of the columns (fields) in the report and modify the formatting (such as right- or left-justified) for the title, field, and column names.

22. Preview the report by clicking the **Preview** tab.

Following is a preview of a report.

The screenshot shows a web browser window with the title 'ProviderSubscriptionReport.jrxml'. The browser's address bar is empty, and the page content is a report titled 'Subscriptions by Provider'. The report is presented in a table format with the following columns: Access Point, Provider Type, Resource Pool, Subscription, Start Date, and End Date. The data is grouped into two sections: 'Sunnyvale vCenter' and 'Fort Collins vCenter'. The HP logo is visible in the bottom left corner of the report content area. The footer of the report indicates the date 'Wednesday 20 November 2013' and 'Page 1 of 1'.

Access Point	Provider Type	Resource Pool	Subscription	Start Date	End Date
Sunnyvale vCenter					
https://localhost:443	VMware vCenter	RnD Pool	Windows server subs	2013-11-01 08:00:00.0	null
https://localhost:443	VMware vCenter	RnD Pool	QA Subscription	2013-11-01 08:00:00.0	null
https://localhost:443	VMware vCenter	RnD Pool	Snow White Program	2013-11-01 08:00:00.0	null
Fort Collins vCenter					
http://test	VMware vCenter	Finance Pool	Customer POC #156	2013-11-01 08:00:00.0	null

Install and Configure JasperReports Server for Use with HP CSA

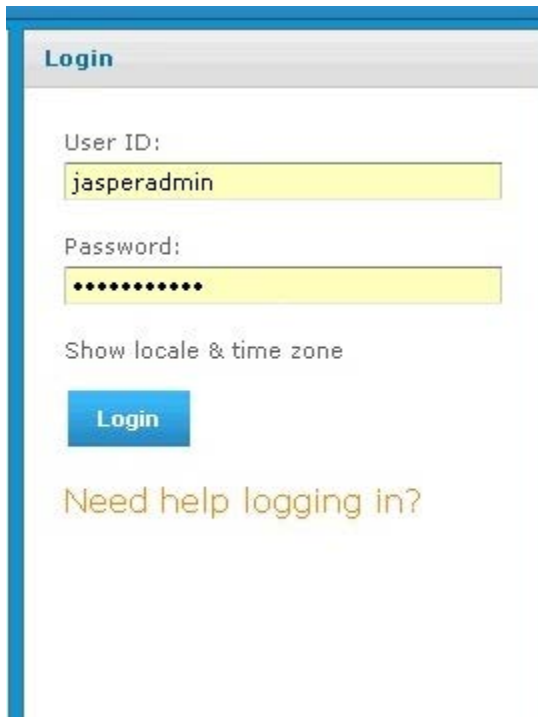
1. Install JasperReports Server by following the instructions at <http://community-static.jaspersoft.com/sites/default/files/docs/jasperreports-server-install-guide.pdf>
2. Go to the JasperReports Server login page at <http://localhost:8082/jasperserver/login.html>

Creating Reports

3. Enter the following login credentials:

User ID: jasperadmin

Password: jasperadmin



Login

User ID:
jasperadmin

Password:
••••••••••

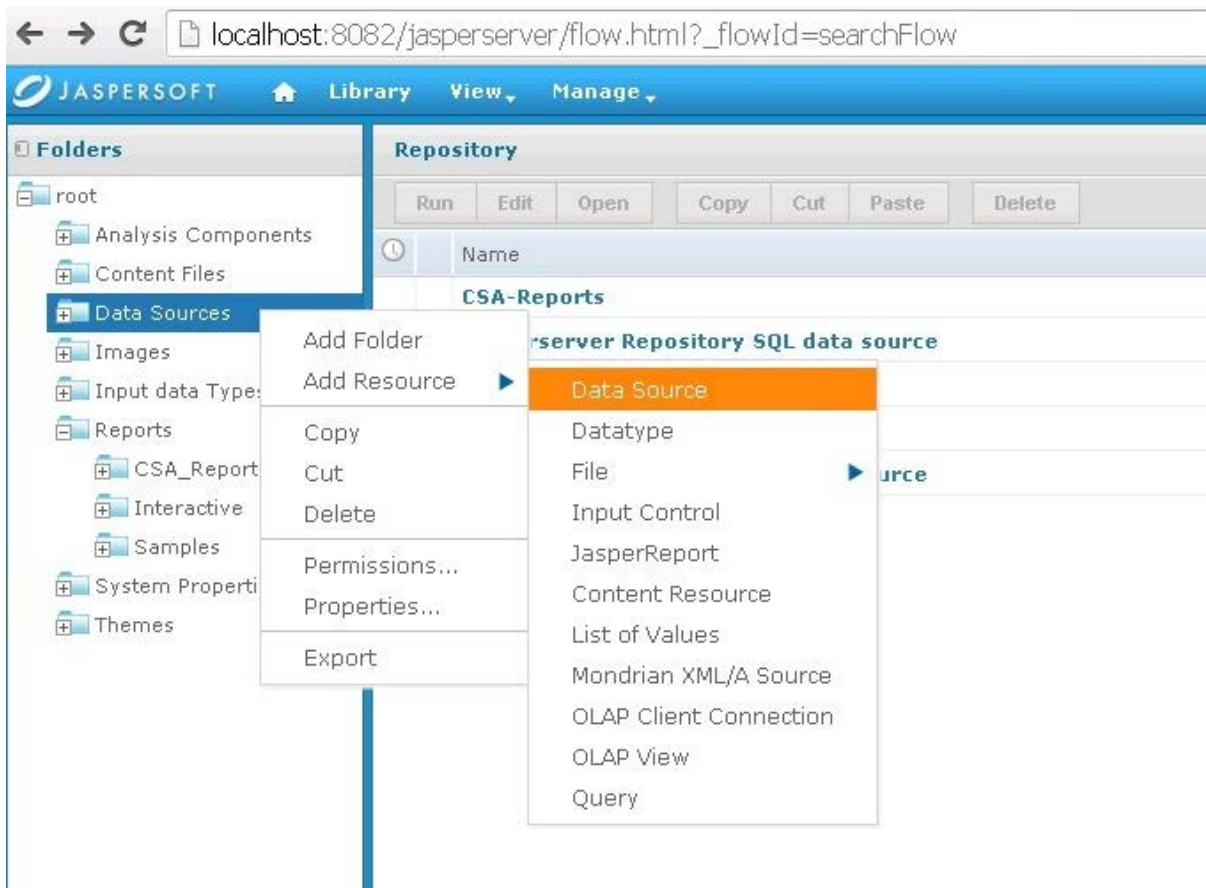
[Show locale & time zone](#)

Login

[Need help logging in?](#)

4. Click **View** → **Repository**.

5. Right-click the **root/Data Sources** folder and select **Add Resource** → **Data Source**.



The **Add Data Source** dialog box appears.

JASPERSOFT [Library](#) [View](#) [Manage](#)

Add Data Source

Set Data Source Type and Properties

First, select the type of data source you wish to add, then enter the required property values.

Type:

Name (required):

Resource ID (required):

Description:

JDBC Driver: [Edit Driver...](#)

Host (required):

Port (required):

Database (required):

URL (required):

User Name (required):

Password:

Time Zone: [Hint: Do not change the time zone setting unless you know the database timestamp data is incorrect.](#)

Save Location (required):

[Save](#) [Cancel](#)

6. Enter information into the following fields:

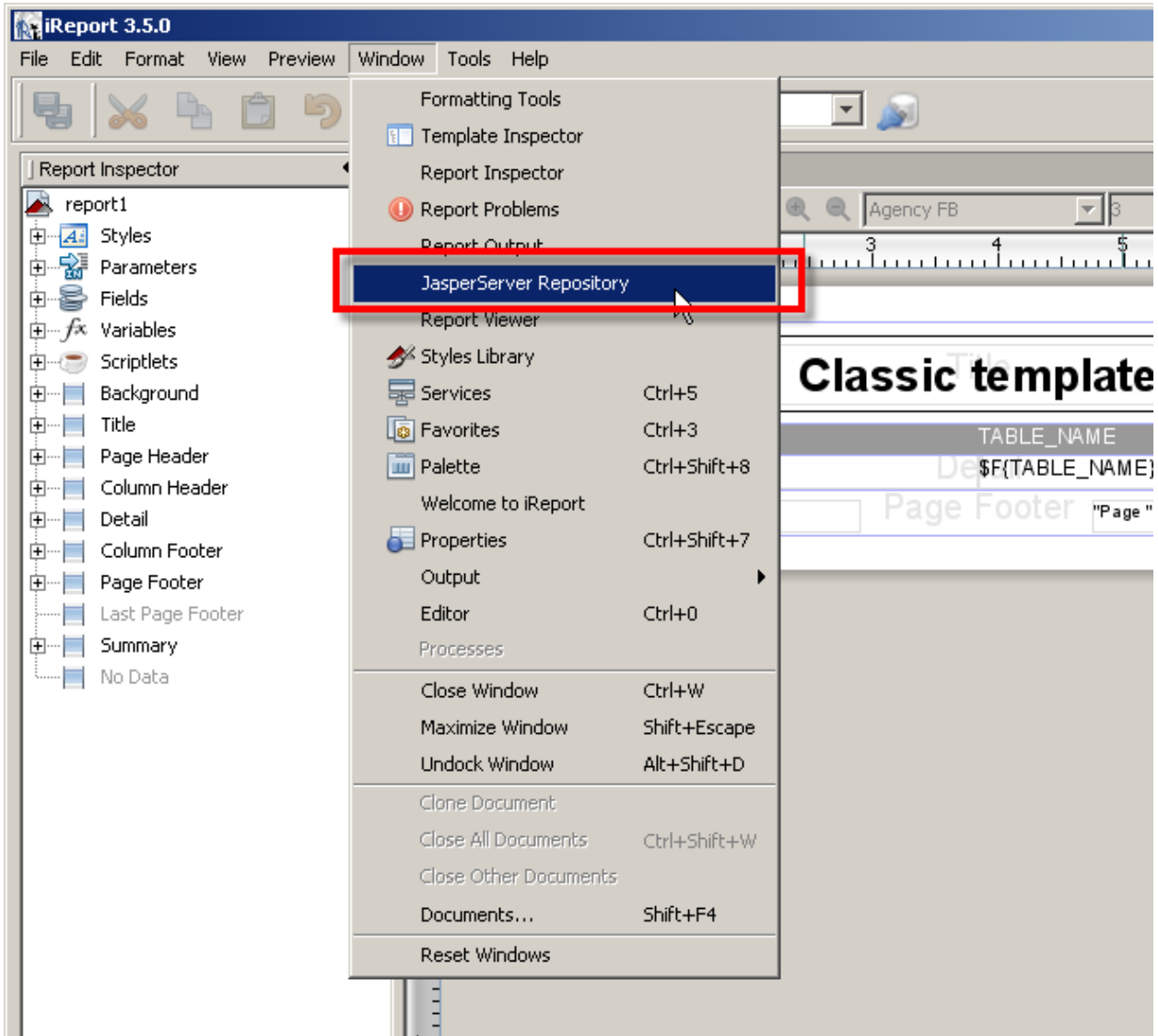
- **Type** of data source
Select **JDBC Data Source** (this is required for the databases supported by HP CSA 4.0).
- **Name** of your choice
- **Resource ID** of your choice

- (Optional) **Description**
 - **JDBC Driver** of the installed database
If the driver is not in the list, you can add the Java archive (JAR) file by using the **Edit Driver** option.
 - **Host** where the database is installed
Enter `localhost` if the database is on your local system.
Enter the IP address of the system, if your database is installed on another system. (To find the hostname, log in to that system and enter the `hostname` command from a command prompt.)
 - **Port** number
 - **Database** name
 - **URL**
Using your hostname and database name, modify the URL as follows:
`jdbc:postgresql://<host>:5432/<dbname>`
By default, the URL is `jdbc:postgresql://localhost:5432/dbname`.
 - **User Name**
Enter the same username as for JasperReports Server.
 - **Password**
Enter the same password as for JasperReports Server.
7. Click **Save** to save the data source.

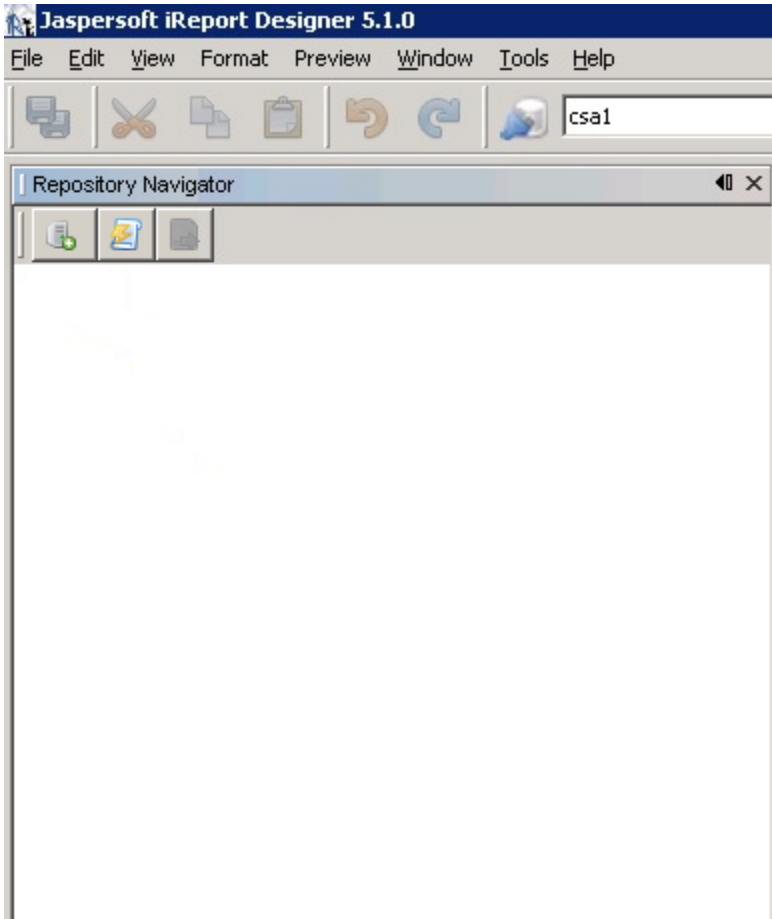
Deploy a Report in JasperReports Using the iReport Designer


In this procedure, you deploy a report to the server. First, you connect iReport to the repository.

1. Select **Window** → **JasperServer Repository**.

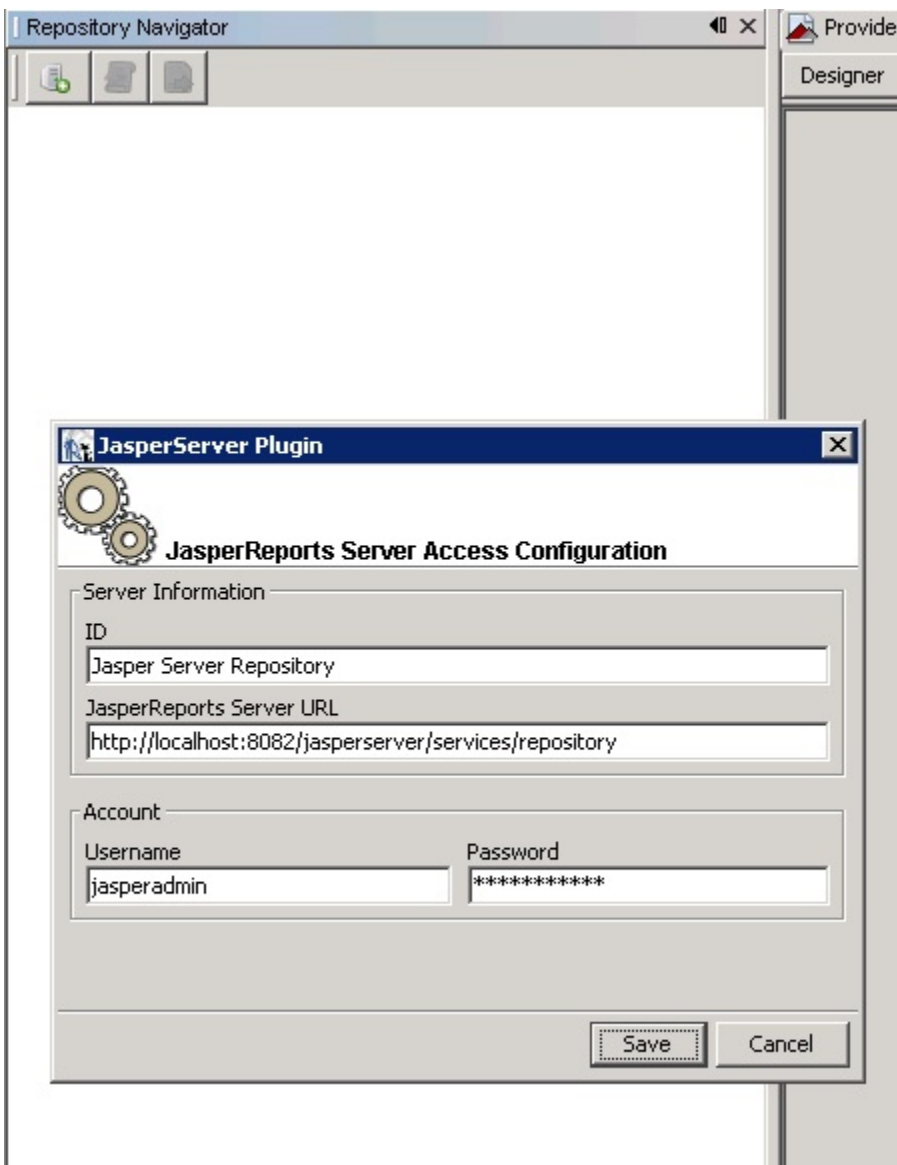


The **Repository Navigator** pane appears.



2. Click the  button to create a new server.

The **JasperServer Plugin** dialog box appears.



3. Enter values into the following fields for your JasperReports Server:

- **ID** of the server

You can enter any name of your choice. Enter a name that is meaningful.

- **JasperReports Server URL**

The default value for **JasperReports Server URL** is

<http://localhost:8080/jasperserver/services/repository>

If you are using the same URL for JasperReports, then keep the URL as is; otherwise, replace it.

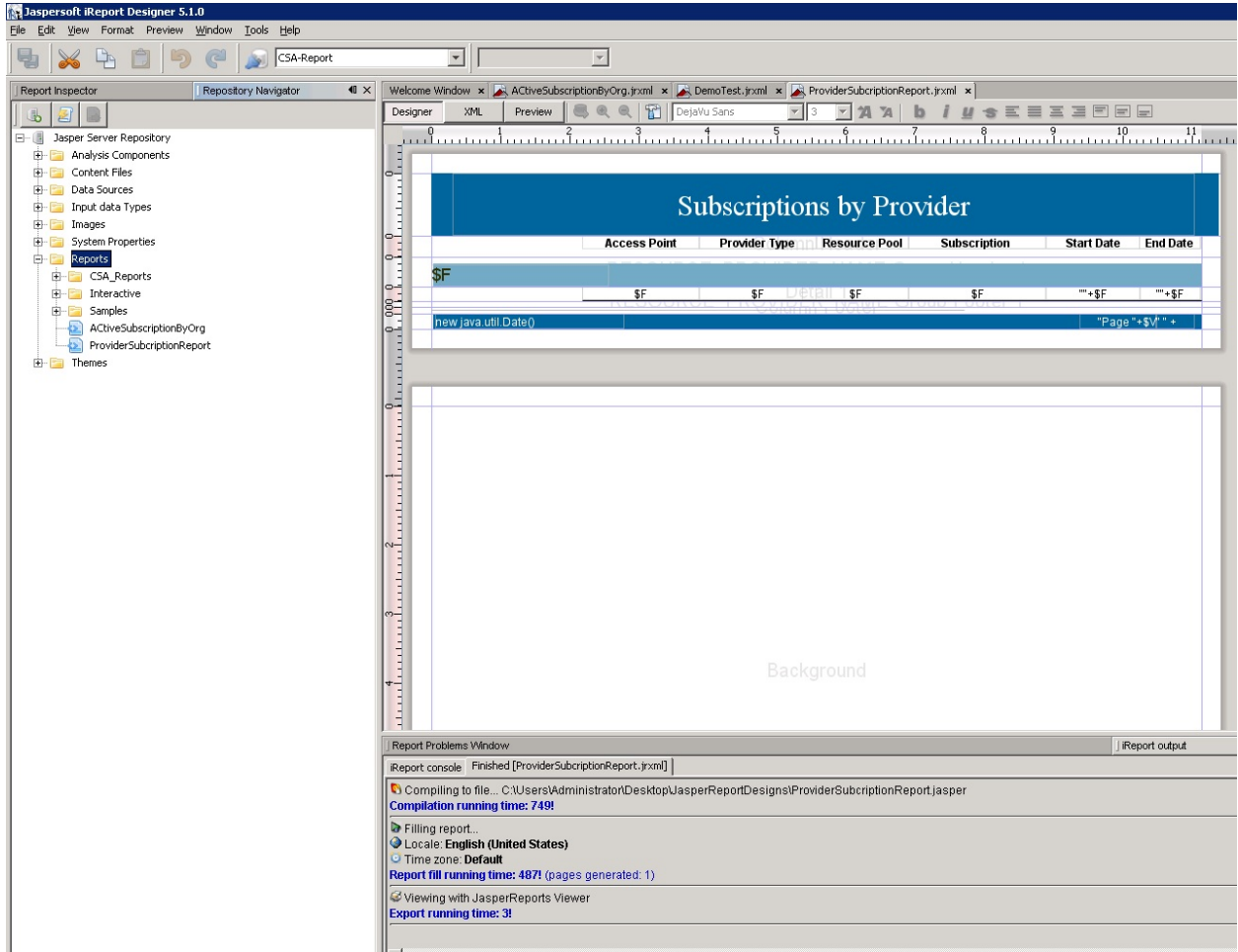
- **Username**

Creating Reports

- **Password**

4. Click **Save**.

Jaspersoft iReport Designer retrieves the information from the server. The Repository Navigator appears as follows.



Define the Data Source for a Report

You must define the data source for a report. For previewing, the local data source is used, but to display the report from the server, you must define a data source on the server as well.

1. Select the **Data Sources** folder in the Repository Navigator pane.

2. Right-click **Add** → **Data Source**.

The **Data Source** dialog box appears.

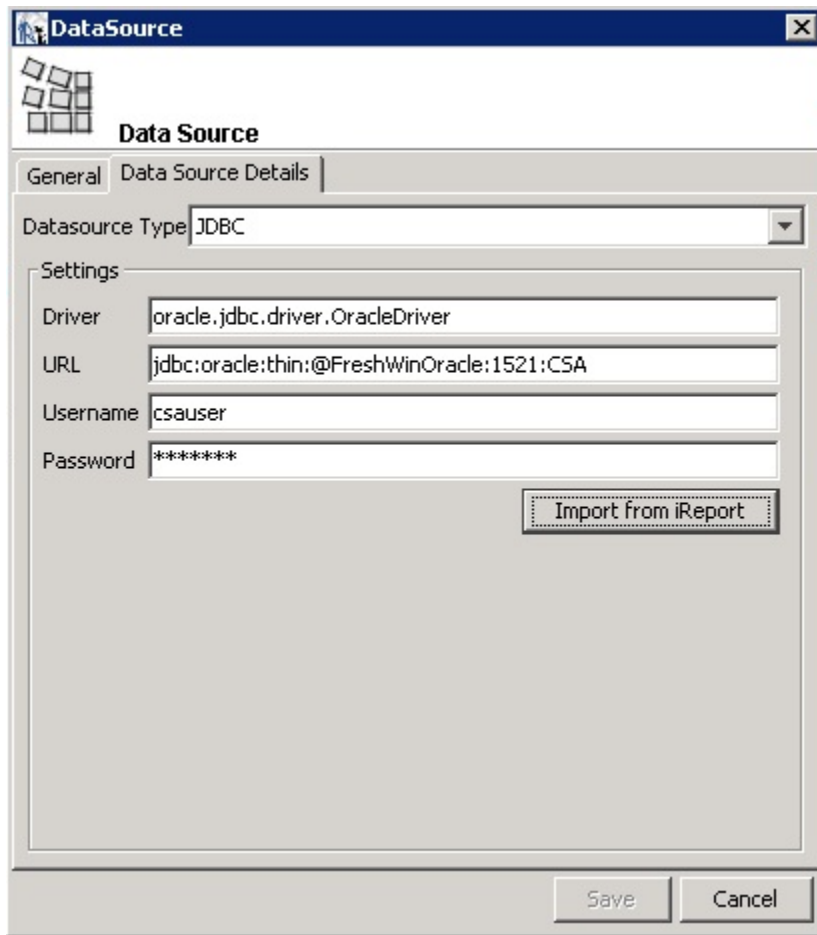
The screenshot shows a dialog box titled "DataSource" with a close button (X) in the top right corner. Below the title bar is a grid icon and the text "Data Source". The dialog has two tabs: "General" (selected) and "Data Source Details". The "General" tab contains a "Parent Folder" field with the value "/datasources", an "ID" text box, a "Name" text box, and a "Description" text area. At the bottom right are "Save" and "Cancel" buttons.

3. Enter values into the following fields for your data source:

- **ID**
For example, JRServer.
- **Name**
For example, SRServerDataSource.
- (Optional) **Description**

4. Click the **Data Source Details** tab.

If you select a JDBC data source, you can click the **Import from iReport** button to help provide these details. Select the local data source that you specified during report design.



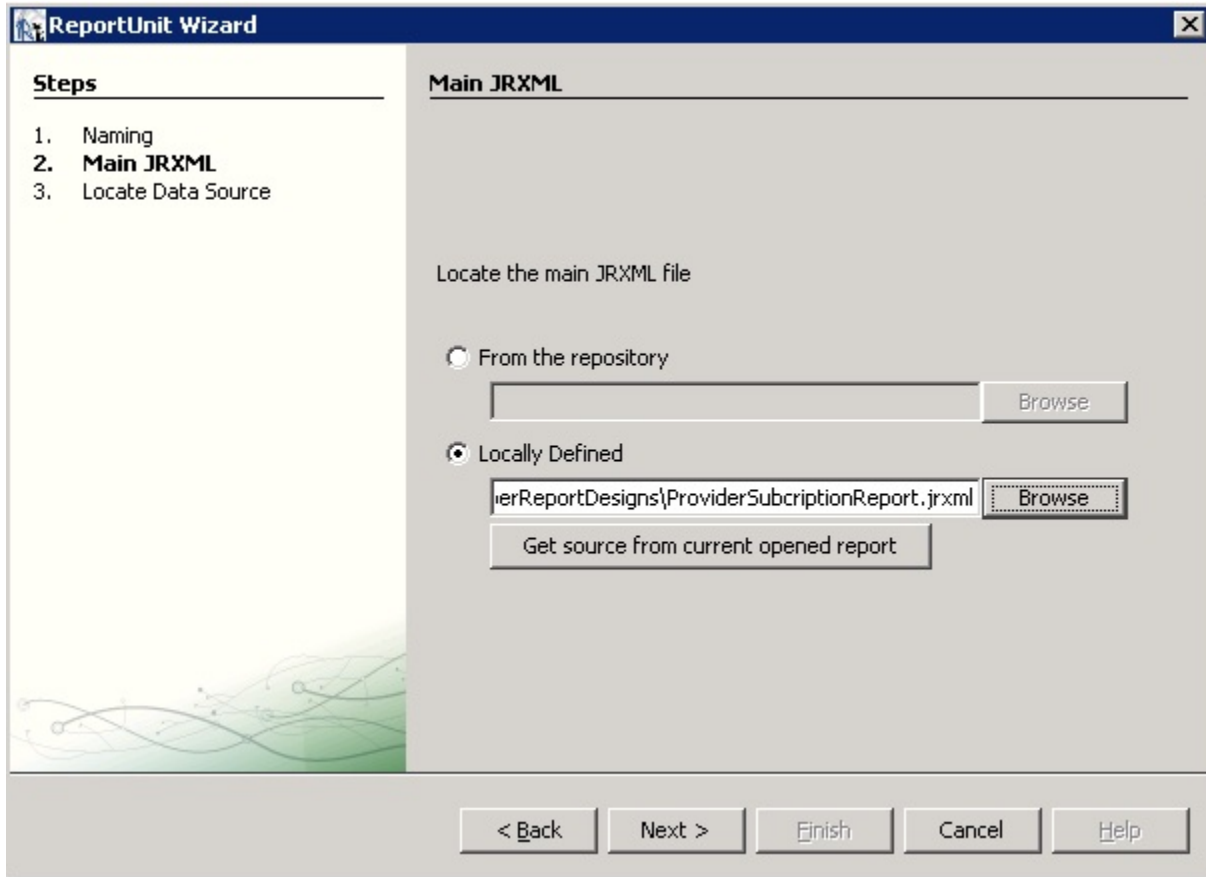
5. Click **Save**.

The list of reports in the Repository Navigator pane corresponds to the list that appears on the webpage.

6. Create a folder named **CSA_Reports** under the **Reports** folder.
7. Right-click the **CSA_Reports** folder.
8. Select **Add** → **Report**.
9. Enter the name, label, and description for the report.
10. Click **Save**.

11. Click **Browse** to browse to and select a .jrxml file (for example, ProviderSubscription.jrxml) and select it.

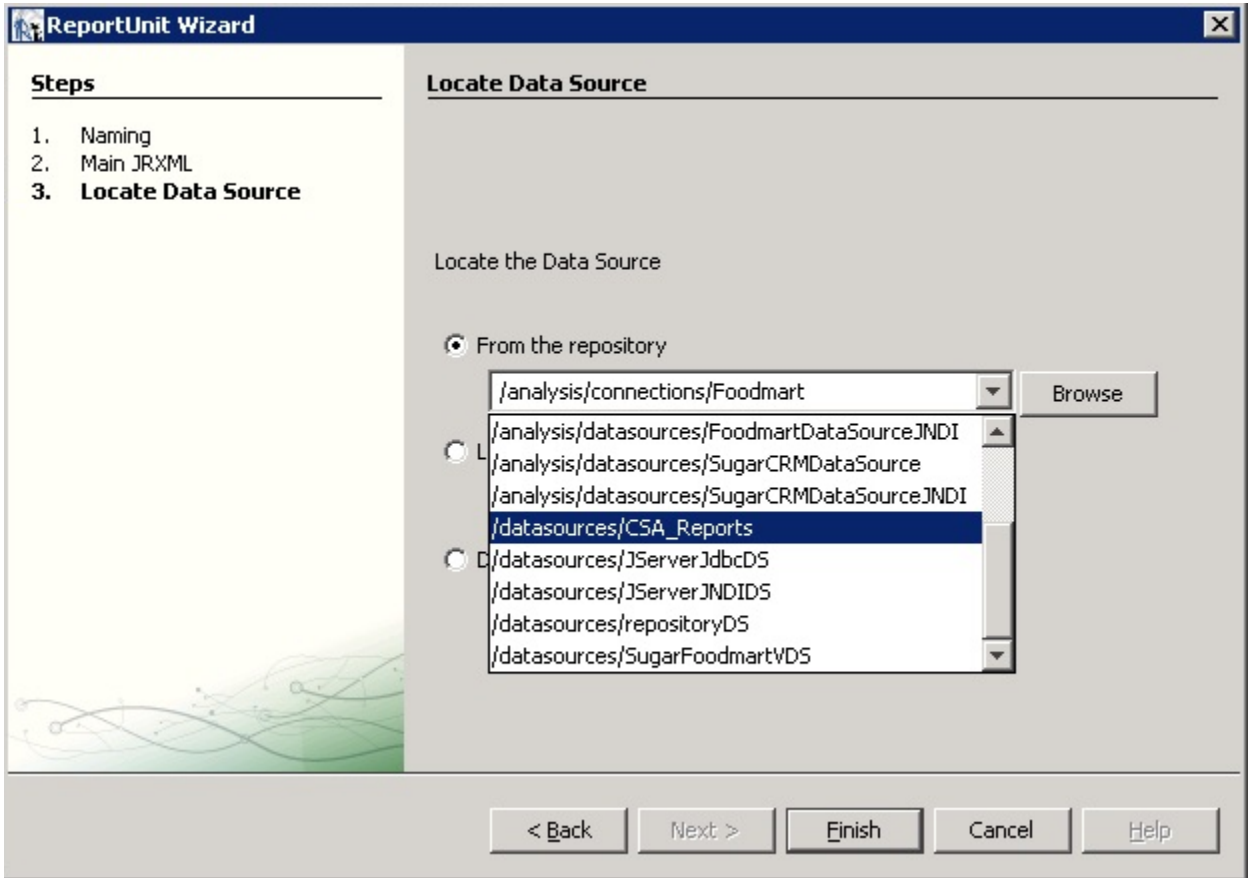
This is the JasperReports report template file that was generated when you created the template.



12. Click **Next**.

13. Select a data source from the available data sources.

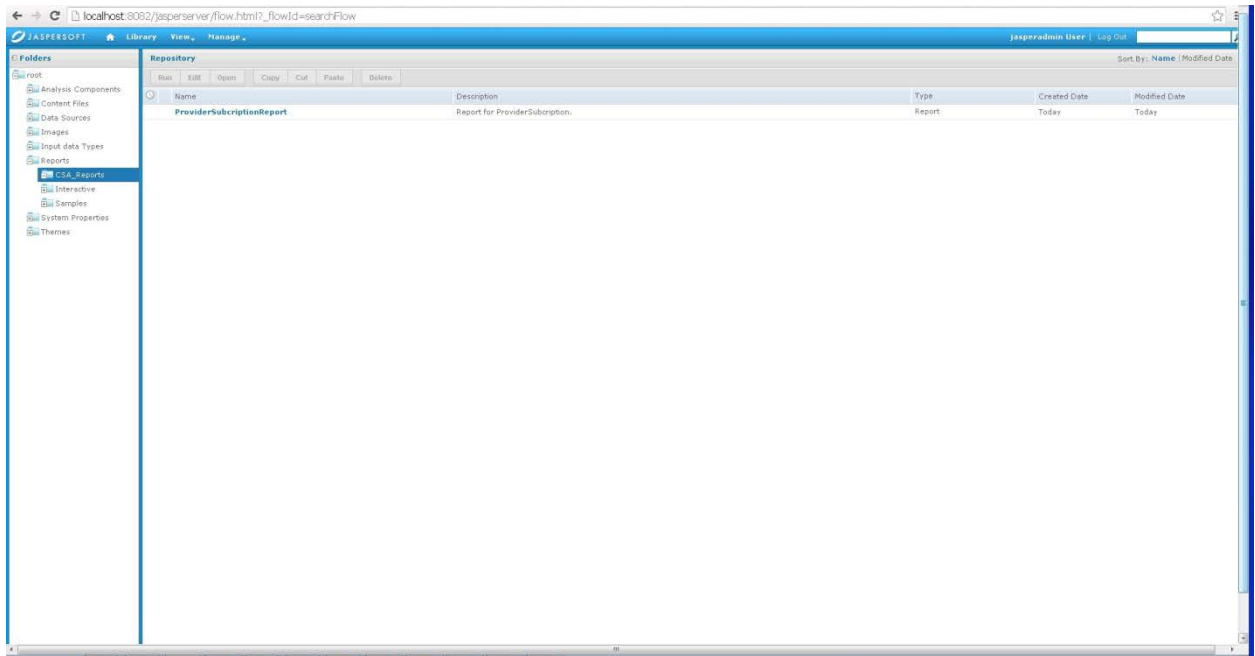
The following figure uses /datasources/CSA_Reports as an example data source.



Creating Reports

14. Click **Finish**.

The report is now available from the website.



You can now preview the report.

