

HP Configuration Management Settings Migration Manager

for the Windows® operating system

Software Version: 5.00

System Administrator Guide

Manufacturing Part Number: T3424-90155

Document Release Date: October 2007

Software Release Date: October 2007



Legal Notices

Warranty

The only warranties for HP products and services are set forth in the express warranty statements accompanying such products and services. Nothing herein should be construed as constituting an additional warranty. HP shall not be liable for technical or editorial errors or omissions contained herein.

The information contained herein is subject to change without notice.

Restricted Rights Legend

Confidential computer software. Valid license from HP required for possession, use or copying. Consistent with FAR 12.211 and 12.212, Commercial Computer Software, Computer Software Documentation, and Technical Data for Commercial Items are licensed to the U.S. Government under vendor's standard commercial license.

Copyright Notices

© Copyright 2007 Hewlett-Packard Development Company, L.P.

Trademark Notices

Linux is a registered trademark of Linus Torvalds.

Microsoft®, Windows®, and Windows® XP are U.S. registered trademarks of Microsoft Corporation.

OpenLDAP is a registered trademark of the OpenLDAP Foundation.

PREBOOT EXECUTION ENVIRONMENT (PXE) SERVER
Copyright © 1996-1999 Intel Corporation.

TFTP SERVER

Copyright © 1983, 1993

The Regents of the University of California.

OpenLDAP

Copyright 1999-2001 The OpenLDAP Foundation, Redwood City, California, USA.
Portions Copyright © 1992-1996 Regents of the University of Michigan.

OpenSSL License

Copyright © 1998-2001 The OpenSSLProject.

Original SSLeay License

Copyright © 1995-1998 Eric Young (eay@cryptsoft.com)

DHTML Calendar
Copyright Mihai Bazon, 2002, 2003

Documentation Updates

This guide's title page contains the following identifying information:

- Software Version number, which indicates the software version
- Document release date, which changes each time the document is updated
- Software release date, which indicates the release date of this version of the software

To check for recent updates or to verify that you are using the most recent edition, visit the following URL:

ovweb.external.hp.com/lpe/doc_serv/

You will also receive updated or new editions if you subscribe to the appropriate product support service. Contact your HP sales representative for details.

Support

You can visit the HP Software support web site at:

www.hp.com/go/hpsoftwaresupport

This web site provides contact information and details about the products, services, and support that HP Software offers.

HP Software online software support provides customer self-solve capabilities. It provides a fast and efficient way to access interactive technical support tools needed to manage your business. As a valued support customer, you can benefit by using the support site to:

- Search for knowledge documents of interest
- Submit and track support cases and enhancement requests
- Download software patches
- Manage support contracts
- Look up HP support contacts
- Review information about available services
- Enter into discussions with other software customers
- Research and register for software training

Most of the support areas require that you register as an HP Passport user and sign in. Many also require an active support contract. To find more information about support access levels, go to the following URL:

http://h20230.www2.hp.com/new_access_levels.jsp

To register for an HP Passport ID, go to the following URL:

<http://h20229.www2.hp.com/passport-registration.html>

Contents

1	Introduction	15
	What is a Computer Personality?	16
	The Desktop Interface.....	16
	Application Settings.....	16
	Internet and Email.....	16
	Documents and Data Files	16
	CM Settings Migration Manager Supported Applications and Settings	17
	Microsoft Office Supported Applications	17
	Other Supported Applications.....	18
	Windows Options	18
	Control Panel (Settings)	19
	The Advantages of CM Settings Migration Manager.....	20
	Using CM Settings Migration Manager with Disk Imaging Software	20
	Moving Applications in a PC Migration	20
2	Migration Overview.....	23
	Migration Project Considerations.....	24
	Using CM Settings Migration Manager on a Network	24
	Extraction and Injection Flexibility	25
	Using CM Settings Migration Manager One-on-One.....	25
	Migrating Users that are not the Currently Logged In User	25
	Multi-Profile Environments	26
	CM Settings Migration Manager and Disk Partitions	26
	Examples for Directory Creation and Drive Letter Recognition.....	27
	Printer Considerations	27

3	Extracting using CM Settings Migration Manager	29
	Extraction Overview.....	30
	Configuration Files.....	30
	The Data Store.....	31
	File Rules	31
	Log File Detail Level	31
	Configuration File Search Rules.....	32
	Before Running CM Settings Migration Manager on a PC to Be Extracted	32
	Extract Personality View	32
4	Injecting Using CM Settings Migration Manager	37
	Injection Overview.....	38
5	OV Setting Migration Manager Interface.....	41
	CM Settings Migration Manager Menus and Toolbar	43
	File Menu.....	43
	Edit Menu	43
	View Menu.....	44
	Help Menu	44
	CM Settings Migration Manager Toolbar	45
	Users to Extract View	45
	Select For Extraction View	47
	Extraction Information.....	48
	Users to Extract	48
	Select for Extraction	48
	Extract	49
	Users to Inject View	49
	Select for Injection View.....	51
	Injection Information.....	52
	Personalities	52
	Users to Inject	52

User Destination	52
Select for Injection	53
Inject	53
Edit → Preferences Menu	53
Policies.....	53
Extraction Policies	54
Exclude User's Temporary Directory or Exclude User's Temporary Internet Directory.....	55
Require Password Protection.....	55
Disable Compression	55
Injection Policies	55
Migrate Broken Shortcuts.....	56
Created Accounts Get Local Administrator Rights.....	56
Migrate Administrative Rights.....	56
Prevent Injection to the Following Disks.....	56
Allow Injection to Network Locations	57
Redirect PST Files.....	58
File Replacement Rules	58
Always Replace	58
Replace If Newer.....	59
Never Replace	59
“Restore Files” Ignores File Replacement Rules	59
Log File.....	59
Log File Information.....	60
Log File Sections.....	61

6 Using File and Registry Rules..... 63

File Rules	64
Accessing File Rules.....	64
Export and Import File Rules.....	66
File Rule Dialog Box	68
Include/Exclude	69
Source Path.....	69
Specify Multiple File Types in the Source Path	69
Specify Multiple File Types Using "Import File Rules"	70
The Use of Wildcard Syntax in the Source Path.....	71
Using Token Substitution in File Rules	72
Include Subdirectories	73

Exceptions by File Date and Size.....	73
Remapping Files and Folders.....	74
Files Are Only Copied Once.....	75
File Tree	75
File Type Selection with File Tree	77
Registry Rules.....	77
Registry Rule Definitions	78
7 Back up Personality Changes and Restore Files	81
Backup Changes	82
Backup Changes and Password Protected Personalities	82
Backup Changes Process (User Interface)	82
Backup Changes Process (Automation)	85
Sample “Personality Backup” Command Lines	86
Restore Files	86
Restore Files and Password Protected Personalities.....	87
Restore Files Process	87
Redirect Files during File Restore	88
File Search.....	90
Browse HTTP Personalities	91
8 Command Line Interface	95
Overview.....	96
Automating Personality Migrations	96
CM Settings Migration Manager Application Command Line Switches.....	97
/AUTOEXTRACT (Extraction Only).....	97
/AUTOINJECT (Injection Only).....	97
/PASSWORD	97
/CONFIG.....	98
/IMPORT (Extraction Only)	99
/SOURCE (Injection only).....	99
/INCLUDEUSER (Extraction)	99
/INCLUDEUSER (Injection)	100

/ALLUSERS (Extraction)	101
/ALLUSERS (Injection).....	101
/EXCLUDEUSER (Extraction).....	102
/EXCLUDEUSER (Injection).....	102
/EXCLUDELOCAL (Extraction)	102
/EXCLUDELOCAL (Injection)	103
/EXCLUDEUNUSED (Extraction Only)	103
/DOMAIN (Injection Only)	103
/DATASTORE.....	104
/EXCLUDEDISKS (Injection Only)	105
/INJECTTOLOGGEDINUSER (Injection Only)	105
/AUTOBACKUP (Personality Backup Only).....	106
/EXCLUDEDOMAIN	106
/NOCANCEL	106
/HIDESTATUS	107
HTTP Command Line Usage	107
Command Line Definitions	107
/HTTPDIR.....	108

A Response Files 109

Using Response Files with CM Settings Migration Manager Automation	109
Response File Example.....	109

B Exit Codes 111

Using Exit Codes with CM Settings Migration Manager Automation	111
CM Settings Migration Manager Application Event Exit Codes.....	111
Applying Exit Codes to Batch Files.....	116
Example Batch File Incorporating CM Settings Migration Manager Exit Codes	116
Extraction Batch File with Exit Codes	116

C Application Support Notes 119

Microsoft Office Supported Applications.....	119
Other Supported Applications	119

Windows Options	120
Control Panel (Settings).....	121
Microsoft Office Support Notes.....	122
Microsoft Office	122
Microsoft Access	123
Microsoft Excel	124
Microsoft FrontPage.....	125
Microsoft Groove	126
Microsoft InfoPath	126
Office Assistant Settings	127
Office Shortcut Bar	127
Microsoft OneNote	127
Microsoft Outlook.....	127
Microsoft PowerPoint.....	129
Microsoft Project	130
Microsoft Publisher	131
Microsoft Word	131
Other Supported Application and Operating System Notes.....	132
Act! 2000	133
Adobe Acrobat	133
MSN Messenger	134
Yahoo Messenger.....	134
Lotus Notes 5.x, 6.x.....	134
Microsoft Internet Explorer.....	135
Microsoft NetMeeting	135
Microsoft Outlook Express	136
Mozilla Firefox.....	136
Netscape.....	136
Norton Antivirus	137
Norton AntiVirus Corporate Edition	137
Visio.....	138
WinZip.....	138
WordPerfect Office 2000	139
Dragon NaturallySpeaking For WordPerfect.....	139
Corel Utilities	140
Corel Quattro Pro.....	140
Corel WordPerfect	140

Data Transport.....	140
Windows Options.....	141
Desktop Shortcuts.....	141
Dial-Up Networking.....	141
Folder Options.....	141
Local Printer Logging.....	141
Mapped Network Drives.....	142
Network and Shared Printer Connections.....	142
Taskbar and Quick Launch Bar.....	142
User Documents and Media Files.....	142
My Documents.....	142
My Music.....	143
My Pictures.....	143
My Videos.....	143
Windows Address Book.....	143
Control Panel.....	143
Accessibility Options.....	143
Display.....	143
Internet Options.....	144
Keyboard.....	144
Mouse Settings.....	144
Power Management.....	144
Regional Settings.....	144
Sounds.....	145
Time Zones.....	145

Index.....	147
------------	-----

1 Introduction

After a period of time, a computer starts to reflect the personality and choices of the person using it. For example, email, application settings, browser settings and favorites, custom Word dictionaries, and many other settings are reflected in the overall state of the computer. Until now, most of this data or personality was lost when switching computers or upgrading to a new operating system.

CM Settings Migration Manager captures computer personalities, keeps them organized, and then allows these personalities to be injected into a new computer. CM Settings Migration Manager also has the capability of performing personality backups and restoring individual files contained in a personality.

What is a Computer Personality?

The components that define a computer personality comprise both the end-user's and the company's customization choices. These include the desktop interface, email, application settings, and the user's documents and data files.

The Desktop Interface

The Windows operating system is rich with options that allow users to personalize their environments. These include wallpaper, sounds, display settings, shortcuts, and much, much more. In short, the Desktop Interface defines how users interact with their computers and is a key component in user productivity.

Application Settings

The applications used on a daily basis offer thousands of choices for customization. Not capturing, transferring, or backing up these settings means that the user must reconfigure the new computer.

Internet and Email

Many aspects of business are now routinely handled on the Internet through web browsers and email. Internet-related computer personality items include browser settings, address books, email settings and folders, newsgroup settings, bookmarks, remote access settings, and so forth.

Documents and Data Files

Locating and transferring files during a migration has traditionally been very difficult.

Compounding the problem is the fact that some applications store data files in obscure locations. CM Settings Migration Manager provides extensive built-in support for locating and migrating most common application data files.

Additionally, File Rules technology gives the user advanced capability to locate all additional documents and files and ensure their migration. See Chapter 6, [Using File and Registry Rules](#) for details.

▶ CM Settings Migration Manager also works well with stand-alone computers, either by temporarily networking or connecting the source and target computers directly through their network, serial, parallel or USB ports, or a similar connection to an intermediate, portable computer. Personalities can even be extracted to and injected from removable media, provided the personality data fits on the media unit (disk, tape, and so forth).

CM Settings Migration Manager Supported Applications and Settings

For detailed Application settings and data support for CM Settings Migration Manager see Appendix C, [Application Support Notes](#).

Microsoft Office Supported Applications

- Microsoft Access 95, 97, 2000, XP, 2003, 2007
- Microsoft Excel 95, 97, 2000, XP, 2003, 2007
- Microsoft FrontPage 2000, XP, 2003, 2007
- Microsoft Groove 2007
- Microsoft InfoPath 2003, 2007
- Microsoft OneNote 2003, 2007
- Microsoft Outlook (Windows Messaging), 97, 98, 2000, XP, 2003, 2007
- Microsoft PowerPoint 95, 97, 2000, XP, 2003, 2007
- Microsoft Project 98, 2000, 2002, 2003, 2007
- Microsoft Publisher 2003, 2007
- Microsoft Word 95, 97, 2000, XP, 2003, 2007

Other Supported Applications

- Act! 2000
- Adobe Acrobat 4.x, 5.x, 6
- Acrobat Reader 4.x, 5.x, 6, 7
- MSN Messenger 7.0, 7.5
- Yahoo Messenger 7.0, 7.5, 8
- Lotus Notes 5.x, 6.x
- Microsoft Internet Explorer 4.01, 5.x, 6.x, 7.x
- Microsoft NetMeeting 2.x, 3.x
- Microsoft Outlook Express 5.x, 6.x
- Mozilla Firefox 1.x, 2.x
- Netscape 4.5, 4.6, 4.7, 6.x
- Norton AntiVirus 2000
- Norton AntiVirus Corporate Edition
- Visio 2000, 2002, 2003, 2007
- WinZip 7.x, 8.x, 9.0
- WordPerfect Office 2000
 - Corel Utilities
 - Dragon NaturallySpeaking for WordPerfect
 - Quattro Pro 9
 - WordPerfect 9

Windows Options

- Desktop Shortcuts
- Dial-Up Networking
- Folder Options
- Local Printer Logging
- Mapped Network Drives

- Network and Shared Printer Connections
- Taskbar and Start Menu
 - Quick Launch Bar Shortcuts
 - Taskbar and Start Menu Settings
- User Documents and Media Files
 - My Documents
 - My Pictures
 - My Music
 - My Videos
- Windows Address Book

Control Panel (Settings)

- Accessibility Options
- Display
 - Appearance and Themes
 - Background
 - Visual Effects
- Internet Options
- Keyboard
 - Keyboard Languages
 - Keyboard Settings
- Mouse Settings
 - Buttons and Motions
 - Pointers and Schemes
- Power Management
- Regional Settings
- Sounds
- Time Zones

The Advantages of CM Settings Migration Manager

These Hewlett-Packard products are based on technology that extracts, stores, and transfers a computer personality from one computer to another. At the core of the technology is the personality engine. This unique technology interfaces directly with core OS components, shielding the user from highly complex, low-level tasks such as registry manipulation. The personality engine is capable of capturing and transferring nearly *anything* that can be stored in a persistent manner on a computer. This inherent flexibility means the personality engine will be able to keep pace as new operating systems and applications are developed.

HP also provides a mechanism to describe application or operating system configuration information. This configuration content feeds the personality engine with information on specific applications and operating system settings.

Using CM Settings Migration Manager with Disk Imaging Software

CM Settings Migration Manager can be used alongside disk imaging software in a corporate environment involving upgrades of multiple PCs. Disk imaging software is designed to create baseline images for standard desktops from a master disk image that typically is comprised of an operating system and standard applications.

Disk imaging software duplicates this entire master disk on the target computer, but is incapable of transferring the computer personality from the user's original PC.

Moving Applications in a PC Migration

CM Settings Migration Manager does not move applications from one machine to another. Instead, it moves the settings and data files of those applications. Directly copying applications between machines is not advisable for a number of reasons:

- 1 Copying files is only the tip of the iceberg in installing an application, with the majority of the work actually requiring intense interaction with the operating system to register the application and its resource requirements.

- 2 Implementing a partial installation by copying the applications can often result in unstable systems that, in many cases, can only be rectified by a complete re-imaging process.
- 3 Microsoft has issued statements against circumventing standard operating system installation protocol and indicates that systems configured with such applications are, in effect, unsupported.

2 Migration Overview

This chapter contains points to consider when you plan a migration project with CM Settings Migration Manager. Next, we present the general steps for use of the program. Following that, to provide a background for various uses of the program, we illustrate three common scenarios for the use of CM Settings Migration Manager. Topics include the best ways to use the program in a networked environment, a direct, computer-to-computer scenario, and considerations for mixed environments. Advantages of CM Settings Migration Manager's flexibility and options in meeting the requirements of nearly any environment are highlighted.

Migration Project Considerations

Examining the basic requirements of a migration project and your available resources can help determine the best approach for a given situation.

- 1 How many computers are involved?
CM Settings Migration Manager can be used for the replacement of a single PC, as well as in a mass migration involving hundreds or even thousands of computers.
- 2 Are the computers in a network environment or a non-network environment?
- 3 The two conditions are very different in terms of time and media requirements.
- 4 Will a drive-imaging product be used alongside CM Settings Migration Manager to prepare new computers with a base operating system image and common corporate applications?
CM Settings Migration Manager is flexible enough to work with any drive-imaging product.
- 5 Extracted data can take up a lot of space if user data files are included. Where will the extracted personalities be stored? Will multiple computer personalities be extracted and then injected at a later time? Or will each extraction be followed immediately by an injection on to the new computer?
- 6 How many technicians will be involved?
The more technicians required, the more important a plan becomes to avoid confusion and assure consistent results. Using multiple CM Settings Migration Manager Configuration files provides flexibility to maximize productivity.

Using CM Settings Migration Manager on a Network

In a networked environment, the benefits of CM Settings Migration Manager are best realized if the product is installed to individual computers from a common network location. This automatically establishes a common location for personalities. It is important to ensure this location is available to all

computers participating in the migration project. There must be enough disk space available for the extracted personality data.

Extraction and Injection Flexibility

You have several choices for storing personalities after they are extracted:

- Removable media
- File server
- Local drive
- USB Hard Drive

Using CM Settings Migration Manager One-on-One

Migrating personalities directly from one computer to another in a non-network environment is essentially the same as migrating in a networked environment. If two computers cannot be physically connected to each other, use a USB Hard Drive or removable media to store and transfer the extracted personality.

If two computers can be physically connected with a serial, parallel, or USB cable, the extracted personality can be transferred from the source to the target computer using that connection.

Migrating Users that are not the Currently Logged In User

CM Settings Migration Manager can be used to either migrate the personality of the currently logged in user, or migrate the personality of users that are not currently logged in, but have user profiles on the computer. Migrating users that are not logged in at the time of extraction or injection can be performed using CM Settings Migration Manager automation, or from the CM Settings Migration Manager user interface.

- ▶ To extract or inject a personality for a user that is not currently logged in to the machine, the user that is performing the extraction or injection must have local administrator rights. Also note that CM Settings Migration Manager requires elevated administrator privileges when running on Windows Vista.

Multi-Profile Environments

Some corporate environments take advantage of multiple profiles on single computers to facilitate computer sharing. CM Settings Migration Manager can be used to migrate multiple user profiles from the CM Settings Migration Manager user interface, or by utilizing CM Settings Migration Manager's automation capabilities. See Chapter 8, [Command Line Interface](#) for more information on CM Settings Migration Manager automation.

CM Settings Migration Manager and Disk Partitions

CM Settings Migration Manager supports PCs that have multiple Windows partitions. When moving files CM Settings Migration Manager uses the following rules:

- 1 All requested files are extracted from the fixed drives of the source computer.
- 2 During injection, CM Settings Migration Manager first looks to see if the drive letter exists on the target system. If so, the file is moved to that location. If the requested directory associated with that file does not yet exist, CM Settings Migration Manager creates it before injecting the file.
- 3 If the drive letter does not exist on the target computer, then CM Settings Migration Manager creates a *MIGRATED_ x_ DRIVE* directory at the root of the target system's C drive where *x* is the drive letter from which the file was extracted. The file (and its corresponding directory structure) is copied to this directory.

Examples for Directory Creation and Drive Letter Recognition

Example 1

C:\specialdocs\codeblue\highlights.doc will be migrated from Computer A to Computer B. Computer B has one disk partition, C. CM Settings Migration Manager migrates highlights.doc to C:\specialdocs\codeblue on Computer B, creating the necessary directory structure if it doesn't already exist.

Example 2

D:\userfiles\old \report.html will be migrated from Computer A to Computer B. Computer B has two partitions, C and D. CM Settings Migration Manager migrates report.html to D:\userfiles\old on computer B, creating the necessary directory structure if it doesn't already exist.

Example 3

E:\userfiles\old \report.html will be migrated from Computer A to Computer B. Computer B has two partitions, C and D. CM Settings Migration Manager creates C:\MIGRATED_E_DRIVE on computer B and places \userfiles\old\report.html in that newly created directory since an E partition does not exist on the target.

Printer Considerations

CM Settings Migration Manager migrates settings for network printers, and the identity of local printers so that the proper drivers can be installed. Local printer drivers must be installed individually on target computers.

Migrated network printers appear as reconnect icons on the desktop. Clicking on a reconnect icon attempts to connect to the printer using the standard Windows installation routine for your operating system.

3 Extracting using CM Settings Migration Manager

This chapter introduces configuration files, templates and the Data Store. Also included is a step-by-step extraction tutorial demonstrating how to create a Data Store and select which elements of a personality are extracted using the extraction template.

Extraction Overview

To perform an extraction:

- 1 Use the **Browse** and **Select** buttons to set the location for the Data Store if a location other than the default is desired. A configuration file other than the default can also be selected.
- 2 Select whether you want to migrate the personality of the user that is currently logged in, or one or more of the other users from the User(s) to Extract tab.
- 3 CM Settings Migration Manager supported personality objects are listed in the Select for Extraction window. By default, all personality object boxes are unchecked. Select the personality objects desired by clicking the associated check boxes.
- 4 If you are migrating personalities from tens, hundreds, or thousands of computers, you may want to create a customized configuration to help implement a consistent process and set of standard policies. Make your configuration selections and changes, then simply save the configuration file if you want to use this same configuration for several personality migrations.
- 5 When satisfied with the extraction setup, click **Begin Extraction**. A progress and status dialog displays. When finished, click **OK** to display the log file and return to the Extraction View.

Configuration Files

Understanding configuration files and how they are used is important when configuring CM Settings Migration Manager for a migration. The actual contents of a configuration file are straightforward. It contains the location of the Data Store, the location of the default Extraction template, File Rules, policy selections, and the log file detail level. Multiple Configuration files can be created and associated with different departments, buildings, organizations, or any other group.

When the configuration file is saved, it automatically saves any personality objects that have been selected in the Select for Extraction window. Saving the CM Settings Migration Manager configurations to be used for future migrations eliminates the manual selection of personality objects for each

individual computer to be processed, which can save a good deal of time on a major project.

The Data Store

The Data Store is where CM Settings Migration Manager stores extracted personalities and where it looks for personalities to inject. In a network environment, it makes sense to designate a common location on a server as the Data Store. If desired, a different Data Stores can be maintained (by having different configuration files) to simplify the storage and retrieval of personalities.

In a peer-to-peer network, the computer the data is extracted from can actually be used as the Data Store. Conversely, the target computer can also serve as the Data Store. For stand-alone computers, the Data Store is typically on the local drive of the computer. In all cases, the Data Store must eventually be accessible to both the source and target computers.

File Rules

The File Rules functionality of CM Settings Migration Manager intelligently scans for and moves files based on parameters to include or exclude files by path, type, date and size, and file extension. Rules are specified in the **Edit → File Rules** dialog box and are saved when the Configuration file is saved. See Chapter 6, [Using File and Registry Rules](#) for more details on this feature.

Log File Detail Level

CM Settings Migration Manager keeps a log of activity during extraction and injection. The level of detail in the log file is specified in the **Edit → Preferences → Log File** dialog box and is saved in the configuration file. See Chapter 5, [OV Setting Migration Manager Interface](#) for more details on this feature.

Configuration File Search Rules

CM Settings Migration Manager looks in the current directory for a configuration file named `se.cfg`. In a network environment, the current directory is the Sharepoint Setup directory established in Step 1 of the installation (see Chapter 1, **Introduction**). If the configuration file was saved with a different name CM Settings Migration Manager will still look for a file `se.cfg`. If that file is not found, a default will be created.

Before Running CM Settings Migration Manager on a PC to Be Extracted

- Run a virus scan of the computer's entire system.
- Remove any unwanted files and directories.
- Run Scan- Disk.
- Close any open applications and background processes (this is required).

Extract Personality View

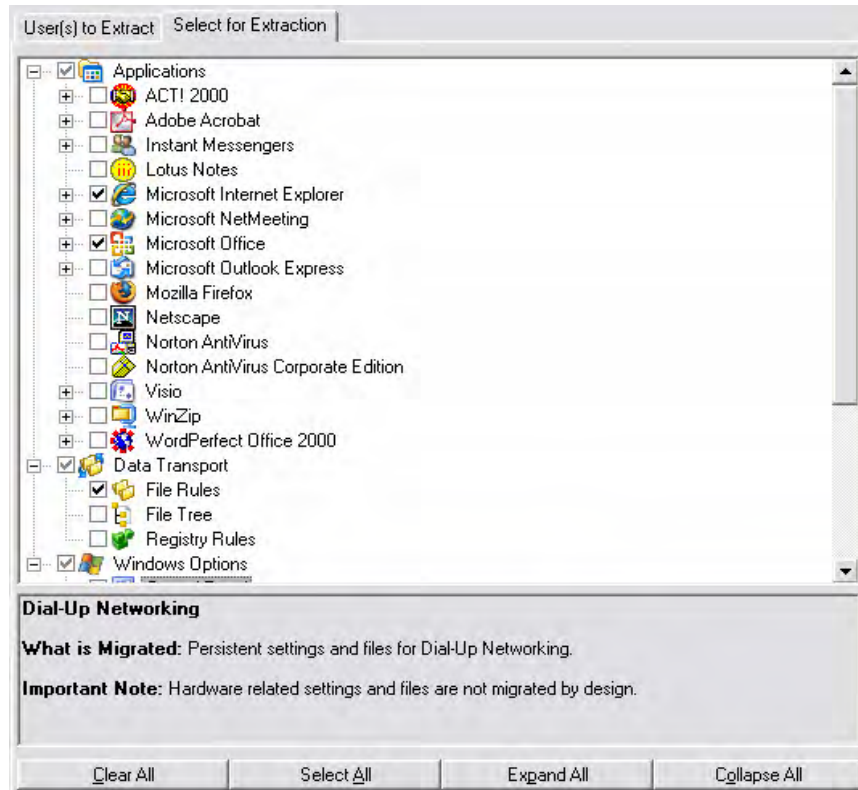
On the Data Store option line, click **Browse** and then select the location of the Data Store if a location other than the default is desired.

Figure 1 Browse for folder



By default, no items in the extraction template are checked for inclusion. Include items by clicking the box next to the item to place a check mark in the box. If desired, click the respective checkbox again to clear specific items:

Figure 2 **Select resources to migrate**



If a general, custom template is used for many computers, be aware that for each item that is selected, CM Settings Migration Manager will perform a drive scan on the system checking for the existence of the data files or data settings for that particular item. Selecting only those items that are specific to your environment will allow for better performance.

After the extraction template is set, click **Extract** at the bottom right of the screen:

When the extraction is complete, a successful extraction message appears.

The log file is also displayed when the extraction is complete.



If you are performing an extraction or injection of the currently logged in user's personality, the logged in user must have full access to the local file system, and full access to the registry hives of `HKEY_USERS`, `HKEY_CURRENT_USERS`, and `HKEY_LOCAL_MACHINE`.

To extract or inject a personality for a user that is not currently logged in to the machine, the user that is performing the extraction or injection must have local administrator rights. Also note that CM Settings Migration Manager requires elevated administrator privileges when running on Windows Vista.

4 Injecting Using CM Settings Migration Manager

This chapter shows you how to streamline the injection process using configuration files. A step-by-step injection tutorial is also included.

Injection Overview

Now that the data are extracted to the Data Store, they can be injected into a target computer. The first step is to open CM Settings Migration Manager and switch to the Injection View by clicking the Inject Personality icon on the left side of the window.

Select an alternate Data Store location other than the default by clicking **Browse**. This will open the Browse for Folder dialog box. Select the desired data store location and click **OK**.

Figure 3 Browse for folder



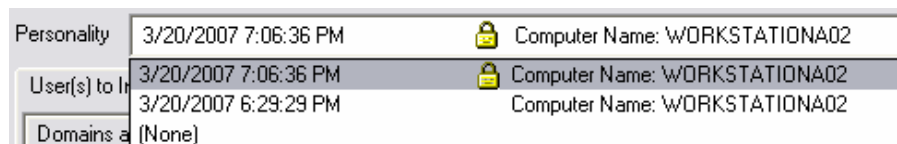
► Data Store selection is not required if both the source and target computers installed CM Settings Migration Manager from the same network location and are using the default Data Store location.

If you are performing an extraction or injection of the currently logged in user's personality, the logged in user must have full access to the local file system, and full access to the registry hives of HKEY_USERS, HKEY_CURRENT_USERS, and HKEY_LOCAL_MACHINE.

To extract or inject a personality for a user that is not currently logged in to the machine, the user that is performing the extraction or injection must have local administrator rights. Also note that CM Settings Migration Manager requires elevated administrator privileges when running on Windows Vista.

Extracted personalities appear, listed in the Personalities drop-down box as shown below:

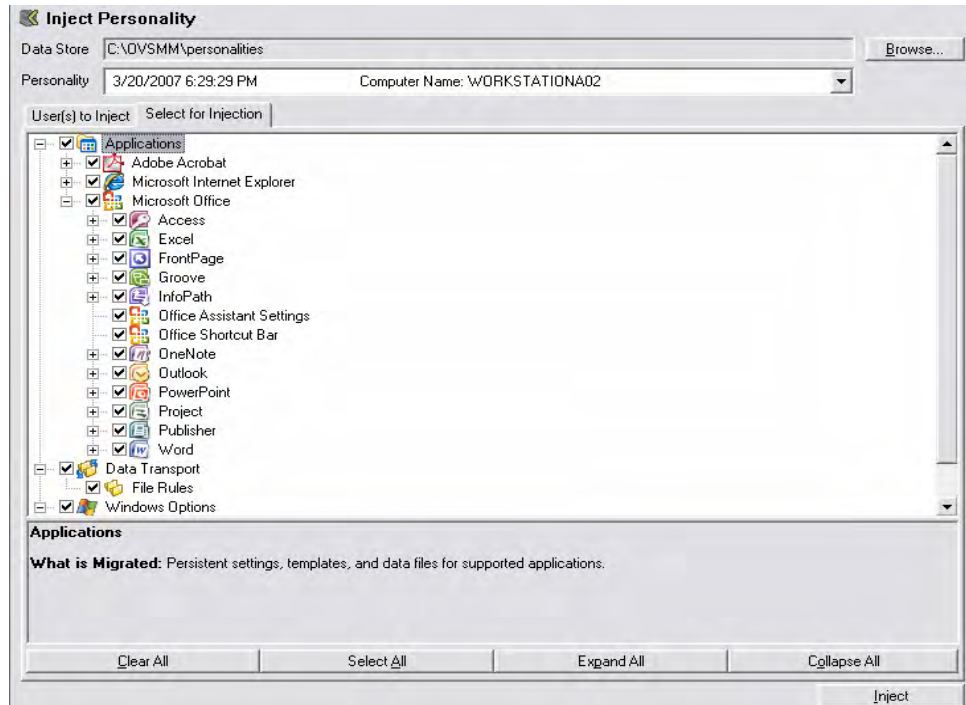
Figure 4 Select personality to inject



Select a personality from the Personalities drop-down box. The lock icon beside a personality means it has been password protected.

Application data associated with a personality displays in the Select for Injection window. Include or exclude applications by checking the personality object's check box. When satisfied with the injection setup, click **Inject**.

Figure 5 Select component to inject



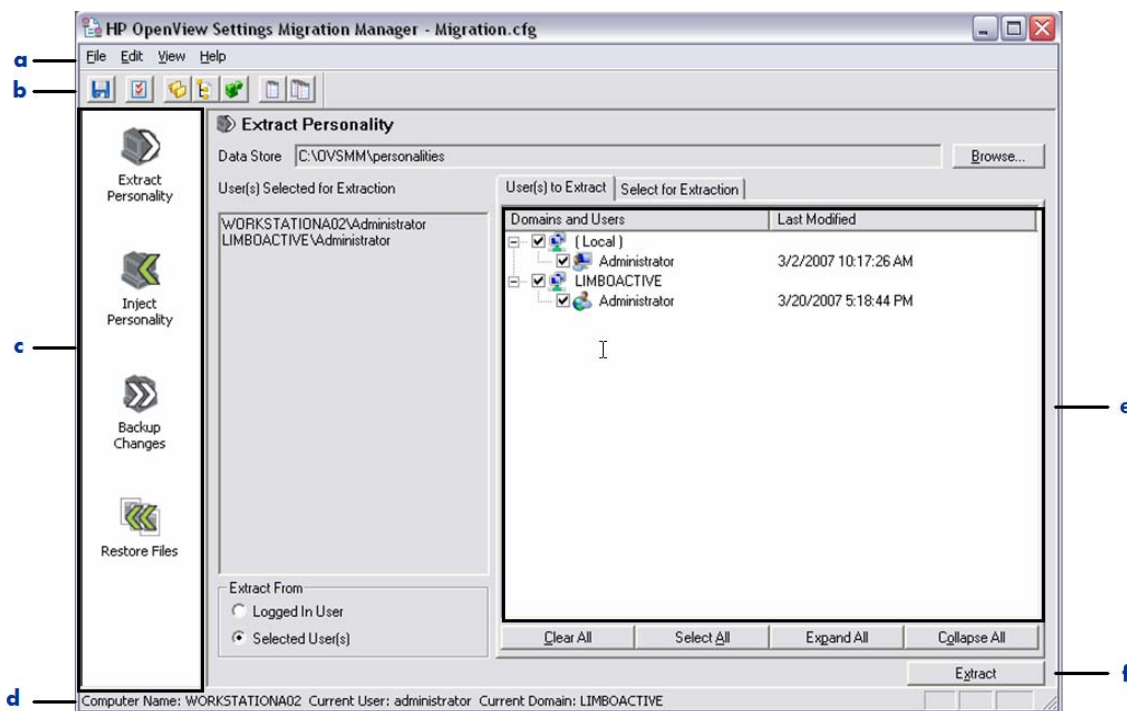
After the injection process starts, it should not be interrupted. The successful injection message appears when injection is complete:

After you click **OK**, the log file is displayed in a dialog box.

5 OV Setting Migration Manager Interface

CM Settings Migration Manager was designed with ease of use in mind so common functions and repetitive operations are easily accessible. The CM Settings Migration Manager user interface contains menus, toolbars, a process bar and an active process area.

Figure 6 Settings Migration Manager configuration window



Legend

- a Menus** – Standard Windows drop-down menus provide access to Settings Migration Manager functions.
- b Toolbar** – Located below the menus, this area provides one-click access to the most commonly used functions.
- c Process bar** – Icons for extraction, injection, incremental backup, and restoration of files are here. Click an icon to select a process.
- d Status bar** – Contains the computer name, current user, and current domain. It also displays the actions of menu items and toolbar buttons as you move the cursor over them.
- e Process window** – This window shows your currently active process, which could be extraction, injection, incremental backup, or file restoration.
- f Action button** – Click this button to begin the process that is active in the process window.

CM Settings Migration Manager Menus and Toolbar

The CM Settings Migration Manager interface contains typical Windows-based menu structures such as File, Edit, View, and Help.

File Menu

The File menu has the following commands:

Table 1 File menu options

Option	Description
Open	Select configuration files
Save	Save current configuration file
Save As	Save configuration files with a specified name
Select Data Store Location	Specify a network location or local drive and directory in which to store personality data
Exit	Exit CM Settings Migration Manager

Edit Menu

The Edit menu has the following commands:

Table 2 Edit menu options

Option	Description
Preferences	Opens the Preferences dialog box. The Preferences dialog box displays the Policies and Log File tabs.
File Rules	Takes you directly to File Rules
File Tree	Takes you directly to File Tree
Registry Rules	Takes you directly to Registry Rules
Delete Personalities	Allows you to delete selected personalities

View Menu

The View menu has the following commands:

Table 3 View menu options

Option	Description
Toolbar	Toggles to show or hide the toolbar
Content Help Text Pane	Toggles to show or hide the Content Help Text Pane
Status Bar	Toggles to show or hide the Status Bar
Extract Personality	Changes to the Extract Personality view
Inject Personality	Changes to the Inject Personality view
Backup Personality Changes	Changes to the Backup Personality Changes view
Restore Files From Personality	Changes to the Restore Files view
View Last Log	Displays the Log file from the last CM Settings Migration Manager process
View Personality Logs	Opens a "browse" dialog to the personality data store directory giving the migration administrator or user the ability to select and view log files associated with each personality.

Help Menu

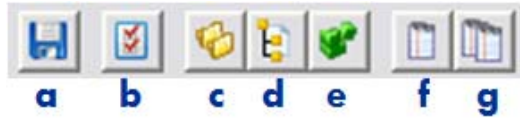
The Help menu has the following commands:

Table 4 Help menu options

Option	Description
Help on CM Settings Migration Manager	Opens CM Settings Migration Manager Help
About CM Settings Migration Manager	Displays the copyright notice and version number of your copy of CM Settings Migration Manager

CM Settings Migration Manager Toolbar

Figure 7 **Toolbar**



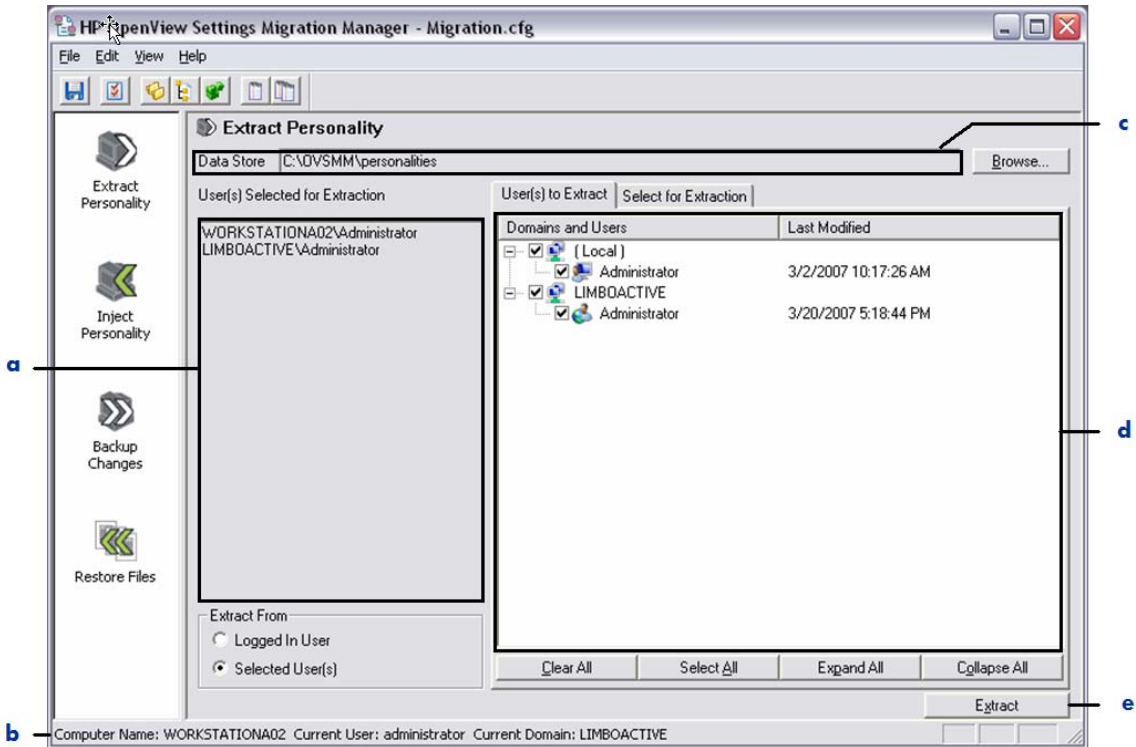
Legend

- a** Save Configuration File
- b** Edit Preferences
- c** File Rules
- d** File Tree
- e** Registry Rules
- f** Last Log File
- g** Personality Log Files

Users to Extract View

The Extract Personality view always appears when you start CM Settings Migration Manager:

Figure 8 Extract Personality view



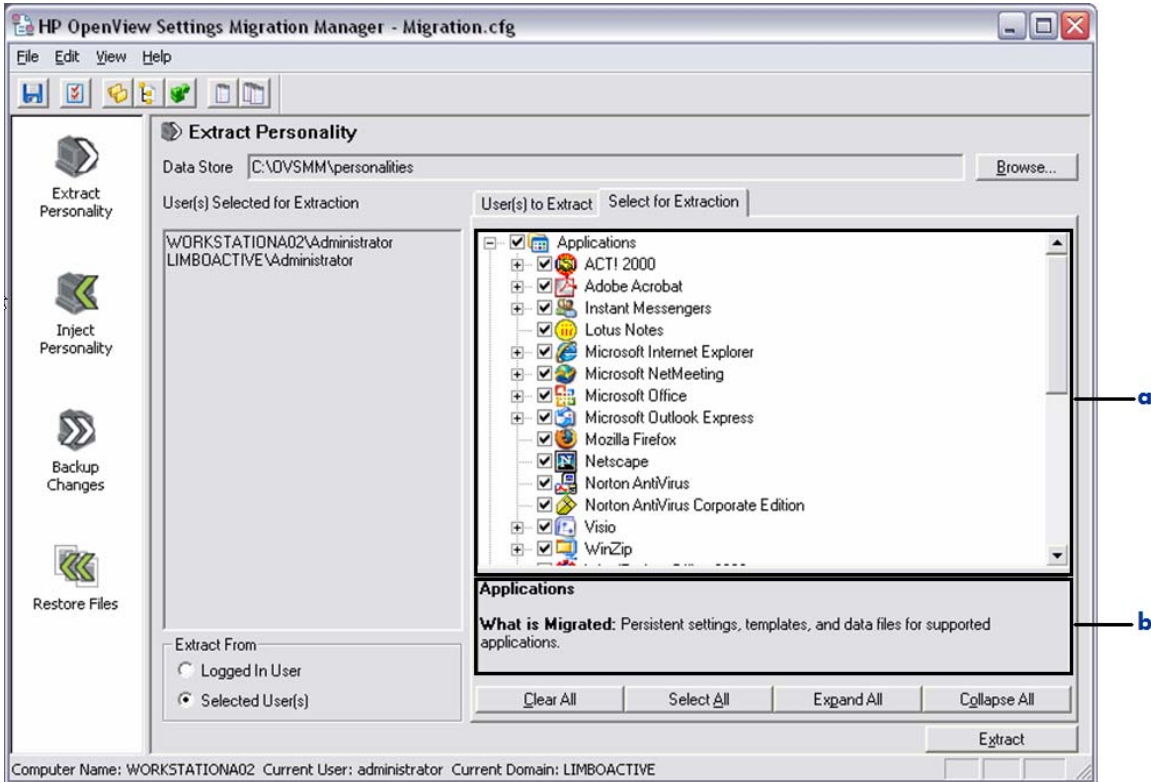
Legend

- a Users Selected for Extraction** – Displays Information to identify specific users selected for extraction.
- b Extract From** – Select to extract the personality for only the Logged In User, or for a single or multiple users selected in the User to Extract list.
- c Data Store** – Indicates where personality will be stored on a local drive or on the network.
- d Users to Extract** – Displays a list of users on the computer that are available to select for extraction.
- e Action Button** – Click this button to begin the extracting the users you have selected.

Select For Extraction View

When you click the **Select for Extraction** tab, you see the following:

Figure 9 Select for Extraction view



Legend

- a** **Select for Extraction** — The list of personality objects that can be extracted to the Data Store. Select what you would like to extract by checking the boxes.
- b** **Content Help Text Pane** — For each content item that your mouse pointer hovers over, pertinent information is displayed in this window.

Extraction Information

To select the Data Store location click **Browse**, or go to **File → Select Data Store Location**. Click the button to display a standard navigational window from which a drive and directory can be selected.

Users to Extract

This screen displays a list of users that exist on the computer where the CM Settings Migration Manager is currently running. If you are logged on to the computer as a user that is in the local administrator group, you will be able to select a single user or multiple users from the list for personality extraction. If you are logged on to the computer as a user that is not in the local administrator group, only the currently logged on user will be available for personality extraction.

Select for Extraction

CM Settings Migration Manager will migrate a personality based on its built-in knowledge of the settings and files that are associated with many common applications. The settings and files to be moved are specified by selecting the personality objects in the Select for Extraction window, which are grouped by application.

Select items to extract by checking that item's check box. Exclude items by clearing the checkbox.

- The **Clear All** button at the bottom of the window turns off all check marks.
- The **Select All** button sets all check marks.
- The **Expand All** and **Collapse All** buttons allow you to change how the objects are viewed in the window.

The extraction objects that are selected are saved with the Configuration File. Saving your configuration will help speed up the processing of multiple computers. To save the CM Settings Migration Manager configuration file use the File menu or click **Save Configuration File**.

Extract

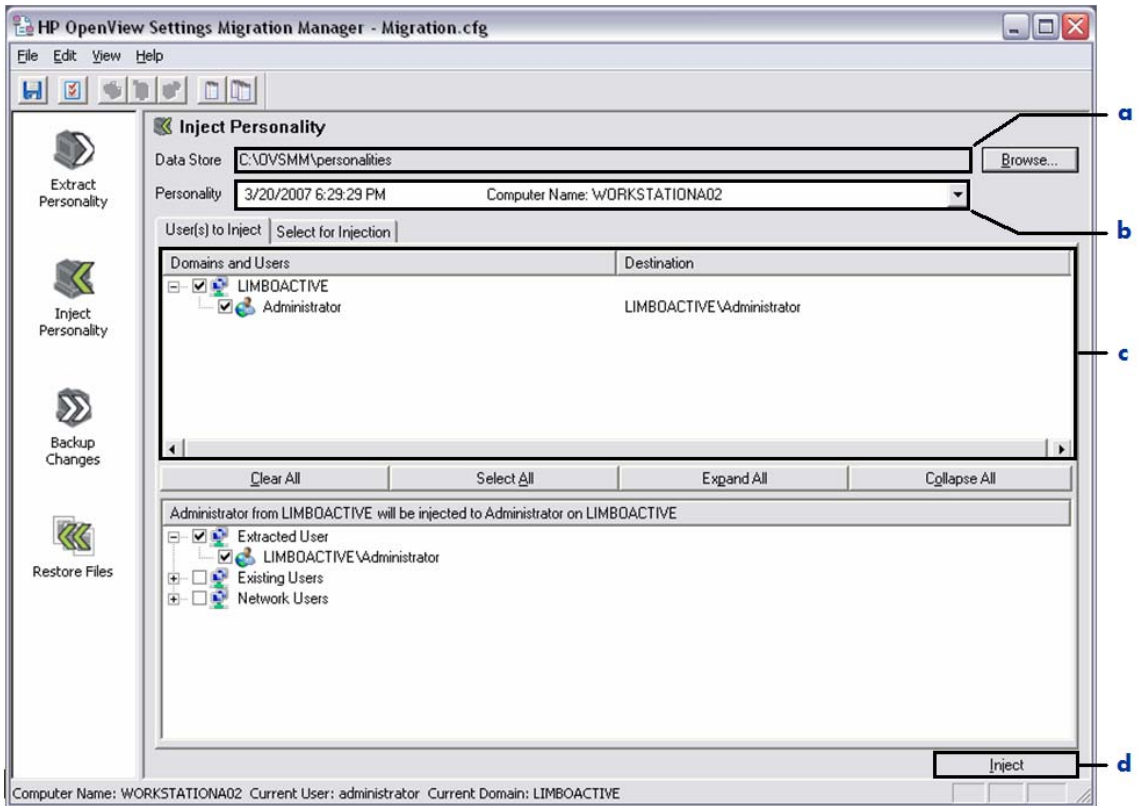
Click **Extract** to start the extraction process. A progress and status dialog appears. The extraction process can be cancelled (unlike the injection process).

When finished, the program displays a dialog box informing you that the extraction was successful, displays a log file, and returns to the Extraction View.

Users to Inject View

To get started with a typical injection process, start CM Settings Migration Manager. Click the **Inject Personality** icon to display the Inject Personality View. See [Figure 10](#) on page 50 for a full explanation of this view.

Figure 10 Inject Personality view



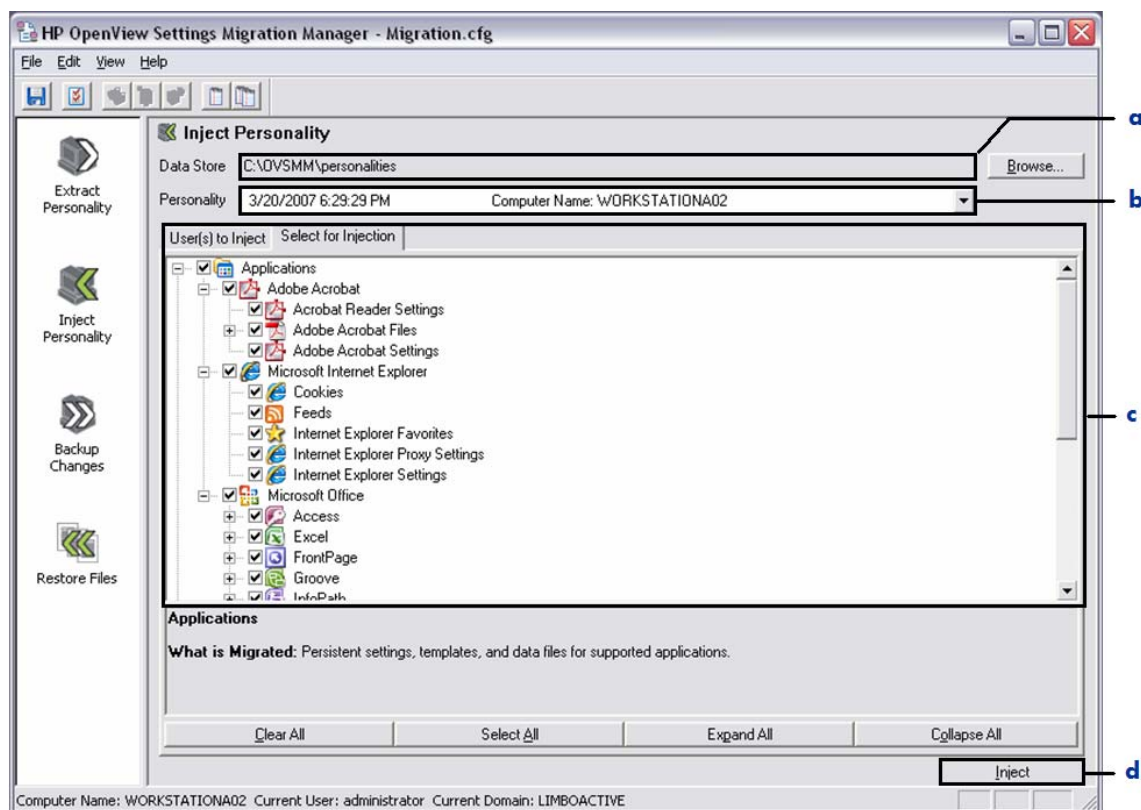
Legend

- a Data Store** – Indicates the default location where the extracted personalities have been stored.
- b Personality Selection Field** – Displays a drop down list of previously extracted personalities in the selected data store.
- c User(s) to Inject** – Displays a list of users that are available to select for injection.
- d Action Button** – Click this button to begin the injection of the users you have selected and all data previously extracted for that user.

Select for Injection View

When you click the **Select for Injection** tab, the list of files that you extracted in the past for the selected personality appear. Check the box next to the items you want to move to the target PC.

Figure 11 Select for injection view



Legend

- a Data Store** — The default location where the extracted personalities have been stored.
- b Personality Selection Field** — Displays the personality you have previously extracted and have selected to inject.
- c Data to Inject** — Displays a list of data that are available to select for injection to the target PC.
- d Action Button** — Click this button to begin the injection of the user and data you have selected.

Injection Information

To select the Data Store location use the adjacent **Browse** button, or go to **File → Select Data Store Location**. Click these buttons to display a standard navigational window from which a drive and directory can be selected. To open a configuration file, go to **File → Open** and select a configuration file. The configuration file that is currently open is shown in the CM Settings Migration Manager title bar.

Personalities

Select a personality from the Personalities drop down by clicking on it. Personalities can be deleted by going to **Edit → Delete Personalities**.

Users to Inject

This tab displays the users available to be injected from the selected personality. De-select the users you do not want to inject by clearing the check box next to the username.

- The **Clear All** button at the bottom of the window turns off all check marks.
- The **Select All** button sets all check marks.
- The **Expand All** and **Collapse All** buttons allow you to change how the users are viewed in the window.

User Destination

Enables you to change where the selected user will be injected. To change the destination of a user, select a user from the User(s) to Inject window. When you select a user, you will notice that the user information in the Select User Destination window changes to the user that you selected. From this window you can select a user that exists on the machine to inject to or select a user from the list of network users. The default is to inject to the username of the user that was extracted.

Select for Injection

The Select for Injection window lists extracted items included in the selected personality. De-select items you do not want to inject by clearing the item's check box.

- The **Clear All** button at the bottom of the window turns off all check marks.
- The **Select All** button sets all check marks.
- The **Expand All** and **Collapse All** buttons allow you to change how the objects are viewed in the window.

Inject

Click **Inject** to start the injection process. A progress and status dialog appears. After the injection process starts, it can be cancelled, but you must wait for CM Settings Migration Manager to finish its current process and activate the CM Settings Migration Manager window again.

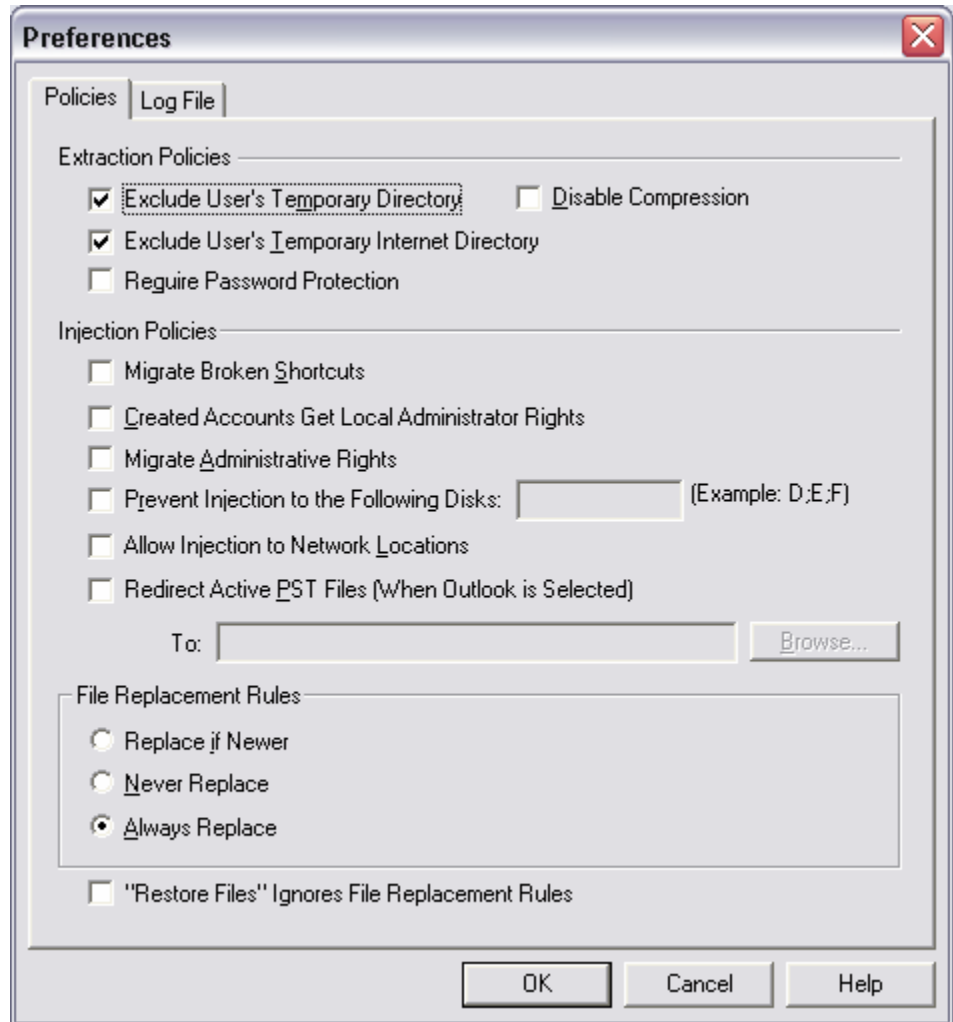
Edit → Preferences Menu

Various CM Settings Migration Manager options and preferences can be set through the **Edit → Preferences** dialog box. This dialog can also be activated by the **Edit Preferences** toolbar button. The two tabs that are available in the Preferences dialog are those for controlling Policies and Log File options.

Policies

This tab Includes Extraction Policies, Injection Policies, and File Replacement Rules.

Figure 12 Policies



Extraction Policies

These policy selections only affect the personality extraction process.

Exclude User's Temporary Directory or Exclude User's Temporary Internet Directory

CM Settings Migration Manager normally scans all directories looking for files that need to be migrated. Since temporary directories normally contain only temporary files, and can grow to be very large, the option to exclude these directories from CM Settings Migration Manager scans is available.

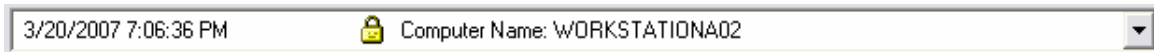
Please note that this policy is checked to exclude these directories by default. To include these directories go to the **Edit → Preferences → Policies** tab. Deselect the **Exclude User's Temporary Directory** and **Exclude User's Temporary Internet Directory** check boxes to include these associated directories when scanned by CM Settings Migration Manager.

Require Password Protection

If this policy is selected you will be required to assign a password to each personality that you wish to extract. The password must be between 7 and 15 characters in length, and can only contain letters, numbers and underscores. Passwords are case sensitive.

Personalities that are password protected are displayed in the personality drop down menu with a lock icon.

Figure 13 Lock icon



To inject a password protected personality, click **Inject** and enter the assigned password. After the correct password has been entered, click **OK** and the personality will be injected.

Disable Compression

By default CM Settings Migration Manager will compress the extracted personality data. The compression ratio is approximately two to one. Selecting this policy will disable personality compression.

Injection Policies

These policy selections only effect the personality injection process.

Migrate Broken Shortcuts

Shortcuts that have broken links are not migrated by default. For example, if there is a shortcut to an installed application on the source machine but that application is not installed on the target machine, the shortcut will not be migrated because it would have become a broken link on the target machine.

To migrate broken link files select **Edit** → **Preferences** and select the **Broken Shortcut Policy** check box. The broken link files will be migrated to the source directory and placed in a folder named `Broken Shortcuts`.

Created Accounts Get Local Administrator Rights

If CM Settings Migration Manager will be creating user accounts on injection, you have the option to select to have those accounts created with local administrative rights.

- ▶ CM Settings Migration Manager only creates accounts on injection if the specified user does not already exist on that system. By default this policy is not selected. If this policy is not selected, the user is created with default user rights.

Migrate Administrative Rights

Selecting this policy will migrate the administrative rights for a selected user. For example, if the user was in the Administrator group on the source computer, the user will be populated in the Administrator group on the target computer following an injection.

Prevent Injection to the Following Disks

This policy enables you to specify letters associated with drives that you do not want CM Settings Migration Manager to inject data to during the personality migration.

- ▶ You cannot prevent injection to drive C.

Example

The source machine has two fixed drives (`C:\` and `D:\`) both containing data. Data is extracted from both of the drives. On the target machine you also have drives `C:\` and `D:\`. CM Settings Migration Manager by default will

inject the data that was extracted from the source computers C:\ and D:\ drives to the target computer's C:\ and D:\ drives.

If you want data to inject only to the C:\ drive even if extracted from D:\, you can select this policy and exclude the D:\ drive from the injection. If the D:\ drive is excluded from the injection in this example, then the data that was extracted from the D:\ drive will be automatically injected to the root of the C:\ drive into a folder name `Migrated_D_Drive`. The file (and its corresponding directory structure) is copied to this directory.

To exclude a single drive, simply enter the drive letter associated with the drive you want to exclude:

Figure 14 Exclude a single drive




To exclude multiple drives, enter the driver letters and separate each letter with a semi-colon (;).

Figure 15 Exclude multiple drives




Allow Injection to Network Locations

Selecting this policy will enable you to enter File Rules with destination paths targeting a network location.

 If you are injecting multiple users' files to the same network location, there is a risk that files with the same name will be overwritten and user data will be lost.

For example the following file rule if used for multiple users could result in user files being overwritten:

Figure 16 Sample file rule

Source Path	Date	Size	Sub	Inc	Exc	Destination Path	PrsSub
 C:*.doc			Yes	X		\\MachineA\Data Files	Yes

This rule extracts file types of .doc from the C:\ drive of the local machine and the subdirectories of the C:\ drive. On injection the Destination path targets the network-shared folder Data Files on Machine A. If this file rule

was used in a global configuration it could result in multiple user data file collisions, as each user's .doc files would be redirected to the same folder on the network.

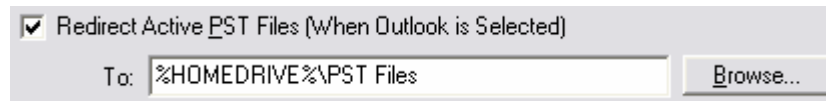
Redirect PST Files

Selecting this policy allows you to redirect Outlook .pst files to a specific location on the local machine or network. Note that the Allow Injection To Network Locations policy does not have to be selected in order to redirect .pst files to a network location.

To redirect the PST files, select the corresponding policy and enter the desired redirection path in the available field. The redirection path can consist of a UNC path, the %HomeDrive% token, drive letter of a Home Drive, drive letter of a network drive, or a drive letter of a local drive.

Example:

Figure 17 Redirect the PST File



▶ When using the Redirect Active PST Files policy, in order for .pst files to be redirected Outlook content must be selected. Outlook content can be selected for extraction by going to the Extract Personality view in CM Settings Migration Manager and then clicking the Select For Extraction tab.

File Replacement Rules

Select a file replacement option to govern how files specified with the File Rules or File Tree are handled when same-name files are found on the target computer.

Always Replace

Replaces files on the target computer that have the same name as files that were extracted using File Rules or the File Tree.

Replace If Newer

Replaces files on the target computer that have the same name only if the files that were extracted have a modified date that is newer than the files on the target computer.

Never Replace

Never replaces files on the target computer that have the same name as files that were extracted using File Rules or the File Tree.

“Restore Files” Ignores File Replacement Rules

Selecting this policy will enable files to be restored using “Restore Files” to ignore the File Replacement Rules selection.

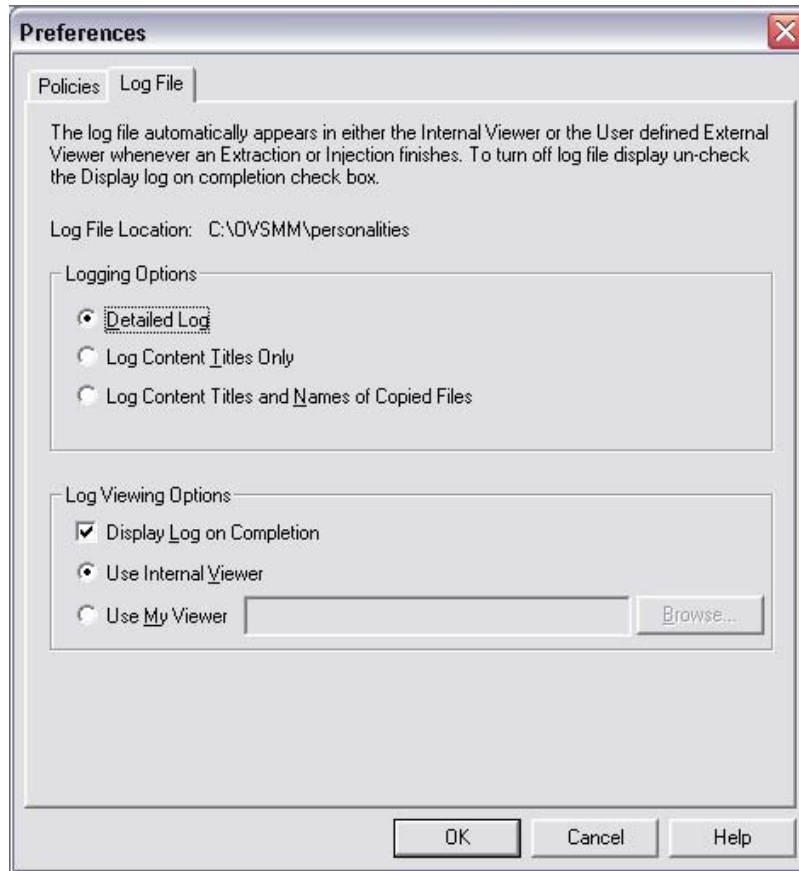
Log File

The CM Settings Migration Manager log file can be customized by accessing Preferences through the Edit menu and selecting the **Log File** tab.

Choose the level of log file detail from the radio buttons for Detailed Log, Log Content Titles Only or Log Content Titles and File Names Moved.

CM Settings Migration Manager logs can be opened and viewed in an external viewer such as Microsoft Notepad. Your choices of log viewing options include: Display log on Completion, User Internal Viewer, or Use My Viewer. To use an external viewer, simply browse to the location of the viewing application such as `notepad.exe`.

Figure 18 Customize the log file



The name of the log file contains the computer name and the date and time of the extraction, injection, backup, or restore. Log files are located in the personality folder that is created when a personality is extracted with a naming convention of `ComputerName_Ext`.

A log file is automatically displayed whenever a process finishes so the details of the process can be reviewed immediately. Automatically displaying the log file at the completion of a migration process is a default setting that can be changed by going to **Edit** → **Preferences** → **Log File** (tab).

Log File Information

Log files report every aspect of a migration, personality backup, and file restore. The log file can be used to identify all the files that were extracted,

injected, backed up, or restored in a given migration including file size, file count and file path. The log file also contains migrated application setting information where applicable as well as a list of users that were extracted or injected.

Log File Sections

The log file has several sections containing pertinent information about the personality extraction, injection, backup and restore.

User Information

This section contains the name of the computer from which the extraction, injection, backup or restore was performed, the user name of the migration operator, and a list of extracted, injected, and backed up users including domain association.

Time

Displays the Start Time, End Time, and Elapsed time for the extraction, injection, or backup.

Operating System

Lists the version and service pack of the operating system from which the personality extraction, injection, backup or restore was performed.

Local Fixed Drives

Displays the used and free space of each fixed drive found on the system.

Configuration Information

Displays the name and location of the configuration file used for the migration.

Data Store Information

Displays the Data Store location and Personality Location/Name.

Log Level

Shows the level of Log Detail. The log level detail can be changed by going to **Edit** → **Preferences** → **Log File**.

Content Selected For Extraction/Injection

List of application content (Data files and Settings) selected for migration or personality backup.

Data Transport Policies

Displays the extraction or injection policies that were selected for the specific migration.

File Rules

Lists the File Rules that were included for the migration or personality backup.

File Section

This section will display files that could not be extracted, injected or backed up as a result of the file or directory being inaccessible. When using Restore Files, this section of the log will list all files that were restored or not restored. It will also include a redirection path of the restored file if file redirection was used.

Total Files

Lists a total file count for the extraction, injection, or backup.

Summary

Displays the path and file count from which files were extracted, injected, or backed up.

Detail

Displays the file path, file name, file size and file count for each data file that was extracted, injected, or backed up.

6 Using File and Registry Rules

This chapter introduces File Rules and the various rules that can be created using wildcards, tokens and file redirection. The chapter also describes the use of File Tree within a migration. Finally, there is a section on Registry Rules and how rules can be used to quickly migrate specific registry information.

File Rules

Most desired data files can be migrated using CM Settings Migration Manager's built-in support. Enterprise migration projects often require additional file migration support. For example, you may want to migrate proprietary file types created by internally developed applications.

Designed for major migration projects, File Rules provides a method to include or exclude files by path, type, date, and size. Subdirectories can be included or not. Multiple rules can be created to tailor a migration to meet project goals and requirements.

► File Rules take precedence over files selected using the File Tree (discussed later). File Rules can also be used to override or modify file based personality objects selected in the Select for Extraction window.

Accessing File Rules

Go to **Edit** → **File Rules** to access File Rules:

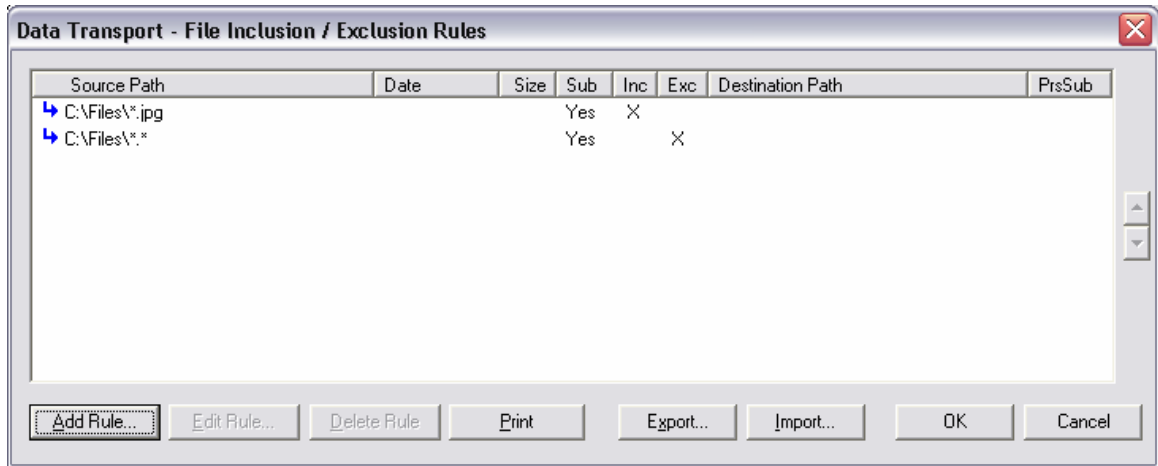
File Rules have hierarchical precedence. If two rules are mutually exclusive, the rule that appears higher in the list takes precedence over the rule that appears below. For example, precedence can be used to migrate all the .jpg files from the directory `c:\files`, yet prevent any other files in that directory from moving.

Consider the following example. In this case, use precedence between mutually exclusive rules as follows:

RULE 1: Include all .jpg files in `c:\files`

RULE 2: Exclude all files from `c:\files`

Figure 19 Data Transport – File rules



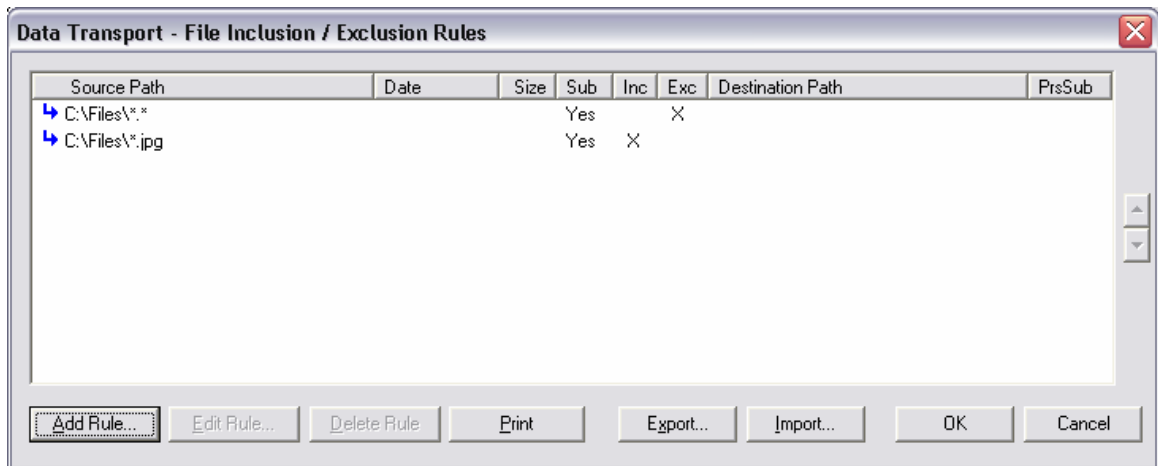
Since Rule 1 takes precedence over Rule 2, any .jpg file found in the directory migrates. However, files of any other type found in the directory do not, since Rule 2 applies, and Rule 1 does not.

Now consider the reverse order:

RULE 1: Exclude all files from c:\files

RULE 2: Include all .jpg files in c:\files

Figure 20 Data Transport – File rules

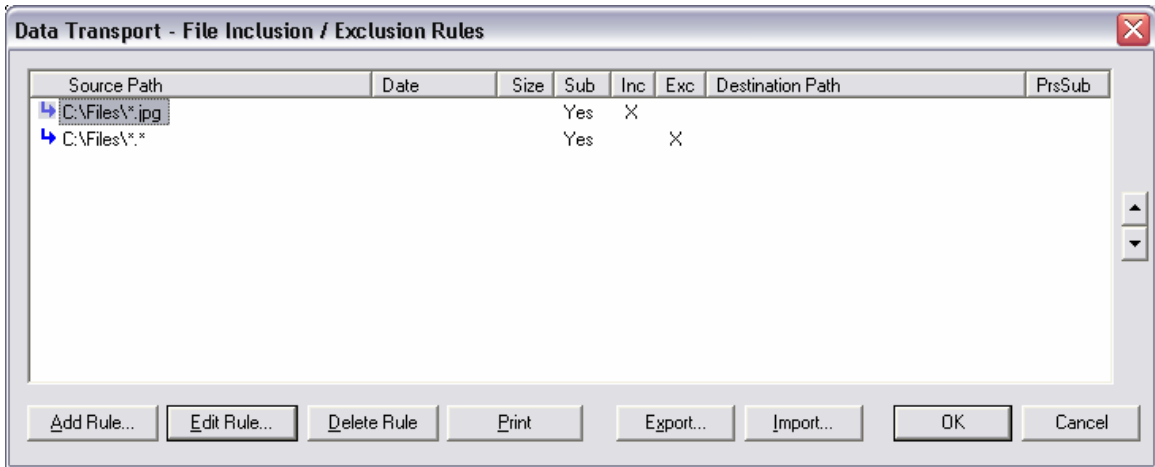


In this case, no files found in the directory will migrate, since Rule 1 (exclude all files) takes precedence.

Files can also be redirected to a different directory on the target computer with the Destination Re-mapping feature. Any path can be specified as a destination including network paths. Subdirectory structure can be preserved or not.

Click **Add Rule**, **Edit Rule**, and **Delete Rule** to enter and manipulate rules.

Figure 21 Data Transport – File rules



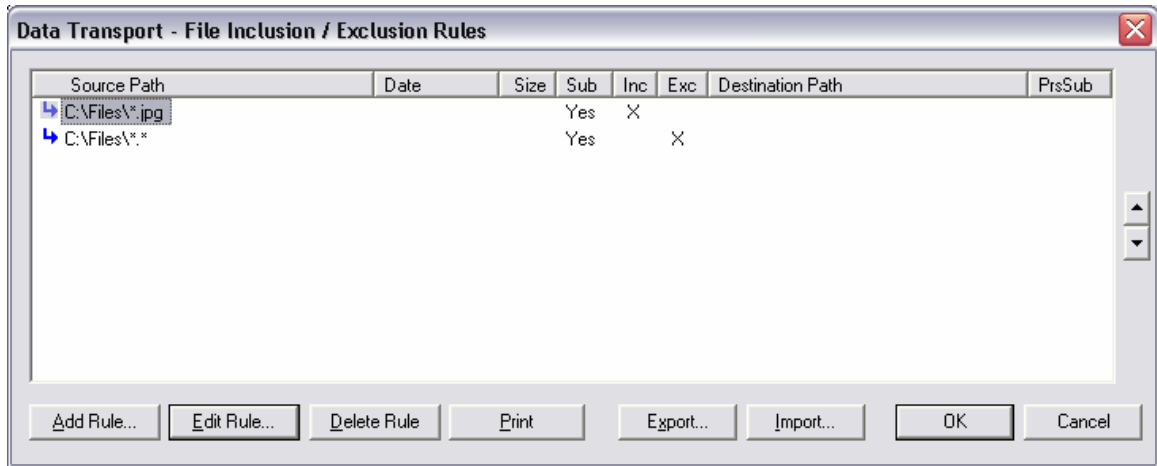
To delete or edit a rule, select the rule in the Source Path column to highlight it, then click **Delete Rule** or **Edit Rule**. Rules can be moved in the list to adjust precedence by using the up and down arrow buttons on the right side of the dialog box.

When finished, click **OK** or click **Cancel** to abandon the session. Rules in the list are saved when you save the current configuration

Export and Import File Rules

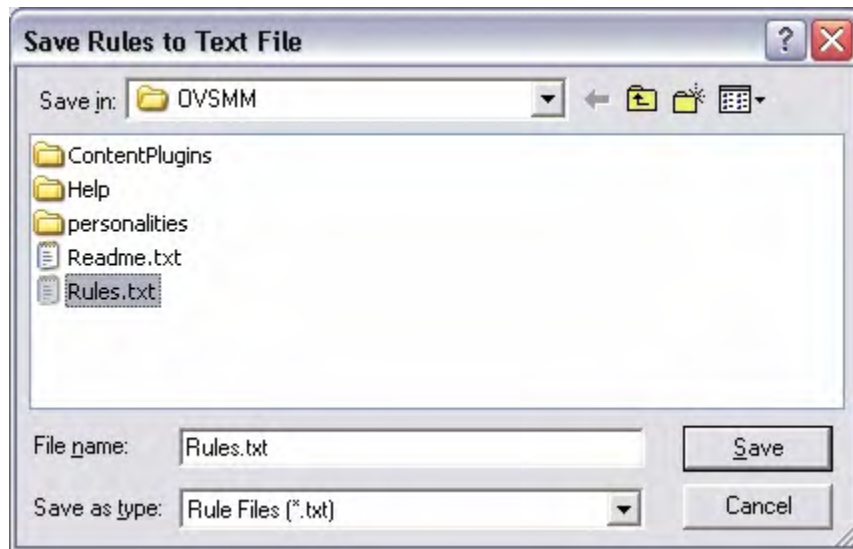
CM Settings Migration Manager can export and import File Rules to/from a text file.

Figure 22 Export and import file rules



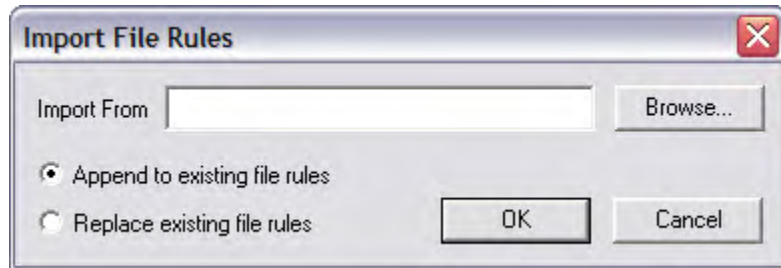
To export the list of entered File Rules, simply click on the export button. When you click on the export button the following save window is displayed. Save the file as type .txt or text.

Figure 23 Save rules to text file



To import File Rules to CM Settings Migration Manager click on the import button. After clicking on import, the following window will appear:

Figure 24 Import file rules



Browse to the location of the text file that you want to import. Choose whether you would like to Append to the existing File Rules in CM Settings Migration Manager, or have the File Rules that exist in the text file replace those File Rules that already exist in CM Settings Migration Manager.

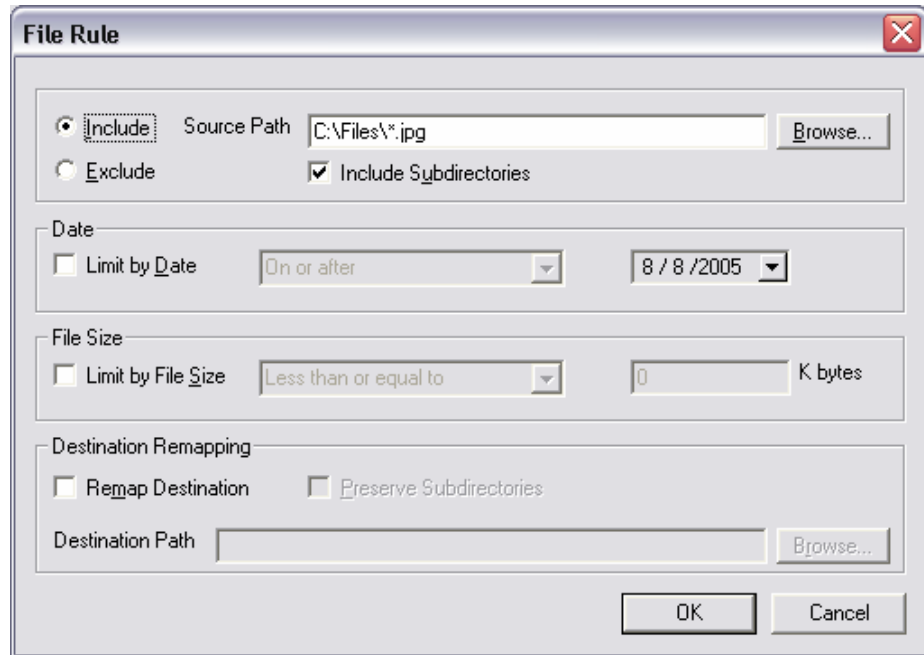
Below is an example of the file rule format that should be used when importing File Rules from a text file into CM Settings Migration Manager:

```
Start Rule
Rule Type: Include
Source Path: C:\files
File(s): *.doc
Date Limit: No
Size Limit: No
Preserve Subdirectories: No
Include Subdirectories: Yes
Remap Destination: No
End Rule
```

File Rule Dialog Box

When adding or editing a rule, the File Rule dialog box appears:

Figure 25 File Rule dialog box



Include/Exclude

Use the Include/Exclude radio button set to select the rule type.

Source Path

Enter the path of the files to be affected in the Source Path control. This control supports wildcard characters asterisk (*) and question mark (?) in the file name and file type portions of the path. The Source Path also supports Token Substitution.

Specify Multiple File Types in the Source Path

Separating files or file types with a semi colon (;) in the File Rule source path allows you to Include or Exclude multiple files or file types.

Here are some examples of multiple file type rules:

Table 5 Multiple file type rules

Include/Exclude	File or Folder Specification	Include Subdirectories	Result
INCLUDE	C:*.doc;*.xls;*.mdb	Yes	Will find and extract files on the C: drive that match the specified file types.
EXCLUDE	C:*.mp3;*.dll;*.exe	Yes	Will exclude files on the C: drive from being extracted that match the specified file types.

Specify Multiple File Types Using "Import File Rules"

This is an example of the file rule format that should be used when importing File Rules into CM Settings Migration Manager with multiple files or file types specified:

Start Rule

Rule Type: Include

Source Path: C:\files

File(s): *.doc;*.xls;*.mdb;*.ppt;*.rtf

Date Limit: No

Size Limit: No

Preserve Subdirectories: No

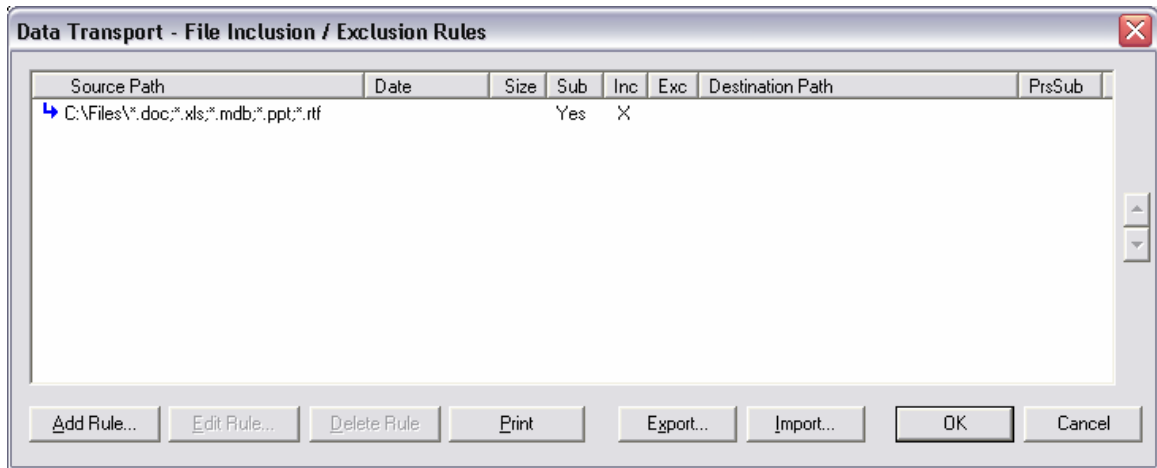
Include Subdirectories: Yes

Remap Destination: No

End Rule

After imported, the file rule will be displayed as follows in the File Rule dialog window.

Figure 26 File Rule dialog box



The Use of Wildcard Syntax in the Source Path

The common wildcards, question mark (?) (match one) and asterisk (*) (match any), can be used in file name syntax to specify files or groups of files. They can only be used in the file name and file type portions of the path. Here are some examples of valid wildcard usage:

Table 6 Wildcards in the Source Path syntax

Include/Exclude	File or Folder Specification	Include Subdirectories	Will Find Files Named
INCLUDE	C: \Readme.*	Yes	Readme.doc, Readme.wri, Readme.txt, etc., on the C: drive
INCLUDE	C: \Read*.doc	Yes	Readme.doc, Readthis.doc, etc., on the C: drive
INCLUDE	C: \Readme.???	Yes	Readme.doc, Readme.wri, Readme.txt, etc. on the C: drive. Will not include the files: Readme.html, Readme.jpeg, etc.

Include/ Exclude	File or Folder Specification	Include Subdirectories	Will Find Files Named
INCLUDE	C:\Read??.txt	Yes	Readme.txt on the C: drive. Will not find Readthis.txt

Using Token Substitution in File Rules

Complementing wildcards in File Rules is token substitution. Tokens can be substituted for explicit folder locations in constructing File Rules. This is useful since these folder locations can vary by operating system; tokens permit the rules to be cross operating system in nature.

Supported tokens are:

Table 7 Supported tokens

Token	Description
%DESKTOP%	The Desktop “directory”
%USERNAME%	The user name of the user that is selected for extraction.
%MYDOCUMENTS%	The default document storage folder
%MYMUSIC%	The default music storage folder
%MYPICTURES%	The default pictures storage folder
%MYVIDEOS%	The default videos storage folder
%WINDOWS%	The Windows directory (\Windows, \WINNT)
%SYSTEM%	The Windows\System folder (\Windows\system, \WINNT\system32, \Windows\System32)
%FIXEDDISKS%	All local fixed drives (<i>Can only be used in the source path of a file rule</i>)
%HOMEDRIVE%	Redirect files to a user's local or network home drive (<i>Used only in the Destination Path of a file rule</i>).
%USERPROFILE%	The user's profile folder (<i>Example: C:\Documents and Settings\Username</i>).

Here are some examples of token substitution usage:

Table 8 Token substitution usage

Include/Exclude	File or Folder Specification	Result
INCLUDE	%DESKTOP%*.*	Includes files and folders on the desktop regardless of Windows version
EXCLUDE	%FIXEDDISKS%*.mp3	Excludes all mp3 files on all fixed disks
INCLUDE	%USERPROFILE%\test.doc	Includes the test.doc file for the user that was selected for extraction.
INCLUDE	%MYDOCUMENTS%*.jpg	Includes all “.jpg” files in the selected user's My Documents folder.

Include Subdirectories

By default the Include Subdirectories check box is checked to include the subdirectories of the Source Path. If this is not desired behavior simply uncheck Include Subdirectories for each file rule.

Exceptions by File Date and Size

File Rules can be limited by Date and File Size by using the controls in the Date and File Size group boxes. This can reduce the load on intermediate storage and network bandwidth and enforce corporate standards.

In the examples in the following table, you can see how CM Settings Migration Manager can search for files and qualify their inclusion by limiting the migration to recent or reasonably sized files. The EXCLUDE example shows how files not supported by a migration can be specifically disallowed.

Table 9 Exceptions by file size or date

Include / Exclude	File or Folder Specification	Include Subdirectories	Since or Before Date	File Size Limits
INCLUDE	C:*.jpg	Yes	On or After 1/1/01	

Include / Exclude	File or Folder Specification	Include Subdirectories	Since or Before Date	File Size Limits
INCLUDE	C:*.avi	Yes	On or After 1/1/01	<= 10MB
EXCLUDE	C:*.mp3	Yes		

Remapping Files and Folders

File remapping gives CM Settings Migration Manager ultimate flexibility in migrating client data. To complement all the capabilities previously discussed, the migration administrator can clean up and organize client data as desired. In combination with wildcards and token substitution, almost any custom file moves can be accomplished — even between operating systems. Some examples will illustrate the point:

Table 10 Remapping files and folders

Include / Exclude	Source Path	Include Sub-directories	Destination Path	Preserve Sub-directories	Result
INCLUDE	C:*.wav	Yes	%MYDOCUMENTS%\FoundSoundfiles	No	All .wav files on the C: drive will be put into the FoundSoundfiles folder in the My Documents folder.

Include / Exclude	Source Path	Include Sub-directories	Destination Path	Preserve Sub-directories	Result
INCLUDE	D:*.gif	Yes	C:\FoundGifs	Yes	All .gif files on the D: drive will be put into C:\FoundGifs, preserving subdirectory structure from the source computer. For example, the file D:\Personal\Mypic.gif will be migrated to C:\FoundGifs\Personal\Mypic.gif

Files Are Only Copied Once

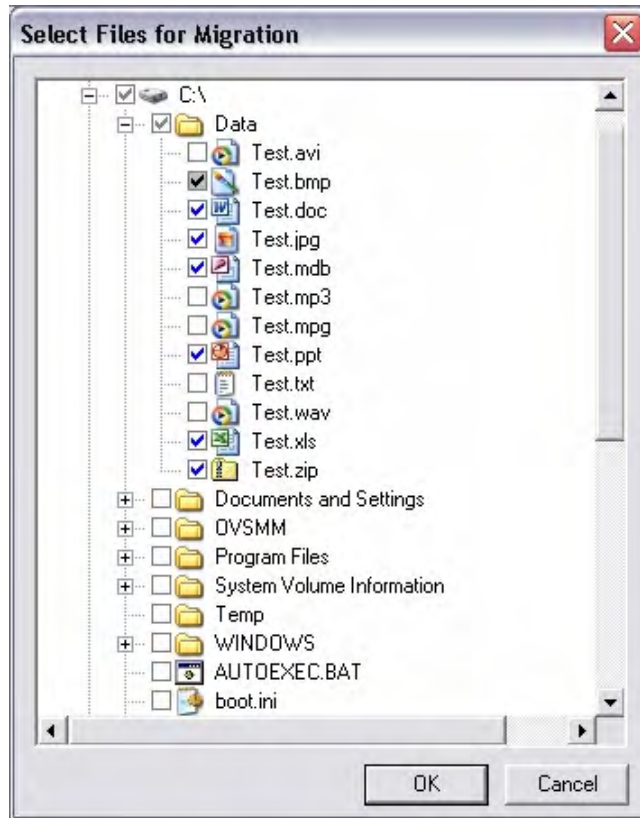
Although you can create two or more rules that may specify the same file or files for migration, only the rule with the higher precedence (closer to the top of the list) will migrate those files.

The Word documents that exist in `My Documents` will not be copied twice. Only Word documents found outside of the `My Documents` folder will be put in the `FoundDOCfiles` subfolder.

File Tree

The File Tree was designed for selection of files to be migrated in a single session. The familiar, intuitive Windows tree structure is used to navigate to directories and select user files to migrate to the new computer. File Tree selections are persistent for the computer on which they were created. Click **File Tree** to open the Select Files for Migration dialog box:

Figure 27 Select Files for Migration



Each drive, directory, and file can be selected by clicking on the check box next to its name. All files are available except those already affected by File Rules; File Rules take precedence over the File Tree. If all files in a drive or directory are selected, a blue check mark is shown. If some files in a drive or directory are selected, the check mark will be gray. If no files are selected, the check box will be empty.

Check boxes with gray backgrounds indicate that the file is controlled by a File Rule. If the box is empty, the File Rule is excluding the file; if the box is checked, the File Rule is including the file. These files are not available for checking in this window.

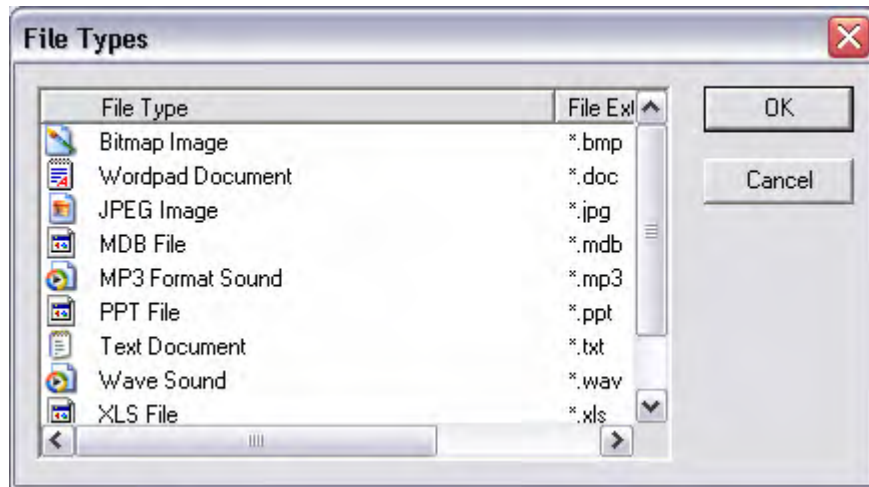
► File Rules take precedence over this File Tree function.

File Type Selection with File Tree

File types can also be specified for inclusion or exclusion by right-clicking any folder. Select whether to include or exclude from the pop-up menu:

A multiple-selection list box of the file types found in the selected folder and all subfolders appears as you see here:

Figure 28 File Types



Select one or more file types for inclusion or exclusion by highlighting the item then immediately clicking **OK**. To choose multiple file types, hold down the **shift** key while highlighting the file types then click **OK**.

Registry Rules

Registry Rules enables a migration administrator to identify registry keys and values or an entire registry branch to be included in a personality migration. Registry Rules are specified in the **Edit** → **Registry Rules** dialog and are saved when the configuration file is saved.

Migrating registry keys and values is a powerful functionality that will enable a migration administrator to customize the migration of specific settings that are housed in the registry and not directly supported by CM Settings Migration Manager content.

- ▶ Migrating some registry values and keys can result in an unstable environment on the target system. The use of Registry Rules is intended for a migration administrator with working knowledge of CM Settings Migration Manager and the Windows Registry.

Registry Rule Definitions

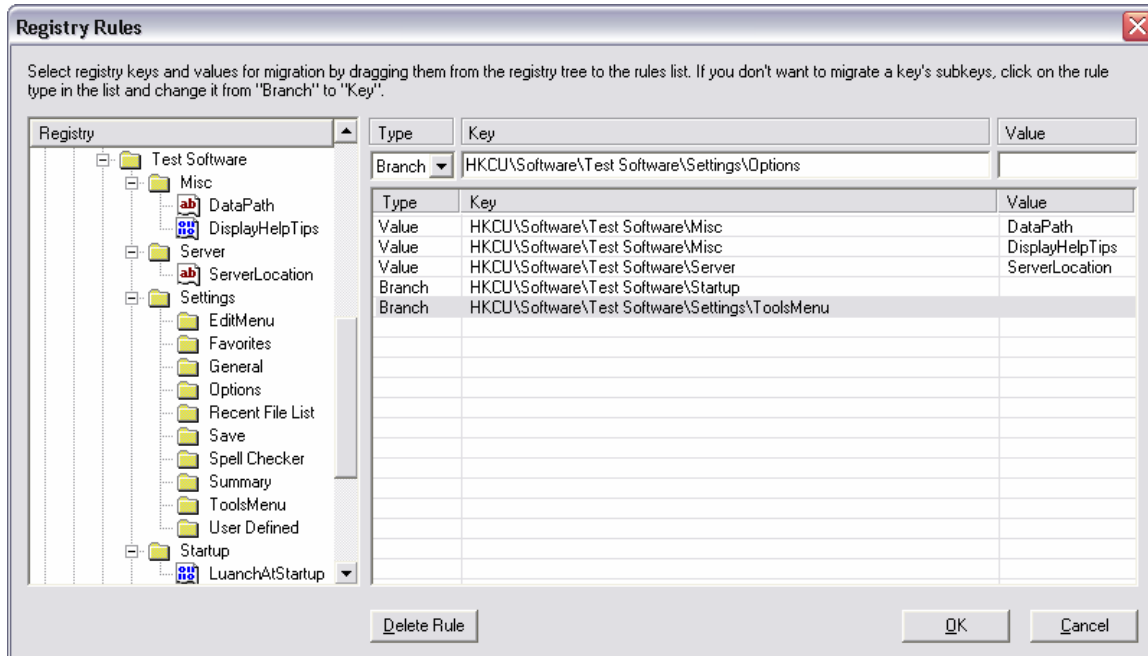
Registry (Window Pane)

The left pane of the Registry Rules interface displays the registry of the machine.

Type (Branch, Key, Value)

- **Branch:** Migrates the values in the specified key and all sub keys
- **Key:** Migrates the values in the specified key only
- **Value:** Migrates the specified value

Figure 29 Registry rule definitions



The Registry Rules supports both manual entry of registry keys and values as well as drag and drop functionality. To add a registry key or value as a registry rule for migration, locate the key or value you want to migrate in the registry window, select it and drag it to the to the registry rule list.

To manually enter a registry key or value, first select the type (Branch, Key, or Value), enter the registry path in the Key field, and then specify the value (if applicable). To add the rule to the list, click **Enter** on your keyboard or simply left click with your mouse cursor inside the registry rule list.

After the rules have been entered either manually or using the drag and drop functionality the type, path, and value can be edited by simply clicking on the section of the rule you wish to edit. To delete a registry rule, select the rule and click **Delete Rule**. To save the added registry rules, click **OK** and then save the configuration.

7 Back up Personality Changes and Restore Files

CM Settings Migration Manager supports functionality to perform incremental personality backups and selective data file restore. These features allow a user or migration administrator the ability to refresh and maintain a previously extracted personality and then selectively restore the files or perform a full personality injection.

Backup Changes

When executing the **Backup Changes** process to an existing personality, the source computer (the computer where the personality was originally extracted) is scanned for file changes that correspond to the selected or identified personality. Any associated files that have been added or changed on the source computer are updated in the personality. This allows the user or migration administrator to maintain a single personality backup without having to generate a new personality by performing another extraction.

▶ The incremental processing is done for data files only, and not for application or window's settings. When changes to files are backed up to the personality the settings (regardless if they have changed from when they were originally extracted) will be extracted to the personality again along with any changes to the data files. The extraction of application settings and window's settings has a minimal effect on the performance during an incremental data backup

Backup Changes and Password Protected Personalities

Password protected personalities will not prompt the user to enter a password when the personality is selected in Backup changes view or prior/during the backup process (automated or from the user interface). This is because personalities can only be backed up on the same computer from which the initial extraction was performed.

Backup Changes Process (User Interface)

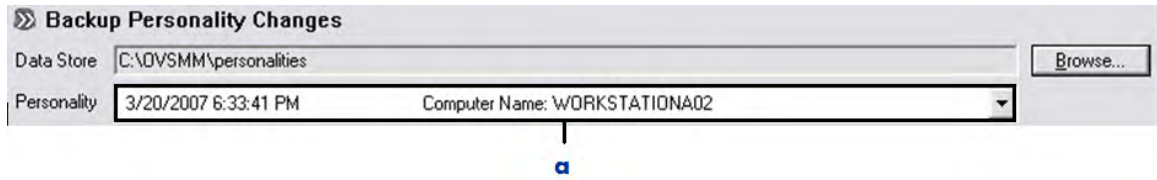
Backing up file changes associated with a personality first requires a personality to be extracted.

(For information about personality extraction, see Chapter 3, [Extracting using CM Settings Migration Manager](#).)

To backup changes to a personality invoke the CM Settings Migration Manager on the computer to which the personality was originally extracted. Select the **Backup Changes** icon in the active process bar. This will change the view to Backup Personality Changes.

- 1 Select the personality you wish to backup from the Personality drop-down field.

Figure 30 Personality selection field

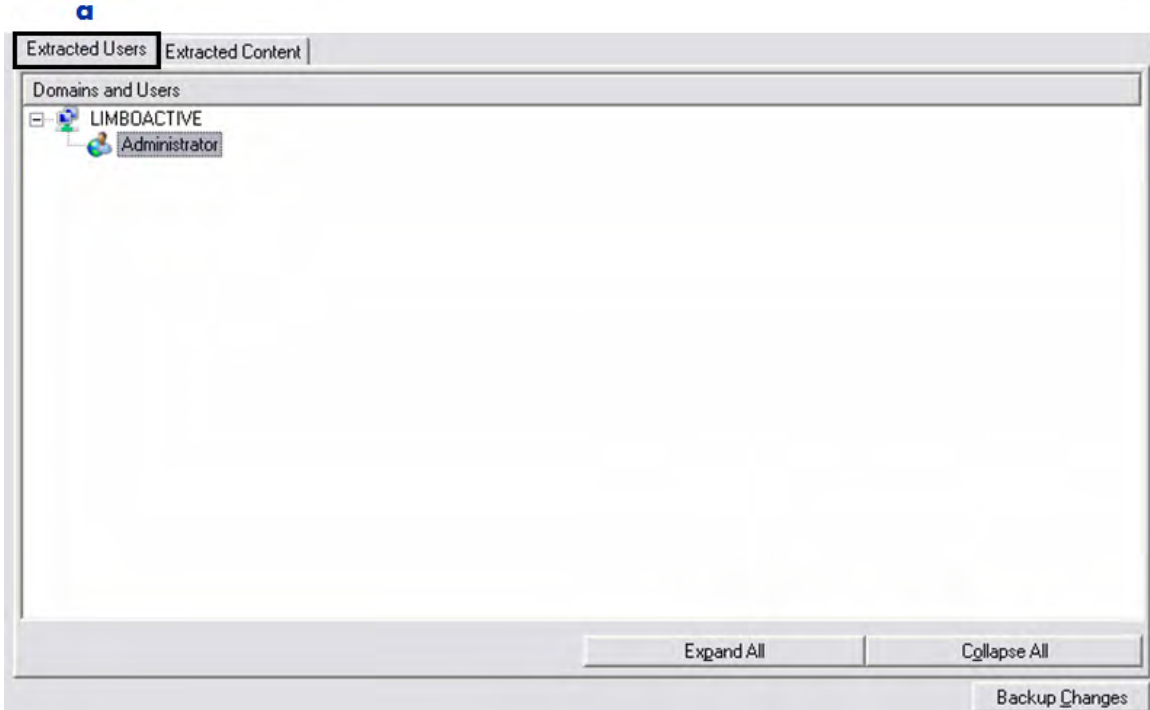


Legend

a Personality Selection Field — Click on the drop-down button to display all the personalities associated that are stored in the listed data store path.

- Make sure the data store path is correctly pointing to the location where the personality was extracted. If the personality is not available for selection it is possible the data store path is not correct. Simply browse to the correct data store location.
- 2 After the personality is selected, the users that were extracted with that personality are displayed in the Extracted Users tab window. Selecting the Extracted Content tab displays a list of the content that was selected for extraction. The settings and any changes made to the data files on the computer associated with this content (and any File Rules that were saved with the configuration) will be backed up to the personality.
- The Extracted Users tab and Extracted Content tab are for information and viewing purposes only.

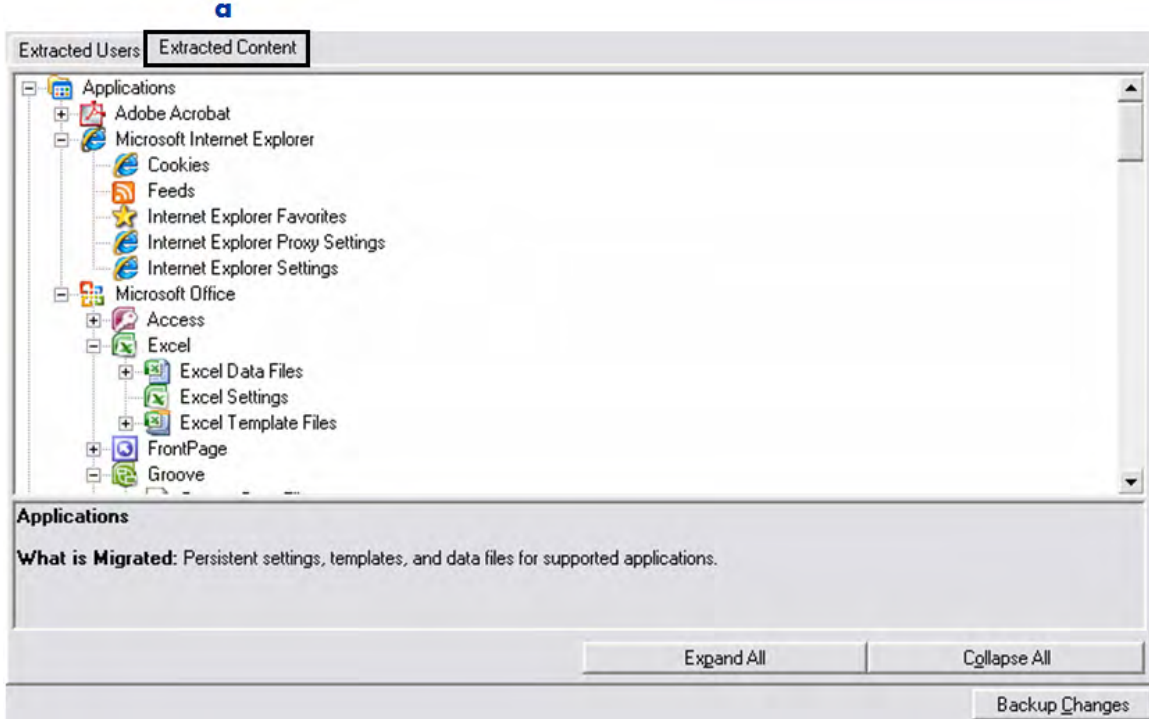
Figure 31 Extracted Users tab



Legend

■ Extracted Users – Displays the users that were extracted for the selected personality.

Figure 32 Extracted Content tab



Legend

- a** **Extracted Content** – Displays a list of content (Application Settings and Data Files) that was extracted for the selected personality.
 - 3** Click **Backup Changes**, and CM Settings Migration Manager will automatically backup the personality settings and any data files that have changed since the original extraction or last backup process was executed. When the backup process is complete, a log file is displayed containing detail of the personality backup.

Backup Changes Process (Automation)

A personality can be automatically backed up via command line using the CM Settings Migration Manager supported command line switch `/AUTOBACKUP`.

- ▶ The personality can only be backed up on the computer from which the personality extraction originated.

If a personality is not specified via command line, by default the `/AUTOBACKUP` switch will scan the personality data store location for a personality object that has a folder name associated with the computer name from which the backup process is being executed. If no personality is found based on the parameters used, or multiple personalities are found to exist, the process will terminate with the appropriate exit code.

- ▶ By default when CM Settings Migration Manager extracts a personality, the personality folder is created with the name of the computer from which the extraction took place.

Sample “Personality Backup” Command Lines

```
Start /w se.exe /AutoBackup \\DataStore\PersonalityName
```

This command line will perform a backup of file changes associated with the personality specified in the data store path.

```
Start /w se.exe /AutoBackup
```

This command line will look for a personality with a name that matches the name of the computer from which the command line is executed and backup the appropriate file changes.

- ▶ For a list of supported command lines, their functionality, and more information on using command lines to automate a CM Settings Migration Manager migration, please read Chapter 8, [Command Line Interface](#).

Restore Files

Restore Files enables the user or migration administrator to search, examine, and selectively restore the files contained in an extracted or backed up personality.

By default, files are restored based on the parameters used to extract the files (File Rules, or Application Data File Content). This means that if `file.xyz` was extracted from `C:\Data`, then by default selecting to restore that file will

result in the directory location being preserved and the file being restored to C:\Data. CM Settings Migration Manager file restore does support an option, however, to override the default file restore behavior and restore files to alternate locations as identified by the user or migration administrator.

- ▶ The ability to selectively restore files is only functional via the CM Settings Migration Manager user interface.

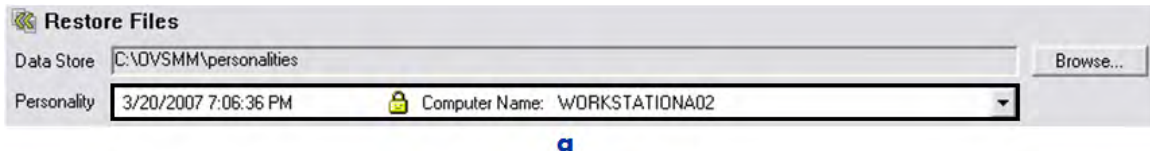
Restore Files and Password Protected Personalities

Password protected personalities will prompt the user to enter a password when the personality is selected in the Restore Files view. The password must be entered in order to view the contents of the personality.

Restore Files Process

- 1 After a personality has been created, the data files associated with that personality can be selectively restored using the Restore Files view in the CM Settings Migration Manager user interface. Select the personality from which files will be restored from the Personality drop-down list.

Figure 33 Restore Files



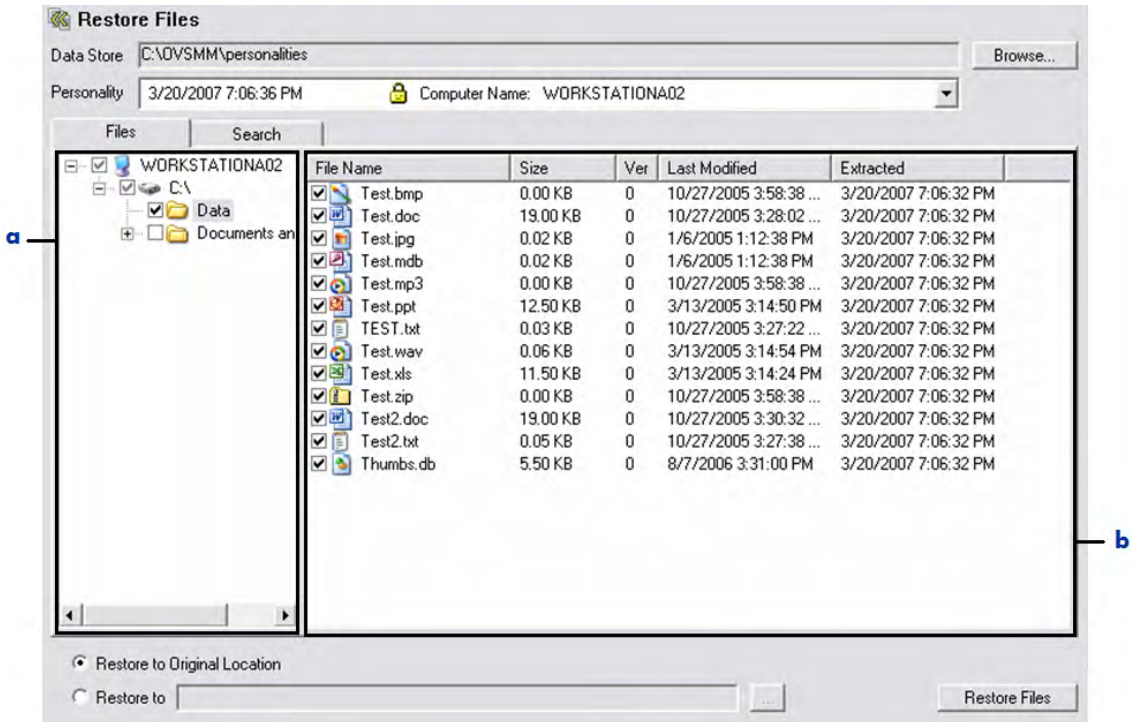
Legend

- **Personality Selection Field** — Click on the drop-down button to display all the personalities associated that are stored in the listed data store path

After the personality is selected, the data files can be accessed via the Files tab. All files and folders that were extracted are displayed in this window.

- 2 Expand each drive and folder to display the files that were extracted in that folder.
- 3 Select the data files you wish to restore and then click **Restore Files**. This will restore the selected files.

Figure 34 Restore Files



Legend

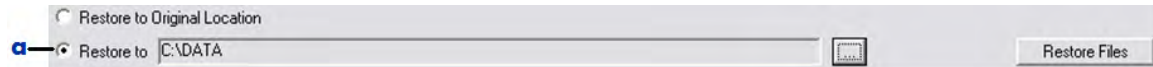
- a** Displays the drives and folders associated with the extracted personality data. Select a folder to display the data file contents.
- b File Selection** — Select the files that will be restored. Double click on the file to change the file restore location, or to select a different version of the file to restore.

Redirect Files during File Restore

There are two methods of redirecting files to alternate locations. You can either set a global redirection path, or redirect individual files.

To set a global redirection on selected files click **Restore to** in the Restore Files UI and browse to where all selected files will be restored.

Figure 35 Select global Restore To



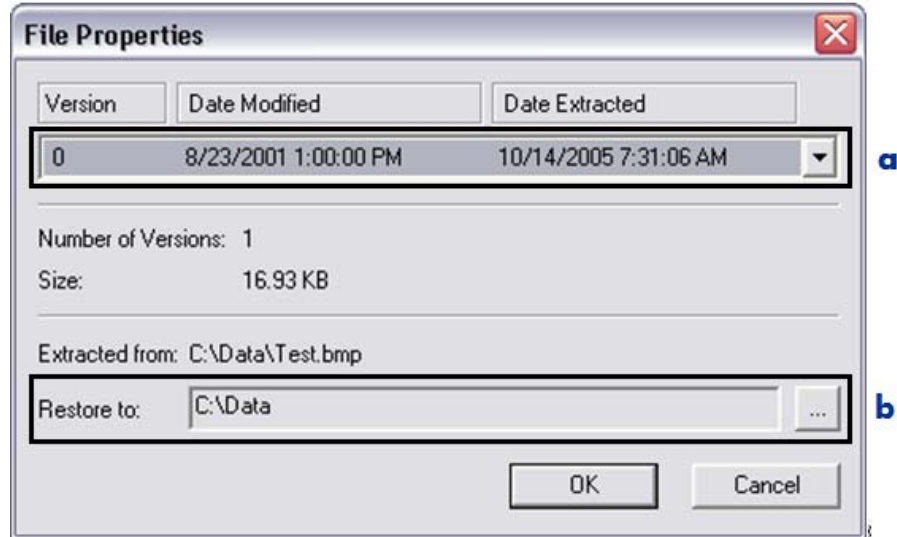
Legend

- Select the global **Restore To** option and browse to where the selected data files will be restored.

To redirect specific files to a new location, double click on the file to display the properties dialog. Browse to the desired path for the file and click **OK**. The file will be restored to the path that was specified. Please note that the path specified to redirect the selected file will take precedence over the global restore path.

- ▶ When Backup Changes is used, each version of the file is stored in the personality. Use the drop down field to select the version of the file you wish to restore. By default, the most current version of the file will be restored and displayed in File Properties.

Figure 36 File Properties



Legend

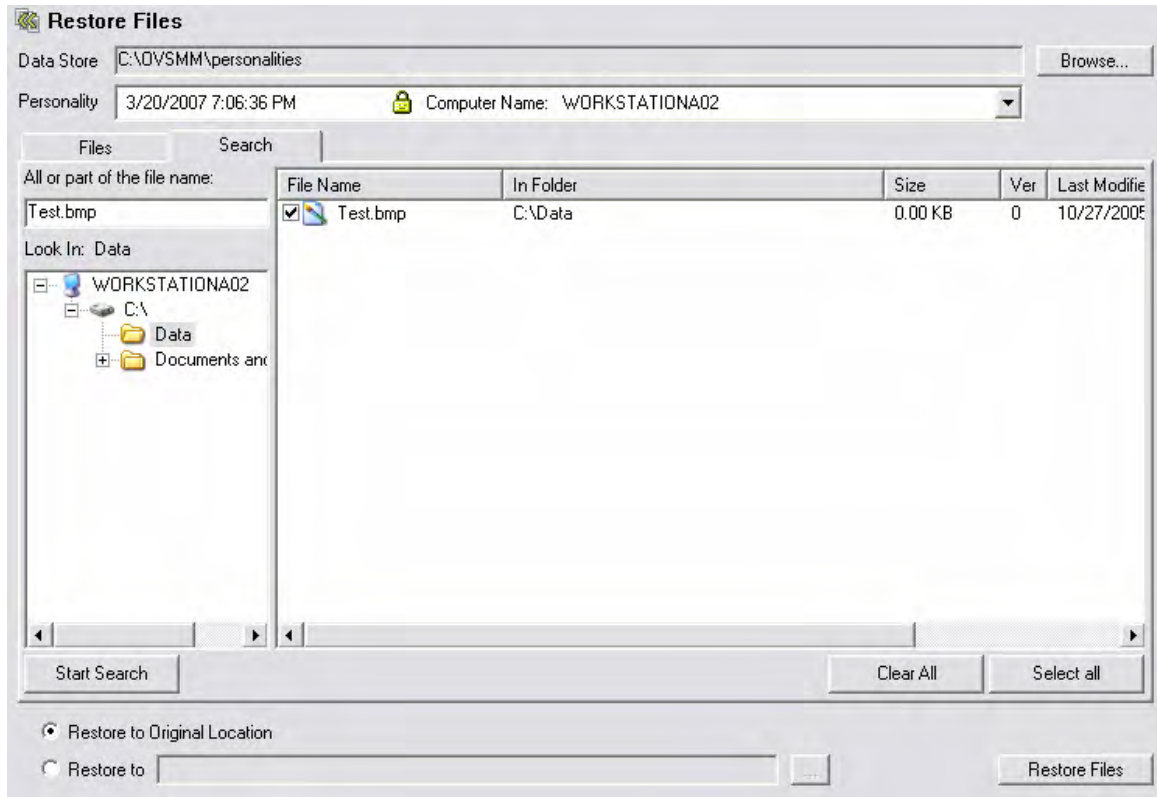
- a File Selection and Properties** — Select the version of the file you wish to restore using the drop down field.
- b Browse** — Use the browse button to select a restore path for the file. By default, the file will be restored to the same path from which it was extracted.
- c File Restore Path** — Displays the path where the file will be restored.

File Search

To perform a search for files contained in the selected personality, click the “Search” tab accessible from the Restore Files user Interface.

The user, or migration administrator can search the selected personality for files based on file name or file type. Select a drive or folder you wish to search and enter the name of the file or file type in the search field. Click **Start Search** to start the search. The files that are found based on the entered parameters will be displayed in the screen to the right. If no parameters are entered in the search field, then all files that exist in the selected drive or folder will be displayed.

Figure 37 Restore Files

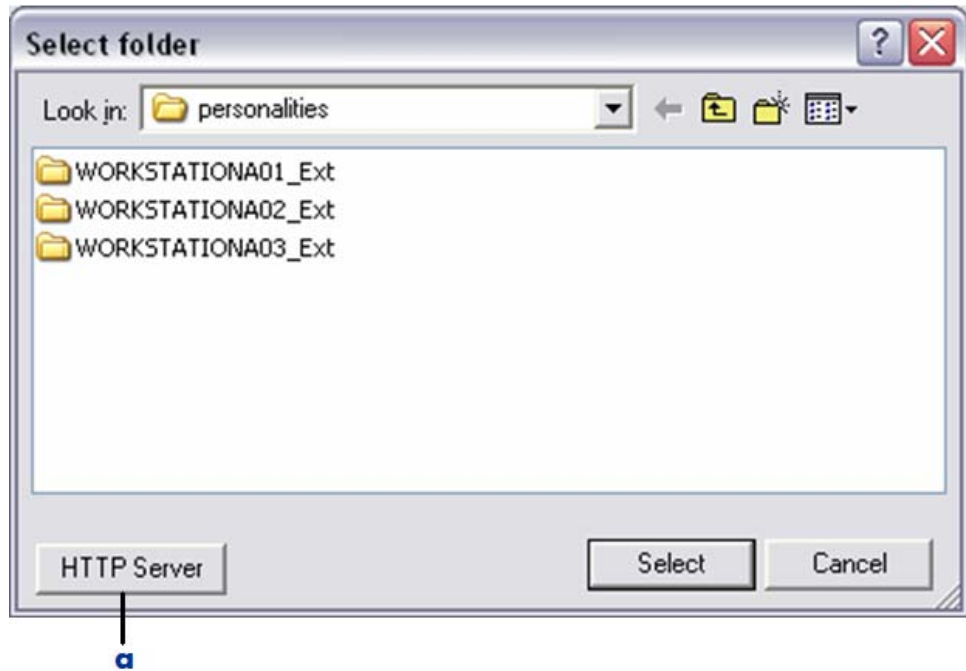


To restore the files that are displayed as a result of the performed search, simply check the files and then click **Restore Files**.

Browse HTTP Personalities

To restore files or perform a search on a personality that was extracted via HTTP, the data store must be changed to the correct HTTP server location. To change the data store location to HTTP, click **Browse** next to the Data Store field while in Restore Files view. Next click the HTTP Server button to open the HTTP Options dialog. Enter the appropriate Server Name, Folder Name, and Port Number.

Figure 38 Click HTTP Server to open HTTP Options dialog box



Legend

- a** HTTP Server — Select HTTP Server to open the HTTP Options dialog window.

Clicking the HTTP Server button displays the dialog shown in Figure 39 on page 93 (*sample entries shown*).

Figure 39 HTTP Options dialog box



The image shows a standard Windows-style dialog box titled "HTTP Options". It features a close button (red X) in the top right corner. The dialog contains three text input fields, each with a label to its left: "Server Name" containing "TestServer", "Folder Name" containing "Upload", and "Port Number" containing "3466". At the bottom center, there are two buttons: "OK" and "Cancel".

Server Name: Enter the HTTP Server name or IP address in this field.

Folder Name: Enter the name of the folder where the personalities are stored.

Port Number: Enter the appropriate port number in this field.

8 Command Line Interface

CM Settings Migration Manager supports operation from the command line for environments in which more automatic operation is needed. Using the command-line interface enables CM Settings Migration Manager to be incorporated into scripts to automatically perform an extraction, injection, or backup. Coupled with CM Settings Migration Manager's powerful configuration features, technicians can manage large-scale migrations and personality backups with minimum interaction.

Overview

The most common usage for command-line switches is to group them together in a batch file. By grouping together the command-lines for the Extraction a computer's personality can be extracted by running only one file, without any user interaction. The command-line switches can also be launched from network login scripts when users log into the network. By calling these batch files from login scripts, administrators can remotely perform Extractions and Injections without having to physically visit the PC.

Automating Personality Migrations

Using command line switches, CM Settings Migration Manager can be set up to automatically extract, inject or backup the personality of the currently logged in user, a user that is not logged in to the computer, or multiple users. The personality is extracted on the source PC and automatically injected on the target PC. This section of the guide details all supported command line switches followed by batch file examples that will assist you in the development of an automated migration process.

- ▶ Many of the functionality descriptions of the command line switches will reference exit code returns. The full list of supported exit codes is available in Appendix B, [Exit Codes](#). We recommend that exit codes be included in the batch files that you develop. Examples of how exit codes are incorporated in batch files are also available in Appendix B, [Exit Codes](#).
- ▶ To extract, inject or backup a personality for a user or users that are not currently logged in to the machine, the user that is performing the extraction, injection or backup must have Local Administrator Rights. Also note that CM Settings Migration Manager requires elevated administrator privileges when running on Windows Vista.

CM Settings Migration Manager Application Command Line Switches

/AUTOEXTRACT (Extraction Only)

The `/AUTOEXTRACT` command, if used without another supported extraction command switch will automatically perform a personality extraction of the user that is currently logged on to the computer. It is important to note that the default CM Settings Migration Manager configuration will be used if a configuration file is not specified in the command line. Therefore, administrators will have to configure CM Settings Migration Manager with the desired settings. See Chapter 3, [Extracting using CM Settings Migration Manager](#) for details on the CM Settings Migration Manager configuration file.

Example 1 – Command Line using /AUTOEXTRACT

```
START /w se.exe /autoextract
```

/AUTOINJECT (Injection Only)

The `/AUTOINJECT` command, if used without another supported injection command switch will automatically perform a personality injection for the user that is currently logged on to the computer. CM Settings Migration Manager searches the default data store for personalities with a user name that matches the user name of the currently logged on user. If only one matching personality containing that username is found the personality for that user is injected. If more than one matching personality is found, or no matching personalities are found, CM Settings Migration Manager will terminate and return an appropriate exit code.


Example 2 – Command Line using /AUTOINJECT

```
START /w se.exe /autoinject
```

/PASSWORD

The `/PASSWORD` command is used to automatically assign a password to a personality during extraction and injection. The specified password must be 7

to 15 characters in length and is case sensitive. When the `/PASSWORD` command is used for extraction and the password is either missing or invalid CM Settings Migration Manager will terminate and return an appropriate exit code. When the `/PASSWORD` command is used for extraction or injection, and the password is either missing or invalid, CM Settings Migration Manager will terminate and return an appropriate exit code. If the `/PASSWORD` command is used to inject a personality and the specified password does not match the password assigned to the personality, CM Settings Migration Manager will terminate and return an appropriate exit code.

 Injections will only occur if the password specified using the `/PASSWORD` command switch matches the password assigned to the personality.

Example 3 — Extraction Command Line using `/PASSWORD`

```
START /w se.exe /autoextract /PASSWORD password
```

Example 4 — Injection Command Line using `/PASSWORD`

```
START /w se.exe /autoinject /PASSWORD password
```

`/CONFIG`

The `/CONFIG` command-line argument is used to specify a configuration file when performing an automatic extraction or injection. The form of the argument is: `/CONFIG path\file`. If the specified path to the configuration file is invalid CM Settings Migration Manager will terminate and return an appropriate exit code.

Path\file is the path and filename of the desired configuration file. The path can also specify a mapped drive. A complete command might look like the following example, where `Z:\` is a mapped drive on a remote server.

Example 5 — Extraction Command Line using `/CONFIG`

```
START /w se.exe /autoextract /CONFIG "Z:\CM Settings Migration Manager Installation\Test.CFG"
```

Example 6 — Injection Command Line using `/CONFIG`

```
START /w se.exe /autoinject /CONFIG "Z:\CM Settings Migration Manager Installation\Test.CFG"
```

/IMPORT (Extraction Only)

The `/IMPORT` command imports a predefined list of File Rules via the `autoextract` command line. The text file that contains the File Rules uses the same format as the rules that are created and exported using the CM Settings Migration Manager File Rules dialog. See Chapter 6, Using File and Registry Rules for detailed information on the correct file rule format to use when exporting importing File Rules into CM Settings Migration Manager.

Example 7 – Extraction Command Line using `/IMPORT`

```
START /w se.exe /autoextract /import Z:\rules.txt
```

/SOURCE (Injection only)

The `/SOURCE` command is used to specify the computer name that was associated with the extracted personality. This command is typically used in combination with the `/ALLUSERS` command line switch and only on Injection. When used in conjunction with the `/ALLUSERS` switch, all the users associated with the personality that matches the specified computer name following the `/SOURCE` command will automatically inject. If there are no matching personalities or if there is more than one matching personality then CM Settings Migration Manager will terminate and return an appropriate exit code.

Example 8 – Injection Command Line using `/SOURCE`

```
START /w se.exe /autoinject /SOURCE computername /AllUsers
```

/INCLUDEUSER (Extraction)

When used during extraction, the `/INCLUDEUSER` command will extract the personalities for each user that is specified following the command. If there are no usernames that match the users specified in the command line then CM Settings Migration Manager will terminate and return the appropriate exit code. If at least one user specified matches a username on the computer being extracted, but one or more other specified users do not match any usernames on the computer, the extraction process will continue and extract the personalities of the users that matched and the extraction log that gets created following an extraction will display the users that were not extracted.

- ▶ Usernames and Domain names with spaces must be contained in quotes when specified following the `/INCLUDEUSER` command. This is referenced in [Example 11](#) below.

Example 9 – Extraction Command Line using `/INCLUDEUSER` (Multiple users specified)

```
START /w se.exe /autoextract /INCLUDEUSER user1 user2 user3
```

Example 10 – Extraction Command Line using `/INCLUDEUSER` (Users specified with domain)

```
START /w se.exe /autoextract /INCLUDEUSER domain\user1  
domain\user2
```

Example 11 – Extraction Command Line using `/INCLUDEUSER`

(Users and domains containing spaces)

```
START /w se.exe /autoextract /INCLUDEUSER "domain 1\user 1"  
"domain 1\user 2"
```

`/INCLUDEUSER` (Injection)

When used during injection, the `/INCLUDEUSER` command will inject the users from the personality for each matching username that follows the command. CM Settings Migration Manager will only inject the matching users if all specified users exist within a single personality. Using the `/SOURCE` command allows you to further narrow the possible personalities when comparing usernames. If all users specified with `/INCLUDEUSER` exists in more than one personality, CM Settings Migration Manager will terminate and return the appropriate exit code.

- ▶ Usernames and Domain names with spaces must be contained in quotes when specified following the `/INCLUDEUSER` command. This is referenced in [Example 14](#) on page 101.

Example 12 – Injection Command Line using `/INCLUDEUSER` (Multiple users specified with domain)

```
START /w se.exe /autoinject /SOURCE computername /INCLUDEUSER  
domain\user1 domain\user2 domain\user3
```

Example 13 – Injection Command Line using /INCLUDEUSER

This example illustrates how you can inject a user's personality into another username. This can be useful if the usernames associated with the extracted personalities are being changed to different usernames as part of the migration process.

```
START /w se.exe /autoinject /SOURCE computername /INCLUDEUSER  
user1:user1a user2:user2a user3:user3a
```

Example 14 – Injection Command Line using /INCLUDEUSER

This example illustrates how you can inject a user's personality to another username or domain. This can be useful if the usernames associated with the extracted personalities are being changed to different usernames as part of the migration process or are being migrated to a machine that is registered to a different domain. Please note that in this example the entire user string must be contained in quotes as a result of the username containing a space.

```
START /w se.exe /autoinject /SOURCE computername /INCLUDEUSER  
"domain1\user 1:domain2\user 1a" "domain1\user 2:domain2\user  
2a"
```

/ALLUSERS (Extraction)

The /ALLUSERS command will extract all existing users on the computer.

Example 15 – Extraction Command Line using /ALLUSERS

```
START /w se.exe /autoextract /ALLUSERS
```

/ALLUSERS (Injection)

The /ALLUSERS command will inject all users in a specified personality. The personality can be specified using the /SOURCE command.

Example 16 – Injection Command Line using /ALLUSERS

```
START /w se.exe /autoinject /SOURCE computername /ALLUSERS
```

/EXCLUDEUSER (Extraction)

The `/EXCLUDEUSER` command allows you to exclude specified users from being extracted. This command is most commonly used in conjunction with the `/ALLUSERS` command. If by using this switch it results in no users being extracted, CM Settings Migration Manager will terminate and return an appropriate exit code.

Example 17 – Extraction Command Line using /EXCLUDEUSER

In this example all the users on the computer will be extracted unless a user matches the username that follows the `/EXCLUDEUSER` command. Multiple usernames can also be specified using the `/EXCLUDEUSER` command.

```
START /w se.exe /autoextract /ALLUSERS /EXCLUDEUSER  
domain\user1
```

/EXCLUDEUSER (Injection)

The `/EXCLUDEUSER` command allows you to exclude specified users from being injected. This command is most commonly used in conjunction with the `/ALLUSERS` command. If by using this switch it results in no users being injected, CM Settings Migration Manager will terminate and return an appropriate exit code.

Example 18 – Injection Command Line using /EXCLUDEUSER

In this example all the users in the specified personality will be injected unless a user matches the username that follows the `/EXCLUDEUSER` command. Multiple usernames can also be specified using the `/EXCLUDEUSER` command. Specifying the domain name is optional. If the domain name is not specified then all users matching the username are excluded.

```
START /w se.exe /autoinject /Source computername /ALLUSERS  
/EXCLUDEUSER domain\user1
```

/EXCLUDELOCAL (Extraction)

The `/EXCLUDELOCAL` command allows you to exclude local users from being extracted. This command is most commonly used in conjunction with the `/ALLUSERS` command. If by using this switch it results in no users being extracted, CM Settings Migration Manager will terminate and return an appropriate exit code.

Example 19 – Extraction Command Line using /EXCLUDEUSER

In this example all the users on the computer will be extracted except for those users that are defined as a local user.

```
START /w se.exe /autoextract /ALLUSERS /EXCLUDELOCAL
```

/EXCLUDELOCAL (Injection)

The /EXCLUDELOCAL command allows you to exclude local users from being injected. This command is most commonly used in conjunction with the /ALLUSERS command. If by using this switch it results in no users being injected, CM Settings Migration Manager will terminate and return an appropriate exit code.

Example 20 – Injection Command Line using /EXCLUDEUSER

In this example all the users in the specified personality will be injected except for local users.

```
START /w se.exe /autoinject /Source computername /ALLUSERS  
/EXCLUDELOCAL
```

/EXCLUDEUNUSED (Extraction Only)

The /EXCLUDEUNUSED command allows you to exclude user profiles that have not been used in a specified number of days. This command is most commonly used in conjunction with the /ALLUSERS command.

Example 21 – Extraction Command Line using /EXCLUDEUNUSED

In this example all the users on the computer will be extracted except for those users whose profiles have not been used in 25 days.

```
START /w se.exe /autoextract /ALLUSERS /EXCLUDEUNUSED 25
```

/DOMAIN (Injection Only)

The /DOMAIN command allows you to redirect injected users from an old domain name to a new domain name. Multiple domain redirections can be specified as illustrated in [Example 23](#) on page 104. This command is typically used in conjunction with the /ALLUSERS command on injection.

- ▶ Domain names with spaces must be contained in quotes when specified following the /DOMAIN command. This is referenced in [Example 24](#) below.

Example 22 – Injection Command Line using /DOMAIN

In this example all the users contained in the specified personality who belong to *olddomain* will be injected to the new specified domain.

```
START /w se.exe /autoinject /SOURCE computername /ALLUSERS  
/DOMAIN olddomain:newdomain
```

Example 23 – Injection Command Line using /DOMAIN

In this example all the users contained in the specified personality who belongs to *olddomain* and *olddomain2* will be injected to the new specified domain.

```
START /w se.exe /autoinject /SOURCE computername /ALLUSERS  
/DOMAIN olddomain:newdomain olddomain2:newdomain2
```

Example 24 – Injection Command Line using /DOMAIN (*specified domain name contains a space*)

In this example all the users contained in the specified personality who belong to *old domain* will be injected to the new specified domain. The domain names that are specified following the /DOMAIN command switch have spaces and therefore the entire string must be contained in quotes.

```
START /w se.exe /autoinject /SOURCE computername /ALLUSERS  
/DOMAIN "old domain:new domain"
```

/DATASTORE

This /DATASTORE command can be used to specify an alternate location for the CM Settings Migration Manager data store. The path to the data store is specified following the command line switch. This use of the /DATASTORE switch will override the path in the configuration file. If the path specified following the /DATASTORE switch does not exist, it will be created. If it cannot be created, CM Settings Migration Manager will terminate and return an appropriate exit code.

- ▶ By design CM Settings Migration Manager does not extract files at or below the folder level that you specify for the Data Store. Please take this into account when specifying a data store location.

Example 25 – Command Line using /DATASTORE

```
START /w se.exe /autoextract /DATASTORE \\server\personalities
```

/EXCLUDEDISKS (Injection Only)

This /EXCLUDEDISKS command enables you to specify letters associated with drives that you do not want CM Settings Migration Manager to inject data to during the personality injection.

- ▶ You cannot prevent injection to drive C.

Example 26 – Command Line using /EXCLUDEDISKS

```
START /w se.exe /autoinject /EXCLUDEDISKS D;E;F
```

/INJECTTOLOGGEDINUSER (Injection Only)

This /INJECTTOLOGGEDINUSER command enables you to force an injection of a user's personality to the user that is logged on to the target machine even if the username does not match the username of the user that is being injected.

- ▶ A personality with more than one user cannot be injected to the logged on user using the /INJECTTOLOGGEDINUSER command line switch. If there is more than one user in the personality being injected, the use of the /INJECTTOLOGGEDINUSER switch will result in an appropriate exit code.

Example 27 – Command Line using /INJECTTOLOGGEDINUSER

```
START /w se.exe /autoinject /IncludeUser User1  
/InjectToLoggedInUser
```

/AUTOBACKUP (Personality Backup Only)

The `/AUTOBACKUP` command allows you to backup changes to a specified personality via command line.

Example 28 – Command Line using /AUTOBACKUP

```
Start /w se.exe /AUTOBACKUP \\DataStore\PersonalityName
```

This command line will perform a backup of file changes associated with the personality specified in the data store path.

```
Start /w se.exe /AUTOBACKUP
```

This command line will look for a personality with a name that matches the name of the computer from which the command line is executed and backup the appropriate file changes.

/EXCLUDEDOMAIN

The `/EXCLUDEDOMAIN` command is used to exclude users from being injected or extracted if they are associated with the specified domain following the `/EXCLUDEDOMAIN` command line switch.

Example 29 – Command Line using /AutoExtract

```
Start /w se.exe /AutoExtract /AllUsers /ExcludeDomain DomainX
```

This command line will perform an extraction of `AllUsers`, excluding those associated with `DomainX`.

/NOCANCEL

The `/NOCANCEL` command is used to hide the CM Settings Migration Manager cancel button that is displayed on the progress bar during extraction.

Example 30 – Command Line using /NoCancel

```
Start /w se.exe /AutoExtract /AllUsers /NoCancel
```

This command line will hide the progress bar during extraction.

/HIDESTATUS

The `/HIDESTATUS` command is used to hide the CM Settings Migration Manager progress bar for extraction and injection.

Example 31 – Command Line using `/HideStatus`

```
Start /w se.exe /AutoExtract /AllUsers /HideStatus
```

This command line will hide the progress bar during extraction.

HTTP Command Line Usage

```
/http servername:port uniquestring [overwrite:]
```

This command line launches an HTTP extraction that is used in combination with `/AUTOEXTRACT`, `/AUTOBACKUP` or launches an injection that is used in combination with `/AUTOINJECT`. To use HTTP you must also use `/AUTOEXTRACT`, `/AUTOBACKUP`, or `/AUTOINJECT` commands.

Personalities and log files will be stored in the pre-assigned Upload folder on the HTTP Server. Optionally, you can use the command lines `/HTTPDIR` to specify an alternate folder where the Personalities and log files will be stored.

Command Line Definitions

Servername


This represents the NetBIOS name or IP address of the system running the HTTP Server.

Port

This represents the port number used by the HTTP Server.

UniqueString

This represents the unique name of the personality being extracted or injected.

 The specified Unique String cannot contain any spaces or quotations.

Overwrite

This command line switch is optional and is used in conjunction with `/AUTOEXTRACT`. Use `overwrite:yes` to overwrite an existing personality

with the same UniqueString personality name. Use `overwrite:no` to prevent overwriting an existing personality name with an identical personality name. If `overwrite:` is not used the default behavior is not to overwrite an existing personality.

/HTTPDIR

Used to specify a directory where personalities are stored on the HTTP Server. The default directory is `Upload`.

► The HTTP server must be configured to use the specified directory.

Example 32 – Command Line using /HTTP

Extraction

```
start /w se.exe /http ServerName:3466 UniqueString /AutoExtract  
/AllUsers
```

Injection

```
start /w se.exe /http ServerName:3466 UniqueString /AutoInject  
/AllUsers
```

Example 33 – Command Line using /HTTPDir

Extraction

```
start /w se.exe /http ServerName:3466 UniqueString /AutoExtract  
/AllUsers /HTTPDir DataStore
```

Injection

```
start /w se.exe /http ServerName:3466 UniqueString /AutoInject  
/AllUsers /HTTPDir DataStore
```

A Response Files

Using Response Files with CM Settings Migration Manager Automation

Since there are limits to command line length in some environments and since the potential exists for complex command lines to exceed those limits, CM Settings Migration Manager supports command line response files. A response file contains command line arguments (switches) that are accessed indirectly. Command line response file support reflects the long-standing Microsoft response file behavior. An at sign (@) followed by a file specification will designate a response file to include in the logical command line.

Response File Example

The response file `z:\response.txt` contains:

```
/IncludeUser user1 /Config z:\filename.cfg
```

The logical command line processed by CM Settings Migration Manager is:

```
Start /w se.exe /autoextract /IncludeUser user1 /Config  
z:\filename.cfg
```

Example 34

This example will extract the personality of the user that is specified in the response file.

```
start /w se.exe /autoextract @z:\response.txt
```


B Exit Codes

Using Exit Codes with CM Settings Migration Manager Automation

Exit codes are used during CM Settings Migration Manager automation to provide the technician performing the automation more information that can assist in resolving issues concerning the installation or operation of CM Settings Migration Manager.

CM Settings Migration Manager Application Event Exit Codes

Table 11 Application Event Exit Codes

Exit code	Description
4	File write failure
5	Out of memory
6	Out of Disk Space
7	Unknown error
12	Process aborted
14	Unable to process the users registry data
16	Unable to create user
246	Unable to create domain user
247	Unable to determine logged in user
248	Unable to open response file

Exit code	Description
249	Injecting to a Windows 9x system is not supported by CM Settings Migration Manager
251	No personalities exist for specified user on <code>/autoinject</code> command switch or not all of the requested users could be found in any personality
252	No user exists for <code>/autoextract</code> command switch
253	Invalid command line option
254	Improper installation
255	Insufficient rights to execute CM Settings Migration Manager
257	More than one matching personality exists for specified <code>/SOURCE</code> on <code>/AUTOINJECT</code> command switch
260	Insufficient rights to migrate users not currently logged on.
261	Invalid response file
263	Password is out of range must be between 7-15 letters, numbers, and/or underscores ("_")
264	<code>/AUTOEXTRACT</code> and <code>/AUTOINJECT</code> cannot be used at the same time
265	Invalid password
266	Import file not found
267	Import parameter not correct
268	No content items were selected for extraction
269	Error processing password
270	Multiple personalities exist for specified user(s) on injection

Exit code	Description
271	Configuration file not found
272	Invalid configuration file parameter
273	Template file is obsolete
274	Unable to open template file
275	Invalid data store entry
276	Configuration file is read-only
277	Cannot create default configuration file
278	Invalid configuration file
279	Cannot save configuration file
280	Cannot write to data store
284	CM Settings Migration Manager is already running on this computer
285	Client must be updated before continuing. Invoke the CM Settings Migration Manager manually to update.
286	No personalities exist for specified /SOURCE on /AUTOINJECT command switch
287	Invalid /EXCLUDEUSER parameter
288	Invalid /INCLUDEUSER parameter
289	Extraction failed
290	Injection failed
291	Unable to open file TxxTxp.ptp

Exit code	Description
292	Multiple redirections to the same user
293	Server disconnected
294	An obsolete personality was specified
295	Invalid /DOMAIN usage. Source domain and target domain must be separated by a ":". Only valid with the /AUTOINJECT switch
296	Domain usage conflict. Cannot use /DOMAIN with /INCLUDEUSER switch if /INCLUDEUSER contains user redirection
297	Invalid Exclude Disk Parameter
298	Invalid Data Store
299	The Receiver timed out waiting for Sender to connect
300	The Sender timed out waiting to connect to a Receiver
301	Receiver lost connection with Sender
302	Invalid buffer size
303	Connection string is in use. Another process is already listening for the specified connection string
304	Invalid connection string
305	Multiple Network Interface Cards are not supported. Please disable the Network Interface Cards that will not be used for migration.
307	Personality already exists at data store location
310	Invalid network options

Exit code	Description
311	SE_INVALIDHTTPSWITCH - No port or no IP address or computer name
312	SE_OUTOFMEMORY
313	SE_OUTOFDISKSPACE
314	SE_FILEWRITEFAILED
315	SE_INVALIDHTTPSWITCHNOSTRING - No unique string found with http switch
316	SE_HTTPINVALIDONWIN95
317	SE_INVALIDHTTPUSE - The HTTP switch cannot be used with /DATASTORE, or /SOURCE switches
318	SE_UINOTALLOWED - The User Interface has been restricted
319	SE_FILEACCESSDENIED - The operating system denied access to the specified file
320	SE_HTTP_ERROR
321	Invalid /EXCLUDEDOMAIN switch
322	Spaces are not allowed in the upload directory
323	CM Settings Migration Manager does not support backup on non-NT platforms
324	HTTP server does not allow directory listing
325	No personalities found.
326	Load user registry hive failed
327	/INJECTTOLOGGEDINUSER can only be used with a single user.

Exit code	Description
328	File too large to migrate

Applying Exit Codes to Batch Files

The CM Settings Migration Manager exit codes listed above can be applied to batch files using simple "IF ERRORLEVEL" commands.

Example Batch File Incorporating CM Settings Migration Manager Exit Codes

The example below displays how exit codes are used within a CM Settings Migration Manager batch file. The text that is displayed for each exit code can be changed if needed.

▶ When using the command "IF ERRORLEVEL" in a batch file, the exit codes must be listed with the greater number first in order for it to be called properly.

CM Settings Migration Manager Application exit codes must be entered in order following the command line:

```
"Start /w se.exe /autoextract /config Z:\filename.cfg
```

Extraction Batch File with Exit Codes

There are many supported exit codes that can be used in an CM Settings Migration Manager batch file. The following example is intended to illustrate how those exit codes are included in a batch file. In the following example only two applications event exit codes are used. We recommend that you incorporate all of the available exit codes into your batch files.

▶ This same format can also be used for an injection batch file

Example

```
@echo off
echo ...Extracting Personality

START /w se.exe /autoextract /IncludeUser testuser /config
Z:\FileName.cfg

IF ERRORLEVEL 253 Goto Err253
IF ERRORLEVEL 247 Goto Err247
cls
goto EXIT

:Err247
cd c:\
C:
Echo Unable to determine logged in user
pause
cls
goto EXIT

:Err253
cd c:\
C:
Echo Invalid command line option
pause
cls
goto EXIT

:EXIT
cls
```


C Application Support Notes

CM Settings Migration Manager provides a checklist of supported settings and files in the extraction and injection views. These items, known as personality objects, determine exactly which elements of a computer personality are included in a migration.

The following sections, MS Office Support Notes and Other Support Notes, provide important usage notes as well as restrictions or limitations to keep in mind for each personality object supported in this release of CM Settings Migration Manager.

Microsoft Office Supported Applications

- Microsoft Access 95, 97, 2000, XP, 2003, 2007
- Microsoft Excel 95, 97, 2000, XP, 2003, 2007
- Microsoft FrontPage 2000, XP, 2003, 2007
- Microsoft Groove 2007
- Microsoft InfoPath 2003, 2007
- Microsoft OneNote 2003, 2007
- Microsoft Outlook (Windows Messaging), 97, 98, 2000, XP, 2003, 2007
- Microsoft PowerPoint 95, 97, 2000, XP, 2003, 2007
- Microsoft Project 98, 2000, 2002, 2003, 2007
- Microsoft Publisher 2003, 2007
- Microsoft Word 95, 97, 2000, XP, 2003, 2007

Other Supported Applications

- Act! 2000
- Adobe Acrobat 4.x, 5.x, 6

- Acrobat Reader 4.x, 5.x, 6, 7
- MSN Messenger 7.0, 7.5
- Yahoo Messenger 7.0, 7.5, 8
- Lotus Notes 5.x, 6.x
- Microsoft Internet Explorer 4.01, 5.x, 6.x, 7.x
- Microsoft NetMeeting 2.x, 3.x
- Microsoft Outlook Express 5.x, 6.x
- Mozilla Firefox 1.x, 2.x
- Netscape 4.5, 4.6, 4.7, 6.x
- Norton AntiVirus 2000
- Norton AntiVirus Corporate Edition
- Visio 2000, 2002, 2003, 2007
- WinZip 7.x, 8.x, 9.0
- WordPerfect Office 2000
 - Corel Utilities
 - Dragon NaturallySpeaking for WordPerfect
 - Quattro Pro 9
 - WordPerfect 9

Windows Options

- Desktop Shortcuts
- Dial-Up Networking
- Folder Options
- Local Printer Logging
- Mapped Network Drives
- Network and Shared Printer Connections
- Taskbar and Start Menu
 - Quick Launch Bar Shortcuts

- Taskbar and Start Menu Settings
- User Documents and Media Files
 - My Documents
 - My Pictures
 - My Music
 - My Videos
- Windows Address Book

Control Panel (Settings)

- Accessibility Options
- Display
 - Appearance and Themes
 - Background
 - Visual Effects
- Internet Options
- Keyboard
 - Keyboard Languages
 - Keyboard Settings
- Mouse Settings
 - Buttons and Motions
 - Pointers and Schemes
- Power Management
- Regional Settings
- Sounds
- Time Zones

Microsoft Office Support Notes

Following are important usage notes to keep in mind for Microsoft Office.

Microsoft Office

Migrates data files, templates, and persistent settings for the following Office applications:

- MS Access
- MS Excel
- MS FrontPage
- MS Groove
- MS InfoPath
- Office Assistant Settings
- Office Shortcut Bar
- MS OneNote
- MS Outlook
- MS PowerPoint
- MS Project
- MS Publisher
- MS Word

The following versions of Office are supported

Office 95, Office 97, Office 2000, Office XP, Office 2003 and Office 2007

Cross version migration is supported for the following paths:

- Office 95 to Office 97
- Office 95 to Office 2000
- Office 95 to Office XP
- Office 95 to Office 2003
- Office 97 to Office 97
- Office 97 to Office 2000

- Office 97 to Office XP
- Office 97 to Office 2003
- Office 97 to Office 2007
- Office 2000 to Office 2000
- Office 2000 to Office XP
- Office 2000 to Office 2003
- Office 2000 to Office 2007
- Office XP to Office XP
- Office XP to Office 2003
- Office XP to Office 2007
- Office 2003 to Office 2003
- Office 2003 to Office 2007
- Office 2007 to Office 2007

Microsoft Access

Migrates Access data files, persistent settings, and templates.

The following file types are migrated:

Access Data Files

.accda, .accdb, .accdc, .ade, .adp, .mad, .maf, .mag, .mam, .maq, .mar, .mas, .mat, .mav, .maw, .mda, .mdb, .mdbhtml, .mde, .mdt, .mdw

Access Template Files

.accdt, .mdn, mdz, .wizhtml

The following versions of Access are supported:

Access 95, Access 97, Access 2000, Access XP, Access 2003 and Access 2007

Cross version migration is supported for the following paths:

- Access 95 to Access 97
- Access 95 to Access 2000
- Access 95 to Access XP
- Access 95 to Access 2003
- Access 95 to Access 2007

- Access 97 to Access 97
- Access 97 to Access 2000
- Access 97 to Access XP
- Access 97 to Access 2003
- Access 97 to Access 2007
- Access 2000 to Access 2000
- Access 2000 to Access XP
- Access 2000 to Access 2003
- Access 2000 to Access 2007
- Access XP to Access XP
- Access XP to Access 2003
- Access XP to Access 2007
- Access 2003 to Access 2003
- Access 2003 to Access 2007
- Access 2007 to Access 2007

Microsoft Excel

Migrates Excel data files, persistent settings, and templates.

The following file types are migrated:

Excel Data Files

.csv, .dif, .dqy, .iqy, .oqy, .rqy, .slk, .thmx, .xla, .xlam, .xlb, .xlc, .xld, .xlk, .xll, .xlm, .xls, .xlsb, .xlshtml, .xlsm, .xlsx, .xlv, .xlw, .xps

Excel Template Files

.xlt, .xltx, .xltm

The following versions of Excel are supported:

Excel 95, Excel 97, Excel 2000, Excel XP, Excel 2003 and Excel 2007

Cross version migration is supported for the following paths:

- Excel 95 to Excel 97
- Excel 95 to Excel 2000
- Excel 95 to Excel XP

- Excel 95 to Excel 2003
- Excel 95 to Excel 2007
- Excel 97 to Excel 97
- Excel 97 to Excel 2000
- Excel 97 to Excel XP
- Excel 97 to Excel 2003
- Excel 97 to Excel 2007
- Excel 2000 to Excel 2000
- Excel 2000 to Excel XP
- Excel 2000 to Excel 2003
- Excel 2000 to Excel 2007
- Excel XP to Excel XP
- Excel XP to Excel 2003
- Excel XP to Excel 2007
- Excel 2003 to Excel 2003
- Excel 2003 to Excel 2007
- Excel 2007 to Excel 2007

Microsoft FrontPage

Migrates FrontPage data files, persistent settings, and templates.



Selecting to migrate FrontPage data files will result in the migration of all .html and .htm files on your local disk drives unless the policies **Exclude User's Temporary Directory** and **Exclude User's Temporary Internet Directory** are set (default). This may not be welcomed behavior. If migrating all .html and .htm files is not desired you can use File Rules to exclude these file types entirely, or selectively in specified file folders on the local disk.

The following file types are migrated:

FrontPage Data Files

.asa, .asp, .cdx, .fphtml, .htm, .html, .htx, .shtm, .shtml, .stm

FrontPage Template Files

.tem

The following versions of FrontPage are supported:
FrontPage 2000, FrontPage XP, FrontPage 2003

Cross version migration is supported for the following paths:

- FrontPage 2000 to FrontPage 2000
- FrontPage 2000 to FrontPage XP
- FrontPage 2000 to FrontPage 2003
- FrontPage XP to FrontPage XP
- FrontPage XP to FrontPage 2003
- FrontPage 2003 to FrontPage 2003

Microsoft Groove

Migrates Groove data files and persistent settings.

The following file types are migrated:

Groove Data Files

.grv, .gsa, .vcg

The following versions of Groove are supported
Groove 2007

Cross version migration is supported for the following paths:

- Groove 2007 to Groove 2007

Microsoft InfoPath

Migrates InfoPath data files, persistent settings, and templates.

The following file types are migrated:

InfoPath Data Files

.xml, .xsf

InfoPath Template Files

.xsn

The following versions of InfoPath are supported
InfoPath 2003 and InfoPath 2007

Cross version migration is supported for the following paths:

- InfoPath 2003 to InfoPath 2003
- InfoPath 2003 to InfoPath 2007
- InfoPath 2007 to InfoPath 2007

Office Assistant Settings

Migrates Persistent settings for Microsoft Office Assistant.

- ▶ CM Settings Migration Manager does not migrate the specific assistant, only the settings associated with the office assistant.

Office Shortcut Bar

Migrates Persistent settings for Office Shortcut Bar.

Microsoft OneNote

Migrates OneNote data files and persistent settings.

The following file types are migrated:

OneNote Data Files

.mht, .one, .onetoc

The following versions of OneNote are supported:

OneNote 2003 and OneNote 2007

Cross version migration is supported for the following paths:

- OneNote 2003 to OneNote 2003
- OneNote 2003 to OneNote 2007
- OneNote 2007 to OneNote 2007

Microsoft Outlook

Migrates Outlook data files, Outlook Mail Clients and associated files, and Outlook persistent settings.

- ▶ Services on the target/injection machine must be the same as the services on the source/extraction machine. For example, if the source machine has Outlook set to Corporate Workgroup, then Outlook on the target machine must also be set to Corporate Workgroup.

The following file types are migrated:

Outlook Files

.ics, .msg, .oft, .pst (Inactive), .vcs

- ▶ If you migrate .pst files without selecting Outlook Mail Clients and Associated Files, your active .pst files will be migrated, but they will not be made active on the target computer.

Outlook Mail Clients and Associated Files

Outlook Exchange and Internet mail clients are migrated, including Windows messaging as an exchange client. Active personal folders (.pst files), address books (.pab files), and offline address books (.oab files) are also migrated.

The following versions of Outlook are supported

Windows Messaging, Outlook 97, Outlook 98, Outlook 2000, Outlook XP, Outlook 2003 and Outlook 2007

Cross version migration is supported for the following paths:

- Windows Messaging to Outlook 97
- Windows Messaging to Outlook 98
- Windows Messaging to Outlook 2000
- Outlook 97 to Outlook 97
- Outlook 97 to Outlook 98
- Outlook 97 to Outlook 2000
- Outlook 97 to Outlook XP
- Outlook 97 to Outlook 2003
- Outlook 97 to Outlook 2007
- Outlook 98 to Outlook 98
- Outlook 98 to Outlook 2000
- Outlook 98 to Outlook XP
- Outlook 98 to Outlook 2003
- Outlook 98 to Outlook 2007

- Outlook 2000 to Outlook 2000
- Outlook 2000 to Outlook XP
- Outlook 2000 to Outlook 2003
- Outlook 2000 to Outlook 2007
- Outlook XP to Outlook XP
- Outlook XP to Outlook 2003
- Outlook XP to Outlook 2007
- Outlook 2003 to Outlook 2003
- Outlook 2003 to Outlook 2007
- Outlook 2007 to Outlook 2007

Microsoft PowerPoint

Migrates PowerPoint data files, persistent settings, and templates.

The following file types are migrated:

PowerPoint Data Files

.pps, .ppt, .pphtml, .pptmp, .pptx, .ppz, .pwz

PowerPoint Template Files

.pot, .pothtml, .potm, .potx

The following versions of PowerPoint are supported

PowerPoint 95, PowerPoint 97, PowerPoint 2000, PowerPoint XP, PowerPoint 2003 and PowerPoint 2007

Cross version migration is supported for the following paths:

- PowerPoint 95 to PowerPoint 97
- PowerPoint 95 to PowerPoint 2000
- PowerPoint 95 to PowerPoint XP
- PowerPoint 95 to PowerPoint 2003
- PowerPoint 95 to PowerPoint 2007
- PowerPoint 97 to PowerPoint 97
- PowerPoint 97 to PowerPoint 2000
- PowerPoint 97 to PowerPoint XP

- PowerPoint 97 to PowerPoint 2003
- PowerPoint 97 to PowerPoint 2007
- PowerPoint 2000 to PowerPoint 2000
- PowerPoint 2000 to PowerPoint XP
- PowerPoint 2000 to PowerPoint 2003
- PowerPoint 2000 to PowerPoint 2007
- PowerPoint XP to PowerPoint XP
- PowerPoint XP to PowerPoint 2003
- PowerPoint XP to PowerPoint 2007
- PowerPoint 2003 to PowerPoint 2003
- PowerPoint 2003 to PowerPoint 2007
- PowerPoint 2007 to PowerPoint 2007

Microsoft Project

Migrates Project data files, persistent settings, and templates.

The following file types are migrated:

Project Data Files

.mpd, .mpp, .mpw, .mpx

Project Template Files

.mpt

The following versions of Project are supported

Project 98, Project 2000, Project 2002, Project 2003 and Project 2007

Cross version migration is supported for the following paths:

- Project 98 to Project 98
- Project 98 to Project 2000
- Project 98 to Project 2002
- Project 98 to Project 2003
- Project 98 to Project 2007
- Project 2000 to Project 2000
- Project 2000 to Project 2002

- Project 2000 to Project 2003
- Project 2000 to Project 2007
- Project 2002 to Project 2002
- Project 2002 to Project 2003
- Project 2002 to Project 2007
- Project 2003 to Project 2003
- Project 2003 to Project 2007
- Project 2007 to Project 2007

Microsoft Publisher

Migrates Publisher data files and persistent settings.

The following file types are migrated:

Publisher Data Files

.pub, .pubhtml, .pubmhtml

The following versions of Publisher are supported

Publisher 2003 and Publisher 2007

Cross version migration is supported for the following paths:

- Publisher 2003 to Publisher 2003
- Publisher 2003 to Publisher 2007
- Publisher 2007 to Publisher 2007

Microsoft Word

Migrates Word data files, persistent settings, and templates.

The following file types are migrated:

Word Data Files

.doc, .dochtml, .docm, .docx, .gly, .rtf, .wbk, .wiz

Word Template Files

.dot, .dothtml, .dotm, .dotx

The following versions of Word are supported:

Word 95, Word 97, Word 2000, Word XP, Word 2003 and Word 2007

Cross version migration is supported for the following paths:

- Word 95 to Word 97
- Word 95 to Word 2000
- Word 95 to Word XP
- Word 95 to Word 2003
- Word 95 to Word 2007
- Word 97 to Word 97
- Word 97 to Word 2000
- Word 97 to Word XP
- Word 97 to Word 2003
- Word 97 to Word 2007
- Word 2000 to Word 2000
- Word 2000 to Word XP
- Word 2000 to Word 2003
- Word 2000 to Word 2007
- Word XP to Word XP
- Word XP to Word 2003
- Word XP to Word 2007
- Word 2003 to Word 2003
- Word 2003 to Word 2007
- Word 2007 to Word 2007

Other Supported Application and Operating System Notes

Following are important usage notes to keep in mind for each content item included in this release of CM Settings Migration Manager.

Act! 2000

Migrates ACT! 2000 persistent settings and ACT! 2000 files.

The following file types are migrated:

ACT! 2000 Files

.adt, .cly, .env, .gly, .lbl, .mpr, .rep, .rpt, .tpl, .usr,
.wpa

ACT! 2000 Database Files

.dbf, .adb, .adx, .blb, .ddb, .ddf, .ddx, .edb, .edx, .gdb,
.gdx, .hdb, .hdx, .lck, .mdx, .rel, .rem, .rex, .sdb, .sdx,
.tdb, .tdx

Adobe Acrobat

Migrates Adobe Acrobat files and persistent settings for Adobe Acrobat and Adobe Acrobat Reader.

The following file types are migrated:

Adobe Acrobat Data Files

.akf, .apf, .eps, .fdb, .fdf, .joboptions, .ndx, .p7c, .pdf,
.pdx, .pfx, .ps, .sequ

The following versions of Adobe Acrobat are supported

Acrobat Reader 4.x, Acrobat Reader 5.x, Acrobat Reader 6.x, Acrobat Reader 7.x, Adobe Acrobat 4.x, Adobe Acrobat 5.x, Adobe Acrobat 6.0.

Cross version migration is supported for the following paths:

- Adobe Acrobat 4.x to 4.x
- Adobe Acrobat 4.x to 5.x
- Adobe Acrobat 4.x to 6.0
- Adobe Acrobat 5.x to 5.x
- Adobe Acrobat 5.x to 6.0
- Adobe Acrobat 6.0 to 6.0
- Acrobat Reader 4.x to 4.x
- Acrobat Reader 4.x to 5.x
- Acrobat Reader 4.x to 6.x
- Acrobat Reader 4.x to 7.x

- Acrobat Reader 5.x to 5.x
- Acrobat Reader 5.x to 6.x
- Acrobat Reader 5.x to 7.x
- Acrobat Reader 6.x to 6.x
- Acrobat Reader 6.x to 7.x
- Acrobat Reader 7.x to 7.x

MSN Messenger

Migrates locally stored, unencrypted settings.

The following versions of MSN Messenger are supported
MSN Messenger 7.0 and MSN Messenger 7.5

Cross version migration is supported for the following paths:

- MSN Messenger 7.x to 7.x

Yahoo Messenger

Migrates account Username, Password, and locally stored settings.

The following versions of Yahoo Messenger are supported
Yahoo Messenger 7, Yahoo Messenger 7.5, Yahoo Messenger 8

Cross version migration is supported for the following paths:

- Yahoo Messenger 7.x to Yahoo Messenger 7.x
- Yahoo Messenger 7.x to Yahoo Messenger 8
- Yahoo Messenger 8 to Yahoo Messenger 8

Lotus Notes 5.x, 6.x

Migrates Lotus Notes data files and persistent settings. Only user ID files in the default location and the last used user ID file are migrated.



If the migration of user ID files stored in non-default locations is desired this can be accomplished using CM Settings Migration Manager File Rules.

Cross version migration is supported for the following paths:

- Lotus Notes 5.x to Lotus Notes 5.x
- Lotus Notes 5.x to Lotus Notes 6.x
- Lotus Notes 6.x to Lotus Notes 6.x

Microsoft Internet Explorer

Migrates Internet Explorer persistent settings, cookies, proxy settings, and favorites.

The following versions of Internet Explorer are supported:
IE 4.01, IE 5.x, IE 6.x, IE 7.x

Cross version migration is supported for the following paths:

- IE 4.01 to IE 4.01
- IE 4.01 to IE 5.x
- IE 4.01 to IE 6.x
- IE 4.01 to IE 7.x
- IE 5.x to IE 5.x
- IE 5.x to IE 6.x
- IE 5.x to IE 7.x
- IE 6.x to IE 6.x
- IE 6.x to IE 7.x
- IE 7.x to IE 7.x

Microsoft NetMeeting

Migrates Microsoft NetMeeting settings.

The following file types are migrated:

NetMeeting Whiteboard Files

.nmw, .wht

The following versions of Microsoft NetMeeting are supported
Microsoft NetMeeting 2.x, Microsoft NetMeeting 3.x

Cross version migration is supported for the following paths:

- Microsoft NetMeeting 2.x to Microsoft NetMeeting 2.x
- Microsoft NetMeeting 2.x to Microsoft NetMeeting 3.x
- Microsoft NetMeeting 3.x to Microsoft NetMeeting 3.x

Microsoft Outlook Express

Migrates Microsoft Outlook Express persistent settings, Windows Address Book, mail, and news files.

The following file types are migrated:

Outlook Express Files

.eml, .nws, Outlook Express Stationery

The following versions of Microsoft Outlook Express are supported:

Outlook Express 5.x, Outlook Express 6.x

Cross version migration is supported for the following paths:

- Microsoft Outlook Express 5.x to Microsoft Outlook Express 5.x
- Microsoft Outlook Express 5.x to Microsoft Outlook Express 6.x
- Microsoft Outlook Express 6.x to Microsoft Outlook Express 6.x

Mozilla Firefox

Migrates Mozilla Firefox persistent settings, files, bookmarks, cookies, extensions.

The following versions of Mozilla Firefox are supported

Firefox 1.x, 2.x

Cross version migration is supported for the following paths:

- Firefox 1.x to 1.x
- Firefox 1.x to 2.x
- Firefox 2.x to 2.x

Netscape

Migrates Netscape data files and persistent settings

The following versions of Netscape Communicator are supported:
Netscape 4.5, Netscape 4.6, Netscape 4.7, and Netscape 6.x

Cross version migration is supported for the following paths:

- Netscape 4.5 to Netscape 4.5
- Netscape 4.5 to Netscape 4.6
- Netscape 4.5 to Netscape 4.7
- Netscape 4.5 to Netscape 6.x
- Netscape 4.6 to Netscape 4.6
- Netscape 4.6 to Netscape 4.7
- Netscape 4.6 to Netscape 6.x
- Netscape 4.7 to Netscape 4.7
- Netscape 4.7 to Netscape 6.x
- Netscape 6.x to Netscape 6.x

Norton Antivirus

Migrates Persistent settings for Norton AntiVirus

The following versions of Norton AntiVirus are supported:
Norton AntiVirus 2000

Norton AntiVirus Corporate Edition

Migrates custom scans and user settings for Norton AntiVirus Corporate Edition.

The following versions of Netscape Communicator are supported
Norton AntiVirus Corporate Edition 7.6 and Symantec AntiVirus Corporate Edition 8.0.

Cross version migration is supported for the following paths:

- Norton AntiVirus Corporate Edition 7.6 to Norton AntiVirus Corporate Edition 7.6
- Norton AntiVirus Corporate Edition 7.6 to Symantec AntiVirus Corporate Edition 8.0

- Symantec AntiVirus Corporate Edition 8.0 to Symantec AntiVirus Corporate Edition 8.0

Visio

Migrates Visio data files, persistent settings and templates.

The following file types are migrated:

Visio Data Files

.vdx, .vrd, .vsd, .vss, .vsw, .vsx

Visio Template Files

.vst, .vtx

The following versions of Visio are supported
Visio 2000, Visio 2002, Visio 2003 and Visio 2007

Cross version migration is supported for the following paths:

- Visio 2000 to Visio 2000
- Visio 2000 to Visio 2002
- Visio 2000 to Visio 2003
- Visio 2000 to Visio 2007
- Visio 2002 to Visio 2002
- Visio 2002 to Visio 2003
- Visio 2002 to Visio 2007
- Visio 2003 to Visio 2003
- Visio 2003 to Visio 2007
- Visio 2007 to Visio 2007

WinZip

Migrates WinZip data files and persistent settings



WinZip content does not migrate .cab files by design. If the migration of .cab files is desired this can be accomplished using CM Settings Migration Manager File Rules.

The following file types are migrated:

WinZip Files

.arc, .arj, .b64, .bhz, .gz, .hqx, .lzh, .mim, .tar, .taz, .tgz, .tz, .uu, .uue, .xxe, .z, .zip

The following versions of WinZip are supported:

WinZip 7.x, WinZip 8.x, WinZip 9.0

Cross version migration is supported for the following paths:

- WinZip 7.x to WinZip 7.x
- WinZip 7.x to WinZip 8.x
- WinZip 7.x to WinZip 9.0
- WinZip 8.x to WinZip 8.x
- WinZip 8.x to WinZip 9.0
- WinZip 9.0 to WinZip 9.0

WordPerfect Office 2000

Word Perfect Office 2000 will migrate data files, templates, and persistent settings for the following applications:

- Corel Utilities (Address Book & QuickFinder)
- Dragon NaturallySpeaking for WordPerfect 3.x, and 4.x
- Quattro Pro 9.0
- WordPerfect 9.0

The following versions of WordPerfect Office are supported:

- WordPerfect Office 2000

Cross version migration is supported for the following paths:

- WordPerfect Office 2000 to WordPerfect Office 2000

Dragon NaturallySpeaking For WordPerfect

Migrates Dragon NaturallySpeaking data files and persistent settings.

The following versions of Dragon NaturallySpeaking are supported:

Dragon NaturallySpeaking 3.x, Dragon NaturallySpeaking 4.x

Cross version migration is supported for the following paths:

- Dragon NaturallySpeaking 3.x to Dragon NaturallySpeaking 3.x
- Dragon NaturallySpeaking 3.x to Dragon NaturallySpeaking 4.x
- Dragon NaturallySpeaking 4.x to Dragon NaturallySpeaking 4.x

Corel Utilities

Corel Address Book

Migrates persistent settings and data files for Corel Address Books

Corel QuickFinder

Migrates settings for Corel Office 2000 Suite QuickFinder.

Corel Quattro Pro

Migrates Quattro Pro data files and persistent settings

The following file types are migrated:

Quattro Pro 9 Data Files

.qpw, .wb1, .wb2, .wb3, .wq1

Corel WordPerfect

Migrates WordPerfect data files and WordPerfect persistent settings

The following file types are migrated:

WordPerfect 9 Data Files

.frm, .lab, .usr, .wpd, .wpt

Data Transport

Migrates files and registry values as set in File Rules, File Tree, and Registry Rules.

Windows Options

Migrates persistent settings and files for: Control Panel, Desktop Shortcuts, Dial-up Networking, Folder Options, Local Printer Logging, Mapped Network Drives, Network and Shared Printer Connections, Taskbar and Quick Launch Bar, User Documents and Media Files, Windows Address Book.

Desktop Shortcuts

- Migrates shortcuts on the desktop.
- ▶ Desktop shortcuts that have broken links are not migrated by default. For example, if there is a shortcut to an installed application on the source machine's desktop but that application is not installed on the target machine, the shortcut will not be migrated because it would have become a broken link on the target machine. To migrate broken link files select Preferences from the Edit menu and check the Broken Shortcut Policy check box. The broken link files will be migrated to the source directory and placed in a folder named “Broken Shortcuts”.

Dial-Up Networking

Migrates persistent settings and files for dial-up networking.

- ▶ Persistent settings that are hardware related are not migrated by design.

Folder Options

Migrates persistent settings for folder options.

Local Printer Logging

A file named `printinfo.txt` is created during injection on the users desktop that contains Printer information for both network and local printers.

Mapped Network Drives

Migrates mapped network drives. If on the target machine a drive letter is in use that is the same as a mapped drive being migrated, the next available drive letter will be used for the migrated network drive.

- ▶ Hardware related settings and files are not migrated by design.

Network and Shared Printer Connections

Migrates networked and shared printers. Printers are migrated if they have a valid UNC path and are accessible via the network or via a share. When printers are migrated a printer icon is placed on the target system's desktop. Double clicking on this icon will install the printer.

- ▶ The CM Settings Migration Manager Operator must have full access to the printers being migrated for each user. Hardware related settings and files are not migrated by design.

Taskbar and Quick Launch Bar

Migrates Start Menu settings, Taskbar settings and Quick Launch Bar shortcuts.

User Documents and Media Files

Migrates the contents of My Documents, My Pictures, My Music, and My Videos.

My Documents

Migrates the contents of My Documents

- ▶ If the My Documents folder is renamed or the location changed, CM Settings Migration Manager will still recognize this folder as "My Documents" and the contents of the folder will migrate to the "My Documents" folder on the target system.

My Music

Migrates the contents of My Music

My Pictures

Migrates the contents of My Pictures


My Videos

Migrates the contents of My Videos

Windows Address Book

Migrates the windows address book.

Control Panel

 Hardware related settings and files are not migrated by design

Migrates Persistent settings and files for:
Accessibility Options, Display, Internet Options, Keyboard, Mouse Settings,
Power Management, Regional Settings, Sounds, and Time Zones.

Accessibility Options

Migrates keyboard, sound, display, and mouse accessibility settings

Display

Migrates appearance and themes, background, and visual effects

Internet Options

Migrates Internet properties (home page, colors, fonts, languages)

Keyboard

Migrates Keyboard Languages and Keyboard Settings. Keyboard Languages are stored in different places and named differently, depending upon the operating system installed.

On Windows 2000, the settings are stored under the following path:

Control Panel \ Keyboard \ Input Locales (tab).

The settings can also be found under the following path for Windows 2000:

Control Panel \ Regional Settings \ Input Locales.

On Windows XP Pro, the settings can be found under the following path:

Control Panel \ Regional and Language Options \ Languages (tab) \ Details [Button]

On Windows Vista, the settings can be found under the following path:

Control Panel \ Clock, Language, and Region \ Change keyboards or other input methods \ Change keyboards [Button]

Mouse Settings

Migrates Persistent settings and files for Mouse (buttons, motion, pointers, and schemes).

Power Management

Migrates Persistent settings for Power Management.

Regional Settings

Migrates Persistent Regional Settings.



If Country Codes between different Operating System Versions have changed or the Country Code is not present on the target machine the settings will not migrate.

Sounds

Migrates persistent settings and files for Windows system sounds.

Time Zones

Migrates persistent settings for Time Zones

Index

/

- /ALLUSERS command, 101
- /AUTOBACKUP command, 86, 106
- /AUTOEXTRACT command, 97
- /AUTOINJECT command, 97
- /CONFIG command, 98
- /DATASTORE command, 104
- /DOMAIN command, 103
- /EXCLUDEDISKS command, 105
- /EXCLUDEDOMAIN command, 106
- /EXCLUDELOCAL command, 102
- /EXCLUDEUSER command, 102
- /HIDESTATUS command, 107
- /HTTPDIR command, 108
- /IMPORT command, 99
- /INCLUDEUSER command, 99, 100
- /NOCANCEL command, 106
- /PASSWORD command, 97
- /SOURCE command, 99

A

- administrative rights, 56
 - migrating, 56
- application event exit codes, 111
- application settings, 16

B

- backup changes, 82
- batch file, 116
- broken link files, migrating, 56
- broken shortcuts, migrating, 56

C

- command-line switches, 96
- compression, 55
- computer personality, 16
- configuration files, 29

D

- data files and personalities, 16
- data store, 29, 31
- desktop interface, 16
- directory creation, 27
- disk imaging software, 20
- documents and personalities, 16
- drive letter recognition, 27

E

- Edit menu options, 43
- email, 16
- exit codes, 111
 - and batch files, 116
- extract personality, 32
- Extract Personality view, 45
- Extracted Content tab, 85
- Extracted Users tab, 84
- extraction template, 30, 34

F

- File menu options, 43
- File Properties dialog box, 90
- file remapping, 74
- file replacement rules, 58

- always replace, 58
- never replace, 59
- replace if newer, 59
- restore files ignores, 59

- File Rule dialog box, 69
 - Include/Exclude, 69
 - source path, 69

- file rules, 64
 - accessing, 64
 - data transport, 65
 - export, 66
 - import, 66
 - token substitution, 72

- file tree, 75

- files
 - restoring, 91
 - searching, 90

H

- Help menu options, 44
- HTTP command lines, 107
- HTTP personalities, browsing, 91

I

- inject personality, 38
- injection
 - to disks, preventing, 56
 - to network locations, allowing, 57

- Internet, 16

L

- link files, broken, 56
- log files, 31
 - customizing, 59
 - information, 60
 - sections, 61
 - configuration, 61
 - content selected, 62
 - data store, 61
 - data transport policies, 62
 - detail, 62

- file rules, 62
- file section, 62
- local fixed drive, 61
- log level, 61
- operating system, 61
- summary, 62
- time, 61
- total files, 62
- user information, 61
- viewing, 59

M

- migrating
 - administrative rights, 56
 - broken links, 56
 - broken shortctus, 56

N

- network location, injection, 57

P

- passport registration, 5
- password protection, 55
- personalities
 - application setting, 16
 - backing up, 85
 - backup changes, 82
 - data files, 16
 - description, 16
 - desktop interface, 16
 - documents, 16
 - email, 16
 - extraction, 32
 - HTTP, 91
 - Internet, 16
 - migrating automatically, 96
 - password protected, 82
 - searching for files in, 90
- policies, 53
 - extraction, 54
 - injection, 55
- Preferences menu, 53
- PST files, redirecting, 58

R

- redirecting files, 88
 - global, 88
 - individual files, 89
- redirecting PST files, 58
- registry rules, 77, 78
- remapping files, 74
- response files, 109
- restore files, 86
 - process, 87

S

- search files in a personality, 90
- select for extraction, 48
- select for extraction view, 47
- select for injection, 51, 53

- shortcuts, broken, 56
- source path control, 69
- storing files, 91
- subdirectories, 73

T

- temporary directories, 55
- token substitution, 72

U

- user destination, 52
- users to extract, 48

V

- View menu options, 44

W

- wildcards in source path, 71

