

HP Configuration Management Configuration Server

for the AIX; Enterprise Linux ES, AS; HP-UX; Solaris; SuSE Linux
Enterprise Server; and Windows® operating systems

Portal and Enterprise Manager

for Windows operating systems

Software Version: 5.10

Getting Started Guide

Manufacturing Part Number: T3424-90132

Document Release Date: October 2007

Software Release Date: October 2007



Legal Notices

Warranty

The only warranties for HP products and services are set forth in the express warranty statements accompanying such products and services. Nothing herein should be construed as constituting an additional warranty. HP shall not be liable for technical or editorial errors or omissions contained herein.

The information contained herein is subject to change without notice.

Restricted Rights Legend

Confidential computer software. Valid license from HP required for possession, use or copying. Consistent with FAR 12.211 and 12.212, Commercial Computer Software, Computer Software Documentation, and Technical Data for Commercial Items are licensed to the U.S. Government under vendor's standard commercial license.

Copyright Notices

© Copyright 2007 Hewlett-Packard Development Company, L.P.

Trademark Notices

Linux is a registered trademark of Linus Torvalds.

Microsoft®, Windows®, and Windows® XP are U.S. registered trademarks of Microsoft Corporation.

OpenLDAP is a registered trademark of the OpenLDAP Foundation.

PREBOOT EXECUTION ENVIRONMENT (PXE) SERVER
Copyright © 1996-1999 Intel Corporation.

TFTP SERVER

Copyright © 1983, 1993

The Regents of the University of California.

OpenLDAP

Copyright 1999-2001 The OpenLDAP Foundation, Redwood City, California, USA.
Portions Copyright © 1992-1996 Regents of the University of Michigan.

OpenSSL License

Copyright © 1998-2001 The OpenSSLProject.

Original SSLeay License

Copyright © 1995-1998 Eric Young (eay@cryptsoft.com)

DHTML Calendar
Copyright Mihai Bazon, 2002, 2003

Documentation Updates

The title page of this document contains the following identifying information:

- Software Version number, which indicates the software version.
 - The number before the period identifies the major release number.
 - The first number after the period identifies the minor release number.
 - The second number after the period represents the minor-minor release number.
- Document Release Date, which changes each time the document is updated.
- Software Release Date, which indicates the release date of this version of the software.

To check for recent updates or to verify that you are using the most recent edition, visit:

ovweb.external.hp.com/lpe/doc_serv/

You will also receive updated or new editions if you subscribe to the appropriate product support service. Contact your HP sales representative for details.

Table 1 indicates the changes that were made to this document since the previous edition.

Table 1 Changes in this document

Chapter	Version	Changes
All	5.10	The <i>HP Configuration Management Administrator Publisher Guide</i> and the <i>HP Configuration Management Administrator Configuration Server Database Editor Guide</i> were consolidated into a new guide, the <i>HP Configuration Management Administrator User Guide (CM Admin Guide)</i> .
All	5.10	The <i>HP Configuration Management Application Manager Installation and Configuration Guide</i> and the <i>HP Configuration Management Application Self-service Manager Installation and Configuration Guide</i> were consolidated into one guide for each platform (UNIX and Windows). The consolidated guide is the <i>HP Configuration Management Application Manager and Application Self-service Manager Installation and Configuration (CM Application Manager and Application Self-service Manager Guide)</i> .
Chapter 1	5.10	Page 18, updated Table 5, Configuration Management library: revised the titles of some guides; removed references to guides that no longer exist.

Chapter	Version	Changes
Chapter 1	5.10	Page 23, added a Note regarding administrative Configuration Management tasks being performed by either the CM Portal or the CM Enterprise Manager.
Chapter 1	5.10	Page 24, added a Note regarding administrative Configuration Management tasks being performed by either the CM Portal or the CM Enterprise Manager.
Chapter 1	5.10	Page 29, removed all references to the CM Configuration Baseline Auditor; this product has been retired.
Chapter 1	5.10	Page 32, added a new section, CM Portal and CM Enterprise Manager Tasks , which will guide a CM administrator as to which product to use (CM Portal vs. CM Enterprise Manager) to complete various CM tasks.
Chapter 2	5.10	Page 35, the title of this chapter (CM Configuration Server Installation for UNIX) was revised from <i>UNIX Installations</i> .
Chapter 3	5.10	Page 51, the CM Portal installation materials have been removed from this chapter, which is now limited to the installation of the CM Configuration Server. The installation of the CM Portal has been moved to a stand-alone chapter, CM Portal Installation for Windows .
Chapter 4	5.10	Page 67, the CM Portal installation is detailed in this chapter, CM Portal Installation for Windows .
Chapter 5	5.10	Page 79, the CM Enterprise Manager installation is detailed in this chapter, CM Enterprise Manager Installation for Windows .
All	5.00	Deleted unneeded screenshots; revised associated text.
All	5.00	Changed all directory paths. The default directory paths for CM products have been changed to: <ul style="list-style-type: none"> • Program Files\Hewlett-Packard\CM (Windows) And... <ul style="list-style-type: none"> • HP/CM (UNIX)
Chapter 1	5.00	In this release, one version of the HP Configuration Management Distributed Configuration Server (CM Distributed Configuration Server) is offered; some references to this product's media have been removed.

Chapter	Version	Changes
Chapter 1	5.00	Page 16, Table 4, updated the directory structure of the HP media.
Chapter 1	5.00	<p>Page 16, Installation Media: removed references to the following products that are not supported in this release.</p> <ul style="list-style-type: none"> • HP Configuration Management Adapter for SSL (CM Adapter for SSL) • HP Configuration Management Staging Server (CM Staging Server) • HP Configuration Management Adapter (CM Adapter) • HP Configuration Management Operations Adapter (CM Operations Adapter) <p>Also, this release does not offer support for HP Configuration Management products on Mac OS X.</p>
Chapter 1	5.00	Page 23, added information for a new CM product, CM Enterprise Manager .
Chapter 2	5.00	Removed references to, and information about installing the HP Configuration Management Portal on UNIX operating systems; this installation is not available in this release.
Chapter 2	5.00	Page 40, in the section, UNIX Pre-Installation Notes , added information regarding the UNIX <code>arp</code> utility.

Support

You can visit the HP Software support web site at:

www.hp.com/go/hpsoftwaresupport

This web site provides contact information and details about the products, services, and support that HP Software offers.

HP Software online software support provides customer self-solve capabilities. It provides a fast and efficient way to access interactive technical support tools needed to manage your business. As a valued support customer, you can benefit by using the support site to:

- Search for knowledge documents of interest
- Submit and track support cases and enhancement requests
- Download software patches
- Manage support contracts
- Look up HP support contacts
- Review information about available services
- Enter into discussions with other software customers
- Research and register for software training

Most of the support areas require that you register as an HP Passport user and sign in. Many also require an active support contract. To find more information about support access levels, go to the following URL:

http://h20230.www2.hp.com/new_access_levels.jsp

To register for an HP Passport ID, go to the following URL:

<http://h20229.www2.hp.com/passport-registration.html>

Contents

1 Introduction	13
About Configuration Management	14
Overview of this Guide	14
Document Map	14
Configuration Management Supporting Documentation	15
Installation Media	16
Configuration Management Documentation Media	18
Configuration Management Configuration Server Media	20
CM Configuration Server	20
CM Administrator	21
CM Extensions for Windows Installer	22
CM Distributed Configuration Server	23
CM Enterprise Manager Media	23
CM Enterprise Manager	23
CM Infrastructure Media	24
CM Policy Server	24
CM Batch Publisher	24
CM Portal	25
CM Multicast Server	25
CM Proxy Server	25
CM Configuration Analyzer	26
CM Knowledge Base Server	26
CM Reporting Server	26
CM Messaging Server	26
CM Agents Media	27
CM Application Manager	27
CM Application Self-service Manager	27
CM Inventory Manager	28
CM Patch Manager Media	28
CM Patch Manager	28
CM OS Manager Media	29
CM OS Manager	29
CM Server Management Media	29
CM Application Management Profiles	29

CM Windows Terminal Server	30
CM Usage Manager Media	30
CM Application Usage Manager.....	30
CM Implementation Overview	30
CM Portal and CM Enterprise Manager Tasks.....	32
Summary.....	33
2 CM Configuration Server Installation for UNIX	35
Chapter Overview.....	36
System Requirements.....	36
Platform Support.....	36
CM Configuration Server Installation	36
Installation Types	36
CM Configuration Server Directories.....	37
System Recommendations for UNIX	38
UNIX Pre-Installation Checklist.....	39
UNIX Pre-Installation Tips	39
UNIX Pre-Installation Notes.....	40
All UNIX Platforms	40
HP-UX Notes.....	40
UNIX Environment Variables	41
The Setup-Configuration File.....	42
Installing the CM Configuration Server.....	43
Silent Installation.....	43
GUI Installation	44
UNIX Post-Installation Notes	48
Starting, Stopping, Identifying, and Cleaning up the CM Configuration Server	49
3 CM Configuration Server Installation for Windows	51
System Requirements.....	52
Platform Support.....	52
CM Configuration Server Installation	52
Installation Types	52
CM Configuration Server Directories.....	53
System Recommendations for Windows	54

Windows Pre-Installation Checklist.....	54
Windows Pre-Installation Tips	55
Installing the CM Configuration Server.....	56
Silent Installation.....	57
GUI Installation	57
The CM Configuration Server as a Windows Service	63
Windows Service Options	64
Using the Windows Event Viewer with the CM Configuration Server	65
Accessing the Event Viewer	65
Filtering for CM Configuration Server Messages	65
CM Configuration Server Messages in Event Viewer	66
4 CM Portal Installation for Windows	67
System Recommendations	68
Pre-Installation Checklist	68
Pre-Installation Tips	68
Pre-Installation Notes.....	69
Server Notes.....	69
CM Agent Notes and Access Requirements.....	69
Directory Size of a Single Zone	69
CM Portal and the CM Messaging Server.....	70
Installing the CM Portal.....	70
Starting and Stopping the CM Portal.....	76
Accessing and Logging on to the CM Portal.....	76
Summary	78
5 CM Enterprise Manager Installation for Windows.....	79
System Requirements.....	80
Platform Support.....	80
Installation Tasks.....	81
A UNIX Kernel Tuning	83
Essential Kernel Variables	83

B Product Name Changes	87
Index	89

1 Introduction

At the end of this chapter, you will:

- Be familiar with the Configuration Management (CM) product suite.
- Know which CM media contains the installation files for each CM component.
- Have a high-level understanding of the function of the various CM components.

About Configuration Management

Configuration Management (CM) manages the distribution of software packages via connections to the Internet or an intranet. CM administrators publish packages of software and assign users to the packages that they need.

Overview of this Guide

The *HP Configuration Management Configuration Server, Portal, and Enterprise Manager Getting Started Guide (CM Getting Started Guide)* gives CM administrators quick access to:

- The organization of the CM installation media, and
- The logical grouping and functionality of all the CM components.

This guide also documents the installation of the principal CM infrastructure products:

- HP Configuration Management Configuration Server (CM Configuration Server),
- HP Configuration Management Portal (CM Portal) and
- HP Configuration Management Enterprise Manager (CM Enterprise Manager).

These installations enable CM administrators to quickly set up and begin using a Configuration Management environment. You can also install the CM publications library to make it available for referencing during other CM installations—in accordance with product licensing.



For more information on other components of the CM product suite, refer to the guides that are referenced later in this chapter.

Document Map

This section provides an overview of this book to help you locate specific information about the CM Configuration Server and CM Portal.

Table 2 Document Map

Chapter	Contents
Chapter 1: Introduction	The contents of this guide, including: an overview of the CM installation media; and an overview of the various CM components.
Chapter 2: CM Configuration Server Installation for UNIX	Installing the CM Configuration Server in a UNIX environment.
Chapter 3: CM Configuration Server Installation for Windows	Installing the CM Configuration Server in a Windows environment.
Chapter 4: CM Portal Installation for Windows	Installing the CM Portal in a Windows environment.
Chapter 5: CM Enterprise Manager Installation for Windows	Installing the CM Enterprise Manager in a Windows environment.
Appendix A: UNIX Kernel Tuning	UNIX Kernel resource allowances in relation to the CM Configuration Server, including: parameters on the different UNIX operating systems; and CM Configuration Server configuration based on concurrent tasks and cache management.

Configuration Management Supporting Documentation

This section presents a list of Configuration Management publications that are associated with the CM Configuration Server, CM Portal, and CM Enterprise Manager.

Table 3 CM supporting documentation

Product	Publication
CM Configuration	<i>HP Configuration Management Configuration Server User Guide</i>

Product	Publication
Server	<i>HP Configuration Management Configuration Server Messages Guide</i>
	<i>HP Configuration Management Configuration Server Database Reference Guide</i>
	<i>HP Configuration Management REXX Programming Guide</i>
CM Portal	<i>HP Configuration Management Portal Installation and Configuration Guide</i>
CM Enterprise Manager	<i>HP Configuration Management Enterprise Manager User Guide</i>

For a list of all manuals in the CM library, see [Table 5](#) on page 18.

Installation Media

The CM installation media are organized by product type and contain all of the products that are needed to set up a CM infrastructure.

The CM product installations are in the following directories of the media.

Table 4 CM media directory contents

Directory	Contents
Agents	The installation materials for the HP Configuration Management agents. See CM Agents Media , starting on page 27.
Configuration Server	The installation materials for the HP Configuration Management Configuration Server, as well some of the extended infrastructure and management infrastructure products. See Configuration Management Configuration Server Media , starting on page 20.

Directory	Contents
Documentation	<p>The HP CM library.</p> <p>See Configuration Management Documentation Media, starting on page 18.</p>
Enterprise Manager	<p>The installation materials for the HP Configuration Management Enterprise Manager.</p> <p>See CM Enterprise Manager Media, starting on page 23.</p>
Infrastructure	<p>The installation materials for the HP Configuration Management infrastructure, as well some of the extended infrastructure and management extensions products.</p> <p>See CM Infrastructure Media, starting on page 24.</p>
OS Manager	<p>The installation materials for the HP Configuration Management OS Manager.</p> <p>See CM OS Manager Media, starting on page 29.</p> <p>NOTE: The installation media for the CM OS Manager has been relocated to a stand-alone CD.</p>
Patch Manager	<p>The installation materials for the HP Configuration Management Patch Manager.</p> <p>See CM Patch Manager Media, starting on page 28.</p>
Server Mgmt	<p>The installation materials for the HP Configuration Management Server Management products.</p> <p>See CM Server Management Media, starting on page 29.</p>
Usage Manager	<p>The installation materials for the HP Configuration Management Application Usage Manager.</p> <p>See CM Usage Manager Media, starting on page 30.</p>
AUTORUN.INF	<p>The auto-run file for the CM library.</p>
CM_5.10_RN.pdf	<p>The Release Notes document for this release.</p>



Before installing the CM products, check the HP web site for updated product release information.

Also, review any `readme` files, migration guides, and release notes that are included on the media—they might contain important product information.

The installation media might contain products for which you are not licensed. Install only those products for which you purchased a license.

Configuration Management Documentation Media

The CM media's `Documentation` directory contains a list of CM documentation in *Portable Document Format* (PDF).

[Table 5](#) below offers an alphabetical list of the publications that are in the CM `Documentation` directory for this release.

Table 5 Configuration Management library

HP Configuration Management Administrator User Guide

HP Configuration Management Application Management Profiles User Guide

HP Configuration Management Application Manager and Application Self-service Manager Installation and Configuration Guide for UNIX

HP Configuration Management Application Manager and Application Self-service Manager Installation and Configuration Guide for Windows

HP Configuration Management Application Usage Manager User Guide

HP Configuration Management Batch Publisher Installation and Configuration Guide

HP Configuration Management Configuration Analyzer Installation and Configuration Guide

HP Configuration Management Configuration Server, Portal, and Enterprise Manager Getting Started Guide

HP Configuration Management Configuration Server Database Reference Guide

HP Configuration Management Configuration Server Messages Guide

HP Configuration Management Configuration Server User Guide

*HP Configuration Management Distributed Configuration Server
Installation and Configuration Guide*

HP Configuration Management Enterprise Manager User Guide

*HP Configuration Management Extensions for Windows Installer Getting
Started Guide*

*HP Configuration Management Extensions for Windows Installer User
Guide*

*HP Configuration Management OS Manager Hardware Configuration
Management Guide*

*HP Configuration Management Inventory Manager Installation and
Configuration Guide for UNIX*

*HP Configuration Management Inventory Manager Installation and
Configuration Guide for Windows*

*HP Configuration Management Knowledge Base Server Installation and
Configuration Guide*

*HP Configuration Management Management Applications Messages and
Codes Guide*

*HP Configuration Management Messaging Server Installation and
Configuration Guide*

*HP Configuration Management Multicast Server Installation and
Configuration Guide*

*HP Configuration Management OS Manager Installation and
Configuration Guide for UNIX*

*HP Configuration Management OS Manager Installation and
Configuration Guide for Windows*

*HP Configuration Management Patch Manager Installation and
Configuration Guide*

*HP Configuration Management Policy Server Installation and
Configuration Guide*

*HP Configuration Management Portal Installation and Configuration
Guide*

*HP Configuration Management Proxy Server Installation and
Configuration Guide*

HP Configuration Management Reporting Server Installation and Configuration Guide

HP Configuration Management REXX Programming Guide

HP Configuration Management Service Desk Integration Guide

HP Configuration Management Server Management Windows Terminal Server and Citrix Support Guide

HP Configuration Management SSL Implementation Guide

These publications will help a CM administrator prepare the data that are needed to manage all the computers in an enterprise.

Be sure to periodically check the HP documentation web site, **http://ovweb.external.hp.com/lpe/doc_serv/**, for new and updated publications; and for additional technical support articles, refer to the HP support web site, **www.hp.com/go/hpsupport**.

Configuration Management Configuration Server Media

This media contains the installation files for the CM components that are listed in [Table 6](#) below.

Table 6 Configuration Server media contents

Directory	CM Component
extended_infrastructure	CM Distributed Configuration Server
management_infrastructure	CM Administrator Workstation
	CM Configuration Server
	CM Extensions for Windows Installer

The sections that follow offer additional details on these components.

CM Configuration Server

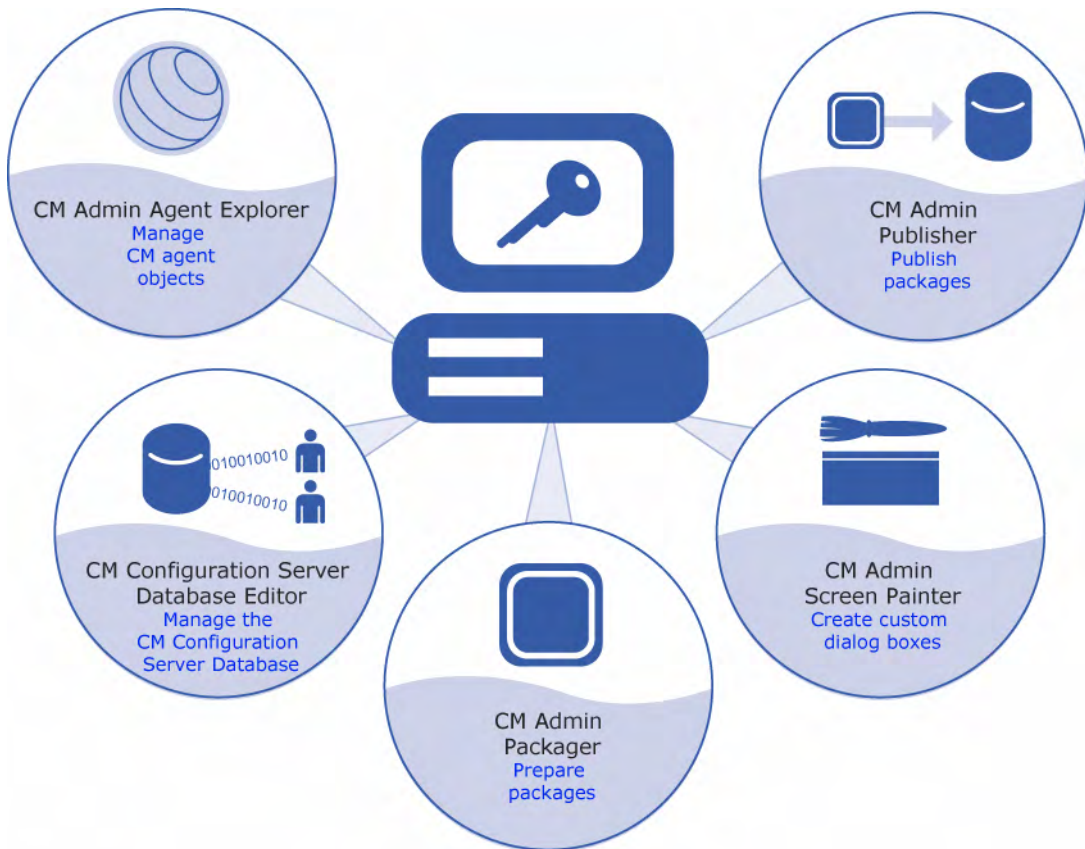
The HP Configuration Management Configuration Server (CM Configuration Server) resides on a single server, or several can be installed across a network of servers. Applications and information about the subscribers and CM agent computers are stored in the HP Configuration Management Configuration Server Database (CM Configuration Server Database) on the CM Configuration Server. The CM Configuration Server distributes


application packages based on the policies that are established by a CM administrator. For more information, refer to the *HP Configuration Management Configuration Server User Guide*.

CM Administrator

The HP Configuration Management Administrator (CM Administrator) contains a set of tools (shown in [Figure 1](#) below) for basic administrative functions. Use these tools to manage the CM Configuration Server Database, prepare applications, view CM agent objects, and customize a computing environment.

Figure 1 Tools of the HP Configuration Management Administrator



 For instructions on how to install the HP Configuration Management Administrator (CM Administrator), refer to the *CM Administrator User Guide (CM Administrator Guide)*.

The CM Administrator includes the following tools.

CM Administrator Packager (CM Admin Packager)

Use to create component groups called **packages**. Refer to the *CM Application Manager and Application Self-service Manager Guide* for more information.

CM Administrator Publisher (CM Admin Publisher)

Use to publish packages to the CM Configuration Server. For more information, refer to the *HP Configuration Management Administrator Guide*.

CM Administrator Configuration Server Database Editor (CM Admin Configuration Server Database Editor)

Use to create new users and groups of users, assign users to groups, and assign users and groups to application packages. Refer to the *HP Configuration Management Administrator Guide*.

CM Administrator Agent Explorer (CM Admin Agent Explorer)

Use to manipulate local CM objects.

CM Administrator Screen Painter (CM Admin Screen Painter)

Use to create custom dialog boxes.

CM AMP Editor

Use to create and modify Application Profiles.

CM Extensions for Windows Installer

The HP Configuration Management Extensions for Windows Installer (CM Extensions for Windows Installer) is a management system that automates and simplifies the enterprise application integration laboratory process. Use it to build, test, maintain, deploy, and troubleshoot Windows Installer applications and installation packages. For more information, refer to the *HP Configuration Management Extensions for Windows Installer User Guide* and

HP Configuration Management Extensions for Windows Installer Getting Started Guide.

CM Distributed Configuration Server

The HP Configuration Management Distributed Configuration Server (CM Distributed Configuration Server) is a database replication tool with which a CM administrator can copy the contents (all or part) of one CM Configuration Server Database to another, and perform subsequent source-to-destination synchronizations in order to replicate database changes. For more information, refer to the *HP Configuration Management Distributed Configuration Server Installation and Configuration Guide*.

CM Enterprise Manager Media

This media contains the installation files for the CM components that are listed in [Table 7](#) below.

Table 7 Enterprise Manager media contents

Category	CM Component
N/A	CM Enterprise Manager

The section that follows provides a description of this component.

CM Enterprise Manager

The HP Configuration Management Enterprise Manager (CM Enterprise Manager) is a web-based, agent-management tool that allows a CM administrator to quickly and easily manage software, patches, and inventory for devices in a Configuration Management environment. For more information, refer to the *HP Configuration Management Enterprise Manager User Guide*.

- ▶ Various administrative Configuration Management tasks can be performed by either the CM Portal or the CM Enterprise Manager.
 - See [Table 14](#), on page 32, for an overview of these tasks.
 - Refer to the *HP Configuration Management Enterprise Manager User Guide* and the *HP Configuration Management Portal Installation and Configuration Guide* for detailed information.

CM Infrastructure Media

This media contains the installation files for the CM components that are listed in [Table 8](#) below.

Table 8 Infrastructure media contents

Directory	CM Component
extended_infrastructure	CM Configuration Analyzer
	CM Knowledge Base Server
	CM Portal
	CM Messaging Server
	CM Multicast Server
	CM Proxy Server
	CM Reporting Server
management_extensions	CM Policy Server
	CM Publishing Adapter (CM Batch Publisher)
	CM Service Desk Adapter

These components are described in further detail in the sections that follow.

CM Policy Server

The HP Configuration Management Policy Server (CM Policy Server) is a plug-in to the CM Integration Server. It can be used for administrative tasks such as mapping services to users, and it can be used to leverage LDAP-based directory services, like Active Directory and SQL-based databases. Refer to the *HP Configuration Management Policy Server Installation and Configuration Guide*.

CM Batch Publisher

The HP Configuration Management Batch Publisher (CM Batch Publisher) is a command-line driven alternative to the CM Admin Publisher. It provides an automated, repeatable process, whereas the Publisher must be monitored from start to finish. Its focus is distributing updates rather than initial application packaging. The CM Batch Publisher can easily be integrated with

third-party configuration-management and packaging products. Refer to the *HP Configuration Management Batch Publisher Installation and Configuration Guide*.

CM Portal

The HP Configuration Management Portal (CM Portal) is a web-based interface that can be used to manage a Configuration Management environment. One of the more useful features is the ability to create a graphical representation of the CM infrastructure. Refer to the *HP Configuration Management Portal Installation and Configuration Guide*.

- ▶ Various administrative Configuration Management tasks can be performed by either the CM Portal or the CM Enterprise Manager.
 - See [Table 14](#), on page 32, for an overview of these tasks.
 - Refer to the *HP Configuration Management Enterprise Manager User Guide* and the *HP Configuration Management Portal Installation and Configuration Guide* for detailed information.

CM Multicast Server

The HP Configuration Management Multicast Server (CM Multicast Server) enhances and simplifies data-transmission by reducing the number of transmissions and maximizing the use of network bandwidth. Multicasting enables a CM administrator to simultaneously transmit one stream of data to multiple recipients. Refer to the *HP Configuration Management Multicast Server Installation and Configuration Guide*.

CM Proxy Server

HP Configuration Management Proxy Servers (CM Proxy Server) are beneficial when numerous CM agents are requesting the same resources from the same location. Data can be cached on a CM Proxy Server, thereby decreasing the demand on the CM Configuration Server, which in turn allows it to allocate more resources to other tasks. By placing CM Proxy Servers at strategic points in a network, the rate at which data is transferred increases. Refer to the *HP Configuration Management Proxy Server Installation and Configuration Guide*.

CM Configuration Analyzer

The HP Configuration Management Configuration Analyzer (CM Configuration Analyzer) simplifies application management. It is backed by a database, wherein imported **state files** keep a detailed history of all of the resources that are needed by an application. It performs integration- and management-analysis functions, and with it, CM administrators can profile applications, initiate application comparisons, and analyze applications. For more information, refer to the *HP Configuration Management Configuration Analyzer Installation and Configuration Guide*.

CM Knowledge Base Server

The HP Configuration Management Knowledge Base Server (CM Knowledge Base Server) is used with the CM Configuration Analyzer. It populates the Knowledge Base with data in the form of state files, which consist of data that represent the current state of an application. For more information, refer to the *HP Configuration Management Knowledge Base Manager Installation and Configuration Guide*.

CM Reporting Server

The web-based HP Configuration Management Reporting Server (CM Reporting Server) allows the querying of data in the CM Inventory Manager, CM Patch Manager, and CM Usage Manager databases, and the creation of detailed reports. It also provides a way to use Configuration Management SQL data for reporting and overall environmental assessment. For more information, refer to the *HP Configuration Management Reporting Server Installation and Configuration Guide*.

CM Messaging Server

The HP Configuration Management Messaging Server (CM Messaging Server) is a generic messaging service that can be used with several of the CM infrastructure components. It continually monitors a pre-defined data queue, and dynamically routes data objects to external destinations. On a CM Configuration Server, the CM Messaging Server operates with the executable, QMSG, to transfer reporting data from CM agents to the appropriate external CM Integration Server, where it can then be mapped to the appropriate reporting database. For more information, refer to the *HP Configuration Management Messaging Server Installation and Configuration Guide*.

CM Agents Media

This media contains the installation files for the CM components that are listed in [Table 9](#) below.

- ▶ The Management Applications products that are listed in [Table 9](#)—and detailed in this section—comprise the CM agents.

Table 9 Applications media contents

Category	CM Component
Management Applications	CM Application Manager Agent
	CM Application Self-service Manager Agent
	CM Inventory Manager Agent
	CM Patch Manager Agent
	CM OS Manager Agent
	CM Server Management Agent

The sections that follow provide descriptions of these components.

CM Application Manager

The HP Configuration Management Application Manager agent (CM Application Manager) allows a CM administrator to control the distribution and maintenance of mandatory applications throughout the enterprise. Refer to the *HP Configuration Management Application Manager and Application Self-service Manager Installation and Configuration Guide*.

CM Application Self-service Manager

The HP Configuration Management Application Self-service Manager Agent (CM Application Self-service Manager) allows end users to control the installation, removal, and updating of the optional applications that are available to them in a service list. Refer to the *HP Configuration Management Application Manager and Application Self-service Manager Installation and Configuration Guide*.

- The CM Application Manager and CM Application Self-service Manager can be co-resident on a machine. In this situation, the CM administrator still determines:
- Whether an application is mandatory or optional, and
 - By whom the installation will be controlled.

CM Inventory Manager

The HP Configuration Management Inventory Manager Agent (CM Inventory Manager) allows an administrator to collect hardware information and send it to the CM Inventory Manager database for inventory reporting. Refer to the *HP Configuration Management Inventory Manager Installation and Configuration Guide*.

CM Patch Manager Media

This media contains the installation files for the CM components that are listed in [Table 10](#) below.

Table 10 Patch Manager media contents

Category	CM Component
Extended Infrastructure	CM Patch Manager (Server component)

CM Patch Manager

HP Configuration Management Patch Manager (CM Patch Manager) automates the patch-management process (including patch acquisition, deployment, and maintenance) in order to identify and manage software security vulnerabilities, and ensure the proper configuration of managed devices. With it, an administrator can configure acquisition preferences in order to collect security patches from a vendor's web-based security-patch repository, as well as perform impact analysis and pilot testing in order to identify affected applications and devices. For more information, refer to the *HP Configuration Management Patch Manager Installation and Configuration Guide*.

CM OS Manager Media

This media contains the installation files for the CM components that are listed in [Table 11](#) below.

Table 11 OS Manager media contents

Category	CM Component
Extended Infrastructure	CM OS Manager (CM OS Manager Server component)

CM OS Manager

The HP Configuration Management OS Manager (CM OS Manager) is comprised of agent and server components, which allow an administrator to provision operating systems on agent devices. The CM OS Manager can deploy operating systems based on policy assignments; and prompt the user to choose an operating system based on a set of criteria. For more information, refer to the *HP Configuration Management Operating System Manager Installation and Configuration Guide*.

CM Server Management Media

This media contains the installation files for the CM components that are listed in [Table 12](#) below.

Table 12 Server Management media contents

Category	CM Component
Server Management	CM Application Management Profiles
	CM Windows Terminal Server

CM Application Management Profiles

The HP Configuration Management Application Management Profiles (CM Application Management Profiles) is a set of tools that is built on top of the CM Application Manager in order to enable the deployment and management of complex software products. It provides a set of tools with which a CM administrator can analyze configuration control data for targeted products, deploy and configure software to targeted devices, and report on the success

of the deployment. Refer to the *HP Configuration Management Application Management Profiles User Guide*.

CM Windows Terminal Server

HP Configuration Management Windows Terminal Server and Citrix Support (CM Windows Terminal Server) works with Windows Terminal Services, a thin-client server that is available on some Windows operating systems, and which moves the processing of applications off a user's desktop onto a centralized server. For more information, refer to the *HP Configuration Management Solutions for Servers Windows Terminal Server and Citrix Support Guide*.

CM Usage Manager Media

This media contains the installation files for the CM components that are listed in [Table 13](#) below.

Table 13 Application Usage Manager media contents

Category	CM Component
Extended Infrastructure	CM Usage Manager

CM Application Usage Manager

The HP Configuration Management Application Usage Manager (CM Application Usage Manager) can assess patterns of application usage in an environment. This ability allows an administrator to ensure adherence to license agreements, re-provision licenses if needed, and monitor user productivity. Additionally, it can be used to enforce corporate standards by identifying non-standard software, and to view the actual use of application resources. Refer to the *HP Configuration Management Application Usage Manager Installation and Configuration Guide*.

CM Implementation Overview

This guide describes the installations of the:

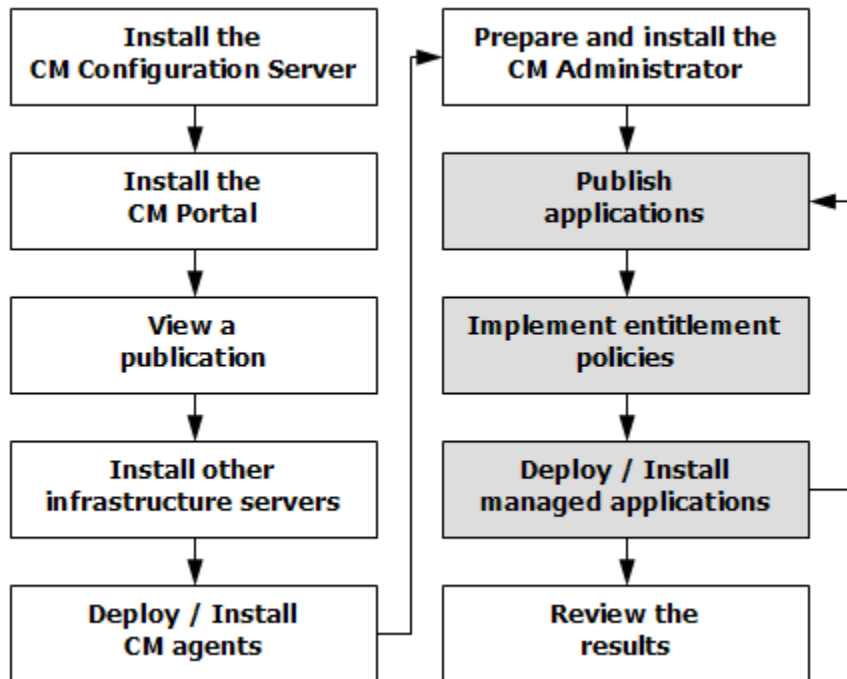
- HP Configuration Management Configuration Server (CM Configuration Server)
- HP Configuration Management Portal (CM Portal), and
- HP Configuration Management Enterprise Manager (CM Enterprise Manager).

For a functional CM infrastructure, the CM Configuration Server, CM Portal and CM Enterprise Manager *must* be installed.

After these products are installed, additional CM products can be installed—in accordance with license agreements. With the CM infrastructure in place, all of the digital assets in the enterprise can be managed by CM.

Figure 2 provides an overview of a functional CM implementation.

Figure 2 CM environment



CM Portal and CM Enterprise Manager Tasks

Table 14 below lists the Configuration Management tasks that are handled by CM Portal and CM Enterprise Manager.


 Use Table 14 to determine which product to use to complete each of the tasks that are listed.

Table 14 CM Portal and CM Enterprise Manager Tasks

CM Portal	CM Enterprise Manager
<ul style="list-style-type: none">• Deploy CM Agents and CM Proxy Servers	<ul style="list-style-type: none">• Manage policy
<ul style="list-style-type: none">• Synchronize CM Proxy Servers	<ul style="list-style-type: none">• Notify CM agents
<ul style="list-style-type: none">• OS management operations	<ul style="list-style-type: none">• Configure Directory Services
<ul style="list-style-type: none">• Manage directories	<ul style="list-style-type: none">• Configure users
<ul style="list-style-type: none">• Device power management	<ul style="list-style-type: none">• Import devices
<ul style="list-style-type: none">• Advanced policy operations	<ul style="list-style-type: none">• Manage virtual machines
	<ul style="list-style-type: none">• View reports (using the integrated CM Reporting Server)

For more detailed information about these tasks, refer to the CM Portal and CM Enterprise Manager documentation.

Summary

- To install the CM components, the proper license file is required.
- All CM implementations must include the CM Configuration Server.
- The CM agents are CM Application Manager Agent, CM Application Self-service Manager Agent, and CM Inventory Manager Agent.
- The HP documentation web site, **http://ovweb.external.hp.com/lpe/doc_serv/**, should be periodically checked for the latest versions of manuals, Release Notes, and Migration Guides.

2 CM Configuration Server Installation for UNIX

At the end of this chapter, you will have:

- An understanding of the CM Configuration Server system requirements for a UNIX environment.
- Installed the CM Configuration Server (either *silently* or via a *graphical user-interface* [GUI]) in a UNIX environment.

Chapter Overview

This chapter details the installation of the latest version of the HP Configuration Management Configuration Server (CM Configuration Server), starting below.

System Requirements

Platform Support

For information about the platforms that are supported in this release, refer to the accompanying release notes.

CM Configuration Server Installation

This section provides instructions for installing the CM Configuration Server, as well as reviewing the system requirements for the various UNIX platforms.

Installation Types

There are two installation types, *Silent* and *User Interface*.

- **Silent**
A hands-off, command-line invoked installation that has pre-determined database-configuration parameters. It will install the CM Configuration Server Database and
 - The TCP/IP communications protocol, configured on port 3464
 - Three TCP/IP Notify Managers
 - Default caching and SNMP configurations
 - Default Internet settings for the CM Configuration Server
- **User Interface (GUI)**
A graphical installation that requires an administrator of CM to specify a

variety of parameters in order to customize the CM environment. It has some pre-determined database configuration parameters, and will install the CM Configuration Server Database and the following configurable parameters:

- The TCP/IP communications protocol and port
- TCP/IP Notify Managers
- Caching and SNMP configurations
- Internet settings for the CM Configuration Server

CM Configuration Server Directories

Table 15 lists the directories that are automatically created during the CM Configuration Server installation.

Table 15 CM Configuration Server Directories

Directory	Contents
bin	The shell scripts that enable you to start, stop, clean up, and query the CM Configuration Server.
DB	The CM Configuration Server Database files.
exe	The CM Configuration Server methods and executable files.
internet	The Internet HTML and graphics files.
lib	The files for proper CM Configuration Server operation. Note: Do not modify or delete these files.
log	The CM Configuration Server log.
rexx	This directory is for storing customized REXX methods. Note: Its sub-folder, <code>NOVADIGM</code> , contains the default CM Configuration Server REXX methods. See the caution that follows.

- ▶ Altering the CM Configuration Server methods that are in the `ConfigurationServer\rexx\NOVADIGM` directory could adversely effect CM processing.

Therefore, it is recommended that a method be copied up one level, to the `ConfigurationServer\rexx` directory, before being modified.

System Recommendations for UNIX

Table 16 below lists the amount of space that is required on the UNIX platforms for the installation and operation of the CM Configuration Server and its associated elements. It is recommended that these limits be allocated on the system on which the CM Configuration Server is being installed.

- ▶ These recommendations represent typical, minimum operating system estimates. Adjust them based on the environment in which the CM Configuration Server Database is being installed.

Table 16 Space Requirements for the CM Configuration Server

Component	All Platforms
Memory	512 MB
Swap	2 GB
CM Configuration Server Directory Important Note: This space recommendation does not include estimates for additional applications that will be managed by the CM Configuration Server.	75 MB
CM Configuration Server Database *	see note *
CM Configuration Server Logs	50 MB

- ▶ * The size of the CM Configuration Server Database depends on the size and number of applications that the CM Configuration Server is going to manage. HP recommends this be estimated as roughly 50 percent of the size of the applications to be managed.

Adjust these recommendations based on the environment in which the CM Configuration Server Database is being installed.

UNIX Pre-Installation Checklist

Prior to beginning the installation, make sure that:

- The user that is performing the installation has:
 - Adequate rights on the UNIX workstation to create and update the target installation directory.
 - A home directory on the UNIX workstation, and is not logged in as `root`.
- This installation program is run from within UNIX.
- If the SNMP process is running, stop it.
- Prior to starting the CM Configuration Server installation:
 - Close all other applications, including anti-virus programs.
 - Stop all other tasks and operations that are executing.

UNIX Pre-Installation Tips

- Have the license file easily accessible for the installation.
- Click **Cancel** in any window to exit the installation. If **Cancel** is clicked accidentally, a confirmatory prompt enables the return to the installation program.
- Click **Back** at any time to return to previous windows. All the information entered thus far will remain unchanged.
- Most windows have associated error messages. If specifications are invalid, an error message will appear. Click **OK** and enter the correct information.
- This installation program displays default values when applicable. It is recommended that all defaults be accepted; however, they can be overridden by specifying the parameters for your environment.

UNIX Pre-Installation Notes

All UNIX Platforms

arp Utility

The UNIX user who is installing the CM Configuration Server (CM-CS) should have access to the UNIX utility, `arp`, which is usually located in `/usr/sbin`.

To prevent the CM Configuration Server installation from failing, the UNIX user who is installing the CM Configuration Server must have either:

- `/usr/sbin` in his default PATH variable, or
- A UNIX administrator copy/move the `arp` utility to a path that is available to the UNIX user who is installing the CM-CS.

Directory Permissions

The user that is installing the CM Configuration Server must have:

- A `/tmp` directory under the `root`, and
- Write permissions for the directory.

HP-UX Notes

Sub-directories

There are two `hprisc` sub-directories in the `/configuration_server` directory of the CM Configuration Server media; be sure to navigate to the correct sub-directory.

- For PA-RISC 2.0 chipsets, the installation media is in `/hprisc2`.
- For PA-RISC 1.1 chipsets, the installation media is in `/hprisc1`.

Mounting the DVD

The CM media must be mounted using `pfs_mount` on HP-UX platforms because the DVD is created using the Rock Ridge format. The HP-UX standard mount procedure is incompatible with the Rock Ridge file system type, so HP has made available the *Portable File System* (PFS) package that allows their workstations to recognize this format. Specific instructions are:

- Insert the DVD and mount it by typing `/usr/sbin/pfs_mount -v -x unix /dvd/mnt`.
- To un-mount, type `/usr/sbin/pfs_umount /mnt`.

When installing the CM Configuration Server on HP-UX platforms, the DVD drive must be mounted to display lowercase filenames, as in `mount -o cdcase /dev/<dvd_device> /cdrom`.

If the DVD drive is not mounted with the `cdcase` parameter, file names on the DVD will be displayed in uppercase and the installation will fail.



For more information, consult your local UNIX systems administrator and UNIX *man* pages.

After installing the CM Configuration Server, be sure to periodically check the HP product support web site for service packs, updates, and fixes associated with this version.

UNIX Environment Variables

The `LIBRARY_PATH` environment variable must include the current working directory, represented by the period (`.`) in the following example, followed by the path to the operating system's shared library files.

```
LD_LIBRARY_PATH=/lib:./usr/lib
```

Also, ensure that the `PATH` environment variable includes the absolute path to the directory that contains the operating system's Bourne shell executable (the executable, `sh`, is located in `/usr/bin` on most UNIX systems), as well as the current working directory, represented by the period (`.`) in the example that follows.

```
PATH=/bin:/usr/bin/./usr/bin/X11
```

HP recommends that these environment variables be added to the log-on scripts of the UNIX user ID who installs, and will maintain, the CM Configuration Server.

Table 17 presents examples of these environment variables being specified for the four platforms on which the CM Configuration Server can be installed.



In Table 17, the *current working directory* is represented by `$XXXXXX` and `$YYYYY`. Be sure to specify your current working directory, rather than these sample fillers.

Table 17 Environment Variables

Platform	Example
AIX	LIBPATH = /lib:\$XXXXX:\$YYYYY:\$LIBPATH
	PATH = /bin:/usr/bin:\$XXXXX:\$YYYYY:\$PATH
HP-UX	SHLIB_PATH = /lib:\$XXXXX:\$YYYYY:\$SHLIB_PATH
	PATH = /bin:/usr/bin:\$XXXXX:\$YYYYY:\$PATH
Linux	LD_LIBRARY_PATH = /lib:\$XXXXX:\$YYYYY:\$LD_LIBRARY_PATH
	PATH = /bin:/usr/bin:\$XXXXX:\$YYYYY:\$PATH
Solaris	LD_LIBRARY_PATH = /lib:\$XXXXX:\$YYYYY:\$LD_LIBRARY_PATH
	PATH = /bin:/usr/bin:\$XXXXX:\$YYYYY:\$PATH



The CM Configuration Server should always be started with the `startmgr` script because it dynamically adds the real path of the CM Configuration Server binaries to the user-path environment variable.

The Setup-Configuration File

The default parameters for the CM Configuration Server installation are contained in the `setup.cfg` file. HP recommends viewing this file prior to beginning the silent installation.

The following example code is an excerpt from the CM Configuration Server `setup.cfg` file.

```
# $Revision: 1.3 $
#
source comprcsf.tcl
SelectComprcs patchmanager 1
SelectComprcs usagemanager 0
SelectComprcs osmanager 0
SelectComprcs mgr 1

#####
Variable HP_product_name "HP OVCM Configuration Server"
Variable PACKAGE "CM-CS"
```

```

Variable   PKGNAME "HP OVCM Configuration Server"

Windows {
Variable   INSTDIR "$::env(PROGRAMFILES)\\Hewlett-
Packard\\CM\\ConfigurationServer"
Variable   DESTDB "$::env(PROGRAMFILES)\\Hewlett-
Packard\\CM\\ConfigurationServer\\DB"
Variable   LICENSEFILE "C:\\license.nvd"
}

UNIX {
Variable   INSTDIR "/opt/HP/CM/ConfigurationServer"
Variable   DESTDB "/opt/HP/CM/ConfigurationServer/DB"
Variable   LICENSEFILE "~/license.nvd"
}

Variable   MGRPORT "3464"
Variable   LICEMAIL ""
Variable   MGRID "001"
Variable   MGRNAME "CMCS"
Variable   PORTALUID "romadmin"
Variable   PORTALPASS "secret"

Variable   global_GUID 000
Variable   enable_debug 0

Variable   uninstalldata_numlines 0
Variable   WinShortcuts 1
Variable   DOBACKUP 1
Variable   startrcs 1

```

Installing the CM Configuration Server

This section contains instructions for installing the CM Configuration Server. Before starting this installation, be sure to review the sections [UNIX Pre-Installation Checklist](#) and [UNIX Pre-Installation Tips](#) on the preceding pages.

Silent Installation



By default, this silent installation will back-up an existing CM Configuration Server Database.

To turn off this feature, open the `setup.cfg` file and change the value of `DOBACKUP` to `0`.

To run the CM Configuration Server Silent installation

- 1 Open a UNIX shell window at the console, or through an X-Windows emulator, logged on as the UNIX user ID who will be running the installation program.
- 2 Insert the HP CM Configuration Server media into the optical drive.
- 3 Change the current directory to the directory on the media that contains the platform-specific installation program. For example, if installing the CM Configuration Server on a Solaris machine, navigate to: `cd /cdrom/cdrom0/Configuration Server/management_infrastructure/configuration_server/solaris.`

If installing the CM Configuration Server on an HP-UX platform, navigate to `cd /mnt/cdrom0/Configuration Server/management_infrastructure/configuration_server/hprisc2.`

- 4 Type `./setup -mode silent` and press **Enter**.

The CM Configuration Server will be automatically installed to the locations, and with the pre-defined parameters, that are contained in the `setup.cfg` file.

GUI Installation

To run the CM Configuration Server GUI installation

- 1 Open a UNIX shell window at the console, or through an X-Windows emulator, logged on as the UNIX user ID who will be running the installation program.
- 2 Insert the HP CM Configuration Server media into the optical drive.
- 3 Change the current directory to the directory on the media in which the installation program is located. For example, if installing the CM Configuration Server on a Solaris machine, navigate to `cd /cdrom/cdrom0/Configuration Server/management_infrastructure/configuration_server/solaris.`

- 4 Type `./setup` and press **Enter**.

The GUI installation begins with the HP OpenView CM Configuration Server Installation Welcome window.

- 5 Click **Next**.

(At any time during the installation, click **Cancel** to exit the installation.)

The HP OpenView CM Configuration Server Installation End User Licensing Agreement window opens.

6 Click **Accept**.

- ▶ If **Accept** is not selected, the CM Configuration Server installation program will terminate.

The HP OpenView CM Configuration Server Installation Directory Specifications window opens.

7 Accept the default *root* installation directory that is displayed, or click **Browse** to navigate to a different repository for the CM Configuration Server's *executable*, *log*, *Internet*, and *REXX* files.

Accept the default *database* installation directory that is displayed, or click **Browse** to navigate to a different repository for the CM Configuration Server Database files.

- ▶ If previous versions of the CM Configuration Server and CM Configuration Server Database are in the default directories, a HP OpenView CM Configuration Server Installation Directory Update message will appear.

Click **OK** to continue with the update, or click **Cancel** to specify a different location.

8 Click **Next**.

The HP OpenView CM Configuration Server Installation Backup Directory window opens.

In this window:

- Accept the default (**Yes**) to have the installation program create a backup of the existing files, or
(This directory's name is determined by the default UNIX Shell command returning the date and time values of the machine's default time zone.)
- Select **No**, which will result in the existing files being deleted.

9 Click **Next**.

The HP OpenView CM Configuration Server Installation Select Components to Install window opens.

In this window:

- The CM Configuration Server option is selected and disabled—it will be installed.

- Select **CM Patch Manager**, **CM Usage Manager**, and/or **CM OS Manager** to automatically include those product installations.



It is important to understand that if these additional products are selected, they do NOT get installed. The CM Configuration Server installation will install ONLY the database decks that are needed to support these products; *the products will still have to be installed via their own installation programs.*

Additionally, if **CM Patch Manager**, **CM Usage Manager**, and/or **CM OS Manager** are selected, the CM Configuration Server installation will not be affected, nor will there be additional dialog boxes.

10 Click **Next**.

The HP OpenView CM Configuration Server Installation Post-Installation Start window opens.

In this window:

- Accept the default (**Yes**) to have the CM Configuration Server automatically start when the installation completes, or
- Select **No** to avoid having the CM Configuration Server automatically start at the completion of the installation.



See [Starting, Stopping, Identifying, and Cleaning up the CM Configuration Server](#) on page 49.

11 Click **Next**.

The HP OpenView CM Configuration Server Installation Location of License File window opens.

In this window:

- If the location that is displayed in the Input location of license file window reflects the location of the license file, click **Next**. Otherwise,
- Specify the correct location, or click **Browse** to navigate to the license file.

12 Click **Next**.

The HP OpenView CM Configuration Server Installation E-mail Address window opens.

This window offers the option of specifying an e-mail address to which license-expiration notifications will be sent.

13 Click **Next**.

The HP OpenView CM Configuration Server Installation CM Configuration Server ID window opens.

In this window:

- Specify a three-character ID for the CM Configuration Server.

Valid values are within the hexadecimal (0-9 and A-F) range of 001 to EFF. (This ID is used as a prefix in the CM Configuration Server's log file.)

This field is required.

14 Click Next.

The HP OpenView CM Configuration Server Installation CM Configuration Server Name window opens.

In this window:

- Specify a name (maximum of 32 characters) for the CM Configuration Server.

This field is required.

15 Click Next.

The HP OpenView CM Configuration Server Installation TCP/IP Port window opens.

This window displays the communications port that the CM Configuration Server will use.

- Accept the default port (3464) that is specified in this window. (*Recommended*)
- Or specify a different port for CM Configuration Server communications.

16 Click Next.

The HP OpenView CM Configuration Server Installation Zone Name for the Management Portal window opens.

In this window, adhere to the following guidelines to specify a Zone Name that is associated with an instance of the CM Portal.

- Specify a maximum of 64 characters.
- Use only letters (a-z and A-Z), numerals (0-9), and the space character.
- Do not use special characters, such as an underscores, commas, and periods.



For information on CM Portal Zone Names, refer to the *CM Portal Guide*.

17 Click **Next**.

The HP OpenView CM Configuration Server Installation CM Portal Credentials window opens.

- In this window, specify valid user ID and password credentials for the CM Portal.

18 Click **Next**.

The HP OpenView CM Configuration Server Installation Summary of Installation Input window opens. It presents all the information that was specified during the CM Configuration Server installation. This is the final opportunity to review and modify the specified settings.

- If you discover any errors, or wish to modify any of the entries, click **Back** until you reach the appropriate windows, and make the necessary changes.

The information that was entered in the other windows will not be affected. After making the changes, click **Next** repeatedly, until you arrive back at the Summary of Input window.

19 Click **Install**.

The HP OpenView CM Configuration Server Installation Progress window opens.

When the installation is complete, the HP OpenView CM Configuration Server Installation Finish window opens.

20 Click **Finish**.

The CM Configuration Server for UNIX has been successfully installed.

UNIX Post-Installation Notes

See Appendix A, [UNIX Kernel Tuning](#), for important information about tuning kernel parameters in order to accommodate the CM Configuration Server's use of memory, communications, and *inter-process communications* (IPC).

Starting, Stopping, Identifying, and Cleaning up the CM Configuration Server

Throughout the next four sets of instructions, the CM Configuration Server is referred to as “Manager.” In order to execute these four tasks, a CM administrator must be logged on to the system as the UNIX user ID that installed the CM Configuration Server.

To start the CM Configuration Server

- 1 Change to the CM Configuration Server `bin` directory by typing `cd /opt/HP/CM/ConfigurationServer/bin` and pressing **Enter**.
- 2 Type `./startmgr` and press **Enter**.

The CM Configuration Server will start, and a series of start-up messages will display.

▶ An optional, numerical parameter can be added to the `./startmgr` command.

This parameter specifies (in seconds) the length of time to wait before verifying that the CM Configuration Server has started. The default for this is 100 (seconds).

This parameter is useful when caching much of the database, if the processor is slow, or if there are many system tasks running. In the example below, 40 seconds would elapse before any verification is made.

```
./startmgr 40
```

▶ If the CM Configuration Server is running and a ‘start’ is attempted, the following message will display:

```
Manager already started with USER-ID=[user id] and  
PID=[HP OVCM Configuration process id]
```

To stop the CM Configuration Server

- 1 To change to the CM Configuration Server `bin` directory, type `cd /opt/HP/CM/ConfigurationServer/bin` and press **Enter**.
- 2 Type `./killmgr` and press **Enter**.

The following shutdown message is displayed:

Killing Manager with USER-ID=[user id] in 30 seconds. Please wait.



Running `./killmgr` explicitly calls the script `./clean_ipc`. Neither of these scripts should be run as **root** because all IPC resources used by **root** would be removed.

If the CM Configuration Server is not running, the following message will display:

```
Manager is not running with USERID=[user id]...do nothing
```

To identify the CM Configuration Server



The CM Configuration Server must be running.

- 1 To change to the CM Configuration Server **bin** directory, type `cd /opt/HP/CM/ConfigurationServer/bin` and press **Enter**.
- 2 Type `./whatmgr` and press **Enter**.



The user ID and the respective TCP/IP port number, database path, log paths, and method path are displayed for currently active CM Configuration Servers running on this system. No response is returned if there are no active CM Configuration Servers.

To clean up the CM Configuration Server

- 1 To change to the CM Configuration Server **bin** directory, type `cd /ConfigurationServer/bin` and press **Enter**.
- 2 Stop the CM Configuration Server.
- 3 Type `./clean_ipc` and press **Enter**.

Issuing this command will remove messages, shared memory, and semaphores from the last session of the CM Configuration Server.



HP strongly advises *against* running:

`./clean_ipc`

- when the CM Configuration Server is running.
- when logged on as **root**.

3 CM Configuration Server Installation for Windows

At the end of this chapter, you will have:

- An understanding of the CM Configuration Server system requirements for a Windows environment.
- Installed the CM Configuration Server (either *silently* or via a *graphical user-interface* [GUI]) in a Windows environment.

System Requirements

Platform Support

For information about the platforms that are supported in this release, see the accompanying release notes.

CM Configuration Server Installation

This section provides instructions for installing the CM Configuration Server, as well as reviewing the system requirements for the various Windows platforms.

Installation Types

There are two installation types, Silent and User Interface.

- **Silent**
A hands-off, command-line invoked installation that has pre-determined database-configuration parameters. It will install the CM Configuration Server Database and
 - The TCP/IP communications protocol, configured on port **3464**
 - Three TCP/IP Notify Managers
 - Default caching and SNMP configurations
 - Default Internet settings for the CM Configuration Server
- **User Interface (GUI)**
A graphical installation that requires an administrator of Configuration Management to specify a variety of parameters in order to customize the Configuration Management environment. It has some pre-determined database configuration parameters, and will install the CM Configuration Server Database and the following configurable parameters:
 - The TCP/IP communications protocol and port
 - TCP/IP Notify Managers
 - Caching and SNMP configurations

CM Configuration Server Directories

Table 18 below presents a list of the directories that will be automatically created during the CM Configuration Server installation.

Table 18 CM Configuration Server Directories

Directory	Contents
bin	The CM Configuration Server binary and executable files; the database-utility executable, <code>raddbutil.exe</code> ; two directories for SSL “certificates”; the <code>edmprof</code> file.
DB	The CM Configuration Server Database files.
internet	The <code>ARGS.XML</code> file.
lib	The CM infrastructure and CM Patch Manager Server <code>.tcl</code> scripts. Note: Do not modify or delete these files.
log	The CM Configuration Server log.
modules	The <code>.tkd</code> files for CM OS Manager.
rexx	This directory is for storing customized REXX methods. Note: Its sub-folder, <code>NOVADIGM</code> , contains the default CM Configuration Server REXX methods. See the Caution that follows.
shell	The batch and application files, such as the un-install and query scripts, and the files that coincide with the CM Configuration Server options that are available from the Start menu.



Altering the CM Configuration Server methods that are in the `ConfigurationServer\rexx\NOVADIGM` directory could adversely effect Configuration Management processing.

Therefore, it is recommended that a method be copied up one level, to the `ConfigurationServer\rexx` directory, before being modified.

System Recommendations for Windows

Table 19 below lists the disk-space requirements for installing and operating the CM Configuration Server in a Windows environment.

- ▶ These recommendations represent typical, minimum, operating system estimates. Adjust these recommendations based on the environment in which the CM Configuration Server Database is being installed.

Table 19 Space Requirements for the CM Configuration Server

Component	All Platforms
Memory	512 MB
Virtual Memory	2 GB
CM Configuration Server Directory Important Note: This space recommendation does not include estimates for additional applications that will be managed by the CM Configuration Server.	75 MB
CM Configuration Server Database *	see note *
CM Configuration Server Logs	50 MB

- ▶ * The size of the CM Configuration Server Database depends on the size and number of applications that the CM Configuration Server is going to manage. HP recommends this be estimated as roughly 50 percent of the size of the applications to be managed.
Adjust these recommendations based on the environment in which the CM Configuration Server Database is being installed.

Windows Pre-Installation Checklist

Prior to beginning the installation, make sure that:

- The user that is performing the installation is included in the Administrator group. If not, the CM Configuration Server will not be installed properly.

- If a previous version of the CM Configuration Server is running, shut it down.
- If the SNMP process is running, stop it.
 - ▶ If the Startup Type for SNMP is AUTOMATIC, change it to MANUAL and reboot the machine before proceeding.
- Prior to starting the CM Configuration Server installation:
 - Close all other applications, including anti-virus programs.
 - Stop all other tasks and operations that are executing.
 - ▶ The installation media might contain products for which licenses have not been granted.
 - Install only those products for which you purchased a license.

Windows Pre-Installation Tips

- Have the license file easily accessible for the installation.
- Click **Cancel** in any window to exit the installation. If **Cancel** is clicked accidentally, a confirmatory prompt enables the return to the installation program.
- Click **Back** at any time to return to previous windows. All the information entered thus far will remain unchanged.
- Most windows have associated error messages. If specifications are invalid, an error message will appear. Click **OK** and enter the correct information.
- This installation program displays default values when applicable. It is recommended that all defaults be accepted; however, they can be overridden by specifying the parameters for your environment.

The Setup-Configuration File

The default parameters for the CM Configuration Server installation are contained in the `setup.cfg` file. HP recommends viewing this file prior to beginning the Silent installation.

The following example code is an excerpt from the CM Configuration Server `setup.cfg` file.

```
# $Revision: 1.3 $
#
source comprcsf.tcl
```

```

SelectComprcs patchmanager 1
SelectComprcs usagemanager 0
SelectComprcs osmanager      0
SelectComprcs mgr            1

#####
Variable  HP_product_name "HP OVCM Configuration Server"
Variable  PACKAGE "CM-CS"
Variable  PKGNAME "HP OVCM Configuration Server"

Windows {
Variable  INSTDIR "$::env(PROGRAMFILES)\\Hewlett-
Packard\\CM\\ConfigurationServer"
Variable  DESTDB "$::env(PROGRAMFILES)\\Hewlett-
Packard\\CM\\ConfigurationServer\\DB"
Variable  LICENSEFILE "C:\\license.nvd"
}

# UNIX {
#Variable INSTDIR "/opt/HP/CM/ConfigurationServer"
#Variable DESTDB  "/opt/HP/CM/ConfigurationServer/DB"
#Variable LICENSEFILE "~/license.nvd"
}

Variable MGRPORT "3464"
Variable LICEMAIL ""
Variable MGRID "001"
Variable MGRNAME "CMCS"
Variable PORTALUID "romadmin"
Variable PORTALPASS "secret"

Variable global_GUID 000
Variable enable_debug 0

Variable uninstalldata_numlines 0
Variable WinShortcuts 1
Variable DOBACKUP 1
Variable startcrs 1

```

Installing the CM Configuration Server

This section contains instructions for installing the CM Configuration Server. Before starting this installation, be sure to review the sections [Windows Pre-Installation Checklist](#) and [Windows Pre-Installation Tips](#) on the preceding pages.

Silent Installation

- ▶ By default, this Silent installation will back up an existing CM Configuration Server Database.

In order to turn off this feature, open the `setup.cfg` file (see previous section) and change `DOBACKUP` to `0`.

The following steps detail the Silent installation of the CM Configuration Server.

To run the CM Configuration Server's Silent installation

- 1 Insert the HP Configuration Management installation media into the optical drive.
- 2 Navigate to the directory that contains the CM Configuration Server installation program for the Windows platforms.

```
SystemDrive:\Configuration Server\management_
infrastructure\configuration_server\win32
```

- 3 Type **setup.exe -mode silent** and press **Enter**.

The CM Configuration Server will be automatically installed to the locations—and with the pre-defined parameters—that are contained in the `setup.cfg` file.

GUI Installation

The following steps detail the GUI installation of the CM Configuration Server.

To run the CM Configuration Server GUI installation

- 1 Insert the HP Configuration Management installation media into the optical drive.
- 2 Navigate to the directory that contains the CM Configuration Server installation program for the Windows platforms.

```
System Drive:\Configuration Server\management_
infrastructure\configuration_server\win32
```

- 3 Double-click `setup.exe`.

The GUI installation begins with the HP OpenView CM Configuration Server Installation Welcome window.

4 Click **Next**.

(At any time during the installation, click **Cancel** to exit the installation.)

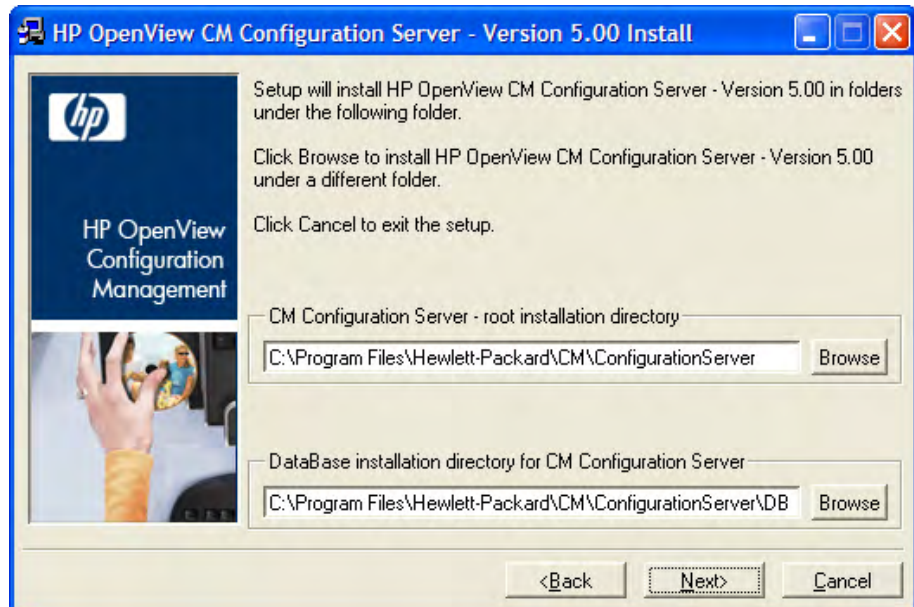
The HP OpenView CM Configuration Server Installation End User Licensing Agreement window opens.

5 Click **Accept**.

- ▶ If **Accept** is not selected, the CM Configuration Server installation program will terminate.

The HP OpenView CM Configuration Server Installation Directory Specifications window opens.

- ▶ In the Directory Specifications window, only ASCII characters are supported for the **root installation directory** setting.



In this window:

- Accept the default Root Installation and default Database Installation directories that are displayed, or...
- Specify the locations, or click **Browse** to navigate to different repositories for the CM Configuration Server and CM Configuration Server Database files.

- ▶ If previous versions of the CM Configuration Server and CM Configuration Server Database are in the default directories, a Directory Update message will appear.

Click **OK** to continue with the update, or click **Cancel** to specify a different location.

6 Click **Next**.

If a previous version of the CM Configuration Server and CM Configuration Server Database are in the default directories, *and* **OK** (to continue with the update) was selected at the Directory Update message, the HP OpenView CM Configuration Server Installation Backup Directory window opens.

In this window:

- Select **Yes** (the default) to have the installation program create a backup of the existing files.

This directory's name is determined by the operating system returning the date and time values of the machine's default time zone.

- Selecting **No** will result in the existing files being deleted.

7 Click **Next**.

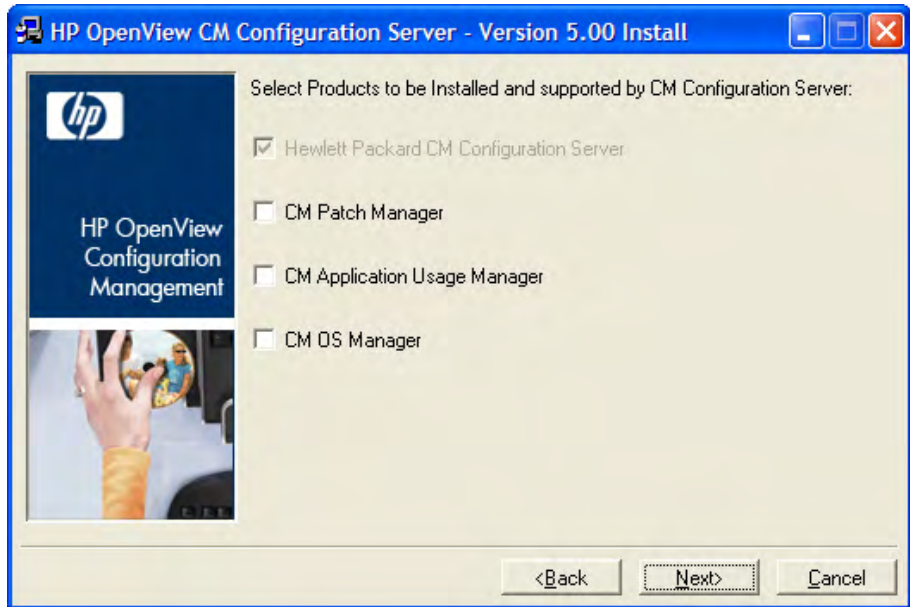
The HP OpenView CM Configuration Server Installation Select Components to Install window opens.

In this window:

- The CM Configuration Server option is selected and disabled—it will be installed.

▶ See [The CM Configuration Server as a Windows Service](#) on page 63.

- Select **CM Patch Manager**, **CM Application Usage Manager**, and/or **CM OS Manager** to automatically include those product installations.



It is important to understand that if these additional products are selected, they do NOT get installed. The CM Configuration Server installation will install ONLY the database decks that are needed to support these products; *the products will still have to be installed via their own installation programs.*

Additionally, if **CM Patch Manager**, **CM Usage Manager**, and/or **CM OS Manager** are selected, the CM Configuration Server installation will not be affected, nor will there be additional dialog boxes.

8 Click **Next**.

The HP OpenView CM Configuration Server Installation Post-Installation Start window opens.

In this window:

- Accept the default (**Yes**) to have the CM Configuration Server automatically start at the conclusion of the installation.
- Select **No** to prevent the CM Configuration Server automatically starting after the installation.

9 Click **Next**.

The HP OpenView CM Configuration Server Installation License File window opens.

In this window:

- If the location and file name that are displayed in the Input location of the license file field are correct, click **Next**. Otherwise,
- Specify the correct location and file name, or click **Browse** to navigate to the license file.

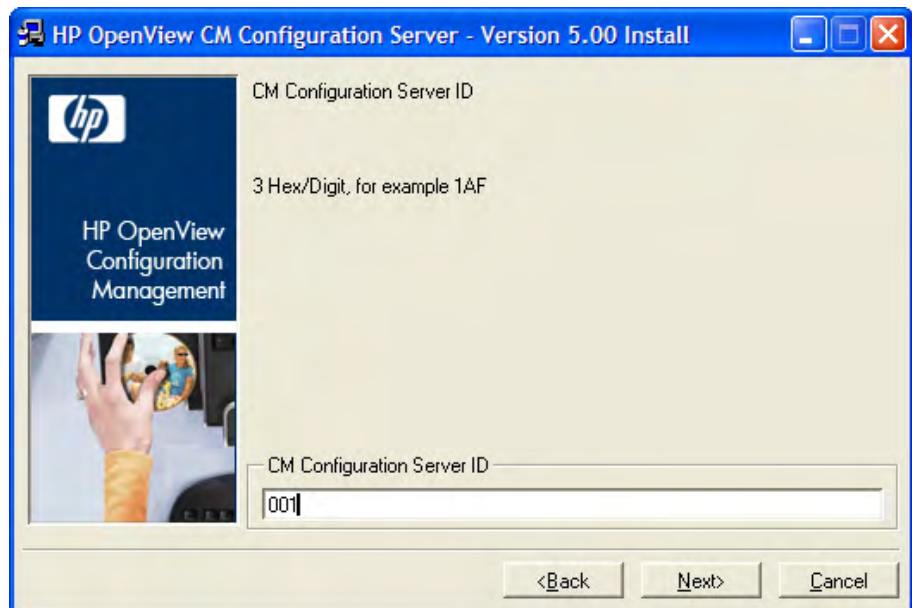
10 Click **Next**.

The HP OpenView CM Configuration Server Installation E-mail Address window opens.

This window offers the option of specifying an e-mail address to which license-expiration notifications will be sent.

11 Click **Next**.

The HP OpenView CM Configuration Server Installation Configuration Server ID window opens.



In this window, specify a three-character ID for the CM Configuration Server. Valid values are within the hexadecimal (0-9 and A-F) range of 001 to EFF. (This ID is used as a prefix in the CM Configuration Server log file.)

This field is required.

12 Click **Next**.

The HP OpenView CM Configuration Server Installation Configuration Server Name window opens.

In this window, specify a name (32-character maximum) for the CM Configuration Server.

This field is required.

13 Click **Next**.

The HP OpenView CM Configuration Server Installation TCP/IP Port window opens.

This window displays the communications port that the CM Configuration Server will use.

- Accept the default port (**3464**) that is specified in this window. (*Recommended*)
- Or specify a different port for CM Configuration Server communications.

14 Click **Next**.

The HP OpenView CM Configuration Server Installation Management Portal Zone Name window opens.

In this window, adhere to the following guidelines to specify a Zone Name that is associated with an instance of the CM Portal.

- Specify a maximum of 64 characters.
- Use only letters (a-z and A-Z), numerals (0-9), and the space character.
- Do not use special characters, such as an underscores, commas, and periods.



For information on CM Portal zone names, refer to the *CM Portal Guide*.

15 Click **Next**.

The HP OpenView CM Configuration Server Installation CM Portal Credentials window opens.

- In this window, specify valid user ID and password credentials for the CM Portal.

16 Click **Next**.

The HP OpenView CM Configuration Server Installation Summary of Installation Input window opens. It presents all the information that was specified during the CM Configuration Server installation. This is the final opportunity to review and modify the specified settings.

- If you discover any errors, or wish to modify any of the entries, click **Back** until you reach the appropriate windows, and make the necessary changes.

The information that was entered in the other windows will not be affected. After making the changes, click **Next** repeatedly, until you arrive back at the Summary of Input window.

- If the CM Configuration Server installation settings are satisfactory, click **Install**.

17 Click **Install**.

The Installation in Progress window opens.

When the installation is complete, the HP OpenView CM Configuration Server Installation Finish window opens.

18 Click **Finish**.

The CM Configuration Server for Windows has been successfully installed.



Be sure to reset the SNMP startup type to its original setting (Automatic).

Re-boot the machine and verify that the SNMP and anti-virus services are restored.

Additionally, the CM Configuration Server *service* (**HP OVCM Configuration Server**) should now be present in the Windows Services list.

- The HP OVCM Configuration Server service will be running if **YES** was selected at step 8, on page 60 of this installation.
- If **NO** was selected, the service will be listed, but not running.

The CM Configuration Server as a Windows Service

During the installation, the CM Configuration Server was set up to run as a Windows Service. Confirm this by checking the Services area of the Windows

machine. As a Windows Service, the CM Configuration Server can be started, stopped, and queried, as described in this section.

Windows Service Options

If the CM Configuration Server is set up to run as a Windows Service, it can be started, stopped, and queried, as described in this section.

To start the CM Configuration Server as a Windows Service

- 1 Click **Start**→**Programs**→**HP OVCM Configuration Server**.
- 2 Select **Windows Services**.
- 3 Select **Start as Windows Service**.

The CM Configuration Server will start. This can be verified by following the steps that are outlined in [To query the CM Configuration Server as a Windows Service](#) below.

To stop the CM Configuration Server as a Windows Service

- 1 Click **Start**→**Programs**→**HP OVCM Configuration Server**.
- 2 Select **Windows Services**.
- 3 Select **Stop as Windows Service**.

It will take approximately two minutes for the CM Configuration Server to shut down. This can be verified by following the steps outlined in [To query the CM Configuration Server as a Windows Service](#) below.

To query the CM Configuration Server as a Windows Service

- 1 Click **Start**→**Programs**→**HP OVCM Configuration Server**.
- 2 Select **Windows Services**.
- 3 Select **Query Windows Service**.

A command-prompt window will appear. This window will display the various aspects of the CM Configuration Server service, such as:

- The name of the service (for the CM Configuration Server, this is **HP OVCM Configuration Server**),
- Whether it's running, and
- It's startup-type selection (automatic or manual).

Using the Windows Event Viewer with the CM Configuration Server

If the CM Configuration Server is running as a Windows Service, the Windows Event Viewer can be used to view key CM Configuration Server messages, such as start-ups and shutdowns.

The Event Viewer displays three types of messages: error, warning, and informational. There are five Event Viewer messages (two informational and three errors) that deal with CM Configuration Server processing. These are described in [CM Configuration Server Messages in Event Viewer](#) on page 66.


Accessing the Event Viewer

The Event Viewer is invoked in a variety of ways on the various Windows operating systems. For instructions on how to access the Event Viewer on your operating system, consult the documentation that was distributed with it.

Filtering for CM Configuration Server Messages

Once the Event Viewer is open, locating messages that are specific to the CM Configuration Server is easy.

To locate CM Configuration Server messages

 The steps outlined below are applicable to most Windows operating systems, and are accurate as of this writing.

- 1 Select **Application**.
- 2 From the Menu bar, click **View** and select **Filter**.
- 3 From the Event Source drop-down list, select **ZTopTask**, and click **OK**.

Now, the right panel of the Event Viewer window displays only those messages that result from CM Configuration Server processing. Verify this by checking that **ZTopTask** is listed in all the rows of the Source column.

CM Configuration Server Messages in Event Viewer

Detailed below are the five Event Viewer messages that deal with CM Configuration Server processing.

- Start-up Message

```
CM-CS:CM Configuration Server HAS STARTED
```

The CM Configuration Server for Windows is beginning its start-up processing by running the **HP OVCM Configuration Server** program.

- Error Message 1

```
START CM-CS:CM Configuration Server CONTROL DISPATCHER FAILED
```

The CM Configuration Server for Windows failed during service initialization. Start-up processing has stopped.

- Error Message 2

```
CM-CS:CM Configuration Server CONTROL HANDLER REGISTRATION  
FAILED IN SERVICE MAIN
```

During second stage initialization, the Windows service controller failed to update the registry keys. Start-up processing has stopped.

- Error Message 2

```
SET CM-CS:CM Configuration Server FAILED IN REPORT STATUS
```

An attempt was made to report the status of the CM Configuration Server for Windows start-up process to the CM Configuration Server service. However, the CM Configuration Server service did not receive the status report.

The CM Configuration Server service may actually be running, or the start-up service has stopped. The CM Configuration Server is unable to discern what the actual condition is.

- Shut-down Message

```
CM-CS:CM Configuration Server STOPPED BY STOP REQUEST OR SHUT-  
DOWN REQUEST
```

The CM Configuration Server has shut down.

4 CM Portal Installation for Windows

At the end of this chapter, you will have:

- An understanding of the CM Portal system requirements for a Windows environment.
- Installed the CM Portal in a Windows environment.
- Logged on to the CM Portal.

► The CM Portal installation files can be downloaded from the HP Configuration Management release media and the installation run from a directory.

However, HP recommends running the installation from the HP Configuration Management media because the installation program needs to access other directories on the media in order to do a complete CM Portal installation.

System Recommendations

Table 20 below lists the system requirements for the installation and operation of the CM Portal. It is recommended that these requirements be strictly considered before installing the CM Portal on a Windows system. installation

- ▶ These recommendations represent typical, minimum operating system estimates.

Table 20 System Recommendations for the CM Portal

Component	Recommendation
Memory	1 GB
Virtual Memory	2 GB
Processor Speed	800 MHz

Pre-Installation Checklist

Prior to beginning the installation, be sure to:

- Locate the license file that is associated with this product installation.
If you need assistance, contact HP Technical Support.
- Locate the following on the HP Configuration Management media (these are used during a complete CM Portal installation):
 - CM Infrastructure media (installs additional CM Portal Zones and CM Proxy Servers from the CM Portal)
 - CM Agents media (installs CM agents from the CM Portal)
- Review the README file that was delivered with the product.

Pre-Installation Tips

- Have the license file easily accessible for the installation.

- Click **Cancel** in any window to exit the installation. If **Cancel** is clicked accidentally, a confirmatory prompt enables the return to the installation program.
- Click **Back** at any time to return to previous windows. All the information entered thus far will remain unchanged.
- Most windows have associated error messages. If specifications are invalid, an error message will appear. Click **OK** and enter valid information.
- This installation program displays default values when applicable. It is recommended that all defaults be accepted; however, they can be overridden by specifying the parameters for your environment.

Pre-Installation Notes

This release uses the **zone** architecture and features in order to support multiple CM Portal sites in an environment. Each CM Portal site that is being managed from the master CM Portal site must have version 5.00 (or later) of the CM Portal installed.

Server Notes

- The CM Portal installation requires Administrator authority.

CM Agent Notes and Access Requirements

- Any platform that supports a web browser.
- In order to access the CM Portal, a machine must be on the same network as the CM Portal host machine and must be running Microsoft Internet Explorer, versions 4.0 and later, or Netscape Navigator, versions 4.0 and later, *with cookies enabled*.
- Microsoft Internet Explorer browser security set no higher than Medium.

Directory Size of a Single Zone

The **Portal Directory** includes all configuration- and entitlement information for the CM Portal as well as devices, groups, managed infrastructure, job status, network, and mounted services information.

Multiple CM Portal zones can be installed in order to accommodate any enterprise. For more information on multiple zones, refer to the *CM Portal Guide*.

CM Portal and the CM Messaging Server

This release of the CM Portal has been optimized to work with the REXX method ZTASKEND and the CM Messaging Server. HP recommends using the CM Portal with the latest versions of ZTASKEND and the CM Messaging Server in order to improve the data-transfer performance between the CM Configuration Server and the CM Portal.

For information on installing and upgrading the CM Messaging Server, refer to the *CM Messaging Server Guide* and the product *Release Notes*.

Installing the CM Portal

This section contains instructions for installing the CM Portal. Before starting this installation, be sure to review:

- [Pre-Installation Checklist](#), starting on page 68
- [Pre-Installation Tips](#), starting on page 68
- [Pre-Installation Notes](#), starting on page 69



This version of the CM Portal must be installed to a clean (empty) directory.

For more information, refer to the *CM Portal Migration Guide*.

To install the CM Portal



Use the procedure in this section to install an enterprise's **first** CM Portal zone.

To install additional CM Portal zones, refer to the *CM Portal Guide*.

- 1 Insert the HP Configuration Management installation media into the optical drive.
- 2 Navigate to the directory that contains the CM Portal installation program for Windows platforms.

```
System Drive:\Infrastructure\extended_infrastructure  
\management_portal\win32
```

- 3 Double-click `setup.exe`.

The installation begins with the HP OpenView CM Portal Installation Welcome window.

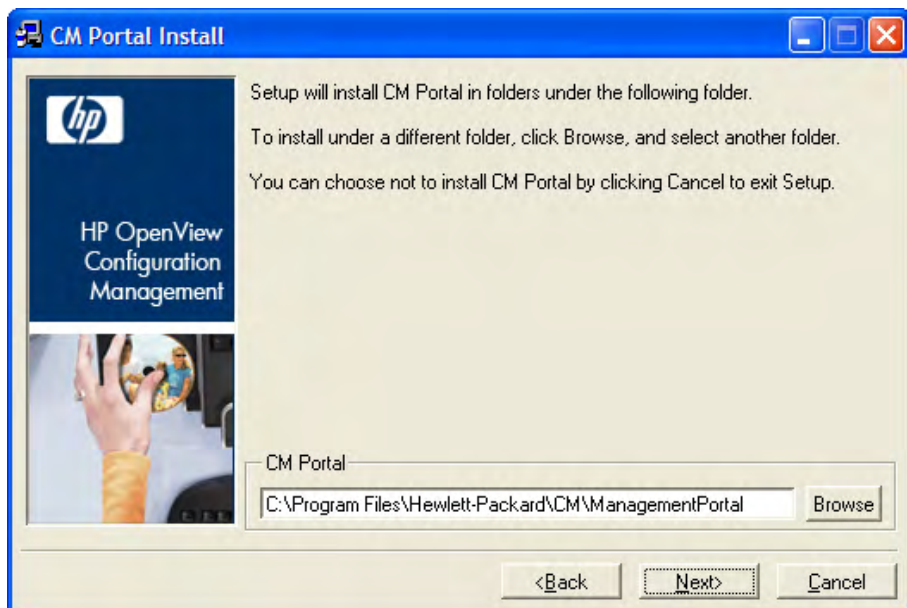
- 4 Click **Next**.

The HP OpenView CM Portal Installation Software License Agreement window opens.

- 5 Click **Accept**.

▶ If **Accept** is not selected, the CM Portal installation program will terminate.

The HP OpenView CM Portal Installation Files Location window opens.



In this window:

- Accept the default installation directory that is displayed (*recommended*), or
 - Click **Browse** to navigate to a different repository for the CM Portal's files.
- ▶ The CM Portal no longer installs into a shared CM Integration Server path, service, and port.

- 6 Click **Next**.

The HP OpenView CM Portal Installation License File window opens.

In this window:

- Specify the location and name of the license file, or
- Click **Browse** to navigate to it.

7 Click **Next**.

The HP OpenView CM Portal Installation Enable Network Discovery window opens.

In this window:

- Click **Yes** to enable network discovery. (*Recommended*)

The CM Portal will be able to automatically discover all the devices in the Windows environment that can be managed by Configuration Management.

- Click **No** to not enable network discovery.

This is preferred if the CM Portal is being tested and the automatic discovery feature is not wanted.

8 Click **Next**.

The HP OpenView CM Portal Installation Network Discovery Interval window opens.

In this window, specify the length of time (in hours) to wait (the interval) for the Network-Discovery job to run:

- Accept the default discovery interval of **24** (hours), or
- Specify a different length of time (valid values are 1 through 24)

9 Click **Next**.

The HP OpenView CM Portal Installation Discovery Start Delay window opens.

In this window, specify the interval (in minutes) after the CM Portal has started before it starts network discovery:

- Accept the default discovery start delay of **15** (minutes), or
- Specify a different delay interval (valid values are 0 through 1440)

This delay applies each time the CM Portal is started.

10 Click **Next**.

The first HP OpenView CM Portal Installation Zone Information window opens.

In this window, specify a CM Portal zone name that will represent this instance of the CM Portal.

- Each instance of the CM Portal in an enterprise must have a unique zone name. Typically, the initial zone name identifies the infrastructure that is being managed; and later installations are names of subordinate zones.
- Be sure to adhere to the following guidelines.
 - Specify a maximum of 64 characters.
 - Use only letters (a-z and A-Z), numerals (0-9), and the space character.
 - Do not use special characters, such as an underscores, commas, and periods.

11 Click **Next**.

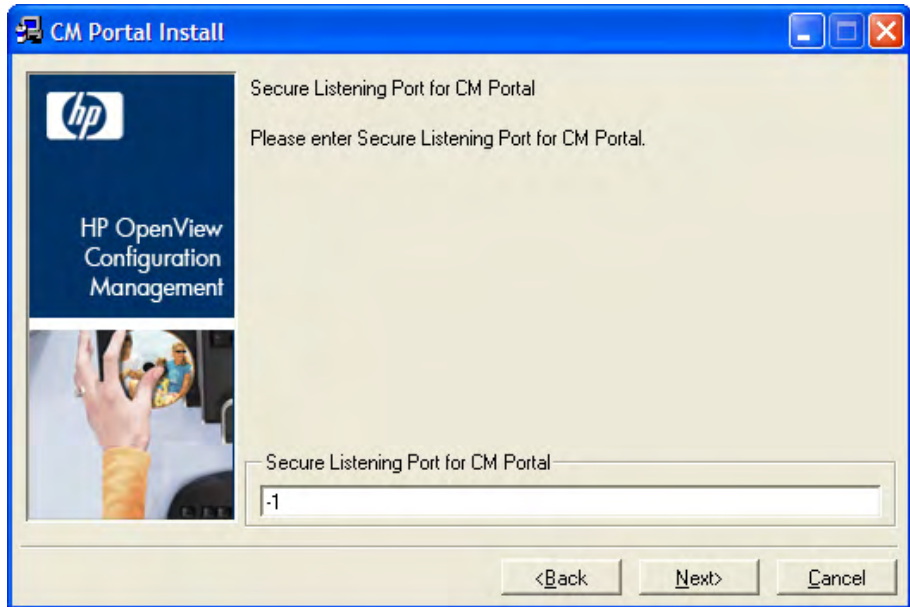
The second HP OpenView CM Portal Installation Zone information window opens.

In this window, specify a CM Portal zone friendly name for this instance of the CM Portal.

- This value is optional and, if omitted, will default to the zone name that was specified in the previous step.
- The friendly name is the zone's display name in the CM Portal user interface.

12 Click **Next**.

The HP OpenView CM Portal Installation Secure Listening Port window opens.



In this window:

- Accept the default value of **-1** to have the CM Portal run on an unsecured port (the default is **3471**), or
- Specify an SSL-secured listening port number for the CM Portal.

13 Click **Next**.

The HP OpenView CM Portal Installation Listening Port for OpenLDAP window opens.

In this window:

- Accept the default listening port of **3474** for the CM Portal zone to communicate with an OpenLDAP Database (*recommended*), or
- Specify a different listening port.

14 Click **Next**.

The HP OpenView CM Portal Installation Listening Port for OpenLDAP Backup window opens.

In this window:

- Accept the default listening port of **3475** for the CM Portal zone to communicate with a *backup* OpenLDAP Database (*recommended*), or
- Specify a different listening port number.

15 Click **Next**.

The HP OpenView CM Portal Installation Enable Backup window opens.

In this window:

- Accept the default (**Yes**) in order to enable the *backup-directory* task (*recommended*), or
- Select **No** to disable this feature.



This option enables the CM Portal backup-directory task—and the resources that it needs—to create a backup of the OpenLDAP Database. The backup-directory task uses the listening port for OpenLDAP Backup (default: **3475**).

Selecting **No** is not recommended unless alternate database replication or backup processes are being used in your environment.

16 Click **Next**.

The HP OpenView CM Portal Installation Summary window opens. It presents all the information that was specified during the CM Portal installation. This is the final opportunity to review and modify the specified settings.

- If you discover any errors, or wish to modify any of the entries, click **Back** until you reach the appropriate windows, and make the necessary changes.

The information that was entered in the other windows will not be affected. After making the changes, click **Next** repeatedly, until you arrive back at the Summary of Input window.

17 Click **Install** to begin the installation.

There will be a prompt to copy the modules that can be used for remote installations of the Configuration Management infrastructure components.

18 Click **Yes**.

The HP OpenView CM Portal Installation Remotely Installable Components Location window opens.

- If necessary, click **Browse** to navigate to the *Infrastructure* directory on the HP Configuration Management media.

19 Click **Next**.

The modules are copied to the CM Portal's `\media` directory.

There will be a prompt to copy the HP OpenView CM client modules that can be used for remote installations.

20 Click **Yes**.

The HP OpenView CM Portal Installation Client Modules window opens.

- If necessary, click **Browse** to navigate to the `Agents` directory on the HP Configuration Management media.

The CM agent modules are copied to the CM Portal's `\media` directory.

21 Click **Finish** when the installation is complete.

The successful installation of the CM Portal results in:

- The CM Portal service (`httpd-managementportal`) automatically starting (the service is listed as **HP OVCM Portal**), and
- The CM Portal Welcome page automatically being displayed.



See [Starting and Stopping the CM Portal](#) below and [Accessing and Logging on to the CM Portal](#) below for information on performing these tasks manually.

Starting and Stopping the CM Portal

To start the CM Portal

- 1 Go to the Windows Services section.
- 2 In the Services panel, right-click **HP OVCM Portal** and select **Start**.

To stop the CM Portal

- 1 Go to the Windows Services section.
- 2 In the Services panel, right-click **HP OVCM Portal** and select **Stop**.

Accessing and Logging on to the CM Portal

To access and log on to the CM Portal

- 1 Open a web browser and in the Address bar, type
http://IP Address or host name:3471.

- Values for *IP_address* and *host name* are those of the CM Portal's host computer.

19 Press **Enter**.

The CM Portal Login page opens.

20 In the **User Name** and **Password** fields, specify one of the following combinations.

- **Admin**

Use this ID to log on with complete access to the CM Portal. We recommend that you do not modify this ID.

The password is **secret**.

- **Guest**

Use this ID to log on as an unauthenticated user without access to tasks.

No password is necessary.

- **Operator**

Use this ID to log on as a user with access to basic operations.

No password is necessary.

- **Test**

Use this ID to experiment with entitlement options.

No password is necessary.

21 Click **Login** (or press **Enter** on the keyboard).

The logon-user ID appears in the banner area and the highest-level representation of the infrastructure appears in the workspace.

To learn more about the CM Portal, refer to the *CM Portal Guide*.

Summary

- The CM Configuration Server and CM Portal can be easily installed and incorporated into a Windows environment.
- The CM Configuration Server and CM Portal can be started and stopped.
- The CM Portal can be accessed using varying levels of authority.

5 CM Enterprise Manager Installation for Windows


At the end of this chapter, you will:

- Be familiar with the system requirements for CM Enterprise Manager.
- Know how to install CM Enterprise Manager.
- Know how to remove CM Enterprise Manager.

System Requirements

Before installing the CM Enterprise Manager, you need to have the following CM products installed in your enterprise. If these products are installed, you will need to identify which will be used by the CM Enterprise Manager.

- CM Configuration Server
- CM Reporting Server
- CM Portal

 The CM Reporting Server is not required for using the CM Enterprise Manager. However, if one is not identified or installed in your enterprise, you will not be able to access any of the CM Reporting Server features in your CM Enterprise Manager.

For information about installing and configuring the CM Reporting Server, refer to the *CM Reporting Server Guide*.

The device on which the CM Enterprise Manager will be installed requires one of the following browsers.

- Microsoft Internet Explorer, version 6.x or later (with patches applied)
- Mozilla Firefox, version 2
- Adobe Flash Player, version 9.0.47.0 or later (download available at www.adobe.com/go/getflashplayer)

The installation and execution of CM Enterprise Manager is not supported on servers that are configured to function as a Windows Terminal Server.

Platform Support

For information about the platforms that are supported in this release, see the accompanying release notes.

Installation Tasks

You must complete the following tasks in order to use all the features of the CM Enterprise Manager. Be sure to have the IP address, hostname, and port for your CM Configuration Server, CM Portal, and CM Reporting Server.

▶ If the CM Enterprise Manager is installed behind a firewall and you will be accessing it from outside the firewall, be sure that the firewall allows incoming network connections on port **8080**. If not, access will be denied.

If you need SSL (secure) access, then the firewall must be configured to allow incoming network connections on port **8443** also.

To install the CM Enterprise Manger and configure CM Portal Settings

1 From the installation media, navigate to the `ec\win32` directory.

2 Double-click the installation executable.

The installation process will check for adequate disk space and other requirements.

3 Follow the prompts and provide the appropriate answers.

After installation, you will be prompted for settings for your CM Portal.

Hostname:*	<input type="text" value="localhost"/> <i>e.g. cmportalserver.mycorp.com</i>
Port:*	<input type="text" value="3471"/> <i>e.g. 3471 or 443</i>
Protocol:*	<input type="text" value="http"/> ▼

4 Type or select the correct settings, and click **Save**.

The settings are then validated.

— If validation fails, an error will be displayed.

— If validation is successful, click **Close** to continue.

You will be automatically redirected to the start page.

User Name

Password

Directory Source ▼

- 5 Sign in with a user name of **admin** and a password of **secret**.



These are the defaults.

For now, the directory source should be the zone that you created when you installed the CM Portal.

- 6 Click **Sign In**.

The CM Enterprise Manager main screen is displayed and you are successfully signed in.

To remove the *CM Enterprise Manager*

- From the **Add or Remove Programs** Control Panel applet, select the HP CM Enterprise Manager.
- Use the standard removal procedure for your operating system.

A UNIX Kernel Tuning

The CM Configuration Server actively uses memory, communications, and *inter-process communications* (IPC), which require the UNIX system's Kernel configuration to make allowances for enough resources. The Kernel configuration parameters differ among UNIX operating systems. The values that are assigned can vary, depending on the CM Configuration Server configuration, considering elements such as the expected number of concurrent tasks and cache management.

Essential Kernel Variables

The tables in this section contain the most important parameters that might need to be adjusted.

- ▶ These values apply to the CM Configuration Server only; they do not take into consideration the requirements of other applications running on the machine.

Most of the CM Configuration Server parameters are specified in the `edmpprof` file, which was created during the CM Configuration Server installation, and which is located in the CM Configuration Server's `home` directory. For more information about CM Configuration Server parameters, refer to the *CM Configuration Server Guide*.

Table 21 below addresses the parameters that are associated with *semaphore management*.

Table 21 UNIX Kernel Settings for Semaphore Management

Kernel Parameter	CM Configuration Server-related Parameter or Recommendation	AIX, HP-UX, and Linux	Solaris
Maximum number of semaphores (system-wide)	TASKLIMIT * 3	semnmi	seminfo_semnmi
Maximum user-accessible semaphores (system-wide)	TASKLIMIT * 3	semmns	seminfo_semmns

Kernel Parameter	CM Configuration Server-related Parameter or Recommendation	AIX, HP-UX, and Linux	Solaris
Enable/Disable semaphores	Enable	sema = 1	N/A
Semaphore value change limit	N/A	semaem = 16384	N/A
Size of free semaphore resource map	semmni + 2	semmap	seminfo_semmap
Maximum un-dos per semaphore	Default	semmnu = 30	seminfo_semmnu
Maximum semaphore un-dos per process	Default	semume = 10	seminfo_semume
Maximum semaphore un-dos per ID	Default	N/A	seminfo_semmsl

Table 22 below addresses the parameters that are associated with *process management*.

Table 22 UNIX Kernel Settings for Process Management

Kernel Parameter	CM Configuration Server-Related Parameter or Recommendation	AIX and HP-UX	Solaris
Maximum process data segment size	N/A	maxdsiz = 0x7b03a000	N/A
Maximum number of processes per user	TASKLIM + 20	maxuprc	N/A
Maximum number of processes (system-wide)	TASKLIM + 20 + 4	nproc = maxuprc + 4	max_nprocs



Use the administrative tool, **ulimit**, to configure the process-management parameters.

Table 23 below addresses the parameters that are associated with *shared memory*.

Table 23 UNIX Kernel Settings for Shared Memory

Kernel Parameter	CM Configuration Server-Related Parameter or Recommendation	AIX, HP-UX, and Linux	Solaris
Enable/Disable shared memory	Enable	shmем	N/A
Maximum shared memory segment size	In the MGR_CACHE section of the edmprof file, operating system-dependent parameters should be set to allow for expected cache segment size.	shmmax recommended setting is: 0x40000000	shminfo_shmmax
Maximum segments on system	In combination with segment size, should allow enough memory for cache.	shmmni (The default size of 200 is adequate.)	shminfo_shmmni
Maximum segments per process	In combination with segment size, should allow enough memory for cache.	shmseg (The default size of 120 is adequate.)	shminfo_shmseg

B Product Name Changes

If you have used Radia in the past, and are not yet familiar with the newly rebranded HP terms and product names, [Table 24](#) below will help you identify naming changes that have been applied to the Radia brand.

Table 24 Product Name and Term Changes

New Name/Term	Old Name/Term
CM agents	Radia clients
HP Configuration Administrator	Radia Administrator Workstation
HP Configuration Management	Radia
HP Configuration Management Admin Agent Explorer	Radia Client Explorer
HP Configuration Management Admin CSDB Editor	Radia System Explorer
HP Configuration Management Admin Packager	Radia Packager
HP Configuration Management Admin Publisher	Radia Publisher
HP Configuration Management Admin Screen Painter	Radia Screen Painter
HP Configuration Management Application Manager	Radia Application Manager, RAM
HP Configuration Management Application Self-service Manager	Radia Software Manager, RSM
HP Configuration Management Application Usage Manager	Radia Usage Manager, RUM
HP Configuration Management Configuration Server	Radia Configuration Server, RCS
HP Configuration Management Distributed Configuration Server	Radia Distributed Configuration Server, Radia DCS, DMA

New Name/Term	Old Name/Term
HP Configuration Management Configuration Server Database	Radia Configuration Server Database, Radia Database
HP Configuration Management Inventory Manager	Radia Inventory Manager, RIM
HP Configuration Management OS Manager	Radia OS Manager, ROMS
HP Configuration Management Patch Manager	Radia Patch Manager, RPM
<i>No longer a stand-alone product in the Configuration Management suite.</i>	Radia Inventory Manager Server
HP Configuration Management Portal	Radia Management Portal, RMP
HP Configuration Management Policy Server	Radia Policy Manager, Radia Policy Server, RPS
HP Configuration Management Multicast Server	Radia Multicast Server
HP Configuration Management Configuration Analyzer	Radia Configuration Analyzer
HP Configuration Management Extensions Windows Installer	Radia Extensions for Windows Installer, REfWI
HP Configuration Management Messaging Server	Radia Messaging Server, RMS
HP Configuration Management Reporting Server	Radia Reporting Server
HP Configuration Management Proxy Server	Radia Proxy Server
<i>No longer a stand-alone product in the Configuration Management suite.</i>	Radia Staging Server, Radia Adapter for HP OpenView, Radia Adapter for HP OpenView Operations,
HP Configuration Management Solutions for Servers	Server Management

Index

A

- accessing, CM Portal
 - Windows, 76
- administrator tools. *See* CM Administrator
- AMPs. *See* CM Application Management Profiles

B

- bin directory, 37, 53
- Bourne shell, 41

C

- cdcase parameter, 41
- cleaning up, CM Configuration Server, UNIX, 50
- CM Admin Agent Explorer, 22
- CM Admin Configuration Server Database Editor, 22
- CM Admin Packager, 22
- CM Admin Publisher, 22
- CM Admin Screen Painter, 22
- CM Administrator, 21
- CM Application Management Profiles, 29
- CM Application Manager, 27
- CM Application Self-service Manager, 27
- CM Batch Publisher, 25
- CM Configuration Analyzer, 26
- CM Configuration Server, 21
 - directories
 - Windows, 53
 - installation
 - GUI
 - UNIX, 44
 - Windows, 57
 - media, 20
 - setup-configuration file
 - UNIX, 42
 - Windows, 55
 - silent, 36, 52
 - Silent
 - UNIX, 43
 - Windows, 57
 - UNIX, 36
 - GUI, 44
 - setup-configuration file, 42
 - Silent, 43
 - user interface, 36, 52
 - Windows, 52
 - GUI, 57
 - setup-configuration file, 55
 - Silent, 57
 - querying as a Windows Service, 64
 - setup.cfg file, 42, 55
 - setup-configuration file, 42, 55
 - DOBACKUP feature, 43
 - starting as a Windows Service, 64
 - stopping as a Windows Service, 64
 - system recommendations
 - UNIX, 38
 - Windows, 54
 - UNIX
 - cleaning up, 50
 - identifying, 50
 - starting, 49
 - stopping, 49
 - UNIX platforms, 36
 - Windows platforms, 52
- CM Distributed Configuration Server, 23
- CM Enterprise Manager, 23
 - configuring CM Portal settings, 81
 - installation
 - media, 23

- installing, 81
- remove, 82
- tasks, 32

CM Extensions for Windows Installer, 23

CM Inventory Manager Agent, 28

CM Knowledge Base Manager, 26

CM Messaging Server, 26, 70

CM Multicast Server, 25

CM OS Manager, 29

CM Patch Manager, 28

CM Policy Server, 24

CM Portal, 25, 70

- access requirements
 - Windows, 69
- accessing
 - Windows, 76
- agent notes
 - Windows, 69
- and Messaging Server, 70
- installation
 - media, 24
 - system recommendations
 - Windows, 68
 - Windows, 67, 70
- settings, 81
- tasks, 32
- Windows
 - logging on, 76
 - user IDs, 77
 - starting, 76
 - stopping, 76
- Windows platforms, 52

CM Portal and CM Enterprise Manager tasks, 32

CM Portal Directory

- troubleshooting, 69

CM Proxy Server, 25

CM Publishing Adapter. *See* CM Batch Publisher

CM Reporting Server, 26

CM Usage Manager, 30

CM Windows Terminal Server, 30

Config Analyzer. *See* CM Configuration Analyzer

Config Server. *See* CM Configuration Server

Configuration Analyzer. *See* CM Configuration Analyzer

Configuration Management

- product media, 16
- supporting documentation, 16

configuring CM Portal settings for CM Enterprise Manager, 81

copyright notices, 2

customer support, 7

D

DB directory, 37, 53

DCS. *See* CM Distributed Configuration Server

directories

- CM Configuration Server
 - Windows, 53

Distributed Manager Adapter. *See* CM Distributed Configuration Server

DMA. *See* CM Distributed Configuration Server

document map, 14

documentation updates, 4

E

edmprof file, 83

environment variables, UNIX, 41

Event Viewer, 65

- accessing, 65
- Application log, 65
- CM Configuration Server messages, 66
- Event Source, 65
- filtering, 65
- messages, 65
- ZTopTask, 65

exe directory, 37

G

GUI installation, CM Configuration Server

- UNIX, 44

Windows, 57

I

identifying, CM Configuration Server, UNIX, 50

installation

CM Configuration Server

UNIX, 36

Windows, 52

CM Portal

Windows, 67

system recommendations

UNIX, 38

Windows, 54

CM Portal, 68

UNIX

CM Configuration Server, 36

Windows

CM Configuration Server, 52

CM Portal, 70

installation media, 16

CM Configuration Server, 20

CM Enterprise Manager, 23

CM Portal, 24

installing CM Enterprise Manager, 81

internet directory, 37, 53

inter-process communications, 83

IPC, UNIX, 83

K

kernel tuning, 83

UNIX, 83

kernel variables, 83

Knowledge Base. *See* CM Knowledge Base Manager

KnowledgeBase. *See* CM Knowledge Base Manager

KnowledgeBase Manager. *See* CM Knowledge Base Manager

L

LD_LIBRARY_PATH, 41

legal notices

copyright, 2

restricted rights, 2

warranty, 2

lib directory, 37, 53

LIBPATH, 41

log directory, 37, 53

logging on, CM Portal

Windows, 76

logon page, 81

M

mail directory, 53

Management Portal. *See* CM Portal

Manager. *See* CM Configuration Server

media

CM Configuration Server installation, 20

CM Enterprise Manager installation, 23

CM Portal installation, 24

Messaging Server. *See* CM Messaging Server

Messenger. *See* CM Messaging Server

Migration Guides, 18

P

PFS package, 40

pfs_mount, 40

platform support, 80

Policy Manager. *See* CM Policy Server

Portable File System, 40

post-installation notes, UNIX, 48

Q

querying, CM Configuration Server, Windows, 64

R

readme file, 18, 68

Release Notes, 18

removing CM Enterprise Manager, 82

Reporting Server. *See* CM Reporting Server
restricted rights legend, 2
rexx directory, 37, 53
Rock Ridge format, 40
root, 39

S

setup-configuration file
 DOBACKUP feature, 57
 UNIX, CM Configuration Server installation, 42
 Windows, CM Configuration Server installation, 55
shell directory, 53
SHLIB_PATH, 41
Silent installation, CM Configuration Server
 UNIX, 43
 Windows, 57
SNMP, 39, 55
starting, CM Configuration Server
 UNIX, 49
 Windows, 64
starting, CM Portal
 Windows, 76
stopping, CM Configuration Server
 UNIX, 49
 Windows, 64
stopping, CM Portal
 Windows, 76
system recommendations
 UNIX, 38
 CM Configuration Server, 38
 Windows, 54
 CM Configuration Server, 54
 CM Portal installation, 68
system requirements, 80

T

TASKLIM, 84
TASKLIMIT, 83

tasks
 CM Portal and CM Enterprise Manager, 32
technical support, 7
Terminal Server. *See* CM Windows Terminal Server
tools for an administrator. *See* CM Administrator
tuning, kernel, 83

U

uninstalling CM Enterprise Manager, 82
UNIX
 environment variables, 41
 installation
 CM Configuration Server
 GUI, 44
 Silent, 43
 post-installation notes, CM Configuration Server, 48
 system recommendations, 38
UNIX kernel tuning, 83
 process management parameters, 84
 semaphore parameters, 83
 shared memory parameters, 85
UNIX system recommendations
 CM Configuration Server, 38
updates to doc, 4

W

warranty, 2
Windows
 installation
 CM Configuration Server
 GUI, 57
 Silent, 57
 CM Portal, 70
 system recommendations, 54
 CM Portal installation, 68
Windows Event Viewer. *See* Event Viewer
Windows Service, CM Configuration Server
 querying, 64
 starting, 64

stopping, 64

Windows system recommendations

CM Configuration Server, 54

CM Portal installation, 68

Windows Terminal Server. *See* CM Windows Terminal Server

Z

zone.mk file, 69

ZTopTask, 65

