

HP

Business Process Insight

For the Windows® Operating System

Software Version: 7.50

Quick Start Guide

Document Release Date: June 2008

Software Release Date: June 2008



Legal Notices

Warranty

The only warranties for HP products and services are set forth in the express warranty statements accompanying such products and services. Nothing herein should be construed as constituting an additional warranty. HP shall not be liable for technical or editorial errors or omissions contained herein.

The information contained herein is subject to change without notice.

Restricted Rights Legend

Confidential computer software. Valid license from HP required for possession, use or copying. Consistent with FAR 12.211 and 12.212, Commercial Computer Software, Computer Software Documentation, and Technical Data for Commercial Items are licensed to the U.S. Government under vendor's standard commercial license.

Copyright Notices

© Copyright 2007, 2008 Hewlett-Packard Development Company, L.P.

Trademark Notices

Java™ is a US trademark of Sun Microsystems, Inc.

Microsoft® is a US registered trademark of Microsoft Corporation.

UNIX® is a registered trademark of The Open Group.

Windows® is a US registered trademarks of Microsoft Corporation.

Support

You can visit the HP Software Support web site at:

www.hp.com/go/hpsoftwaresupport

Contents

1	Overview	5
2	Installing HPBPI	7
	System Requirements	7
	Software Requirements	8
	Database Authentication Mode	9
	Static Port Number Required for Use with HPBPI	10
	Installing HPBPI Components	12
	Introduction	12
	General HPBPI Settings	13
	HPBPI Database Settings	13
	Microsoft SQL Server Database	14
	Oracle Server Database	16
	Pre-Installation Summary	17
	Starting HPBPI Server Components on Windows	18
	Where to Go Next	19

1 Overview

Business Process Insight (HPBPI) is an HP software solution that enables business managers to understand the business impact of system failures, and degraded service performance, on their operations and on their customers.

This document describes the steps required to install the HPBPI software onto your machine for demonstration, or pilot purposes only. You should not use this guide if you want to deploy the HPBPI software for production as there are other considerations that need to be taken into account for a production system; these are described in the Business Process Insight Installation Guide.

Before completing any of the tasks described in this chapter, read the *Business Process Insight Release Notes* to check if there are any last-minute requirements for your installation that could not be covered in this guide. The latest version of the release notes is available on your distribution media.

After completing this installation, you have the HPBPI Server and Modeler installed on your machine. Using these components, you are able to use HPBPI to demonstrate how to create Business Processes and Business Process Monitors, and how to view the processes using the HPBPI Dashboard.

2 Installing HPBPI

In order to install HPBPI, there are a number of system requirements that you need to be aware of.

System Requirements

The following table lists the minimum system requirements for the HPBPI installation on Windows

Table 1 Minimum System Requirements for a HPBPI Installation on Windows

Requirement	Value	How to Check
System Processor	Intel (at least 2Ghz)	Use: Programs > Accessories > System Tools > System Information
Windows version	<ul style="list-style-type: none">• Windows 2003 Server, plus SP2• Windows XP Professional, plus SP2	
Physical memory	1024MB	
Virtual memory	1536MB	
Available disk space	2GB	
		Open My Computer

Software Requirements

The HPBPI installation requires the following software versions to be installed before the installation is started.

Table 2 HPBPI Installation Software Requirements

Software Component	Version
J2SE	SE/JDK 5.0. This version of the J2SE can also be described as JDK version 1.5 and jdk1.5.0. You can download the correct version of the JDK from the following location: http://java.sun.com/products/archive/
Microsoft SQL Server	Microsoft SQL Server 2005 standard edition, plus SP2
Internet Explorer	6 or 7

When you have installed Microsoft SQL Server, you also need to make sure that you have configured it as follows:

- Set the SQL Server and Windows Authentication authentication.
This can be done when you install SQL Server, or after the installation as described in section [Database Authentication Mode](#) on page 9.
- Set a password for the SQL Server database administrator account.
This is the *sa* user. You need to be able to enter the *sa* password as part of the HPBPI installation.
- Installed the most recent Microsoft SQL Server security patches (where appropriate).
- To use static port numbers with HPBPI and not dynamic port numbers; see section [Static Port Number Required for Use with HPBPI](#) on page 10.



You can also use one of the following versions of Oracle if you have Oracle available on your machine:

- Oracle9i Enterprise Edition Release 9.2.0.7
- Oracle Database 10g Enterprise Edition Release 10.2.0.3

You need to make sure that you have the password for an account that has sufficient privileges to create a new User account in Oracle. You need to enter this password as part of the HPBPI installation.

If, as part of your demonstration, you want to configure HPBPI to send violation messages as email notifications, you also need access to an SMTP Server.

Database Authentication Mode

When using Microsoft SQL Server with HPBPI, you need to ensure that when prompted for the Authentication Mode to use within SQL Server that you select the option for SQL Server and Windows Authentication, and not Windows Authentication Mode. This is because the JDBC interface needs the SQL Server Authentication Mode activated.

You can modify the authentication mode from Windows Authentication to be SQL Server and Windows Authentication without affecting other applications that use the database.

Check the authentication mode for your installation of Microsoft SQL Server 2005 installation as follows:

1. Select:

Start | Programs | Microsoft SQL Server 2005 | SQL Server Management Studio

2. From the SQL Server Management Studio Object Explorer, right-click the server where the database is installed that you want to use for HPBPI, and click Properties.

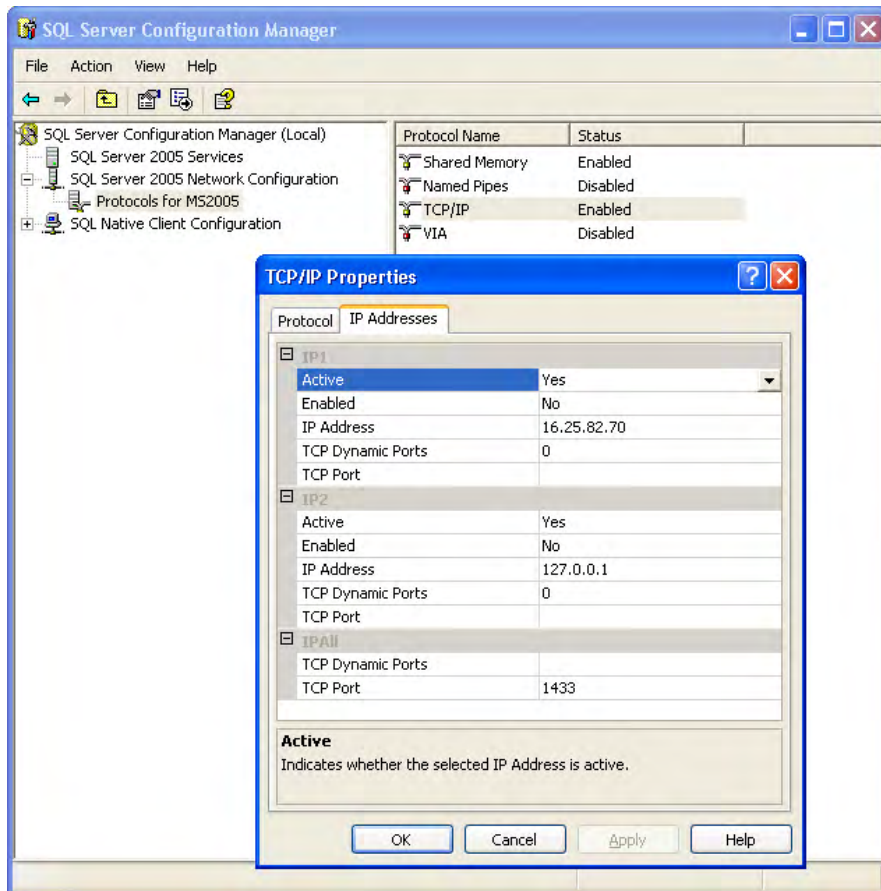
3. Select the `Security` page from the left-hand menu.
The `Security` options are loaded in the right-hand frame.
4. From the `Server authentication` options, make sure that the select the `SQL Server` and `Windows authentication` mode, and then click `OK`.
5. In the `SQL Server Management Studio` dialog box, click `OK`, to acknowledge the need to restart `SQL Server`.

Static Port Number Required for Use with HPBPI

When installing and configuring Microsoft SQL Server for use with HPBPI, you must configure it to use a static and not a TCP dynamic port. If you configure a dynamic port for SQL Server, it can result in a different port number being assigned each time SQL Server is started. You cannot change the port number used by HPBPI following the initial installation, therefore, dynamic port numbers cannot be used.

You configure the port number used by Microsoft SQL Server using the SQL Server Configuration Manager as shown in [Figure 1](#).

Figure 1 SQL Server Static Port Configuration



Installing HPBPI Components

When all the prerequisite steps are complete and your machine has the required software installed and configured you can continue with the installation.



Before starting the installation, make sure that you have shut down all applications that use HP License Manager (Autopass) on the machine where you intend to install HPBPI. If you do not, you might not be able to use these applications or HPBPI following the HPBPI installation.

Complete the steps described in the following sections to install all the HPBPI components for the first time. The steps are subdivided into logical areas so they are easier to follow. You need to complete the steps that are related to the choices that you make during the installation.

Introduction

Starting the installation:

1. From an account with Administration privileges, run the installation procedure, which is located on the distribution media at the following location:

```
cd-drive\i386\hpbpi-install.exe
```

You are presented with an introduction to the installation. Click **Next** to start the installation.

Alternatively, you can follow the link from the `readme` file presented when you insert the CD into the CD drive.



If you see an error message indicating that you have not installed the correct version of the J2SE, you need to stop the installation and make sure that the correct version of the J2SE is installed. You also need to make sure that the system environment is set up as described earlier in this chapter. If this does not resolve the problem, you need to remove all older versions of the J2SE from your machine.

When you have corrected the problem, restart the installation.

General HPBPI Settings

Answer the following questions relating to the HPBPI installation:

1. From the `Choose Install Folder` dialog, click `Next` to accept the default installation directory, or select `Choose`, to navigate to a directory of your choice. There might be a short delay before a navigation window is presented. Click `Next` to continue.
2. From the `Choose Product Features` dialog, select `Server` and `Modeler Installation` and click `Next`.

If the installer detects one or more HP BTO Software products that use the HP License Manager (Autopass) are installed (including a previous version of HPBPI), it displays a `Warning` message. Select `Next` to confirm that you have shutdown all other HP BTO Software products, or select `Cancel` to abort the installation.

3. From the `JDK Home` dialog, click `Next` to accept the home directory where the Java SDK is installed, or select `Choose` to navigate to the correct directory.

If `JAVA_HOME` is not set and `%JAVA_HOME%\bin` is not added to your path, you are not offered a default for this question.

Click `Next` to continue.

Section [HPBPI Database Settings](#) on page 13 describes the questions relating the database that you intend to use to store the HPBPI process data.

HPBPI Database Settings

HPBPI uses a database to store its process definitions and process status information. You need to answer questions relating to the configuration of the database as part of the installation.

1. From the `HPBPI Database Type` dialog, select the database type that you intend to configure for HPBPI. This can be either `Microsoft SQL Server` or `Oracle`.

For `Microsoft SQL Server`, select `Microsoft SQL Server`, click `Next` and continue at section [Microsoft SQL Server Database](#) on page 14.

For an `Oracle Server`, select `Oracle`, click `Next` and continue at section [Oracle Server Database](#) on page 16.

Microsoft SQL Server Database

The following questions relate to the Microsoft SQL Server database questions for HPBPI. These questions relate to values that you have entered when installing the Microsoft SQL Server. If you do not know the answers to these questions, talk to the person who installed Microsoft SQL Server for the information that you need.

1. From the Microsoft SQL Server connection details dialog, enter the details for the Microsoft SQL Server database as follows:

- MS SQL Server host

Use localhost for this parameter value.

- MS SQL Server port

Enter the port number for the database if the default offered is not correct. The default offered is the standard port number used by Microsoft SQL Server, you do not need to change this unless you have configured Microsoft SQL Server to use an alternative port number.

- Admin username

Enter the login username for a database user that has permission to create the HPBPI database, and where appropriate the HPBPI user; for example, the system administrator user, which is sa.

- Admin password

Enter the password for the database user specified in the previous step.

When you have entered all the required information, click Next.

2. From the Microsoft SQL Server user details dialog, enter the details to create the HPBPI database tables as follows:

- Database name

Select the default offered: hbpischema

- Username

Select the default offered: hbpouser

- Password

Enter a password for the Username entered in the previous step. The password must obey the password policy for Microsoft SQL Server. My As an example, for Microsoft SQL Server 2005, you are required to include some numbers. Be aware that the HPBPI installation fails if the password policy is not adhered to.

- Confirm password

Reenter the password for the user as confirmation.

Make sure that you remember these user name and password details as you will need them in the future.

- Database file directory

Enter the location of the database directory files. The installer offers a directory name based on the location following a default Microsoft SQL Server installation. Check the directory details are correct and either accept the directory offered, or enter new directory details.

When you have entered all the required information, click `Next`; you are then presented with the pre-installation summary; see section [Pre-Installation Summary](#) on page 17.

Oracle Server Database

The following questions relate to the Oracle Server database that you have configured for HPBPI. These questions relate to values that you have entered when installing the Oracle Server. If you do not know the answers to these questions, talk to the person who installed the Oracle Server for the information that you need.

1. From the Oracle connection details dialog, enter the following database details:

- Oracle host

Enter the fully qualified domain name of the machine where the Oracle server is installed. You can use `localhost` to specify the machine name if appropriate.

- Oracle port

Enter the port number for the database if the default offered is not correct. The default offered is the standard port number used by Oracle, you do not need to change this unless you have configured Oracle to use an alternative port number.

- Oracle SID

Enter the SID that you have created and that you want to use for the HPBPI database tables.

- Admin username

Enter the login username for a database user that has permission to create the HPBPI database, and where appropriate the HPBPI user; for example, the system user (`system`).

- Admin password

Enter the password for the database user specified in the previous step.

When you have entered all the required information, click `Next`.

2. From the Oracle user details dialog, enter the details to create the HPBPI database tables as follows:
 - Username
Enter `hpbpiuser` as the username that HPBPI can use to log into the database to access its tables, or choose a username of your own.
 - Password
Enter a password for the user entered in the previous step.
 - Confirm password
Reenter the password for the user as confirmation.
Make sure that you remember these user name and password details as you will need them in the future.
 - Database file directory
Enter the location of the database directory files. The installer offers a directory name based on the location following a default Oracle Server installation. Check the directory details are correct and either accept the directory offered, or enter new directory details.

When you have entered all the required information, click `Next`.

Continue at section [Pre-Installation Summary](#) on page 17 as appropriate.

Pre-Installation Summary

From the `Pre-Installation Summary` dialog, check the details on the summary. If they are correct, click `Install`, if they are not, click `Previous` to correct them.

The installation procedure continues and installs the HPBPI directories and files. The installation process takes up to 15 minutes, depending on your machine type and other applications that are running.

When the installation is complete, click `Done` to exit the installation procedure.

Starting HPBPI Server Components on Windows

Start the HPBPI components using the HPBPI Administration Console as follows:

1. Select:

Start | Programs | HP | HP Business Process Insight | Administration

2. Click the Start All button to start all the HPBPI server components.

If you are using an Oracle Server it can take a minute or so for HPBPI components to make a connection (on some systems). There is a retry mechanism for connecting to an Oracle Server when HPBPI is starting, but this retry interval eventually times out. In this case, you might need to have a second attempt at starting some of the HPBPI components that use the database.

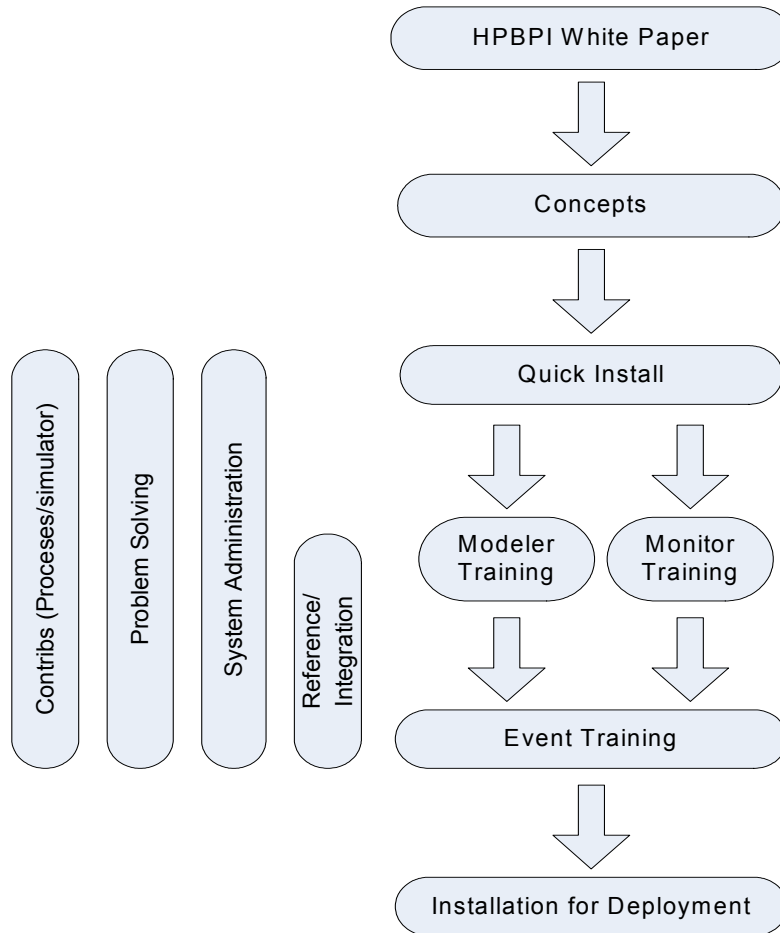
When you have successfully completed the installation and started the HPBPI components, HPBPI operates under a 60-day Instant On license. This is sufficient for a pilot or demonstration; however, for a fully deployed HPBPI system, you need to obtain a valid license as described in the *Business Process Insight Installation Guide*.

Where to Go Next

When you have completed your HPBPI installation, you need to learn more about the product in order to use it.

The following diagram provides an overview of some of the documentation and training materials that are available with HPBPI and shows how the modules are related to each other.

Figure 2 Documentation and Training Map



You have completed a quick installation, which might not be suitable for a production system, but can be used to demonstrate the capabilities of HPBPI.

When you have completed the installation, you need to read the following documents to get an overview of the capabilities of HPBPI:

- *Business Process Insight White Paper*
- *Business Process Insight Concepts Guide*

Having read these documents and familiarized yourself with HPBPI, you can choose to complete the installation verification process, which is described in the *Business Process Insight Installation Guide*. Using this process, introduces you to some of the interfaces, for example, the Modeling interface and the Business Process Dashboard. The verification process also explains how to load one of the example processes and how to use the simulator component to send pre-defined events to the process in order that you can view the process using the Dashboard.

You can also continue and work through the training documents for the Modeler and the Business Process Monitors, in order to further understand how to use the product. These are the documents shown in [Figure 2](#) on page 19.

The following documents should be used as reference material for the tasks described in the Modeler and Business Process Monitors Integration Training Guides:

Business Process Insight System Administration Guide

Business Process Insight Reference Guide

Business Process Insight Problem Solving Guide

