

OPTIMIZE

MERCURY BUSINESS AVAILABILITY CENTER™

Real User Monitor Administration

MERCURY™

BUSINESS TECHNOLOGY OPTIMIZATION

Mercury Business Availability Center

Real User Monitor Administration

Version 6.6

Document Release Date: March 15, 2007

MERCURY™

Mercury Business Availability Center, Version 6.6
Business Process Monitor Administration

This document, and the accompanying software and other documentation, is protected by U.S. and international copyright laws, and may be used only in accordance with the accompanying license agreement. Features of the software, and of other products and services of Mercury Interactive Corporation, may be covered by one or more of the following patents: United States: 5,511,185; 5,657,438; 5,701,139; 5,870,559; 5,958,008; 5,974,572; 6,137,782; 6,138,157; 6,144,962; 6,205,122; 6,237,006; 6,341,310; 6,360,332; 6,449,739; 6,470,383; 6,477,483; 6,549,944; 6,560,564; 6,564,342; 6,587,969; 6,631,408; 6,631,411; 6,633,912; 6,694,288; 6,738,813; 6,738,933; 6,754,701; 6,792,460 and 6,810,494. Australia: 763468 and 762554. Other patents pending. All rights reserved.

U.S. GOVERNMENT RESTRICTED RIGHTS. This Software Documentation is a “commercial item” as defined at 48 C.F.R. 2.101 (October 1995). In accordance with 48 C.F.R. 12.212 (October 1995), 48 C.F.R. 27.401 through 27.404 and 52.227-14 (June 1987, as amended) and 48 C.F.R. 227.7201 through 227.7204 (June 1995), and any similar provisions in the supplements to Title 48 of the C.F.R. (the “Federal Acquisition Regulation”) of other entities of the U.S. Government, as applicable, all U.S. Government users acquire and may use this Documentation only in accordance with the restricted rights set forth in the license agreement applicable to the Computer Software to which this Documentation relates.

Mercury, Mercury Interactive, the Mercury logo, the Mercury Interactive logo, LoadRunner, WinRunner, SiteScope and TestDirector are trademarks of Mercury Interactive Corporation and may be registered in certain jurisdictions. The absence of a trademark from this list does not constitute a waiver of Mercury's intellectual property rights concerning that trademark.

All other company, brand and product names may be trademarks or registered trademarks of their respective holders. Mercury disclaims any responsibility for specifying which marks are owned by which companies or which organizations.

Mercury provides links to external third-party Web sites to help you find supplemental information. Site content and availability may change without notice. Mercury makes no representations or warranties whatsoever as to site content or availability.

Mercury Interactive Corporation
379 North Whisman Road
Mountain View, CA 94043
Tel: (650) 603-5200
Fax: (650) 603-5300
<http://www.mercury.com>

© 2005-2007 Mercury Interactive Corporation, All rights reserved

If you have any comments or suggestions regarding this document, please send them by e-mail to documentation@mercury.com.

Table of Contents

Welcome to Real User Monitor Administration	5
How This Guide Is Organized	5
Who Should Read This Guide	6
Getting More Information	6

PART I: REAL USER MONITOR INTRODUCTION AND SYSTEM REQUIREMENTS

Chapter 1: Introducing Real User Monitor Administration.....	9
Overview of Real User Monitor	9
How the Real User Monitor Works	10
Ports and Types of Communication Used by Real User Monitor	13
Installing and Administering Real User Monitor.....	14
Chapter 2: Reviewing System Requirements.....	17
Real User Monitor Engine Requirements	18
Real User Monitor Repository (MySQL Database) Requirements	18
Real User Monitor Probe Requirements	19

PART II: INSTALLING REAL USER MONITOR

Chapter 3: Installing the Real User Monitor Engine.....	25
Installing the Mercury Real User Monitor Engine on a Windows Platform	25
Chapter 4: Installing the Real User Monitor Probe	35
Physically Connecting the Probe	35
Installing the Probe	37
Stopping and Starting the Probe	39
Chapter 5: Uninstalling Real User Monitor.....	41
Uninstalling Mercury Real User Monitor on a Windows Platform	41

PART III: CONFIGURING AND ADMINISTERING REAL USER MONITOR

Chapter 6: Configuring the Real User Monitor Probe45
Using SSL to Access the Real User Monitor Probe Console46
Limiting WebConsole Resources.....46

**Chapter 7: Configuring and Administering the Real User
Monitor Engine49**
Administering Real User Monitor50
Using the Real User Monitor Web Console52
Using the Real User Monitor JMX Console100
URL Correlation Parameters.....105
Configuring Meaningful Page Names109
Unifying Frames137

Chapter 8: Administering the MySQL Database 141
Overview of the MySQL Database.....141
Creating and Connecting to the MySQL Database.....142
Starting and Stopping the MySQL Database.....142
Maintaining the MySQL Database143

Index..... 145

Welcome to Real User Monitor Administration

This guide provides detailed instructions on how to install, configure, and administer the Mercury Real User Monitor data collector.

Note: If you are a Mercury Managed Services customer, you must contact a Mercury Customer Support representative to receive connection information that will enable you to work with Real User Monitor.

How This Guide Is Organized

The guide contains the following chapters:

Part I Real User Monitor Introduction and System Requirements

Introduces Real User Monitor and the platform system requirements, and explains how Real User Monitor works.

Part II Installing Real User Monitor

Explains how to install and uninstall the Real User Monitor engine. Also explains how to install one or more Real User Monitor probes.

Part III Configuring and Administering Real User Monitor

Explains how to configure a Real User Monitor probe by changing the default settings as well as how to configure and administer the Real User Monitor engine. Also explains how to administer Real User Monitor's MySQL database.

Who Should Read This Guide

This guide is intended for the following users of Mercury Business Availability Center:

- Mercury Business Availability Center administrators
- Mercury Business Availability Center data collector administrators

Readers of this guide should be knowledgeable about enterprise system administration and Mercury Business Availability Center data collectors.

Getting More Information

For information on using and updating the Mercury Business Availability Center Documentation Library, reference information on additional documentation resources, typographical conventions used in the Documentation Library, and quick reference information on deploying, administering, and using Mercury Business Availability Center, refer to *Getting Started with Mercury Business Availability Center*.

Part I

Real User Monitor Introduction and System Requirements

1

Introducing Real User Monitor Administration

This chapter introduces Mercury Real User Monitor and explains how it works.

This chapter describes:	On page:
Overview of Real User Monitor	9
How the Real User Monitor Works	10
Ports and Types of Communication Used by Real User Monitor	13
Installing and Administering Real User Monitor	14

Overview of Real User Monitor

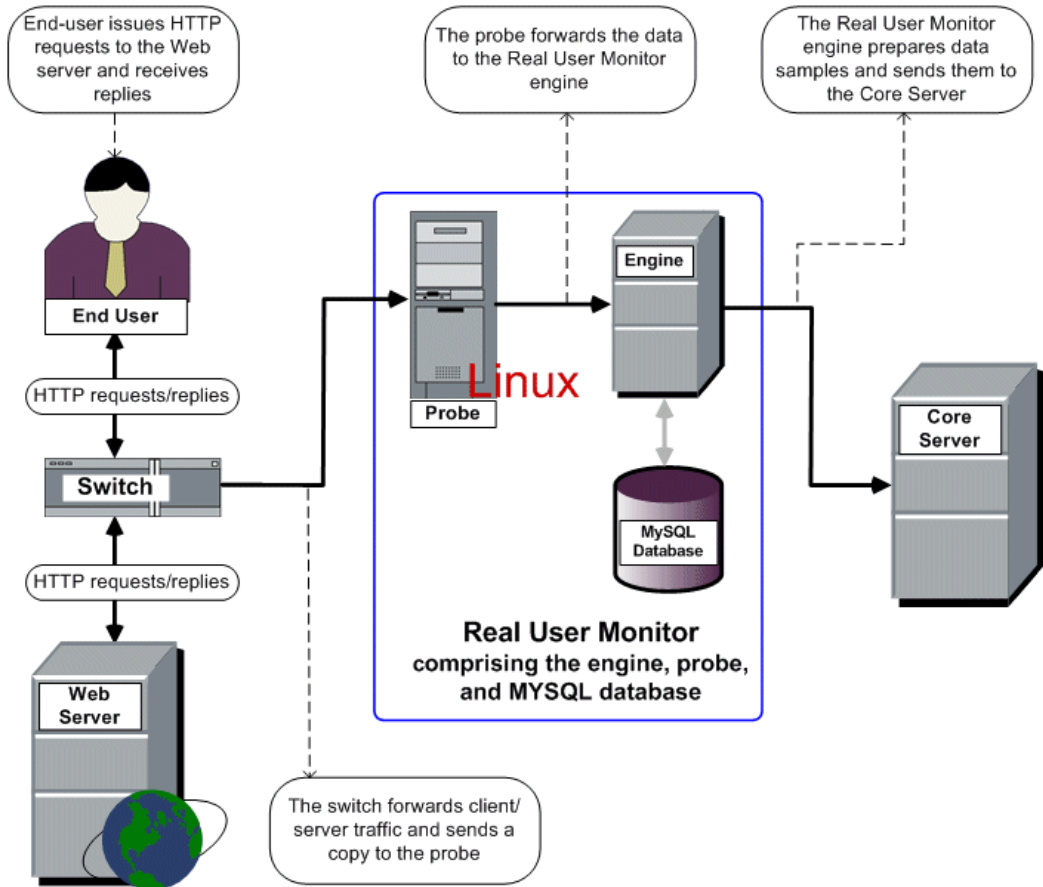
Mercury Real User Monitor measures the end-user experience of real users, enabling administrators to pinpoint the cause of delays and quantify the business impact of detected performance issues related to end-users. Monitoring real traffic generated by end-users, Real User Monitor collects network and server performance and availability data in real time. When performance and availability exceed specified thresholds, Mercury Business Availability Center proactively alerts application managers who, using the Real User Monitor reports, analyze the collected data in order to isolate the root cause of detected problems.

How the Real User Monitor Works

Mercury Real User Monitor consists of three major components: the probe, the engine, and the MySQL database.

- ▶ The **probe** is a non-intrusive, passive listening device that is subject to the same traffic the server receives. It is plugged into a network tap that is connected to a monitored Web server. As end-user traffic passes through the tap, the probe listens to requests and responses sent to and from the Web server. In this way, data is tracked all the way from the end-user's IP address to the Web server handling the request.
- ▶ The **engine** receives the data collected by the probe and assembles this data according to the configuration specifications it receives from Mercury Business Availability Center, that have been configured in Monitor Administration. The engine transmits the page, transaction, end-user, and server data samples it creates to the Mercury Business Availability Center Core Server. The Mercury Business Availability Center Core Server then distributes the data to the relevant Mercury Business Availability Center components, which create Real User Monitor alerts, reports, and Dashboard views.
- ▶ The **MySQL database** acts as Real User Monitor's repository for data that the Real User Monitor engine does not forward to Mercury Business Availability Center immediately, or at all. The MySQL database stores the Real User Monitor engine's configuration settings, session click-streams (pages and snapshots included in a session), and the open sessions summary.

The following diagram shows how Real User Monitor receives client/server traffic and passes it on to Mercury Business Availability Center.

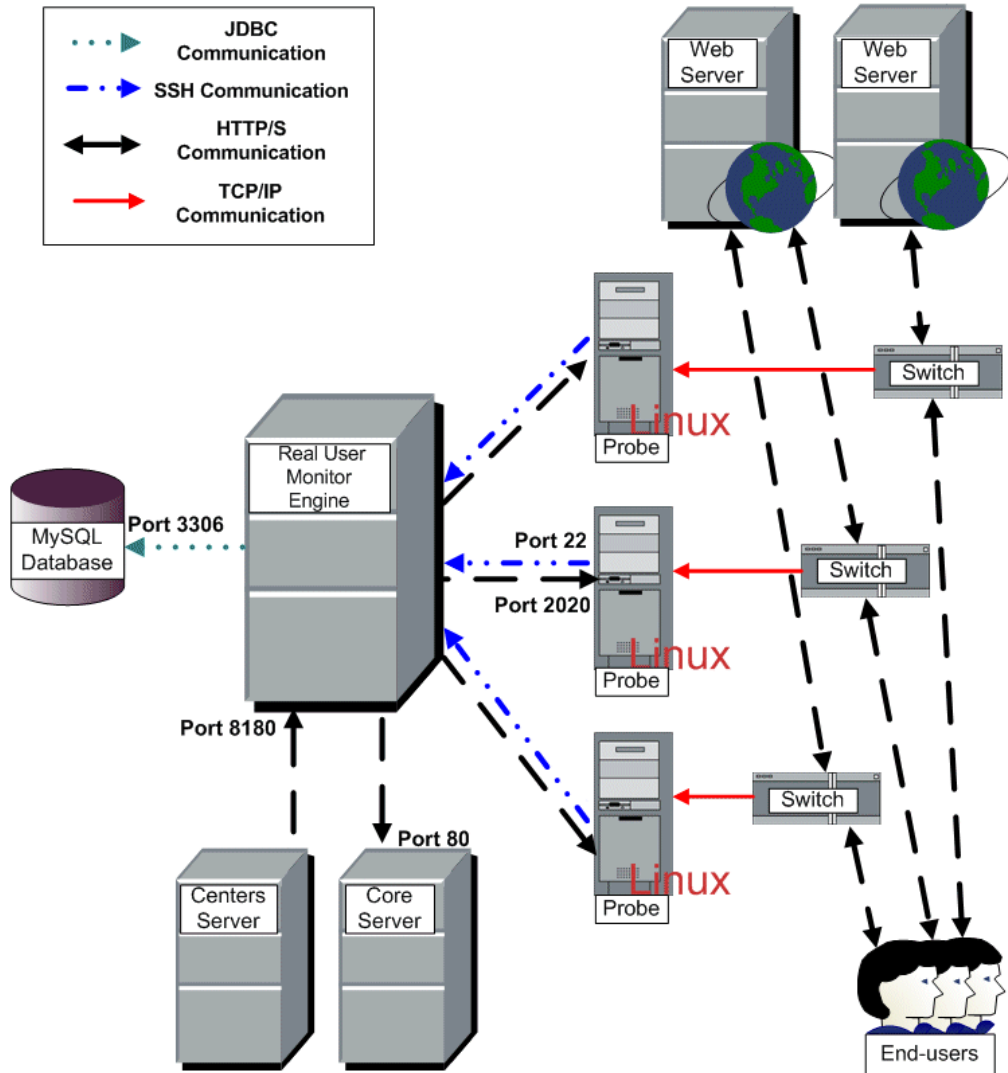


You use the Real User Monitor reports to analyze performance and availability data for the servers, pages, transactions, events, and end users that you configure for monitoring, as well as general statistics that are collected and sent by the probe(s) to the engine. When notified by an alert that a certain performance or availability threshold has been exceeded, you can examine the issue in the appropriate report(s) and try to pinpoint the cause of the problem and the time at which the problem occurred. For detailed information on Real User Monitor reports, see “Real User Monitor Reports” in *Using End User Management*.

In addition, Real User Monitor data is included in Dashboard. For information on displaying Real User Monitor data in Dashboard, see “Real User Monitor Views in Dashboard” in *Using Dashboard*.

Ports and Types of Communication Used by Real User Monitor

The following diagram shows the various ports and type of communications used by Real User Monitor, both internally and externally.



Installing and Administering Real User Monitor

To begin using Real User Monitor, you must perform the following steps (once you have installed Mercury Business Availability Center):

1 Install the Real User Monitor engine.

For information on installing the Real User Monitor engine and setting up the engine to connect to the Core Server, see “Installing the Real User Monitor Engine” on page 25.

2 Create and connect to the MySQL database.

You can create and connect to the MySQL database either as part of the Real User Monitor engine installation procedure or separately, at a later time. For details on creating the MySQL database as part of the Real User Monitor engine installation procedure, see “Installing the Real User Monitor Engine” on page 25. For details on creating the MySQL database at a later time, see “Overview of the MySQL Database” on page 141.

3 Install one or more Real User Monitor probes.

For information on installing a Real User Monitor probe and setting it up to report real-user activity data to the engine, see “Installing the Real User Monitor Probe” on page 35.

4 If necessary, reconfigure the connection between the Real User Monitor and Mercury Business Availability Center.

If connection parameters (such as SSL, proxy, and authentication) have changed since the installation of Mercury Business Availability Center, use the Real User Monitor engine’s Web console to reconfigure the connection between the Real User Monitor and Mercury Business Availability Center. For detailed information, see “Using the Real User Monitor Web Console” on page 52.

5 Configure Real User Monitor in Mercury Business Availability Center Monitor Administration.

In Monitor Administration, you add the Real User Monitor engine you installed to the monitor tree. You then add one or more probes to the engine and configure the probe(s) to collect data from specific Web servers. In addition, you configure the specific pages, transactions, events, and end users you want to monitor. For more information, see “Configuring the Real User Monitor” in *End User Management Data Collector Configuration*.

Note: You can create Real User Monitor alerts if you want to be notified of certain occurrences while monitoring real-user data. You can view reports of the data collected by Real User Monitor in the End User Management application. For information on configuring alerts, see “Creating Alert Schemes” in *Platform Administration*. For information on viewing Real User Monitor reports, see “Real User Monitor Reports” in *Using End User Management*.

2

Reviewing System Requirements

This section describes the recommended system requirements for running Real User Monitor.

This chapter describes:	On page:
Real User Monitor Engine Requirements	18
Real User Monitor Repository (MySQL Database) Requirements	18
Real User Monitor Probe Requirements	19

Real User Monitor Engine Requirements

Computer/Processor	Dual-CPU Xeon 3.0 GHz Server
Operating System	Windows: Windows 2000 Server/Advanced Server, Service Pack 4 Windows 2003 Server standard/enterprise, Service Pack 1
Memory	2 GB
Hard Drive	70 GB
Network Card	Gigabit network adaptor

Real User Monitor Repository (MySQL Database) Requirements

Computer/Processor	Dual-CPU Xeon 3.0 GHz Server
Operating System	Windows: Windows 2000 Server/Advanced Server, Service Pack 4 Windows 2003 Server standard/enterprise, Service Pack 1
Memory	2 GB
Hard Drive	200 GB fast hard drive
Network Card	Gigabit network adaptor
MySQL Version	5.0 (installed by the Real User Monitor installation program)

Real User Monitor Probe Requirements

Hardware and Operating System Requirements

	Minimum	Recommended
Computer/Processor	Dual-CPU Xeon 3.0 GHz Server	Dual-CPU Xeon 3.0 GHz Server
Operating System	Red Hat Enterprise Linux (RHEL) version 4	Red Hat Enterprise Linux (RHEL) version 4
Memory	2 GB	4 GB
Hard Drive	70 GB IDE/SATA	150 GB SCSI SCSI required for high traffic levels of more than 15 MBs. Large disk space required for more than one page back on Snapshot on Error (SSOE).

	Minimum	Recommended
Network Card	<p>For connecting tap or port mirrored cable:</p> <p>1 Intel Pro/1000 (10/100/1000 auto-sensing)</p> <p>For connecting to management port (used by RUM engine):</p> <p>1 Intel Pro/100 (10/100 auto-sensing) set for full duplex</p> <p>For copper connections, MT type card required.</p> <p>For fibre optic connections, MF type card required.</p>	<p>For connecting tap or port mirrored cable:</p> <p>2 Intel Pro/1000 (10/100/1000 auto-sensing)</p> <p>For connecting to management port (used by RUM engine):</p> <p>1 Intel Pro/100 (10/100 auto-sensing) set for full duplex</p> <p>For copper connections, MT type card required.</p> <p>For fibre optic connections, MF type card required.</p>
PCI Slot		1 free 133/100/66 MHz 64 bit PCI slot

Environment and System Requirements

Requirement	Description
Perl	<p>Perl must be installed with the following libraries:</p> <ul style="list-style-type: none"> ➤ LWP::UserAgent ➤ URI::URL
ssh daemon	<ul style="list-style-type: none"> ➤ Port 22 must be open ➤ Xinetd daemon must be up and listening to ssh clients

Requirement	Description
beatbox user	A user called beatbox is automatically created during installation, but you must manually configure a password for this user. When entering the Real User Monitor probe user and password in Monitor Administration, you must use either the root or beatbox user (for details, see “Adding a Real User Monitor Engine” in <i>End User Management Data Collector Configuration</i>).
Probe console port	Port 2020 is the default port used for accessing the Real User Monitor probe console. If you want to use SSL for accessing the Real User Monitor probe console, you use Apache Web Server as a proxy, limit port 2020 to localhost connections only and open port 443 on the Apache Web Server. For details, see “Using SSL to Access the Real User Monitor Probe Console” on page 46.
Permissions	The following directories must have 2770 permissions, be owned by beatbox and belong to the beatbox group: <ul style="list-style-type: none"> ➤ /var/spool/beatbox (and subdirectories) ➤ /etc/beatbox ➤ /var/log/beatbox

Part II

Installing Real User Monitor

3

Installing the Real User Monitor Engine

To monitor real user activity, you must first install the Mercury Real User Monitor engine.

You download the Real User Monitor engine installation file from the Downloads page, which you access from the Setup and Maintenance tab in Platform Administration.

The Real User Monitor installation procedure installs both the Real User Monitor engine and the MySQL database. You can install both the engine and the database on the same machine, or on different machines. To install the engine and database on different machines, install the MySQL database first and then install the engine and connect it to the database.

This chapter describes:	On page:
Installing the Mercury Real User Monitor Engine on a Windows Platform	25

Installing the Mercury Real User Monitor Engine on a Windows Platform

For details on the system requirements for installing the Mercury Real User Monitor engine on a Windows platform, see “Real User Monitor Engine Requirements” on page 18.

To install the Real User Monitor engine on a Windows Platform:

- 1 Click the **Mercury Real User Monitor Engine for Windows** link on the Downloads page to download the **MercuryRUMSetup_win.exe** file to the machine on which you want to install the engine.

Note: For the Real User Monitor engine setup file to be available on the Downloads page, it must first be installed to Mercury Business Availability Center. For details on installing Mercury Business Availability Center components setup files, see “Installing Components Setup Files to the Mercury Business Availability Center Downloads Page” in *Deploying Servers*.

If you prefer, you can copy the Real User Monitor engine setup program directly from the Mercury Business Availability Center 6.5 Components – Windows CD-ROM, for versions delivered on CD-ROM.

- 2** On this machine, navigate to the downloaded file and double click **MercuryRUMSetup_win.exe**. The Real User Monitor Engine Setup begins.
- 3** When the Setup Welcome screen is displayed, click **Next**.
- 4** Accept the terms of the license agreement and click **Next**.
- 5** Select the path of the directory in which you want to install the Real User Monitor engine. Accept the default path, or click **Browse** to select a different directory. Click **Next**.
- 6** Select the type of installation you want to perform, **Typical** or **Custom**.

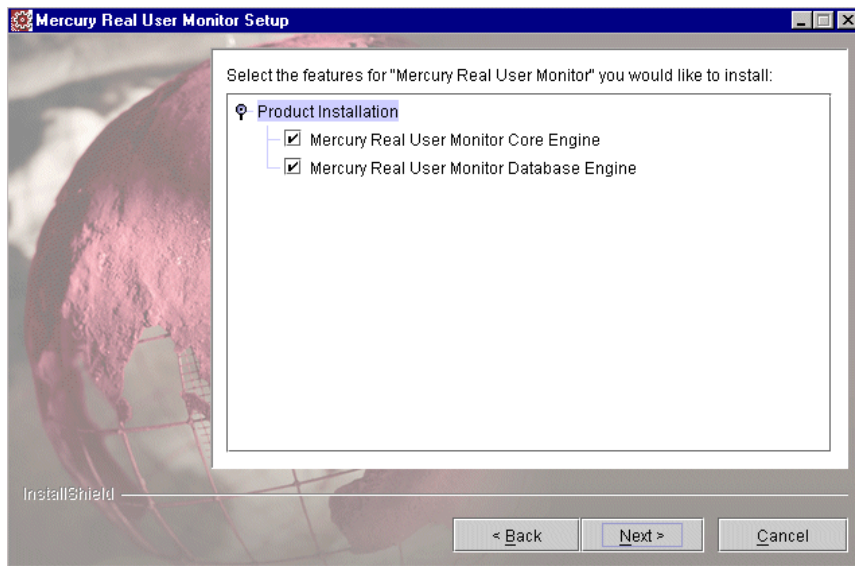
A typical installation installs both the Real User Monitor engine and the MySQL database.

In a custom installation, you can choose whether to install the Real User Monitor engine, the MySQL database, or both.

Click **Next**.

If you chose **Typical** installation, skip to step 8 on page 28 to continue.

- 7 If you chose **Custom** installation, select the features you want to include by checking the box to the left of the required feature. You can select one, or both of the features.



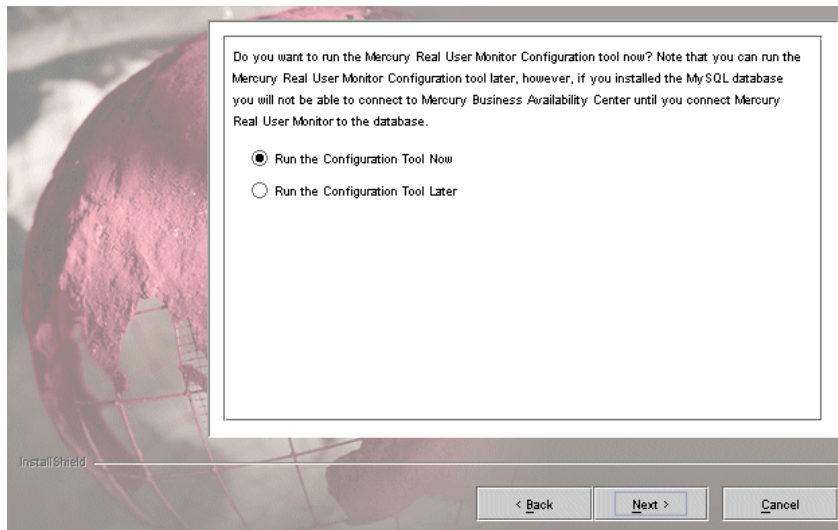
Click **Next**.

Note:

If you choose **Mercury Real User Monitor Database Engine** only, the MySQL database will be installed in the specified location, but no database schema will be created.

If you choose **Mercury Real User Monitor Core Engine** only and do not connect to a database, you are unable to configure connection settings to Mercury Business Availability Center during the installation. You can configure connection settings to Mercury Business Availability Center later via the Real User Monitor Web console (for details, see “BAC Connection Settings” on page 69).

- 8 Read the summary information. If it is correct, click **Next** to continue with the installation. If it is not correct, click **Back** to correct the information you previously provided.
- 9 If necessary, Setup prompts you to reboot the machine on which you are installing Real User Monitor. Select whether to reboot now, or at a later stage. Click **Next**.
- 10 Select whether you want to run the Real User Monitor Configuration tool. You can choose to run the Configuration tool at a later time, but you will not be able to work with Real User Monitor until you have configured the MySQL database settings and have connected the Real User Monitor engine to the database. For details of running the Configuration tool at a later time, see “Creating and Connecting to the MySQL Database” on page 142.



Click **Next**.

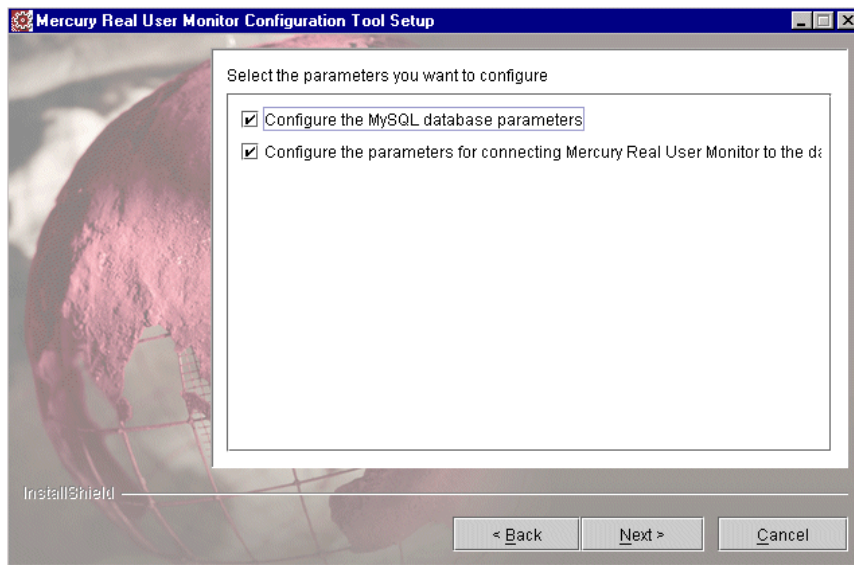
- 11 Click **Finish** to exit the Setup wizard.

If you chose to run the Configuration tool, continue with the following steps, but note that to configure database and connection settings you must have both a Real User Monitor engine installed and access to an existing MySQL database.

- 12** When the Configuration tool Welcome screen is displayed, click **Next**.

If you chose **Custom installation > Mercury Real User Monitor Core Engine** only, skip to step 15 on page 30 to continue. Otherwise, continue with the next step.

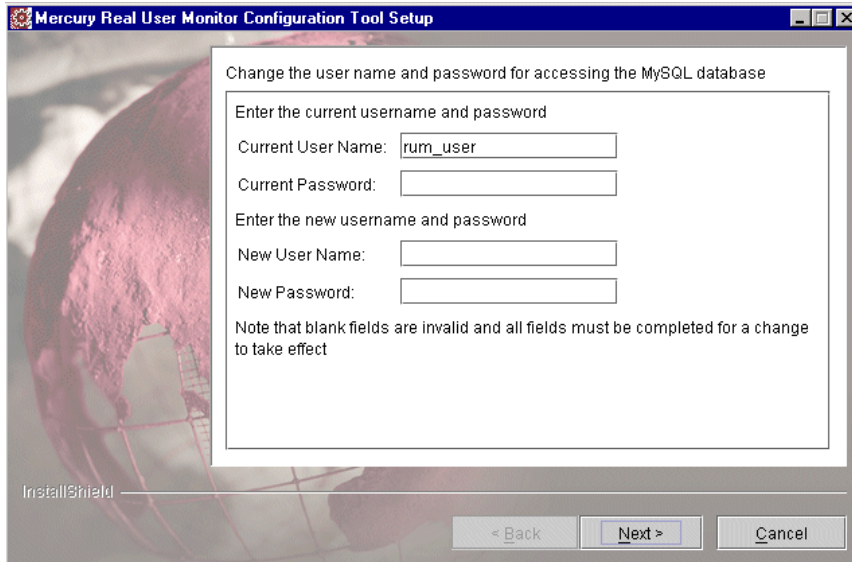
- 13** Select the parameters you want to configure. You can configure the MySQL database parameters, the parameters used by the Real User Monitor engine to connect to the MySQL database and to Mercury Business Availability Center, or both.



Click **Next**.

If you chose to configure the parameters used by the Real User Monitor engine to connect to the MySQL database and to Mercury Business Availability Center only, skip to step 15 on page 30 to continue, otherwise proceed with the next step.

- 14 Enter the user name and password for accessing the MySQL database, or accept the defaults. If you change the default settings, note that blank fields are invalid and all fields must be completed for a change to take effect.

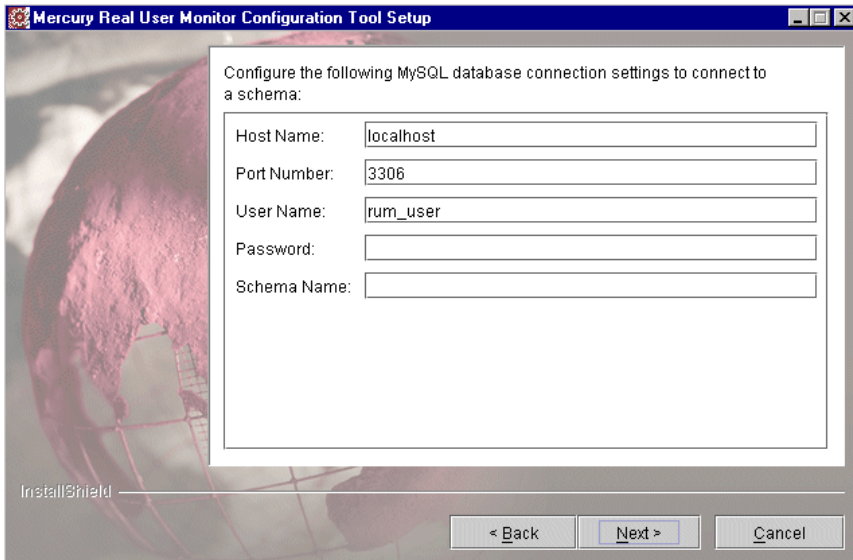


Click **Next**.

If you chose to configure the MySQL database parameters only, skip to step 20 on page 34, otherwise proceed with the next step.

- 15 Select whether you want to create a new user schema for the MySQL database, or connect to an existing user schema. Click **Next**.

- 16** Configure the MySQL database settings. You can configure the host name of the machine where the MySQL database resides, as well as the port number for accessing this machine, or you can accept the default settings as they appear below. You can also change the default user name for accessing the MySQL database machine and can define a password for the user. In the **Schema Name** field, you specify the name for the MySQL database schema.



Mercury Real User Monitor Configuration Tool Setup

Configure the following MySQL database connection settings to connect to a schema:

Host Name:

Port Number:

User Name:

Password:

Schema Name:

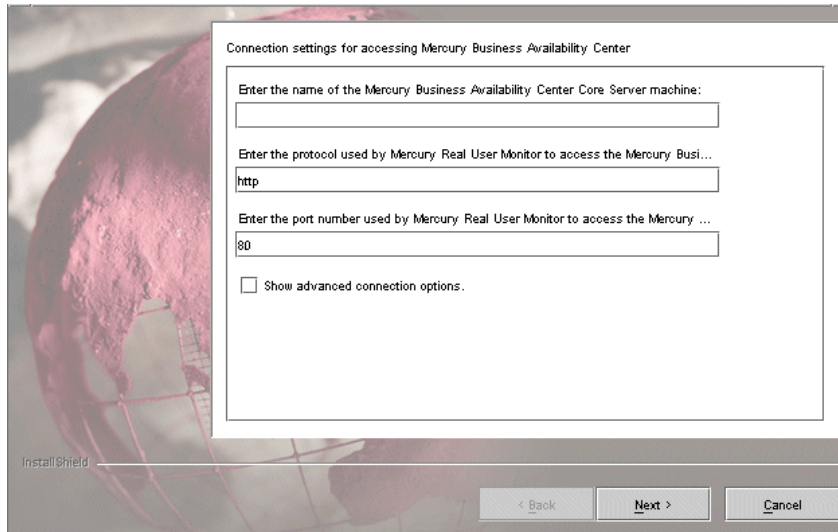
InstallShield

< Back Next > Cancel

Click **Next**.

If you chose **Custom installation > Mercury Real User Monitor Database Engine** skip to step 20 on page 34, otherwise proceed with the next step.

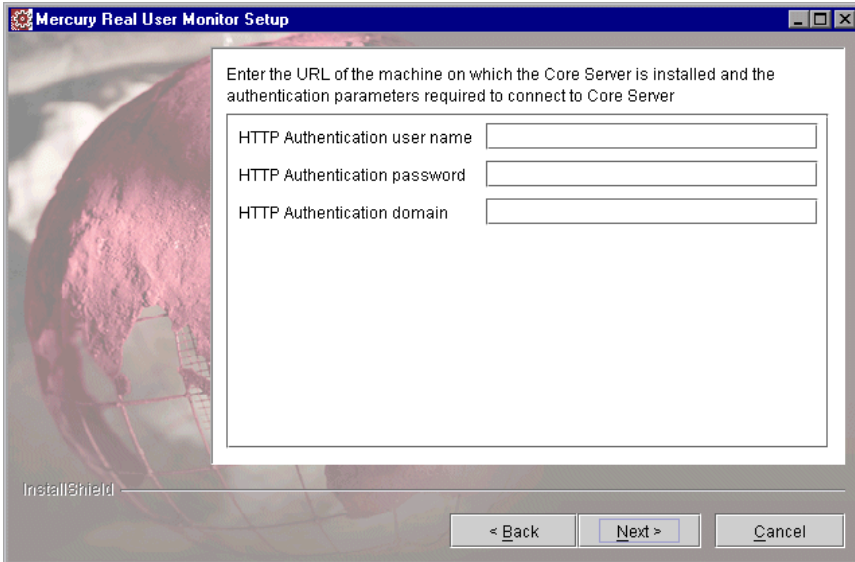
- 17 In the Real User Monitor Connection Settings dialog box, select the protocol (HTTP or HTTPS) via which the Real User Monitor engine connects to the Mercury Business Availability Center Core Server. (For details on configuring a reverse proxy or SSL, see “BAC Connection Settings” on page 69.) Enter the Core Server machine name and the port number through which you want the Real User Monitor engine to communicate with the Core Server. Note that by default, the port number is 80. Check the **Show advanced options** box to configure HTTP authentication or reverse proxy settings.



Click **Next**.

If you checked the **Show advanced options** box continue with the next step for additional connection settings. Otherwise, skip to step 20 on page 34 to continue.

- 18** In the first advanced connection settings screen, enter the HTTP Authentication user name and password for connecting to the Core Server as well as the URL of the machine on which the Core Server is installed. For details on configuring basic authentication, see “BAC Connection Settings” on page 69.



Mercury Real User Monitor Setup

Enter the URL of the machine on which the Core Server is installed and the authentication parameters required to connect to Core Server

HTTP Authentication user name

HTTP Authentication password

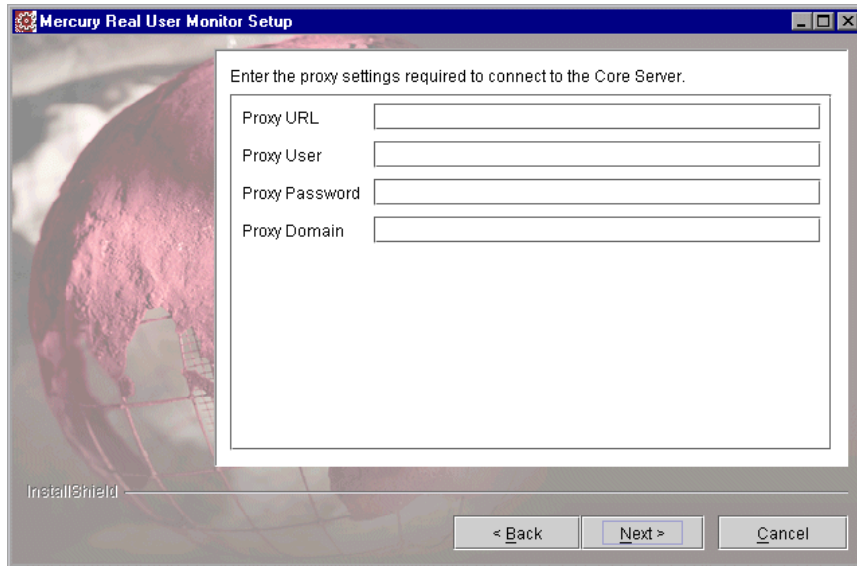
HTTP Authentication domain

InstallShield

< Back Next > Cancel

Click **Next**.

- 19 In the second advanced connection settings screen, enter the proxy settings required for connecting to the Core Server. For details on configuring a reverse proxy or SSL, see “BAC Connection Settings” on page 69.



Click **Next**.

- 20 Once the Real User Monitor engine has been installed, click **Finish** to exit the wizard.

After successfully installing the Real User Monitor engine and connecting the engine to the MySQL database, you launch Real User Monitor on the machine on which it is installed.

You start Real User Monitor by selecting **Start > Programs > Mercury Real User Monitor > Administration > Enable Mercury Real User Monitor**.

You can stop Real User Monitor by selecting **Start > Programs > Mercury Real User Monitor > Administration > Disable Mercury Real User Monitor**.

For additional information on starting and stopping Real User Monitor, see “Administering Real User Monitor” on page 50.

4

Installing the Real User Monitor Probe

After installing the Mercury Real User Monitor engine, you must install at least one Real User Monitor probe. You then set up the probe to collect real-user data and report this data to the engine.

This chapter describes:	On page:
Physically Connecting the Probe	35
Installing the Probe	37
Stopping and Starting the Probe	39

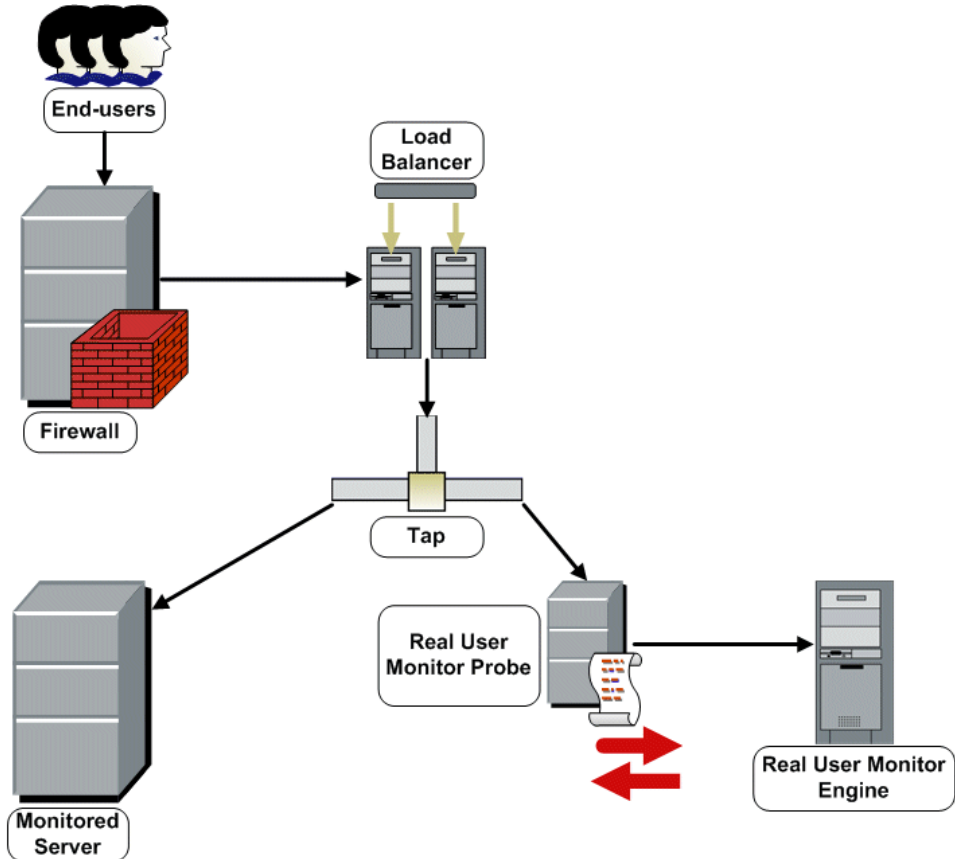
Physically Connecting the Probe

This section describes how to physically connect the Real User Monitor probe to the network.

The Real User Monitor probe runs on a Linux machine and uses two network interfaces; one assigned to sniffing and the other assigned to management (which the Real User Monitor engine uses to connect to the probe machine). The interface used for sniffing should not have an IP address assigned to it. For details on the system requirements for the Real User Monitor probe, see “Real User Monitor Probe Requirements” on page 19.

Chapter 4 • Installing the Real User Monitor Probe

Via taps or port spanning, the sniffer interface listens to the traffic on the servers you are monitoring.



Note:

- ▶ If using a load balancer, it is recommended to place the network tap behind the load balancer
 - ▶ Load balancers should be configured to use the **x-forward-for** header to preserve end-user IP addresses for use by Real User Monitor.
 - ▶ For small installations with a low amount of network traffic, instead of using a network tap, an Ethernet port of the Real User Monitor probe can be connected to a switch that is configured for port mirroring for the monitored server.
-

Installing the Probe

This section describes how to install the probe on a Linux machine.

The Real User Monitor probe is installed on a machine running the Linux operating system. For details on the system requirements for the Real User Monitor probe, see “Real User Monitor Probe Requirements” on page 19.

You download the Real User Monitor probe installation file from the **Downloads** page, which you access from **Admin > Platform > Setup and Maintenance**.

Note: The Real User Monitor probe installation must be carried out as the root user.

To install the Real User Monitor probe:

- 1** Click **Mercury Real User Monitor probe** on the Downloads page to download the **MercuryRUMProbeSetup_linux.bin** file to the **/var/tmp** directory on the machine on which you want to install the probe. Note that if you cannot download this file directly to the Linux machine on which you are installing the probe, make sure that you download the file to a machine from which you can later FTP (in binary mode) the file to the Linux machine.

Note: For the Real User Monitor probe setup file to be available on the Downloads page, it must first be installed to Mercury Business Availability Center. For details on installing Mercury Business Availability Center components setup files, see “Installing Components Setup Files to the Mercury Business Availability Center Downloads Page” in *Deploying Servers*.

If you prefer, you can copy the Real User Monitor probe setup program directly from the Mercury Business Availability Center 6.5 Components – Linux CD-ROM, for versions delivered on CD-ROM.

- 2** Run the installation script with the following commands:
 - **cd /var/tmp**
 - **MercuryRUMProbeSetup_linux.bin**
- 3** Change the sshd daemon to work with xinetd by running the script **/etc/beatbox/configure_ssh.sh**.
- 4** It is recommended to set the network configuration automatically by running the script **/usr/bin/bb_netconfig.pl**.
- 5** Start the Real User Monitor probe with the command **/etc/init.d/beatbox-capture start**.

- 6 Verify that the Real User Monitor probe has successfully started with the command `/etc/init.d/beatbox-capture status`. The following is displayed:

```
[root@beatboxrnd rum-pages]
# /etc/init.d/beatbox-capture status
BeatBox is responding properly.
[root@beatboxrnd rum-pages]#
```

Stopping and Starting the Probe

Once installed on the Linux machine, the Real User Monitor probe will be started automatically each time the Linux machine is started. You can also manually start and stop the Real User Monitor probe.

To start the Real User Monitor probe manually:

- 1 Log in to the Real User Monitor probe machine as the root user.
- 2 Start the Real User Monitor probe with the command `/etc/init.d/beatbox-capture start`.

To stop the Real User Monitor probe manually:

- 1 Log in to the Real User Monitor probe machine as the root user.
- 2 Stop the Real User Monitor probe with the command `/etc/init.d/beatbox-capture stop`.

5

Uninstalling Real User Monitor

If you no longer want to use Real User Monitor, you can uninstall the engine.

Note: To uninstall the probe, you need only disconnect it from the network, or shut down the probe machine.

This chapter describes:	On page:
Uninstalling Mercury Real User Monitor on a Windows Platform	41

Uninstalling Mercury Real User Monitor on a Windows Platform

To uninstall the Real User Monitor engine:

- 1 If Mercury Real User Monitor is running, stop it by disabling it from the start menu (**Start > Programs > Mercury Real User Monitor > Administration > Disable Mercury Real User Monitor**).

- 2** On the machine from which you are uninstalling Mercury Real User Monitor:
 - a** Select **Start > Settings > Control Panel**.
 - b** Select **Add/Remove Programs**.
 - c** Select **Mercury Real User Monitor**.
 - d** Click **Change/Remove**.
 - e** Click **Next**.
- 3** When the Setup Welcome screen is displayed, click **Next**.
- 4** Read the summary information. If it is correct, click **Next** to continue with the uninstallation. If it is not correct, click **Back** to correct the information you previously provided.
- 5** Choose if you want the uninstall process to delete unused files. Click **Next**.
- 6** Choose whether you want the uninstall process to reboot the machine for you automatically when the uninstall process is complete, or to restart it yourself manually at a later time. Click **Next**.
- 7** Once the Real User Monitor engine has been uninstalled, click **Finish** to exit the uninstall process.

Note: If you delete the MySQL database only, the Real User Monitor engine will not work without the MySQL database.

Part III

Configuring and Administering Real User Monitor

6

Configuring the Real User Monitor Probe

You can configure the Real User Monitor probe by changing the default settings and adding additional configuration settings.

This chapter describes:	On page:
Using SSL to Access the Real User Monitor Probe Console	46
Limiting WebConsole Resources	46

Using SSL to Access the Real User Monitor Probe Console

You can configure the Real User Monitor probe machine to require SSL communications to log in to the Real User Monitor probe console. To configure SSL for the Real User Monitor probe console, you carry out the following steps:

- 1 In the `<Real User Monitor home directory>\conf\probes\probe.default.properties` file on the Real User Monitor engine, in the **RUM Engine Probe HTTP Connection Parameters** section, change the `connection.http.ssl` parameter to true. For example:

```
# RUM Engine Probe HTTP Connection Parameters #  
#####  
connection.http.port=2020  
connection.http.ssl=true
```

In the `<Real User Monitor home directory>\conf\configurationmanager\Beatbox_Default_Const_Configuration.xml` file on the Real User Monitor engine, under the `[collector]` section, add a section called `[webconsole]` with the line `use_ssl true`. For example:

```
[collector]  
device      eth0  
servers     0.0.0.0/0.0.0.0 80  
[webconsole]  
use_ssl true
```

Limiting WebConsole Resources

For security reasons, the WebConsole resources of the Real User Monitor probe are limited by default, so that only configuration updates and general statistics are available. You can remove this limitation for troubleshooting so that all resources are available.

Note: It is recommended to reset the limitation after you have finished troubleshooting.

To change the availability of WebConsole resources:

- 1** Edit the `/etc/beatbox/bbsecurity.conf` file on the probe machine.
- 2** In the `webconsole` section of the file, change the setting of the `restrict_webconsole` parameter to `true` (to impose the limitation) or `false` (to remove the limitation).
- 3** Save the file.
- 4** Restart the Real User Monitor probe.

7

Configuring and Administering the Real User Monitor Engine

You configure and administer the Real User Monitor engine via the Web and JMX consoles, which allow you to configure the engine, monitor system health, and use a number of diagnostic tools.

This chapter describes:	On page:
Administering Real User Monitor	50
Using the Real User Monitor Web Console	52
Using the Real User Monitor JMX Console	100
URL Correlation Parameters	105
Configuring Meaningful Page Names	109
Unifying Frames	137

Administering Real User Monitor

You administer Real User Monitor by using the start menu and task bar icon that are installed during a Windows installation of Real User Monitor.

Real User Monitor Windows Start Menu

To access the Real User Monitor Start menu that is added to the Windows machine on which the Real User Monitor engine is installed, select **Start > Programs > Mercury Real User Monitor**. The menu includes the following options:

Administration

The Administration menu option includes the following options:

Option	Description
RUM Configuration Tool	Runs the Mercury Real User Monitor Configuration Tool, which enables you to create a MySQL database schema, and to connect Real User Monitor to a MySQL database. For details, see “Creating and Connecting to the MySQL Database” on page 142.
Database (only if the MySQL database has been installed)	Opens a submenu with options for starting and stopping the MySQL database on the machine on which it is installed.
Disable Mercury Real User Monitor	Stops Real User Monitor on the specific machine, and disables it from being run automatically whenever the machine is started.
Enable Mercury Real User Monitor	Starts Real User Monitor on the specific machine, and sets it to run automatically whenever the machine is started.

Open Real User Monitor Web Console

Selecting this option opens the Real User Monitor Web console used for administering Real User Monitor. For details, see “Using the Real User Monitor Web Console” on page 52.

Real User Monitor Windows Task Bar Icon



The task bar icon installed with Mercury Real User Monitor provides a menu with options for the Mercury Real User Monitor Agent service. The Mercury Real User Monitor Agent service is responsible for launching Mercury Real User Monitor and managing the processes used by it. The supervisor process manages and monitors the other processes used by Mercury Real User Monitor.

When Mercury Real User Monitor is first enabled, the icon appears with two yellow stars only. When the Mercury Real User Monitor application server has successfully started, the stars change to grey and a green tick appears above them. If there is an error during startup, or an error with JBoss after startup, the green tick in the above icon changes to a red X until the problem is rectified.



The menu, which you access by right-clicking the icon, includes the following options:

Option	Description
About	Displays informational data about the Mercury Real User Monitor Agent service.
View Log	Displays the supervisor log, which includes information about the various processes being used by Mercury Real User Monitor.
Settings	Displays the processes in use by Mercury Real User Monitor, and their current settings.
Close	Stops Mercury Real User Monitor and closes the Mercury Real User Monitor Agent service.

Note:

Changing any of the process settings can cause Mercury Real User Monitor to malfunction and should not be done without consulting Mercury Customer Support.

Do not use **Close** to stop Mercury Real User Monitor. Stop Mercury Real User Monitor by using the **Disable Mercury Real User Monitor** option from the **Administration** menu in the Mercury Real User Monitor Start menu only.

Using the Real User Monitor Web Console

Once the Real User Monitor engine has been installed and started, you can use the Real User Monitor Engine Web console to view and configure the connection between Real User Monitor and Mercury Business Availability Center, view other Real User Monitor engine settings, monitor the health of Real User Monitor components, and use Real User Monitor diagnostic tools.

This section includes the following topics:

- ▶ “Accessing the Real User Monitor Engine Web Console” on page 52
- ▶ “Monitoring the Health of Real User Monitor Components” on page 55
- ▶ “Real User Monitor Configuration and Settings” on page 68
- ▶ “Real User Monitor Diagnostic Tools” on page 77

Accessing the Real User Monitor Engine Web Console

You use the Real User Monitor Engine Web console to monitor the health of Real User Monitor components. You can also use a number of configuration tools to configure the Real User Monitor engine, as well as view and configure the connection parameters between Real User Monitor and Mercury Business Availability Center. In addition, the Real User Monitor Web console includes diagnostic tools that you can use in resolving Real User Monitor problems.

Once you start the Real User Monitor engine after installation, you can access the Real User Monitor Engine Web console by launching a web browser and entering the following URL:

http://<Real User Monitor engine machine name or IP>:8180

Note: On a Windows machine on which the Real User Monitor engine is installed, you can also access the Real User Monitor Engine Web console by selecting **Start > Programs > Mercury Real User Monitor > Open Real User Monitor Web Console**.

Logging In

When you access the Real User Monitor Engine Web console, the login page opens.

Enter the login parameters (login name and password) of a user defined in Real User Monitor, and click **Log In**. After logging in, the user name appears at the top right, under the top menu bar.

Initial access can be gained using the default superuser login parameters: Login Name=**admin**, Password=**admin**. It is recommended that the system superuser change this password immediately to prevent unauthorized entry. For details on changing the password, see “Changing Login Parameters” on page 54.

The Real User Monitor Engine Web console opens, displaying the top menu bar that enables navigation to the configuration, health, tools, and help pages, as well as the Logout button.

Logging Out

When you have completed your session, it is recommended that you log out of the Web site to prevent unauthorized entry, by clicking **Logout** at the top of the page.

Note: You are automatically logged out of the Real User Monitor Web console after twenty minutes of inactivity.

Changing Login Parameters

You can add, change, and delete Real User Monitor users by editing the **MercuryRUM\conf\rumwebconsole\users.xml** file. In this file, there is a line for each user in the following format:

```
<user name="Administrator" login="admin" password="admin"  
"encryptedPassword=""/> />
```

Note: It is recommended that the system superuser limit access to the **MercuryRUM\conf\rumwebconsole\users.xml** file.

To add a Real User Monitor user:

- 1 Open the **MercuryRUM\conf\rumwebconsole\users.xml** file in a text editor.
- 2 Duplicate the entry for one of the existing users.
- 3 In the duplicate line, enter the **user name**, **login**, and **password** parameters for the new user. Ensure that the **encryptedPassword** parameter is blank.
- 4 Save the file.

To change a Real User Monitor user:

- 1 Open the **MercuryRUM\conf\rumwebconsole\users.xml** file in a text editor.
- 2 In the appropriate line, change the **user name** and **login** parameters as required.
- 3 To change a user's password, enter the new password in the **password** parameter and ensure that the **encryptedPassword** parameter is blank.
- 4 Save the file.

To delete a Real User Monitor user:

- 1** Open the **MercuryRUM\conf\rumwebconsole\users.xml** file in a text editor.
- 2** Delete the appropriate line.
- 3** Save the file.

Note:

- ▶ When deleting users, ensure that there is at least one user configured in the users file, or you will be unable to access the Real User Monitor Web console.
 - ▶ Changes to the **MercuryRUM\conf\rumwebconsole\users.xml** file only take effect when the Real User Monitor engine is restarted. When the Real User Monitor engine is started, user passwords in the **password** parameter are encrypted and removed, and the encrypted passwords are stored in the **encryptedPassword** parameter.
-

Monitoring the Health of Real User Monitor Components

The **Health** dropdown menu on the Real User Monitor Engine Web console menu bar includes the **System Status** option, which you click to display the status of the main Real User Monitor components.

You can refresh the data displayed on the System Health page by clicking the Refresh button at the top, right hand side of the page.



For each component displayed, there are four possible statuses:

- ▶ Green – OK
- ▶ Yellow – Minor
- ▶ Red – Critical
- ▶ Grey – No status

You can drill down to see the status of the entities that comprise the Real User Monitor component by clicking the component name.

For each entity displayed, apart from the columns included in the tables below, there is a column called **Value (Value Since Startup)**. If an entity is configured to display a value, it will be displayed in this column either as an absolute value (for example, the number of pages handled), or as a ratio showing a value for a given time period (for example, the number of session events per second). An additional absolute value may be displayed in brackets, which is the accumulated value of the entity since the Real User Monitor engine was last started.

Note: Entities using ratios will have no status until the system health page has been automatically updated twice by the Real User Monitor engine. This can take several moments (by default, up to six minutes).

The following table lists the components and their entities and describes the meaning of the different statuses:

Component	Entity	Description	OK Status (Green)	Minor Status (Yellow)	Critical Status (Red)
Configuration Retrieval from BAC server	Connection to BAC server	Status of the connection to Mercury Business Availability Center for retrieving the Real User Monitor engine and probe configurations	Connection to BAC server is operational	N/A	Connection to BAC server is not operational
	Data type <type name> retrieval	Status of the last attempt to retrieve data type <type name> configuration from the Mercury Business Availability Center server	Configuration of data type <type name> successfully retrieved from BAC server	N/A	Errors while trying to retrieve configuration data type <type name> from BAC server

Component	Entity	Description	OK Status (Green)	Minor Status (Yellow)	Critical Status (Red)
Database	Database connectivity	Status of the connectivity between the Real User Monitor engine and the MySQL database	Connection to database OK	N/A	Connection to database not working
	Database daily purging time	The length of time taken to perform the daily purge of the database	Purging time is normal	Purging time is slow	N/A
Database	Database response time	Status of the response time between the Real User Monitor engine and the MySQL database	Database response time is normal	Database response time is below normal	Database response time is slow
	Database session purging time	The length of time taken to purge old sessions from the database	Purging time is normal	Purging time is slow	N/A

Component	Entity	Description	OK Status (Green)	Minor Status (Yellow)	Critical Status (Red)
Real User Monitor Probe	Channel “missing components” status	Status of the last attempt to connect to the channel	BeatBox Retriever has successfully connected to this channel	BeatBox Retriever experienced problems while connecting to this channel	BeatBox Retriever has failed to connect to this channel more than three consecutive times
	Channel “pages” data flow	Status of retrieving page data from the Real User Monitor Probe	Data from the probe successfully retrieved	Probe has not produced new data for some time	N/A
	Channel “pages” status	Status of the last attempt to connect to the channel	BeatBox Retriever has successfully connected to this channel	BeatBox Retriever experienced problems while connecting to this channel	BeatBox Retriever has failed to connect to this channel more than three consecutive times

Component	Entity	Description	OK Status (Green)	Minor Status (Yellow)	Critical Status (Red)
Real User Monitor Probe	Channel "sessions" data flow	Status of retrieving session data from the Real User Monitor Probe	Data from the probe successfully retrieved	Probe has not produced new data for some time	N/A
	Channel "sessions" status	Status of the last attempt to connect to the channel	BeatBox Retriever has successfully connected to this channel	BeatBox Retriever experienced problems while connecting to this channel	BeatBox Retriever has failed to connect to this channel more than three consecutive times
	Configuration to Probe	Status of the last attempt to send the configuration to the Real User Monitor Probe	Probe was configured successfully	N/A	Errors during probe configuration process
	Probe Active Sessions	The number of sessions currently monitored by the Real User Monitor Probe	The number of active sessions is below the internal permitted number	The number of active sessions is close to the internal permitted number	The number of active sessions has exceeded the internal permitted number

Component	Entity	Description	OK Status (Green)	Minor Status (Yellow)	Critical Status (Red)
Real User Monitor Probe	Probe and RUM Time Difference	Displays the status of the time synchronization between the Real User Monitor Engine and Probe	The Real User Monitor Engine and Probe are in sync	The Real User Monitor Engine and Probe are slightly out of sync	The Real User Monitor Engine and Probe are grossly out of sync
	Probe Box Total Memory	The total amount of physical system memory, in kilobytes	Always	N/A	N/A
	Probe Disk Utilization	The Real User Monitor Probe disk utilization on a specific partition	Free disk space is sufficient	Free disk space is nearing its limit	Free disk space is insufficient
	Probe HTTP Bytes Received	The total number of HTTP bytes received by the Web servers from clients	The current load of HTTP received traffic is normal	N/A	The current load of HTTP received traffic is too high for a single Real User Monitor Probe
	Probe HTTP Bytes Sent	The total number of HTTP bytes sent by the Web servers to clients	The current load of HTTP sent traffic is normal	N/A	The current load of HTTP sent traffic is too high for a single Real User Monitor Probe

Component	Entity	Description	OK Status (Green)	Minor Status (Yellow)	Critical Status (Red)
Real User Monitor Probe	Probe HTTP Packets	The total number of HTTP packets processed by the Real User Monitor Probe	The HTTP packet rate is normal	N/A	The HTTP packet rate is too high for a single Real User Monitor Probe
	Probe HTTPS Bytes Received	The total number of HTTPS bytes received by the Web servers from clients	The current load of HTTPS received traffic is normal	N/A	The current load of HTTPS received traffic is too high for a single Real User Monitor Probe
	Probe HTTPS Bytes Sent	The total number of HTTPS bytes sent by the Web servers to clients	The current load of HTTPS sent traffic is normal	N/A	The current load of HTTPS sent traffic is too high for a single Real User Monitor Probe
	Probe HTTPS Packets	The total number of HTTPS packets processed by the Real User Monitor Probe	The HTTPS packet rate is normal	N/A	The HTTPS packet rate is too high for a single Real User Monitor Probe
	Probe Packet Queue Work	The current number of packets that have been collected from the network devices, but have not yet been processed	The packet rate is normal	The packet rate is nearing the limit for normal processing	The packet rate is too high

Component	Entity	Description	OK Status (Green)	Minor Status (Yellow)	Critical Status (Red)
Real User Monitor Probe	Probe Packets Lost	The total number of packets that the Real User Monitor Probe has recognized as missing	The network is stable and packets are being processed normally	Possible network problems which could lead to data loss	The network is bad and the Real User Monitor Probe may lose some data
	Probe Pages Cached	The number of page views currently being cached to the Real User Monitor Probe's memory	The page rate is stable	The page rate is nearing the limit for normal caching	The page rate is too high
	Probe Process CPU Utilization	The current percentage of probe utilization of the Beatbox process	Probe utilization is normal	Probe utilization is nearing the limit for a single Real User Monitor Probe	N/A
	Probe Process Memory	The total amount of non-swapped, physical memory used by the Real User Monitor Probe, in kilobytes	Always	N/A	N/A

Component	Entity	Description	OK Status (Green)	Minor Status (Yellow)	Critical Status (Red)
Real User Monitor Probe	Probe Process Memory Utilization	The total amount of non-swapped physical memory used by the Beatbox process, out of the total amount of physical system memory, in kilobytes	Memory utilization is normal	Memory utilization is high	Memory utilization is nearing the maximum permissible value
	Probe Rec Bytes Per Network Device	The total number of bytes received per specific NIC, in bits per second	Network device load is normal	Network device load is nearing the probe's limit	N/A
RUM Engine	Application Session Count	The total number of open application sessions	Always	N/A	N/A
	BBRetriever Total Pages Handled	The number of pages being handled by the BBRetriever in the Real User Monitor engine	The number of pages being handled is normal	The number of pages being handled is above average	The number of pages being handled is high

Component	Entity	Description	OK Status (Green)	Minor Status (Yellow)	Critical Status (Red)
RUM Engine	Free Memory	The free memory available for the Real User Monitor engine	The free memory is sufficient for the Real User Monitor engine to run under the current load	The free memory is nearing the limit for the Real User Monitor engine to run under the current load	The free memory is not sufficient for the Real User Monitor engine to run under the current load
	JMS Entry	Status of the last attempt to read data from JMS	Real User Monitor is successfully reading data	Real User Monitor may not be successfully reading data	Real User Monitor fails to read data
	JMS Publisher				
	JMS Raw Entry				
	JMS Samples				
	Login Maps Size per Name	The total number of login names mapped to sessions	Always	N/A	N/A
	Login Maps Size per Session	The total number of sessions mapped to login names	ALways	N/A	N/A
Publish configuration to module <module name> on host <IP address>	Status of the last attempt to publish the configuration to the Real User Monitor engine internal modules	Config-uration to module <module name> on host <IP address> successfully published	N/A	Error while trying to publish configuration to module <module name> on host <IP address>	

Component	Entity	Description	OK Status (Green)	Minor Status (Yellow)	Critical Status (Red)
RUM Engine	Publisher Samples Thrown	The total number of samples thrown	Always	N/A	N/A
	Snapshot Jobs Alive Count	The total number of open snapshot jobs waiting to be processed	Real User Monitor can process all the open snapshots	The number of open snapshots waiting to be processed is nearing the limit for Real User Monitor under the current load	Real User Monitor may not be able to process all the snapshots
	Snapshot Jobs Submit Denial	The total number of submit requests for snapshot failures	Always	N/A	N/A
	Snapshot Relevant Events	The total number of events that should trigger snapshot creation	Always	N/A	N/A

Component	Entity	Description	OK Status (Green)	Minor Status (Yellow)	Critical Status (Red)
RUM Engine	Snapshot Sessions Map Size	The total number of open sessions for which at least one snapshot was created	The number of current sessions is normal	The number of current sessions is nearing the permissible limit	The number of current sessions has exceeded the permissible limit
	Statistics Total Aggregation Size	The number of aggregation buckets in memory	The number of aggregation buckets is normal	The number of aggregation buckets is nearing the permissible limit	The number of aggregation buckets has exceeded the permissible limit
	Statistics Total Messages Ignored	The number of entities filtered out by the statistics manager	Always	N/A	N/A
	Total DNS Entries Resolved	The total number of processed DNS unique entries	Always	N/A	N/A

Component	Entity	Description	OK Status (Green)	Minor Status (Yellow)	Critical Status (Red)
Samples to BAC server	Connection to BAC server	Status of the connection between the Real User Monitor engine and Mercury Business Availability Center for publishing samples	Real User Monitor is successfully sending samples to Mercury Business Availability Center	N/A	Real User Monitor has failed in sending data to Mercury Business Availability Center
	Publisher burst state	Indication if any samples were delayed during the last attempt to publish data to Mercury Business Availability Center	All Real User Monitor samples are being sent to Mercury Business Availability Center. No samples are delayed	N/A	Real User Monitor is delaying samples so as not to overload Mercury Business Availability Center

Real User Monitor Configuration and Settings

The **Configuration** dropdown menu on the Real User Monitor Engine Web console menu bar includes the following options:

- ▶ **BAC Connection Settings** on page 69. Used to view and configure the connection parameters between the Real User Monitor and Mercury Business Availability Center.
- ▶ **Probe Management** on page 71. Used to configure communication settings with the Real User Monitor probe.
- ▶ **Set Engine IP** on page 77. Used to set the IP address of the Mercury Real User Monitor engine machine.

- **Advanced Settings** on page 77. Provides links to specific areas of the Real User Monitor JMX console for configuring parameters and settings for individual Real User Monitor modules.

BAC Connection Settings

This page displays the current configuration settings for the communication channel between Real User Monitor and Mercury Business Availability Center, which you can update. The page contains the following panes:

General

This pane includes a field that contains the hostname of the Mercury Business Availability Center Core Server, a field for the port number used in communicating with the Core Server (80 by default), and a field for the communication protocol used (HTTP by default, or HTTPS if SSL is used for communicating with the Core Server).

Note: If you are a Mercury Managed Services user, contact a Mercury Customer Support representative to receive the hostname or URL to enter.

Authentication

To instruct Real User Monitor to use basic authentication in communicating with Mercury Business Availability Center, select the **Use authentication** check box. Enter the user name, password, and domain name of a user recognized by the Core Server in the relevant fields.

For more information on using basic authentication in Mercury Business Availability Center, see “Using Basic Authentication in Mercury Business Availability Center” in *Hardening the Platform*.

Proxy

To instruct Real User Monitor to access the Core Server through a reverse proxy server, select the **Use proxy** check box. Enter the user name, password, domain name, and URL for the reverse proxy server. For information on using a reverse proxy server with Mercury Business Availability Center, see “Using a Reverse Proxy in Mercury Business Availability Center” in *Hardening the Platform*.

SSL

If Real User Monitor has been configured to use the SSL channel in communicating with the Core Server, you configure the following parameters in this pane:

- ▶ **Keystore path.** The path to the Keystore file, which is a file on the Real User Monitor engine machine that contains the private key and client-side certificate used for client authentication in SSL
- ▶ **Private Key password.** The password used for accessing the Private Key file
- ▶ **Keystore password.** The password used for accessing the Keystore file

In addition, you can select the following options by checking the box to the left of the required option:

- ▶ Validate host names on server certificates
- ▶ Validate that the server certificates are trusted
- ▶ Validate that the server certificates are not expired

For information on configuring the Real User Monitor and Mercury Business Availability Center to work with SSL, see “Using SSL in Mercury Business Availability Center” in *Hardening the Platform*.

Note: If you change the configuration, click the **Save Configuration** button to save the configuration and update the Real User Monitor engine.

Probe Management

The Probe Management page displays a list of the Real User Monitor probes that are connected to the engine, and also allows you to set probe configuration parameters for the following:

- “SSL Keystore Management” on page 72
- “Interface Configurations” on page 73
- “Data Collection Settings” on page 74
- “SSH Console” on page 76

When the Probe Management page is accessed, the following information is displayed for each probe:

- **Probe Name.** The name of the Real User Monitor probe as configured in Monitor Administration. For information on configuring the probe in Monitor Administration, see “Configuring Real User Monitor Engine Settings” in *End User Management Data Collector Configuration*.
- **Probe IP.** The IP address of the Real User Monitor probe as configured in Monitor Administration.
- **Enabled.** This value denotes whether the probe is enabled in Monitor Administration or not.
- **Configurable.** This value denotes whether the Real User Monitor engine can internally configure the Real User Monitor probe. If the probe is not configurable, the engine will not attempt to retrieve the probe’s version and the Probe Version field will be empty.
- **Probe Version.** The version of the Real User Monitor probe that is installed.

You can refresh the data displayed on the Probe Versions page by clicking the Refresh button at the bottom of the page.



Note: If the Real User Monitor probe is either disabled or not configurable, the SSL Keystore Management, Interface Configurations, and Collector Editor pages are disabled.

SSL Keystore Management



You use the SSL Keystore Management page to manage the keys used by Real User Monitor probes to monitor SSL encrypted traffic. To access the SSL Keystore Management page, click the SSL Keystore Management button on the Probe Management page. The Keystore Management page contains two panes – SSL Keystore Administration and SSL Statistics.

The SSL Keystore Administration pane displays a list of all the servers that had traffic which the Real User Monitor probe could not decrypt using any of the given keys. For each server, the percentage of traffic that was not decrypted from the server's total SSL traffic is displayed.

To add a key:

- 1** Click **Add Key**. The Keystore Management page opens.
- 2** In the Keystore Management page, enter the following:
 - ▶ **Key Name**. The name you want to give to the key.
 - ▶ **Key File**. The path and name of the file containing the key. You can click **Browse** to navigate to the relevant file.
 - ▶ **Key Format**. The format of the key – either PEM or PKCS12.
 - ▶ **Key Password**. An optional password for the key.
 - ▶ **New Password**. An optional password for the key if you want to change the existing one, or add a new one.
 - ▶ **Validate New Password**. Validation of the new password by entering it again.
- 3** Click **Submit** to save the key and exit, or **Cancel** to exit without saving.

Note: If no new password is entered, the existing one is used to encrypt the key. If there is no existing password for the key, a new one must be entered.

To delete a key:

- 1 Select the checkbox to the left of the keys you want to delete.
- 2 Click the Delete button at the bottom of the pane, or at the end of the row of the selected key.



Note: You can select all, clear all, or invert your selection using the Select buttons.



The SSL Statistics pane displays the amount of encrypted traffic as a percentage of the entire traffic monitored from each server. To refresh the information in this pane, click the refresh button.

**Interface Configurations**

You use the Interfaces Configuration page to list and select a probe's Ethernet devices used to monitor server traffic. To access the Interfaces Configuration page, click the Interfaces Configuration button on the Probe Management page. For each Ethernet device, the following information is displayed:



- ▶ **Sniff.** Checkbox to select the device to monitor server traffic.
- ▶ **Name.** The logical name of the Ethernet device.
- ▶ **Up.** Whether the device is running or not.
- ▶ **Sniffable.** Whether the device can be used to listen to Ethernet traffic.
- ▶ **Hardware.** The hardware details of the device.
- ▶ **Driver.** The name of the driver used for the device.
- ▶ **IP.** The IP address assigned to the device, if any.

Click **Interface Details** for a device to display link, driver, other settings, and statistics information.

To select a device to be used by the probe for monitoring server traffic, use one of the following options:

- ▶ Select the **Sniff** checkbox to the left of the device you want to use.
- ▶ Select the **Probe Auto Select** checkbox to configure the Real User Monitor probe to listen to all available devices automatically.

Note: This differs from selecting all the devices manually, as the Real User Monitor probe will only listen to available devices and not to all devices.

- ▶ Click **Restore to Current** to select the devices currently configured for monitoring.
- ▶ Click **Recommended Selection** to have the Real User Monitor engine select the devices it considers to be the most suitable to use.

When you have made your selection, click **Save and Upload Configuration** to save the configuration and send it to the Real User Monitor probe.

Note: You can select all, clear all, or invert your selection using the **Select** buttons.



Data Collection Settings

The Real User Monitor probe filters the traffic that it monitors. By default, the filter is set to monitor all traffic from port 80. You can override the default filter by setting filters for specific IP addresses or ranges, and for specific ports.



You use the Data Collection Settings page to list and configure the filters to be used for monitoring server traffic. To access the Data Collection Settings page, click the Data Collection Settings button on the Probe Management page. For each server range, the following information is displayed:

- ▶ **Servers.** The range or mask of servers to be monitored.
- ▶ **Ports.** The ports of the servers included in the range to be monitored.
- ▶ **Traffic Type.** The type of traffic to be monitored – HTTP or HTTPS.
- ▶ **Clients.** By default, a filter applies for all clients accessing the servers.

To display the current data collection filters, click **Reload Current Configuration** at the bottom of the page.

You can add new filters, and delete or edit existing filters. After adding, deleting, or changing a filter, click **Save and Upload Configuration** to save the configuration and send it to the Real User Monitor probe.

To add a new filter:

- 1 Click **New Definition**. The Edit Data Collection Settings page opens.
- 2 In the Edit Data Collection Settings page, enter the following:
 - ▶ **Traffic Type.** Select the type of traffic to be monitored – HTTP or HTTPS.
 - ▶ **Servers.** Select the type of server filter you are adding and enter the required data:
 - ▶ **Single IP.** Enter a single IP address.
 - ▶ **IP Range.** Enter the starting and ending IP addresses of the range.
 - ▶ **IP Mask.** Enter the network address and applicable IP mask.
 - ▶ **Ports.** Select the type of port filter you are adding and enter the required data:
 - ▶ **Single Port.** Enter a single port number.
 - ▶ **Port Range.** Enter the starting and ending port numbers of the range.
- 3 Click **Submit** to save the filter and exit, or **Cancel** to exit without saving.

To delete a filter:



Click the Delete button in the row of the filter you want to delete.

To edit a filter:



- 1 Click the Edit button in the row of the filter you want to edit. The Edit Data Collection Settings page opens.
- 2 In the Edit Data Collection Settings page, edit the information displayed. See “To add a new filter” on page 75 for an explanation of the filter’s fields.
- 3 Click **Save** to save the filter and exit, or **Cancel** to exit without saving.

SSH Console



You use SSH Console to connect to the Real User Monitor probe’s console using Secure Shell, which provides strong authentication and secure communications over insecure channels. To access SSH Console, click the SSH Console button on the Probe Management page.

The first time you access SSH Console, a wizard installs some required files on your machine. Accept the default settings, or change them as required. Each time you access SSH Console, accept the certificate displayed, and in the console window, enter the user and password for the Real User Monitor probe, as configured in Monitor Administration. You are now connected to the Real User Monitor probe’s console. (For information on configuring the probe in Monitor Administration, see “Configuring Real User Monitor Engine Settings” in *End User Management Data Collector Configuration*.)

In the Real User Monitor probe console, you use regular Linux commands on the command line. There is also a menu providing assorted utilities for working in SSH Console. To access the menu, right-click the mouse while holding down the CTRL key. One of the utilities is a convenient graphical user interface for SFTP, which you use to transfer files to and from the Real User Monitor probe machine via secured FTP. To access the SFTP tool from the menu, select **Plugins > SFTP File Transfer**.

Set Engine IP

The first time that the Real User Monitor engine is started, it saves the IP address of the machine on which it is running. This option allows you to change the stored IP address in the event that the machine's actual IP address has changed (for example, if it connected to a different network and was allocated a different IP address). The stored IP address is displayed, followed by a list of all the current IP addresses of the network cards installed in the Real User Monitor engine machine. You can select one of the IP addresses from the list, or enter a different address of your choice in the **Other** field. Click **Submit** to accept the change.

Advanced Settings

This option displays Real User Monitor modules and provides direct links to specific pages in the Real User Monitor JMX console for viewing and configuring the module settings. Each module listed can have any of the following links associated with it:

- ▶ **Main Module Page.** Links to general settings for the module name and status
- ▶ **Configuration Page.** Links to settings for the configuration of the Real User Monitor module retrieved from Mercury Business Availability Center
- ▶ **Settings Page.** Links to settings for the configuration of the Real User Monitor module in the Real User Monitor engine

For details on working with the JMX console, see “Using the Real User Monitor JMX Console” on page 100.

Real User Monitor Diagnostic Tools

The **Tools** dropdown menu on the Real User Monitor Engine Web console menu bar includes the following tools:

- ▶ **Auto Discovery** on page 78. Used to enable the Real User Monitor probe to automatically discover the servers and domains being accessed by the traffic to which it is listening.

- ▶ **Session ID Detection** on page 82. Used to automatically discover application session IDs in monitored traffic. Helps to configure applications in Monitor Administration. (For information on configuring applications in Monitor Administration, see “Configuring Applications” in *End User Management Data Collector Configuration*.)
- ▶ **Monitoring Configuration Information** on page 86. Displays general configuration data of the applications, end-users, pages, probes, transactions, and engine that have been configured for monitoring by Real User Monitor in Monitor Administration.
- ▶ **Capture Log Files** on page 93. Used to create a zip file of the Real User Monitor resource and log files for use by Mercury Customer Support.
- ▶ **JMX Console** on page 94. Provides a link to the Real User Monitor JMX console for configuring parameters for URL correlation in Monitor Administration. (For details on URL correlation, see “Correlating Collected Data with Configured Pages” in *End User Management Data Collector Configuration*).
- ▶ **IP Translator** on page 94. Used to convert the internal number used by the engine to represent an IP address, to the actual IP address it represents, and vice versa.
- ▶ **Time Converter** on page 94. Used to convert a date and time to an internal number used by the engine machine to represent this value. You can also convert the number used by the engine machine to the date and time it represents.
- ▶ **Current Sessions Report** on page 95. Displays the Open Sessions report that can be used by advanced users to study open session raw data.

Auto Discovery

You use the Auto Discovery tool to instruct the Real User Monitor probe to automatically detect and report the domains and servers that are accessed by the traffic to which it is listening. You can use the information obtained from the Auto Discovery tool to help you configure servers and applications to be monitored by Real User Monitor, in Monitor Administration. For information on configuring Real User Monitor in Monitor Administration, see “Configuring the Real User Monitor” in *End User Management Data Collector Configuration*.

When the Auto Discovery option is selected from the Tools menu, the Auto Discovery page opens. On the Auto Discovery page, the following information is displayed for each Real User Monitor probe that is connected to the Real User Monitor engine:

- ▶ **Probe Name.** The name of the Real User Monitor probe as configured in Monitor Administration. For information on configuring the probe in Monitor Administration, see “Configuring Real User Monitor Engine Settings” in *End User Management Data Collector Configuration*.
- ▶ **Probe IP.** The IP address of the Real User Monitor probe as configured in Monitor Administration.
- ▶ **Enabled.** This value denotes whether the probe is enabled in Monitor Administration or not.
- ▶ **Configurable.** This value denotes whether the Real User Monitor engine can internally configure the Real User Monitor probe. If the probe is not configurable, the engine will not attempt to retrieve the probe’s version and the Probe Version field will be empty.

You can refresh the data displayed on the Probe Versions page by clicking the Refresh button at the bottom of the page.



For each Real User Monitor probe listed, there are buttons for starting Auto Discovery, stopping Auto Discovery, and resetting the auto discovery process. There is also a link to view the auto discovery results for the probe.



Note:

- ▶ The start and stop buttons are not enabled simultaneously. When one is enabled, the other is disabled.
 - ▶ The reset button initializes Auto Discovery statistics, and is only enabled when Auto Discovery is running.
 - ▶ When a Real User Monitor probe runs in Auto Discovery mode, it is dedicated to Auto Discovery and does not collect regular data for reporting to the Real User Monitor engine and Mercury Business Availability Center.
-

Viewing Auto Discovery Results

To view Auto Discovery results, click the **Probe Auto Discovery Results** link for the relevant Real User Monitor probe. The Auto Discovery Statistics page opens. Auto Discovery statistics are displayed in the following two tabs:

- ▶ **Domain View.** Groups the statistics by domain names or IP addresses. For each port in the domain, the IP address of each server that connected to the domain is listed, further grouped by the port through which they connect to the domain.
- ▶ **Server View.** Groups the statistics by server IP addresses. For each server, the IP addresses of all the domains to which the server connected are listed, further grouped by the port through which the domain connected to the server.

In each tab, the following information is displayed:

Plain Traffic. The average amount of unencrypted traffic sent and received by the domain, or server.

Encrypted Traffic. The average amount of encrypted traffic sent and received by the domain, or server.

Compressed. Ticked if any of the traffic sent and received by the domain or server was compressed.

Encrypted. Ticked if any of the traffic sent and received by the domain or server was compressed.

Server Info. The name of the server, if available.

More Details. Reserved for future use.

If the statistics data is displayed on more than one page, you can move to different pages using the page buttons located at the upper left part of the screen.



At the top right of the Auto Discovery Statistics page, are buttons that you click to:



- ▶ Refresh the display with the most up to date statistics.
- ▶ Save the current statistics to a file on the Real User Monitor probe machine.

Note: Only one file can be saved per probe. Saving statistics data to a file, overwrites any previously saved data.



- ▶ Load saved statistics from a file on the Real User Monitor probe machine.
- ▶ Reset the current statistics data. Resetting data initializes Auto Discovery statistics.



You can filter the data displayed, either by setting a filter for the type of servers to be displayed, or by searching for domains and servers that match a specific pattern or IP address.

To filter the data displayed by the type of servers, select **local servers**, **remote servers**, or **both** from the filter field located at the top center of the screen. The data is redisplayed according to the filter setting.

To search for domains or servers matching a specific pattern or IP address, enter the search pattern in the search field located at the top left of the screen, and click **Search**. The data is redisplayed according to the records matching the search criteria.

Note:

- ▶ When using the search feature in the **Domain View** tab, you can enter alpha-numeric characters, the asterisk (*) wild card character, and use partial strings for matching. The search filters domain names that include the search string.
- ▶ In the **Server View** tab, you can only enter valid IP addresses in the search field. The search filters server IP addresses that exactly match the search string.

At the bottom of the Auto Discovery page, the date and time that the displayed statistics were retrieved are displayed. From this, you can determine whether the statistics are current, or whether they were loaded from a saved file.

You can start and stop Auto Discovery by clicking **Start Discovery** and **Stop Discovery** at the bottom of the Auto Discovery page.

Session ID Detection

You use the Session ID Detection tool instruct the Real User Monitor probe to detect Session IDs in the traffic it monitors, for applications configured in Monitor Administration. For information on configuring applications in Monitor Administration, see “Configuring Applications” in *End User Management Data Collector Configuration*

To configure applications in Monitor Administration, you use the Auto Discovery and Session ID Detection tools in the following sequence:

- 1 Run the Auto Discovery tool to identify applications on monitored servers.
- 2 Configure the discovered applications in Monitor Administration, without session ID parameters.
- 3 Run the Session ID Detection tool to identify the relevant session IDs for the applications.
- 4 Configure the session ID parameters for the applications in Monitor Administration.

When the Session ID Detection option is selected from the Tools menu, the Session ID Detection page opens. On the Session ID Detection page, the following information is displayed for each configurable and enabled Real User Monitor probe that is connected to the Real User Monitor engine:

- ▶ **Probe IP.** The IP address of the Real User Monitor probe as configured in Monitor Administration. For information on configuring the probe in Monitor Administration, see “Configuring Real User Monitor Engine Settings” in *End User Management Data Collector Configuration*.
- ▶ **Last Completed Collection Time.** The last time that the Session ID Detection tool finished collecting data for session ID analysis.
- ▶ **Remaining Collection Time.** Shows the amount of remaining time for collecting data for session ID analysis.

You can refresh the data displayed on the Session ID Detection page by clicking the Refresh button at the top right of the page.



For each Real User Monitor probe listed, there are buttons for:



- ▶ starting data collection
- ▶ stopping data collection
- ▶ aborting the data collection process

When you start data collection, a dialog box opens in which you specify the amount of time for data collection to run, and whether you want to collect raw data for a specific end-user IP address, in addition to the data collected for all end-user IP addresses.

The **View Report** link displays the Session ID Detection report for the probe. The link is only enabled once the data collection process has been run and has completed.

Note: You can only run the data collection process for one Real User Monitor probe at a time.

Session ID Detection Report

For each application configured for the probe in Monitor Administration, the Session ID Analysis report shows the following information:

- ▶ **Application Name.** The application name, as defined in Monitor Administration. For applications not been defined in Monitor Administration, the application name is **Default Website**. For information on configuring applications in Monitor Administration, see “Configuring Applications” in *End User Management Data Collector Configuration*.
- ▶ **All Session IDs Coverage.** The percentage of hits in the application that contain a discovered session ID key.
- ▶ **Session ID Key.** The session ID key name of the session ID discovered for the application.
- ▶ **Type.** Where the session ID key is located – cookie, query, or cookie and query.

- ▶ **Regular Expression.** The regular expression that uniquely defines the session ID key. The same regular expression should be used in the **Scan for** field in session identification advanced criteria, when configuring an application in Monitor Administration. For information on configuring applications in Monitor Administration, see “Configuring Applications” in *End User Management Data Collector Configuration*.
- ▶ **Specific Session ID Coverage.** The percentage of traffic collected for the application by the data collection process, containing the specific session ID key.
- ▶ **Specific Session ID Correctness.** The probability that Real User Monitor gives the located key of being a real session ID key.

You can display data for a specific application only, display detailed information for a specific session ID key, and view raw data for a single end-user IP address.

To display data for a specific application only:

Select the application in the **Filter By Application Name** filter, located at the top-left of the report.

To display detailed information for a specific session ID key:

Click a specific key in the **Session ID Key** column. The **Session ID Detection Detailed** report is displayed, and shows the following information for the session ID key:

- ▶ **Session ID Properties:**
 - ▶ **Application Name.** The application name, as defined in Monitor Administration.
 - ▶ **Session ID Key.** The session ID key name.
 - ▶ **Type.** Where the session ID key is located – cookie, query, or cookie and query.
 - ▶ **Regular Expression.** The regular expression that uniquely defines the session ID key. The same regular expression should be used in the **Scan for** field in session identification advanced criteria, when configuring an application in Monitor Administration.

- ▶ **Object Retrieve Phrase.** The phrase representing the specific objects to be retrieved from the regular expression. The same phrase should be used in the **retrieve** field in session identification advanced criteria, when configuring an application in Monitor Administration.
- ▶ **Specific Session ID Coverage.** The percentage of traffic collected for the application by the data collection process, containing the specific session ID key.
- ▶ **Specific Session ID Correctness.** The probability that Real User Monitor gives the located key of being a real session ID key.
- ▶ **Examples.** Displays a few examples of the session ID key and the value located in the key.
- ▶ **Set Cookie Params.** If the session ID key is located in a cookie, or in a cookie and query, the path and domain, which are optional parameters sent from the server when setting a cookie for the client, are displayed.
- ▶ **Reasons For Not Locating Session ID Keys in Collected Data.** Displays the percentage of traffic collected by the data collection process, not containing the specific session ID key, and for which a reason can be given.
- ▶ **Reasons For Incomplete Session ID Correctness.** The reasons why Real User Monitor gives the located key a probability of less than 100 percent of being a real session ID key.

To display raw data for a single end-user IP address:

Note: The **View Raw Data** button is only enabled if raw data was collected for a single end-user IP address.

Click **View Raw Data**. The **Session ID Detection Raw Data** report is displayed, and shows the following information for the end-user IP address:

- ▶ **#.** A sequential number indicating the row number in the report.
- ▶ **URI.** The URI of the page or component.
- ▶ **Page/Component.** Indicates whether the data displayed in the row refers to a page or a component.

- ▶ **Referrer.** For a page, the referrer is the calling page; for a component, the referrer is the page in which the component is included.
- ▶ **Client Port.** The port number of the client's machine on which the data was collected.
- ▶ **Set Cookie.** The cookie sent from the server to the client, containing the session ID key.
- ▶ **Cookies.** The content of the cookie included in the URL POST parameters.
- ▶ **Query.** The content of the query.

Monitoring Configuration Information

The Engine Configuration page displays general configuration data of the applications, end-users, events, pages, probes, transactions, and engine that have been configured for monitoring by Real User Monitor in Monitor Administration.

At the top of the Engine Configuration page is the **Sync All Configuration** button, which you click to force the Real User Monitor engine to reload the Real User Monitor configuration from Mercury Business Availability Center.

Sync All Configuration

You display the data type you wish to see by selecting it from the dropdown menu located at the top left corner of the page and clicking **Generate**.

Applications

When you select applications as the data type to be displayed, the following information about the configured applications is displayed:

Column	Description
ID	An internal ID number allocated by Mercury Business Availability Center.
Is Application enabled	True or False – as configured in Monitor Administration.
Name	The name of the application as configured in Monitor Administration.

Column	Description
Default Page time threshold	The default page time threshold, in milliseconds, as configured for the application in Monitor Administration.
Default Server time threshold	The default server time threshold, in milliseconds, as configured for the application in Monitor Administration.
Probes which monitor the application	The IP addresses and names of the probes configured in Monitor Administration to monitor the application.

You can filter the data displayed on the **Name** column. The filter is case sensitive.

For information on configuring applications for monitoring, see “Configuring Applications” in *End User Management Data Collector Configuration*.

End-Users

When you select end-users as the data type to be displayed, the following information about the configured end-users is displayed:

Column	Description
ID	An internal ID number allocated by Mercury Business Availability Center.
Is End User enabled	True or False – as configured in Monitor Administration.
Name	The name of the end-user group as configured in Monitor Administration.
Description	The description of the end-user group as configured in Monitor Administration.
Is Monitored (for collection)	True or False – use host name resolution as configured in Monitor Administration.

You can filter the data displayed on the **Name** column. The filter is case sensitive.

For information on configuring end-user groups for monitoring, see “Configuring End-User Groups” in *End User Management Data Collector Configuration*.

Events

When you select events as the data type to be displayed, the following information about the configured events is displayed:

Column	Description
ID	An internal ID number allocated by Mercury Business Availability Center.
Is Event enabled	True or False – as configured in Monitor Administration.
Name	The name of the event as configured in Monitor Administration.
Event type	The event type as configured in Monitor Administration.
Report As Error	True or False – as configured in Monitor Administration.
Create Snapshot	True or False – as configured in Monitor Administration.

You can filter the data displayed on the **Name** column. The filter is case sensitive.

For information on configuring events for monitoring, see “Configuring Events” in *End User Management Data Collector Configuration*.

Pages

When you select pages as the data type to be displayed, the following information about the configured pages is displayed:

Column	Description
Page ID	An internal ID number allocated by Mercury Business Availability Center.
Is Page Enabled	True or False – as configured in Monitor Administration.
Page Name	The name of the page as configured in Monitor Administration.
Application	The name of the application in which the page is included.
Description	The description of the page as configured in Monitor Administration.
Monitored Type	The monitoring condition as configured in Monitor Administration. The possible conditions are: 1 = Always 2 = Never 3 = Only as part of a transaction
Page Type	Currently not used
Page Time Threshold	The page time threshold, in milliseconds, as configured for the page in Monitor Administration.
Server Time Threshold	The server time threshold, in milliseconds, as configured for the page in Monitor Administration.
Availability Threshold	The availability threshold, in percent, configured for the page in Monitor Administration.
Timeout	The amount of time, in milliseconds, after which the page is considered to have timed out, as configured for the page in Monitor Administration.
Page URL	The URL of the page as configured in Monitor Administration.

You can filter the data displayed on the **Page Name** column. The filter is case sensitive.

For information on configuring pages for monitoring, see “Configuring Pages” in *End User Management Data Collector Configuration*.

Probes

When you select probes as the data type to be displayed, the following information about the configured probes is displayed:

Column	Description
ID	An internal ID number allocated by Mercury Business Availability Center.
Is probe enabled	True or False – as configured in Monitor Administration.
IP	The IP address of the probe as configured in Monitor Administration.
Login username	The user name for logging in to the probe as configured in Monitor Administration.
Name	The name of the probe as configured in Monitor Administration.
Description	The description of the probe as configured in Monitor Administration.
Monitor All Servers	True or False – as configured in Monitor Administration.

You can filter the data displayed on the **Name** column. The filter is case sensitive.

For information on configuring probes for monitoring, see “Configuring a Probe” in *End User Management Data Collector Configuration*.

Transactions

When you select transactions as the data type to be displayed, the following information about the configured transactions is displayed:

Column	Description
Trx ID	An internal ID number allocated by Mercury Business Availability Center.
Is Trx Enabled	True or False – as configured in Monitor Administration.
Trx Name	The name of the transaction as configured in Monitor Administration.
Application	The name of the application in which the transaction is included.
Description	The description of the transaction as configured in Monitor Administration.
Transaction report page	The name of the page which, if reached, will cause the transaction to be reported as unavailable, in the event of a transaction error or timeout within a session.
Refresh behavior	The page instance that is measured in case of a refresh, as configured in Monitor Administration. The possible instances are: 0 = First page 1 = Last page
Timeout	The amount of time, in milliseconds, of inactivity since the last page download in a transaction, that will cause the transaction to time out, as configured for the transaction in Monitor Administration.
Gross Time Threshold	The total transaction time threshold (download time + think time), in milliseconds, as configured for the transaction in Monitor Administration.
Net Time Threshold	The net transaction time threshold, in milliseconds, for the pages included in the transaction, as configured in Monitor Administration.

Column	Description
Server Time Threshold	The server time threshold, in milliseconds, as configured for the transaction in Monitor Administration.
Availability Threshold	The availability threshold, in percent, as configured for the transaction in Monitor Administration.
Trx pages	The names of the pages included in the transaction, as configured in Monitor Administration.

You can filter the data displayed on the **Trx Name** column. The filter is case sensitive.

For information on configuring transactions for monitoring, see “Configuring Transactions” in *End User Management Data Collector Configuration*.

Engine Settings

When you select engine settings as the data type to be displayed, the following information about the configured engine is displayed:

Column	Description
Engine Name	Name of the engine as configured in Monitor Administration.
Profile ID	Internal Mercury Business Availability Center profile ID.
Profile Name	Internal Mercury Business Availability Center profile name.
Engine ID	Internal Mercury Business Availability Center engine ID.
Customer Name	Always default client .
Snapshot page number	Number of pages for which to collect snapshot on error, as configured in Monitor Administration.

Column	Description
Is monitoring default application	The applications that are monitored by the engine, as configured in Monitor Administration. 0 = configured applications only 1 = all applications
Default Application Name	Name of default application (for all applications not configured in Monitor Administration).
Default HTTP Port	Default HTTP port of engine machine.
Default HTTPS Port	Default HTTPS port of engine machine.
Default Application ID	Internal Mercury Business Availability Center application ID.

For information on configuring engine settings, see “Configuring Real User Monitor Engine Settings” in *End User Management Data Collector Configuration*.

Transaction Snapshot Mode

When you select transaction snapshot mode as the data type to be displayed, the following information about the transaction snapshot mode is displayed:

Column	Description
Snapshot mode on	True or False – as configured in Monitor Administration.

For information on configuring transaction snapshot settings, see “Data Reporting Settings” in *End User Management Data Collector Configuration*.

Capture Log Files

You use this tool to create a **.zip** file of the current status of the Real User Monitor for support purposes.

Click **Capture** and specify the name and location of the file.

JMX Console

This option provides a link to the Real User Monitor JMX console, which you use to view and configure Real User Monitor parameters, for example, URL correlation parameters. For details on configuring URL correlation parameters, see “Correlating Collected Data with Configured Pages” in *End User Management Data Collector Configuration*. For details on working with the JMX console, see “Using the Real User Monitor JMX Console” on page 100.

IP Translator

You use the IP Translator tool to convert an IP address into different formats. The formats to which the IP data is translated are:

- ▶ **Host name.** The name of the machine to which the IP address is assigned.
- ▶ **Signed integer.** An internal, signed number used in Real User Monitor data samples.
- ▶ **Unsigned integer.** An internal, unsigned number used in Real User Monitor data samples.
- ▶ **Dotted-format IP address.** The standard, dotted-decimal notation for the IP address.

You select one of the formats and enter the source data you want to convert to the other formats, or you select the **Resolve Engine host** option to use the IP address of the current Real User Monitor engine machine as the source data.

Click **Submit** to translate the source data to all the other formats.

Time Converter

You use the Time Converter tool to convert a time into different formats. The formats to which the time is converted are:

- ▶ the number of milliseconds since January 1, 1970 – an internal number used by the Real User Monitor engine.
- ▶ time in Greenwich Mean Time.
- ▶ time in the time zone set for the Real User Monitor engine machine.

You select one of the formats and enter the source data you want to convert to the other formats, or you select the **Current time** option to use the current time as the source data for conversion.

Click **Submit** to convert the source data to all the other formats.

Current Sessions Report

The Current Sessions Report option displays the Open Sessions report that includes raw data of the open sessions that are still stored in the Real User Monitor database. This report is useful when troubleshooting problems of session definitions in applications, and can help you understand why configured applications may not be reported as defined.

The Open Sessions report comprises three main panes, as well as a line that indicates whether all selected sessions are currently being displayed, or which individual session is currently being displayed. Click on a link in this indicator line to redisplay the relevant information (for example, if an individual session is currently displayed, click on **all physical sessions** to redisplay all the sessions that were originally selected for the report).

The main panes in the Open Sessions report are:

- ▶ **Filter.** Used to filter the data displayed.
- ▶ **Summary.** Shows a summary line of information of all the data displayed in the Breakdown pane.
- ▶ **Breakdown.** Shows information for individual items that are selected according to the filter settings.

Filter Pane

In the filter pane, you can set a filter for selecting the open sessions displayed according to the following criteria:

- ▶ **End User IP.** The IP address of an end-user.
- ▶ **User Name.** The login name of an end-user. You can also enter part of a name and Real User Monitor will search for all records with login names that include the entered text.
- ▶ **BB GUID.** A unique identifier number allocated to each new session by the Real User Monitor probe.

- ▶ **By Time.** For details on specifying a time range, see “Choosing the Tracking Range and Granularity” in *Working with Applications*.

When you have set the filter, click **Generate** to generate the report.

Summary Pane

The Summary pane displays one line of summary information for all the lines displayed in the Breakdown pane. The summary line includes the following fields:

- ▶ **Total Sessions.** The total number of application sessions, as configured in Monitor Administration, that were included in all the Real User Monitor probe sessions displayed in the Breakdown pane. (For details on configuring sessions for applications, see “Configuring Applications” in *End User Management Data Collector Configuration*.)
- ▶ **Total Bytes.** The total size (in bytes) of all the sessions displayed in the Breakdown pane.
- ▶ **Total Hits.** The total number of page hits for all the sessions displayed in the Breakdown pane.
- ▶ **Available Page Time.** The average time (in seconds) for which pages were available in all the sessions displayed in the Breakdown pane.
- ▶ **Unavailable Page Time.** The average time (in seconds) for which pages were unavailable in all the sessions displayed in the Breakdown pane.
- ▶ **HTTP Errors.** The total number of HTTP errors that occurred in all the sessions displayed in the Breakdown pane.
- ▶ **Application Errors.** The total number of application events reported as errors, as configured in Monitor Administration, that occurred in all the sessions displayed in the Breakdown pane. (For details on configuring events for applications in Monitor Administration, see “Configuring Applications” in *End User Management Data Collector Configuration*.)
- ▶ **Info Events.** The total number of application events, as configured in Monitor Administration, that occurred in all the sessions displayed in the Breakdown pane. (For details on configuring applications in Monitor Administration, see “Configuring Applications” in *End User Management Data Collector Configuration*.)

- ▶ **Performance Events.** The total number of times that a sample exceeded its threshold, as configured in Monitor Administration, in all the sessions displayed in the Breakdown pane. (For details on configuring thresholds in Monitor Administration, see “Configuring Real User Monitor Engine Settings” in *End User Management Data Collector Configuration*.)

Breakdown Pane

The Breakdown pane displays individual data for each session selected. The data is displayed in two tabs – General and Advanced.

The **General** tab displays the following information for each session listed:

- ▶ **BB GUID.** A unique identifier number allocated to the session by the Real User Monitor probe.
- ▶ **Total Sessions.** The total number of application sessions, as configured in Monitor Administration, that were included in the Real User Monitor probe session displayed. (For details on configuring sessions for applications in Monitor Administration, see “Configuring Applications” in *End User Management Data Collector Configuration*.)
- ▶ **User IP.** The IP address of the user who initiated the session.
- ▶ **User Name.** The login name of the user who initiated the session.
- ▶ **User Host.** The name of the host machine on which the user initiated the session.
- ▶ **Start Time.** The time that the session was started.
- ▶ **Total Bytes.** The total size (in bytes) of the session.
- ▶ **Total Hits.** The total number of pages hit in the session.
- ▶ **End Time.** The time that the session ended.

The **Advanced** tab displays the following information for each session listed:

- ▶ **BB GUID.** A unique identifier number allocated to the session by the Real User Monitor probe.

- ▶ **Total Sessions.** The total number of application sessions, as configured in Monitor Administration, that were included in the Real User Monitor probe session displayed. (For details on configuring sessions for applications in Monitor Administration, see “Configuring Applications” in *End User Management Data Collector Configuration*.)
- ▶ **User IP.** The IP address of the user who initiated the session.
- ▶ **User Name.** The login name of the user who initiated the session.
- ▶ **Start Time.** The time that the session was started.
- ▶ **Available Page Time.** The average time (in seconds) for which pages were available in the session.
- ▶ **Unavailable Page Time.** The average time (in seconds) for which pages were unavailable in the session.
- ▶ **Http Errors.** The total number of HTTP errors that occurred in the session.
- ▶ **Application Errors.** The total number of application events reported as errors, as configured in Monitor Administration, that occurred in the session. (For details on configuring events for applications in Monitor Administration, see “Configuring Applications” in *End User Management Data Collector Configuration*.)
- ▶ **Info Events.** The total number of application events, as configured in Monitor Administration, that occurred in the session. (For details on configuring applications in Monitor Administration, see “Configuring Applications” in *End User Management Data Collector Configuration*.)
- ▶ **Performance Events.** The total number of times that a sample exceeded its threshold, as configured in Monitor Administration, in all the sessions displayed in the Breakdown pane. (For details on configuring thresholds in Monitor Administration, see “Configuring Real User Monitor Engine Settings” in *End User Management Data Collector Configuration*.)
- ▶ **Last Hit Time.** The time that the last page in the session was hit.

Within either tab, click on an individual BB GUID to display the following information for that session:

- ▶ **App ID.** The Real User Monitor internal ID number for the application configured in Monitor Administration. (For details on configuring applications in Monitor Administration, see “Configuring Applications” in *End User Management Data Collector Configuration*.)
- ▶ **Session ID.** The Real User Monitor internal ID number for the application session configured in Monitor Administration. (For details on configuring sessions for applications in Monitor Administration, see “Configuring Applications” in *End User Management Data Collector Configuration*.)
- ▶ **User IP.** The IP address of the user who initiated the session.
- ▶ **User Host.** The name of the host machine on which the user initiated the session.
- ▶ **User Name.** The login name of the user who initiated the session.
- ▶ **Start Time.** The time that the session was started.
- ▶ **Probe IP.** The IP address of the Real User Monitor probe that monitored the session.
- ▶ **Protocol.** The protocol used by the session (HTTP or HTTPS).
- ▶ **User Legacy Name.** The name of the end-user group, as configured in Monitor Administration, to which the user who initiated the session belongs, and the range of IP addressees included in the end-user group. (For details on configuring end-user groups in Monitor Administration, see “Configuring End-User Groups” in *End User Management Data Collector Configuration*.)
- ▶ **End Time.** The time that the session ended.

When an individual session is displayed, click on the BB GUID to display the click-stream for the session (that is, the pages included in the session). The click-stream displays two panes of information. The first pane includes the details for the session as displayed in the General and Advanced tabs of the Breakdown pane of the report, and the second pane displays the following information for each page included in the session:

- ▶ **Hit ID.** The sequence number of the page in the session.

- ▶ **URL.** The URL of the page, including the GET/POST data. If a URL is too long to be displayed in full, it will be partially displayed and will include three dots (...). Click on the URL to open a window displaying the entire URL.
- ▶ **Application Name (ID).** The name of the application, as configured in Monitor Administration, in which the page is included, and Real User Monitor's internal ID number for the application. (For details on configuring applications in Monitor Administration, see "Configuring Applications" in *End User Management Data Collector Configuration*.)
- ▶ **Page Name (ID).** The name of the page, as configured in Monitor Administration, and Real User Monitor's internal ID number for the page. (For details on configuring pages for applications in Monitor Administration, see "Configuring Applications" in *End User Management Data Collector Configuration*.)
- ▶ **Timestamp.** The date and time that the page was hit.
- ▶ **Server Name.** The name of the server on which the page was located.
- ▶ **Server IP.** The IP address of the server on which the page was located.
- ▶ **Page Time.** The total time (in milliseconds) that the page was active.



You can refresh the click-stream data displayed by clicking the Refresh button at the top, right hand side of the page.

Using the Real User Monitor JMX Console

You use the Real User Monitor Engine JMX Console to view and configure Real User Monitor settings.

This section includes the following topics:

- ▶ "Accessing the JMX Console" on page 101
- ▶ "Setting URL Correlation Parameters" on page 102
- ▶ "Configuring Real User Monitor Aggregation" on page 102
- ▶ "Configuring Real User Monitor Reporting" on page 104

Accessing the JMX Console

Via the JMX console, you can view and configure Real User Monitor parameters, view statistics for Real User Monitor modules and services, and view and configure JBoss components.

Once you start the Real User Monitor engine after installation, you can access the Real User Monitor Engine JMX Console by launching the Real User Monitor Engine Web console and choosing **JMX Console** from the **Configuration** dropdown menu. To access a specific area of the JMX Console for an individual Real User Monitor module, select **Advanced Settings** from the **Configuration** dropdown menu in the Real User Monitor Engine Web console and then click on the links for the module you wish to view. For details on the Real User Monitor Engine Web console, see “Using the Real User Monitor Web Console” on page 52.

When you access the JMX console, you are prompted for a user name and password. Use the default of **admin** for both the user name and password.

Note: You can access the Real User Monitor Engine JMX Console from a different machine by launching a Web browser and typing the following:

`http://<Real User Monitor engine machine name>:8180/jmx-console`

Important: Changing any of the JMX configuration settings can cause Mercury Real User Monitor to malfunction. It is recommended not to change any of these settings.

Setting URL Correlation Parameters

You can configure a number of parameters used by Real User Monitor when correlating recorded URLs with URLs you have configured for monitoring. For details on URL correlation, see “Principles of Correlation” in *End User Management Data Collector Configuration*. For details on configuring URLs for monitoring, see “Configuring the Real User Monitor” in *End User Management Data Collector Configuration*.

Some of the URL correlation parameters are set using the Real User Monitor JMX console. For details on changing URL correlation parameters via the Real User Monitor JMX console, see “Setting URL Correlation Parameters Via the JMX Console” on page 105.

Configuring Real User Monitor Aggregation

Real User Monitor pre-aggregates a number of the data samples it sends to Mercury Business Availability Center. For details on Mercury Business Availability Center aggregation, see “Data Aggregation” in *Reference Information*. For details on Real User Monitor pre-aggregation, see “Aggregating Real User Monitor Data” in *Using End User Management*.

You can change the Real User Monitor default aggregation periods via the JMX console. The following table shows the data sample types that are pre-aggregated by Real User Monitor, their parameter names in the JMX console, and the default aggregation time period:

Data Sample Type	JMX Parameter Name	Default Aggregation Period (in milliseconds)
Page	aggregator.definedPages.interval	300000
Slow Domain	aggregator.domains.interval	300000
Domain		
Missing Component	aggregator.missingComponents.interval	300000

Data Sample Type	JMX Parameter Name	Default Aggregation Period (in milliseconds)
Server	aggregator.Servers. interval	300000
Slow Page	aggregator.SlowPages. interval	300000
Page with Most Errors	aggregator.pageerrorevent. interval	300000
Top Domain	aggregator.TopDomains. interval	3600000
Top Page	aggregator.TopPages. interval	3600000

Note: The Slow Domain and Domain data sample types both use the same JMX parameter. Changing the default aggregation period for this parameter will change the aggregation period for both of the data sample types.

To change the Real User Monitor default aggregation periods via the JMX console:

- 1** Access the JMX console by choosing **JMX Console** from the Configuration dropdown menu in the Real User Monitor Web console, or by using the following URL in your Web browser:
<http://<Real User Monitor engine machine name>:8180/jmx-console>
- 2** In the JMX Agent View, scroll down to the **RUM.modules** section and click **service=StatisticsMgrConf**.
- 3** In the **Properties** attribute, under the commented lines (the lines beginning with #), enter the parameter and the aggregation period (in milliseconds) you want to change, in the format:
attribute name=aggregation period

For example, to change the aggregation period of the Server sample type to 10 minutes, enter:

```
aggregator.Servers.interval=600000
```

- 4 Click the **Apply Changes** button to save the change.
- 5 Click the **Invoke** button for the **deployConfiguration** operation to activate the change.

Note: Changing the default aggregation periods can significantly affect the amount of data sent by Real User Monitor to Mercury Business Availability Center. It is recommended not to change the default aggregation periods.

Configuring Real User Monitor Reporting

By default, Real User Monitor reports data to Mercury Business Availability Center for all end-users, both those configured in end-user groups in Monitor Administration and those who are not configured. (For details on configuring end-users in Monitor Administration, see “Configuring End-User Groups” in *End User Management Data Collector Configuration*.) You can configure Real User Monitor to report data only for configured end-users.

Note: Mercury Business Availability Center includes a list of predefined end-user names and domains to give meaningful names to end-users in Real User Monitor reports. If you configure Real User Monitor to report data only for configured end-users, data for end-users in the predefined list will not be reported to Mercury Business Availability Center. For details of Real User Monitor reports, see “Real User Monitor Reports” in *Using End User Management*.

To configure Real User Monitor to report data for configured end-users only:

- 1** Access the JMX console by choosing **JMX Console** from the Configuration dropdown menu in the Real User Monitor Web console, or by using the following URL in your Web browser:
`http://<Real User Monitor engine machine name>:8180/jmx-console`
- 2** In the JMX Agent View, scroll down to the **RUM.modules** section and click **service=StatisticsMgrConf**.
- 3** In the **ShouldReportUndefinedDomains** parameter, change the value to **false**.
- 4** Click the **Apply Changes** button to save the change.
- 5** Click the **Invoke** button for the **deployConfiguration** operation to activate the change.

URL Correlation Parameters

Once the Real User Monitor engine has been installed and started, you can configure a number of parameters to determine how the Real User Monitor correlates recorded URLs with Web pages you have configured for monitoring in Monitor Administration.

This section includes the following topics:

- “Setting URL Correlation Parameters Via the JMX Console” on page 105
- “Correlating Session ID Parameters” on page 108

Setting URL Correlation Parameters Via the JMX Console

You can change the default setting of a number of parameters used by Real User Monitor when correlating recorded URLs with URLs you have configured for monitoring. For details on URL correlation, see “Principles of Correlation” in *End User Management Data Collector Configuration*. For details on configuring URLs for monitoring, see “Configuring the Real User Monitor” in *End User Management Data Collector Configuration*.

You can configure the following parameters for URL correlation in the JMX console:

- ▶ **adaptIndexurl**. By default, Real User Monitor considers URLs with a suffix of **index.html** (and other suffixes that are configured in the **urlIndexStrings** parameter) to be same as the root URL. For example, **http://www.mercury.com/index.html** is considered to be the same as **http://www.mercury.com/**. To instruct Real User Monitor to consider all suffixes as being different from the root URL, change this parameter to **False**.
- ▶ **urlIndexStrings**. URL suffixes configured in this parameter are considered to be the same as the root URL, if the **adaptIndexurl** parameter is set to **True**. For example, if the suffix **index.html** is configured, then **http://www.mercury.com/index.html** is considered to be the same as **http://www.mercury.com/**. By default, the suffix **index.html** is configured in this parameter. To add additional suffixes, add them to the string separated by a semicolon (;). The last suffix in the string must also be followed by a semicolon. For example, **;/index.html;/index.aspx;**

Note:

- ▶ For the **urlIndexStrings** parameter to be active, the **adaptIndexurl** parameter must be set to **true**.
 - ▶ The index strings in the **urlIndexStrings** parameter are considered as being identical for all URLs. For example, if **;/index.html;** is configured in the **urlIndexStrings** parameter then **http://www.mercury.com/** and **http://www.mercury.com/index.html** are considered as being identical, **http://www.merc-int.com/** and **http://www.merc-int.com/index.html** are considered as being identical, and so forth.
 - ▶ Changing the **urlIndexStrings** parameter requires the Real User Monitor Engine Resolver to be restarted. For details, see “To restart the Real User Monitor Engine Resolver:” on page 107.
-

- **adaptCaseSensitive.** By default, Real User Monitor URL correlation is case-insensitive, so that a recorded URL such as **http://www.mercury.com/rumEnginePage.html** will be correlated with the configured URL **http://www.mercury.com/rumenginepage.html**. To instruct Real User Monitor to use case-sensitive URL correlation (for all but the host and protocol parts of a URL), you set this parameter to **False**.
- **basicAuthentication.** By default, Real User Monitor ignores basic authentication when performing URL correlation. For example, the recorded URL **http://bob:my_password@www.mercury.com** will be correlated with the configured URL **http://www.mercury.com**. To instruct the Real User Monitor to consider basic authentication when performing URL correlation, you set this parameter to **False**.

To change the default setting of a URL correlation parameter in the JMX console:

- 1** Access the JMX console by choosing **JMX Console** from the Configuration dropdown menu in the Real User Monitor Web console, or by using the following URL in your Web browser:
`http://<Real User Monitor engine machine name>:8180/jmx-console`
- 2** In the JMX Agent View, scroll down to the **RUM.modules** section and click **service=ResolverURLMConfig**.
- 3** In the relevant parameter, change the setting to the required value.
- 4** Click the **Apply Changes** button.

To restart the Real User Monitor Engine Resolver:

- 1** Access the JMX console by choosing **JMX Console** from the Configuration dropdown menu in the Real User Monitor Web console, or by using the following URL in your Web browser:
`http://<Real User Monitor engine machine name>:8180/jmx-console`
- 2** In the JMX Agent View, scroll down to the **RUM.modules** section and click **service=Resolver**.
- 3** Scroll down to the **restart** operation and click **Invoke**.

Correlating Session ID Parameters

You can configure specific parameters in recorded URLs to be ignored by Real User Monitor when correlating recorded URLs with URLs you have configured for monitoring in Monitor Administration. For details on URL correlation, see “Principles of Correlation” in *End User Management Data Collector Configuration*. For details on configuring URLs for monitoring, see “Configuring the Real User Monitor” in *End User Management Data Collector Configuration*.

If you set a parameter to be ignored by Real User Monitor, and the parameter is included in a recorded URL, the Real User Monitor will replace the contents of that parameter with an asterisk (*). For example, if you set Real User Monitor to ignore the **BV_SessionID** and **BV_EngineID** parameters in the following URL:

```
http://www.mercury.com/~anand/Ticket_Confirm.jsp?BV_SessionID=@@@@1812057630.1043567934@@@@&BV_EngineID=cccdadchgdfmlmcefecehidfhfdffk.0&value=0000144976
```

The URL is translated as follows:

```
http://www.mercury.com/~anand/Ticket_Confirm.jsp?BV_SessionID=*&BV_EngineID=*&value=0000144976
```

The parameters to be ignored are defined per application server.

To configure session ID parameters to be ignored:

- 1 Open the **MercuryRUM\conf\configurationmanager\Application_Server_Types_configuration.xml** file in a text editor.
- 2 Locate the application server type for which you are configuring the parameters to be ignored. This appears in the format `<AppServer name="app_server_name">`, where `app_server_name` is the name of the application server type. For example, for a Broadvision application server, the entry is:

```
<AppServer name="BroadVision">
```

- 3** Under the application server name, in the section beginning with the `<DiscardParameters>` tag, is a list of the most common session ID parameters for that application server. You can add and delete parameters to create a list of all the parameters you want Real User Monitor to ignore during correlation. Parameters are entered in the format `<parameter>parameter_name</parameter>`, where `parameter_name` is the name of the parameter. For example, for a parameter called `BV_EngineID`, the entry is.

```
<parameter>BV_EngineID</parameter>
```

- 4** If you want Real User Monitor to consider the parameters you enter as a regular expression instead of a string (which is the default), you add `type="regEx"` to the `<DiscardParameters>` tag. For example, `<DiscardParameters type="regEx">`

- 5** Under the application server name, in the line:

```
<attribute name="enabled">false</attribute>
```

change `false` to `true`.

- 6** Save the file and exit the editor.

Configuring Meaningful Page Names

You can configure Real User Monitor to change the URLs of recorded pages that are not configured in Monitor Administration to more meaningful names for use in Real User Monitor reports. For information on configuring pages for monitoring, see “Configuring Pages” in *End User Management Data Collector Configuration*. For information on Real User Monitor reports, see “Real User Monitor Reports” in *Using End User Management*.

This section includes the following topics:

- ▶ “About Meaningful Page Names” on page 110
- ▶ “Formatting Tags” on page 111
- ▶ “Rules Tags” on page 122
- ▶ “Sample XML File” on page 126
- ▶ “Validating Meaningful Name XML Files” on page 133

- ▶ “Adding and Deleting Meaningful Name XML Files” on page 134
- ▶ “Changing Meaningful Name XML Files” on page 135
- ▶ “Viewing Meaningful Page Statistics” on page 136

About Meaningful Page Names

For each application configured in Monitor Administration, you can create an XML file to be used to give meaningful names to pages that are recorded as part of the application, but that are not configured as pages in Monitor Administration. For information on configuring applications for monitoring, see “Configuring Applications” in *End User Management Data Collector Configuration*. For information on configuring pages for monitoring, see “Configuring Pages” in *End User Management Data Collector Configuration*.

If an XML file has been created and an application linked to it, when a page that is not configured in Monitor Administration is recorded as part of the application, the page’s URL will be compared to the rules in the XML file. If matches are found, the page will be given a new name for use in Real User Monitor reports. If no matches are found, or if no XML file has been created and linked to the application, the page’s URL as recorded will be used in Real User Monitor reports. For information on Real User Monitor reports, see “Real User Monitor Reports” in *Using End User Management*.

The XML file must be created in the `\<Real User Monitor root directory>\conf\resolver\meaningful_pages` directory on the Real User Monitor engine machine. For convenience, it is recommended that the file name is the same as the application name. For example, an XML file created for an application called **myapplication** is:

```
\<Real User Monitor root directory>\conf\resolver\meaningful_pages\  
myapplication.xml
```

Note: Real User Monitor includes two default XML files for the PeopleSoft 8.1 and Siebel 7.5 applications.

The XML file contains the following main sections:

- ▶ **Formatting.** Contains the formatting commands for changing a URL into a meaningful name.
- ▶ **Rules.** Contains the rules that determine whether or not a page's URL will be changed to a meaningful name.

Tip: It is recommended to create the rules before the formats.

Formatting Tags

The first main section in the XML file is the formatting section, which contains the XML tags that are used to format parts of a page's URL, which are then used to create a meaningful name for the page.

Note: All parts of a page's URL are converted by Real User Monitor to lower case for matching and formatting.

The following formatting tags can be used. For the XML schema to be validated (for details, see "Validating Meaningful Name XML Files" on page 133), the tags must appear in the XML file in the order in which they are listed below:

URLDecoder

The URLDecoder tag is used to decode a source string using a specified decoder.

Syntax	<code><URLDecoder Name="Command_Name" EncodingScheme="Scheme"/></code>
Explanation	<p>Command_Name. The name of the Substring formatting tag that can be used in Rule tags.</p> <p>Scheme. The decoding scheme to be used.</p>

Example	<pre><URLDecoder Name="DecodeUTF-8" EncodingScheme="UTF-8"/></pre> <p>When the DecodeUTF-8 formatting command is referenced in a rule, the string is decoded using the UTF-8 decoding scheme.</p>
Note	<p>If the URLDeocder tag is used, but no encoding scheme is specified, the UTF-8 scheme is used by default.</p>

Rename

The Rename tag is used to replace the entire contents of a source string.

Syntax	<pre><Rename Name="Command_Name" NewName="Rename_String"/></pre>
Explanation	<p>Command_Name. The name of the Rename formatting tag that can be used in Rule tags.</p> <p>Rename_String. The string to be substituted for the source string.</p>
Example	<pre><Rename Name="RenameToABC123" String="Mercury"</pre> <p>When the RenameToABC123 formatting command is referenced in a rule, the entire source string is renamed to Mercury.</p>

Substring

The Substring tag is used to extract a sub string from the source string.

Syntax	<Substring Name=" Command_Name " BeginIndex=" Start_Char_Index " Count=" Length "/>
Explanation	<p>Command_Name. The name of the Substring formatting tag that can be used in Rule tags.</p> <p>Start_Char_Index. The position in the source string of the starting character of the substring to be extracted. The first position in the source string is the zero index.</p> <p>Length. The number of characters from the Start_Char to be extracted. If the number used is greater than the number of characters from the Start_Char to the end of the source string, the entire string from the Start_Char to the end of the source string will be extracted.</p>
Example	<pre><Substring Name="ExtractTenToTwelve" BeginIndex="10" Count="3"/></pre> <p>When the ExtractTenToTwelve formatting command is referenced in a rule, the tenth, eleventh, and twelfth characters of the source string are extracted.</p>

ExtractStrToStr

The ExtractStrToStr tag is used to extract a string between two given strings from the source string.

Syntax	<pre><ExtractStrToStr Name="Command_Name" fromString="Start_String" fromInclude="Include_Start_String" fromOccurrences="Occurrences_Start_String" toString="End_String" toInclude="Include_End_String" toOccurrences="Occurrences_End_String"/></pre>
---------------	---

<p>Explanation</p>	<p>Command_Name. The name of the ExtractStrToStr formatting tag that can be used in Rule tags.</p> <p>Start_String. The starting string from which the required string is to be extracted.</p> <p>Include_Start_String. Whether to include the starting string as part of the extracted string. Valid options are:</p> <ul style="list-style-type: none"> ▶ True. Include the starting string as part of the extracted string. This is the default used if nothing is specified. ▶ False. Do not include the starting string as part of the extracted string. <p>Occurrences_Start_String. The occurrence number of the starting string at which to start the extraction of the required string. Valid options are 1-100 or last.</p> <p>End_String. The ending string up to which the required string is to be extracted.</p> <p>Include_End_String. Whether to include the ending string as part of the extracted string. Valid options are:</p> <ul style="list-style-type: none"> ▶ True. Include the ending string as part of the extracted string. This is the default used if nothing is specified. ▶ False. Do not include the ending string as part of the extracted string. <p>Occurrences_End_String. The occurrence number of the ending string at which to end the extraction of the required string. Valid options are 1-100 or last.</p>
<p>Example</p>	<pre><ExtractStrToStr Name="ExtractBetweenABCandXYZ" fromString="ABC" fromInclude="true" fromOccurrences="2" toString="XYZ" toInclude="false" toOccurrences="1"/></pre> <p>When the ExtractBetweenABCandXYZ formatting command is referenced in a rule, the string between the second occurrence of ABC and the first occurrence of XYZ in the source string is extracted. The starting string of ABC is also included at the beginning of the extracted string.</p>

ExtractIndexToStr

The ExtractIndexToStr tag is used to extract a string between a given starting position and a given ending string in the source string.

Syntax	<pre><ExtractIndexToStr Name="Command_Name" fromIndex="Start_Char_Index" toString="End_String" toInclude="Include_End_String" toOccurrences="Occurrences_End_String"/></pre>
Explanation	<p>Command_Name. The name of the ExtractIndexToStr formatting tag that can be used in Rule tags.</p> <p>Start_Char_Index. The character number from which to start extracting the required string. The first position in the source string is the zero index.</p> <p>End_String. The ending string up to which the required string is to be extracted.</p> <p>Include_End_String. Whether to include the ending string as part of the extracted string. Valid options are:</p> <ul style="list-style-type: none"> ▶ True. Include the ending string as part of the extracted string. This is the default used if nothing is specified. ▶ False. Do not include the ending string as part of the extracted string. <p>Occurrences_End_String. The occurrence number of the ending string at which to end the extraction of the required string. Valid options are 1-100 or last.</p>
Example	<pre><ExtractIndexToStr Name="ExtractBetween3andXYZ" fromIndex="3" toString="XYZ" toInclude="false" toOccurrences="1"/></pre> <p>When the ExtractBetween3andXYZ formatting command is referenced in a rule, the string between the third index of the source string and the first occurrence of XYZ in the source string is extracted.</p>

ExtractStrToCount

The ExtractStrToCount tag is used to extract a string of a specified number of characters starting at a given string in the source string.

Syntax	<pre><ExtractStrToCount Name="Command_Name" fromString="Start_String" fromInclude="Include_Start_String" fromOccurrences="Occurrences_Start_String" count="Length" /></pre>
Explanation	<p>Command_Name. The name of the ExtractStrToCount formatting tag that can be used in Rule tags.</p> <p>Start_String. The starting string from which the required string is to be extracted.</p> <p>Include_Start_String. Whether to include the starting string as part of the extracted string. Valid options are:</p> <ul style="list-style-type: none"> ▶ True. Include the starting string as part of the extracted string. This is the default used if nothing is specified. ▶ False. Do not include the starting string as part of the extracted string. <p>Occurrences_Start_String. The occurrence number of the starting string at which to start the extraction of the required string. Valid options are 1-100 or last.</p> <p>Length. The number of characters from the Start_String to be extracted. If the number used is greater than the number of characters from the Start_String to the end of the source string, the entire string from the Start_String to the end of the source string will be extracted.</p>
Example	<pre><ExtractStrToCount Name="ExtractBetweenABCfor5" fromString="ABC" fromInclude="false" fromOccurrences="1" count="5"/></pre> <p>When the ExtractBetweenABCfor5 formatting command is referenced in a rule, a string comprising the five characters after the first occurrence of the string ABC in the source string is extracted.</p>

Insert

The Insert tag is used to insert a string into a source string at a specified position.

Syntax	<pre><Insert Name="Command_Name" String="Insert_String" ToIndex="Start_Char_Index" CountFromBeginning="Direction"/></pre>
Explanation	<p>Command_Name. The name of the Insert formatting tag that can be used in Rule tags.</p> <p>Insert_String. The string to be inserted in the source string.</p> <p>Start_Char_Index. The character number at which to insert the Insert_String in the source string. The first position in the source string is the zero index.</p> <p>Direction. Whether to start counting the Start_Char index position from the start of the source string (that is, from left to right) or from the end of the source string (that is, from right to left). The valid options are:</p> <ul style="list-style-type: none"> ▶ True. Start counting the Start_Char index position from the start of the source string (that is, from left to right). This is the default used if no direction is specified. ▶ False. Start counting the Start_Char index position from the end of the source string (that is, from right to left).
Example	<pre><Insert Name="InsertABCAfterOrder" String="ABC" ToIndex="5"/></pre> <p>When the InsertABCAfterOrder formatting command is referenced in a rule, the string ABC is inserted in the source string, starting at the fifth index (that is, the letter A becomes the fifth character in the source string).</p>

ChangeCase

The ChangeCase tag is used to change the case of a string.

Syntax	<ChangeCase Name=" Command_Name " Type=" Case_Type " BeginIndex=" Start_Char_Index " Count=" Length "/>
Explanation	<p>Command_Name. The name of the ChangeCase formatting tag that can be used in Rule tags.</p> <p>Case_Type. The type of conversion to be carried out. The valid options are:</p> <ul style="list-style-type: none"> ▶ UpperCase. Lower case to upper case. This is the default if no type is specified. ▶ LowerCase. Upper case to lower case. ▶ OppositeCase. Switches the case of characters. <p>Start_Char_Index. The position in the source string of the starting character to be converted. The first position in the source string is the zero index.</p> <p>Length. The number of characters from the Start_Char to be converted.</p>
Example	<pre><ChangeCase Name="UpperCaseFirstChar" Type="UpperCase" BeginIndex="0" Count="1"/></pre> <p>When the UpperCaseFirstChar formatting command is referenced in a rule, the first character of the source string is converted to upper case.</p>
Note	If Length is not specified, the ChangeCase conversion will be carried out from the Start_Char to the end of the source string.

Remove

The Remove tag is used to remove all occurrences of a specified string from a source string.

Syntax	<Remove Name=" Command_Name " String=" Remove_String "/>
Explanation	Command_Name. The name of the Remove formatting tag that can be used in Rule tags. Remove_String. The string to be removed from the source string.
Example	<Remove Name="Removeabc" String="abc" When the Removeabc formatting command is referenced in a rule, the string abc is removed from the source string.

RemoveNonAlpha

The RemoveNonAlpha tag is used to remove all non-alpha characters from a source string.

Syntax	<RemoveNonAlpha Name=" Command_Name ">
Explanation	Command_Name. The name of the RemoveNonAlpha formatting tag that can be used in Rule tags.
Example	<Remove Name="RemoveAllNonAlpha" When the RemoveAllNonAlpha formatting command is referenced in a rule, all non-alpha characters are removed from the source string.

Replace

The Replace tag is used to replace all occurrences of a sub string within a source string.

Syntax	<Replace Name=" Command_Name " Old=" Old_String " New=" New_String " />
Explanation	<p>Command_Name. The name of the Replace formatting tag that can be used in Rule tags.</p> <p>Old_String. The sub string within the source string to be replaced.</p> <p>New_String. The string that replaces Old_String.</p>
Example	<pre><Replace Name="ReplaceabcWithXYZ" Old="abc" New="XYZ"/></pre> <p>When the ReplaceabcWithXYZ formatting command is referenced in a rule, all occurrences of abc in the source string are replaced with XYZ.</p>

Alias

The Alias tag is used to replace all occurrences of an alphanumeric sub string within a string with an assigned alias.

Syntax	<pre><Alias Name="Command_Name"> <Pair Name="Source_String" Alias="Assigned_Alias"/> </Alias></pre>
Explanation	<p>Command_Name. The name of the Alias formatting tag that can be used in Rule tags.</p> <p>Source_String. The alphanumeric string to which you are assigning an alias.</p> <p>Assigned_Alias. The alias you are assigning to replace the Source_String.</p>
Example	<pre><Alias Name="RelateLettersToCategory"> <Pair Name="fi" Alias="Fish"/> </Alias></pre> <p>When the RelateLettersToCategory formatting command is referenced in a rule, all occurrences of the string fi are replaced with the alias Fish.</p>
Note	<p>You can include multiple Pair tags within the same Alias tag. Each Alias replacement will be carried out on the output string from the previous Alias replacement – that is, there is only one output string at the end.</p>

Rules Tags

The second main section in the XML file is the rules section, which contains the logic for assigning a meaningful name to a page. The rules section is responsible for matching a page to a single rule and then using the formatting tags included in the rule to assign a meaningful name to the page. Matching is carried out on the different parts of the URL – URL protocol, URL path, URL host, and parameters (both the GET and POST parameters of a page).

Rules are prioritized, so that if a page's URL matches more than one rule, the rule that has the highest priority will be the single rule that is applied to the page.

The rules section uses a default string delimiter of a space (" "), but you can specify a different delimiter by including it in the **Rules** tag that begins the rules section. For example, to set a default delimiter of a right, square bracket:

```
<Rules DefaultDelimiter="]">
```

Individual rules can use a different delimiter than the general default, if specified within the specific rule.

Rules are written in the following format:

```
<Rule Priority="Priority" Name="Rule_Name">
  <Path Name="URL_Path">
  <Host Name="URL_Host">
  <Protocol Type="URL_Protocol">
  <Parameters>
    <Param Key="Param_Name" Value="Param_Value">
      <Formatter Index="Index_Number">Format_Name1</Formatter>
      <Formatter Index="Index_Number">Format_Name2
Format_Name3</Formatter>
    </Param>
  </Parameters>
</Rule>
```

where:

- **Priority.** The priority in which the rule should be applied. If more than one rule matches the source string, the rule with the highest priority is the one that will be applied. 0 is the highest priority, 1 is the second, and so forth.

If more than one rule has the same priority, the last one that appears in the XML file is the rule that is applied.

Tip: When assigning priorities to rules, you can use increments greater than 1. For example, you can assign priorities of 10, 20, 30, and so forth. This allows flexibility for inserting new rules at a later time.

- ▶ **Rule_Name.** The name of the rule.
- ▶ **URL_Path.** The URL path that is required for the rule to be applied.
- ▶ **URL_Host.** The URL host that is required for the rule to be applied. This option does not support the use of a wildcard.
- ▶ **URL_Protocol.** The URL protocol that is required for the rule to be applied. This option does not support the use of a wildcard.
- ▶ **Param_Name.** The key (name) of a parameter in the URL that is required for the rule to be applied.
- ▶ **Param_Value.** The value in the Param_Name parameter that is required for the rule to be applied. Use "" to denote an empty parameter value.
- ▶ **Index_Number.** The position that the formatted string will occupy in the meaningful name to be created.
- ▶ **Format_Name.** The name of the format to be used on the selected string to format it into a string that will be used as part of the created meaningful name for a page. The format name must be one of the formats defined in the formatting section of the XML file (for details, see “Formatting Tags” on page 111).

Note: URL_Path, URL_Host, URL_Protocol, Param_Name, and Param_Value are always in lower case.

The following points are applicable to rules:

- ▶ Not all parts of a rule need to exist, but at least one rule should be defined and it should contain a **Formatter** tag.

- If a **Formatter** tag is placed directly under a **Param** tag, the formatting will be carried out on the parameter value. If a **Formatter** tag is placed directly under a **Path** tag, the formatting will be carried out on the URL path.
- If an asterisk (*) or question mark (?) character is included in a URL path, parameter name, or parameter value, you can specify whether to treat the character as a literal (that is, purely as an asterisk or question mark), or to treat it as a wildcard character. By default, the character is treated as a literal. To treat the character as a wildcard character, you add the setting **CompareMethod="Wildcard"** at the end of the rule tag in which the character appears. For example:

```
<Param Key="myparam" Value="*" CompareMethod="Wildcard">
```

To use an asterisk or question mark character as a literal within a wildcard value, precede the character with a backslash (\). For example, the wildcard value **my*str*** will match the value **my*str123**, but will not match the value **my123str123**.

Note:

- The asterisk wildcard represents any combination of characters, whereas the question mark wildcard represents a single character only.
 - Using the wildcard comparison on page parameters creates significant overhead on the Real User Monitor engine and should be used only when absolutely necessary.
-
- You can apply multiple format names to a Path or Param tag. If the format names are placed in individual Formatter tags one under the other, each format name will be applied to the original path or parameter value and each format name will produce its own output for inclusion in the meaningful name. If the format names are included in the same Formatter tag, each format name will be applied to the resulting value from the previous format name and only one result will be created for inclusion in the meaningful name.

Example of multiple formatting commands in separate Formatter tags:

```
<Path Name="/mypath/home">
  <Formatter Index="1">Format_Name1</Formatter>
  <Formatter Index="2">Format_Name2</Formatter>
  <Formatter Index="3">Format_Name3</Formatter>
</Path>
```

Each of the format names will be applied to the path **/mypath/home**.

Example of multiple formatting commands in the same Formatter tag:

```
<Path Name="/mypath/home">
  <Formatter Index="1">Format_Name1 Format_Name2</Formatter>
</Path>
```

Format_Name1 will be applied to the path **/mypath/home**; Format_Name2 will be applied to the output from Format_Name1.

Sample XML File

The following examples show an XML file with formatting and rule tags defined, and various examples of URLs and the meaningful names created for them based on the formatting and rule tags in the sample XML file.

XML File

```
<?xml version="1.0"?>
<Meaningful_Pages xmlns:xsi="http://www.w3.org/2001/XMLSchema-instance"
xsi:noNamespaceSchemaLocation="./meaningfulpages.xsd">
  <Formating>
    <Rename Name="RenameToWelcome" NewName="Welcome"/>
    <Rename Name="RenameToSignIn" NewName="Sign In"/>
    <Rename Name="RenameToStoreEntrance" NewName="Store Entrance"/>
    <Rename Name="RenameToEditAccount" NewName="Edit Account"/>
    <Rename Name="RenameToProduct" NewName="Product"/>
    <Rename Name="RenameToCheckOut" NewName="Check Out"/>
    <Rename Name="RenameToOrderSubmitted" NewName="Order
Submitted"/>
    <Rename Name="RenameToSignOut" NewName="Signed Out"/>
    <SubString Name="ExtractTwoFirstLetters" BeginIndex="0" Count="2"/>
    <SubString Name="ExtractItem" BeginIndex="20" Count="4"/>
    <SubString Name="ExtractUpdate" BeginIndex="16" Count="6"/>
```



```

<SubString Name="ExtractCart" BeginIndex="22" Count="4"/>
<SubString Name="ExtractQuantities" BeginIndex="26" Count="10"/>
<Insert Name="AppendCategory" String="Category " ToIndex="0"/>
<Insert Name="AppendAddItemPrefix" String="Add Item " ToIndex="0"/>
<Insert Name="AppendToCartSuffix" String=" to Cart" ToIndex="0"
CountFromBeginning="false"/>
  <Insert Name="AppendRemoveItemPrefix" String="Remove Item "
ToIndex="0"/>
  <Insert Name="AppendFromCartSuffix" String=" from Cart" ToIndex="0"
CountFromBeginning="false"/>
  <Insert Name="InsertSpaceAfterOrder" String=" " ToIndex="5"/>
  <Insert Name="InsertSpaceAfterConfirm" String=" " ToIndex="7"/>
  <Insert Name="InsertNotAfterOrder" String="Not " ToIndex="6"/>
  <ChangeCase Name="UpperCaseFirstChar" Type="UpperCase"
BeginIndex="0" Count="1"/>
  <ChangeCase Name="UpperCaseAll" Type="UpperCase"
BeginIndex="0"/>
  <ChangeCase Name="UpperCaseSixthLetter" Type="UpperCase"
BeginIndex="6" Count="1"/>
  <ChangeCase Name="UpperCaseEighthLetter" Type="UpperCase"
BeginIndex="8" Count="1"/>
  <Remove Name="RemoveNew" String="/jpetstore/shop/new"/>
  <Remove Name="RemoveSHTML" String=".shtml"/>
  <Replace Name="ReplaceNewWithConfirm" Old="/jpetstore/shop/new"
New="Confirm"/>
  <Alias Name="RelateLettersToCategory">
    <Pair Name="FI" Alias="Fish"/>
    <Pair Name="K9" Alias="Dogs"/>
    <Pair Name="RP" Alias="Reptiles"/>
    <Pair Name="FL" Alias="Cats"/>
    <Pair Name="AV" Alias="Birds"/>
  </Alias>
  <Alias Name="RelateProductIdToProductName">
    <Pair Name="FI-FW-01" Alias=""Koi""/>
    <Pair Name="FI-FW-02" Alias=""Goldfish""/>
    <Pair Name="FI-SW-01" Alias=""Angelfish""/>
    <Pair Name="FI-SW-02" Alias=""Tiger Shark""/>
    <Pair Name="K9-BD-01" Alias=""Bulldog""/>
    <Pair Name="K9-CW-01" Alias=""Chihuahua""/>

```

```
<Pair Name="K9-DL-01" Alias=""Dalmation""/>
<Pair Name="K9-PO-02" Alias=""Poodle""/>
<Pair Name="K9-RT-01" Alias=""Golden Retriever""/>
<Pair Name="K9-RT-02" Alias=""Labrador Retriever""/>
<Pair Name="RP-LI-02" Alias=""Iguana""/>
<Pair Name="RP-SN-01" Alias=""Rattlesnake""/>
<Pair Name="FL-DLH-02" Alias=""Persian""/>
<Pair Name="FL-DSH-01" Alias=""Manx""/>
<Pair Name="AV-CB-01" Alias=""Amazon Parrot""/>
<Pair Name="AV-SB-02" Alias=""Finch""/>
</Alias>
<Alias Name="RelatItemNameToItemDesc">
  <Pair Name="EST-28" Alias=""Adult Female Golden Retriever""/>
  <Pair Name="EST-27" Alias=""Adult Female Chihuahua""/>
  <Pair Name="EST-26" Alias=""Adult Male Chihuahua""/>
  <Pair Name="EST-25" Alias=""Adult Female Labrador Retriever""/>
  <Pair Name="EST-24" Alias=""Adult Male Labrador Retriever""/>
  <Pair Name="EST-23" Alias=""Adult Female Labrador Retriever""/>
  <Pair Name="EST-22" Alias=""Adult Male Labrador Retriever""/>
  <Pair Name="EST-21" Alias=""Adult Female Goldfish""/>
  <Pair Name="EST-20" Alias=""Adult Male Goldfish""/>
  <Pair Name="EST-19" Alias=""Adult Male Finch""/>
  <Pair Name="EST-18" Alias=""Adult Male Amazon Parrot""/>
  <Pair Name="EST-17" Alias=""Adult Male Persian""/>
  <Pair Name="EST-16" Alias=""Adult Female Persian""/>
  <Pair Name="EST-15" Alias=""With tail Manx""/>
  <Pair Name="EST-14" Alias=""Tailless Manx""/>
  <Pair Name="EST-13" Alias=""Green Adult Iguana""/>
  <Pair Name="EST-12" Alias=""Rattleless Rattlesnake""/>
  <Pair Name="EST-11" Alias=""Venomless Rattlesnake""/>
  <Pair Name="EST-10" Alias=""Spotted Adult Female Dalmation""/>
  <Pair Name="EST-9" Alias=""Spotless Male Puppy Dalmation""/>
  <Pair Name="EST-8" Alias=""Male Puppy Poodle""/>
  <Pair Name="EST-7" Alias=""Female Puppy Bulldog""/>
  <Pair Name="EST-6" Alias=""Male Adult Bulldog""/>
  <Pair Name="EST-5" Alias=""Spotless Koi""/>
  <Pair Name="EST-4" Alias=""Spotted Koi""/>
  <Pair Name="EST-3" Alias=""Toothless Tiger Shark""/>
  <Pair Name="EST-2" Alias=""Small Angelfish""/>

```

```

    <Pair Name="EST-1" Alias=""Large Angelfish""/>
  </Alias>
</Formating>
<Rules DefaultDelimiter=" ">
  <Rule Priority="0" Name="Welcome">
    <Path Name="/jpetstore/">
      <Formatter Index="1">RenameToWelcome</Formatter>
    </Path>
  </Rule>
  <Rule Priority="1" Name="Welcome">
    <Path Name="/jpetstore/index.html">
      <Formatter Index="1">RenameToWelcome</Formatter>
    </Path>
  </Rule>
  <Rule Priority="2" Name="Sign In">
    <Path Name="/jpetstore/shop/signonForm.shtml">
      <Formatter Index="1">RenameToSignIn</Formatter>
    </Path>
  </Rule>
  <Rule Priority="3" Name="Store Entrance">
    <Path Name="/jpetstore/shop/signon.shtml">
      <Formatter Index="1">RenameToStoreEntrance</Formatter>
    </Path>
  </Rule>
  <Rule Priority="4" Name="Category [any]">
    <Path Name="/jpetstore/shop/viewCategory.shtml"/>
    <Parameters>
      <Param Key="categoryId" Value=""*"" CompareMethod="WildCard">
        <Formatter Index="1">UpperCaseAll AppendCategory</Formatter>
      </Param>
    </Parameters>
  </Rule>
  <Rule Priority="5" Name="Edit Account">
    <Path Name="/jpetstore/shop/editAccountForm.shtml">
      <Formatter Index="1">RenameToEditAccount</Formatter>
    </Path>
  </Rule>
  <Rule Priority="6" Name="Any Product [product]">

```

```

        <Path Name="/jpetstore/shop/v*Product.shtml"
CompareMethod="Wildcard"/>
        <Parameters>
            <Param Key="productId" Value="*" CompareMethod="Wildcard">
                <Formatter Index="1">ExtractTwoFirstLetters
RelateLettersToCategory</Formatter>
                <Formatter Index="2">RenameToProduct</Formatter>
                <Formatter Index="3">RelateProductIdToProductName</Formatter>
            </Param>
        </Parameters>
    </Rule>
    <Rule Priority="7" Name="Item [any]">
        <Path Name="/jpetstore/shop/viewItem.shtml">
            <Formatter Index="1">ExtractItem UpperCaseFirstChar</Formatter>
        </Path>
        <Parameters>
            <Param Key="itemId" Value="*" CompareMethod="Wildcard">
                <Formatter Index="2">RelateItemNameToItemDesc</Formatter>
            </Param>
        </Parameters>
    </Rule>
    <Rule Priority="8" Name="Add Item [any] To Cart">
        <Path Name="/jpetstore/shop/addItemToCart.shtml"/>
        <Parameters>
            <Param Key="workingItemId" Value="*" CompareMethod="Wildcard">
                <Formatter Index="1">RelateItemNameToItemDesc
AppendAddItemPrefix AppendToCartSuffix</Formatter>
            </Param>
        </Parameters>
    </Rule>
    <Rule Priority="9" Name="Update Cart">
        <Path Name="/jpetstore/shop/updateCartQuantities.shtml">
            <Formatter Index="1">ExtractUpdate
UpperCaseFirstChar</Formatter>
            <Formatter Index="2">ExtractCart UpperCaseFirstChar</Formatter>
            <Formatter Index="3">ExtractQuantities
UpperCaseFirstChar</Formatter>
        </Path>
    </Rule>

```

```

<Rule Priority="10" Name="Remove Item [any] From Cart">
  <Path Name="/jpetstore/shop/removetitemFromCart.shtml"/>
  <Parameters>
    <Param Key="workingItemId" Value="*" CompareMethod="Wildcard">
      <Formatter Index="1">RelateItemNameToItemDesc
AppendRemovetitemPrefix AppendFromCartSuffix</Formatter>
    </Param>
  </Parameters>
</Rule>
<Rule Priority="11" Name="Check Out">
  <Path Name="/jpetstore/shop/checkout.shtml">
    <Formatter Index="1">RenameToCheckOut</Formatter>
  </Path>
</Rule>
<Rule Priority="12" Name="Order Form">
  <Path Name="/jpetstore/shop/newOrderForm.shtml">
    <Formatter Index="1">RemoveNew InsertSpaceAfterOrder
RemoveSHTML UpperCaseFirstChar UpperCaseSixthLetter</Formatter>
  </Path>
</Rule>
<Rule Priority="13" Name="Order Submitted">
  <Path Name="/jpetstore/shop/newOrder.shtml">
    <Formatter Index="1">RenameToOrderSubmitted</Formatter>
  </Path>
  <Parameters>
    <Param Key="confirmed" Value="true"/>
  </Parameters>
</Rule>
<Rule Priority="14" Name="Order Not Submitted">
  <Path Name="/jpetstore/shop/newOrder.shtml">
    <Formatter Index="1">RenameToOrderSubmitted
InsertNotAfterOrder</Formatter>
  </Path>
  <Parameters>
    <Param Key="confirmed" Value="false"/>
  </Parameters>
</Rule>
<Rule Priority="15" Name="Confirm Order">
  <Path Name="/jpetstore/shop/newOrder.shtml">

```

```

        <Formatter Index="1">ReplaceNewWithConfirm
InsertSpaceAfterConfirm RemoveSHTML UpperCaseEighthLetter</Formatter>
    </Path>
</Rule>
<Rule Priority="16" Name="Sign Out">
    <Path Name="/jpetstore/shop/signoff.shtml">
        <Formatter Index="1">RenameToSignOut</Formatter>
    </Path>
</Rule>
</Rules>
</Meaningful_Pages>

```

Examples of Meaningful Names for URLs

URL	Meaningful Name
http://pluto:8080/jpetstore/	Welcome
http://pluto:8080/jpetstore/index.html	Welcome
http://pluto:8080/jpetstore/shop/signonForm.shtml	Sign In
http://pluto:8080/jpetstore/shop/signon.shtml	Store Entrance
http://pluto:8080/jpetstore/shop/viewCategory.shtml?categoryId=CATS	Category CATS
http://pluto:8080/jpetstore/shop/editAccountForm.shtml	Edit Account
http://pluto:8080/jpetstore/shop/viewProduct.shtml?productId=FI-FW-01	Fish Product 'Koi' (FI=Fish, K9=Dogs, RP=Reptiles, FL=Cats, AV=Birds)
http://pluto:8080/jpetstore/shop/viewItem.shtml?itemId=EST-4	Item 'Spotted Koi'
http://pluto:8080/jpetstore/shop/addItemToCart.shtml?workingItemId=EST-6	Add Item 'Male Adult Bulldog' to Cart

URL	Meaningful Name
http://pluto:8080/jpetstore/shop/updateCartQuantities.shtml	Update Cart Quantities
http://pluto:8080/jpetstore/shop/removeItemFromCart.shtml?workingItemId=EST-6	Remove Item 'Male Adult Bulldog' from Cart
http://pluto:8080/jpetstore/shop/checkout.shtml	Check Out
http://pluto:8080/jpetstore/shop/newOrderForm.shtml	Order Form
http://pluto:8080/jpetstore/shop/newOrder.shtml	Confirm Order
http://pluto:8080/jpetstore/shop/newOrder.shtml?confirmed=true	Order Submitted
http://pluto:8080/jpetstore/shop/newOrder.shtml?confirmed=false	Order Not Submitted
http://pluto:8080/jpetstore/shop/signoff.shtml	Signed Out

Validating Meaningful Name XML Files

You can validate a meaningful name XML file against a predefined XML schema to ensure that the structure and format of the file are valid. The validation is made using the xerces-j 2.8.0 XML parser.

The schema file against which the XML file is validated is:

`\<Real User Monitor root directory>\conf\resolver\meaningfulpages.xsd`

To validate a meaningful XML file:

- 1 Insert the following line at the beginning of the XML file:

```
<Meaningful_Pages xmlns:xsi="http://www.w3.org/2001/XMLSchema-instance" xsi:noNamespaceSchemaLocation="./meaningfulpages.xsd"
```

Note: If this line is omitted from the XML file and the validation is run, a message that the validation was successful will be displayed, but no validation will actually have been done.

- 2** Access the JMX console by choosing **JMX Console** from the Configuration dropdown menu in the Real User Monitor Web console, or by using the following URL in your Web browser:

`http://<Real User Monitor engine machine name>:8180/jmx-console`
- 3** In the JMX Agent View, scroll down to the **RUM.modules** section and click **service=ResolverMeaningfulPagesConfig**.
- 4** In the **validateConfiguration** option, enter the full name of the XML file you want to validate and click **Invoke**. The XML file is validated against the predefined schema file.
- 5** Any errors encountered are displayed, or a message that the validation was successful is displayed.

Note: The Formatting tags must be included in the XML file in a specific order (for details, see “Formatting Tags” on page 111). If the Formatting tags are not in the correct order, a validation error message is displayed, but no indication of the order mismatch is given.

Adding and Deleting Meaningful Name XML Files

If you add or delete a meaningful name XML file in an application in Monitor Administration and would like to apply the change immediately, you can force Mercury Real User Monitor to reread the Monitor Administration configuration. For information on configuring applications for monitoring, see “Configuring Applications” in *End User Management Data Collector Configuration*.

To force Mercury Real User Monitor to reread the Monitor Administration configuration:

- 1** Access the Real User Monitor Web console (for details, see “Accessing the Real User Monitor Engine Web Console” on page 52).
- 2** From the **Configuration** menu, select **Engine Configuration Per Data Type**. The Engine Configuration Page opens.
- 3** Click the **Sync All Configuration** button to force the Real User Monitor engine to reload the Real User Monitor configuration from Mercury Business Availability Center.

Changing Meaningful Name XML Files

If you change the content of an existing meaningful page XML file that is used by an application, you must force Mercury Real User Monitor to reload the configuration for the specific application. For information on configuring applications for monitoring, see “Configuring Applications” in *End User Management Data Collector Configuration*.

To force Mercury Real User Monitor to reload the configuration for an application:

- 1** Access the JMX console by choosing **JMX Console** from the Configuration dropdown menu in the Real User Monitor Web console, or by using the following URL in your Web browser:

`http://<Real User Monitor engine machine name>:8180/jmx-console`
- 2** In the JMX Agent View, scroll down to the **RUM.modules** section and click **service=ResolverMeaningfulPagesConfig**.
- 3** In the **reloadConfiguration** option, enter the application name (as defined in Monitor Administration) by which the XML file is being used and click **Invoke**. The application’s configuration is reloaded in Mercury Real User Monitor.

Note: To reload the configuration for all applications, click **Invoke** for the **reloadCurrentConfigurations** option.

Viewing Meaningful Page Statistics

You can view a table showing statistical information for each application that uses a meaningful page XML file.

To view meaningful page statistics:

- 1** Access the JMX console by choosing **JMX Console** from the Configuration dropdown menu in the Real User Monitor Web console, or by using the following URL in your Web browser:

http://<Real User Monitor engine machine name>:8180/jmx-console
- 2** In the JMX Agent View, scroll down to the **RUM.modules** section and click **service=ResolverMeaningfulPagesConfig**.
- 3** In the **viewStatistics** option, click **Invoke**. The Meaningful Pages Statistics table opens, showing the following data:
 - ▶ **Application name.** The name of the application as defined in Monitor Administration. (For details on configuring applications in Monitor Administration, see “Configuring Applications” in *End User Management Data Collector Configuration*.)
 - ▶ **Configuration file name.** The name of the meaningful page XML file used by the application.
 - ▶ **Handled pages.** The total number of pages monitored in the application that were submitted to the meaningful pages module.
 - ▶ **Successful pages.** The total number of pages that were successfully processed by the meaningful pages module.
 - ▶ **Unmatched pages.** The total number of pages successfully processed by the meaningful pages module, but for which no meaningful name was assigned as no match was found.
 - ▶ **Failed pages.** The total number of pages that were not successfully processed by the meaningful pages module.

Unifying Frames

By default, the Real User Monitor probe reports each frame as a separate page for statistical purposes. However, when replaying a session in the Session Analyzer report, the pages of some frames will be listed as sub components of other pages in the hierarchal tree and will be displayed accordingly.

Real User Monitor uses a default configuration that contains the rules for determining if a page is considered as a parent or a child page. You can change the default settings and can also create new settings for specific pages.

You configure frames to be unified by Real User Monitor in the **frame_unification.xml** file on the Real User Monitor engine machine.

To change the default settings for frame unification:

- 1 Edit the **MercuryRUM\conf\configurationmanager\frame_unification.xml** file on the Real User Monitor engine machine.
- 2 Locate the **DefaultPage** entry, which is as follows:

```
<DefaultPage>
  <TimeoutMS>500</TimeoutMS>
  <InnerFrames maxInnerFrames="-1" />
  <CanBeInnerFrame>true</CanBeInnerFrame>
  <MatchInnerFramesReferrer>true</MatchInnerFramesReferrer>
</DefaultPage>
```

- 3 Change the settings for your system, where:
 - **TimeoutMS.** The amount of time it takes a frame to load after the previous frame has finished loading. Within this time, if the frame matches the other parameters, such as the referring URL, it will be considered as a child of the previous frame, otherwise it will be considered as a parent frame.
 - **InnerFrames maxInnerFrame.** The maximum number of children that a parent frame can contain. Use **-1** for an unlimited number.

- ▶ **CanBeInnerFrame.** Set to **true** to enable frames to be considered as children. Set to **false** to consider all frames as parents, unless specific page settings have been defined which are applicable to a frame.
 - ▶ **MatchInnerFramesReferrer.** Set to **true** to allow child frames to be matched to parent frames by URLs (if specific page settings have been configured), or **false** to use only the TimeoutMS setting to create child pages.
- 4 Save the file and exit.

Note: There can be only one **DefaultPage** entry.

To create frame unification settings for specific pages:

- 1 Edit the `MercuryRUM\conf\configurationmanager\frame_unification.xml` file on the Real User Monitor engine machine.
- 2 After the **DefaultPage** entry, create a new **Page** section in the following format:

```
<Page>
  <Pattern>http://www.host.com/.*/</Pattern>
- <InnerFrames maxInnerFrames="3">
  <Pattern>http://www.host.com/inner1\..*/</Pattern>
  <Pattern>http://www.host.com/inner2.</Pattern>
</InnerFrames>
  <TimeoutMS>500</TimeoutMS>
  <CanBeInnerFrame>false</CanBeInnerFrame>
  <MatchInnerFramesReferrer>true</MatchInnerFramesReferrer>
</Page>
```

where:

- ▶ **Pattern.** A regular expression for the URL pattern to be matched when Real User Monitor determines if a frame is to be considered as a parent or child. The first **Pattern** setting at the top of the section determines if the rule is applicable for the frame being matched and is also used as the parent pattern for any matching children. Subsequent **Pattern** settings, within **InnerFrames**, are used to determine if the frame can be considered as a child.
 - ▶ **InnerFrames maxInnerFrame.** The maximum number of children that the parent frame can contain. Use **-1** for an unlimited number.
 - ▶ **TimeoutMS.** The amount of time it takes a frame to load after the previous frame has finished loading. Within this time, the frame will be considered as a child of the parent frame that matches the first **Pattern** setting, otherwise it will be considered as a parent frame itself.
 - ▶ **CanBeInnerFrame.** Set to **true** to enable a frame whose URL matches the first **Pattern** setting to be considered as a child, or **false** to consider all frames that match the first **Pattern** setting as parents.
 - ▶ **MatchInnerFramesReferrer.** Set to **true** to allow child frames to be matched to the parent frame by the URLs configured in the **Pattern** settings, or **false** to use only the **TimeoutMS** setting to create child pages.
- 3** Repeat step 2 to create additional page settings as required.
 - 4** Save the file and exit.

Note:

- ▶ If a page's URL matches the **Pattern** of more than one Page definition, the first matching Page definition in the file is applied.
 - ▶ Missing parameters in a Page definition section inherit the **DefaultPage** setting for that parameter.
-

8

Administering the MySQL Database

For Real User Monitor to work, it must be connected to a MySQL database that has been created and started.

This chapter describes:	On page:
Overview of the MySQL Database	141
Creating and Connecting to the MySQL Database	142
Starting and Stopping the MySQL Database	142
Maintaining the MySQL Database	143

Overview of the MySQL Database

The MySQL database is the Real User Monitor's data repository. The data that is stored in the MySQL database is data that is either not forwarded at all to Mercury Business Availability Center, or that is only sent on request.

Data that is not forwarded at all to Mercury Business Availability Center is Real User Monitor configuration data. Data that is sent to Mercury Business Availability Center on request is open session data and session click-stream data (data and snapshots of pages included in sessions). Click-stream data accounts for the majority of the data stored in the MySQL database.

The MySQL database can be installed on the same machine as the Real User Monitor engine or on its own machine. For system requirements for the MySQL database, see "Reviewing System Requirements" on page 17.

Creating and Connecting to the MySQL Database

The Real User Monitor engine MySQL database is created during the Real User Monitor engine installation process, if that option is selected. When the MySQL database is created during the installation process, the Real User Monitor engine is connected to it, and the MySQL database is started automatically. The MySQL database to which the Real User Monitor engine is connected must be started for the Real User Monitor engine to work.

You can create a new MySQL database schema and connect the Real User Monitor engine to it, or connect the Real User Monitor engine to a different, existing MySQL database completely, if required.

Note: The Real User Monitor engine can only be connected to one MySQL database.

To create schemas and connect to MySQL databases on a Real User Monitor Windows installation:

On the machine on which the Real User Monitor engine is installed, select **Start > Programs > Mercury Real User Monitor > Administration > RUM Configuration Tool**. The Real User Monitor Configuration tool starts. For details on working with the Real User Monitor Configuration tool, see step 12 on page 29 in “Installing the Mercury Real User Monitor Engine on a Windows Platform” on page 25.

Starting and Stopping the MySQL Database

When the MySQL database is created during Real User Monitor installation, it is started automatically as part of the process. You can start and stop the MySQL database manually if required.

To start the MySQL database on a Real User Monitor Windows installation:

On the machine on which the Real User Monitor engine is installed, select **Start > Programs > Mercury Real User Monitor > Administration > Database > Start Real User Monitor Database**.

To stop the MySQL database on a Real User Monitor Windows installation:

On the machine on which the Real User Monitor engine is installed, select **Start > Programs > Mercury Real User Monitor > Administration > Database > Stop Real User Monitor Database**.

Maintaining the MySQL Database

For details on maintaining the MySQL database, including strategies and procedures for backing up and restoring the database, refer to the Database Administration chapter in the MySQL Reference Manual on the MySQL Web site (<http://dev.mysql.com/doc/refman/5.0/en/database-administration.html>).

Purging MySQL Binary Log Files

The MySQL binary log contains all statements that updated data in the MySQL database.

The purpose of the binary log is to help update the database to the most current status during a restore operation, as it contains all updates made since the last backup. For details on MySQL binary log files and restoring databases, refer to the Database Administration chapter in the MySQL Reference Manual on the MySQL Web site (<http://dev.mysql.com/doc/refman/5.0/en/database-administration.html>).

Real User Monitor purges the MySQL binary log files on a daily basis, by deleting all the log files older than five days. You can change the default number of days for which to keep the MySQL binary log files.

To change the default number of days for which to keep MySQL binary log files:

- 1** Access the JMX console by choosing **JMX Console** from the Configuration dropdown menu in the Real User Monitor Web console, or by using the following URL in you Web browser:

`http://<Real User Monitor engine machine name>:8180/jmx-console`
- 2** In the JMX Agent View, scroll down to the **RUM.modules** section and click **service=MaintenanceDBConfigurationJMX**.

- 3 In the **MySQLBinaryLogsDaysCount** parameter, change the setting to the required number of days.
- 4 Click the **Apply Changes** button.

Purging Session Click-Stream Data

The majority of the data stored in the MySQL database is session click-stream data. This data comprises the details and snapshots of pages included in sessions and is sent to Mercury Business Availability Center on request.

Session click-stream data is kept in the MySQL database for a default period of 14 days, after which it is automatically purged from the database. The amount of time for which session click-stream data is stored in the MySQL database can be changed to any number of days between 7 and 100.

To change the period for which session click-stream data is stored in the database:

- 1 Access the JMX console by choosing **JMX Console** from the Configuration dropdown menu in the Real User Monitor Web console, or by using the following URL in you Web browser:
`http://<Real User Monitor engine machine name>:8180/jmx-console`
- 2 In the JMX Agent View, scroll down to the **RUM.modules** section and click **service=MaintenanceDBConfigurationJMX**.
- 3 In the **PurgingDaysCounter** parameter, change the setting to the required number of days (between 7 and 100).
- 4 Click the **Apply Changes** button.

Note: By increasing the number of days for which session click-stream data is stored, you may significantly increase the size of the database, which may necessitate additional disk capacity.

Index

A

- administration, Real User Monitor 50
- aggregation
 - Real User Monitor 102

C

- configuring the probe
 - Real User Monitor 45
- console (probe)
 - configuring for SSL 46

D

- diagnostic tools
 - Real User Monitor 77

E

- engine (Real User Monitor)
 - Windows start menu 50
 - Windows task bar icon 51
- engine administration
 - Real User Monitor 49
- engine configuration
 - Real User Monitor 49

H

- health (Real User Monitor components)
 - monitoring 55

I

- installation
 - Real User Monitor 14
 - Real User Monitor engine 25

- Real User Monitor engine on
 - Windows 25
- Real User Monitor probe 35, 37

J

- JMX console (Real User Monitor) 100
 - accessing 101
 - setting URL correlation parameters 105

M

- meaningful page name
 - rules tags 122
- meaningful page names
 - configuring for Real User Monitor 109
 - examples 132
 - formatting tags 111
 - sample XML file 126
- monitoring the health of Real User Monitor
 - components 55
- MySQL database (Real User Monitor) 141
 - connecting 142
 - creating 142
 - maintaining 143
 - overview 10
 - starting 142
 - stopping 142

P

- ports
 - Real User Monitor 13
- probe (Real User Monitor)
 - connecting 35
 - installing 35, 37
 - overview 10

Index

- starting 39
- stopping 39
- probe console
 - configuring for SSL 46

R

- Real User Monitor
 - administering the MySQL database
 - 141
 - administration 50
 - communications 13
 - configuring aggregation 102
 - configuring the probe 45
 - connecting the probe 35
 - connecting to the MySQL database
 - 142
 - correlating session ID parameters 108
 - creating the MySQL database 142
 - diagnostic tools 77
 - engine administration 49
 - engine configuration 49
 - installation process 14
 - installing engine 25
 - installing engine on Windows 25
 - installing probe 35, 37
 - maintaining the MySQL database 143
 - meaningful page names 109
 - ports 13
 - starting the MySQL database 142
 - starting the probe 39
 - stopping the MySQL database 142
 - stopping the probe 39
 - unifying frames 137
 - uninstalling 41
 - uninstalling on Windows 41
 - URL correlation parameters 105
 - using the JMX console 100
 - using the Web Console 52
 - Web console 68
- Real User Monitor components
 - monitoring health 55
- Real User Monitor engine
 - installing 25
 - installing on Windows 25
 - overview 10

- system requirements 18
- uninstalling 41
- uninstalling on Windows 41
- Windows start menu 50
- Windows task bar icon 51
- Real User Monitor JMX console
 - setting URL correlation parameters
 - 105
- Real User Monitor probe
 - configuring 45
 - system requirements 19
- real user monitor probe
 - limiting webconsole resources 46
- Real User Monitor repository
 - system requirements 18

S

- session ID parameters
 - correlation 108
- SSL
 - configuring the probe console 46
- starting the Real User Monitor probe 39
- stopping the Real User Monitor probe 39
- system requirements
 - Real User Monitor engine 18
 - Real User Monitor probe 19
 - Real User Monitor repository 18

U

- unifying frames
 - configuring for Real User Monitor 137
- uninstalling
 - Real User Monitor engine 41
 - Real User Monitor engine on Windows 41
- URL correlation parameters
 - Real User Monitor 105
 - setting via the JMX console 102, 105

W

- Web console (Real User Monitor) 52
 - configuration and settings 68

- webconsole
 - limiting resources on real user
 - monitor probe 46
- Windows start menu, Real User Monitor
 - engine 50
- Windows task bar icon, Real User Monitor
 - engine 51

