

# Application Smart Plug-ins Technical White Paper

## Instance-based Licensing Support



Version 1.0

Legal Notices .....	2
Warranty .....	2
Restricted Rights Legend .....	2
Copyright Notices .....	2
Trademark Notices .....	2
Abstract.....	3
Licensing Model .....	3
Tier-based Licenses .....	3
Instance-based Licenses .....	3
Migration License .....	3
Target Connector Licenses .....	3
Difference between Tier-based and Instance-based Licensing Models .....	4
Migration from Tier-based to Instance-based Licensing Model .....	4
License Installation .....	5
Requesting New License Using AutoPass Interface .....	5
Requesting New License Using Webware Tool .....	6
Installing License Key Using AutoPass Interface.....	7
Application SPI Patches Supporting Instance-based Licensing .....	10
Table: 1 .....	10
License Reports.....	10
License Supporting Tools .....	12
ovolicense .....	12
omlicreporter(.bat) .....	12
OMLicenseReporter.jar.....	12
Ovodetect.....	12
Licensing Scenarios.....	13
FAQ.....	17
References .....	20

# Legal Notices

## Warranty

The only warranties for HP products and services are set forth in the express warranty statements accompanying such products and services. Nothing herein should be construed as constituting an additional warranty. HP shall not be liable for technical or editorial errors or omissions contained herein.

The information contained herein is subject to change without notice.

## Restricted Rights Legend

Confidential computer software. Valid license from HP required for possession, use or copying. Consistent with FAR 12.211 and 12.212, Commercial Computer Software, Computer Software Documentation, and Technical Data for Commercial Items are licensed to the U.S. Government under vendor's standard commercial license.

## Copyright Notices

© Copyright 1999–2011 Hewlett-Packard Development Company, L.P.

## Trademark Notices

HP-UX Release 10.20 and later and HP-UX Release 11.00 and later (in both 32 and 64-bit configurations) on all HP 9000 computers are Open Group UNIX 95 branded products. Microsoft®, Windows®, Windows NT®, Windows® XP, and Windows Vista® are U.S. registered trademarks of Microsoft Corporation.

Java and Oracle are registered trademarks of Oracle and/or its affiliates.

UNIX® is a registered trademark of The Open Group.

## Abstract

This whitepaper explains the Instance-based licensing model. The Application Smart Plug-ins (SPIs) with the HP Operations Manager (HPOM) for Windows 09.00 (SPI DVD 2010.3) and HPOM for UNIX patch releases support the Instance-based licensing model. For more information about the patches supporting this licensing model, see [Table 1](#). This document provides information on the differences between the Tier-based and Instance-based licensing models. It also contains a Frequently Asked Questions (FAQ) section to address questions that may arise when implementing this licensing model.

## Licensing Model

This section provides an overview of the various licensing models that an Application SPI supports. The common license categories are as follows:

- Tier-based licenses
- Instance-based licenses
- Migration licenses
- Target Connector licenses

### Tier-based Licenses

In Tier-based licensing model, the Application SPI licensing strategy depends on the rating of the node. An agent node can be rated from tier-0 to tier-5. Actual HPOM products will still recognize the Tier-based agent licenses, but you cannot order the licenses any longer.

### Instance-based Licenses

Application SPIs support Instance-based licensing with the release of the HPOM for Windows 9.1 (SPI DVD 2010.3) and SPI patches—HPOM for UNIX 09.xx. In this licensing model, Application SPIs detect the number of application instances currently configured for monitoring. The License Report for the application instances is generated on the HPOM server, based on the evaluated number of application instances.

For example, if SPI for Oracle is configured to monitor three Oracle instances for a managed node, the License Report validates the use of up to three Oracle Instance-based licenses by the managed node. It also identifies if there are more than three instances being monitored.

### Migration Licenses

Migration licenses are provided to users migrating from the Tier-based licensing model to the Instance-based licensing model. These licenses are provided on request, for the existing environment, depending on the number and type of Tier-based licenses already in use. So, for any Application SPI, the Migration and Tier-based licenses cannot coexist. When a Migration license is installed for an Application SPI, the Tier-based license count becomes zero for that SPI.

### Target Connector Licenses

Target connector licenses are required when Operations agent is not installed on a node and the user wants to monitor the application remotely. When this license is provided, the user can monitor the application remotely from the node where agent is installed.

Only the following SPIs support the functionality:

- SPI for Oracle
- SPI for Informix
- SPI for Sybase
- SPI for SAP
- SPI for WebSphere Application Server
- SPI for Oracle WebLogic Server
- SPI for JBoss Application Server

## Difference between Tier-based and Instance-based Licensing Models

The following table lists the differences between the Tier-based and Instance-based licensing models for Application SPIs.

<b>Tier-based License</b>	<b>Instance-based License</b>
The SPI license depends on the tier the node belongs to.	SPI license depends on the number of application instances currently monitored by the SPI.
SPI license calculation rule depends on the CPU count and therefore, the SPI registration XML file has calculation rule based on the CPU count.	SPI license calculation depends on application instances currently monitored by the SPI and therefore, the SPI registration XML file has calculation rule based on Instances.
This is the old license strategy and is still recognized by HPOM products. It is not available for new orders.	This is a new license strategy and is available for new orders.
The License Report does not contain information about the number of instances currently monitored by Application SPIs on any managed node.	The deciding factor for the number of licenses required is the number of instances currently monitored by Application SPIs on a managed node. This information is available in the License Report.

## Migration from Tier-based to Instance-based Licensing Model

The one-to-one mapping from Tier-based to Instance-based licensing model is available to users who want to migrate from the old to the new licensing model.

The following table shows a sample mapping.

Existing Tier Part Number	Existing Tier Part Name	New Migration SKU	Migration Instance Part Name
TA148AAE	HP Ops SPI Oracle Tier 1 NP FO SW E-LTU	TB816AAE	HP SPI 2 Oracle DB I NL NP FO Mg E-LTU
TA148AA	HP Ops SPI Oracle Tier 1 NP FO SW LTU	TB816AAE	HP SPI 2 Oracle DB I NL NP FO Mg E-LTU
TA147AAE	HP Ops SPI Oracle Tier 2 NP FO SW E-LTU	TB817AAE	HP SPI 3 Oracle DB I NL NP FO Mg E-LTU
TA147AA	HP Ops SPI Oracle Tier 2 NP FO SW LTU	TB817AAE	HP SPI 3 Oracle DB I NL NP FO Mg E-LTU

If a user has the Tier Part Number as TA148AAE, then the new part number is TB816AAE. In the preceding sample mapping, Oracle Tier 1 Non-Production Failover license is mapped to two Oracle Instance-based Node Locked Non-Production Failover Migration licenses. For more information about the mapping for all types of licenses, contact HP Account team.

## License Installation

This section explains the steps to download and install the Instance-based licenses on the HPOM server. You can request for new licenses by using the following:

- [AutoPass Interface](#)
- [Webware tool](#)

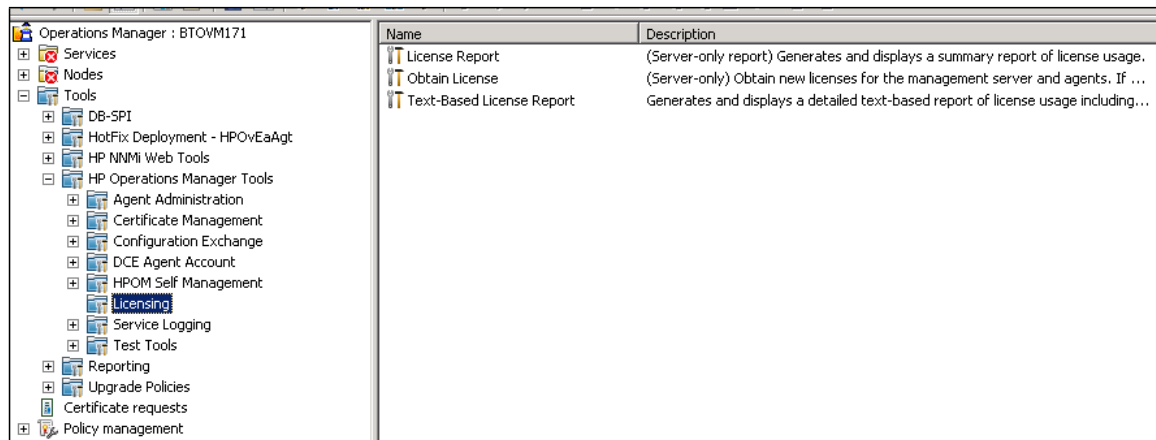
### Requesting New License Using AutoPass Interface

The section describes the steps to request for a new license, using the AutoPass interface.

#### Starting AutoPass

To access the AutoPass interface from the HPOM Windows management server, follow these steps:

1. Open the HPOM console and select **Tools** → **HP Operations Manager Tools** → **Licensing**. The right pane shows the Licensing tools.



2. Double-click **Obtain License**. A dialog box opens.
3. Select the required component and click **OK**.  
The AutoPass interface opens.

To access the AutoPass interface from the HPOM UNIX management server, follow these steps:

1. Log on to the HPOM Server.
2. Set the JAVA\_HOME and DISPLAY parameters, using the following commands:  

```
export JAVA_HOME=/opt/OV/nonOV/jre/lib  
export DISPLAY=<System IP Address>:0.0
```
3. Run the ovolicense command.  

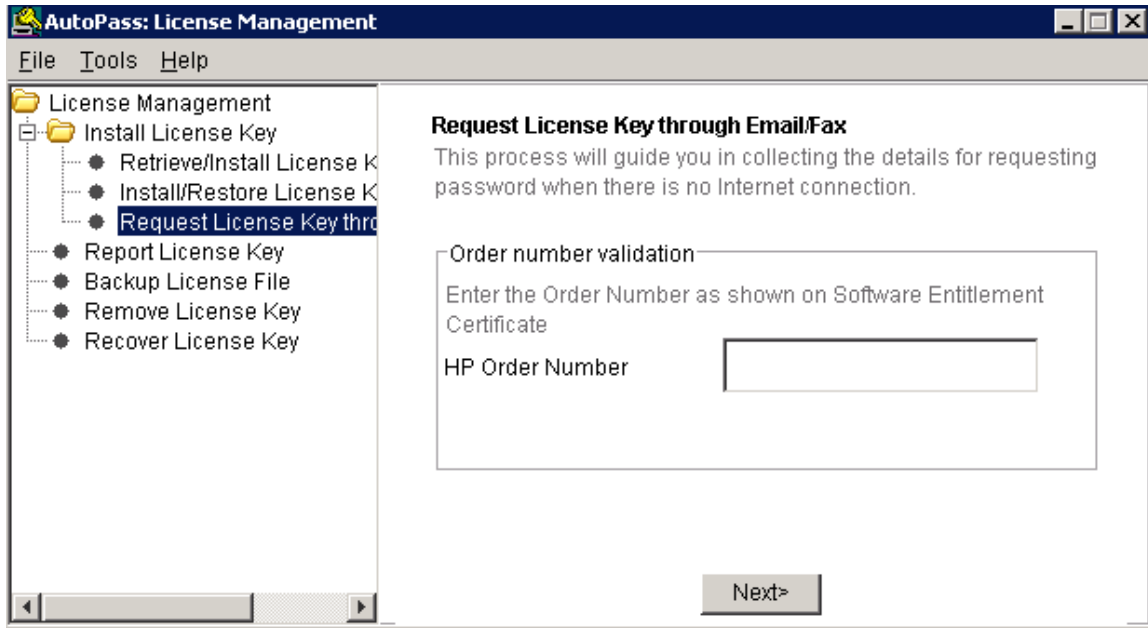
```
/opt/OV/ovlicense -g a <SPI category name>
```

#### Requesting License

1. Select **License Management** → **Install License Key** → **Request License Key**

**through Email/Fax.**

The *Request License Key through Email/Fax* window opens.



2. Type the Order number that is provided on your software certificate, in the *HP Order Number field*, and click **Next**.
3. Select the product number to install the license and specify the required quantity in the *LTU* field.
4. Click **Next** to continue.
5. Type the required License requestor information and click **Next**.
6. Type the License owner information and save the information summary.
7. Click **Save** in the *Password center information* screen and send the information to the details specified in the screen.

### Requesting New License Using Webware Tool

1. Go to <https://webware.hp.com> site to obtain a permanent license using the Webware tool. If you are not a registered user, register and log on.
2. Select **Generate New Licenses**.
3. Type the Order number that is provided on your software certificate, in the *Order Number* field, and click **Next**. The Product Selection window opens.
4. Select the product number to install the license and click **Next**.

Select product	Product number	Product name	Product version	Quantity available
<input type="checkbox"/>	Product family: Operations Management			
<input checked="" type="checkbox"/>	BB169ZA	HP Operations Target Connector for Oracle DB SW LTU	8.0	500
<input checked="" type="checkbox"/>	BB169ZAE	HP Operations Target Connector for Oracle DB SW E-LTU	8.0	500
<input type="checkbox"/>	BB170ZA	HP Operations Target Connector for Sybase DB SW LTU	8.0	500

5. In the *License Redemption* page, type your email address in the *Send copies to* field.

6. Type the required number of licenses in the *Quantity* field.
7. Type the IP address of the HPOM server in the *IP address* field.

Select the license owner and delivery options. If you have an existing SAID, please provide it as it will help expedite HP's creation of your support contract.

License owner\*  [More info](#)

Send copies to  (email@address1, email@address2, ...etc) [More info](#)

---

**BB169ZA - HP Operations Target Connector for Oracle DB SW LTU**

Product version	8.0 <a href="#">More info</a>
Quantity*	<input type="text"/> <a href="#">More info</a> (Quantity available: 500)
IP address*	<input type="text"/> <a href="#">More info</a>

---

**BB169ZAE - HP Operations Target Connector for Oracle DB SW E-LTU**

Product version	8.0 <a href="#">More info</a>
Quantity*	<input type="text"/> <a href="#">More info</a> (Quantity available: 500)
IP address*	<input type="text"/> <a href="#">More info</a>

**Note:** The license downloaded is a Node Locked License and is valid only for the IP address that you specify. In case of a cluster system, the IP address is the virtual cluster IP address and for standalone systems, it is the IP address of the main IP interface. If the specified IP address is incorrect, it may not report any issue while installing the license, but it does not show the installed license in the HPOM License Report.

8. Click **Next**.  
The *Transaction summary* page opens listing the details of the transaction, including the order number and email notification address.
9. Read the details and click **Next**.  
The *License Certificate* page opens showing the License certificate with the keys. You can save the keys on this page itself. An email is sent to you with the license information.
10. Save the file attached in the email on your system.

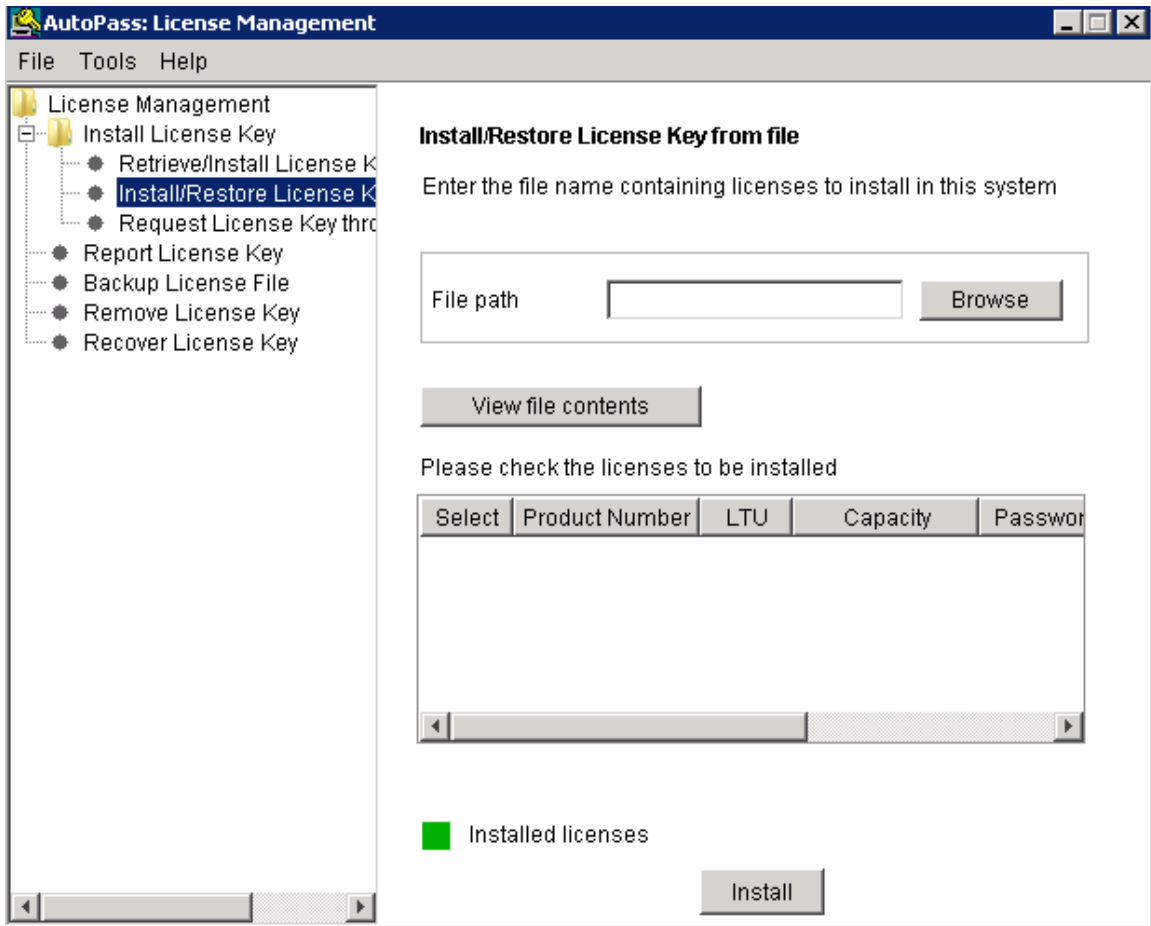
### Installing License Key Using AutoPass Interface

To install the obtained license key, using the AutoPass interface, follow these steps:

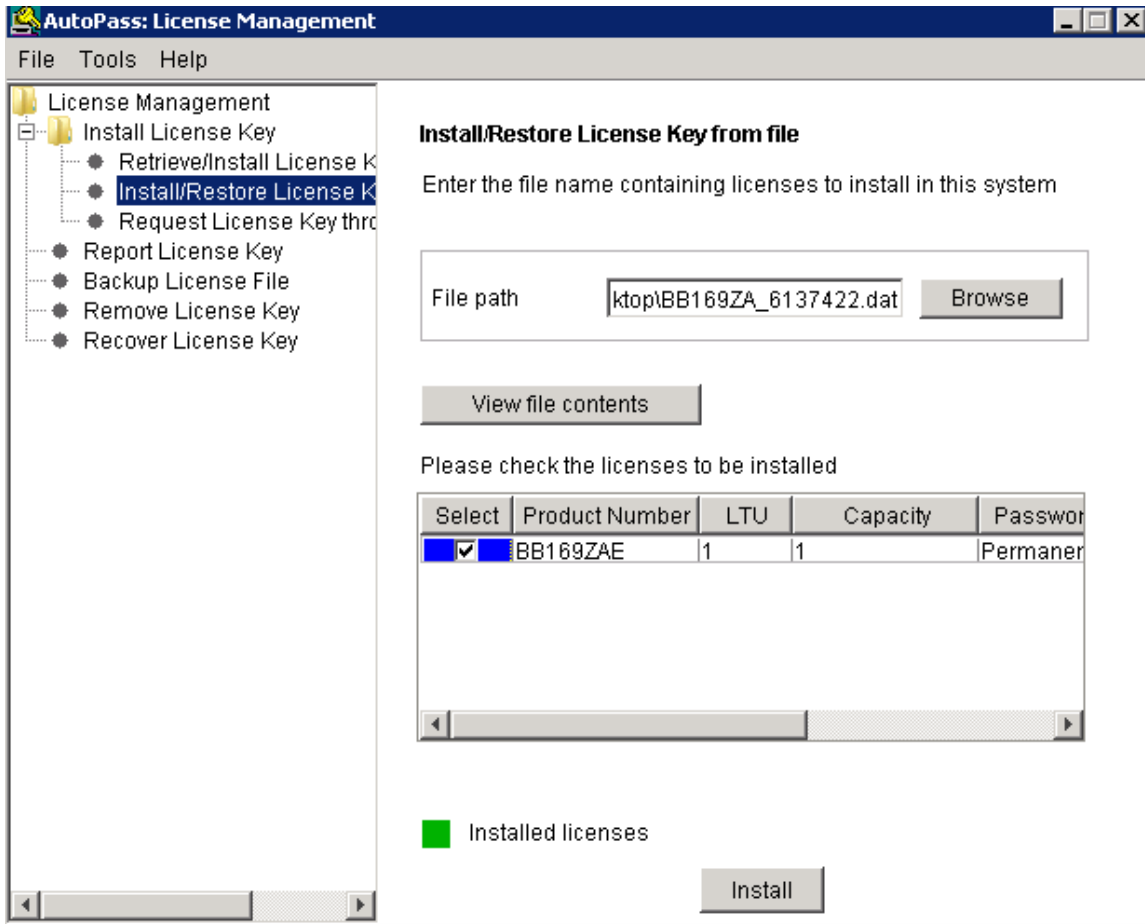
- a. Open the AutoPass interface.
- b. Select **License Management** → **Install License Key** → **Install/Restore License Key from file**.

The *Install/Restore License Key from file* window opens.



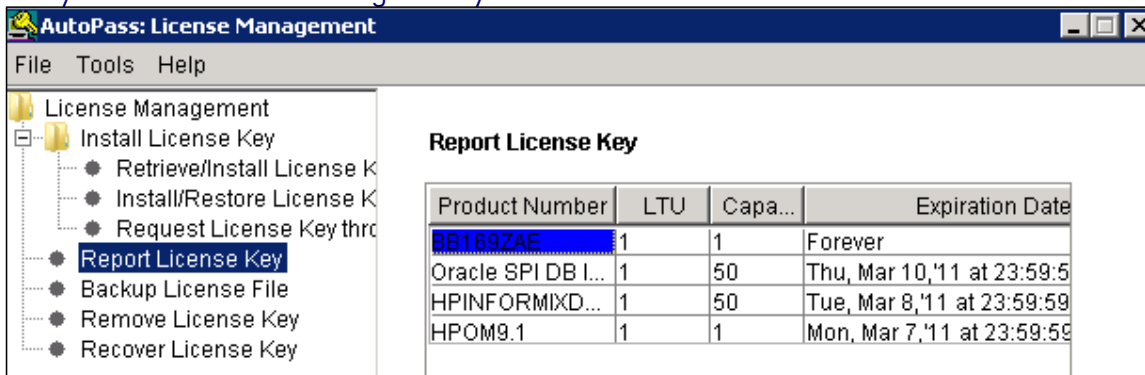


- c. Browse to the location where you saved the license file.
- d. Click **View file contents**.  
The page shows the licenses details.



- e. Select the check box corresponding to the license you want to install and click **Install**.

**Note:** The system does not prompt after successful installation. To view the License Report, select **License Management** → **Report License Key**. The right pane shows the License Report, listing the details of the installed license. The Report License Key feature reports all license passwords, irrespective of the validity. You can use the HPOM License report to verify whether the newly installed licenses are recognized by HPOM.



# Application SPI Patches Supporting Instance-based Licensing

The following table lists the Application SPIs and the corresponding SPI patches that support Instance-based licensing with HPOM for Windows and UNIX 09.00.

Table: 1

Product	Version	Patch IDs			
		HP-UX	Linux	Solaris	Windows
HPORASPI	12.04	PHSS_41327	OML_00021	ITOSOL_00738	OMW_00084
HPSQLSPI	12.04	PHSS_41328	OML_00022	ITOSOL_00739	OMW_00085
HPSYBASEDBSPI	12.04	PHSS_41329	OML_00023	ITOSOL_00740	OMW_00086
HPINFORMIXDBSPI	12.04	PHSS_41330	OML_00024	ITOSOL_00741	OMW_00087
HPWEBSPHERESPI	07.04	PHSS_41324	OML_00019	ITOSOL_00736	OMW_00082
HPWEBLOGICSPI	07.04	PHSS_41320	OML_00018	ITOSOL_00735	OMW_00081
HPOASSPI	07.04	PHSS_41325	OML_00020	ITOSOL_00737	OMW_00083
HPADSPI	07.06	PHSS_41318	OML_00017	ITOSOL_00734	OMW_00079
HPEXCHANGESPI	13.08	PHSS_41317	OML_00016	ITOSOL_00733	OMW_00078
HPMSESERVERDBSPI	08.01	n/a	n/a	n/a	OMW_00080
HPSAPSPI	12.03	PHSS_41433	OML_00031	ITOSOL_00744	OMW_00088

**Note:** HPOM for Windows 09.00 (SPIDVD 2010.3) also supports Instance-based licensing.

## License Reports

This section describes the License Report changes after you install new licenses on an HPOM server.

**Note:** SPI for Oracle report is shown as a sample report. See the highlighted area in each figure to understand the scenarios better. In an actual report, you get the license information for various applications installed, including the HPOM management server license.

**Scenario 1: Installing SPIs from SPIDVD 2010.3:** For all Application SPIs, 50 Instant-On licenses are available with 60 days validity. The following two reports are available with the new Instance-based licensing for HPOM for Windows 09.00 and UNIX 09.xx:

- HP Operations Manager Feature License Report
- HP Operations Manager License Password Report

The following figure shows the HP Operations Manager Feature License Report.

HP Operations Manager Feature License Report				
HP Operations Manager Server Information				
Product Name:	HP Operations Manager for Windows			
Product Version:	Management Server : A.09.00			
Patches:				
Management Server Name:	btovm171			
Report Creation Time:	Thursday, February 10, 2011 5:10:32 PM			
Component Name	Installed Licenses	Needed Licenses	License Status	Plugin-ID
Other Component Features				
ORASPI				
HP Operations Smart Plug-in for Oracle	50	0	OK	oraspi
HP Operations Smart Plug-in for Oracle for remote monitoring	50	0	OK	oraspiremote

The following figure shows the HP Operations Manager License Password Report.

HP Operations Manager License Password Report			
HP Operations Manager Server Information			
Product Name:	HP Operations Manager for Windows		
Product Version:	Management Server : A.09.00		
Patches:			
Management Server Name:	btovm171		
Report Creation Time:	Thursday, February 10, 2011 5:10:32 PM		
<i>Category: ORASPI</i>			
Password Information	Capacity	Expiration Time	
Oracle SPI InstantOn 50 Nodes			
Total number of passwords: 1			
Password 1:	Oracle SPI DB InstantOn 50 Nodes	50	Thu Mar 10 23:59:59 2011

**Scenario 2:** Migration license is installed for 12 Oracle Database nodes, based on the mapping with tier-4 license (HP SPI Oracle Tier 4 Software ELTU).

The following figure shows the HP Operations Manager Feature License Report for the installation.

# HP Operations Manager Feature License Report

## HP Operations Manager Feature License Report

### HP Operations Manager Server Information

Product Name: HP Operations Manager for Windows  
Product Version: Management Server : A.09.00  
Patches:  
Management Server Name: btovm171  
Report Creation Time: Thursday, February 10, 2011 5:33:38 PM

### Other Component Features

#### ORASPI

HP Operations Smart Plug-in for Oracle	12	0	OK	oraspi
HP Operations Smart Plug-in for Oracle for remote monitoring	50	0	OK	oraspiremote

The following figure shows the HP Operations Manager License Password Report for the installation.

HP Operations Manager License Password Report		
<b>HP Operations Manager Server Information</b>		
Product Name:	HP Operations Manager for Windows	
Product Version:	Management Server : A.09.00	
Patches:		
Management Server Name:	btovm171	
Report Creation Time:	Thursday, February 10, 2011 5:33:38 PM	
<i>Category: ORASPI</i>		
Password Information	Capacity	Expiration Time
<b>Ops Oracle DB SPI 12 Instance (NP-Failover) Migration</b>		
Total number of passwords: 1		
Password 1: TESTSPIINSTANCE TB819AAE HP Ops SPI 12 Oracle DB Instance M...	1	Never
Features enabled by these passwords:		
Ops Oracle DB SPI 12 Instance (NP-Failover) Migration	1	
<b>Oracle SPI InstantOn 50 Nodes</b>		
Total number of passwords: 1		
Password 1: Oracle SPI DB InstantOn 50 Nodes	50	Thu Mar 10 23:59:59 2011

For more information, see [Licensing Scenarios](#).

## License Supporting Tools

This section describes the license supporting tools.

### ovolicense

The Operations Embedded Licensing ovolicense tool is the central command to access the license information. Using this tool, you can perform following operations:

- Install all licenses stored in a file
- Install passwords from a file using the interface
- Install licenses using the order number
- Disable or enable licenses

### omlicreporter(.bat)

The omlicreporter(.bat) script runs the HPOM License reporter and generates the HPOM Feature License Report and HPOM License Password Report on the HPOM server.

### OMLicenseReporter.jar

OMLicenseReporter.jar is the text formatter that receives the licensing information provided by the SPI to the HPOM server, processes it, and formats it into HTML pages.

### Ovodetect

Ovodetect is an agent command, which executes all scripts for Application SPIs and evaluates data

for HPOM License Report. If the command is used with the parameter, `-t`, on the managed node, it shows the result on the managed node only and does not send the data to the HPOM server for reporting. If the `ovodetect` command is used without any parameter, it sends the license information

from the managed node to the HPOM server. So the License Report at the HPOM server receives the updated data from the managed node.

For a detailed list of the license supporting tools, see the HP Operations Manager White-Paper: Licensing Best Practices and Reporting. The document is available at the following location: <http://support.openview.hp.com/selfsolve/manuals>

## Licensing Scenarios

This section details the SPI License installation scenarios.

### Scenario 1: User installs Tier-based license

If you install three Tier-based licenses, the License Reports display the license count as three for the Tier-based licenses.

The following figures show the HP Operations License Reports.

HP Operations Complementary Real-Time Upg OS Instance	0	0 <sup>1</sup>	--	complrtpg
<b>Unlimited features</b>				
HP Operations OS Instance Evaluation	unlimited	0	OK	ovoagteval
HP Operations Real-Time OS Instance Evaluation	unlimited	0	OK	rtimeeval
<b>Other Component Features</b>				
<b>EXSPI</b>				
HP Operations Smart Plug-in for Microsoft Exchange Server	0	0	OK	exspi
<b>ADSPI</b>				
HP Operations Smart Plug-in for Microsoft Active Directory	3	0	OK	adspi
<b>PA</b>				
HP Operations Performance Agent	0	0	OK	pa
HP Operations Performance Agent OS Instance	0	0	OK	paosi
HP Operations Performance Agent OS Instance NP-DV	0	0	OK	paosinpdv
HP Operations Performance Agent OS Instance NP-FO	0	0	OK	paosinpfo



Category: HPOM		
Password Information	Capacity	Expiration Time
<b>HP Operations Manager (password for Windows)</b>		
Total number of passwords: 1		
Password 1: IPP11L23Z55V38MI .OMW-15M HP Operations Manager Windows 15-...	1	Mon May 07 05:29:59 2012
<i>Features enabled by these passwords:</i>		
HP Operations Manager	1	
HP Operations OS Instance	1	
HP Operations OS Instance Evaluation	Unlimited	
HP Operations Real-Time OS Instance Evaluation	Unlimited	
Category: ADSPI		
Password Information	Capacity	Expiration Time
<b>ACTIVE DIR SPI Instant-On</b>		
Total number of passwords: 1		
Password 1: Active Dir SPI Instant-On	50	Mon May 09 23:59:59 2011
<i>Features enabled by these passwords:</i>		
ACTIVE DIR SPI Instant-On	50	
<b>Active Directory SPI all features</b>		
Total number of passwords: 1		
Password 1: TESTHPOMTIER B9172AA HP SPI for Microsoft Active Directory ...	3	Never
<i>Features enabled by these passwords:</i>		
Active Directory SPI all features	3	

**Scenario 2: User installs Tier-based and Instance-based licenses**

If you install Instance-based licenses along with existing Tier-based licenses, the License Report shows the license count of both the Instance-based and Tier-based licenses installed.

For example, if a user installs seven Instance-based licenses on the existing three Tier-based licenses, the license count becomes ten, that is, 3 Tier-based licenses + 7 Instance-based licenses = 10 licenses.

The following figure shows the HP Operations Manager Feature License Report and the report shows the license count as 10.

Other Component Features				
<b>EXSPI</b>				
HP Operations Smart Plug-in for Microsoft Exchange Server	0	0	OK	exspi
<b>ADSPI</b>				
HP Operations Smart Plug-in for Microsoft Active Directory	10	0	OK	adspi
<b>PA</b>				
HP Operations Performance Agent	0	0	OK	pa
HP Operations Performance Agent OS Instance	0	0	OK	paosi
HP Operations Performance Agent OS Instance NP-DV	0	0	OK	paosinpdv
HP Operations Performance Agent OS Instance NP-FO	0	0	OK	paosinpfo

The following figure shows the HP Operations Manager License Password Report.

Category: ADSPI		
Password Information	Capacity	Expiration Time
<b>ACTIVE DIR SPI Instant-On</b>		
Total number of passwords: 1		
Password 1: Active Dir SPI Instant-On	50	Mon May 09 23:59:59 2011
Features enabled by these passwords:		
ACTIVE DIR SPI Instant-On	50	
<b>Ops-SPI-Active-Dir-Instance (Production)</b>		
Total number of passwords: 1		
Password 1: TESTSPIINSTANCE TB080AA HP Ops SPI Active Directory Instanc...	7	Never
Features enabled by these passwords:		
Ops-SPI-Active-Dir-Instance (Production)	7	
<b>Active Directory SPI all features</b>		
Total number of passwords: 1		
Password 1: TESTHPOMTIER B9172AA HP SPI for Microsoft Active Directory ...	3	Never
Features enabled by these passwords:		
Active Directory SPI all features	3	

**Scenario 3: User installs Tier-based and Migration licenses**

If you install Migration licenses along with existing Tier-based licenses, the HP Operations Manager Feature License Report shows the Migration licenses count. It ignores the Tier-based licenses.

**Note:** Though the HP Operations Manager Feature License Report shows only the Migration

licenses count, the HP Operations Manager License Password Report will still list the Tier-based licenses. These licenses will be removed from the report only if the user uninstalls the Tier-based licenses from the management server.

For example, if a user has three Tier-based licenses and installs four Migration licenses on it, the HP Operations Manager Feature License Report shows the license count as four.

Other Component Features				
<b>EXSPI</b>				
HP Operations Smart Plug-in for Microsoft Exchange Server	0	0	OK	exspi
<b>ADSPI</b>				
HP Operations Smart Plug-in for Microsoft Active Directory	4	0	OK	adspi
<b>PA</b>				
HP Operations Performance Agent	0	0	OK	pa
HP Operations Performance Agent OS Instance	0	0	OK	paosi
HP Operations Performance Agent OS Instance NP-DV	0	0	OK	paosinpdv
HP Operations Performance Agent OS Instance NP-FO	0	0	OK	paosinpfo

The following figure shows the HP Operations Manager License Password Report. The report shows all the licenses installed on the management server.

Category: ADSPI		
Password Information	Capacity	Expiration Time
<b>ACTIVE DIR SPI Instant-On</b>		
Total number of passwords: 1		
Password 1: Active Dir SPI Instant-On	50	Mon May 09 23:59:59 2011
Features enabled by these passwords:		
ACTIVE DIR SPI Instant-On	50	
<b>Ops Active Directory SPI 1 Instance Migration</b>		
Total number of passwords: 1		
Password 1: TESTSPIINSTANCE TB877AAE HP Ops SPI 1 Active Dir Instance M...	4	Never
Features enabled by these passwords:		
Ops Active Directory SPI 1 Instance Migration	4	
<b>Active Directory SPI all features</b>		
Total number of passwords: 1		
Password 1: TESTHPOMTIER B9172AA HP SPI for Microsoft Active Directory ...	3	Never
Features enabled by these passwords:		
Active Directory SPI all features	3	

#### Scenario 4: User Installs Tier + Migration + Instance-based Licenses

If you install Migration and Instance-based licenses along with existing Tier-based licenses on the management server, the HP Operations Manager Feature License Report shows the count of Migration and Instance-based licenses. It ignores the Tier-based licenses.

For example, if a user installs four Migration and seven Instance-based licenses along with the existing three Tier-based licenses, the HP Operations Manager Feature License Report shows the license count as 11, that is 4 Migration + 7 Instance = 11 licenses.

Other Component Features					
<b>EXSPI</b>					
HP Operations Smart Plug-in for Microsoft Exchange Server	0	0	OK	exspi	
<b>ADSPI</b>					
HP Operations Smart Plug-in for Microsoft Active Directory	11	0	OK	adspi	
<b>PA</b>					
HP Operations Performance Agent	0	0	OK	pa	
HP Operations Performance Agent OS Instance	0	0	OK	paosi	
HP Operations Performance Agent OS Instance NP-DV	0	0	OK	paosinpdv	
HP Operations Performance Agent OS Instance NP-FO	0	0	OK	paosinpfo	

The following figure shows the HP Operations Manager License Password Report. The report shows all the licenses installed on the management server.

Category: ADSPI		
Password Information	Capacity	Expiration Time
<b>ACTIVE DIR SPI Instant-On</b>		
Total number of passwords: 1		
Password 1: <i>Active Dir SPI Instant-On</i>	50	Mon May 09 23:59:59 2011
<i>Features enabled by these passwords:</i>		
ACTIVE DIR SPI Instant-On	50	
<b>Ops-SPI-Active-Dir-Instance (Production)</b>		
Total number of passwords: 1		
Password 1: <i>TESTSPIINSTANCE TB080AA HP Ops SPI Active Directory Instanc...</i>	7	Never
<i>Features enabled by these passwords:</i>		
Ops-SPI-Active-Dir-Instance (Production)	7	
<b>Ops Active Directory SPI 1 Instance Migration</b>		
Total number of passwords: 1		
Password 1: <i>TESTSPIINSTANCE TB877AAE HP Ops SPI 1 Active Dir Instance N...</i>	4	Never
<i>Features enabled by these passwords:</i>		
Ops Active Directory SPI 1 Instance Migration	4	
<b>Active Directory SPI all features</b>		
Total number of passwords: 1		
Password 1: <i>TESTHPOMTIER B9172AA HP SPI for Microsoft Active Directory ...</i>	3	Never
<i>Features enabled by these passwords:</i>		
Active Directory SPI all features	3	

### Scenario 5: User installs only Instance-based licenses

If you install only Instance-based licenses, the License Reports will show the count of all the installed Instance-based licenses.

For example, if a user installs seven Instance-based licenses, the License Reports show the license count as seven.

Other Component Features				
<b>EXSPI</b>				
HP Operations Smart Plug-in for Microsoft Exchange Server	0	0	OK	exspi
<b>ADSPI</b>				
HP Operations Smart Plug-in for Microsoft Active Directory	7	0	OK	adspi
<b>PA</b>				
HP Operations Performance Agent	0	0	OK	pa
HP Operations Performance Agent OS Instance	0	0	OK	paosi
HP Operations Performance Agent OS Instance NP-DV	0	0	OK	paosinpdv
HP Operations Performance Agent OS Instance NP-FO	0	0	OK	paosinpfo

Category: ADSPI		
Password Information	Capacity	Expiration Time
<b>ACTIVE DIR SPI Instant-On</b>		
Total number of passwords: 1		
Password 1: <i>Active Dir SPI Instant-On</i>	50	Mon May 09 23:59:59 2011
<i>Features enabled by these passwords:</i>		
ACTIVE DIR SPI Instant-On	50	
<b>Ops-SPI-Active-Dir-Instance (Production)</b>		
Total number of passwords: 1		
Password 1: <i>TESTSPIINSTANCE TB080AA HP Ops SPI Active Directory Instanc...</i>	7	Never
<i>Features enabled by these passwords:</i>		
Ops-SPI-Active-Dir-Instance (Production)	7	

## FAQ

1. How can I migrate existing licenses from the Tier-based licensing model to Instance based-licensing?

If you are currently using Tier-based licensing model, you must request for equivalent Migration licenses. To request for Migration licenses, follow these steps:

- a. Go to <https://webware.hp.com>.
- b. Select **Migrate license(s)**.
- c. Type your Migration password in the **Migration password** field and click **Next**.
- d. Type your active SAID (Service Agreement ID) value in the *License Migration Validation* page and click **Next**.

You must install these Migration licenses on the HPOM server. For information on installing licenses on the HPOM server, see [Installing License Key Using AutoPass Interface](#). When you install the Migration licenses, the Tier-based licensing information is removed from HPOM licensing report. For new application servers, you must order new Instance-based licenses.

2. When a Migration license is installed, does it disable the installed Tier-based licenses and how will it be reported?

Yes, when a Migration license is installed on the HPOM server for any SPI, all Tier-based licenses are disabled for the SPI and will not be listed in the HPOM License Report.

3. What types of licenses are installed by the SPI DVDs 2008, 2009, and 2010?

The SPI DVDs 2008, 2009, and 2010 use the Tier-based licensing model. Only HPOM for Windows 09.00 (SPIDVD 2010.3) provides the Instance-based licensing model. By default, the SPI DVD provides 50 Instant-on licenses with a lifetime of 60 days. For the list of HPOM for UNIX and Windows patches that support the Instance-based licensing model, see [Table 1](#).

4. How is the License Report generated on HPOM server?

The OprEl component runs the script on all nodes managed by the HPOM server once every day. The script runs all Application SPIs license-related scripts and collects the number of Application instances currently monitored by the SPI. It collects the respective SPI data and stores it in the HPOM server database. An HPOM operator can generate License Reports as required, using the HPOM interface or a command line utility.

- For HPOM for Windows:  
Open the HPOM console and select **Tools → HP Operations Manager Tools → Licensing → License Report**.
- For HPOM for UNIX 09.xx:
  1. Log on to the HPOM server.



2. Select **Tasks** → **Licenses**.

The system generates the text-based HTML report.

The command line option to generate the report is as follows:

Run `ovolicense -r -p`, at the shell prompt to generate the License Report.

OR

Run the command: `/opt/OV/bin/omlicreporter`

The created License Report is stored at the following location:

`/opt/OV/www/htdocs/ito/OMLicenseReport.html`

You can access the report using either of the following links:

<http://<omserver>:8081/ITO/OMLicenseReporter.html>

OR

<https://<omserver>:8444/ITO/OMLicenseReporter.html>

This shows only the text report. To generate HTML-based report, use the AutoPass interface. For information about starting the AutoPass interface, see [Requesting New License Using AutoPass Interface](#).

5. How can I uninstall a SPI license from the HPOM server?

If you are an Application SPI user, you can remove SPI permanent license any time from HPOM server. You must use the AutoPass interface to remove the password from HPOM server.

Open HPOM console and select **Tools** → **HP Operations Manager Tools** → **Licensing** → **Obtain License**.

The default parameter is **-g -a HPOM**. Replace HPOM with the respective SPI acronym, such as, ORASPI. See the following table for a list of SPI acronyms.

Table: 3 - Application SPI Acronym List

SPI Name	SPI Acronym
SPI for Oracle	ORASPI
SPI for Microsoft SQL Server	MSSSPI
SPI for Sybase	SYBSPi
SPI for Informix	INFSPi
SPI for Microsoft Exchange Server	EXSPi
SPI for Microsoft Active Directory	ADSPi
SPI for Microsoft Enterprises Server	MSESSPI
SPI for SAP	SAPSPi
SPI for Oracle Application Server	OASSPI
SPI for Web Sphere	WBSSPI
SPI for Web Logic	WLSSPI

The tool lists the SPI-specific license and you can select the check box corresponding to the license to remove it permanently. If required, the same license can be restored on the same node, if you did not select the **Remove License permanently** check box while removing the license.

6. Why are two types of License Report tools shown on the HPOM for Windows 08.1x server after installing the HPOM SPI patches for Instance-based licensing?

On HPOM for Windows 08.1x, two reports are available to support the legacy licensing model. You must use the report that does not have the keyword, Legacy, in the name. Legacy reports may have incorrect information. The Legacy License Report on HPOM for Windows is used to support the reporting of licenses installed using SPIs from the older SPI DVDs (2008 and 2009). This report becomes obsolete when new SPI DVDs are used.

The Legacy License Report does not report any Instance-based license and shows wrong numbers when Instance-based licenses are used.

7. How does the SPI differentiate between a node instance and remote monitoring?

Each Application SPI has a different algorithm to evaluate application instance count for local (with agent) nodes and for remote (without agent) nodes. The algorithms differ for each SPI and based on the SPI domain, scripts evaluate the instance count.

8. How do SPIs monitor the application cluster environment while reporting the number of instances monitored?

Cluster environment (failover) has more than one instance for an application but at any given time, only one is active. SPI algorithms report the total count of both active and passive instances of applications for the SPI licensing report.

9. Can I use both the licensing models (Tier-based and Instance-based) on an HPOM server?

Yes, it is possible to use both Tier-based and Instance-based licensing models on an HPOM server and it does not impact the Application SPI functionalities. But when there are some combinations on the nodes, some with old instrumentation that supports Tier-based licensing and some with new instrumentation that support Instance-based licensing, the Licensing Report may not be accurate. It is recommended to deploy the instrumentation that supports Instance-based licensing to all the nodes as soon as possible.

10. I ordered for license passwords prior to installing the SPI DVD 2009. Can I reuse these licenses? If not, what can I do now?

The SPI DVD 2009 or earlier versions support only Tier-based licensing model, except for SPI for JBoss, which supports Instance-based licensing model. If you have Tier-based licensing model and want to continue using the Tier-based licensing model, you do not have to install any patch or the new SPI DVD. If you are using the SPI DVD 2009 or an earlier SPI and want to migrate to Instance-Based licensing model, you can install the HPOM for UNIX or Windows patches released for all Application SPIs or migrate to HPOM for Windows 09.00 with SPI DVD 2010.3. After migrating to Instance-based licensing, old Tier-based licenses count will not be listed from the management nodes.

## References

A whitepaper for the new HPOM licensing model is available at the location, <http://support.openview.hp.com/selfsolve/manuals>. See the document for more information.

© 2011 Hewlett-Packard Development Company, L.P. The information contained herein is subject to change without notice. The only warranties for HP products and services are set forth in the express warranty statements accompanying such products and services. Nothing herein should be construed as constituting an additional warranty. HP shall not be liable for technical or editorial errors or omissions contained herein.

