



Hewlett Packard
Enterprise

HPE Application Performance Management

Software Version: 9.30

APM What's New

Document Release Date: July 2016
Software Release Date: July 2016

Legal Notices

Warranty

The only warranties for Hewlett Packard Enterprise products and services are set forth in the express warranty statements accompanying such products and services. Nothing herein should be construed as constituting an additional warranty. HPE shall not be liable for technical or editorial errors or omissions contained herein.

The information contained herein is subject to change without notice.

Restricted Rights Legend

Confidential computer software. Valid license from HPE required for possession, use or copying. Consistent with FAR 12.211 and 12.212, Commercial Computer Software, Computer Software Documentation, and Technical Data for Commercial Items are licensed to the U.S. Government under vendor's standard commercial license.

Copyright Notice

© Copyright 2005 - 2016 Hewlett Packard Enterprise Development LP

Trademark Notices

Adobe® and Acrobat® are trademarks of Adobe Systems Incorporated.

AMD and the AMD Arrow symbol are trademarks of Advanced Micro Devices, Inc.

Google™ and Google Maps™ are trademarks of Google Inc.

Intel®, Itanium®, Pentium®, and Intel® Xeon® are trademarks of Intel Corporation in the U.S. and other countries.

iPod is a trademark of Apple Computer, Inc.

Java is a registered trademark of Oracle and/or its affiliates.

Microsoft®, Windows®, Windows NT®, Windows® XP, and Windows Vista® are U.S. registered trademarks of Microsoft Corporation.

Oracle is a registered trademark of Oracle Corporation and/or its affiliates.

UNIX® is a registered trademark of The Open Group.

Documentation Updates

The title page of this document contains the following identifying information:

- Software Version number, which indicates the software version.
- Document Release Date, which changes each time the document is updated.
- Software Release Date, which indicates the release date of this version of the software.

To check for recent updates or to verify that you are using the most recent edition of a document, go to:

[https://softwaresupport.hpe.com/group/softwaresupport/search-result?keyword=.](https://softwaresupport.hpe.com/group/softwaresupport/search-result?keyword=)

This site requires an HPE Passport account. If you do not have one, click the **Create an account** button on the HPE Passport Sign in page.

Support

Visit the HPE Software Support website at: <https://softwaresupport.hpe.com>

This website provides contact information and details about the products, services, and support that HPE Software offers.

HPE Software Support provides customer self-solve capabilities. It provides a fast and efficient way to access interactive technical support tools needed to manage your business. As a valued support customer, you can benefit by using the support website to:

- Search for knowledge documents of interest
- Submit and track support cases and enhancement requests
- Download software patches
- Manage support contracts
- Look up HPE support contacts
- Review information about available services
- Enter into discussions with other software customers
- Research and register for software training

Most of the support areas require that you register as an HPE Passport user and sign in. Many also require a support contract. To register for an HPE Passport ID, go to <https://softwaresupport.hpe.com> and click **Register**.

To find more information about access levels, go to:

<https://softwaresupport.hpe.com/web/softwaresupport/access-levels>

HPE Software Integrations, Solutions and Best Practices

Access the Hewlett Packard Enterprise Software Support site (<https://softwaresupport.hpe.com/manuals>) to search for a wide variety of best practice documents and materials.

What's New in APM 9.30

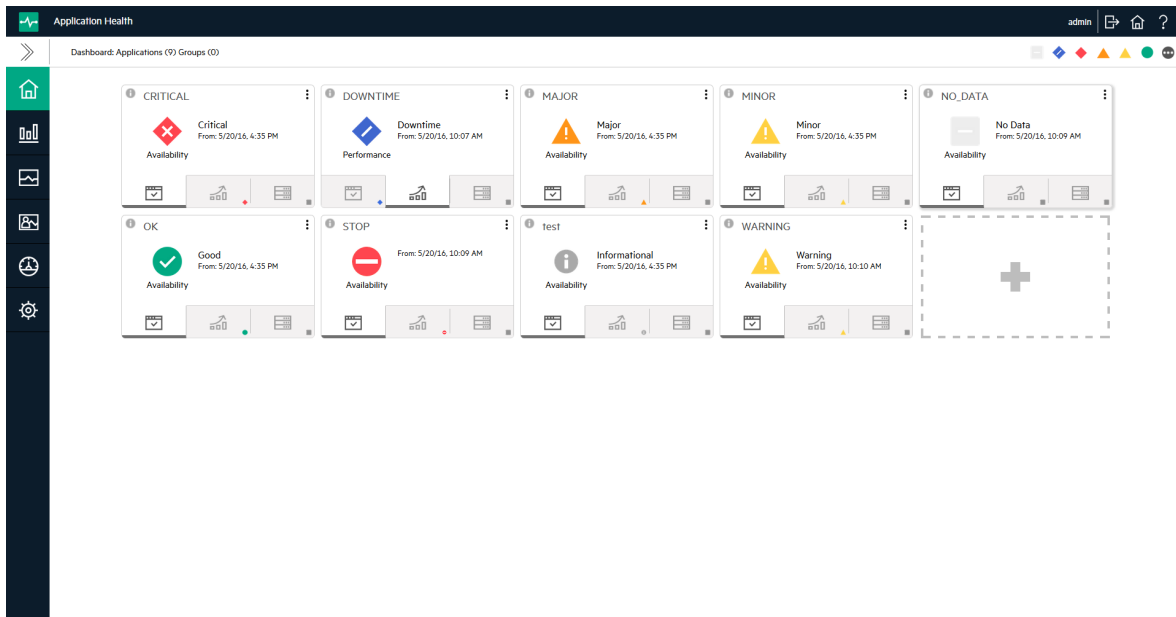
This file provides information about new features and enhancements to HPE Application Performance Management (APM) 9.30.

Note: For APM simplification, a number of products/features were removed from APM 9.30. For details, see the [APM version 9.30 Release Notes](#).

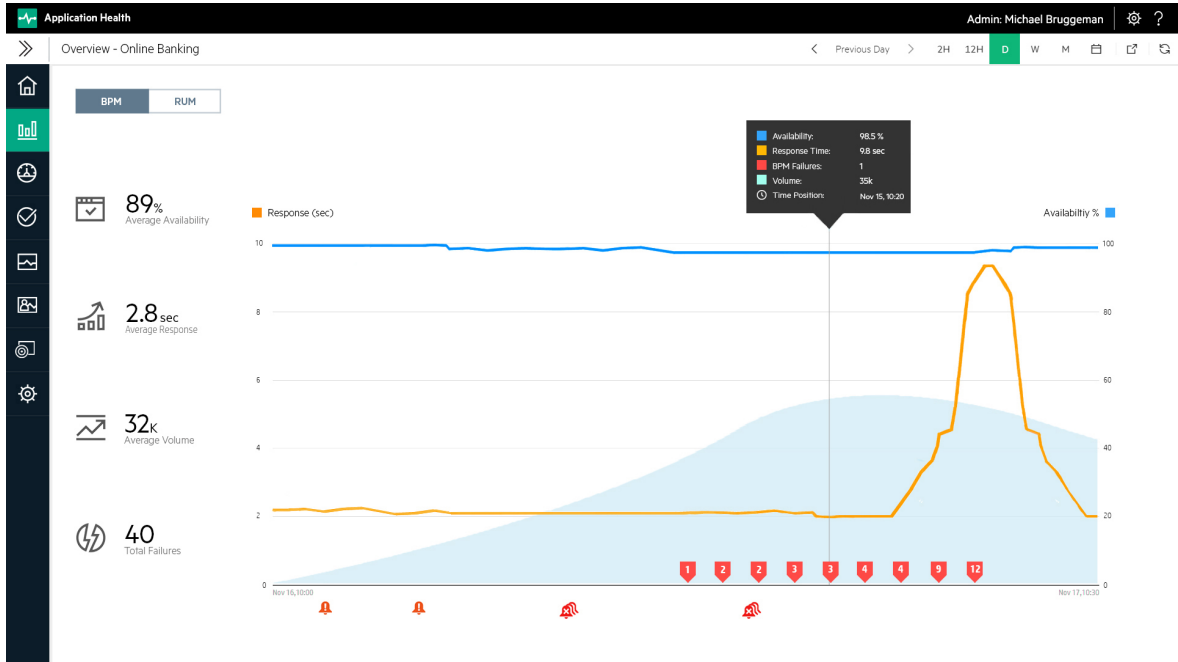
Application Health

- Application Health (replaces App Owner Zone) – New set of reports tailored specifically for application owners who are looking for high level status and isolation on their applications.
- Dashboard – Displays overall status of all your applications in a single view.

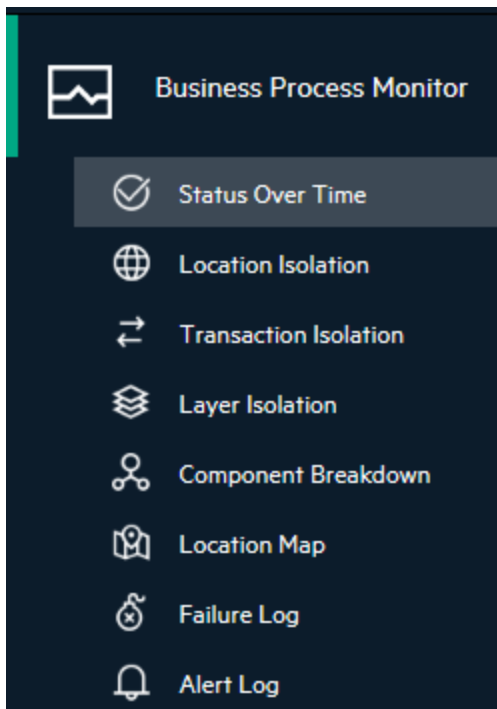
Note: It is recommended to set Application Health as the default landing page so when you login to APM, the Application Health dashboard appears. You can click the Home icon in the upper right corner of the page to open the classic APM user interface.



- Overview Report – Provides an overview of the status of your application with data from BPM and RUM. When viewing the Overview Report with the BPM tab selected, you can also see the RUM volume for better visibility to the application's health.

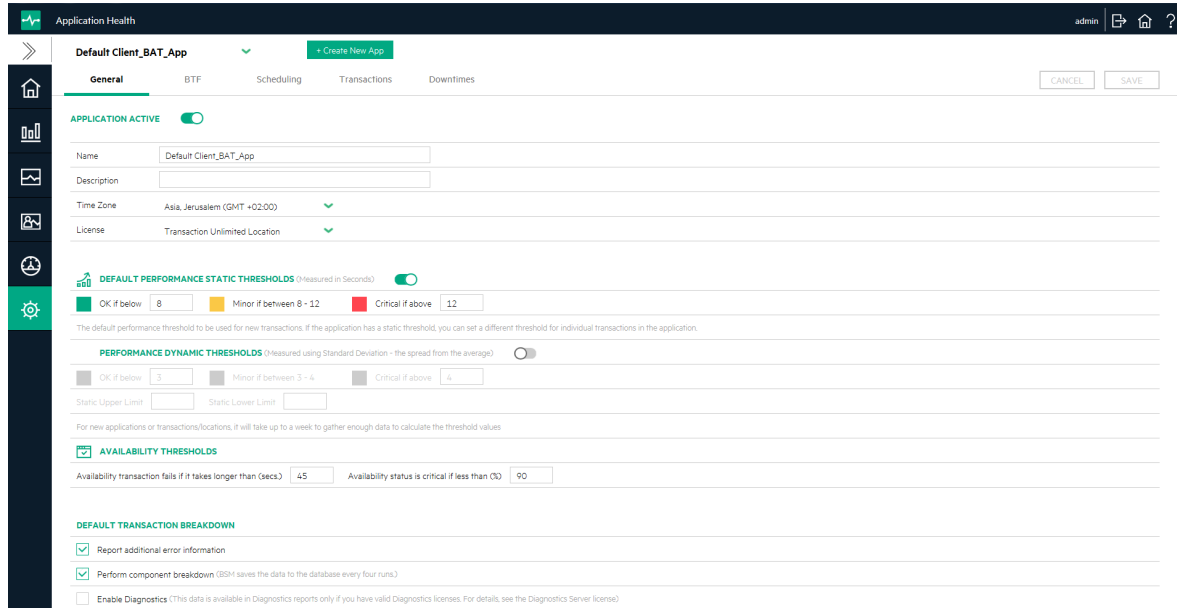


- Business Process Monitor Reports – Enables you to monitor the performance and availability of your application's health.

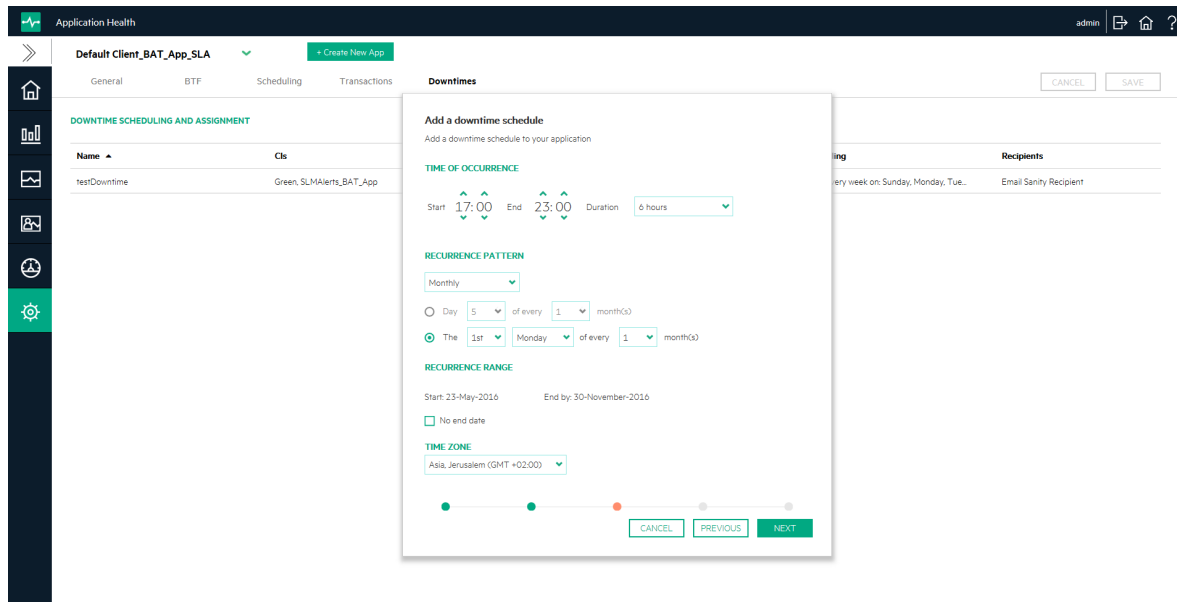


- Settings – Enables you to create and configure your applications.

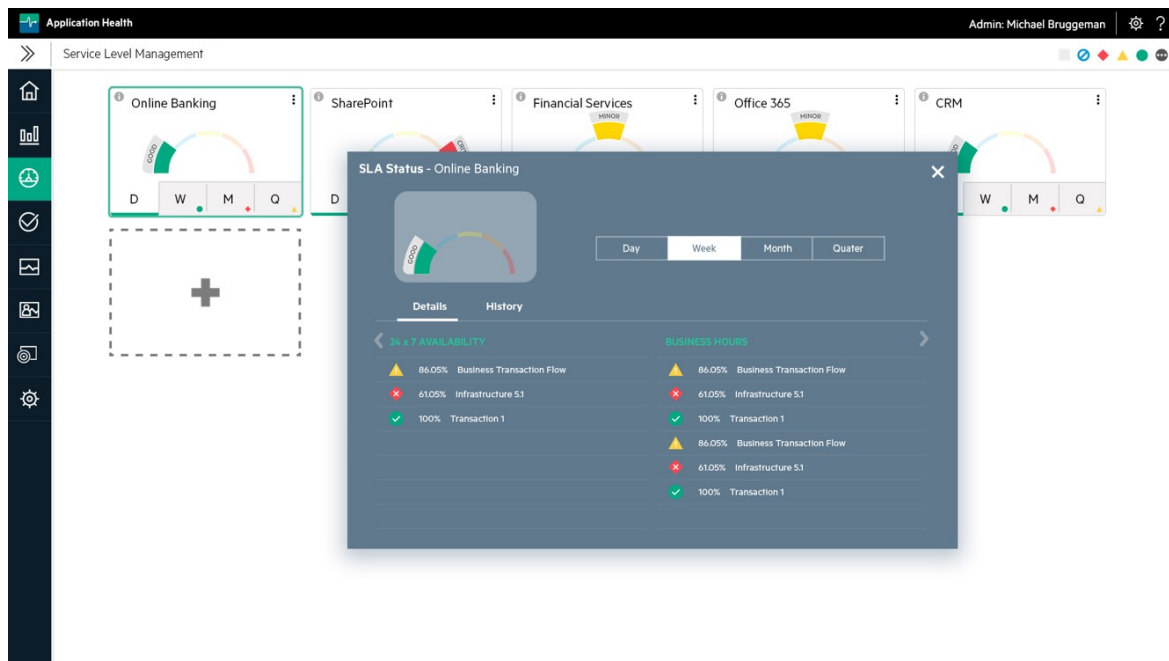
To perform advanced administration tasks, access the Settings tab.



- Downtime Administration – Enable you to create or edit downtimes for your applications.



- SLM – Enables you to track and report on business objectives and SLAs.



- RUM-PC integration – Enrich RUM-PC integration with network data for integrating Shunra Network Virtualization (NV)
- Mobile
 - Web view module for iOS 8
 - Show network mobile type
 - Show full stack trace on session details
 - Support MultiDex based applications
 - Allow ACRA override

APM Platform Enhancements and Shared Services

Platform Enhancements

- RTSM based on UCMDB 10.22
- OpenJDK 8 (server)
- Linux 7.2 (server), Windows 10 (client)
- Browsers and Java 8 updates (client)

- vSphere ESXi 6
- Tomcat update (security)
- Latest Jboss7 update

User Interface

- Hewlett Packard Enterprise (HPE) rebranding

Content

- Removed embedded Operations Manager i (OMi) as part of APM simplification and footprint reduction
- Removed TransactionVision (TV) and Business Process Insight (BPI)
- Enhancement requests
- New monitoring content for BPM, RUM, and SiteScope. For more information, see the products sections below.
- RTSM10 built-in features – CI search, push sync instead of pull, etc.

Run-Time Service Model (RTSM)

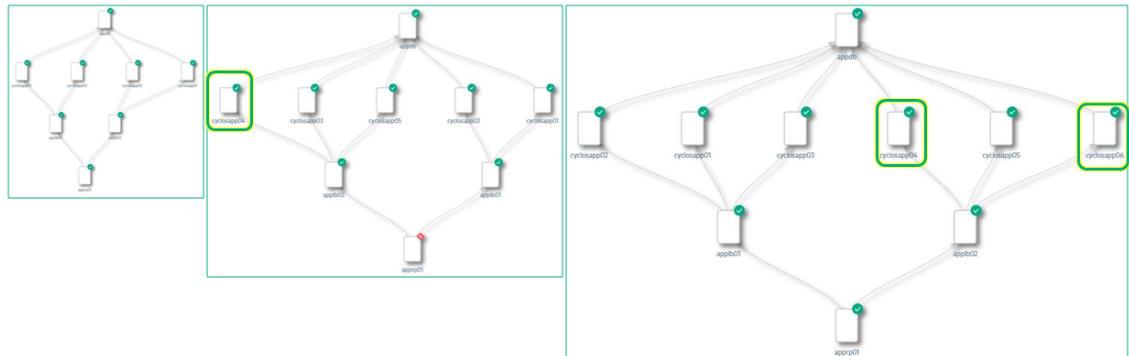
Note: RTSM is based on UCMDB.

- APM's RTSM was upgraded from version 9.05 to 10.22
- Improved CI capacities
- Supports Push sync integration with UCMDB and OMi, supporting higher capacities
- Supports direct discovery by Universal Discovery (UD) into RTSM
- Updated discovery and integrations as part of CP18

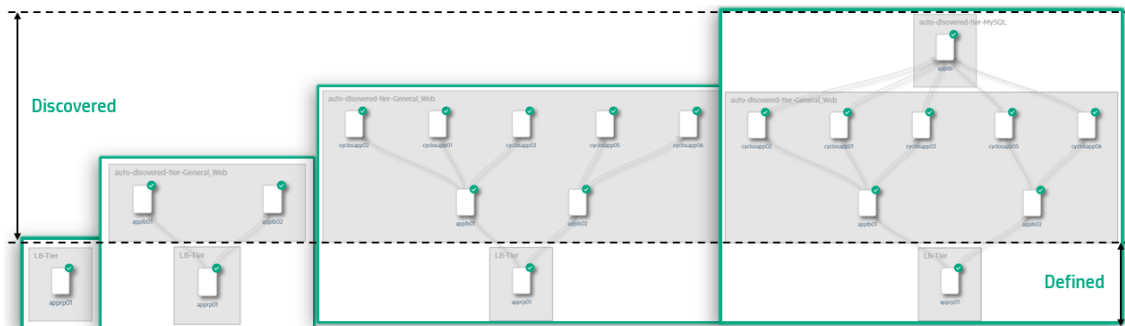
HPE Real User Monitor 9.30

- Application Health
 - Added RUM status to the Dashboard
 - Added RUM performance, availability, volume and error data to the Overview report
 - Added quick drill down from Overview report into detailed RUM availability and performance reports
- Docker Support
 - RUM Docker probe can monitor all traffic on the Docker network interface. There is no need for the network team to define port mirroring!
 - Support for applications which are hosted in clustering solutions such as Kubernetes and Swarm

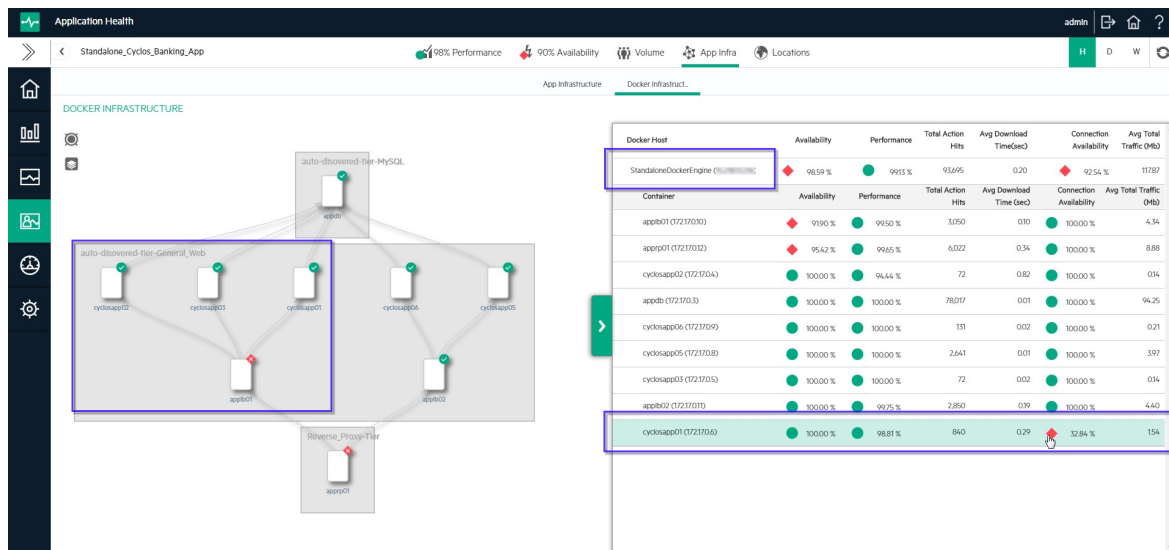
- Configuration is simpler than ever! Define the Docker Host IP address or Cluster Master IP address and RUM Engine will do the rest.
 - No need for manual configuration update when deployment has changed. Any change within the cluster is discovered automatically.
 - Discover cluster nodes and auto deployment of sniffer probe on the newly discovered nodes
 - Discover new containers as they are deployed and start monitoring them automatically



- Discover backend tiers



- Special Docker application infrastructure reports
 - Present the traffic flow between the Docker containers and visualize different application tiers.
 - Present the Container deployment according to clusters and hosts
 - Easily Identify cluster/node/container performance or availability issues



- Support for NDC financial protocol from NCR corporation – The solution enables customers to monitor the following actions for ATMs based out of various geographically locations and classify action details, session details, and events based on the NDC protocol message parsing.
 - User actions (for example, balance inquiry and menu driven details at an ATM)
 - Transactions (for example, cash withdrawals and check deposits)
 - System maintenance (for example, cash loading, putting in maintenance mode)
- Enhancements
 - RUM mobile – Ability to copy iOS full crash log
 - RHEL7 install update
 - New HPE look & feel and rebranding to HPE for RUM UI and Installer
- Certifications
 - Support Java 8 on the client machine
 - Support Windows 10 on the client machine
 - Red Hat Enterprise Linux Version 7 (RHEL7) – support for RUM sniffer probe and server collector

HPE Business Process Monitor 9.30

- Application Health (replaces App Owner Zone) – New set of reports tailored specifically for application owners who are looking for high level status and isolation on their applications. For further information, see ["Application Health" on page 4.](#)

- **Retry on Failure**

The Retry on Failure setting enables you to control how BPM responds when a script fails.

If a script fails, this may be caused by a temporary problem not related to the script, for example a temporary network or Internet error.

When this option is enabled, if a script fails the first attempt, but is successful on a second or third attempt, only the successful attempt is displayed in BPM reports. Initial failed attempts are only listed in log files.

For further information about this feature, see "Retry on Failure" in the Business Process Monitor Admin Guide.

- **Modify Installation Directory During Silent Installation**

By default, the installation directory used for a silent installation is C:\HP\BPM. You can now configure the silent installation to use a different directory. For details, see "How to Configure the Installation Directory" in the Business Process Monitor Deployment Guide

- **Working with a Locked UFT Console**

In UFT 12.53 there is the option for BPM to work with a designated UFT user even when the UFT console is locked. For further information, see "Working with a Locked UFT Console" in the Business Process Monitor Deployment Guide.

- **Integration with HPE Mobile Center 2.0**

BPM 9.30 is fully integrated with HP Mobile Center 2.0

This integration includes the following benefits:

- Mobile Center Server can now be installed Windows
- Device reservation
- Support for Android and iOS
- Support for selecting a device by device properties
- Out of App support:
 - BPM can now monitor system events that are not part of the application being tested, this allows your script to control system messages
 - BPM will be able to monitor system apps (like exchange)
 - BPM will be able to send and receive SMS/MMS messages
- Monitor non-instrumented applications
- Support for native browsers (Chrome and Safari)

For further information, see "BPM Real Device Monitoring", available from the [HPE Software Product Manuals site](https://softwaresupport.hpe.com/group/softwaresupport/) (https://softwaresupport.hpe.com/group/softwaresupport/).

- Support for LoadRunner 12.53 and UFT 12.53

BPM 9.30 supports the latest version of LoadRunner and UFT (version 12.53). Some of the benefits of this release are as follows:

- TruClient now supports Chromium 46 and Firefox 40.0.3
- TruClient has improved step end events, including: New end event – Object Exists.
- Support for SAPGUI 7.40.
- Citrix now supports Optical Character Recognition (OCR) text trapping. For details, see the Function Reference.
- C VUser: Switched C Interpreter to the latest Microsoft C Runtime.
- Support for Java 8 protocols
- Enhanced SAPUI5 recording in TruClient
- HTTP Video Streaming (HTML5, HLS) support
- REST step-builder editor in VuGen
- JSON manipulation APIs
- 64-bit replay support in various Java protocols and C Vuser protocol
- VuGen now supports Git version control system.
- New Supported Environments
This release has added support for the following environments:
 - Microsoft Windows 10
 - Red Hat Enterprise Linux (RHEL) Version 7.2 and 6.6 (64 bit)
 - VMware ESXi6.0
 - Firefox ESR 45 and below
 - Java Runtime Environment Version 7 update 79 and Version 8 update 92 on client side
 - Upgrade from Tomcat 7.0.42 to Tomcat 8.0.29
- End of support

The following are no longer supported:

- All 32 bit operating systems (Windows and Linux)
- Internet Explorer 9

SiteScope 11.32

- License Migration – Provides the ability to work with the point-based license model if you have a valid point-based license. You can migrate your point-based license into the 11.32 configuration and use the new features and functionality of 11.32. See the SiteScope Deployment Guide for details on license migration.
- Integration with AutoPass License Usage Hub – With this integration, you will be able to view all your HPE product licenses information from the dashboard of the AutoPass License Server Usage Hub.
- Unified Console – Enhanced with a new look for better usability.
- Unified Console - Manage View – Enhanced to update custom properties for the following monitors:
 - CPU Monitor
 - Log File Monitor
 - Memory Monitor
 - Ping Monitor
 - Script Monitor
 - Service Monitor
 - URL Monitor
- Monitor Refreshment – REST API Monitor enables monitoring the performance of software that provide their counters in the form of JSON or XML through HTTP/HTTPS interfaces using REST API calls. Some examples of software that can be monitored using the REST API monitor are Mongo DB, GlassFish AS, and Docker. Using this monitor you can also monitor your REST Web Services. This monitor supports monitoring all software that provide their counters in the form of JSON or XML representation through REST API HTTP/HTTPS methods.
- Monitor Enhancements
 - Docker Monitor is enhanced with the following:
 - Extended cluster support to include monitoring of Kubernetes clusters
 - Enhanced auto-discovery features
 - Support for Docker configured for SSL

BSM integration is partially supported; the monitor sends data and simple monitor CI topology to APM. The monitor does not report the full Docker topology model to APM.

- Custom Monitors are enhanced with the following features:
 - Option to specify UI elements for script parameters through XML configuration file.
 - Hide configuration file and data processing script for the custom monitor.
 - Option to protect the Content Package with password during export and import of the content package.
 - Calculate MD5 checksum for custom monitor.
- Alerts – REST alerts is a new alert action type. REST alert sends data to any application URL using the JSON or XML format. This alert sends notifications from SiteScope to the application via the URL.
- Public APIs
 - New REST APIs for data acquisition can be used for querying historical data for the following:
 - Monitor runs matching the specified query parameters.
 - VMware reconciliation topology collected by VMware monitors currently running on SiteScope.
 - List of monitor types together with the metric names per monitor type for which user has view permissions.

The methods **getData**, **getDataWithTopology**, and **getMonitorTypesWithMetricNames** enable you to perform the above tasks.

- New **getSchedulePreferencesSnapshot** (REST and SOAP-based) method retrieves all schedule preferences that are available in SiteScope.
- New **updateTemplate** (REST and SOAP-based) method enables you to rename a template.
- The **search** (REST and SOAP-based) method is enhanced to include regular expressions in the search criteria. The method allows to search for monitors and groups based on their tag names and values.

See the SiteScope Public API Reference Guide for more information.

- General – Support for open SSH connection for Windows and Linux remote servers running on OpenSSH 7.1 P2.
- Integration with Operations Manager – A new field **Instruction text** is added to the General Settings panel at the monitor level, which enables users to include help or instructional text in SiteScope event messages that are sent to Operations Manager/OMi.

Business Process Insight (BPI) / TransactionVision (TV)

- BPI and TV are no longer available.
- RTSM topology still might exist – but data flow of integration itself will be disabled

Send Documentation Feedback

If you have comments about this document, you can [contact the documentation team](#) by email. If an email client is configured on this system, click the link above and an email window opens with the following information in the subject line:

Feedback on APM What's New (Application Performance Management 9.30)

Just add your feedback to the email and click send.

If no email client is available, copy the information above to a new message in a web mail client, and send your feedback to SW-Doc@hpe.com.

We appreciate your feedback!